

2016

## BECI Homepage

Buffett Early Childhood Institute

Follow this and additional works at: <http://digitalcommons.unomaha.edu/oiestudentlearning>

---

### Recommended Citation

Buffett Early Childhood Institute, "BECI Homepage" (2016). *Student Learning*. Paper 102.  
<http://digitalcommons.unomaha.edu/oiestudentlearning/102>

This Website is brought to you for free and open access by the Portfolio/  
Visit 2016-18 at DigitalCommons@UNO. It has been accepted for  
inclusion in Student Learning by an authorized administrator of  
DigitalCommons@UNO. For more information, please contact  
[unodigitalcommons@unomaha.edu](mailto:unodigitalcommons@unomaha.edu).



## ADDRESSING CRITICAL NEEDS

The Buffett Early Childhood Institute is partnering with Nebraska's universities and colleges to develop strategies to ensure a skilled, informed, and diverse workforce is available to all young children.

[MORE](#)



The mission of The Buffett Early Childhood Institute is to transform the lives of young children by improving their learning and development.



### WHO WE ARE

*We are an innovative research, practice, and policy institute of the University of Nebraska.*

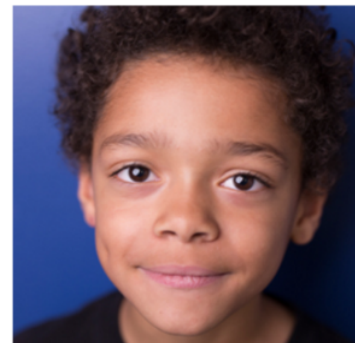
We harness the multidisciplinary resources of all four campuses of the university to promote the development and learning of children from birth through age 8. Our efforts are focused especially on children who are vulnerable because of poverty, abuse, or developmental delays. [MORE](#)



### WHAT WE DO

*We put knowledge that exists into action to improve children's learning and development.*

We transform early childhood development and education through applied research, professional preparation for early childhood educators and providers, public policy, and outreach. [MORE](#)



### WHY WE DO IT

*Research teaches us all that the most effective time to affect a child's future is from birth through age 8.*

We believe all children deserve the opportunity to develop, learn, and succeed in life. And we know that the earliest years are the best time to help children build a strong foundation for long-term success. [MORE](#)



## CURRENT INITIATIVES

### Superintendents' Early Childhood Plan

An innovative, comprehensive approach to reducing achievement and opportunity gaps for children, birth through Grade 3, in the 11 school districts of the Learning Community of Douglas and Sarpy Counties. [MORE](#)

### Transforming the Early Childhood Workforce in Nebraska

Statewide conversations among universities and colleges (2- and 4-year, public and private) to develop an action plan for tackling Nebraska's shortage of highly qualified early childhood professionals. [MORE](#)

### Nebraska Early Childhood Workforce Survey

A survey of teachers and early education professionals who work in licensed home-based and licensed center-based programs, and Kindergarten and elementary school classrooms is the first of its kind in Nebraska. [MORE](#)

## NEWS RELEASES

August 18, 2016

**New Report Urges Better System of Support for Parents**

August 15, 2016

**Buffett Institute Mourns Loss of Dick Holland**

## EVENTS

SEP  
16 -17

**UNK Early Childhood Conference**

*Kearney, Neb.*

July 11, 2016

**Buffett Institute Appoints Associate Director of Workforce Development**

[View All Releases](#)

NOV  
2-5

**2016 NAEYC Annual Conference**  
*Los Angeles, CA*

NOV  
9-11

**Buffett Institute Board of Advisors Meeting**  
*Omaha, Neb.*

[View All Events](#)

"For children at risk, early childhood programs are nothing less than a lifeline to success."

DR. SAMUEL J. MEISELS, FOUNDING EXECUTIVE DIRECTOR

### NEBRASKA'S CHILDREN IN NEED

The Buffett Early Childhood Institute's work begins in our home state, where the need for high-quality early childhood programs and services is urgent and growing.



**more than 42%**

More than **42 percent** of Nebraska's children from birth through age 5 are considered at risk for school failure.

**0 to 5**

**at least 50%**

In **36 counties** across Nebraska, at least **50 percent** of children birth through age 5 meet at-risk criteria.



**only 7-8%**

Only **7-8 percent** of Nebraska's vulnerable infants and toddlers participate in programs recognized as meeting quality standards.

Source: *First Five Nebraska*



[Home](#) | [Careers](#) | [Contact](#) | [News & Events](#)

[Sign Up for Our Newsletter](#)



UNIVERSITY OF  
**Nebraska**

University of Nebraska at Kearney  
University of Nebraska-Lincoln  
University of Nebraska Medical Center  
University of Nebraska Omaha  
[Give at NUfoundation.org](#)

© 2012-2016, Buffett Early Childhood Institute. All rights reserved.

*Buffett Early Childhood Institute is an equal opportunity employer. All qualified applicants will receive consideration for employment without regard to race, color, religion, sex, sexual orientation, gender identity, national origin, disability, or protected veteran status.*

