


Fall 1989

Fact Book 1989

UNO Office of Institutional Effectiveness
University of Nebraska at Omaha

Follow this and additional works at: <http://digitalcommons.unomaha.edu/oiefactbooks>

 Part of the [Educational Assessment, Evaluation, and Research Commons](#), and the [Higher Education Commons](#)

Recommended Citation

Office of Institutional Effectiveness, UNO, "Fact Book 1989" (1989). *Fact Books*. Paper 3.
<http://digitalcommons.unomaha.edu/oiefactbooks/3>

This Report is brought to you for free and open access by the Office of Institutional Effectiveness at DigitalCommons@UNO. It has been accepted for inclusion in Fact Books by an authorized administrator of DigitalCommons@UNO. For more information, please contact unodigitalcommons@unomaha.edu.



THE UNIVERSITY OF NEBRASKA AT OMAHA

Fact Book - 1989-90



**OFFICE OF INSTITUTIONAL RESEARCH
July, 1989**



Office of Institutional Research
Omaha, Nebraska 68182
(402) 554-2367

This eighth edition of the University of Nebraska at Omaha Fact Book has been designed to present a variety of information and data, about the University, in a concise, easily used format. I hope this provides a profile of UNO that will expand your understanding of our institution.

I wish to thank the many individuals and departments at the University for their contributions to the Fact Book. Sources for the data are listed at the bottom of each table and illustration, and the cooperation of these sources made the project possible.

Finally, again we solicit your comments and suggestions on the Fact Book so future issues will be more helpful to you.

James Maynard
Director of Institutional Research
July 1989

TABLE OF CONTENTS

GENERAL INFORMATION	1
The Board of Regents and the Administration	2
Academic Department Chairpersons	3
Goals and Objectives	4
General Description	4
History	4
Accreditations	5
Degrees and Programs Currently Offered	6
STUDENTS AND ALUMNI	9
Head Count Enrollment Summary; by College: Fall 1988	10
On-Campus Enrollment by Age Group and Sex: Fall 1988	14
On-Campus Enrollment by College, Sex, and Class: Fall 1988	16
Sex Distribution, Average Age, and Average Credit Hours Enrolled; Undergraduate and Graduate Students; Selected Fall Semesters 1973 through 1988	18
Student Credit Hours Enrolled; by College and Curriculum: Academic Years 1987-88 and 1988-89	21
Distribution of Freshmen Class by Locale of High School Graduated From: Fall 1988	25
Number of Degrees Conferred; by College of Major or Concentration and Level of Degree: 1983-84 through 1987-88	31
Tuition Rates and General Student Fees: 1977-78 through 1988-89	34
Student Financial Aid; Need and Ability Based: 1986-87, 1987-88, and 1988-89	35
Analysis of Scores on American College Testing (ACT) Examination by UNO First-Time Freshmen: 1988-89	36
Scores on American College Testing (ACT) Examination by UNO and National First-Time Freshmen: 1983-84 through 1988-89	37
Residence of Alumni: 1987	38

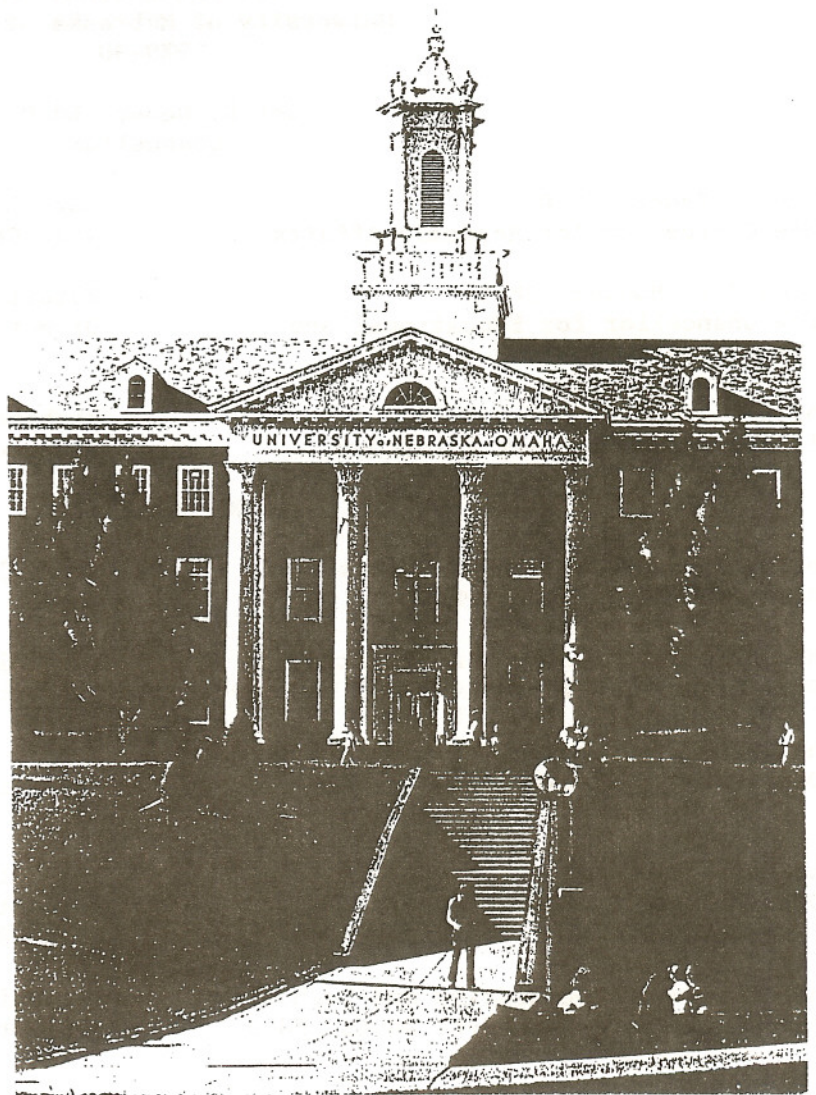
FACULTY	39
Average Age, Average Years in Rank, and Average Years at UNO of all Full-Time Faculty; by College and Rank: 1988-89	40
Full-Time Faculty Highest Earned Degree by College and Academic Rank: 1988-89	41
Distribution of Full-Time Faculty by College, Rank, and Tenure Status: 1988-89	42
Full-Time Graduate Faculty Status; by College and Academic Rank: 1988-89	45
Selected Demographic Measures of the Full-Time UNO Faculty: 1973-74, 1981-82, and 1988-89	46
PHYSICAL PLANT AND BUDGET	49
University Building Space Summary as of April 1989	50
Map of Campus of the University of Nebraska at Omaha	51
Current Revenues and Expenditures: 1980-81, 1986-87, and 1987-88	52
LIBRARY	57
University Library	58
RESEARCH	59
External Funding	60
NON-CREDIT PROGRAMS	61
Non-Credit Programs	62

LIST OF ILLUSTRATIONS

Administrative Site Headcount Enrollments; Fall Semesters: 1979 through 1988	11
Sources of Growth In Total 'On Campus' Enrollment: Fall 1987 to Fall 1988	12
Total "On-Campus" Headcount Enrollment Fall Semesters: 1969 through 1988	13
Age Distribution of Undergraduate and Graduate Students; By Sex: Fall 1988	15
"On-Campus" Undergraduate Students; By Class and Total Fall Semesters: 1979 through 1988	17
Percentage of Undergraduate Students; By Sex; Selected Fall Semesters: 1973 through 1988	19
Percentage of Graduate Students; By Sex; Selected Fall Semesters: 1973 through 1988	20
Ten Largest Curricula in Terms of Academic Year Student Credit Hours Enrolled: Average, 1987-88 and 1988-89	24
Distribution of Freshmen Class By Locale of High School Graduated From: Fall 1988	29
Ten Largest Sources of Freshmen; 20 & Younger: Fall 1988	30
Number of Degrees Conferred; Total UNO: 1974-75 through 1987-88	32
Number of Degrees Conferred; By College of Major or Concentration: 1983-84 through 1987-88	33
Rank Distribution of the Full-Time UNO Faculty: 1973-74, 1981-82 and 1988-89	43
Percentage of Full-Time Faculty Holding Tenure; By College and Total UNO: 1986-87 through 1988-89	44
Average Age, Average Years-In-Rank, and Average Years-At-UNO; Full-Time Faculty: 1973-74, 1981-82, and 1988-89	47
Distribution of Current Revenues for the Year Ended June 30, 1988	53
Distribution of Current Expenditures for the Year Ended June 30, 1988	54
Percentage Growth; Educational & General Expenditures & Revenues: 1980-81 to 1987-88	55

THE UNIVERSITY OF NEBRASKA AT OMAHA

General Information



UNIVERSITY OF NEBRASKA AT OMAHA

THE BOARD OF REGENTS
University of Nebraska
1989

Robert Allen, Hastings
 Don S. Blank, D.D.S., McCook
 Donald C. Fricke, D.D.S., Lincoln
 Kermit R. Hansen, Elkhorn
 Nancy Hoch, Nebraska City
 John W. Payne, Kearney
 Margaret Robinson, Norfolk
 Rosemary Skrupa, Omaha
 William F. Swanson, Corporation Secretary
 Martin A. Massengale, Ph.D., Interim President

Jim Anderson - UNMC Student Regent
 Paula Effle - UNO Student Regent
 Bryan Hill - UNL Student Regent

THE ADMINISTRATION
University of Nebraska at Omaha
1989-90

Del D. Weber, Ed.D.,
 Chancellor

Otto F. Bauer, Ph.D.
 Vice Chancellor for Academic Affairs

Gary L. Carrico, M.B.A.
 Vice Chancellor for Business & Finance

Richard E. Hoover, Ph.D.
 Vice Chancellor for Educational and
 Student Services

Robert F. Gibson, Ed.D.
 Director of Intercollegiate Athletics

Louis F. Cartier, Jr., M.A.
 Director of University Relations

Richard M. Snowden, M.P.A.
 Director of Campus Computing

THE COLLEGES

The College of Arts and Sciences
 Dean, John M. Newton, Ph.D.

The College of Fine Arts
 Dean, David L. Shrader, D.M.A.

The College of Business Administration
 Dean, Larry R. Trussell, Ph.D.

The College of Graduate Studies and
 Research
 Dean, Margaret P. Gessaman, Ph.D.

The College of Continuing Studies
 Dean, Alan S. Hackel, Ph.D.

The College of Home Economics
 Dean, Karen E. Craig, Ph.D.

The College of Education
 Dean Richard B. Flynn, Ed.D.

The College of Public Affairs and
 Community Service
 Dean David W. Hinton, Ph.D.

The College of Engineering and Technology
 Associate Dean, Harold L. Davis, Ed.D.

The University Library
 Director, Robert S. Runyon, M.L.S.

UNIVERSITY OF NEBRASKA AT OMAHA

3

ACADEMIC DEPARTMENT CHAIRPERSONS
1988-1989

COLLEGE/DEPARTMENT

CHAIRPERSON/DIRECTOR

ARTS & SCIENCES

Biology
Black Studies
Chemistry
Communication
English
Foreign Languages
Geography-Geology
History
Mathematics & Computer Science
Philosophy & Religion
Physics
Political Science
Psychology
Sociology

Robert Egan
George Garrison
Roger Hoburg
Hugh Cowdin
David Raabe
Elvira Garcia
John Shroder
Bruce Garver
Scott Downing
Ronald Burke
Raymond Guenther
Orville Menard
Kenneth Deffenbacher
Boyd Littrell

BUSINESS ADMINISTRATION

Accounting
Economics
Finance, Banking & Insurance
Decision Sciences
Laws & Society
Management
Marketing

Michael Barrett
Kim Sosin
Fuad Abdullah
Vaughn Johnson
Frank Forbes
Thomas Martin
David Ambrose

EDUCATION

Counseling
Educational Administration & Supervision
Health, Physical Education & Recreation
Special Education & Communication Disorders
Teacher Education

Richard Blake
TO BE ANNOUNCED
Michael Stewart
John Christensen
Harrison Means

FINE ARTS

Art
Dramatic Arts
Music
Writer's Workshop

Tom Majeski
Douglas Paterson
TO BE ANNOUNCED
Arthur Homer

PUBLIC AFFAIRS AND COMMUNITY SERVICE

Criminal Justice
Gerontology
Goodrich Program
Public Administration
Social Work

Vincent Webb
James A. Thorson
Donald Dendinger
B. J. Reed
Sunny Andrews

UNIVERSITY LIBRARY

Circulation Services
Collection Development
Reference
Technical Services

Gregory Robinson
John Reidelbach
Laura Dickson
Ella Jane Bailey

UNIVERSITY OF NEBRASKA AT OMAHA

GOALS AND OBJECTIVES

The primary purposes of the University of Nebraska at Omaha are, first, to maintain a faculty of dynamic teacher-scholars of high character and competence who will inspire able and willing students to achieve to the maximum of their abilities and, second, to provide classroom, laboratory, and library facilities adequately equipped to produce an environment conducive to learning of the highest order.

GENERAL DESCRIPTION

With a student body of approximately 16,000, the University of Nebraska at Omaha strives to treat each student as an individual, giving attention to the student's background, problems, and aspirations. Ample opportunity is provided for specialized study in terms of interest, talent, and ultimate vocational objective. Thus, the University is concerned that its graduates be good citizens who earn a better living and live a richer, fuller life.

A university may well be judged by the success of its graduates. In the half century since its founding, the University has furnished Omaha, the state of Nebraska, and the nation with graduates of sound intellectual training and strong character.

The University of Nebraska at Omaha is the administrative home of six colleges: Arts and Sciences, Business Administration, Continuing Studies, Education, Fine Arts, and Public Affairs and Community Service. In addition, two colleges administered by the University of Nebraska-Lincoln, (Engineering and Technology and Home Economics) have a substantial in-residence program on the campus. Finally, at UNO there is a full range of graduate programs under the administrative aegis of the University-wide Graduate College.

The University, in addition to offering courses for college credit, designs training courses for thousands of business and industrial employees; provides in-service training for elementary and secondary school teachers; conducts television classes for college credit on both commercial television and its own educational channel (KYNE-TV); and sponsors a wide variety of conferences, workshops, lectures, and fine art events to enrich the college credit offerings.

The University of Nebraska at Omaha is a commuter campus, and has no on-campus housing for students.

HISTORY

What is now the University of Nebraska at Omaha was founded in 1908 as the University of Omaha, a private non-sectarian college, with a campus at 24th and Pratt Streets in northeast Omaha. The first term of the co-educational college began in 1909, under the leadership of Dr. Daniel E. Jenkins, with twenty students.

The movement to make the University a municipal institution began in 1929, and in May, 1930 the citizens of Omaha voted to establish the Municipal University of Omaha. In the summer of 1930, the Omaha Board of Education selected the first University Board of Regents who were inducted into office on July 1, 1930. In January, 1931 the new Board of Regents took over the University of Omaha and its properties.

The expansion of the Municipal University of Omaha in the early 1930's led to a decision to move the campus to a 52-acre site southwest of Dodge and 60th Streets. In November 1936, the University secured a grant from the Works Progress Administration which, together with some accrued building funds, financed the construction of a Georgian-style building. This building, now called Arts and Sciences Hall, was finished in 1938 and served as the sole campus building until the 1950's.

In July 1968, the citizens of Omaha voted to transfer all University property to the University of Nebraska, and the former Municipal University of Omaha became the University of Nebraska at Omaha.

The University began rapid growth when it became a part of the University of Nebraska System. Enrollment was 8,730 in Fall, 1967 which was the last year as the Municipal University of Omaha. Three years later, enrollment was 13,185, a growth of 51 percent in the first three years as the University of Nebraska at Omaha. By Fall, 1982, enrollment had reached 15,565.

The Dodge Street campus has grown from its original 52 acres to its present 88.5 acres. Recent major new buildings on the Dodge Street campus have been the Performing Arts Center; College of Business Administration Building; University Library; Health, Physical Education, and Recreation Building; and the Durham Science Center. The Peter Kiewit Conference Center was recently opened in downtown Omaha.

ACCREDITATIONS

The University of Nebraska at Omaha is accredited by the North Central Association of Colleges and Secondary Schools, and has programs which are accredited or approved by the National Council for Accreditation of Teacher Education, the National Council on Social Work Education, the Engineers Council for Professional Development, the American Home Economics Association (for undergraduate programs), the American Dietetic Association, the American Assembly of Collegiate Schools of Business, the National Association of Schools of Public Affairs and Administration, the American Chemical Society, and the National Association of Schools of Music, and the National Recreation and Park Association/American Association for Leisure and Recreation. Its courses are accepted for purposes of teacher certification by the Nebraska State Department of Education.

Course credits from the University of Nebraska at Omaha are accepted by other colleges and universities which are members of the North Central Association and by other regional accrediting agencies.

UNIVERSITY OF NEBRASKA AT OMAHA

DEGREES AND PROGRAMS CURRENTLY OFFERED

COLLEGE OF ARTS AND SCIENCES:

Bachelor of Arts degree programs in:

Biology, Black Studies, Chemistry, Journalism, Broadcasting, Speech Communication, Economics, English, French, German, Spanish, General Science, Geography, Geology, History, Interdisciplinary Studies, International Studies, Liberal Studies, Computer Science, Mathematics, Philosophy, Religion, Physics, Political Science, Psychology, Sociology, Dramatic Arts, and Art History.

Bachelor of Science degree programs in:

Biology, Chemistry, Journalism, Broadcasting, Economics, Geography, Geology, History, Interdisciplinary Studies, Computer Science, Physics, Political Science, Psychology, Applied Sociology, Speech Communication, Mathematics, and Engineering Physics.

Master of Arts degree programs in:

Biology, Communication, English, Geography, History, Mathematics, Political Science, Psychology, and Sociology.

Master of Science degree programs in:

Biology, Mathematics, Political Science, Educational Psychology, Applied Sociology, and Industrial/Organizational Psychology.

Master of Arts for Teachers of Mathematics

Cooperative Doctor of Philosophy (with the University of Nebraska-Lincoln) degree programs in:

Industrial Psychology, Developmental Psychobiology, and Child Psychology.

In addition, the College of Arts and Sciences also offers the following pre-professional programs:

Agriculture, Architecture, Dentistry, Dental Hygiene, Law, Medicine, Medical Technology, Nuclear Medicine Technology, Nursing, Optometry, Pharmacy, Physical Therapy, Physician's Assistant, Radiologic Technology, and Veterinarian Medicine.

COLLEGE OF BUSINESS ADMINISTRATION:

Bachelor of Science in Business Administration degree programs in:

Professional Accounting, Banking, Business Finance, Law & Administration, Business Economics, Decision Sciences, Economics, Individually Designed, Insurance, Management, Management Information Systems, Marketing Management, Retail Management, Advertising Management, Production/Operations Management, Sales & Sales Management, Industrial Marketing, Marketing Research, Fashion Merchandising, and Real Estate & Land Use Economics.

Master of Business Administration

Master of Arts degree program in Economics

Master of Science degree program in Economics

Master of Professional Accounting

COLLEGE OF EDUCATION:

Bachelor of Science in Education degree programs in:

Community Health Education, Elementary & Early Childhood Education, Exercise Science, Library Science, Recreation/Leisure Studies, Secondary Education, Speech Pathology and Secretarial Science.

Master of Arts degree programs in:

Educational Administration, Elementary Education, Mental Retardation, Health/Physical Education and Recreation, Secondary Education, Speech Pathology, Gerontology, Elementary Counseling, Secondary Counseling, Agency Counseling and College Student Personnel Services.

Master of Science degree programs in:

Educational Administration, Elementary Education, Health/Physical Education and Recreation, Reading, Learning Disabilities, Secondary Education, Speech Pathology, Teaching Emotionally Disturbed, Teaching Hearing Impaired, Teaching Mentally Retarded; Urban Education, Gerontology, Elementary Administration, Secondary Administration, Elementary Counseling, Secondary Counseling, Agency Counseling and College Student Personnel Services.

Specialist in Education in Educational Administration and School Psychologist

Certificate in School Psychology

COLLEGE OF ENGINEERING AND TECHNOLOGY:

Associate of Science in Engineering Technology degree programs in:

Construction Engineering Technology, Drafting Design Engineering Technology, Electronics Engineering Technology, and Manufacturing Engineering Technology.

Associate of Science in Technology in Fire Protection Technology

Bachelor of Science in Civil Engineering

Bachelor of Science in Engineering Technology degree programs in:

Construction Engineering Technology, Drafting Design Engineering Technology, Electronics Engineering Technology, and Manufacturing Engineering Technology.

Bachelor of Science in Industrial Technology

Master of Science in Civil Engineering

COLLEGE OF FINE ARTS:

Bachelor of Arts in Dramatic Arts

Bachelor of Arts in Art History

Bachelor of Fine Arts degree programs in:

Studio Art and Creative Writing.

Bachelor of Arts in Studio Art

COLLEGE OF FINE ARTS, CONTINUED

Bachelor of Music degree programs in:

Music Education, Music Performance, and Music Theory-Composition.

Bachelor of Science in Music Merchandising

Master of Arts in Dramatic Arts

Master of Music in Music

COLLEGE OF HOME ECONOMICS:

Bachelor of Science degree programs in:

Community Service, Family and Individual in Later Years, Home Economics/Communication, Restaurant and Institution Management. Degree Programs to be completed in Lincoln: Consumer Affairs, Home Economics and Advertising, Home Economics and News-Editorial, Home Economics and Broadcasting, Vocational Education, Consumer and Homemaking Education, Human Development and Elementary Education, Early Childhood Education, Family Rehabilitation, Human Development and Special Education, Dietetics, Clinical Research, Nutrition, Fashion Design, Fashion Merchandising, Interior Design, and Consumer Textiles.

COLLEGE OF PUBLIC AFFAIRS AND COMMUNITY SERVICE:

Bachelor of Science in Public Administration

Bachelor of Science in Urban Studies

Bachelor of Science in Social Work

Bachelor of Science in Criminal Justice

Certificate programs (undergraduate and graduate) in Gerontology

Master of Arts degree programs in:

Criminal Justice and Social Gerontology

Master of Science degree programs in:

Criminal Justice and Urban Studies

Master of Social Work

Master of Public Administration

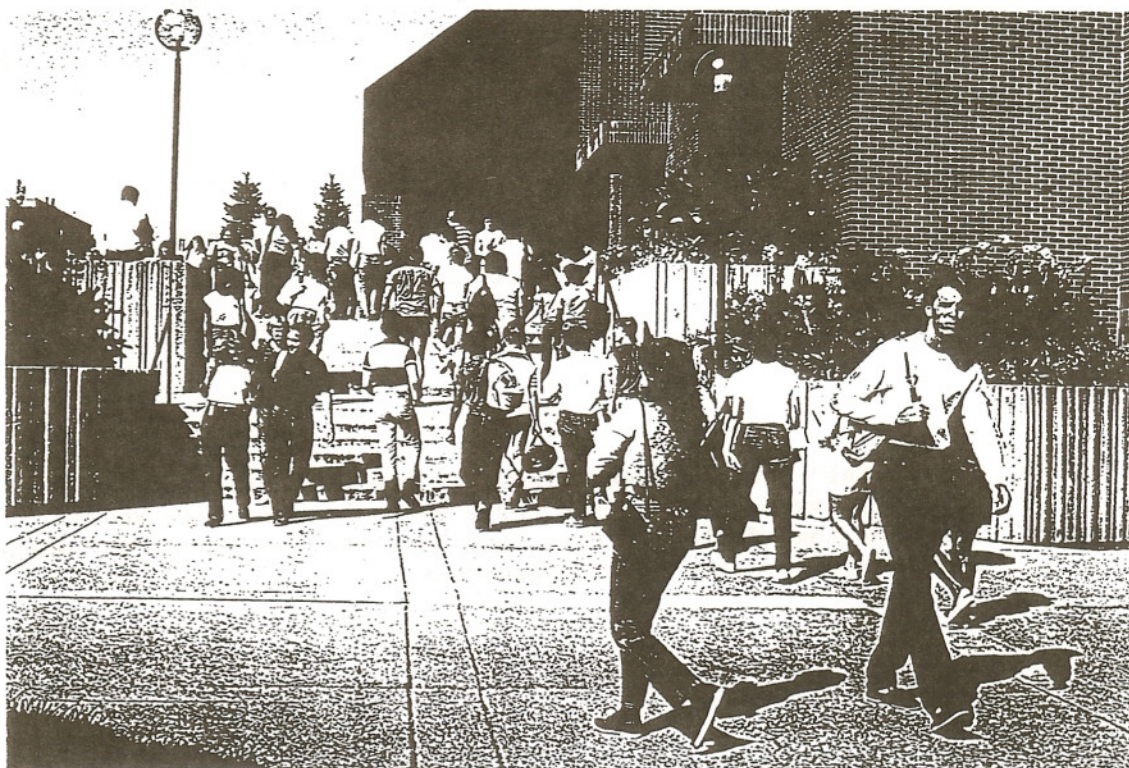
COLLEGE OF CONTINUING STUDIES:

Bachelor of General Studies degree programs in:

Black Studies, Communication, Journalism, Broadcasting, Computer Science, Library Science, Health Education, Physical Education, Recreation/Leisure Studies, German, French, Spanish, English, Speech, General Studies, Biology, Mathematics, General Science, General Administration, Philosophy, Religion, Chemistry, Geology, Physics, Psychology, Criminal Justice, Human Services Delivery, Gerontology, Economics, Geography, History, International Studies, Political Science, Sociology, Dramatic Arts, Art, and Music.

THE UNIVERSITY OF NEBRASKA AT OMAHA

Students and Alumni

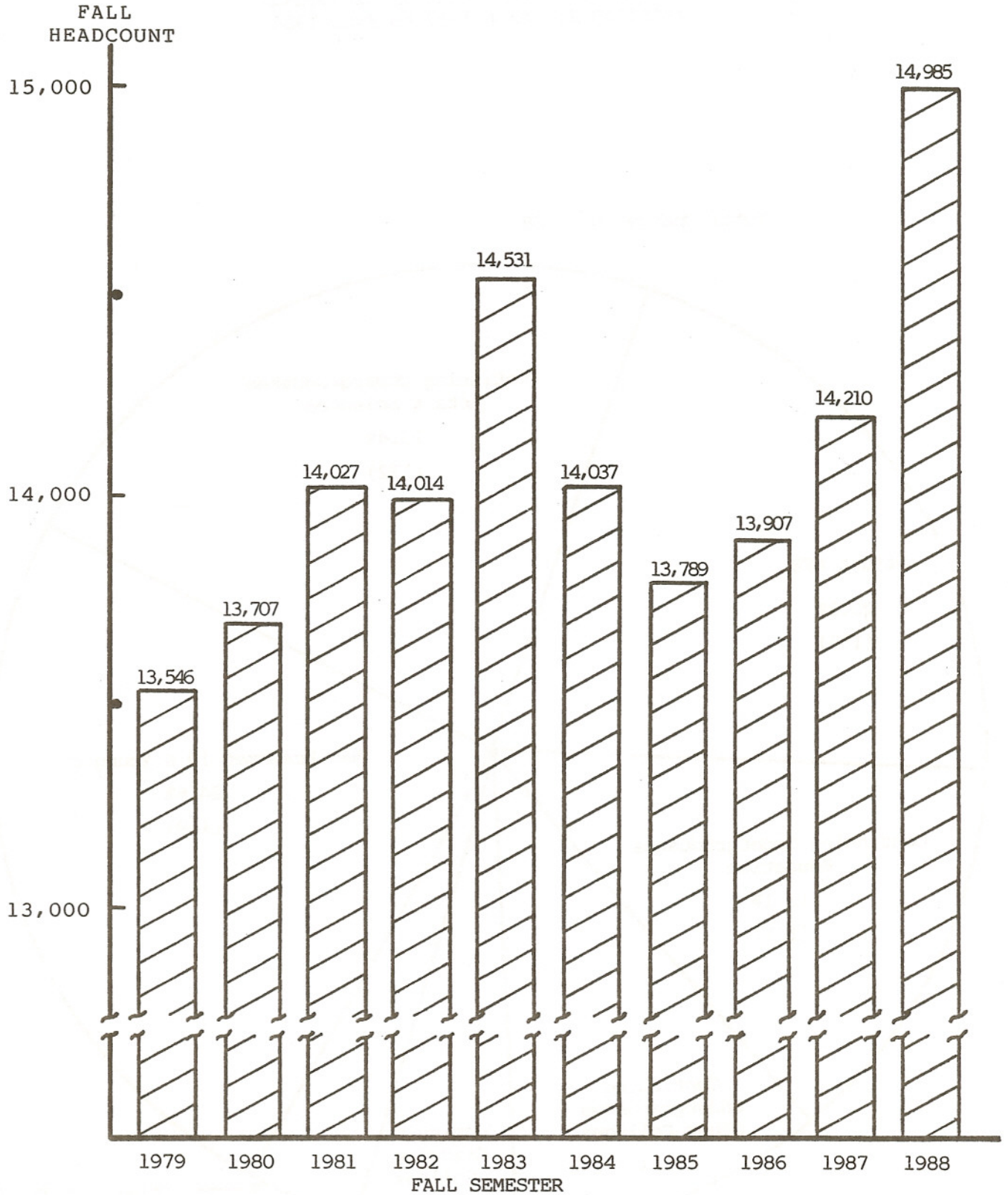


UNIVERSITY OF NEBRASKA AT OMAHA
 HEADCOUNT ENROLLMENT SUMMARY; BY COLLEGE:
 FALL 1988

<u>College (or equivalent) of Student</u>	<u>Total "On-Campus"</u>	<u>Administrative Site</u>	<u>Delivery Site</u>
Arts and Sciences	3,448	3,431	3,431
Business Administration	3,775	3,775	3,775
Education	1,346	1,346	1,346
Fine Arts	311	311	311
Public Affairs & Community Service	545	545	545
Continuing Studies	1,483	1,483	1,483
Non-Degree/Intercampus	1,013	847	847
University Division	594	594	594
Graduate	2,314	2,313	2,313
Engineering-Technology	836	--	836
Home Economics	267	--	267
Criminal Justice-UNL	--	340	--
	<hr/>	<hr/>	<hr/>
	15,932	14,985	15,748

NOTE: The "total" headcount enrollment at the University of Nebraska is reported, variously, by the three methods summarized above. The analyses that follow in this Fact Book use the "Total On-Campus" and "Administrative Site" approaches.

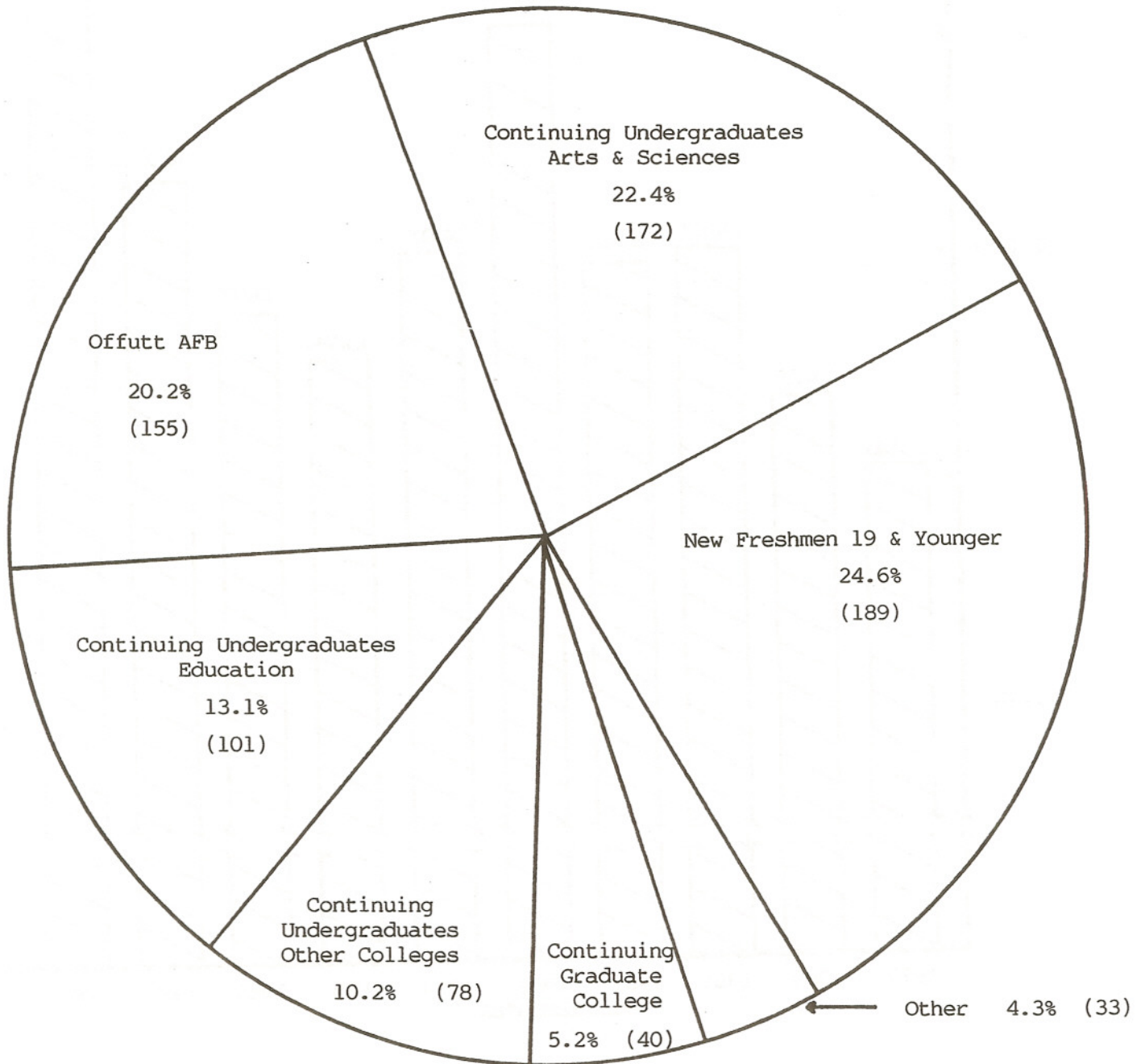
UNIVERSITY OF NEBRASKA AT OMAHA
ADMINISTRATIVE SITE HEADCOUNT ENROLLMENTS
FALL SEMESTERS: 1979 through 1988



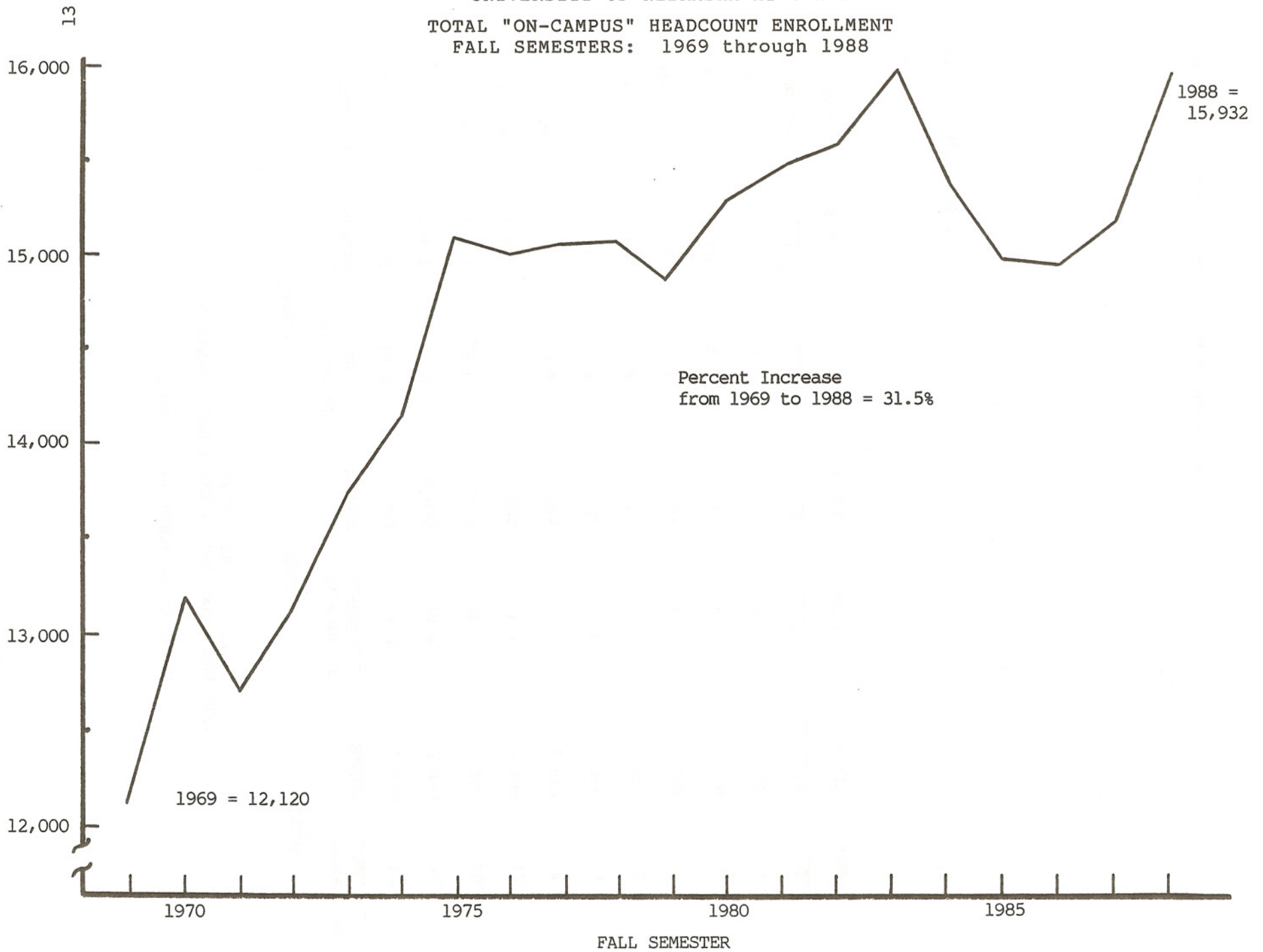
UNIVERSITY OF NEBRASKA AT OMAHA

SOURCES OF GROWTH IN TOTAL 'ON CAMPUS'
ENROLLMENT: FALL 1987 to FALL 1988

Total Change = 768



UNIVERSITY OF NEBRASKA AT OMAHA
TOTAL "ON-CAMPUS" HEADCOUNT ENROLLMENT
FALL SEMESTERS: 1969 through 1988



Source: Office of Institutional Research

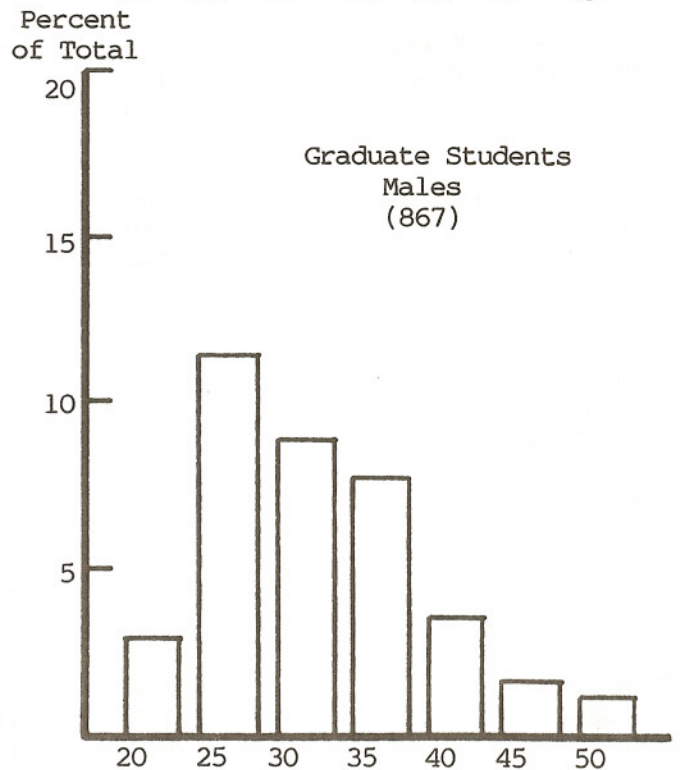
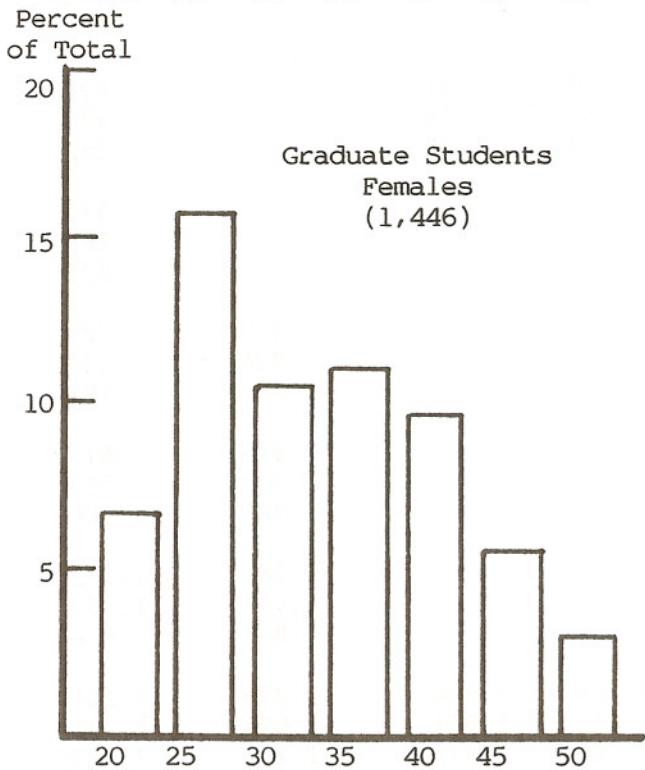
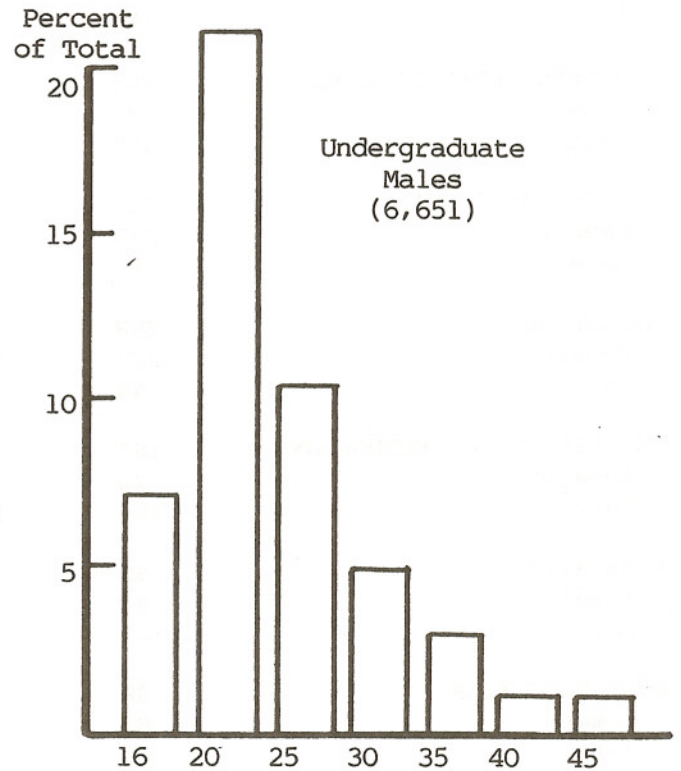
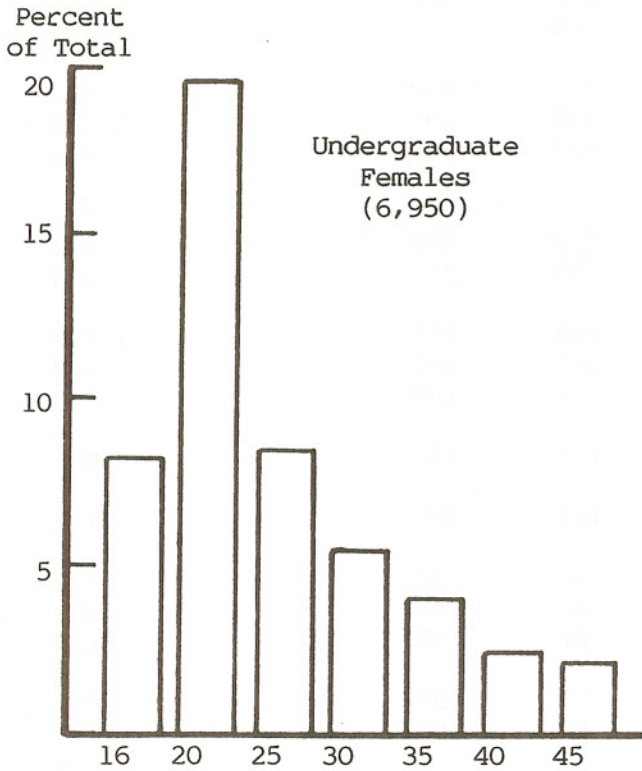
UNIVERSITY OF NEBRASKA AT OMAHA
ON-CAMPUS ENROLLMENT BY AGE GROUP AND SEX:
FALL 1988

<u>Age Group</u>	<u>Female</u>		<u>Male</u>		<u>Total</u>	
	<u>Number</u>	<u>Percent of Whole</u>	<u>Number</u>	<u>Percent of Whole</u>	<u>Number</u>	<u>Percent of Whole</u>
16 - 19	1,132	13.5	998	13.3	2,130	13.4
20 - 24	2,833	33.7	2,922	38.8	5,755	36.1
25 - 29	1,517	18.0	1,687	22.4	3,204	20.1
30 - 34	1,022	12.1	884	11.7	1,906	12.0
35 - 39	832	9.9	585	7.8	1,417	8.9
40 - 44	560	6.7	234	3.1	794	5.0
45 - 49	319	3.8	124	1.7	443	2.8
50 - 54	99	1.2	53	0.7	152	0.9
55 - 59	56	0.7	18	0.2	74	0.5
60 & Over	26	0.3	13	0.2	39	0.2
Unknown	<u>10</u>	<u>0.1</u>	<u>8</u>	<u>0.1</u>	<u>18</u>	<u>0.1</u>
TOTAL	8,406	100.0	7,526	100.0	15,932	100.0

AVERAGE AGE: 27.1

Source: Office of Institutional Research

AGE DISTRIBUTION OF UNDERGRADUATE AND GRADUATE STUDENTS; BY SEX: FALL 1988

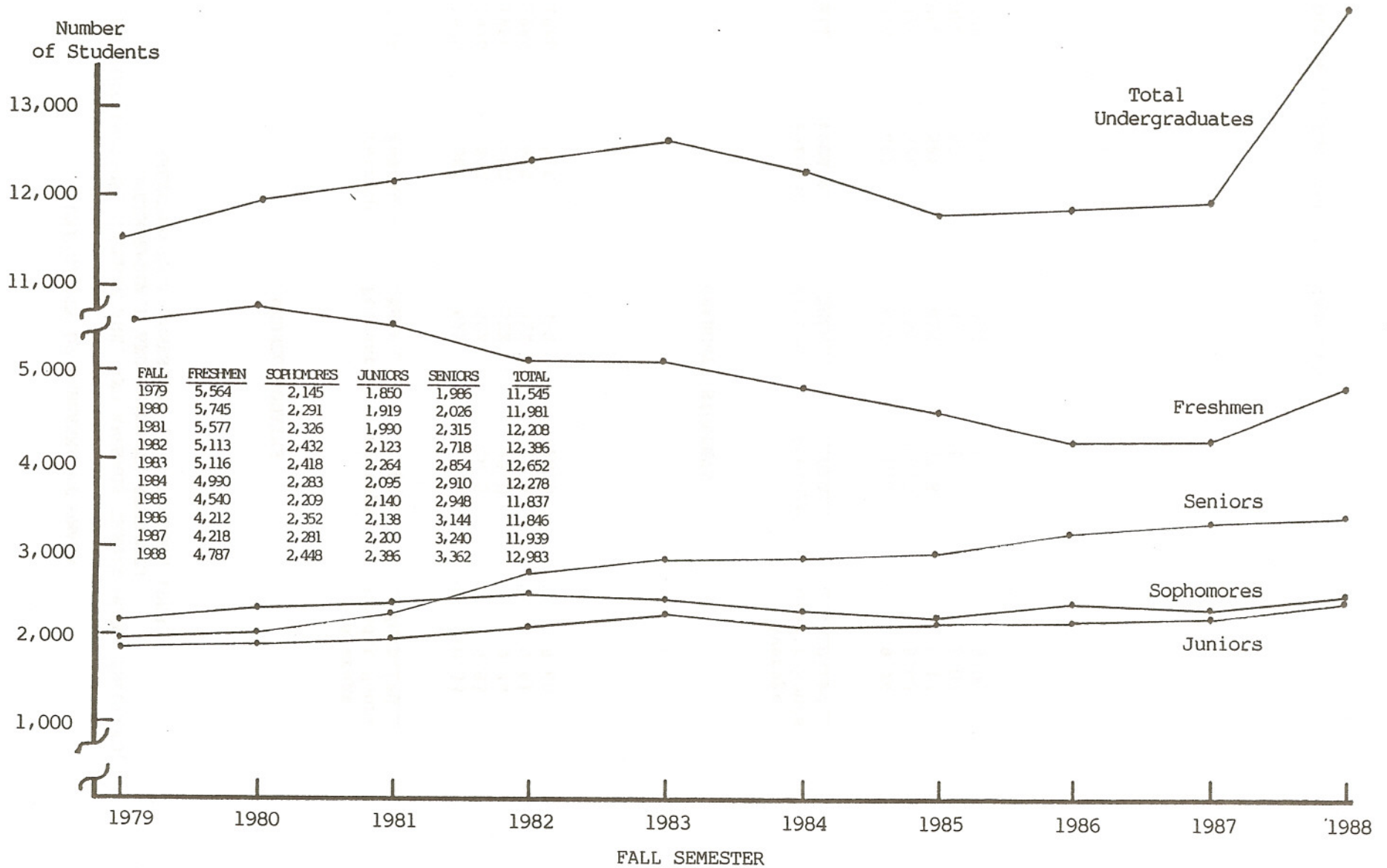


UNIVERSITY OF NEBRASKA AT OMAHA
ON-CAMPUS ENROLLMENT BY COLLEGE, SEX,
AND CLASS: FALL 1987

<u>College, Sex</u>	<u>Freshmen</u>	<u>Sophomores</u>	<u>Juniors</u>	<u>Seniors and Special</u>	<u>Graduate or Unclassified</u>	<u>Total</u>
ARTS & SCIENCES	1,237	668	534	699		3,138
Female	685	364	270	326		1,645
Male	552	304	264	373		1,493
BUSINESS ADMINISTRATION	1,243	748	761	1,032		3,784
Female	628	361	358	491		1,838
Male	615	387	403	541		1,946
CONTINUING STUDIES	445	181	248	451		1,325
Female	235	87	113	200		635
Male	210	94	135	251		690
EDUCATION	268	209	248	485		1,210
Female	222	171	201	376		970
Male	46	38	47	109		240
ENGINEERING & TECHNOLOGY	183	165	176	330		854
Female	23	12	15	25		75
Male	160	153	161	305		779
FINE ARTS	96	72	49	73		290
Female	55	41	28	41		165
Male	41	31	21	32		125
HOME ECONOMICS	88	63	65	59		275
Female	82	55	60	53		250
Male	6	8	5	6		25
PUBLIC AFFAIRS AND COMMUNITY SERVICE	154	108	119	111		492
Female	71	41	66	52		230
Male	83	67	53	59		262
UNIVERSITY DIVISION	504	67				571
Female	260	29				289
Male	244	38				282
INTER-CAMPUS					329	329
Female					224	224
Male					105	105
NON-DEGREE					613	613
Female					333	333
Male					280	280
GRADUATE					2,283	2,283
Female					1,467	1,467
Male					816	816
TOTAL UNO	4,218	2,281	2,200	3,240	3,225	15,164
Female	2,261	1,161	1,111	1,564	2,024	8,121
Male	1,957	1,120	1,089	1,676	1,201	7,043

Source: Office of Institutional Research

UNIVERSITY OF NEBRASKA AT OMAHA
 "ON-CAMPUS" UNDERGRADUATE STUDENTS; BY CLASS AND TOTAL
 FALL SEMESTERS: 1979 through 1988



UNIVERSITY OF NEBRASKA AT OMAHA

SEX DISTRIBUTION, AVERAGE AGE, AND AVERAGE CREDIT HOURS ENROLLED;
UNDERGRADUATE AND GRADUATE STUDENTS:
SELECTED FALL SEMESTERS 1973 THROUGH 1988

UNDERGRADUATES

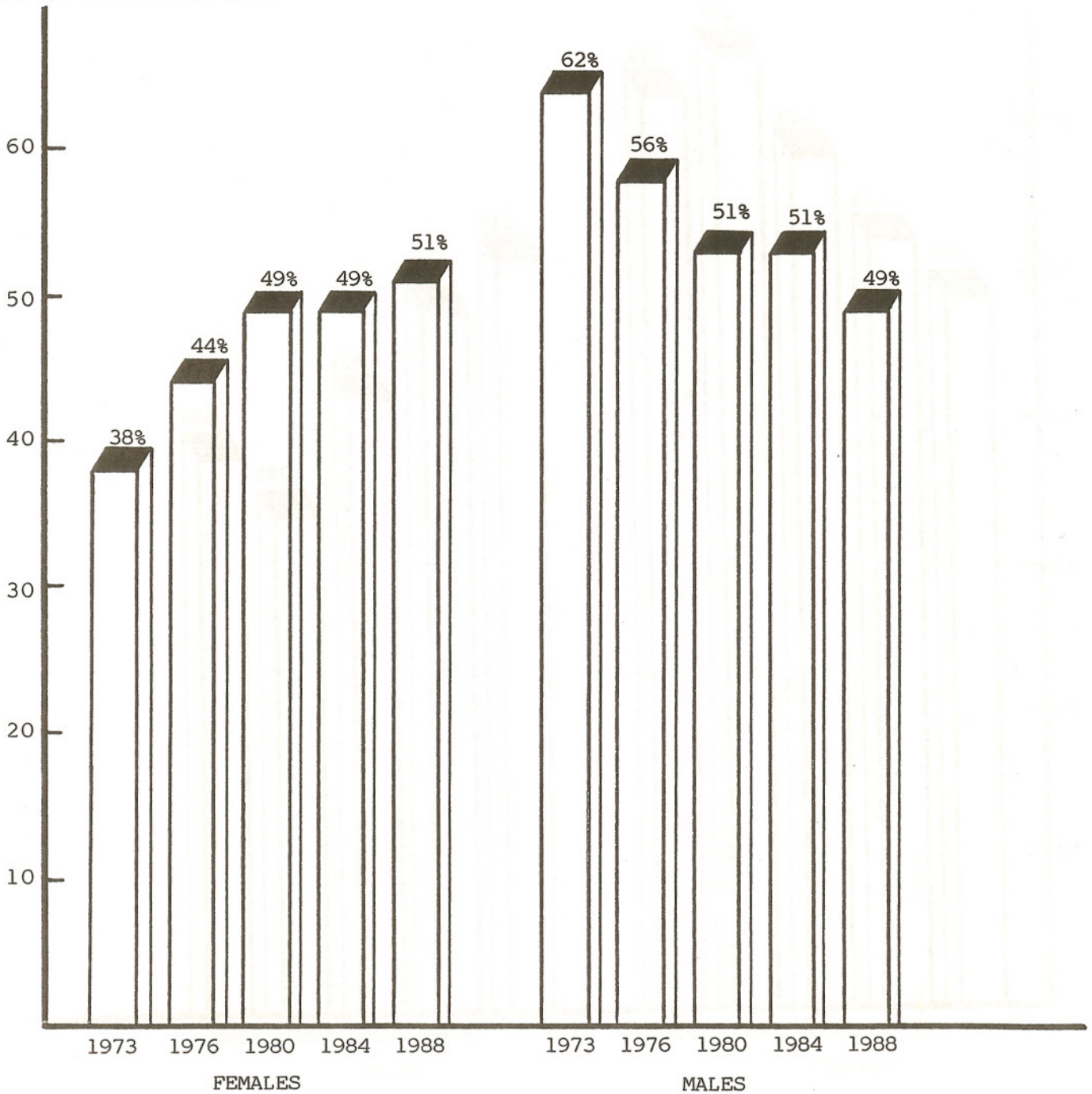
<u>Fall</u>	<u>Percent Female</u>	<u>Percent Male</u>	<u>Average Age</u>	<u>Average Credit Hours Enrolled</u>
1973	38%	62%	n.a.	10.33
1976	44%	56%	24.5	9.93
1980	49%	51%	25.0	9.74
1984	49%	51%	25.5	9.61
1988	51%	49%	26.0	9.60

GRADUATE STUDENTS

<u>Fall</u>	<u>Percent Female</u>	<u>Percent Male</u>	<u>Average Age</u>	<u>Average Credit Hours Enrolled</u>
1973	49%	51%	n.a.	9.24
1976	52%	48%	30.3	5.42
1980	58%	42%	31.8	5.17
1984	65%	35%	33.1	5.02
1988	62%	38%	33.8	5.00

PERCENTAGE OF UNDERGRADUATE STUDENTS;
BY SEX; SELECTED FALL SEMESTERS: 1973 through 1988

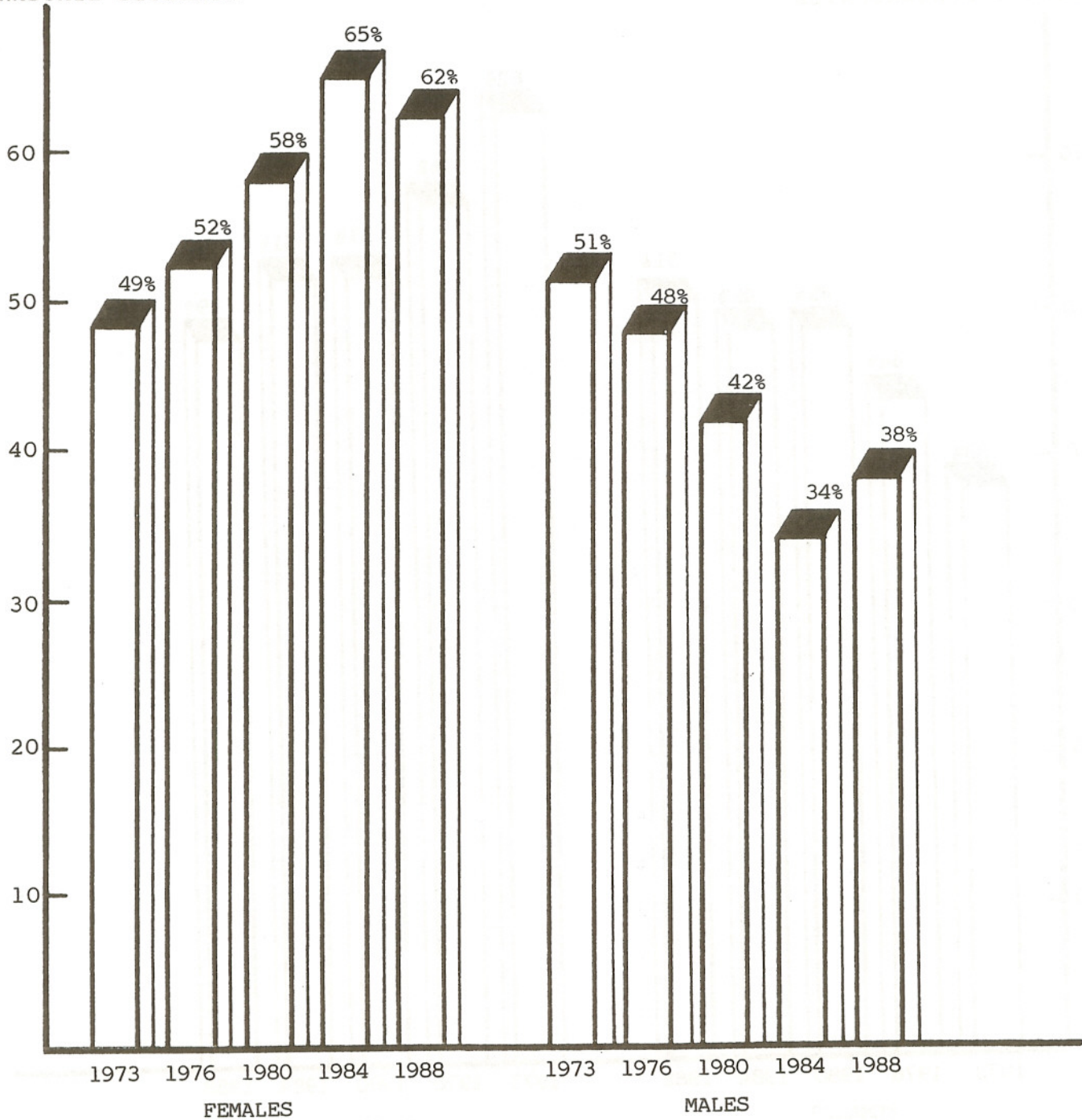
PERCENTAGE OF
TOTAL UNDERGRADUATES



UNIVERSITY OF NEBRASKA AT OMAHA

PERCENTAGE OF GRADUATE STUDENTS; BY SEX;
SELECTED FALL SEMESTERS: 1973 THROUGH 1988

PERCENTAGE OF TOTAL
GRADUATE STUDENTS



Source: Office of Institutional Research

UNIVERSITY OF NEBRASKA AT OMAHA

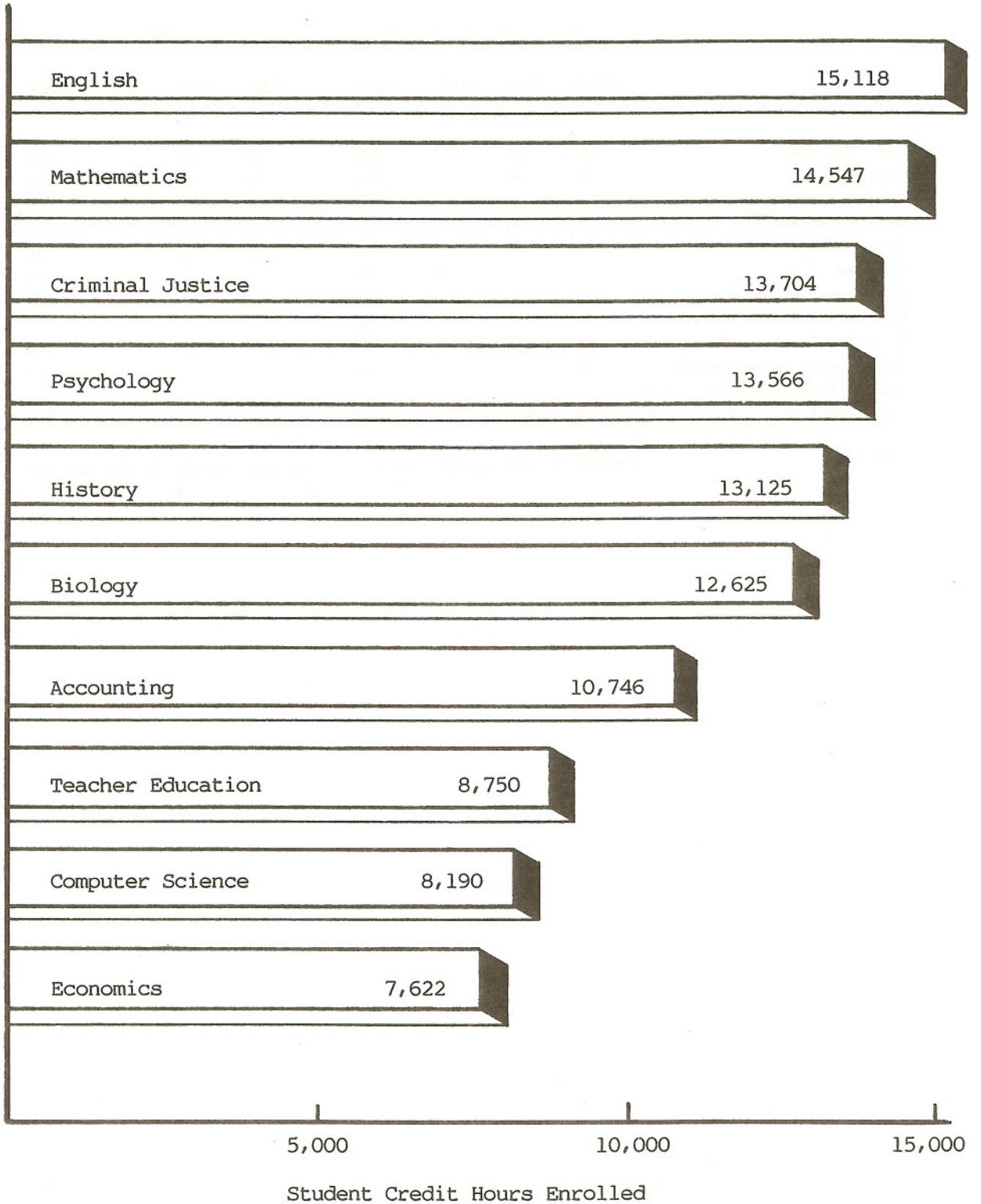
STUDENT CREDIT HOURS ENROLLED; BY COLLEGE AND CURRICULUM:
ACADEMIC YEARS 1987-88 AND 1988-89

	* * * 1987-88 * * *				* * * 1988-89 * * *				87-88 to 88-89
	<u>Lower</u>	<u>Upper</u>	<u>Grad</u>	<u>Total</u>	<u>Lower</u>	<u>Upper</u>	<u>Grad</u>	<u>Total</u>	<u>Total Pct Change</u>
ARTS & SCIENCES:									
Anthropology	1,521	142	3	1,666	1,701	72		1,773	6.42
Biology	10,217	1,311	426	11,954	11,488	1,345	463	13,296	11.23
Black Studies	1,092	264		1,356	1,404	327		1,731	27.65
Broadcasting	591	650	12	1,253	615	532	21	1,168	(6.78)
Chemistry	4,189	500	18	4,707	4,782	527	28	5,337	13.38
Chinese	36			36	54			54	50.00
Communication			332	332			295	295	(11.14)
Computer Science	6,621	1,307	94	8,022	6,734	1,138	486	8,358	4.19
Czechoslovakian	71			71	73			73	2.82
English	13,013	1,050	450	14,513	14,152	1,128	442	15,722	8.33
Foreign Language	49	21		70	57			57	(18.57)
French	1,779	317	13	2,109	1,936	409	9	2,354	11.62
General Program	214			214					-
Geography	5,347	1,134	265	6,746	5,881	1,054	281	7,216	6.97
Geology	2,447	176		2,623	3,174	97		3,271	24.70
German	953	209	1	1,163	1,028	174	9	1,211	4.13
Hebrew	45			45	40			40	(11.11)
History	10,698	1,396	261	12,355	11,912	1,761	223	13,896	12.47
Humanities	2,282			2,282	2,282			2,282	0.00
Italian	223			223	208			208	(6.73)
Japanese	99			99	111			111	12.12
Journalism	1,470	2,090	75	3,635	1,386	1,990	87	3,463	(4.73)
Latin	74			74	50			50	(32.43)
Mathematics	12,923	780	315	14,018	13,943	789	344	15,076	7.55
New Start					175			175	-
Philosophy	2,457	483	6	2,946	2,166	723	3	2,892	(1.83)
Physics	6,278	270	9	6,557	6,209	284	9	6,502	(0.84)
Political Science	4,653	1,358	209	6,220	4,845	1,353	130	6,328	1.74
Psychology	7,688	4,562	1,249	13,499	7,479	4,791	1,364	13,634	1.00
Religion	2,187	411		2,598	2,115	515		2,630	1.23
Russian					158			158	-
Sociology	6,138	1,298	213	7,649	6,171	1,248	168	7,587	(0.81)
Spanish	2,364	368	9	2,741	2,408	267	6	2,681	(2.19)
Speech	5,686	1,422	105	7,213	6,020	1,524	144	7,688	6.59
Statistics		309	141	450		270	162	432	(4.00)
College Total	113,405	21,828	4,206	139,439	120,757	22,318	4,674	147,749	5.96

	* * * 1987-88 * * *				* * * 1988-89 * * *				87-88 to 88-89
	<u>Lower</u>	<u>Upper</u>	<u>Grad</u>	<u>Total</u>	<u>Lower</u>	<u>Upper</u>	<u>Grad</u>	<u>Total</u>	<u>Total Pct Change</u>
BUSINESS ADMINISTRATION									
Accounting	7,194	3,401	162	10,757	6,747	3,831	156	10,734	(0.21)
Decision Science	285	4,491		4,776	4,764	3,144		7,908	65.58
Economics	5,172	3,090		8,262	5,871	857	255	6,983	(15.48)
Finance, Banking & Insurance	6,261	906	195	7,362	216	4,626		4,842	(34.23)
Law & Society		2,966		2,966		3,117		3,117	5.09
Management	2,649	4,224		6,873	2,745	4,776		7,521	9.43
Marketing	375	3,100		3,475	537	3,552		4,089	17.67
MBA			2,591	2,591			3,327	3,327	28.41
Real Estate-Land Use Economics	642	735		1,377	591	576		1,167	(15.25)
College Total	22,578	22,913	2,948	48,439	21,471	24,479	3,738	49,688	2.58
EDUCATION									
Counseling & Guidance		129	2,009	2,138		99	1,844	1,943	(9.12)
Education Core Program	3,368	987		4,355	3,318	705		4,023	(7.62)
Educational Administration			1,628	1,628			1,503	1,503	(7.68)
Health Education	1,236	1,567	405	3,208	1,302	1,876	413	3,591	11.94
HPER	162		219	381	309		167	476	24.93
Physical Education Activities	2,200			2,200	2,170			2,170	(1.36)
Physical Education	1,723	1,485	390	3,598	1,743	1,518	438	3,699	2.81
Recreation-Leisure Study	264	261	42	567	135	329	69	533	(6.00)
Special Education	138	1,140	1,458	2,736	192	1,519	1,283	2,994	9.43
Teacher Education	435	5,680	2,266	8,381	516	6,318	2,285	9,119	8.81
College Total	9,526	11,249	8,417	29,192	9,685	12,364	8,002	30,051	2.94
FINE ARTS									
Art	3,429	888	9	4,326	3,381	1,345	36	4,762	10.08
Dramatic Arts	1,874	153	113	2,140	2,063	259	88	2,410	12.62
Fine Arts			18	18			15	15	-
Fine Arts Press		117		117		54		54	(53.85)
Music	2,952	446	265	3,663	2,991	530	147	3,668	0.14
Writer's Workshop	490	113		603	574	139		713	18.24
College Total	8,745	1,717	405	10,867	9,009	2,327	286	11,622	6.95
PUBLIC AFFAIRS & COMMUNITY SERVICE									
Criminal Justice	6,978	6,318	194	13,490	7,278	6,281	359	13,918	3.17
Gerontology	756	741	426	1,923	648	1,113	567	2,328	21.06
Goodrich	1,332			1,332	1,419			1,419	6.53
Public Administration	369	186	1,380	1,935	270	282	1,350	1,902	(1.71)
Social Work	1,440	1,495	2,745	5,680	1,683	1,495	2,897	6,075	6.95
Urban Studies	231	37	82	350	231	80	137	448	28.00
College Total	11,106	8,777	4,827	24,710	11,529	9,251	5,310	26,090	5.58

	* * * 1987-88 * * *				* * * 1988-89 * * *				87-88 to 88-89
	<u>Lower</u>	<u>Upper</u>	<u>Grad</u>	<u>Total</u>	<u>Lower</u>	<u>Upper</u>	<u>Grad</u>	<u>Total</u>	<u>Total</u> <u>Pct Change</u>
OTHER									
Air Force ROTC	127	153		280	86	150		236	(15.71)
Army ROTC	91	98		189	73	132		205	8.47
Cooperative Education					3			3	-
Honors Program		81		81	6	177		183	125.93
International Studies	345	86		431	459	53		512	18.79
Planning		24	51	75		19	21	40	(46.67)
University Division	485			485	488			488	0.62
Consumer Science & Education	69			69	-			-	-
Human Development & Family	69	108		177	177	312		489	176.27
Fire Prevention Technology	54			54	-			-	-
General Engineering Technology					222			222	-
College Total	1,240	550	51	1,841	1,514	843	21	2,378	29.17
UNO Total	166,600	67,034	20,854	254,488	173,965	71,582	22,031	267,578	5.14

UNIVERSITY OF NEBRASKA AT OMAHA
 TEN LARGEST CURRICULA IN TERMS OF
 ACADEMIC YEAR STUDENT CREDIT HOURS ENROLLED:
 AVERAGE, 1987-88 and 1988-89



Source: Office of Institutional Research

UNIVERSITY OF NEBRASKA AT OMAHA

DISTRIBUTION OF FRESHMAN CLASS BY LOCALE
OF HIGH SCHOOL GRADUATED FROM: FALL 1988

	All <u>Ages</u>	20 & <u>Younger</u>	21 & <u>Older</u>	Unknown <u>Age</u>
Omaha School District:				
Benson	123	60	61	2
Bryan	86	56	30	-
Burke	221	150	71	-
Central	298	188	110	-
North	91	41	50	-
Northwest	178	120	58	-
South	162	85	77	-
Tech	29	-	29	-
Individual Study Center	2	1	1	-
TOTAL, Omaha School District	1,190	701	487	2
Other Douglas County Public:				
Bennington	16	10	6	-
Elkhorn	67	55	12	-
Millard North	187	150	37	-
Millard South	251	190	61	-
Ralston	138	99	39	-
Valley	7	2	5	-
Waterloo	3	2	1	-
Westside	254	158	96	-
TOTAL, Other Douglas County Public	923	666	257	-
Sarpy County Public:				
Bellevue East	92	63	29	-
Bellevue West	95	71	24	-
Gretna	19	10	9	-
Papillion/La Vista	178	129	49	-
Platteview/Springfield	29	21	8	-
TOTAL, Sarpy County Public	413	294	119	-
Pottawattamie County Public:				
Abraham Lincoln	35	14	21	-
Lewis Central	24	14	10	-
Thomas Jefferson	36	16	20	-
TOTAL, Pottawattamie County Public	95	44	51	-
Omaha-Council Bluffs Private:				
Bellevue Christian	12	11	1	-
Boy's Town	8	4	4	-
Brownell-Talbot	7	3	4	-
Creighton Prep	90	60	30	-
Duchesne	13	7	6	-
Flanagan	11	3	8	-

	<u>All Ages</u>	<u>20 & Younger</u>	<u>21 & Older</u>	<u>Unknown Age</u>
Gross	187	130	57	-
Holy Name	11	7	4	-
Marian	70	48	22	-
Mercy	41	28	13	-
Mt. Michael	7	3	4	-
Roncalli	91	68	23	-
St. Albert's	10	5	5	-
St. Cecelia-Cathedral	42	25	17	-
St. Joseph's	45	19	26	-
TOTAL, Omaha-Council Bluffs Private	645	421	224	-
ADDENDA: TOTAL METRO AREA	3,266	2,126	1,138	2

Nebraska Counties other than
Douglas and Sarpy:

Adams	5	1	4	-
Antelope	4	3	1	-
Blair	1	-	1	-
Boone	3	1	2	-
Box Butte	4	2	2	-
Boyd	1	-	1	-
Brown	2	2	-	-
Buffalo	11	2	9	-
Burt	8	1	7	-
Butler	4	1	3	-
Cass	41	19	21	1
Cedar	8	4	4	-
Chase	2	-	2	-
Cherry	2	1	1	-
Cheyenne	2	1	1	-
Clay	2	2	-	-
Colfax	6	3	3	-
Cuming	12	4	8	-
Custer	5	1	4	-
Dakota	3	-	3	-
Dawes	2	-	2	-
Dawson	3	1	2	-
Dixon	3	1	2	-
Dodge	42	20	22	-
Fillmore	2	1	1	-
Gage	3	1	2	-
Garfield	1	-	1	-
Greeley	2	1	1	-
Hall	10	3	7	-
Hamilton	5	3	2	-
Hayes	1	-	1	-
Holt	7	4	3	-
Howard	1	-	1	-
Jefferson	4	1	3	-

	<u>All Ages</u>	<u>20 & Younger</u>	<u>21 & Older</u>	<u>Unknown Age</u>
Kearney	2	1	1	-
Keith	4	1	3	-
Knox	5	2	3	-
Lancaster	29	11	18	-
Lincoln	14	2	12	-
Madison	18	12	6	-
Merrick	2	-	2	-
Morrill	2	2	-	-
Nemaha	8	2	6	-
Nuckolls	3	1	2	-
Otoe	9	5	4	-
Phelps	2	1	1	-
Pierce	5	4	1	-
Platte	19	8	11	-
Polk	2	1	1	-
Red Willow	1	1	-	-
Richardson	4	2	2	-
Rock	2	1	1	-
Saline	1	-	1	-
Saunders	16	11	5	-
Scotts Bluff	9	1	8	-
Seward	1	-	1	-
Sherman	4	-	4	-
Sioux	1	-	1	-
Stanton	2	1	1	-
Thayer	4	2	2	-
Thurston	5	-	5	-
Valley	3	2	1	-
Washington	58	36	22	-
Wayne	1	-	1	-
Webster	1	-	1	-
York	4	3	1	-
Other	26	2	24	-
TOTAL, Nebraska Counties except Metro	479	199	279	1

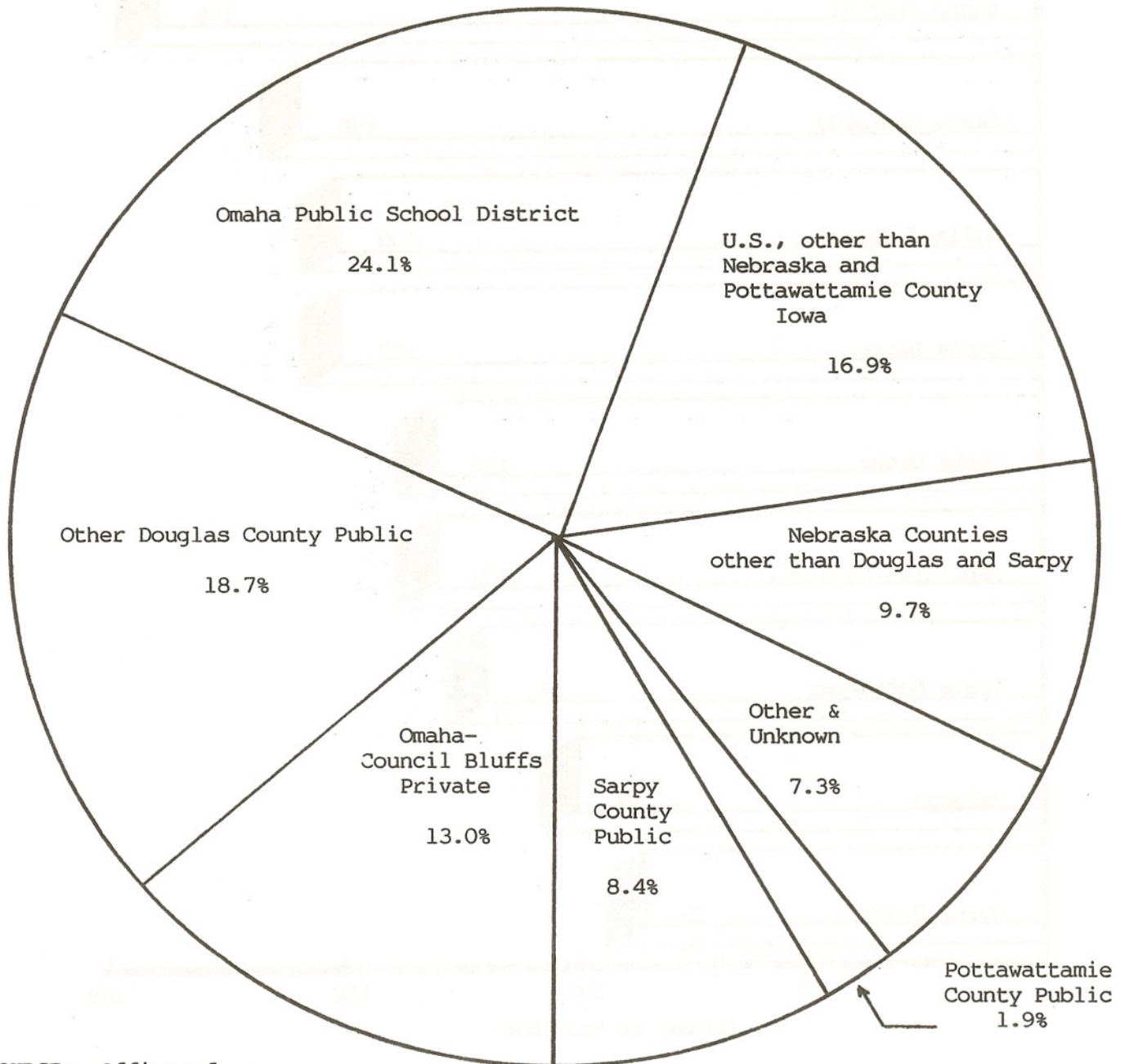
U.S., other than Nebraska and

Pottawattamie County, Iowa:

Colorado	25	4	21	-
Iowa	222	59	162	1
Kansas	33	5	28	-
Missouri	33	10	23	-
South Dakota	29	4	25	-
Wyoming	6	2	4	-
New England	23	3	20	-
Mid-Atlantic	79	16	63	-
Mid-West	157	43	114	-
Southeastern	90	14	76	-
Southwest	49	11	38	-

	<u>All Ages</u>	<u>20 & Younger</u>	<u>21 & Older</u>	<u>Unknown Age</u>
Mountain	28	4	22	-
Far West	64	15	49	-
TOTAL, U.S. other than Nebraska and Pottawattamie County, Iowa	837	190	645	2
GED Completion	126	14	111	1
Foreign Countries	78	23	54	1
Unknown	160	13	146	1
TOTAL UNO	4,946	2,565	2,373	8

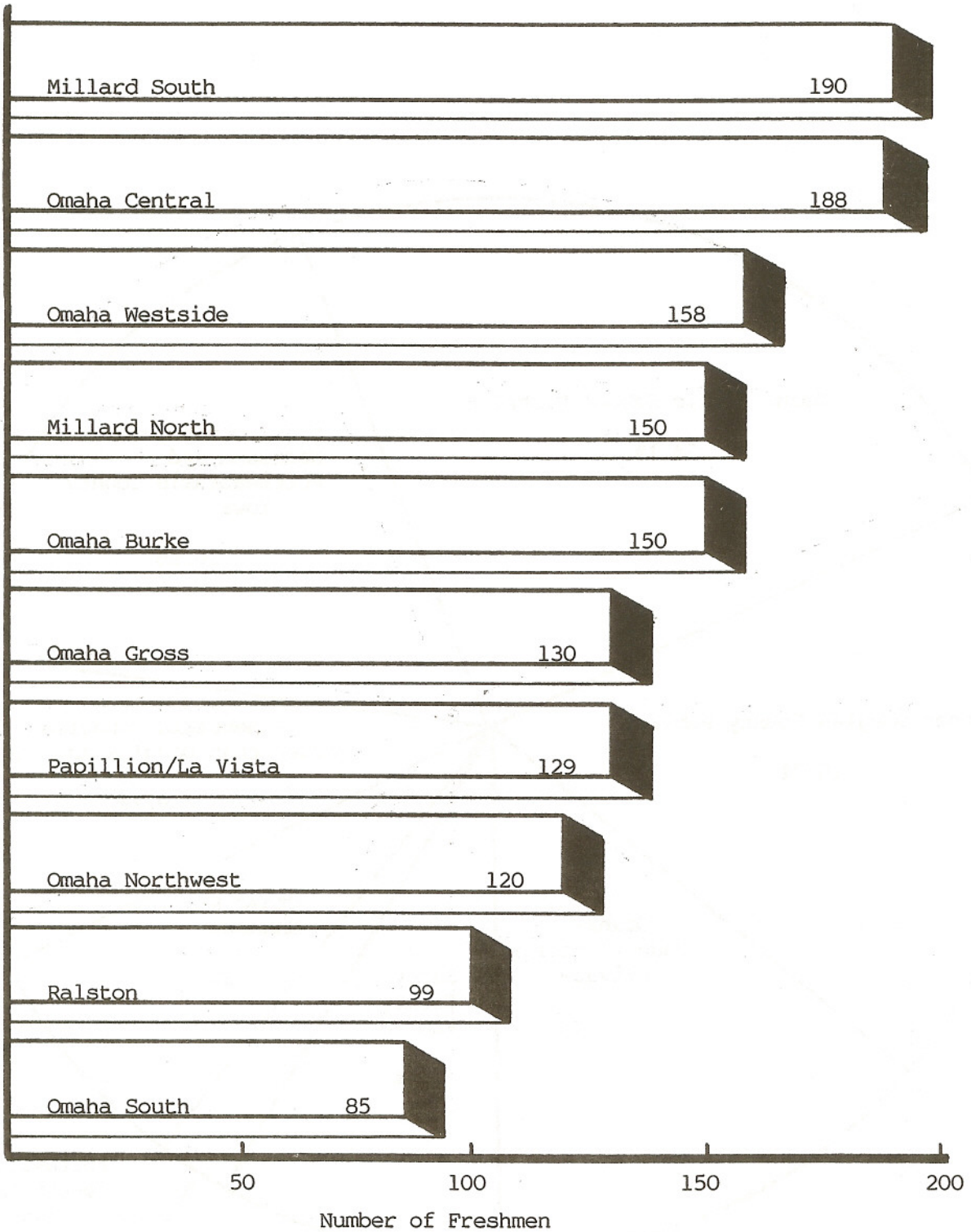
DISTRIBUTION OF FRESHMEN CLASS BY LOCALE
OF HIGH SCHOOL GRADUATED FROM: FALL 1988



SOURCE: Office of Institutional Research

UNIVERSITY OF NEBRASKA AT OMAHA

TEN LARGEST SOURCES OF FRESHMEN;
20 & YOUNGER: FALL 1988



Source: Office of Institutional Research

UNIVERSITY OF NEBRASKA AT OMAHA

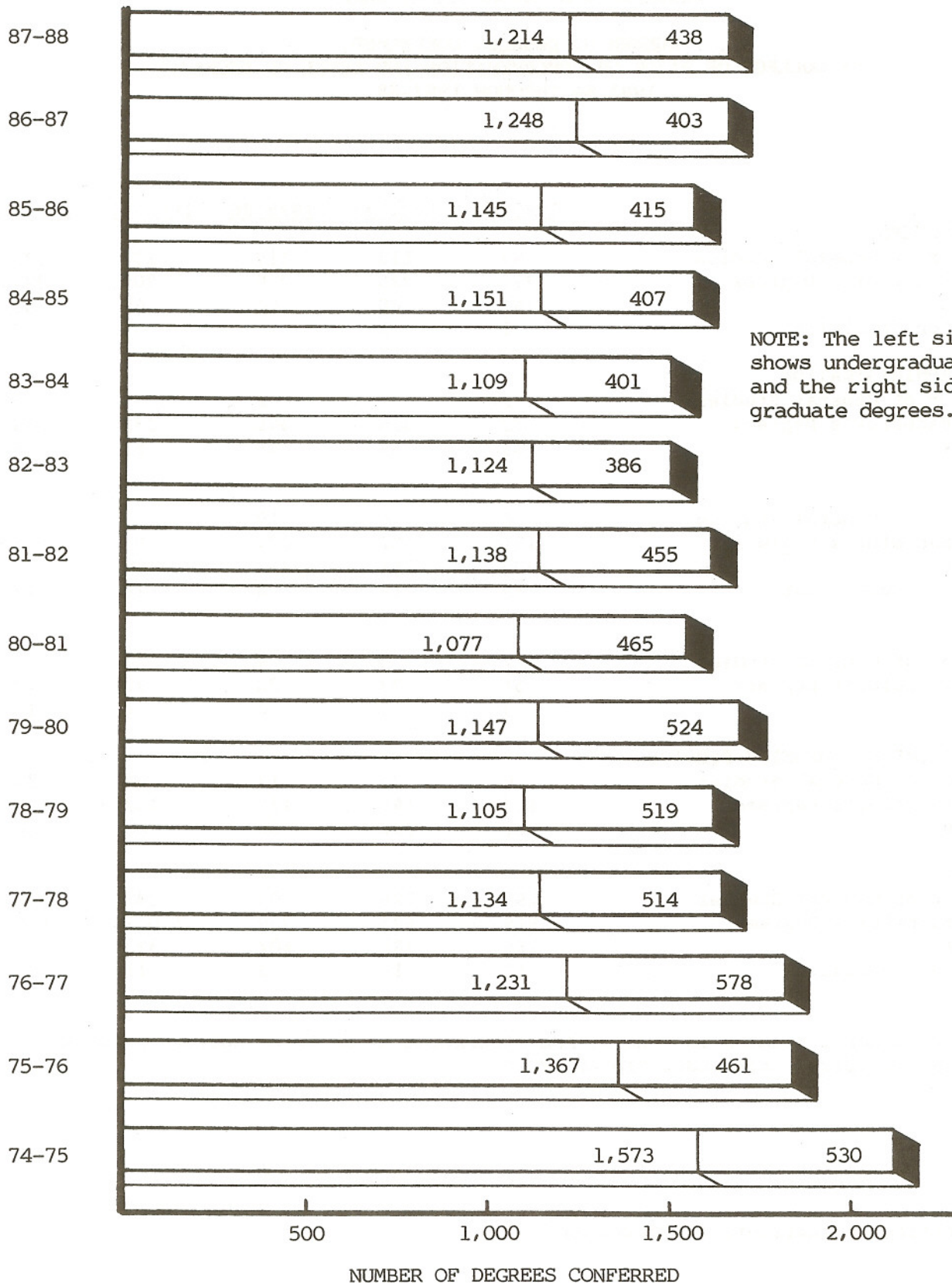
NUMBER OF DEGREES CONFERRED;
 BY COLLEGE OF MAJOR OR CONCENTRATION AND LEVEL OF DEGREE:
 1983-84 THROUGH 1987-88

	<u>1983-84</u>	<u>1984-85</u>	<u>1985-86</u>	<u>1986-87</u>	<u>1987-88</u>
ARTS & SCIENCES					
*Bachelor of General Studies	99	118	119	138	125
Other Bachelor's Degrees	277	285	250	309	293
Masters	47	60	54	49	60
Education Specialist	1	1	-	1	2
BUSINESS ADMINISTRATION					
*Bachelor of General Studies	2	-	2	1	3
Other Bachelor's Degrees	333	326	348	332	350
Masters	48	59	49	61	46
EDUCATION					
*Bachelor of General Studies	6	4	10	7	11
Other Bachelor's Degrees	131	132	174	199	167
Masters	209	164	212	176	199
Education Specialist	12	18	8	10	12
FINE ARTS					
*Bachelor of General Studies	2	3	4	7	3
Other Bachelor's Degrees	51	37	28	30	22
Masters	3	3	6	6	13
PUBLIC AFFAIRS & COMMUNITY SERVICE					
*Bachelor of General Studies	16	25	17	24	34
Other Bachelor's Degrees	127	145	139	147	154
Masters	81	102	86	100	106
TOTAL UNO					
*Bachelor of General Studies	190	226	206	231	228
Other Bachelor's Degrees	919	925	939	1,017	986
Masters	388	388	407	392	424
Education Specialist	13	19	8	11	14

*Bachelor of General Studies in General Administration is an inter-college program; thus these are listed only under "TOTAL UNO."

UNIVERSITY OF NEBRASKA AT OMAHA

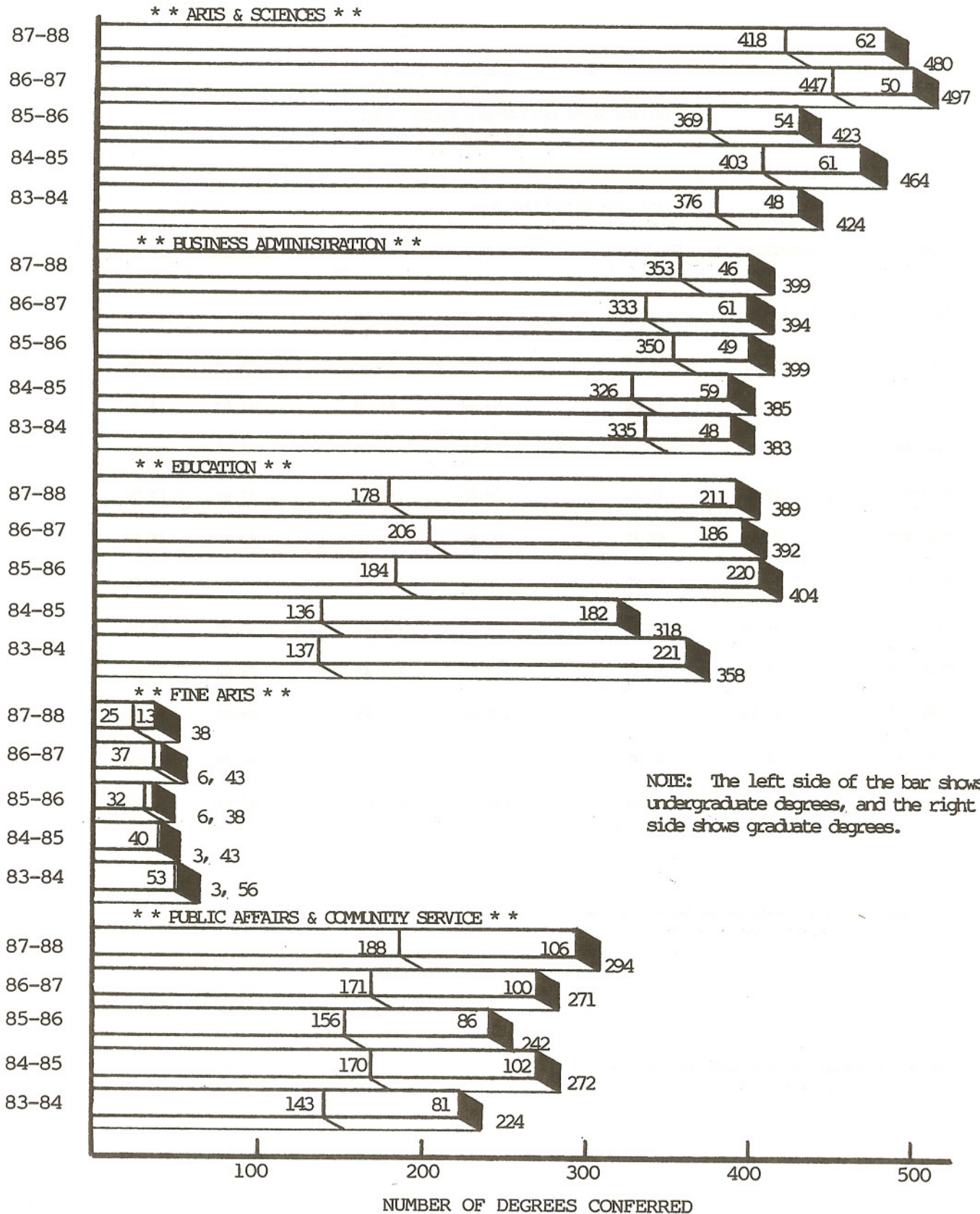
NUMBER OF DEGREES CONFERRED; TOTAL UNO:
1974-75 through 1987-88



Source: Office of Institutional Research

UNIVERSITY OF NEBRASKA AT OMAHA

NUMBER OF DEGREES CONFERRED; BY COLLEGE OF MAJOR OR CONCENTRATION: 1983-84 through 1987-88



Source: Office of Institutional Research

UNIVERSITY OF NEBRASKA AT OMAHA

TUITION RATES AND GENERAL STUDENT FEES
1977-78 THROUGH 1988-89

<u>Year</u>	<u>Tuition Rate per Credit Hour</u>				<u>General</u>	
	<u>** Resident **</u>		<u>** Non-Resident **</u>		<u>** Student Fees **</u>	
	<u>Undergraduate</u>	<u>Graduate</u>	<u>Undergraduate</u>	<u>Graduate</u>	<u>Full-Time</u>	<u>Part-Time</u>
1977-78	\$21.00	\$21.00	\$57.00	\$57.00	\$36.00	\$18.00
1978-79	22.50	22.50	61.00	61.00	36.00	18.00
1979-80	24.00	24.00	65.00	65.00	43.00	25.00
1980-81	26.50	26.50	72.00	72.00	43.00	25.00
1981-82	29.25	31.25	79.25	81.25	43.00	25.00
1982-83*	35.48	40.15	95.97	100.65	43.00	25.00
1983-84	34.50	41.00	93.50	100.00	44.50	26.50
1984-85	38.00	47.00	103.00	112.00	46.50	28.00
1985-86*	43.75	54.25	119.00	129.25	54.25	33.00
1986-87	41.75	51.75	113.25	123.25	59.25	36.00
1987-88	42.75	53.00	115.50	125.75	50.00	50.00
1988-89	45.25	56.50	122.25	134.00	52.00	52.00

*Includes one-time surcharge on tuition rates.

Source: Assistant Vice Chancellor for Finance

UNIVERSITY OF NEBRASKA AT OMAHA

STUDENT FINANCIAL AID; NEED AND ABILITY BASED:
1986-87, 1987-88, and 1988-89

	Number of Recipients			Dollar Value		
	<u>1986-87</u>	<u>1987-88</u>	<u>1988-89</u>	<u>1986-87</u>	<u>1987-88</u>	<u>1988-89</u>
NEED BASED						
Tuition Remission	714	602	590	\$ 375,232	\$ 572,077	\$ 562,711
Regents' Special Aid	192	246	210	262,199	147,953	124,426
Other Programs	731	686	895	583,143	1,132,004	1,678,500
Pell Grants	2,100	2,202	2,300	2,458,532	2,683,584	2,990,000
SSIG	119	106	220	56,908	53,911	111,775
SEOG	286	286	350	160,428	163,851	209,760
Fed Insured Loans	2,116	1,435	1,450	4,293,031	2,644,028	2,682,500
Nat'l Direct Loans	733	613	660	671,827	604,175	650,000
TOTAL NEED BASED	6,991	6,176	6,675	\$8,861,300	\$ 8,001,583	\$9,009,672
ABILITY BASED						
Regents' Special Aid	402	204	270	\$ 261,111	\$ 233,651	\$ 309,876
U of N Foundation Aid	279	272	275	159,117	190,679	190,000
Honors Scholarship	29	38	32	35,585	46,902	39,814
UNO Alumni Association	-	42	45	-	16,725	18,000
Other Scholarships	172	412	450	111,234	173,727	190,000
TOTAL ABILITY BASED	882	968	1,072	\$ 567,047	\$ 661,684	\$ 747,690
Total Aid	7,873	7,144	7,747	\$ 9,428,347	\$ 8,663,267	\$9,757,362

Source: Assistant Vice Chancellor for Finance

UNIVERSITY OF NEBRASKA AT OMAHA
 ANALYSIS OF SCORES ON AMERICAN COLLEGE
 TESTING (ACT) EXAMINATION BY UNO FIRST
 TIME FRESHMEN

1988-89

UNO FRESHMEN

***** PERCENTILE *****

Standard Score	English			Mathematics			Social Studies			Natural Sciences			Composite		
	M	F	T	M	F	T	M	F	T	M	F	T	M	F	T
32	99	99	99	99	99	99	99	99	99	97	99	98	99	99	99
28	99	98	98	94	97	96	94	97	95	77	89	83	96	98	97
24	92	86	89	78	83	81	76	84	80	53	70	62	79	84	82
20	60	51	56	55	68	61	51	63	57	30	45	38	50	61	55
16	30	22	26	35	49	42	34	46	40	9	20	15	23	34	29
12	9	7	8	21	32	27	18	27	22	1	8	4	5	12	9
8	2	2	2	8	17	13	5	9	7	1	1	1	1	1	2
4	1	1	1	1	5	3	1	1	1	1	1	1	1	1	1
UNO Mean Scores	18.3	19.3	18.8	18.4	16.0	17.2	19.0	17.1	18.0	23.3	20.7	22.0	19.9	18.4	19.1
UNO Std. Deviation	4.6	4.7	4.9	6.7	7.3	7.1	6.4	6.5	6.5	5.4	5.7	5.7	4.7	5.1	5.0
National Mean Scores	18.6	19.5	19.0	19.1	16.7	17.8	19.1	17.2	18.1	23.3	20.7	21.9	20.2	18.6	19.3

NOTE: The "UNO Freshmen" group consisted of 1,264 first-time Freshmen enrolled at UNO in Fall 1988.
 Each of these students took the ACT test in the 1986-87 or 1987-88 testing cycles.

Source: Office of Student Development Services

UNIVERSITY OF NEBRASKA AT OMAHA

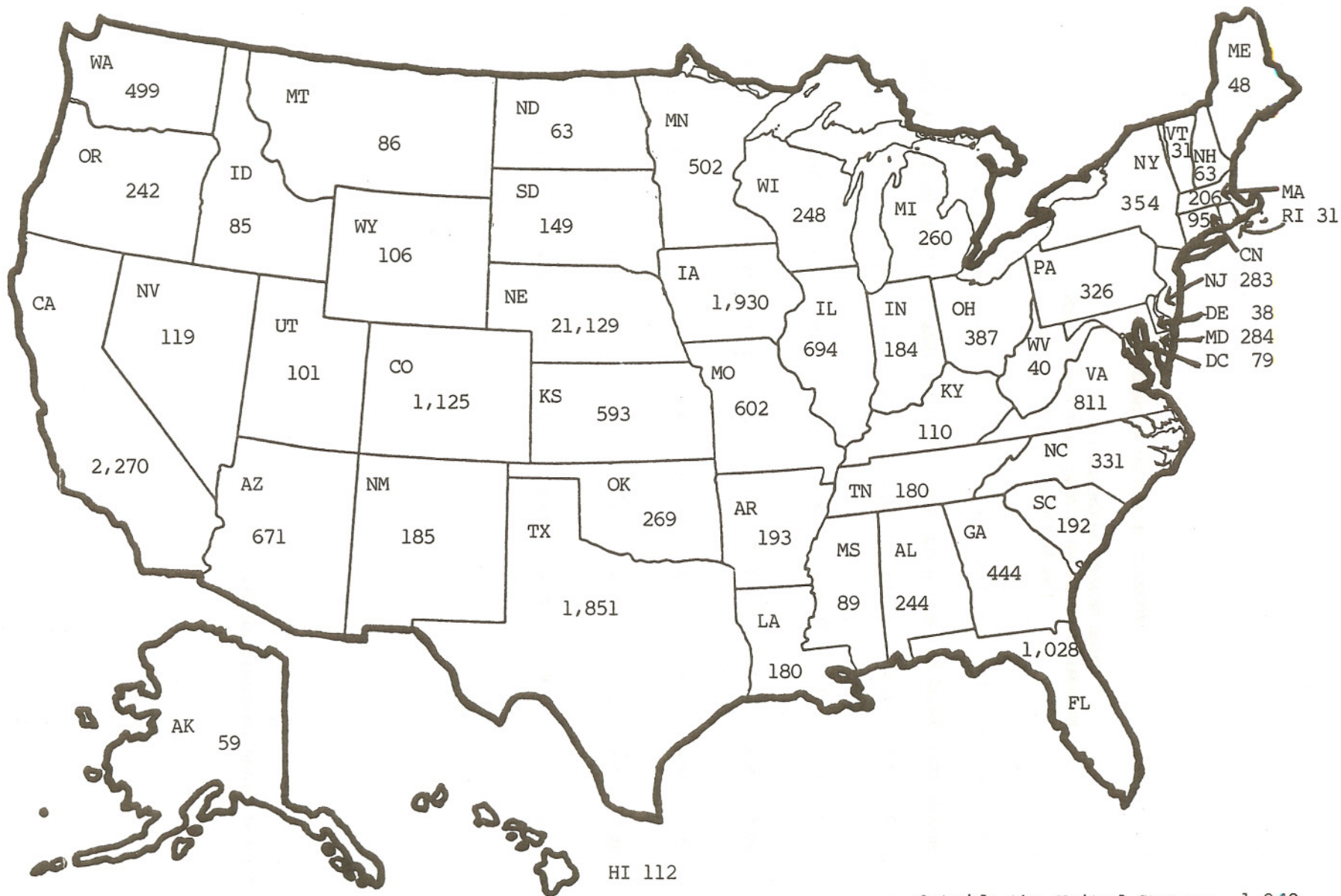
SCORES ON AMERICAN COLLEGE TESTING (ACT)
 EXAMINATION BY UNO AND NATIONAL FIRST-TIME FRESHMEN:
 1983-84 through 1988-89

	* * * * * UNO * * * * *					* * * * * NATIONAL * * * * *				
	<u>English</u>	<u>Math</u>	<u>Social Sci</u>	<u>Natural Sci</u>	<u>Comp</u>	<u>English</u>	<u>Math</u>	<u>Social Sci</u>	<u>Natural Sci</u>	<u>Comp</u>
1988-89	18.8	17.2	18.0	22.0	19.1	19.0	17.8	18.1	21.9	19.3
1987-88	18.3	17.0	17.5	21.2	18.6	18.7	17.4	17.8	21.6	19.0
1986-87	18.4	16.9	17.7	20.9	18.6	18.9	17.7	18.2	21.7	19.2
1985-86	18.0	17.2	17.5	21.2	18.6	18.6	17.8	17.9	21.6	19.1
1984-85	18.0	17.5	17.3	20.8	18.5	18.1	17.3	17.7	21.1	18.7
1983-84	17.7	17.4	17.8	20.8	18.6	18.2	17.4	17.8	21.2	18.8

Source: Office of Student Development Services

UNIVERSITY OF NEBRASKA AT OMAHA

RESIDENCE OF ALUMNI: 1987



Outside the United States: 1,040

THE UNIVERSITY OF NEBRASKA AT OMAHA

Faculty



UNIVERSITY OF NEBRASKA AT OMAHA

AVERAGE AGE, AVERAGE YEARS IN RANK, AND AVERAGE YEARS AT UNO
OF ALL FULL-TIME FACULTY; BY COLLEGE AND RANK:
1988-89

<u>COLLEGE, RANK</u>	<u>Total Number</u>	<u>Average Age</u>	<u>Average Years in Rank</u>	<u>Average Years at UNO</u>
ARTS & SCIENCES				
Professor	62	52.0	10.0	19.9
Associate Professor	58	47.5	8.5	15.5
Assistant Professor	42	44.2	7.3	9.7
Instructor	19	40.5	4.2	4.5
Assistant Instructor	6	34.2	5.5	5.5
College Total	187	47.1	8.2	14.2
BUSINESS ADMINISTRATION				
Professor	22	53.4	11.0	16.0
Associate Professor	14	46.7	6.6	10.0
Assistant Professor	18	41.9	4.0	5.5
Instructor	16	40.9	2.4	2.4
College Total	70	46.2	6.4	9.0
EDUCATION				
Professor	22	56.1	14.4	21.3
Associate Professor	20	49.4	9.2	15.6
Assistant Professor	16	46.3	6.9	7.5
Instructor	1	30.0	1.0	1.0
College Total	59	50.7	10.4	15.3
FINE ARTS				
Professor	10	51.7	10.9	20.9
Associate Professor	12	46.4	7.0	14.0
Assistant Professor	10	37.7	3.5	4.2
College Total	32	45.3	7.1	13.1
LIBRARY				
Associate Professor	3	47.0	3.0	10.0
Assistant Professor	7	43.3	3.8	6.0
Instructor	3	39.0	1.7	1.7
College Total	13	43.2	3.2	5.9
PUBLIC AFFAIRS AND COMMUNITY SERVICE				
Professor	13	55.8	8.4	16.8
Associate Professor	23	44.9	6.4	11.1
Assistant Professor	10	42.9	3.3	5.7
Instructor	1	36.0	0.0	0.0
College Total	47	47.3	6.1	11.3
TOTAL UNO				
Professor	129	53.3	10.8	19.2
Associate Professor	130	47.1	7.8	13.9
Assistant Professor	103	43.3	5.7	7.4
Instructor	40	40.2	3.1	3.2
Assistant Instructor	6	34.2	5.5	5.5
University Total	408	47.2	7.7	12.8

Source: Office of Institutional Research

UNIVERSITY OF NEBRASKA AT OMAHA

41

FULL-TIME FACULTY HIGHEST EARNED DEGREE
BY COLLEGE AND ACADEMIC RANK: 1988-89

<u>COLLEGE, RANK</u>	<u>Total Number</u>	<u>** Percentage **</u>	
		<u>Less-Than Doctoral</u>	<u>Doctoral</u>
ARTS & SCIENCES			
Professor	62	0.0	100.0
Associate Professor	58	12.1	87.9
Assistant Professor	42	19.0	81.0
Instructor	19	100.0	0.0
Assistant Instructor	6	80.0	20.0
College Total	187	21.4	78.6
BUSINESS ADMINISTRATION			
Professor	22	0.0	100.0
Associate Professor	14	14.3	85.7
Assistant Professor	18	38.9	61.1
Instructor	16	93.8	6.2
College Total	70	34.3	65.7
EDUCATION			
Professor	22	0.0	100.0
Associate Professor	20	10.0	90.0
Assistant Professor	16	18.7	81.3
Instructor	1	100.0	0.0
College Total	59	10.2	89.8
FINE ARTS			
Professor	10	10.0	90.0
Associate Professor	12	33.3	66.7
Assistant Professor	10	70.0	30.0
College Total	32	37.5	62.5
LIBRARY			
Associate Professor	3	100.0	0.0
Assistant Professor	7	100.0	0.0
Instructor	3	100.0	0.0
College Total	13	100.0	0.0
PUBLIC AFFAIRS AND COMMUNITY SERVICE			
Professor	13	7.7	92.3
Associate Professor	23	8.7	91.3
Assistant Professor	10	10.0	90.0
Instructor	1	100.0	0.0
College Total	47	8.5	91.5
TOTAL UNO			
Professor	129	1.6	98.4
Associate Professor	130	15.4	84.6
Assistant Professor	103	31.1	68.9
Instructor	40	95.0	5.0
Assistant Instructor	6	100.0	0.0
University Total	408	34.0	76.0

Source: Office of Institutional Research

UNIVERSITY OF NEBRASKA AT OMAHA

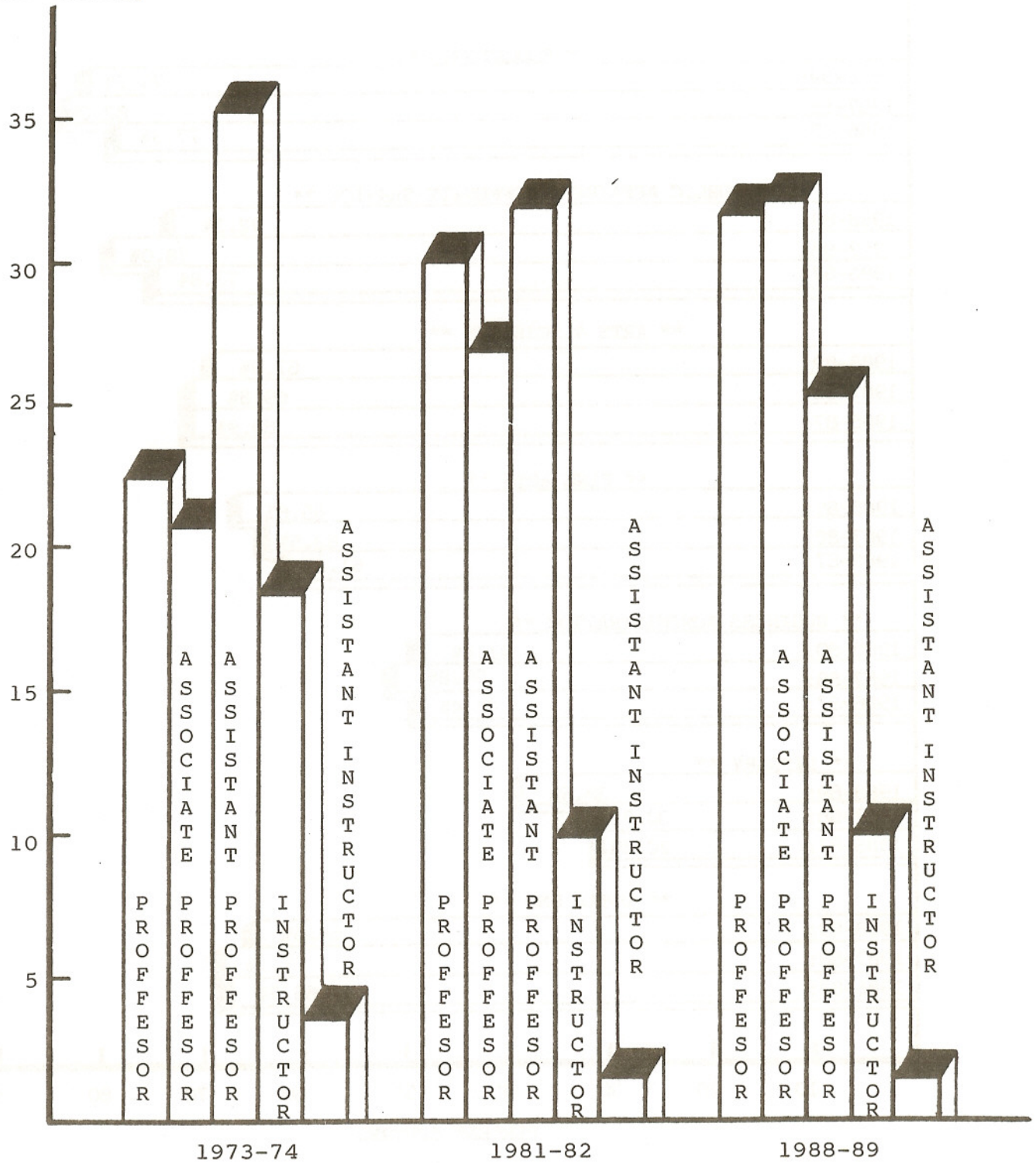
DISTRIBUTION OF FULL-TIME FACULTY
BY COLLEGE, RANK, AND TENURE STATUS: 1988-89

<u>COLLEGE, RANK</u>	<u>Total Number</u>	<u>Non-Tenured Number</u>	<u>Tenured Number</u>	<u>Percent Tenured</u>
ARTS & SCIENCES				
Professor	62	0	62	100.0
Associate Professor	58	7	51	87.9
Assistant Professor	42	28	14	33.3
Instructor	19	19	0	0.0
Assistant Instructor	6	6	0	0.0
College Total	187	60	127	67.9
BUSINESS ADMINISTRATION				
Professor	22	3	19	86.4
Associate Professor	14	6	8	57.1
Assistant Professor	18	16	2	11.1
Instructor	16	16	0	0.0
College Total	70	41	29	41.4
EDUCATION				
Professor	22	0	22	100.0
Associate Professor	20	0	20	100.0
Assistant Professor	16	11	5	31.2
Instructor	1	1	0	0.0
College Total	59	12	47	79.7
FINE ARTS				
Professor	10	0	10	100.0
Associate Professor	12	1	11	91.7
Assistant Professor	10	10	0	0.0
College Total	32	11	21	65.6
LIBRARY				
Associate Professor	3	0	3	100.0
Assistant Professor	7	5	2	28.6
Instructor	3	3	0	0.0
College Total	13	8	5	38.5
PUBLIC AFFAIRS AND COMMUNITY SERVICE				
Professor	13	0	13	100.0
Associate Professor	23	3	20	87.0
Assistant Professor	10	9	1	10.0
Instructor	1	1	0	0.0
College Total	47	13	34	72.3
TOTAL UNO				
Professor	129	3	126	97.7
Associate Professor	130	17	114	87.7
Assistant Professor	103	77	24	23.3
Instructor	40	42	0	0.0
Assistant Instructor	6	6	0	0.0
University Total	408	145	263	64.5

Source: Office of Institutional Research

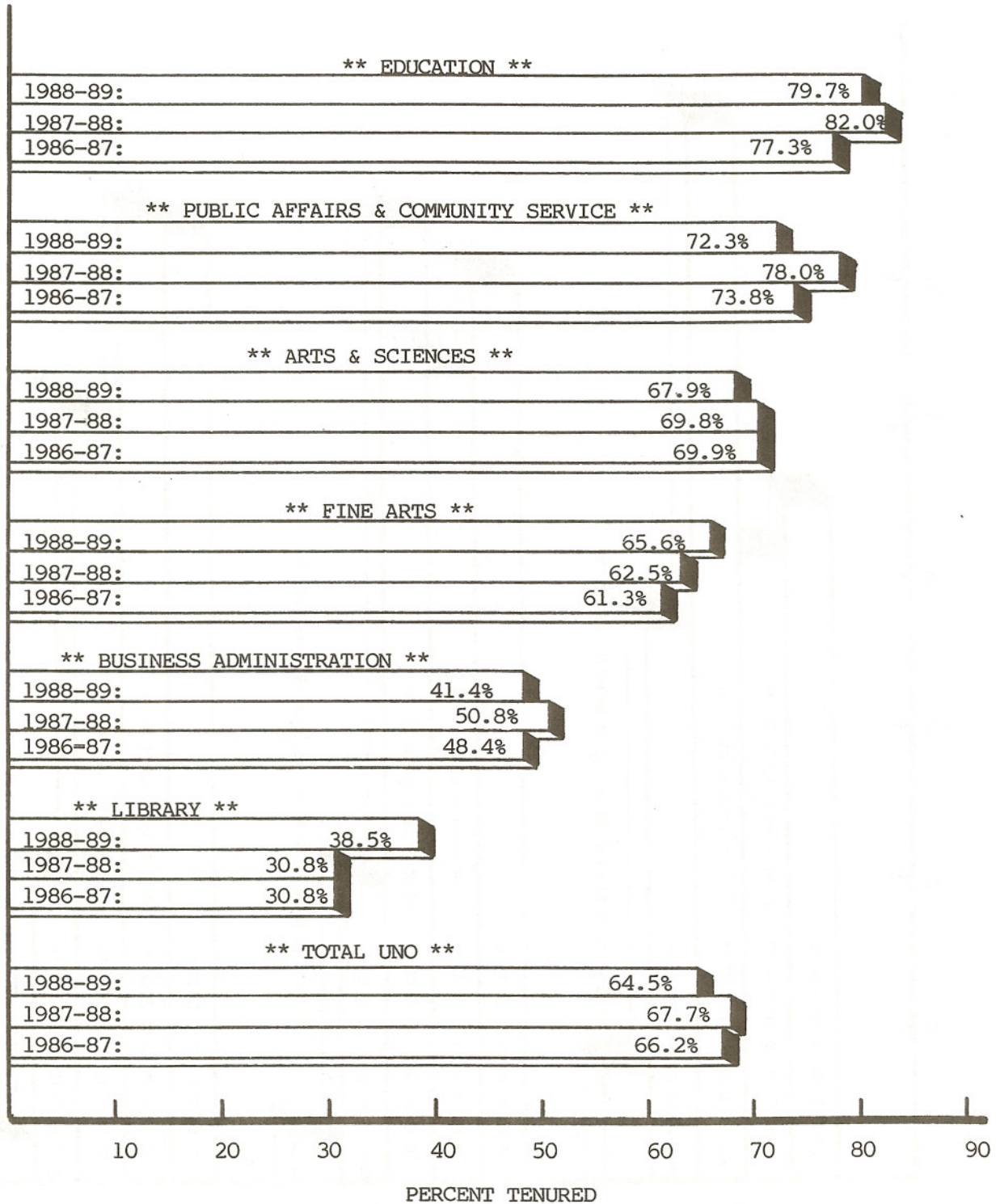
RANK DISTRIBUTION OF THE FULL-TIME UNO FACULTY: 1973-74, 1981-82 and 1988-89

Percent of Total Faculty



UNIVERSITY OF NEBRASKA AT OMAHA

PERCENTAGE OF FULL-TIME FACULTY HOLDING TENURE;
BY COLLEGE AND TOTAL UNO: 1986-87 THROUGH 1988-89



Source: Office of Institutional Research

UNIVERSITY OF NEBRASKA AT OMAHA

FULL-TIME GRADUATE FACULTY STATUS;
BY COLLEGE AND ACADEMIC RANK: 1988-89

<u>COLLEGE, RANK</u>	<u>Total Number</u>	***** PERCENTAGE *****		
		<u>Not On Graduate Faculty</u>	<u>Graduate Faculty Member</u>	<u>Graduate Faculty Fellow</u>
ARTS & SCIENCES				
Professor	62	1.6	37.1	61.3
Associate Professor	58	12.0	62.1	25.9
Assistant Professor	42	69.0	26.2	4.8
Instructor	19	100.0	0.0	0.0
Assistant Instructor	6	100.0	0.0	0.0
College Total	187	33.2	37.4	29.4
BUSINESS ADMINISTRATION				
Professor	22	4.6	31.8	63.6
Associate Professor	14	35.7	42.9	21.4
Assistant Professor	18	83.3	11.1	5.6
Instructor	16	100.0	0.0	0.0
College Total	70	52.9	21.4	25.7
EDUCATION				
Professor	22	0.0	59.1	40.9
Associate Professor	20	0.0	85.0	15.0
Assistant Professor	16	62.2	31.2	6.2
Instructor	1	100.0	0.0	0.0
College Total	59	18.7	59.3	22.0
FINE ARTS				
Professor	10	0.0	40.0	60.0
Associate Professor	12	8.4	83.3	8.3
Assistant Professor	10	80.0	20.0	0.0
College Total	32	28.1	50.0	21.9
LIBRARY				
Associate Professor	3	100.0	0.0	0.0
Assistant Professor	7	100.0	0.0	0.0
Instructor	3	100.0	0.0	0.0
College Total	13	100.0	0.0	0.0
PUBLIC AFFAIRS AND COMMUNITY SERVICE				
Professor	13	7.7	30.8	61.5
Associate Professor	23	21.7	65.2	13.1
Assistant Professor	10	30.0	60.0	10.0
Instructor	1	100.0	0.0	0.0
College Total	47	21.3	53.2	25.5
TOTAL UNO				
Professor	129	2.3	39.5	58.2
Associate Professor	130	16.2	64.6	19.2
Assistant Professor	103	69.9	25.2	4.9
Instructor	40	100.0	0.0	0.0
Assistant Instructor	6	100.0	0.0	0.0
University Total	408	34.8	39.5	25.7

Source: Office of Institutional Research

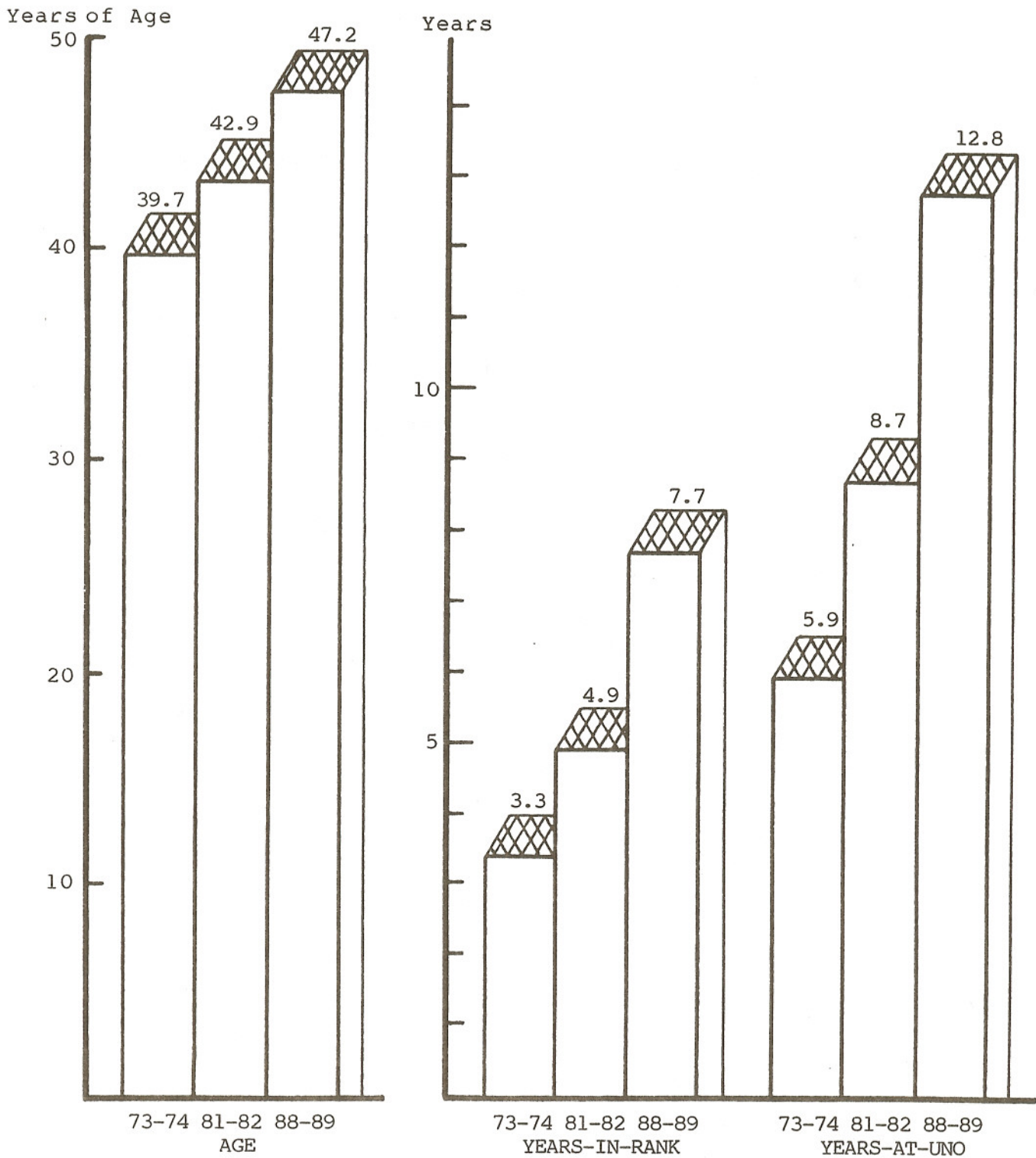
UNIVERSITY OF NEBRASKA AT OMAHA
 SELECTED DEMOGRAPHIC MEASURES OF THE
 FULL-TIME UNO FACULTY: 1973-74, 1981-82 and 1988-89

	<u>1973-74</u>	<u>1981-82</u>	<u>1988-89</u>
Average Age	39.7 yrs	42.9 yrs	47.2 yrs
Average Years-in-Rank	3.3 yrs	4.9 yrs	7.7 yrs
Average Years-at-UNO	5.9 yrs	8.7 yrs	12.8 yrs
Percent Tenured	48.0%	60.0%	64.5%
Percent Professor	22.6%	29.9%	31.6%
Percent Associate Professor	20.8%	26.8%	31.9%
Percent Assistant Professor	35.3%	31.7%	25.2%
Percent Instructor	18.3%	10.0%	9.8%
Percent Assistant Instructor	3.0%	1.6%	1.5%

Source: Office of Institutional Research

UNIVERSITY OF NEBRASKA AT OMAHA

AVERAGE AGE, AVERAGE YEARS-IN-RANK, AND
AVERAGE YEARS-AT-UNO; FULL-TIME FACULTY:
1973-74, 1981-82, and 1988-89



THE UNIVERSITY OF NEBRASKA AT OMAHA

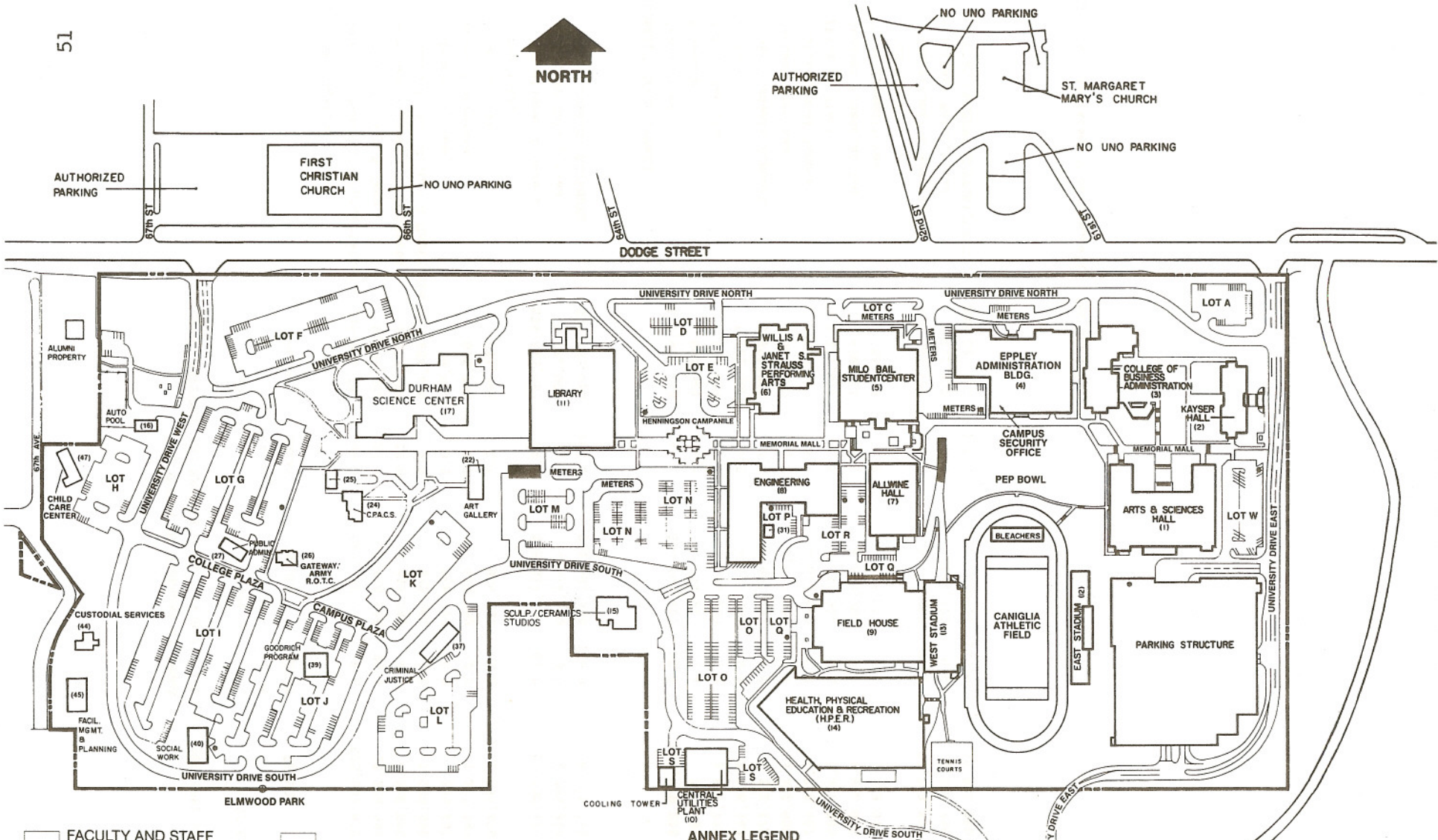
Physical Plant and Budget



UNIVERSITY OF NEBRASKA AT OMAHA
UNIVERSITY BUILDING SPACE SUMMARY
AS OF APRIL 1989

<u>Building Name</u>	<u>Net Assignable Square Feet</u>	<u>Total Gross Square Feet</u>
Allwine Farm Residence	1,324	1,642
Allwine Hall	73,849	117,720
Arts & Science Hall	79,841	163,851
Central Utilities Plant	2,890	15,483
Center Urban Education	13,500	15,082
Chancellor's Residence	4,362	6,693
College of Business Administration	51,181	82,921
East Stadium	1,520	2,826
Engineering	59,868	93,542
Eppley Administration Building	75,936	115,526
Field House	56,599	62,673
Health, Phys. Educ. & Recreation	111,076	156,318
Kayser Hall	33,353	59,861
Library	133,933	159,300
Milo Bail Student Center	71,342	114,650
Peter Kiewit Conference Center	58,449	80,048
Durham Science Center	92,077	169,614
Sculpture/Ceramics Studios	6,626	7,710
West Stadium	17,940	26,784
Willis A. & Janet S. Strauss		
Performing Arts Center	<u>29,139</u>	<u>57,596</u>
Permanent Bldg Sub-Total	974,805 NSF	1,509,840 GSF
Annex 16	2,446	3,572
Annex 22	4,536	7,185
Annex 24	6,952	10,536
Annex 25	1,333	1,830
Annex 26	2,783	4,747
Annex 27	3,330	5,100
Annex 31	791	885
Annex 37	3,584	6,053
Annex 39	5,362	7,233
Annex 40	4,845	7,922
Annex 44	1,740	2,552
Annex 45	3,726	5,176
Annex 47	<u>4,126</u>	<u>4,840</u>
Temporary Bldg Sub-Total	45,554 NSF	67,631 GSF
GRAND TOTAL	1,020,359 NSF	1,577,471 GSF

Source: Director Facilities Planning & Management



- FACULTY AND STAFF
- STUDENTS
- TWO WHEEL VEHICLES
- DUAL PURPOSE (READ SIGNS FOR TIME)

- METERED AREAS
- MAIN HANDICAP ENTRANCES
- HANDICAP PARKING STALLS

ANNEX LEGEND

- 16 AUTO POOL
- 22 ART GALLERY
- 24 PUBLIC AFFAIRS & COMM. SERVICES
- 25 GROUNDS OFFICE & SHOP
- 26 GATEWAY/ARMY R.O.T.C.
- 27 DEPT. PUBLIC ADMINISTRATION
- 31 ENGINEERING LAB
- 37 CRIMINAL JUSTICE
- 39 GOODRICH PROGRAM
- 40 SOCIAL WORK
- 44 CUSTODIAL SERVICES
- 45 FACILITIES MANAGEMENT & PLANNING
- 47 CHILD CARE CENTER

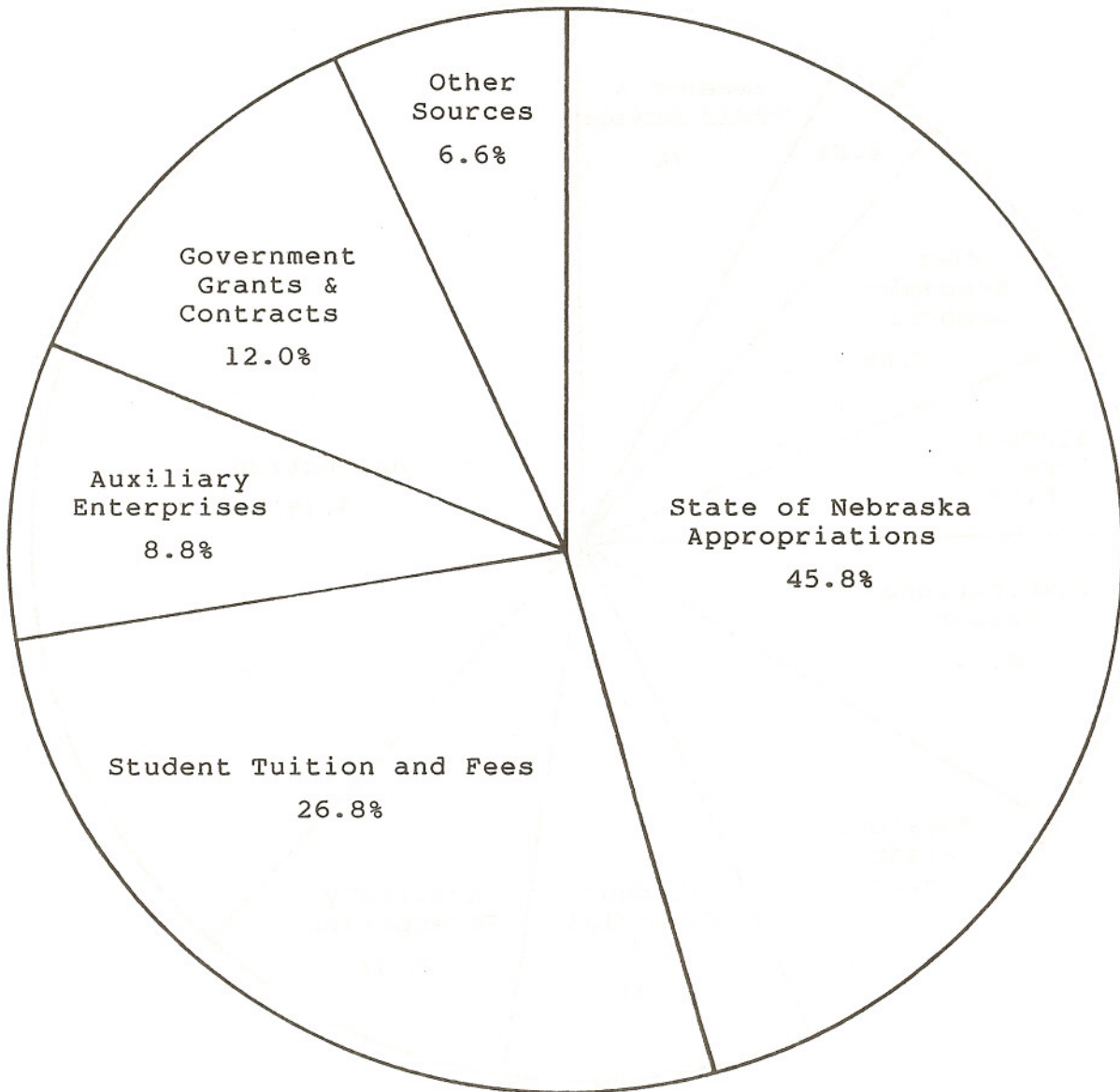
UNIVERSITY OF NEBRASKA AT OMAHA
CURRENT REVENUES AND EXPENDITURES: 1980-81, 1986-87, AND 1987-88

	1980-81		1986-87		1987-88		** Percent Change	
	<u>Amount</u>	<u>Pct of Whole</u>	<u>Amount</u>	<u>Pct of Whole</u>	<u>Amount</u>	<u>Pct of Whole</u>	<u>80-81 to 87-88</u>	<u>86-87 to 87-88</u>
CURRENT REVENUES:								
State of Nebraska Appropriations	\$19,095,701	49.3	\$24,157,180	46.8	\$25,965,672	45.8	36.0	7.5
Student Tuition & Fees	9,187,332	23.7	14,488,356	28.1	15,229,596	26.8	65.8	5.1
Government Grants & Contracts	4,227,188	10.9	5,043,243	9.8	6,826,989	12.0	61.5	35.4
Private Gifts, Grants & Contracts	804,460	2.1	833,562	1.6	1,099,929	1.9	36.7	32.0
Endowment Income	39,604	0.1	168,472	0.3	235,297	0.4	494.1	39.7
Sales & Services	656,866	1.7	1,420,152	2.8	1,377,593	2.4	109.7	-3.0
Other Sources	831,342	2.1	806,790	1.6	1,055,339	1.9	26.9	30.8
Sub-Total,								
Educational & General	\$34,842,483	89.9	\$46,917,755	91.0	51,790,415	91.2	48.6	10.4
Auxiliary Enterprises	3,922,997	10.1	4,674,573	9.0	4,964,840	8.8	26.6	6.2
TOTAL CURRENT REVENUES	\$38,765,480	100.0	\$51,592,328	100.0	56,755,255	100.0	46.4	10.0
CURRENT EXPENDITURES:								
Instruction	\$15,988,248	41.8	\$20,408,105	39.8	\$21,479,235	38.4	34.3	5.2
Research	698,381	1.8	734,213	1.4	770,467	1.4	10.3	4.9
Public Service	512,621	1.4	1,694,293	3.3	3,481,772	6.2	579.2	105.5
Library	1,722,580	4.5	2,495,491	4.9	2,436,142	4.3	41.4	-2.4
Other Academic Support	2,951,943	7.7	3,992,293	7.8	4,172,172	7.4	41.3	4.5
Student Services	2,580,939	6.8	3,029,258	5.9	3,342,606	6.0	29.5	10.3
Institutional Support	3,339,837	8.7	4,612,993	9.0	4,975,467	8.9	49.0	7.9
Physical Plant	3,273,477	8.6	4,337,931	8.5	5,070,905	9.1	54.9	16.9
Student Financial Aid	3,489,061	9.1	4,860,992	9.5	4,972,066	8.9	42.5	2.3
Other Expenditures	25,853	0.1	27,097	0.1	23,019	0.1	-11.0	-15.1
Sub-Total								
Educational & General	\$34,583,480	90.5	\$46,192,666	90.1	50,723,851	90.7	46.7	9.8
Auxiliary Enterprises	3,645,332	9.5	5,084,773	9.9	5,187,738	9.3	42.3	2.0
TOTAL CURRENT EXPENDITURES	\$38,228,272	100.0	\$51,277,439	100.0	55,911,589	100.0	46.3	9.0

Source: Assistant Vice Chancellor for Finance

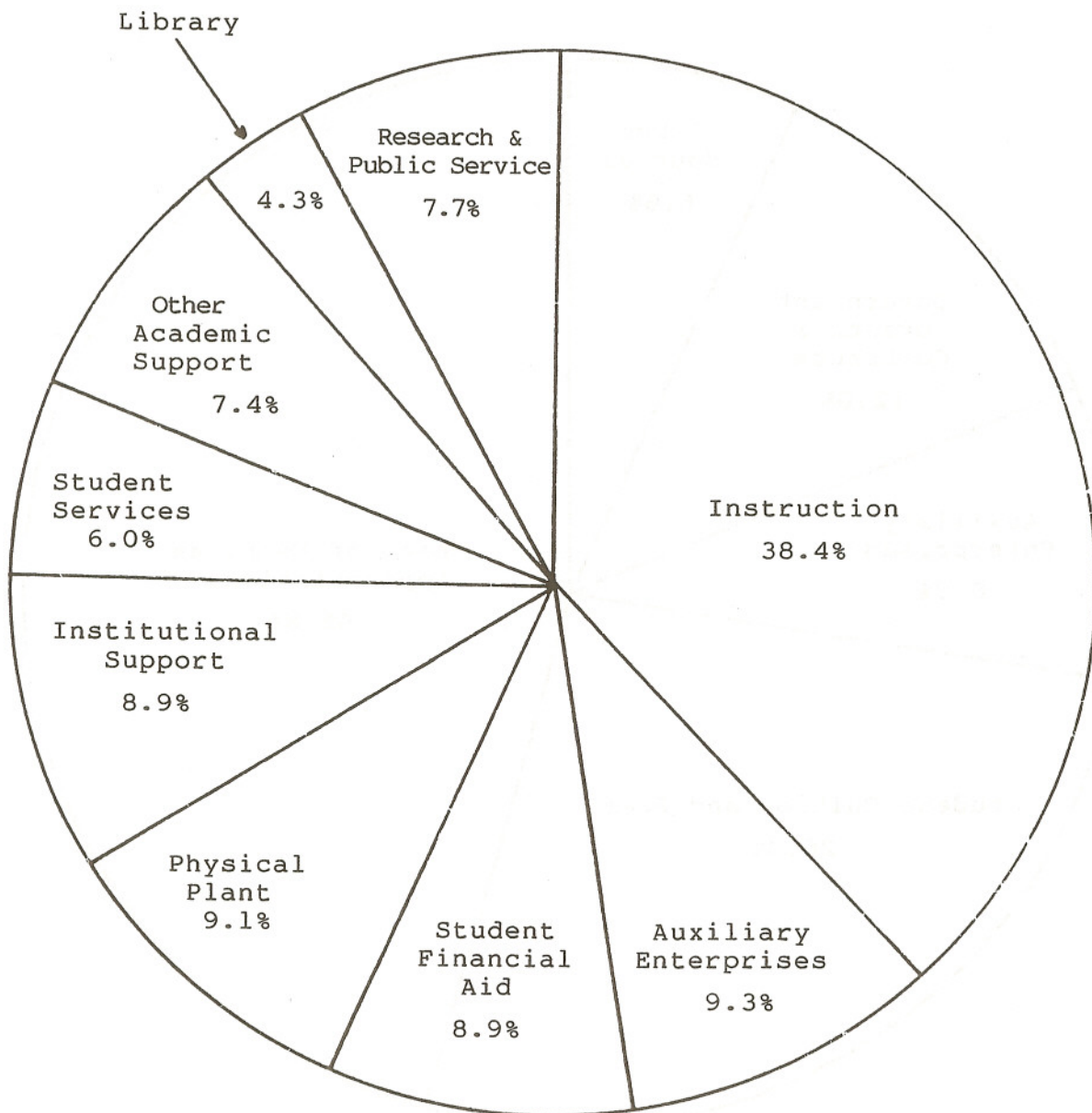
UNIVERSITY OF NEBRASKA AT OMAHA

DISTRIBUTION OF CURRENT REVENUES
FOR THE YEAR ENDED JUNE 30, 1988



Source: Assistant Vice Chancellor for Finance

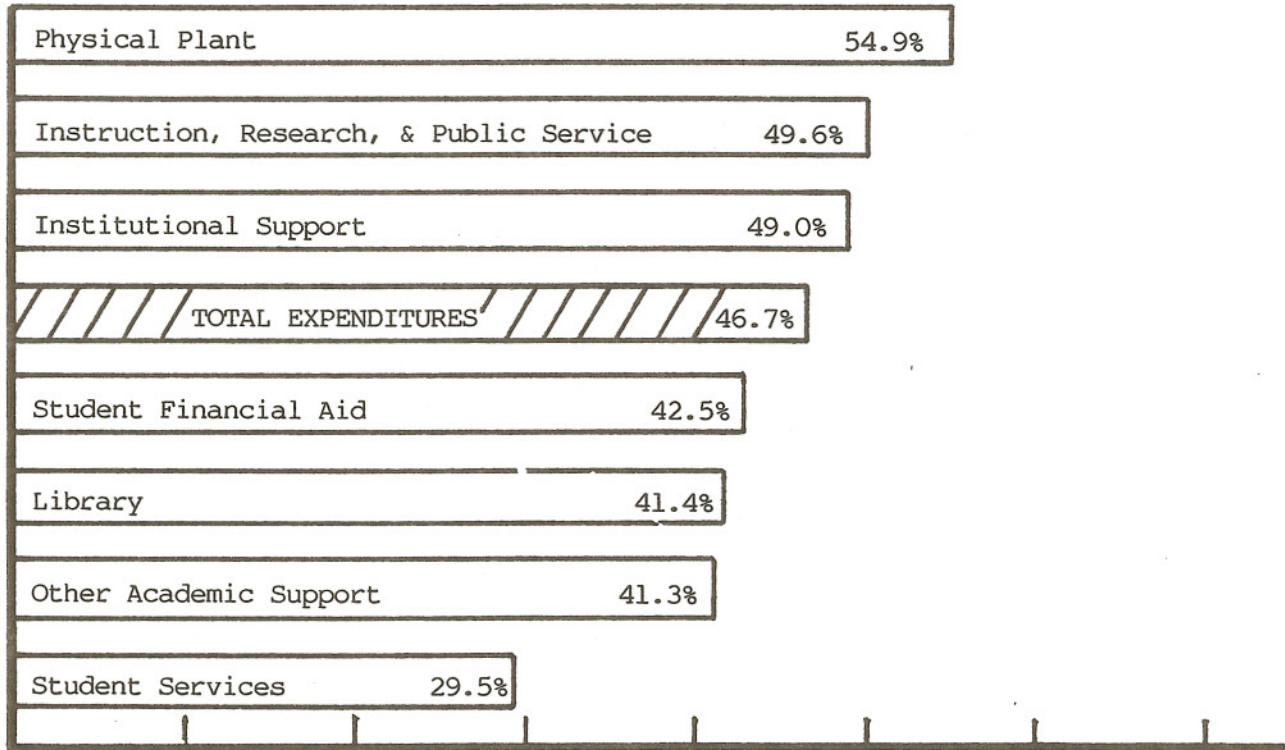
UNIVERSITY OF NEBRASKA AT OMAHA
DISTRIBUTION OF CURRENT EXPENDITURES
FOR THE YEAR ENDED JUNE 30, 1988



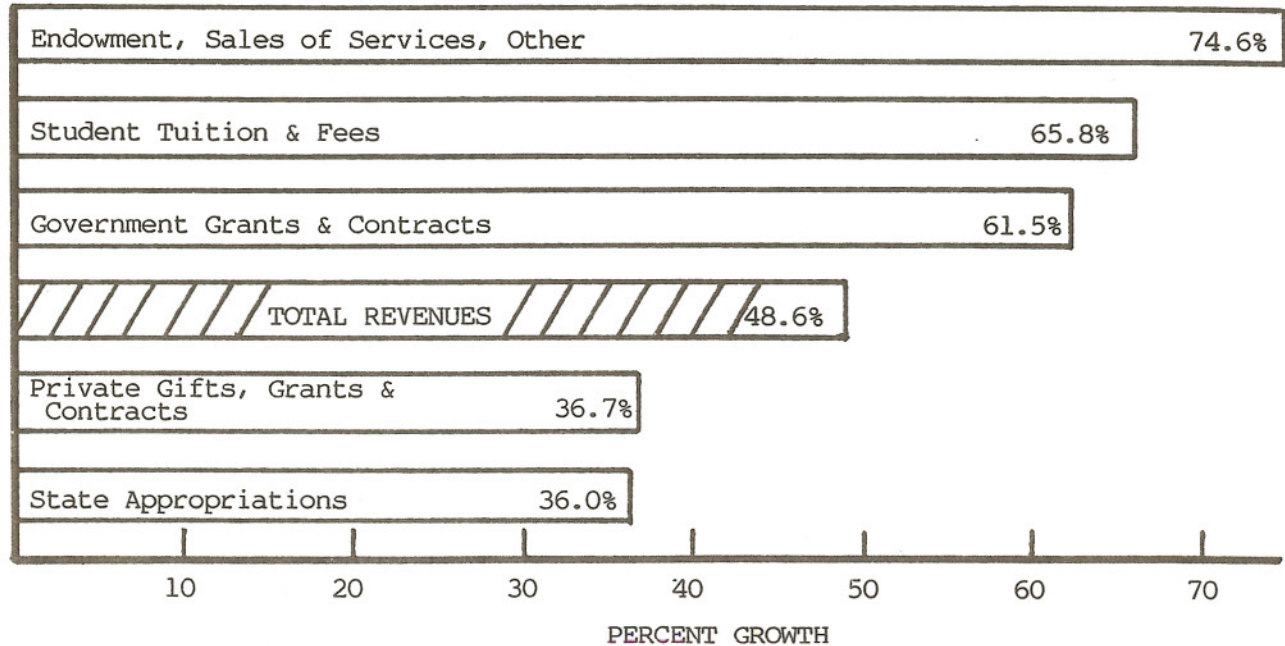
Source: Assistant Vice Chancellor for Finance

PERCENTAGE GROWTH; EDUCATIONAL & GENERAL
EXPENDITURES & REVENUES: 1980-81 to 1987-88

E
X
P
E
N
D
I
T
U
R
E
S

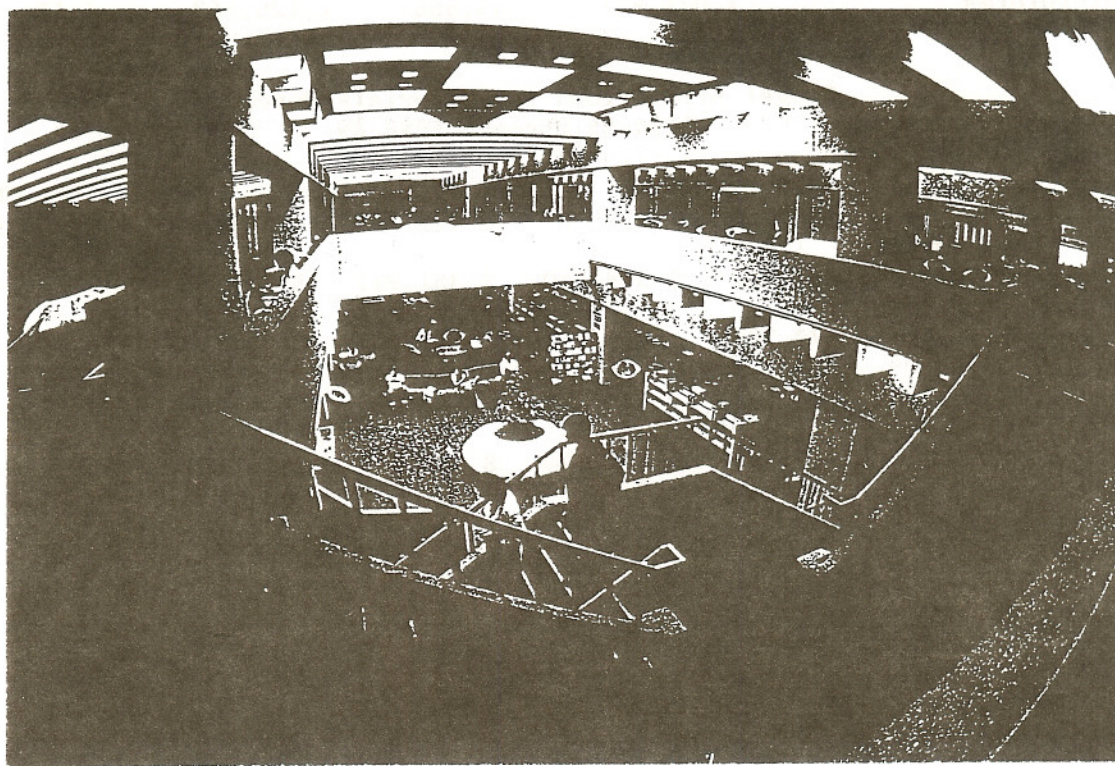


R
E
V
E
N
U
E
S



THE UNIVERSITY OF NEBRASKA AT OMAHA

Library



UNIVERSITY OF NEBRASKA AT OMAHA

UNIVERSITY LIBRARY
General Information

The University Library, a three-level building built in 1975 and located at the west end of the campus, offers many services to its users and contains materials and facilities for study and research. The collection includes approximately 590,000 volumes, over 1,000,000 microform items, and 7,000 pieces of audio-visual material. The total number of serials subscribed to is over 5,000, including almost 200 newspapers from around the world. As a government document depository, the University Library collects most federal and Nebraska state publications and also has documents from some other states and from the United Nations. Nearly all of the Library's collection is on open shelves and is arranged according to the Library of Congress classification system.

Growth of Collections
June 30, 1987 through June 30, 1988

	Total <u>6/30/87</u>	Net Added <u>1987-88</u>	Total <u>6/30/88</u>	Pct Change <u>1987-88</u>
Books & Serials: Titles	451,157	10,502	461,659	2.3%
Books & Serials: Volumes	574,546	16,173	590,719	2.8%
Government Document Titles	406,464	11,344	417,808	2.8%
Total Microforms	1,076,977	43,686	1,120,663	4.1%

Budget Allocations for Materials Purchases
1984-85 through 1988-89

	<u>1984-85</u>	<u>1985-86</u>	<u>1986-87</u>	<u>1987-88</u>	<u>1988-89</u>	Pct Change <u>1984-85 to 1988-89</u>
Books	\$ 346,373	\$ 381,010	\$ 378,010	\$ 351,911	\$ 351,911	1.6%
Serials	428,934	470,705	444,751	511,967	555,139	29.4%
Bindings	37,873	38,684	38,684	39,845	41,040	8.4%
Total	\$ 813,180	\$ 890,399	\$ 861,444	\$ 903,723	\$ 948,090	16.6%

Sources: UNO Undergraduate Catalog, 1988-89 and the University Library
Administrative Office

THE UNIVERSITY OF NEBRASKA AT OMAHA

Research



UNIVERSITY OF NEBRASKA AT OMAHA

EXTERNAL FUNDING

During the 1986-87 fiscal year, UNO faculty and staff submitted 128 proposals totaling \$29,604,579 to external agencies for funding. Of these proposals, 92 were funded at a total of \$8,859,555. The tables below show the detail of the funded proposals.

EXTERNAL FUNDING IN 1986-87
AND COMPARISON TO 1985-86
BY PURPOSE OF PROJECT

	<u>Number of Proposals</u>	<u>Percent of Whole</u>	<u>Amount Funded 1986-87</u>	<u>Percent of Whole</u>	<u>Amount Funded 1985-86</u>	<u>Amount Funded Percent Change 1986-87 Over 1985-86</u>
Instruction	26	4%	\$ 399,246	8%	\$ 496,078	-20%
Public Service	28	48%	4,276,550	18%	1,127,671	+279%
Research	37	9%	795,681	7%	439,805	+81%
Student Aid	31	38%	3,379,978	65%	4,073,602	-17%
Other	6	1%	8,100	2%	119,167	-93%
TOTAL	128	100%	\$8,859,555	100%	\$6,256,323	+42%

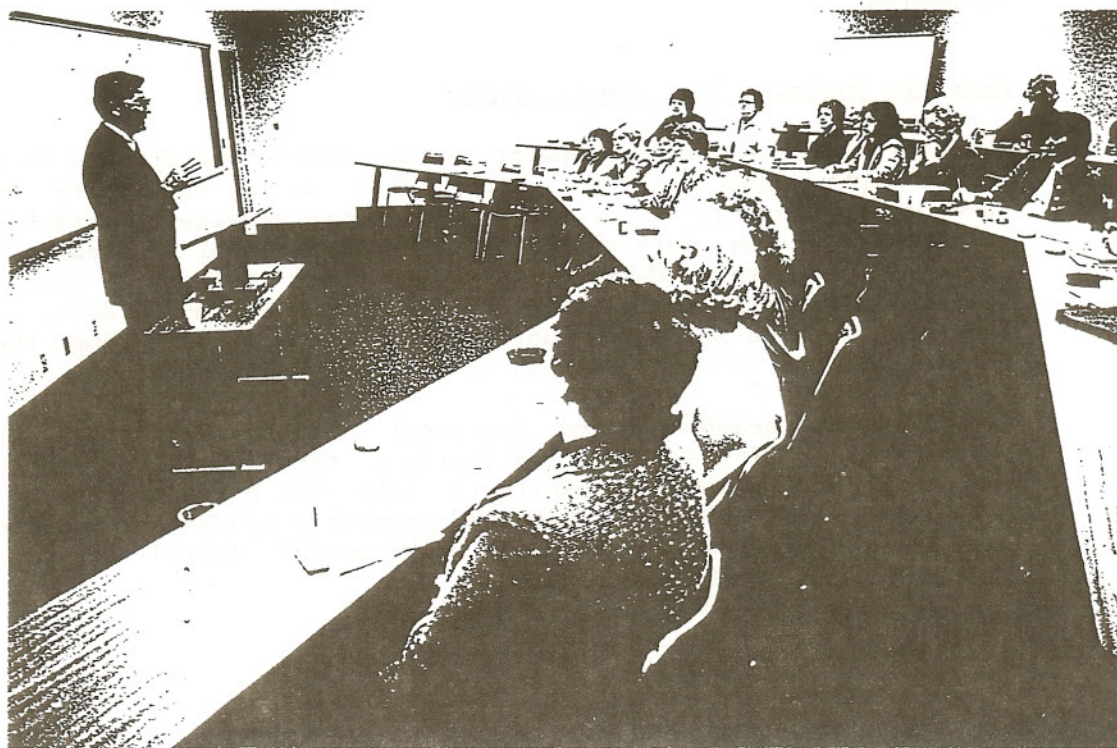
EXTERNAL FUNDING IN 1986-87
AND COMPARISON TO 1985-86
BY SOURCE OF FUNDS

	<u>Amount Funded 1986-87</u>	<u>Percent of Whole</u>	<u>Amount Funded 1985-86</u>	<u>Percent Change 1986-87 Over 1985-86</u>
Federal Agencies	\$7,842,183	88%	\$5,504,181	+42%
State Agencies	350,258	4%	376,886	-7%
Local Agencies	133,428	2%	91,185	+46%
Private	533,686	6%	284,071	+88%
TOTAL	\$8,859,555	100%	\$6,256,323	+42%

Source: Office of Grants Development, Annual Report, 1985-86 and 1986-87

THE UNIVERSITY OF NEBRASKA AT OMAHA

Non-Credit Programs



UNIVERSITY OF NEBRASKA AT OMAHA

NON-CREDIT PROGRAMS

College of Continuing Studies

The college of Continuing Studies (CCS) at UNO offers both credits and non-credit activities for persons wishing to continue their education. The College offers an extensive schedule of evening, summer, and off-campus credit classes for those who must work, but wish to pursue a college degree. CCS offers the Bachelor of General Studies degree, as well as non-credit programs and courses for those who have special interests. Conferences and institutes are offered, serving local and national professional groups and associations, and business, academic, and community needs.

Center for Public Affairs Research

The Center for Public Affairs Research provides applied research and technical assistance to private, governmental, and not-for-profit organizations throughout Nebraska. The Center is an important vehicle for promoting interdisciplinary research and technical assistance on social, political, and economic issues, and on public policy strategies.

The Center publishes various monographs including the annual Nebraska Policy Choices. Center staff also present annually the Urban Conditions Research Program and participate in the Legislative Issues Symposium.

Nebraska Business Development Center

The Nebraska Business Development Center (NBDC) was founded in 1977 as one of eight pilot centers, known then as the University Business Development Centers. Since 1978, NBDC basic service centers have been established at the University of Nebraska-Lincoln, Kearney State College, Wayne State College, Chadron State College, Peru State College, Mid-Plains Community College in North Platte, and in Scottsbluff. The statewide coordination is provided through the Omaha center, located in UNO's College of Business Administration.

NBDC delivers management and technical assistance through its own staff, faculty of its member institutions, faculty of other colleges in the state, and through consultants from the private sector. NBDC's consulting services have focused on marketing management and financial management. There also has been substantial demand for marketing research and financial forecasting.

Through its workshops and seminars, NBDC provides the Nebraska business community continuing education in business management. The program for workshops and seminars is managed from the Omaha NBDC office.

In addition to its consultation and training programs, NBDC maintains support services for the benefit of both small business owners and its consultants and trainers. These include:

1. NBDC Report, which is a management brief published monthly and distributed to more than 20,000 business owners and managers in Nebraska;
2. A comprehensive small business library maintained at the NBDC office in Omaha;
3. Legal Aspects of Doing Business in Nebraska, a comprehensive guide for the business owner in Nebraska.
4. The NBDC Microcomputer Training Center teaches the use of personal computers to solve business problems, and served about 1,000 students in 1987.
5. The Nebraska Venture Group, a venture capital club devoted to helping foster an entrepreneurial climate in Nebraska.

The Nebraska Business Development Center has received national recognition for two special programs designed to reach special segments of the community, the Rural Communities Program and Women in Business.

Performance data for NBDC in 1987, show 84 training seminars delivered to 39 communities with about 3,200 participants. There were 338 long-term consulting cases and 985 short-term (more than one hour, less than 12 hours) consulting cases in 1987.

International Center for Telecommunications Management

The International Center for Telecommunications Management was established in 1989 to serve as a comprehensive university-based research, information, and service center contributing to the strategic success of the telecommunications industry, domestic and world-wide. The Center operates as a unit of the College of Business Administration, and is funded by joint participation of the telecommunications industry and the State of Nebraska.

The Center is organized into three interactive functions: (1) Research, (2) Information Services, and (3) Instruction. The Research function extends to administrative and managerial tasks, technology assessment, systems design, and marketing. Information Services provides information to the industry in various media, and presents an annual conference. The Instruction function offers credit and non-credit courses.