



# STATE AND LOCAL POPULATION TRENDS—A Look Ahead

Jerry Deichert, David Drozd  
UNO Center for Public Affairs Research

Nineteenth Annual  
Nebraska State Data Center Summer Conference  
August 14, 2008  
Boys Town Conference Center

# State and Local Population Trends

- **CPAR Reports**
- **Sources of Annual Data for Nebraska**
  - Estimates from the Census Bureau
  - American Community Survey
  - Bureau of Economic Analysis
- **Changes 2000-07**
  - Total population and components of change
  - Age, race, and Hispanic/Latino
- **Projections to 2030**
- **Economic Trends**
  - Per capita income and employment

# CPAR Reports

- **2006 Nebraska Population Report**  
[http://www.unomaha.edu/~cpar/documents/nebpopulation\\_06.pdf](http://www.unomaha.edu/~cpar/documents/nebpopulation_06.pdf)
- **2007 Nebraska Population Report**  
**(coming soon, will include revisions from methodology change)**
- **Nebraska Birth Report (newly released)**  
<http://www.unomaha.edu/cpar/documents/BirthReport.pdf>

# Estimates from the Census Bureau

- The Population Estimates Program releases population and housing units estimates throughout the year.
- In general, the most current estimates released in a given year refer to the population on July 1 of the previous year.
- Data are provided for each year since the most recent Census.
- <http://www.census.gov/popest/estimates.php>



# Estimates from the Census Bureau

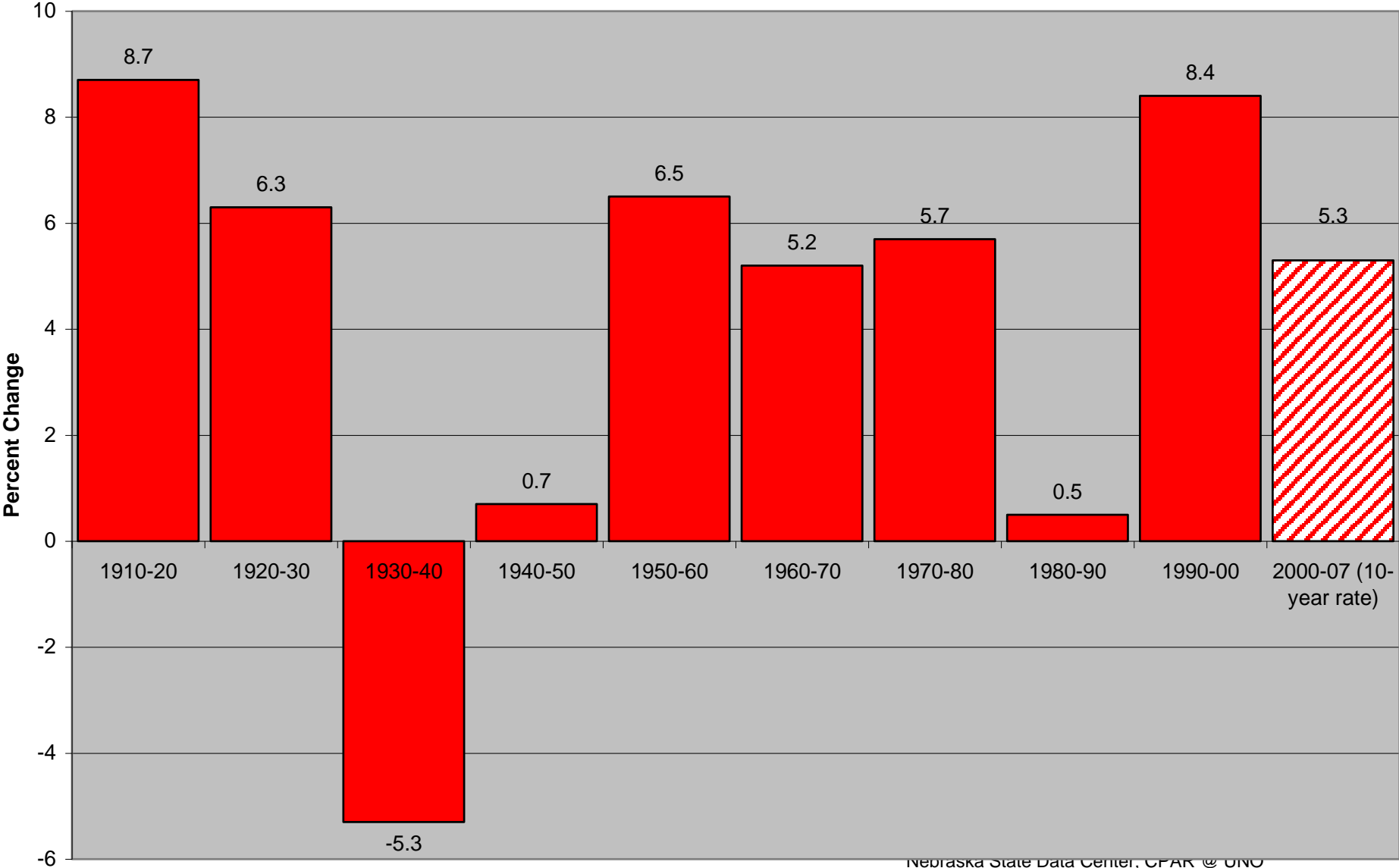
- State and county population and demographic components of population change
- State and county population by age, sex, race, and Hispanic origin
- State and county housing units
- Place and county subdivision population
- Metropolitan and micropolitan statistical area population and estimated components of population change



# State population (1990-2000)

- State grew at 8.4 percent
- Rate began to slow in 1997
- 1990's population growth largest since 1910-20

# Nebraska Population Change by Decade: 1910 to 2007



Nebraska State Data Center, CPAR @ UNO

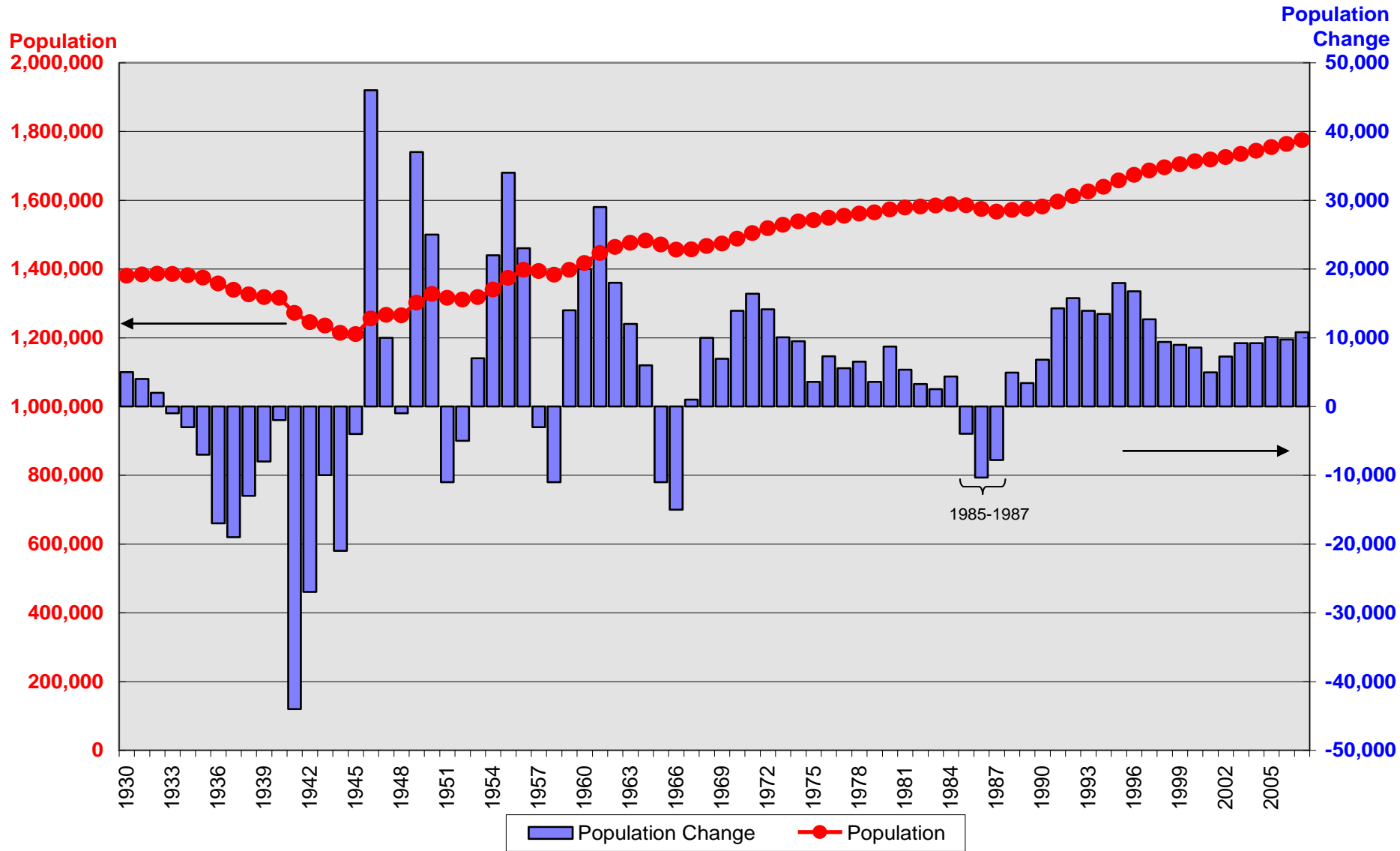
Source: US Census Bureau, Decennial Censuses and Annual Estimates

# State Population (2000-2007)

- State grew at a 3.7 percent rate, adding 63,306 persons between April 1, 2000 and July 1, 2007 (about 5.3 percent decade rate)
- Growth rate ranked 33th in the US
- Added 10,806 persons (0.6 percent) between 2006 and 2007
- The 2006-07 growth is the largest in percentage and number since 1996-97



# Nebraska Population and Population Change, 1930-2007



Sources: Nebraska Health and Human Services System, Vital Statistics; and US Census Bureau, State Data Center, CPAR @ UNO

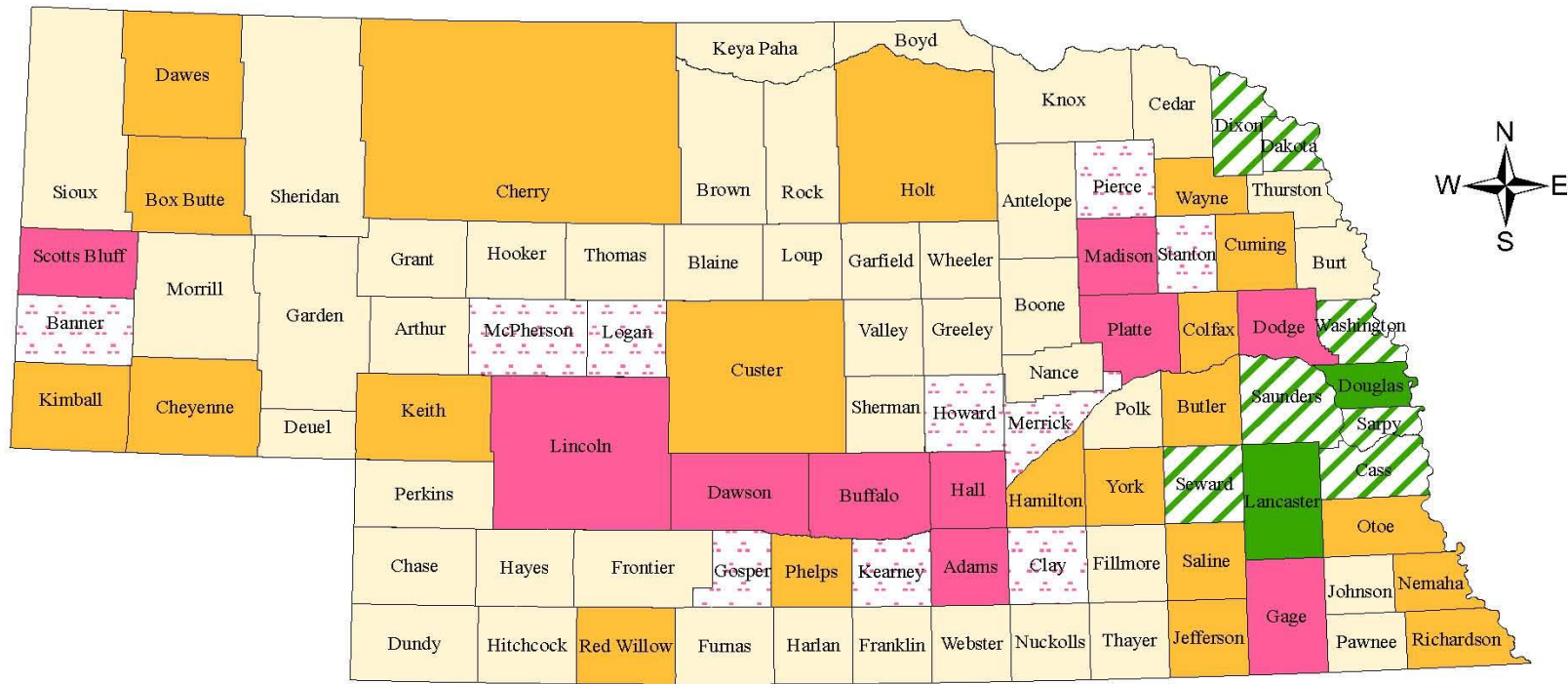
# County population (1990-2000)

- 40 counties added population or were unchanged
- Nebraska's population is becoming more and more concentrated in its most populous counties
- Both metropolitan and nonmetropolitan counties added population
- Counties with no city above 2,500 continued to decline but at a slower rate






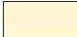
# County Population (2000-2007)

- Only 20 counties added population 2000 to 2007
  - Sarpy, Lancaster, Douglas, Buffalo, Washington, Adams, and Cass were 5.0 percent or above
- Metropolitan counties added population, but nonmetropolitan counties lost population
  - Metropolitan 9.1%
  - Nonmetropolitan -3.0%
    - Micropolitan 1.1%
    - Largest city 2,500 to 9,999 persons -5.4%
    - Largest city under 2,500 persons -9.8%
- Douglas, Lancaster, and Sarpy accounted for 51.8 percent of Nebraska's population in 2007

# Map 1: Nebraska Counties Classified by Modified Urban Influence Code



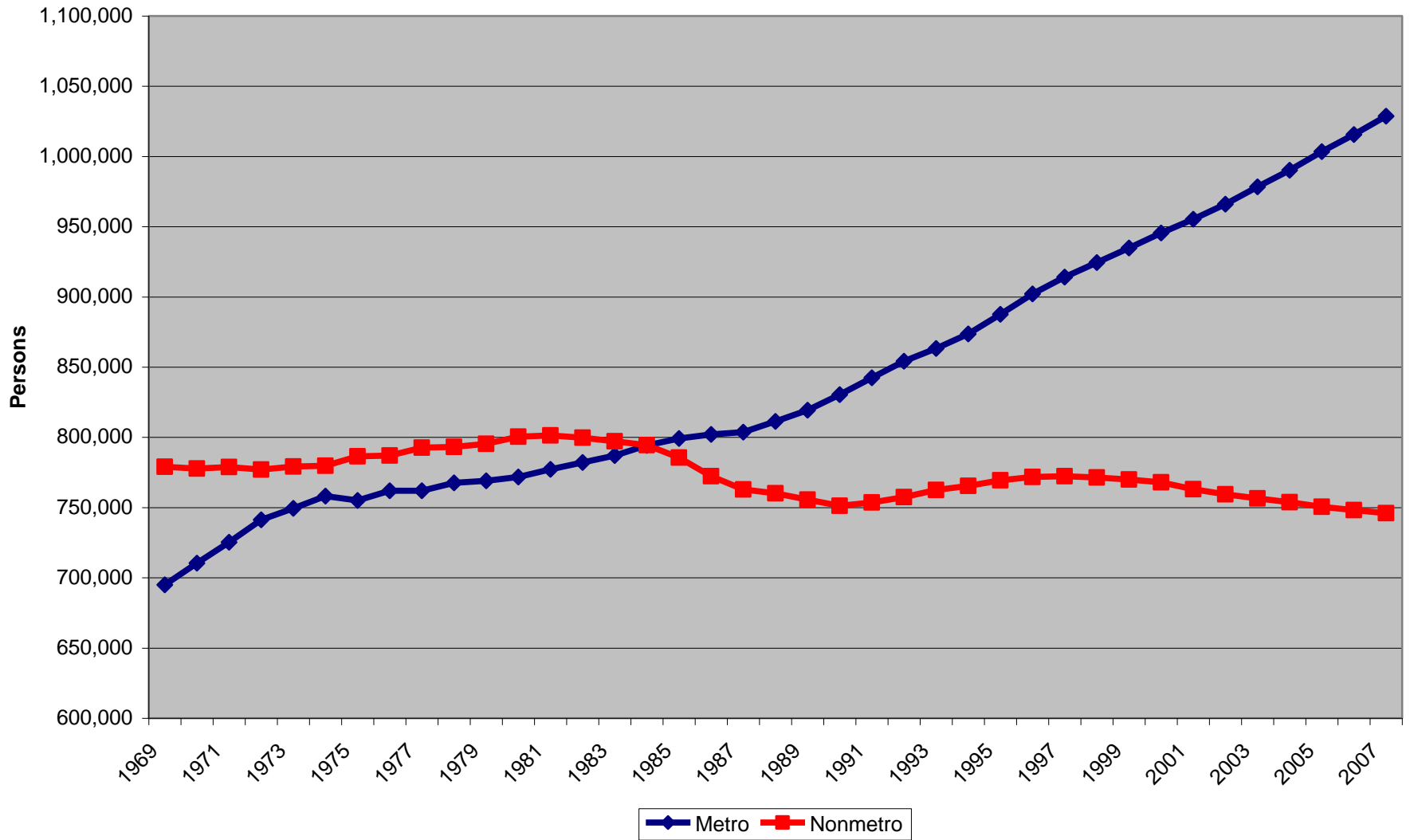
## Modified Urban Influence Classification

	Code 1: Metropolitan core county (small metro--fewer than 1 million residents)	(2)
	Code 2: Metropolitan outlying county	(7)
	Code 3: Micropolitan core county (contains a city of at least 10,000 residents)	(10)
	Code 4: Micropolitan outlying county	(10)
	Code 5: Non-Metro/Micro county with largest town of 2,500-9,999 residents	(21)
	Code 6: Non-Metro/Micro county with no towns above 2,500 residents	(43)

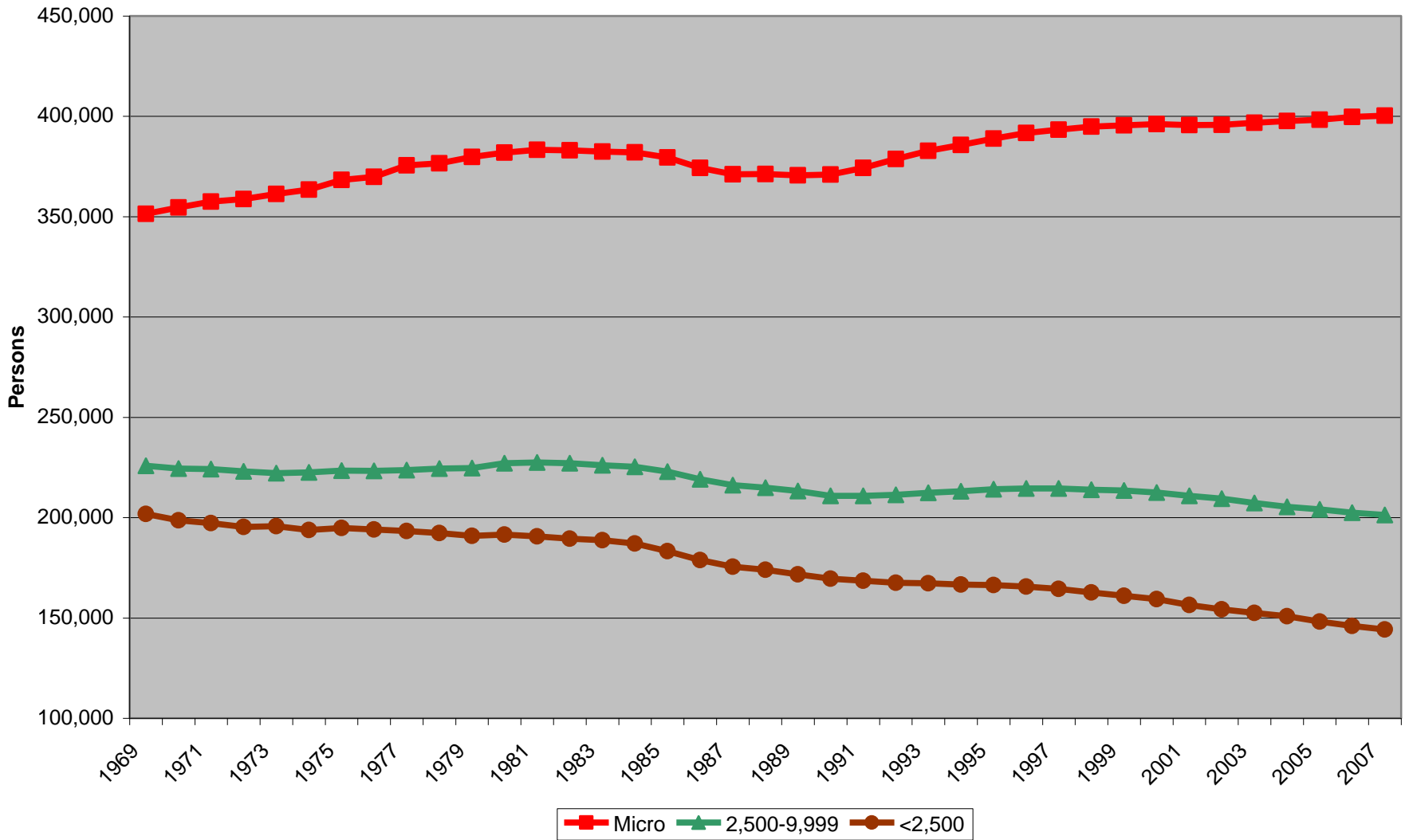
Source: U.S. Census Bureau, USDA Economic Research Service; Compiled by: Center for Public Affairs Research (CPAR), University of Nebraska at Omaha

Prepared by: David Drozd, CPAR - April 12, 2006

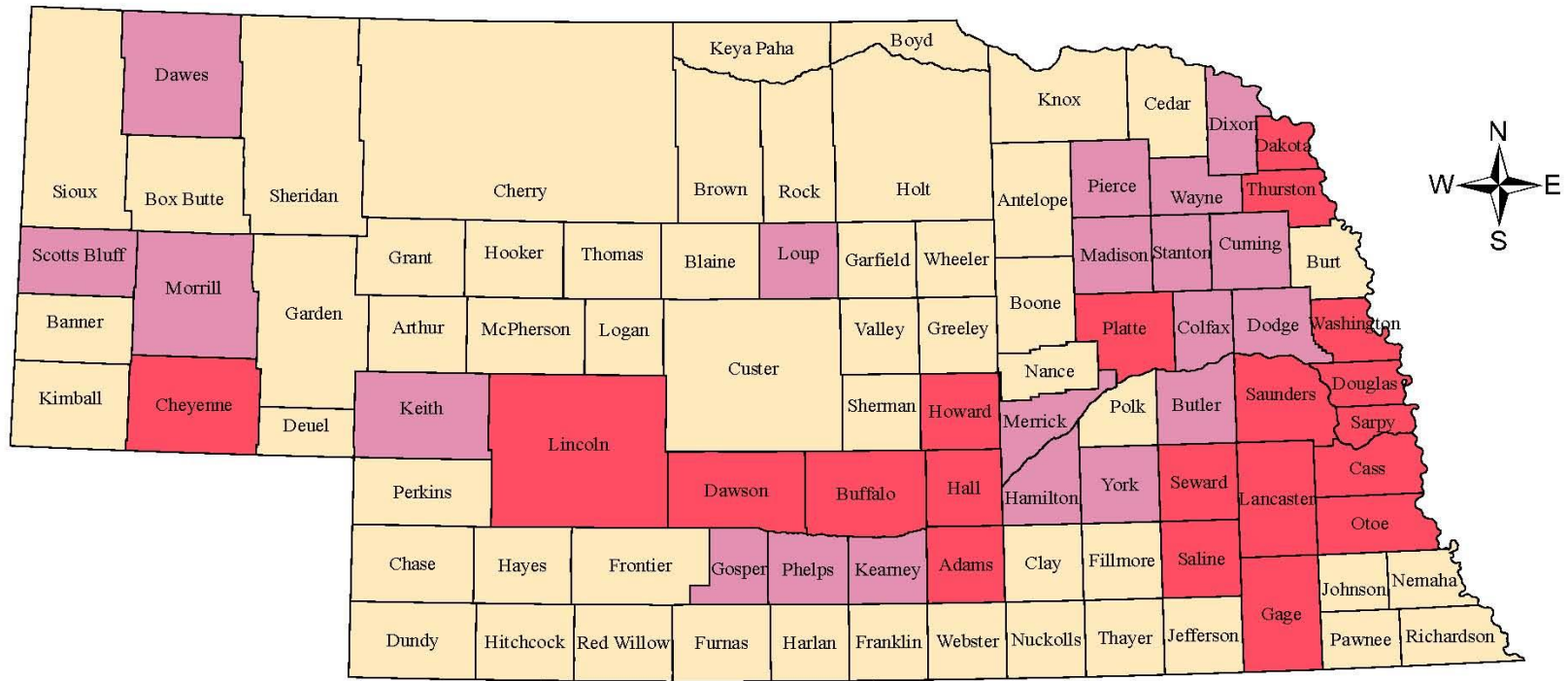
# Population of Nebraska Counties By Metropolitan and Nonmetropolitan Status: 1969-2007 (2003 Definitions)



## Population of Nebraska Counties By Micropolitan Status and Size of Largest City 2,500-9,999 and Under 2,500: 1969-2007 (2003 Definitions)



# Map 2: Population Change in Nebraska Counties: 1990-2000 and 2000-2007



## Population Change between 1990-2000 and 2000-2007

- Increased 1990-2000 and Increased 2000-2007 (20)
- Increased 1990-2000 and Decreased 2000-2007 (20)
- Decreased 1990-2000 and Decreased 2000-2007 (53)

Sources: 1990 and 2000 Decennial Censuses; Cumulative Estimates of Population Change - released March 20, 2008, U.S. Census Bureau

Prepared by: David Drozd, Center for Public Affairs Research, University of Nebraska at Omaha - March 20, 2008

# Natural change (1990-2000)

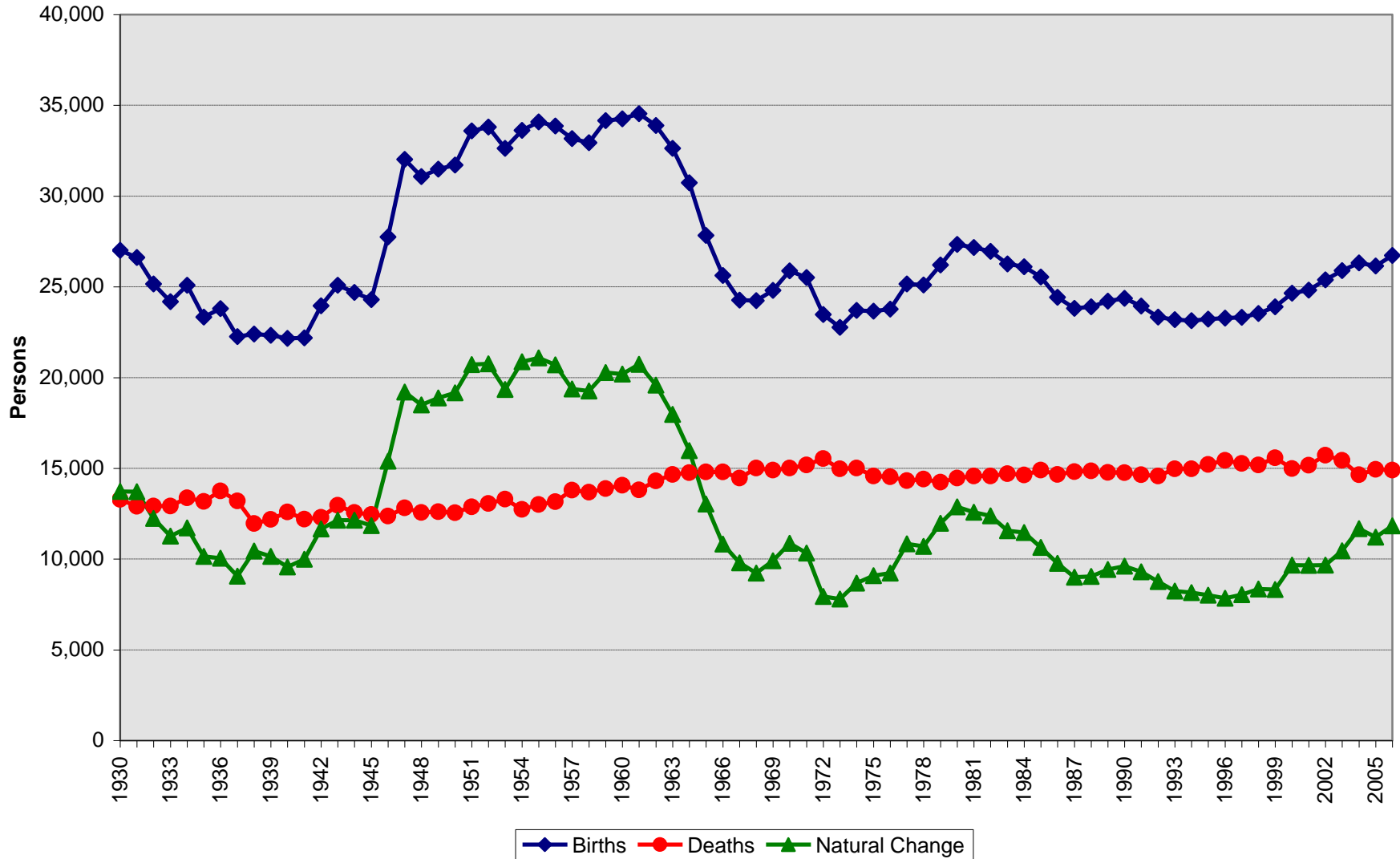
- Births leveled off and then increased slightly
- Birth rates by age of mother increased slightly from 1990
- Deaths increased slightly
- Natural change declined during most of the decade but picked up at the end of the decade
- 41 counties had more deaths than births



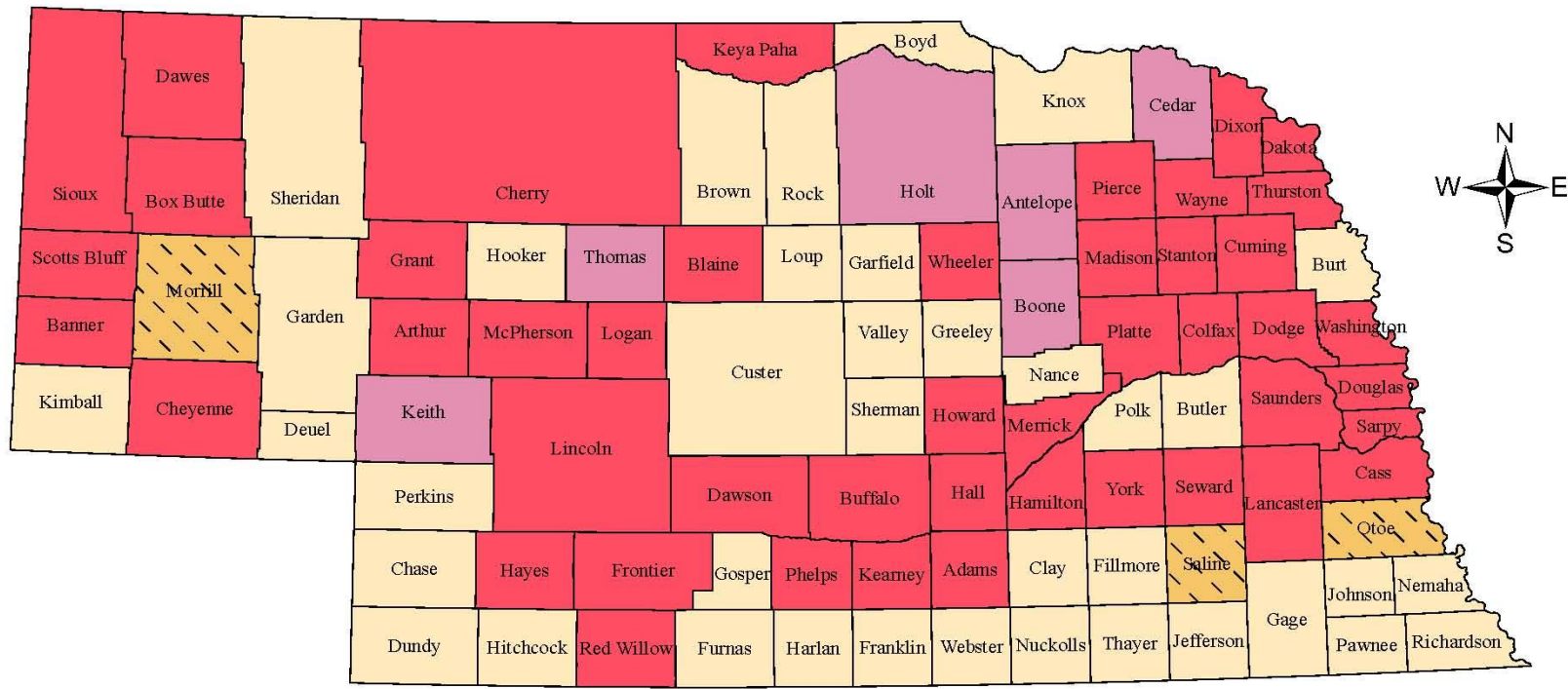
# Natural Change (2000-2007)

- Births in 2006 highest since 1982
  - 26,722 in 2006 (latest official number)
  - Recent peak was 27,335 in 1980
- Natural increase higher than any time during the 1990s
- 49 counties had more births than deaths, and 44 had more deaths than births

# Nebraska Births and Deaths, 1930-2006



# Map 3: Natural Change in Nebraska Counties: 1990-2000 and 2000-2007



## Natural Change between 1990-2000 and 2000-2007

- Increased 1990-2000 and Increased 2000-2007 (46)
- Increased 1990-2000 and Decreased 2000-2007 (6)
- Decreased 1990-2000 and Increased 2000-2007 (3)
- Decreased 1990-2000 and Decreased 2000-2007 (38)

Sources: 1990 and 2000 Decennial Censuses; Cumulative Estimates of Population Change - released March 20, 2008, U.S. Census Bureau

Prepared by: David Drozd, Center for Public Affairs Research, University of Nebraska at Omaha - March 20, 2008



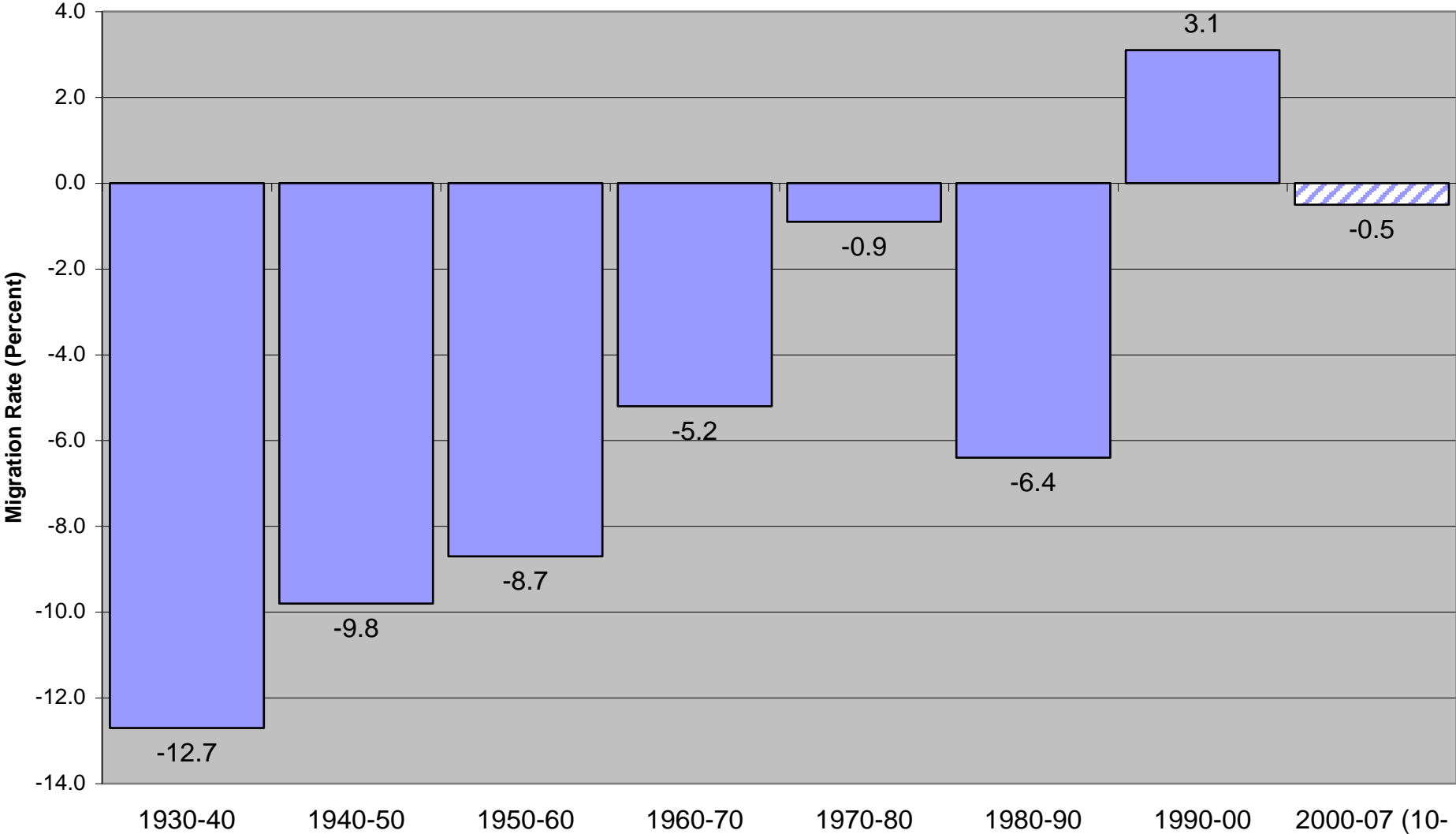
# Net migration (1990-2000)

- Added about 48,000 persons during the decade (3.1 percent)
- Decade with net immigration for the first time in 6 decades
- International greater than domestic
- 42 counties had net immigration or no net outmigration

# Net Migration (2000-2007)

- In 2007, lost 9,314 persons since 2000 for a rate of -0.5 percent
- International still experiencing inmigration during each year (27,398 between 2000 and 2007)
- Domestic has outmigration for each year (-36,717 between 2000 and 2007)
- Only 10 counties had net inmigration
  - Sarpy, Washington, Lancaster, and Cass were above 2.0 percent

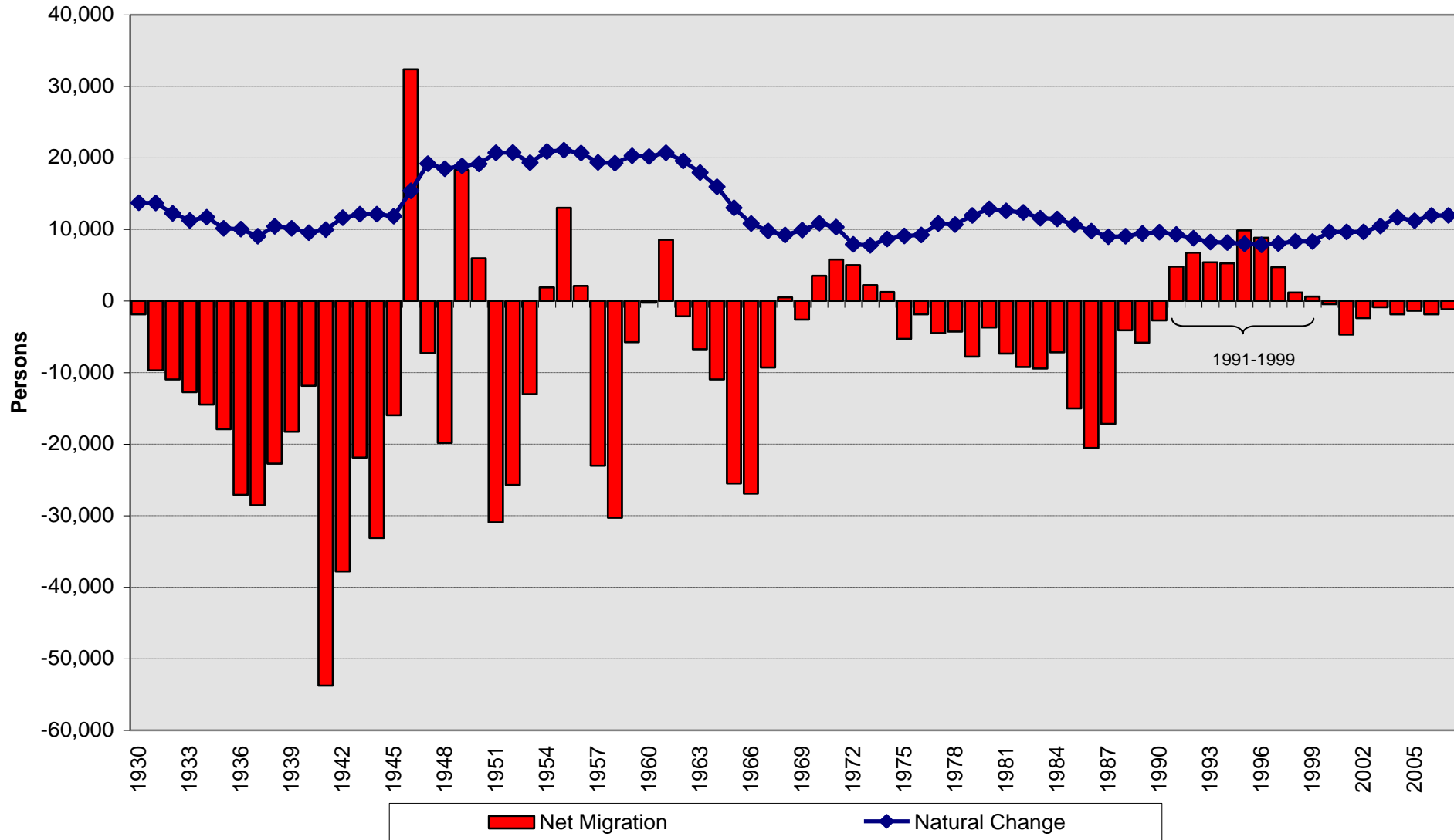
# Nebraska Net Migration by Decade: 1930 to 2007



Nebraska State Data Center; CPAR @ UNOyear rate)

Sources: US Census Bureau, Decennial Censuses and Annual Estimates; and Nebraska Health and Human Services System, Vital Statistics

# Nebraska Components of Population Change, 1930-2007



Sources: US Census Bureau, Decennial Censuses and Annual Estimates; and Nebraska Health and Human Services Center, GIS@UNL, Vital Statistics

# Cities/Towns (2000-2007)

- Slightly less than 80.0 percent of Nebraska's population lives in cities or towns
  - Population in Nebraska cities and towns grew 5.2 percent
  - Population outside of cities and towns lost 1.4 percent
- Median size town is 320 persons—Brule, Hadar, Maxwell, and Phillips
- Mean size town is 2,624--Valentine



# Cities/Towns (2000-2007)

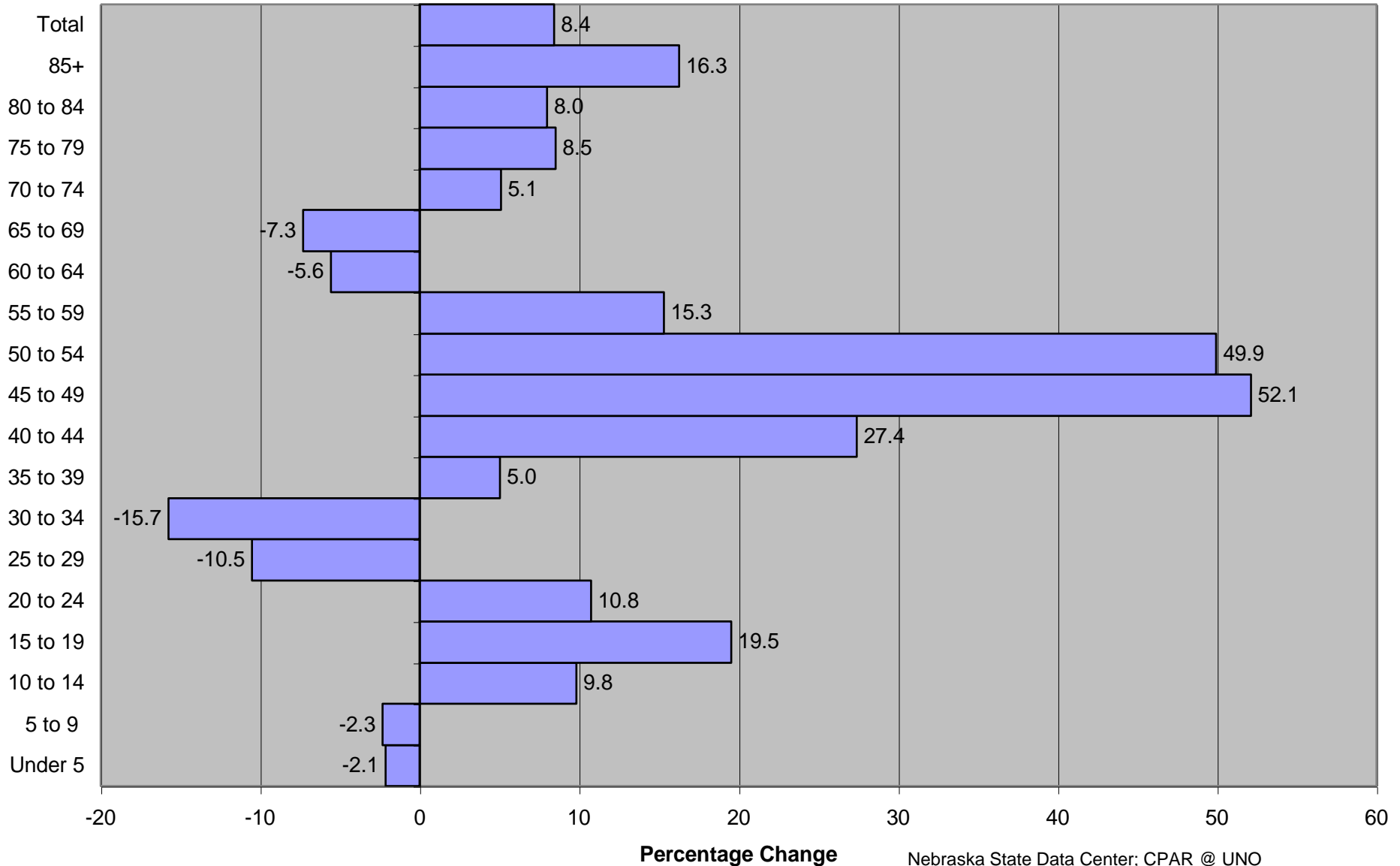
## ■ Highest percentage growth

<u>City/Town</u>	<u>County</u>	<u>Percentage Change</u>
□ Gretna	Sarpy	168.9
□ Waterloo	Douglas	79.5
□ La Vista	Sarpy	40.3
□ Hickman	Lancaster	37.6
□ Papillion	Sarpy	35.8
□ Firth	Lancaster	25.0
□ Bennet	Lancaster	24.4
□ Waverly	Lancaster	24.0
□ Boys Town	Douglas	17.2
□ Winnebago	Thurston	19.4

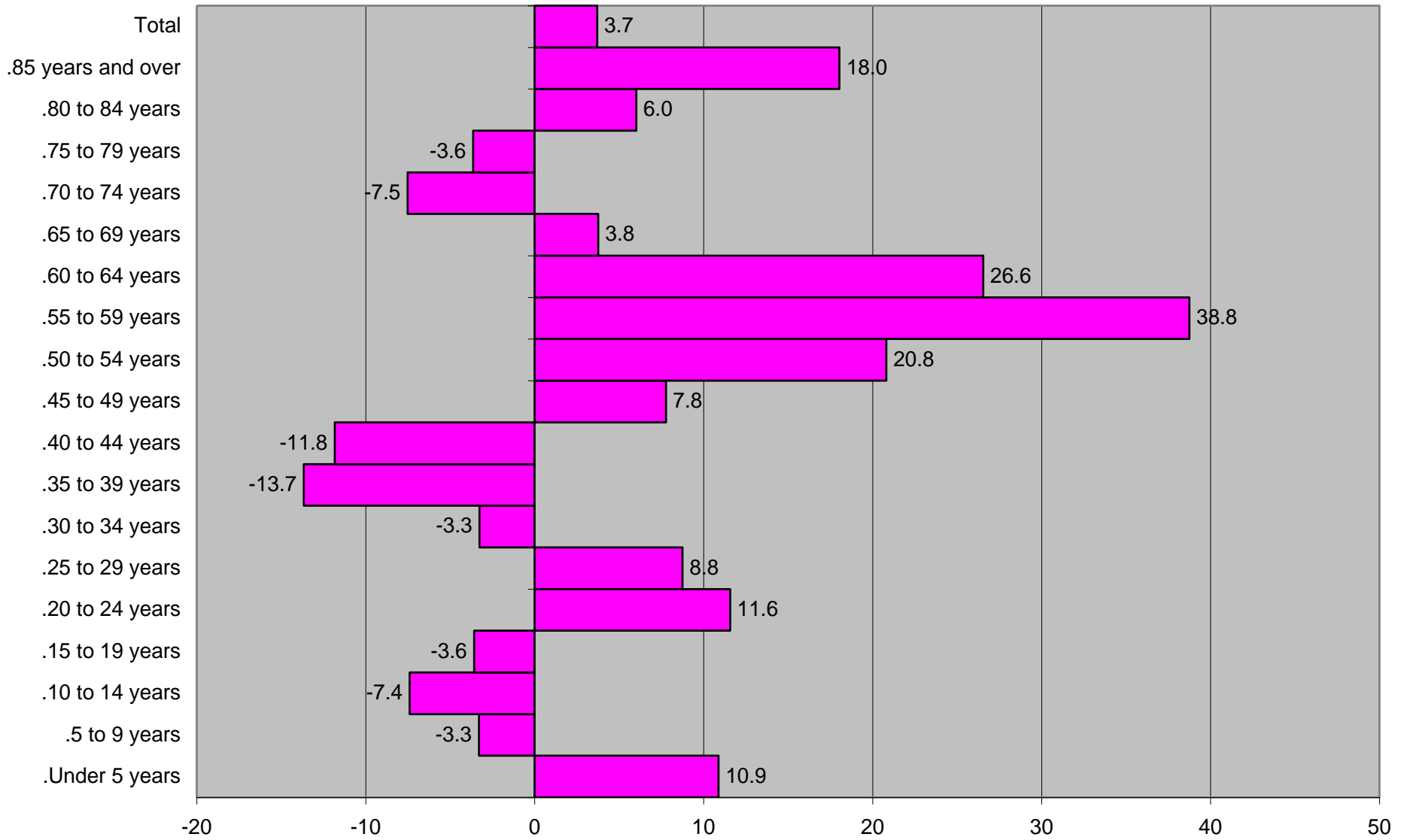
# Population Change by Size of City/Town: 2000 to 2007

■ Size class	Percent Change
Omaha/Elkhorn	9.3
Lincoln	10.3
10,000 to 50,000	6.9
5,000 to 9,999	-1.9
2,500 to 4,999	-5.7
1,000 to 2,499	0.2 (-3.9 without Gretna)
500 to 999	-5.6
250 to 499	-4.4
100 to 249	-6.4
less than 100	-7.1

## Percentage Change in Nebraska Population By 5-Year Age Group, 1990-00

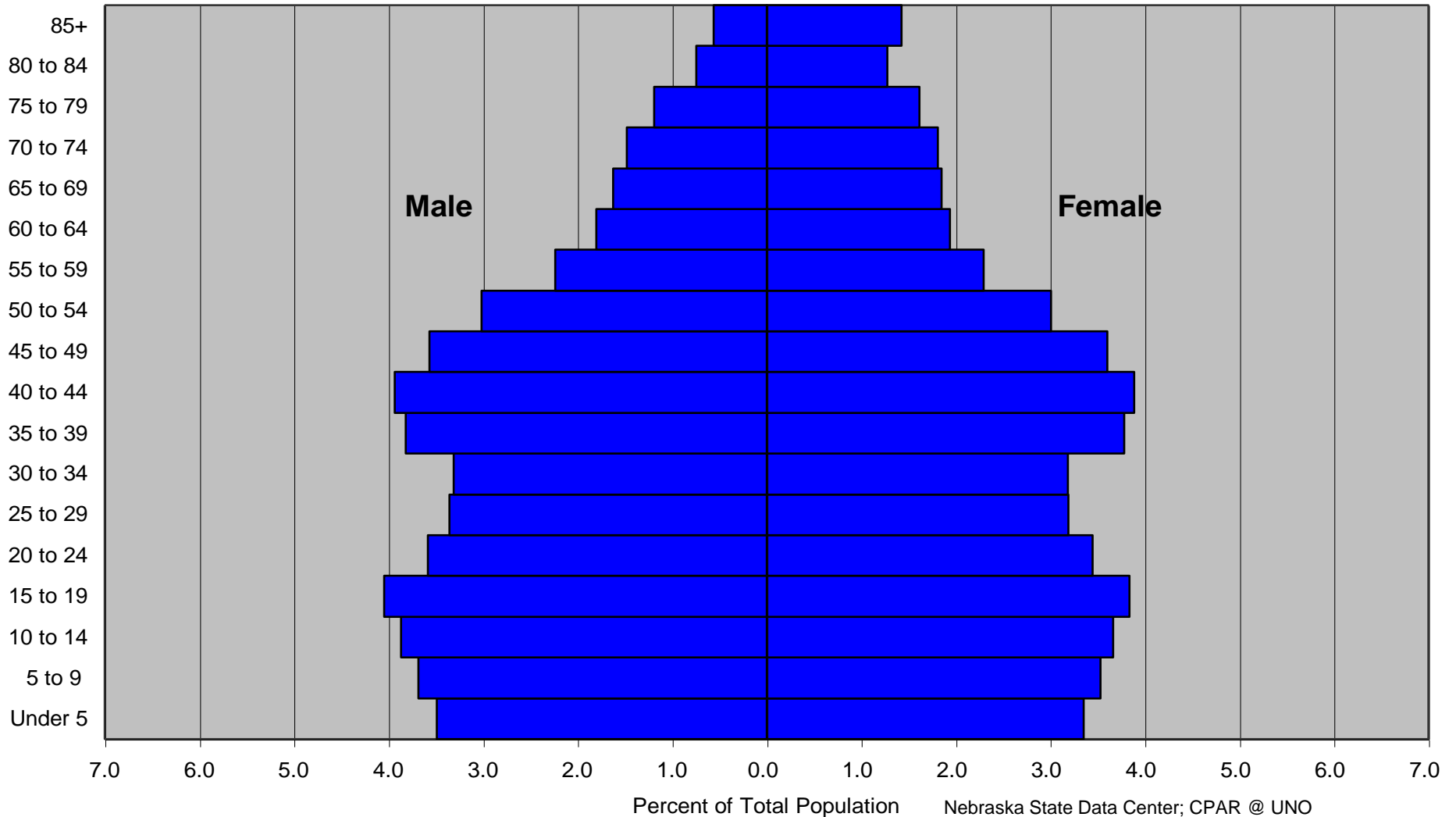


## Percentage Change in Nebraska Population by Five-Year Age Group:2000-2007



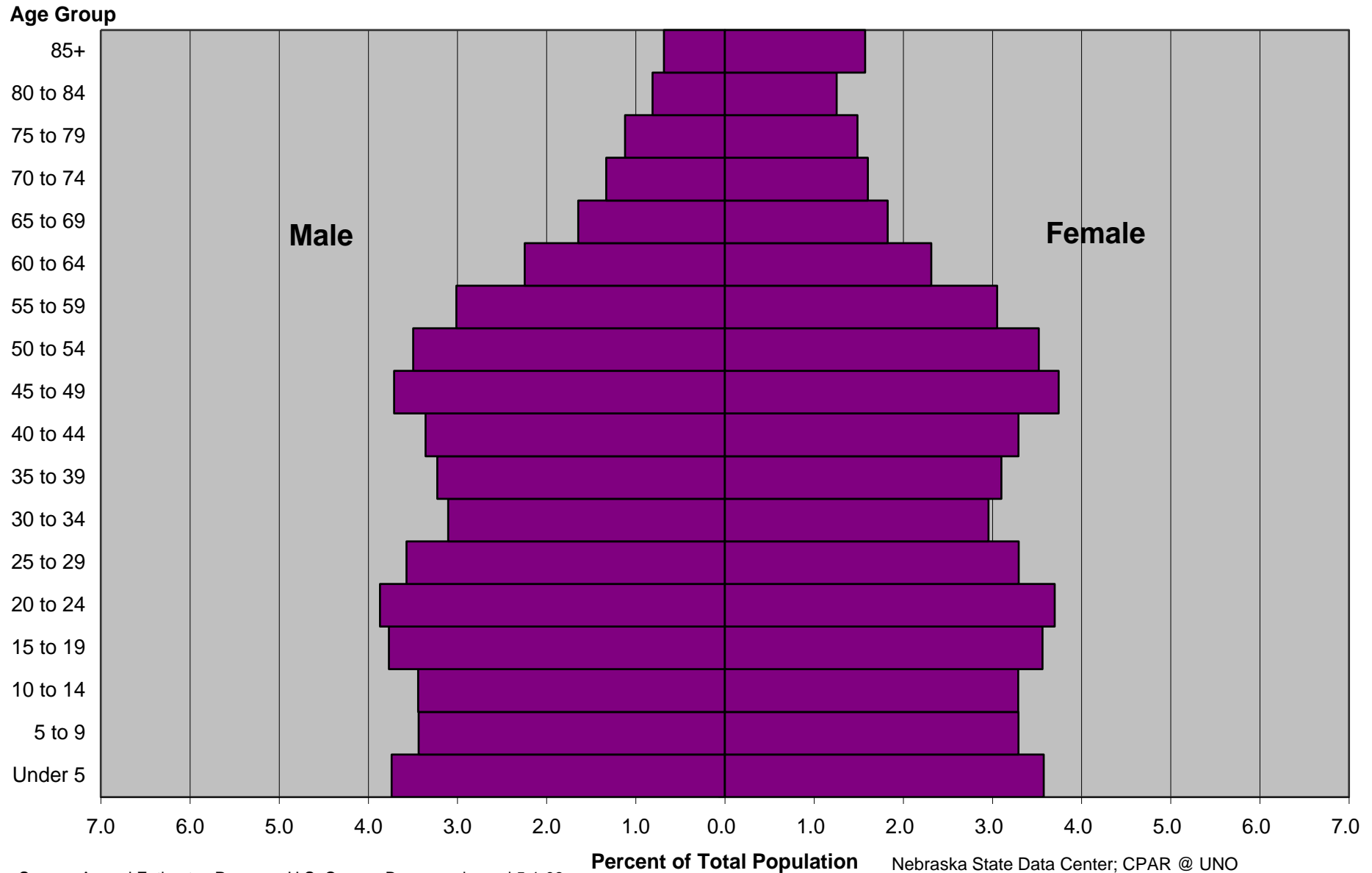
Percentage Change Nebraska State Data Center; CPAR @ UNO

## 2000 Nebraska Population by Sex and Five-Year Age Group: Total



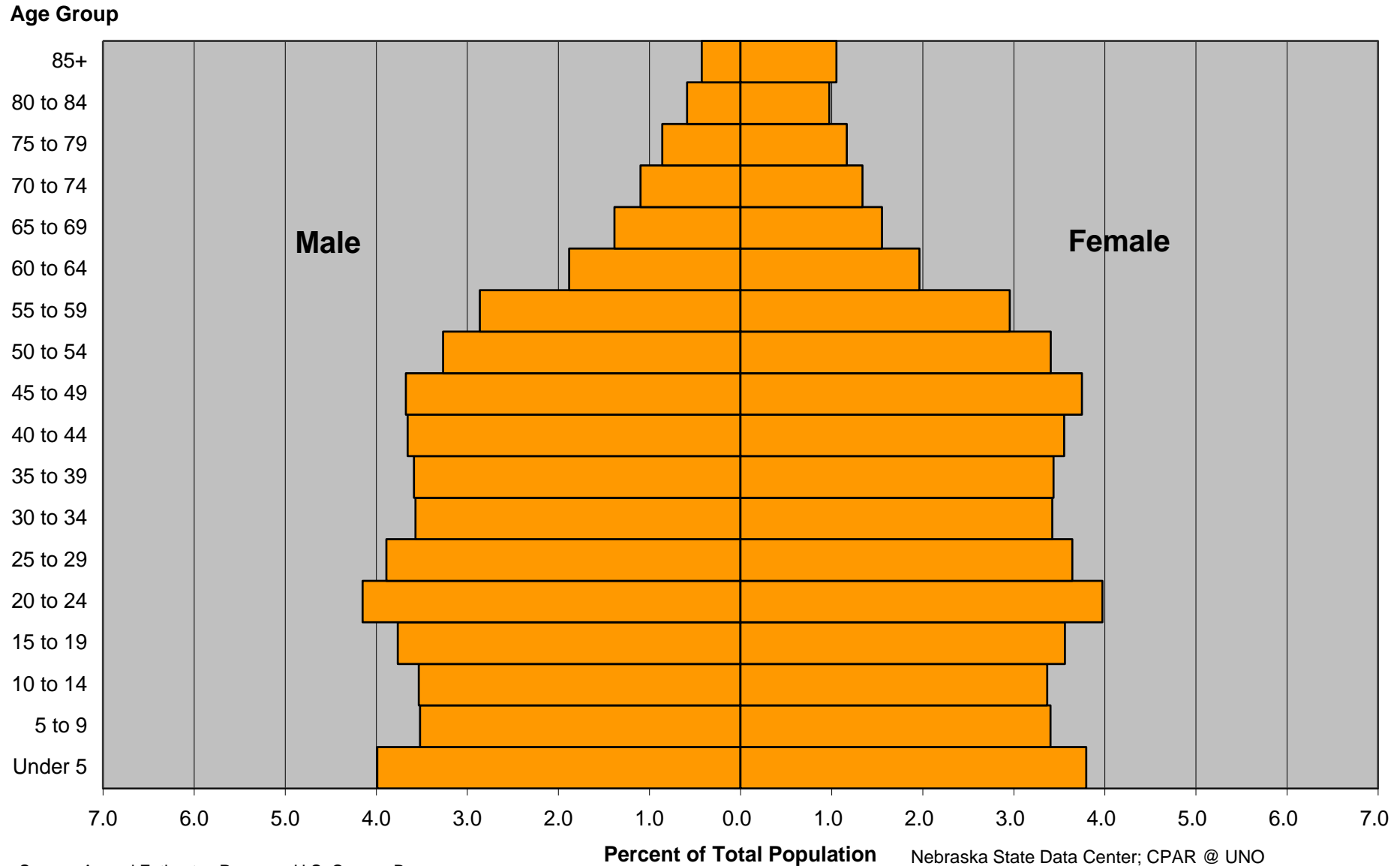
Source: US Census Bureau, 2000 Census (SF1)

## 2007 Nebraska Population by Sex and Five-Year Age Group

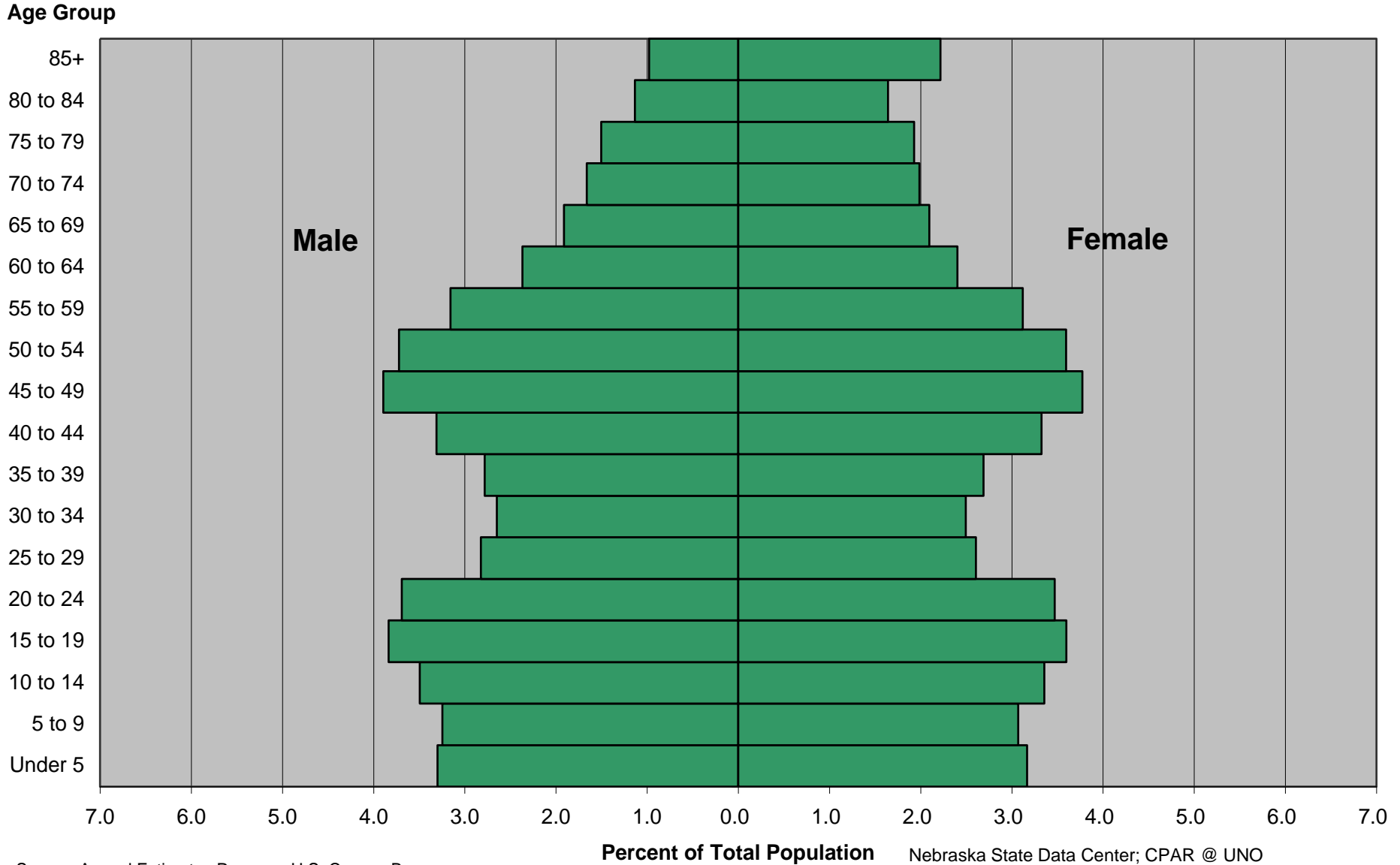


Source: Annual Estimates Program, U.S. Census Bureau, released 5-1-08

## 2006 Nebraska Population by Sex and Five-Year Age Group: Metropolitan Counties



## 2006 Nebraska Population by Sex and Five-Year Age Group: Nonmetropolitan Counties





# Race and Hispanic Origin

## ■ Change 1990-2000

- Total (8.4 percent)
- White (3.6 or 5.0 percent)
- African-American or Black (19.4 or 32.1 percent)
- American Indian and Alaska Native (20.0 or 78.9 percent)
- Asian and Pacific Islander (83.3 or 129.8 percent)
- Hispanic/Latino Origin (155.4 percent)
- White non-Hispanic (2.4 percent)
- Minority (83.3 percent)

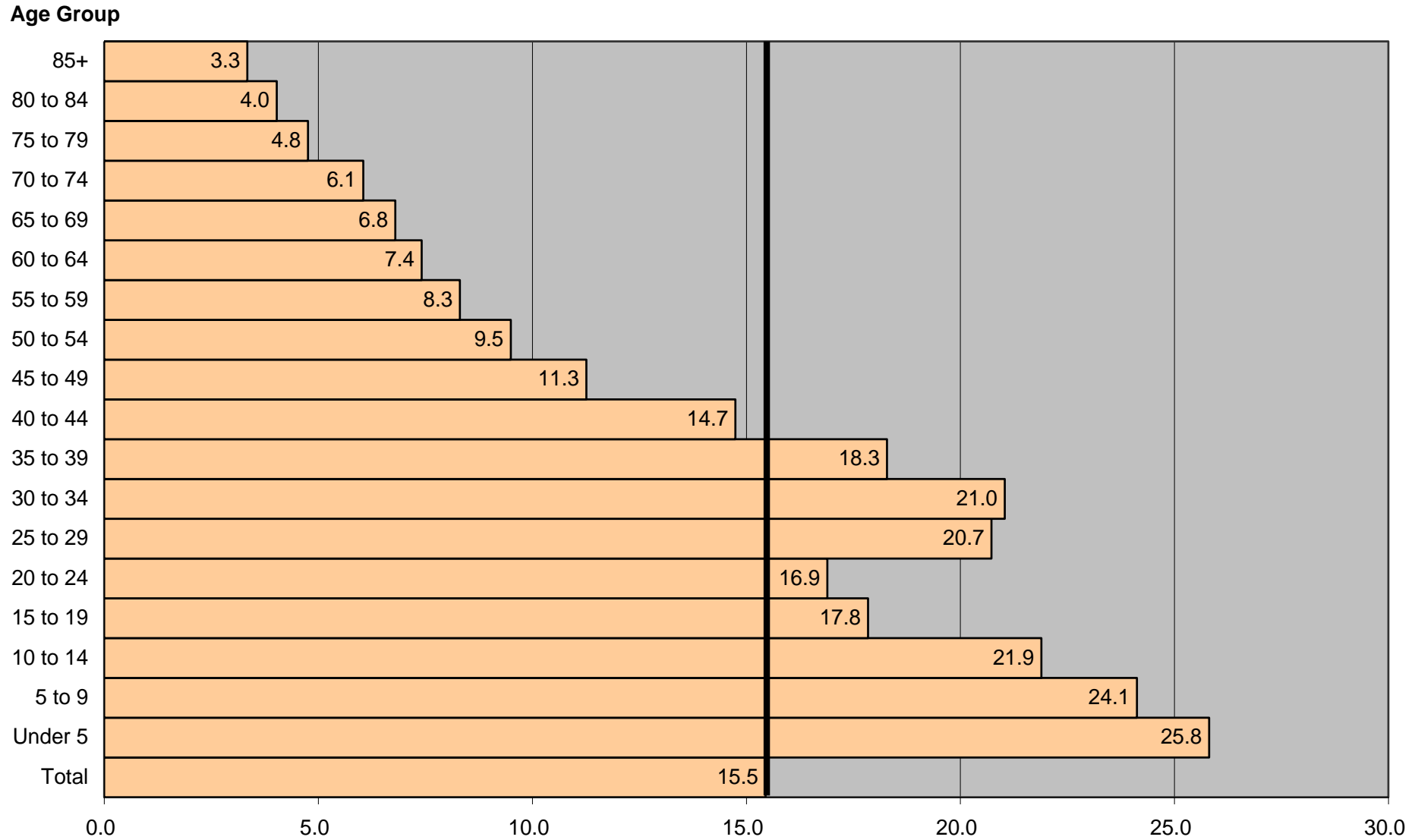
# Race and Hispanic Origin

- Change 2000-2007
  - Total (3.7 percent)
  - White alone (2.5 percent)
  - African-American or Black alone (12.2 percent)
  - American Indian and Alaska Native alone (12.4 percent)
  - Asian alone (34.6 percent)
  - Nat. Hawaiian Pac. Islander alone (27.9 percent)
  - Hispanic/Latino Origin (41.7 percent)
  - White non-Hispanic (0.2 percent)
  - Minority (28.0 percent)

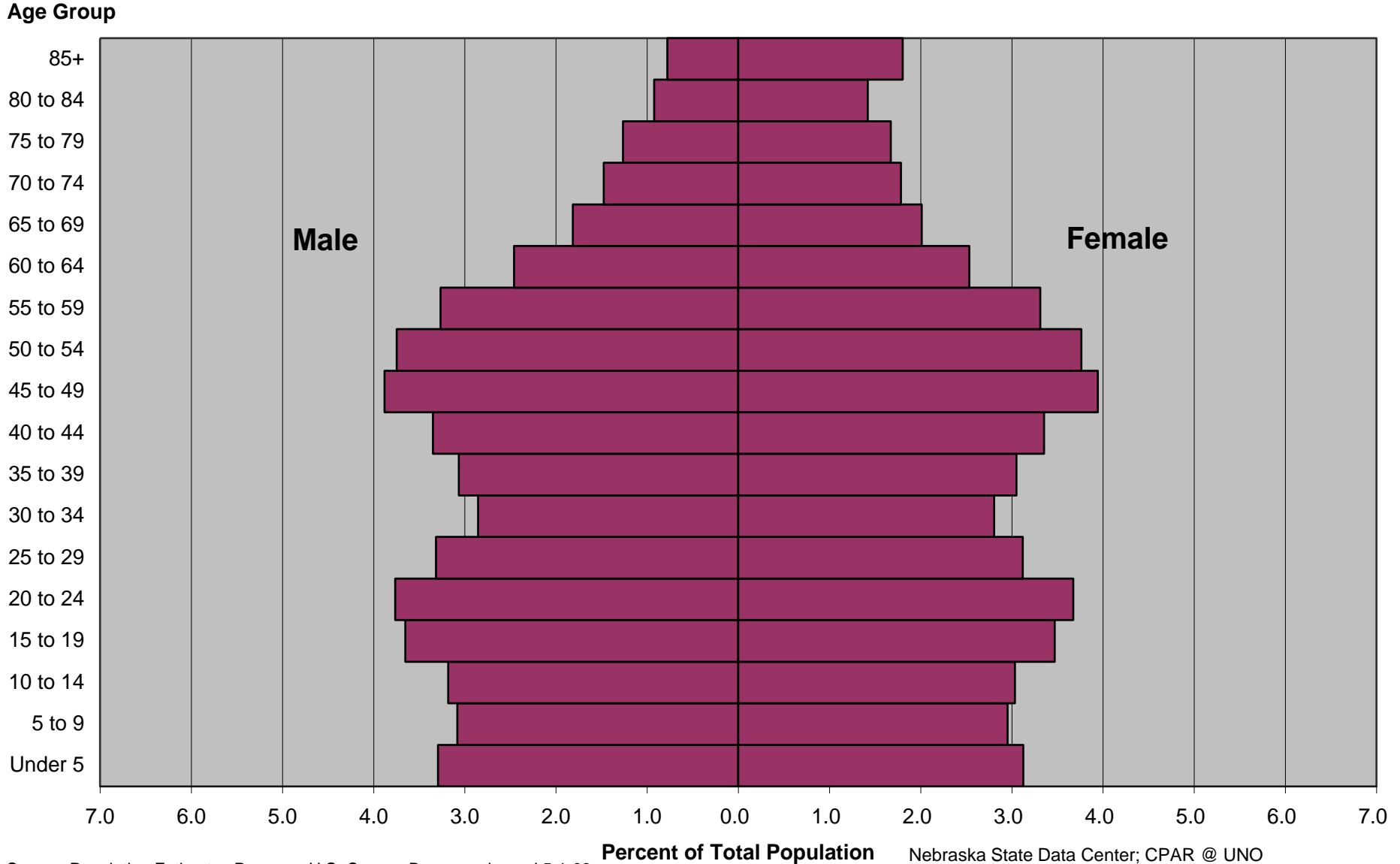
# Race and Hispanic Origin

- In 2007, Minority population was 15.5 percent of total
- Up from 12.7 in 2000 and 7.4 percent in 1990
- Hispanic/Latino Origin became largest minority group in 2000
- Minority population is much younger
  - Relatively more under 40
  - Relatively fewer 40+

## 2007 Nebraska Population by Sex and Five-Year Age Group: Non-White or Hispanic/Latino (Minorities) as a Percent of the State Total

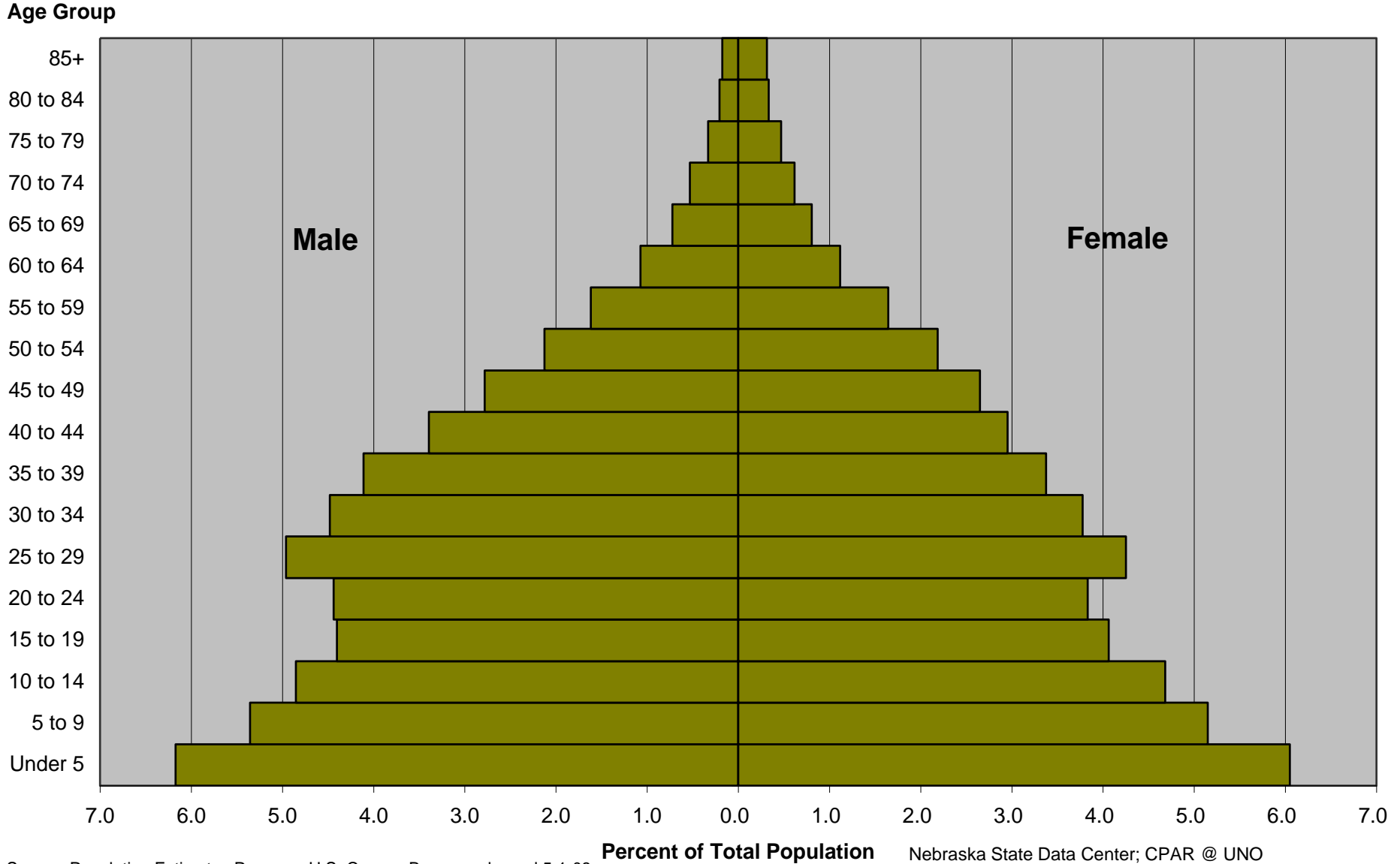


## 2007 Nebraska Population by Sex and Five-Year Age Group: White Alone, not Hispanic/Latino (Majority Population)



Source: Population Estimates Program, U.S. Census Bureau, released 5-1-08

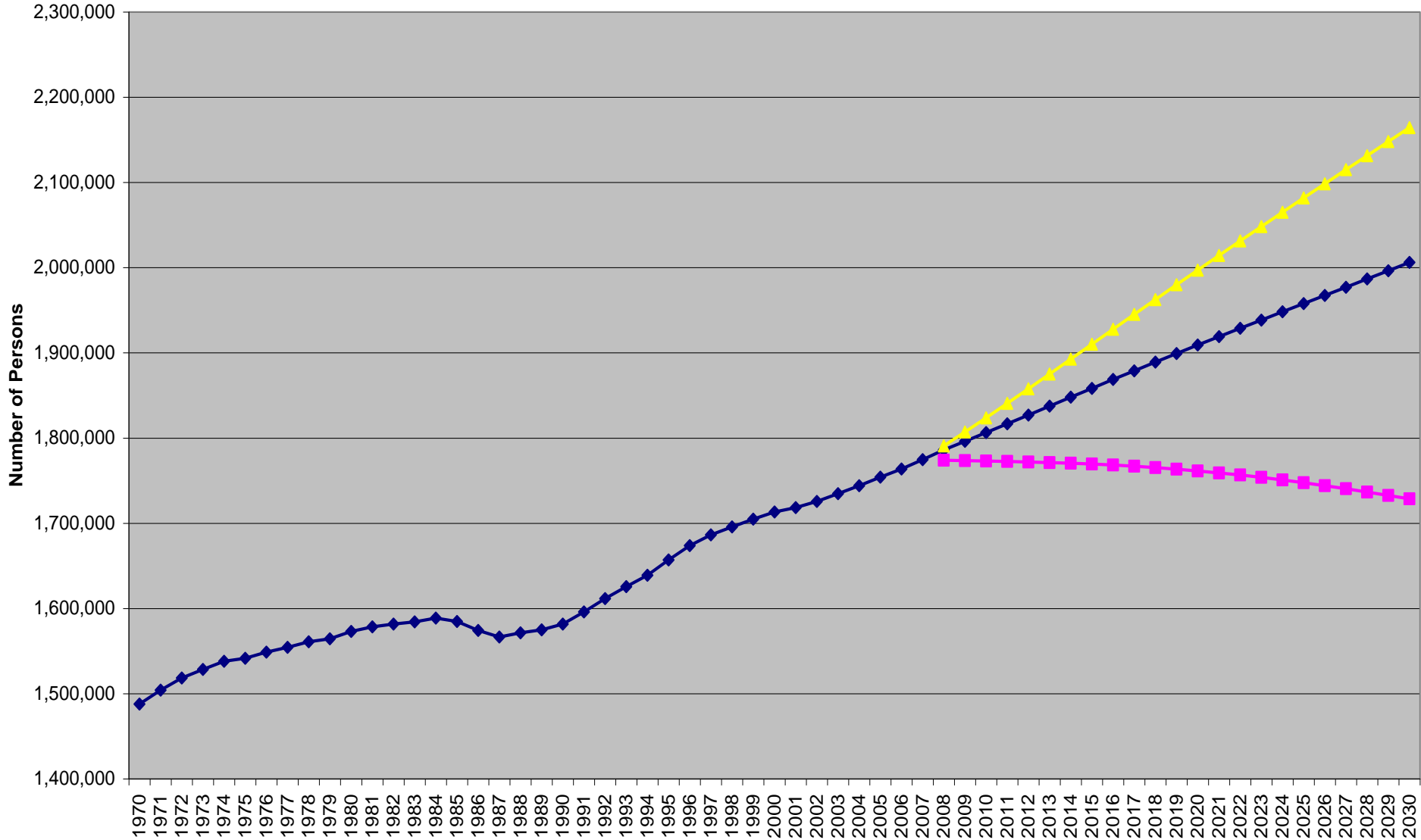
## 2007 Nebraska Population by Sex and Five-Year Age Group: Non-White or Hispanic/Latino (Minority Population)



# Projections 2000-2030

- Assumes three migration series
  - Low series—migration rates of the 1980s
  - High series—migration rates of the 1990s
  - Trend series—trends of the 2000s continuing
    - Birth rates
    - Survival rates
    - Migration rates

# Nebraska Population and Population Projections: 1970 to 2030

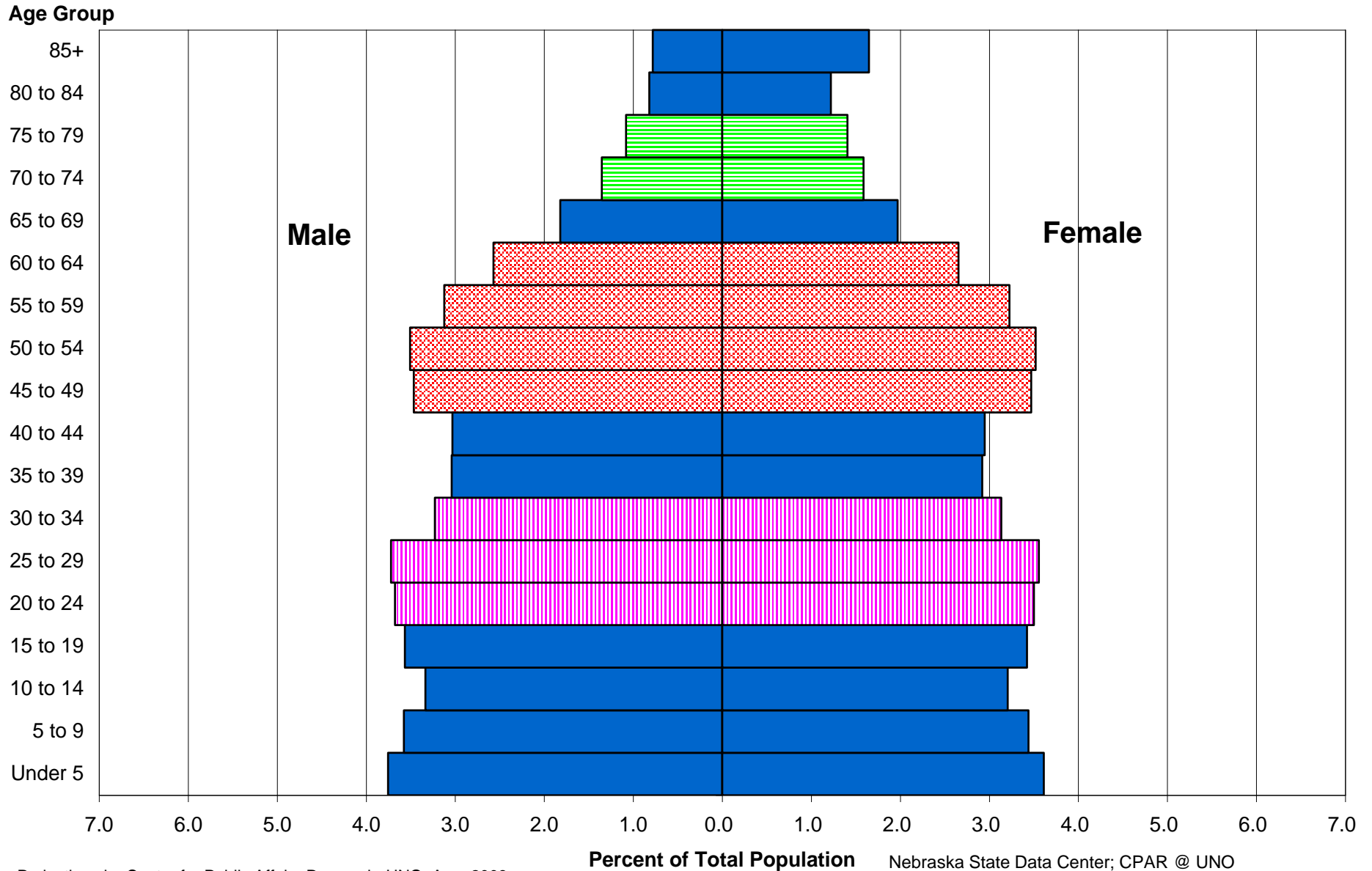


Nebraska State Data Center; CPAR @ UNO

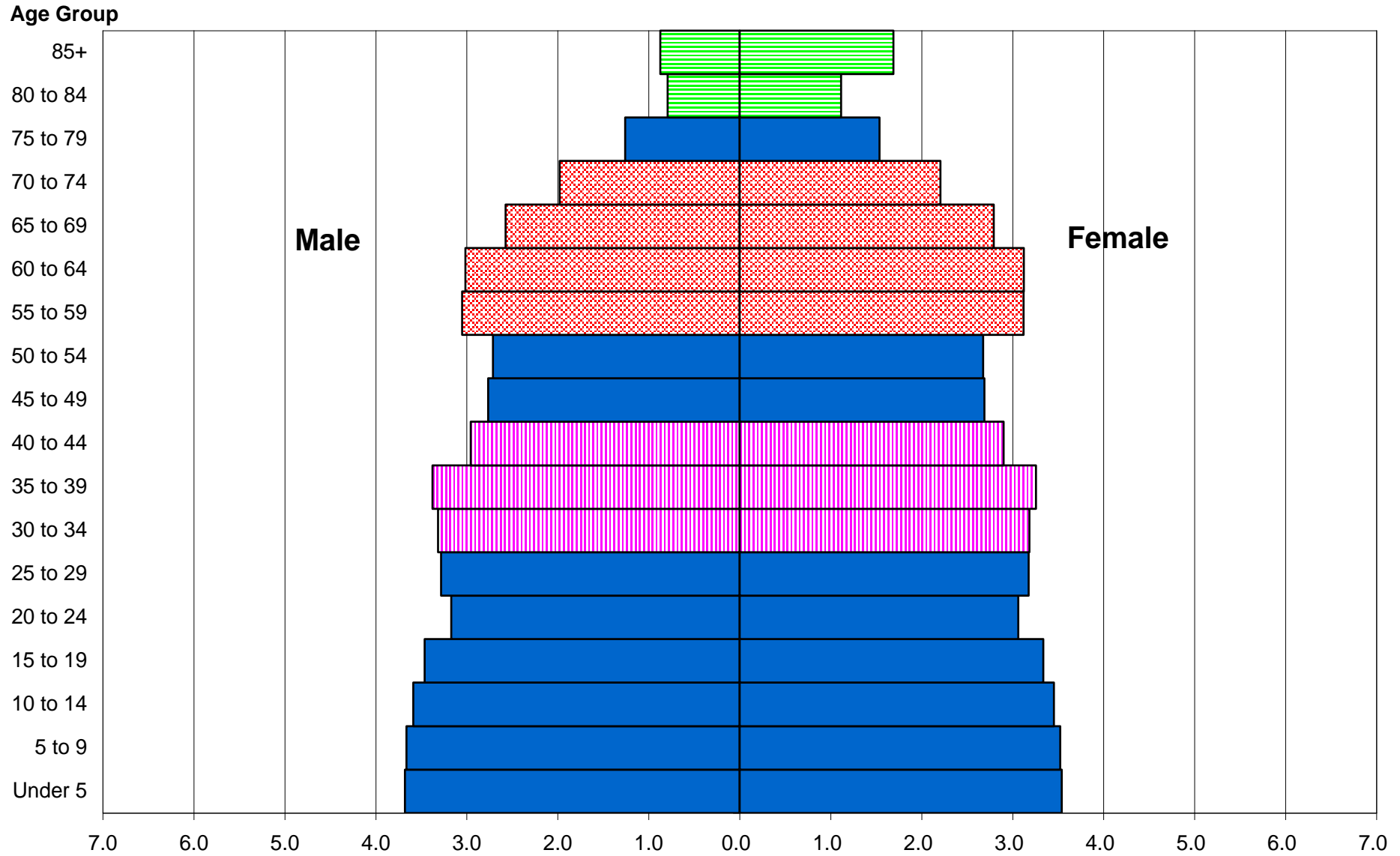
◆ Trend Series    ■ Low Series    ▲ High Series



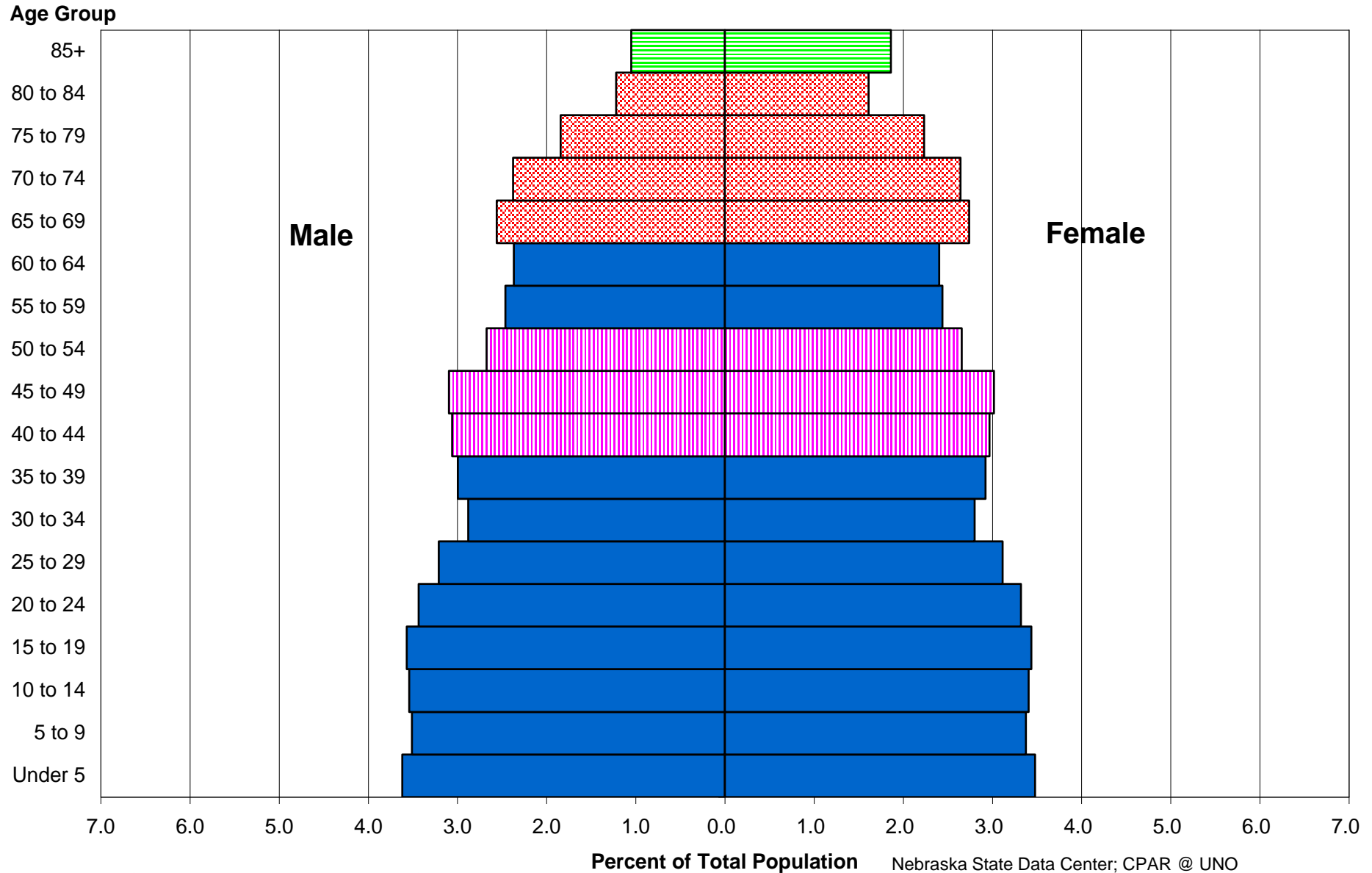
# 2010 Nebraska Population by Sex and Five-Year Age Group



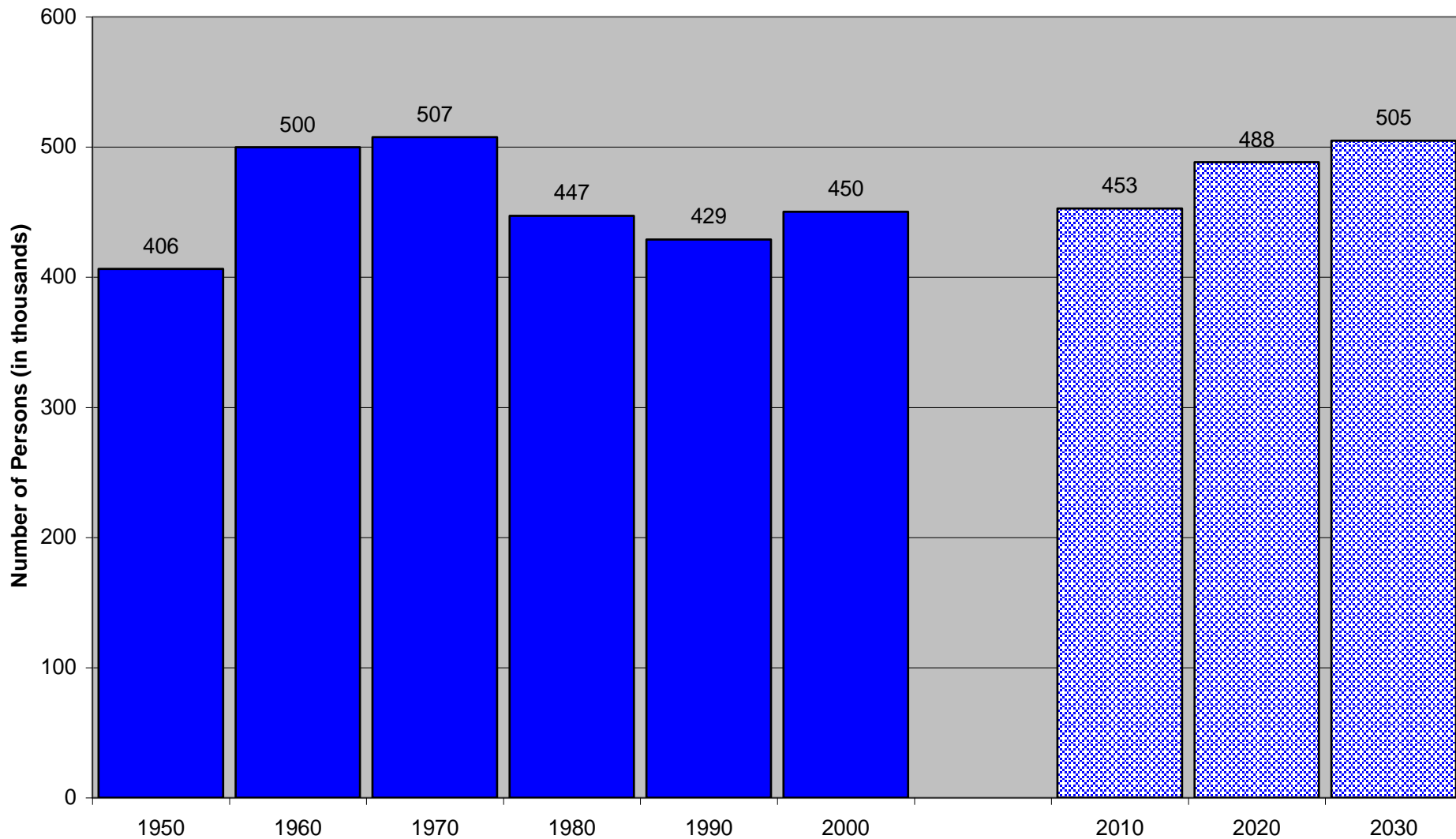
# 2020 Nebraska Population by Sex and Five-Year Age Group



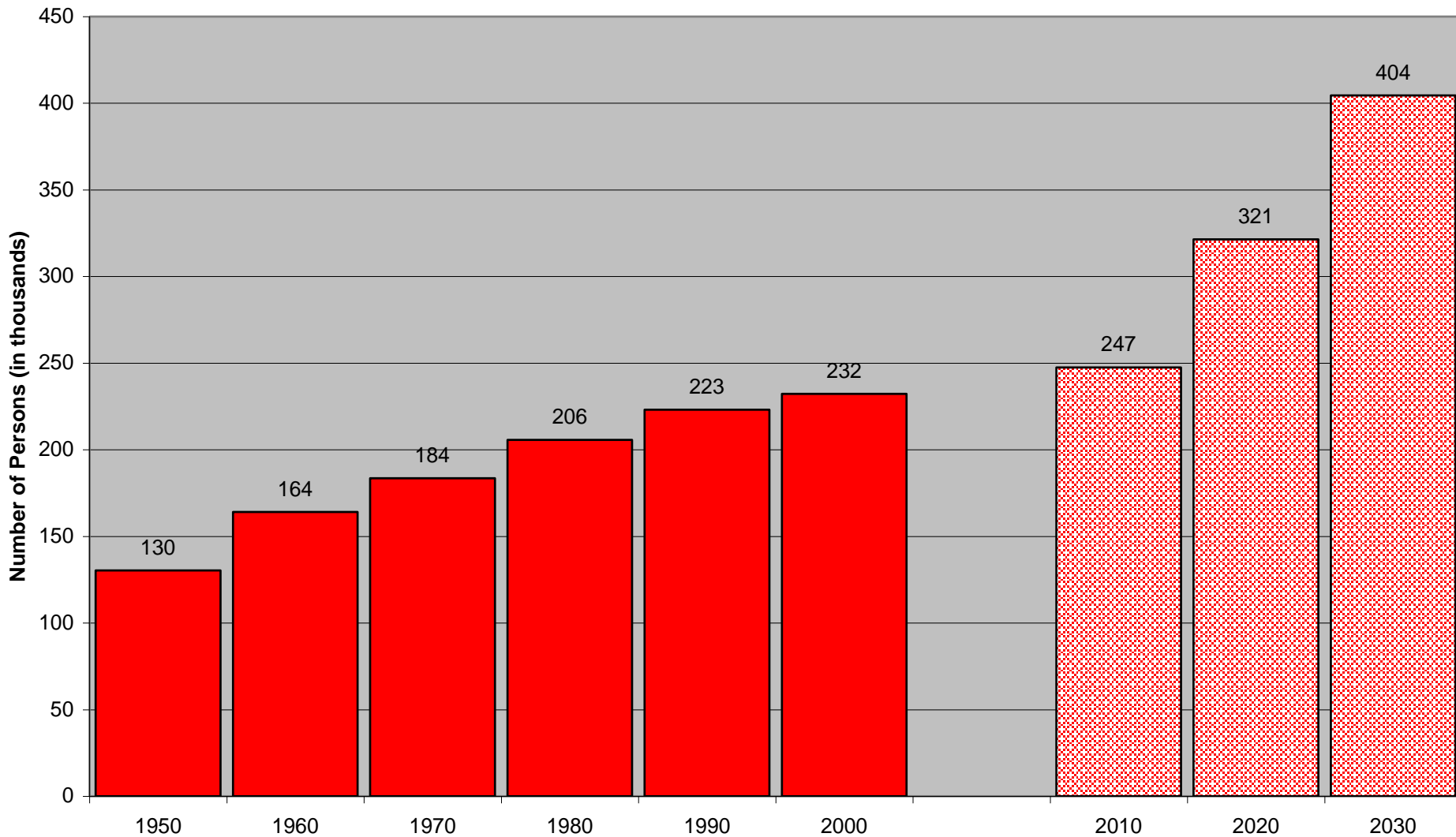
# 2030 Nebraska Population by Sex and Five-Year Age Group



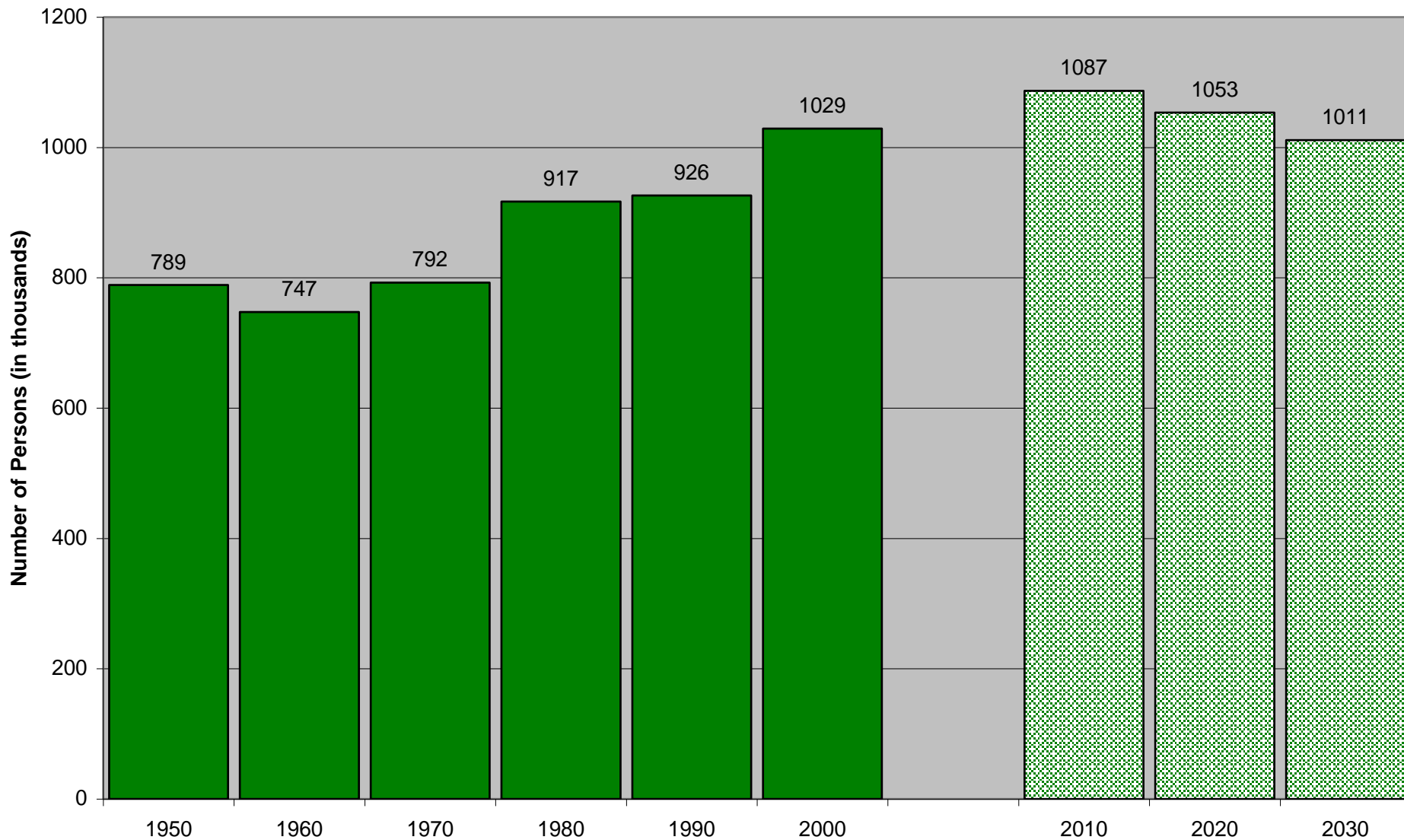
## Population and Population Projections For the Nebraska Population Aged Under 18 Years: 1950 to 2030



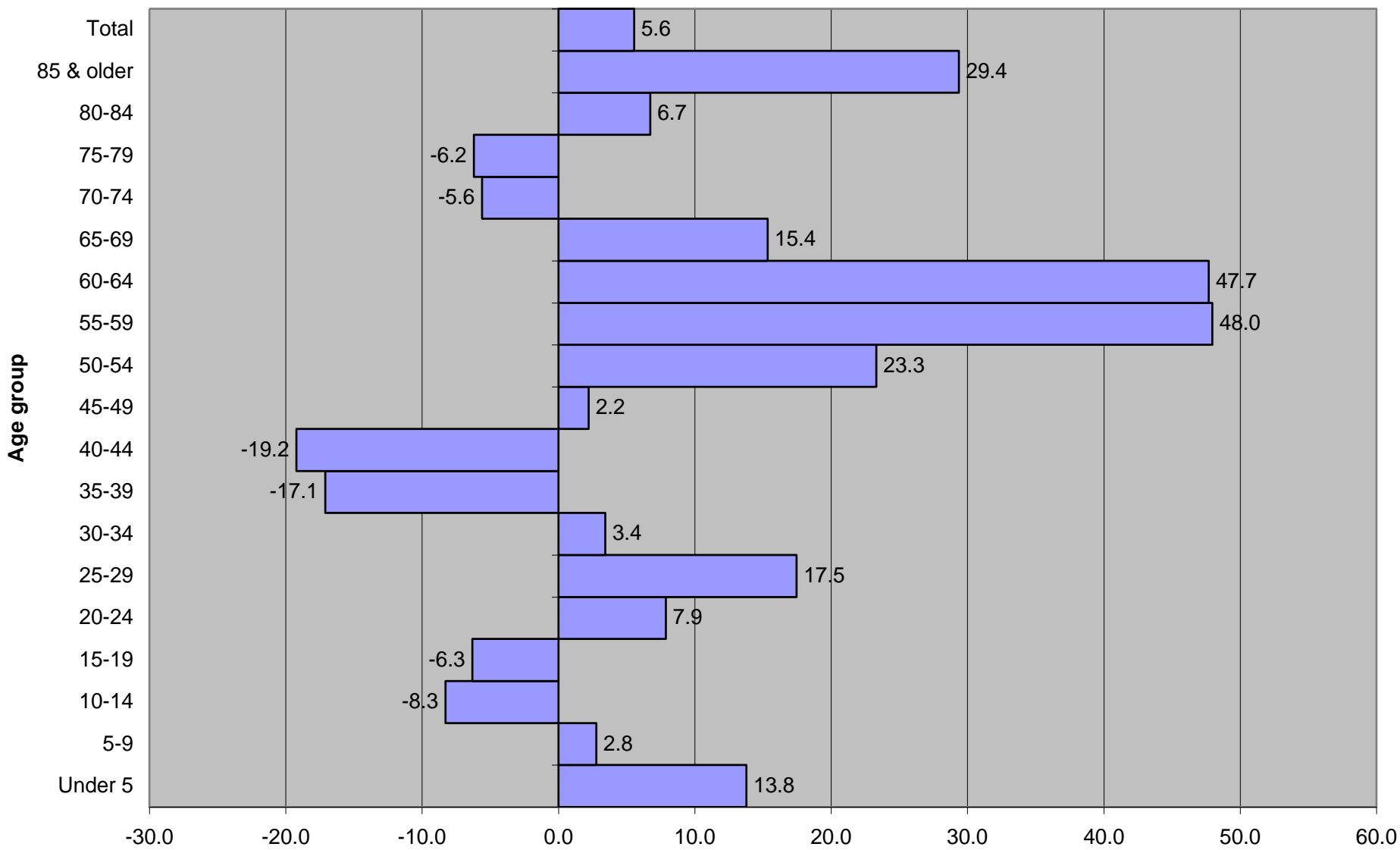
# Population and Population Projections For the Nebraska Population Aged 65 Years or Older: 1950 to 2030



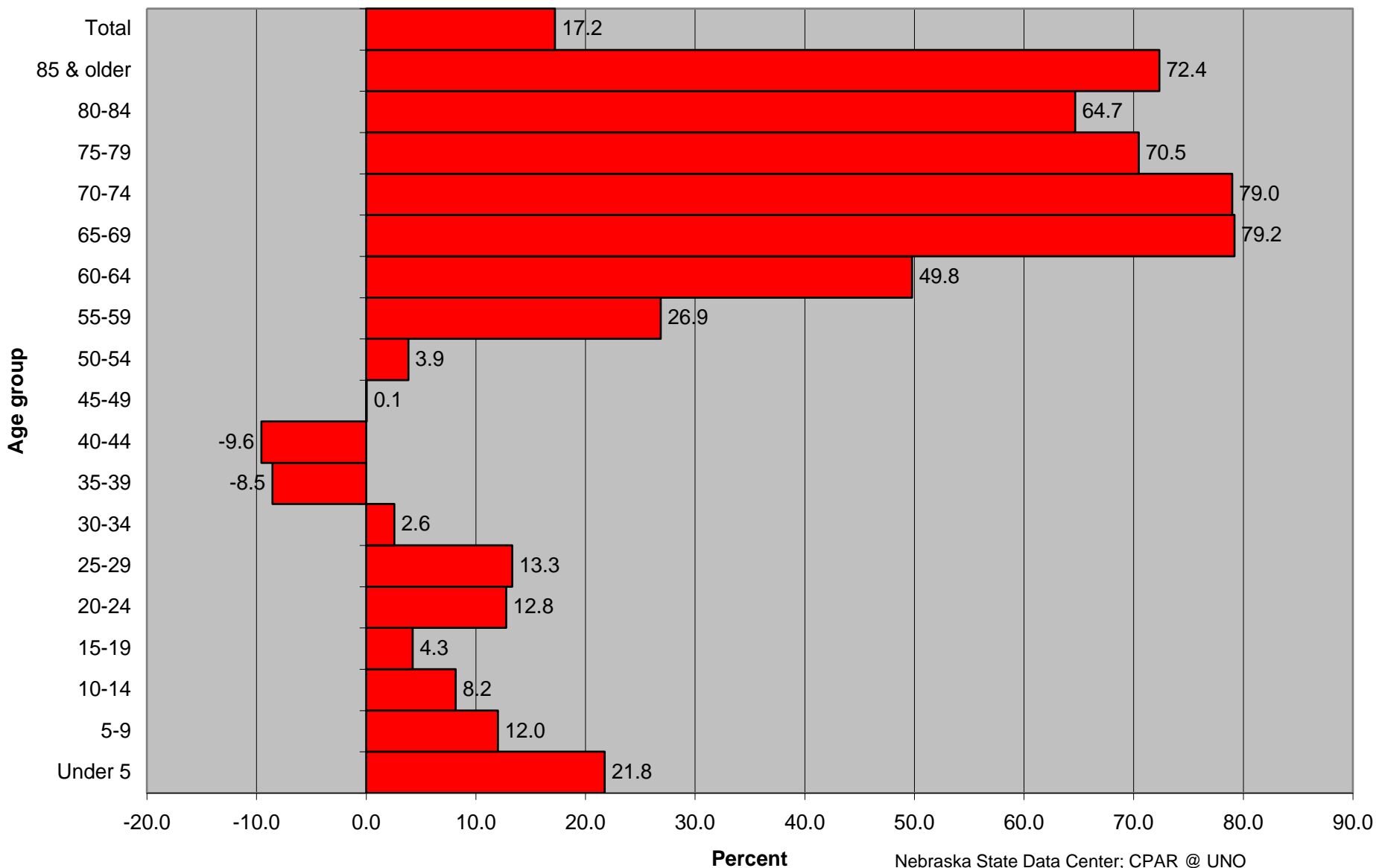
# Population and Population Projections For the Nebraska Population Aged 18 to 64 Years: 1950 to 2030



## Percentage Change in Nebraska Population By 5-Year Age Group: 2000-10



## Percentage Change in Nebraska Population By 5-Year Age Group: 2000-30

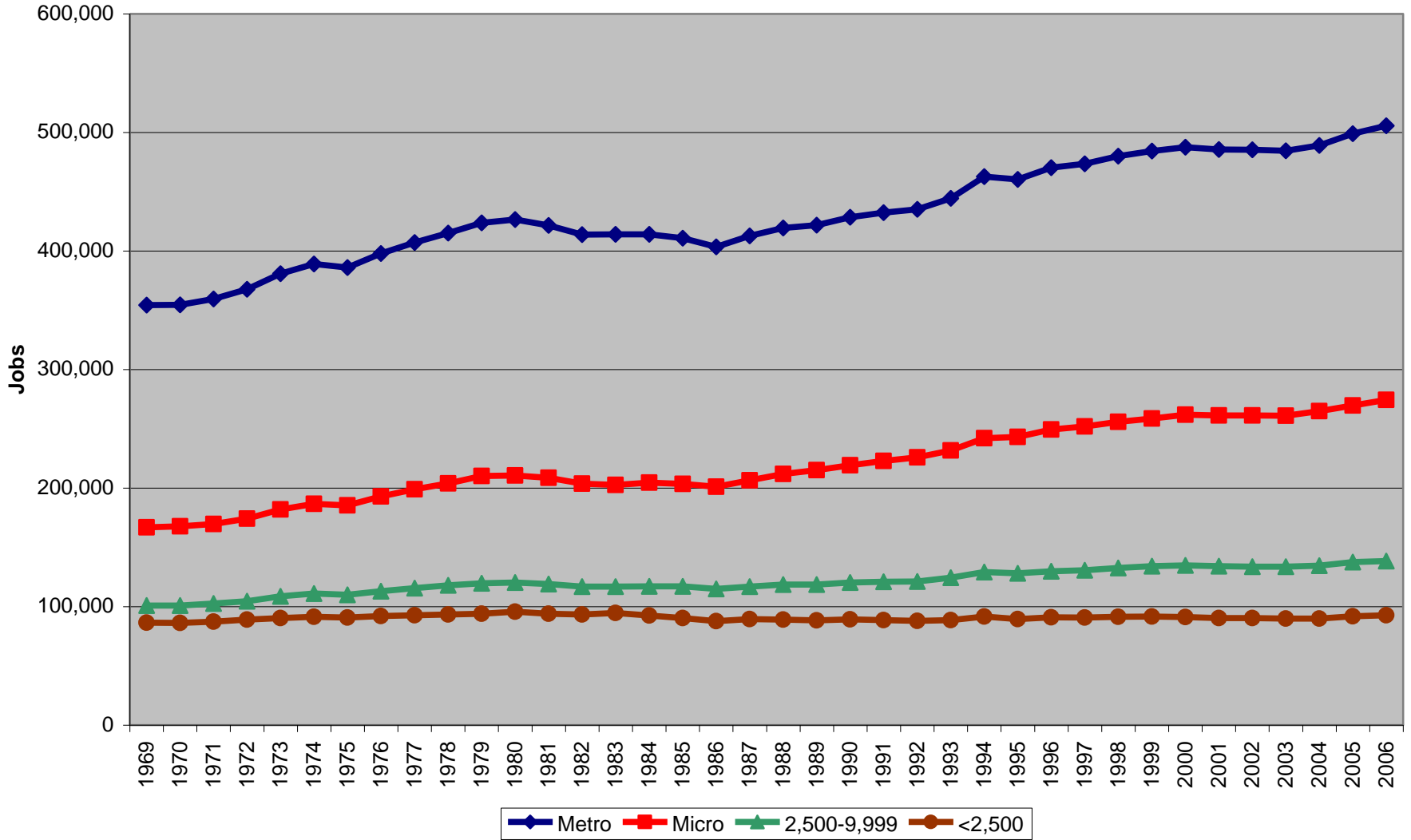




# Bureau of Economic Analysis

- Estimates of personal income and employment for local areas are prepared by the Bureau of Economic Analysis (BEA).
- Annual data for 1969-2005 are presented for counties, metropolitan areas, micropolitan areas, BEA economic areas, states, BEA regions, and for the United States.
- <http://www.bea.doc.gov/>

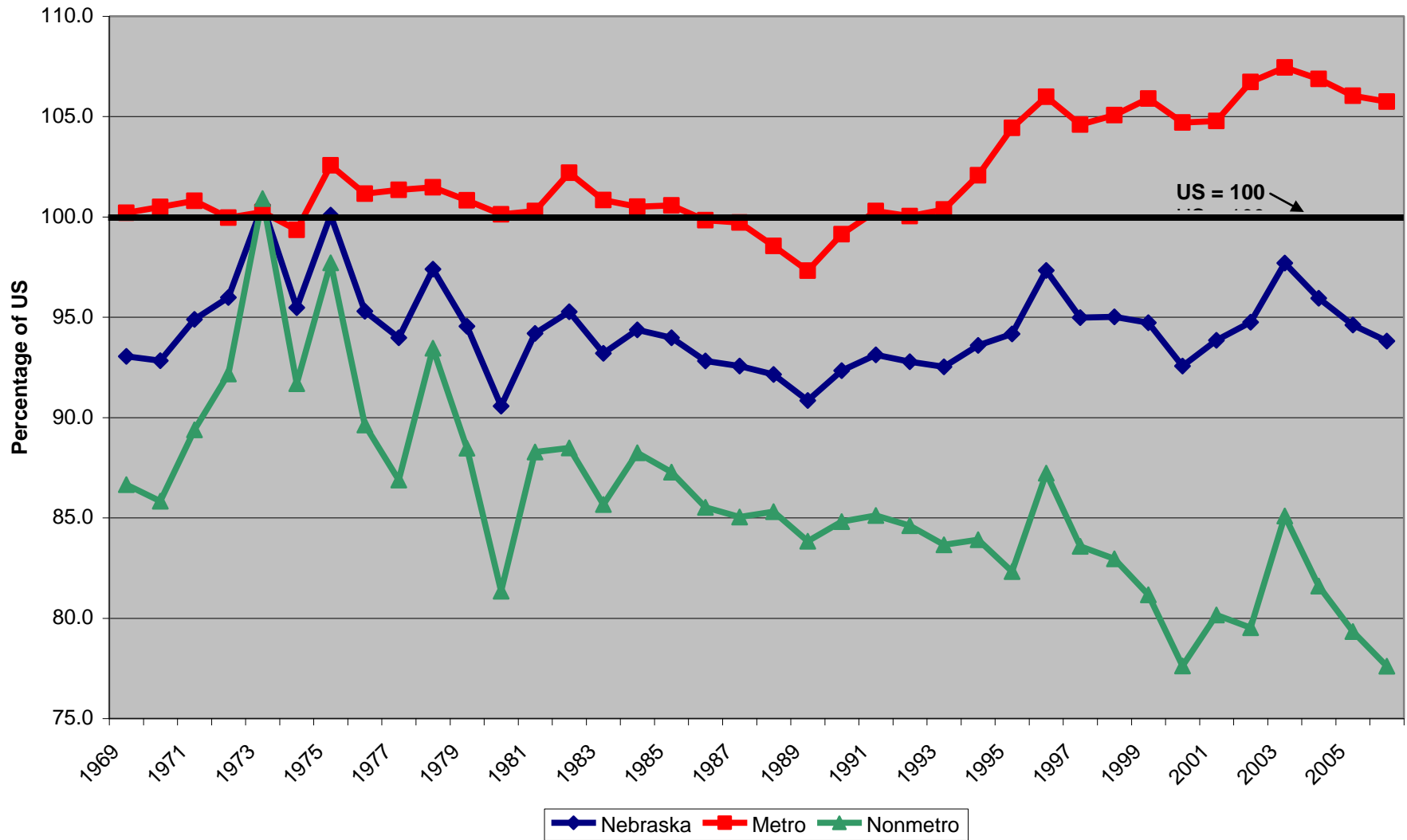
### Jobs in Nebraska Counties By Metropolitan and Micropolitan Status and Size of Largest City 2,500-9,999 and Under 2,500: 1969-2006 (2003 Definitions)



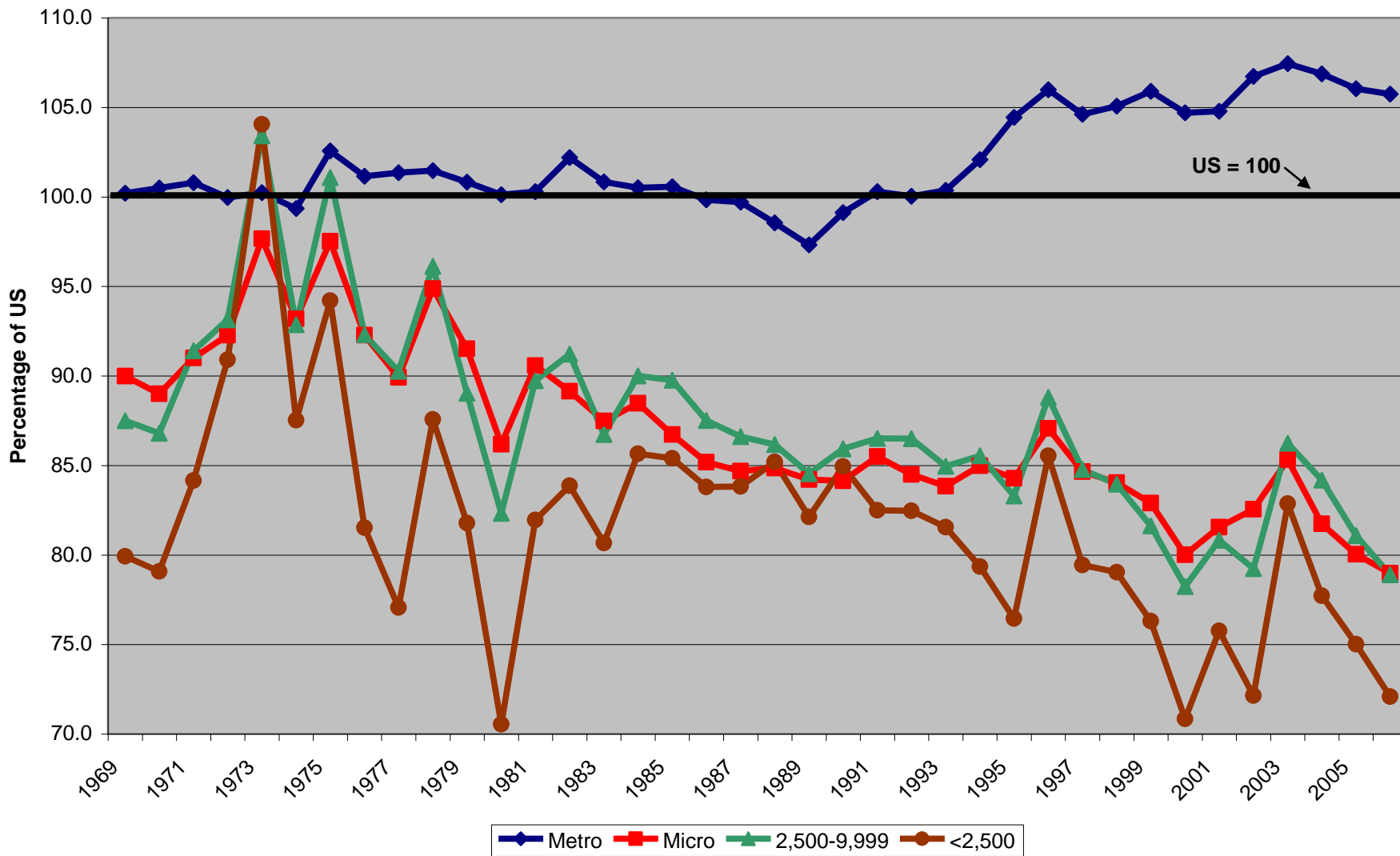
Source: US Bureau of Economic Analysis, Regional Economic Information System

Nebraska State Data Center; CPAR @ UNO

## Per Capita Personal Income of Nebraska Counties As a Percentage of the US By Metropolitan and Nonmetropolitan Status: 1969-2006 (2003 Definitions)



Per Capita Personal Income of Nebraska Counties As a Percentage of the US By Metropolitan and Micropolitan Status and Size of Largest City 2,500-9,999 and Under 2,500: 1969-2006 (2003 Definitions)



Source: US Bureau of Economic Analysis, Regional Economic Information System

# Contact Us With Questions

- David Drozd  
(402) 554-2132  
ddrozd@mail.unomaha.edu
- Jerry Deichert  
(402) 554-2134  
jdeicher@mail.unomaha.edu
- Also view the CPAR website  
<http://www.unomaha.edu/~cpar/>