

Marshall University Marshall Digital Scholar

All Performances

Performance Collection

Winter 1-15-1970

Marshall University Music Department Presents a Senior Recital, Stephen Jarrett, Viola, Janice Bragg, Piano, Judith Cremeans Gibson, Mezzo-soprano

Stephen Jarrett

Judith Cremeans Gibson

Janice Bragg

Follow this and additional works at: http://mds.marshall.edu/music_perf



Part of the [Fine Arts Commons](#), and the [Music Performance Commons](#)

Recommended Citation

Jarrett, Stephen; Gibson, Judith Cremeans; and Bragg, Janice, "Marshall University Music Department Presents a Senior Recital, Stephen Jarrett, Viola, Janice Bragg, Piano, Judith Cremeans Gibson, Mezzo-soprano" (1970). *All Performances*. Book 119.
http://mds.marshall.edu/music_perf/119

This Recital is brought to you for free and open access by the Performance Collection at Marshall Digital Scholar. It has been accepted for inclusion in All Performances by an authorized administrator of Marshall Digital Scholar. For more information, please contact zhangj@marshall.edu.

1-15-1970


Marshall University Music Department Presents a
Senior Recital, Stephen Jarrett, Viola, Janice Bragg,
Piano, Judith Cremeans Gibson, Mezzo-soprano

Stephen Jarrett

Judith Cremeans Gibson

Janice Bragg

Follow this and additional works at: http://mds.marshall.edu/music_perf

 Part of the [Fine Arts Commons](#), and the [Music Performance Commons](#)

MARSHALL UNIVERSITY DEPARTMENT OF MUSIC

PRESENTS

SENIOR RECITAL

Stephen Jarrett, Viola

Janice Bragg, Piano

Judith Cremeans Gibson, Mezzo-soprano

Assisted by

Bert Bostic, Piano

Mary Shep Mann, Piano

Anita Lawson, Clarinet

Nancy Whear, Viola



January 15, 1970

8:15 P. M.

EVELYN HOLLBERG SMITH MUSIC HALL

PROGRAM

I

Allegro

Marcello
(1684-1750)

Stephen Jarrett

II

French Suite No. 6 in E Major

Allemande
Courante
Sarabande
Polonaise

J. S. Bach
(1685-1750)

Janice Bragg

III

Anzoleta dopo la regata
from LA REGATA VENEZIANA

Rossini
(1792-1868)

Gestillte Sehnsucht

Brahms
(1833-1897)

Notre Amour

Fauré
(1845-1924)

Judith Cremeans Gibson

IV

Giga

Sarabanda
Gavotta

Corelli
(1653-1713)

Stephen Jarrett

V

Sonata, Op. 31, No. 2
First Movement, Largo-Allegro

Beethoven
(1770-1827)

Janice Bragg

VI

- All that Gold
from AMAHL AND THE NIGHT VISITORS Gian Carlo Menotti
(1911-)
- The Daisies Samuel Barber
(1910-)
- The Children (Song Cycle)
Grandma
Spic and Span
The Rose Theodore Chanler
(1902-)
- This Day is Mine Harriet Ware
(1877-)
- Judith Cremeans Gibson

VII

- Nocturne, Op. 15, No. 2 in F-sharp Major Chopin
(1810-1849)
- Pour invoquer Pan, dieu du vent d'ete
from SIX EPIGRAPHES ANTIQUES Debussy
(1862-1918)
- Janice Bragg

VIII

- Trio VII in E-flat Major, K. 498 Mozart
Andante (1719-1787)
- Stephen Jarrett

Musicians will receive members of the audience in the
Faculty Lounge following the Concert.

COMING MUSICAL EVENTS

Combined Concert
Symphonic Choir & Wind Ensemble
Jan. 18, 1970

Faculty Recital
Jane Hobson, Mezzo-soprano
Feb. 2, 1970 - 8:15 P. M.

Faculty Recital
Jane E. Schleicher, Soprano
Feb. 5, 1970 - 8:15 P. M.

Metropolitan Opera Auditions
Feb. 14, 1970 - 10:00 A. M.

Band Concert
Mar. 1, 1970 - 3:00 P. M.

Faculty Recital
Paul A. Balshaw, Baritone
Mar. 5, 1970 - 8:15 P. M.

Young Peoples Concert
Mar. 7, 1970 - 11:00 A. M.
Keith Albee Theater

Musical (Music and Speech Departments)
"How to Succeed in Business Without Really Trying"
Mar. 11, 12, 13, 14, 1970 - 8:15 P. M.
Old Main Auditorium

Faculty Woodwind Quintet Concert
Mar. 18, 1970 - 8:15 P. M.

Choral Union Concert
Mar. 23, 24, 1970 - 8:15 P. M.

Contemporary Music Festival
Apr. 2, 3, 4, 1970

All Concerts in Evelyn Hollberg Smith Music Hall
unless otherwise stated.

MARSHALL UNIVERSITY DEPARTMENT OF MUSIC

PRESENTS

SENIOR RECITAL

Stephen Jarrett, Viola

Janice Bragg, Piano

Judith Cremeans Gibson, Mezzo-soprano

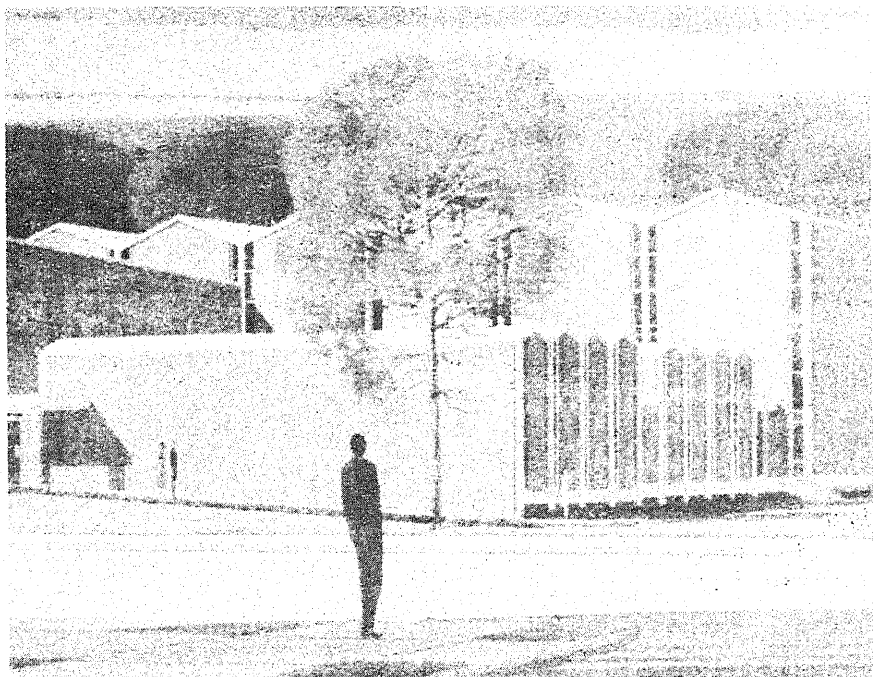
Assisted by

Bert Bostic, Piano

Mary Shep Mann, Piano

Anita Lawson, Clarinet

Nancy Whear, Viola



January 15, 1970

8:15 P. M.

EVELYN HOLLBERG SMITH MUSIC HALL