



Western Washington University
Western CEDAR

Salish Sea Ecosystem Conference

2018 Salish Sea Ecosystem Conference
(Seattle, Wash.)

Apr 6th, 11:45 AM - 12:00 PM

From data to decisions: Navigating the “So What?” and “What’s Next?” conversation around nearshore data

Dawn Spilsbury Pucci
Island County, United States, d.pucci@co.island.wa.us

Follow this and additional works at: <https://cedar.wwu.edu/ssec>



Part of the [Fresh Water Studies Commons](#), [Marine Biology Commons](#), [Natural Resources and Conservation Commons](#), and the [Terrestrial and Aquatic Ecology Commons](#)

Spilsbury Pucci, Dawn, "From data to decisions: Navigating the “So What?” and “What’s Next?” conversation around nearshore data" (2018). *Salish Sea Ecosystem Conference*. 546.
<https://cedar.wwu.edu/ssec/2018ssec/allsessions/546>

This Event is brought to you for free and open access by the Conferences and Events at Western CEDAR. It has been accepted for inclusion in Salish Sea Ecosystem Conference by an authorized administrator of Western CEDAR. For more information, please contact westerncedar@wwu.edu.



From Data to Decisions

NAVIGATING THE “SO WHAT?” AND “WHAT’S NEXT?” CONVERSATION
AROUND NEARSHORE DATA

DAWN SPILSBURY PUCCI, ISLAND COUNTY
SALMON RECOVERY LEAD ENTITY



“We aren’t in this to fund people’s hobbies”



The “So What?” of doing what we are doing...

What are we trying to learn?

How does it apply to us?

What do we do now?

Coordinator Role

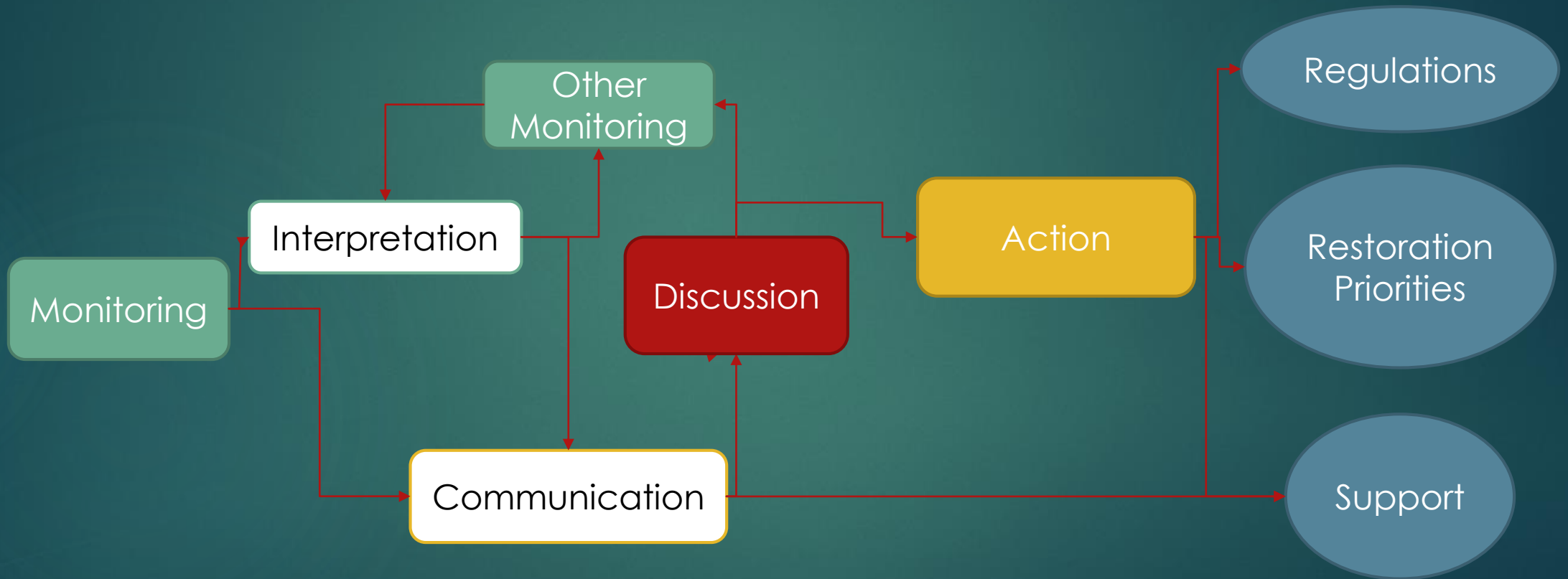
- ▶ My perspective as a synthesizer and interpreter
- ▶ Recognize that there are other regional purposes to research or monitoring done on our shores
- ▶ Life cycle of monitoring & assessments from my POV



What we think happens



What actually happens



Multiple purposes of monitoring

- ▶ Citizen science (important to build support)
- ▶ Big picture (understanding of processes)
- ▶ Projects meant to effect local planning decisions (regulatory and restoration priorities)

Each type follows different types of local decision pathways

First 'Bucket'

CITIZEN SCIENCE MONITORING

Citizen science

- ▶ Seining
- ▶ Eelgrass
- ▶ Pigeon Guillemots
- ▶ Intertidal Habitat
- ▶ Eelgrass
- ▶ Kelp
- ▶ Storm Surge Monitoring
- ▶ Green Crab
- ▶ Etc.....



Citizen Science

- ▶ Gets people involved
- ▶ Sense of ownership
- ▶ Long term data sets
- ▶ But harder to connect back to land use decisions



Beach Seining

- ▶ Presence/absence and abundance
- ▶ 9 years
- ▶ Difficult to isolate cause & effect
- ▶ But GREAT communication tool
- ▶ Do we still need to seine in nearshore?

What's Next?



Eelgrass

- ▶ Collaboration with DNR for site selection & data analysis
- ▶ But not on website. Different scales
- ▶ Used locally for SMP updates
- ▶ Not used by consultants for BSA
- ▶ How do we build off our eelgrass data locally?

What's Next?



Pigeon Guillemots

- ▶ 12 years of data
- ▶ No change, stable
- ▶ How do we modify and evolve?

So What?

& What's Next?





Second 'Bucket'

"BIG PICTURE" MONITORING & ASSESSMENTS

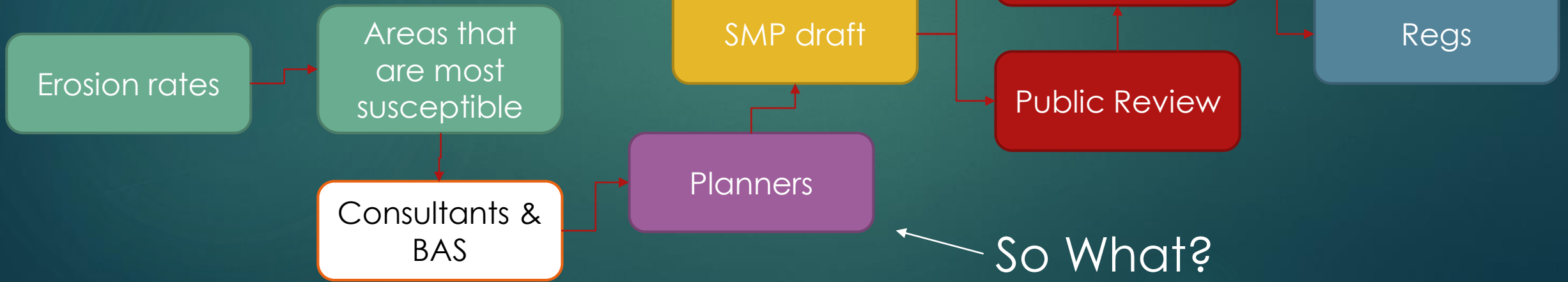
Big Picture

- ▶ Regional in nature
- ▶ Foundation for 'specific' studies
- ▶ Less or no local support necessary to implement (good thing!)
- ▶ Can be too broad to make decisions (not parcel or component specific)
- ▶ Some still try to get implemented locally – once they are 'discovered'



Big Picture Action Plan

- ▶ Several studies looking at bluff recession rates
- ▶ Wave modeling





Third 'Bucket'

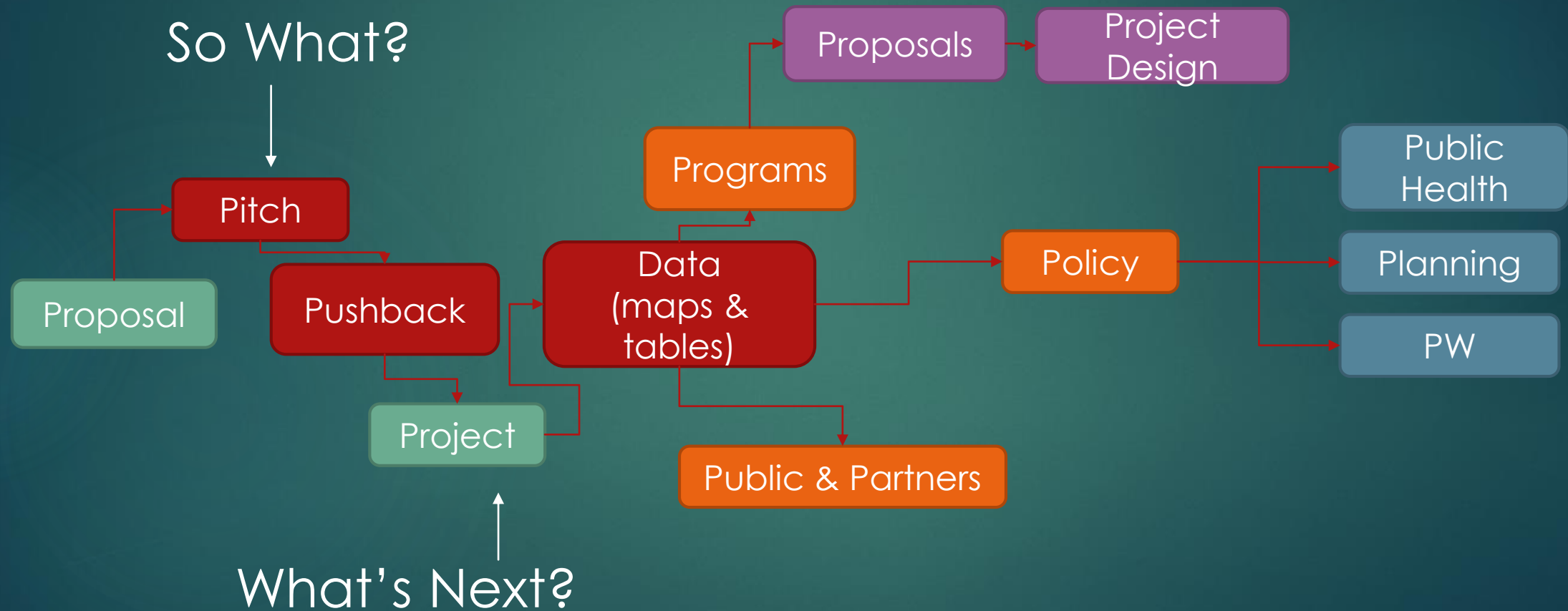
LOCAL SCALE MONITORING & ASSESSMENTS

Action Oriented

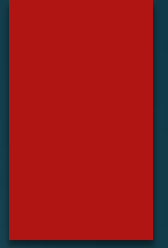
- ▶ Goal is to inform decisions
- ▶ More appropriate scale (often)
- ▶ Most effective when we are involved in the development



Sea Level Rise & Coastal Flood Risk



Barriers – Big 3



- ▶ The “pathway” isn’t paved ahead of time.
 - ▶ Don’t hear about monitoring or studies ahead of time
 - ▶ The “So What” isn’t defined
- ▶ Lack of local context or scale
 - ▶ The “So What” isn’t connected to something we can actually affect
- ▶ Decisions already made and don’t want to use data
 - ▶ The “What’s next” wasn’t agreed upon early enough

Help us help you

- ▶ Engage local jurisdictions early – Pave the Pathway
- ▶ Send us final reports – Close the Loop
- ▶ Budget to help with communication – Decision makers want to hear from you, Subject Matter Experts, not staff....

Thank you!



Armoring Layer

