



Western Washington University
Western CEDAR

Salish Sea Ecosystem Conference

2014 Salish Sea Ecosystem Conference
(Seattle, Wash.)

May 1st, 3:30 PM - 5:00 PM

Snohomish Basin Protection Plan - innovative approaches to hydrology protection opportunities

Beth LeDoux

King County (Wash.). Water and Land Resources Division, beth.ledoux@kingcounty.gov

Abby Hook

Hook-Knauer

Joshua S. Kubo

Tulalip Tribes

Mike Rustay

Snohomish County

Janne Kaje

King County (Wash.). Water and Land Resources Division

See next page for additional authors

Follow this and additional works at: <https://cedar.wwu.edu/ssec>

 Part of the [Terrestrial and Aquatic Ecology Commons](#)

LeDoux, Beth; Hook, Abby; Kubo, Joshua S.; Rustay, Mike; Kaje, Janne; Engel, Kate; and Ruff, Morgan Schniedler, "Snohomish Basin Protection Plan - innovative approaches to hydrology protection opportunities" (2014). *Salish Sea Ecosystem Conference*. 269.

<https://cedar.wwu.edu/ssec/2014ssec/Day2/269>

This Event is brought to you for free and open access by the Conferences and Events at Western CEDAR. It has been accepted for inclusion in Salish Sea Ecosystem Conference by an authorized administrator of Western CEDAR. For more information, please contact westerncedar@wwu.edu.

Speaker

Beth LeDoux, Abby Hook, Joshua S. Kubo, Mike Rustay, Janne Kaje, Kate Engel, and Morgan Schniedler Ruff

Snohomish Basin Protection Plan Technical Approach

Beth leDoux- King County, Josh Kubo-Tulalip Tribes, Mike Rustay – Snohomish County
Abby Hook Hook-Knauer, Morgan Ruff -Tulalip Tribes, Janne Kaje and Perry Falcone - King County, Karen
Stewart - Snohomish County, Kate Engle - Parametrix



Objectives

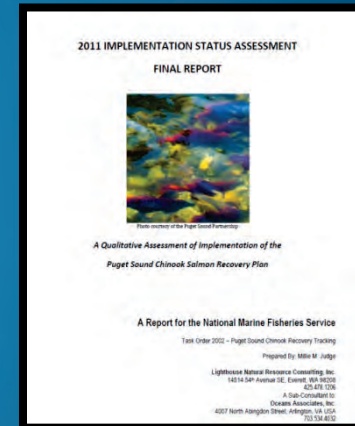
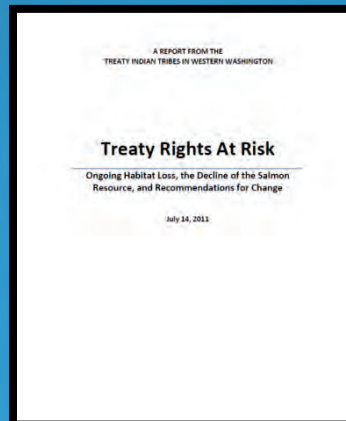
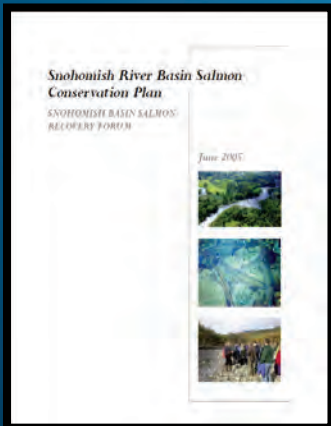
- Background of Snohomish Basin Protection Plan
- Technical approach using the Pilchuck Example
- How the technical approach might inform protection strategies

Background

2005 Snohomish River Basin Salmon Conservation Plan

Treaty Rights at Risk, Treaty Indian Tribes in Western Washington

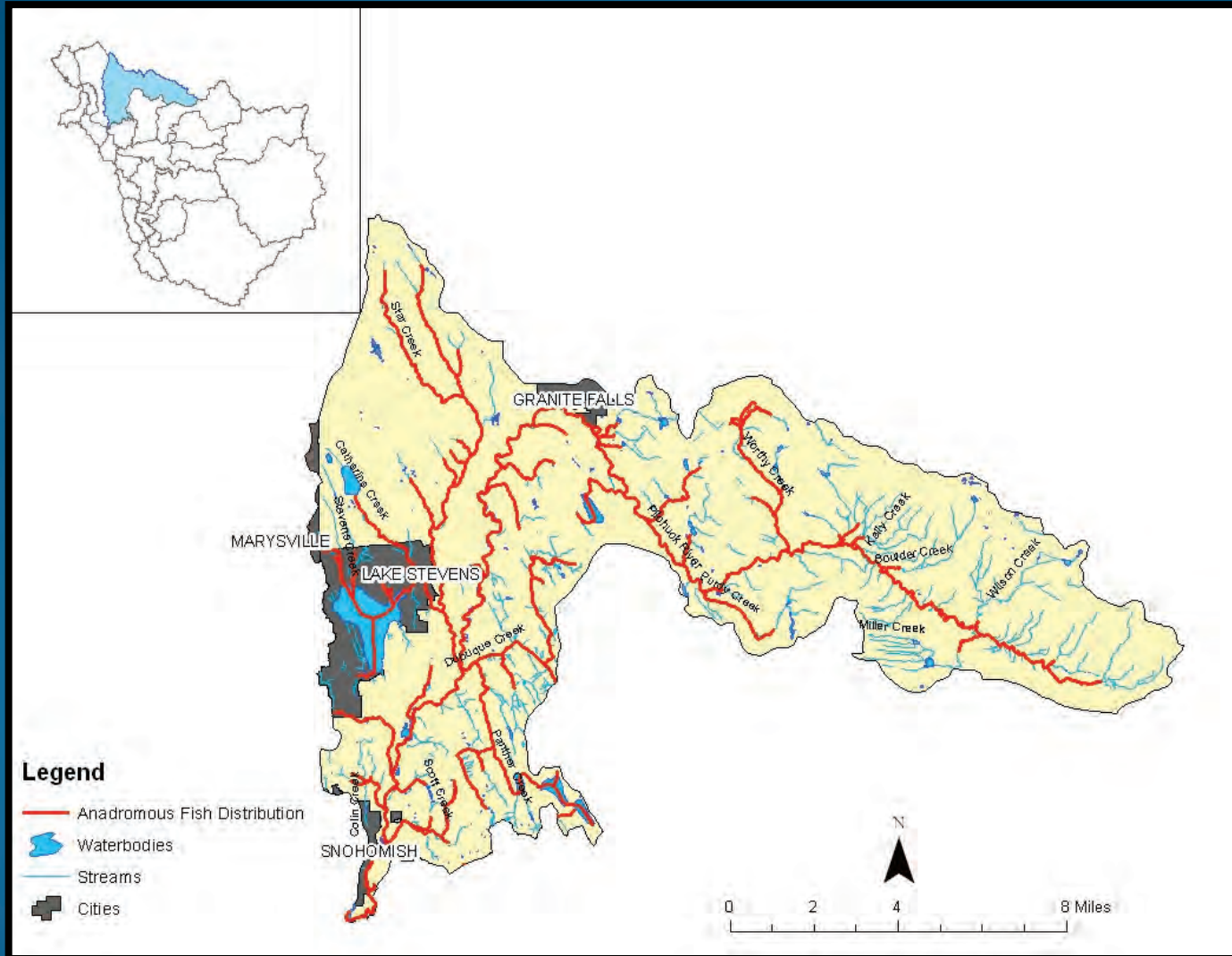
2011 Implementation Status Assessment Final Report, Millie Judge



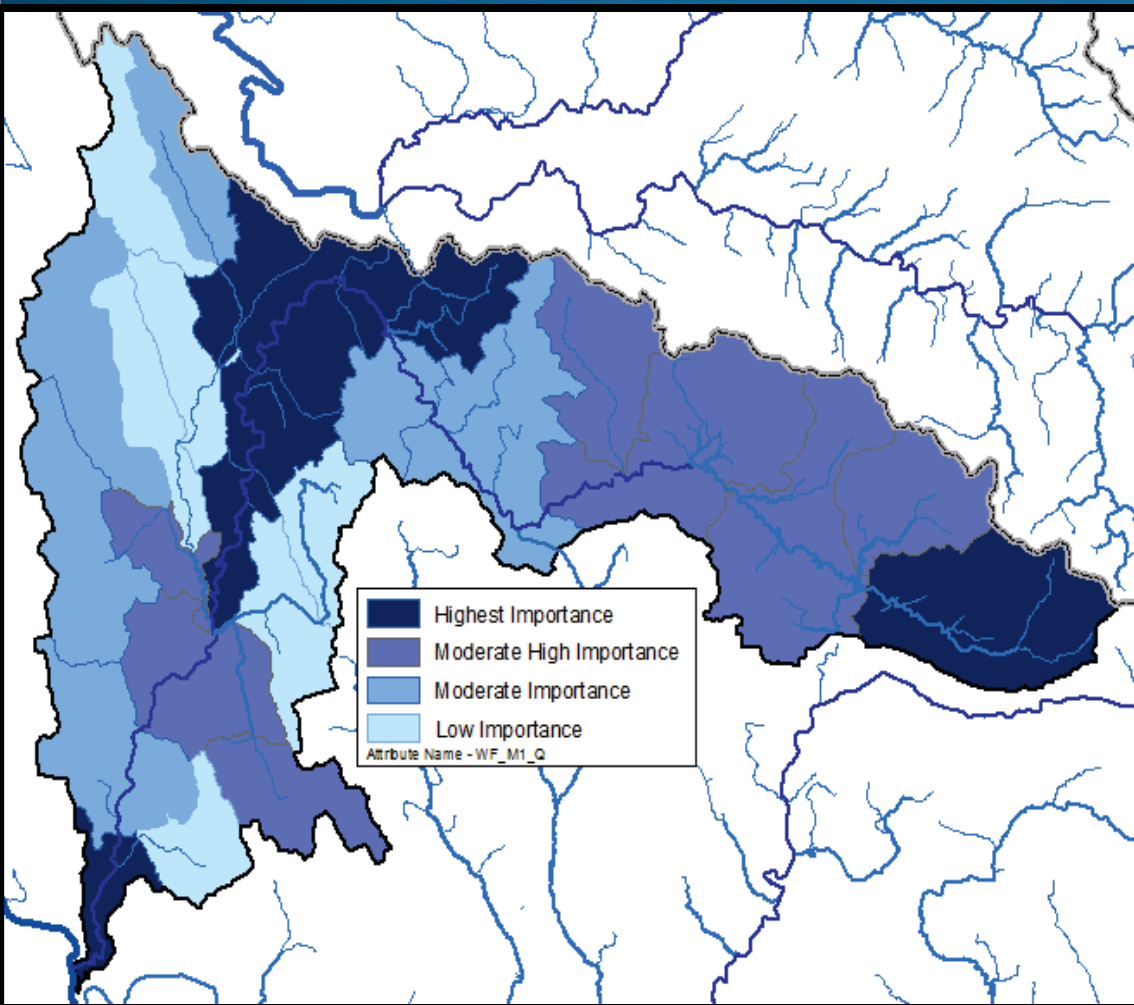
Protection:

“Any action that prevents the degradation of hydrologic processes, which support salmon or salmon habitat, regardless of their existing levels of degradation”

The Pilchuck River Basin

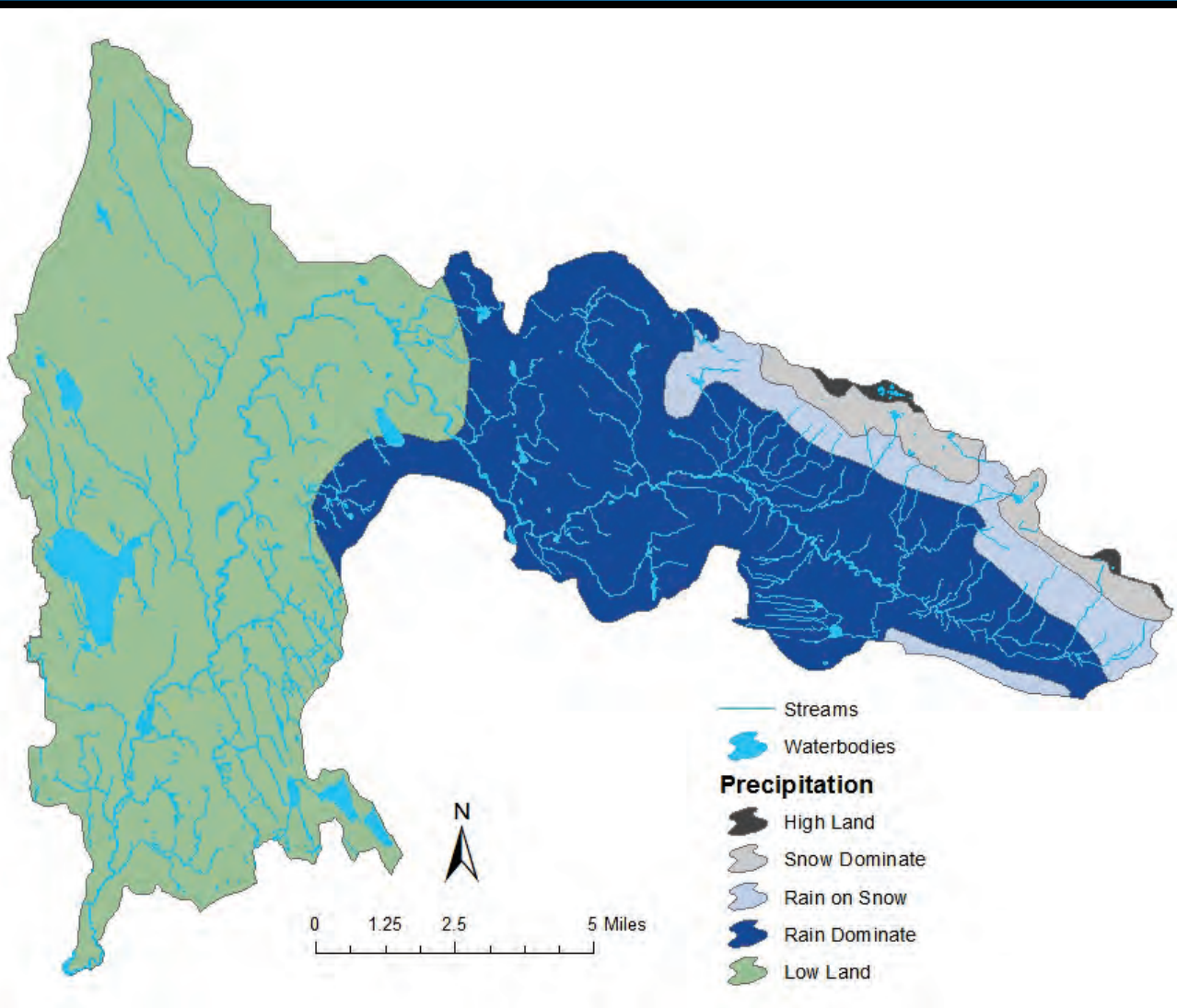


Watershed Characterization Overall Flow Importance Model



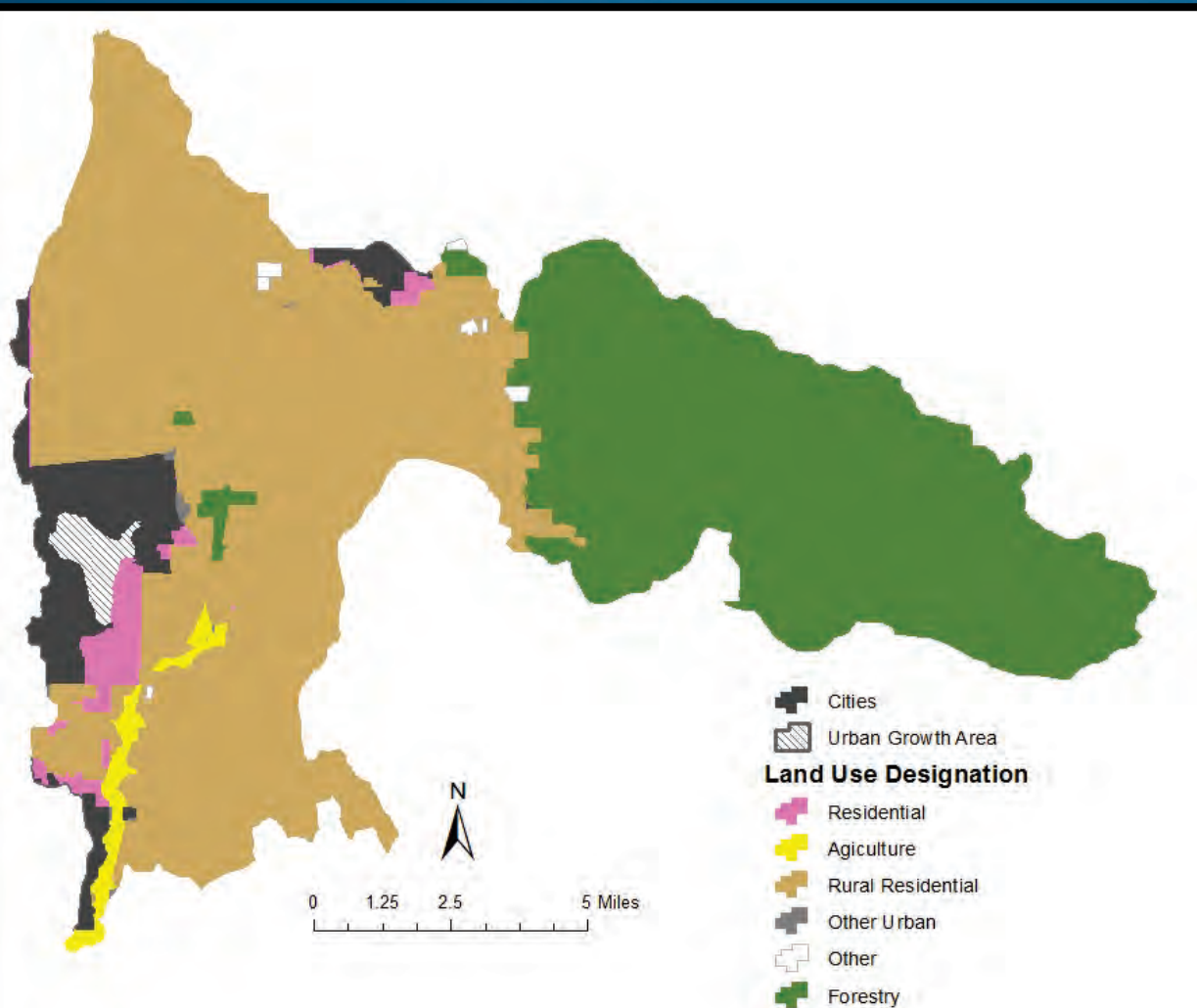
- Upper headwaters of the Pilchuck
- Middle Pilchuck between Granite Falls and Lake Stevens,
- Mouth of the Pilchuck near Snohomish

Precipitation Regime



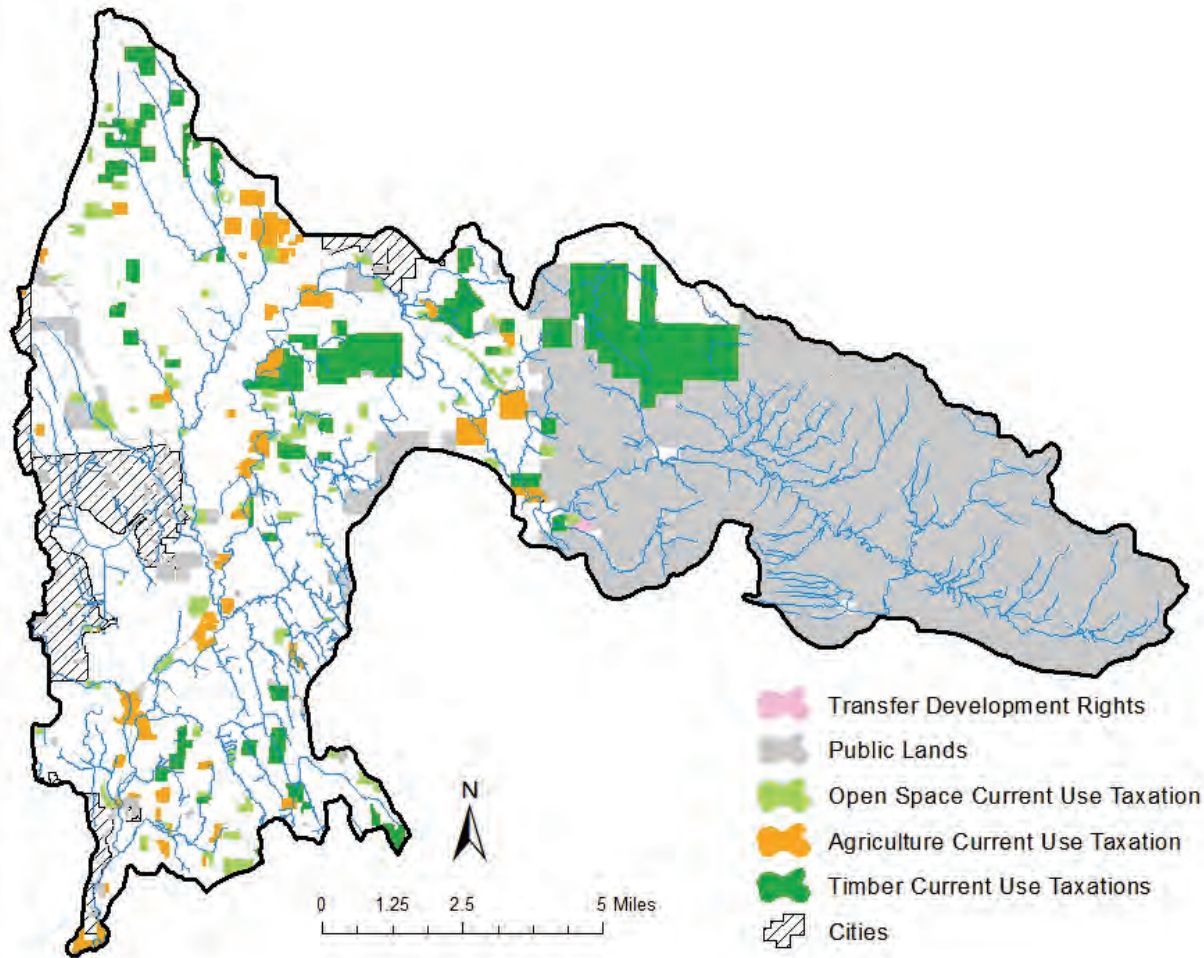
- Rain (33.1%)
- Lowland (56.7%)

Primary Land Use Designation



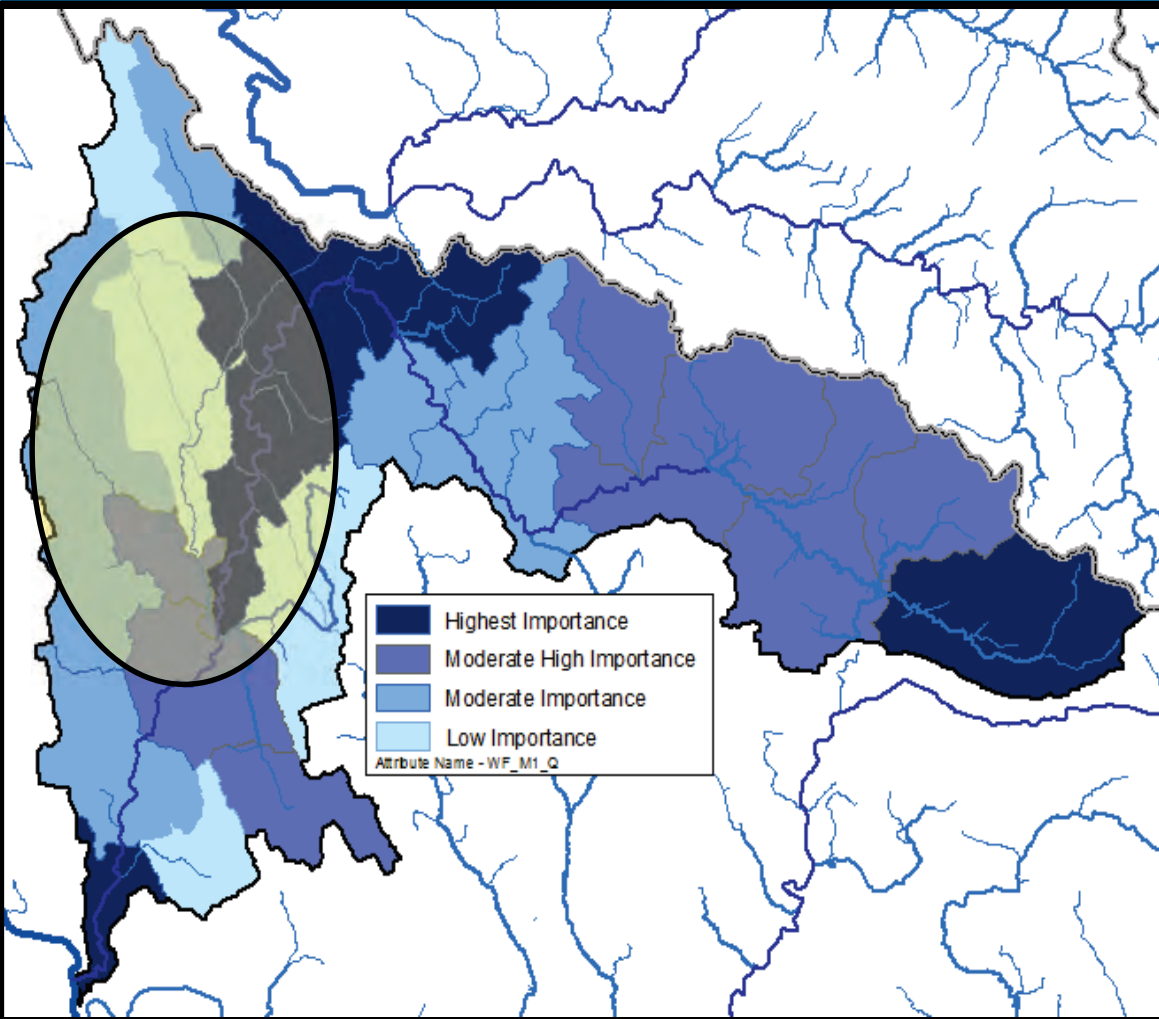
- Rural Residential (51.1%)
- Forestry (37.9%)

Existing Protection Strategies



- Public Lands (35.2%)
- Timberlands (6.7%)
- Agriculture (2.3%)
- Open Space (1.8%)

Potential Protection Opportunities/Strategies



- Use LID in development, especially near wetland complexes near western portions of watershed.
- Study exempt wells in this part of the basin to determine effects on low flow.
- Ensure local regulations are protective of ground water recharge and water storage.
- Enroll properties in current use taxation programs

Summary



- New focus on protection, not just restoration
- Technical approach uses several lenses to look at hydrology in basin
- Technical approach will help inform protection strategies

Questions?