

1918

## Student's Handbook (1918)

Y.W.C.A., Hollins College

Follow this and additional works at: <https://digitalcommons.hollins.edu/handbook>

 Part of the [Higher Education Commons](#), [Social History Commons](#), [United States History Commons](#), and the [Women's History Commons](#)

---

### Recommended Citation

Y.W.C.A., Hollins College, "Student's Handbook (1918)" (1918). *Student Handbooks*. 3.  
<https://digitalcommons.hollins.edu/handbook/3>

This Book is brought to you for free and open access by the Hollins Publications at Hollins Digital Commons. It has been accepted for inclusion in Student Handbooks by an authorized administrator of Hollins Digital Commons. For more information, please contact [lvilelle@hollins.edu](mailto:lvilelle@hollins.edu), [millerjc@hollins.edu](mailto:millerjc@hollins.edu).

# STUDENT'S HANDBOOK

---

---

HOLLINS COLLEGE  
HOLLINS, VA.



1918-1919

PRESENTED BY THE Y. W. C. A.

Ruby Saunders, 12 main

Uildred

Helen

Sueile Gray 77 East

105 W. Sayre

95 W. of Sandidge

a.w.  
131 W. - Minister Miller

144 West  
E. Crook  
**THE HANDBOOK**

107 West  
OF  
Hearsey  
**HOLLINS COLLEGE**

Hardwick



Rachel Mills 135 W.

**WATCHWORD**—"Not by might nor by  
power, but by my spirit, saith the  
Lord of Hosts"



PRESENTED BY THE Y. W. C. A.

PRESS OF  
THE OBSERVER PRINTING HOUSE, INC.  
CHARLOTTE, N. C.  
1918

GREETINGS :



The Young Women's Christian  
Association

of

Hollins College

welcomes you to our school

and

assures you of

our heartiest co-operation

in

all the interests of your school life

## PURPOSE

The purpose of this Association shall be to unite the students in common loyalty to Jesus Christ, to lead them to accept him as their personal Savior, to build them up in the knowledge of Christ thru Bible study and Christian service, and to enlist co-operation with Christian churches and with other religious work in the College.

---

## OFFICERS, 1918-1919

ADELAIDE BASS.....*President*  
HELEN HARDWICKE.....*Vice-President*  
ELIZABETH WITT.....*Secretary*  
MARY LEE KEISTER.....*Treasurer*

---

## THE CABINET AND COMMITTEE WORK

The Cabinet is essentially the Executive Committee of the Association. Its personnel consists of the president, vice-president, secretary, treasurer, and the heads of the departments. The Cabinet Commission consists of the cabinet and chairmen of sub-committees.

The Cabinet represents every department of Association activity, and meets once a week. The Cabinet Commission

meets once a month. It has the responsibility of initiating and carrying out the plans for the developing and strengthening of the Christian activities of the College and the spiritual life of every young woman student.

### I. THE MEMBERSHIP DEPARTMENT

HELEN HARDWICKE, *Chairman*

This department edits the Handbook, presents the purpose, manages the membership campaign, and endeavors to develop the membership into an efficient working force.

Sub-Committees:

- (a) Freshman Commission  
Sunshine Pope
- (b) Conference Representation  
Virginia Glover

### II. THE RELIGIOUS MEETINGS DEPARTMENT

LUISE RATH, *Chairman*

This department arranges for all regular and special services, thru the following sub-committees:

- (a) Program.....Luise Rath
- (b) Music.....Lettie Withrow
- (c) Poster.....Kathleen Collier
- (d) Room.....Elinor Boldrick
- (e) Morning Watch  
Mary Bullington

### III. THE WORLD FELLOWSHIP DEPARTMENT

RACHEL MILLS, *Chairman*

Thru special meetings, mission study classes, and general education, this Department promotes a spirit of world fellowship thruout the College.

Sub-Committee:

- (a) Mission Study Classes  
Rachel Mills
- (b) World Fellowship Giving  
Louise Winston

### IV. THE PUBLICITY DEPARTMENT

FELICIA TAYLOR, *Chairman*

This department presents to the Association information collected in regard to the World, American, and State Association work, and other Religious and Philanthropic movements.

Sub-Committee:

- Library and Publications  
Virginia Lee Cox

### V. THE COMMUNITY SERVICE DEPARTMENT

KATHLEEN KELLY, *Chairman*

This department strives, thru activities of friendliness and unselfishness, in the College and in the community, to put the principles of Christ into practice.



Sub-Committees:

- (a) Leadership Preparation  
Elizabeth Lineburger
- (b) Community Work  
Katherine Crowley

VI. THE SOCIAL DEPARTMENT

ELIZABETH TINSLEY, *Chairman*

This department aims, by social gatherings and the setting of high social standards, to create a wholesome social atmosphere, which shall permeate the whole student-body.

Sub-Committees:

- (a) Social Entertainments  
Elizabeth Tinsley
- (b) Social Standards  
Marian Lee Cobbs

VII. THE FINANCE DEPARTMENT

SUSAN BUCKNER, *Chairman*

This Department collects the membership fees, prepares a budget of estimated expenses for the year, devises plans for raising special funds, and encourages systematic giving.

Y. W. C. A. ACTIVITIES

*Weekly Meetings*—Sunday at 2.00 p. m., in the Chapel.

*Morning Watch*—Every morning except Sunday, at the first triangle

before breakfast, in the Y. W. C. A. room.

*Annual Opening Reception.*

*Christmas Bazaar.*

*Christmas Entertainment.*

*Christmas "Box" Party*—An evening of packing boxes for the poor in the vicinity of the College.

*Weekly teas* in the Y. W. C. A. rooms, for the purpose of getting acquainted.

*Weekly children's play hour* at Enon Baptist Church, conducted by the Hollins girls.

---

BLUE RIDGE CONFERENCE

Every year, early in June, a Y. W. C. A. Conference is held at Blue Ridge. N. C. Blue Ridge is a beautiful place, in the heart of the Blue Ridge Mountains, about eighteen miles from Asheville, N. C. Here southern students gather for ten glorious days of valuable instruction and wholesome good times.

This Conference is conducted by well-known Association workers and other Christian leaders. Intercourse with them is a source of great help and inspiration, not only for Y. W. C. A. work, but in one's own personal life.

Hollins has now a lovely cottage with Richmond Medical College, beautifully

located on the side of the mountain. The Hollins girls use it during the Y. W. C. A. Conference, and the Richmond Medical College boys during the Y. M. C. A. Conference following.

Last year the following girls attended the Y. W. C. A. Conference: Anna Campbell, Elsie Evans, Virginia Glover, Mildred Hearsey, Lucile Stuart, Adelaide Bass, Esther Rountree, and Luise Rath. Many more are planning to go this summer. Don't fail to attend at least one of these Conferences during your College course.



## WHY YOU SHOULD BELONG TO THE Y. W. C. A.

1. The Association is the only religious organization in College, and as such should have the support of every Christian student.
2. The Association brings you into close fellowship with the other students.
3. It will deepen your own spiritual life, and will afford you good training in Christian work.
4. It will present to you the deeper, truer meaning of Christianity.
5. The Association can not be a success without the co-operation of all Christian girls.

The Hollins Young Woman's Christian Association needs *you*.

### *How You Can Help The Association*

1. By attending morning watch and all regular meetings.
2. By joining the Mission and Bible Study Classes.
3. By prayer at all times.
4. By being ever enthusiastic in all Y. W. C. A. work, and never discouraging a would-be worker by even so much as a glance.

"Whoever we are, we need to be loved; and friendship exacts a return."



You are cordially invited to

attend the

Annual Reception

given by the

Young Women's Christian Association

in the

"Kellar"

on Saturday evening

September the twenty-first

nineteen hundred and eighteen

## THE STUDENT GOVERNMENT ASSOCIATION

This Association is composed of all College students, and purposes to develop an efficient system of self-government among them in matters relating to the conduct of the students individually and in relation to other students. Annual fee, one dollar.

### *Officers*

SALOME HADAWAY.....*President*  
JULIA MORROW CHURCH.....*Secretary*  
FELICIA TAYLOR.....*Treasurer*

### *Executive Council*

1919

LETTIE WITHROW  
GRACE SIMPSON  
ANNE MONTAGUE

1920

MARGARET COX  
NAOMI PEAK  
VIRGINIA GLOVER

1921

JULIA MORROW CHURCH  
VIRGINIA COX

---

## THE COLLEGE PREPARATORY ASSOCIATION

This Association is composed of all College preparatory students. It is modeled according to the general principles of the student government Association, but is more under faculty supervision.

## PUBLICATIONS

The "*Spinster*" is published annually by the student-body.

### Staff

ELSIE EVANS.....*Editor-in-Chief*

MARGARET WEST.....  
ELIZABETH TURNBULL.....  
MILDRED HEARSEY.....  
ELIZABETH JOHNSON.....  
} *Associate Editors*

LOUISE WILLIS.....  
GERTRUDE HAUSER.....  
} *Art Editors*

RACHEL MILLS.....*Business Manager*

ELIZABETH BUXTON.....*Asst. Business Mgr.*

The "*Hollins Magazine*" is published monthly by the student-body.

### Staff

LUISE RATH.....*Editor-in-Chief*

ELAINE SAUVAGE.....  
ANNE MONTAGUE.....  
MILDRED HEARSEY.....  
SALLIE TATE CHERRY.....  
FELICIA TAYLOR.....  
} *Associate Editors*

ELIZABETH JOHNSON.....  
ALYS LEE WOOD.....  
LUCILE CRIM.....  
} *My first room-mate*

KATHERINE JOHNSON.....*Business Manager*

KATHLEEN KELLY.....*Asst. Business Mgr.*

## THE ATHLETIC ASSOCIATION

This Association has management of the Thanksgiving Basket-Ball game and Banquet, of the annual field meet, and tennis tournament. It keeps the tennis courts, basket-ball and hockey fields in good condition, and provides necessary accessories for these sports, with the exception of tennis racquets. Every student is expected to join. Annual fee, one dollar.

### Officers

MILDRED HEARSEY.....*President*

LOUISE HARWELL.....*Vice-President*

ETHEL RUSSELL.....*Secretary and Treasurer*

MISS GROSSCUP

*Coach, and Faculty Advisor*

## LITERARY SOCIETIES

The Euzelian and Euepian Literary Societies are for College students only. Preparatory students are members of the Matty L. Cocke Literary Society.

## SORORITIES

The following National Sororities have chapters at Hollins College:

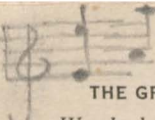
Pi Beta Phi	Delta Delta Delta
Kappa Delta	Gamma Phi Beta
Phi Mu	Beta Sigma Omicron

## HELPFUL HINTS

1. Never be late for anything.
2. Do not fail to bring your catalog with you.
3. From the very first, take an interest in everything. You'll soon love Hollins, and Hollins will love you.
4. If you play tennis, bring your racquet; and if you love basket-ball be sure to try for one of the teams.
5. Bring only plain dresser and table covers. Fancy ones wear out.
6. Bring hammer, scissors, tape-measure, and a knife.
7. Bring any pictures, pennants, or pillows that you may have, to make your room look cheerful.
8. Bring walking togs!
9. Bring two laundry bags—one for your room, and one for the washwoman.
10. Learn the Hollins songs.
11. Don't forget your Bible; you'll need it every day.

## DAILY SCHEDULE

- 6.45—Rising Bell.
- 7.15—First Triangle before breakfast.
- 7.30—Breakfast.
- 8.10 to 1.00—Classes.
- 1.15—Lunch.
- 2.00 to 4.00—Classes.
- 4.00 to 6.00—Recreation.
- 6.15—Dinner.
- 7.00—Chapel.
- 7.00 to 10.30—Study Hour.
- 10.30—Lights Out.



## THE GREEN AND THE GOLD

Words by Phoebe Hunter, 1909

Music by Alma McConihay, 1910

### I

O fair maiden Spring, what hue will you bring  
To our cause from your own sunny sheen?  
You have brought for your part the hue nearest your heart,  
And spread Hollins' hillsides with green.  
And you, frosty Fall, the most brilliant of all,  
What color for us do you hold?  
You have laid your fair hand with its torch on our land,  
And set our trees flaming with gold.

### II

The Green and the Gold, we have loved it of old,  
And to it we will ever be true,  
For the memory will last of the days that are past,  
And linger, dear Hollins, with you.  
For life, when we're young, is a song that is sung,  
And must pass as a tale that is told,  
But honor and praise, to the end of our days,  
We will render the Green and the Gold.

### III

And still at the thought of the good she has wrought,  
Each heart must with gratitude thrill—  
So to Hollins we'll sing till the mountainsides ring,  
Our jewel of woodland and hill.  
There are true, loyal friends that our college life lends,  
And treasures of life manifold,  
And may kind Fortune bless with eternal success  
Our Hollins, the Green and the Gold.

---

### IN 1842

Oh, Hollins people, listen here,  
A song I'll sing to you,  
Of what occurred at this dear place  
In eighteen forty-two-two-two-two.

### CHORUS

Sing, sisters, sing! sisters sing!  
And let old Hollins ring, ring, ring.

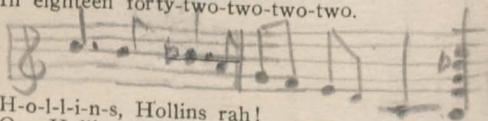
As Mr. Cocke was passing by,  
Said "I'll tell you what I'll do.  
I'll start a school at this dear place  
For boys and girls like you-you-you-you."

So many came the first school year  
Real boys, and not a few;  
But this, dear girls, remember, was  
In eighteen forty-two-two-two-two.



Soon Mr. Cocke real worried got,  
And saw this wouldn't do;  
So "Boys," he said, "you stay away;  
Girls, I'll run this school for you-you-  
you-you."

So many years we've come on here  
Our hearts are always true  
To ideals made and given to us  
In eighteen forty-two-two-two.



H-o-l-l-i-n-s, Hollins rah!  
Our Hollins College, we'll sing to you  
Pride of Virginia's land.  
We love you, yes we do, dear Hollins,  
Long may be cherish thee, love and  
adore,  
Sing, praise and honor, forever more.

I've got a five-pound box of candy,  
And it certainly is dandy.  
Boom Dee Dee; Yum Boom Bay!  
Ever since I got that five-pound box  
Each friend of mine comes 'round,  
And on my door she knocks.  
"Won't you lend me—a tie?" she'll  
sweetly say.  
Boom Dee Dee; Yum Boom;  
Boom Dee Dee; Yum Boom;  
Boom, Boom, Boom, Boom, Bay!

I began with a lot of money,  
And it certainly is funny  
Where that money goes!  
I lost some in Roanoke, I suppose;  
A little went for food,  
And possibly for clothes,  
But the rest has vanished, who knows—  
Where that money—Gee, it's funny!  
Where that money goes!

Oh, see those girls of Hollins  
A-standing in the line,  
And all of them are little friends of  
mine.  
They know just how to work there,  
They know just how to play—  
Oh, Hollins girls, we cheer you every  
time!

#### CHORUS

Now, Sweet Briar's not slow,  
Randolph-Macon's on the go,  
West Hampden's mighty, mighty fine;  
But give us, oh, give us, oh how I wish  
you would  
Our dear old Hollins College every time!



## Our Advertisers

We recommend to your attention our advertisers. They have made this book possible from a financial standpoint, and they have a right to expect some returns for their money. We have been careful to solicit only the reliable firms.

## B. FORMAN & SONS

*Correct Dress for Women*

ROANOKE, VA.

---

Exclusive Wearing Apparel  
for Women

## BOYD SWEENEY COMPANY

*Hardware and Sporting  
Goods*

314 South Jefferson Street

ROANOKE, VA.

## WALK - OVER SHOES

*"The Store of Fitting Service"*

HEADQUARTERS FOR

Women's Military Style and  
Service Shoes

Walk-Over Boot Shop  
ROANOKE, VA.

## Hancock Dry Goods Company, Inc.

*"In the Heart of the Shopping District"*

College girls find Hancock's a convenient place to shop, and we invite *you* to make it *your* store when shopping in Roanoke.

Only dependable merchandise is sold here. Hancock's is the store that sell "Wool-tex" Suits and Coats—also "Gosard" front lace Corsets.

Campbell Avenue, Henry Street, Salem Avenue  
ROANOKE, VA.

VAN LEAR BROTHERS'  
PHARMACY

THE REXALL STORE  
116 WEST CAMPBELL AVENUE

*Agency: Huyler's Fine Candy, Liggett's  
Candy, Symphony Lawn Stationery*

IMPORTED AND DOMESTIC TOILET  
ARTICLES, PERFUMES, ETC.

*IT'S RIGHT AT VAN LEARS'*

ARE YOU HUNGRY?

Drop in for Breakfast,  
Luncheon, or Tea, at

MICHAEL'S TEA ROOM  
305 Heney Street Andros Building  
ROANOKE, VA.

Let Us Finish Your  
Kodak Films

\$6,000 Plant      Twenty Years' Experience

*Write for Free Price List*  
KODAKS, FILMS  
AND SUPPLIES

---

---

*All Kinds of Sporting Goods*  
*such as*  
TENNIS, BASKET-BALL, ETC.

---

---

Victrolas and Records  
GET A \$15 VICTROLA  
This is a Wonderful Little Machine

---

---

*Roanoke Cycle Company*  
103 West Campbell Avenue  
ROANOKE, VA.

You Will Come Again  
if you ever shop one  
time at the

**S. H. Heironimus Company**

Women's Corset Apparel, Accessories  
of Dress, and Dry Goods  
ROANOKE, VA.

**E. S. BECKER'S, Inc.**

The home of Whitman's unsurpassed candies and confections—a dainty package for college girls

Delicious salads, mayonnaise dressing, fancy and plain cakes for "feasts," birthday or other special occasions, prepared by a famous Southern housekeeper and cook.

209 South Jefferson Street  
ROANOKE, VA.

**Roanoke Steam Dye  
Works, Inc.**

1890—1917

Expert Cleaners and Dyers  
of Ladies' and Men's  
Wearing Apparel



PHONE 229  
508 JEFFERSON STREET, SOUTH  
ROANOKE, VA.

## Mutual Premium Parlor

Sodas, Cigars, Cigarettes,  
Candies and Magazines

Mutual Coupon free with  
every purchase

NEXT TO AMERICAN THEATER

## THURMAN & BOONE COMPANY

Extend to the Faculty, Staff, and Students  
of Hollins College the courtesies of  
their entire establishment

MUSIC SALON      REST ROOM

Fine Fittings for the Home  
ROANOKE, VA.

## Rankin Company

Inc.

JEWELERS

Solicit Your Patronage

108 Jefferson Street ROANOKE, VA.

## Spigel's Women's Specialty Shop

*Roanoke's largest  
ready-to-wear  
and millinery shop*

"THE COLLEGE GIRLS' FAVORITE  
SHOPPING CENTER"



I. BACHRACH SHOE  
COMPANY, Inc.

PIONEER SHOE DEALERS

212 South Jefferson Street  
ROANOKE, VA.

The Co-Operative Drug  
Company

College Girls'  
Headquarters for  
Ice Cream, Soda Water  
Candies, Stationery  
and  
Toilet Articles

Jefferson Street      Roanoke, Va.

Brand -

