



University of Kentucky  
UKnowledge

Entomology Faculty Publications

Entomology

3-14-2017

# Photosynthetic Bacterium *Rhodopseudomonas palustris* GJ-22 Induces Systemic Resistance Against Viruses

Pin Su

*Hunan Academy of Agricultural Sciences, China*

Xinqiu Tan

*Hunan Academy of Agricultural Sciences, China*

Chenggang Li

*Hunan Academy of Agricultural Sciences, China*

Deyong Zhang


*Hunan Academy of Agricultural Sciences, China*

Ju'e Cheng

*Hunan Academy of Agricultural Sciences, China*

*See next page for additional authors*

Follow this and additional works at: [https://uknowledge.uky.edu/entomology\\_facpub](https://uknowledge.uky.edu/entomology_facpub)

 Part of the [Bacteria Commons](#), [Entomology Commons](#), [Microbiology Commons](#), [Plants Commons](#), and the [Viruses Commons](#)

## Repository Citation

Su, Pin; Tan, Xinqiu; Li, Chenggang; Zhang, Deyong; Cheng, Ju'e; Zhang, Songbai; Zhou, Xuguo; Yan, Qingpin; Peng, Jing; Zhang, Zhuo; Liu, Yong; and Lu, Xiangyang, "Photosynthetic Bacterium *Rhodopseudomonas palustris* GJ-22 Induces Systemic Resistance Against Viruses" (2017). *Entomology Faculty Publications*. 135.  
[https://uknowledge.uky.edu/entomology\\_facpub/135](https://uknowledge.uky.edu/entomology_facpub/135)

This Article is brought to you for free and open access by the Entomology at UKnowledge. It has been accepted for inclusion in Entomology Faculty Publications by an authorized administrator of UKnowledge. For more information, please contact [UKnowledge@lsv.uky.edu](mailto:UKnowledge@lsv.uky.edu).

---

**Authors**

Pin Su, Xinqiu Tan, Chenggang Li, Deyong Zhang, Ju'e Cheng, Songbai Zhang, Xuguo Zhou, Qingpin Yan, Jing Peng, Zhuo Zhang, Yong Liu, and Xiangyang Lu

**Photosynthetic Bacterium *Rhodospseudomonas palustris* GJ-22 Induces Systemic Resistance Against Viruses****Notes/Citation Information**

Published in *Microbial Biotechnology*, v. 10, issue 3, p. 612-624.

© 2017 The Authors. *Microbial Biotechnology* published by John Wiley & Sons Ltd and Society for Applied Microbiology.

This is an open access article under the terms of the [Creative Commons Attribution](#) License, which permits use, distribution and reproduction in any medium, provided the original work is properly cited.

**Digital Object Identifier (DOI)**

<https://doi.org/10.1111/1751-7915.12704>

# Photosynthetic bacterium *Rhodopseudomonas palustris* GJ-22 induces systemic resistance against viruses

Pin Su,<sup>1</sup> Xinqiu Tan,<sup>1</sup> Chenggang Li,<sup>1</sup> Deyong Zhang,<sup>1</sup> Ju'e Cheng,<sup>1</sup> Songbai Zhang,<sup>1</sup> Xuguo Zhou,<sup>2</sup> Qingpin Yan,<sup>1</sup> Jing Peng,<sup>1</sup> Zhuo Zhang,<sup>1</sup> Yong Liu<sup>1,\*</sup> and Xiangyang Lu<sup>3,\*</sup>

<sup>1</sup>Hunan Academy of Agricultural Sciences, Hunan Plant Protection Institute, Changsha 410125, China.

<sup>2</sup>Department of Entomology, University of Kentucky, Lexington, KY 40546, USA.

<sup>3</sup>College of Bioscience and Biotechnology, Hunan Agricultural University, Changsha 410128, China.

## Summary

Photosynthetic bacteria (PSB) have been extensively used in agriculture to promote plant growth and to improve crop quality. Their potential application in plant disease management, however, is largely overlooked. In this study, the PSB strain *Rhodopseudomonas palustris* GJ-22 was investigated for its ability to induce resistance against a plant virus while promoting plant growth. In the field, a foliar spray of GJ-22 suspension protected tobacco plants against tobacco mosaic virus (TMV). Under axenic conditions, GJ-22 colonized the plant phyllosphere and induced resistance against TMV. Additionally, GJ-22 produced two phytohormones, indole-3-acetic acid and 5-aminolevulinic acid, which promote growth and germination in tobacco. Furthermore, GJ-22-inoculated plants elevated their immune response under subsequent TMV infection. This research may give

rise to a novel biological agent with a dual function in disease management while promoting plant growth.

## Introduction

Disease resistance can be induced and enhanced by previous exposure to biotic or abiotic stimulus (Conrath *et al.*, 2006). This process is called priming, and primed plants systemically initiate rapid and robust defence responses upon future challenges (Pastor *et al.*, 2013). Based on the nature of the eliciting agents and the subsequent biochemical responses, induced resistance is categorized into systemic acquired resistance (SAR) and induced systemic resistance (ISR). Induced by prior necrotrophic pathogen attack, SAR depends on the salicylic acid (SA)-inducible defence mechanism (Vallad and Goodman, 2004). In contrast, ISR is induced by the non-pathogenic microorganisms and depends on the jasmonic acid (JA)/ethylene (ET)-inducible defence mechanism (Derksen *et al.*, 2013). In practical applications, the establishment of SAR is usually mimicked by the exogenous application of synthetic chemicals, such as the functional analogues of salicylate, e.g. benzo (1,2,3) thiazazole-7-carbothioic acid S-methyl ester (BTH) (Vallad and Goodman, 2004). The onset of ISR is generally achieved by the employment of plant growth-promoting bacteria (PGPB) and more commonly by plant growth-promoting rhizobacteria (PGPR), which account for the absolute majority of the extensively studied ISR-inducing strains (Van Loon, 2007). The integration of ISR induction and growth promotion is considered to be a promising avenue for overcoming the fitness cost imposed by chemical inducers (Owen *et al.*, 2014). The superiority of ISR-eliciting PGPB has been notably manifested during glasshouse tests and field trials and has increasingly motivated candidate-strain selection efforts on a worldwide scale (Wang *et al.*, 2014; Berg, 2015). A large spectra of candidate strains have been isolated and characterized for their inducing capacities and amplitudes of protection, but as documented, most of the strains have converged into merely a few families, such as *Bacillus* spp. (Murphy *et al.*, 2000), *Pseudomonas* spp. (Maurhofer *et al.*, 1994) and *Serratia* spp. (Raupach *et al.*, 1996), among others (Vallad and Goodman, 2004).

Received 24 August, 2016; revised 5 February, 2017; accepted 20 February, 2017.

\*For correspondence. E-mail haoasliu@163.com (Y. L.); Tel. +8613974938768; Fax +86073184696578.

and

E-mail xiangyangcn@163.com (X. L.); Tel. +8613607436523; Fax +86073184691176.

*Microbial Biotechnology* (2017) 10(3), 612–624

doi:10.1111/1751-7915.12704

## Funding information

This research was supported by the Special Fund for the Agro-scientific Research in the Public Interest (201303028), the National Science Foundation of China (31272067), the Twelfth Five-year National Support Project of Science and Technology (2014 vBAD05B04-4), Joint Research Fund for Young Scholars in Hunan Province and Hunan Academy of Agricultural Sciences (14JJ6059) and the Agricultural Research System of China (CARS-25-B-05).

While extensive research of ISR-eliciting strains is being conducted among PGPR strains and endophytic bacteria, the potential of photosynthetic bacteria (PSB) has been largely overlooked. A phylogenetically diverse group, PSB, is well known for their wide distribution in water ways and their metabolic versatility, which includes nitrogen and carbon dioxide fixation and desulfurization (Sasikala and Ramana, 1998). Photosynthetic bacteria have been used extensively in agricultural production to promote plant growth and to improve crop quality (Koh and Song, 2007). *R. palustris* is a typical purple non-sulfur photosynthetic bacterium. It produces an array of chemicals, including siderophores, riboflavin, 5-aminolevulinic acid (ALA), extracellular polymeric substances (EPS) and bacterial acyl-homoserine lactone (AHL) (Sasaki *et al.*, 2005), which can trigger ISR in plants (Pieterse, 2009). The wealth of these chemicals in PSB metabolites leads to the speculation that PSB strains may also possess ISR-inducing properties.

Built on this knowledge, we hypothesized that the application of PSB can boost plant immune responses. To examine this hypothesis, we screened our PSB culture collection against tobacco mosaic virus (TMV) on tobacco plants. GJ-22, an isolate with a cypermethrin degradation ability that was previously characterized to be *R. palustris* (Yin *et al.*, 2012), exhibited efficacious control against TMV infection. This result was also verified through field trials. Not surprisingly, under axenic conditions, GJ-22 significantly improved plant growth and seed germination in tobacco plants. This is, at least partially, attributed to the production of IAA and ALA. Moreover, GJ-22-inoculated tobacco seedlings were resistant to TMV infection. To explore the full potential of photosynthetic bacteria in agricultural practices, this research provides the empirical evidences for the future development of a novel biological agent with a dual function in promoting plant growth while controlling pathogenic attacks.

## Results

### *Plant growth and seed germination promotion under axenic conditions*

GJ-22 exhibited the synthesis of both chemicals indole-3-acetic acid (IAA) and 5-aminolevulinic acid (ALA). Under anaerobic conditions, the highest concentration of IAA reached 29.5 mg l<sup>-1</sup> in liquid culture 60 h after inoculation when the IAA precursor tryptophan (3 mM) was added to the culture medium, significantly higher than 14.8 mg l<sup>-1</sup> when IAA precursor was not added, and the concentration remained insignificantly different at the tested times afterwards, indicating a consistent capability for IAA synthesis (Fig. 1A). The ALA concentration dynamic of GJ-22 in liquid culture appeared slightly

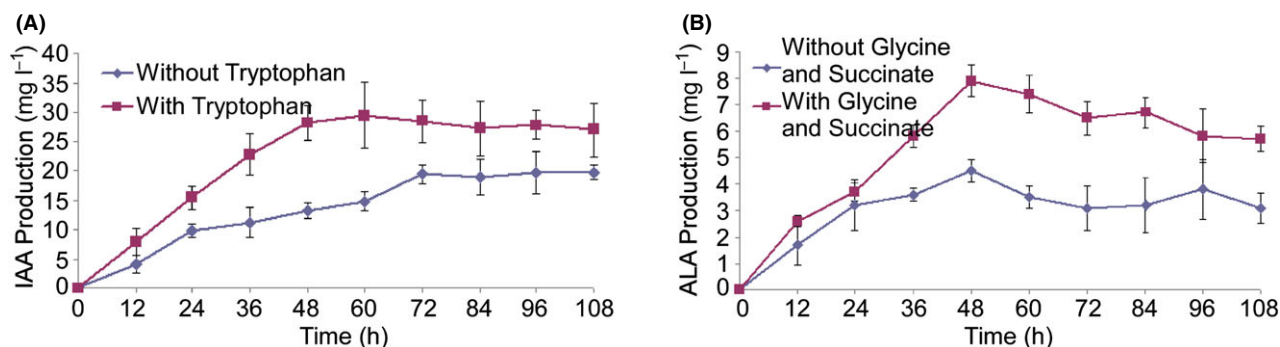
different from that of IAA (Fig. 1B). The highest concentration reached 7.9 mg l<sup>-1</sup> at 48 h after inoculation when the ALA precursors glycine and succinate (15 mM) were added to the culture medium, significantly higher than 4.5 mg l<sup>-1</sup> when ALA precursors were not added. Subsequently, these levels reduced to 5.7 mg l<sup>-1</sup> at 108 h after inoculation. When GJ-22 was cultured without precursor supplements in the culture medium, lower IAA and ALA productions at all testing times were detected compared with the precursor supplement conditions.

The germination of tobacco seeds under axenic conditions was promoted by GJ-22 treatment (Fig. 2A). The seed germination rate in the GJ-22 treatment was 88.9%, which was significantly higher than the rates following treatment with ultrapure water and killed GJ-22, which were 73.8% and 75.8% respectively. No significant difference was found between the ultrapure water and killed GJ-22 treatment conditions.

The root and shoot lengths (Fig. 2B) and dry masses (Fig. 2C) of the plants treated with the GJ-22 suspension and the chemical-supplemented GJ-22 suspension were significantly higher than those of the plants treated with ultrapure water, the killed GJ-22 suspension and the chemical-supplemented killed GJ-22 suspension. The GJ-22 suspension supplemented with both phytohormone precursors elicited significantly greater growth promotion effects than the GJ-22 suspension alone. The root and shoot length increased 49.5% and 55.4% by GJ-22 suspension, compared with water control. But when GJ-22 suspension was supplemented with chemical precursors, greater root and shoot length increases were resulted compared with water control, which were 104.1% and 101.8% for IAA precursor, and 89.6% and 93.8% for ALA precursors. The same pattern of increases was also observed in terms of dry mass weight. The precursor-supplemented GJ-22 suspension resulted in a greater increase in dry mass than did the GJ-22 suspension treatment alone.

### *Phyllospheric colonization of R. palustris GJ-22*

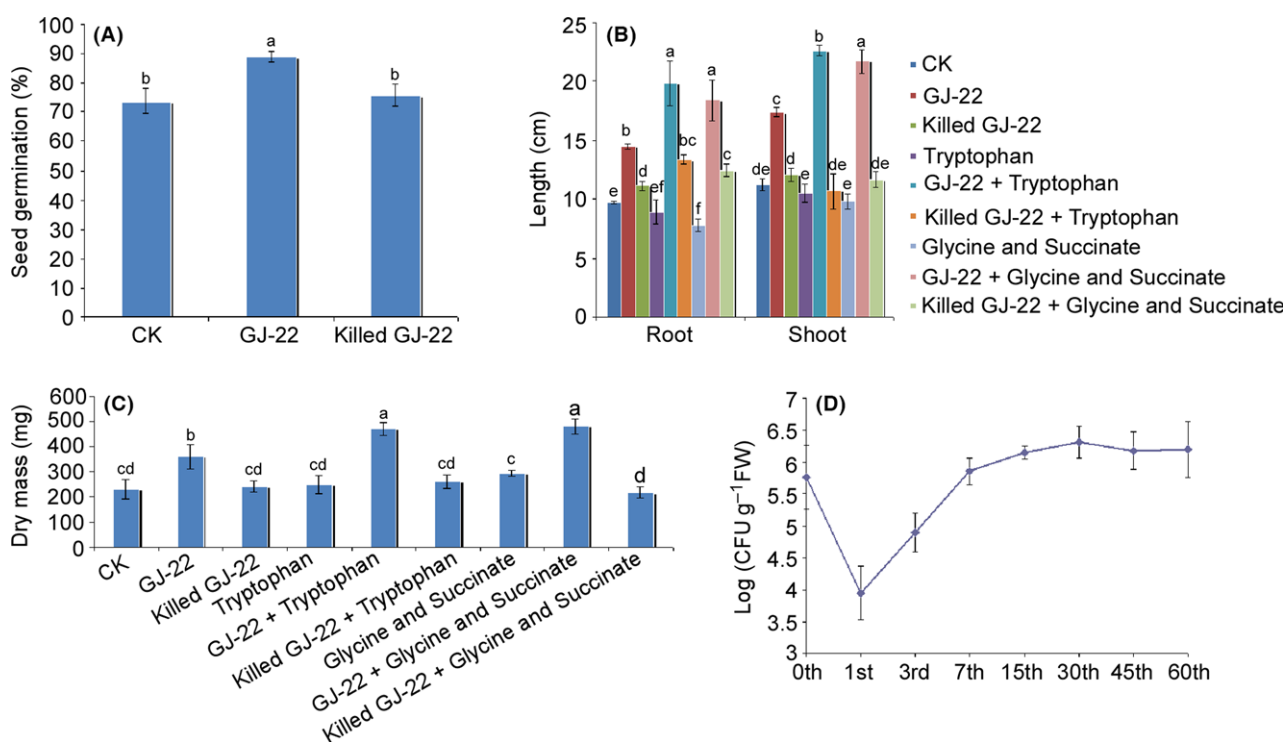
The phyllospheric colonization of GJ-22 was also detected under axenic conditions (Fig. 2D). The GJ-22 suspension was applied to tobacco seedlings as a foliar spray with an inoculation concentration of 6 × 10<sup>7</sup> CFU ml<sup>-1</sup>. Within 24 h, the detected foliar population of fresh leaves dropped drastically from 5.8 × 10<sup>5</sup> CFU g<sup>-1</sup> to 0.9 × 10<sup>4</sup> CFU g<sup>-1</sup>. Subsequently, progressive restoration of the population was detected within 7 days, and the concentration reached 7.1 × 10<sup>5</sup> CFU g<sup>-1</sup> on the 7th day. The population size remained stable afterwards, and a concentration of 1.6 × 10<sup>6</sup> CFU g<sup>-1</sup> was detected on the 60th day after inoculation.



**Fig. 1.** Production of IAA and ALA by *R. palustris* GJ-22.

A. IAA production from two sets of cultures supplemented with and without the precursor tryptophan.

B. ALA production from two sets of cultures supplemented with and without the precursors glycine and succinate. The values are the mean of the detected concentrations with the standard deviation based on 12 cultures in a representative experiment that was repeated four times with similar results.



**Fig. 2.** Seed germination and growth promotion effect of the phyllospheric colonization of *R. palustris* GJ-22.

A. The seed germination rates of three treatments were calculated based on 100 seeds 7 days after treatment. CK was ultrapure water.

B. The root and shoot lengths of nine treatments were calculated 21 days after treatment.

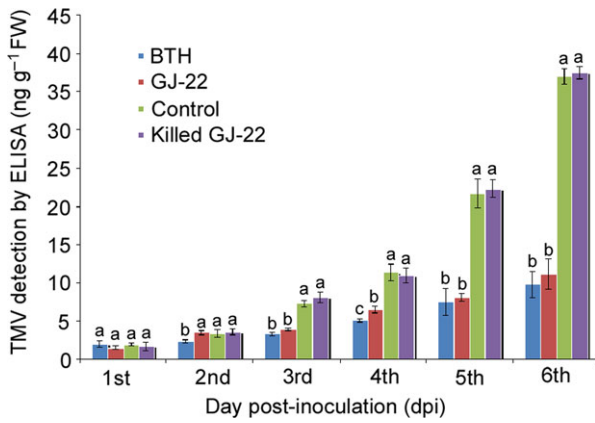
C. The dry mass of each whole plant was assessed after drying at 80°C for 7 days.

D. The phyllospheric colonization of the intrinsically antibiotic-resistant (kanamycin and cycloheximide) strain GJ-22-1 was detected based on one gram of fresh leaf at different time points. The root and shoot length and dry mass data are expressed as the mean values with the standard deviations based on 100 plants in a representative experiment that was repeated four times with similar results. The seed germination rate and phyllospheric colonization data are expressed as the mean values with the standard deviations from four replicates. The different letters within the same data group indicate significant differences between the treatments as determined by Fisher's LSD ( $P = 0.05$ ).

#### Post-challenge immune response assays

**TMV accumulation assay.** TMV accumulation in all treatments increased gradually over time, but faster

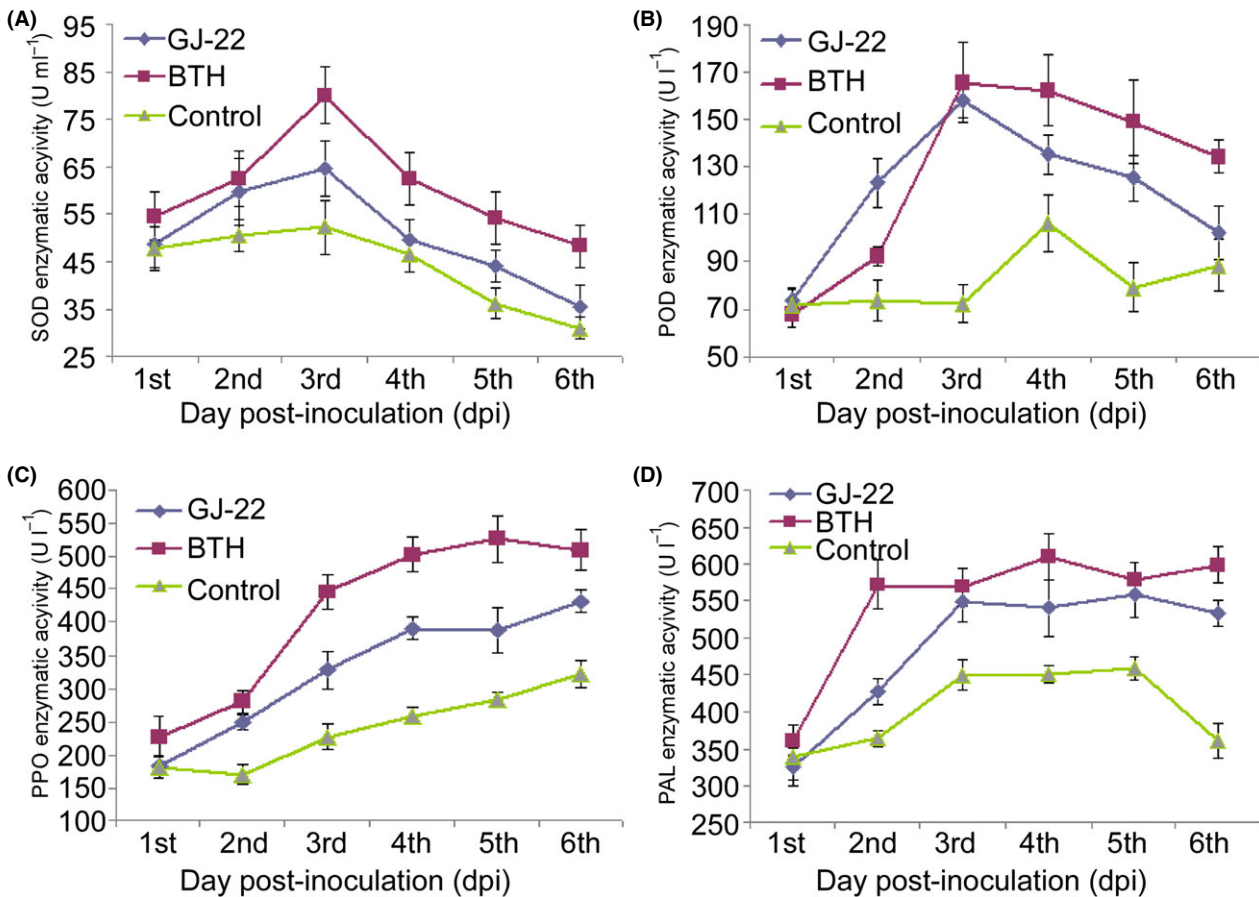
accumulation was detected in the killed GJ-22 and ultrapure water treatment samples (Fig. 3). On the 6th day post-inoculation (dpi), the TMV accumulations were 73.5% and 69.8% lower in the BTH and GJ-22



**Fig. 3.** TMV accumulation in inoculated leaves of *N. benthamiana*. The plants were pre-treated with the indicated treatments before TMV inoculation. The TMV concentration was determined by ELISA. The data are expressed as the mean values with the standard deviations of 12 leaf samples from individual plants. The statistical comparisons are between the different treatments within the same sampling time point. Different letters indicate significant differences using Fisher's LSD ( $P = 0.05$ ).

suspension-treated leaves, respectively, compared with the water control. The TMV accumulations remained non-significantly different between the BTH- and GJ-22-treated leaves at most of the testing time points, suggesting that, similar to BTH-induced SAR, the pattern of protection against TMV resulted from GJ-22 inoculation.

**Defensive enzyme activity assay.** The comparisons of the enzymatic activities were made between the BTH-, GJ-22 suspension- and ultrapure water-treated plants. The enzymatic activities increased more dramatically after TMV inoculation in the BTH- and GJ-22-treated plants. Superoxide dismutase (SOD) activity reached the maximum level on the 3rd dpi in all treated plants, and 53% and 23% higher activities were observed in the BTH- and GJ-22-treated plants, respectively, compared with the activities of the ultrapure water-treated plants on that day (Fig. 4A). The activities then dropped to the minimum on the 6th dpi.



**Fig. 4.** Enhancement of defensive enzyme activity by *R. palustris* GJ-22.

A, B. Activities of the ROS-scavenging enzymes SOD and POD.

C, D. Activities of the pathogenesis-related defensive enzymes PPO and PAL. The plants were pre-treated with the indicated treatments before TMV inoculation. Enzyme activity was determined by ELISA. The data are expressed as the mean values with the standard deviations of 12 leaf samples from individual plants.

A similar trend was observed for peroxidase (POD) activity. The activity reached the maximum level on the 3rd dpi in the BTH and GJ-22 suspension-treated plants but peaked 1 day later in the ultrapure water-treated plants (Fig. 4B). The maximum POD activities were 49% and 55% higher in the BTH- and GJ-22-treated plants, respectively, than the ultrapure water-treated plants. Steadily increasing polyphenol oxidase (PPO) activities over time were observed in all treated plants, but the BTH- and GJ-22-treated plants achieved higher activities than the ultrapure water-treated plants at all testing moments (Fig. 4C).

Phenylalanine ammonia-lyase (PAL) activity reached the maximum level at the 2nd dpi in the BTH-treated plants and on the 3rd day in the GJ-22- and ultrapure water-treated plants (Fig. 4D). Unlike the ultrapure water-treated plants, the BTH- and GJ-22-treated plants maintained high levels of PAL activity after peaking.

**Transcription of defence-related protein genes.** As Fig. 5 illustrates, the transcripts of all of the tested genes with the exception of *NbPDF1.2* appeared detectable earlier in GJ-22- and BTH-treated plants than the ultrapure water-treated plants. In contrast to ultrapure water, GJ-22 advanced the transcript detections of *NbPR3* and *NbRDR6* by 6 h. Specifically, *NbPR1a* and *NbPR5* were detected on the 0th and 6th dpi, respectively, in the GJ-22-treated plants, whereas they remained undetected in the ultrapure water-treated plants until the 18th hour post-inoculation (hpi). Except for *NbPR5*, the transcriptions of the four other tested genes were detected only after TMV inoculation in the GJ-22-treated plants. Except for *NbPR3*, the transcripts of all of the tested genes were detected in the 0th hpi in the BTH-treated plants.

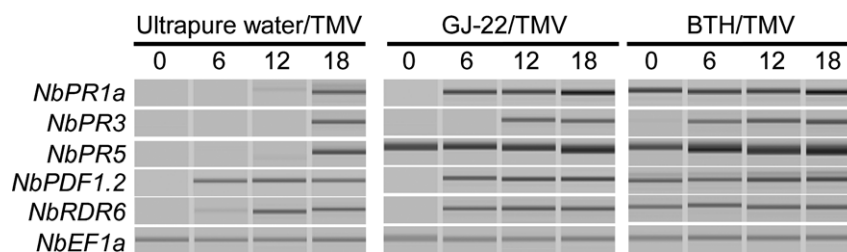
In the GJ-22-treated plants, the JA/ET-responsive genes *NbPR3* (Fig. 6C) and *NbPDF1.2* (Fig. 6D) were upregulated more intensively than in the BTH-treated plants. The significantly higher transcription levels of these two genes were maintained from the 1st to the 6th

dpi in the GJ-22-treated plants. Specifically, on the 3rd dpi for *NbPDF1.2* and the 4th dpi for *NbPR3*, 4.7- and 4.5-fold greater upregulations, respectively, were observed compared with the ultrapure water-treated plants. In contrast, in the BTH-treated plants, significantly greater upregulations were only observed on the first three dpi for *NbPDF1.2* and on the 4th dpi for *NbPR3*. Conversely, the SA-responsive genes *NbPR1a* (Fig. 6A) and *NbPR5* (Fig. 6B) were upregulated in a more vigorous manner by BTH than GJ-22 during the whole time span, although both treatments achieved higher transcription levels of these two genes on the majority of testing days compared with the ultrapure water treatment. For *NbPR1a* in particular, the upregulation began to withdraw on the 4th dpi after peaking on the 3rd dpi in the GJ-22-treated plants and decreased to a non-significant difference relative to the plants treated with ultrapure water. In contrast, this response robustly persisted and remained 15.8-fold higher on the 6th dpi in the BTH-treated plants compared with the ultrapure water-treated plants. A similar pattern contributed by BTH was also observed in the transcription profile of *NbPR5*.

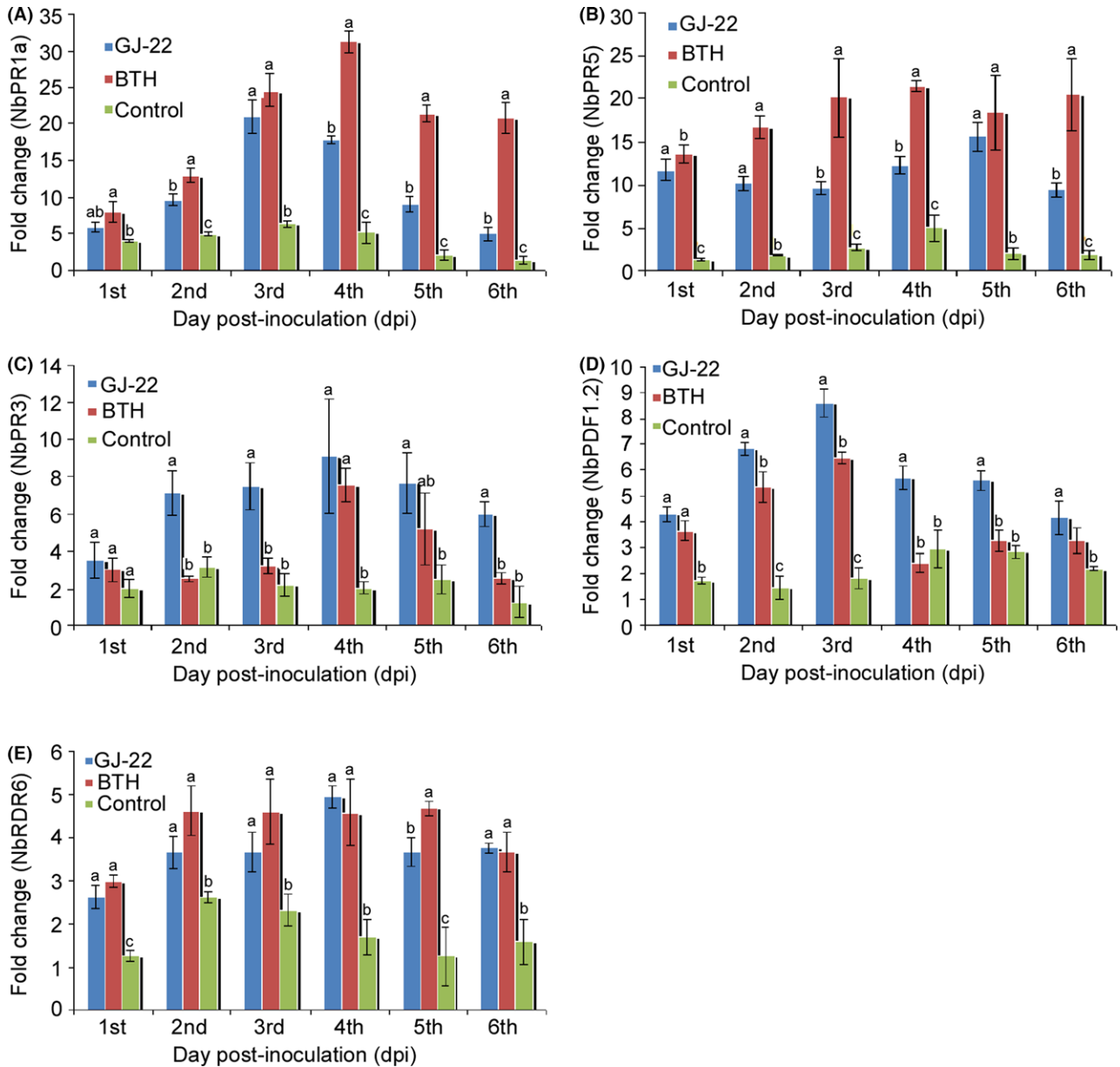
Plant mounts RNA silencing as a basal immune response to stop viruses. In our experiment, *NbRDR6* was upregulated in a quicker and stronger manner in both the GJ-22- and BTH-treated plants compared with the ultrapure water-treated plants (Figs 5 and 6E). The maximum differences in the transcription levels between the plants treated with BTH or GJ-22 and ultrapure water appeared on the 4th and 5th dpi and were 3.7-fold and 2.9-fold higher respectively. Notably, only one significant difference was observed between the GJ-22- and BTH-treated plants. This difference occurred on the 5th dpi and involved the approximate magnitudes of *NbRDR6* upregulation in the two sets of induced plants.

#### Field trials

The biological control efficacy of *R. palustris* GJ-22 against TMV in tobacco was evaluated in a field with



**Fig. 5.** Timings of *NbPR1a*, *NbPR5*, *NbPR3*, *NbPDF1.2* and *NbRDR6* gene transcription in TMV-inoculated leaves of *N. Benthamiana* that were pre-treated with the indicated treatments. The leaves were harvested at the indicated time points for extraction of the total RNA. The transcription levels of the genes were semi-quantified by RT-PCR using *NbEF1a* as an internal reference and then visualized by capillary electrophoresis.



**Fig. 6.** Transcription levels of defence-related genes in TMV-inoculated leaves of *N. benthamiana* that was pre-treated with the indicated treatments. The leaves were harvested at the indicated time points for extraction of the total RNA. A, B. Transcription levels of the *NbPR1a* and *NbPR5* genes, which are associated with the SA-mediated defence pathway. C, D. Transcription levels of the *NbPR3* and *NbPDF1.2* genes, which are associated with the JA/ET-mediated defence pathway. E. Transcription levels of the *NbRDR6* gene, which is associated with the RNA-silencing machinery. The transcription levels of the genes were semi-quantified by RT-PCR using *NbEF-1 $\alpha$*  as an internal reference. The data are expressed as the mean values with the standard deviations. The statistical comparisons are between the different treatments within the same sampling time point. The different letters indicate significant differences using Fisher's LSD ( $P = 0.05$ ).

severe TMV disease occurrence in Changsha (28°11' N, 112°58'4 E), Hunan Province, China, in 2012 and 2013. Four treatments, i.e. BTH (chemical control), GJ-22 suspension (inoculation), autoclaved GJ-22 suspension (killed control) and ultrapure water (blank control), were set with four replicates by a completely randomized design. The seedlings were sprayed to soaking wet with

BTH, GJ-22 suspension and ultrapure water 7 days after transplantation. For the GJ-22 suspension treatment, supplementary sprays were conducted once per day for three consecutive days, and the other two treatments were mocked by ultrapure water sprays. For the BTH treatment, two more supplement sprays were conducted after the first spray at an interval of 20 days. The control



efficacies of BTH and GJ-22 remained non-significantly different in both evaluated years (Table 1). The GJ-22 significantly increased the yields by 29.8% and 31.7% compared with water control, while BTH only resulted in yield increases of 11.5% and 9.8%. Compared with water control, the increases of first-class tobacco in 2 years achieved following GJ-22 inoculation were 27.8% and 39.5%, greater than those following BTH spray, which were 21.8% and 22.6%. There were no significant differences between the killed GJ-22 inoculation and the water control in terms of disease severity and yield.

## Discussion

Viruses cause diseases on all major crops of agronomic importance and cause severe damage in most agriculture areas. Rising concerns regarding food safety and ecological balance make the control of viral diseases particularly challenging. As a strict intracellular pathogen, viral control largely relies on attempts to eradicate insect vectors with the excessive application of pesticides. Additionally, resistance introduced into plants by genetic engineering or conventional breeding can be nullified more easily than that against fungi or bacteria due to the higher genomic plasticity of viruses (Nicaise, 2014). As such, induced resistance conferred by beneficial microorganisms is even more desirable for agricultural practices. Successful exploitation of ISR for the control of viruses, including CMV (cucumber mosaic virus), TMV and ToMoV (tomato mottle virus), has been achieved with many PGPR strains, including *Pseudomonas fluorescens* (Maurhofer *et al.*, 1994), *Serratia marcescens* (Raupach *et al.*, 1996), *Kluyvera cryocrescens* (Zehnder *et al.*, 2000) and *Bacillus* spp. (Murphy *et al.*, 2000). Although induced resistances delivered by microorganisms have been considered attractive and alternative approaches for the control of plant diseases, in part due to their minimal conflict with sustainable agriculture practices, the current drawbacks of these approaches are also sternly addressed by scientists. In practice, agroecosystems are filled with variables derived from plant and pathogen genotypes and environmental conditions (Atehnkeng *et al.*, 2016; Cray *et al.*, 2016). These variables directly influence the outcomes of the disease management desired from biological control agents and thereby complicate efforts to select suitable strains that are able to activate stronger levels of induced resistance or provide maximal protection (Leeman *et al.*, 1995; Ton *et al.*, 1999). However, accumulating evidence suggests that the microorganisms that are currently under scrutiny in terms of their biological control potential are narrowly dominated by a few genera represented by *Pseudomonas* and *Bacillus* (Choudhary and Johri, 2009;

**Table 1.** Effect of *R. palustris* GJ-22 on tobacco disease severity, yield and quality in the field.

| Treatments   | Disease severity (%) |              | Biocontrol efficacy (%) |              | Yield (kg/ha)    |                  | Yield increase (%) |              | Increase of first-class tobacco leaves (%) |              |
|--------------|----------------------|--------------|-------------------------|--------------|------------------|------------------|--------------------|--------------|--|--------------|
|              | 2012                 | 2013         | 2012                    | 2013         | 2012             | 2013             | 2012               | 2013         | 2012                                       | 2013         |
| BTH          | 12.3 ± 0.7 b         | 11.4 ± 0.9 b | 49.8 ± 4.6 a            | 55.8 ± 4.9 a | 2218.4 ± 91.5 b  | 2365.8 ± 94.5 b  | 11.5 ± 1.2 b       | 9.8 ± 0.6 b  | 21.8 ± 2.4 b                               | 22.6 ± 2.7 b |
| GJ-22        | 12.1 ± 0.6 b         | 12.5 ± 0.5 b | 50.6 ± 6.7 a            | 51.6 ± 5.1 a | 2582.5 ± 119.8 a | 2837.6 ± 97.9 a  | 29.8 ± 4.9 a       | 31.7 ± 2.2 a | 27.8 ± 2.6 a                               | 39.5 ± 3.7 a |
| Killed GJ-22 | 22.3 ± 0.3 a         | 23.7 ± 0.4 a | 9.0 ± 0.7 b             | 4.2 ± 0.5 b  | 2015.5 ± 74.6 c  | 2173.9 ± 114.9 c | 1.3 ± 0.2 c        | 0.9 ± 0.1 c  | 3.7 ± 1.4 c                                | 2.5 ± 0.7 c  |
| CK           | 24.5 ± 0.9 a         | 25.8 ± 0.7 a | –                       | –            | 1989.6 ± 87.9 c  | 2154.6 ± 97.5 c  | –                  | –            | –  | –            |

The mean values from four replicates followed by different letters within a column are significantly different between treatments as determined by Fisher's LSD ( $P = 0.05$ ). BTH was applied at the concentration of  $150 \mu\text{g ml}^{-1}$ . GJ-22 was applied at the inoculation density of  $6 \times 10^7 \text{ CFU ml}^{-1}$ . Killed GJ-22 was an autoclaved bacterial suspension with the same density as the GJ-22 treatment. CK was ultrapure water. The data are expressed as the mean values with the standard deviations.

Pieterse, 2009), contradicting the demand for multiple resources of candidate strains with different sets of functional mechanisms that can match the diversity of agro-ecosystems.

Furthermore, the efficacy of resistance-inducing treatments in the field remains the key question. For most PGPR strains, establishing the predominant population in soil environments is often difficult (Javaid, 2006). The successful colonization of PGPR requires suitable environmental conditions in terms of soil composition, suitable pH, available water and mineral and carbon sources in addition to the ability to outperform the native microflora in competitive interactions (Persello-Cartieaux *et al.*, 2003). To overcome these constraints, PGPR formulas are often applied to the soil multiple times, and years of repetitive applications can be necessary to acquire an adequate population size (Ferron and Deguine, 2009). Rather than focusing on rhizospheric bacteria, an increasing number of reports indicate that phyllosphere bacterial communities have profound influences on shaping plant biogeographies and ecosystems (Bodenhausen *et al.*, 2014). Microorganisms in the phyllosphere are believed to play roles in plant health and growth through similar modes of action with PGPR strains, i.e. growth promotion hormone and antibiotic compound production, resource competition and systemic resistance induction (Berg, 2009). However, the plant protection and growth promotion ability of phyllosphere-colonizing bacteria is far less studied than that of rhizosphere-colonizing strains. Recent investigations mainly consist of elucidations of the indigenous bacterial community assemblages in the phyllosphere and their resultant effects on plant traits, whereas the successful introduction of a candidate strain into the phyllosphere, which could positively act on plant growth and defence, has barely been described in the literature (Vorholt, 2012).

As demonstrated in our research, *R. palustris* GJ-22 successfully colonized the phyllosphere and exhibited a growth promotion effect and a virus resistance-inducing capability. The efficiencies of both were comparable with those of reported PGPR applications and the chemical inducer BTH when used as a foliar spray. Unlike the rhizosphere, which usually provides a copiotrophic environment for microorganisms, the phyllosphere seems even more forbidding in terms of the survival of introduced bacteria mainly because, in addition to the other microbes and the plant's own defence mechanism, biological agents also need to survive the ultraviolet radiation from sunlight exposure and the oligotrophic conditions of hydrophobic waxy leaf surfaces that prevent plant water evaporation and nutrient leaching. However, this microbe-unfriendly environment, which makes the establishment of an exogenous bacteria colony

intractable, may turn out to be a goldilocks zone for PSB. Unlike PGPR, which depends on soil nutrients, PSB can grow in a photoautotrophic mode by harvesting light energy and sequestering carbon from carbon dioxide (Simmons *et al.*, 2011). These adaptive traits confer PSB advantages for thriving on the leaf surfaces. This notion was supported by a phyllosphere metagenomic analysis that revealed the presence of a diverse community of anoxygenic phototrophic bacteria (Atamna-Ismaeel *et al.*, 2012). As it reported, individual PSB strains from families, such as *Rhodospseudomonas palustris* and *Rhodobacter sphaeroides*, were delivered onto the phyllosphere and improved the quality and quantity of plant products with remarkable efficiency (Lee *et al.*, 2008). Given that some metabolites of PSB can elicit ISR, PSB strains are a rich reservoir to search for phyllosphere-colonizing biological control agents.

Through our research, an induced resistance of tobacco to TMV by phyllospheric GJ-22 inoculation was defined by the detection of reduced TMV accumulation, enhanced activities of defensive enzymes and the upregulation of PR genes and the RDR gene. However, the signalling pathway activated in tobacco that was responsible for such induced resistance remained elusive. To answer this question, further efforts need to be made, specifically, efforts involving the use of transgenic plants that are impaired in certain signal transductions. Besides, sufficient evidence in the references indicates the possible overlap between RNA silencing pathways and SA signalling pathways (Campos *et al.*, 2014). Therefore, we speculate that the *NbRDR6* upregulation in the BTH-treated plants was attributable to amplified SA signalling. In contrast, there are currently no data available to associate the RNA silencing mechanism with ISR signalling. Considering the *de facto* enhanced resistance against the virus observed in our experiment, it would be interesting to further investigate the underlying mechanism of GJ-22-mediated ISR and its possible correlation with RNA silencing machinery.

In addition, it is also important to mention that the validation of induced resistance simultaneously depends on hormonal signalling and the plant-pathogen system, and in many cases, primed plants could be more susceptible to other type of threats (Derksen *et al.*, 2013). This phenomenon largely results from the fact that cross-talk between signalling pathways can cause suppression or mutual antagonism (Spoel *et al.*, 2007). For example, the JA/ET signalling pathway confers resistance to herbivore damage but incurs susceptibility to foliar speck in the tomato due to the suppressed SA signalling pathway (Thaler, 1999). Therefore, to better integrate PSB into conventional agriculture, in addition to isolating more strains with ISR-eliciting ability, an understanding of the mechanisms responsible for priming and an elucidation

of the complex signalling cascades that characterize the signalling mechanisms that influence the ensuing outcomes of host–pathogen interactions are needed. Ultimately, despite their importance, these goals will remain challenging due to the diversity and variety of the plant–pathogen systems as well as the elusiveness and transiency of some of the signalling molecules involved.

## Materials and methods

### Field trials

The seed culture of *R. palustris* GJ-22 (GenBank Accession Number FJ824030) was incubated in a 250 ml Erlenmeyer flask containing 250 ml of liquid medium, and the flask was manually shaken three to five times per day. A liquid medium containing the following (in g l<sup>-1</sup>) was prepared according to the KOH method with minor modification (Koh and Song, 2007): (NH<sub>4</sub>)<sub>2</sub>SO<sub>4</sub> 0.1, MgSO<sub>4</sub> 0.02, Na<sub>2</sub>CO<sub>3</sub> 0.5, K<sub>2</sub>HPO<sub>4</sub> 0.05, NaCl 0.02 and yeast extract 0.15 (pH = 6.5–7.0). All cultures were incubated under anaerobic conditions at 30°C and 6500 lux in a light incubator (PRX-450D, Hangzhou, China) for 7 days. Five 1 L Erlenmeyer flasks were used to prepare the bacterial suspension. The inoculation volume was 5% (v/v) for each flask, and the incubation time was 7 days. Bacterial cells were pelleted from liquid culture by centrifugation (8000 rpm, 15 min) and re-suspended with ultrapure water. The bacterial suspension was adjusted to the inoculation density of 6 × 10<sup>7</sup> CFU ml<sup>-1</sup>. The SAR-inducing Chemical BTH (Syngenta, Research Triangle Park, NC, USA) was used as the chemical control at the concentration of 150 µg ml<sup>-1</sup> (Friedrich *et al.*, 1996).

*Nicotiana tabacum* L. cv. Samsun NN (harbouring the *N* gene) seeds were germinated on Murashige and Skoog medium plates (Thermo Fisher Scientific, USA) in a growth chamber at 25°C in the dark after surface sterilization using 5% sodium hypochlorite for 15 min and five rinses with ultrapure water. After 14 days, the germinated seeds were then individually transferred to culture pots (10 × 10 × 15 cm) containing pH-balanced peat moss as the base substrate (pH = 5.5–6.5, total N 0.8%; Klasmann-Deilmann GmbH, Geeste, Germany) in a growth chamber. The culture conditions were set at 25 ± 2°C under a 7500 lux fluorescent light intensity with a cycle of 14-h/10-h day/night. After 21 days of cultivation, the tobacco seedlings were evenly transplanted into the experimental plot. Each plot was 100 m<sup>2</sup> (10 × 10 m) and contained 100 tobacco seedlings.

Apart from treatments, normal agronomic practices were applied in the field without any chemical pesticides. On the 90th day after transplantation, the disease index, quality and yield of the tobacco leaves were recorded. All 100 plants in each plot were investigated for the

records. The quality was evaluated as described by Liang *et al.* (2010). The disease index was evaluated based on visual observation and categorized into four levels: 0 = no observed symptoms; 1 = light mottling and a few thin yellow veins; 2 = unevenly distributed mottling and vein clearing on the leaf; 3 = mottling, leaf distortion and stunting; and 4 = severe mottling, leaf curling and stunting. The following equations were used to calculate the disease severity and control efficacy as described by Jiang-Gang Li and Dong-Dong Niu (Li *et al.*, 2011). Disease severity (%) = [Σ (the number of diseased plants in this index × disease index)/(100 × the highest disease index)] × 100. Control efficacy (%) = [(Disease severity of ultrapure water-treated – Disease severity of BTH- or GJ-22-suspension-treated)/(Disease severity of ultrapure water-treated)] × 100.

### Plant growth and seed germination under axenic conditions

*Determination of indole-3-acetic acid and 5-aminolevulinic acid.* The GJ-22 seed culture was inoculated into 250 ml Erlenmeyer flasks containing liquid medium with or without the IAA precursor tryptophan (3 mM) and with or without the ALA precursor glycine and succinate (15 mM). The bacterial supernatants for IAA and ALA quantification were separately sampled from the cultures at the following time points: 0th, 12th, 24th, 36th, 48th, 60th, 72nd, 84th, 96th and 108th hpi. Twelve cultures were sampled at each time point.

The IAA production of GJ-22 was quantified as described by Wong *et al.* (2014) with minor modification. One hundred microlitres of bacterial supernatant from the anaerobic culture and dilutions of standard IAA were individually mixed with the same volume of Salkowski's reagent (150 ml of concentrated H<sub>2</sub>SO<sub>4</sub>, 7.5 ml of 0.5 M FeCl<sub>3</sub>·6H<sub>2</sub>O, 250 ml of distilled water). The mixture was incubated in a 96 well plate at room temperature for 30 min. The appearance of a pink colour in the mixture indicated the existence of indoles. The plate was then read by a microplate spectrophotometer at 530 nm, and the quantity of IAA was determined according to a standard curve prepared with dilutions of standard IAA.

The ALA production of GJ-22 was quantified as described by Mauzerall and Granick (1956) with some modifications. Bacterial supernatant (0.5 ml) from the anaerobic culture and dilutions of standard ALA were individually mixed with 0.5 ml of 1M sodium acetate buffer (pH = 7.4) and 50 µl of acetylacetone. The mixtures were placed in a water bath at 100°C for 15 min. After cooling to room temperature, 100 µl of each mixture was individually added into the same volume of modified Ehrlich's reagent (1 g *p*-dimethylaminobenzaldehyde, 42 ml

of glacial acetic acid, 8 ml of 70% (v/v) perchloric acid) pre-placed in a 96 well plate. The plate was then read by a microplate spectrophotometer at 566 nm, and the quantity of ALA was determined according to a standard curve prepared with dilutions of standard ALA.

*Phyllospheric colonization of R. palustris GJ-22.* Kanamycin and cycloheximide were used to develop the intrinsically antibiotic-resistant strain of GJ-22 (Hameeda *et al.*, 2008). Through increasing concentration gradient culture, strain GJ-22-1 was obtained and exhibited a combinational resistance level to the two antibiotics (kanamycin at the concentration of  $180 \mu\text{g ml}^{-1}$  and cycloheximide at the concentration of  $100 \mu\text{g ml}^{-1}$ ). Strain GJ-22-1 was subcultured 10 times on antibiotic-added plates to stabilize the resistance. To verify the hereditary stability of antibiotic resistance of strain GJ-22-1, it was cultured on plates without the two antibiotics for 25 generations. The obtained strain GJ-22-1 was then cultured on antibiotic-added plates and exhibited similar growth condition with the original strain GJ-22-1. The strain GJ-22-1 was later used in phyllospheric colonization test on tobacco.

After spraying with GJ-22-1 suspension, 12-leaf samples from individual tobacco plants were harvested at seven time points, i.e. the 0th, 1st, 3rd, 7th, 15th, 30th, 45th and 60th day post-inoculation. The leaves collected from each time point were weighed and ground together with ultrapure water. Nine millilitres of ultrapure water for each gram of leaf was used. Ten grams of mixture containing one gram of leaf tissue from each time point was centrifuged to obtain the cell suspension. Serial dilutions of the cell suspension were daubed on a medium plate supplemented with kanamycin and cycloheximide and incubated under the condition described in the enrichment and isolation section. The number of UFCs per gram of fresh leaf was determined after 7 days of incubation.

*Seed germination test. Nicotiana benthamiana* (susceptible to TMV infection) seeds were surface-sterilized and rinsed, and GJ-22 suspension was prepared as described in the field trials section. The seeds were then placed on a filter paper that was sprayed to soaking wet with GJ-22 suspension, autoclaved GJ-22 suspension (killed control) or ultrapure water in a Petri dish. One hundred seeds were evenly laid on each filter paper, and the Petri dishes were placed in a growth chamber at  $25^{\circ}\text{C}$  in the dark. The germination of the tobacco seeds was counted 7 days after the treatments.

*Plant growth test. Nicotiana benthamiana* (susceptible to TMV infection) seedlings were prepared and transferred to culture pots as described in the field experiment

section. After 14 days of cultivation, seedlings with the same growth condition were selected and divided into nine groups for the different treatments, and 100 plants were used for each treatment. These treatments were the following: (i) ultrapure water as the blank control; (ii) GJ-22 suspension as the inoculation group; (iii) autoclaved GJ-22 suspension as the killed control; (iv) GJ-22 suspension + tryptophan; (v) autoclaved GJ-22 suspension + tryptophan; (vi) GJ-22 suspension + glycine and succinate; (vii) autoclaved GJ-22 suspension + glycine and succinate; (viii) tryptophan; and (ix) glycine and succinate. Tryptophan was added to the suspensions at the final concentration of 3 mM as a precursor of IAA. Glycine and succinate were added to the suspensions at the final concentrations of 15 mM as the precursors of ALA. All treatments were applied to the tobacco leaves via a foliar spray to soaking wet. The root and shoot lengths of the plants were measured 21 days after the treatments, and the dry mass of each whole plant was then weighed after drying at  $80^{\circ}\text{C}$  for 7 days.

#### *Post-challenge immune response assays*

*Plants and pathogen. Nicotiana benthamiana* (susceptible to TMV infection) seedlings were prepared with the same method described in the field experiment section. After 14 days of cultivation, healthy seedlings with the same growth condition were selected for the treatments. The TMV U1 strain was propagated and purified from its systemic host *Nicotiana tabacum* cv. Huangmiaoyu as described by Pin Su (Su *et al.*, 2015).

*Treatments and TMV inoculation.* Three treatments, i.e. BTH, GJ-22 suspension and autoclaved GJ-22 suspension, were set at the concentrations as described in the field experiment part, and ultrapure water was set as the blank control. All treatments were applied to the *N. benthamiana* leaves via foliar spray until the leaves were soaking wet. After 7 days of treatment, the tobacco seedlings were subjected to TMV inoculation. The purified TMV particles were diluted to  $1 \mu\text{g ml}^{-1}$  with the PB solution (pH = 7, 0.2 M), and the third leaf of each plant of the different treatments was inoculated with  $20 \mu\text{l}$  of TMV solution by rubbing in the presence of carborundum.

*TMV accumulation and defensive enzyme activity assay.* Enzyme-linked immunosorbent assay (ELISA) was conducted according to the manufacturer's instructions (IBL-America, Minneapolis, Minnesota, USA). Leaves inoculated with TMV particles from the pre-treated plants as described above were collected at the time points of the 1st, 2nd, 3rd, 4th, 5th and 6th day

post-inoculation. Twelve 1 gram fresh leaf tissue samples from each treatment from the different time points were collected from the inoculated leaf. Each gram of fresh leaf tissue was flash-frozen and ground in 1 ml of PBS buffer (pH = 7.4). The ground tissues were centrifuged (8500 rpm, 20 min), and the supernatants were subjected to ELISA. The TMV accumulation and defensive enzyme activities of PAL, PPO, POD and SOD were determined with a microplate spectrophotometer at 450 nm.

**RNA extraction and RT-PCR analysis.** Leaves inoculated with TMV particles were collected for total RNA extraction from the pre-treated plants at the time points of the 0th, 6th, 12th and 18th hours of post-inoculation and the 2nd, 3rd, 4th, 5th and 6th dpi. Four 0.5 g fresh leaf tissue samples from each treatment at the different time points were collected from the inoculated leaf and then flash-frozen in liquid nitrogen for storage at  $-80^{\circ}\text{C}$ . Total RNA was extracted using the MiniBEST plant RNA extraction kit (TaKaRa Biotechnology, Dalian, China). The cDNA was synthesized using PrimeScript™ 1st Strand cDNA synthesis kits (TaKaRa Biotechnology, Dalian, China). The transcript levels of two SA-responsive genes, i.e. *NbPR1a* and *NbPR5*, two JA/ET-responsive genes, i.e. *NbPR3* and *NbPDF1.2*, and one host RNA-dependent RNA polymerase gene, i.e. *NbRDR6*, were semi-quantified using TransStart® Green qPCR SuperMix UDG (TransGen Biotech, Beijing, China) and a PTC-200 Real-Time PCR system (Bio-Rad, Hercules, California, USA). The specific primers for genes were as follows: *NbPR1a*-F: AGGGATCCATGGGATTTGTTCTCTTT, R: AGGAGCTCTTAGTATGGACTTTTCGCC (Lee *et al.*, 2016); *NbPR3*-F: AAAGGGATTCTACAGTTAC, R: AGG ATTGTTTAGCAGGT (Zhu *et al.*, 2014); *NbPR5*-F: TGA GGAGGATGAATAGA, R: AAAGCCTAACAAAGTGC (Zhu *et al.*, 2014); *NbPDF1.2*-F: AACTTGTGAGTCCCAGAG, R: GGATACCTTTCTACCACC (Zhu *et al.*, 2014); and *NbRDR6*-F: CTTTGGATGAGAAGTGCCTA, R: TTTGG GACAAGCTCAAGTC (Qin *et al.*, 2012). *NbEF-1 $\alpha$*  was selected for an internal reference gene, and the following primers were used: *NbEF-1 $\alpha$* -F: TGCCTT GTGGAAGTTTGAGACC, R: GGTGGAGTCAATAATCA GGACAGC (Qin *et al.*, 2012). The primers at the final concentrations of 0.2  $\mu\text{M}$  each and 0.8  $\mu\text{l}$  of cDNA templates were added to 20  $\mu\text{l}$  of total reaction system. The PCR cycling conditions comprised an initial polymerase activation step at  $90^{\circ}\text{C}$  for 5 min followed by 35 cycles of  $95^{\circ}\text{C}$  for 15 s,  $60^{\circ}\text{C}$  for 50 s and  $72^{\circ}\text{C}$  for 1 min. The PCR efficiency for each gene was checked according to the slope of the standard curve generated from the amplification. The target gene expression levels are conveyed as the fold changes in the transcript levels

compared with the reference gene using the comparative  $2^{-\Delta\Delta C_T}$  method. The mean deviation was calculated from the standard deviation (SD) in the  $\Delta\Delta C_T$  value using the formula  $2^{-\Delta\Delta C_T + SD}$ . All reactions were performed in triplicate.

The RT-PCR products of leaf tissues sampled within 24 h post-inoculation were analysed using capillary electrophoresis (QIAxcel; QIAGEN, Germantown, Maryland, USA) to visualize the timing of the upregulation of the defence genes. The target gene expression levels 24 h post-inoculation are presented and compared in bar diagrams.

#### Statistical analysis

All of the data collected in this research were from four experimental repeats. The data are presented as the mean  $\pm$  the standard deviation, and significant differences between the treatments and the controls were determined with analyses of variance using SPSS Statistics 17.0 software (IBM Corp., New York, USA).

#### Acknowledgements

This research was supported by the Special Fund for the Agro-scientific Research in the Public Interest (201303028), the National Science Foundation of China (31272067), the Twelfth Five-year National Support Project of Science and Technology (2014BAD05B04-4), Joint Research Fund for Young Scholars in Hunan Province and Hunan Academy of Agricultural Sciences (14JJ6059) and the Agricultural Research System of China (CARS-25-B-05). The grant agencies had no role in study design, data collection and analysis, the decision to publish or the preparation of this manuscript.

#### Author contributions

YL, PS, XGZ, DYZ, XQT and SBZ designed the experiments and analysed the data. PS, CGL, JP and ZZ performed the experiments. XYL, JEC, QPY and JP contributed reagents/materials. PS wrote the manuscript.

#### Conflict of interest

The authors declare no competing financial interests.

#### References

- Atamna-Ismaeel, N., Finkel, O., Glaser, F., Mering, C.V., Vorholt, J.A., Koblí, M., *et al.* (2012) Bacterial anoxygenic photosynthesis on plant leaf surfaces. *Environ Microbiol Rep* **4**: 209–216.

- Atehnkeng, J., Donner, M., Ojiambo, P.S., Ikotun, B., Augusto, J., Cotty, P.J., and Bandyopadhyay, R. (2016) Environmental distribution and genetic diversity of vegetative compatibility groups determine biocontrol strategies to mitigate aflatoxin contamination of maize by *Aspergillus flavus*. *Microb Biotechnol* **9**: 75–78.
- Berg, G. (2009) Plant–microbe interactions promoting plant growth and health: perspectives for controlled use of microorganisms in agriculture. *Appl Microbiol Biotechnol* **84**: 11–18.
- Berg, G. (2015) Beyond borders: investigating microbiome interactivity and diversity for advanced biocontrol technologies. *Microb Biotechnol* **8**: 5–7.
- Bodenhausen, N., Bortfeld-Miller, M., Ackermann, M., and Vorholt, J.A. (2014) A synthetic community approach reveals plant genotypes affecting the phyllosphere microbiota. *PLoS Genet* **10**: e1004283.
- Campos, L., Granell, P., Tárraga, S., López-Gresa, P., Conejero, V., Bellés, J.M., et al. (2014) Salicylic acid and gentisic acid induce RNA silencing-related genes and plant resistance to RNA pathogens. *Plant Physiol Biochem* **77**: 35–43.
- Choudhary, D.K., and Johri, B.N. (2009) Interactions of *Bacillus* spp. and plants—with special reference to induced systemic resistance (ISR). *Microbiol Res* **164**: 493–513.
- Conrath, U., Beckers, G.J., Flors, V., Garcíaagustín, P., Jakab, G., Mauch, F., et al. (2006) Priming: getting ready for battle. *Mol Plant Microbe Interact* **19**: 1062–1071.
- Cray, J.A., Connor, M.C., Stevenson, A., Houghton, J.D.R., Rangel, D.E.N., Cooke, L.R., and Hallsworth, J.E. (2016) Biocontrol agents promote growth of potato pathogens depending on environmental conditions. *Microb Biotechnol* **9**: 330–354.
- Derksen, H., Rampitsch, C., and Daayf, F. (2013) Signaling cross-talk in plant disease resistance. *Plant Sci* **207**: 79–87.
- Ferron, P., and Deguine, J.P. (2009) Crop Protection, Biological Control, Habitat Management and Integrated Farming. *Springer, Netherlands* **25**: 17–24.
- Friedrich, L., Lawton, K., Ruess, W., Masner, P., Specker, N., Rella, M.G., et al. (1996) A benzothiadiazole derivative induces systemic acquired resistance in tobacco. *Plant J* **10**: 61–70.
- Hameeda, B., Harini, G., Rupela, O.P., Wani, S.P. and Reddy, G. (2008) Growth promotion of maize by phosphate-solubilizing bacteria isolated from composts and macrofauna. *Microbiol Res* **163**: 234–242.
- Javaid, A. (2006) Foliar application of effective microorganisms on pea as an alternative fertilizer. *Agron Sustain Dev* **26**: 257–262.
- Koh, R.H., and Song, H.G. (2007) Effects of application of *Rhodopseudomonas* sp. on seed germination and growth of tomato under axenic conditions. *J Microbiol Biotechnol* **17**: 1805–1810.
- Lee, K.H., Koh, R.H., and Song, H.G. (2008) Enhancement of growth and yield of tomato by *Rhodopseudomonas* sp. under greenhouse conditions. *J Microbiol* **46**: 641–646.
- Lee, W.-S., Fu, S.-F., Li, Z., Murphy, A.M., Dobson, E.A., Garland, L., et al. (2016) Salicylic acid treatment and expression of an RNA-dependent RNA polymerase 1. *BMC Plant Biol* **16**: 15.
- Leeman, M., Javan, P., Hendrickx, M.J., Scheffer, R.J., Pahn, B., and Schippers, B. (1995) Biocontrol of Fusarium wilt of radish in commercial greenhouse trials by seed treatment with *Pseudomonas fluorescens* WCS374. *Phytopathology* **85**: 1301–1305.
- Li, J.G., Cao, J., Sun, F.F., Niu, D.D., Yan, F., Liu, H.X., and Guo, J.H. (2011) Control of Tobacco mosaic virus by PopW as a result of induced resistance in tobacco under greenhouse and field conditions. *Phytopathology* **101**: 1202–1208.
- Liang, Y.P., Liu, J., Wang, S.X., Wang, R.Z., Xia, S.T., and Hong, Y.H. (2010) Leaf quality characteristics of different varieties of flue-cured tobacco. *Hunan Agric Sci* **9**: 19–21.
- Maurhofer, M., Hase, C., Meuwly, P., Metraux, J.P., and Defago, G. (1994) Induction of systemic resistance of tobacco necrosis virus by the root-colonizing *Pseudomonas fluorescens* strain CHA0: influence of the gacA gene and of pyoverdine production. *Phytopathology* **84**: 139–146.
- Mauzerall, D. and Granick, S. (1956) The occurrence and determination of delta-amino-levulinic acid and porphobilinogen in urine. *J Biol Chem* **219**: 435–446.
- Murphy, J.F., Zehnder, G.W., Schuster, D.J., Sikora, E.J., Polston, J.E., and Kloepper, J.W. (2000) Plant growth-promoting rhizobacterial mediated protection in tomato against tomato mottle virus. *Plant Dis* **84**: 2637–2643.
- Nicaise, V. (2014) Crop immunity against viruses: outcomes and future challenges. *Front Plant Sci* **5**: 26–36.
- Owen, D., Williams, A.P., Griffith, G.W., and Withers, P.J.A. (2014) Use of commercial bio-inoculants to increase agricultural production through improved phosphorus acquisition. *Appl Soil Ecol* **86**: 41–54.
- Pastor, V., Luna, E., Mauch-Mani, B., Ton, J., and Flors, V. (2013) Primed plants do not forget. *Environ Exp Bot* **94**: 46–56.
- Persello-Cartieaux, F., Nussaume, L., and Robaglia, C. (2003) Tales from the underground: molecular plant–rhizobacteria interactions. *Plant, Cell Environ* **26**: 189–199.
- Pieterse, C.M.J. (2009) Rhizobacteria-induced systemic resistance. *Adv Bot Res* **51**: 223–281.
- Qin, C., Shi, N., Gu, M., Zhang, H., Li, B., Shen, J., et al. (2012) Involvement of RDR6 in short-range intercellular RNA silencing in *Nicotiana benthamiana*. *Sci Rep-UK* **2**: 254–258.
- Raupach, G.S., Liu, L., Murphy, J.F., Tuzun, S., and Kloepper, J.W. (1996) Induced systemic resistance in cucumber and tomato against cucumber mosaic cucumovirus using plant growth-promoting rhizobacteria (PGPR). *Plant Dis* **80**: 891–894.
- Sasaki, K., Watanabe, M., Suda, Y., Ishizuka, A., and Noparatnaraporn, N. (2005) Applications of photosynthetic bacteria for medical fields. *J Biosci Bioeng* **100**: 481–488.
- Sasikala, C., and Ramana, C.V. (1998) Biodegradation and metabolism of unusual carbon compounds by anoxygenic phototrophic bacteria. *Adv Microb Physiol* **39**: 339–377.
- Simmons, S.S., Isokpehi, R.D., Brown, S.D., McAllister, D.L., Hall, C.C., McDuffy, W.M., et al. (2011) Functional annotation analytics of *Rhodopseudomonas palustris* genomes. *Bioinform Biol Insights* **5**: 115–129.
- Spoel, S.H., Johnson, J.S., and Dong, X. (2007) Regulation of tradeoffs between plant defenses against pathogens

- with different lifestyles. *Proc Natl Acad Sci USA* **104**: 18842–18847.
- Su, P., Feng, T., Zhou, X., Zhang, S., Yu, Z., Cheng, J.E., et al. (2015) Isolation of Rhp-PSP, a member of YER057c/YjgF/UK114 protein family with antiviral properties, from the photosynthetic bacterium *Rhodospseudomonas palustris* strain JSC-3b. *Sci Rep-UK* **5**: 16121.
- Thaler, J.S. (1999) Induced resistance in agricultural crops: effects of jasmonic acid on herbivory and yield in tomato plants. *Environ Entomol* **28**: 30–37.
- Ton, J., Pieterse, C.M., and Van Loon, L.C. (1999) Identification of a locus in *arabidopsis* controlling both the expression of rhizobacteria-mediated induced systemic resistance (ISR) and basal resistance against *Pseudomonas syringae* pv. tomato. *Mol Plant Microbe Interact* **12**: 56–62.
- Vallad, G.E., and Goodman, R.M. (2004) Systemic acquired resistance and induced systemic resistance in conventional agriculture. *Crop Sci* **44**: 1920–1934.
- Van Loon, L.C. (2007) Plant responses to plant growth-promoting rhizobacteria. *Eur J Plant Pathol* **119**: 243–254.
- Vorholt, J.A. (2012) Microbial life in the phyllosphere. *Nat Rev Microbiol* **10**: 828–840.
- Wang, X., Mavrodi, D.V., Ke, L., Mavrodi, O.V., Yang, M., Thomashow, N.Z., et al. (2014) Biocontrol and plant growth-promoting activity of rhizobacteria from Chinese fields with contaminated soils. *Microb Biotechnol* **8**: 404–418.
- Wong, W.-T., Tseng, C.-H., Hsu, S.-H., Lur, H.-S., Mo, C.-W., Huang, C.-N., et al. (2014) Promoting effects of a single *Rhodospseudomonas palustris* inoculant on plant growth by *Brassica rapa chinensis* under low fertilizer input. *Microbes Environ* **29**: 303–313.
- Yin, L., Li, X., Liu, Y., Zhang, D., Zhang, S., and Luo, X. (2012) Biodegradation of cypermethrin by *Rhodospseudomonas palustris* GJ-22 isolated from activated sludge. *Fresen Environ Bull* **21**: 397–405.
- Zehnder, G.W., Yao, C., Murphy, J.F., Sikora, E.R., and Kloepper, J.W. (2000) Induction of resistance in tomato against cucumber mosaic cucumovirus by plant growth-promoting rhizobacteria. *Biocontrol* **45**: 127–137.
- Zhu, F., Xi, D.H., Yuan, S., Xu, F., Zhang, D.W., and Lin, H.H. (2014) Salicylic acid and jasmonic acid are essential for systemic resistance against tobacco mosaic virus in *Nicotiana benthamiana*. *Mol Plant Microbe Interact* **27**: 567–577.