



University of Kentucky
UKnowledge

Center for Applied Energy Research Faculty Patents

Center for Applied Energy Research

6-18-2019

Method of Development and Use of Catalyst-Functionalized Catalytic Particles to Increase the Mass Transfer Rate of Solvents Used in Acid Gas Cleanup


Leland R. Widger
University of Kentucky

Cameron A. Lippert
University of Kentucky, cameron.lippert@uky.edu

Kunlei Liu
University of Kentucky, kunlei.liu@uky.edu

Right click to open a feedback form in a new tab to let us know how this document benefits you.

Follow this and additional works at: https://uknowledge.uky.edu/caer_patents

 Part of the [Chemical Engineering Commons](#), and the [Materials Science and Engineering Commons](#)

Recommended Citation

Widger, Leland R.; Lippert, Cameron A.; and Liu, Kunlei, "Method of Development and Use of Catalyst-Functionalized Catalytic Particles to Increase the Mass Transfer Rate of Solvents Used in Acid Gas Cleanup" (2019). *Center for Applied Energy Research Faculty Patents*. 55.

https://uknowledge.uky.edu/caer_patents/55

This Patent is brought to you for free and open access by the Center for Applied Energy Research at UKnowledge. It has been accepted for inclusion in Center for Applied Energy Research Faculty Patents by an authorized administrator of UKnowledge. For more information, please contact UKnowledge@lsv.uky.edu.



US010322367B2

(12) **United States Patent**
Widger et al.

(10) **Patent No.:** US 10,322,367 B2
(45) **Date of Patent:** Jun. 18, 2019

(54) **METHOD OF DEVELOPMENT AND USE OF CATALYST-FUNCTIONALIZED CATALYTIC PARTICLES TO INCREASE THE MASS TRANSFER RATE OF SOLVENTS USED IN ACID GAS CLEANUP**

B01J 35/00 (2013.01); *B01J 35/026* (2013.01); *B01J 37/0221* (2013.01); *B01D 2252/2041* (2013.01);

(Continued)

(71) Applicant: **University of Kentucky Research Foundation**, Lexington, KY (US)

(58) **Field of Classification Search**

None

See application file for complete search history.

(72) Inventors: **Leland R. Widger**, Lexington, KY (US); **Cameron A. Lippert**, Lexington, KY (US); **Kunlei Liu**, Lexington, KY (US)

(56) **References Cited**

U.S. PATENT DOCUMENTS

6,974,878 B2 12/2005 Guram et al.

7,244,805 B2 7/2007 Park et al.

(Continued)

(73) Assignee: **UNIVERSITY OF KENTUCKY RESEARCH FOUNDATION**, Lexington, KY (US)

FOREIGN PATENT DOCUMENTS

(*) Notice: Subject to any disclaimer, the term of this patent is extended or adjusted under 35 U.S.C. 154(b) by 0 days.

CN 103566735 A 2/2014

DE 102012020141 A1 4/2014

(Continued)

(21) Appl. No.: **15/429,523**

OTHER PUBLICATIONS

(22) Filed: **Feb. 10, 2017**

Chingombe et al., "Surface modification and characterization of a coal-based activated carbon." Carbon, vol. 43 (2005), pp. 3132-3143.*

(Continued)

(65) **Prior Publication Data**

US 2017/0232380 A1 Aug. 17, 2017

Related U.S. Application Data

(60) Provisional application No. 62/294,663, filed on Feb. 12, 2016.

Primary Examiner — Daniel Berns

(74) *Attorney, Agent, or Firm* — King & Schickli, PLLC

(51) **Int. Cl.**

C07F 19/00 (2006.01)

C07F 3/06 (2006.01)

(Continued)

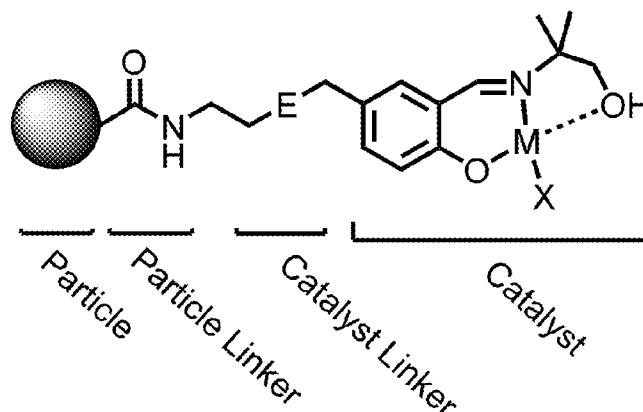
(57) **ABSTRACT**

The present invention relates to methods for improving carbon capture using entrained catalytic-particles within an amine solvent. The particles are functionalized and appended with a CO₂ hydration catalyst to enhance the kinetics of CO₂ hydration and improve overall mass transfer of CO₂ from an acid gas.

(52) **U.S. Cl.**

CPC *B01D 53/1493* (2013.01); *B01D 53/1475* (2013.01); *B01D 53/8671* (2013.01); *B01J 21/06* (2013.01); *B01J 31/2217* (2013.01);

20 Claims, 10 Drawing Sheets



- (51) **Int. Cl.**
C07F 3/08 (2006.01)
C07F 3/10 (2006.01)
C07F 1/08 (2006.01)
C07F 1/10 (2006.01)
C07F 1/12 (2006.01)
C07F 9/00 (2006.01)
C07F 11/00 (2006.01)
C07F 13/00 (2006.01)
C07F 15/00 (2006.01)
C07F 15/02 (2006.01)
C07F 15/04 (2006.01)
C07F 15/06 (2006.01)
B01D 53/14 (2006.01)
B01J 31/22 (2006.01)
B01J 21/06 (2006.01)
B01J 35/00 (2006.01)
B01J 35/02 (2006.01)
B01J 37/02 (2006.01)
B01D 53/86 (2006.01)

- (52) **U.S. Cl.**
 CPC *B01D 2252/20405* (2013.01); *B01D 2252/20415* (2013.01); *B01D 2252/20421* (2013.01); *B01D 2252/20431* (2013.01); *B01D 2252/20442* (2013.01); *B01D 2252/20447* (2013.01); *B01D 2252/20452* (2013.01); *B01D 2252/20484* (2013.01); *B01D 2252/20489* (2013.01); *B01D 2252/20494* (2013.01); *B01D 2252/602* (2013.01); *B01D 2253/102* (2013.01); *B01D 2253/106* (2013.01); *B01D 2255/20746* (2013.01); *B01D 2255/20792* (2013.01); *B01D 2255/30* (2013.01); *B01D 2255/9202* (2013.01); *B01D 2256/24* (2013.01); *B01D 2257/504* (2013.01); *B01D 2258/0283* (2013.01); *B01J 2231/005*

(2013.01); *B01J 2531/26* (2013.01); *B01J 2531/845* (2013.01); *Y02C 10/06* (2013.01)

(56) **References Cited**

U.S. PATENT DOCUMENTS

7,619,093	B2	11/2009	Meiere	
8,394,351	B2	3/2013	Valdez et al.	
8,480,792	B2	7/2013	Yaghi et al.	
8,703,082	B2	4/2014	Svendsen et al.	
8,715,392	B2	5/2014	Liu	
8,962,511	B2	2/2015	Lightstone et al.	
2010/0226841	A1*	9/2010	Thiele	B01D 53/1475 423/234
2012/0064610	A1	3/2012	Vitse et al.	
2012/0216680	A1	8/2012	Vimalchand et al.	
2013/0059987	A1	3/2013	Quantrille et al.	
2013/0108532	A1	5/2013	Idem et al.	
2013/0244305	A1	9/2013	Versteeg et al.	
2013/0259785	A1	10/2013	Vitse et al.	
2013/0260442	A1	10/2013	Vitse	
2014/0194627	A1	7/2014	Brandstadt et al.	
2015/0104367	A1	4/2015	Floyd et al.	

FOREIGN PATENT DOCUMENTS

EP	2551007	A1	1/2013
JP	2012020221	A	2/2012

OTHER PUBLICATIONS

Teng et al., "Viscosity of Aqueous Solutions of N-Methyldiethanolamine and of Diethanolamine." J. Chem. Eng. Data (1994), vol. 39, pp. 290-293.*
 CN103566735—English machine translation.
 EP2551007—English machine translation.
 JP2012020221—English machine translation.
 DE102012020141—English machine translation.

* cited by examiner

FIGURE 1

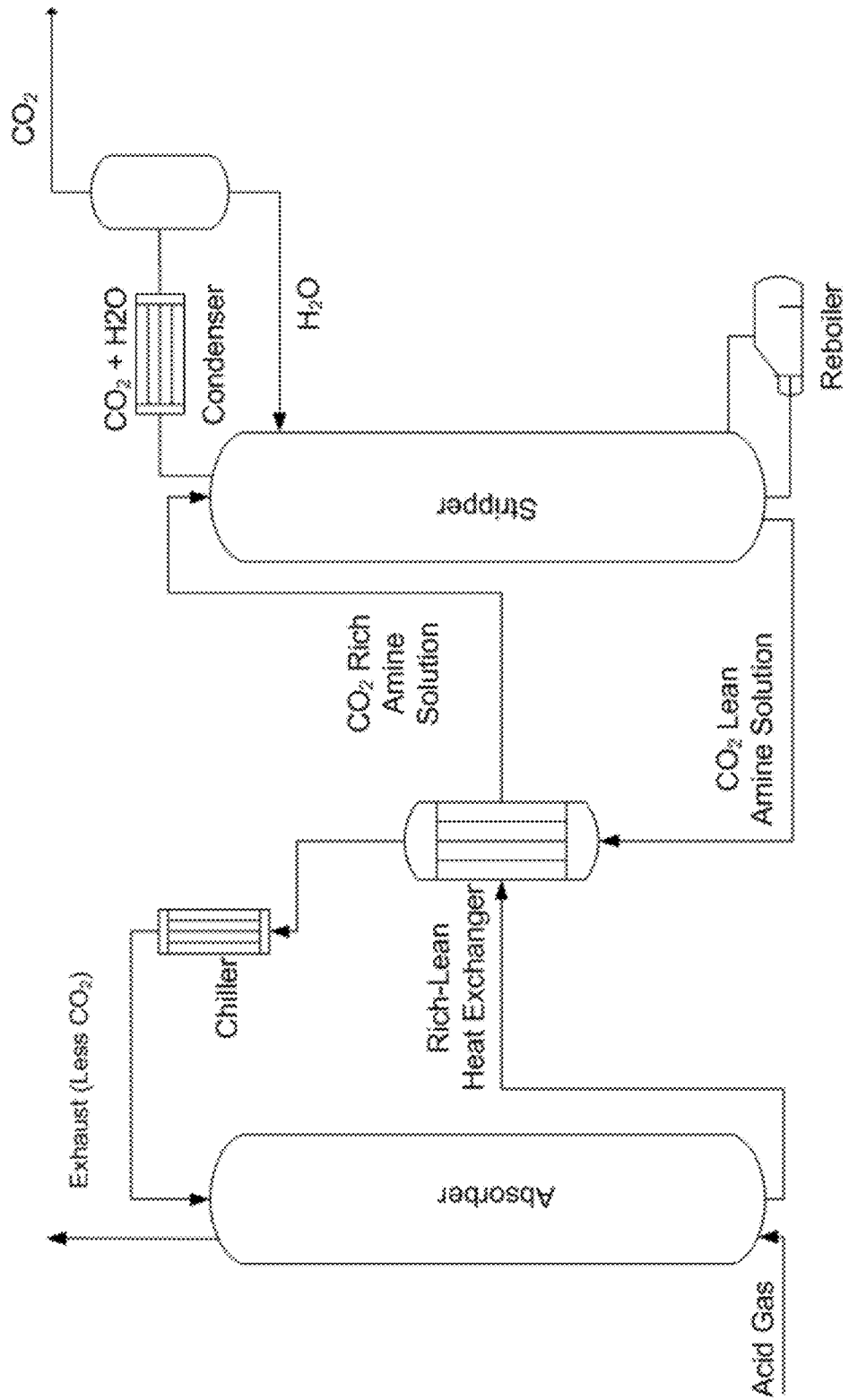
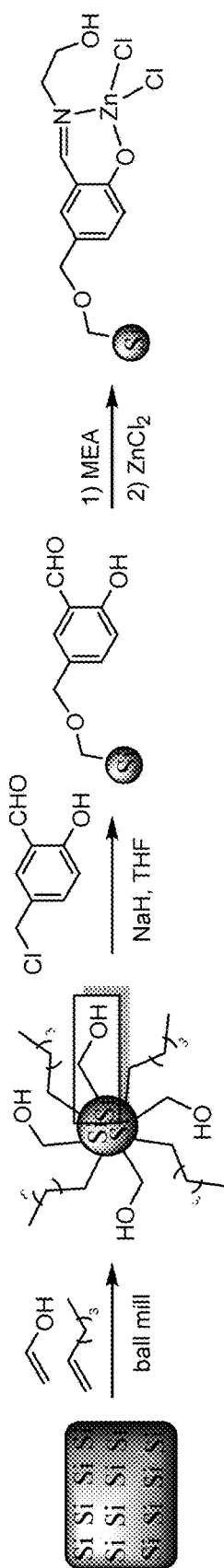


FIGURE 2



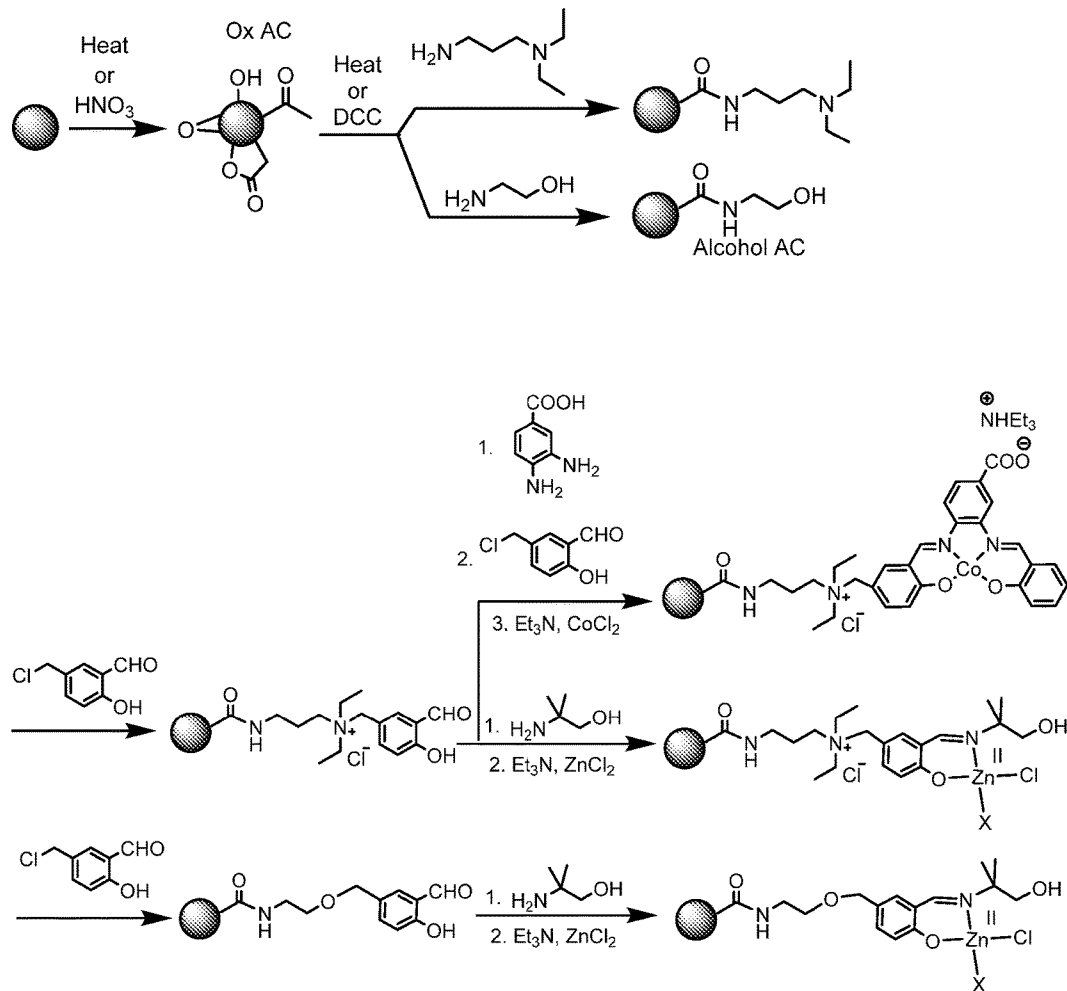


FIGURE 3

FIGURE 4

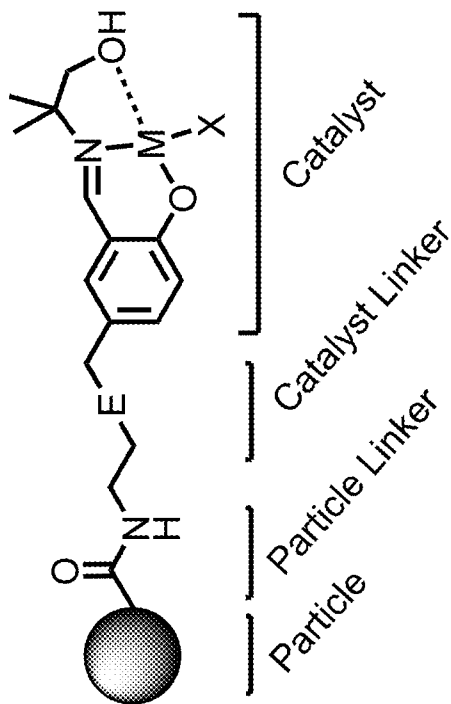


FIGURE 5

Catalytic Si Particles for CO₂ Removal

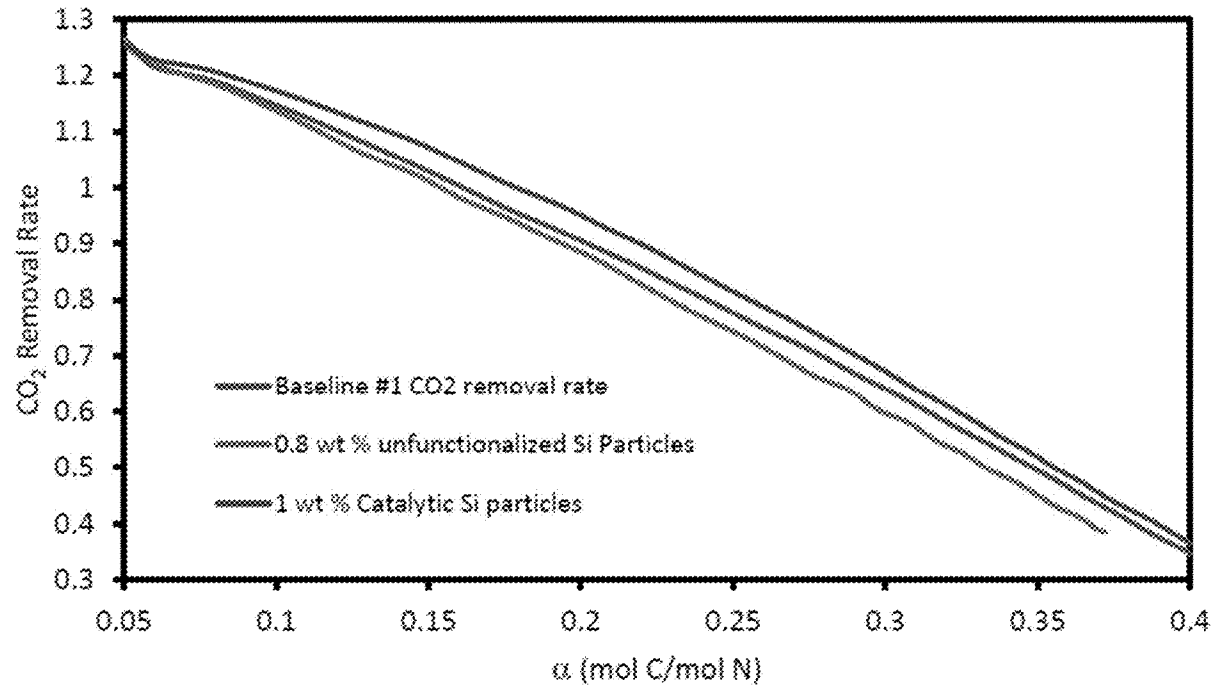
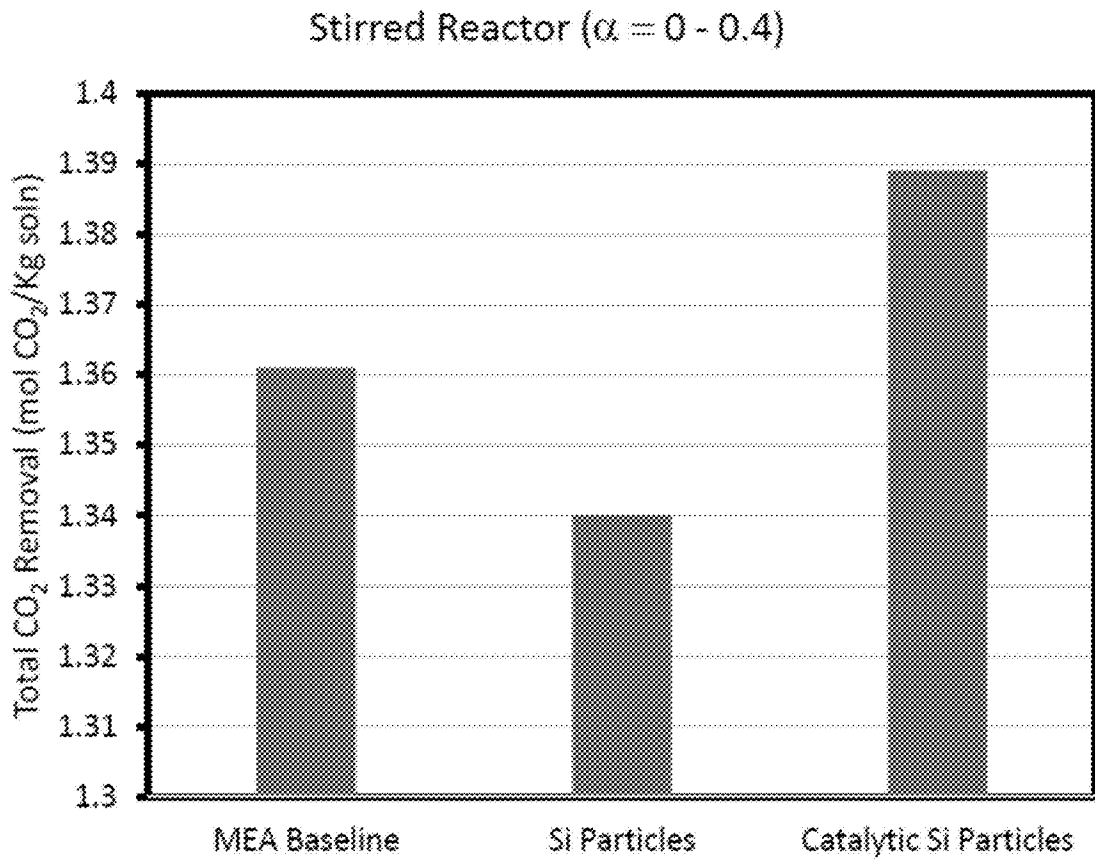


Figure 6



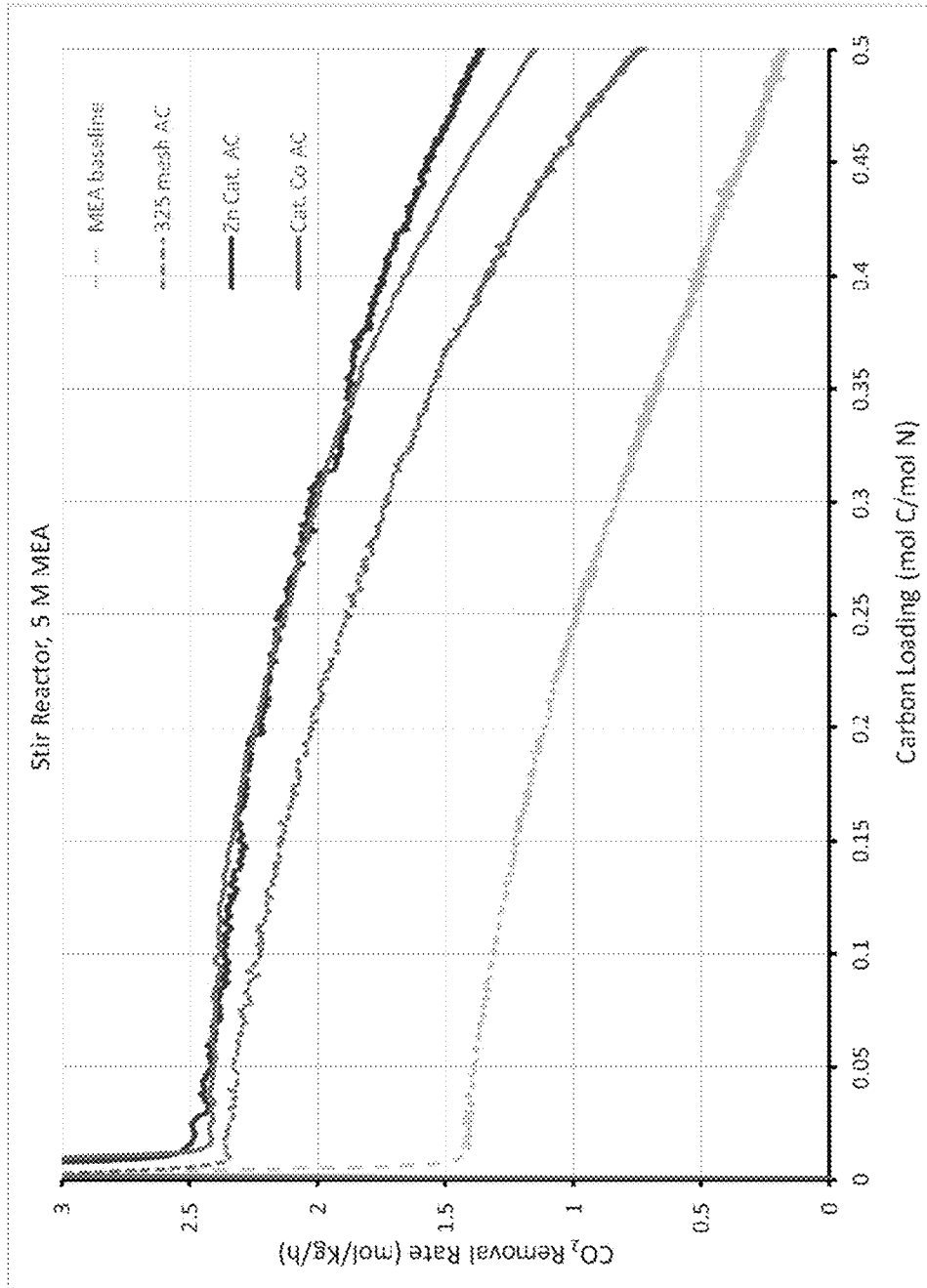


FIGURE 7

FIGURE 8

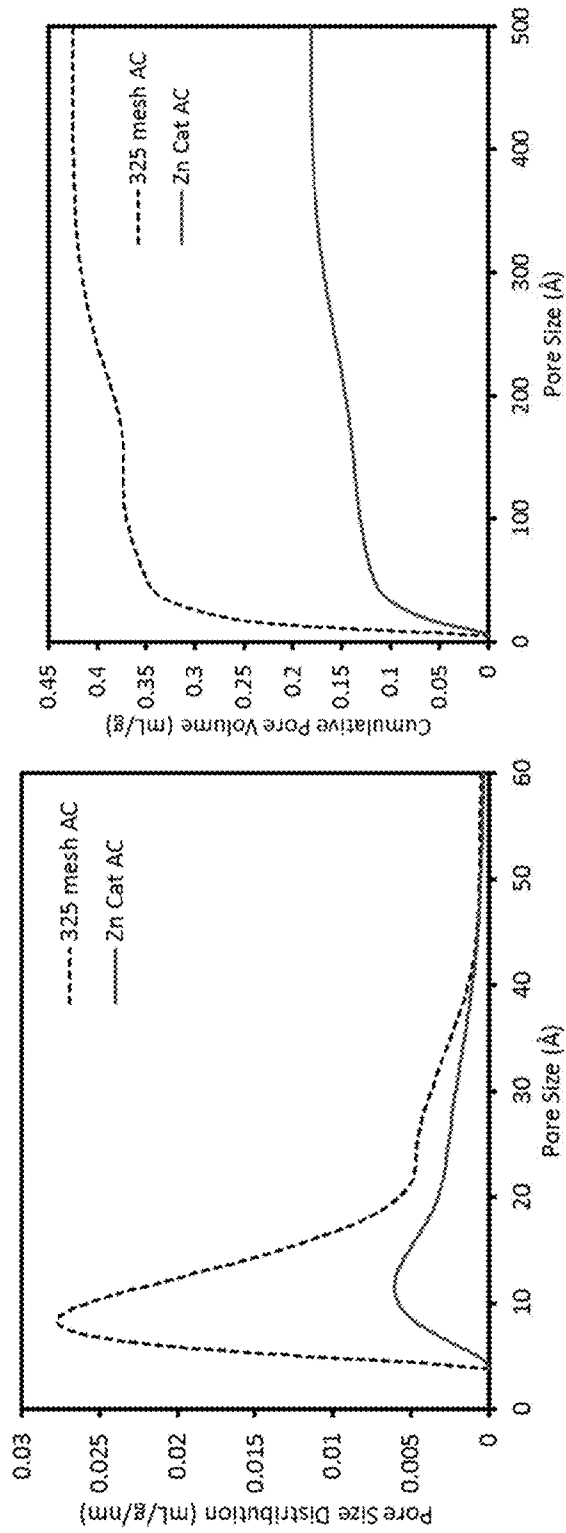


FIGURE 9

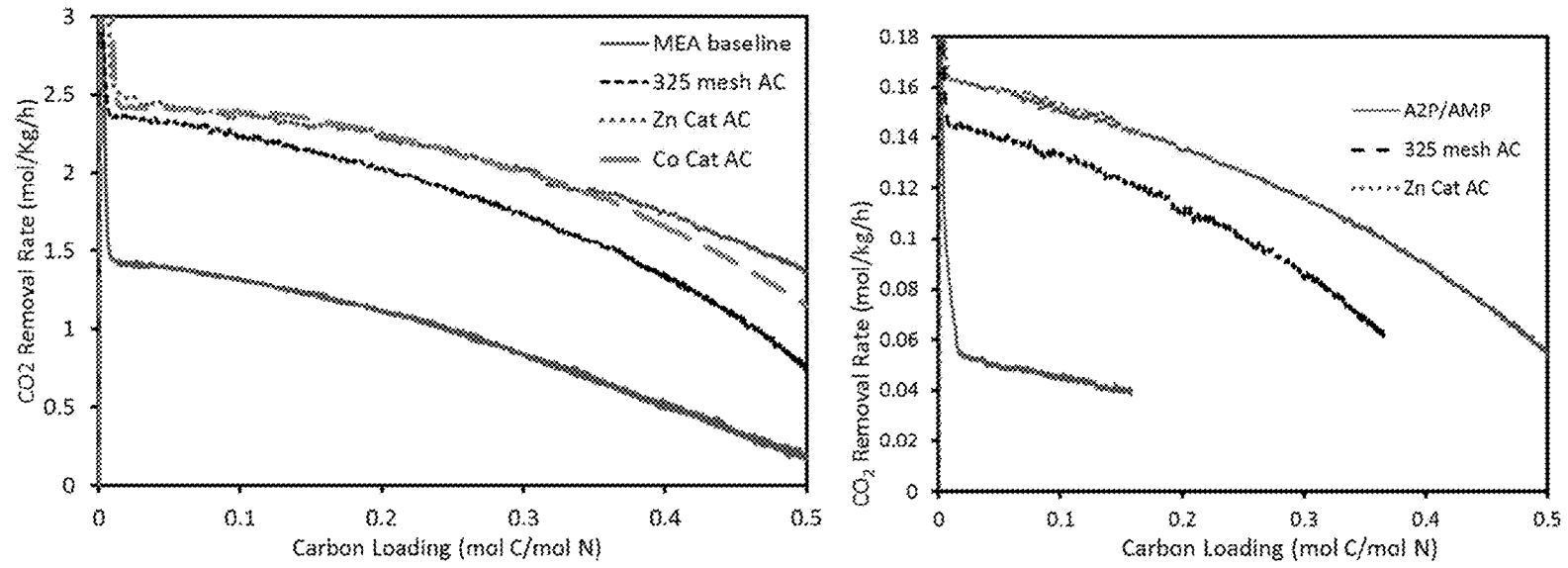
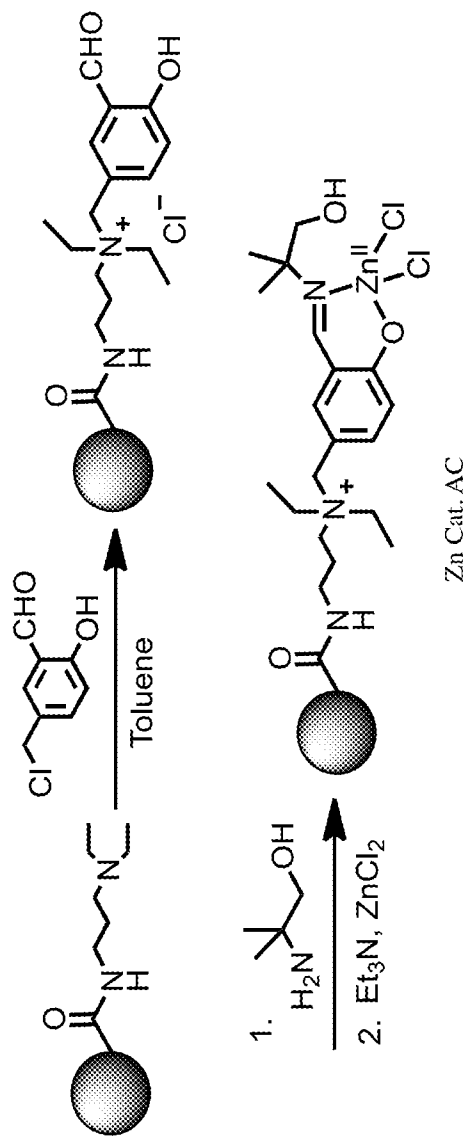


FIGURE 10



1

METHOD OF DEVELOPMENT AND USE OF CATALYST-FUNCTIONALIZED CATALYTIC PARTICLES TO INCREASE THE MASS TRANSFER RATE OF SOLVENTS USED IN ACID GAS CLEANUP

RELATED APPLICATIONS

This application claims priority to U.S. Provisional Patent Application 62/294,663, filed Feb. 12, 2016, which is hereby incorporated by reference in its entirety.

TECHNICAL FIELD

The present invention relates generally to methods for carbon capture using entrained catalytic-particles in liquid solvents.

BACKGROUND

The cleanup of acid gasses, such as CO₂, from natural gas has been an extensively practiced technology. The industrial removal of CO₂ from natural gas dates back to the 1930's. While several technologies exist for the removal of acid gasses, one of the most commonly employed practices is the use of aqueous amines. In this process the amine reacts with the CO₂ to form a carbamate or bicarbonate salt along with a protonated amine to balance the overall charge. The overall process for a thermal swing absorption process is depicted in FIG. 1. Here, the liquid, CO₂ rich amine from the bottom of the absorber, is then passed through a heat exchanger to improve efficiency before being heated to a higher temperature in the stripper. The stripper removes the CO₂ as a gas from the amine solution to produce a lean, or CO₂ deficient solution. The lean solution is returned to the absorber by way of the heat exchanger to repeat the process.

The application of CO₂ capture to post-combustion flue gas separation has recently been an area of major concern. On the long term, it is thought that this technology will be critical to reducing emissions from fossil fuel combustion potentially responsible for climate change. Thus, the market for carbon capture technologies could be enormous with over 1.5 billion tons of CO₂ produced annually from coal combustion in the US alone. In the shorter term Enhanced Oil Recovery (EOR) and utilization in downstream products (polymers or chemicals) represents a significant opportunity for marketing technical solutions. The total market for post-combustion CO₂ capture technologies (>\$6B over the next 20 y) represents massive potential value for intellectual property development sales such as from technology development or licensing fees.

With continued societal and regulatory concern over the global climate change, the market has been driving the post-combustion capture technology development towards commercial scale. However, the technology is still in principle inefficient and energy intensive. One challenge is that the flue gas from fossil fuel boilers is at near atmospheric pressure and the concentration of CO₂ is relatively low at 12-14%, thus, huge gas flow rate and large scale of absorber would cause high capital cost. Another technical hurdle is the energy penalty associated with the CO₂ capture and solvent regeneration which could generally reduce a pulverized coal plant's output by around 30%, which equates to a very significant 60-80% increase in the electricity cost.

SUMMARY OF THE INVENTION

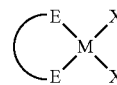
The present invention provides a biphasic scrubbing solution comprising an amine solvent with particles suspended

2

therein, the particles having a surface-appended carbonic anhydrase mimic catalyst. In some embodiments, the particles have a width of less than about 500 microns. In other embodiments, the particles are hydrophobic. In further embodiments, the particles are activated carbon or silicon.

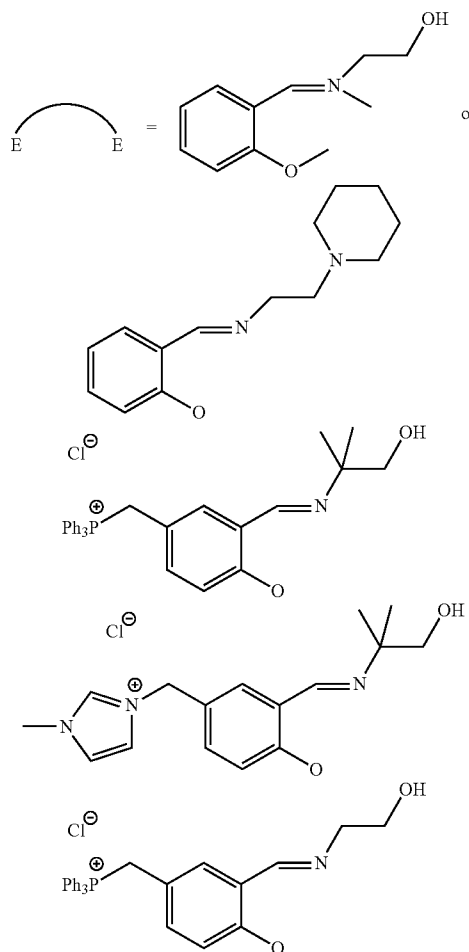
In some embodiments, the particles are functionalized to increase positive zeta potential, such as by oxidation. Particles may also be functionalized by appending with a functional group selected from the group consisting of an alcohol, a primary amine, a tertiary amine, and an amino silane. In instances where the particle is silicon, functionalization may be achieved by ball milling in the presence of an alkene.

The surface-appended carbonic anhydrase mimic catalyst may comprise a bidentate transition-metal ligand complex, such as the structure:

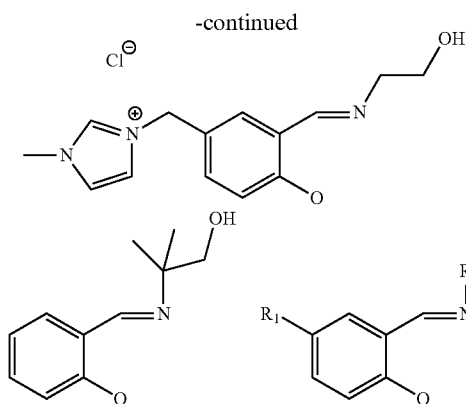


where:

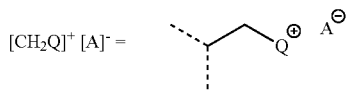
- (a) M is any group VII B through XII B element;
- (b) x=neutral sigma donor or monovalent anion; and
- (c)



3

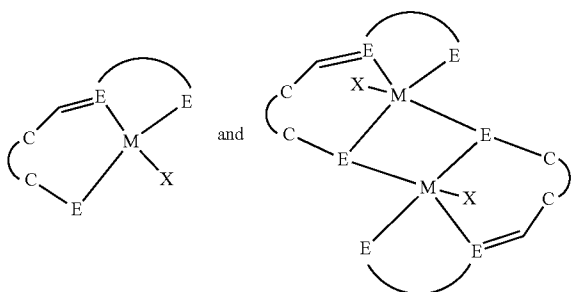


R₁=H, any alkyl, RCOOH (R=alkyl ranging from 0-10 carbons); OligoPEG, phosphate, ROH (R=alkyl ranging from 0-5 carbons), —[OCH₂CH₂] repeats; OH; SO₃; NO₂; amine, amide, carbonyl Cl, Br, I, F, BH₃, [CH₂Q]⁺[A]⁻; and



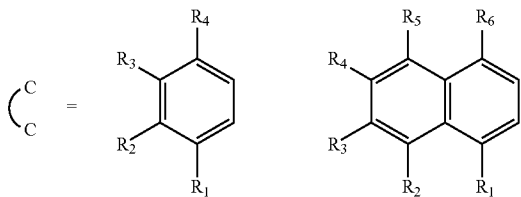
where A=monovalent anion: Cl, Br, I, F, PF₆, BF₄, acetate, trifluoroacetate, ClO₄, NO₃, and Q=monovalent cation: P(R)₃, R=alkyl, cyclic alkyl, Aryl, O-alkyl, O-Aryl; and N(R)₃, R=alkyl, cyclic alkyl, N-heterocyclic ring, imidazole; and R₂=CE; where C=any alkyl, cyclic alkyl, aryl, and E=OH, NH₂, N(R)₃, R=alkyl, cyclic alkyl, N-heterocyclic ring, imidazole, morpholine.

The bidentate transition-metal ligand complex may also comprise a structure selected from:

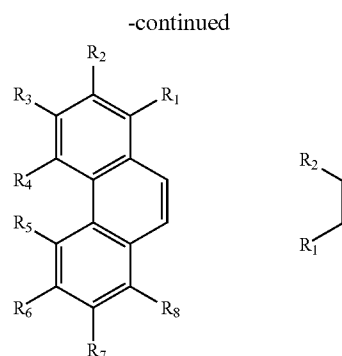


where:

- (a) M is any group VII B through XII B element;
- (b) x=neutral sigma donor or monovalent anion;
- (c)



4



where R₁=H, any alkyl, RCOOH (R=alkyl ranging from 0-10 carbons); OligoPEG, phosphate, ROH (R=alkyl ranging from 0-5 carbons), —[OCH₂CH₂]— repeats; OH; SO₃; NO₂; amine, amide, carbonyl Cl, Br, I, F, BH₃, [CH₂Q]⁺[A]⁻

R₂=H, any alkyl, RCOOH (R=alkyl ranging from 0-10 carbons); OligoPEG, phosphate, ROH (R=alkyl ranging from 0-5 carbons), —[OCH₂CH₂]— repeats; OH; SO₃; NO₂; amine, amide, carbonyl Cl, Br, I, F, BH₃, [CH₂Q]⁺[A]⁻

R₃=H, any alkyl, RCOOH (R=alkyl ranging from 0-10 carbons); OligoPEG, phosphate, ROH (R=alkyl ranging from 0-5 carbons), —[OCH₂CH₂]— repeats; OH; SO₃; NO₂; amine, amide, carbonyl Cl, Br, I, F, BH₃, [CH₂Q]⁺[A]⁻

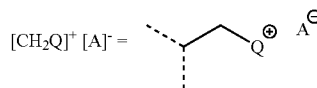
R₄=H, any alkyl, RCOOH (R=alkyl ranging from 0-10 carbons); OligoPEG, phosphate, ROH (R=alkyl ranging from 0-5 carbons), —[OCH₂CH₂]— repeats; OH; SO₃; NO₂; amine, amide, carbonyl Cl, Br, I, F, BH₃, [CH₂Q]⁺[A]⁻

R₅=H, any alkyl, RCOOH (R=alkyl ranging from 0-10 carbons); OligoPEG, phosphate, ROH (R=alkyl ranging from 0-5 carbons), —[OCH₂CH₂]— repeats; OH; SO₃; NO₂; amine, amide, carbonyl Cl, Br, I, F, BH₃, [CH₂Q]⁺[A]⁻

R₆=H, any alkyl, RCOOH (R=alkyl ranging from 0-10 carbons); OligoPEG, phosphate, ROH (R=alkyl ranging from 0-5 carbons), —[OCH₂CH₂]— repeats; OH; SO₃; NO₂; amine, amide, carbonyl Cl, Br, I, F, BH₃, [CH₂Q]⁺[A]⁻

R₇=H, any alkyl, RCOOH (R=alkyl ranging from 0-10 carbons); OligoPEG, phosphate, ROH (R=alkyl ranging from 0-5 carbons), —[OCH₂CH₂]— repeats; OH; SO₃; NO₂; amine, amide, carbonyl Cl, Br, I, F, BH₃, [CH₂Q]⁺[A]⁻

R₈=H, any alkyl, RCOOH (R=alkyl ranging from 0-10 carbons); OligoPEG, phosphate, ROH (R=alkyl ranging from 0-5 carbons), —[OCH₂CH₂]— repeats; OH; SO₃; NO₂; amine, amide, carbonyl Cl, Br, I, F, BH₃, [CH₂Q]⁺[A]⁻; and



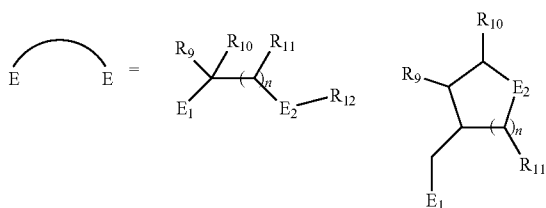
where A=monovalent anion: Cl, Br, I, F, PF₆, BF₄, acetate, trifluoroacetate, ClO₄, NO₃, and

Q=monovalent cation: P(R)₃, R=alkyl, cyclic alkyl, Aryl, O-alkyl, O-Aryl;

N(R)₃, R=alkyl, cyclic alkyl, N-heterocyclic ring, imidazole; and

5

(d)



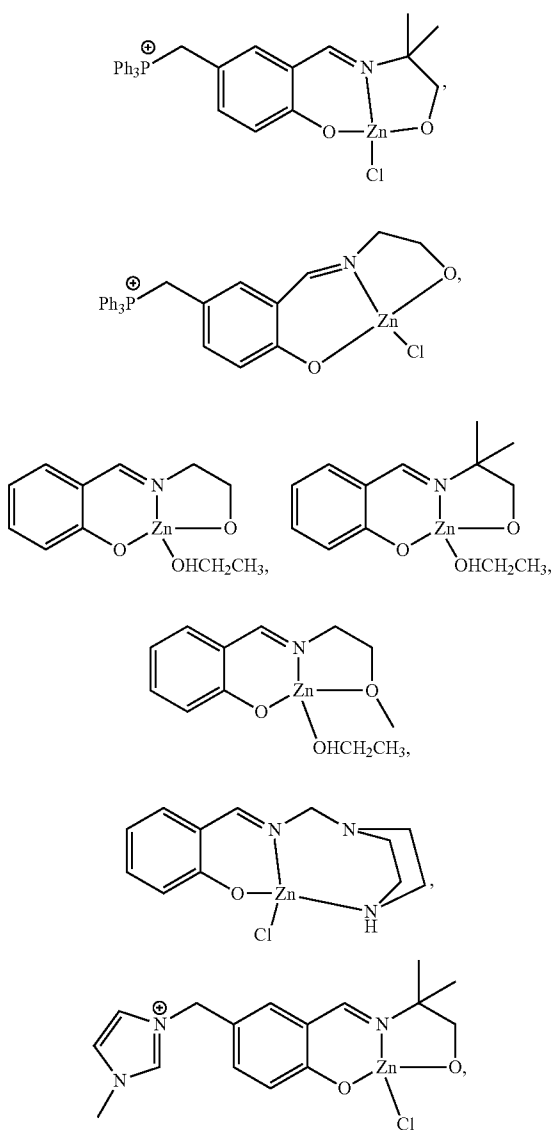
where

$E_1 = N, P, S, B;$

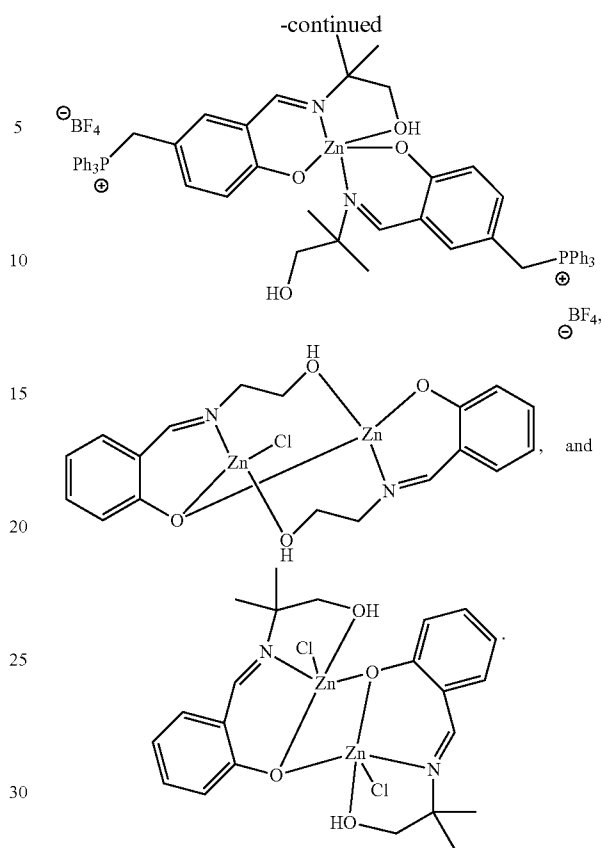
$E_2 = N, P, S, O, B;$ and

$n = 1-10.$

In other embodiments, the bidentate transition-metal ligand complex is selected from one of the following structures:



6



In some embodiments, the particles have a width of between about 0.1 and 500 microns. In other embodiments, the particles have a width of less than 100 nanometers. In further embodiments, combinations of the two may be used.

The amine solvent may comprise an carbon capture solvent, such as monoethanolamine (MEA), 1-amino-2-propanol (1A2P), 3-amino-1-propanol, 2-amino-1-propanol, 2-amino-1-butanol, 1-amino-2-butanol, 3-amino-2-butanol, 2-(methylamino)ethanol (MAE), 2-(ethylamino)ethanol, morpholine, piperazine (PZ), 1-methylpiperazine (NMP), 2-methylpiperazine, hydroxypiperidine, 2-piperidineethanol, N-aminoethylpiperazine (AEP), aminopropylmorpholine, 4-aminopiperidine, 2-amino-2-methyl-1-propanol (AMP), diethanolamine (DEA), diisopropanolamine (DIPA), glycine, alanine, β -alanine, sarcosine, ethylene diamine (EDA), 1,3-propanediamine, 1,4-butanediamine, 1,5-pentanediamine, 1,6-hexanediamine, methyl-diethanolamine (MDEA), triethanolamine (TEA), dimethylethanolamine (DMEA), N,N,N',N'-tetramethyl-1,8-naphthalenediamine, diethylmonoethanolamine, dipropylmonoethanolamine, 1,4-dimethylpiperazine, N,N,N',N'-tetramethyl-1,6-hexanediamine, N,N,N',N'-tetrakis(2-hydroxyethyl)ethylenediamine, N,N,N',N',N''-pentamethyldiethylenetriamine, N,N,N',N'-tetramethylethylenediamine, N,N,N',N'-tetramethylpropane-1,3-diamine, N,N,N',N'-tetramethylbutane-1,4-diamine, N,N,N',N'-tetramethyl-1,5-pentanediamine, alkali carbonate, and mixtures thereof.

The amine solvent comprises an amine dissolved in water, wherein the amine comprises between about 15 to about 50 weight percent of the amine solvent. The amine solvent has a viscosity of between about 3 to about 10 cP. The particles may comprise between about 0.5 to 2.5 percent by weight of the biphasic scrubbing solution.

Also provided are methods of improving carbon capture comprising utilizing the biphasic solution described herein as a stripping agent in a carbon capture system.

BRIEF DESCRIPTION OF THE DRAWINGS

FIG. 1 shows a generalized schematic of post combustion CO₂ capture process using aqueous amine solvent.

FIG. 2 shows an overview of the synthesis of catalytic Si particles.

FIG. 3 shows a synthetic pathway for catalytic activated carbon particles.

FIG. 4 shows a general design for activated carbon catalyst particles where E is an electrophile or electrophile salt, M is a transition metal, and X is a coordinating anion.

FIG. 5 shows a comparison of CO₂ absorption rate between baseline 30% MEA, Si particles, and catalytic-particles.

FIG. 6 shows a comparison of total CO₂ removal between Catalyst-appended hydrophobic Si catalytic-particles.

FIG. 7 shows a comparison of CO₂ absorption rate between baseline 30% MEA, activated carbon particles (325 mesh), and catalytic-particles (Zn Cat. And Cat Co).

FIG. 8 shows BET data for Zn cat AC and commercially obtained 325 mesh AC.

FIG. 9 shows stir reactor data, showing increase in overall CO₂ removal rate upon addition of 1 wt. % catalyst-functionalized particles.

FIG. 10 shows a summary of synthesis of zinc catalysts surface-appended to activated carbon particles.

DETAILED DESCRIPTION

The present invention provides a biphasic solution of an amine solvent with entrained catalytic particles suspended therein. The invention described herein also provides a method for more efficient removal of CO₂ from fossil fuel boiler flue gas using the biphasic solution as a scrubbing agent. The entrained catalytic-particle in liquid solution provides benefit to the mass transfer enhancement by enhancing liquid film macro/micro-turbulence and increasing CO₂ molecule and solvent active component diffusion which is usually a rate-limiting step for those fast kinetics CO₂ solvents. There is also an added enhancement in mass transfer due to the activity of the CO₂ hydration catalyst. With enhanced CO₂ absorption rate, the residence time to reach target capture efficient is decreased, which requires a shorter absorber length and a lower capital cost. A further benefit from this invention is that a richer carbon loading may be reached with increased mass transfer, thereby lowering stripper energy requirements. The invention can be applied to any solvent based post combustion CO₂ capture process in which mass transfer is limited by physical diffusion.

The small scale catalytic-catalytic-particles provides multiple features to contribute to enhanced mass transfer: (1) boundary layer turbulence enhancement. The turbulent level in liquid film is greatly enhanced by the movement of catalytic-particles which could increase the diffusion of gas molecule from the boundary layer to the bulk and fresh solvent active component from bulk to reaction interface layer. The particle size is selected to be smaller than the typical liquid layer thickness and large enough to create turbulence to enhance mass transfer; (2) "shuttle mechanism". Gas molecules are adsorbed by catalytic-particles at gas-liquid interface and travel to liquid bulk where gas molecules are released by a concentration gradient; (3)

inhibition of bubble coalescence. The particle can adhere on the surface of gas bubble to inhibit the coalescence of bubble, and increase the specific gas-liquid interfacial area, and (4) Catalytic hydration of CO₂ into bicarbonate

The system is designed so that catalytic-catalytic-particles are entrained with solvent in the absorber, providing a biphasic solution. There are options of (1) separating the catalytic-particles prior to regeneration to protect catalytic-particles from elevated temperature in stripper; and (2) keeping the catalytic-particles in solvent in regeneration process for process simplicity. In case of catalytic-particles entrained with solvent in regeneration, it is highly possible that the catalytic-particles also facilitates desorption rate as physical mass transfer is usually a limiting step at elevated temperature and fast kinetics.

Previous studies have shown increase in overall CO₂ mass transfer upon the addition of unfunctionalized, commercially available particles, such as activated carbon (see U.S. patent application Ser. No. 15/423,042, incorporated herein by reference in its entirety). These studies have shown that hydrophobic particles show greater enhancement, and therefore hydrophobic supports that could be functionalized with groups were targeted to serve as a covalent tether for catalysts. Two target particles were selected as exemplary support medium, carbon and silicon. The method of functionalization varies for each particle; where carbon particles are oxidized chemically to yield a carboxylic acid appended surface, and elemental silicon is ball milled in the presence of alkenes to mechanically cleave Si—Si bonds and result in strong Si—C bonds. In the case of the silicon particles, the identity and ratio of the alkene(s) used therefore determines the surface functionalization. Once a surface-functionalized particle is obtained, a transition-metal containing complex is synthesized on the solid support, which functions as a CO₂ hydration catalyst. This catalyst enhances the kinetics of the rate-limiting step for the CO₂ hydration reaction, thereby increasing overall mass transfer of CO₂ from the acid gas into the amine absorption solution.

One distinct advantage to the novel process described herein, is the overall flexibility of the synthesis, allowing for tuning of particle hydrophobicity as well as catalyst loading and catalyst structure. In the specific example shown below, we utilized silicon particles that were synthesized in the presence of a 60:40 mixture of 1-hexene and allyl alcohol. This gives a surface that is appended with a mixture of hydrophobic hexane and an alcohol for covalent tether of the catalyst (FIG. 2). Since the catalytic-particles are heterogeneous, the synthesis is easily scalable as excess reagent/solvent is easily removed by filtration or centrifugation/decantation.

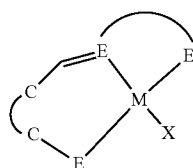
The synthesis method is readily adapted to fit alternative substrates such as activated carbon. FIG. 3 shows the fabrication process to attach various catalysts to an activated carbon core. All of the particles of this kind follow the design as shown in FIG. 4.

With regard to the particles, in certain embodiments, the particles have a width of less than about 500 microns. In further embodiments, the particles are hydrophobic. In even further embodiments, the particles are comprised of activated carbon particles and/or Si particles. A surface of the activated carbon particles may be functionalized, such as by oxidation. The activated carbon particles may also be functionalized by appending of a functional group to the particle. Examples of appended groups include an alcohol, a primary amine, a tertiary amine, and an amino silane. As mentioned above, Si particles can be functionalized through ball milling in the presence of alkenes. With regard to size, in some

9

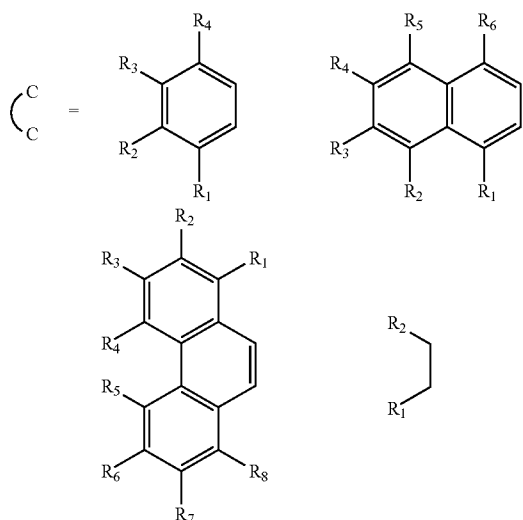
embodiments the particles may possess a width of between about 0.1 and 500 microns. In other embodiments, the particles have a width of less than 100 nanometers. In yet further embodiments, the particles may comprise a mixture of particles with an average width of about 0.1 to 500 microns and particles with a width of less than 100 nanometers.

With regard to the surface-appended catalyst, in some embodiments CO₂ hydration catalysts may be appended to the surface of particles, including carbonic anhydrase mimic catalysts. Catalysts may include catalysts containing 2-coordinate (bidentate) ligands. Such examples of suitable catalysts are identified in U.S. patent application Ser. No. 14/593,399 (incorporated by reference herein in its entirety). For example, the catalyst compound may have a chemical formula:



where:

- (a) M is any group VII B through XII B element;
- (b) x=neutral sigma donor or monovalent anion;
- (c)



where R₁=H, any alkyl, RCOOH (R=alkyl ranging from 0-10 carbons); OligoPEG, phosphate, ROH (R=alkyl ranging from 0-5 carbons), —[OCH₂CH₂]— repeats; OH; SO₃; NO₂; amine, amide, carbonyl Cl, Br, I, F, BH₃, [CH₂Q]⁺[A]⁻

R₂=H, any alkyl, RCOOH (R=alkyl ranging from 0-10 carbons); OligoPEG, phosphate, ROH (R=alkyl ranging from 0-5 carbons), —[OCH₂CH₂]— repeats; OH; SO₃; NO₂; amine, amide, carbonyl Cl, Br, I, F, BH₃, [CH₂Q]⁺[A]⁻

R₃=H, any alkyl, RCOOH (R=alkyl ranging from 0-10 carbons); OligoPEG, phosphate, ROH (R=alkyl ranging from 0-5 carbons), —[OCH₂CH₂]— repeats; OH; SO₃; NO₂; amine, amide, carbonyl Cl, Br, I, F, BH₃, [CH₂Q]⁺[A]⁻

R₄=H, any alkyl, RCOOH (R=alkyl ranging from 0-10 carbons); OligoPEG, phosphate, ROH (R=alkyl ranging

10

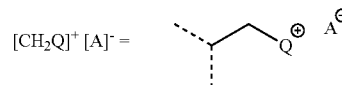
from 0-5 carbons), —[OCH₂CH₂]— repeats; OH; SO₃; NO₂; amine, amide, carbonyl Cl, Br, I, F, BH₃, [CH₂Q]⁺[A]⁻

R₅=H, any alkyl, RCOOH (R=alkyl ranging from 0-10 carbons); OligoPEG, phosphate, ROH (R=alkyl ranging from 0-5 carbons), —[OCH₂CH₂]— repeats; OH; SO₃; NO₂; amine, amide, carbonyl Cl, Br, I, F, BH₃, [CH₂Q]⁺[A]⁻

R₆=H, any alkyl, RCOOH (R=alkyl ranging from 0-10 carbons); OligoPEG, phosphate, ROH (R=alkyl ranging from 0-5 carbons), —[OCH₂CH₂]— repeats; OH; SO₃; NO₂; amine, amide, carbonyl Cl, Br, I, F, BH₃, [CH₂Q]⁺[A]⁻

R₇=H, any alkyl, RCOOH (R=alkyl ranging from 0-10 carbons); OligoPEG, phosphate, ROH (R=alkyl ranging from 0-5 carbons), —[OCH₂CH₂]— repeats; OH; SO₃; NO₂; amine, amide, carbonyl Cl, Br, I, F, BH₃, [CH₂Q]⁺[A]⁻

R₈=H, any alkyl, RCOOH (R=alkyl ranging from 0-10 carbons); OligoPEG, phosphate, ROH (R=alkyl ranging from 0-5 carbons), —[OCH₂CH₂]— repeats; OH; SO₃; NO₂; amine, amide, carbonyl Cl, Br, I, F, BH₃, [CH₂Q]⁺[A]⁻; and

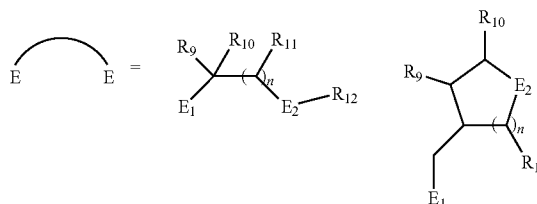


where A=monovalent anion: Cl, Br, I, F, PF₆, BF₄, acetate, trifluoroacetate, ClO₄, NO₃, and

Q=monovalent cation: P(R)₃, R=alkyl, cyclic alkyl, Aryl, O-alkyl, O-Aryl;

N(R)₃, R=alkyl, cyclic alkyl, N-heterocyclic ring, imidazole; and

(d)



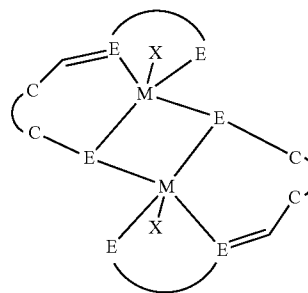
where

E₁=N, P, S, B;

E₂=N, P, S, O, B; and

n=1-10.

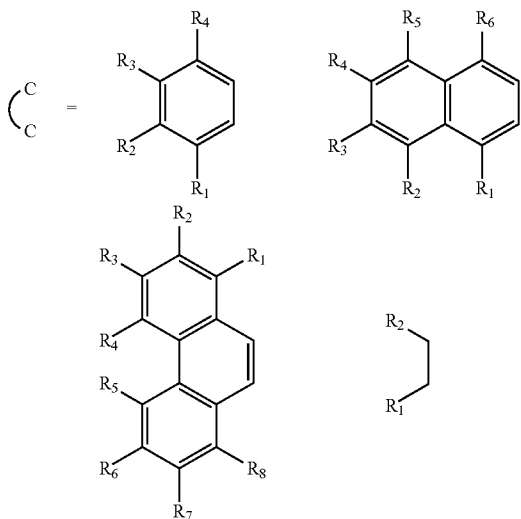
In further embodiments, the catalyst compound may have a chemical formula:



11

where:

- (a) M is any group VII B through XII B element;
 (b) x=neutral sigma donor or monovalent anion;
 (c)



where R_1 =H, any alkyl, RCOOH (R=alkyl ranging from 0-10 carbons); OligoPEG, phosphate, ROH (R=alkyl ranging from 0-5 carbons), $-\text{[OCH}_2\text{CH}_2\text{]}-$ repeats; OH; SO_3 ; NO_2 ; amine, amide, carbonyl Cl, Br, I, F, BH_3 , $[\text{CH}_2\text{Q}]^+[\text{A}]^-$

R_2 =H, any alkyl, RCOOH (R=alkyl ranging from 0-10 carbons); OligoPEG, phosphate, ROH (R=alkyl ranging from 0-5 carbons), $-\text{[OCH}_2\text{CH}_2\text{]}-$ repeats; OH; SO_3 ; NO_2 ; amine, amide, carbonyl Cl, Br, I, F, BH_3 , $[\text{CH}_2\text{Q}]^+[\text{A}]^-$

R_3 =H, any alkyl, RCOOH (R=alkyl ranging from 0-10 carbons); OligoPEG, phosphate, ROH (R=alkyl ranging from 0-5 carbons), $-\text{[OCH}_2\text{CH}_2\text{]}-$ repeats; OH; SO_3 ; NO_2 ; amine, amide, carbonyl Cl, Br, I, F, BH_3 , $[\text{CH}_2\text{Q}]^+[\text{A}]^-$

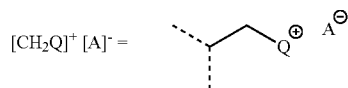
R_4 =H, any alkyl, RCOOH (R=alkyl ranging from 0-10 carbons); OligoPEG, phosphate, ROH (R=alkyl ranging from 0-5 carbons), $-\text{[OCH}_2\text{CH}_2\text{]}-$ repeats; OH; SO_3 ; NO_2 ; amine, amide, carbonyl Cl, Br, I, F, BH_3 , $[\text{CH}_2\text{Q}]^+[\text{A}]^-$

R_5 =H, any alkyl, RCOOH (R=alkyl ranging from 0-10 carbons); OligoPEG, phosphate, ROH (R=alkyl ranging from 0-5 carbons), $-\text{[OCH}_2\text{CH}_2\text{]}-$ repeats; OH; SO_3 ; NO_2 ; amine, amide, carbonyl Cl, Br, I, F, BH_3 , $[\text{CH}_2\text{Q}]^+[\text{A}]^-$

R_6 =H, any alkyl, RCOOH (R=alkyl ranging from 0-10 carbons); OligoPEG, phosphate, ROH (R=alkyl ranging from 0-5 carbons), $-\text{[OCH}_2\text{CH}_2\text{]}-$ repeats; OH; SO_3 ; NO_2 ; amine, amide, carbonyl Cl, Br, I, F, BH_3 , $[\text{CH}_2\text{Q}]^+[\text{A}]^-$

R_7 =H, any alkyl, RCOOH (R=alkyl ranging from 0-10 carbons); OligoPEG, phosphate, ROH (R=alkyl ranging from 0-5 carbons), $-\text{[OCH}_2\text{CH}_2\text{]}-$ repeats; OH; SO_3 ; NO_2 ; amine, amide, carbonyl Cl, Br, I, F, BH_3 , $[\text{CH}_2\text{Q}]^+[\text{A}]^-$

R_8 =H, any alkyl, RCOOH (R=alkyl ranging from 0-10 carbons); OligoPEG, phosphate, ROH (R=alkyl ranging from 0-5 carbons), $-\text{[OCH}_2\text{CH}_2\text{]}-$ repeats; OH; SO_3 ; NO_2 ; amine, amide, carbonyl Cl, Br, I, F, BH_3 , $[\text{CH}_2\text{Q}]^+[\text{A}]^-$; and



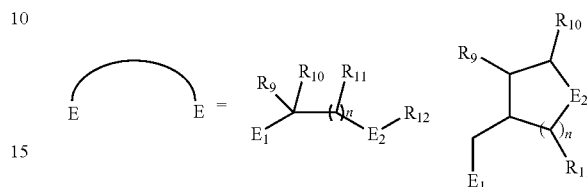
12

where A=monovalent anion: Cl, Br, I, F, PF_6 , BF_4 , acetate, trifluoroacetate, ClO_4 , NO_3 , and

Q=monovalent cation: $\text{P}(\text{R})_3$, R=alkyl, cyclic alkyl, Aryl, O-alkyl, O-Aryl; and

5 N(R)₃, R=alkyl, cyclic alkyl, N-heterocyclic ring, imidazole;

(d)



where

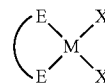
E_1 =N, P, S, B;

20 E_2 =N, P, S, O, B; and

$n=1-10$.

In further still embodiments, the catalyst compound may have a chemical formula of:

25



30

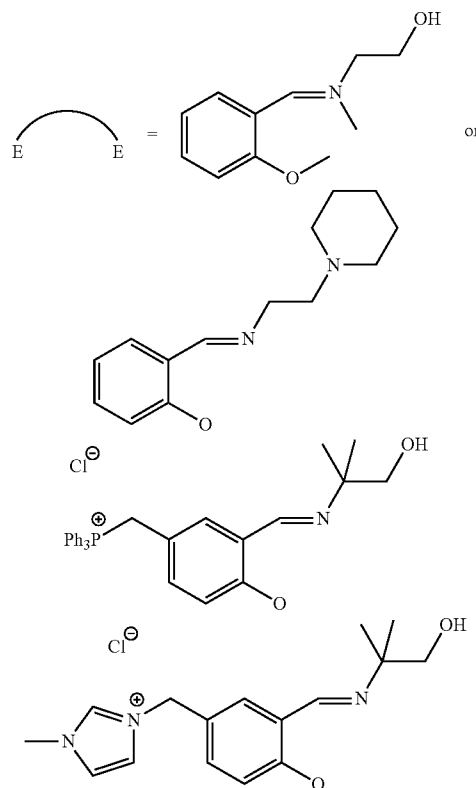
where:

(a) M is any group VII B through XII B element;

(b) x=neutral sigma donor or monovalent anion; and

(c)

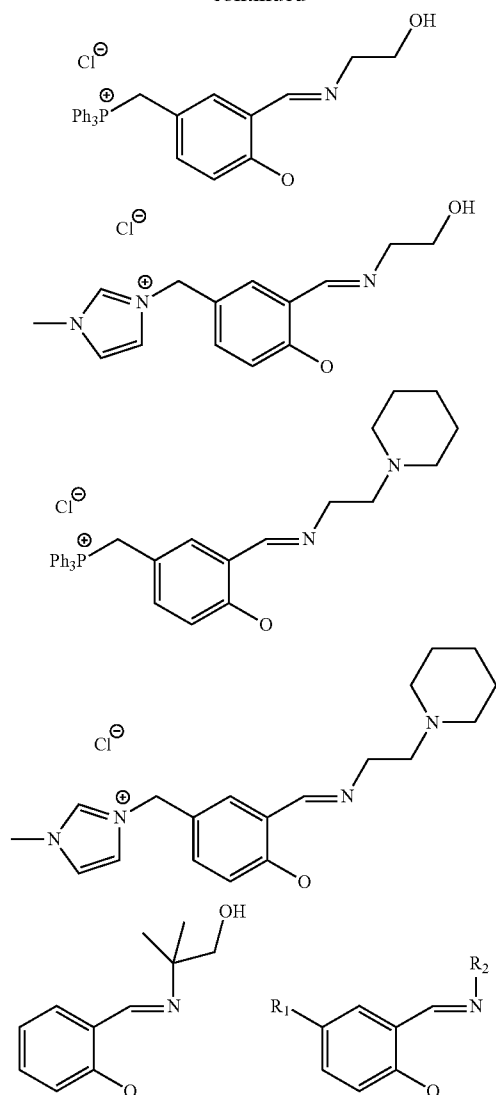
35



65

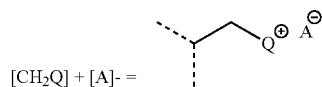
13

-continued



$R_1 = \text{H}$, any alkyl, RCOOH (R=alkyl ranging from 0-10 carbons); OligoPEG, phosphate, ROH (R=alkyl ranging from 0-5 carbons), $-\text{[OCH}_2\text{CH}_2\text{]}_n-$ repeats;

OH; SO_3 ; NO_2 ; amine, amide, carbonyl Cl, Br, I, F, BH_3 , $[\text{CH}_2\text{Q}]_n[\text{A}]^-$; and



where A=monovalent anion: Cl, Br, I, F, PF_6 , BF_4 , acetate, trifluoroacetate, ClO_4 , NO_3 , and

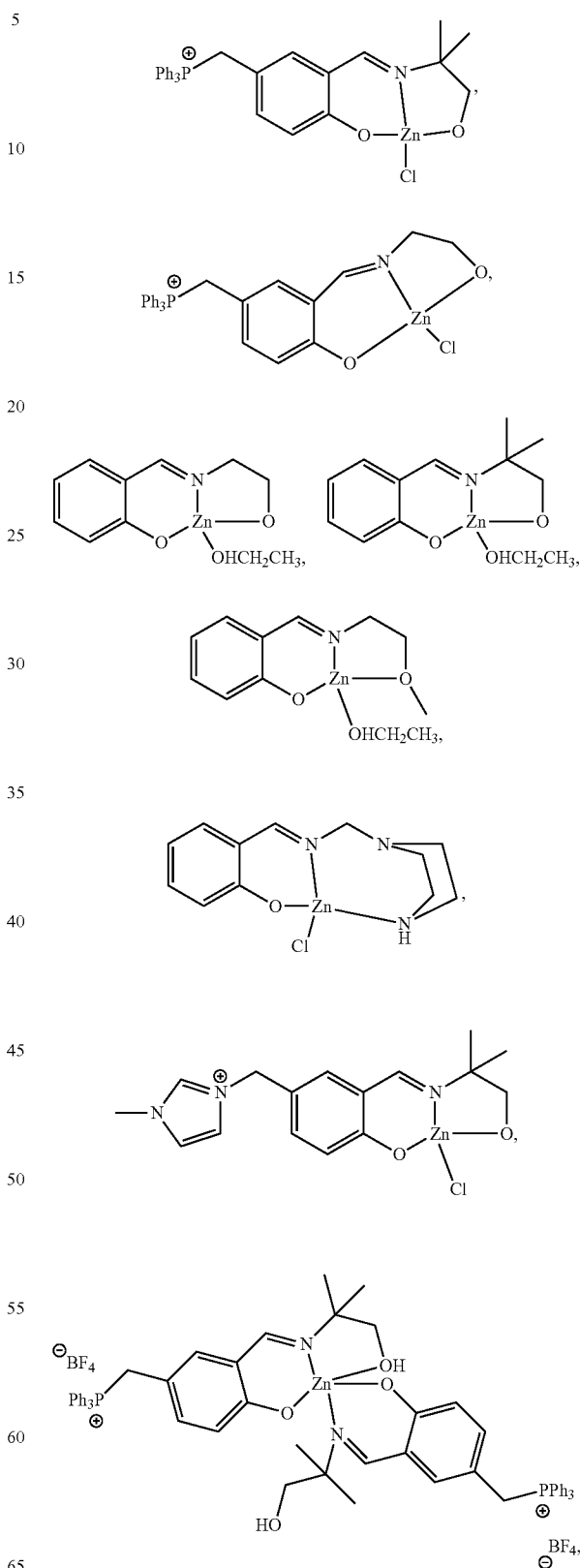
Q=monovalent cation: $\text{P}(\text{R})_3$, R=alkyl, cyclic alkyl, Aryl, O-alkyl, O-Aryl; and

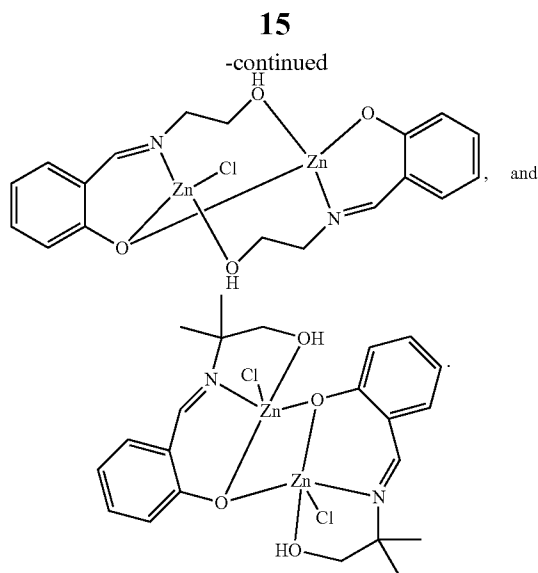
$\text{N}(\text{R})_3$, R=alkyl, cyclic alkyl, N-heterocyclic ring, imidazole; and

$\text{R}_2 = \text{CE}$; where C=any alkyl, cyclic alkyl, aryl, and E=OH, NH_2 , $\text{N}(\text{R})_3$, R=alkyl, cyclic alkyl, N-heterocyclic ring, imidazole, morpholine.

14

Other examples of suitable catalysts include the following structures:





For the biphasic solution, the particles are suspended in an amine solvent. The choice of amine solvent may include amine solvents employed in carbon capture systems. For example, the amine solvent may be monoethanolamine (MEA), 1-amino-2-propanol (1A2P), 3-amino-1-propanol, 2-amino-1-propanol, 2-amino-1-butanol, 1-amino-2-butanol, 3-amino-2-butanol, 2-(methylamino)ethanol (MAE), 2-(ethylamino)ethanol, morpholine, piperazine (PZ), 1-methylpiperazine (NMP), 2-methylpiperazine, hydroxypiperidine, 2-piperidineethanol, N-aminoethylpiperazine (AEP), aminopropylmorpholine, 4-aminopiperidine, 2-amino-2-methyl-1-propanol (AMP), diethanolamine (DEA), diisopropanolamine (DTPA), glycine, alanine, β -alanine, sarcosine, ethylene diamine (EDA), 1,3-propanediamine, 1,4-butanediamine, 1,5-pentanediamine, 1,6-hexanediamine, methyldiethanolamine (MDEA), triethanolamine (TEA), dimethylethanolamine (DMEA), N,N,N',N'-tetramethyl-1,8-naphthalenediamine, diethylmonoethanolamine, dipropylmonoethanolamine, 1,4-dimethylpiperazine, N,N,N',N'-tetramethyl-1,6-hexanediamine, N,N,N',N'-tetrakis(2-hydroxyethyl)ethylenediamine, N,N,N',N'-pentamethyldiethylenetriamine, N,N,N',N'-tetramethylethylenediamine, N,N,N',N'-tetramethylpropane-1,3-diamine, N,N,N',N'-tetramethylbutane-1,4-diamine, N,N,N',N'-tetramethyl-1,5-pentanediamine, alkali carbonate, and mixtures thereof.

Within the amine solvent, the particles may comprise between about 0.5 to 3 percent by weight of the biphasic scrubbing solution. The corresponding amine may be dissolved in water to achieve about 15 to about 50 weight percent of the amine solvent. The amine solvent has a viscosity of between about 3 to about 10 cP.

In certain embodiments, the biphasic solution counterflows against the gas flow. The contacting between the biphasic solution and the gas allows a liquid film forms at the interface of the gas flow and the biphasic solution. The presence of the particles increases amine and carbamate salt diffusion from the liquid film.

Further embodiments also include a carbon capture system comprised of a stripper, the stripper containing the described biphasic solution of amine solvents with particles appended with catalysts suspended therein.

16

EXAMPLES

Example 1

The enhancement of small scale catalytic-particles on mass transfer enhancement was demonstrated using a stirred reactor at 150 rpm with a stable gas-liquid interface to simulate a liquid film on packing material. The experiments were conducted at room temperature and 14% CO₂ simulated flue gas for simplicity. The data presented in FIG. 5 shows the CO₂ removal rates upon the addition of hydrophobic silicon-based catalytic-particles to 30 wt % monoethanolamine (MEA) solutions. These data indicate that unfunctionalized Si particles may actually inhibit CO₂ absorption slightly, but upon addition of the catalyst to the particle surface there is an increase in absorption (~5%) over the entire experimental range. Identical experiments were performed with the addition of 1 wt % functionalized activated carbon particles (FIG. 7). These particles show a significant improvement in mass transfer compared to the baseline solvent as well as the unfunctionalized activated carbon particles.

Example 2

The use of micron-sized particles, modified with a surface-appended carbonic anhydrase mimic catalyst, for use as a dual purpose solvent-additive increases mass transfer of CO₂ into amine-based CCS solvents. The particle additive increases mass transfer by decreasing the diffusion resistance of CO₂ into the solvent, while the biomimetic surface functionalization enhances reaction kinetics by catalyzing CO₂ hydration and decreasing the reaction resistance.

Zinc and Cobalt containing catalysts were synthesized. Synthesis of Zn Cat AC particles (FIG. 10) was achieved as follows: Tertiary Amine AC (10 g) was suspended in toluene, and chlorosalicylaldehyde (5.0 g, 30 mmol) was added. The mixture was stirred overnight before the solid was collected by filtration, washed with ethanol, acetone and ether. The resulting aldehyde particles were suspended in ethanol, and 2-methyl-2-amino propanol (AMP, 2.7 g, 30 mmol) was added and allowed to stir overnight. The solid was collected by filtration and washed with ethanol. The ligand-appended particles were re-suspended in ethanol before ZnCl₂ (4.1 g, 30 mmol) and trimethylamine (Et₃N, 3.04 g, 30 mmol) were added. After stirring overnight, the solid was collected by filtration, washed with ethanol, methanol, acetone and ether before air drying overnight. Synthesis of Co Cat AC was achieved using the same procedure as Zn Cat AC, with CoCl₂ for metalation.

Due to the similarity of the catalyst structures, the Zinc catalyst was characterized by BET, DLS, pKa & Bohem titrations for comparison to the commercially obtained 325 mesh starting material (see Table 1, FIG. 8). The mass transfer data was primarily collected in the stirred-reactor apparatus, with a flat gas-liquid interface, to simulate stable film formation on the packing material. The surface-modified particles were tested in order to improve mass transfer enhancement in both MEA and A2P/AMP (FIG. 9) and compared to the solvent baseline as well as the unfunctionalized 325 mesh carbon.

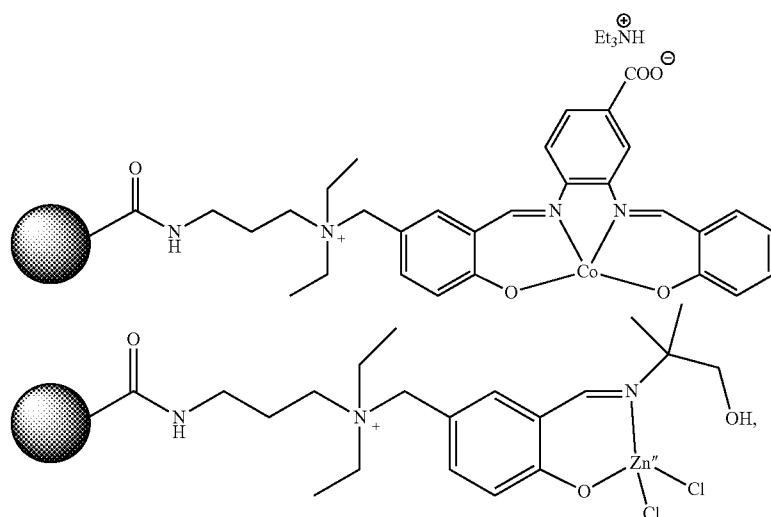
TABLE 1

Summary of surface properties of Zn Cat AC, as compared to commercial 325 mesh AC						
particle	α 0.3 rate (mol CO ₂ /kg/hr)	Z (d · nm)	Zeta (mV)	Surface pKa	Base Sites (mmol/g)	Acid Sites (mmol/g)
Unfunctionalized	1.72	764.2	-22.3	9.74	0.68	0.28
Zn Cat	2	719.2	16.9	6.48	0.034	0.87

The foregoing descriptions of various embodiments provide illustration of the inventive concepts. The descriptions are not intended to be exhaustive or to limit the disclosed invention to the precise form disclosed. Modifications or variations are also possible in light of the above teachings.

2. The biphasic scrubbing solution of claim 1, wherein the catalyst linker comprises an electrophile or electrophile salt.

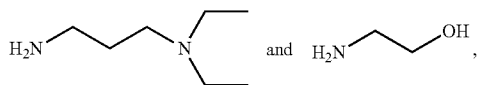
3. The biphasic scrubbing solution of claim 1, wherein the catalyst-appended particles are selected from the group consisting of:



The embodiments described above were chosen to provide the best application to thereby enable one of ordinary skill in the art to utilize the inventions in various embodiments and with various modifications as are suited to the particular use contemplated. All such modifications and variations are within the scope of the invention. All publications, patents and patent applications referenced herein are to be each individually considered to be incorporated by reference in their entirety.

The invention claimed is:

1. A biphasic scrubbing solution comprising an amine solvent with catalyst-appended particles suspended therein, wherein the particles comprise a surface-appended carbon dioxide (CO₂) adsorption catalyst and a particle, wherein the catalyst is appended to a surface of a particle through a particle linker and a catalyst linker, the catalyst linker being selected from:



and

further wherein the particles have a width of less than about 500 microns.

or mixtures thereof, and further wherein



represents the particle.

4. The biphasic scrubbing solution of claim 1, wherein the particles have a width of between about 0.1 and 500 microns.

5. The biphasic scrubbing solution of claim 1, wherein the particles have a width of less than 100 nanometers.

6. The biphasic scrubbing solution of claim 1, wherein the amine solvent is selected from the group consisting of monoethanolamine (MEA), 1-amino-2-propanol (1A2P), 3-amino-1-propanol, 2-amino-1-propanol, 2-amino-1-butanol, 1-amino-2-butanol, 3-amino-2-butanol, 2-(methylamino)ethanol (MAE), 2-(ethylamino)ethanol, morpholine, piperazine (PZ), 1-methylpiperazine (NMP), 2-methylpiperazine, hydroxypiperidine, 2-piperidineethanol, N-aminoethylpiperazine (AEP), aminopropylmorpholine, 4-aminopiperidine, 2-amino-2-methyl-1-propanol (AMP), diethanolamine (DEA), diisopropanolamine (DIPA), glycine, alanine, β -alanine, sarcosine, ethylene diamine (EDA), 1,3-propanediamine, 1,4-butanediamine, 1,5-pentaned-

19

amine, 1,6-hexanediamine, methyl-diethanolamine (MDEA), triethanolamine (TEA), dimethylethanolamine (DMEA), N,N,N',N'-tetramethyl-1,8-naphthalenediamine, diethyl-monoethanolamine, dipropylmonoethanolamine, 1,4-dimethylpiperazine, N,N,N',N'-tetramethyl-1,6-hexanediamine, N,N,N',N'-tetrakis(2-hydroxyethyl)ethylenediamine, N,N,N',N',N''-pentamethyldiethylenetriamine, N,N,N',N'-tetramethylethylenediamine, N,N,N',N'-tetramethylpropane-1,3-diamine, N,N,N',N'-tetramethylbutane-1,4-diamine, N,N,N',N'-tetramethyl-1,5-pentanediamine, alkali carbonate, and mixtures thereof.

7. The biphasic scrubbing solution of claim 1, wherein the particles comprise between about 0.5 to 2.5 percent by weight of the biphasic scrubbing solution.

8. The biphasic scrubbing solution of claim 1, wherein the amine solvent comprises an amine dissolved in water, wherein the amine comprises between about 15 to about 50 weight percent of the amine solvent.

9. The biphasic scrubbing solution of claim 1, wherein the amine solvent has a viscosity of between about 3 to about 10 cP.

10. The biphasic scrubbing solution of claim 1, wherein the particles are hydrophobic.

11. The biphasic scrubbing solution of claim 1, wherein the particles comprise activated carbon particles.

12. The biphasic scrubbing solution of claim 1, wherein the particles are functionalized to increase positive zeta potential.

13. The biphasic scrubbing solution of claim 12, wherein the particles are functionalized by oxidation.

14. The biphasic scrubbing solution of claim 12, wherein the particles are functionalized by surface-appending with a functional group selected from the group consisting of an alcohol, a primary amine, a tertiary amine, and an amino silane.

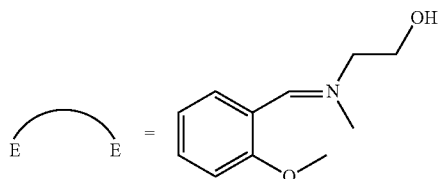
15. The biphasic scrubbing solution of claim 14, wherein the catalyst of the catalyst-appended particles comprises a carbonic anhydrase mimic catalyst of a bidentate transition-metal ligand complex.

16. The biphasic scrubbing solution of claim 15, wherein the carbonic anhydrase mimic catalyst comprises a structure of:

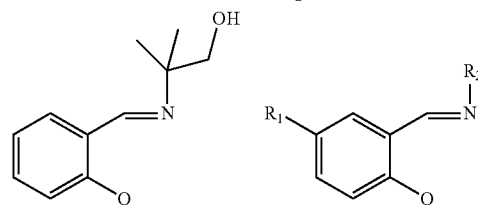


where:

- (a) M is any group VII B through XII B element;
- (b) x=neutral sigma donor or monovalent anion; and
- (c)

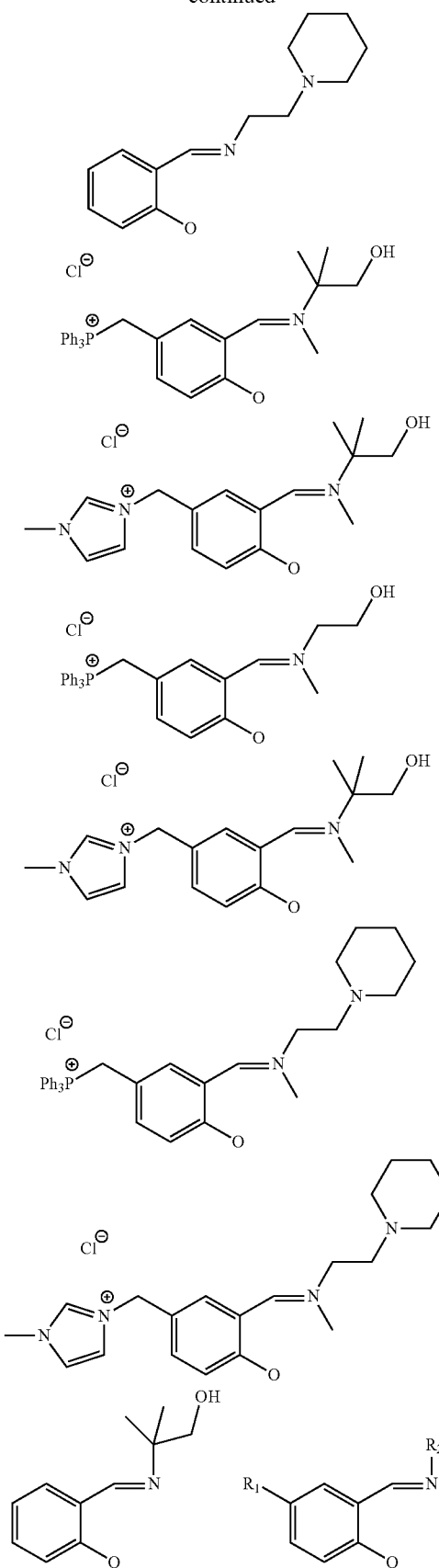


or



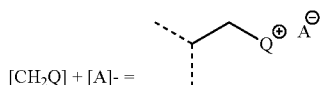
20

-continued



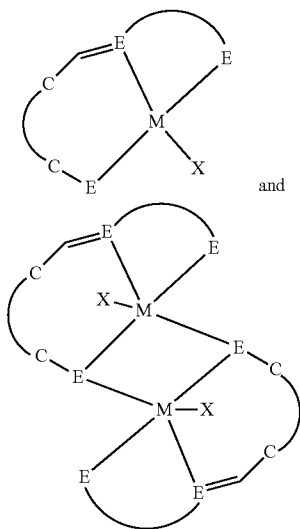
21

R₁=H, any alkyl, RCOOH (R=alkyl ranging from 0-10 carbons); OligoPEG, phosphate, ROH (R=alkyl ranging from 0-5 carbons), —[OCH₂CH₂] repeats; OH; SO₃; NO₂; amine, amide, carbonyl Cl, Br, I, F, BH₃, [CH₂Q]⁺[A]⁻; and



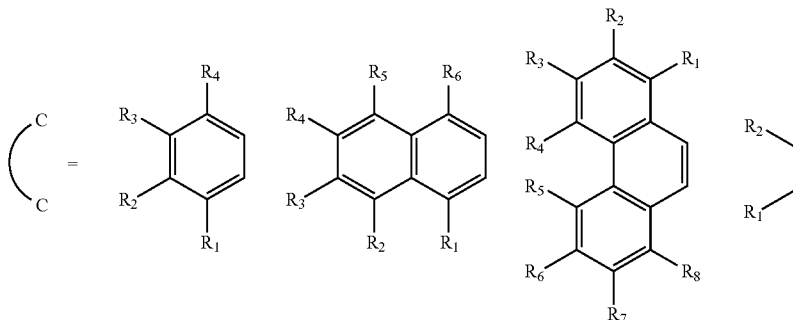
where A=monovalent anion: Cl, Br, I, F, PF₆, BF₄, acetate, trifluoroacetate, ClO₄, NO₃, and Q=monovalent cation: P(R)₃, R=alkyl, cyclic alkyl, Aryl, O-alkyl, O-Aryl; and N(R)₃, R=alkyl, cyclic alkyl, N-heterocyclic ring, imidazole; and R₂=CE; where C=any alkyl, cyclic alkyl, aryl, and E=OH, NH₂, N(R)₃, R=alkyl, cyclic alkyl, N-heterocyclic ring, imidazole, morpholine.

17. The biphasic scrubbing solution of claim 15, wherein the carbonic anhydrase mimic catalyst comprises a structure selected from the group consisting of:



where:

- (a) M is any group VII B through XII B element;
- (b) x=neutral sigma donor or monovalent anion;
- (c)



22

where R₁=H, any alkyl, RCOOH (R=alkyl ranging from 0-10 carbons); OligoPEG, phosphate, ROH (R=alkyl ranging from 0-5 carbons), —[OCH₂CH₂]— repeats; OH; SO₃; NO₂; amine, amide, carbonyl, Cl, Br, I, F, BH₃, [CH₂Q]⁺[A]⁻

R₂=H, any alkyl, RCOOH (R=alkyl ranging from 0-10 carbons); OligoPEG, phosphate, ROH (R=alkyl ranging from 0-5 carbons), —[OCH₂CH₂]— repeats; OH; SO₃; NO₂; amine, amide, carbonyl Cl, Br, I, F, BH₃, [CH₂Q]⁺[A]⁻

R₃=H, any alkyl, RCOOH (R=alkyl ranging from 0-10 carbons); OligoPEG, phosphate, ROH (R=alkyl ranging from 0-5 carbons), —[OCH₂CH₂]— repeats; OH; SO₃; NO₂; amine, amide, carbonyl Cl, Br, I, F, BH₃, [CH₂Q]⁺[A]⁻

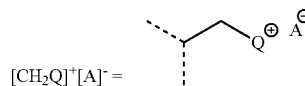
R₄=H, any alkyl, RCOOH (R=alkyl ranging from 0-10 carbons); OligoPEG, phosphate, ROH (R=alkyl ranging from 0-5 carbons), —[OCH₂CH₂]— repeats; OH; SO₃; NO₂; amine, amide, carbonyl Cl, Br, I, F, BH₃, [CH₂Q]⁺[A]⁻

R₅=H, any alkyl, RCOOH (R=alkyl ranging from 0-10 carbons); OligoPEG, phosphate, ROH (R=alkyl ranging from 0-5 carbons), —[OCH₂CH₂]— repeats; OH; SO₃; NO₂; amine, amide, carbonyl Cl, Br, I, F, BH₃, [CH₂Q]⁺[A]⁻

R₆=H, any alkyl, RCOOH (R=alkyl ranging from 0-10 carbons); OligoPEG, phosphate, ROH (R=alkyl ranging from 0-5 carbons), —[OCH₂CH₂]— repeats; OH; SO₃; NO₂; amine, amide, carbonyl Cl, Br, I, F, BH₃, [CH₂Q]⁺[A]⁻

R₇=H, any alkyl, RCOOH (R=alkyl ranging from 0-10 carbons); OligoPEG, phosphate, ROH (R=alkyl ranging from 0-5 carbons), —[OCH₂CH₂]— repeats; OH; SO₃; NO₂; amine, amide, carbonyl Cl, Br, I, F, BH₃, [CH₂Q]⁺[A]⁻

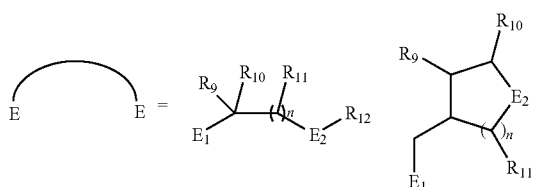
R₈=H, any alkyl, RCOOH (R=alkyl ranging from 0-10 carbons); OligoPEG, phosphate, ROH (R=alkyl ranging from 0-5 carbons), —[OCH₂CH₂]— repeats; OH; SO₃; NO₂; amine, amide, carbonyl Cl, Br, I, F, BH₃, [CH₂Q]⁺[A]⁻; and



where A=monovalent anion: Cl, Br, I, F, PF₆, BF₄, acetate, trifluoroacetate, ClO₄, NO₃, and Q=monovalent cation: P(R)₃, R=alkyl, cyclic alkyl, Aryl, O-alkyl, O-Aryl;

23

$N(R)_3$, R=alkyl, cyclic alkyl, N-heterocyclic ring, imidazole; and
(d)

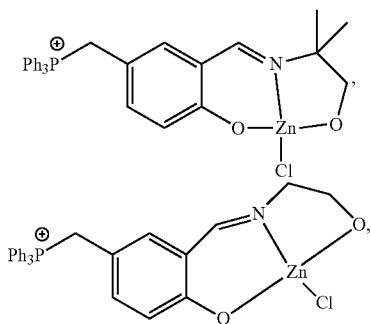


where

$E_1 = N, P, S, B;$

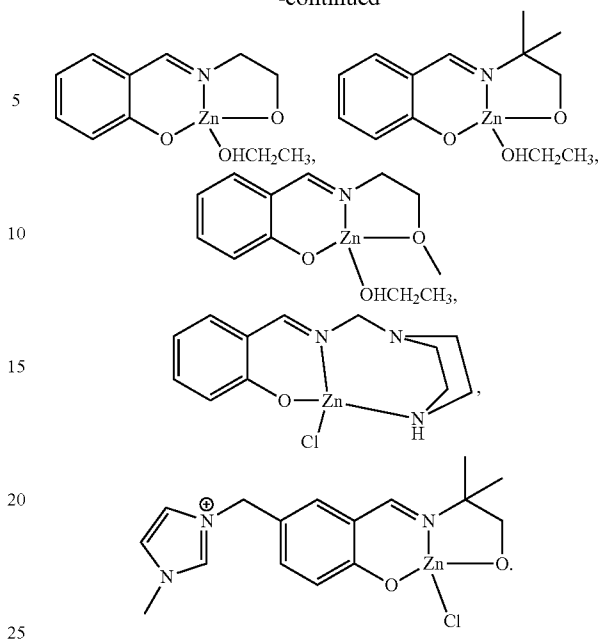
$E_2 = N, P, S, O, B; n = 1-10;$ and wherein E in C-E-M is O.

18. The biphasic scrubbing solution of claim 15, wherein the carbonic anhydrase mimic catalyst comprises a bidentate transition-metal ligand complex selected from the group consisting of:



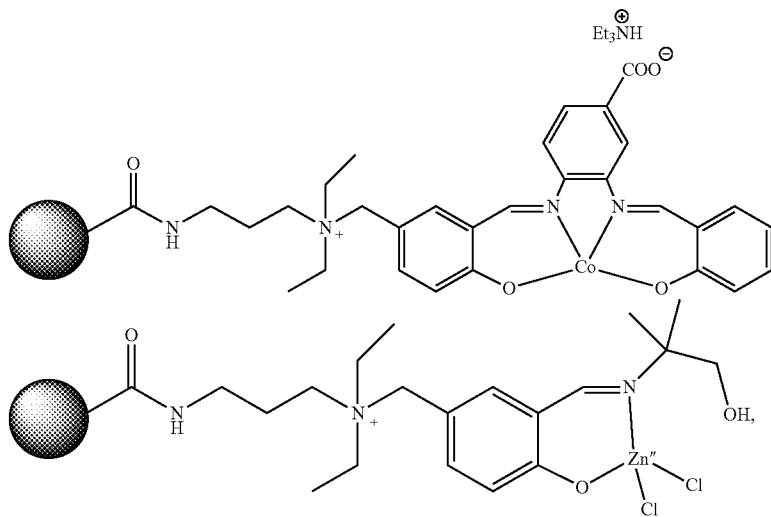
24

-continued



19. A method for increasing carbon capture from a gas comprising contacting the gas with the biphasic scrubbing solution of claim 1.

20. A biphasic scrubbing solution comprising an amine solvent with catalyst-appended particles suspended therein, wherein the catalyst-appended particles are selected from the group consisting of:



55 or mixtures thereof, and further wherein



60 represents the particle.

* * * * *