



1998

# Oil and Gas Map of the Evansville 30 x 60 Minute Quadrangle, Kentucky

Brandon C. Nuttall

University of Kentucky, bnuttall@uky.edu

**Right click to open a feedback form in a new tab to let us know how this document benefits you.**

Follow this and additional works at: [https://uknowledge.uky.edu/kgs\\_mc](https://uknowledge.uky.edu/kgs_mc)

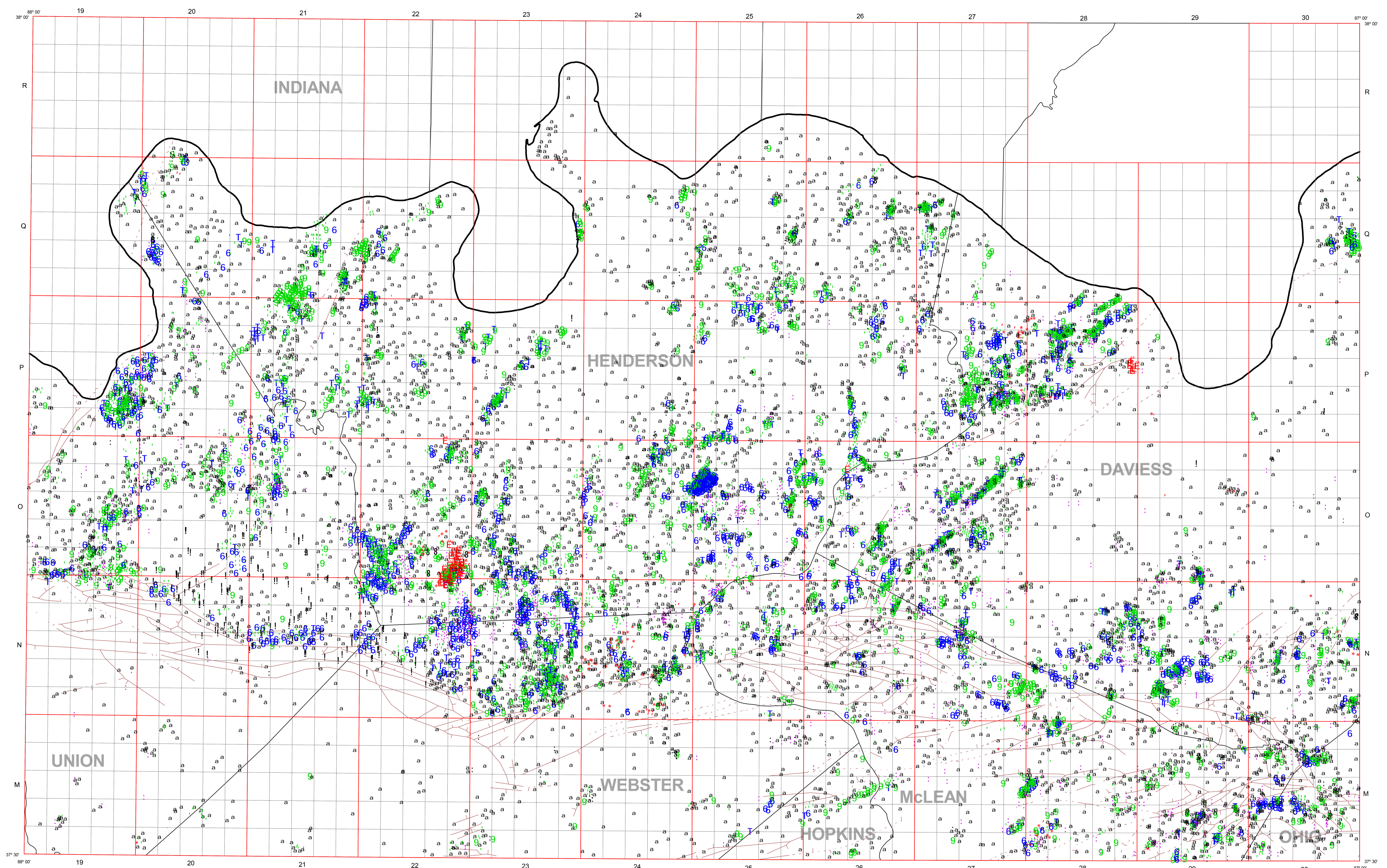
 Part of the [Geology Commons](#)

## Repository Citation

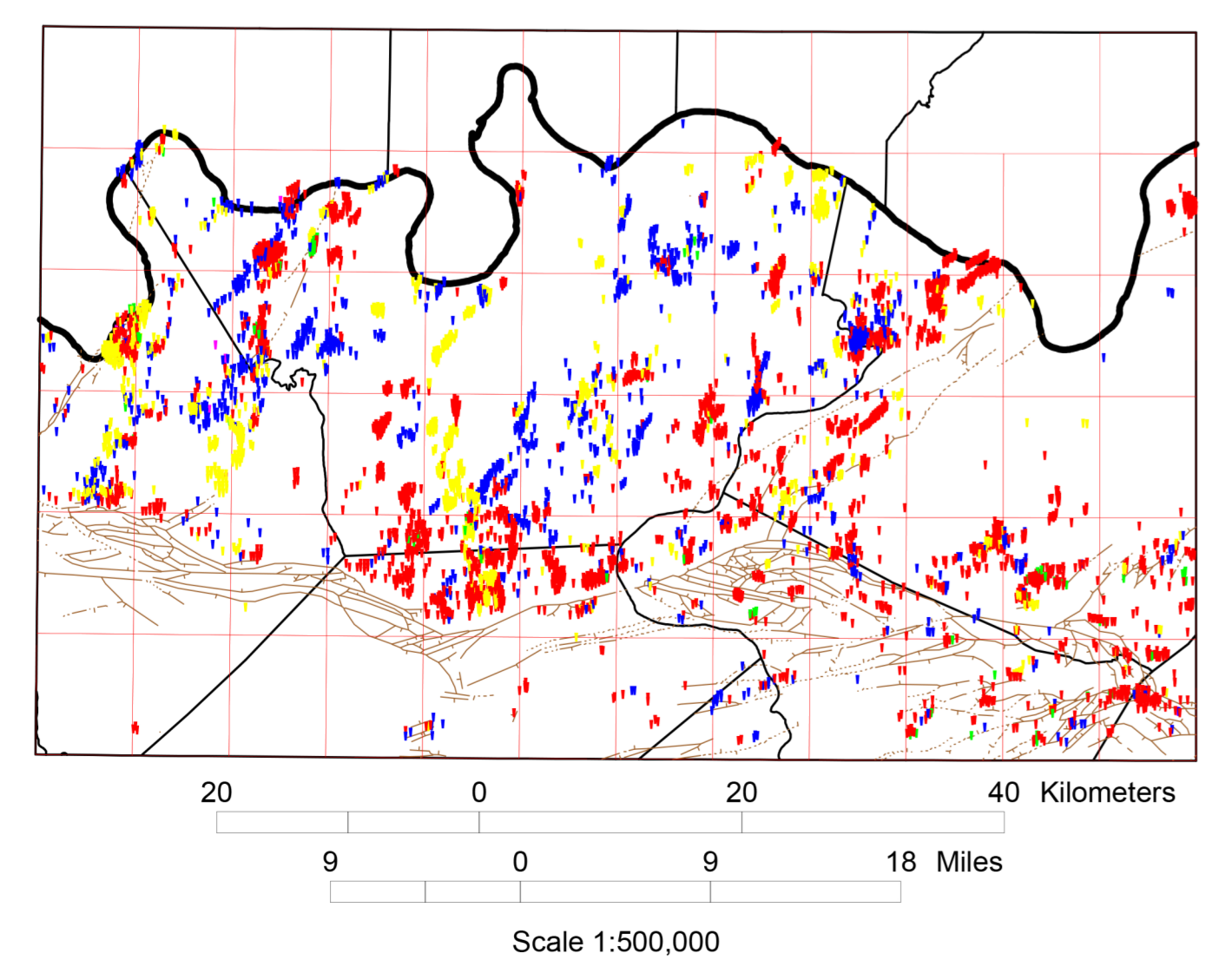
Nuttall, Brandon C., "Oil and Gas Map of the Evansville 30 x 60 Minute Quadrangle, Kentucky" (1998). *Kentucky Geological Survey Map and Chart*. 232.

[https://uknowledge.uky.edu/kgs\\_mc/232](https://uknowledge.uky.edu/kgs_mc/232)

This Map and Chart is brought to you for free and open access by the Kentucky Geological Survey at UKnowledge. It has been accepted for inclusion in Kentucky Geological Survey Map and Chart by an authorized administrator of UKnowledge. For more information, please contact [UKnowledge@lsv.uky.edu](mailto:UKnowledge@lsv.uky.edu).

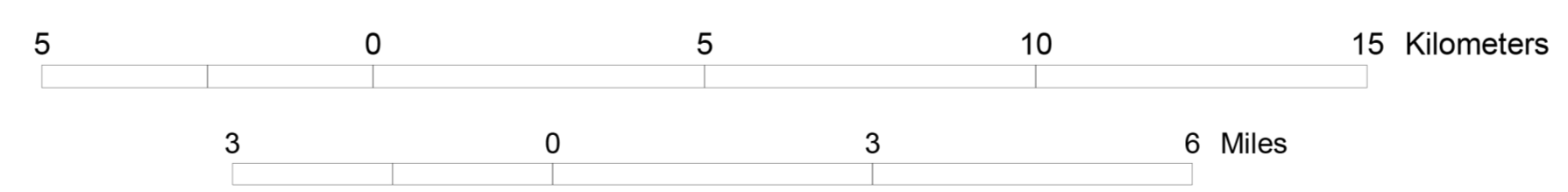


Generalized Distribution of Wells Producing from the Mississippian

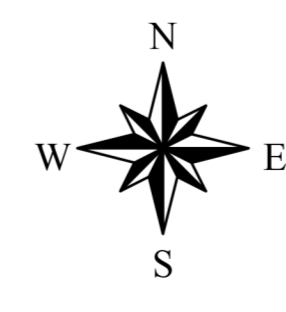
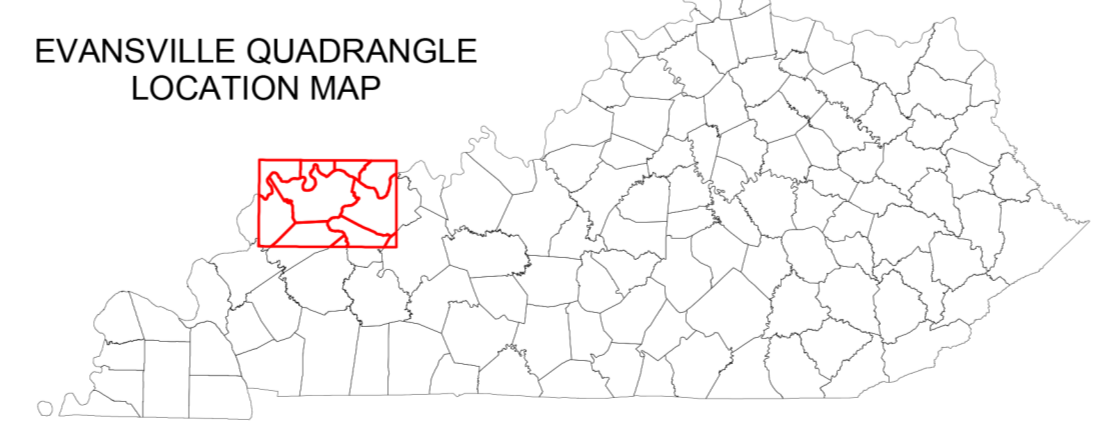


**OIL AND GAS MAP OF THE EVANSVILLE 30 x 60 MINUTE QUADRANGLE, KENTUCKY**

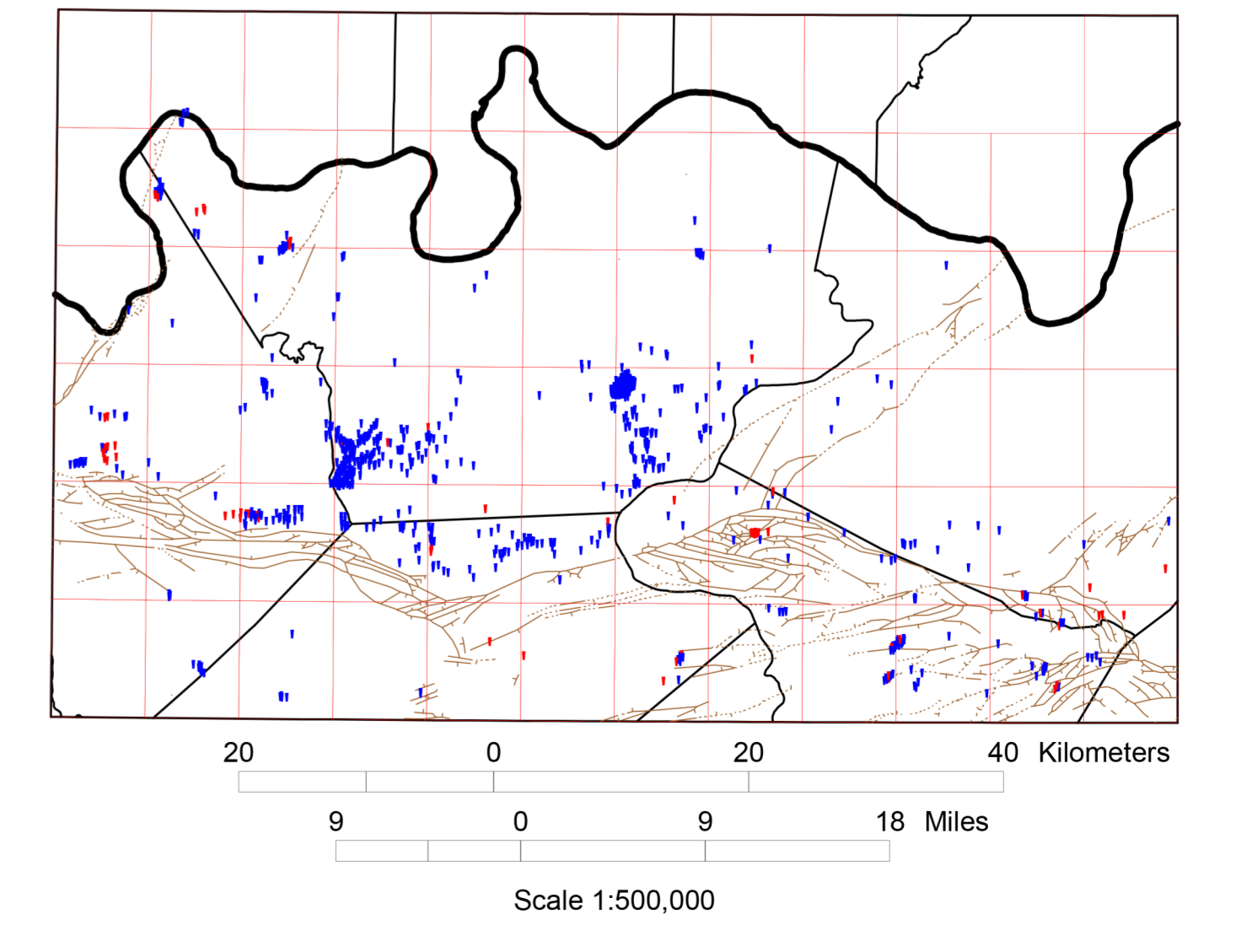
Brandon C. Nuttall



- EXPLANATION
- Surface fault
  - Oil well
  - Abandoned oil well
  - Combined oil and gas well
  - Abandoned oil and gas well
  - Gas well
  - Abandoned gas well
  - Gas storage well
  - Dry and abandoned well
  - Well location
  - × Scanning project location
  - × Observation well
  - × Secondary recovery or injection well
  - × Abandoned service well
  - ! Stratigraphic (core) test



Generalized Distribution of Wells Producing from the Pennsylvanian



- Fluvial deltaic clastics
- Deltaic sandstones

- Chesterian sandstones
- Aux Vases
- Chesterian carbonates
- Oolites (McClosky and others)
- Salem/Warsaw

This map was produced using the digital line graph (DLG) base map (1:100,000 scale, universal transverse Mercator, zone 16) available from the U.S. Geological Survey. Scanning project locations are wells gathered for archival purposes; minimal digital geologic and completion data are available. Fault data are from the digital version of the 1:500,000-scale "Geologic Map of Kentucky" by M.C. Noger (1988, U.S. Geological Survey) and are supplied for reference only. Fault information does not comply with 1:100,000-scale map accuracy standards. Digital oil and gas well location and completion data and copies of well records are available at the Kentucky Geological Survey, 228 Mining and Mineral Resources Building, University of Kentucky, Lexington, Kentucky, phone 606-257-5500.