



1999

# Oil and Gas Map of the Corbin 30 x 60 Minute Quadrangle, Kentucky

Brandon C. Nuttall

University of Kentucky, bnuttall@uky.edu

**Right click to open a feedback form in a new tab to let us know how this document benefits you.**

Follow this and additional works at: [https://uknowledge.uky.edu/kgs\\_mc](https://uknowledge.uky.edu/kgs_mc)

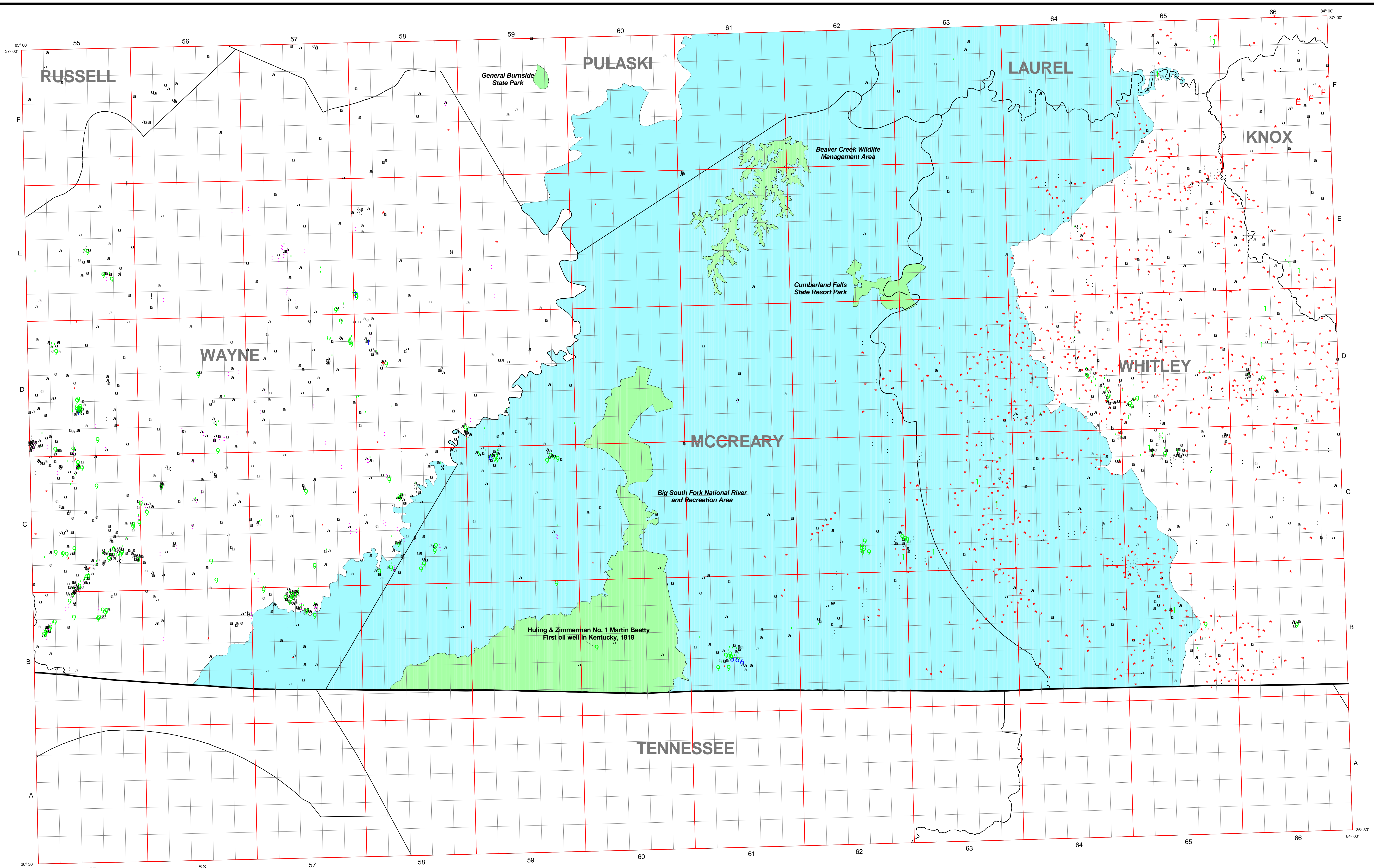
 Part of the [Geology Commons](#)

## Repository Citation

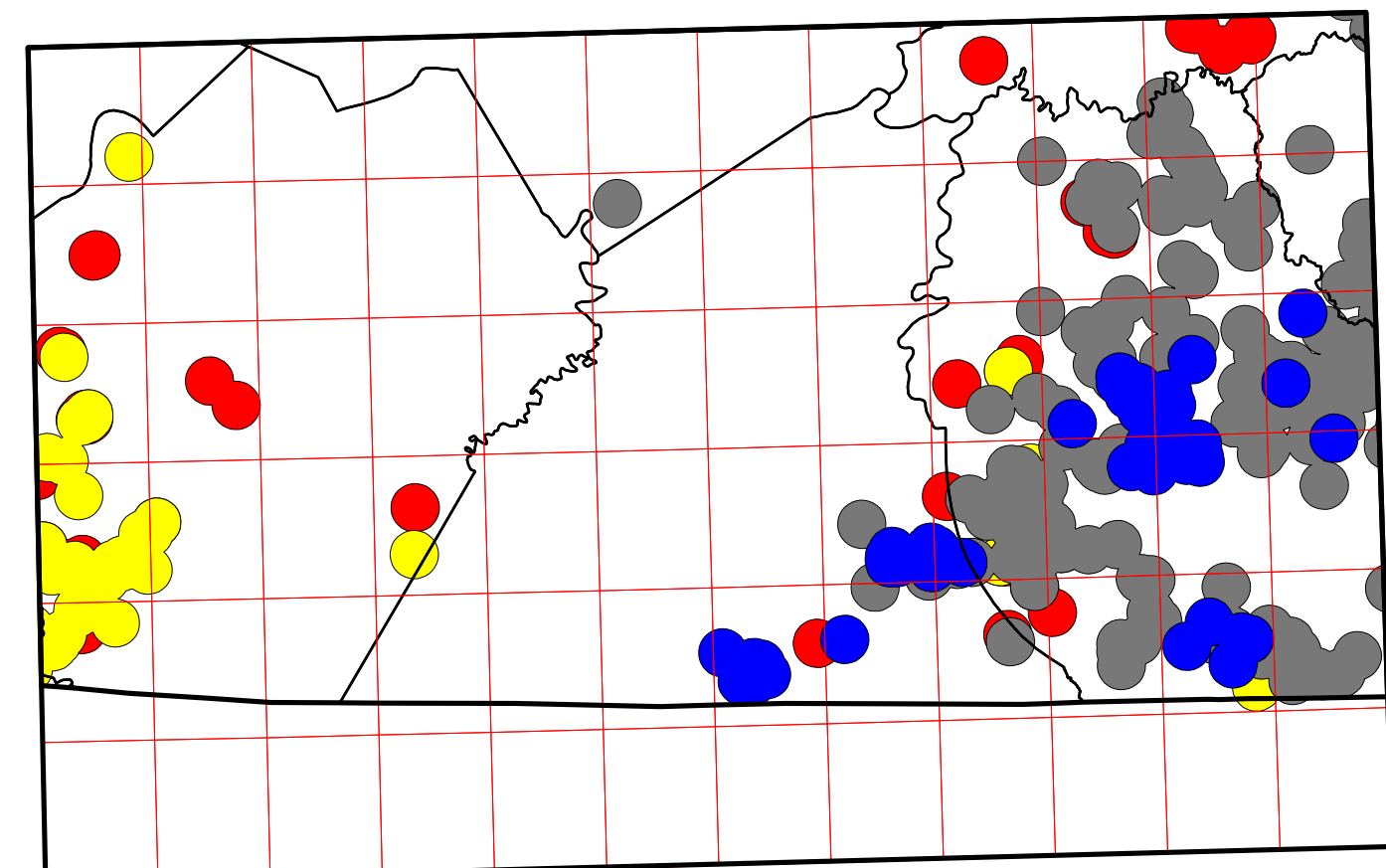
Nuttall, Brandon C., "Oil and Gas Map of the Corbin 30 x 60 Minute Quadrangle, Kentucky" (1999). *Kentucky Geological Survey Map and Chart*. 229.

[https://uknowledge.uky.edu/kgs\\_mc/229](https://uknowledge.uky.edu/kgs_mc/229)

This Map and Chart is brought to you for free and open access by the Kentucky Geological Survey at UKnowledge. It has been accepted for inclusion in Kentucky Geological Survey Map and Chart by an authorized administrator of UKnowledge. For more information, please contact [UKnowledge@lsv.uky.edu](mailto:UKnowledge@lsv.uky.edu).



**Generalized Distribution of Producing Wells, Excluding Mississippian Production**

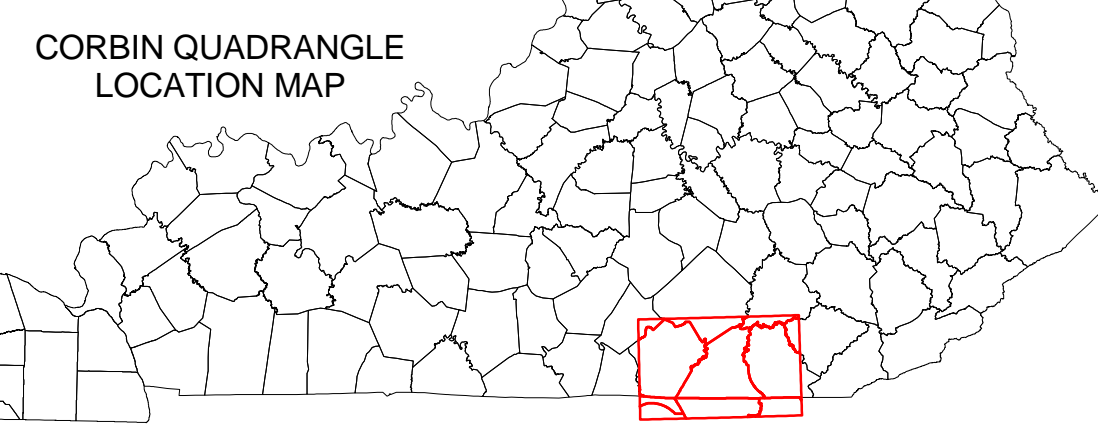
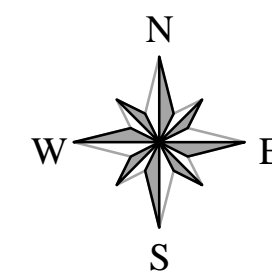
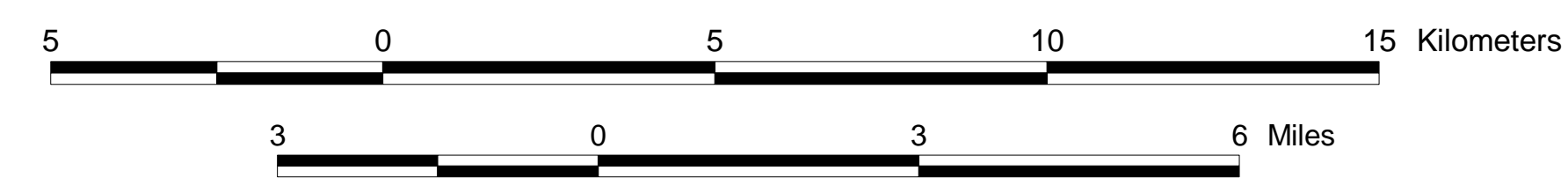


■ Devonian/Mississippian black shale  
 ■ Upper and Middle Ordovician carbonates  
 ■ Ordovician Knox Group

The general distribution is shown by constructing 1-mile-diameter buffers around producing wells. Colored areas are stacked in stratigraphic order; thus, in Carter coordinate section B-55, Ordovician Knox production underlies much of the Upper and Middle Ordovician production.

**OIL AND GAS MAP OF THE CORBIN  
 30 x 60 MINUTE QUADRANGLE, KENTUCKY**

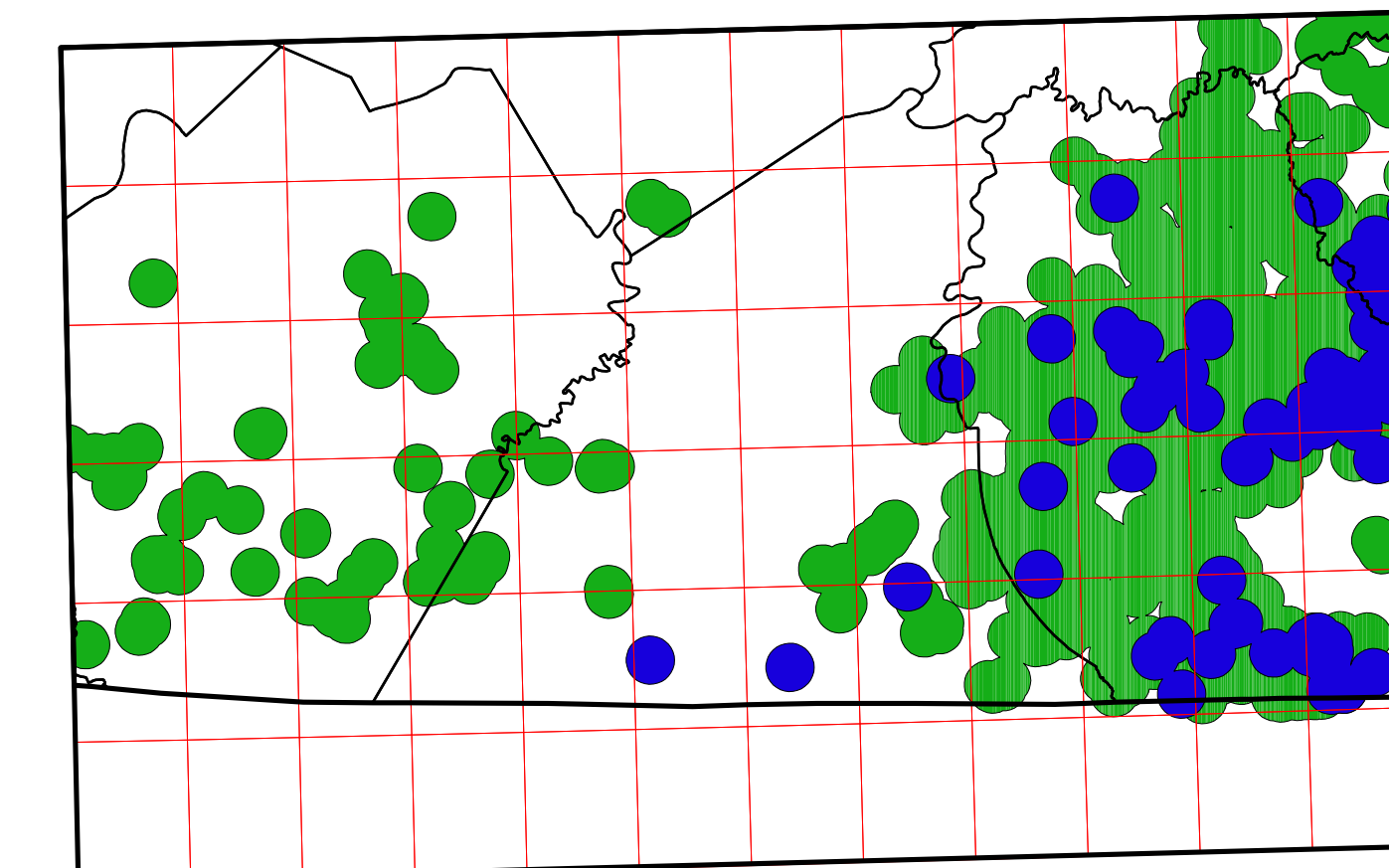
Compiled by Brandon C. Nuttall



- EXPLANATION**
- Oil and gas well locations
  - Oil well
  - Abandoned oil well
  - Combined oil and gas well
  - Gas well
  - Abandoned gas well
  - Gas storage well
  - Dry and abandoned well
  - Well location
  - Scanning project well location
  - Secondary recovery or injection well
  - Abandoned service well
  - Stratigraphic (core) test
  - 5-minute Carter coordinate section
  - 1-minute Carter coordinate section
  - County boundaries
  - State boundary
  - Forests and parks
  - Daniel Boone National Forest
  - Parks and recreational areas

This map was produced using the digital line graph (DLG) base map (1:100,000 scale, universal transverse Mercator, zone 16) available from the U.S. Geological Survey. Scanning project well locations have data gathered for archival purposes; minimal digital geologic and completion data for these wells are available. Digital oil and gas well location and completion data and copies of well records are available at the Kentucky Geological Survey, 228 Mining and Mineral Resources Building, University of Kentucky, Lexington, Kentucky 40506-0107, phone 606-257-5500.

**Generalized Distribution of Mississippian Producing Wells**



■ Mississippian sands  
 ■ Mississippian carbonate ("Big Lime")

The general distribution is shown by constructing 1-mile-diameter buffers around producing wells. Colored areas are stacked in stratigraphic order; thus, in Carter coordinate section B-55, Ordovician Knox production underlies much of the Upper and Middle Ordovician production.