



1998

# Oil and Gas Map of the Hazard 30 x 60 Minute Quadrangle, Kentucky

Brandon C. Nuttall

**Right click to open a feedback form in a new tab to let us know how this document benefits you.**

Follow this and additional works at: [https://uknowledge.uky.edu/kgs\\_mc](https://uknowledge.uky.edu/kgs_mc)



Part of the [Geology Commons](#)

---

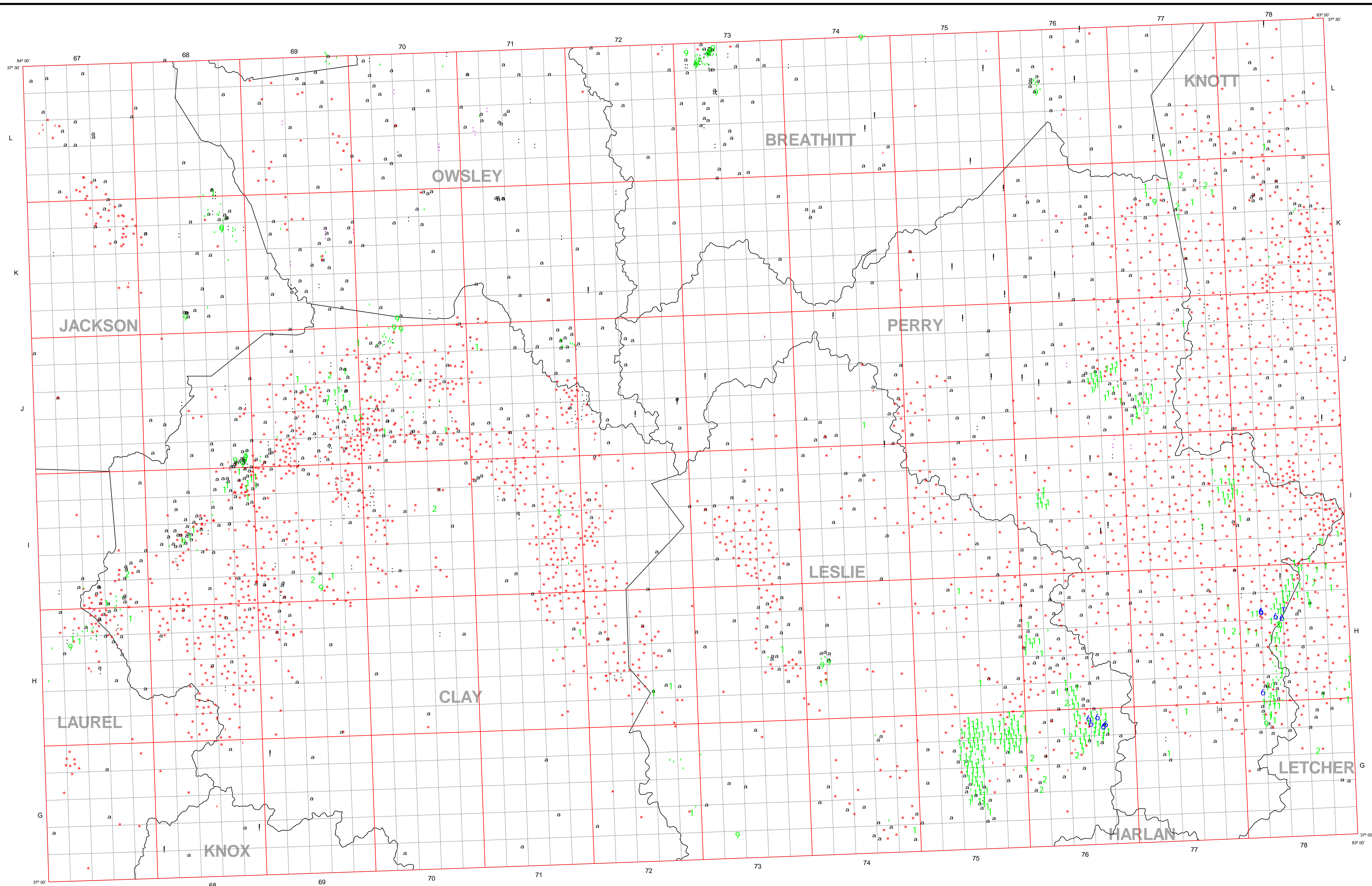
## Repository Citation

Nuttall, Brandon C., "Oil and Gas Map of the Hazard 30 x 60 Minute Quadrangle, Kentucky" (1998). *Kentucky Geological Survey Map and Chart*. 222.

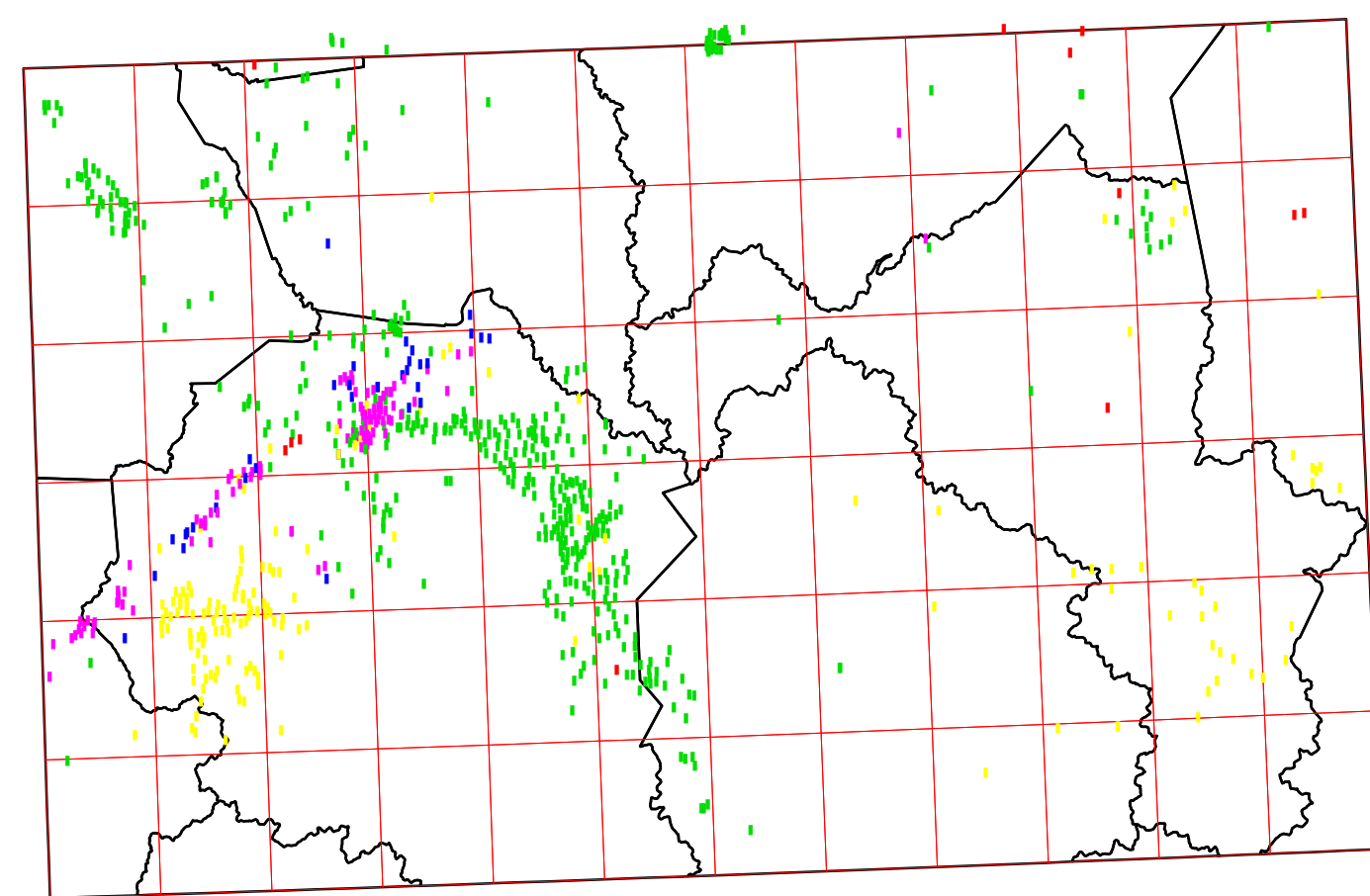
[https://uknowledge.uky.edu/kgs\\_mc/222](https://uknowledge.uky.edu/kgs_mc/222)

This Map and Chart is brought to you for free and open access by the Kentucky Geological Survey at UKnowledge. It has been accepted for inclusion in Kentucky Geological Survey Map and Chart by an authorized administrator of UKnowledge. For more information, please contact [UKnowledge@lsv.uky.edu](mailto:UKnowledge@lsv.uky.edu).





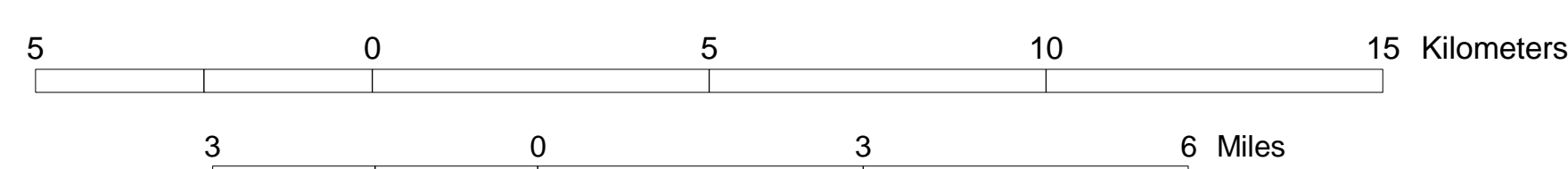
**Generalized Distribution of Production  
 Excluding Mississippian Carbonate and Devonian Shale Wells**



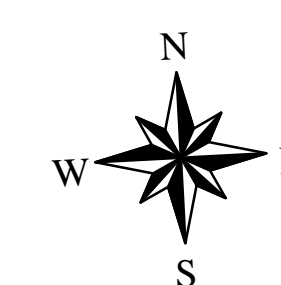
Scale 1:500,000  
 # Pennsylvania # Mississippian # "Corniferous"/"Big Six"  
 # Lexington # Knox

**OIL AND GAS MAP OF THE HAZARD  
 30 x 60 MINUTE QUADRANGLE, KENTUCKY**

Brandon C. Nuttall



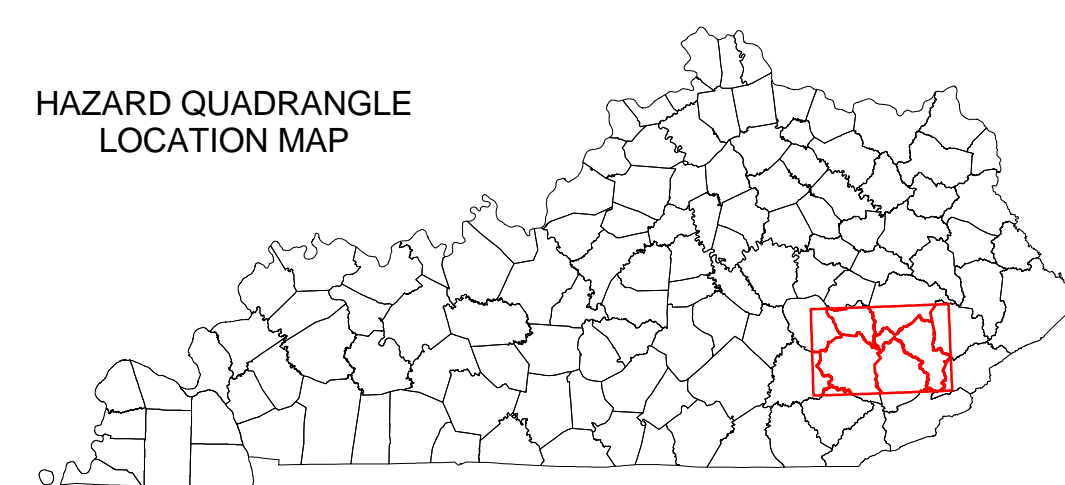
Scale 1:100,000



**EXPLANATION**

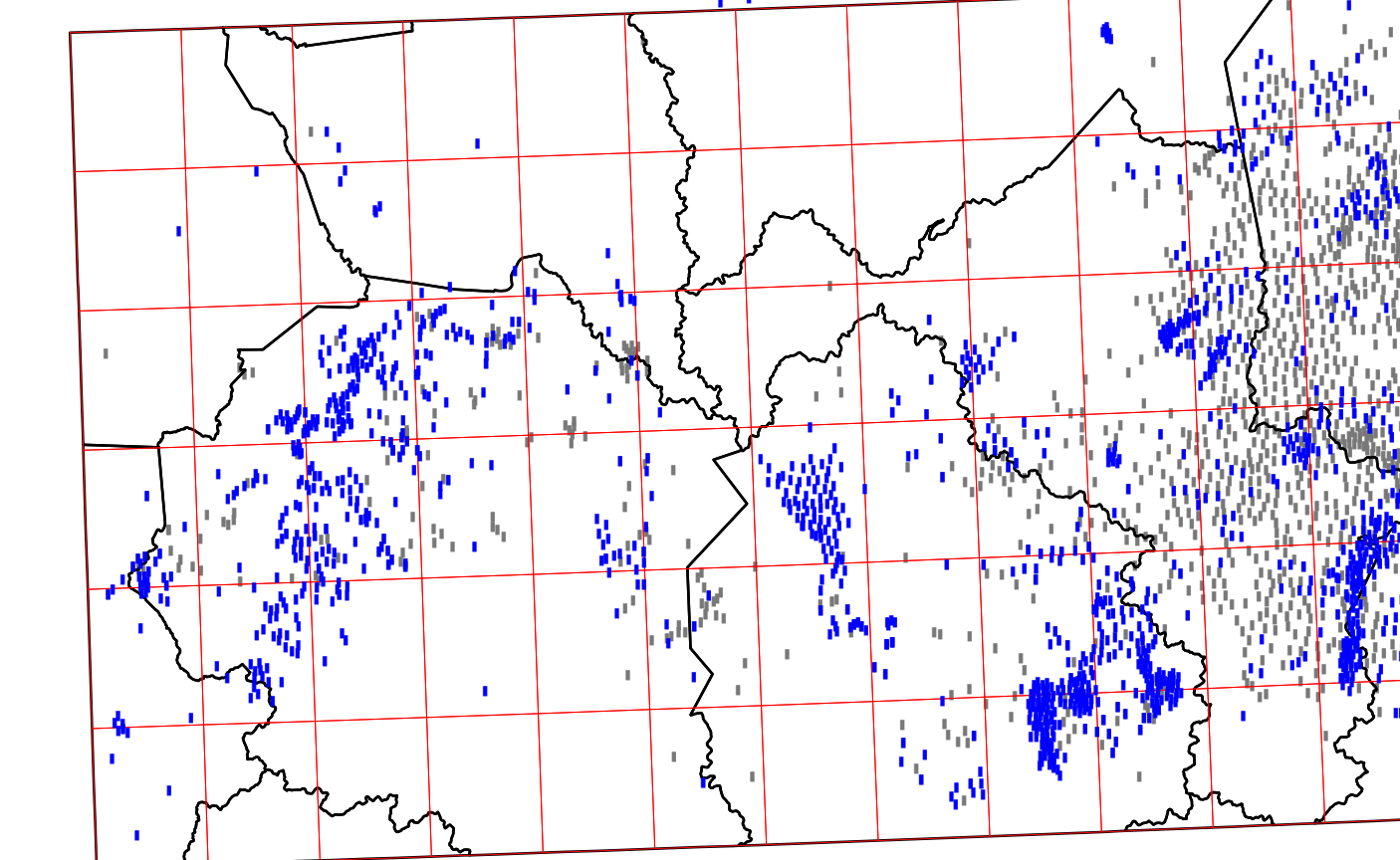
- Oil well
- 9 Abandoned oil well
- 1 Combined oil and gas well
- 2 Abandoned oil and gas well
- Gas well
- Abandoned gas well
- Dry and abandoned well
- Well location
- Scanning project location
- 6 Secondary recovery or injection well
- ! Abandoned service well
- ! Stratigraphic (core) test

**HAZARD QUADRANGLE  
 LOCATION MAP**



This map was produced using the digital line graph (DLG) base map (1:100,000 scale, universal transverse Mercator, zone 16) available from the U.S. Geological Survey. Scanning project locations are wells gathered for archival purposes; minimal digital geologic and completion data are available. Fault data are from the digital version of the 1:500,000-scale "Geologic Map of Kentucky" by M.C. Noger (1988, U.S. Geological Survey) and are supplied for reference only. Fault information does not comply with 1:100,000-scale map accuracy standards. Digital oil and gas well location and completion data and copies of well records are available at the Kentucky Geological Survey, 228 Mining and Mineral Resources Building, University of Kentucky, Lexington, Kentucky, phone 606-257-5500.

**Generalized Distribution of Production from  
 Mississippian Carbonate and Devonian Shale Wells**



Scale 1:500,000  
 # Mississippian carbonate # Devonian Ohio Shale  
 ("Big Lime")