



University of Kentucky
UKnowledge

Radiation Medicine Faculty Publications

Radiation Medicine

7-27-2018

The Impact of Serum Glucose, Anti-Diabetic Agents, and Statin Usage in Non-Small Cell Lung Cancer Patients Treated With Definitive Chemoradiation

Nick A. Iarrobino
University of Pittsburgh

Beant S. Gill
University of Pittsburgh

Mark E. Bernard
University of Kentucky, Mark.Bernard@uky.edu

Rainer J. Klement
Leopoldina Hospital, Germany

Maria Werner-Wasik
Thomas Jefferson University

See next page for additional authors

Follow this and additional works at: https://uknowledge.uky.edu/radmed_facpub

 [Click to open a feedback form in a new tab to let us know how this document benefits you.](#)

Part of the [Oncology Commons](#), and the [Radiology Commons](#)

Repository Citation

Iarrobino, Nick A.; Gill, Beant S.; Bernard, Mark E.; Klement, Rainer J.; Werner-Wasik, Maria; and Champ, Colin E., "The Impact of Serum Glucose, Anti-Diabetic Agents, and Statin Usage in Non-Small Cell Lung Cancer Patients Treated With Definitive Chemoradiation" (2018). *Radiation Medicine Faculty Publications*. 12.
https://uknowledge.uky.edu/radmed_facpub/12

This Article is brought to you for free and open access by the Radiation Medicine at UKnowledge. It has been accepted for inclusion in Radiation Medicine Faculty Publications by an authorized administrator of UKnowledge. For more information, please contact UKnowledge@lsv.uky.edu.

Authors

Nick A. Iarrobino, Beant S. Gill, Mark E. Bernard, Rainer J. Klement, Maria Werner-Wasik, and Colin E. Champ

The Impact of Serum Glucose, Anti-Diabetic Agents, and Statin Usage in Non-Small Cell Lung Cancer Patients Treated With Definitive Chemoradiation**Notes/Citation Information**

Published in *Frontiers in Oncology*, v. 8, article 281, p. 1-9.

Copyright © 2018 Iarrobino, Gill, Bernard, Klement, Werner-Wasik and Champ

This is an open-access article distributed under the terms of the [Creative Commons Attribution License \(CC BY\)](#). The use, distribution or reproduction in other forums is permitted, provided the original author(s) and the copyright owner(s) are credited and that the original publication in this journal is cited, in accordance with accepted academic practice. No use, distribution or reproduction is permitted which does not comply with these terms.

Digital Object Identifier (DOI)

<https://doi.org/10.3389/fonc.2018.00281>



The Impact of Serum Glucose, Anti-Diabetic Agents, and Statin Usage in Non-small Cell Lung Cancer Patients Treated With Definitive Chemoradiation

Nick A. Iarrobino¹, Beant S. Gill², Mark Bernard³, Rainer J. Klement⁴, Maria Werner-Wasik⁵ and Colin E. Champ^{2*}

¹ School of Medicine, University of Pittsburgh School of Medicine, Pittsburgh, PA, United States, ² Department of Radiation Oncology, University of Pittsburgh Medical Center, Pittsburgh, PA, United States, ³ Department of Radiation Medicine, University of Kentucky, Lexington, KY, United States, ⁴ Department of Radiation Oncology, Leopoldina Hospital, Schweinfurt, Germany, ⁵ Department of Radiation Oncology, Thomas Jefferson University Hospital, Philadelphia, PA, United States

OPEN ACCESS

Edited by:

John Varlotto,
University of Massachusetts Medical
School, United States

Reviewed by:

Eric Chi-ching Ko,
Weill Cornell Medicine, Cornell
University, United States
Vinay Sharma,
University of the Witwatersrand, South
Africa

*Correspondence:

Colin E. Champ
champce@upmc.edu

Specialty section:

This article was submitted to
Radiation Oncology,
a section of the journal
Frontiers in Oncology

Received: 04 April 2018

Accepted: 05 July 2018

Published: 27 July 2018

Citation:

Iarrobino NA, Gill BS, Bernard M, Klement RJ, Werner-Wasik M and Champ CE (2018) The Impact of Serum Glucose, Anti-Diabetic Agents, and Statin Usage in Non-small Cell Lung Cancer Patients Treated With Definitive Chemoradiation. *Front. Oncol.* 8:281. doi: 10.3389/fonc.2018.00281

Introduction: Epidemiologic data indicate diabetes confers an augmented risk of lung cancer development, yet the relationship between hyperglycemia, metabolic agents, and prognosis is unclear. We analyzed the impact of hyperglycemia, anti-diabetic agents, and statins on outcomes in non-small cell lung cancer (NSCLC) patients undergoing chemoradiation.

Method and Materials: In total, data from 170 patients with stage III NSCLC treated at the University of Pittsburgh Medical Center between 2001 and 2014 were obtained for analysis. Kaplan-Meier survival analysis was used to estimate time-to-event for overall survival (OS), disease-free survival, distant metastasis (DM), and loco-regional control (LRC). Blood glucose values ($n = 2870$), statins, and diabetic medications were assessed both continuously and categorically in univariable and multivariable Cox proportional hazard regression models to estimate hazard ratios and identify prognostic factors.

Results: Tumor volume was a negative prognostic factor for OS, disease-free survival, DM, and LRC ($p = 0.001$). Tumor stage and treatment time were associated with increased all-cause mortality. Any glucose measurement ≥ 130 mg/dl during treatment (2-year estimate 49.9 vs. 65.8%, $p = 0.095$) was borderline significant for decreased LRC, with similar trends on multivariable analysis (HR 1.636, $p = 0.126$) and for OS (HR 1.476, $p = 0.130$). Statin usage was associated with improved 2-year LRC (53.4 vs. 62.4%, $p = 0.088$) but not with improvements in survival. Other glycemic parameters, comorbid diabetes diagnosis, or anti-diabetic medications were not significantly associated with outcomes.

Conclusions: There were trends for blood glucose value over 130 mg/dl and statin nonuse being associated with inferior prognosis for LRC in stage III NSCLC patients; glycemic state, statin usage, and glucose-modulating medications were not associated with survival outcomes in multivariable analysis in this retrospective database.

Keywords: lung cancer, blood glucose, chemotherapy, radiation therapy, metformin, statins, tumor metabolism

INTRODUCTION

Lung cancer is the leading cause of cancer mortality globally (1). While non-small cell lung cancer (NSCLC) comprises 85% of lung cancer cases in the United States, survival rates remain dismal. The 5-year overall survival rate for NSCLC is 21% (2), illustrating the need for better treatment options.

Diabetes has been implicated as a risk factor for cancer development at multiple sites including the pancreas, esophagus, liver, colon, and breast (3, 4). Insulin, a mitogenic hormone, is elevated in the setting of type 2 diabetes. By both binding its receptor and increasing bioavailability of insulin-like growth factor 1 (IGF-1), these peptides are free to exhibit potent anti-apoptotic and cell proliferative effects. Additionally, given glucose's efficacy in stimulating expression of the insulin receptor (IR) as well as modulating its affinity for insulin, hyperglycemia, and hyperinsulinemia are speculated to promote cancer development and proliferation via activation of IR and downstream provocation of the PI3K-Akt-mTORC1 and MAPK pathways (5, 6). Furthermore, proliferation of lung cancer cells correlates with uptake of the glucose-based tracer [F-18] fluorodeoxyglucose during positron emission tomography (PET) scans (7). Yet, it remains unclear if an elevated blood glucose could enhance tumor metabolism and affect clinical outcomes in this manner.

Hyperglycemia has reliably been associated with a poorer prognosis in other cancers, yet the effect of hyperglycemia on survival in lung cancer patients undergoing definitive treatment with chemoradiation is unknown (8, 9). To our knowledge, only three studies have described the effect of fasting serum glucose on survival in NSCLC; all found elevated serum glucose levels to be associated with diminished overall survival (10–12). However, other studies have reported that diabetes-induced microangiopathy may protect vascular basal membranes from tumor cell digestion, thus interfering with neoplastic cell spread and improving survival (13).

Other data implicate the utilization of cholesterol for cancer metabolism, exemplified by associations between low serum cholesterol and protection from cancer development (14). Statins, which inhibit 3-hydroxy-3-methylglutaryl coenzyme A (HMG-CoA) reductase, exhibit pleiotropic effects. Experimental studies have demonstrated cytotoxic effects in cancer cells stemming from increased intracellular reactive oxygen species (ROS) production (15), altered protein expression (16, 17), and potential radiosensitizing effects (18). Simvastatin has been shown to decrease Bcl-2 expression, increase Bax protein expression, and halt G₁-S cell cycle progression in human lung cancer cells in a dose-dependent manner (19). Recent studies have revealed evidence for enhanced survival in statin users at various sites including prostate (20), colorectal (21), and breast cancer (22). We previously reported improved mortality and distant metastases in advanced-stage pancreatic cancer patients using statin medications (23).

The role hyperglycemia, antidiabetics, and statins play in lung cancer prognosis has not been fully elucidated. In this study, we examine the effect of serum glucose levels before, during, and after treatment, along with statins and anti-diabetic

medication exposure on overall survival, disease-free survival, distant metastasis, and loco-regional control in patients with stage III NSCLC treated with definitive chemoradiation.

MATERIALS AND METHODS

Patient Population

After institutional review board approval, we retrospectively evaluated the medical records of all patients diagnosed with stage III NSCLC, determined to have unresectable disease, and treated with definitive chemoradiation with curative intent at the University of Pittsburgh Medical Center between 2001 and 2014. Tumor staging was conducted in accordance with the American Joint Committee on Cancer (AJCC) seventh edition. Patients received daily radiotherapy treatment concurrently with platinum-based doublet chemotherapy.

Measures

Patient characteristics and clinical laboratory values were obtained from hospital records; including age, race, gender, pre-radiotherapy body mass index (BMI), comorbidities, medications, and chemotherapeutic agents. All serum glucose values available in the electronic medical record were initially collected. These values were non-fasting, random blood draws. In many cases glucose was assessed at numerous time points during the day and patients were therefore in differing glycemic states. To reduce the impact of this bias, we included all glucose values ($n = 2870$) spanning from 90 days prior to 90 days post chemoradiation for analysis. We then grouped these values into time points 1, 2, and 3, defined as within 90 days prior to radiotherapy, during radiotherapy, and within 90 days post-radiotherapy, respectively. Maximum, median, and minimum serum glucose values at the preceding time points were analyzed as continuous variables in univariable analysis with respect to overall survival, disease-free survival, distant metastasis, and loco-regional control.

Additionally, at each time point we stratified the maximum blood glucose value achieved into four levels: ≥ 130 mg/dl, ≥ 150 mg/dl, ≥ 175 mg/dl, and ≥ 200 mg/dl. Values were selected based on normal lab cutoff values, previous results (10), and to provide ample data points for thorough analysis. Univariable Cox regression was again conducted to assess the effect maximum blood glucose value has on our primary outcomes of interest. Serum blood glucose at the aforementioned time points was considered the main prognostic factor of interest.

Prior literature has recommended the use of a lag period in observational cancer studies (24), after which patients switch from the non-exposed to exposed group. Similar reports have found a lag period of 6 months to be an appropriate time span (21), and to mitigate risk of reverse-causation bias, we considered patients in the statin exposure group after 6 months of continuous statin therapy. Previous studies have collected cumulative statin dose in order to evaluate the prospect of a dose-response relationship between dose and cancer-specific outcomes (25). Furthermore, earlier investigations have explored various pharmacologic properties of individual statin agents, namely potency and lipophilicity status, as potential factors influencing

clinical outcomes at other sites (26). To evaluate these potential relationships in NSCLC patients we collected simvastatin and atorvastatin dosages, standardized to simvastatin equivalents, and stratified dosages into intensity interval groups. However, as simvastatin was the predominant prescription agent, and statin doses were sporadically recorded, they were excluded from analysis, and stratification of therapeutic agents for individual analysis was omitted.

Statistical Analysis

Overall survival, disease-free survival, freedom from distant metastasis, and loco-regional control were the primary outcomes measured. Loco-regional control was defined as the absence of disease progression seen on follow-up imaging or primary and/or regional lymph node biopsy. Kaplan-Meier survival analysis was conducted to estimate the actuarial event probability for each outcome. Select variables were assessed, including patient characteristics, comorbidities, medications, tumor characteristics, radiation therapy planning details, and treatment time. Those achieving or approaching statistical significance on univariable survival analysis ($p < 0.10$) were considered for multivariable Cox regression while additionally including any glucose measurement ≥ 130 during RT and glucocorticoid use as main variables of interest. In addition, given recent findings that glucocorticoids increase radioresistance in glioblastoma cells and given their property to elevate blood glucose levels, we included glucocorticoid usage in all multivariable models besides a measure of blood glucose (27, 28). Hazard ratios were then calculated to determine the magnitude of the effect. P -values < 0.05 and < 0.1 were considered as statistically “significant” and “trending”, respectively. All statistical analyses were done using IBM SPSS Statistics Version 23 (IBM, Armonk, NY).

RESULTS

Patient Characteristics

We identified 576 patients with newly diagnosed stage IIIA or IIIB NSCLC, among which those treated surgically ($n = 28$) or with palliative intent ($n = 296$) were excluded. Patients receiving radiation therapy without concurrent chemotherapy ($n = 39$) were also excluded. Of the remaining 213 patient cohort, 43 patients were lost to follow up directly after treatment, leaving 170 patients. Our study cohort was composed of 110 males (64.7%) and 60 females (35.3%). The median age of subjects included for analysis was 67 years. The majority of patients were diagnosed with stage IIIA NSCLC (57.6%) and received chemotherapy as carboplatin-paclitaxel (87.6%). Associated major comorbid states in this cohort were as follows: diabetes mellitus (28.2%), coronary artery disease (11.2%), hyperlipidemia (31.8%), and hypertension (44.7%). Comorbidity prevalence in this cohort was comparable to a recent population based study reporting major comorbidity prevalence in the United States (29). A detailed description of patient, disease, and treatment characteristics is presented in **Table 1**.

Median blood glucose values per patient did not substantially change throughout the course of treatment. Among individual patient median glucose values, the median measurements within

TABLE 1 | Patient, disease and treatment characteristics ($n = 170$).

PATIENT CHARACTERISTICS	
Age, years Median (range)	67 (38–91)
GENDER	
Male	110 (64.7%)
Female	60 (35.3%)
Race	
Caucasian	137 (80.6%)
African American	33 (19.4%)
Body mass index	
Median (range)	26.2 (16.0–55.1)
Normal	33%
High	62%
Comorbidities	
Diabetes	48 (28.2%)
Coronary artery disease	19 (11.2%)
Hyperlipidemia	54 (31.8%)
Hypertension	76 (44.7%)
Medications taken at the time of treatment	
Metformin	9 (5.3%)
Sulfonylurea	9 (5.3%)
Insulin	44 (25.9%)
Statin	53 (31.2%)
Glucocorticoid	72 (42.4%)
DISEASE CHARACTERISTICS	
Histology	
Squamous cell	54 (31.8%)
Adenocarcinoma	77 (45.3%)
Large cell neuroendocrine	10 (5.9%)
Mixed	2 (1.2%)
Not otherwise specified	27 (15.9%)
T stage	
T0	16 (9.4%)
T1	32 (18.8%)
T2	53 (31.2%)
T3	26 (15.3%)
T4	43 (25.3%)
N stage	
N0	10 (5.9%)
N1	6 (3.5%)
N2	102 (60.0%)
N3	52 (30.6%)
AJCC stage (7th edition)	
IIIA	98 (57.6%)
IIIB	72 (42.4%)
TREATMENT CHARACTERISTICS	
Chemotherapy regimen	
Carboplatin/paclitaxel	149 (87.6%)
Cisplatin/etoposide	5 (2.9%)
Carboplatin/pemetrexed	2 (1.2%)
Carboplatin/etoposide	5 (2.9%)
Carboplatin/docetaxel	3 (1.8%)

(Continued)

TABLE 1 | Continued

PATIENT CHARACTERISTICS	
Cisplatin/docetaxel	3 (1.8%)
Carboplatin/nab-paclitaxel	1 (0.6%)
Cisplatin/gemcitabine	1 (0.6%)
Unknown	1 (0.6%)
Radiation technique	
3D conformal	117 (68.8%)
IMRT	48 (28.2%)
Unknown	5 (2.9%)
GTV volume (cc)	
Median (range)	84.7 (4.4–586.4)
PTV volume (cc)	
Median (range)	340.0 (43.0–1303.0)
Cumulative radiation dose (Gy)	
Median (IQR range)	72 (68.4–77.3)
Dose per fraction (Gy/fraction)	
Median (IQR range)	2.0 (2.0–2.1)
Number of elapsed days for radiation treatment	
Median (IQR range)	52 (49–56)

90 days prior to radiation, during radiation, and within 90 days post-radiation therapy were 106.8 mg/dl, 106.0 mg/dl, and 111.0 mg/dl, respectively (Table 2).

Univariable Analyses

With a median follow up time of 24.2 months (range, 3.2–148.4), the 2-year Kaplan-Meier estimates were as follows: locoregional control 56.5% (95% CI 48.3–64.7%), distant metastasis rate 54.8% (95% CI 46.4–63.2%), disease-free survival 30.6% (95% CI 23.5–37.7%), and overall survival 55.1% (95% CI, 47.5–62.7%) (Figure 1A).

Gross tumor volume (GTV) and planning target volume (PTV) were consistent significant predictors associated with all outcomes as continuous variables (Table 3). Patients with any blood glucose value ≥ 130 mg/dL during treatment trended toward worse locoregional control (2-year estimate 49.9 vs. 65.8%, $p = 0.095$) (Figure 1B). No other glucose parameters (median, minimum, maximum, or any value with variable cut-offs) were significantly associated with outcomes. Other significant associations included prolonged treatment time with inferior overall survival (unadjusted HR 1.020, $p = 0.044$), stage IIIB disease with inferior disease-free survival (43.1 vs. 63.6%, $p = 0.021$) and overall survival (26.4 vs. 33.6%, $p = 0.085$), and glucocorticoid usage during treatment with improved overall survival (59.1 vs. 51.4%, $p = 0.056$). No other glucose-modulating medications were significantly associated with outcomes.

In unadjusted analysis (Table 3), baseline statin use was not associated with enhanced overall survival ($p = 0.673$), freedom from distant metastasis ($p = 0.448$), or disease-free survival ($p = 0.636$). Baseline statin usage trended with improved 2-year locoregional control (53.4 vs. 62.4%, $p = 0.088$).

Multivariable Analyses

Significant variables from univariable analysis plus the main variables of interest were subjected to multivariable Cox regression to identify independent prognostic factors. After controlling for other potential confounding variables, increasing PTV volume was correlated with inferior outcomes for all endpoints (Table 4). Having any glucose measurement ≥ 130 mg/dL during chemoradiotherapy was associated with inferior outcomes, reaching borderline significance for locoregional control (adjusted HR 1.636, $p = 0.126$) and overall survival (adjusted HR 1.476, $p = 0.130$).

DISCUSSION

In this retrospective-cohort study, we assessed the effect blood glucose, anti-diabetics, and statin medications may have on outcomes in newly diagnosed stage III NSCLC patients. Using our retrospective data set with an extensive number of glucose values, we observed that a glucose value ≥ 130 mg/dL trended with diminished locoregional control and overall survival, while statin usage trended with improved locoregional control. We were otherwise unable to establish a substantial relationship between blood glucose, anti-diabetic medication, or statin use and any of the aforementioned time points and cancer-specific outcomes. To our knowledge, this is the largest study to explore these interactions in a strict NSCLC cohort.

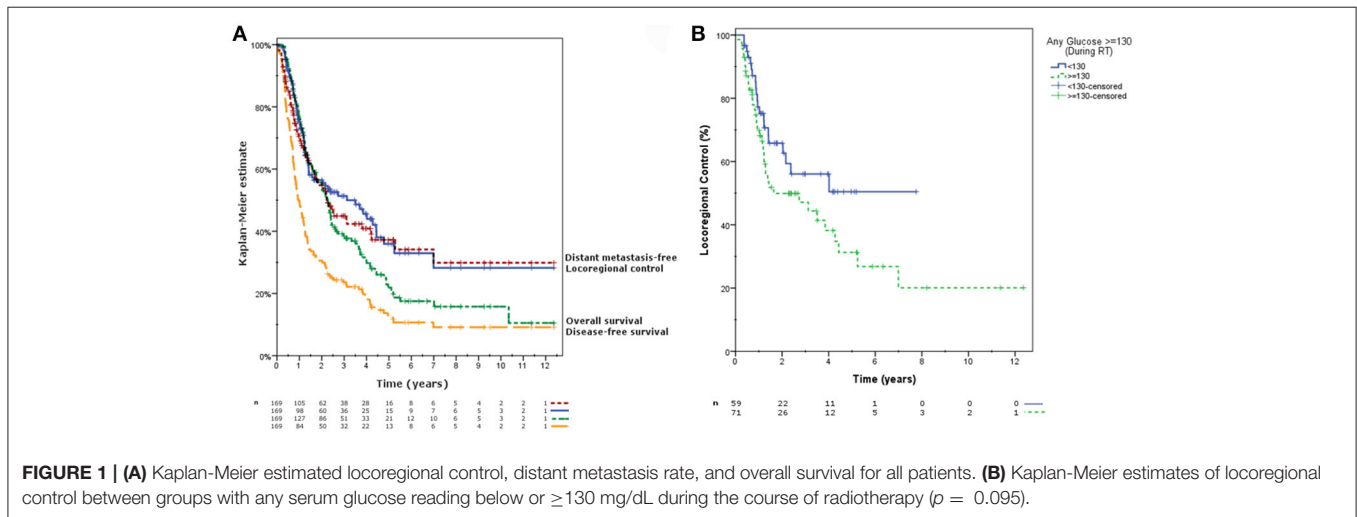
As expected, tumor stage and size were significant prognostic factors, and prolonged treatment time was associated with increased mortality, all of which have been shown to correlate with poorer outcomes previously (30, 31). In addition, contrary to other data, body mass index was not associated with prognosis in this cohort (32). Although our data suggest that glucocorticoid usage at or before diagnosis may be associated with improved overall survival, this was not supported in multivariable analysis and may have simply been an artifact of the data.

A growing body of literature suggests that hyperglycemia may behave as a prognostic factor in cancer outcomes, including in cancer sites like high-grade gliomas, which has been inversely proportional to serum glucose in multiple studies (33–36). Early investigations exploring the relationship between diabetes and overall survival in NSCLC reported longer survival times in patients with diabetes (37), based on work suggesting that diabetic microangiopathy may prevent the spread of tumor cells (13). More recent literature yields evidence for positive (38), negative (10, 39), and non-significant negative associations (40) between diabetes and survival. We observed no relationship between diabetes and overall survival nor distant metastasis, suggesting that there is no clear evidence to support microangiopathy as a contributory factor to protection against degradative tumor enzymes and distant metastasis.

Preclinical data demonstrates that inhibition of PI3K (41), Akt (42), and mTOR (43) via molecular antagonists reduces tumor growth and proliferation in murine models. Hyperglycemia enhances WNT/ β -catenin signaling in tumor cells (44), which is associated with chemo- and radiotherapy resistance in NSCLC (45). While preclinical data suggest that cancer treatment may be

TABLE 2 | Glucose values (*n* = 2870) measured prior to, during and after chemoradiation.

	Within 90 days prior to radiation	During radiation	Within 90 days after radiation
Number of glucose measurements per patient			
Median (range), mg/dL	2 (0–67)	6 (0–43)	3 (0–124)
Median glucose measurement per patient			
Median (range), mg/dL	106.8 (52.5–269.0)	106.0 (79.0–317.0)	111.0 (63.0–241.9)
Minimum glucose measurement per patient			
Median (range), mg/dL	95.0 (47.0–168.0)	91.0 (57.0–237.0)	94.5 (36.0–172.0)
Maximum glucose measurement per patient			
Median (range), mg/dL	120.5 (81.0–500.0)	132.0 (88.0–355.0)	138.0 (82.0–469.0)
Number of patients with any glucose value:			
≥130 mg/dL, <i>n</i> (%)	50 (29.4%)	60 (35.3%)	58 (34.1%)
≥150 mg/dL, <i>n</i> (%)	32 (18.8%)	50 (29.4%)	49 (28.8%)
≥175 mg/dL, <i>n</i> (%)	23 (13.5%)	30 (17.6%)	35 (20.6%)
≥200 mg/dL, <i>n</i> (%)	18 (10.6%)	17 (10.0%)	26 (15.3%)



enhanced via inhibiting these proteins with antagonist molecules, downregulation by means of intense lifestyle changes, dietary alterations, or modulation of insulin/glucose through diabetic medication remains less clear in practice (5, 6). In other sites blood glucose and/or insulin reduction via metformin, or a ketogenic diet is being attempted to potentially offset these glucose-fueled pathways (46–49). Still, preclinical data reveal that tumors with PI3K activation may be resistant to dietary restriction (50). While metformin usage has been associated with improvements in survival in advanced stage lung cancer patients, our data revealed no apparent benefit (51).

In contrast to earlier findings (10), we did not observe a relationship between serum glucose and survival after comprehensive statistical analysis, except for borderline significance in univariable analysis. The reasons for this are less clear, however, Luo et al. noted that 82.8% of their study population consisted of advanced stage (stage IIIB or IV) NSCLC patients in comparison to our 42.4% stage IIIB population. Advanced stage disease could correlate with insulin resistance

and hence increased blood glucose, a phenomena of metabolic dysregulation and cachexia that is not uncommon in these patients (52). Another possible explanation for these differing results may be a lack of adequate data points in the preceding study, with the present study assessing 2870 glucose values versus 342 in the other. Moreover, the above study also failed to account for glucocorticoid usage, which would be required in patients presenting with severe disease symptoms, thus offering a considerable confounding factor.

Data on the benefit of statins in improving outcomes in lung cancer patients remain mixed. Similar to our study, a recent phase II clinical trial in 106 advanced-stage NSCLC (stage IIIB or IV) revealed a weak, non-significant survival improvement in a group that received gefitinib plus simvastatin compared to gefitinib alone (53). A retrospective study revealed survival benefits from statin usage in epidermal growth factor positive NSCLC, however, they did not account for reverse-causation bias (54). Another population-based cohort study noted a 12% reduction in the rate of lung-cancer specific mortality in NSCLC and small cell

TABLE 3 | Univariable survival analysis for various endpoints (*Kaplan Meier survival differences and/or Cox regression hazard ratios included for significant or borderline significant results*).

	Locoregional control <i>p</i> (2y estimate/HR)	Distant metastasis <i>p</i> (2y estimate/HR)	Overall survival <i>p</i> (2y estimate/HR)	Disease-free survival <i>p</i> (2y estimate/HR)
Age (continuous)	0.642	0.477	0.609	0.811
Gender	0.139	0.780	0.424	0.486
Race	0.797	0.549	0.813	0.697
BMI (continuous)	0.136	0.269	0.780	0.543
Comorbidities				
Diabetes	0.132	0.833	0.808	0.650
Coronary artery disease	0.257	0.523	0.706	0.772
Hyperlipidemia	0.180	0.509	0.337	0.671
Hypertension	0.532	0.847	0.807	0.434
Medications				
Metformin	0.293	0.650	0.206	0.808
Sulfonylurea	0.182	0.711	0.406	0.653
Insulin	0.171	0.650	0.738	0.851
Statin	0.088 (53.4 vs. 62.4%)	0.448	0.673	0.636
Glucocorticoid	0.200	0.944	0.056 (51.4 vs. 59.1%)	0.297
Histology	0.668	0.561	0.720	0.425
Stage	0.929	0.105	0.021 (63.6 vs. 43.1%)	0.085 (33.6 vs. 26.4%)
Radiation Technique	0.778	0.674	0.319	0.895
GTV volume (continuous)	0.006 (HR 1.004)	0.012 (HR 1.003)	0.002 (HR 1.003)	0.001 (HR 1.003)
PTV volume (continuous)	0.003 (HR 1.002)	<0.001 (HR 1.002)	<0.001 (HR 1.002)	<0.001 (HR 1.002)
Cumulative radiation dose (continuous)	0.826	0.534	0.781	0.734
Number of elapsed days on treatment (continuous)	0.539	0.893	0.044 (HR 1.020)	0.447
Median glucose value (continuous)				
Pre-treatment	0.397	0.541	0.463	0.392
During treatment	0.488	0.691	0.593	0.977
Post-treatment	0.317	0.520	0.346	0.762
Minimum glucose value (continuous)				
Pre-treatment	0.480	0.206	0.366	0.494
During treatment	0.394	0.506	0.745	0.616
Post-treatment	0.161	0.686	0.296	0.676
Maximum glucose value (continuous)				
Pre-treatment	0.369	0.842	0.297	0.306
During treatment	0.940	0.675	0.331	0.459
Post-treatment	0.819	0.498	0.530	0.821
Any pre-treatment glucose value				
≥130 mg/dL	0.630	0.874	0.847	0.734
≥150 mg/dL	0.443	0.974	0.757	0.531
≥175 mg/dL	0.110	0.765	0.168	0.156
≥200 mg/dL	0.234	0.930	0.338	0.306
Any treatment glucose value				
≥130 mg/dL	0.095 (49.9 vs. 65.8%)	0.493	0.939	0.840
≥150 mg/dL	0.643	0.666	0.595	0.797
≥175 mg/dL	0.321	0.877	0.396	0.570
≥200 mg/dL	0.386	0.518	0.918	0.878
Any post-treatment glucose value				
≥130 mg/dL	0.958	0.390	0.274	0.518
≥150 mg/dL	0.829	0.451	0.138	0.560
≥175 mg/dL	0.564	0.911	0.976	0.506
≥200 mg/dL	0.704	0.680	0.920	0.750

Bold values statistically significant.

TABLE 4 | Multivariable Cox regression survival analyses using forward conditional analysis ($p < 0.10$ for model inclusion).

Variable	Adjusted HR (95% CI)	p
LOCOREGIONAL CONTROL		
PTV volume (cc)	1.002 (1.001–1.003)	0.002
Glucose measurement ≥ 130 during RT	1.636 (0.871–3.070)	0.126
Glucocorticoid use	0.786 (0.430–1.436)	0.434
Statin use	0.806 (0.423–1.536)	0.512
DISTANT METASTASIS-FREE		
PTV volume (cc)	1.002 (1.001–1.003)	<0.001
Glucose measurement ≥ 130 during RT	1.301 (0.739–2.289)	0.362
Glucocorticoid use	1.000 (0.573–1.746)	1.000
Stage		
IIIA	1.000 (Reference)	
IIIB	0.722 (0.371–1.406)	0.338
OVERALL SURVIVAL		
PTV volume (cc)	1.001 (1.000–1.002)	0.007
Glucose measurement ≥ 130 during RT	1.476 (0.892–2.442)	0.130
Glucocorticoid use	0.640 (0.385–1.063)	0.085
Stage		
IIIA	1.000 (Reference)	
IIIB	1.460 (0.846–2.519)	0.174
Treatment duration (days)	1.019 (0.988–1.050)	0.229
Radiation dose (Gy)	0.966 (0.921–1.013)	0.155
DISEASE-FREE SURVIVAL		
PTV volume (cc)	1.002 (1.001–1.003)	<0.001
Glucose measurement ≥ 130 during RT	1.112 (0.706–1.750)	0.646
Glucocorticoid use	0.890 (0.569–1.391)	0.608
Stage		
IIIA	1.000 (Reference)	
IIIB	1.297 (0.802–2.096)	0.289

Bold values statistically significant.

cancer patients using statins before diagnosis, including a trend in the reduction of lung-cancer specific mortality with statin use after diagnosis (55).

Small cell lung cancer malignancies are significantly more radiosensitive, and statins impede progression from G₁-S in the cell cycle, potentially explaining the discrepancy between results (56). On a cellular level, these changes would confer a potential radiosensitizing effect to act synergistically with local treatment and potentially enhance radiation response. Furthermore, statins can mimic mutant p53 depletion and arrest cells in G₁ by halting cell cycle progression, both of which may enhance radiosensitizing effects (57–59).

We cannot infer whether these mechanisms would influence our results as well, but the finding that statin usage was associated with improved locoregional control ($p = 0.088$ in univariable analysis) would be consistent with them.

Inherent to observational studies, the risk of both confounding and reverse-causation bias is present in our study. By utilizing a 6-month lag period we have attempted to alleviate some risk of reverse-causation producing erroneous results. As with all observational studies, and even randomized controlled trials (60), eliminating potential confounders in their

entirety is not possible. Nonetheless we attempted to control for putative prognostic factors by including all variables achieving or approaching significance at the $p = 0.10$ level in multivariable Cox regression in addition to the main variables of interest (hyperglycemia and glucocorticoid usage). Statin agent dosages were seldom recorded, and we were therefore unable to establish a dose-response relationship. However, recent large analyses (25) have been unsuccessful in establishing this dose-response relationship, suggesting that statin exposure and survival may be a binary relationship, if present. Furthermore, our results may be limited by the fact that patients were not necessarily fasting when glucose labs were drawn; we attempted to mitigate this by assessing an extensive amount of glucose values around the time of treatment, totaling 2870, and representing the greatest number of data points per patient in a study of this kind. It should be noted that at least one study has shown cancer patients with a comorbid diabetes diagnosis to be treated less aggressively than their healthy counterparts (61). This potential bias is unlikely to be present as all patients in this study received similar aggressive treatment. The extensive random sampling within our patient set assessed purely serum glucose levels regardless of a diabetes diagnosis. Along these lines, the large number of glucose values and extensive statistical assessment of competing variables remains a strength of this analysis.

CONCLUSION

Glucose levels, anti-diabetic medications, and statin usage were not associated with overall survival, disease-free survival, distant metastases, or loco-regional control in a robust retrospective database of NSCLC patients treated with definitive chemoradiation. While a blood glucose value over 130 mg/dl trended toward a consistent association with inferior outcomes, reaching borderline significance for locoregional control and overall survival, and statin usage trended with improved locoregional control, glycemic state, statins, and glucose-modulating medication usage was not associated with outcomes in multivariable analysis. Prognosis in NSCLC patients may be less related to metabolic factors than other cancer sites, but high quality prospective studies are further needed to elucidate the relationship between glycemic state and outcomes in NSCLC patients.

AUTHOR CONTRIBUTIONS

NI data collection and analysis, manuscript creation and editing; BG data analysis and statistics, manuscript editing, project design; MB data collection and review, manuscript editing; RK statistics, manuscript creation and editing; MW-W manuscript editing and project design; CC data analysis, manuscript creation, and editing, project design.

FUNDING

Research reported in this publication was supported by the National Institute of Health grant award number T35DK065521.

REFERENCES

- Torre LA, Bray F, Siegel RL, Ferlay J, Lortet-Tieulent J, Jemal A. Global cancer statistics, 2012. *Cancer J Clin.* (2015) 65:87–108. doi: 10.3322/caac.21262
- Miller KD, Siegel RL, Lin CC, Mariotto AB, Kramer JL, Rowland JH. Cancer treatment and survivorship statistics, 2016. *CA Cancer J Clin.* (2016) 66:271–89. doi: 10.3322/caac.21349
- Jee SH, Ohrr H, Sull JW, Yun JE, Ji M, Samet JM. Fasting serum glucose level and cancer risk in Korean men and women. *JAMA* (2005) 293:194–202. doi: 10.1001/jama.293.2.194
- La Vecchia C, Negri E, Decarli A, Franceschi S. Diabetes mellitus and colorectal cancer risk. *Cancer Epidemiol Biomarkers Prev.* (1997) 6:1007–10.
- Klement RJ, Champ CE. Calories, carbohydrates, and cancer therapy with radiation: exploiting the five R's through dietary manipulation. *Cancer Metastasis Rev.* (2014) 33:1–13. doi: 10.1007/s10555-014-9495-3
- Champ CE, Baserga R, Mishra MV, Jin L, Sotgia F, Lisanti MP. Nutrient restriction and radiation therapy for cancer treatment: when less is more. *Oncologist* (2013) 18:97–103. doi: 10.1634/theoncologist.2012-0164
- Vesselle H, Schmidt RA, Pugsley JM, Li M, Kohlmyer SG, Vallieres E, et al. Lung cancer proliferation correlates with [F-18]fluorodeoxyglucose uptake by positron emission tomography. *Clin Cancer Res.* (2000) 6:3837–44.
- Peairs KS, Barone BB, Snyder CF, Yeh HC, Stein KB, Derr RL. Diabetes mellitus and breast cancer outcomes: a systematic review and meta-analysis. *J Clin Oncol.* (2011) 29:40–6. doi: 10.1200/JCO.2009.27.3011
- Hickish T, Astras G, Thomas P, Penfold S, Purandare L, Hickish TF. Glucose intolerance during adjuvant chemotherapy for breast cancer. *J Natl Cancer Inst.* (2009) 101:537. doi: 10.1093/jnci/djp025
- Luo J, Chen Y-J, Chang L-J. Fasting blood glucose level and prognosis in non-small cell lung cancer (NSCLC) patients. *Lung Cancer* (2012) 76:242–7. doi: 10.1016/j.lungcan.2011.10.019
- Kurishima K, Watanabe H, Ishikawa H, Satoh H, Hizawa N. Survival of patients with lung cancer and diabetes mellitus. *Mol Clin Oncol.* (2017) 6:907–10. doi: 10.3892/mco.2017.1224
- Maestu I, Pastor M, Gómez-Codina J, Aparicio J, Oltra A, Herranz C. Pretreatment prognostic factors for survival in small-cell lung cancer: a new prognostic index and validation of three known prognostic indices on 341 patients. *Ann Oncol Off J Eur Soc Med Oncol.* (1997) 8:547–53.
- Nerlich AG, Hagedorn HG, Böheim M, Schleicher ED. Patients with diabetes-induced microangiopathy show a reduced frequency of carcinomas. *In Vivo* (1998) 12:667–670.
- Neaton JD, Blackburn H, Jacobs D, Kuller L, Lee DJ, Sherwin R. Serum cholesterol level and mortality findings for men screened in the Multiple Risk Factor Intervention Trial. Multiple Risk Factor Intervention Trial Research Group. *Arch Intern Med.* (1992) 152:1490–500.
- Qi XF, Zheng L, Lee KJ, Kim DH, Kim CS, Cai DQ. HMG-CoA reductase inhibitors induce apoptosis of lymphoma cells by promoting ROS generation and regulating Akt, Erk and p38 signals via suppression of mevalonate pathway. *Cell Death Dis.* (2013) 4:e518. doi: 10.1038/cddis.2013.44
- Warita K, Warita T, Beckwith CH, Schurdak ME, Vazquez A, Wells A. Statin-induced mevalonate pathway inhibition attenuates the growth of mesenchymal-like cancer cells that lack functional E-cadherin mediated cell cohesion. *Sci Rep.* (2015) 4:7593. doi: 10.1038/srep07593
- Pelaia G, Gallelli L, Renda T, Fratto D, Falcone D, Caraglia M. Effects of statins and farnesyl transferase inhibitors on ERK phosphorylation, apoptosis and cell viability in non-small lung cancer cells. *Cell Prolif.* (2012) 45:557–65. doi: 10.1111/j.1365-2184.2012.00846.x
- Chan KKW, Oza AM, Siu LL. The statins as anticancer agents. *Clin Cancer Res.* (2003) 9:10–19.
- Yu X, Pan Y, Ma H, Li W. Simvastatin Inhibits Proliferation and Induces Apoptosis in Human Lung Cancer Cells. *Oncol Res Featur Preclin Clin Cancer Ther.* (2013) 20:351–7. doi: 10.3727/096504013X13657689382897
- Larsen SB, Dehlendorff C, Skriver C, Dalton SO, Jespersen CG, Borre M. Postdiagnosis statin use and mortality in danish patients with prostate cancer. *J Clin Oncol.* (2017) 35:3290–7. doi: 10.1200/JCO.2016.71.8981
- Cardwell CR, Hicks BM, Hughes C, Murray LJ. Statin use after colorectal cancer diagnosis and survival: a population-based cohort study. *J Clin Oncol.* (2014) 32:3177–83. doi: 10.1200/JCO.2013.54.4569
- Murtola TJ, Visvanathan K, Artama M, Vainio H, Pukkala E. Statin use and breast cancer survival: a nationwide cohort study from Finland. *PLoS ONE* (2014) 9:e110231. doi: 10.1371/journal.pone.0110231
- Iarrobino NA, Gill B, Bernard ME, Mishra M V, Champ CE. Targeting tumor metabolism with statins during treatment for advanced-stage pancreatic cancer. *Am J Clin Oncol.* (2018). doi: 10.1097/COC.0000000000000433. [Epub ahead of print].
- Chubak J, Boudreau DM, Wirtz HS, McKnight B, Weiss NS. Threats to validity of nonrandomized studies of postdiagnosis exposures on cancer recurrence and survival. *J Natl Cancer Inst.* (2013) 105:1456–62. doi: 10.1093/jnci/djt211
- Nielsen SF, Nordestgaard BG, Bojesen SE. Statin use and reduced cancer-related mortality. *N Engl J Med.* (2012) 367:1792–802. doi: 10.1056/NEJMoa1201735
- Marcella SW, David A, Ohman-Strickland PA, Carson J, Rhoads GG. Statin use and fatal prostate cancer. *Cancer* (2012) 118:4046–52. doi: 10.1002/cncr.26720
- Pitter KL, Tamagno I, Alikhanyan K, Hosni-Ahmed A, Pattwell SS, Donnola S. Corticosteroids compromise survival in glioblastoma. *Brain* (2016) 139:1458–71. doi: 10.1093/brain/aww046
- Klement RJ, Champ CE. Corticosteroids compromise survival in glioblastoma in part through their elevation of blood glucose levels. *Brain* (2016) 9:aww324. doi: 10.1093/brain/aww324
- Crawford AG, Cote C, Couto J, Daskiran M, Gunnarsson C, Haas K. Prevalence of obesity, type II diabetes mellitus, hyperlipidemia, and hypertension in the United States: findings from the GE centrality electronic medical record database. *Popul Health Manag.* (2010) 13:151–61. doi: 10.1089/pop.2009.0039
- Machtay M, Hsu C, Komaki R, Sause WT, Swann RS, Langer CJ. Effect of overall treatment time on outcomes after concurrent chemoradiation for locally advanced non-small-cell lung carcinoma: analysis of the Radiation Therapy Oncology Group (RTOG) experience. *Int J Radiat Oncol.* (2005) 63:667–71. doi: 10.1016/j.ijrobp.2005.03.037
- Zhang J, Gold KA, Lin HY, Swisher SG, Xing Y, Lee JJ. Relationship between tumor size and survival in non-small-cell lung cancer (NSCLC): an analysis of the surveillance, epidemiology, and end results (SEER) registry. *J Thorac Oncol.* (2015) 10:682–90. doi: 10.1097/JTO.0000000000000456
- Dahlberg SE, Schiller JH, Bonomi PB, Sandler AB, Brahmer JR, Ramalingam SS. Body mass index and its association with clinical outcomes for advanced non-small-cell lung cancer patients enrolled on Eastern Cooperative Oncology Group clinical trials. *J Thorac Oncol.* (2013) 8:1121–7. doi: 10.1097/JTO.0b013e31829cf942
- Tieu MT, Lovblom LE, McNamara MG, Mason W, Laperriere N, Millar BA. Impact of glycemia on survival of glioblastoma patients treated with radiation and temozolomide. *J Neurooncol.* (2015) 124:119–26. doi: 10.1007/s11060-015-1815-0
- Derr RL, Ye X, Islas MU, Desideri S, Saudek CD, Grossman SA. Association between hyperglycemia and survival in patients with newly diagnosed glioblastoma. *J Clin Oncol.* (2009) 27:1082–6. doi: 10.1200/JCO.2008.19.1098
- Adeberg S, Bernhardt D, Foerster R, Bostel T, Koerber SA, Mohr A. The influence of hyperglycemia during radiotherapy on survival in patients with primary glioblastoma. *Acta Oncol.* (2016) 55:201–7. doi: 10.3109/0284186x.2015.1043397
- Lamkin DM, Spitz DR, Shahzad MM, Zimmerman B, Lenihan DJ, Degeest K. Glucose as a prognostic factor in ovarian carcinoma. *Cancer* (2009) 115:1021–7. doi: 10.1002/cncr.24126
- De Giorgio R, Barbara G, Cecconi A, Corinaldesi R, Mancini AM. Diabetes is associated with longer survival rates in patients with malignant tumors. *Arch Intern Med.* (2000) 160:2217. doi: 10.1001/archinte.160.14.2217
- Hatlen P, Grønberg BH, Langhammer A, Carlsen SM, Amundsen T. Prolonged survival in patients with lung cancer with diabetes mellitus. *J Thorac Oncol.* (2011) 6:1810–7. doi: 10.1097/JTO.0b013e31822a75be
- Park SM, Lim MK, Shin SA, Yun YH. Impact of prediagnosis smoking, alcohol, obesity, and insulin resistance on survival in male cancer patients: national health insurance corporation study. *J Clin Oncol.* (2006) 24:5017–24. doi: 10.1200/JCO.2006.07.0243
- Barone BB, Yeh HC, Snyder CF, Peairs KS, Stein KB, Derr RL. Long-term all-cause mortality in cancer patients with preexisting diabetes

- mellitus: a systematic review and meta-analysis. *JAMA* (2008) 300:2754–64. doi: 10.1001/jama.2008.824
41. Gallagher EJ, Fierz Y, Vijayakumar A, Haddad N, Yakar S, LeRoith D. Inhibiting PI3K reduces mammary tumor growth and induces hyperglycemia in a mouse model of insulin resistance and hyperinsulinemia. *Oncogene* (2012) 31:3213–22. doi: 10.1038/onc.2011.495
 42. Cherrin C, Haskell K, Howell B, Jones R, Leander K, Robinson R. An allosteric Akt inhibitor effectively blocks Akt signaling and tumor growth with only transient effects on glucose and insulin levels *in vivo*. *Cancer Biol Ther.* (2010) 9:493–503.
 43. Mazzeletti M, Bortolin F, Brunelli L, Pastorelli R, Di Giandomenico S, Erba E. Combination of PI3K/mTOR inhibitors: antitumor activity and molecular correlates. *Cancer Res.* (2011) 71:4573–84. doi: 10.1158/0008-5472.CAN-10-4322
 44. García-Jiménez C, García-Martínez JM, Chocarro-Calvo A, De la Vieja A. A new link between diabetes and cancer: enhanced WNT/ β -catenin signaling by high glucose. *J Mol Endocrinol.* (2014) 52:R51–66. doi: 10.1530/JME-13-0152
 45. Tang Q, Zhao H, Yang B, Li L, Shi Q, Jiang C. WIF-1 gene inhibition and Wnt signal transduction pathway activation in NSCLC tumorigenesis. *Oncol Lett.* (2017) 13:1183–8. doi: 10.3892/ol.2017.5566
 46. Champ CE, Palmer JD, Volek JS, Werner-Wasik M, Andrews DW, Evans JJ. Targeting metabolism with a ketogenic diet during the treatment of glioblastoma multiforme. *J Neurooncol.* (2014) 117:125–31. doi: 10.1007/s11060-014-1362-0
 47. Klement RJ, Fink MK. Dietary and pharmacological modification of the insulin/IGF-1 system: exploiting the full repertoire against cancer. *Oncogenesis* (2016) 5:e193. doi: 10.1038/oncsis.2016.2
 48. Klement RJ, Champ CE, Otto C, Kämmerer U. Anti-tumor effects of ketogenic diets in mice: a meta-analysis. *PLoS ONE* (2016) 11:e0155050. doi: 10.1371/journal.pone.0155050
 49. Champ CE, Klement RJ. Commentary on “Strong adverse prognostic impact of hyperglycemic episodes during adjuvant chemoradiotherapy of glioblastoma multiforme.” *Strahlenther Onkol.* (2014) 190:933–8. doi: 10.1007/s00066-014-0788-9
 50. Kalaany NY, Sabatini DM. Tumours with PI3K activation are resistant to dietary restriction. *Nature* (2009) 458:725–31. doi: 10.1038/nature07782
 51. Arrieta O, Varela-Santoyo E, Soto-Perez-de-Celis E, Sánchez-Reyes R, De la Torre-Vallejo M, Muñoz-Hernández S. Metformin use and its effect on survival in diabetic patients with advanced non-small cell lung cancer. *BMC Cancer* (2016) 16:633. doi: 10.1186/s12885-016-2658-6
 52. Porporato PE. Understanding cachexia as a cancer metabolism syndrome. *Oncogenesis* (2016) 5:e200. doi: 10.1038/oncsis.2016.3
 53. Han JY, Lee SH, Yoo NJ, Hyung LS, Moon YJ, Yun T. A randomized phase II study of gefitinib plus simvastatin versus gefitinib alone in previously treated patients with advanced non-small cell lung cancer. *Clin Cancer Res.* (2011) 17:1553–60. doi: 10.1158/1078-0432.CCR-10-2525
 54. Hung MS, Chen IC, Lee CP, Huang RJ, Chen PC, Tsai YH. Statin improves survival in patients with EGFR-TKI lung cancer: a nationwide population-based study. *PLoS ONE* (2017) 12:e0171137. doi: 10.1371/journal.pone.0171137
 55. Cardwell CR, Mc Menamin Ú, Hughes CM, Murray LJ. Statin use and survival from lung cancer: a population-based cohort study. *Cancer Epidemiol Biomarkers Prev.* (2015) 24:833–41. doi: 10.1158/1055-9965.EPI-15-0052
 56. Okuno SH, Jett JR. Small cell lung cancer: current therapy and promising new regimens. *Oncologist* (2002) 7:234–8. doi: 10.1634/THEONCOLOGIST.7-3-234
 57. Lacerda L, Reddy JP, Liu D, Larson R, Li L, Masuda H. Simvastatin radiosensitizes differentiated and stem-like breast cancer cell lines and is associated with improved local control in inflammatory breast cancer patients treated with postmastectomy radiation. *Stem Cells Transl Med.* (2014) 3:849–56. doi: 10.5966/sctm.2013-0204
 58. He Z, Mangala LS, Theriot CA, Rohde LH, Wu H, Zhang Y. Cell killing and radiosensitizing effects of atorvastatin in PC3 prostate cancer cells. *J Radiat Res.* (2012) 53:225–233. doi: 10.1269/jrr.11114
 59. Rao S, Lowe M, Herliczek TW, Keyomarsi K. Lovastatin mediated G1 arrest in normal and tumor breast cells is through inhibition of CDK2 activity and redistribution of p21 and p27, independent of p53. *Oncogene* (1998) 17:2393–402. doi: 10.1038/sj.onc.1202322
 60. Urbach P. The value of randomization and control in clinical trials. *Stat Med.* (1993) 12:1421–31. doi: 10.1002/sim.4780121508
 61. van de Poll-Franse L V., Houterman S, Janssen-Heijnen MLG, Dercksen MW, Coebergh JWW, Haak HR. Less aggressive treatment and worse overall survival in cancer patients with diabetes: a large population based analysis. *Int J Cancer* (2007) 120:1986–92. doi: 10.1002/ijc.22532

Conflict of Interest Statement: The authors declare that the research was conducted in the absence of any commercial or financial relationships that could be construed as a potential conflict of interest.

Copyright © 2018 Iarrobino, Gill, Bernard, Klement, Werner-Wasik and Champ. This is an open-access article distributed under the terms of the Creative Commons Attribution License (CC BY). The use, distribution or reproduction in other forums is permitted, provided the original author(s) and the copyright owner(s) are credited and that the original publication in this journal is cited, in accordance with accepted academic practice. No use, distribution or reproduction is permitted which does not comply with these terms.