



4-15-2007

Mister Blue and Madame Orange

Tristan Scremin
People's College of Law

DOI: <https://doi.org/10.13023/disclosure.16.06>

Follow this and additional works at: <https://uknowledge.uky.edu/disclosure>



Part of the [Art and Design Commons](#)

This work is licensed under a [Creative Commons Attribution-Noncommercial 4.0 License](#).



Recommended Citation

Scremin, Tristan (2007) "Mister Blue and Madame Orange," *disClosure: A Journal of Social Theory*: Vol. 16 , Article 6.

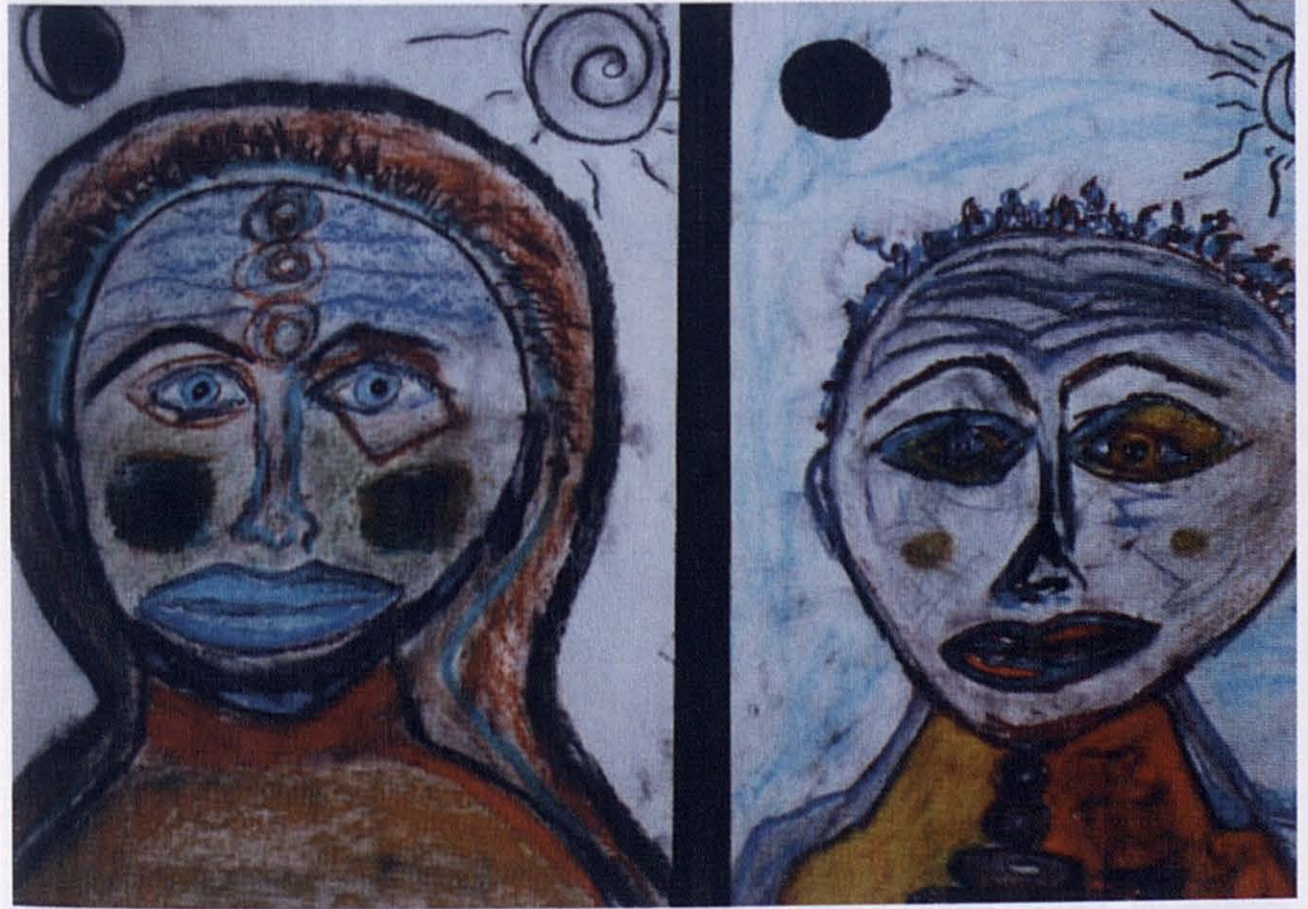
DOI: <https://doi.org/10.13023/disclosure.16.06>

Available at: <https://uknowledge.uky.edu/disclosure/vol16/iss1/6>

This Article is brought to you for free and open access by *disClosure: A Journal of Social Theory*. Questions about the journal can be sent to disclosurejournal@gmail.com

Artist Gallery:
Tristan Scremin

Rochelle Rives
"Things that Lie on the Surface:"
Modernism, Impersonality, and Emotional
Inexpressibility



© 2007 Tristan Scremin
"Mister Blue and Madame Orange"

© 2007 *deClosure*, a
Journal of *social theory*
(18). Committee on Social
Theory, University of
Kentucky, Lexington, KY

Lewis bluntly dismisses the social ideal of the "personality" as a figment of the democratic imaginary. In addition to his feverish political distrust of democratic ideals, Lewis's rhetoric also casts doubt on the act of "expression" in general. While Lewis's disdain for the expression of personality and its popular pretense of individuality does not directly refer to emotional expression, his feelings about the subject are tied up within a larger modernist discourse of emotion that prescriptively decried it. In its most ideal and