



2-27-2007

# Loline Alkaloid Gene Clusters of the Fungal Endophyte *Neotyphodium Uncinatum*

Christopher L. Schardl  
*University of Kentucky*, [schardl@uky.edu](mailto:schardl@uky.edu)

Heather H. Wilkinson  
*University of Kentucky*

Martin J. Spiering  
*University of Kentucky*

**Right click to open a feedback form in a new tab to let us know how this document benefits you.**

Follow this and additional works at: [https://uknowledge.uky.edu/plantpath\\_patents](https://uknowledge.uky.edu/plantpath_patents)

 Part of the [Plant Pathology Commons](#)

## Recommended Citation

Schardl, Christopher L.; Wilkinson, Heather H.; and Spiering, Martin J., "Loline Alkaloid Gene Clusters of the Fungal Endophyte *Neotyphodium Uncinatum*" (2007). *Plant Pathology Faculty Patents*. 5.  
[https://uknowledge.uky.edu/plantpath\\_patents/5](https://uknowledge.uky.edu/plantpath_patents/5)

This Patent is brought to you for free and open access by the Plant Pathology at UKnowledge. It has been accepted for inclusion in Plant Pathology Faculty Patents by an authorized administrator of UKnowledge. For more information, please contact [UKnowledge@sv.uky.edu](mailto:UKnowledge@sv.uky.edu).



US007183098B2

(12) **United States Patent**  
**Schardl et al.**

(10) **Patent No.:** **US 7,183,098 B2**  
(45) **Date of Patent:** **Feb. 27, 2007**

(54) **LOLINE ALKALOID GENE CLUSTERS OF THE FUNGAL ENDOPHYTE NEOTYPHODIUM UNCINATUM**

(75) Inventors: **Christopher L. Schardl**, Lexington, KY (US); **Heather H. Wilkinson**, College Station, TX (US); **Martin J. Spiering**, Lexington, KY (US)

(73) Assignee: **University of Kentucky Research Foundation**, Lexington, KY (US)

(\* ) Notice: Subject to any disclaimer, the term of this patent is extended or adjusted under 35 U.S.C. 154(b) by 475 days.

(21) Appl. No.: **10/601,700**

(22) Filed: **Jun. 24, 2003**

(65) **Prior Publication Data**

US 2004/0139496 A1 Jul. 15, 2004

**Related U.S. Application Data**

(60) Provisional application No. 60/390,446, filed on Jun. 24, 2002.

(51) **Int. Cl.**  
**C12P 17/14** (2006.01)  
**C07H 21/04** (2006.01)  
**A63B 69/36** (2006.01)

(52) **U.S. Cl.** ..... **435/252.3**; 435/120; 435/320.1; 435/252.33; 435/252.8; 435/254.11; 536/23.2

(58) **Field of Classification Search** ..... 435/252.2, 435/252.3, 252.8, 254.11, 252.33, 320.1; 536/23.2

See application file for complete search history.

(56) **References Cited**

OTHER PUBLICATIONS

M. Arévalo-Rodríguez et al., "Mutations that Cause Threonine Sensitivity Identify Catalytic and Regulatory Regions of the Aspartate Kinase of *Saccharomyces cerevisiae*", *Yeast* 15, (1999), pp. 1331-1345.

L.P. Bush et al., "Chemistry, occurrence and biological effects of saturated pyrrolizidine alkaloids associated with endophyte-grass interactions", *Agriculture, Ecosystems and Environment*, 44, (1993), pp. 81-102.

N.P. Keller, "Review: Metabolic Pathway Gene Clusters in Filamentous Fungi", *Fungal Genetics and Biology*, 21, (1997), pp. 17-29.

J.A. Seo, et al., Characterization of Four Clustered and Coregulated Genes Associated with Fumonisin Biosynthesis in *Fusarium verticillioides*, *Fungal Genetics and Biology*, 34, (2001) pp. 155-165.

P. Tudzynski et al., "Evidence for an ergot alkaloid gene cluster in *Claviceps purpurea*", *Mol. Gen. Genet.*, (1999), 261, pp. 133-141.

A. Leuchtmann et al., "Different Levels of Protective Alkaloids in Grasses with Stroma-Forming and Seed-Transmitted *Epichloë/Neotyphodium* Endophytes", *Journal of Chemical Ecology*, vol. 26, No. 4, 2000, pp. 1025-1036.

H.H. Wilkinson et al., "Contribution of Fungal Loline Alkaloids to Protection from Aphids in a Grass-Endophyte Mutualism", *MPMI*, vol. 13, No. 10, 2000, pp. 1027-1033.

M.R. Siegel et al., "Fungal Endophyte-Infected Grasses: Alkaloid Accumulation and Aphid Response", *Journal of Chemical Ecology*, vol. 16, No. 12, 1990, pp. 3301-3315.

C.O. Miles et al., "High Levels of Ergonovine and Lysergic Acid Amide in Toxic *Achnatherum inebrians* infection by an Acremonium-like Endophytic Fungus", *J. Agric Food Chem.*, 1996, 44, pp. 1285-1290.

M.R. Tepaske et al., "Analyses of Selected Endophyte-Infected Grasses for the Presence of Loline-Type and Ergot-Type Alkaloids", *J. Agric. Food Chem.*, 1993, 41, pp. 2299-2303.

K.D. Craven et al., "Hybrid fungal endophytes symbiotic with the grass *Lolium pratense*", *Sydowia*, 53(1), pp. 44-73.

M.J. Christensen et al., Taxonomy of *Acremonium* endophytes of tall fescue (*Festuca arundinacea*), meadow fescue (*F. pratensis*) and perennial rye-grass (*Lolium perenne*), *Mycol. Res.*, 97, (9), (1993), pp. 1053-1092.

A. Leuchtmann et al., "Mating compatibility and phylogenetic relationships among two new species of *Epichloë* and other congeneric European species", *Mycol. Res.* 12, (10), (1998), pp. 1169-1182.

M.J. Spiering et al., "Expressed sequence tags and genes associated with loline alkaloid expression by the fungal endophyte *Neotyphodium uncinatum*", *Fungal Genetics and Biology*, (2000), pp. 1-13.

Z Lin et al., "Rapid Mini-Scale Plasmid Isolation for DNA Sequencing and Restriction Mapping", *BioTechniques*, vol. 29, Sep. 2000, pp. 466-468.

T.H. Al-Samarrai et al., "A simple method for extraction of fungal genomic DNA", *Letters in Applied Microbiology*, 2000, vol. 30, pp. 53-56.

S.F. Altschul et al., "Gapped BLAST and PSI-BLAST: a new generation of protein database search programs", *Nucleic Acids Research*, 1997, vol. 25, No. 17, pp. 3389-3402.

J.D. Blankenship et al., "Production of loline alkaloids by the grass endophyte, *Neotyphodium uncinatum*, in defined media", *Photochemistry, Vvol.* 58, (2001), pp. 395-401.

(Continued)

*Primary Examiner*—Rebecca E. Prouty

*Assistant Examiner*—Kagnew Gebreyesus

(74) *Attorney, Agent, or Firm*—McDermott Will & Emery LLP

(57)

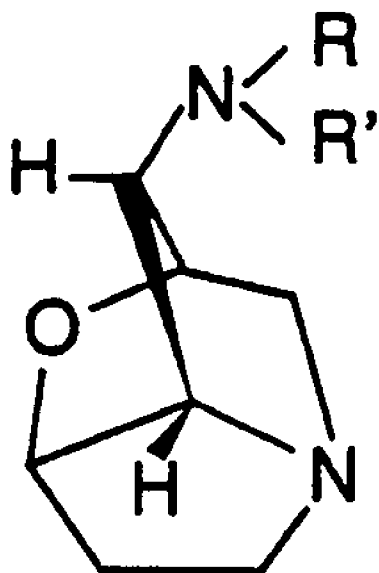
**ABSTRACT**

Loline alkaloids (LA), which are 1-aminopyrrolizidines with an oxygen bridge, are produced by *Epichloë* (anamorph=*Neotyphodium*) species, endophytes of grasses. LA are insecticidal, thus helping protect host plants from insect herbivory. Suppression subtractive hybridization PCR was used to isolate transcripts up-regulated during loline alkaloid production in cultures of *Neotyphodium uncinatum*. Subtracted cDNAs were cloned, and a  $\lambda$ -phage cDNA library from an LA-expressing *N. uncinatum* culture was screened with subtracted cDNA. In BLAST searches, several cDNAs identified had sequence similarities to aspartate kinases, and another with O-acetylhomoserine-(thiol)lyase. Differential expression of these two genes in LA-producing cultures of *N. uncinatum* was confirmed, and in a survey of 23 isolates from 21 *Neotyphodium* and *Epichloë* species these two genes strictly correlated with LA production. Two nucleic acid molecules encoding two loline alkaloid gene clusters have been identified.

**7 Claims, 6 Drawing Sheets**

## OTHER PUBLICATIONS

- M.L. Bogush et al., "Identification and localization of difference between *Escherichia coli* and *Salmonella typhimurium* genomes by suppressive subtractive hybridization", *Molecular and General Genetics*, (1999), vol. 262, pp. 721-729.
- L.P. Bush et al., "Bioprotective Alkaloids of Grass-Fungal Endophyte Symbioses<sup>1</sup>", *Plant Physiol.*, (1997), vol. 114, pp. 1-7.
- A.D. Byrd et al., "The  $\beta$ -tubulin gene of *Epichloë typhina* from perennial ryegrass (*Lolium perenne*)", *Current Genetics*, (1990), vol. 18, pp. 347-354.
- L. Diatchenko et al., "Suppression subtractive hybridization: A method for generating differentially regulated or tissue-specific cDNA probes and libraries", *Proceedings of the National Academy of Sciences of the United States of America*, Jun. 11, 1996, vol. 93, No. 12, pp. 6025-6030.
- L. Diatchenko et al., "Suppression Subtractive Hybridization: A Versatile Method for Identifying Differentially Expressed Genes", cDNA Preparation and Characterization, *Methods in Enzymology*, vol. 303, pp. 349-380.
- Y. Wang et al., "A Rapid CTAB DNA Isolation Technique for RAPD Fingerprinting and Other PCR Applications", *BioFeedback*, vol. 14, No. 5, (1993).
- W.O. Endege et al., "Representative cDNA Libraries and Their Utility in Gene Expression Profiling", *BioTechniques*, vol. 26, No. 2, (Mar. 1999), pp. 542-550.
- F.S. Gimble et al., MiniReview, "Invasion of a multitude of genetic niches by mobile endonuclease genes", *FEMS Microbiology Letters*, vol. 185, (2000), pp. 99-107.
- P. Liang et al., "Differential Display of Eukaryotic Messenger RNA by Means of the Polymerase Chain Reaction", *Science*, vol. 257, Aug. 14, 1992, pp. 987-971.
- G. Nicolas et al., "Lack of hepcidin gene expression and severe tissue iron overload in upstream stimulatory factor 2 (*USF2*) knockout mice", *PNAS*, vol. 98, No. 15, Jul. 17, 2001, pp. 8780-8785.
- J. Oscarrsson et al., "Pulsatile growth hormone secretion decreases S-adenosylmethionine synthetase in rat liver" *Am. J. Physiol. Endocrinol Metab.*, vol. 280, pp. E280-E286, 2001.
- A. Paszewski et al., "Sulphur Metabolism", *Aspergillus: 50 years on*, vol. 29, pp. 299-319.
- R.H. Proctor et al., "*Tri6* Encodes an Unusual Zinc Finger Protein Involved in Regulation of Trichothecene Biosyntheses in *Fusarium sporotrichioides*", *Applied and Environmental Microbiology*, vol. 61, No. 5, May 1995, pp. 1923-1930.
- D.V. Rebrikov et al., "Mirror orientation selection (MOS): a method for eliminating false positive clones from libraries generated by suppression subtractive hybridization", *Nucleic Acids Research*, 2000, vol. 28, No. 20, e90, pp. 1-4.
- C.L. Schardl et al., "Review: *Epichloë festucae* and Related Mutualistic Symbionts of Grasses", *Fungal Genetics and Biology*, vol. 33, pp. 69-82, (2001).
- M. Sienko et al., "Structure and regulation of *cysD*, the homocysteine synthase gene of *Aspergillus nidulans*", *Current Genetics*, (1998), vol. 33, pp. 136-144.
- B. Tofern et al., Occurrence of loline alkaloids in *Argyria mollis* (Convolvulaceae), *Phytochemistry*, vol. 51, (1999), pp. 1177-1180.
- T. Yasuta et al., "DNA Sequence and Mutational Analysis of Rhizobitoxine Biosynthesis Genes in *Bradyrhizobium elkanii*" *Applied and Environmental Microbiology*, vol. 67, No. 11, Nov. 2001, pp. 4999-5009.
- B. Zhumabayeva et al., "Use of SMART<sup>TM</sup>- Generated cDNA for Gene Expression Studies in Multiple Human Tumors", *BioTechniques*, vol. 30, No. 1, Jan. 2001, pp. 158-163.



	<u>R</u>	<u>R'</u>
Loline	CH <sub>3</sub>	H
Norloline	H	H
<i>N</i> -Methyllooline	CH <sub>3</sub>	CH <sub>3</sub>
<i>N</i> -Formyllooline	CH <sub>3</sub>	CHO
<i>N</i> -Formylnorloline	H	CHO
<i>N</i> -Acetyllooline	CH <sub>3</sub>	COCH <sub>3</sub>
<i>N</i> -Acetylnorloline	H	COCH <sub>3</sub>

Figure 1

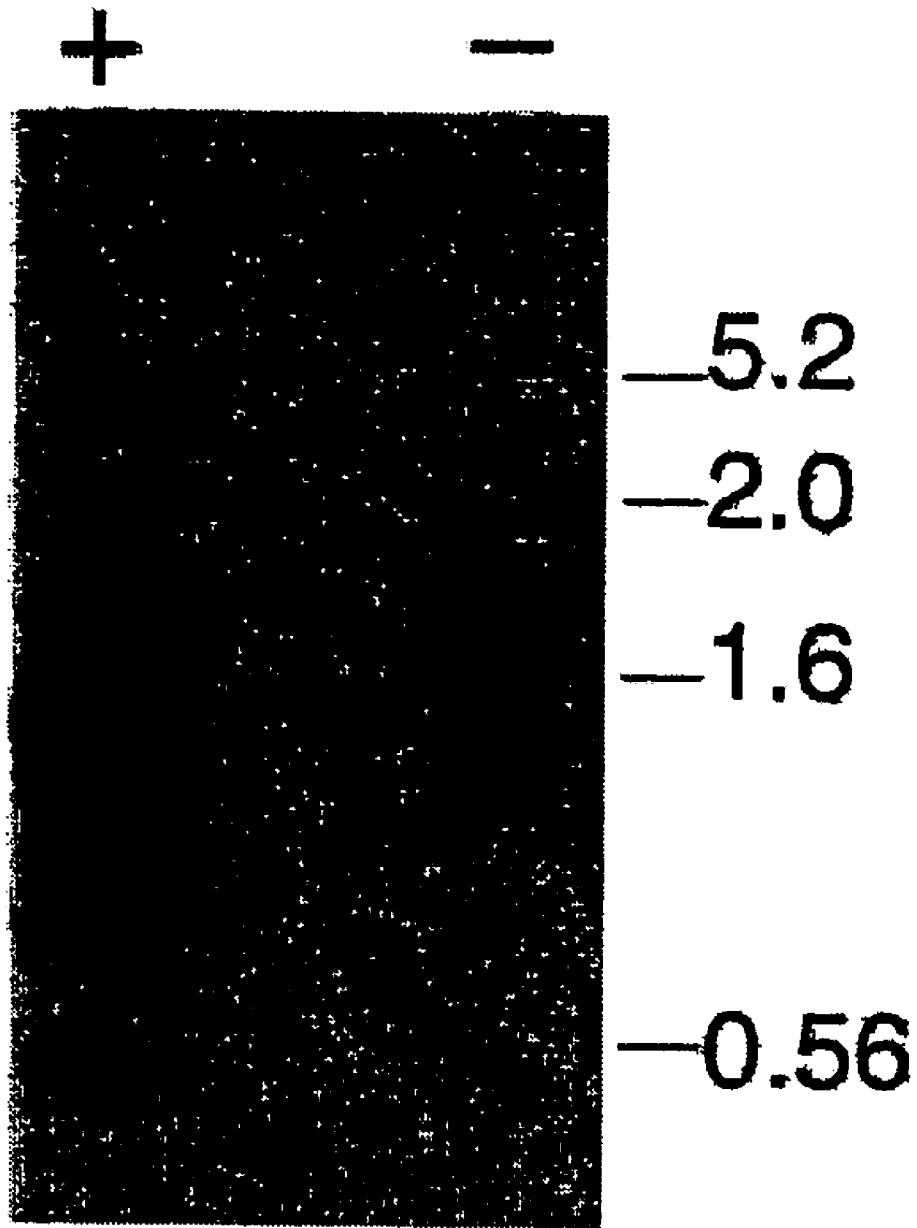


Figure 2

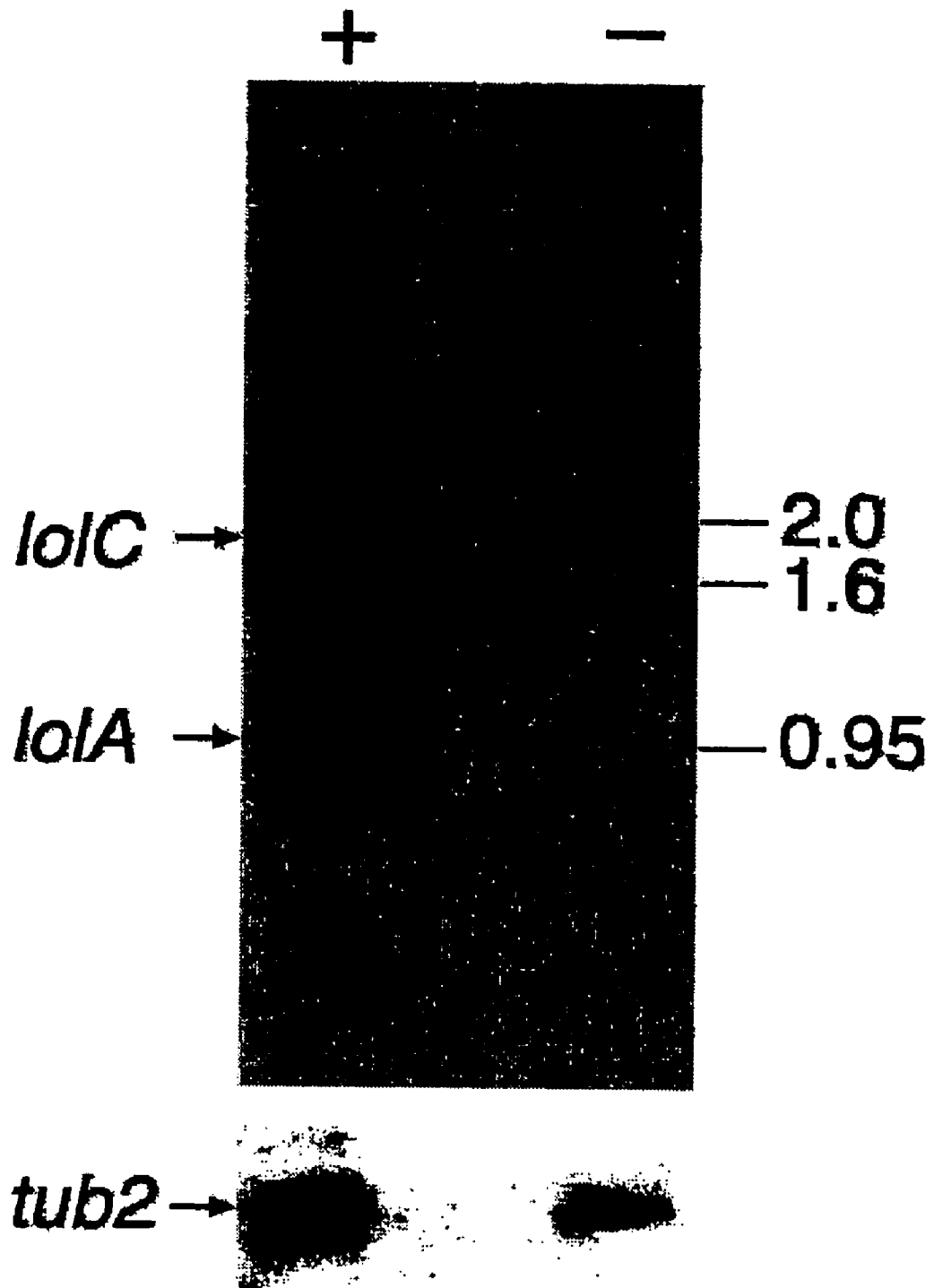


Figure 3

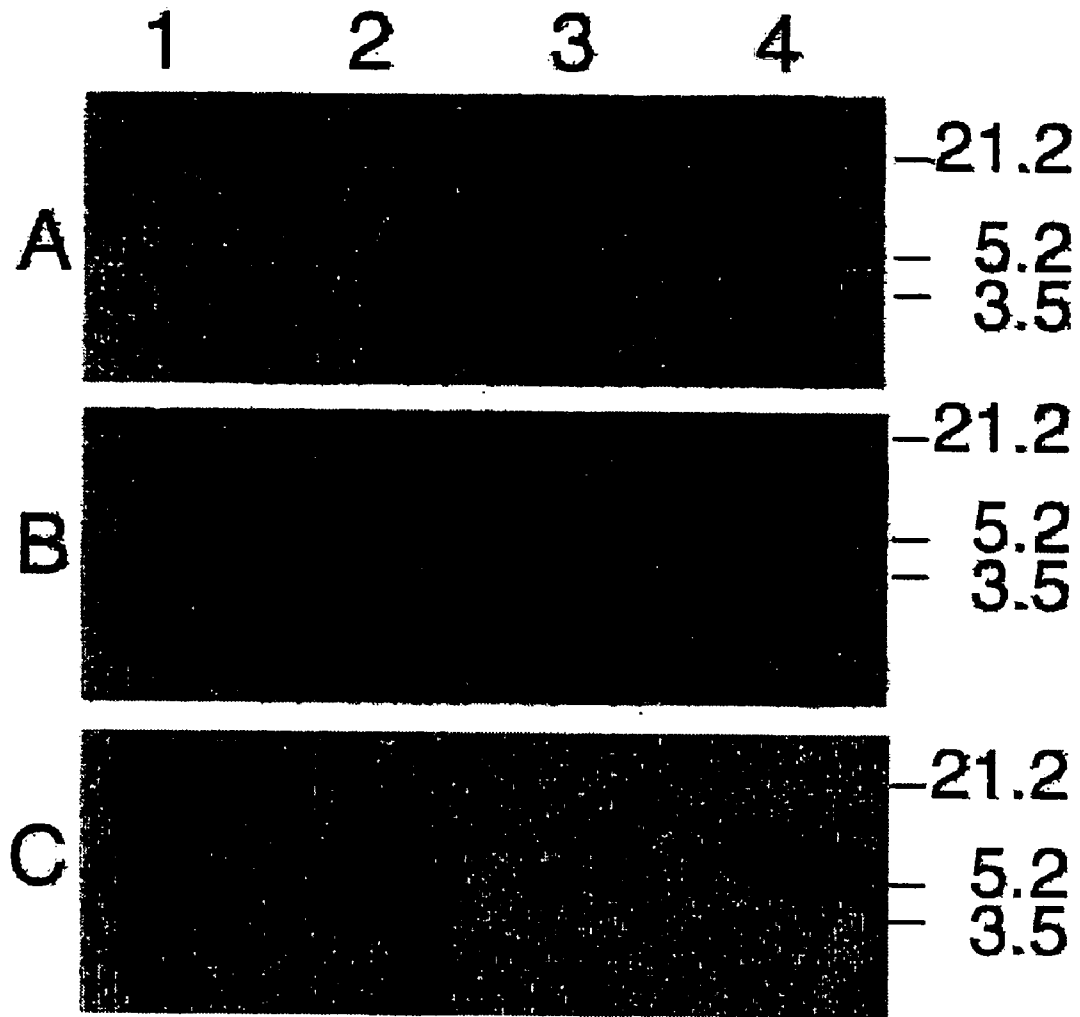


Figure 4

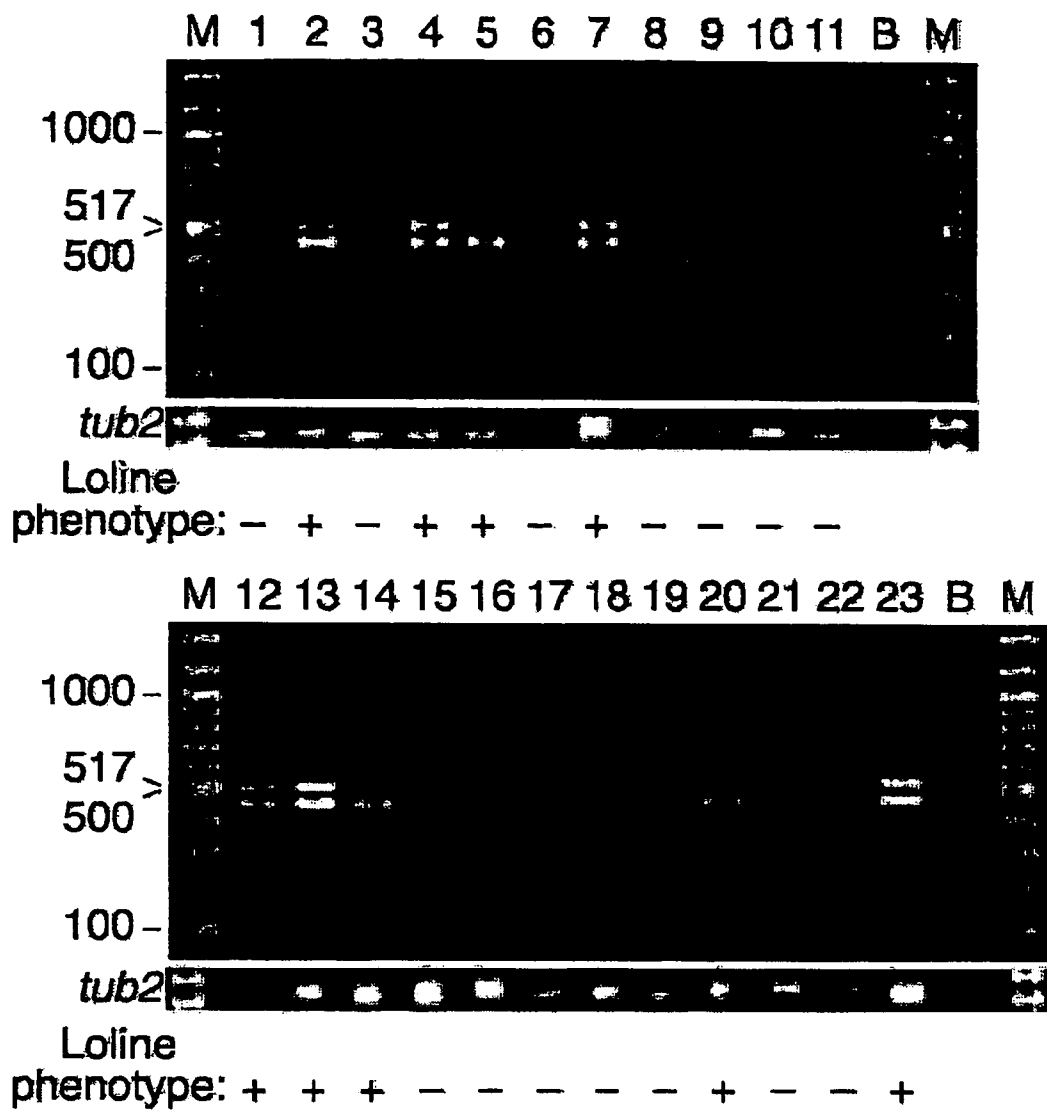


Figure 5



*Fig. XX. Loline alkaloid biosynthesis genes*

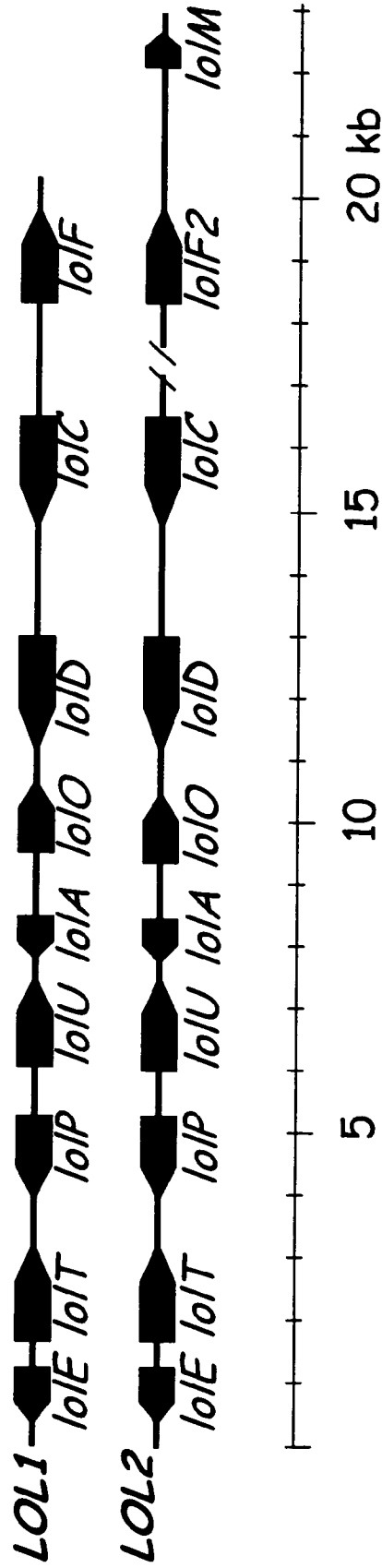


Figure 6

## LOLINE ALKALOID GENE CLUSTERS OF THE FUNGAL ENDOPHYTE NEOTYPHODIUM UNCINATUM

### RELATED APPLICATIONS

The present application claims the benefit of the priority date of provisional patent application No. 60/390,446, filed Jun. 24, 2002. The complete disclosure of the earlier filed application is incorporated by reference herein.

### GOVERNMENT SUPPORT

The present invention was supported by the United States National Science Foundation Integrative Plant Biology Program 9808554 to C.L.S. and the United States Department of Agriculture NRICGP grant 9901343.

### FIELD OF THE INVENTION

The present invention relates generally to alkaloids and alkaloid biosynthesis. In particular, the invention pertains to the nucleic acids encoding loline alkaloid synthesis genes and the tailoring enzymes of loline alkaloid biosynthesis, and to recombinant vectors and host cells containing such genes, and to the recombinant production of alkaloids and uses thereof.

### BACKGROUND OF THE INVENTION

Loline alkaloids (LA; saturated 1-aminopyrrolizidine alkaloids with an ether bridge, FIG. 1), are produced in a number of associations of grasses with endophytes of the genus *Epichloë* and their asexual descendants, *Neotyphodium* spp. In addition, LA are reported from the plants *Adenocarpus* spp. and *Argyrea mollis* of the families Fabaceae and Convolvulaceae, respectively. LA produced in grass-endophyte symbioses have strong insecticidal and feeding-deterrent properties (Riedell, et al., 1999, *J Entomol. Sci.* 26: 122–129; Wilkinson et al., 2000, *Mol. Plant-Microbe Interact.* 13: 1027–1033). Moreover, grasses infected by LA-producing endophytes, such as *Neotyphodium coenophialum* and *N. uncinatum*, have greater tolerance to drought conditions (Arechavaleta et al., 1989, *Agron. J* 81: 83–90; Bacon, 1993, *Agric. Ecos. Environ.* 44: 123–141) than grasses infected by closely related endophytes, such as *N. lolii*, that do not produce LA (Barker et al., 1997, *Agric. Ecos. Environ.* 44: 123–141; Cheplick et al., 2000, *Mycol. Res.* 97: 1083–1092.). Growth suppression (allelopathy) of neighboring plants by meadow fescue (*Lolium pratense*) infected with *N. uncinatum* may indicate a potential for additional beneficial roles of these alkaloids in grass plant competitiveness and persistence.

LA can accumulate to extremely high levels in grass tissues, occasionally reaching more than 2% of the plant's dry mass (Craven et al., 2001, *Sydowia* 53: 44–73). These quantities far exceed the biomass of the fungus and the amounts of other alkaloids, such as ergot alkaloids, indole-diterpenoids, and peramine, also produced in some of the endophyte-grass symbiota. However, despite their exceptional levels in the grass and importance of LA in grass survival, little is known about LA biosynthesis. This is in contrast to some of the other endophyte-associated alkaloids, such as ergopeptines and indole-diterpenoids, for which much of the biosynthetic pathways have been elucidated and key enzymes identified.

It was previously unknown whether LA are of fungal or plant origin, or produced by both symbiotic partners together, but a recent study has established that *N. uncinatum* can produce LA in axenic culture (Blankenship et al., 2001, *Phytochemistry* 58: 395–401). This finding presents opportunities to identify genes involved in LA biosynthesis. Knowledge of the LA biosynthesis genes would allow more detailed studies on the roles of LA in plant persistence, in particular on possible contributions to abiotic stress tolerance, as well as the cloning and use of these genes to generate genetically engineered plants.

### SUMMARY OF THE INVENTION

In one aspect, the present invention provides isolated nucleic acid compounds comprising at least a sequence identical or complementary to all or part of a coding sequence for the loline alkaloid biosynthetic gene cluster from *Neotyphodium uncinatum* (SEQ ID NO. 15, and SEQ ID NO. 16). It appears that SEQ ID NO: 17 may be linked to the 5' end of SEQ ID NO: 16. Preferably, a part of said coding sequence is an open reading frame (ORF) selected from the group consisting of ORF1, ORF2, ORF3, ORF4, ORF5, ORF6, ORF7, ORF8, ORF9, ORF1', ORF2', ORF3', ORF4', ORF5', ORF6', ORF7', ORF8', ORF9' or ORF10'. More preferably, a part of said coding sequence is an ORF selected from the group consisting of ORF1, ORF2, ORF3, ORF4, ORF5, ORF6, ORF7, ORF8, ORF9, ORF1', ORF2', ORF3', ORF4', ORF5', ORF6', ORF7', and ORF8'.

In one embodiment, the present invention provides an isolated nucleic acid strand that encodes a loline alkaloid gene cluster or subunit thereof comprising a nucleotide sequence identical or complementary to, or an amino acid sequence encoded by a nucleotide sequence identical or complementary to, all or part of a coding sequence for loline alkaloid biosynthetic gene cluster of SEQ ID NO. 15 or SEQ ID NO. 16. Preferably, the gene cluster encodes a functional gene cluster and optionally, selected tailoring enzymes. The gene cluster may be derived from a single species or may be hybrid in nature. In certain embodiments, the gene cluster is a replacement gene cluster. The replacement gene cluster may be a variant, hybrid, mutant, analog or derivative thereof.

In another embodiment, the invention provides an isolated nucleic acid that encodes three or more ORFs comprising a sequence identical or complementary to all or part of a coding sequence for enzymes performing the biosynthesis of loline alkaloids from *Neotyphodium uncinatum*. Preferably, the ORFs encode a functional gene cluster and optionally, selected tailoring enzymes. In certain embodiments, an ORF may be derived from a single species or may be hybrid in nature. In certain embodiments at least one of the ORFs is native to the loline alkaloid gene cluster of SEQ ID NO. 15 or SEQ ID NO. 16. In certain other embodiments, at least one of the ORFs is native to SEQ ID NO: 17. In still other embodiments, at least one ORF is derived from a non-loline alkaloid producing *Neotyphodium* strain, or is hybrid in nature. In yet other embodiments, at least one ORF is a variant, mutant, analog or derivative of the native coding sequence of SEQ ID NO: 15, SEQ ID NO: 16 or SEQ ID NO: 17.

In still another embodiment, the present invention provides isolated nucleic acid compounds comprising three or more genes of the coding sequence for the biosynthesis of loline alkaloids. Preferably, the mixture of genes encode a functional gene cluster and optionally, selected tailoring enzymes. In certain embodiments, a gene may be derived

3

from a single species or may be hybrid in nature. In certain embodiments at least one gene is derived from a loline alkaloid biosynthetic gene cluster. In other embodiments, at least one gene is derived from a non-loline alkaloid producing *Neotyphodium* strain, or is hybrid in nature. Non-limiting exemplary non-*Neotyphodium* biosynthetic genes are preferably subunits of the *Neotyphodium australiense*, *Neotyphodium huerfanum*, *Neotyphodium inebrians*, *Neotyphodium lolii*, and *Neotyphodium melicicola* gene clusters. In yet other embodiments, at least one gene may be a variant, mutant, analog or derivative of the native coding sequence of SEQ ID NO: 15, SEQ ID NO: 16 or SEQ ID NO: 17. It is also preferred that the encoded activity of the gene is that of, for example and without limitation, an epoxidase,  $\alpha$ -type pyridoxal phosphate (PLP) associated enzymes, including, by example, class-v aminotransferase, cytochromes P450, aspartate kinase allosteric amino acid binding domain, oxidoreductase, ornithine decarboxylase,  $\gamma$ -type PLP enzyme, FAD-containing monooxygenase, and cyclohexanone oxidase.

In another aspect, the present invention provides recombinant expression vectors encoding a loline alkaloid gene cluster, or variants, hybrids, mutants, analogs or derivatives thereof. In certain embodiments, vectors encode one or more subunit of a loline alkaloid gene cluster, or variants, hybrids, mutants, analogs or derivatives thereof.

In another aspect, the present invention provides a host cell transformed with a recombinant expression vector described herein.

In still another aspect, the invention provides a method of preparing loline alkaloid, said method comprising introducing a recombinant vector that encodes a loline alkaloid gene cluster or subunit thereof into a host cell, culturing said host cell under conditions such that loline alkaloid is produced or expressed, and isolating the loline alkaloid from the host cell. In one embodiment, the method is practiced with an *E. coli* host cell. The gene cluster may be a replacement gene cluster and preferably a functional gene cluster. In certain embodiments, the invention provides methods for preparing new alkaloid-type compounds, preferably, loline-type alkaloids. The loline-type alkaloid produced may be loline alkaloid or loline alkaloid variants, hybrids, mutants, analogs or derivatives thereof. Such alkaloids are useful as an insecticide.

These and other embodiments and aspects of the invention will be more fully understood after consideration of the attached Drawings and their brief description below, together with the detailed description, example, and claims that follow.

#### BRIEF DESCRIPTION OF THE DRAWINGS

FIG. 1 shows the structures of the loline alkaloids found in certain grass—*Epichloë/Neotyphodium* symbiota. N-Formylloline and N-acetylornloline were abundant in *N. uncinatum* grown in LA-inducing medium.

FIG. 2 is an autoradiograph showing expression of transcripts isolated in the suppression subtractive hybridization in loline-producing (+) and suppressed (–) cultures. In each lane was loaded 0.5  $\mu$ g of total cDNA synthesized from total RNA and probed with subtracted cDNA; molecular sizes indicated (in kilobases) correspond to molecular marker (HindIII/EcoRI-cut  $\lambda$ .DNA) run on the same gel.

FIG. 3 is an autoradiograph showing expression of lolA and lolC genes in LA-producing (+) and suppressed (–) cultures. In each lane was loaded 0.5  $\mu$ g of total cDNA synthesized from total RNA. cDNAs were probed with a

4

mixture of a labeled 523 bp fragment from lolA and a labeled 1427 bp fragment from lolC. Identities of the hybridizing bands were confirmed in separate experiments with the individual probes (data not shown). Bottom panel shows expression of the tub2 as a control. Molecular sizes (in kilobases) are indicated, and correspond to bands of a DNA-size marker (HindIII/EcoRI-cut  $\lambda$ DNA) run in the same gel.

FIG. 4 is a Southern blot of HindIII-digested genomic DNAs probed for lolA (panel A), lolC (panel B), and tub2 (panel C). Genomic DNAs were from *N. lolii* 138 (lane 1), *E. festucae* CBS 102477 (lane 2), *E. festucae* CBS 102475 (lane 3), and *N. uncinatum* CBS 102646 (lane 4). Numbers adjacent to each blot indicate band sizes (in kilobases) of the molecular marker run in the same gel. For LA phenotype of each species/isolate see Table 3.

FIG. 5 demonstrates the presence of the lolA and lolC genes in endophyte species and isolates differing in LA production. Shown are electropherograms with 2  $\mu$ l of PCR product loaded in each lane. The multiplex PCR generated a 523 bp product from lolA and a 461 bp product from lolC. The control PCR generated a 726 bp product from tub2. Numbers above each lane indicate species or isolate listed under the same number in Table 3; lanes B were PCR blanks run without added template DNA; lanes M are molecular size markers (sizes indicated in bp).

FIG. 6 illustrates the *N. uncinatum* lol clusters 1 (LOL1) (upper bar) and 2 (LOL2) (lower bar). It appears that the lolF2 allele and lolM are linked to LOL2.

#### DETAILED DESCRIPTION OF THE INVENTION

Given the valuable agricultural properties of loline alkaloids, there is a need for methods and reagents for producing large quantities of loline-type alkaloids, for producing loline-type alkaloids in host cells that do not produce loline alkaloids naturally, and for producing novel loline-type alkaloids not found in nature. The present invention provides the protein encoding nucleic acids and methods that produce loline-type alkaloids, with particular application to methods for producing the loline alkaloids and variants, hybrids, mutants, analogs, derivatives and novel compounds related through structure or genetics to loline alkaloid.

The practice of the present invention will employ, unless otherwise indicated, conventional methods of chemistry, microbiology, molecular biology and recombinant DNA techniques within the skill of the art. Such techniques are explained fully in the literature. See, e.g., Maniatis, et al. *Molecular Cloning: A Laboratory Manual* (Current Edition); *DNA Cloning: A Practical Approach*, vol. I & II (D. Glover, ed.); *Oligonucleotide Synthesis* (N. Gait, ed., Current Edition); *Nucleic Acid Hybridization* (B. Hames & S. Higgins, eds., Current Edition); *Transcription and Translation* (B. Hames & S. Higgins, eds., Current Edition).

All publications, patents and patent applications cited herein, whether supra or infra, are hereby incorporated by reference in their entirety.

#### Definitions

As used herein, the term “alkaloid-type compound” refers to a compound or molecule that is encoded by at least one native alkaloid subunit, or variant, hybrid, mutant, analog, or derivative thereof, including for example, without limitation, loline-type alkaloid.

As used herein, the term “allele” refers to one of two or more alternate forms of a gene occupying the same locus in

a particular chromosome or linkage structure and differing from other alleles of the locus at one or more mutational sites. Non-limiting types of alleles include, neutral, amorphs, hypomorphs, hypermorphs, antimorphs, neomorphs, isoalleles and unstable alleles.

As used herein the term “coding sequence” or a sequence which “encodes” a particular protein, is a nucleic acid sequence which is transcribed (in the case of DNA) and translated (in the case of mRNA) into a polypeptide *in vitro* or *in vivo* when placed under the control of appropriate regulatory sequences. The boundaries of the coding sequence are determined by a start codon at the 5' (amino) terminus and a translation stop codon at the 3' (carboxy) terminus. A coding sequence can include, but is not limited to, cDNA from procaryotic or eucaryotic mRNA, genomic DNA sequences from procaryotic or eucaryotic DNA, and even synthetic DNA sequences. A transcription termination sequence will usually be located 3' to the coding sequence.

As used herein the term DNA “control sequences” refers collectively to promoter sequences, ribosome binding sites, polyadenylation signals, transcription termination sequences, upstream regulatory domains, enhancers, and the like, which collectively provide for the transcription and translation of a coding sequence in a host cell. Not all of these control sequences need always be present in a recombinant vector so long as the desired gene is capable of being transcribed and translated.

As used herein the term “functional gene cluster” refers to a set of genes (e.g., three or more) or subunits of a biosynthesis gene cluster, which catalyzes the synthesis of an active or functional alkaloid.

As used herein the term “gene” refers to a segment of DNA or its complement that is involved in producing a polypeptide chain, including regions preceding (leader) and following (trailer) the coding sequence as well as intervening sequences (introns) between individual coding sequence (exons). A “loline alkaloid gene” refers to at least any of the ORFs of SEQ ID NO. 15 and SEQ ID NO. 16.

As used herein the term “gene cluster” refers to a set of (e.g., three or more) closely related genes that code for the same or similar proteins and which are usually grouped together on the same chromosome. A “loline alkaloid gene cluster” refers to a set of genes (e.g., three or more) encoded by at least any of the ORFs of SEQ ID NO. 15 or SEQ ID NO. 16.

As used herein the term “genetically engineered host cell” is meant a host cell where the native gene cluster or subunits thereof has/have been deleted using recombinant DNA techniques. Thus, the term would not encompass mutational events occurring in nature. A “host cell” is a cell derived from a procaryotic microorganism or a eucaryotic cell line cultured as a unicellular entity, which can be, or has been, used as a recipient for recombinant vectors bearing the alkaloid gene clusters of the invention. The term includes the progeny of the original cell which has been transfected. It is understood that the progeny of a single parental cell may not necessarily be completely identical in morphology or in genomic or total DNA complement to the original parent, due to accidental or deliberate mutation. Progeny of the parental cell, which are sufficiently similar to the parent to be characterized by the relevant property, such as the presence of a nucleotide sequence encoding desired biosynthetic enzymes, are included in the definition, and are covered by the above terms.

As used herein the term “loline alkaloid analog” or “analog” refers to a compound or molecule that resembles a loline alkaloid and that contains one or more structural

differences relative to the loline alkaloid. Preferably, the loline analog has a desired activity of loline alkaloid although a loline analog may have enhanced or the same activity than products of the loline alkaloid gene cluster. For example, the degree of saturation of at least one bond in the loline alkaloid structure can be changed (e.g., a single bond can be changed to a double or triple bond, or the converse), a bond can be removed, one or more carbon, oxygen or hydrogen atoms can be replaced with a different atom or a chemical moiety (e.g., a halogen, oxygen, nitrogen, sulfur, hydroxy, methoxy, alkyl, aryl, cycloalkyl, heterocycle, amine, amide, ketone, aldehyde, etc.) and the like. Also other peripheral groups, such as OH groups, methyl groups, O-methyl groups, halogene atoms etc. can be added, modified or removed. Other types of derivatives of loline that would be encompassed by the term “loline alkaloid analog” are known in the art. Non-limiting examples are norloline, N-methyllooline, N-formyllooline, N-formylnorloline, N-acetyllooline and N-acetylnorloline.

As used herein the term “loline alkaloid derivative” or “derivative” refers to a compound or molecule, that may be produced from loline in one or more steps or with few chemical or moiety modifications.

As used herein the term “loline-type alkaloid” refers to a compound or molecule that is encoded by one or more native gene of, or a variant, hybrid, mutant, analog or derivative thereof, at least SEQ ID NO. 15 or SEQ ID NO. 16.

As used herein, the term “modification enzyme” or “tailoring enzyme” refers to a protein or enzyme that is involved in modifying an alkaloid after its core has been synthesized by the necessary components to catalyze the production of an active or functional alkaloid. Exemplary, modification enzymes involved in loline-type alkaloid synthesis include, without limitation, oxidoreductases, dioxygenases and N-methyltransferase.

As used herein, the term “modification step” or “tailoring step” refers to an action or actions taken by a protein or enzyme to modify an alkaloid after its core has been synthesized by the necessary components to catalyze the production of an active or functional alkaloid.

As used herein the term “mutant” refers to a nucleic acid compound, protein, molecule, vector or cell resulting from mutation of the native wild type coding sequence or subunits thereof.

As used herein the term “mutation” refers to any change that alters a native coding sequence either by displacement, addition, deletion, insertion, cross-linking, or other destruction or substitution of one or more nucleotides of the native coding sequence. Techniques for modifying nucleotide sequences, such as site-directed mutagenesis, are also known to those skilled in the art.

As used herein the term “nucleic acid” sequence can include, but is not limited to, procaryotic sequences, eucaryotic mRNA, cDNA from eucaryotic mRNA, genomic DNA sequences from eucaryotic (e.g., mammalian) DNA, and even synthetic DNA sequences, and complements thereof. The term also captures sequences that include any of the known base analogs of DNA and RNA such as, but not limited to 4-acetylcytosine, 8-hydroxy-N6-methyladenosine, aziridinylcytosine, pseudoisocytosine, 5-(carboxyhydroxymethyl)uracil, 5-fluorouracil, 5-bromouracil, 5-carboxymethylaminomethyl-2-thiouracil, 5-carboxymethylaminomethyluracil, dihydrouracil, inosine, N6-isopentenyladenine, 1-methyladenine, 1-methylpseudo-uracil, 1-methylguanine, 1-methylinosine, 2,2-dimethylguanine, 2-methyladenine, 2-methylguanine, 3-methyl-cytosine, 5-methylcytosine, N6-methyladenine,

7-methylguanine, 5-methylaminomethyluracil, 5-methoxyaminomethyl-2-thiouracil, beta-D-mannosylqueosine, 5'-methoxycarbonylmethyluracil, 5-methoxyuracil, 2-methylthio-N6-isopentenyladenine, uracil-5-oxyacetic acid methylester, uracil-5-oxyacetic acid, oxybutoxosine, pseudouracil, queosine, 2-thiocytosine, 5-methyl-2-thiouracil, 2-thiouracil, 4-thiouracil, 5-methyluracil, N-uracil-5-oxyacetic acid methylester, uracil-5-oxyacetic acid, pseudouracil, queosine, 2-thiocytosine, and 2,6-diaminopurine. A transcription termination sequence will usually be located 3' to the coding sequence.

As used here the term "open reading frame" or "ORF" refers to a region of a nucleic acid molecule that contains a series of triplet bases coding for amino acids without any termination codons. An "open reading frame" includes any start codons.

As used herein the term "replacement gene cluster" is meant any set of genes (e.g., three or more), optionally including genes encoding modification or tailoring enzymes, capable of producing a functional gene cluster when under the direction of one or more compatible control elements, as defined above, in a host cell transformed therewith. The term "replacement gene cluster" encompasses three or more genes encoding for the various proteins necessary to catalyze the production of an alkaloid. A "replacement gene cluster" need not include all of the genes found in the corresponding cluster in nature. Rather, the gene cluster need only encode, but is not limited to, the necessary components to catalyze the production of an active alkaloid. For example, if the gene cluster includes, for example, eight genes in its native state and only three of these genes are necessary to provide an active alkaloid, only these three genes need be present, and a variety of the non-necessary genes may optionally be present. The term, "replacement gene cluster" may also contain genes coding for modification or tailoring enzymes or tailoring enzymes to the core alkaloid catalyzed by the necessary components to catalyze the production of an active or functional alkaloid. Furthermore, a replacement gene cluster can include genes derived from a single species, or may be hybrid in nature with, e.g., a gene derived from a cluster for the synthesis of a particular alkaloid replaced with a corresponding gene from a cluster for the synthesis of another alkaloid. Hybrid clusters can include genes derived from different species. The genes included in the replacement gene cluster need not be the native genes, but can be variants, mutants or analogs thereof. Variants are prepared by methods known in the art (see Maniatis et al. *Molecular Cloning: A Laboratory Manual* (Current Edition)). Mutants or analogs may be prepared by the deletion, insertion or substitution of one or more nucleotides of the coding sequence. Techniques for modifying nucleotide sequences, such as site-directed mutagenesis, are described in the literature. The genes included in the replacement gene cluster need not be on the same plasmid or if present on the same plasmid, can be controlled by the same or different control sequences.

As used herein, the term "subunit" refers to a part of a gene cluster including, for example, a module, domain, gene, or open reading frame, and parts thereof. A "subunit" may comprise for example, a gene or genes derived from a single species or may be hybrid in nature (e.g., a gene derived from a cluster for the synthesis of a particular alkaloid replaced with a corresponding gene from a cluster for the synthesis of another alkaloid.). A "subunit" may comprise variants, mutants, analogs or derivatives of the native gene(s). Variants, mutants, analogs or derivatives thereof may be prepared by techniques known to those of

skill in the art, including, without limitation, the displacement, addition, deletion, insertion, cross-linking, or other destruction or substitution of one or more nucleotides of the coding sequence. Techniques for modifying nucleotide sequences, such as site-directed mutagenesis, are also known in to those skilled in the art.

As used herein the term "loline alkaloid variant" or "variant" refers to a nucleic acid sequence that hybridizes to an isolated nucleic acid sequence under high stringency conditions and has a desired or enhanced activity of the complement. Variants may include alleles, mutants, hybrids, derivatives, or analogs. Variants also include the polypeptides coded for by these hybridizable nucleic acids.

#### Identification of lolA and lolC

Production of LA in *N. uncinatum* can be regulated by culture conditions, such as carbon and nitrogen source and pH in the culture medium, and is completely suppressed in a complex medium (Blankenship et al., 2001, *Phytochemistry* 58: 395-401), suggesting differential expression of genes involved in LA biosynthesis. Isolation of the genes up-regulated during LA production is a first step in identifying possible enzymes in the biosynthesis of the LA. Different methods are now available for the isolation of differentially expressed genes (Diatchenko et al., 1996, *Proc. Natl. Acad. Sci. USA* 93: 6025-6030; Liang and Pardee, 1992, *Science* 257: 967-971), incorporated herein. One such method, suppression subtractive hybridization (Diatchenko et al., 1996; Diatchenko et al., 1999, *Meth. Enzymol.* 303: 349-380) (incorporated herein), has been particularly useful for identifying differentially expressed genes. This technique was used herein to identify genes up-regulated in *N. uncinatum* during LA production.

Culture conditions inducing or suppressing LA alkaloid accumulation in the fungus *N. uncinatum* (Blankenship et al., 2001) were used in combination with suppression subtractive hybridization for isolation of gene transcripts that are up-regulated during LA production. This approach was highly effective in enriching cDNAs differentially expressed in LA-producing cultures: subtracted cDNAs hybridized much more strongly with cDNAs from LA-producing cultures than with cDNAs from LA-suppressed cultures (See FIG. 2). However, a few weak hybridizing bands were present in the total cDNA from the suppressed cultures, which was expected because very low LA levels accumulated in the suppressed cultures. Success of the approach was further indicated by the identification of lolA and lolC, genes that were present only in the species and isolates that produced LA, and, in the case of lolC, related to a sequence previously found to cosegregate with the LA-producing phenotype in Mendelian analysis of *E. festucae* (Wilkinson et al., 2000, *Mol. Plant-Microbe Interact.* 13: 1027-1033). The relationships of lolA and lolC to known biosynthetic enzymes further suggested that this approach identified transcripts of LA biosynthesis genes.

The subtracted cDNAs comprised approximately 6-7% of all transcripts present in LA-producing cultures. This estimation appears reliable, since the number of independent clones in the cDNA library from LA-producing cultures ( $4.1 \times 10^6$  pfu) greatly exceeds the number of clones ( $1.0 \times 10^6$  pfu) estimated to be required for a library representing the complexity of the original mRNA population (Ausubel et al., 2001).

A relatively small number of the subtracted cDNAs and cDNA library clones were sequenced. Rather than conducting extensive sequencing, we focused on some of the cDNAs sequenced in this smaller survey, like lolA and lolC,

giving significant similarity to known genes in amino acid biosynthesis/conversion, to further test their association with LA production. These cDNAs appeared promising candidates, since it has been hypothesized earlier that LA have polyamines as precursors, which in turn are products from amino acid metabolism.

Among cDNAs isolated by the subtraction five independent clones from two alleles of genes designated lolA were identified. However, *N. uncinatum* has at least two copies of lolA and lolC. The lolA alleles encode predicted proteins significantly similar to aspartate kinases, the first step in biosynthesis of methionine, threonine, and isoleucine from aspartate. In addition, one cDNA clone of a gene, lolC, with similarity to fungal enzymes in methionine biosynthesis was identified. Expression of lolA and lolC was clearly up-regulated in the LA-producing cultures compared to expression in the suppressed cultures. Further evidence for involvement of lolA and lolC in LA production was the distribution of these genes among the *Neotyphodium* and *Epichloë* species surveyed, of which eight species produce LA, 12 do not, and one (*E. festucae*) is polymorphic for this phenotype. Restriction of lolA and lolC to LA-producing endophytes indicated that both genes are either involved or physically linked to genes involved in the LA production phenotype. This observation, coupled with the observed up-regulation of lolA and lolC in the LA-producing cultures, lent support to an involvement of both genes in LA production.

Generation of knock-outs of lolA and/or lolC will provide further evidence of their roles in LA production. However, preliminary evidence indicates that *N. uncinatum* has at least two alleles of lolA and the possibility of more than one allele of lolC. Thus, different approaches will be necessary to generate complete knock-outs, one of which could be disruption of the putative lol genes in *N. coenophialum* for which procedures for knock-outs and double knock-outs have recently been developed.

The ORFs of the lolA alleles in *N. uncinatum* predicted proteins with lengths of approximately 210 amino acids, much shorter than the sizes of known aspartate kinases (for example, aspartate kinase of *Sc. pombe*, GenBank accession T39822, has a length of 519 amino acids). Potential reasons for this disparity could include truncation in the RT-PCR due to incomplete extension by the reverse transcriptase, or incorrect annealing of the 5' and 3' end-specific cDNA primers to internal gene sequences. cDNA-based northern analysis (see FIG. 3), indicated a strong band of the expected size for an mRNA encoding 210 amino acids, whereas incomplete extension would probably have resulted in multiple bands or smear in the total cDNA. Moreover, despite being very close in size, the two allelic lolA cDNAs varied in the lengths of their 5' and 3' terminal sequences (not shown). Because of this difference, truncation due to incorrect primer annealing also appears unlikely, leaving the possibility that the lolA gene encodes a protein much shorter than known aspartate kinases. The predicted lolA amino acid sequences have similarity only to the C-terminal region of aspartate kinase, but not to the N-terminal regions, containing regions for substrate affinity and the active center (Arévalo-Rodríguez et al., 1999). A search of the PROSITE database further indicated that the predicted lolA sequences do not have an N-terminal consensus sequence typical of aspartate kinases. The C-terminal region of aspartate kinases, to which the predicted lolA products have similarity, is thought to be involved in allosteric response of the enzyme (Arévalo-Rodríguez et al., 1999). It is thus possible that the predicted lolA proteins may have a binding site for

an allosteric modulator similar to the modulators acting on aspartate kinase, which are normally allosterically regulated by the amino acids lysine, threonine, or isoleucine.

Multiple steps have been identified for the biosynthesis of the more common plant pyrrolizidines, the senecio alkaloids. Senecio alkaloids are synthesized from polyamines, such as putrescine (derived from decarboxylated ornithine) and spermidine. In part because of their structural similarities with senecio alkaloids, a pathway from polyamines has been proposed for LA (Bush et al., 1993). Relative positions of carbon and nitrogen atoms in the 1-aminopyrrolizidine structure (see FIG. 1) would be consistent with spermidine or a related compound as precursor, and spermidine is ultimately derived from the amino acids ornithine and methionine. Aspartate kinase and homocysteine synthase (or related enzymes) are steps in biosynthesis of methionine, which in turn is a precursor to decarboxylated S-adenosyl-methionine, the source of the aminopropyl moiety of spermidine. The association of lolA and lolC with LA production indeed suggests possible LA-biosynthesis from aspartate via methionine. However, the substantial differences between predicted lolA and known aspartate kinases may cast doubt on this possibility. Nevertheless, we have observed specific incorporation of 4-<sup>13</sup>C-Asp into LA, indicating that aspartate is a precursor, although the exact sequence of biosynthetic steps remains to be established. Moreover, lolC also had similarity to an enzyme in the biosynthesis of rhizobitoxine, a bacterial product which enhances nodulation. The activity of this enzyme encompasses formation of serinol and dihydrorhizobitoxine biosynthesis, thus synthesis of compounds different from methionine precursors, further indicating that LA biosynthesis could differ from common amino acid and/or polyamine biosynthesis.

Another cDNA obtained with the subtraction had similarity to a putative zinc-finger transcription factor. Interestingly, in fungi such as *Fusarium sporotrichioides* and *Em. nidulans*, transcriptional regulators can be part of secondary metabolite pathway clusters, raising the possibility that a specific transcriptional regulator also exists for LA genes. The probable transcription factor found here has similarities to C2H2 zinc-finger transcription factors. A C2H2-like transcription factor was found to be involved in the control of genes in the biosynthesis of trichothecene, a secondary metabolite produced by *F. sporotrichioides*. In our study, however, detection of the C2H2-like gene did not correlate with LA production in endophytes. Therefore, it likely that this putative transcription factor might be specifically expressed in *N. uncinatum* under the culture condition used to induce LA production, but may not be a specific regulator for LA biosynthesis genes. Another possibility, however, is that this factor regulates LA genes in *N. uncinatum*, but different factors regulate the orthologous genes in other endophyte species. In fact, loline alkaloids are not produced by other endophyte species in these culture conditions despite the presence of lolA and lolC, and despite their production of LA when symbiotic with plants. Therefore, the possibility of a unique regulator of LA synthesis in *N. uncinatum* warrants further investigation.

Other genes up-regulated during LA production that gave significant matches with known genes or sequences were a putative homing endonuclease, generally associated with unusual DNA splicing and incorporation events, and significant matches of cDNAs to sequences in the *Neurospora crassa* genome. However, for none of these genes do we currently have direct evidence for involvement in LA production. One sequence identified in four clones (P3, K8, C37, D5) was also detectable (by Southern blot) in at least

one non-producer, *E. festucae* CBS 102477, but not in the LA producers *N. coenophialum* ATCC 90664 and *E. festucae* CBS 102475 (data not shown), suggesting that this gene is not involved in LA production.

Further Investigations into Biosynthesis of the Loline Alkaloids.

Very little is known about the regulation of secondary metabolism in grass endophytes and many other fungi. The approach used here is a crucial step towards elucidating the biosynthesis of LA, allowing the isolation of genomic copies of *N. uncinatum* genes closely associated with LA production. Secondary metabolite pathway genes are frequently clustered in fungal genomes (Keller and Hohn, 1997, *Fung. Genet. Biol.* 21: 17–29; Seo et al., 2001, *Fung. Genet. Biol.* 34: 155–165; Tudzynski et al., 1999, *Mol. Gen. Genet.* 261: 133–141). The finding of genes associated with LA production now permits investigations of potential clustering of LA genes in genomes of LA-producing endophytes.

#### EXAMPLE 1

All chemicals (including antibiotics) and reagents used in the experiments described in the examples below were obtained from Sigma Corp. (St. Louis, Mo., USA), unless indicated otherwise. Growth media were from Difco Laboratories (Detroit, Mich., USA). Agarose for DNA and RNA gel electrophoreses was supplied by Bio Whittaker Molecular Applications (Rockland, Me., USA). For routine PCR of templates <1.0 kb, AmpliTaq Gold (Applied Biosystems, Foster City, Calif., USA) was used. PCRs for cDNA synthesis, suppression subtractive hybridization, and templates >1.0 kb were performed with the Advantage cDNA PCR Kit (Clontech, Palo Alto, Calif., USA).

Fungal Cultures and Analyses of Loline Alkaloids.

Mycelium of *Neotyphodium uncinatum* (voucher specimen CBS 102646 at Centraalbureau Voor Schimmelcultures, Utrecht, The Netherlands) was isolated from grass leaf tissues [meadow fescue (*Lolium pratense*=*Festuca pratensis*), plant 167 in our plant collection] on potato dextrose agar as previously described (Blankenship et al., 2001). The following procedures were carried out as described by Blankenship et al. (2001) with modifications. After 21 days of growth at 22° C. on PDA plates, 10 fungal colonies were transferred to, and homogenized in, 20 ml of LA-inducing medium (Blankenship et al., 2001) with 15 mM asparagine and 20 mM sucrose as the nitrogen and carbon sources, respectively. Ten ml of the homogenate was added to a 500-ml Erlenmeyer flask with 100 ml of fresh LA-inducing medium, and the culture incubated at 22° C. with rotary shaking (100 rpm). After five days of growth, mycelium was harvested in 50-ml tubes (Falcon, distributed by Becton Dickinson Labware, Lincoln Park, N.J., USA) by centrifugation (2000×g rcf), and the mycelium homogenized in 20 ml LA-inducing medium as described. To initiate main cultures for LA production, 1 ml of homogenized mycelium was added to 25 ml of LA-inducing medium and cultures were incubated as described above. To suppress LA production in cultures, but maintain growth conditions similar to the minimal medium, potato dextrose broth was added to give half-strength final concentration in the medium, and asparagine and sucrose were added to 7.5 mM and 10 mM final concentration, respectively. Except for this variation in medium composition, all growth conditions and source of inoculum for LA-suppressed cultures were the same as for LA-induced cultures. Cultures of *N. uncinatum* were grown under the conditions inducing or suppressing LA accumu-

lation, and harvested during early accumulation when LA levels in the producing medium were <20 µg ml<sup>-1</sup>. (Levels in similar cultures later reached >1000 µg ml<sup>-1</sup> in producing, but <10 µg ml<sup>-1</sup> in suppressed cultures.)

LA extraction from freeze-dried culture filtrates or plant tissues, and quantitation by gas chromatography (GC) analysis, were performed as described by Blankenship et al. (2001).

RNA Extraction, DNase Treatment, and Analysis.

Mycelium was harvested by vacuum filtration through Whatman No. 1 filter paper (Whatman International Ltd, Maidstone, England, UK) and total RNA was extracted from 0.2–0.3 g (fresh weight) mycelium with the RNeasy Plant Minikit (Qiagen Inc, Valencia, Calif., USA). Co-purified DNA was removed with the DNA-free™ kit (Ambion, Austin, Tex., USA) by treating the extracts (50 µl) with 2 units of DNaseI for 30 min at 37° C., whereupon DNase activity was stopped with DNase Inactivation Reagent (Ambion). Purified RNA was quantified by measuring absorbance at 260 nm and 280 nm in a Genequant spectrophotometer (Amersham Pharmacia Biotech, Piscataway, N.J., USA). Integrity of the total RNA was checked by electrophoresis in 1.2% formaldehyde agarose gels.

cDNA Synthesis and Suppression Subtractive Hybridization.

Total RNA was extracted from LA-producing and LA-suppressed cultures. However, low mycelial biomass resulted in low RNA yields. To obtain enough cDNA for subtractive hybridization and expression analysis (cDNA-based Northern; Endege et al., 1999, *BioTechniques* 26: 542–548), cDNA was synthesized and amplified with the SMART™ PCR cDNA Synthesis Kit (Clontech). Three µl of RNA solution (300 ng/µl) was reverse transcribed with Superscript™ II following the instructions of the manufacturer (Gibco BRL, Grand Island, N.Y., USA). The reverse-transcription reaction was diluted with TE buffer to a total volume of 50 µl. Amplification of cDNA by long-distance PCR was carried out according to the protocol of the SMART™ PCR cDNA Synthesis Kit (Clontech) in a GeneAmp PCR System 2400 thermocycler (Perkin Elmer Inc., Boston, Mass.). One µl of the diluted reverse-transcription reaction was used, and the number of PCR cycles required for optimum amplification of cDNA was determined according to the manufacturer's protocol (Clontech). The amplification step allows bulking up on cDNA, while likely maintaining the complexity of the original RNA population.

Suppression subtractive hybridization (Diatchenko et al., 1996; Diatchenko et al., 1999) was performed with the PCR-Select™ cDNA Subtraction Kit (Clontech) essentially as described in the Clontech PCR-Select™ manual. The PCR-Select procedure consists of RsaI digestion of cDNA, ligation of digested tester DNA (containing differentially expressed genes of interest) to two adaptors (1 and 2R, specified in the manual), and two rounds of hybridization with driver DNA used to subtract out cDNAs not differentially expressed in the tester, followed by amplification of the subtracted cDNA by PCR with primers specific to the adaptors. Primary PCR is followed by secondary PCR with nested primers. Only DNA fragments carrying different adaptors at each end tend to amplify exponentially.

cDNA previously amplified with the cDNA Synthesis Kit was purified and digested with RsaI. The digested cDNA was cleaned up with the PCR Purification Kit (Qiagen), eluted into 50 µl of elution buffer, and ethanol precipitated, and adaptors ligated to the tester DNA. In the first hybridization, 13 ng of adaptor-ligated tester was mixed with 147

ng of driver in two separate reactions (each reaction with adaptor 1 and 2R, respectively) and, after denaturation (98° C. for 1.5 min), were allowed to anneal for 9 hr at 68° C. After this first hybridization, the two reactions were combined in the presence of 98 ng of denatured fresh driver and a second hybridization performed for 16 hr at 68° C. Amplification of tester-tester hybrids was performed as described in PCR Purification Kit manual. Efficiency of the ligation to the adaptors and of the subtraction was tested and confirmed as called for in the protocol, using two primers (5'-GTTGATCTCCAAGATCCGTGAGG-3' (SEQ ID NO. 1) and 5'-GTTTCGTCCGAGTTCTCGAC-3') (SEQ ID NO. 2) specific to the  $\beta$ -tubulin gene (tub2).

Upon completion of suppression subtractive PCR, a portion of the product mixture was ligated into pCR®4Blunt-TOPO®, using the Zero Blunt TOPO PCR Cloning Kit (Invitrogen, Carlsbad, Calif., USA), and electroporated into TOP10 cells provided with the kit, to obtain a subtracted expressed sequence tag (EST) bank. Another portion was used to generate hybridization probe PCR-labeled with digoxigenin (DIG) following the protocol of the manufacturer (Roche-Boehringer, Indianapolis, Ind., USA).

#### cDNA Library Construction.

cDNA synthesis and library construction were performed with the SMART™ cDNA Library Construction Kit (Clontech) according to the manufacturer's instructions. First-strand cDNA was synthesized with the same amount of RNA as used in the cDNA synthesis for the subtraction, and 2  $\mu$ l undiluted first-strand reaction was used as template to amplify the cDNA. The amplified cDNA was digested with SfiI, size fractionated for removal of low-molecular-size (<0.1 kb) cDNA, and ligated into  $\lambda$ TriplEx2 vector (Clontech). cDNA ligated into vector was added to  $\lambda$  phage Gigapack III Gold packaging extract (Stratagene, La Jolla, Calif., USA), and titered in *E. coli* strain XL1-Blue as specified by the manufacturer. For cDNA library amplification, overnight cultures of XL1-Blue were inoculated with an amount of packaged phage suspension to yield  $1.0 \times 10^5$  pfu per 150 mm plate (Falcon); in total, 15 plates were prepared, so the amplified library was derived from  $1.5 \times 10^6$  primary clones. After incubation overnight at 37° C., to each plate was added 12 ml of  $\lambda$  dilution buffer (100 mM NaCl, 10 mM MgSO<sub>4</sub>, 35 mM Tris-HCl, pH 7.5, 0.01% gelatin), followed by 20 hr incubation at 4° C. The phage suspensions were then titered for each plate. Since differences in titer between plates would affect representation of cDNA clones in the final amplified library, the appropriate volume of each suspension was determined so that, when combined, each plate contributed equally to the total number of pfu in the pooled library. After pooling, the titer of the amplified library was  $5.4 \times 10^9$  pfu ml<sup>-1</sup>.

#### Southern Blot and PCR Analysis of Genomic DNA.

Fungal genomic DNA was isolated by the method of Al-Samarrai & Schmid, 2000, *Lett. Appl. Microbiol.* 30: 53–56. Because *Neotyphodium occultans* does not grow autonomously in culture, DNA from the *Lolium multiflorum*-*N. occultans* symbiotum was isolated by the method of Doyle and Doyle, 1990, *Focus* 12: 13–15 for PCR analysis.

Probes for Southern-blot, dot-blot and cDNA-based northern-blot hybridizations were labeled with DIG as described above. Total subtracted cDNA was labeled by using the primary PCR product in the subtraction as template and the nested PCR primers supplied with the PCR-Select™ cDNA Subtraction Kit (Clontech). Probe for lolA was a labeled 523 bp fragment generated by PCR using primers lolA-5' (5'-GTCTGGCGAATTCTACAGACCG-

3') (SEQ ID NO. 3) and lolA-3' (5'-GATGGCCATGTGAG-GAAAGAG-3') (SEQ ID NO. 4). A labeled 1427 bp fragment of the lolC gene was generated by PCR with primers lolC-5' (5'-CGGTGCGCGTCTTCTAAACTTGAC-3') (SEQ ID NO. 5) and lolC-3' (5'-GAATCTTTCCGATG-CAAGGCTTACG-3') (SEQ ID NO. 6).

cDNA-based northern blots were performed with complete cDNA, which was gel fractionated and Southern blotted to Hybond™-N+ nylon membranes (Amersham Pharmacia Biotech). Southern blotting of DNA by alkaline transfer, as well as dot blotting onto Hybond™-N+ nylon membranes (Amersham Pharmacia Biotech) and DNA hybridizations were accomplished with standard protocols (Ausubel et al., 2001). Membranes were washed with 0.1 $\times$ SSC, 0.1% SDS, once for 15 min at room temperature, then for 20 min and again for 30 min at 75° C. (membranes with cDNA) or at 65° C. (membranes with genomic DNA). Chemiluminescent detection of probes hybridized to DNA with anti-DIG antibodies was performed according to the protocol of the supplier (Roche-Boehringer). To visualize labeled probes hybridizing to DNA, membranes were exposed to Hyperfilm™ ECL™ Chemiluminescence film (Amersham Pharmacia Biotech).

PCR screening for lolA was performed on endophyte genomic DNA with primers lolA-3' and lolA-5'. PCR screening for lolC employed primers lolC-3'a (5'-GGTCTAGTATTACGTTGCCAGGG-3') (SEQ ID NO. 7) and lolC-5'a (5'-GTTGCCCCACGGTGCGCGTCTTC-3') (SEQ ID NO. 8). PCR was performed with 35 cycles of 95° C. for 30 s, 62° C. for 30 s, and 72° C. for 1 min. As a positive control for DNA integrity in this screening, a tub2 gene fragment was amplified by PCR with primers 5'-TG-GTCAACCAGCTCAGCACC-3' (SEQ ID NO. 9) and 5'-GAGAAAATGCGTGAGATTGT-3' (SEQ ID NO. 10) (Byrd et al., 1990), with 35 cycles of 95° C. for 30 s, 55° C. for 30 s, and 72° C. for 1 min.

#### cDNA Library Screening and Conversion of Phage to Plasmid Clones.

Screening of the cDNA library was essentially as described by Ausubel et al. (2001). Phage were plated in a lawn of *E. coli* XL1-Blue, and phage lifts were on Hybond™-N+ nylon membranes (Amersham Pharmacia Biotech). To convert clones in  $\lambda$ TriplEx2 to plasmid form, plaques were added to *E. coli* strain BM25.8 (which expresses Cre-recombinase) as per the supplier's protocols (Clontech). Single, isolated colonies were selected on LB agar with ampicillin, picked and grown in LB with ampicillin, and plasmids isolated by a rapid alkaline procedure (Ahn et al., 2000, *BioTechniques* 29: 266–368). To verify that a plasmid carried the desired insert, 3  $\mu$ l of each plasmid was spotted onto a nylon membrane for dot blotting, and the membrane hybridized to the probe initially used to identify the  $\lambda$ -phage clone.

#### Plasmid DNA Isolation, Sequencing, and Database Search of cDNAs.

Plasmid DNA was isolated from bacterial cells by the rapid alkaline miniprep procedure (Ahn et al., 2000). Plasmid inserts were sequenced with primers L-triplEx 5' (5'-TCCGAGATCTGGACGAGC-3') (SEQ ID NO. 11) and L-triplEx 3' (5'-TAATACGACTCACTATAGGG-3') (SEQ ID NO. 12), specific to vector regions flanking the cDNA inserts. DNA cloned into TOPO vector (Invitrogen) was sequenced with M13-reverse (5'-CAGGAAACAGCTATGAC-3') (SEQ ID NO. 13) and M13-forward (5'-GTAAAACGACGGCCAG-3') (SEQ ID NO. 14) primers. Sequencing of DNA was performed with the BigDye Ter-



minator Cycle Sequence Kit (Applied Biosystems) on an ABI 310 automated sequencer (Applied Biosystems) or, for high-throughput sequencing, the CEQ2000XL DNA Analysis System (Beckman-Coulter, Fullerton, Calif., USA) with the CEQ™ DTCS—Quick Start Kit (Beckman-Coulter). DNA sequences obtained were entered into the basic local alignment search tool (BLAST; Altschul et al., 1997) programs at the National Center for Biotechnology Information site (NCBI; <http://www.ncbi.nlm.nih.gov/BLAST/>) to search the nonredundant nucleic acid (nr) database, and at the Whitehead Institute site (<http://www-genome.wi.mit.edu/annotation/fungi/neurospora/>) to search the *Neurospora crassa* database for similar sequences. Matches with known DNA/protein sequences in these databases were considered significant at  $E \leq 10^{-4}$ . Predicted protein sequences were analyzed for occurrence of biologically significant sites by searching the database of protein families and domains (PROSITE) at ExpPASy (Expert Protein Analysis System; <http://ca.expasy.org/>).

## EXAMPLE 2

## Transcripts Up-Regulated in Loline Alkaloid-Producing Cultures.

To gauge the success of the suppression subtractive hybridization, and to get an overview of the number and sizes of cDNAs potentially enriched by the subtraction, cDNA-based northern analysis on total cDNA from the cultures were conducted (FIG. 2). The subtracted cDNAs hybridized much more strongly with total cDNA from the LA-producing cultures than to total cDNA from the suppressed cultures, demonstrating enrichment of cDNAs up-regulated in the LA-producing cultures. Multiple sizes of cDNAs hybridized with the subtracted cDNAs, indicating up-regulated expression of several different genes in the LA-producing cultures.

The  $\lambda$ TriplEx2 library created with complete cDNA from LA-producing cultures contained a total of  $4.1 \times 10^6$  primary pfu. From this,  $1.5 \times 10^6$  primary pfu, likely representing the complete cDNA population obtained from the LA-producing cultures, were amplified to  $5.4 \times 10^9$  pfu  $\text{ml}^{-1}$ .

The number of recombinant clones (=likely containing cDNA inserts) in the unamplified library was assessed by blue-white screening of the plated library at  $3.3 \times 10^6$  pfu (>80% of all primary library clones). To determine the percentage of library clones that contained transcripts up-regulated in the LA-producing cultures, phage lifts were probed with total subtracted cDNA. Approximately 5.3% of all clones (about 6.6% of the presumed recombinant clones) hybridized with the subtracted cDNA (data not shown).

## EXAMPLE 3

## Several Subtracted cDNA Similarities with Database Sequences.

Twenty clones from the subtracted EST bank, and six library clones hybridizing to total subtracted cDNA were sequenced. In the suppression subtractive method incomplete suppression can result from amplification of tester-tester hybrids which have only one of the two adaptors at each end. However, all ESTs sequenced from the bank of subtracted cDNAs had the two different adaptors at their ends, indicating that contaminating background due to non-specific amplification of tester was very low.

Sequences of subtracted cDNA clones, as well as inserts in library clones that hybridized to subtracted cDNAs, were used to query databases by various BLAST algorithms. For several subtracted cDNAs (Table 1) and cDNAs from the  $\lambda$ -library (Table 2), matches to known protein sequences in NCBI, or sequences in the *Ns. crassa* database were identified. Five library and subtracted clones had significant similarity to the C-terminal amino acid regions of aspartate kinases (Tables 1 & 2). Two of the library clones with similarity to aspartate kinase were identical to each other in sequence (P2 and P16). However, a third library clone (P17) differed from the other two (94% identity), but had 100% sequence identity with two subtracted clones (B8 and C5). The detected variation in sequence among the clones suggested more than one form of this gene in *N. uncinatum*. The presence of two genomic alleles of the AspK-related gene in *N. uncinatum* was verified by PCR with primers with allele-specific nucleotides at their 3'-ends (data not shown). Because other results of this study (described below) strongly associate these sequences with LA production, we will hereafter designate the corresponding genes as lolA alleles; the two allelic sequences have been submitted to GenBank (accessions AF439396 and AF439395).

The predicted proteins (209 and 210 aa) encoded by lolA alleles were smaller than known aspartate kinases (which usually exceed 500 aa) and had similarity only to the C-terminal regions of aspartate kinases. This was indicated by protein sequence alignments with known aspartate kinases that gave the most significant matches in BLAST. These proteins, from *Schizosaccharomyces pombe* and *Saccharomyces cerevisiae* (GenBank accessions T39822 and P10869), aligned with a region starting at amino acid position 47 and ending at amino acid 204 of the predicted lolA proteins and had 25–26% identity to lolA, but only within a region of the known aspartate kinases starting at about amino acid 351 and ending at amino acid 495. PROSITE searches with the predicted amino acid sequences of the two lolA alleles indicated that both lacked the aspartate kinase signature, defined by PROSITE as [LIVM]-x-K-[FY]-G-G-[ST]-[SC]-[LIVM], a conserved region located near the N-terminal end of aspartate kinases.

One subtracted clone, D6 (Table 1), gave highly significant matches with fungal (*Ns. crassa*, *Emericella nidulans*, and *S. cerevisiae*) genes for O-acetylhomoserine-(thiol)lyase (homocysteine synthase), and the related enzymes, cystathionine  $\gamma$ -synthase and cystathionine  $\beta$ -lyase, all of which are  $\gamma$ -type pyridoxal phosphate-containing enzymes in sulfur-containing amino acid biosynthesis and interconversion pathways. Additionally, significant similarity was found with an enzyme in the biosynthesis of the bacterial compound rhizobitoxine. The molecular size of the transcript (between 1.5 to 2 kb, FIG. 3) predicted a protein similar in size to known homocysteine synthases, which are 430–450 amino acids (Sienko et al., 1998). A related sequence was recently identified at a locus associated with LA production in *Epichloë festucae* (Wilkinson et al., 2000; Spiering et al., 2000). Because these data and further evidence presented below associated this sequence with LA production, the corresponding gene was designated lolC (GenBank accessions AF461175, AF461176).

TABLE 1

Matches of subtracted cDNA clones with sequences in non-redundant (nr) and <i>Neurospora crassa</i> database BLAST searches.			
Clones <sup>1</sup>	Length in bp	nr matches, identify (%), and E values	<i>Ns. crassa</i> matches, identity (%), and E values
K8, C37, D5	468	— <sup>2</sup>	—
B8, C5 <sup>3</sup>	633	<i>Sc. pombe</i> <sup>4</sup> aspartate kinase gene, 24%, 5e-07	—
N17, C7	1521	—	—
C2, D1	724	Krüppel-like C2H2 zinc finger transcription factors, 44%, 7e-08	various contigs (1.246; 1.392; 1.622; 1.686; 1.151), 35-52%, 4e-20 to 1e-05
C1, C3	283	—	—
E21	388	—	—
A6	370	—	—
A7	379	—	—
A8	554	—	Contig 1.291 (57.61-57.83 kb), 56%,
C8	430	<i>Sc. pombe</i> hypothetical protein, 42%, 2e-05	Contig 2.503 (15.96-16.19 kb), 38%, 7e-07
D2	472	—	—
D3	269	—	—
D4	694	rRNA intron-encoded homing endonuclease, 86%; 2e-11	various contigs (2.820; 2.798; 2.816; 2.793; 2.790; 2.943; 2.796; 2.843; 2.831; 2.957), 46-53%, 4e-10 to 3e-08
D6 <sup>5</sup>	374	homocysteine synthase/O-acetylhomoserinesulfhydrylase, 53%, 1e-22; related enzymes in methionine/cysteine biosynthesis, <1e-07; RtxA, enzyme in rhizobitoxine biosynthesis, 37%, 1e-10	Contig 2.65, 54%, 3e-24; Contig 2.688, 34%, 3e-11

<sup>1</sup>Listed in order of frequency from most common to least common.

<sup>2</sup>— = No significant match.

<sup>3</sup>lolA clones.

<sup>4</sup>*Schizosaccharomyces pombe*.

<sup>5</sup>lolC clone.

TABLE 2

cDNA library clones hybridizing to total subtracted cDNA.				
Clone/s	Length of nucleotide sequence [bp]	Length of putative ORF [aa]	Identical in sequence to subtracted clones/s	BLAST matches, identify (%), and E values
P2, P16 <sup>6</sup>	838, 880 <sup>7</sup>	210	none	aspartate kinase ( <i>Sc. pombe</i> ) 25%, 3e-07
P3	446	35	K8, C37, D5	— <sup>8</sup>
P15	725	111	none	<i>Ns. crassa</i> contig 1.1526 (36.73-36.96 kb), 36%, 5e-10
P17	774	209	B8, C5	aspartate kinase ( <i>Sc. pombe</i> ), 24%, 5e: 07
P18	449	30	none	

<sup>6</sup>lolA clones

<sup>7</sup>Difference in length of 3' untranslated region.

<sup>8</sup>— = No significant match.

## EXAMPLE 4

## Association of the lolA and lolC Genes with Loline Production.

Genomic sequences of lolC and one allele of lolA (clone P1.7) were obtained by using primers based on the cDNA of the lolA gene and genomic sequence of the lolC gene from *E. festucae* (data not shown). This information was used to design primers for specific probes and detection of lolA and lolC sequences in cDNA-based northern analysis of complete cDNAs from LA-producing and suppressed cultures (FIG. 3). Both sequences were expressed in the LA-producing cultures. Strong hybridizing bands were detected from the complete cDNA from LA-producing cultures, whereas faint bands were obtained from the complete cDNA from the suppressed cultures.

LA production is a trait specific to endophyte species (Christensen et al., 1993; Siegel et al., 1990; TePaske and Powell, 1993) or even isolates within species (Wilkinson et al., 2000). Consequently, we reasoned that genes associated with LA production would be present in all LA-producing endophytes, but might be absent from endophytes that do not produce LA. For many endophyte species and isolates available from our collection the LA phenotypes were

known from the literature (Table 3), and these were confirmed by GC analyses of plants symbiotic with these endophytes. Additional species or isolates included in this survey were similarly assessed for LA production (Table 4). In Southern-blot analysis of genomic DNAs from two LA producers and two nonproducers, lolA and lolC sequences hybridized only with DNA from the endophytes that produce LA (FIG. 4). The probes used to detect lolA and lolC did not have sites for the restriction enzyme used in the genomic digests, so for each putative allele one hybridizing band was expected. In *N. uncinatum*, two bands were observed from the genomic DNA probed with lolA, indicating at least two alleles of this gene; hybridization with lolC gave only one band, suggesting only one allele of this gene was present, but the possibility that this single band represented multiple alleles of lolC could not be excluded. In *E. festucae*, hybridization with the two probes gave one strong hybridizing band for each, suggesting one allele of each gene. The additional, fainter hybridizing bands present on the blots corresponded to some bands on the ethidium bromide-stained gel (not shown) and were, therefore, likely due to non-specific binding of the probes to mitochondrial or repetitive genomic DNA.

Diagnostic PCR was used with primers specific to the lolA and lolC genes for detection of these sequences in all

species and isolates listed in Table 3. Detection of the lolA and lolC genes in endophytes was strictly associated with the LA-producing phenotype (FIG. 5). In addition, the two genes were detected in *N. chisosum* (ATCC 64037).

The high expression of lolA and lolC in LA-producing cultures of *N. uncinatum*, and the strict correlation of LA production with presence of the two genes in the different endophytes, lent strong support to involvement of the lolA and lolC genes in LA production.

TABLE 3

LA phenotype of endophyte species and isolates used in this study. Indicated are the respective grass hosts which were used in the determination of the LA, and from which the endophytes in this study were originally isolated.			
Species/isolate <sup>9</sup>	Grass host	Loline phenotype <sup>10</sup>	Reference <sup>11</sup>
1) <sup>12</sup> <i>Epichloë festucae</i> CBS 102477	<i>Festuca rubra</i>	-	1
2) <i>E. festucae</i> CBS 102475	N/A <sup>13</sup>	+	2
3) <i>E. typhina</i> 8	<i>Lolium perenne</i>	-	3
4) <i>Neotyphodium aotearoae</i> CBS 109345	<i>Echinopogon ovatus</i>	+	4
5) <i>N. aotearoae</i> ATCC MYA-1231	<i>E. ovatus</i>	+	4
6) <i>N. australiense</i> CBS 109346	<i>E. ovatus</i>	-	4
7) <i>M coenophiolum</i> ATCC 90664	<i>Lolium arundinaceum</i>	+	3
8) <i>N. huerfanum</i> ATCC 604040	<i>Festuca arizonica</i>	-	3
9) <i>N. inebrians</i> 818	<i>Achnatherum inebrians</i>	-	5
10) <i>N. lolii</i> 138	<i>L. perenne</i>	-	3
11) <i>N. melicicola</i> CBS 109342	<i>Melica decumbens</i>	-	4
12) <i>N. occultans</i> 999	<i>Lolium multiflorum</i>	+	6
13) <i>N. siegelii</i> ATCC 74483	<i>Lolium pratense</i>	+	7
14) <i>Neotyphodium</i> sp. 55	<i>Poa autumnalis</i>	+	3
15) <i>Neotyphodium</i> sp. 87	<i>Festuca paradoxa</i>	-	3
16) <i>Neotyphodium</i> sp. LpTG-2 Lp1	<i>L. perenne</i>	-	8
17) <i>Neotyphodium</i> sp. 269	<i>Hordeum bogdani</i>	-	4
18) <i>Neotyphodium</i> sp. 270	<i>Hordeum brevisubulatum</i>	-	4
19) <i>Neotyphodium</i> sp. 361	<i>Hordeum europaeum</i>	-	9
20) <i>Neotyphodium</i> sp. FaTG-3 Tf18	<i>L. arundinaceum</i>	+	4
21) <i>Neotyphodium</i> sp. FaTG-2 Tf14	<i>L. arundinaceum</i>	-	4
22) <i>Neotyphodium</i> sp. 4096	<i>Achnatherum robustum</i>	-	4
23) <i>N. uncinatum</i> CBS 102646	<i>L. pratense</i>	+	7

<sup>9</sup>CBS = Centraalbureau voor Schimmelcultures, Fungal Biodiversity Center, Utrecht, The Netherlands (<http://www.cbs.knaw.nl>), ATCC = American Type Culture Collection, Manassas, Virginia, USA (<http://www.atcc.org>). Other designations are from the referenced papers or are laboratory isolate numbers.

<sup>10</sup>"+" = loline-producing, "-" = loline non-producing.

<sup>11</sup>References are (1) Leuchtmann and Schardl (1998), (2) Wilkinson et al. (2000), (3) Siegel et al. (1990), (4) this study (see Table 4), (5) Miles et al. (1996), (6) TePaske and Powell (1993), (7) Cra-ven et al. (2001), (8) Christensen et al. (1993), (9) Leuchtmann et al., (2000).

<sup>12</sup>Numbers before each isolate correspond to the numbers indicated above gel lanes in FIG. 6.

<sup>13</sup>N/A = not applicable. Isolate derived by mating *E. festucae* CBS102477 with an *E. festucae* isolate CBS 102474 from *Lolium giganteum*.

TABLE 4

LA in plants with endophyte species for which the LA phenotype was previously unknown.		
Species/isolate <sup>14</sup>	Host grass	Lolines <sup>15</sup>
<i>Neotyphodium aotearoae</i> CBS 109345	<i>Echinopogon ovatus</i>	1780
<i>N. aotearoae</i> ATCC MYA-1231	<i>E. ovatus</i>	2120
<i>N. australiense</i> CBS 109346	<i>E. ovatus</i>	nd
<i>N. melicicola</i> CBS 109342	<i>Melica decumbens</i>	nd
<i>Neotyphodium</i> sp. FaTG-3 Tf18	<i>Lolium arundinaceum</i>	670
<i>Neotyphodium</i> sp. FaTG-2 Tf14	<i>L. arundinaceum</i>	nd
<i>Neotyphodium</i> sp. 269	<i>Hordeum bogdani</i>	nd

TABLE 4-continued

LA in plants with endophyte species for which the LA phenotype was previously unknown.		
Species/isolate <sup>14</sup>	Host grass	Lolines <sup>15</sup>
<i>Neotyphodium</i> sp. 270	<i>Hordeum brevisubulatum</i>	nd
<i>Neotyphodium</i> sp. 270	<i>Stipa robusta</i>	nd

<sup>14</sup>CBS = Centraalbureau voor Schimmelcultures, Fungal Biodiversity Center, Utrecht, The Netherlands (<http://www.cbs.knaw.nl>), ATCC = American Type Culture Collection, Manassas, Virginia, USA (<http://www.atcc.org>). Other designations are from the referenced papers or are laboratory isolate numbers.

<sup>15</sup>Reported is the sum of N-formyl and N-acetyl lolines in  $\mu\text{g g}^{-1}$  dry weight plant tissue.

nd = not detected (limit of detection =  $10 \mu\text{g g}^{-1}$ ).

## Additional Subtracted cDNAs Matching Known Genes and Genomic Sequences.

As shown in Tables 1 & 2, several other cDNAs isolated by the subtraction method also gave highly significant matches in BLAST searches of the nr and *Ns. crassa* databases. Matches included a zinc-finger transcription factor, a hypothetical protein in *S. cerevisiae*, and a homing endonuclease. Additionally, matches with *Ns. crassa* sequences were identified for putative ORFs of one hybridizing library clone, P15, and one subtracted clone, A8.

A survey of the distribution of the putative zinc-finger transcription factor among eight endophytes differing in LA production (four LA producers and four non-producers) was performed by diagnostic PCR. There was no association of this putative zinc-finger transcription factor gene with LA production; its presence was detected only in two isolates, one LA-producer (*N. uncinatum*) and one non-producer (*N. huerfanum*) (data not shown).

As further indicated in Tables 1 & 2, a number of sequences from library and subtracted clones gave no significant matches with known genes in the nr database and sequences in the *Ns. crassa* genome. For one subtracted clone, N17, the full-length cDNA sequence was obtained by PCR, using an aliquot of the amplified cDNA library and gene and vector-specific primers. A predicted ORF of 363 amino acids was found within the N17 cDNA (data not shown), but this amino acid sequence did not give significant matches with any genes or sequences in the nr and *Ns. crassa* databases or known protein patterns in the PROSITE database.

## EXAMPLE 6

## Identification of the LOL1 and LOL2 Gene Clusters

Central to the present invention is the identification of the loline alkaloid gene clusters LOL1 (SEQ ID NO. 15), and LOL2 (SEQ ID NO. 16) which apparently may also include lolF2 and lolM (SEQ ID NO: 17). The association in *Neotyphodium uncinatum* of lolA and lolC was tested by long-distance-PCR. The 8.2 kb product contained the expected sequences of both, plus two additional open reading frames between them. We then walked outward from this fragment by vectorette-mediated PCR, and in the process identified two gene clusters (LOL1 and LOL2 in FIG. 6).

In addition to lolC and lolA, at least 8 (LOL1) or 7 (LOL2) ORFs were inferred within LOL1 and LOL2 by using a program with an algorithm for prediction of fungal genes. PCR analyses/Southern hybridization on a cDNA library/total cDNA from *N. uncinatum* showed expression of the ORFs lolM, lolF, lolC, lolO, lolA, and lolE, indicating that these contain active genes. The details of the gene predictions and coordinates, i.e., location of the exons in the ORFs of LOL1 and LOL2 are given below. LOL1 and LOL2 differ in sequence (LOL1 has ~95% nucleotide sequence identity to LOL2), thus represent two truly distinct genomic regions. Altogether, ten genes were inferred in the gene clusters, with most of the genes shared between the clusters. PCR and Southern-blot analyses indicated that all ten genes were unique to the loline alkaloid producers among the isolates surveyed in Table 3 (Fung. Genet. Biol. Spiering et al.). Nine of the genes, lolE, lolT, lolP, lolU, lolA, lolO, lolD, lolC and lolF, were found in two allelic forms.

The amino acid sequences deduced from the LOL gene ORFs gave highly significant matches ( $E < 10^{-5}$ ; except lolU

and lolM for which  $E > 0.01$ ) with known enzyme sequences in the protein databases curated by the National Center of Biotechnology Information (<http://www.ncbi.nlm.nih.gov>; NCBI). The gene functions predicted by Genbank searches of the databases at NCBI, and gene orientations within the clusters, thereby indicate that LOL2 contains eight genes (i.e., lolE, lolT, lolP, lolU, lolA, lolO, lolD, and lolC) representing alleles of genes present in LOL1. LOL1 contains an additional gene, named lolF, hitherto not found in LOL2. The genomic location of the additional ORFs, lolF2 and lolM, relative to the two LOL clusters is presently unknown, but we postulate that lolF2 and lolM are located close to LOL2. lolF2 and sequence adjacent to it has ~93% identity to lolF (and sequence adjacent to it) in cluster LOL1.

The LOL1 gene cluster spans about a 25.3 kB region and consists of 9 ORFs. Open reading frames of LOL1 are indicated relative to nucleotide numbers annotated to SEQ ID NO: 15; mRNA sequences of each gene are given by joined exons determined by cDNA sequencing or predicted by the fgenesh (*Neurospora*) gene prediction program at "Softberry", <http://www.softberry.com/berry.phtml?topic=gfind>; gene orientations are indicated by "+" (forward strand) and "-" (reverse strand).

ORF1 of LOL1 is lolE: +strand, join 23457–24195, 24275–24306 (predicted by fgenesh at Softberry).

ORF2 of LOL1 is lolT: –strand, join 23003–22916, 22838–22916, 22420–22246, 22170–21486 (predicted by fgenesh at Softberry).

ORF3 of LOL1 is lolP: +strand, join 19245–19554, 19639–20225, 20287–20694, 20818–20846, 20919–21045 (predicted by fgenesh at Softberry).

ORF4 is lolU: –strand, join 17377–17023, 16832–15889 (predicted by fgenesh at Softberry).

ORF5 of LOL1 is lolA: +strand, join 14951–15476, 15545–15648 (determined by sequencing of lolA cDNA).

ORF6 of LOL1 is lolO: –strand, join 13961–13770, 13781–13677 (predicted by fgenesh at Softberry).

ORF7 of LOL1 is lolD: +strand, join 10462–10588, 10945–11115, 11194–11757, 12211–12240, 12376–12383 (predicted by fgenesh at Softberry).

ORF8 of LOL1 is lolC: +strand, join 6903–7000, 7063–7114, 7199–7282, 7364–7723, 7810–8364, 8435–8709 (determined by sequencing of lolC cDNA).

ORF 9 of LOL1 is lolF: –strand, join 5095–5028, 4960–3509, 3448–3346 (predicted by fgenesh at Softberry).

The LOL2 gene cluster spans about a 16.4 kB region and consists of at least 8 ORFs. It appears that LOL2 may include lolF2 and lolM (SEQ ID NO: 17) linked to the 5' end of SEQ ID NO: 16, in which case the LOL2 gene cluster would span about a 24 kB region, consisting of 10 ORFs (i.e., ORF1' through ORF10'). ORFs of LOL2 are indicated relative to nucleotide numbers annotated to SEQ ID NO: 16; mRNA sequences of each gene are given by joined exons determined by cDNA sequencing or predicted by the fgenesh (*Neurospora*) gene prediction program at "Softberry", <http://www.softberry.com/berry.phtml?topic=gfind>; gene orientations are indicated by "+" (forward strand) and "-" (reverse strand).

ORF1' of LOL2 is lolE: +strand, join 15210–15946, 16026–16057 (predicted by fgenesh at Softberry).

ORF2' of LOL2 is lolT: –strand, join 14753–14666, 14588–13997, 13920–13206 (predicted by fgenesh at Softberry).

ORF3' of LOL2 is lolP: +strand, join 11163–11257, 11551–11762, 11836–11925, 12000–12541 (predicted by fgenesh at Softberry).

## 23

ORF4' of LOL2 is lolU: -strand, join 10438-9597, 9531-8916 (predicted by fgenesh at Softberry).

ORF5' of LOL2 is lolA: +strand, join 8006-8534, 8603-8706 (predicted by sequencing of lolA cDNA).

ORF6' of LOL2 is lolO: -strand, join 7190-6999, 6907-6011 (predicted by fgenesh at Softberry).

ORF7' of LOL2 is lolD: +strand, join 3867-3993, 4103-4525, 4616-5026, 5118-5143 (predicted by fgenesh at Softberry).

ORF8' of LOL2 is lolC: +strand, join 873-970, 1033-1084, 1167-1250, 1334-1693, 1782-2335, 2406-2679 (predicted by sequencing of lolC cDNA).

It also appears that LOL2 may include lolF2, an allele of lolF, and lolM, probably linked to the 5' end of LOL2 (SEQ ID NO: 16). The ORFs of lolF2 and lolM are indicated relative to nucleotide numbers annotated to sequence of SEQ ID NO: 17; mRNA sequences of each gene are given by joined exons predicted by the fgenesh (*Neurospora*) gene prediction program at "Softberry", <http://www.softberry.com/berry.phtml?topic=gfind>; gene orientations are indicated by "+" (forward strand) and "-" (reverse strand).

ORF9' is lolF2: -strand, join 5804-4342, 4281-4207, 3905-3821 (predicted by fgenesh at Softberry).

ORF10' is lolM: -strand, join 1689-1525, 1430-1332, 1231-1174, 1085-1021 (predicted by fgenesh at Softberry).

## EXAMPLE 7

## Functional Assignment of the Loline Alkaloid Gene Clusters

Most of the predicted gene products show highly significant BLAST matches (E le-7) with known biosynthetic enzymes and motifs. The closest BLAST matches and/or motifs of the ten genes follow in the order that they occur in the clusters: lolE gave a match to epoxidases; lolT and lolT2 matched the diagnostic domain of  $\alpha$ -type pyridoxal phosphate (PLP)-associated enzymes, including class-v aminotransferases; lolP matched cytochromes P450, with closest relationship to pisatin demethylase from *Nectria haematococca*; lolU gave no significant match or diagnostic motif; lolA closely matched the Asp kinase allosteric amino acid binding domain; lolO matched nonheme-Fe oxidoreductases, especially isopenicillin N synthase; lolD matched ornithine decarboxylase (an  $\alpha$ -type PLP enzyme); lolC appeared to be a  $\gamma$ -type PLP enzyme; lolF and lolF2 appeared to encode an FAD-containing monooxygenase with closest match to cyclohexanone oxidase; lolM had no significant BLAST match or motif.

## EXAMPLE 8

## Hybridizable Variants

The nucleic acids of the present invention comprise at least a nucleotide sequence of all or part of SEQ ID NO: 15 or SEQ ID NO: 16 or variants thereof. It also appears that SEQ ID NO: 17 or variants thereof may be part of the LOL2 gene cluster linked to the 5' end of SEQ ID NO: 16, and therefore, nucleic acid sequences that hybridize to all or part of SEQ ID NO: 17 are also encompassed by the present invention. Variants of the present invention encode isolated nucleic acids that at least hybridize to all or part of SEQ ID NO. 15 or SEQ ID NO. 16 or the complements thereof under hybridization conditions of, at, or between, low and high stringency conditions, and have insecticidal activity. Low stringency conditions are generally about 3 $\times$ SSC at about 45 $^{\circ}$  C. to about 65 $^{\circ}$  C., and high stringency conditions are generally about 0.1 $\times$ SSC, 0.1% SDS at about 65 $^{\circ}$  to 68 $^{\circ}$  C.

## 24

Preferably, the hybridization conditions are highly stringent at 0.1 $\times$ SSC, 0.1% SDS at 65 $^{\circ}$  C. Variants are made by methods known to one of ordinary skill in the art and as set forth in Maniatis et al. *Molecular Cloning: A Laboratory Manual* (Current Edition). Preferably, the hybridized nucleic acids code for a polypeptide that has one or more or all of the physical and/or biological properties of loline alkaloids, such as insecticidal activity and feeding deterrent properties.

## EXAMPLE 9

## Host-Vector System

Identification and cloning of the loline alkaloid gene clusters is useful for the development of a host-vector system for the efficient recombination production of both novel and known alkaloids. The coding sequences which collectively encode a loline-type alkaloid gene cluster, including variants, hybrids, mutants, analogs or derivatives of the loline alkaloid gene cluster, can be inserted into one or more expression vectors, using methods known to those of skill in the art. The replacement gene cluster need not correspond to the complete native loline alkaloid gene cluster, but need only encode a functional gene cluster to catalyze production of an alkaloid.

The recombinant vector(s) of the present invention includes replacement gene clusters derived from a single gene cluster, or may comprise hybrid replacement gene clusters with, e.g., a gene of one cluster replaced by the corresponding gene from another gene cluster. For example, the oxidoreductase of LOL1 may be replaced with the oxidoreductase of LOL2 without an effect on the product structure. Accordingly, these genes may be freely interchangeable in the constructs described herein. Thus, the replacement clusters of the present invention can be derived from any combination of alkaloid gene sets, which ultimately function to produce an identifiable alkaloid.

Expression vectors also include control sequences operably linked to the desired alkaloid coding sequence. Suitable expression systems for use with the present invention include systems, which function in eucaryotic and procaryotic host cells. However, procaryotic systems are preferred, and in particular, systems compatible with *Neotryphodium*, *Epichloë*, *Adenocarpus* and *Argyrea mollis* species are of particular interest. Control elements for use in such systems include promoters, optionally containing operator sequences, and ribosome binding sites. Particularly useful promoters include control sequences derived from alkaloid gene clusters. However, other bacterial promoters, such as those derived from sugar metabolizing enzymes, such as galactose, lactose (lac) and maltose, will also find use in the present constructs. Additional examples include promoter sequences derived from biosynthetic enzymes such as tryptophan (trp), the beta-lactamase (bla) promoter system, bacteriophage lambda PL, and T5. In addition, synthetic promoters, such as the tac promoter, which do not occur in nature also function in bacterial host cells.

Other regulatory sequences may also be desirable which allow for regulation of expression of the replacement gene cluster relative to the growth of the host cell. Regulatory sequences are known to those of skill in the art, and examples include those which cause the expression of a gene to be turned on or off in response to a chemical or physical stimulus, including the presence of a regulatory compound. Other types of regulatory elements may also be present in the vector, for example, enhancer sequences.

Selectable markers can also be included in the recombinant expression vectors. A variety of markers are known

25

which are useful in selecting for transformed cell lines and generally comprise a gene whose expression confers a selectable phenotype on transformed cells when the cells are grown in an appropriate selective medium. Such markers include, for example, genes which confer antibiotic resistance or sensitivity to the plasmid.

The various subunits of gene clusters of interest can be cloned into one or more recombinant vectors as individual cassettes, with separate control elements, or under the control of, e.g., a single promoter. These subunits can include flanking restriction sites to allow for the easy deletion and insertion of other subunits so that hybrid gene clusters can be generated. The design of such unique restriction sites is known to those of skill in the art and can be accomplished using the techniques described above, such as site-directed mutagenesis and PCR.

Further, the vectors, which collectively encode a replacement gene cluster can be inserted in to one or more host cell, using methods known to those of skill in the art. As such, the present invention also provides host cells which have their naturally occurring gene substantially deleted, transformed with vectors encoding a replacement gene cluster or parts thereof, for the production of active alkaloids. The invention provides for the production of significant quantities of product at an appropriate stage of the growth cycle. The alkaloids so produced can be used as insecticidal and feeding-deterrent agents to protect plants. The ability to recombinantly produce alkaloids also provides a powerful tool for characterizing biosynthetic enzymes and the mechanism of their actions.

More particularly, host cells for the recombinant production of the subject alkaloids can be derived from any

26

organism with the capability of harboring a recombinant gene cluster. Thus, the genetically engineered host cells of the present invention can be derived from either procaryotic or eucaryotic organisms. Preferably, the host may be *E. coli*. However, more preferred host cells are those constructed from the *Neotyphodium* species, among others, will provide convenient host cells for the subject invention.

The above-described host cells are genetically engineered by deleting the naturally occurring loline alkaloid genes or genes encoding tailoring enzymes therefrom, using standard techniques, such as by homologous or heterologous recombination. One or more recombinant vector, collectively encoding a replacement gene cluster of the present invention, is then introduced into a host cell. The vector(s) can include native or hybrid combinations of loline alkaloid gene cluster subunits, or mutants, analogs, or derivatives thereof. Methods for introducing the recombinant vectors of the present invention into suitable host cells are known to those of skill in the art and typically include the use of  $\text{CaCl}_2$  or other agents, such as divalent cations and DMSO. DNA can also be introduced into bacterial cells by electroporation. Once the genes or gene clusters are expressed, the alkaloid producing colonies can be identified and isolated using known techniques. The produced alkaloids can then be further characterized, e.g. by NMR and mass spectroscopy.

Although illustrative embodiments of the present invention have been described in detail, it is to be understood that the present invention is not limited to those precise embodiments, and that various changes and modifications can be effected therein by one skilled in the art without departing from the scope and spirit of the invention as defined by the appended claims.

---

 SEQUENCE LISTING

<160> NUMBER OF SEQ ID NOS: 17

<210> SEQ ID NO 1  
 <211> LENGTH: 23  
 <212> TYPE: DNA  
 <213> ORGANISM: Unknown  
 <220> FEATURE:  
 <223> OTHER INFORMATION: Artificial primer sequence

<400> SEQUENCE: 1

g tt gat ct cc a ag at cc g t g ag g 23

<210> SEQ ID NO 2  
 <211> LENGTH: 20  
 <212> TYPE: DNA  
 <213> ORGANISM: Unknown  
 <220> FEATURE:  
 <223> OTHER INFORMATION: Artificial primer sequence

<400> SEQUENCE: 2

g t t t c g t c c g a g t t t c t c g a c 20

<210> SEQ ID NO 3  
 <211> LENGTH: 23  
 <212> TYPE: DNA  
 <213> ORGANISM: Unknown  
 <220> FEATURE:  
 <223> OTHER INFORMATION: Artificial primer sequence

<400> SEQUENCE: 3

-continued

---

gtctggcgaa ttctacagac acg	23
<210> SEQ ID NO 4 <211> LENGTH: 21 <212> TYPE: DNA <213> ORGANISM: Unknown <220> FEATURE: <223> OTHER INFORMATION: Artificial primer sequence <400> SEQUENCE: 4	
gatggccatg tgaggaaaga g	21
<210> SEQ ID NO 5 <211> LENGTH: 24 <212> TYPE: DNA <213> ORGANISM: Unknown <220> FEATURE: <223> OTHER INFORMATION: Artificial primer sequence <400> SEQUENCE: 5	
cggtgcgct cttctaaact tgac	24
<210> SEQ ID NO 6 <211> LENGTH: 25 <212> TYPE: DNA <213> ORGANISM: Unknown <220> FEATURE: <223> OTHER INFORMATION: Artificial primer sequence <400> SEQUENCE: 6	
gaatctttcc gatgcaaggc ttacg	25
<210> SEQ ID NO 7 <211> LENGTH: 23 <212> TYPE: DNA <213> ORGANISM: Unknown <220> FEATURE: <223> OTHER INFORMATION: Artificial primer sequence <400> SEQUENCE: 7	
ggtctagtat tacgttgccca ggg	23
<210> SEQ ID NO 8 <211> LENGTH: 22 <212> TYPE: DNA <213> ORGANISM: Unknown <220> FEATURE: <223> OTHER INFORMATION: Artificial primer sequence <400> SEQUENCE: 8	
gttgccacg gtgcgctct tc	22
<210> SEQ ID NO 9 <211> LENGTH: 20 <212> TYPE: DNA <213> ORGANISM: Unknown <220> FEATURE: <223> OTHER INFORMATION: Artificial primer sequence <400> SEQUENCE: 9	
tggtaacca gctcagcacc	20
<210> SEQ ID NO 10 <211> LENGTH: 20 <212> TYPE: DNA <213> ORGANISM: Unknown	

-continued

---

```

<220> FEATURE:
<223> OTHER INFORMATION: Artificial primer sequence

<400> SEQUENCE: 10

gagaaaatgc gtgagattgt                20

<210> SEQ ID NO 11
<211> LENGTH: 18
<212> TYPE: DNA
<213> ORGANISM: Unknown
<220> FEATURE:
<223> OTHER INFORMATION: Artificial primer sequence

<400> SEQUENCE: 11

tccgagatct ggacgagc                18

<210> SEQ ID NO 12
<211> LENGTH: 20
<212> TYPE: DNA
<213> ORGANISM: Unknown
<220> FEATURE:
<223> OTHER INFORMATION: Artificial primer sequence

<400> SEQUENCE: 12

taatacgact cactataggg                20

<210> SEQ ID NO 13
<211> LENGTH: 17
<212> TYPE: DNA
<213> ORGANISM: Unknown
<220> FEATURE:
<223> OTHER INFORMATION: Artificial primer sequence

<400> SEQUENCE: 13

caggaaacag ctatgac                  17

<210> SEQ ID NO 14
<211> LENGTH: 16
<212> TYPE: DNA
<213> ORGANISM: Unknown
<220> FEATURE:
<223> OTHER INFORMATION: Artificial primer sequence

<400> SEQUENCE: 14

gtaaaacgac ggccag                   16

<210> SEQ ID NO 15
<211> LENGTH: 25346
<212> TYPE: DNA
<213> ORGANISM: Neotyphodium uncinatum

<400> SEQUENCE: 15

atatttatat taaatagtgc ttattatcta gattaaataa tcctatacta tttatctaata 60
agttttatta ctaatattag ggtatatagc tatacttttt cttaggaggt tttactatat 120
taatttcctt tcttacttag gctataaacta taatttttag tttagtaagt tactttatta 180
gattatttat ttaattatag tattttacta aattaggagc tatctactac cctagactag 240
tgtaaataa aatatttttt ctattcctaac taggtaaatt actaaatatt atctaatttc 300
tctaagtagc ttagtaacta ttaaaggtag cttaattaaa tagtgcctat atcttaaagc 360
taaatctac cttatctaaa gtaatttttc ctaagttaaa gaagtttagga tccctattct 420
taagctctaa ctatatataa atatatatgt taagtgctat ctaaagctat ttatattata 480

```



-continued

---

atactagaat tttctcttaa gtaaaccctt ttttaattat aaagccttaag attaaatact	540
taggaagtgc tttataaata taattagact aggttatagt agttctctat tctattaggt	600
tagccttaga taataaagta taatacttct atagctagta ataggtttcc ttaattat	660
ttagttatat aaaattaag tctttaagtt atcccctagt gttttctatt taaccctaat	720
tagtaatatt aaactaaagg agtatcttat ccttagactc attttaagtt tataatatag	780
ttagtatttt aactacttat taaagcttta agttaatata ttacttaagt atcttacct	840
agtttaactt aggtatacct attaccttta tctttacttt aaaatcttta ataaagttag	900
taataattat ccctataaac tactaaatat tgatttttta aattttttta ggggttatta	960
gttatagcca atgcactcaa taaaataaga taataataat tactagcaat acctagctag	1020
tataataatt aacttataac taatcttaac tatagtaata aataaaacc taatagaac	1080
aaagccttaag gtataaata tagggggggc tataaggtta gattaaagtt tgtaataaac	1140
tttatagcta cgtagcgca agatatagtc atagttcgcg accgcagca aactcaaatt	1200
cgttcgataa actactaaat attataccta ttttatatag taataaggga tatctaatac	1260
actattatct ctctaagaag ctttataaag gtctttatat taaggccctt aagggttata	1320
ggtatagtct ttctattatt aggatctttt cctaagtagt ttttaaatta ggttttact	1380
aaactagtaa ctattttaga attaattaat ttctaactag gaactagagt actaggtaat	1440
agaaatctct agagatcctt taggtaactt agctacttac taggccttac tttacttagt	1500
tattttaaatt aaaataaggt aagggttaatt atagaattag ctaagagtgc ttttaattaa	1560
tctattagaa agtaatagc ttaactaaat atctaaatac ttataagact ttactaaaa	1620
agggttttta gtagtgtaat atttatagtt ataagtaagc tataagtaaa ggctattgat	1680
ttttttaaatt tttttggggg ttattagtta tagctaagc atctaaataa ataagatac	1740
tataattact agtaatacct agctagtata ataattaact tataactaat cttaactata	1800
gtaataaata aaaccctaat agaaataagc ttttaaggtta taaatatagg gggggctata	1860
aggttagatt aaagtttgta ataaagtttg tggctgcgtt agcgcaagat atagtcatag	1920
tttgcgaccg tagttaaact caaatcgtt cgagttttta agtaaaggct ataagtataa	1980
ttatatagct ctttataata agctataaga ttctaactact tagctaaata actataaaat	2040
taataataag tcttaagatt aaatagttta taacactagg tagcgcttcc tatcttaggt	2100
tcttatatct agagatctct agtaaggggt taatagctta gctagtgttt atagaatata	2160
ccttaggatt agttactatc ttcctctata gttttatata atataatttc ctcttcttaa	2220
tctatcttaa ctctctaagc cttagctagc ttatattaat actatagcct cctttaggta	2280
taagcctagg ctattaatct atattatact atagggaaaa taaaataaag gggttttata	2340
taaaatagct tagtaatagc taaagaatct agctagaact acccttctaa ttaatcttag	2400
ctagaagtaa gtttaattaga gagtctaagg tccttagggg tttaaaacct atttctctac	2460
tagttttatt aagtaaaaaa taataoccta aaagacataa tactagccta tagttatagg	2520
tagtaatagc atttacttac actaaagggg ttaattaact taatagtagc aattataata	2580
atagctaaat ctatctctat atatagggat agatttagatt agattaaata atctattaga	2640
ttagaaatgc ctttttaatt aaatcagggg aaaatagtct tattaattta tcttattaaa	2700
gtaaatataa tagtagctat agtaacacta ggccttaag tcaaaaatct agagttagtt	2760
atatataatt tatactaaag aaatctagct ataggtagtc cctttataga ttaataatc	2820
cccttatcta gataactaat atcgttatcc cttaatgtgt tatccattcc ttaaatccct	2880

-continued

---

agtgcctatc atcacgatcg cgtgttttgt gggcgcgcgt atcatagcac acagtacttc	2940
ttctagattt ggactaacgt ggtatgcgca tttagtggcc ctaggacgta tggtgccgga	3000
ctgtttagg ctatccgtcc tagcctaacc tatctaggca ttggtctagc aacaggctta	3060
cgggggctag ctaagatgta gatatgtaca agatgctatc aaactgctat tgtgtttgcc	3120
gagaaggta ctagcagatg ccaccgacgg aaacgatgcc cttttcttc tggcacagaa	3180
tcagagacgt attgggtggt tgtcaatacc agagtctgat cagtggaaca tggaaaatcg	3240
gggggacaaa atctgcctag cgtcatcca aaaaaaaaa aaccaattgc tacttgctgc	3300
tagacctgaa gagtgtatcg actcgatata cgacagaaag tggcttcaca gaagaccgt	3360
ctcctctaca tgccacgctt gaaaccctc caggttgttg gccagacagt tttccagctc	3420
ccgacgatac agaatacaacc ccccaacct gatcagtttg ttagagcagt ccacagaaca	3480
aagcgacaag agccctgtg caacctacca agttttctct tccttgtag cctcagctgt	3540
tttcttgctt ttgctgcat gtgtatgga gagtgccttg tcccaaagta ggctcatctt	3600
cctctccac tggcagtggt atttggaagt cgcctcagat tgacaaatgc ccgctgttg	3660
gcaccttgcg atgatttgc acaaccactc tacctgaacg gtgatgaccg cgggggagtt	3720
gaccagaagt gtagggcact ggggtccata gaggatgacc atgttgggga atgaatgaat	3780
ggccattccg agatgcgact cgacaccatc ggaccaggca tcttctaaac ggatgccatt	3840
ccggcctctg atatgaagac tcctgagccc gcttgctcg tcgccaacc cggtggaag	3900
aattatggct tcgcattcaa ctgtctgccc atgaacgcgg atacctgtct ctgtaattaa	3960
ctcgatttgc tggttgtgta tgtcaataac cttcacatgg ggttggcca taacctcgta	4020
aaagctctct tccaaacagg gtcgcttgat accaaaggca aaagatgga tttgaggcac	4080
caggagctcc cgtttggcca catcgtgat tctagctcgc gtccgccgag ccagaaatc	4140
atacgcatcc cgtttggctt ggatgttctg gcacagatcc cggaaaccag ccattccagaa	4200
agcccagcct cccgccagat agcgttgttg ataaaaatgg tttcgtcct ctattgggac	4260
atccaacgty tcctggtcac ggggcacgta gccgaaaccg tttgaagtct gcagtccaag	4320
tcgtaggget tctctgtggt cgtcgggtct catgcaaagt gccgttgccg tctggctcgg	4380
gctgccgtat ttgctgtag tgaggcatgg agactgctgg aatatcgtca tggccttggc	4440
tatcttacc acagattgga tgatctgaac tccgcttggc cccgttccaa tgacagccac	4500
cctcttaccg cgcatactga cagcgtcatg aggccatttt gcggtgtggt agatgggacc	4560
gcggaatcga gacattcctg gaatcctggg gatgttgaga acggacgaaa accctacagc	4620
tggaatgaac catcgcgcct cggctcttct gccatcttct aaagagacgg tccatctctg	4680
ggtagtcttct gagtaccggg ccgcggaaac cgaaacgcca aactcaaac tagcagagat	4740
ttccatcgc ttgtccacgt ggtcaaaata tctcagatc tctgcacggg tgggaaattg	4800
ctctaccat tcccaatctt ggagaagctc cgcacatag aactggtaga agggaaacag	4860
gctgtcgact gctgtcccc gataagcgtt ctcgcgccag acacctcaa gacgttctctg	4920
gcgctcaaac ccttggactc gaaatccgag ctttcgtagt ctttagtcat agttcagctc	4980
tacctctcta ctctattcgt gtcttggatg gcaacgtaga ctctcacctg tagacagcga	5040
gaatacctga aaaaccagcg ccaacgacga ttactgcaa attggtcaat gtcatttag	5100
tgaaatgaag aagaattaa taatcatatg cagaatagaa gcaaattttg gtgtatcaga	5160
aatgtcatca aaggctaaca gctccgggga cagaaaagct tgatcgaggc tgcaatttac	5220

-continued

---

tgagaggcgt aagggactga tactaagacg gtcgattatc tgtgtgagag tggtcagaat	5280
gggtaactgc gcatttggat agcccagttt gggaggggga gtatagtcgt acacatggat	5340
tcgcaatttg ggaatgaagc gttaagtctg ttatgggtata atagggtcac taaatgcaca	5400
taacgcgcta gtcctaatacc ggattaacga tccatgcacc ttatgcctat atgtgtcata	5460
tttaaaggta ttgatattat taaagctatt acaattacca ctatactagt attaacttaa	5520
gtaattaact ctctattata tacgccttaa ataattacta ctaaataaat tcaaccacta	5580
taaatccggt acttactaag tattaatagc actgattata tcttttatag ttatatacaa	5640
tatctttatc ttaataaatg acataataaa gggcacttaa aaagagcctt attatattat	5700
attgcgttgc attgcattgc gttacattat attagaaggc tttttacaat aagcattata	5760
gtaagccact tgcattttat actagctctc taatatactt agcaagggat taagtaaaca	5820
tgtacttttt ttgttttagg actaacgcgg tatgctgatt tagtgaccgc gtataatagg	5880
gcataggaga ggcgtgagtg ggggtttcac tcaactcctg tcacgtcact tctcacaag	5940
gagagggagc gtggctattc ggacctgcgt tttcttgctt actagagctg tgcctaccac	6000
gtaatagggc cacatcccac atcccacgcc cggccactaa attatttga tagcaactccc	6060
tagcaataaa aatagtcaga attacagtac acccctgagt tattttacag atctacataa	6120
caggggggat tgagcgaatt aagtctagc aaagaaataa gggagatagg ggctaggatt	6180
agcaagtacc tagattcctt tatactttat atagaaaatt atatctctt tagtagtgct	6240
atatatgcta tatattttcc ttatagctct ctaaaataat ataggggttc tagtgactt	6300
atagctaatt atagctatta gagaggaacg aaaaactagg gcatgtagat ttgtaaaatg	6360
aatgtgtaca ggctgtcgg ccccgccgcg cgcaataggt aatagctgta ctacgcccg	6420
agtggccacc cacttatcat gccacgcccc acttcttttg gttcgcgtgc cacttcagt	6480
gttattactc cgtattcata agcttgacaa acacacatcc gcgacaacgg tctcctcatc	6540
tgacgggccc cataccataa tgcttgctgc agctcattga taatatacct ggcctaagat	6600
agacacgacc gaccggctg agtcatcggc tttgcctggc cctccgctat tttgagagac	6660
aagatcggcc tgggtgactac aatttgctac caagacagat tcgctgaata tccgcaagca	6720
agcaagctgc atcatcaaaa cataaataac gaccaagaa tacacggagt agaagaaagg	6780
aaggaccaga acaagttggc gatthtccaa cttggttact caccacaagc gtcactctgt	6840
tcatatcatt actcgccttc cagtgtcttg cccacctgt ttcaatattg tcgtcgagca	6900
aaatgacagt agatacgatt acttcgactt ctaacgggaa ccaagatggt ccaaaggagt	6960
tcttcccaaa agaattcgaa actcagcttc tccatggttg gtaggttatc ggcctcata	7020
tgacggtcct ctatcccaga actaatcagt ttgctgattca agccggttcc cggacatttt	7080
aggcagttgc gcggtgcctg tatacagttc ggcaagtaaga tcaagccacc gcctcctcga	7140
aaccaccaa ctatgcaca tgtaactgaat tcttttcct ttttgcgcat cttgataggc	7200
ctttgagttc aacagcgttg cccacggtgc gogtcttcta aacttgaocg agttcggcaa	7260
catctacagc cgettcacca atggtttgtct ctttctcctt ctccctcatg actgcttttt	7320
taacgaggac acaagctaataaaaacaaac catccttcaa cagcccaccg tcaatgtatt	7380
gcaaaatcga ctggccgggc tggaaggagg cgtcgtctgt tgtgccgtcg catccggctc	7440
tgccggcgta gtcgtgacgg taatggccct cgcaaggcgtt ggcgacaact tcgtctcatc	7500
ctttcagctt catgctggca ctttccacca gttcgagagt tttagccaagc agatgggcat	7560
cgagtggccg tttgtgaagt ctcgagaccc tgcagacttt gcggcgccca tcgacgacaa	7620

-continued

---

gaccaagttc	gtctggcttg	agaccatcag	caaccctggc	aacgtaatac	tagacctga	7680
ggcagtcctcg	atggtctgcc	acaccaaggg	cattcctttg	attgtagta	tcccaatgaa	7740
aactgtccgt	cccatagggg	gggttggggc	taaaattcgg	gggatgtgg	ttcccatcca	7800
agatthtagt	gcgataaac	ctttggctgt	gccgggtact	tttgcgtcc	catcaaccac	7860
ggcgtcgata	tcgtcgttca	ctcggccacc	aagtggatcg	gcggccacgg	cactacggta	7920
ggcgggtgca	tcgtcgacgg	cggtaacctt	gactggggcc	agcaccggga	tcggttcccc	7980
cagttccatg	atccacggac	gcgactctgg	gaacgctttt	cccgtcgggc	gtttgcgtgc	8040
cgctgccagt	ttgagatcct	gcgcgatacg	gggagcacc	tcagcgtcc	tcgggcccag	8100
cagctgctgg	ttggcctcga	atcccttgcc	gtgcgctgcg	agcggccacgc	gcagaatgcg	8160
gccaaagattg	ccgactggct	gcgtgagcat	cccctcgtgg	cctgggtcag	ctatgttgg	8220
caccggaacc	accccgatca	ccaggggagcg	ctcaagtacc	tcaagcgagg	ctttggctcg	8280
gtcatctgct	ttggctctacg	gggggggtt	cgaagcaggt	gccctgttct	gcgatgcgtt	8340
gaagatggtc	atcaccacta	ccaagtgcgt	aattaaacta	gcccttctt	ctcccagag	8400
agcatcgttc	tgccattcta	acctcgtttt	gcagcctggg	ggatgccaag	accctgatcc	8460
tccatcccgc	ctcgactact	catgagcact	tcagtccga	gcctcgagct	gaggctggcg	8520
tcacagatga	tatgatcagg	ctgtctgtgg	gtattgagca	gatcaaggat	atcaaggccg	8580
acttcgagca	ggcctttgag	caagtgttc	gggtaagaa	gagcttctg	aagccttgca	8640
tcggaaagat	tctcttgacg	gatgagatca	atgaagactt	atgtggacct	tcagcttgtc	8700
gtgacgtaaa	taggggtcat	tcgagggcat	ggtaaatgtt	ctaccagaag	tggcatggaa	8760
gtatthttcca	atagacctgt	aattcacggt	tgctacgttt	tttcatactt	accatgcgga	8820
tttattttga	taatatttct	ttaagtgtgc	agaactcgt	gtcacttaca	aagctaattg	8880
ccgtaattaa	tctttagtgc	gccatgtcct	cttgactatc	ttgtaaacga	aggggcatta	8940
ggcgtgcttt	gctttgtctc	tcctcgtgtt	tttaagtttt	gctatattaa	cttgaatatt	9000
attactaact	agatgctagg	ctttttacta	tttacaaca	cctgtaacaa	tcagcgcggc	9060
gtaggcaac	tcagagagatt	atthttactat	agtagact	ataatgcat	actttaatta	9120
atcttcagta	cgctatgttt	ttttcactat	cttgtacaga	ttaacaaag	ggcattagg	9180
catgtgttgg	gagcataaa	gcaaagaggt	cagagacagg	acaaccgtat	agtgaatcct	9240
tggatgacta	agcgtagttg	cctagctagt	agatctcctt	aagcgtgcta	cagcttgta	9300
agtcacgtta	gctagagtct	atatctaatt	agataaaagt	acattaaaat	agtatatata	9360
tttatatgta	aattagctaa	taatcgttat	actagtaatt	ttctatagta	tagattacta	9420
tattacactc	attaattatc	ttagataagt	agtagtact	tacgggtta	ttaaccttat	9480
agcagggggg	gctgacgtaa	gtagcttag	gagtataagg	gggctgtaag	ggataatcct	9540
ttctctctc	ctccagtttc	ttaactact	atcgacgcc	tatcgagtc	gcctaggggc	9600
tagtctataa	caggagggta	gagtttgaga	catttacgca	caaacctaat	ataggtagcc	9660
ttgttattag	taacaagaa	tcttagctat	tactcgtttt	taacaaacca	ggcattagg	9720
cacggcagca	tgctccactt	agtctctccc	agtgttttag	agttatacta	tgttattaca	9780
taaaatacat	atactattat	tttaaagtaa	actttcacat	tttaaaactt	attatgttaa	9840
aagtggataa	ttcatgcata	tattaacttg	aatactatta	cttactactc	gatactaggc	9900
ttttactat	ttacaaacac	ccataatag	cggcgtggcg	tgaggcaatt	gaggagacag	9960

-continued

---

tctcacaata	gcagggagca	tatcacattc	atztatagta	cagatgccga	gccaaatgcc	10020
gtgcgtgac	gaaacggtga	gccaaagcgc	agcacaccat	caagatgcgg	ctgtaatctc	10080
ggttgctact	tggaagcact	tggaagcact	cgtgcataac	gcaagtcgct	ctctcataca	10140
tggctttcag	agtttatgag	ggactagaac	agacaagtct	ggctttttga	caaggaagta	10200
gctggacaag	gttcgcaggc	gctctgaccg	agcataaacc	aatattggag	actggagact	10260
ctgccatgtc	ttcaataggc	ccttatgtag	ccttgcttgt	gtgtgtactt	gcagggatgt	10320
ttataaatat	gtgatgttc	gagtatcttg	ttcggttttg	taaactcaaa	ctcgccagct	10380
ctcagcctgt	cagccgagtg	aattgctatt	gccattgtat	tactccagaa	cacgtatctt	10440
gcacaaactc	caatctcagc	aatggccacc	gtcgtacgag	aagcatttga	gaaccatgtc	10500
aagctggctg	agagtcgaa	ctcgcccggc	catgtgcttg	cttctcttga	ggcctccttc	10560
ttgttgccg	acttgaacga	cattgttctg	aagtggcgg	cgtggaagaa	agctctcccg	10620
gatgtcacc	cttttttttg	tacgtcctca	attcccccca	tttcatgtct	cactaagctg	10680
ggaagtcccg	tccgagggtc	cgaatcaatt	gacttgagg	cagccgtgaa	aagcagctac	10740
gatcgacggc	tgatccagac	tctggccacc	tgtggagccg	gatttgactg	tgctcggtg	10800
gaggagattg	agttgatcct	ctccttgggc	attggcgcag	aacgaatcgt	cttcaactcat	10860
ccgtgcaagc	ccgtctctcc	tcgggctttg	ccgcaagctt	gggatcacgc	tcataccttt	10920
tgacacgaat	gcgaagctcg	taagctcacc	atcactatcc	cgaggctcag	accgtcctcc	10980
gcgtcttcgc	cgacgacca	accaatgcg	atcctttggg	taccaagttt	ggcgccgcgc	11040
gggaggacat	tgatggactc	gtgcgtcttg	tcaaggagtt	gaacatgaag	ctggccggcg	11100
ccagctttca	tgacggctcg	tctcgtcttc	ggtacctcgg	ccggtgaaat	gcatgcagct	11160
cgctaacggc	ggcaattcca	cgccctgttc	tagcccctag	cgctcgtgtc	gacgcagctg	11220
catacgtgcg	gggcatccgg	gacgcagccg	aggtcttcgc	gcgggcccga	cgggctcgggt	11280
tgaaccctac	ggtgctggat	attggcggcg	gctacacaga	ctcgacgttt	caacagattg	11340
caggggcggt	cagggccggc	atcgccgagt	gcttcaagtc	gcaagtggtc	gagggacgcc	11400
ttcgcacctc	tgccgagccg	gggactctct	tctcctgcag	cccgttctat	ctagcagtca	11460
aggttgctgc	gcggaggag	aacgcgcgtg	cgtttgggaa	tgagccagcc	acgcgtctct	11520
acatcaacga	cgcatctac	agcaacttca	tgatgcgttt	catcgtcaac	atgaccttct	11580
cgcccgctgc	cgatcatccg	aagggggtgt	ggtacgatca	gacggagcaa	acgatgcgcc	11640
gcgagcgctg	ctctcttttg	ggccggagct	gtgactccaa	cgactgcatc	aacagggatt	11700
gccggctcga	tccggaagt	gggctcggg	actggcttgt	cttcaaagac	atgggtggtg	11760
agcgtctcaa	cttttcccc	cttttctctt	togtttttg	gtccctgtgg	agaatagcat	11820
atgtaggagc	taaccatgca	tgggtggcag	cctacacaac	ggtatgtaac	accaccttca	11880
atggcttca	cagttccaat	cacacaatct	acattgaacc	cacccaagtc	gacaaaagccc	11940
agtgacactt	tgaacagttg	gagttggcca	tctgagtgcc	agttcgggga	gacccacacg	12000
cggcacgtgc	cgtcccgggt	tcccgggcgt	ggctgcatga	cgctagacgc	gctagtctag	12060
tacctactcc	gttccgtact	gtccttgtag	cagtccgtag	tcacaacaga	tggcttggat	12120
caattgatgc	acactccctg	attagcttgt	ttgacacatt	ccatttggct	tcgtgcacat	12180
catgatata	ccagtacatg	tttctccag	tccttttgta	catggccacg	ccgagctctt	12240
gtaagtacct	cgtcgagctt	ggtcttctg	caccaagtta	tgtacagtgg	gggtgcagat	12300
gtaaggtgca	gatgtaagga	taaccacaaa	aattagctct	gttaggcaaa	atgaccttat	12360

-continued

---

aatttaaata	aatagctaaa	taaaatatat	aatatataat	tatactaaga	agttatttct	12420
cttttaccta	tattacttaa	aactttatat	taaacccttt	agcgtgtgaa	ataaattaag	12480
ttaaacctaa	gataaaatcc	ttcattatcc	tcacatctgc	acccccactc	taggtgccgc	12540
gctcccggag	aaggggtcca	ccccagtc	ccccgagaac	ggtaaaaatg	acgacatatg	12600
gcggaacccc	cttctcttag	cgacaatcgc	aatgagacgg	acaaggtaca	acgacctgag	12660
ttcttgaccg	actggcataa	gtgctcatga	ttgaatacta	ggtagcagac	tgtacggact	12720
tagttcggtg	tttcagtgc	aatcacttca	ctactacaag	cctcaggcct	ccgtcgcctc	12780
ctacatgacc	gttgctgctg	tcttgcgctc	atactcaaga	gcaactcggc	gggccagcca	12840
ctgccctgcc	gtcatccggt	ccttcoactc	gagcgtgctc	cactttcctt	gcttctcgca	12900
gccaggcaga	ggttcgatca	tctcgtccag	attcaagtgt	ccgaagaaga	cgagcgagta	12960
gcgctgcacc	agctcgtcat	cgtaaccggc	acttccttcg	tacatgtacc	ggctcggcgc	13020
cgtagcgcgg	tggagggcgc	tccgccatct	gccgttggtc	tgcttctcaa	gcaggtcccc	13080
aactgaaaca	atcatagccc	ccttgatcgg	aggcacaggt	cggtaaatgt	cttctctgta	13140
gtcgtgcagc	tcaagcccc	cgaccatgtc	ctggaagagc	atggtgaact	ggcagtagtc	13200
cgtagcgcg	ttgagccggt	tcgcggatcc	gctggccagc	tgtgaaacgg	gctgccccag	13260
gaagtagttc	caagttgagt	gggtgctcat	gtggcgcggc	tcaaaacttt	ttccaatgta	13320
atccagatcc	tccatcccga	ggatttcgca	cacgagccgc	atgttctgga	gagattgctt	13380
gtagcaggcc	gcgaaccact	tcttcaagaa	gtcgagaaag	cccgggagat	gctgctccac	13440
caagtttaga	tcggggggc	ccgggggta	cgttccgcaa	gggtcctgca	gctccatggc	13500
ctctttgagc	tccgtcggcg	tctccttgcg	gagcctctcg	atctcgtcgg	gatcccagac	13560
gccctgcgag	gagatggcct	cgctgtgccc	cgccagccc	tggaaatgct	ttgatacgtc	13620
aggtgggatg	tgaaccgagt	tcttgaccgc	cagaggcagg	tcaaaaaact	tcttgactg	13680
catttcaaaa	ggcacacaag	atcaattagc	gatcctaact	tgcattggga	atgccagccc	13740
attcttgagt	aaccaggcca	gtacttacc	caggcgaatg	cttctcagag	cgctctagtt	13800
ccaatactgt	ggttaataac	gtagatggct	ccgtgatggc	tccatgcctc	gtcgagctgt	13860
cgcaagtatt	tcttgcgctc	attccogaca	ctggcatgga	ttgcctcaaa	gtccatcact	13920
ggcacattag	caggcttaac	aggcttgttt	gttaccgtca	tcttgggagt	tgaacagata	13980
gaatcttgat	ggtgaatttg	ggattagtgc	ctcgaaaga	gtgaggaatc	gtgatatgtg	14040
gagoggatcg	ttaaataaag	gctttgagga	ggtcatttat	aatagtgtca	acaagctgat	14100
ttatcacact	gcaatcctgc	atctatatga	cacggtctct	attattggag	gggtctctta	14160
atgcgcatag	cgcattagtc	ctggaacaaa	aggagtacct	ttccacttaa	tcccttacta	14220
aatatactag	ccatctttag	tagtgaatat	aagtggctta	atataatgct	tatagcctct	14280
tctatagaaa	attgctttct	ttttactatt	atcaaagcct	tataatataa	cgtaatataa	14340
cgcaataacg	taacgtaacg	caatgtaacg	caatataacg	taatgcaata	aggctctttt	14400
taaaactc	ttattatatt	attctttaag	atagctattg	tatataacta	tagaaaattg	14460
aattcatatt	attaactctt	agtaagtcat	tgaggggtta	atagcaaaat	aaattcataa	14520
taattcttca	aggtatata	aataaagact	taattattta	atttaatact	agtatagtag	14580
taattataat	agctttaata	atattaatac	cttttaatat	cttatatgta	agcatcttctg	14640
ttaatagtca	aatcaatag	acgcaagcca	cactaaagtt	aggtgtgtag	gactaacgct	14700

-continued

---

atatgcgcat	ttagtgacct	taatcaacgg	tttcaaagtg	gtatgatctc	attagattct	14760
cggggatcct	cttgagggac	acgatacaaa	tcttcttgag	ctacgtttgc	catcgttatg	14820
agaagtggct	gacaagtact	tcgtaattta	agagcatcgc	gtctggcgaa	ttctacagac	14880
acggaacgtc	agtgacacca	aaccattca	gcccaccac	aaaatctcaa	ttcgactgta	14940
ttttctaacg	atgctcgatg	aaagcccaat	gaggaagggt	gattctgtga	gcaacgacca	15000
aagcaacccg	gagagcaatg	catctgttct	aatccatcag	cagaatcaaa	tcatcacctg	15060
tgctcctccc	ggcccagtct	gccccaatgc	gatagaaatc	aagcgtgaca	ttgtgatcgt	15120
gagactacgg	cccgctgaaa	gttgtccagg	ctatcgcttc	tttcgccgag	tctttgagac	15180
actagagaaa	tggcagctgc	aagtcgacat	gttctcaacc	agtctggggc	gaataacctt	15240
ggcgtgggg	ggcgcagcgc	tgcaagccg	cattagtgc	tcatgcagtg	ccagaaatga	15300
catgatgagc	cgggatctca	tgcacggcat	gcagaagcta	ctcccgacg	atcacataga	15360
gctctttcct	cacatggcca	tcatctcgg	cgttggacac	ccgagccgac	gaatggccgg	15420
ccacatcttc	gccaccatgg	atgccaatga	tattcccacg	gtcatgattt	cgcacggtat	15480
ggcctcaatc	ctttccggt	tccatagcaa	atcatcgtcc	cattcttctg	accagcatgt	15540
tcagacgccg	ccaggctcgg	tatagcctgt	gccatctcgg	agcagtacac	tgctaaagcc	15600
ttgtgctct	tcgagcaatg	cttattccgg	tactccttga	cacattgaac	cgttatctca	15660
gtctcttcat	caaaactctt	ctcgttgacg	aattagatag	attagatgca	caagacactc	15720
gtgtgggct	atggtttttt	tgccgtgata	gacagctaaa	actaaaacct	cattgtagtt	15780
acaagcagct	ttagtacttc	ccgtgatact	gacttttctt	tagcagctga	tcgaccactc	15840
tagtgacaac	aacgttcaag	attccttcgg	atctagtgtc	tctgaagact	aacttccacc	15900
gagtcctagc	tcttgagaaa	gactgtcgcg	caccatctcc	atgacgggag	ccagaaagtc	15960
ttccgtatag	tatgcatcat	tgtagtacia	gtacagccgc	atagtgccgc	ggaaggtaaa	16020
tagctggaac	tcgatggttg	gatcagctgt	tgcattgacg	agggctacgt	cttcgatctc	16080
acaaacaggg	gcttgtgcc	cctttttccc	gtacgcgcgc	gctagatata	tctccaacac	16140
gccgaggcta	ctgaggttgg	gtaccggaa	gggcggacag	ccggcaacgg	gcaaggagcc	16200
aaggaaagcg	gcctcccgcg	tttcatacag	cggcagcagc	tcgagaaagc	tcacagggtc	16260
gcctgcggg	tctgagggca	gcgccgacag	atctcgcgag	taaacagcac	ccagacggtg	16320
cgtagggtcc	tcgaagccac	ccgtgagaca	gaacggcacg	acaagatac	agaggccgag	16380
tgcgtagtcc	ggaacaaccc	acttggggtc	cagaagtgga	cgacggttcg	cgacgagggg	16440
aatgagcatg	ttgcgcgctc	cggtgtgctg	ttgttgaggg	aatgaggccc	agacgcggac	16500
aatactcgcg	tggacggcgg	ccgagacgct	cacgccacg	ttcttgcaac	ccgccacgat	16560
ggcctcgagc	gtcggctcgt	cgaacaaagt	caccaggtgt	tgggtgttgg	caggcgcggc	16620
gtcctcggac	ccctcagcga	cggggagaga	caagctgtac	aaacctgat	gccaatgccg	16680
catcagctca	tcgacggcac	gctccacgcg	gtgtgggacg	ggtgtctcct	gcggcgggaa	16740
ccccagaata	tagtctgatc	cgggcgggag	ggacggttgt	ttgacatcgg	tagttagca	16800
atctaggttg	gcgtcagggc	cgagacggaa	gactgactcg	agaccgagca	tgaaggtgtt	16860
tgctgccttg	tatattccca	cagcgtcaaa	tcggaggtga	gtgctgcgaa	taatcaaggt	16920
cgacgaagga	ggaaccagtc	aggccattgc	cgttggacga	ggttgaaaga	tctttccggc	16980
atcgtccacg	tccctgaaaa	cagcctgggt	cccttggttt	actgtggaaa	cttagccgca	17040
gccactcctc	aggatccatg	aggggaaccg	taaccaggtg	ccgccctgtc	tcatctcgtt	17100

-continued

---

ctgaataggg cggatatatt gcgcctatga gcggctggac atatcgaaaa acaagccaag 17160  
cgcgccggag gtaggggatg gggatcatcaa tgtcttgggg cagtcgtaat ttgagcttgt 17220  
aggtgagacc ctccgcttca cgaccaggag gcgtgttggc gcgttgata cgggcaagca 17280  
gccagttctc caccaagtcg aggggccgtg tgagagagcc gtcttctgat ctgggccatc 17340  
cgggagcgac aatggcatga ttccctgggc tggccatggc tgctctgcct gttaagaaca 17400  
gcggggatag tctgggagag taaagcagtg agggctattg gatattgacg acgaaaacct 17460  
tgcaatgtaa gaagtaagt tcaaaccagc accataggca agcctcctat ttgggcgact 17520  
ttaccgaatt tactactata tcttagggac atctaaatgc gctaccgcgt tttttgaatg 17580  
cgctaccgcg ttagtcttaa aacagaagaa gtacctttt acctaattac ttactaaata 17640  
tactagccct ttttagtaat aatgctagt agcttactgc aatatgcaat gcttatctcc 17700  
ttaagcgtgc taaagcttgt gggctctata gccctgcaaa ttgtatata ctcttgttta 17760  
cttttatcta attagatata tatagaccct agttaacgtg actccacaag ctttagcacg 17820  
ctttaggaga taacctttcc ttttcttct ttttattatt ataaagtctt ataacgtaac 17880  
gtagcgtaat gtaatgtaac gtaataaggc tttaaatata gcataaatag gcatcttaat 17940  
taacagcgaa aatttacaga tgtaagctac actaaaatta ggtgtgggga ctgtctttcc 18000  
gttttaggac taacgtgga tgcgcattta aaaaacgcgg tatacgcatt tagaggctca 18060  
atctgcaacg tttttcatta tctccttggc ctctgtccac cttgtgagtt agtggggccc 18120  
ccacaggccc cctgctataa ggtagtaac cacgtaagca cacgaacgta tagttagta 18180  
atttatata gaaaaattag tagtatatt actattagct tttttatata taagcaaata 18240  
tacctttaat cacttctac ctaattggat atagacccta gtaaactgta ctccacaagg 18300  
tagacagagt ccaaggagat accaatctac ccctaccttg acaactataa atcccttact 18360  
tacttataag atattaaaag tattaatttt gttatttatg gttatataaa atagctatat 18420  
cttaaagaat aatataataa agggcattaa aaaagagtct tattgcataa tgttacattg 18480  
cattgcgcta tttttgtgat aatctaggct ttggctagac ttagtaatat agttgttgat 18540  
tgcgtaattt aaaggactt gtttcacgcg tatccttttg ctatggtgca attggattag 18600  
gcacatcacc cgtacacgtg ctgcagaca tcccgatag cccctcaggc tacaccgtaa 18660  
taaaattgca ttatattgag ttacattgag ttgtgttgcg ttgcgttata ttataaggct 18720  
ttttataata ataaaaagga aggaactctt ctattgaaaa attgataggt attatagtaa 18780  
gccacttata ttactactc ataagagcta gtatattcag taagggttta ggtaaaata 18840  
tgtacttctt ttctcctag actaacgcgg tatgcgcat taataaccct aagccaatta 18900  
taaacacatg tccgacttcg cattcgtcat tttcggcggg gaatcatcag agcacacttg 18960  
cctcatcgtg gtgggtttga tggccaaaag gaattcggat atcagccttg cccgcagcgt 19020  
ccgtgccgcg cggggagtct tgctctctct ttgggtctgt ccaatgtccg gcgacctgat 19080  
catatgatca taatcacaca cggagcacc ataacctggg gtcaatatat aagtcagccc 19140  
atgtgttctc aaaggggctt tctagtgtcc ccatcgccgg ggacttgatc tcgtagcaca 19200  
cgaccatcc caccattgc cgcgacggt tcatacacia cttgatggat ctgacctcag 19260  
tcaacacagc gggcatcgtt tggccgacgg ttgctgcat cgccatctcc tatatcctgc 19320  
tgtogagctt tctctcttg tataggctac ggcacatccc cggcccttc ttggcctcga 19380  
tctcaagtct ttggaatgtt ctaaacatcg tgactggcg cacgtcgcca gtgctcgaga 19440



-continued

---

aactgccagg aaagtacggc ccgctggtgc gaaccggccc caactacggt ctacacagatg	19500
atgccgaaat tttagctcac gtcaatggcg ctccagcaca taccgccgta atgggtgtaa	19560
gtctgtccat atcacatgtc ttttgaaaag tagggagact cagagacca ctacactgt	19620
ggcttccagg gtatgaaggc ttcaaggctg atgaacacga ccatatgggg tcccatatcg	19680
acacgtcggc acatgacgcc atcaaaagca aggtgattgg ggggtacaac ggcaaggatg	19740
ggatagacct cgagggggcc atcggatcgc aggtcaagac cctggtcagt gagatccggc	19800
gccgtcacct tgggcaacct gtcgacttct ctctgtctgat gcgtcagatg gcgctcgacg	19860
ccatcacccg cgtagccttt ggcgaggccc ttgggttcct gacggccgaa gacggagacg	19920
tggtcggcta cgtcagcgcc gttgacaaga tgctgaccta cctgacactt gccagcgacc	19980
tgcccgtagt gcgacagcgt gtcgggtcac gccgcagtc gccggcggtg cgttgcgctc	20040
tgccctatac tggcattggc cgcagctca accatacacg ccgggtggtg gcggagcgct	20100
acgcggccga cgaccccgga aagggcgaca tgacggcctc attcatccgc aaggggctca	20160
cgagatcga gtgcgagggc gagagccacc tgcagctcat cgcggcgcc gacactgccg	20220
tcacgggtgt gcagctccac gctgctgtac atcatgacga cgcgcgcgt gtacacggcg	20280
ctcaaggccg agatcaaggc cgcggtggt gccggcgagg tggtcgaggt catcaccatg	20340
gcccaggccc agaggctgcc gtatctgcag gctgtctgtc tcgagggcct ccgcatgcgc	20400
ccggccgctg tgtacgggca cttcaagtcg gtgccggccg gcggcgatac gctgccgaat	20460
ggtgtacgcc tgcctgcagg caccgccatc gcccccaact acatagcact gacccggcgc	20520
gccgacgtct atggcgccga tctcagtttg tttcgcccgc agcgtttcct cgacgccgag	20580
ccggccaagc gccacgagat ggagcgcgc atggacctga acttcgggct tggccgctgg	20640
cagtgcgctg gcaggaaat tgcctctcat gagatgaaca aggttttctt cgaggctcgg	20700
ggatgtgcat ctccgctctt tgcctttgtt tcttttcctg ctattactct cgcctctctt	20760
tgctatcctg acgcggcgca ggtatgagac gagatgagag actgattcaa tgcgcagtta	20820
ttacgccact tcgacctcca gatcttgtat ccgggcaaag catgggatga atacacgtaa	20880
ggcctctga aacctttttt aataccttc cgcgataggc gtctcgggtg gcgtgagcag	20940
cgtgccatgg atattggagt gctaaccagg ttacctctta cctctgcagg ggctgtggta	21000
tattcgacg ataacatgtg ggtacaaatc accgagagct cgtgagagag cgcaagggtg	21060
agtatagtgt acagggatac acatggcagg ggtggctacg aacgtccatg accacgtacg	21120
aggcggatcc gatggcgggg aaaggacacg actgagacgg ctggagagaa cgatgaagat	21180
gggtaagga attatagcaa tcagaataac gatcgtgttt gtgcgcgctg ggccttgcct	21240
cgcactgcct acctaaaca gtcccgaagt gatgaataaa attcggcctc ggtgccttcc	21300
catttgcctc gagccaccaa tgaagaatca acttggttag aaaccctcct cgccaagacc	21360
atattactag ctgtgataag caccacctgc aaatgctgta ggcagcttgt tattttaaag	21420
gccgacaaac cgcagcatct ttggttagct gggatttagt ggtgccaact atatgagtcc	21480
gcaatctatt gtcccatctc cctgttgagt atctcttcgc atattacctt gagagaattg	21540
ccggccatct caaaatcact gacctocaag tatacttgcg cacagagtct agcccatatc	21600
catcccgcgt aatcgatgat gggatatccg gtcttgtatc tttccgccag agcctttgtc	21660
aagtaacgaa ctgccggggc gacctcttc tccgtcagag cgcggcccgg cacatgagct	21720
ggggcagtg acggggccgt ggcaatggcc aagggagtc gcaactgtac gatgccgcag	21780
ttctcatct ggccatctac cccggoccca agaccaggct cctccaagac ctctgtctga	21840

-continued

---

agaataatcg cgatcttgtc accaccctct ttcgcgagcc actttatgta ctcgtaaatt 21900  
 gccgcctcgc caccacagac gtctcgcctg aagcggaggg cggccgggat gcacagatgg 21960  
 ggcatgtaat cgctcgtggc agtgtaggcg aacagtgtct caaacgaaga cgcggttctg 22020  
 ctggcactga ccatctgcga ccacagggga agtcgagagt tgccattctt gggaataaat 22080  
 ccgaaagagg tcgggatgac ggagcgcac atgtgctggt tgcgctcggc aacgtatagg 22140  
 acagcacaag gtcgaggaac aaataaccac ctagttagat caatgcgtag agtatcagca 22200  
 tggaaaccgc gtattaaggg cgtgtgtgac gttggatctg catacttgtg gcaatcagag 22260  
 acgaagaagt caggctgcag ctccctggaga ttgacctcga actggcccac gctatgcgcc 22320  
 ccgctgacca acgtcatgat gccttccttc tggcatacgc gcagcaagtc ttcgaacggc 22380  
 atcctaacag cagggatgct cactatcgtc tctagaattg ctaggcgcgg gcgtagaccg 22440  
 tcagccctga tttgggcat ggcagtctca aactgggaca caatcttttg gcccgctcgtg 22500  
 gggagctcaa actccaccct acgtgtcttg aagggccgag tctcggccaa ggaagtgatg 22560  
 ccatggtcga tggcaccgta agtagttgat agagtcacca cgacgtcccg ttccctcaaat 22620  
 gcctggttgt aaaggacggt gaagatacca gtagtacgt tggagacgag gacgcactcc 22680  
 gagacggcgg catgaactag atgagcggag ccgatactgt gcctcctgca gcaccaagcc 22740  
 ttgggaaaac tcggagaaca agtcgggctg ggcctccagc agggaccagt aatctctgat 22800  
 ctgcttctc accaccttgg gccatgaccc acaagatgct acgaccacgt cttgttagtt 22860  
 cagatacagt caacatgaa attgaaacgg gcacatcgtg tgacgggcaa ctgacaagaa 22920  
 ttgaggttg tttattccgg atccatgcag aaagcctcca gcataggctt gccgaatggg 22980  
 atacgcttgc tgttctactgt catcttgaca aggcgatgct accgaacaag taaatgggaa 23040  
 tcagtgagag tagagatgcc agcagcactt ggtgaaaagg gacacgtcaa gttaaagcac 23100  
 acggctggca ttcttatgat ttacccaatg ggactaaaat caccatcc acatcccgtg 23160  
 gttgattagt agctgagcag accacatgca ttgtgtgggc ggggtgataa tatgcaagga 23220  
 cacgtctatt cgcactcat tcttttattt acatatgtcg tttgatcatt ggatgcgtct 23280  
 ggtcaagcgt gcatatgta gcttgctct ggaaaagttc atctttctga aagggcagtc 23340  
 agatatttaa taaacttcat tactccaacc catacccccc ttcgtcgaag ctctctaaat 23400  
 aacagtccaa cctacgagac aatcacggtg aagcctctg tttcaactaa tccatcatga 23460  
 ccgctgcttc ttcccctcac ccaggcgtct ctgcagagga catcgaattc taccaagcca 23520  
 acggatatct tcgctgccc caagaggctc acggcctggt cgacgacttg gcaaagtgc 23580  
 aggcattgggt ggcagaaatc tcccagtggg gcctggaac ggggaaatgg cgacattact 23640  
 acgagacgac gaatggcaag catcttctct gggggacgga gaagctcatg gaataccacg 23700  
 cgccatgag agacctgatt gctggogagg cacctctcac actgctcaag tcgctgacgg 23760  
 gcaaagacat ggtggtcttc aaggacgaga tagggtggaa actcccaggc gggaaagggg 23820  
 cggctccca cctcgaccgg cccgcgtact ccatgtttgc ccccagttc atcgagatca 23880  
 tgatcgccgt cgatgccat acggtogaga atggttgttt acagtttcta ccaggctctc 23940  
 acaaggaggc agtcccgatt tcggccgagc gccgcattgc atcggcgtgg ctgagaggca 24000  
 aggagttcat cccatggtc ctcgatcccg gcgacgtctt gatcttcaac gagagcatgg 24060  
 cccatcgggt ggatcctaac aagacggacc aaagacgtgc agctgtcttt ggcacctacc 24120  
 actttgaccg gtcccagccc gacctgcggg acaaattcta cccccaccg ctcatccaca 24180

-continued

---

```

gccccccaga aaacggttaag gcttttcctt ggccagatga tgtttgcatg tttggaggcc 24240
aatgctaaca tgatgcgtga ccaatctcac gtagcctggg ttgaaacagt ggaagcgag 24300
acttgacaag aacgatacgt ataacgtagt ctatagatga cgcacaggaa gttagttacg 24360
aggtaggggg tcgaaatgga acttggcatt caccatgtca aatattgtct tcgctatagg 24420
caagcacatt tgcacagttg ttgcgtctta ttgtctgtgg ccggtgtaaa atcacacgcc 24480
cgtctttcaa tacctagagc acgtttgac aatcccgtat ctctgtcct tggcaacttt 24540
acattctggt agatatagca gcctcacatc ttaggcatca ctctataat accttccctc 24600
ttcgtggcta gttatactgc cttagcactt agggcaaaga ccctctttaa ggcccttata 24660
tatagcctta ttaattaatt ttaattttt tttgggtta ttagttag ccaatgcac 24720
taatataaga aaaacataat tactagcgat acctagctag tataacaatt aacatataat 24780
taatattaac tatagtaata aataaaacc tatataagaa taagctttaa gattataaat 24840
atagggggct ataaggttag attaaagttt ataataaact ttatagctat attagcataa 24900
gatatagtta tagtttataa ctatagttaa acttaattt atttaagttt tacttatagt 24960
ataaattaat ataattcccc ctttctttat aactatattt attcttgtga gaacaaagga 25020
tagctaggta tgagacggg tggaagtgta taatgatgta ttcagctatc taggctattc 25080
acacatgtgg cataacaagg ctataggtat aagggtaaag agggctctta ctctaagtcc 25140
taaggtaacta taatctatag taacctataa ccttaaataa ggaagttatt ataagtaata 25200
cctaagatat aaggtaacta tatttaaacac taccctagt aaaatatcta gcctaaagat 25260
aaagctataa atataactta tttactaaga tacttacttt actaaagtat ttttatttaa 25320
tataaagtct tataccttta ttattt 25346

```

```

<210> SEQ ID NO 16
<211> LENGTH: 16397
<212> TYPE: DNA
<213> ORGANISM: Neotyphodium uncinatum

```

```

<400> SEQUENCE: 16

```

```

tataagcttt tattatagcc tatagtaatt ttataaagta aactagctag ttcttatacc 60
ttaagaatta caggagggta cttatcttat aaatttatat aaaagatat ctcttcggt 120
ttaggcctag ttattactat ataattgaaa aatcactact gcatgtttac gtgttgctt 180
acaagacctg tggatccggg tccaattacc cctacagtg tgtaagagga catctacatg 240
taaacacgca tctgtcaaaa attgaacacg catctgccgt tagtaatgca gcccgatta 300
ttaatgcaga gaaactaacc catagtctct taatattaca cattataata ctataacaat 360
cgcttctttt tattccttta ctattatatt attcctaag atatagctat tgtatactat 420
tatagaagct atggttaatg ctatttagat tggtagacgc aagccacact agaacaggt 480
aggtaggtcg tttatctctga ttaggactaa cggcagatgc gtgttcaatt tttgacagat 540
gcgtgtttag aggtccggcc taagatggac atgaccaacc ggctagatcc ctgtcattgg 600
ctttgcctgg ccctccgctc tcttgagaga caagatcgac ctggtggcta taatttgcta 660
ccaagacaga ttcgctgaat atctgcaagc aagcaagctg cattatcaaa acataaataa 720
cgaccataaa ttacacggag tcgaagaaag aaaggaccag acaagttgg cgattttcca 780
acttggttac tcaccgaac cgtcactctg ttcatatcat cactcgcctc cagtgtctt 840
cccaccttgt ttcaatattg tcgctcgagaa aatgacagat agatagcatt acttcgactt 900
ctaacgggaa ccaagatgac ccaaaggaat tccttccaat tgaattcgaa actcagcttc 960

```

-continued

---

ttcatcttgg	gtaggttata	gcatactata	tgacggctct	ctattccaga	actaatcagt	1020
ttgcgattca	agccgattcc	cggacattht	aggcagttgc	gcagtgcttg	tatacagttc	1080
ggcagtaaga	tcaagccacc	gcctcctcga	aacctaccaa	ctatgcacat	gtactgaatt	1140
gttttctttt	ttgcgcatct	taataggcct	ttgagttcaa	cagcgttgcc	cacggtgccg	1200
gtcttctaaa	cttgacgcag	ttcggcaaca	tctacagccg	cttaccacat	gtttgtctct	1260
ttctccttct	cccgcatgac	tgcttttccc	tgacgaggat	acaagctaata	aaaacacaac	1320
catccttcaa	cagcccaccg	tcaatgtatt	gcaaaatcga	ctggccgggc	tggaaggagg	1380
cgctcgtcgt	tgtggcgtcg	catccggctc	tgccggcgta	gtcgtgacgg	taatggccct	1440
cacaggcgtt	ggcgacaact	tcgtctctac	ctttcacggt	catgctggca	ctttccacca	1500
gttcgacagt	ttagccaagc	agatgggcat	cgagtgcgcg	tttgtgaagt	ctcgagacct	1560
tgacagactt	ggcgcgcca	tcgacgacaa	gaccaagttt	gtctggcttg	agaccatcag	1620
caacctggc	aacgtaatac	tagaccttga	ggcagttctg	acggtctgcc	acaccaaggg	1680
cattcctttg	attgttagta	tcccacatgaa	tactgtccat	cccatagggg	gagttggggc	1740
taaaatttag	ggggatgggg	tttccatccg	ggggatttta	gtgcgataac	acctttggct	1800
gtgccgggta	cttttgcgtg	cccatcgacc	acggtgctga	tatcgtcgtt	cactcggcca	1860
ccaagtggat	cggcgccacc	ggcactacgg	taggcggtat	catcgtcgac	ggcgggtacct	1920
ttgactgggg	ccagcaccgg	gatcgttttc	cccagttcca	tgatccacgg	acgcgactct	1980
gggaacgctt	ttcccgctcg	gcgtttgctg	tccgctgcca	gtttgagatc	ctgcgcgata	2040
cggggagcac	cctcagcgcc	cctgcggccc	agcagctgct	ggtaggcctc	gaatcgcttg	2100
ccgtgcgctg	cgagcggcac	gcgcagaatg	cggccaagat	tgccgactgg	ctgcgcgagt	2160
atccccctct	ggcctgggtc	agctatgttg	gtcaccggaa	ccaccccgat	caccaggagg	2220
cgctcaagta	cctcaagcga	ggccttggct	cggctcatctg	cttcggtcta	cggggggggt	2280
tcgaagcagg	tgccctgttc	tgcgatgcgt	tgaagatggt	catcaccact	accaagtgcg	2340
taattaaact	agccccttct	tctcctgcga	gaacatcgtt	ctgccattct	aacctcgtct	2400
tgacgcttg	gggatgcca	gaccctaata	ctccatcccg	cctcgactac	tcatgagcac	2460
ttcagttccg	agcatcgagc	tgaggctggc	gtcacagatg	atatgattag	gctgtctgtg	2520
ggtattgagc	agatcaagga	tatcaaggcc	gacttcgagc	aggcctttaa	gcaagtgcct	2580
cggggtaaaa	agagtcttgc	taagccttgc	atcggaaaaga	ttctcatgca	ggatgagatc	2640
aatgaagact	tatttgacc	ttcggcttgt	cgtacgtaaa	taggggtcat	tgcgaggcat	2700
ggtaagtttt	cctaatagac	ccgtaattca	cggttgttac	ttttttcatg	tttgccatgc	2760
cgaatttatt	ttcataatat	ttttttttca	agtgtgcaga	actcgtagtc	acttacaaga	2820
ctaaatgccg	taatcaatct	ttagtgcgcc	atgtcctctt	gaccagagct	ttgcacttgt	2880
gtagtgtagt	atTTTTTgta	gtatttttta	tttaatttta	tatctagctt	ataattaaag	2940
gtattatcct	aggaattacg	taatcttata	tagcaaagtt	ctaagaaaaa	taccatataat	3000
aagggtaggt	ctaagagtgg	gttatcgccc	tacaaattag	aaaaactaca	tttgtagtga	3060
atTTTTtagc	gtaaagctag	atatttagaa	aatgtgttac	aaaataaaga	tctttgatta	3120
tttaagcagt	tttaccttat	gcctagtaag	gggtgttttg	gaattatact	actatattat	3180
taaaataaaa	atataacta	ttatcttaaa	tagtcaatta	ttacatatta	aaacttatta	3240
tgcaaaaagg	tgagattht	ttgcatact	taccttaaat	attattacta	cttaaatatta	3300

-continued

---

ggctttccca	tgtttacaaa	cacctaagct	aggcggcgtg	gcattaggca	attacggaga	3360
ctgtctcgct	atagcacgga	gtatatcaga	atcatgtatc	atacagatgc	cgagccaaat	3420
gccgtccatg	atcgaaaacga	agccaaagcg	cagcacgcca	tcaagatgcc	gctgtaatct	3480
cggttgctac	ttggaaacac	ttggaagcac	tcgtgcataa	tgcaagtccg	tctctcatac	3540
atggcctaca	gagttcttga	gggaccagaa	cagacaagtc	tgaacttttg	gcaaggaagt	3600
agctggacaa	ggtttgcaga	cgctctgacc	gatcatagac	caatattgga	ggctggagac	3660
tctgccatat	cttcaatagc	ccctgatgta	gccttacttg	tgtgtgtact	tgcaagggatg	3720
ttataaata	tgtgcggggt	cgattatctt	gttcggtttt	gtaaactcaa	actcgccagc	3780
tctcagcctg	tcagccactt	gagtgaattg	ttattgccat	tgttttactt	cagaacacgt	3840
atcttgacac	attttcagtc	gcagcaatga	cgacagtcgt	acgagaagca	ttgagaacc	3900
atgtcaagct	ggtcagagat	cggaaactcg	ccggccatgt	gcttgcttct	tctgaggcct	3960
ccttctttgt	tgccgacttg	aacgacgtcg	ttcgtaagtg	ggcggcgtgg	aagggaagctc	4020
tcccagatgt	cacccttttt	tttggtacgt	cttcaattcc	ccccatttc	atgtctcact	4080
aagctgggaa	gtcccgtccg	agggtcocgaa	tcaattgact	tggaggcagc	cgtgaaaagc	4140
agctatgatc	gacggctgat	ccagactctg	gccacctgtg	gagccggatt	tgactgtgcc	4200
tcgacggagg	agattgagtt	gatcctgtcc	ttgggcattg	gggcagaacg	aatcatcttc	4260
actcatccgt	gcaagcccgt	ctcctccctg	gggctgtgcc	gcaagcttgg	gatcacgctc	4320
atcacttttg	acaacgaatg	tgagcttcgt	aagctccacc	atcactatcc	cgaggctcag	4380
accgtgctcc	gagtcttcgc	cgacgatcca	accaatgccg	atcccctggg	taccaagttt	4440
ggcgcgcgc	gggacgactt	tgatggactc	gtccgtctgg	ttaaggagtt	gaacatgcag	4500
ctggccggcg	ccagctttca	tcaggtgctg	tctcgctctc	ggtatcttgg	ccggtaaaat	4560
gcatgcatac	agctcgctaa	cggcggaat	tccacaccct	gttccactgt	tccagccccc	4620
agcgtcgctg	tcgatgcagc	tcatacgtc	cggggcatcc	gggacgcagc	cgaggtcttc	4680
gcgcgggccc	gacaggtggg	gctgaaccct	acggtgctgg	atatcggcgg	cggctacacg	4740
gactcgacgt	ttcaacagat	tcagggggcg	gtcagggccg	cgattgcoga	gtgcttcaag	4800
tcggaagtgg	gcgagggacg	cctgcgcctc	cttgccgagc	cggggactct	cttctcctgc	4860
agcccgttct	atctagcagt	caaggttgtc	gcgcggaggg	tgaacgccac	tcggtttggg	4920
catgagccag	ccacgcgtct	ctacatcaac	gacggcatct	acagcaactt	catgatgcgt	4980
ttcatcgtca	acatgacctt	ctcgcccgcg	gccgtcatcc	gggaggggtg	gtggcacgat	5040
caggcggatc	atacgatgcg	cggcgaggcg	tgctctcttt	ggggccggag	ctgcgactcc	5100
aacgactgca	tcaacaggga	ttgccggctc	ggtccggaag	tgagggtcgg	ggactggctt	5160
gtcttcaaa	acatgggggg	tgagcgtttc	cccttttccc	cctgtggaga	atagcataca	5220
tgtattagca	taggagctaa	ccatgcatgg	tgtggcagcc	tacacaacgg	tatgcaaac	5280
caccttcaat	ggcttcacca	gctccaatca	cacaatctac	ctggaacctg	gaaccaccc	5340
aagtcgacga	agcccagtcg	acctttgaac	agttggccat	cggccacat	acggtacgga	5400
gtacgtgggt	ctgtaccgcg	tcccgtccgc	ggctgcatgg	cgatgggtgat	agacgcgcta	5460
gactgatacc	tacatgtaca	tactcoggtc	cggaaagtact	gtcctttag	tagtccgtac	5520
atgctttagt	cacaacggat	gacttggatc	aattgatgca	cactccctgg	ttcgcttgtt	5580
tgacattcgg	tttgcttcg	tgccgatcat	gttacagcca	ctccatgttt	cctccagctc	5640
tttctgtatg	ggccatgatt	cattcaaccc	gttatcatgc	aagcaattat	gtagacggcg	5700

-continued

---

acgccgagct	cttgcaagta	ccttgtagcg	agtagagccc	aattttcctg	caccaagcta	5760
ggtgcccggt	ccccgaaaa	gcggggcagg	ggtccacccc	gagaacggta	aaaatgacga	5820
cacatggcgg	aacccccctct	cttggcgaca	atcacaacaa	gacggacaag	gtattacaac	5880
gacctggggt	tctgaccgac	tggcagaagt	gctcatgatt	gaatactagg	tagcagcaga	5940
ctgtacggac	tagttcattg	tttcggtgca	aatcacttca	ctgctataag	cctcaggcct	6000
ccgtcccctc	ctacatgacc	gttgctgctg	tcttgcgctc	atactcaaga	gcaactcggc	6060
gggccagcca	ctgccttgcc	gtcatcagat	ccttcactc	gagcgtgctc	cacttcctctg	6120
gcttctcgca	gccaggcaga	ggtttgatca	tctcgtccag	attcaagtgt	ccgaagaaga	6180
cgagcgagta	gcgctgcacc	agctcgtcat	cgccaccggg	acttcctccg	tacatgtacc	6240
ggctcggcgc	cgtaacgcgg	tggagggcgc	tccgccatct	gccgttggtc	tgcttctcaa	6300
gcagggtccc	aacttgaaca	atcatagccc	ccttgatcgg	aggcacaggt	ctgtaaatgt	6360
cttcctcgta	gtcgtgcagc	tcaagcccc	cgaccatgtc	ctggaagagc	atggtgaact	6420
ggcagtagtc	cgatagcgcg	ttgagccggt	tcgaggatcc	gctggccagc	tgtgaaacgg	6480
gctgccccag	gaaatagttc	caggttgaat	gggtgctcat	gtggcgcggc	tcaaaactttt	6540
ttccaatgta	atccaaatcc	tccatcccga	ggatttcgca	cacgagcgc	atgttctgga	6600
gagattgctt	gtagcaggcc	gcgaaccact	tcttcaagaa	gtcagatag	cccgggagat	6660
gctgctccac	caagtttaga	tctggggttc	ccggggggta	cgttccgcaa	gggtcctgca	6720
gctccatggc	ctctttgagc	tccgtcggca	tctccttgcg	gagcctctcg	atctcgtcgg	6780
ggtcccagac	gcccctgcgag	gagatggcct	cacctgtgcc	cgtaacagccc	tggaatgct	6840
ttgatacgtc	aggtgggatg	tgaaccgagt	tcttgaccgc	cagaggcagg	tcaaaaaact	6900
tcttgcaactg	catttcaaag	gcacacggga	tcaattagcg	ctcctaactt	gtatggggaa	6960
tgccagccca	ttcttgagta	accaggccag	ctacttacc	agacgaatgc	ttcctcgagc	7020
gtctcagtc	caatactgtg	attaataaca	tagacggctc	cgtagatggt	ccacgcctcg	7080
tcaagctgtc	gcaagtatcc	cttacgctca	ttcccgacac	tggcatggat	tgctcctcaa	7140
tccatcactg	gcacattagc	aggctcaaca	ggcttggttg	ttaccgctcat	ccttgaggatt	7200
agacagataa	aatcttgatg	ctgaatttgg	gattagcgtc	tcgaaaagag	tgaagaattg	7260
tgatttgtga	ggtggatcgt	tgaataaagg	ccttggggag	atcatttata	atagtgttca	7320
caggctgatt	cgtaacactg	caatcctgca	tgtatatgac	acggtctcta	ttattggagg	7380
gattctgatt	aatgggatca	taaagcgcga	taccactgcg	ttctctgaat	gcatactgcg	7440
ttagtcctag	aacaaaaaca	gtacctttct	atttaatccc	ttgctaata	tactagctct	7500
ccttagtagt	aaatataagt	ggcttactat	aatgcttata	acctcttcta	tagagacttc	7560
cctaataatgaa	attcctttat	ttttattatc	gtaaaagcct	tataatacaa	tgcaatgcaa	7620
cgcaataata	cggaatgtaa	caaggctcct	tctaattact	ccttattatt	ttattcttta	7680
agatatagct	atctttatata	taactataga	aaatattatt	aatattatta	atacttagta	7740
agtaagggat	tcatagtaaa	tagatctagt	aataattact	caaggtttca	aagtggatg	7800
atccattat	attcactag	ctcctctcta	gggacacgat	acaaatcttt	ttaggctaag	7860
tttgccattg	ctatgagaag	tggctgcaa	gtacttcgta	atttaagagc	atcgctctg	7920
gcgaattcca	cagacacgga	acgtcagtaa	caccaaacc	atccagccca	cccacaaaat	7980
ctcaattgaa	ctgtatcttc	taacgatgct	tgatgaaagc	ccgatgcgga	agggtaattc	8040

-continued

---

tgtgagcaac gaccaaggca acccagagag caatgcatct gtttcaatcc accagcagaa	8100
tcagatcadc acctgtgcct ccccaggctc agtctgcccc aatgccatag gcatcaagcg	8160
tgacattgtg gtcgtgagac tacggcccgt caaaagttgt ccagactatc gcttctttcg	8220
ccgagctctt gagacactag agaaatggca gctgcaagtc gacatgttct caaccagtct	8280
ggggcgaata accttggcgc tggggggccgc agcgcctgcaa gccggcattg gtgactcatg	8340
cagtgcaga aatgacatga tgagccggga tctcatgcac ggcatgcaga agctgtccc	8400
ggacgatcac atattagagc tcttctctca catggccatc atctcggctg ttggacaccc	8460
gagccgacga attgctggcc acatctctgc caccatggat gccaatgata ttctcacggt	8520
catgatttcg cacggtatgg cctcaatcct tccccgttc catagaaggt catcgtccca	8580
ctctctgac cagcatgttc agacgcccc aggctcggta tagcctgtgt catctcggag	8640
cagcacactg ctaaagcttt gggcgtcttc gagcaatgct tattccggta ctccctgaca	8700
cattgaacag ttatctcagt ctcttcatca aaacgcttct cattgcagaa tcatattaga	8760
tgacacaagc actcctgtg ggctatggtt tttttggccg cgatagacag ctaaaactaa	8820
attctcattg tagctacaag cagctttatc acttcccgtg atactgactt ttctttggca	8880
gtgaccgcac cactctagt acatgacaac gacgttcaag cctccttcgg atctagtct	8940
tctgaagact cacttccatc gagtcccaac tcttgagaaa gactttcggc caccatctcc	9000
atgacggaag ccagaaagtc ttccgtatag taagcatcat tgtagtaca gtacagccgc	9060
atagtccgc ggaaggtaaa tatctggaac tcgatggtg gatcagtcgt tgcaattgacg	9120
agggctactg cttgatctc acaaacagga gcttgtgccc ccttttggcc gtacgcacgc	9180
gctaggtatc tctccaacac gccgaggctg ctgaggttcg gtaccggaa gggcggacag	9240
ccggcaacgg gcaaggagcc aaggaaagcg gcctcctggc tgcatacag cggcagcaac	9300
tcagaaaaac tcacagggtc gcctgccgag tctgagggca gcgccgacag atctcggag	9360
taaacagcac ccagacgttg cgtgaggctc tcgaagccac ccgtgagaca gaacggcacg	9420
acaaagatac agaggctaag tgcgtagtcc ggaaccacc atttggggtc cagaagtga	9480
cgaggttcg cgacgaggg aatgagcatg ttggcgcgct ccggtgtgct gctgttgagg	9540
ggaatgaggc cccagacgcg gacaatactc gcgtgcacgg cggccgagac gctcacgcc	9600
agctcttga acccgccacg attgcctcaa gcgtcggctc gtcgaacaag gtcaccatgt	9660
gttgggtgtt ggcagggcgc gcgtcctcg acccctcacg cacagggaga gacaagctgt	9720
acaaaccatg atgccaatgc cgcacagct catcgacggc acacccacc cgggttgaga	9780
cgggtgtctc ctgcccggg aacccagaa tatagtcat gccggcggg agggacggtt	9840
gtttgacgct ggtagtgtag caatctaggt tggcgtcag gccgagacgg aagactgact	9900
caagaccgag catgaagggt tttgtgcct tgtatagtcc cacagcgtca aatcggaggt	9960
gagtgtcgc aataaccaag gtcgacgac gaggaaacca gtaggccatt gccgttgga	10020
gaggtcgaat gatcattccg gcatcgtcca cgtcctgaa aacggcctgg ctcccttgg	10080
ttacgtggaa acttagccgc agccactcct caggatccat tgggggaacc gtaaccaggt	10140
accgccctgt ctcatctcgc tctgaatagg gcggatagat tgcgcctatg agcggctgga	10200
cgtatcgaat aacaagccaa gcgcggcgga ggtagggat ggggtcatca atgtcttgg	10260
gcagtcgtaa tttgagcttg taggtgaggc cctcggcttc acgaccagga ggcgtgttg	10320
cgcttggat acgggcaagc agccagttct ccaccaagtc gagggggcgt gtgagagtgc	10380
cgctcttcta tgtgtccat ccgagagcga caatggcatg attcctcgc ctgaccatgg	10440

-continued

---

ctgctctgcc tgttaagaac ggcggggata gtctgggaga gtaaagcagt gagggcgatt 10500  
ggatatacgac gacgaaaacg aaggaagttt ccaactagca ccataggcaa gccacctatt 10560  
tgggcgactt taccgaatca ctactacatc ttgtgatagt ccgtacttat tggatatttcg 10620  
acagcactgg tgtgatactg catgatgtaa ccgcaccaag gtgccaaatg acgtgtctca 10680  
tacctgcctt atgcacgcta gaagcgggtga catctgtgac taggccgatg ggtcaataaa 10740  
tgcgcattgt accgcgttgg tcctaataccg ggtaaatagt ccacacactt aacttttagta 10800  
tagcttatac ctataatatg aaaagctata aacattgtta aagctattat aattactatt 10860  
atactgtatt aaattaagta attaactcctt attatttagt gctttaataa tgattactaa 10920  
attaatttat tataaatccc ttactaactt actaaact actaaact aaaagtattg attatatttt 10980  
cttgagttat attaatagct atatcttaaa gattaatata acaagggca ttcaaaaaga 11040  
gccttattac ataagtgtac attgcattgc gttttatttg tggtaactca ggctctgcct 11100  
agacctagta atagattgt taatgtatgc gcatttcgta accctaggct aatcgtagac 11160  
acatgtccga tgttaaggac attcagatc aaggaattcg gatatacgacc ttgccagcag 11220  
cgtccgtgcc gcgcggggag tcttgccttc tctttgggtc tgtccaatgt ccggcgacct 11280  
gatcatatga tcataatcac aaacgtagca cccataacct ggggtcaata cataagtcag 11340  
cccatgtgtt ctcaaaggag ttttctagt tccccatcgc cggggacttg atctctcgta 11400  
gcacacgcac catcccacc attgccactg acggctcata cagaacttaa tggatctgac 11460  
ccaattcaac acagctggca tcgtttgct gacggtcgct gccatcgcca tctcctatat 11520  
cctgcagtcg agctttctct cttggtacag gctacgccac atccccggcc ctttcctggc 11580  
ctcgatctca agtctttgga atgttctaaa catcgtgact gggcgtacgt cgcgggtgct 11640  
cgagaaactg ccaggaaggt acggcccgt ggtgcgaacc ggcccact acgttctcac 11700  
agacgatgcc gaaattttgc gtcacgtcaa tggcgttcgc agcacatacc cccgtaatgg 11760  
gtgtaagtct gtccatatca cacgtctttt gaaatgtagg gagactcaga gactcactta 11820  
tactgtggct tccaggggat gaaggcttca gggtcgatga atacgacct atggggctccc 11880  
atatcgacac gtcggtagac gacgccatca aaagcaaggt gattggtggg tacaacggca 11940  
aggatgggat agacctcgag ggggcoactg gatcgcaggt caagaccctg gtcagtgaga 12000  
tccggcgtac acgcggtca aggccgat caaggccggt gtggatgccg gcgaggtggt 12060  
cgaggtcacc accatagccc aggccagag gctgccgtat ctgcaggctg tcgtgctcga 12120  
gggtctccgc atgcgcccg ccgctgtgta cgggcacttc aagtcggtgc cggccggcgg 12180  
cgatacgctg ccgaatggtg tacgcctgcc tgccggcacc gccatcgccc ccaactacat 12240  
agcactgacc cggcgccgc acgtctacgg cgctgatgct gatttgtttc ggcccagcgc 12300  
ttctctcgac gccgagccgg ccaagcgcct cgagatggag cgcgccatgg acctgaattt 12360  
cgggcttggc cgctggcagt gcgctggcag gaacattgct ctcatggaga tgaataaggt 12420  
tttattacga ggttggtgga tgtgcatctc cgctctttgc ttttgttctt ttctgctat 12480  
tgccctgcc ctctttgct atcctgacgc gggagaggta tgggacgaga tgagagactg 12540  
attcaatgcy cagttattac gccacttcga cctccagatc gtgtatccgg gcaaagcatg 12600  
ggatgaatc acgtaaggcc ttctgaacct tttttcaact ttcgcgcata ggcgtctcgg 12660  
gtggcgcgag cagcgtgcc tggatattgg agtgctaacc aggttacctc ttacctctgc 12720  
agggcgtgg tatattcgca gcataacatg tgggtacaaa tcacggagag ctgtaagta 12780



-continued

---

tagtggacgg	gaatacacat	ggcagtggtg	gccatgaacg	tcgatggcca	cgtacgagge	12840
cgttaccaat	ggttggggga	ggacacggct	gagacggctg	gagagaacca	tggagatggg	12900
gtaaggaatt	atagcaatcg	aaataacgag	cgtgtttgtg	cgcgccgggc	ttgacctcac	12960
actgcctacc	taaacaagtc	cccaagtgat	gaataaaatt	tggcctcggg	gccttctaata	13020
ttgctctgag	ccaccaatga	aaaatcaact	tggtagaaa	acctcctcac	caaaaccata	13080
ttactagcgt	gataagcaac	acctgcaaat	gcgtaggcag	cttgtcatct	aaaaggccga	13140
caaccgcagc	atcttgggct	gaaaacttgt	tacccaagca	tcttgcattt	ttggttggt	13200
cgaatttagt	cgtgccacct	atatgagtc	gaaatctctt	gtcccatctc	cctgctgagt	13260
atctcttcgc	atattacctt	gagagcattg	ccggccatct	caaaatcact	gacctccaag	13320
tatacttgcg	cacagagtct	agcccataatc	catccgcggc	aatcggcgat	gggtatccag	13380
gtcttgatc	tatccgccag	agcctttgtc	aagtaacgaa	ctgccgggcc	gacctctttc	13440
tccgtcagag	cgccgcccg	cacatgagct	ggggcagtgg	acgggcccg	ggcaatggcc	13500
aagggaagtc	gactgtctac	gatgcgcgag	tctctcatct	ggccatccgc	cccggccccg	13560
agaccaggct	cctccaagac	ctctgtctga	agtatctcgg	cgacctgtgc	accacctct	13620
ttagcgagcc	acttgatgta	ctcgtaaatt	gccgcctcgc	caccacagac	gtctcgctg	13680
aagcggagg	cggtcgggat	gcacagatgg	ggcatgttat	cgctcgtggc	tgtgtaggca	13740
aacagtgtct	cgatgaaga	cgctgttccg	tttgactga	ccatctgcga	ccatagggga	13800
agttgagagt	tgccattctt	gggaataaat	ccgaaagagg	tcgggatggc	ggagcgcatc	13860
atgtgctggt	tgcgctcggc	aacgtataag	aaagcacaag	gtcgaggaac	aaatagccac	13920
ctagtaaagt	gaatgcgcag	aggatcagca	tggcaccacc	gtatcaaggg	cgtggagaga	13980
cgttgatcc	gcatacttgt	ggcaatcaga	gacgaagaag	tcaggggtgca	gctcctggag	14040
attgacctca	aactggccca	cgctgtcgc	cccgtcgacc	aatgtcatga	tgcattcctt	14100
ctggcatacg	cgagcaagt	cctcaaaccg	catcetaaca	gcagggatgc	tcactatcgt	14160
ctctagaatt	gctagggcgc	ggcgtagacc	cttagcctg	atttgagcta	ttgtagtctc	14220
aaactgagac	acaatctttt	cgccagtcgt	ggggagctca	aactctaccc	tacgtgtttt	14280
gaaggatcga	gtctcggcca	aggaagttaa	gccatggtcg	atggcaccgt	aagtagttga	14340
tagagtcacc	acaacgtctc	gttctcaaaa	ttcctggttg	taaaggacgg	tgaagatgcc	14400
agtagtgacg	ttggagacga	ggacgcactc	cgagacggcg	gcgtgaacga	gacgagcaag	14460
gccgagacgt	gcctcctgca	gcaccaagcc	ttggtaaaac	tcggagaaca	agtcgggctg	14520
ggcctccagc	agggaccagt	aatctctgat	ctgcttgc	accaccttg	gccatgacc	14580
acaagatgct	acgaccacgt	cttgttagtt	cagatacatt	tcacatggaa	actgaaacgg	14640
gcacatcgtg	taatgagcaa	ctgacaagaa	ttgaggttg	tgtattccgg	atccatgca	14700
aaagcctcca	gcataggcct	gccaatggg	atagccttgc	tattcactgt	catcttgaca	14760
aggogatgtc	accgaacag	taaattggaa	tcagtgagag	tggagatgcc	agcagcactt	14820
ggtgaaaagg	aacacgtcaa	gttatagcac	acggctggca	ttcttatgat	ttacctaatg	14880
ggacgaaaat	caccctacc	acatcccgtg	gttggttagt	agctgagcag	accacatgca	14940
tgtgtggcg	gggtgataat	atgccaagga	cacgtaaatt	ggcatctcat	tcttttattt	15000
acatgtgtcg	ttgatcatt	ggatgcttct	ggcaacat	gcatatgtat	gcttgcctct	15060
gaaaaagtgc	aactttctga	aagggcagcc	agatatttaa	taaacttca	aactccagcc	15120
cataccccc	ttctgctgaa	gctgtctaaa	gaacagtcca	acctacgaga	caatcacggt	15180

-continued

---

```

gaagccctct gtttcctgta atccatcatg accgctgctt cttcccctca cccaggcgtc 15240
tctgcagagg acatcgaatt ctaccaagcc aacggatata ttcgcctgcc ccaagagget 15300
cacggtctgt tcgacgactt ggcaaagctg caggtatggg tggcagaaat ctcccagtgg 15360
ggcctggaaa cgggaaaatg gcgacattat tacgagacaa cgaatggcaa gcatcttctc 15420
tgggggacgg agaaactaat ggaataccac gcgcccctgc aagacttgat ttctggcgag 15480
gcacctctcg cactgctcaa gtcgctgacg ggcaaagaca tgggtggtctt caaggacgag 15540
ataggttggg aactcccagg cgggaagggg gcggttcttc acctcgaccg gcccgcgtag 15600
tccatgtttg ccccccagtt catcgagatc atgatcgccg tagatgccc aacggctcag 15660
aatggttgtt tgacgtttgt gccaggctct cacaaggaag cagccccgat ctccggccgac 15720
ggccgcatgg catcgccgtg gctagagggc aaggagttca tccccatggt cctcgaccgg 15780
ggcgacgtct tgatcttcaa cgagagcatg gcccatcggg tggagcctaa caagacggac 15840
caaagacgtg cagccgtctt tggcacctac cactttgacc tgtcccagcc cgacctgagg 15900
gataaattct acgcccaccg gctcatccac agccctccgg aaaacggtaa ggcttttcca 15960
tgaaaagatg atgtttgcat gtttggagac caatgctaac atgatacgtg accaatctta 16020
cgtagcctgg gttgaaaaag tgggagcgca gacttgacaa gaacaatacg cataaagtag 16080
acagaagaag ggatttggct aggaggtagg gggtcgaaat ggaacttggc attcatcacg 16140
ttgctcttta ttgtctgctg cgggtgtaaa atcacacgcc tgtctttcaa tacctagagt 16200
acgtttacac aatcccgtat gtcctgtcct tggcagcatt acaaccaga agccgacata 16260
ggagccacaa ttaattgggt cacttaatgc acataccgag gaagtcctaa tcattaacag 16320
tccatacgtg tagcttgcgt atattgattt ttactataac taatatgccg atatatataa 16380
tattaccagc ccgggcc 16397

```

&lt;210&gt; SEQ ID NO 17

&lt;211&gt; LENGTH: 7478

&lt;212&gt; TYPE: DNA

&lt;213&gt; ORGANISM: Neotyphodium uncinatum

&lt;400&gt; SEQUENCE: 17

```

gacgaaggca gtcattcaca gcatggaagc gccggggatc ttaacaggaa tttggacgat 60
aatggctctg aagaaagtgc cacgatatct tattcaaacy cggcttggat gctcccacag 120
gctcacaatg agacttttcc agtcctctta caagcattaa tgcggacgct cctgcttctc 180
tgcaaatgta cgcttgggga cagtggacct ctgcctcca cgaggaagcc ataccacgct 240
gacctggtaa agcagaagca aactatccgt catttgctgc accgcaggag acggattggt 300
cttccaaaat gcaagattg gggcaagcta gcacatgcaa gtcgatgctg actttacgtg 360
gcagccctcg ttgaagcatt atcattgctt aaacatcttt tgggcgagga tatgcatggc 420
acgagatatg agcccgtgga agacatttcc aacctgggtt acggtcttca aaccgatct 480
agagccgaca cgaacagatt ccggagagtc atcaaacaca gagaccagca gcggcgaagg 540
gggogaacgg tcgatcatgc aagttgaagt cgcgaatcta tctggtcagc tccgtcagat 600
atcgacgcta gaagaaggcc ttctacgagc atggaggagg gaaaacaaat cagaaggttg 660
gattgcttcc aagcttaata agaaaaaac ggctaactcc gatctccgct cacggaagaa 720
gtaaataatcc ttaaccaggg caaaatttac cacggaaaaa gatgatctta ttaattatg 780
aaaggaggac gagcaactta catggacgca aattcaggag cggcatggca accagttcca 840

```

-continued

---

cacgcatcc aaggagtcac tccaggtgcg ctaatgtaca aggctgaaga gccgtaaaaa	900
aaaatgtgac ctacggcagt tgatgtggtg aacaaaattg gatatttga aagaaatggt	960
gtcacgtcgc acgccctatg gaaggtattg gcagtgact tggatcttga ttttaagctat	1020
ttagagggga atttcgtcaa tacttataga ggtctctgaa gttgttgctt tcctgatatt	1080
gccatctgta acttggttga tacagttgtt gttggagccc cctgttttca aagaattggg	1140
ctcccgttga catatttgcct cgtggtcact tacgcctggt ataactatgc gccagagtac	1200
cttggttatt ggactgttca cggatgacta gctgtaatcc atgtgatgca gtcggcactt	1260
ccgatttatt caatcatggt tgggtcttgg tgctgcactt gaacacgacg taatgaatgc	1320
aatgggcaca caactgccac atttctctgc ttctgtgcct cgattgcgtc atagaatctc	1380
cagcctccat ctgaagcctc atcccgcgca acctcggaca agccaaagtc cttgtagatt	1440
attatagcat aaagactaag cagaccccaa acccaaacc cgaatttgt cccctcctc	1500
ttcatgtaca tctacaagct ttaccactc attgctcttg ttcttgttac gctggagatt	1560
gtccaatttc cctgcgaact tgccaggag tgattcaag tcatcaaca cctccgagtc	1620
cagaaggata aacgtattgt gccgcggtgc atcccgaagc tcgggtatcg cctcgaggca	1680
ggcggtcatt ttggcgtctc atgtcgtgga taggggcgtc gcggagctcc gagttgtcaa	1740
tgaggggtgc atgttatgaa accgcctcat cagctcggtt tacttggctg gtcggcgtcg	1800
tgggtcggct gctgcccagg gtaccacgcg gcgactcgtt aaaaaacaga aagctgaccg	1860
tcatttatag atcatctcat ggtcacgagc ccggccatgg ctggatatct cgcaagcagc	1920
tggacagatt gagaacaac catcacttcc aacttctctg ctacaacaga attgaagttt	1980
gcggcgtagc ttgttgcaat cttcgtattg ggccattgct gctcctatcc ctgacttgat	2040
cgccaatagt accttcaagt tctccgtata cgaaatttgc tcatgacgtc caggctaate	2100
cccgattatg cggcgaagc tctccatggt tggtgatgac aacgcgtcgc acaaccctg	2160
aaaaatagca cacttacaa ctaactctac tacaaggta catttctcaa tagactgggt	2220
tagtagggca tacaactga attattatct gtcaatagtg cctaaggggg gagcggcaca	2280
gcgtggccac tcatgggac aggtggcggg aaccttgac tagatccgt agctcgagag	2340
agctcgagag aagcttccgc cgaaaggcta ggacggcct aggatgctaa ttctgggtaa	2400
attttagga tcagactgag acttgaagat ctgactaga tcattctgat aactgcaacc	2460
cagggatgca ggagaggag ggaacaaca tctgtcgta attggcgtt cagatagaag	2520
ccgtcaacgg gtccatacaa tgccccccc cccccctga attattttt gtcaaatcta	2580
aatgccctag tcttttggc ctctctaata gctgcaatta gctgtacgtc cgtacggagt	2640
aagtattgct attattatta gtaagctaca aggaaaattc acggggtgtt aagtgccgct	2700
taaagatag gagggggtgt attactagtg ccacacaaag gtgggggtgg tggggcgtgg	2760
tctgtgtctg ttagtgttc acccacaagg gcataattga tccctgccgc acgatagtct	2820
cgctactcaa ctgactgaga caagagtcca ccctagcta gtcatttcc aagacctctg	2880
taacttcata gtatgtttca gcaactgtaca agtaccacc cgatggtaga ggtacttagg	2940
tatttaagcc gtagtctgca cctcttaca gggcgggaca actcaataga ggtggtcaca	3000
ttgaacccta gcttcgggt ccaacagtta ggacgagg gcgtaccgca attattaaat	3060
gcgtatgtac atgtatatgt accgcgttat tataatgtctg tggatctaga ataccggtcg	3120
acctgtcatg gtctagccct aagggtcaat cgcgggtgcc tgcgccacca tgtgggtgat	3180
gtgccaatc ccctgttac ccataggcaa cgacaaaaga atacgtattg tacaagtcac	3240

-continued

---

cattgacttg	tgcaattgac	acctatattg	ctaggcctag	gcaaagccta	ggctatcaca	3300
ccaccacac	atnttaagt	ggcttatgtt	tactaattat	tattaataaa	atcaatagta	3360
tcttttatag	ttatagagaa	tagctatatg	ctagggatta	atataataaa	gggtatttta	3420
aaagagccct	ataatagtta	tattatatta	tgttataaag	ccttttgata	ataaaaatga	3480
aggaactata	tagaagaaat	tattgattga	tttttatatt	ttttttgggg	tcattagtta	3540
tgactagtgt	atctaattta	taagtaatat	gacaattact	agcaatacct	agttagttta	3600
ataattgaca	tataaataat	cacgactata	gtaatagata	aaacctgtaa	ttcctaggaa	3660
taagctttaa	ggtcacaaat	acagggggct	gtaaggtcag	agcaaagttt	gcgataaaact	3720
ttgtggtaaa	agagattata	agcattaaca	tggcttccta	tatttgctgc	caagtacttc	3780
ttctagattt	agactaacgt	ggtatgcgca	tttagtggtc	ctaggacgta	tgggccggac	3840
tgttgtaggc	tctccgtcct	agcctagcgt	atctatgtat	tggcttgcca	acaggcttac	3900
gggggctagc	caagatgtag	atntgaacaa	gatgctatca	aactgctatt	gtgtctgccg	3960
agaaggttac	tggcagatga	caccgacgga	aacgatgcc	atnttcttct	ggcatagaaa	4020
ctgagacgta	ttggtgtttg	tcaatactag	agtcttatca	gtggaacatg	gaaaagcgtg	4080
gggacaaaa	ctgcctagt	gtcatccaaa	aaaaccaat	cgctacttgc	gtctgaacct	4140
gaacagtgta	tcgattcgat	atcgcacaga	aagtggcttc	acagaagagc	cgtctcctct	4200
acataccatg	cttgaaaccc	ctccaggttg	ttggccagac	agttttccag	ctcccagcga	4260
tacagaatca	accccccaac	cctgaccggt	ttgttagagc	agtccacagt	acaaagcgac	4320
aagagccttt	gtgcaacct	ccaagttttc	tcttcttctg	tagcctcagc	tgttttcttg	4380
cttttgctg	catgtgatg	gtagagtgtc	ttgtccaaa	gtaggctcat	cttcttctcc	4440
cactggcagt	gggacttgg	agtcgcctcg	agttgacaaa	tgcccgcctg	ttggcacttt	4500
gagatgattt	cgcacaacca	ctctacctga	acagtgatga	ccgcggggga	gttgaccaga	4560
agtgtaggac	actgggggtc	atagaggaaa	aacatgttag	ggaatgaatg	gatggccatt	4620
ccgagatg	actcgacacc	atcggaccag	gcatcttcta	aacggatgcc	attccggcct	4680
ctgatatgaa	gactcctgag	cccgttgcc	tcgtcaccaa	accgggtggc	aaaaatgatc	4740
gcttcgcatt	caactgtctg	cccatgaacg	cgaatacttg	tctctgtaat	caactcgatt	4800
tgctggttgc	tgatgtcaat	aatcttcaca	tgtggttgg	ccatgatctc	gtaaagatcc	4860
tcttccaaac	agggctgctt	gatgccaag	gcaaaagatg	gaatctgagg	caccaggagc	4920
tcccgtttg	tcacatcgcc	gattctagct	cgtgtccgcc	gagcccagaa	atcatacgca	4980
tcccgtttg	cttgatggtt	ctggcacaga	tcccgaacc	cagccatcca	gaaagcccag	5040
cctcccgcca	gatagcgttg	ttgataaaaa	tggtttcgct	cctctattgg	gacatccaac	5100
gtgtcctggt	cacggggcac	gtagcogaaa	cogttcgaag	tctgcagtcc	aagtcgtagg	5160
gcttctctgt	ggtcgtcggg	tctcatgcaa	agtgccgttg	ccgtctggtt	cgggctgccg	5220
tacttgcgta	gagtgaggca	tggagactgc	tggaaatcgc	tcatggcctt	ggctatctta	5280
cccacagatt	ggatgatctg	aactcogctt	ggccccgttc	caatgacagc	cactctctta	5340
ccgcgcatac	tgacagcgtc	atgaggccat	tttgcggtgt	ggtagatggc	accgcggaat	5400
cgagacattc	ctggaatcct	agggatattg	agaaccgacg	aaaaccctac	agctggaatg	5460
aaccatcgcg	cctcggctct	tctgcoactc	tctaaagtga	cgtccatctc	ctgggtagtt	5520
tctgagtacc	tcgcccggga	aaccgaaaca	ccaaactcaa	aactagcaga	gatttcccat	5580

-continued

---

cgcttggtcca	cggtgtcaaa	atatctgagc	atctctgcac	gggtgggaaa	ttgctctccc	5640
cattcccaat	cttgagaag	ctctgcatca	tagaactggt	agaaggaaa	taggctgtcg	5700
actgctgctc	cgggataagc	gttctcgcgc	cagacacctc	caagacgttc	ctggcgctcg	5760
aacccttga	ctcgaatcc	gagcttttcg	cagtctttag	tcatagttca	gtcctacctc	5820
tctactctat	tcgtgtcttg	gatggcaacg	tagactcacc	tgtagacagc	gagaatacct	5880
gaaaaaccag	cgccaacgac	gattgcgtcc	aaattggtca	atgtcatctt	agtgaaatga	5940
agaagaatta	aataactata	tcagaatag	aaccaaattt	tgtgtatca	gaaatgtcat	6000
caaaggctaa	cagctccggg	gagagaaaag	cttgatcgag	gttgaaattt	actgagggtc	6060
gtaagggact	gatactaaga	cggctgatta	tctgtgtgag	aatggtcaga	atgggtagct	6120
gcgcaattgg	atagactagt	ttgggagggg	gagtatagtc	gtacacatgg	attcgcaaat	6180
gggaatgaag	cgtaagtct	gttgtgatat	aataaggtca	ctaaatgcgc	ataacgcgtt	6240
agtcccaatc	cgggttaacg	gtccatacac	cttgtgccta	tatgtgtaat	atttaaaggt	6300
atcaatacta	ttaaagctat	tataattatg	actatactag	tattaagtaa	ttaactctct	6360
attatgtacg	ctttaaataa	ttgctactaa	ataaatttaa	ccgctataaa	tcaatcactt	6420
gcttaataag	tattaatagt	attaattata	tcttgtatag	ttatataaat	agctttatct	6480
taaagaatga	cacaataaag	ggcatgtaa	aagagcctaa	ttacattata	ttgctgtgtg	6540
ttgtgttgcg	ttatattata	ttatgaggct	ttttacaata	agcattatag	tcagtgcatt	6600
ttatactagc	tctctaatat	atttagcaag	gggcttagta	tactagtact	ttctttttag	6660
gaataacgcg	gtatgcgcat	ttactgacct	agtacaatac	acccctgaa	ttattttaca	6720
aatctacata	acaggggtaa	ttaagctaata	tagatattag	ctaggaaata	aaggagatag	6780
ggggtagtac	attatactac	tagttatcta	tatagaaata	gatatacttt	ttcgtggcgc	6840
tataacactt	gtatatttcc	ctcattgctc	tctaaaacaa	aacagagggt	atattacata	6900
tatagctaata	catagctatt	agagagagac	gaataactag	ggcatgtaga	tttgtaaaat	6960
aattcagggg	gtgtattgta	taatagggca	taggagaggg	gtgagtgggg	cgttcactcc	7020
gtgtcatgct	acttctcaca	caaggagggg	aagcgttgct	attcgagct	gtgttttctt	7080
gcttaccaga	gctatgccta	ccacgtaata	aggccacatc	ccacatctca	cgcccccca	7140
ctaaattatt	tgtatagcac	tccctggcaa	taaaaaatag	ttagaattac	agtacacccc	7200
ctgaattatt	ttacagatct	tcataacagg	gttgattgcg	tgaattaagt	gctagcaagg	7260
aaataagga	gatagaggct	aggattagga	agtacctaga	ttcctttata	ctatatttaa	7320
aatttttcat	atcttctagt	agtactacat	accctacata	ttttccttat	agctctctat	7380
agtaataata	gtgttatagt	gcacttatag	ctaactaaag	ctattagaga	gaaacgaaaa	7440
aactagtca	tgtagattga	aaaaggctga	tagaccag			7478

---

55

What is claimed:

1. An isolated nucleic acid molecule comprising: a nucleotide sequence consisting of or complementary to ORF8 of SEQ ID NO: 15 or a nucleotide sequence encoding a variant which hybridizes under high stringency conditions of 0.1x SSC, 0.1% SDS at 65° C. to ORF8 of SEQ ID NO: 15 and wherein the encoded polypeptide of said variant has  $\gamma$ -type pyridoxal phosphate (PLP) enzyme activity.

2. The isolated nucleic acid of claim 1, wherein nucleotide sequence is ORF8 which encodes lolC in SEQ ID NO: 15.

3. An expression vector comprising the nucleic acid compound of claim 1.

4. An isolated host cell transformed with an expression vector of claim 3.

5. The host cell according to claim 4 wherein the host cell is a bacterium.

6. The host cell according to claim 5 wherein the host cell is *E. coli*.

7. The host cell according to claim 4 wherein the host cell is *Neotyphodium*.

\* \* \* \* \*