



University of Kentucky
UKnowledge

Surgery Faculty Patents

Surgery

7-15-2014

Axial-Centrifugal Flow Catheter Pump for Cavopulmonary Assistance

Dongfang Wang

University of Kentucky, dongfang.wang@uky.edu

Joseph B. Zwischenberger

University of Kentucky, joseph.zwischenberger@uky.edu

Right click to open a feedback form in a new tab to let us know how this document benefits you.

Follow this and additional works at: https://uknowledge.uky.edu/surgery_patents

 Part of the [Surgery Commons](#)

Recommended Citation

Wang, Dongfang and Zwischenberger, Joseph B., "Axial-Centrifugal Flow Catheter Pump for Cavopulmonary Assistance" (2014).
Surgery Faculty Patents. 1.
https://uknowledge.uky.edu/surgery_patents/1

This Patent is brought to you for free and open access by the Surgery at UKnowledge. It has been accepted for inclusion in Surgery Faculty Patents by an authorized administrator of UKnowledge. For more information, please contact UKnowledge@sv.uky.edu.



US008777832B1

(12) **United States Patent**
Wang et al.

(10) **Patent No.:** **US 8,777,832 B1**
(45) **Date of Patent:** **Jul. 15, 2014**

(54) **AXIAL-CENTRIFUGAL FLOW CATHETER PUMP FOR CAVOPULMONARY ASSISTANCE**

(71) Applicant: **The University of Kentucky Research Foundation**, Lexington, KY (US)

(72) Inventors: **Dongfang Wang**, Lexington, KY (US);
Joseph B. Zwischenberger, Lexington, KY (US)

(73) Assignee: **The University of Kentucky Research Foundation**, Lexington, KY (US)

(*) Notice: Subject to any disclaimer, the term of this patent is extended or adjusted under 35 U.S.C. 154(b) by 0 days.

(21) Appl. No.: **13/803,939**

(22) Filed: **Mar. 14, 2013**

(51) **Int. Cl.**
A61M 1/12 (2006.01)
A61M 1/10 (2006.01)

(52) **U.S. Cl.**
CPC **A61M 1/1012** (2014.02)
USPC **600/16**

(58) **Field of Classification Search**
USPC 623/3.1-3.3
See application file for complete search history.

(56) **References Cited**

U.S. PATENT DOCUMENTS

973,868 A	10/1910	Kneuper
2,273,558 A	2/1942	Burgess
2,474,665 A	6/1949	Guarino
2,742,158 A	4/1956	Schuller
3,103,928 A	9/1963	Broman
3,183,908 A	5/1965	Collins et al.
3,410,263 A	11/1968	McGinnis
3,429,443 A	2/1969	Howard
3,768,977 A	10/1973	Brumfield et al.
3,855,995 A	12/1974	Bentley

3,856,475 A	12/1974	Marx
3,898,045 A	8/1975	Bowley
3,934,982 A	1/1976	Arp
3,935,110 A	1/1976	Schmid et al.
3,960,657 A	6/1976	Bowley
4,017,279 A	4/1977	Bowley
4,094,792 A	6/1978	Bentley
4,098,275 A	7/1978	Consalvo
4,134,402 A	1/1979	Mahurkar
4,188,360 A	2/1980	Kurata
4,196,075 A	4/1980	Bentley
4,205,042 A	5/1980	Giurtino et al.
4,268,476 A	5/1981	Raible
4,297,318 A	10/1981	Raible
4,368,118 A	1/1983	Siposs
4,372,914 A	2/1983	Raible
4,374,088 A	2/1983	Stenberg et al.
4,533,516 A	8/1985	Johnsson et al.
4,568,253 A	2/1986	Wood
4,573,883 A	3/1986	Noon et al.
4,612,126 A	9/1986	Alt et al.
4,623,518 A	11/1986	Raible
4,698,207 A	10/1987	Bringham et al.
4,770,652 A	9/1988	Mahurkar
4,808,155 A	2/1989	Mahurkar

(Continued)

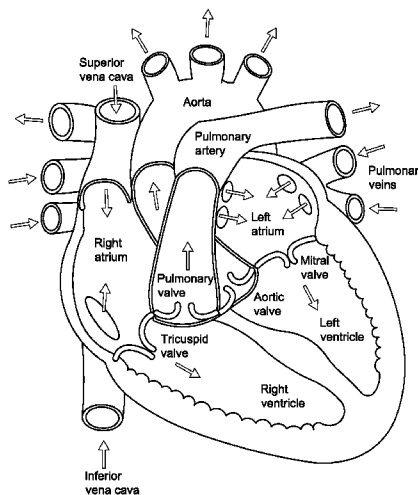
Primary Examiner — Paula J Stice

(74) *Attorney, Agent, or Firm* — King & Schickli, PLLC

(57) **ABSTRACT**

An axial-centrifugal flow catheter pump for cavopulmonary assistance is provided, incorporating a rotor providing both an axial fluid flow and a centrifugal fluid flow. The rotor includes a first terminal impeller configured to provide a centrifugal and axial fluid flow in a first direction, a second terminal impeller configured to provide a centrifugal and axial fluid flow in a second direction opposite to the first direction, and a central impeller configured to provide a predominantly centrifugal fluid flow. The first and second terminal impellers each include blade arrangements configured to provide a centrifugal and axial fluid flow directed toward the rotor central impeller. Cavopulmonary assistance devices are provided including the axial-centrifugal flow catheter pump.

20 Claims, 8 Drawing Sheets



(56)

References Cited

U.S. PATENT DOCUMENTS

4,846,152 A	7/1989	Wampler et al.	6,220,832 B1	4/2001	Schob
4,874,581 A	10/1989	Sutherland et al.	6,224,829 B1	5/2001	Piplani et al.
4,906,229 A	3/1990	Wampler	6,247,892 B1	6/2001	Kazatchkov et al.
4,908,014 A	3/1990	Kroyer	6,336,911 B1	1/2002	Westerbeck
4,915,837 A	4/1990	Verity	6,368,557 B1	4/2002	Piplani et al.
4,925,377 A	5/1990	Inacio et al.	6,379,618 B1	4/2002	Piplani et al.
4,975,247 A	12/1990	Badolato et al.	6,395,226 B1	5/2002	Plunkett
5,034,188 A	7/1991	Nakanishi et al.	6,406,452 B1	6/2002	Westerbeck
RE33,932 E	5/1992	Fukasawa et al.	6,413,233 B1	7/2002	Sites et al.
5,116,308 A	5/1992	Hagiwara	6,428,747 B1	8/2002	Dueri et al.
5,120,501 A	6/1992	Mathewson et al.	6,454,999 B1	9/2002	Farhangnia et al.
5,139,741 A	8/1992	Hagiwara	6,497,841 B1	12/2002	Plotkin et al.
5,158,533 A	10/1992	Strauss et al.	6,503,450 B1	1/2003	Afzal et al.
5,188,732 A	2/1993	De Niel et al.	6,508,983 B1	1/2003	McBurney et al.
5,197,951 A	3/1993	Mahurkar	6,527,699 B1	3/2003	Goldowsky
5,217,689 A	6/1993	Raible	6,572,821 B2	6/2003	Knott
5,221,255 A	6/1993	Mahurkar et al.	6,579,496 B1	6/2003	Fausset et al.
5,225,161 A	7/1993	Mathewson et al.	6,613,008 B2	9/2003	Aboul-Hosn et al.
5,236,665 A	8/1993	Mathewson et al.	6,630,107 B1	10/2003	Merce Vives
5,270,004 A	12/1993	Cosentino et al.	6,644,320 B2	11/2003	Groth et al.
5,270,005 A	12/1993	Raible	6,669,661 B1	12/2003	Yee
5,282,783 A	2/1994	Lindsay	6,682,698 B2	1/2004	Chambers et al.
5,316,724 A	5/1994	Mathewson et al.	6,689,315 B2	2/2004	Linker et al.
5,338,512 A	8/1994	Mathewson et al.	6,716,157 B2	4/2004	Goldowsky
5,354,277 A	10/1994	Guzman et al.	6,716,188 B2	4/2004	Noda et al.
5,358,689 A	10/1994	Jones et al.	6,723,283 B2	4/2004	Ghelli et al.
5,374,245 A	12/1994	Mahurkar	6,726,653 B2	4/2004	Noda et al.
5,395,525 A	3/1995	Takano et al.	6,730,267 B2	5/2004	Stringer et al.
5,421,405 A	6/1995	Goodin et al.	6,746,416 B2	6/2004	Hubbard et al.
5,476,444 A	12/1995	Keeling et al.	6,884,360 B2	4/2005	Chang
5,507,629 A	4/1996	Jarvik	6,908,446 B2	6/2005	Yokoyama et al.
5,578,077 A	11/1996	Kassatly	6,960,322 B2	11/2005	Stringer et al.
5,718,871 A	2/1998	Elgas	7,022,099 B2	4/2006	Litzie et al.
5,725,357 A	3/1998	Nakazeki et al.	7,022,284 B2	4/2006	Brian et al.
5,762,868 A	6/1998	Leonard	7,135,008 B2	11/2006	O'Mahony et al.
5,762,875 A	6/1998	Gremel et al.	7,238,320 B2	7/2007	Ghelli et al.
5,770,149 A	6/1998	Raible	7,541,000 B2	6/2009	Stringer et al.
5,787,729 A	8/1998	Wijaya	7,704,054 B2	4/2010	Horvath et al.
5,788,287 A	8/1998	Gremel	7,785,247 B2	8/2010	Tatum et al.
5,817,279 A	10/1998	Eilers et al.	8,152,443 B1	4/2012	Pemberton
5,823,987 A	10/1998	Elgas et al.	2004/0226868 A1	11/2004	Shoji et al.
5,851,174 A	12/1998	Jarvik et al.	2006/0009728 A1	1/2006	Litzie et al.
5,858,233 A	1/1999	Elgas et al.	2006/0177343 A1	8/2006	Brian, III et al.
5,906,741 A	5/1999	Elgas et al.	2006/0253194 A1	11/2006	Dial
5,922,202 A	7/1999	Elgas et al.	2007/0073393 A1	3/2007	Kung et al.
5,958,255 A	9/1999	Hobrecht et al.	2007/0217948 A1	9/2007	Ghelli et al.
5,964,694 A	10/1999	Siess et al.	2007/0249888 A1	10/2007	Wu et al.
6,017,493 A	1/2000	Cambron et al.	2008/0199357 A1	8/2008	Gellman et al.
6,048,363 A	4/2000	Nagyszalanczy et al.	2008/0234623 A1	9/2008	Strauss et al.
			2010/0168848 A1	7/2010	Horvath et al.
			2011/0257462 A1	10/2011	Rodefled et al.
			2012/0095280 A1	4/2012	Timms
			2013/0094997 A1	4/2013	Wang et al.

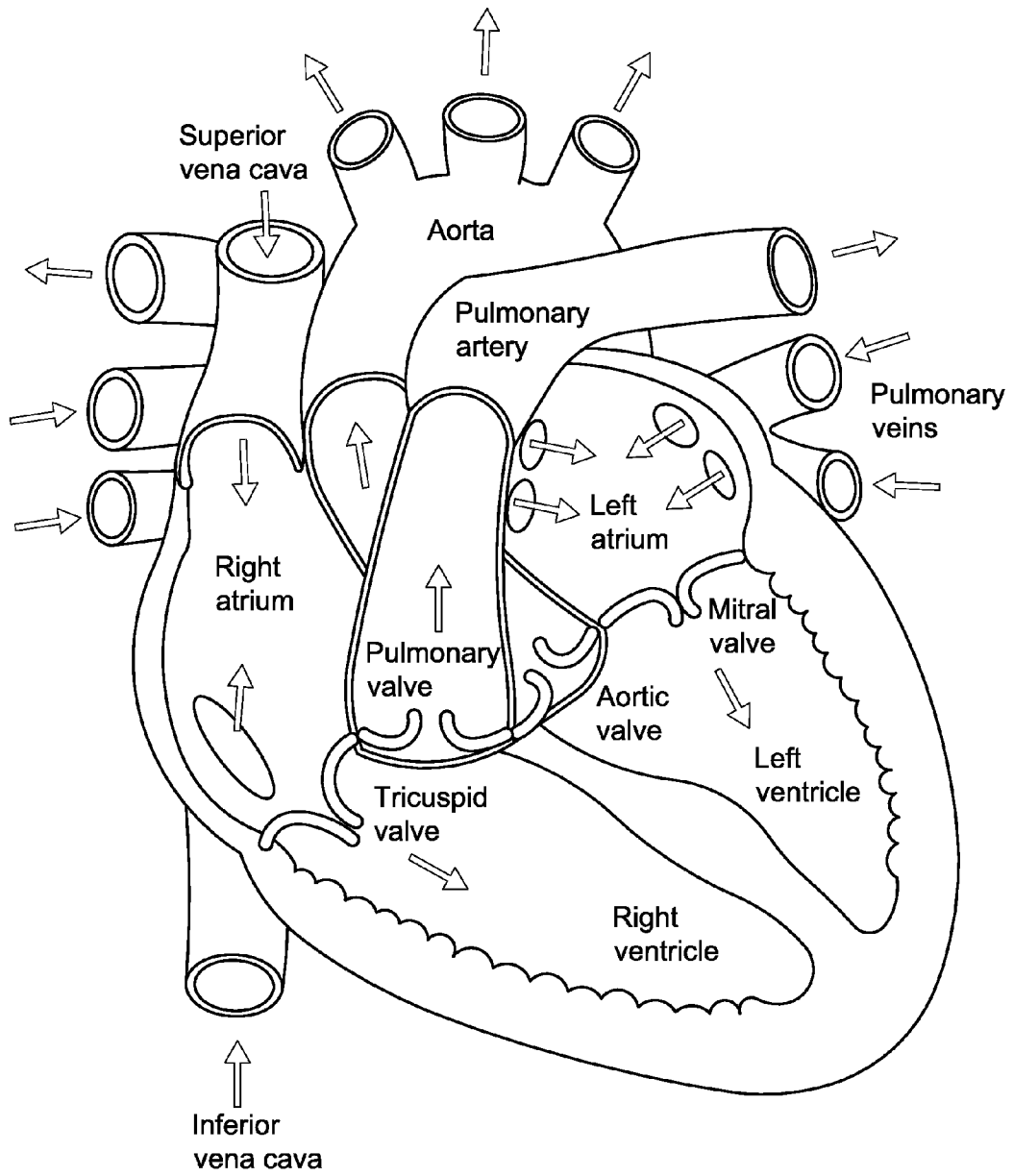


FIG. 1

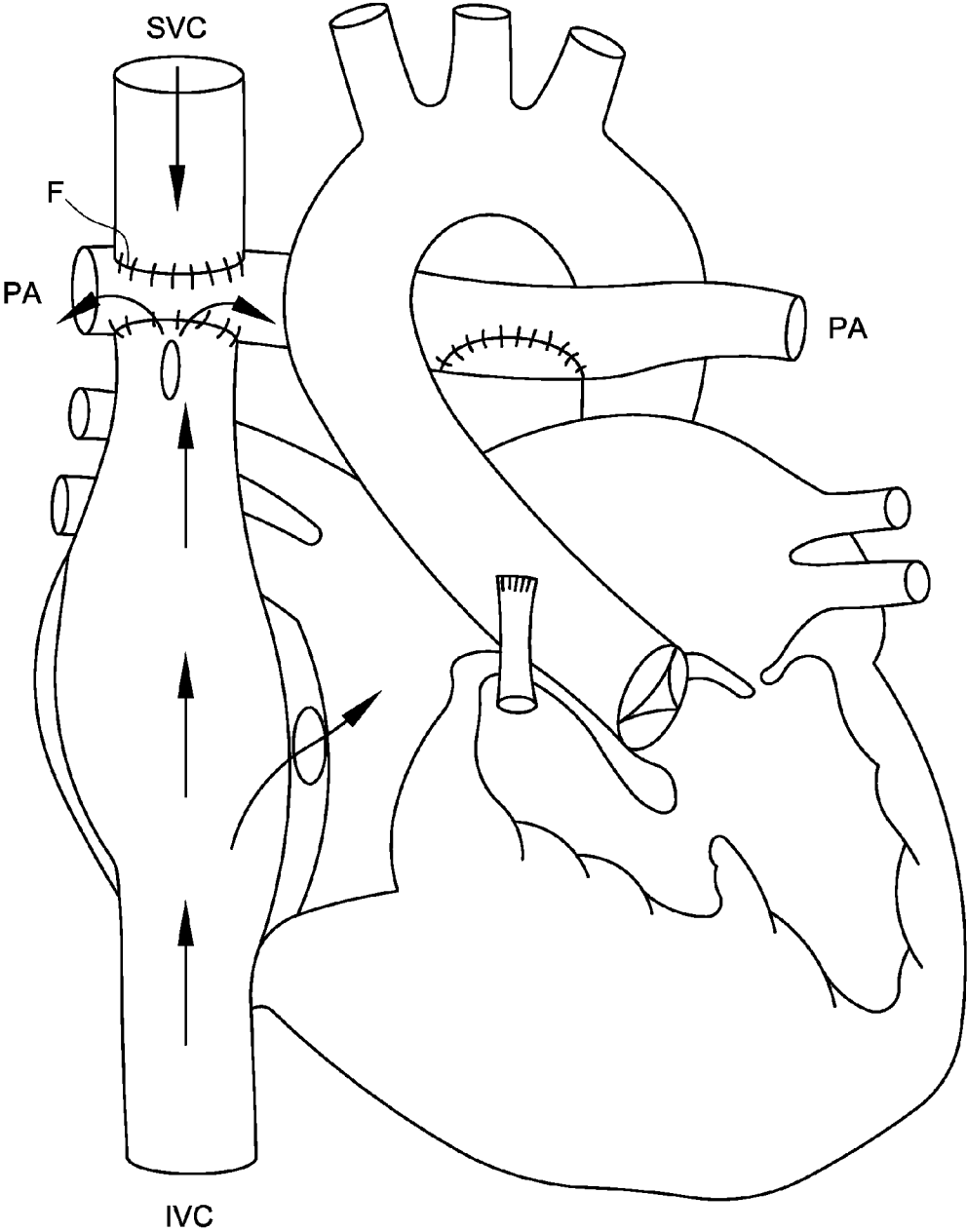


FIG. 2

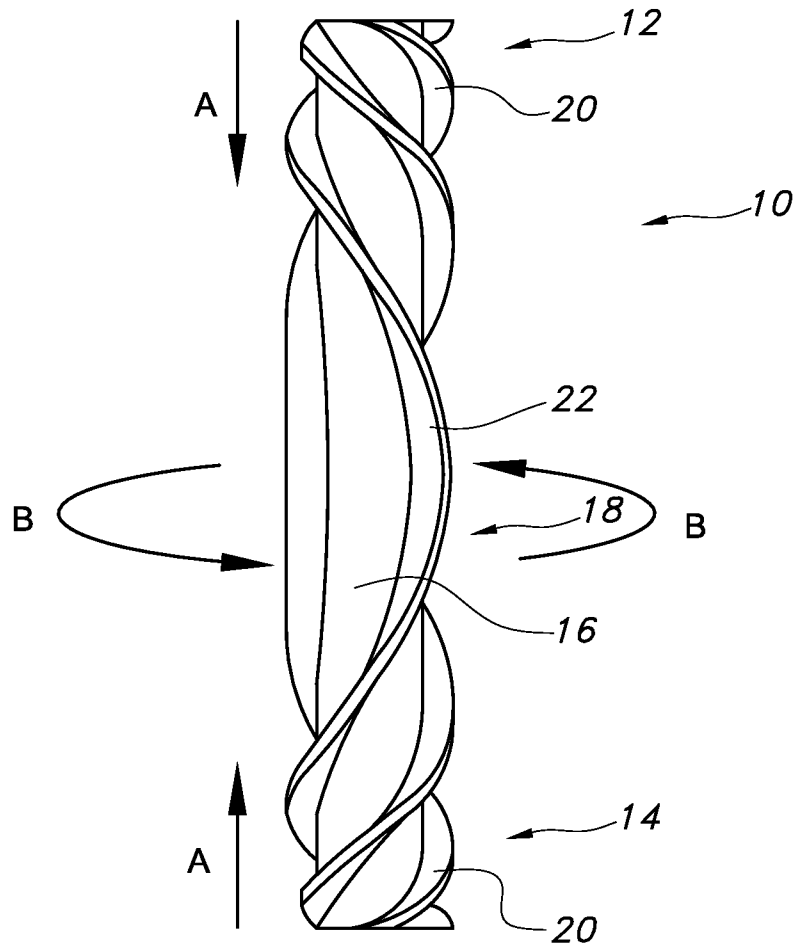


FIG. 3

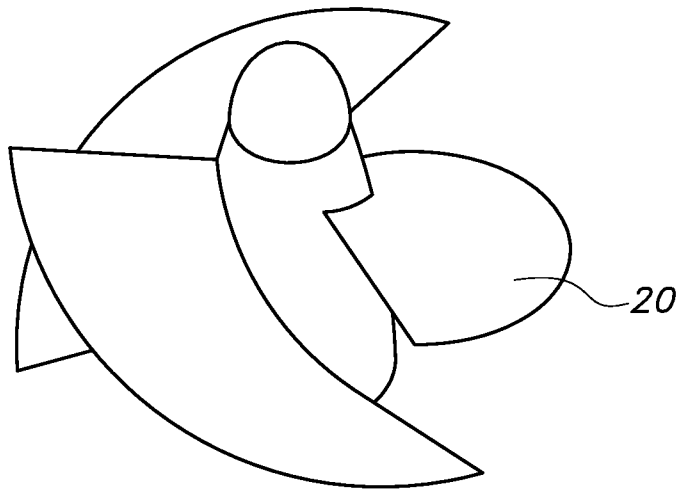


FIG. 4a

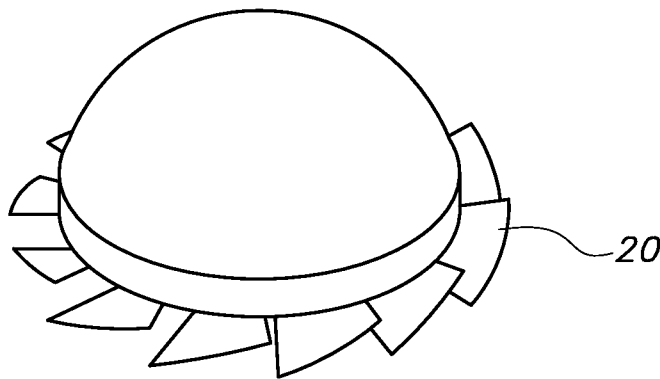


FIG. 4b

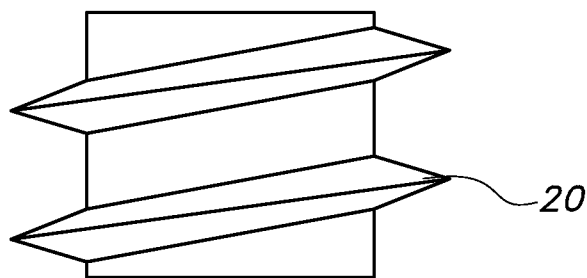


FIG. 4c

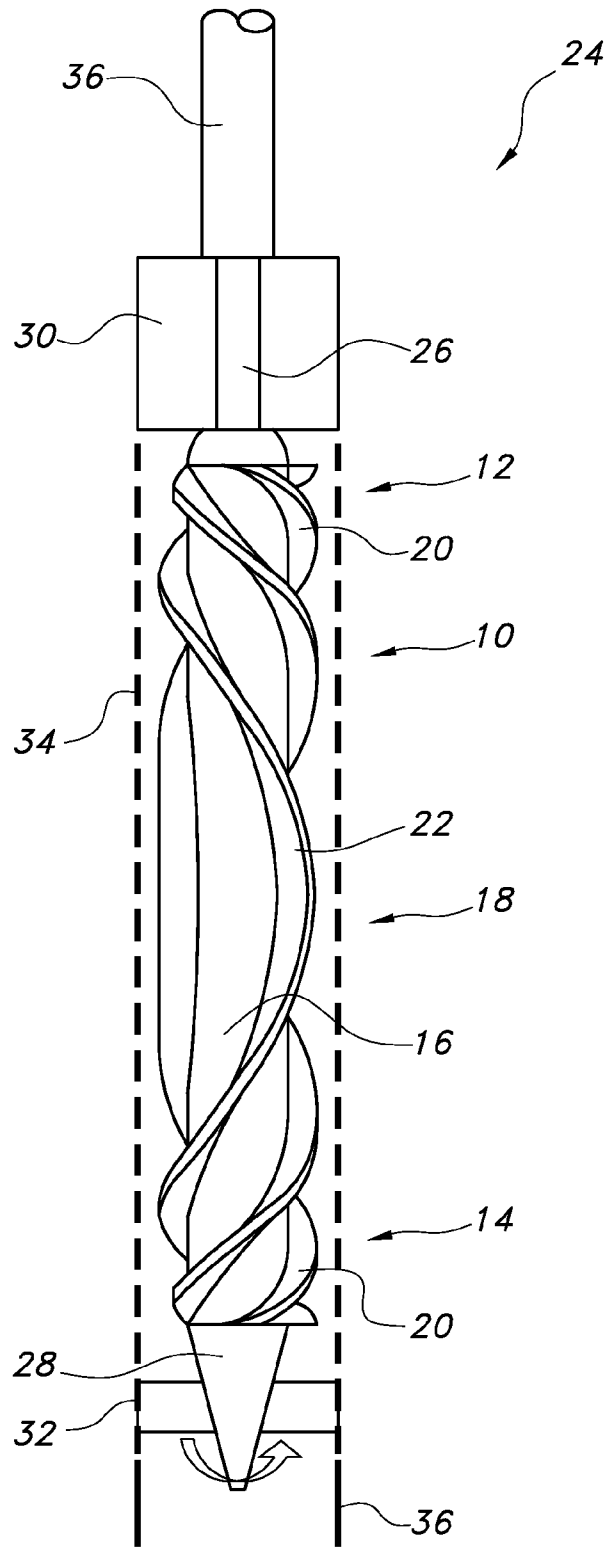


FIG. 5a

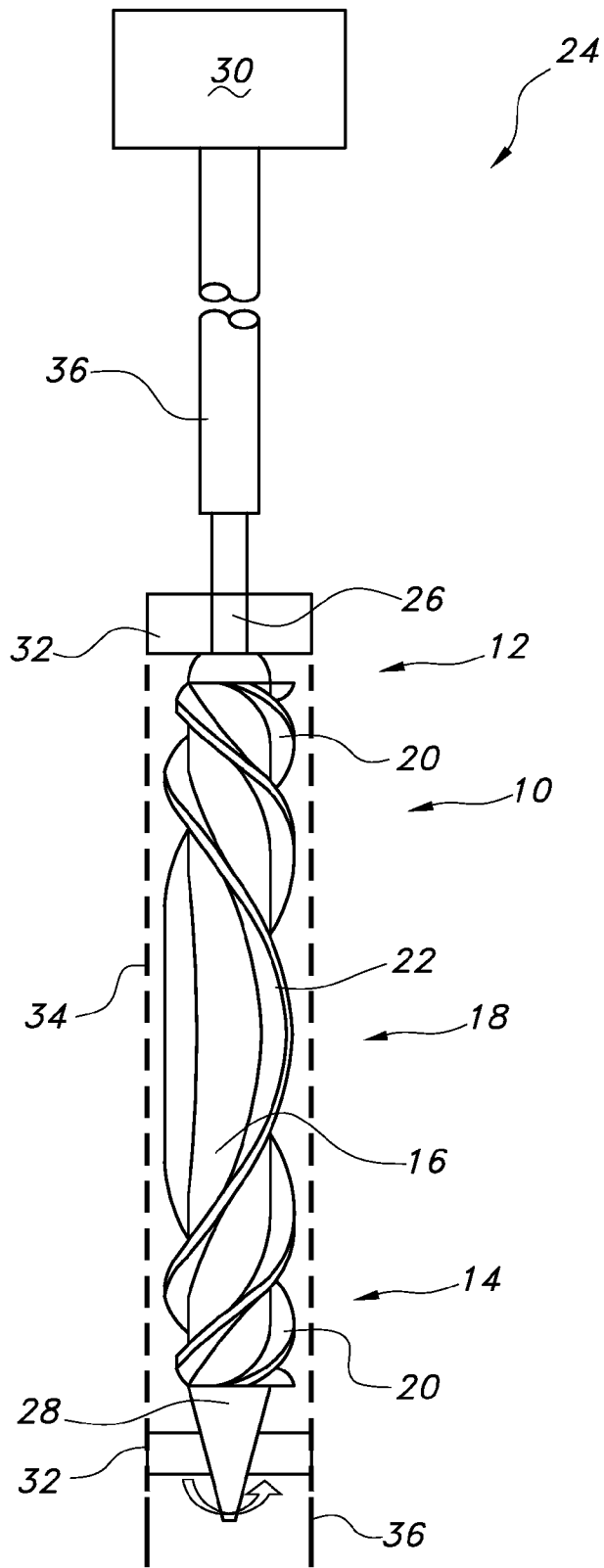


FIG. 5b

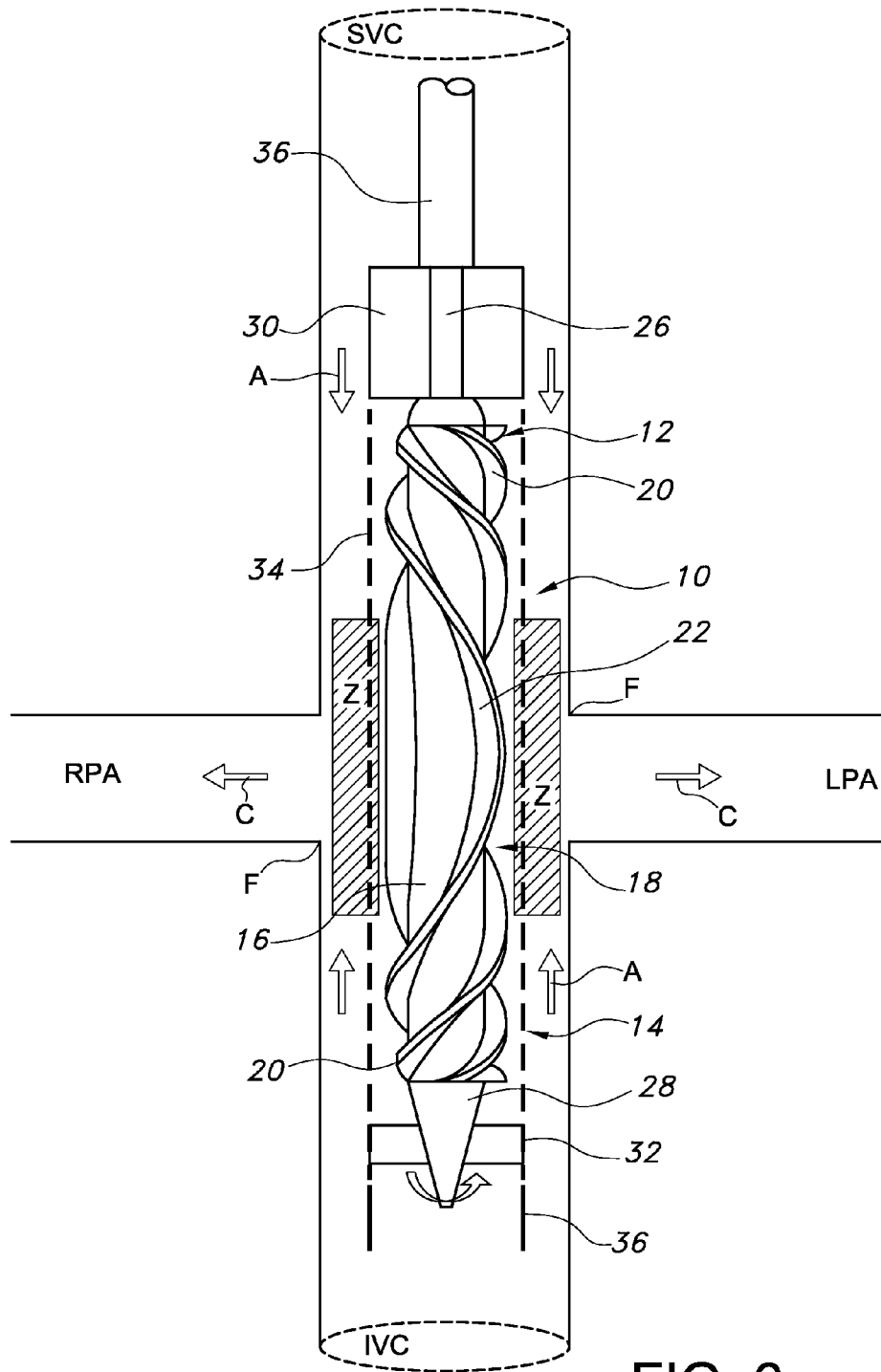


FIG. 6a

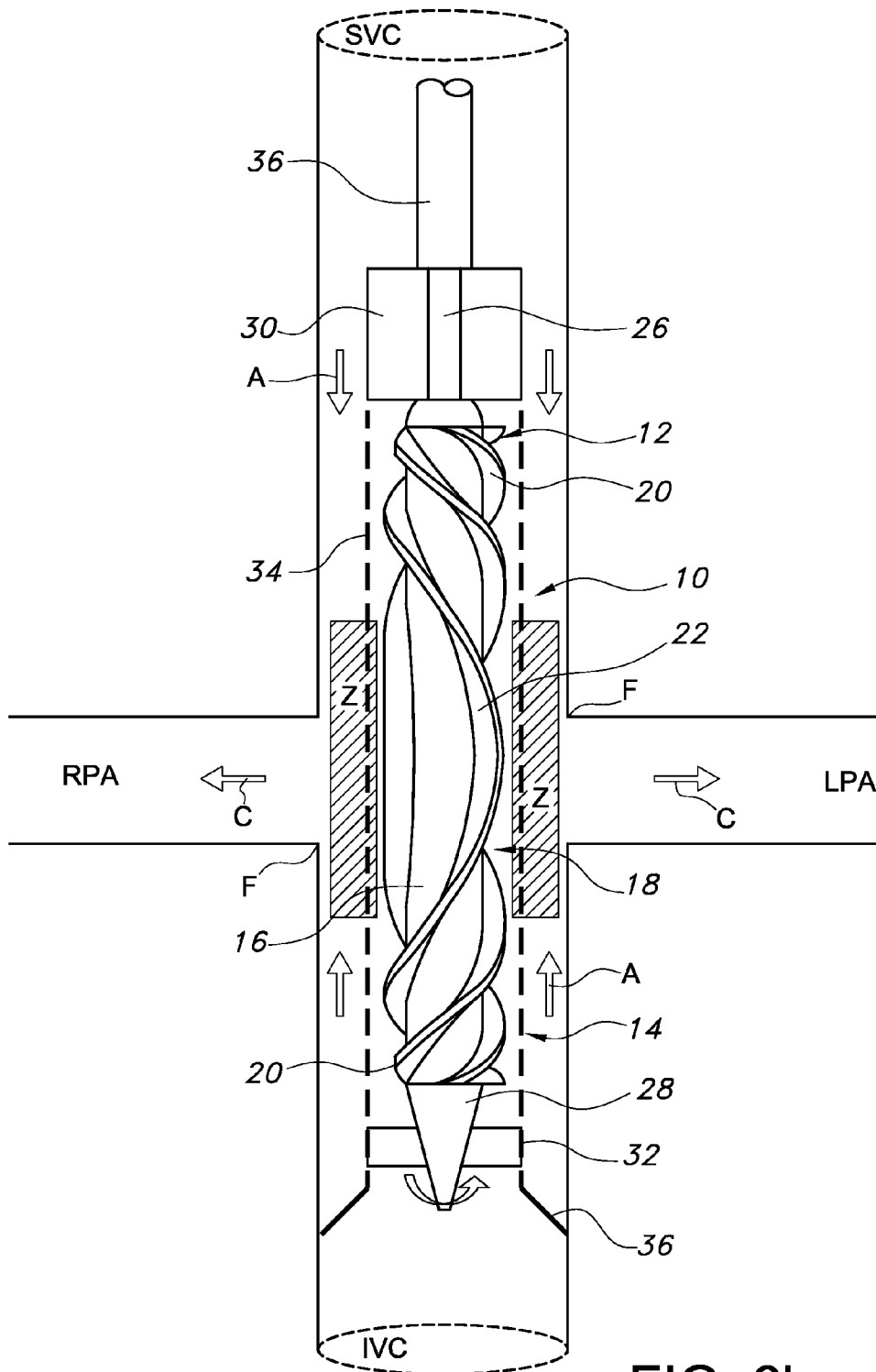


FIG. 6b

AXIAL-CENTRIFUGAL FLOW CATHETER PUMP FOR CAVOPULMONARY ASSISTANCE

TECHNICAL FIELD

The present invention relates generally to the field of medical devices. In particular, the invention relates to cardiac medical devices and systems for use in remediating or alleviating failing circulation subsequent to a Fontan procedure.

BACKGROUND OF THE INVENTION

The Fontan or Fontan/Kreutzer procedure is a palliative (not curative) surgical procedure used to ameliorate complex congenital heart defects, especially in the young. Exemplary heart defects addressed by the Fontan procedure include heart valve defects (tricuspid atresia, pulmonary atresia), abnormalities in pumping ability of the heart (hypoplastic left heart syndrome, hypoplastic right heart syndrome), and other complex congenital heart diseases where a bi-ventricular repair is not possible or contra-indicated (double inlet left ventricle, heterotaxy defects, double outlet right ventricle, etc.). The process was initially described as a surgical treatment for tricuspid atresia.

As a result of the Fontan procedure, a surgically created junction is provided between the superior and inferior vena cava and the pulmonary artery, and venous blood flow is diverted from the superior and inferior vena cava directly to the pulmonary artery, bypassing the right ventricle of the heart. Following the procedure, oxygen-poor blood from the upper and lower body flows through the lungs without being pumped by the heart. Rather, the blood flow into the lungs is driven only by central venous blood pressure. This corrects hypoxia, and leaves a single heart ventricle responsible only for supplying blood to the body.

However, disadvantages and post-surgical complications are associated with the Fontan procedure. In the short term, pleural effusions (fluid build-up around the lungs) can occur, requiring additional surgical interventions. In the long term, atrial scarring may be associated with atrial flutter and atrial fibrillation, also requiring additional surgical intervention. Other long-term risks may be associated with the procedure, such as protein-losing enteropathy and chronic renal insufficiency, although these latter risks are not yet fully quantified.

Also, a high central venous pressure is required to provide a satisfactory supply of blood to the lungs after the Fontan procedure. Immediately or even 2-5 years following the procedure, it is known that the surgically created Fontan circulation often fails due to that high venous pressure required to drive pulmonary circulation. Long term mortality following the Fontan procedure can be as high as 29.1%, characterized by catastrophic failure of circulation and death. The expected event-free survival rate following the Fontan procedure at one, ten, and twenty-five years following the procedure is 80.1%, 74.8%, and 53.6%, respectively. A bi-modal age distribution has been observed in failing Fontan circulation. In early post-operative cases of failing Fontan circulation, the Fontan connection must be surgically taken down. In later post-operative cases, often the only remedy is heart transplantation.

Because of the above complications, in cases of failing Fontan circulation cavopulmonary assistance is often indicated, to actively move blood from the superior/inferior vena cava into pulmonary circulation, to decrease the central venous pressure required to provide the needed flow of blood to the lungs, and to reverse the pathophysiology associated with failing Fontan circulation. Attempts have been made to

alleviate failing Fontan circulation by implanting a right ventricular assist device (RVAD). However, this requires a traumatic surgical intervention to implate the device, and also requires take-down of the Fontan connection to allow pump installation. Dual hemopumps have been evaluated to restore or assist failing Fontan circulation. However, in such cases using two hemopumps, two surgical site cannulations are required, which is unduly traumatic to a patient. Also, patient mobility is severely restricted when two pumps must be deployed by cannulation.

A number of smaller pumps have been evaluated, but most require two pumping mechanisms for deployment in the superior and inferior vena cava (above and below the surgically created Fontan connection) to move blood toward and into pulmonary circulation. Because of the dual pumps/dual cannulations required, such pumps cannot be made ambulatory, i.e. the patient must be substantially bedridden after deployment of the pumps. Single pump mechanisms have been evaluated. Such pumps can create the required flow of blood into the pulmonary artery, but are difficult to deploy and consistently maintain in position due to the need for precise placement at the Fontan anastomosis surgically created at the juncture of the superior/inferior vena cava and the pulmonary artery. Proper alignment of this type of pump at the pulmonary artery and retaining that proper alignment is difficult to impossible, even with patient sedation, and further because of the difficulting in maintaining proper positioning after deployment, such pumps cannot be made ambulatory. Still other single pump mechanisms considered require surgical creation of an offset between the superior and inferior vena cava to promote blood flow into the pulmonary artery, increasing surgical difficulty and resultant complications for the patient.

There is accordingly a need in the art for improvements to pumps for cavopulmonary assistance in the event of failing Fontan circulation. Such improved pumps should require only a single pump mechanism requiring only one cannulation, but should still create satisfactory blood flow from both the superior and inferior vena cava into the pulmonary artery. Moreover, the pump should be relatively simple to deploy at the surgically created Fontan connection site, should not require absolutely precise placement to provide proper pump operation and blood flow, and should allow for a degree of displacement after deployment without affecting proper pump operation and blood flow. Still more, the pump should be ambulatory, allowing patient mobility and improved comfort after the procedure.

SUMMARY OF THE INVENTION

In accordance with the above-identified need in the art, in one aspect the present disclosure provides an axial-centrifugal flow catheter pump for cavopulmonary assistance, including a rotor having elements providing both an axial fluid flow and a centrifugal fluid flow and a motor operatively connected to the rotor. The rotor includes a first terminal impeller configured to provide a centrifugal and axial fluid flow in a first direction, a second terminal impeller configured to provide a centrifugal and axial fluid flow in a second direction opposite to the first direction, and a central impeller configured to provide a predominantly centrifugal fluid flow. To provide the desired fluid flow patterns, the first and second terminal impellers each include blade arrangements configured to provide a centrifugal and axial fluid flow directed toward the rotor central impeller. The first and second terminal impeller blade arrangements may transition over the longitudinal axis of the rotor to define the central impeller blade arrangement,

or alternatively the first and second terminal impeller blade arrangements and the central blade arrangement may be separate.

In another aspect, a rotor as described above is provided for a two-stage axial-centrifugal flow catheter pump for cavopulmonary assistance.

In yet another aspect, a cavopulmonary assistance device is provided including an axial axial-centrifugal flow catheter pump as described above. The device includes a motor operatively connected to the rotor, a cable connected to the rotor and/or the motor, and a deployable anchor for securing the cavopulmonary assistance device to a blood vessel wall. The motor may be directly connected to the rotor, or may be remotely operatively connected to the rotor such as via the cable. The deployable anchor is configured to allow fluid flow therethrough when deployed. A protective enclosure allowing fluid flow therethrough surrounds at least the rotor to prevent damage to a blood vessel wall.

These and other embodiments, aspects, advantages, and features of the present invention will be set forth in the description which follows, and in part will become apparent to those of ordinary skill in the art by reference to the following description of the invention and referenced drawings or by practice of the invention. The aspects, advantages, and features of the invention are realized and attained by means of the instrumentalities, procedures, and combinations particularly pointed out in the appended claims. Various patent and non-patent citations are discussed herein. Unless otherwise indicated, any such citations are specifically incorporated by reference in their entirety into the present disclosure.

BRIEF DESCRIPTION OF THE DRAWINGS

The accompanying drawings incorporated in and forming a part of the specification, illustrate several aspects of the present invention, and together with the description serve to explain the principles of the invention. In the drawings:

FIG. 1 depicts a normal human heart;

FIG. 2 depicts the heart of FIG. 1 after completion of a Fontan procedure, showing the Fontan anastomosis placing the superior and inferior vena cava in fluid communication with the pulmonary artery;

FIG. 3 depicts an embodiment of a rotor for an axial-centrifugal flow pump;

FIGS. 4a, 4b, and 4c depict alternative embodiments of blade configurations for the impellers of the rotor of FIG. 3;

FIGS. 5a and 5b depict embodiments of axial-centrifugal flow pumps according to the present disclosure; and

FIGS. 6a and 6b depict placement of the axial-centrifugal flow pump of FIG. 5 at a site of a Fontan anastomosis, with FIG. 6a showing the device with an undeployed anchor and FIG. 6b showing the device with a deployed anchor to secure the device to the wall of the inferior vena cava.

DETAILED DESCRIPTION OF THE ILLUSTRATED EMBODIMENTS

In the following detailed description of the illustrated embodiments, reference is made to the accompanying drawings that form a part hereof, and in which is shown by way of illustration, specific embodiments in which the invention may be practiced. These embodiments are described in sufficient detail to enable those skilled in the art to practice the invention. Also, it is to be understood that other embodiments may be utilized and that process, reagent, software, and/or other changes may be made without departing from the scope of the present invention.

In the normal heart (see FIG. 1), there is no direct fluid communication between the superior vena cava (SVC), inferior vena cava (IVC), and the pulmonary artery (PA). As is known in the art and as summarized above, in the Fontan procedure venous blood flow is diverted from the SVC and IVC directly to the PA, bypassing the right ventricle of the heart. By the procedure, a surgically created junction (Fontan anastomosis F) is provided between the superior and inferior vena cava and the pulmonary artery to allow fluid communication between the vessels and directly into pulmonary circulation (see FIG. 2). As summarized above, this Fontan circulation is prone to failure, requiring additional intervention to reverse or ameliorate failing Fontan circulation and associated pathologies.

In one aspect, the present disclosure provides a rotor 10 (see FIG. 3) for an axial-centrifugal flow pump. The rotor 10 includes first and second terminal impellers 12, 14 and an elongated central shaft 16 supporting a central impeller 18. The first and second impellers 12, 14 are each configured to create a centrifugal and axial fluid flow when rotor 10 is rotated, specifically wherein the first and second impellers 12, 14 create axial fluid flows in opposed directions (see arrows A). In particular embodiments, the first and second impellers 12, 14 include at least one blade 20 disposed at an included angle of from about 10 to about 30 degrees relative to a longitudinal axis of the rotor 10 to provide the desired axial and centrifugal fluid flow.

The central impeller 18, on the other hand, includes at least one blade 22 disposed whereby rotation of rotor 10 creates a predominantly centrifugal fluid flow around central impeller 18 (see arrows B). In particular embodiments, the central impeller 18 includes at least one blade 22 disposed at an included angle of from about 80 to about 100 degrees relative to a longitudinal axis of the rotor 10 to provide the desired centrifugal fluid flow. In use, rotation of the rotor 10 will cause first and second impellers 12, 14 to promote a centrifugal and axial flow of fluid in the direction of central impeller 18, while central impeller 18 redirects that axial fluid flow into a primarily centrifugal fluid flow.

In the embodiment shown in FIG. 3, the blades 20, 22 are of the Archimedean screw type. In the depicted embodiment of FIG. 3, blades 20 of the first and second impellers 12, 14 transition over a longitudinal axis of the rotor 10 to define the blades 22 of the central impeller 18. However, a variety of blade configurations are contemplated for inclusion in the rotor 10 described above. As a non-limiting example, a propeller or screw type blade 20 is contemplated for use in first and second impellers 12, 14 (see FIG. 4a). Alternatively, first and second impellers 12, 14 may include a plurality of discrete blades 20 (see FIG. 4b); with the caveat that the blades 20 must be oriented such that a centrifugal and axial fluid flow is promoted as described above. As another alternative, an auger-type blade 20 may be used (see FIG. 4c). Similar arrangements are contemplated for use as blades 22 of central impeller 18, with the caveat that the blades 22 must be oriented such that a predominantly centrifugal fluid flow is promoted by the central impeller 18 as described above.

In another aspect (see FIG. 5a), the present disclosure provides an axial-centrifugal flow pump 24 incorporating the rotor 10 as described above, for use as a cavopulmonary assistance device (CPAD). The rotor 10 is provided with bearing arrangements 26, 28 at opposed ends thereof to allow rotation of rotor 10. A number of bearings are contemplated for use as bearings 26, 28, including without intending any limitation ball bearings, roller bearings, cone bearings, ball thrust bearings, roller thrust bearings, magnetic bearings, and the like.

A motor **30** is operatively connected to rotor **10** to drive rotation thereof. In the embodiment of FIG. **5**, the rotor **10** is held by bearings **26** in a micro motor **30**. A stator **32** is provided at the opposed end of rotor **10**, to support rotation of rotor **10** in conjunction with bearing **28**. In an embodiment, bearing **28** may be a cone bearing of substantially known design, supported by stator **32**. However, other designs are contemplated for bearings **26**, **28** as described above. A protective enclosure **34** is also provided, to prevent contact of the rotor **10** with, e.g., a blood vessel wall interior. A number of suitable enclosures **34** are contemplated, such as a cage made of wire or other suitable materials allowing blood flow there-through to prevent fluid flow occlusion or reduction and areas of stagnant blood flow. Such devices are known in the art. An expandable or deployable anchor **36** is included at a terminus of the pump **24**, whose function will be described in detail below. A cable **36** is provided at a terminus of the pump **24**, one function of which is to facilitate placement of the pump **34** at a desired location in a blood vessel. In combination, cable **36** and pump **24** define a catheter pump which provides both an axial and a centrifugal fluid flow as described above, in a compact, self-contained design promoting patient mobility after placement of the pump **24**.

The skilled artisan will appreciate that alternative configurations are possible and are contemplated herein. For example, rather than directly associating the motor **30** with the pump **24** as depicted in the embodiment of FIG. **5**, the motor **30** may be disposed remotely from the pump **24**, and operatively connected to the rotor **10** via cable **36** (see FIG. **5b**). A second stator **32** and bearing **26** arrangement may be included to stabilize the end of rotor **10** connected to cable **36**. In this embodiment, motor **30** may be positioned extracorporeally during use of pump **24**, facilitating maintenance and/or replacement thereof in case of failure.

Deployment and use of pump **24** such as in the event of failing Fontan circulation will now be described. As summarized above, the Fontan procedure results in a surgically created junction (Fontan anastomosis) between the superior and inferior vena cava and the pulmonary artery to allow fluid communication between the vessels (see FIG. **2**). To improve that failing Fontan circulation, pump **24** is inserted into, for example, the right jugular vein and therefrom into the superior vena cava and advanced using cable **36** and/or a suitable guidewire/deployment catheter or balloon dilation catheter arrangement (not shown) of known design. Advancement and proper placement of pump **24** may be monitored by any suitable imaging technology, such as X-ray fluoroscopy, radiography, intravascular ultrasound, etc., to ensure proper positioning of the pump **24**.

The pump **24** is advanced until the rotor **10** bridges the Fontan anastomosis F (see FIG. **6a**). As shown, first impeller **12** is positioned substantially in the superior vena cava (SVC), second impeller **14** is positioned substantially in the inferior vena cava (IVC), and central impeller **18** bridges the Fontan anastomosis F, i.e. the surgically created juncture between the SVC, IVC, right pulmonary artery (RPA), and left pulmonary artery (LPA). Once proper placement of the pump **24** is verified, the expandable or deployable anchor **36** is deployed to anchor the pump **24** to the IVC vessel wall and prevent undesired movement of the pump **24** (see FIG. **6b**). Typically, an anchor **36** is used which allows fluid flow there-through after deployment, to prevent occlusion or reduction of blood flow through the blood vessel and to prevent areas of stagnant blood flow after the anchor **36** is deployed.

On rotation of rotor **10**, as described above first and second impellers **12**, **14** created a centrifugal and axial fluid flow of blood in the direction of central impeller **18** (see arrows A). In

turn, as rotor **10** rotates, central impeller **18** creates a predominantly centrifugal fluid flow of blood substantially at the location of the Fontan anastomosis, accelerating blood spinning in this region of the superior and inferior vena cava and creating a high pressure zone in the region of the blood vessel extending between the first and second impellers **12**, **14** (see shaded area Z). This provides a delivery of blood at substantially right angles into the RPA and LPA (arrows C). By the pump **24** of the present disclosure, blood flow is promoted from the superior vena cava/inferior vena cava into the pulmonary circulation, eliminating the increased central venous pressure required to promote this type of blood flow as is typically associated with Fontan procedure.

A number of advantages are realized by the rotor **10**/axial-centrifugal flow pump **24** design of the present disclosure. For example, separation of the first and second impellers **12**, **14** by elongated shaft **16** allows for some movement of the rotor **10**/pump **24** within the superior vena cava and inferior vena cava after placement and deployment of anchor **36** without affecting the performance of pump **24** and without disrupting the blood flow created by pump **24** as described above. This eliminates the need for unduly precise placement at the site of a Fontan anastomosis associated with prior art pumps to promote the desired blood flow into pulmonary circulation, and also obviates the loss of performance of such prior art pumps if the pump is at all displaced during use. In turn, a compact, effective, and efficient pump **24** design is provided which, by its size and flexibility in placement, allows patient ambulation after the pump **24** is placed.

One of ordinary skill in the art will recognize that additional embodiments of the invention are also possible without departing from the teachings herein. This detailed description, and particularly the specific details of the exemplary embodiments, is given primarily for clarity of understanding, and no unnecessary limitations are to be imported, for modifications will become obvious to those skilled in the art upon reading this disclosure and may be made without departing from the spirit or scope of the invention. Relatively apparent modifications, of course, include combining the various features of one or more figures or examples with the features of one or more of other figures or examples.

What is claimed is:

1. An axial-centrifugal flow catheter pump for cavopulmonary assistance, comprising:

a rotor providing both an axial fluid flow and a centrifugal fluid flow; and

a motor operatively connected to the rotor;

the rotor including a first terminal impeller configured to provide a centrifugal and axial fluid flow in a first direction, a second terminal impeller configured to provide a centrifugal and axial fluid flow in a second direction opposite to the first direction, and a central impeller configured to provide a predominantly centrifugal fluid flow.

2. The axial-centrifugal flow catheter pump of claim 1, wherein the first and second terminal impellers each include blade arrangements configured to provide a centrifugal and axial fluid flow directed toward the rotor central impeller.

3. The axial-centrifugal flow catheter pump of claim 2, wherein the first and second terminal impeller blade arrangements include at least one blade oriented at an included angle of from 10 to 30 degrees relative to a longitudinal axis of the rotor.

4. The axial-centrifugal flow catheter pump of claim 1, wherein the central impeller includes a blade arrangement having at least one blade oriented at an included angle of from 80 to 100 degrees relative to a longitudinal axis of the rotor.

7

5. The axial-centrifugal flow catheter pump of claim 4, wherein the first and second terminal impeller blade arrangements transition over the longitudinal axis of the rotor to define the central impeller blade arrangement.

6. A rotor for a two-stage axial-centrifugal flow catheter pump for cavopulmonary assistance, comprising: 5
 a first terminal impeller configured to provide a centrifugal and axial fluid flow in a first direction;
 a second terminal impeller configured to provide a centrifugal and axial fluid flow in a second direction opposite to the first direction; and 10
 a central impeller configured to provide a predominantly centrifugal fluid flow.

7. The rotor of claim 6, wherein the first and second terminal impellers each include blade arrangements configured to provide a centrifugal and axial fluid flow directed toward the rotor central impeller. 15

8. The rotor of claim 7, wherein the first and second terminal impeller blade arrangements include at least one blade oriented at an included angle of from 10 to 30 degrees relative to a longitudinal axis of the rotor. 20

9. The rotor of claim 6, wherein the central impeller includes a blade arrangement configured to provide a predominantly centrifugal fluid flow and having at least one blade oriented at an included angle of from 80 to 100 degrees relative to a longitudinal axis of the rotor. 25

10. The rotor of claim 9, wherein the first and second terminal impeller blade arrangements transition over the longitudinal axis of the rotor to define the central impeller blade arrangement. 30

11. A cavopulmonary assistance device, comprising:
 an axial-centrifugal flow catheter pump comprising a rotor providing both an axial fluid flow and a centrifugal fluid flow and a motor operatively connected to the rotor; 35
 a cable connected to the rotor and/or the motor; and
 a deployable anchor for securing the cavopulmonary assistance device to a blood vessel wall;
 the rotor including a first terminal impeller configured to provide a centrifugal and axial fluid flow in a first direc-

8

tion, a second terminal impeller configured to provide a centrifugal and axial fluid flow in a second direction opposite to the first direction, and a central impeller configured to provide a predominantly centrifugal fluid flow.

12. The cavopulmonary assistance device of claim 11, wherein the first and second terminal impellers each include blade arrangements configured to provide a centrifugal and axial fluid flow directed toward the rotor central impeller.

13. The cavopulmonary assistance device of claim 12, wherein the first and second terminal impeller blade arrangements include at least one blade oriented at an included angle of from 10 to 30 degrees relative to a longitudinal axis of the rotor.

14. The cavopulmonary assistance device of claim 11, wherein the central impeller includes a blade arrangement having at least one blade oriented at an included angle of from 80 to 100 degrees relative to a longitudinal axis of the rotor.

15. The cavopulmonary assistance device of claim 14, wherein the first and second terminal impeller blade arrangements transition over the longitudinal axis of the rotor to define the central impeller blade arrangement.

16. The cavopulmonary assistance device of claim 11, wherein the motor is directly connected to the rotor.

17. The cavopulmonary assistance device of claim 11, wherein the motor is remotely operatively connected to the rotor.

18. The cavopulmonary assistance device of claim 11, wherein the deployable anchor is configured to allow passage of fluid therethrough when deployed. 30

19. The cavopulmonary assistance device of claim 11, further including a bearing arrangement disposed at opposed ends of the rotor and a stator disposed at an end of the rotor opposed to the motor.

20. The cavopulmonary assistance device of claim 11, further including a protective enclosure surrounding at least the rotor, the protective enclosure being configured to allow fluid flow therethrough.

* * * * *