



University of Kentucky
UKnowledge

Physiology Faculty Publications

Physiology

11-22-2013

Molecular Events in the Cell Types of the Olfactory Epithelium during Adult Neurogenesis

Paula M. Heron

University of Kentucky, pmhero2@uky.edu

Arnold J. Stromberg

University of Kentucky, astro11@email.uky.edu

Patrick Breheny

University of Iowa

Timothy S. McClintock

University of Kentucky, mcclint@uky.edu

Right click to open a feedback form in a new tab to let us know how this document benefits you.

Follow this and additional works at: https://uknowledge.uky.edu/physiology_facpub

 Part of the [Physiology Commons](#)

Repository Citation

Heron, Paula M.; Stromberg, Arnold J.; Breheny, Patrick; and McClintock, Timothy S., "Molecular Events in the Cell Types of the Olfactory Epithelium during Adult Neurogenesis" (2013). *Physiology Faculty Publications*. 18.
https://uknowledge.uky.edu/physiology_facpub/18

This Article is brought to you for free and open access by the Physiology at UKnowledge. It has been accepted for inclusion in Physiology Faculty Publications by an authorized administrator of UKnowledge. For more information, please contact UKnowledge@lsv.uky.edu.

Molecular Events in the Cell Types of the Olfactory Epithelium during Adult Neurogenesis**Notes/Citation Information**

Published in *Molecular Brain*, v. 6, 49, p. 1-14.

© 2013 Heron et al.; licensee BioMed Central Ltd.

This is an Open Access article distributed under the terms of the Creative Commons Attribution License (<http://creativecommons.org/licenses/by/2.0>), which permits unrestricted use, distribution, and reproduction in any medium, provided the original work is properly cited. The Creative Commons Public Domain Dedication waiver (<http://creativecommons.org/publicdomain/zero/1.0/>) applies to the data made available in this article, unless otherwise stated.

Digital Object Identifier (DOI)

<http://dx.doi.org/10.1186/1756-6606-6-49>



RESEARCH

Open Access

Molecular events in the cell types of the olfactory epithelium during adult neurogenesis

Paula M Heron¹, Arnold J Stromberg², Patrick Breheny³ and Timothy S McClintock^{1*}

Abstract

Background: Adult neurogenesis, fundamental for cellular homeostasis in the mammalian olfactory epithelium, requires major shifts in gene expression to produce mature olfactory sensory neurons (OSNs) from multipotent progenitor cells. To understand these dynamic events requires identifying not only the genes involved but also the cell types that express each gene. Only then can the interrelationships of the encoded proteins reveal the sequences of molecular events that control the plasticity of the adult olfactory epithelium.

Results: Of 4,057 differentially abundant mRNAs at 5 days after lesion-induced OSN replacement in adult mice, 2,334 were decreased mRNAs expressed by mature OSNs. Of the 1,723 increased mRNAs, many were expressed by cell types other than OSNs and encoded proteins involved in cell proliferation and transcriptional regulation, consistent with increased basal cell proliferation. Others encoded fatty acid metabolism and lysosomal proteins expressed by infiltrating macrophages that help scavenge debris from the apoptosis of mature OSNs. The mRNAs of immature OSNs behaved dichotomously, increasing if they supported early events in OSN differentiation (axon initiation, vesicular trafficking, cytoskeletal organization and focal adhesions) but decreasing if they supported homeostatic processes that carry over into mature OSNs (energy production, axon maintenance and protein catabolism). The complexity of shifts in gene expression responsible for converting basal cells into neurons was evident in the increased abundance of 203 transcriptional regulators expressed by basal cells and immature OSNs.

Conclusions: Many of the molecular changes evoked during adult neurogenesis can now be ascribed to specific cellular events in the OSN cell lineage, thereby defining new stages in the development of these neurons. Most notably, the patterns of gene expression in immature OSNs changed in a characteristic fashion as these neurons differentiated. Initial patterns were consistent with the transition into a neuronal morphology (neuritogenesis) and later patterns with neuronal homeostasis. Overall, gene expression patterns during adult olfactory neurogenesis showed substantial similarity to those of embryonic brain.

Keywords: Smell, Development, Differentiation, Neuritogenesis, Immature neuron, Transcription factor, Stem cell, Microarray, Genomics

Introduction

The evolutionary advantages of maintaining neurogenesis into adulthood seem substantial given the potential for repairing damage and forming memories, yet the mammalian nervous system has significant capacity for adult neurogenesis in only three locations. It contributes to learning and memory in the olfactory bulb and hippocampus [1-5] and is used to replace olfactory sensory neurons (OSNs) in the olfactory epithelium where the

neurons are more exposed to external stressors than anywhere else in the nervous system.

Consistent with the conclusion that damage drives OSN replacement, the proliferation of new OSNs is accelerated by damage and slowed by protective manipulations [6,7], events that are controlled by local signals impinging on the progenitor cells [8-16]. Analogous to the transition of embryonic neuroepithelial cells into astroglial-like adult neural stem cells located in the subventricular zone of the brain [17], these local progenitors derive from embryonic neuroepithelial cells that seed a layer, several cells thick, of basal cells located just above the basal lamina of the olfactory epithelium. Multipotent

* Correspondence: mcclint@uky.edu

¹Department of Physiology, University of Kentucky, 800 Rose St, Lexington, KY 40536-0298, USA

Full list of author information is available at the end of the article

progenitor cells are present among both of the morphologically distinct classes of basal cells, horizontal basal cells and globose basal cells [11,15,18-23]. They give rise to neurally fated progenitor cells, marked first by expression of *Ascl1* (*Mash1*) and then *Neurog1* (*Ngn1*), which differentiate into immature OSNs. Differentiation of mature OSNs climaxes with the maturation of synapses at glomeruli in the olfactory bulb and the elaboration of cilia from the dendritic knob at the opposite pole of the neuron [24-27].

The several distinct cell types of the OSN cell lineage imply that a series of changes in gene expression programs must occur in order to produce differentiated OSNs. The molecular changes that have been described thus far [27-29] fall short of the complete characterization necessary to understand the networks of proteins that determine cellular functions [30]. In addition, the cellular origins of most changes are unknown, a common shortcoming of expression profiling analyses of dynamic processes in complex tissues. However, this can now be overcome because the vast majority of genes expressed by mature OSNs, immature OSNs, and the summed population of the other cell types in the olfactory epithelium are known [31,32]. We forced synchronous replacement of mature OSNs and characterized the molecular response, ascribing most of the molecular events to specific cell types, and in the case of immature OSNs, even to early or late stages of their differentiation.

Results and discussion

24% of olfactory epithelium mRNAs respond to bulbectomy

We caused selective loss of mature OSNs by unilateral bulbectomy, which severs all OSN axons on that side of the nasal cavity and evokes a well-characterized progression of cellular events [15,27,33-36]. Mature OSNs suffer apoptosis within three days. Macrophages infiltrate in response to OSN death, peaking around 3 days and persisting for several days thereafter. Proliferation of progenitor cells with a neural fate peaks at five days, and new mature OSNs begin to increase in number only after 10 days or more. We showed previously that the most informative point in the progression of changes after bulbectomy is at 5 days when progenitor cell proliferation is at its zenith, mature OSNs are at their nadir and the population of immature OSNs should be dominated by newly formed immature OSNs [27]. Therefore, we profiled changes in mRNA abundance at this time point. Comparing olfactory epithelia ipsilateral and contralateral to bulbectomy, we detected transcripts from a total of 16,632 genes. Of these, 4,057 were significantly affected, with 1,723 increasing and 2,334 decreasing (Additional file 1: Table S1).

Recent data on the expression of most genes in OSNs make it possible to identify the cellular origins of many of these significantly affected mRNAs [31]. These measures come in two forms, the probabilities of expression specific to cell type categories ($P_{(sp)}$) and the probabilities of expression in each cell type category ($P_{(in)}$), irrespective of expression in other categories. The cell type categories are four: (1) mature OSNs, (2) immature OSNs, (3) both mature and immature OSNs (Shared) and (4) the summed population of all non-OSN cell types (Other). $P_{(sp)}$ and $P_{(in)}$ values are available for 2,533 of the significantly different mRNAs. They revealed that decreased and increased mRNAs had distinctly different cellular origins (Figure 1). Consistent with this evidence that the decreased mRNAs belonged to mature OSNs, functional bioinformatics (Table 1) revealed overrepresentation of mRNAs encoding proteins involved in several processes known to be restricted to mature OSNs, such as olfactory transduction, the elaboration of cilia and the final maturation of synapses. In contrast, overrepresented functional categories related to processes that occur in non-OSN cell types and immature OSNs such as development, cell proliferation, and transcriptional regulation were found among the mRNAs that increased (Table 2).

Mature OSN transcripts decrease

The loss of mature OSNs after bulbectomy predicts that these cells express most mRNAs that decreased. Indeed, 94% of decreased mRNAs had a probability of expression in mature OSNs ($P_{(in)}$ mature OSN) of > 0.5 . The average $P_{(in)}$ mature OSNs was 0.87 for decreased mRNAs. When we used $P_{(sp)}$ mature OSN values > 0.5 to identify mature OSN-specific mRNAs, we found that nearly all were decreased mRNAs (Figure 2A). Existing *in situ* hybridization data [31] included 58 mature OSN mRNAs among the significantly decreased mRNAs (Figure 2A). As expected, 44 of these mRNAs (76%) were expressed primarily in mature OSNs. The remaining 14 showed some expression in immature OSNs along with their expression in mature OSNs.

Nine mRNAs had $P_{(sp)}$ values predicting expression in mature OSNs yet they increased rather than decreased after bulbectomy (Figure 2A). These mRNAs represented only 2.3% of the significantly affected mRNAs with $P_{(sp)}$ mature OSN values > 0.5 , well within the error rate for $P_{(sp)}$ cell type assignments and therefore likely to be errors of this type. As expected, *in situ* hybridization for several of these mRNAs consistently revealed expression that was not restricted to mature OSNs but was instead primarily in other cell types (Additional file 2). In contrast, new *in situ* hybridization for 12 mRNAs with $P_{(sp)}$ values predicting expression in mature OSNs that

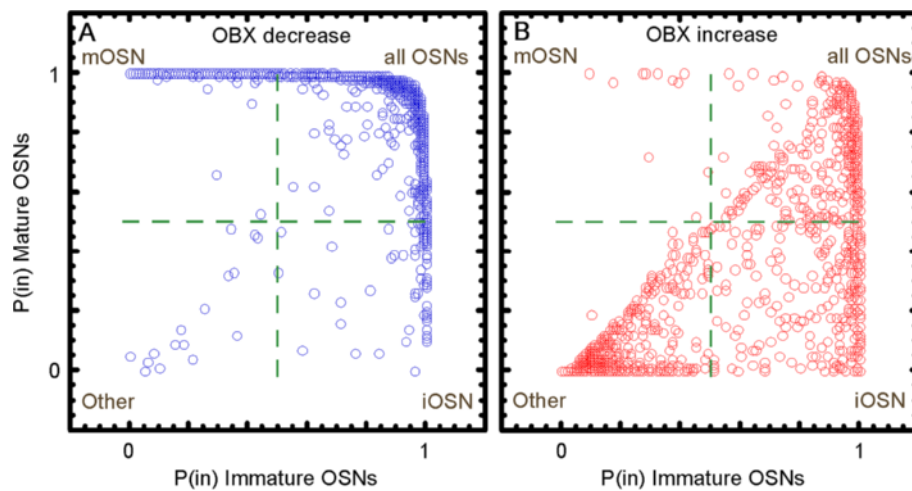


Figure 1 Correspondence of molecular and cellular changes in the olfactory epithelium at 5 days after bulbectomy (OBX). These plots separate gene expression patterns into four quadrants, each representing distinct cell type categories as labeled. **A.** Transcripts that decreased after OBX tended to be expressed in mature OSNs (upper quadrants). **B.** Transcripts that increased after OBX tended to be expressed by immature OSNs (right quadrants) or by cell types other than OSNs (lower left quadrant).

decreased after bulbectomy all showed expression in mature OSNs: *Arl3*, *Atrn*, *Bnip3*, *Cox5a*, *Fam179b*, *Fnbp1*, *Grip1*, *Ppme1*, *Ift80*, *Rab6b*, *Pafah1b1*, and *Tshz2* (Additional file 3).

Increased mRNAs identify active processes in non-OSN cell types

As expected, significantly affected mRNAs expressed primarily by the non-OSN cell types in the olfactory epithelium ($P_{(sp)} \text{ Other} > 0.5$) were nearly all increased, rather than decreased, after bulbectomy (Figure 2D). Existing *in situ* hybridization data for 28 mRNAs in this category revealed that all but one were expressed primarily by cell types that survive bulbectomy (anything other than mature OSNs): 16 in basal cells, 6 in sustentacular cells, 1 in scattered cells that may be infiltrating macrophages, 2 in immature OSNs and another 2 in a combination of basal cells, sustentacular cells, and

immature OSNs. These data confirmed that mRNAs with $P_{(sp)} \text{ Other} > 0.5$ that increased after bulbectomy were indeed expressed primarily in cell types other than mature OSNs.

Increased mRNA abundance after the loss of mature OSNs, which constitute about half the cells in the adult olfactory epithelium, might result merely from increased prevalence of the remaining cell types. This is especially true for mRNAs expressed by infiltrating macrophages,

Table 2 Overrepresented biological processes among mRNAs that increased after bulbectomy

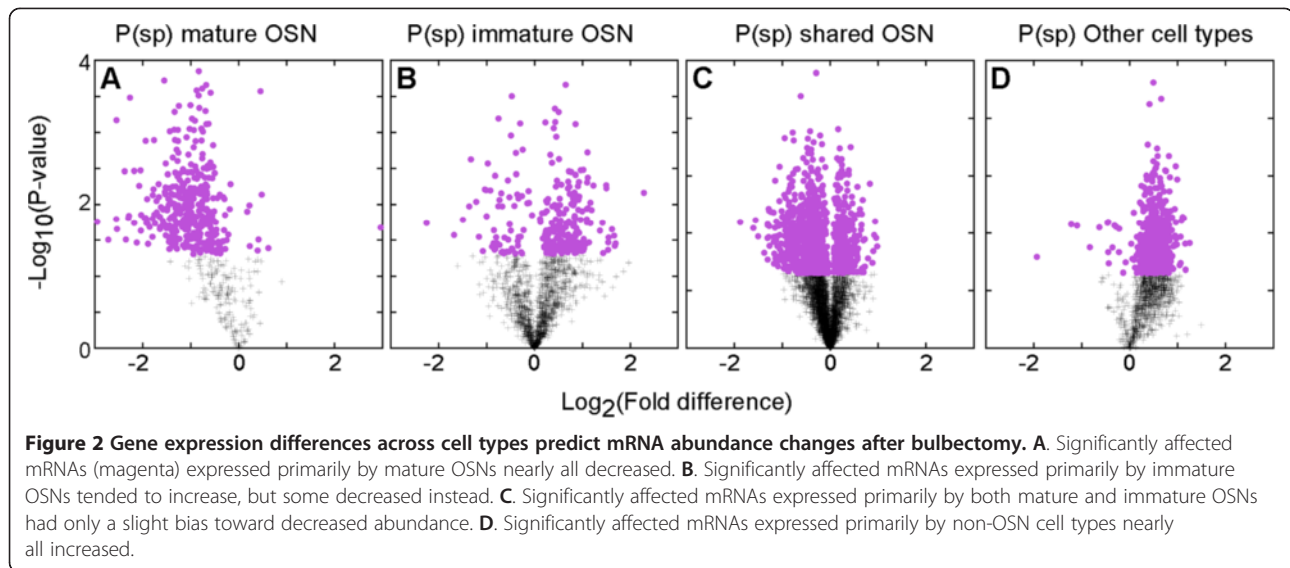
Gene ontology term	# of Genes
Cell cycle, DNA replication, mitosis (27)	652
Regulation of transcription (14)	223
Protein phosphorylation (38)	635
Apoptosis (12)	128
Fatty acid metabolism (1)	41
Protein interaction domains (11)	118
Development (28)	229
Cell motion and migration (8)	98
Cytoskeletal organization (13)	167
Focal adhesion (3)	16
DNA binding (3)	385
Lipid metabolism (2)	16
Immune response (1)	33
Extracellular matrix (3)	45
Regulation of cell size (2)	29
FERM domain proteins (6)	14

Table 1 Overrepresented biological processes among mRNAs that decreased after bulbectomy

Gene ontology term	# of Genes
Olfactory transduction (3)	610
Odorant receptor (3)	591
Trace amine-associated receptor (1)	10
Olfaction (3)	586
Neural functions (2)	579
Synaptic transmission (2)	50
Cilia (1)	13
Ion channels (2)	33

Ordered by strength of over-representation. Parentheses, number of significant categories combined under one heading.

Ordered by strength of over-representation. Parentheses, number of significant categories combined under one heading.



whose abundance can increase many-fold after bulbectomy [36]. However, for mRNAs expressed by the permanently resident cell types in the epithelium, the evidence suggests that increased cellular prevalence explains only a small fraction of the increased mRNAs. For example, of 10 documented markers of sustentacular cells and Bowman's glands [31,32,37-43], only 2 were increased (Epas1 and Aqp5) while the other 8 were unaffected (Cbr2, Tyro3, Slc2a1, Slc2a3, Slc16a7, Aldh1a1, Cyp2a4/5 and Cyp2g1). These differences were not correlated with expression in neighboring respiratory epithelium (e.g., Epas1 and Cbr2 are expressed in respiratory epithelium, but Aqp5 is not), so contamination from respiratory epithelium did not obscure the effects of changes in cell type prevalence on mRNA abundance changes. Consistent with this interpretation, the canonical marker used to distinguish respiratory epithelium from olfactory epithelium, Reg3g [43], was not significantly increased after bulbectomy. Overall, only 39% of the mRNAs with $P_{(sp)} \text{ Other} > 0.5$ (552 of 1,398) were significantly affected by bulbectomy. These findings argue that increased prevalence of several cell types due to the loss of mature OSNs may not be the sole factor driving increased mRNA abundance. We hypothesize that increased transcriptional activation of the genes encoding proteins most critical for olfactory neurogenesis also contributes so that many of the largest and most consistent increases derive from genes actively responding to bulbectomy with increased transcription in the surviving cell types.

Biological process categories fundamental to olfactory neurogenesis should dominate the results of functional bioinformatics analysis of increased mRNAs expressed primarily in non-OSN cell types. Indeed, when done using the mRNAs with $P_{(sp)} \text{ Other}$ values > 0.5 this

analysis revealed that most overrepresented processes were associated with sensory organ development, cell proliferation, regulation of transcription and associated signaling events (Table 3). These tended to be related categories that derive from partially overlapping sets of mRNAs. For example, the sensory organ development category derived largely from 16 transcription factors important for development and differentiation, including several previously shown to be involved in olfactory neurogenesis, such as Neurog1, Six1, Pax6, Foxg1, and Gli3 [44-48]. Even the lysosome category represented events important for adult olfactory neurogenesis because it consisted primarily of genes expressed strongly by macrophages (e.g., Cd68, cathepsins, hexosaminidases) that infiltrate the epithelium [49-52]. These macrophages help clear debris from dead OSNs for several days after bulbectomy and contribute to a local environment that supports proliferation of new OSNs [36,53]. In addition, because much of the material taken up by phagocytosis is lipid membrane, we reasoned that the fatty acid metabolic processes category, which contained

Table 3 Overrepresented biological processes among non-OSN cell type transcripts that increased after bulbectomy

Gene ontology term	# of Genes
Cell cycle, cell division, mitosis, DNA replication (40)	68
Positive regulation of transcription (7)	36
Kinases; signaling, cell cycle control & transcription (18)	78
Lysosomes (4)	18
Sensory organ development (7)	21
Fatty acid metabolic processes (2)	21

Ordered by strength of over-representation. Parentheses, number of significant categories combined under one heading.

enzymes involved in the β -oxidation of fatty acids and synthesis or recycling of lipid intermediates (Elovl5, Elovl6, Gpm, Acsl1, Acsl5, Acot11, Pecn, Acadl, Cpt1a, Crot, Hadh and Lypla1), would also represent genes expressed primarily by macrophages. We did in situ hybridization for 12 of the mRNAs found in these two categories, predicting that they would show patterns of expression modeled by the macrophage marker, Cd68 (Figure 3A,B). Labeled cells were scattered around the olfactory epithelium; and even more prominent was the increased labeling of cells in the olfactory nerve bundles ipsilateral to unilateral bulbectomy (Figure 3C-X). This pattern is characteristic of the locations of Cd68-positive macrophages.

The overrepresented biological processes among increased non-OSN mRNAs (Table 3) were a subset of the overrepresented biological processes among the set of all increased mRNAs (Table 2). Not surprisingly, the non-overlapping categories between these two lists were due either to mRNAs expressed primarily by immature OSNs (Table 4) or to biological processes that arose from combinations of immature OSN mRNAs and non-OSN mRNAs.

As with the prediction of mature OSN mRNAs, there is an error rate in the prediction of genes expressed in non-OSN cell types (4%) that could account for the 15 mRNAs with $P_{(sp)}$ Other > 0.5 that decreased, rather than increased (Figure 2D). As predicted by their response to bulbectomy, in situ hybridization for several of these mRNAs consistently revealed disagreement with $P_{(sp)}$ values and expression primarily in the OSN layers of the olfactory epithelium (Additional file 4).

There are some mRNAs expressed by non-OSN cell types whose repressive actions on the OSN cell lineage argue that they might decrease, rather than increase, during induced neurogenesis. For example, Trp63 promotes self-renewal of horizontal basal cells at the expense of proliferation of daughter cells that can differentiate into other cell types [54]. In situations where horizontal basal cells are activated to provide daughter cells for OSN replacement, Trp63 should decrease. However, we detected an increase in Trp63 mRNA abundance after bulbectomy ($p = 0.0012$; fold difference = 1.283). In situ hybridization for Trp63 was consistent with these data, showing a chain of labeled horizontal basal cells throughout the olfactory epithelium both ipsilateral and contralateral to bulbectomy (Figure 4). The presence of as much or more Trp63 mRNA in horizontal basal cells ipsilateral to unilateral bulbectomy as was present contralateral to the lesion eliminates the alternative explanation that Trp63 expression in some other cell type masked a decrease of Trp63 in horizontal basal cells. This is consistent with previous evidence that horizontal basal cells do not contribute much to OSN replacement after bulbectomy when only OSNs are damaged, but instead are

activated when both OSNs and sustentacular cells are lesioned [21,23].

Early and late events during immature OSN differentiation

Immature OSNs are increasing in prevalence (and perhaps undergoing accelerated differentiation) at 5 days after bulbectomy, so the majority of mRNAs expressed primarily by immature OSNs increased (Figure 2B). However, some mRNAs expressed primarily in immature OSNs decreased instead. Existing in situ hybridization data indicate that these differences are not simply errors in cell type assignment. Are these increases and decreases instead merely stochastic variation? If they were, then these two groups of mRNAs would have indistinguishable patterns of $P_{(sp)}$ and $P_{(in)}$ values and functional bioinformatics would neither differ nor even reveal statistically overrepresented biological processes. Neither of these predictions was correct, however. Not only were over-represented categories detected, they differed in ways that correlate with the trajectory of OSN differentiation (Tables 4 and 5). For example, nascent OSNs rapidly extend an apical dendrite and a basal axon that enters the olfactory nerve bundles in the lamina propria even before these cells detectably express the canonical immature OSN marker, Gap43 [55]. Neurite growth not only requires increased trafficking of membranes and a new cytoskeletal organization to support the neurites, but neurite extension in other types of neurons also typically involves focal adhesion proteins [56,57]. The biological processes associated with the immature OSN mRNAs that increased after bulbectomy are therefore linked to neurite growth. Examples of the underlying mRNAs already known to encode proteins important for neurite growth are Ablim1, Nrcam, Sptbn, Tln1, Vcl, Fyn, Rab13 and Itgb1 [58-67].

In contrast, the functional relationships among the immature OSN mRNAs that decreased were more closely associated with the other end of the lifespan of immature OSNs, especially processes that carry over into mature OSNs (Table 5). For example, increased energy production is a function shared by mature and immature OSNs [31], consistent with the overrepresentation of the mitochondrion category. Similarly, the axon category included several mRNAs encoding proteins important for axonal growth that are abundantly expressed in immature OSNs but also continue to be expressed in mature OSNs, such as Ncam1, Ncam2, Crmp1, Dpysl2, Mapk8ip1 [31,55]. The protein catabolism category includes 27 mRNAs that encode ubiquitin ligases, ubiquitin proteases, or proteins that support ubiquitination in other ways; all functions that are likely to be required in both mature and immature OSNs.

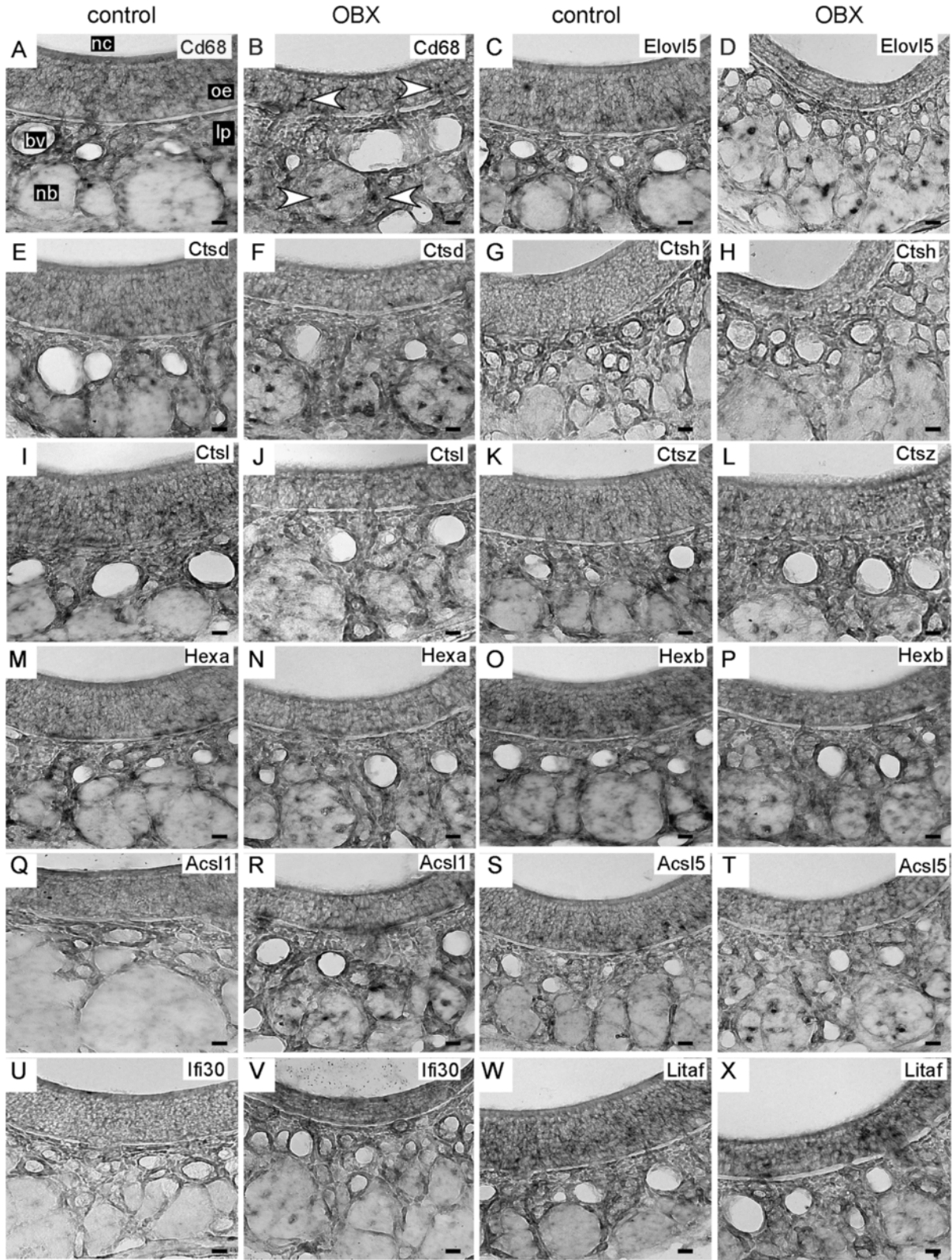


Figure 3 (See legend on next page.)

(See figure on previous page.)

Figure 3 In situ hybridization for the macrophage marker Cd68 (A,B) and a set of 11 genes predicted to be expressed in macrophages (C – X) in tissue sections of olfactory epithelium ipsilateral to olfactory bulbectomy (OBX) and contralateral to OBX (control). Arrows in B mark examples of macrophages labeled by Cd68. Bv, blood vessel; lp, lamina propria; nb, nerve bundle; nc, nasal cavity; oe, olfactory epithelium. Scale bars, 20 μ m.

These biases in expression toward either end of the differentiation of immature OSNs were further supported by the distributions of $P_{(sp)}$ and $P_{(in)}$ values, which differed between immature OSN mRNAs that increased versus decreased (Figure 5 and Table 6). Increased immature OSN mRNAs had $P_{(sp)}$ and $P_{(in)}$ value distributions biased toward the Other cell type category, the category that contains the basal cells that are the direct progenitors of the immature OSNs. Decreased immature OSN mRNAs showed the opposite trend, a bias toward mature OSNs and lower probabilities of being specific to immature OSNs. Taken together, these data indicate that the dichotomous behavior of immature OSN mRNAs following bulbectomy was driven by whether the expression of these mRNAs initiates early or late in OSN differentiation, and by whether expression carries over into mature OSNs. In situ hybridization data exists for 5 of the immature OSNs transcripts that decreased (Mapk8ip1, Crmp1, Dpysl2, Emx2, Palm) and they are consistent with this interpretation. They all show detectable expression in mature OSNs along with their strong expression in immature OSNs [31]. Such mRNAs can still show an overall decrease in abundance because mature OSNs are several-fold more abundant than immature OSNs in the adult olfactory epithelium. This fact is a likely explanation for immature OSN mRNAs that decreased after bulbectomy, especially for genes whose expression begins late during the differentiation of immature OSNs. However, we cannot rule out alternatives such as the possibility that the absence of mature OSNs after bulbectomy causes immature OSNs to actively reduce expression of some of their genes to facilitate differentiation or the related idea that the onset of expression of these genes is delayed after bulbectomy.

Table 4 Overrepresented biological processes among immature OSN RNAs that increased after bulbectomy

Gene ontology term	# of Genes
Focal adhesion (5)	11
ER, Golgi & vesicular trafficking (25)	131
Kinases & nucleotide binding (17)	88
Regulation of cytoskeletal organization (6)	24

Ordered by strength of over-representation. Parentheses, number of significant categories combined under one heading.

Many of the immature OSN mRNAs defined by $P_{(in)}$ immature OSN > 0.5 were included in the set of mRNAs shared by mature and immature OSNs, defined here as $P_{(sp)}$ Shared > 0.5. Not surprisingly, these shared mRNAs also fell into two groups differentially affected by bulbectomy (Figure 2C). This is possible because even though they are expressed by both mature and immature OSNs, many of these mRNAs have visible differences in the amount of in situ hybridization signal, arguing that they are differentially abundant in mature or immature OSNs [31]. Just as with immature OSN mRNAs, these differences were captured quantitatively in the $P_{(sp)}$ and $P_{(in)}$ values. Indeed, shared OSN mRNAs differentially

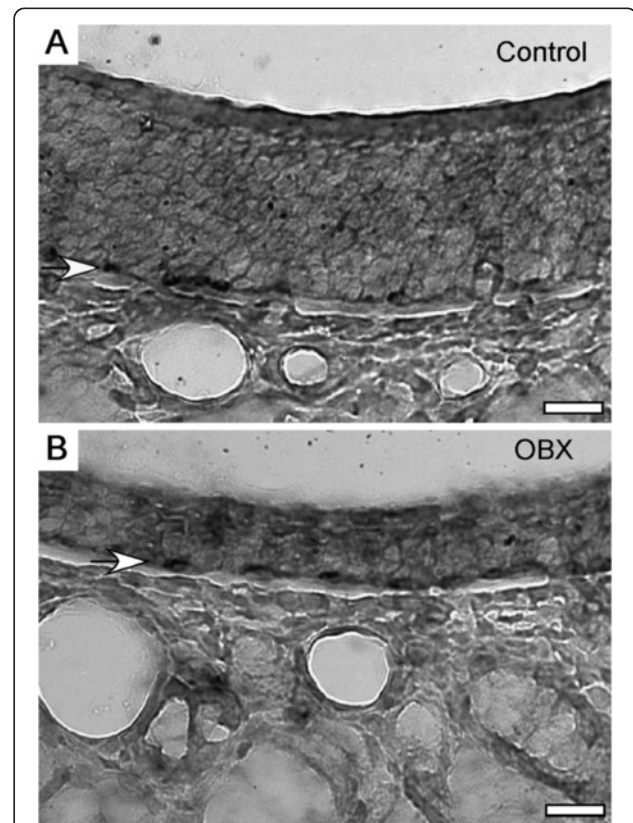


Figure 4 Trp63 did not decrease in horizontal basal cells after bulbectomy. **A.** Trp63 in situ hybridization signal in horizontal basal cells (arrow) on control (contralateral) side. **B.** Trp63 in situ hybridization signal in horizontal basal cells (arrow) ipsilateral to bulbectomy. Images from the dorsal recesses of the same tissue section. Scale bars, 25 μ m.

Table 5 Overrepresented biological processes among immature OSN RNAs that decreased after bullectomy

Gene ontology term	# of Genes
Protein catabolism (8)	37
Membrane coat, lysosomal sorting vesicles (4)	9
Axon (3)	19
Mitochondrion (1)	60

Ordered by strength of over-representation. Parentheses, number of significant categories combined under one heading.

sensitive to bullectomy had distinct distributions of $P_{(sp)}$ and $P_{(in)}$ values (Table 7). Shared OSN mRNAs that increased had a similar bias toward expression in the Other cell type category while shared OSN mRNAs that decreased had a bias toward mature OSNs.

Transcription factors and OSN differentiation

Transcription factors expressed in basal cells or immature OSNs should play critical roles in the shifts in gene expression programs that drive progression through the OSN cell lineage. Combining these new data with our previous study of the genomics of adult olfactory neurogenesis [27], we have detected a total of 203

transcription factor mRNAs that increased 5 – 7 days after bullectomy when basal cell proliferation is peaking (Additional file 5). $P_{(sp)}$ and $P_{(in)}$ values predict that nearly all of these are expressed in cell types other than OSNs. Indeed, only four of them have their highest $P_{(in)}$ values in the immature OSN category. Given the expectation that adult neurogenesis recapitulates the primary neurogenesis that occurs when the embryonic olfactory epithelium first forms, we were not surprised to find increased abundance of several transcription factor mRNAs from genes whose germ line deletions cause defects in the development of OSNs: *Neurog1*, *Emx2*, *Six1* and *Runx1* [44,47,55,68,69].

Thousands of genes are expressed in the olfactory epithelium and hundreds of them are involved in transcriptional regulation. By identifying the transcriptional regulators that increased five days after bullectomy and knowing whether these transcripts are present in immature OSNs or non-OSN cell types, we have predicted transcription factors involved in the shifts in gene expression programs that drive neural fate decisions and subsequent steps in OSN differentiation. The key role that basal cells play in driving the formation of OSNs is reflected in the evidence that 98% of the annotated transcriptional regulators that

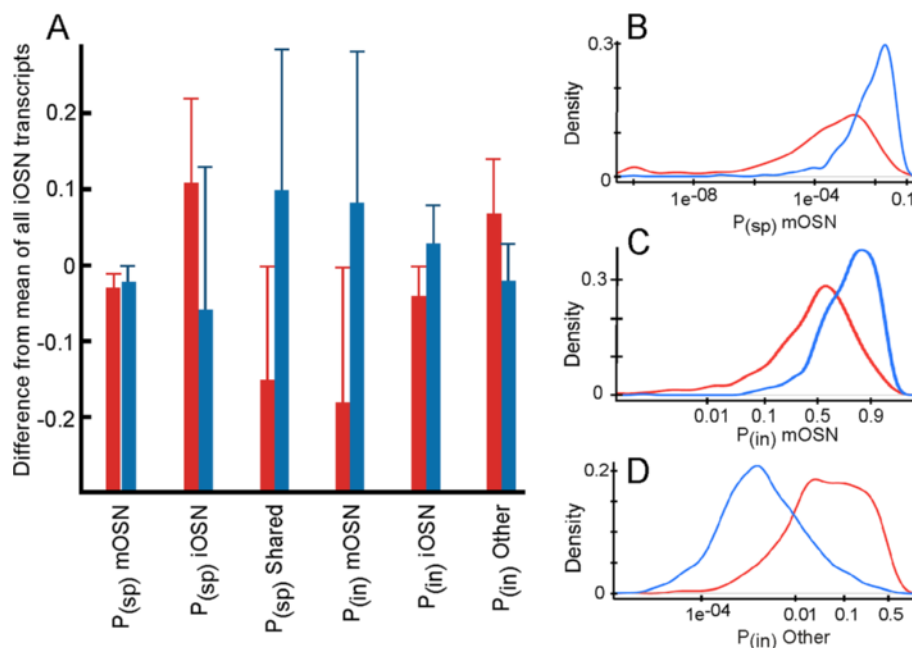


Figure 5 Immature OSN mRNAs that increased after bullectomy (red) have an expression pattern distinct from immature OSN mRNAs that decreased after bullectomy (blue). **A.** Decreased mRNAs had higher $P_{(sp)}$ and $P_{(in)}$ values in mature OSN categories (mOSN and Shared categories) while increased mRNAs had higher values in Other cell type and immature OSN-specific categories. Error bars, standard deviations. **B – D.** Examples of the density distributions of the increased and decreased immature OSN transcripts for three measures of cell type expression patterns in the olfactory epithelium. All distribution pairs differed ($p = 0.0000$ in each case).

Table 6 Immature OSNs mRNAs that were differentially responsive to bulbectomy had distinct patterns of $P_{(sp)}$ and $P_{(in)}$ value averages

iOSN mRNA response	# genes	$P_{(sp)}$ mOSN	$P_{(sp)}$ iOSN	$P_{(sp)}$ OSN	$P_{(in)}$ mOSN	$P_{(in)}$ iOSN	$P_{(in)}$ Other
Up	522	.00 ± .01	.41 ± .28	.48 ± .28	.48 ± .28	.89 ± .13	.11 ± .13
Down	578	.01 ± .02	.24 ± .19	.73 ± .19	.74 ± .20	.97 ± .05	.02 ± .05
All	8756	.03	.3	.63	.66	.93	.04

iOSN, immature OSN; mOSN, mature OSN; OSN, shared by both mature and immature OSNs.

increased after bulbectomy are expressed primarily in non-OSN cell types. Many are already known to be expressed in basal cells, sometimes continuing into immature OSNs, so we hypothesize that others are likely to follow this same pattern of expression. The products of these genes probably help drive basal cells and immature OSNs along the process of OSN differentiation. The coexpression of these transcription factors across cell type and time help identify potential networks of transcriptional regulators.

Conclusions

A comprehensive catalog of the genes expressed by a cell type is a valuable tool, providing not only a long list of molecular functions performed by the products of each of the genes, but also revealing emergent properties formed by the functional relationships between the encoded proteins. By triggering apoptosis of mature OSNs and causing predictable changes in mRNA abundance, we confirmed the reliability of our previous identification of genes expressed in OSNs [31,32] and were able to further parse genes expressed by immature OSNs into early and late categories – differences that correlate with functions associated with neurite outgrowth versus neuronal homeostasis, respectively. Cell lineages may look like distinct steps when viewed from the perspective of cell morphology or the expression of a few marker genes, but when viewed from the perspective of the entire transcriptome the progression of a cell through the OSN cell lineage appears more gradual. The genes expressed in any given cell type in the lineage initiate (and terminate) expression at widely different points in the lineage.

The molecular underpinnings of adult neurogenesis in the brain often appear to recapitulate events that drive embryonic neurogenesis [70-75]. In the case of the

olfactory epithelium a comprehensive assessment of embryonic gene expression is lacking, so a direct comparison is not possible. However, we found extensive similarity with embryonic brain. Of the 1,723 mRNAs increased after bulbectomy, 54% of them were also significantly more abundant during the neurogenic phase of embryonic hippocampal development at age E10.5 – E11.5 compared to a 27% match during the gliogenic phase at age E16.5 [76]. 100 of these shared genes are annotated as regulating transcription. They include *Alx1*, *Ets1*, *Etv6*, *Eya2*, *Eya4*, *Foxc1*, *Foxn3*, *Hey1*, *Klf3*, *Meis1*, *Meis2*, *Msx1*, *Mybl1*, *Myc*, *Mycn*, *Neurod1*, *Neurog1*, *Otx1*, *Otx2*, *Pax3*, *Pax6*, *Rest*, *Runx1*, *Six1*, *Six2*, *Smad3*, *Smad5*, *Smad7*, *Stat1*, *Stat6*, *Tbl1x*, *Tead2*, *Tead3*, and *Trp63*. The process of producing different types of neurons appears fundamentally similar across two widely different neural structures and ages. However, it would be premature to conclude that these shared genes have identical functions in embryonic brain development and adult olfactory neurogenesis because the integrative nature of transcriptional regulation would allow transcriptional regulators to contribute to distinctly different events in the development of different neural phenotypes.

Significant progress in identifying molecular events that drive adult neurogenesis have long been made by pursuing studies of individual genes, and more recently by applying global expression profiling methods to the problem [27-29,77-80]. We have now achieved a comprehensive characterization of changes in mRNA abundance during adult neurogenesis in one tissue and have been able to specify biological processes active at specific stages in this lineage. A functional overview of the OSN cell lineage that emphasizes the changes resulting from shifts in gene expression patterns can be built by incorporating data from analyses of specific stages in the OSN

Table 7 Transcripts expressed by both mature and immature OSNs (OSN) that were differentially responsive to bulbectomy had distinct patterns of $P_{(sp)}$ and $P_{(in)}$ value averages

Shared OSN mRNA response	# genes	$P_{(sp)}$ mOSN	$P_{(sp)}$ iOSN	$P_{(sp)}$ OSN	$P_{(in)}$ mOSN	$P_{(in)}$ iOSN	$P_{(in)}$ Other
Up	340	.02 ± .05	.18 ± .13	.70 ± .14	.72 ± .15	.88 ± .12	.10 ± .12
Down	955	.10 ± .12	.11 ± .12	.78 ± .11	.88 ± .13	.89 ± .12	.01 ± .04
All	6442	.04	.17	.75	.8	.93	.03

iOSN, immature OSN; mOSN, mature OSN.

lineage (Figure 6). Proliferation of neurally fated globose basal cells and changes in transcriptional regulation within these cells produce Neurog1⁺ globose basal cells whose progeny become nascent OSNs characterized by the initial extension of axons and dendrites. Increasing expression of genes involved in vesicular trafficking, cytoskeletal organization, focal adhesion and cholesterol biosynthesis help speed the growth of the neurites and the initial differentiation of immature OSNs [31]. Further immature OSN differentiation is characterized by expression of the components of networks that increase the capacity of these cells to translate proteins, respond to stress, transport proteins and make ATP. These networks carry over into mature OSNs, where the final stages of differentiation are completed by shifting to mature patterns of expression of ion channels, transporters and the final components of synapses and olfactory cilia. Many of the gene products contributing to these functions can now be identified. However, we should not forget that more than half of the genes whose mRNAs change in abundance after bulboectomy either encode proteins with no known function or are annotated only by similarity to other proteins. Many of these unstudied genes are likely to encode proteins involved in the

biological processes already identified as supporting adult neurogenesis in the olfactory epithelium, but some may also contribute to functional networks that we have not yet been able to associate with the OSN cell lineage.

Methods

Mice

C57Bl/6 mice were purchased from Harlan Laboratories, Inc. (Indianapolis, IN). Mice were housed in the Department of Laboratory Animal Resources at the University of Kentucky. All treatments and procedures used with mice were approved by the university's institutional animal care and use committee and were consistent with National Institute of Health guidelines on animal use in research.

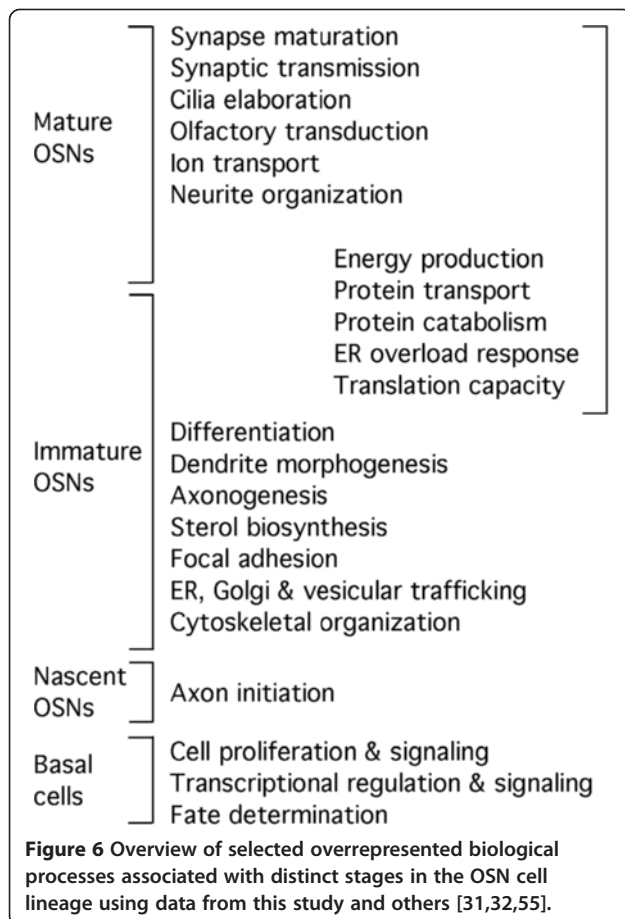
Olfactory bulboectomy

Male C57Bl/6 mice, age 6 weeks, were anesthetized with Ketamine/Xylazine (100 mg/kg; 10 mg/kg) i.p., the forehead was shaved, disinfectant applied to this site, and a lubricant (Artificial Tears, Butler Schein, Dublin, OH) was applied to the eyes. A midline incision was made between the eyes and a 1.5 mm hole above one olfactory bulb was drilled in the skull with a diamond-tipped burr. This bulb was removed by aspiration, the cavity filled with Gelfoam[®] (Pfizer, New York), and the skin was closed with 5-0 Ethilon sutures (Ethicon, San Angelo, TX). To enhance recovery, 0.5 ml of warm saline was given subcutaneously. The mice were placed on a heating pad and allowed to recover, then given food and water ad libitum for 5 days.

RNA isolation and mRNA abundance measurement

Three mice previously subjected to unilateral bulboectomy were euthanized by inhalation of CO₂, decapitated, and dissected to isolate olfactory epithelia ipsilateral and contralateral to the lesion. These were placed separately into ice-cold TriReagent (Molecular Research Center, Inc., Cincinnati, OH) for homogenization using a polytron. Total RNA was isolated according to the protocol supplied with the TriReagent and stored at -80°C. RNA quantity and quality was determined with a UV spectrophotometer and a model 2100 Bioanalyzer (Agilent Technologies, Palo Alto, CA).

Labeling of RNA samples, hybridization to Affymetrix GeneChip[®] Mouse Exon 1.0 Sense Target Arrays, and scanning of signals were done by the University of Kentucky Microarray Core Facility. Affymetrix Expression Console Software was used for generation of gene level robust multichip analysis values for transcript clusters. These were analyzed at the core annotation level to limit the data to probe sets that



map to genes with annotated full-length open reading frames. These data were manipulated in Excel (Microsoft Corp., Redmond, WA). Data from the 10% of genes with the lowest average signal intensities were discarded. Statistical analyses via paired t-tests were done in SAS 9.2 (SAS Institute, Cary, NC). Setting $\alpha = 0.05$ gave false discovery rates of 19.3% or less. Microarray data are available via the Gene Expression Omnibus (<http://www.ncbi.nlm.nih.gov/geo/>) under accession number GSE45931.

Bioinformatics

Functional bioinformatics to identify over-represented categories of biological processes, molecular functions and cytoplasmic compartments was done using DAVID (<http://david.abcc.ncifcrf.gov/>), with Benjamini corrected p-value criteria set at 0.05 [81]. Statistically overrepresented categories supported by less than 10 genes (unless directly linked to other overrepresented functional categories) and extremely broad categories near the top of the Gene Ontology hierarchy were ignored.

Genes

Mouse genes and mRNAs are displayed according to the gene symbol conventions of Genbank, a repository of the National Center for Biotechnology Information (U.S. A). Gene accession numbers for the genes corresponding to all significantly affected mRNAs are provided (Additional file 1: Table S1).

In situ hybridization

As we have described previously, the in situ hybridization methods of Ishii and colleagues [82,83] were followed meticulously, using 10–16 μm coronal cryosections of the nasal region of the head [27,32,43]. For each mRNA species, cDNA fragments of several hundred bp were

amplified by PCR from olfactory epithelium cDNA and cloned into pBluescript (Additional file 6). The fragments chosen were selected to have less than 80% identity to any other mouse mRNA. Recombinant RNA probes labeled with digoxigenin were prepared for each mRNA species. Sense controls were invariably negative.

Wide-field images were obtained on a Nikon Diaphot 300 inverted microscope using a Spot 2e camera and Spot software version 4.0.6 through a 40x/0.75 numerical aperture Plan Fluor objective or a 4x/0.13 numerical aperture Plan objective. Images were processed in Adobe Photoshop by adjusting size and brightness. Images were combined and labeled in Deneba Canvas (version 8.0).

Cell type assignments

Previous work profiling mRNA abundance in purified mature and immature OSNs resulted in the estimation of probabilities of expression specific to mature OSNs, to immature OSNs, to both developmental stages of OSNs (shared) and to the residual population of all other cell types in the olfactory epithelium (Other) for every gene whose mRNAs were detected - termed $P_{(sp)}$ values [31]. In addition to specificity, also calculated were the probabilities of mere expression in mature OSNs, immature OSNs and the Other cell type category for all genes whose mRNAs were detected - termed $P_{(in)}$ values. As examples, the values of several cell type specific markers are shown in Table 8. The accuracy of these data, judged by in situ hybridization for 352 mRNAs, was 96% for $P_{(in)}$ value predictions of expression in OSNs and 86% for $P_{(sp)}$ value predictions of specificity. To use these data as quantitative measures of expression pattern similarity among mRNAs affected by bullectomy, the density distributions of $P_{(in)}$ and $P_{(sp)}$ values of groups of mRNAs that

Table 8 Examples of $P_{(sp)}$ and $P_{(in)}$ probabilities for olfactory epithelium cell type markers

Cell type	Marker	mOSN $P_{(sp)}$	iOSN $P_{(sp)}$	Shared OSN $P_{(sp)}$	Other $P_{(sp)}$	mOSN $P_{(in)}$	iOSN $P_{(in)}$	Other $P_{(in)}$
Sus	Epas1	0.00	0.12	0.00	0.88	0.00	0.12	0.88
Sus	Slc2a3	0.00	0.00	0.00	1.00	0.00	0.00	1.00
mOSN	Omp	1.00	0.00	0.00	0.00	1.00	0.00	0.00
mOSN	Adcy3	1.00	0.00	0.00	0.00	1.00	0.00	0.00
iOSN	Gap43	0.00	0.93	0.06	0.00	0.06	1.00	0.00
iOSN	Stmn2	0.00	0.72	0.28	0.01	0.28	0.99	0.01
GBC	Neurog1	0.00	0.31	0.02	0.66	0.02	0.34	0.66
GBC	Ascl1	0.00	0.02	0.00	0.98	0.00	0.02	0.98
HBC	Trp63	0.00	0.05	0.00	0.95	0.00	0.05	0.95
HBC	Krt5	0.00	0.13	0.00	0.87	0.00	0.13	0.87

Sus, sustentacular cell; mOSN, mature OSN; iOSN, immature OSN; GBC, globose basal cell; HBC, horizontal basal cell; OSN, mature and immature OSNs; Other, non-OSN cell types.

responded similarly to bulbectomy were calculated and then compared by Wilcoxon signed rank test.

Additional files

Additional file 1: Table S1. Significant mRNAs; Up list followed by Down list.

Additional file 2: Transcripts that increased after bulbectomy even though their P(sp) mature OSN values predict expression in mature OSNs proved to be expressed in non-OSN cell types.

Additional file 3: Examples of mature OSN expression patterns of transcripts that went down after bulbectomy.

Additional file 4: Transcripts that decreased after bulbectomy even though their P(sp) Other values predict expression in non-OSN cell types proved to be expressed in OSNs.

Additional file 5: Differentially abundant transcription factor mRNAs.

Additional file 6: DNA fragments used for in situ hybridization probes.

Abbreviations

OSN: Olfactory sensory neuron.

Competing interests

The authors declare no competing interests.

Authors' contributions

PMH helped conceive the study, did the in situ hybridization, RNA isolations, functional bioinformatics, cared for the mice, and helped draft the manuscript. AJS and PB did statistical analyses. TSM helped conceive the study, did the mouse surgeries and dissections, and helped draft the manuscript. All authors read and approved the final manuscript.

Acknowledgements

Funded by R01 DC007194 and R21 DC009624 to T.Mc., F32 DC011427 to P.M.H. and UL1TR000117 to A.J.S.

Author details

¹Department of Physiology, University of Kentucky, 800 Rose St, Lexington, KY 40536-0298, USA. ²Department of Statistics, University of Kentucky, Lexington, KY 40506-0027, USA. ³Department of Biostatistics, University of Iowa, Iowa City, IA 52242, USA.

Received: 22 October 2013 Accepted: 15 November 2013

Published: 22 November 2013

References

- Deng W, Aimone JB, Gage FH: New neurons and new memories: how does adult hippocampal neurogenesis affect learning and memory? *Nat Rev Neurosci* 2010, **11**(5):339–350.
- Livneh Y, Mizrahi A: Experience-dependent plasticity of mature adult-born neurons. *Nat Neurosci* 2012, **15**(1):26–28.
- Lledo PM, Alonso M, Grubb MS: Adult neurogenesis and functional plasticity in neuronal circuits. *Nat Rev Neurosci* 2006, **7**(3):179–193.
- Magavi SS, Mitchell BD, Szentirmai O, Carter BS, Macklis JD: Adult-born and preexisting olfactory granule neurons undergo distinct experience-dependent modifications of their olfactory responses in vivo. *J Neurosci* 2005, **25**(46):10729–10739.
- Song J, Christian KM, Ming GL, Song H: Modification of hippocampal circuitry by adult neurogenesis. *Dev Neurobiol* 2012, **72**(7):1032–1043.
- Carr VM, Farbman AI: Ablation of the olfactory bulb up-regulates the rate of neurogenesis and induces precocious cell death in olfactory epithelium. *Exp Neurol* 1992, **115**(1):55–59.
- Hinds JW, Hinds PL, McNelly NA: An autoradiographic study of the mouse olfactory epithelium: evidence for long-lived receptors. *Anat Rec* 1984, **210**(2):375–383.
- Bauer S, Rasika S, Han J, Mauduit C, Raccuit M, Morel G, Jourdan F, Benahmed M, Moysé E, Patterson PH: Leukemia inhibitory factor is a key signal for injury-induced neurogenesis in the adult mouse olfactory epithelium. *J Neurosci* 2003, **23**(5):1792–1803.
- Doyle KL, Karl T, Hort Y, Duffy L, Shine J, Herzog H: Y1 receptors are critical for the proliferation of adult mouse precursor cells in the olfactory neuroepithelium. *J Neurochem* 2008, **105**(3):641–652.
- Getchell TV, Shah DS, Partin JV, Subhedar NK, Getchell ML: Leukemia inhibitory factor mRNA expression is upregulated in macrophages and olfactory receptor neurons after target ablation. *J Neurosci Res* 2002, **67**(2):246–254.
- Gokoffski KK, Wu HH, Beites CL, Kim J, Kim EJ, Matzuk MM, Johnson JE, Lander AD, Calof AL: Activin and GDF11 collaborate in feedback control of neuroepithelial stem cell proliferation and fate. *Development* 2011, **138**(19):4131–4142.
- Hansel DE, Eipper BA, Ronnett GV: Neuropeptide Y functions as a neuroproliferative factor. *Nature* 2001, **410**(6831):940–944.
- Jia C, Hegg CC: NPY mediates ATP-induced neuroproliferation in adult mouse olfactory epithelium. *Neurobiol Dis* 2010, **38**(3):405–413.
- Lander AD, Gokoffski KK, Wan FY, Nie Q, Calof AL: Cell lineages and the logic of proliferative control. *PLoS Biol* 2009, **7**(1):e15.
- Manglapus GL, Youngentob SL, Schwob JE: Expression patterns of basic helix-loop-helix transcription factors define subsets of olfactory progenitor cells. *J Comp Neurol* 2004, **479**(2):216–233.
- Wu HH, Ivkovic S, Murray RC, Jaramillo S, Lyons KM, Johnson JE, Calof AL: Autoregulation of neurogenesis by GDF11. *Neuron* 2003, **37**(2):197–207.
- Merkle FT, Alvarez-Buylla A: Neural stem cells in mammalian development. *Curr Opin Cell Biol* 2006, **18**(6):704–709.
- Chen X, Fang H, Schwob JE: Multipotency of purified, transplanted globose basal cells in olfactory epithelium. *J Comp Neurol* 2004, **469**(4):457–474.
- Fletcher ML: Analytical processing of binary mixture information by olfactory bulb glomeruli. *PLoS One* 2011, **6**(12):e29360.
- Huard JM, Youngentob SL, Goldstein BJ, Luskin MB, Schwob JE: Adult olfactory epithelium contains multipotent progenitors that give rise to neurons and non-neural cells. *J Comp Neurol* 1998, **400**(4):469–486.
- Iwai N, Zhou Z, Roop DR, Behringer RR: Horizontal basal cells are multipotent progenitors in normal and injured adult olfactory epithelium. *Stem Cells* 2008, **26**(5):1298–1306.
- Jang W, Lambropoulos J, Woo JK, Peluso CE, Schwob JE: Maintaining epitheliopoietic potency when culturing olfactory progenitors. *Exp Neurol* 2008, **214**(1):25–36.
- Leung CT, Coulombe PA, Reed RR: Contribution of olfactory neural stem cells to tissue maintenance and regeneration. *Nat Neurosci* 2007, **10**(6):720–726.
- Cuschieri A, Bannister LH: The development of the olfactory mucosa in the mouse: electron microscopy. *J Anat* 1975, **119**(3):471–498.
- Marcucci F, Zou DJ, Firestein S: Sequential onset of presynaptic molecules during olfactory sensory neuron maturation. *J Comp Neurol* 2009, **516**(3):187–198.
- Schwarzenbacher K, Fleischer J, Breer H: Formation and maturation of olfactory cilia monitored by odorant receptor-specific antibodies. *Histochem Cell Biol* 2005, **123**(4–5):419–428.
- Shetty RS, Bose SC, Nickell MD, McIntyre JC, Hardin DH, Harris AM, McClintock TS: Transcriptional changes during neuronal death and replacement in the olfactory epithelium. *Mol Cell Neurosci* 2005, **30**(1):90–107.
- Krolewski RC, Jang W, Schwob JE: The generation of olfactory epithelial neurospheres in vitro predicts engraftment capacity following transplantation in vivo. *Exp Neurol* 2011, **229**(2):308–323.
- Tietjen I, Rihel JM, Cao Y, Koentges G, Zakhary L, Dulac C: Single-cell transcriptional analysis of neuronal progenitors. *Neuron* 2003, **38**(2):161–175.
- Nurse P, Hayles J: The cell in an era of systems biology. *Cell* 2011, **144**(6):850–854.
- Nickell MD, Breheny P, Stromberg AJ, McClintock TS: Genomics of mature and immature olfactory sensory neurons. *J Comp Neurol* 2012, **520**:2608–2609.
- Sammata N, Yu TT, Bose SC, McClintock TS: Mouse olfactory sensory neurons express 10,000 genes. *J Comp Neurol* 2007, **502**:1138–1156.
- Calof AL: Intrinsic and extrinsic factors regulating vertebrate neurogenesis. *Curr Opin Neurobiol* 1995, **5**(1):19–27.

34. Gordon MK, Mumm JS, Davis RA, Holcomb JD, Calof AL: **Dynamics of MASH1 expression in vitro and in vivo suggest a non-stem cell site of MASH1 action in the olfactory receptor neuron lineage.** *Mol Cell Neurosci* 1995, **6**(4):363–379.
35. Holcomb JD, Mumm JS, Calof AL: **Apoptosis in the neuronal lineage of the mouse olfactory epithelium: regulation in vivo and in vitro.** *Dev Biol* 1995, **172**(1):307–323.
36. Suzuki Y, Schafer J, Farbman AI: **Phagocytic cells in the rat olfactory epithelium after bulbectomy.** *Exp Neurol* 1995, **136**(2):225–233.
37. Asson-Batres MA, Smith WB: **Localization of retinaldehyde dehydrogenases and retinoid binding proteins to sustentacular cells, glia, Bowman's gland cells, and stroma: potential sites of retinoic acid synthesis in the postnatal rat olfactory organ.** *J Comp Neurol* 2006, **496**(2):149–171.
38. Nunez-Parra A, Cortes-Campos C, Bacigalupo J, Garcia Mde L, Nualart F, Reyes JG: **Expression and distribution of facilitative glucose (GLUTs) and monocarboxylate/H⁺ (MCTs) transporters in rat olfactory epithelia.** *Chem Senses* 2011, **36**(9):771–780.
39. Piras E, Franzen A, Fernandez EL, Bergstrom U, Raffalli-Mathieu F, Lang M, Brittebo EB: **Cell-specific expression of CYP2A5 in the mouse respiratory tract: effects of olfactory toxicants.** *J Histochem Cytochem* 2003, **51**(11):1545–1555.
40. Sammets N, Hardin DL, McClintock TS: **Uncx regulates proliferation of neural progenitor cells and neuronal survival in the olfactory epithelium.** *Mol Cell Neurosci* 2010, **45**(4):398–407.
41. Sammets N, McClintock TS: **Chemical stress induces the unfolded protein response in olfactory sensory neurons.** *J Comp Neurol* 2010, **518**(10):1825–1836.
42. Solbu TT, Holten T: **Aquaporin pathways and mucin secretion of Bowman's glands might protect the olfactory mucosa.** *Chem Senses* 2012, **37**(1):35–46.
43. Yu TT, McIntyre JC, Bose SC, Hardin D, Owen MC, McClintock TS: **Differentially expressed transcripts from phenotypically identified olfactory sensory neurons.** *J Comp Neurol* 2005, **483**(3):251–262.
44. Cau E, Casarosa S, Guillemot F: **Mash1 and Ngn1 control distinct steps of determination and differentiation in the olfactory sensory neuron lineage.** *Development* 2002, **129**(8):1871–1880.
45. Davis JA, Reed RR: **Role of Olf-1 and Pax-6 transcription factors in neurodevelopment.** *J Neurosci* 1996, **16**(16):5082–5094.
46. Guo Z, Packard A, Krolewski RC, Harris MT, Manglapus GL, Schwob JE: **Expression of pax6 and sox2 in adult olfactory epithelium.** *J Comp Neurol* 2010, **518**(21):4395–4418.
47. Ikeda K, Kageyama R, Suzuki Y, Kawakami K: **Six1 is indispensable for production of functional progenitor cells during olfactory epithelial development.** *Int J Dev Biol* 2010, **54**(10):1453–1464.
48. Sullivan SL, Bohm S, Ressler KJ, Horowitz LF, Buck LB: **Target-independent pattern specification in the olfactory epithelium.** *Neuron* 1995, **15**(4):779–789.
49. Kyrkanides S, Brouxhon SM, Tallents RH, Miller JN, Olschowka JA, O'Banion MK: **Conditional expression of human beta-hexosaminidase in the neurons of Sandhoff disease rescues mice from neurodegeneration but not neuroinflammation.** *J Neuroinflammation* 2012, **9**:186.
50. Kyrkanides S, Miller AW, Miller JN, Tallents RH, Brouxhon SM, Olschowka ME, O'Banion MK, Olschowka JA: **Peripheral blood mononuclear cell infiltration and neuroinflammation in the HexB^{-/-} mouse model of neurodegeneration.** *J Neuroimmunology* 2008, **203**(1):50–57.
51. Menzel K, Hausmann M, Obermeier F, Schreiter K, Dunger N, Bataille F, Falk W, Scholmerich J, Herfarth H, Rogler G: **Cathepsins B, L and D in inflammatory bowel disease macrophages and potential therapeutic effects of cathepsin inhibition in vivo.** *Clin Exp Immunol* 2006, **146**(1):169–180.
52. Nepal RM, Mampe S, Shaffer B, Erickson AH, Bryant P: **Cathepsin L maturation and activity is impaired in macrophages harboring *M. avium* and *M. tuberculosis*.** *Int Immunol* 2006, **18**(6):931–939.
53. Blomster LV, Vukovic J, Hendrickx DA, Jung S, Harvey AR, Filgueira L, Ruitenber MJ: **CX3CR1 deficiency exacerbates neuronal loss and impairs early regenerative responses in the target-ablated olfactory epithelium.** *Mol Cell Neurosci* 2011, **48**(3):236–245.
54. Fletcher RB, Prasol MS, Estrada J, Baudhuin A, Vranizan K, Choi YG, Ngai J: **p63 regulates olfactory stem cell self-renewal and differentiation.** *Neuron* 2011, **72**(5):748–759.
55. McIntyre JC, Titlow WB, McClintock TS: **Axon growth and guidance genes identify nascent, immature, and mature olfactory sensory neurons.** *J Neurosci Res* 2010, **88**(15):3243–3256.
56. Chacon MR, Fazzari P: **FAK: dynamic integration of guidance signals at the growth cone.** *Cell Adhes Migrat* 2011, **5**(1):52–55.
57. Chacon MR, Navarro AI, Cuesto G, del Pino I, Scott R, Morales M, Rico B: **Focal adhesion kinase regulates actin nucleation and neuronal filopodia formation during axonal growth.** *Development* 2012, **139**(17):3200–3210.
58. Brackenbury WJ, Davis TH, Chen C, Slat EA, Detrow MJ, Dickendesher TL, Ranscht B, Isom LL: **Voltage-gated Na⁺ channel beta1 subunit-mediated neurite outgrowth requires Fyn kinase and contributes to postnatal CNS development in vivo.** *J Neurosci* 2008, **28**(12):3246–3256.
59. Buchstaller A, Kunz S, Berger P, Kunz B, Ziegler R, Rader C, Sonderegger P: **Cell adhesion molecules NgCAM and axonin-1 form heterodimers in the neuronal membrane and cooperate in neurite outgrowth promotion.** *J Cell Biol* 1996, **135**(6 Pt 1):1593–1607.
60. Erkman L, Yates PA, McLaughlin T, McEvilly RJ, Whisenhunt T, O'Connell SM, Krones AI, Kirby MA, Rapaport DH, Bermingham JR, et al: **A POU domain transcription factor-dependent program regulates axon pathfinding in the vertebrate visual system.** *Neuron* 2000, **28**(3):779–792.
61. Guimond MO, Roberge C, Gallo-Payet N: **Fyn is involved in angiotensin II type 2 receptor-induced neurite outgrowth, but not in p42/p44mapk in NG108-15 cells.** *Mol Cell Neurosci* 2010, **45**(3):201–212.
62. Hammarlund M, Jorgensen EM, Bastiani MJ: **Axons break in animals lacking beta-spectrin.** *J Cell Biol* 2007, **176**(3):269–275.
63. Kerstein PC, Jacques-Fricke BT, Rengifo J, Mogen BJ, Williams JC, Gottlieb PA, Sachs F, Gomez TM: **Mechanosensitive TRPC1 channels promote calpain proteolysis of talin to regulate spinal axon outgrowth.** *J Neurosci* 2013, **33**(1):273–285.
64. Lundquist EA, Herman RK, Shaw JE, Bargmann CI: **UNC-115, a conserved protein with predicted LIM and actin-binding domains, mediates axon guidance in *C. elegans*.** *Neuron* 1998, **21**(2):385–392.
65. Sakane A, Honda K, Sasaki T: **Rab13 regulates neurite outgrowth in PC12 cells through its effector protein, JRAB/MICAL-L2.** *Mol Cell Biol* 2010, **30**(4):1077–1087.
66. Treubert U, Brummendorf T: **Functional cooperation of beta1-integrins and members of the Ig superfamily in neurite outgrowth induction.** *J Neurosci* 1998, **18**(5):1795–1805.
67. Varnum-Finney B, Reichardt LF: **Vinculin-deficient PC12 cell lines extend unstable lamellipodia and filopodia and have a reduced rate of neurite outgrowth.** *J Cell Biol* 1994, **127**(4):1071–1084.
68. Ikeda K, Ookawara S, Sato S, Ando Z, Kageyama R, Kawakami K: **Six1 is essential for early neurogenesis in the development of olfactory epithelium.** *Dev Biol* 2007, **311**(1):53–68.
69. Theriault FM, Nuthall HN, Dong Z, Lo R, Barnabe-Heider F, Miller FD, Stifani S: **Role for Runx1 in the proliferation and neuronal differentiation of selected progenitor cells in the mammalian nervous system.** *J Neurosci* 2005, **25**(8):2050–2061.
70. Alvarez-Buylla A, Kohwi M, Nguyen TM, Merkle FT: **The heterogeneity of adult neural stem cells and the emerging complexity of their niche.** *Cold Spring Harb Symp Quant Biol* 2008, **73**:357–365.
71. Jawerka M, Colak D, Dimou L, Spiller C, Lagger S, Montgomery RL, Olson EN, Wurst W, Gottlicher M, Gotz M: **The specific role of histone deacetylase 2 in adult neurogenesis.** *Neuron Glia Biol* 2010, **6**(2):93–107.
72. Ma DK, Marchetto MC, Guo JU, Ming GL, Gage FH, Song H: **Epigenetic choreographers of neurogenesis in the adult mammalian brain.** *Nat Neurosci* 2010, **13**(11):1338–1344.
73. Sohar US, Arlotta P, Macklis JD: **Developmental Controls are Re-Expressed during Induction of Neurogenesis in the Neocortex of Young Adult Mice.** *Front Neurosci* 2012, **6**:12.
74. Steele AD, Emsley JG, Ozdinler PH, Lindquist S, Macklis JD: **Prion protein (PrPc) positively regulates neural precursor proliferation during developmental and adult mammalian neurogenesis.** *Proc Natl Acad Sci U S A* 2006, **103**(9):3416–3421.
75. Suh H, Deng W, Gage FH: **Signaling in adult neurogenesis.** *Annu Rev Cell Dev Biol* 2009, **25**:253–275.
76. Shimogori T, Lee DA, Miranda-Angulo A, Yang Y, Wang H, Jiang L, Yoshida AC, Kataoka A, Mashiko H, Avetisyan M, et al: **A genomic atlas of mouse hypothalamic development.** *Nat Neurosci* 2010, **13**(6):767–775.
77. Boutin C, Hardt O, de Chevigny A, Core N, Goebbels S, Seidenfaden R, Bosio A, Cremer H: **NeuroD1 induces terminal neuronal differentiation in olfactory neurogenesis.** *Proc Natl Acad Sci U S A* 2010, **107**(3):1201–1206.

78. Hsieh J: Orchestrating transcriptional control of adult neurogenesis. *Genes Dev* 2012, **26**(10):1010–1021.
79. Karsten SL, Kudo LC, Jackson R, Sabatti C, Kornblum HI, Geschwind DH: Global analysis of gene expression in neural progenitors reveals specific cell-cycle, signaling, and metabolic networks. *Dev Biol* 2003, **261**(1):165–182.
80. Petrik D, Jiang Y, Birnbaum SG, Powell CM, Kim MS, Hsieh J, Eisch AJ: Functional and mechanistic exploration of an adult neurogenesis-promoting small molecule. *FASEB J* 2012, **26**(8):3148–3162.
81. Huang DW, Sherman BT, Lempicki RA: Systematic and integrative analysis of large gene lists using DAVID bioinformatics resources. *Nat Protoc* 2009, **4**(1):44–57.
82. Ishii T, Hirota J, Mombaerts P: Combinatorial coexpression of neural and immune multigene families in mouse vomeronasal sensory neurons. *Curr Biol* 2003, **13**(5):394–400.
83. Ishii T, Omura M, Mombaerts P: Protocols for two- and three-color fluorescent RNA in situ hybridization of the main and accessory olfactory epithelia in mouse. *J Neurocytol* 2004, **33**(6):657–669.

doi:10.1186/1756-6606-6-49

Cite this article as: Heron *et al.*: Molecular events in the cell types of the olfactory epithelium during adult neurogenesis. *Molecular Brain* 2013 **6**:49.

**Submit your next manuscript to BioMed Central
and take full advantage of:**

- Convenient online submission
- Thorough peer review
- No space constraints or color figure charges
- Immediate publication on acceptance
- Inclusion in PubMed, CAS, Scopus and Google Scholar
- Research which is freely available for redistribution

Submit your manuscript at
www.biomedcentral.com/submit

