



University Medical Center Groningen

University of Groningen

## Systematic comparison of plasma EBV DNA, anti-EBV antibodies and miRNA levels for early detection and prognosis of nasopharyngeal carcinoma

Malaysian Nasopharyngeal Carcinoma; Tan, L. P.; Tan, G. W.; Sivanesan, V. M.; Goh, Siang Ling; Ng, Xun Jin; Lim, Chun Shen; Kim, Wee Ric; Mohidin, Taznim Begam Binti Mohd; Dali, Nor Soleha Mohd

*Published in:*

International Journal of Cancer

*DOI:*

[10.1002/ijc.32656](https://doi.org/10.1002/ijc.32656)

**IMPORTANT NOTE: You are advised to consult the publisher's version (publisher's PDF) if you wish to cite from it. Please check the document version below.**

*Document Version*

Publisher's PDF, also known as Version of record

*Publication date:*

2019

[Link to publication in University of Groningen/UMCG research database](#)

*Citation for published version (APA):*

Malaysian Nasopharyngeal Carcinoma, Tan, L. P., Tan, G. W., Sivanesan, V. M., Goh, S. L., Ng, X. J., ... Khoo, A. S-B. (2019). Systematic comparison of plasma EBV DNA, anti-EBV antibodies and miRNA levels for early detection and prognosis of nasopharyngeal carcinoma. *International Journal of Cancer*. <https://doi.org/10.1002/ijc.32656>

### Copyright







Other than for strictly personal use, it is not permitted to download or to forward/distribute the text or part of it without the consent of the author(s) and/or copyright holder(s), unless the work is under an open content license (like Creative Commons).

### Take-down policy

If you believe that this document breaches copyright please contact us providing details, and we will remove access to the work immediately and investigate your claim.

Downloaded from the University of Groningen/UMCG research database (Pure): <http://www.rug.nl/research/portal>. For technical reasons the number of authors shown on this cover page is limited to 10 maximum.

# Systematic comparison of plasma EBV DNA, anti-EBV antibodies and miRNA levels for early detection and prognosis of nasopharyngeal carcinoma

Lu Ping Tan <sup>1,2</sup>, Geok Wee Tan <sup>1,3</sup>, Vijaya Mohan Sivanesan <sup>1</sup>, Siang Ling Goh<sup>4</sup>, Xun Jin Ng<sup>1</sup>, Chun Shen Lim <sup>4,5</sup>, Wee Ric Kim<sup>1</sup>, Taznim Begam Binti Mohd Mohidin <sup>4</sup>, Nor Soleha Mohd Dali<sup>6</sup>, Siew Hoon Ong<sup>1</sup>, Chun Ying Wong<sup>7</sup>, Halimuddin Sawali<sup>8</sup>, Yoke Yeow Yap<sup>9,10</sup>, Faridah Hassan<sup>11</sup>, Kin Choo Pua<sup>12</sup>, Cheng Eng Koay<sup>13,14</sup>, Ching Ching Ng<sup>4</sup>, and Alan Soo-Beng Khoo <sup>1</sup>, the Malaysian Nasopharyngeal Carcinoma Study Group<sup>†</sup>

<sup>1</sup>Molecular Pathology Unit, Cancer Research Centre, Institute for Medical Research, Ministry of Health Malaysia, Kuala Lumpur, Malaysia

<sup>2</sup>Department of Medical Sciences, School of Healthcare and Medical Sciences, Sunway University, Selangor, Malaysia

<sup>3</sup>Department of Pathology and Medical Biology, University of Groningen, University Medical Center Groningen, Groningen, The Netherlands

<sup>4</sup>Faculty of Science, University of Malaya, Institute of Biological Sciences, Kuala Lumpur, Malaysia

<sup>5</sup>Department of Biochemistry, School of Biomedical Sciences, University of Otago, Dunedin, New Zealand

<sup>6</sup>Haematology Unit, Cancer Research Centre, Institute for Medical Research, Ministry of Health Malaysia, Kuala Lumpur, Malaysia

<sup>7</sup>Department of Otorhinolaryngology, Sarawak General Hospital, Ministry of Health Malaysia, Jalan Hospital, Kuching, Sarawak, Malaysia

<sup>8</sup>Department of Otorhinolaryngology, Queen Elizabeth Hospital, Ministry of Health Malaysia, Kota Kinabalu, Sabah, Malaysia

<sup>9</sup>Department of Otorhinolaryngology, Kuala Lumpur Hospital, Ministry of Health Malaysia, Kuala Lumpur, Malaysia

<sup>10</sup>Department of Surgery, Clinical Campus Faculty of Medicine and Health Sciences, University Putra Malaysia at Kuala Lumpur Hospital, Ministry of Health Malaysia, Kuala Lumpur, Malaysia

<sup>11</sup>Department of Otorhinolaryngology, Selayang Hospital, Ministry of Health Malaysia, Batu Caves, Selangor, Malaysia

<sup>12</sup>Department of Otorhinolaryngology, Pulau Pinang Hospital, Ministry of Health Malaysia, Georgetown, Pulau Pinang, Malaysia

<sup>13</sup>Gleneagles Kuala Lumpur Hospital, Kuala Lumpur, Malaysia

<sup>14</sup>Sunway Medical Centre, Bandar Sunway, Selangor, Malaysia

**Author contributions:** L.P.T., G.W.T., S.V.M., S.L.G., C.S.L., T.B.B.M.M., C.C.N. conducted experiments and acquired experimental data. W.R.K., X.J.N., N.S.M.D., C.S.H.O., C.Y.W., C.A.O., Y.Y.Y., F.H., K.C.P., C.E.K. and the M.N.C.S.G. recruited patients, acquired and interpreted clinical data. L.P.T. and G.W.T. analyzed and interpreted data. L.P.T. wrote the manuscript. A.S.B.K. and G.W.T. critically reviewed and improved the manuscript.

**Additional Supporting Information** may be found in the online version of this article.

**Key words:** systematic comparison, biomarkers, early detection, prognosis, Epstein–Barr virus, nasopharyngeal carcinoma

**Abbreviations:** AJCC: American Joint Committee on Cancer; ASR: age standardized rate; AUC: area under curve; EA: early antigen; EBNA-1: EBV nuclear antigen 1; EBV: Epstein–Barr virus; ICC: intraclass correlation coefficient; LMICs: low- and middle-income countries; NPC: nasopharyngeal carcinoma; qPCR: quantitative polymerase chain reaction; ROC: receiver operating characteristic; RT: reverse transcription; VCA: viral capsid antigen

**Conflict of interest:** The authors declare no conflict of interest.

<sup>†</sup>Hospital Pulau Pinang: K.C. Pua (Project Leader), S. Subathra, N. Punithavati, B.S. Tan, Y.S. Ee, L.M. Ong, R.A. Hamid, M. Goh, J.C.T. Quah, J. Lim; Hospital Kuala Lumpur/Universiti Putra Malaysia: Y.Y. Yap, B.D. Dipak, R. Deepak, F.N. Lau, P.V. Kam, S. Shri Devi; Queen Elizabeth Hospital: C.A. Ong, C.L. Lum, Ahmad NA, Halimuddin S., M. Somasundran, A. Kam, M. Wodjin; Sarawak General Hospital/Universiti Malaysia Sarawak: S.K. Subramaniam, T.S. Tiong, T.Y. Tan, U.H. Sim, T.W. Tharumalingam, D. Norlida, M. Zulkarnaen, W.H. Lai; University of Malaya: G. Gopala Krishnan, C.C. Ng, A.Z. Bustam, S. Marniza, P. Shahfinaz, O. Hashim, S. Shamshinder, N. Prepageran, L.M. Looi, O. Rahmat, J. Amin, J. Maznan; Hospital Universiti Sains Malaysia: S. Hassan, B.Biswal; Cancer Research Initiatives Foundation: S.H. Teo, L. F. Yap; Institute for Medical Research: A.S.B. Khoo (Program Leader), A. Munirah, A. Subasri, L.P. Tan, W.R. Kim, X.J. Ng, V.M. Sivanesan, A.A. Anuar, F.I. Abdul Rahman, C.S.H. Ong, N.A. Adam, H. Siti Khodijah, M.D. Nor Soleha, S. Chew, G.W. Tan, N.M. Kumaran, M.S. Nurul Ashikin, M.S. Nursyazwani, B. Norhasimah, R. Sasela Devi, S. Shri Devi, C.Y. Koh.

**Grant sponsor:** Ministry of Health Malaysia; **Grant numbers:** NMRR-11-597-9667, NMRR-12-1183-14034, NMRR-16-1439-30762

This is an open access article under the terms of the Creative Commons Attribution-NonCommercial License, which permits use, distribution and reproduction in any medium, provided the original work is properly cited and is not used for commercial purposes.

DOI: 10.1002/ijc.32656

**History:** Received 8 Mar 2019; Accepted 15 Aug 2019; Online 8 Aug 2019

**Correspondence to:** Tan Lu Ping, Molecular Pathology Unit, Cancer Research Centre, Institute for Medical Research, Ministry of Health Malaysia, Jalan Pahang, 50588 Kuala Lumpur, Malaysia, Tel.: +603-2616-2727, Fax: +603-2616-2536, E-mail: luping@imr.gov.my

Nasopharyngeal carcinoma (NPC) is originated from the epithelial cells of nasopharynx, Epstein–Barr virus (EBV)-associated and has the highest incidence and mortality rates in Southeast Asia. Late presentation is a common issue and early detection could be the key to reduce the disease burden. Sensitivity of plasma EBV DNA, an established NPC biomarker, for Stage I NPC is controversial. Most newly reported NPC biomarkers have neither been externally validated nor compared to the established ones. This causes difficulty in planning for cost-effective early detection strategies. Our study systematically evaluated six established and four new biomarkers in NPC cases, population controls and hospital controls. We showed that BamHI-W 76 bp remains the most sensitive plasma biomarker, with 96.7% (29/30), 96.7% (58/60) and 97.4% (226/232) sensitivity to detect Stage I, early stage and all NPC, respectively. Its specificity was 94.2% (113/120) against population controls and 90.4% (113/125) against hospital controls. Diagnostic accuracy of BamHI-W 121 bp and ebv-miR-BART7-3p were validated. Hsa-miR-29a-3p and hsa-miR-103a-3p were not, possibly due to lower number of advanced stage NPC cases included in this subset. Decision tree modeling suggested that combination of BamHI-W 76 bp and VCA IgA or EA IgG may increase the specificity or sensitivity to detect NPC. EBNA1 99 bp could identify NPC patients with poor prognosis in early and advanced stage NPC. Our findings provided evidence for improvement in NPC screening strategies, covering considerations of opportunistic screening, combining biomarkers to increase sensitivity or specificity and testing biomarkers from single sampled specimen to avoid logistic problems of resampling.

#### What's new?

Plasma Epstein–Barr virus (EBV) DNA is an established nasopharyngeal carcinoma (NPC) biomarker, but not all cases are associated with EBV and its sensitivity for stage I NPC remains controversial. Meanwhile, most newly-reported NPC biomarkers have neither been externally validated nor compared to established biomarkers. This study systematically evaluates six established and four new biomarkers in NPC cases, population controls, and hospital controls. The findings provide evidence to policymakers for improvement in NPC screening and monitoring strategies, covering considerations of opportunistic screening, combining biomarkers to increase sensitivity/specificity, and testing multiple biomarkers on single specimens to avoid the logistic problems of resampling.

#### Background

Nasopharyngeal carcinoma (NPC) is an epithelial malignancy originating from the fossa of Rosenmüller of the nasopharynx. Its distribution is geographically distinct, with natives of Borneo Island, people in Southeast Asia and the Southern part of China having high age standardized rate (ASR) but is uncommon in most part of the world.<sup>1,2</sup> Among the top 20 countries with highest incidence and mortality rates of NPC,<sup>3</sup> 17 are low- and middle-income countries (LMICs), 10 of which are located in Southeast Asia. It is known that the family members of NPC patients have two to nine folds higher risk in developing NPC.<sup>4–7</sup> The lowest social class group had 4.1 odds ratio in developing NPC.<sup>8</sup> NPC is radiosensitive when treated early, with 5-year overall survival rate ranging from 78% to 100% (early stage) to as low as 26% (late stage and recurrent cases).<sup>9–11</sup> Recently, a study revealed that over 75% of cancer patients in Southeast Asia experienced death or financial catastrophe within 1 year of cancer diagnosis, mainly due to the lack of early detection and affordable cancer care.<sup>12</sup> As the majority of NPC patients present at late stage,<sup>13</sup> early detection could be the key to reduce the disease burden caused by NPC in LMICs.

Interaction among genes, environmental exposure and the Epstein–Barr virus (EBV) are the key events leading to NPC pathogenesis. Majority of NPC cases (>95%, except for the WHO keratinizing NPC subtype) are associated with EBV.<sup>14</sup> EBV is

commonly detected in the tumor cells, blood and urine of NPC patients.<sup>15</sup> Over decades of research, EBV serology and plasma EBV DNA tests have become the established circulating biomarkers known to have high diagnostic performance in distinguishing NPC from controls.<sup>15</sup> Recent evidences showed that combination of serum viral capsid antigen (VCA) IgA and EBV nuclear antigen 1 (EBNA-1) IgA tests by ELISA could outperform single serology marker test in a case–control study<sup>16</sup> as well as in a cluster randomized screening trial<sup>17</sup> among the southern Chinese populations. The percentage of early stage NPC cases (Stages I and II) detected by the combination of these two serology markers during screening were higher (68.3%) as compared to unscreened populations in the screening towns (36.0%) and control towns (25.7%).<sup>17</sup> However, the seropositive rate of about 3% in a screening setting may still lead to a considerable burden on the resource low health care system in LMICs to conduct close follow-up for individuals with positive screening results. Meanwhile, plasma EBV DNA test is long known to have high sensitivity and specificity to distinguish NPC from controls when optimal experimental protocols were carried out, but there were concerns about its utility in detecting early stage NPC and recurrent NPC.<sup>15,18</sup> Of note, these EBV DNA case–control studies analyzed small sample size of Stage I NPC cases.<sup>15,19</sup> Recently, a large NPC screening study conducted in Hong Kong demonstrated that plasma EBV DNA test (BamHI-

W 76 bp) could identify a significantly higher proportion of participants with early stage NPC as compared to the unscreened historical cohort (70.6% vs. 19.2%).<sup>20</sup> The same study group subsequently reported that EBV DNA fragment size profiles of NPC patients are different from the small subset of general population who was transiently positive for plasma EBV DNA.<sup>21</sup>

According to the US National Cancer Institute's Early Detection Research Network, there are five phases for developing and validating biomarkers.<sup>22</sup> Despite the established EBV DNA tests and EBV serology tests which had already reach Phase 5 (Cancer Control), the pursuit of new NPC biomarkers continues for two main reasons: (i) keratinizing NPC subtype and recurrent NPC have reduced or absence of biomarkers originating from EBV,<sup>15</sup> and (ii) EBV is also associated with many other diseases<sup>23</sup> and biomarkers of non-EBV origin may help to reduce the false positive rate. Among the newly reported circulating biomarkers for NPC, serum ebv-BART2-5p, plasma ebv-miR-BART7-3p, ebv-miR-BART13-3p, hsa-miR-29a-3p, hsa-miR-103a-3p, hsa-miR-483-5p and hsa-let-7c had moderately good diagnostic accuracy (area under curve [AUC] > 0.7) in detecting NPC against controls.<sup>24–26</sup> Meanwhile, other newly reported circulating biomarkers had AUC < 0.7,<sup>27–29</sup> were identified from studies with normalization methods which are sub-optimal for circulating biomarkers<sup>30,31</sup> and/or required additional processing or enrichment steps.<sup>19,32</sup> The reliability and diagnostic accuracy of these new biomarkers for early detection of NPC await validation by external independent studies (Phase 2, Clinical Assay and Validation) and should be evaluated together with the established EBV DNA and serology tests.

Malaysia is a country inhabited by multiethnic groups with different ASRs of NPC. Highest ASR of NPC (30 per 100,000) was observed in Bidayuh males, followed by Bidayuh females, Chinese males, Iban males and Kadazan males (10–20 per 100,000). Malay males, Chinese females, Iban females and Kadazan females have intermediate ASR of NPC (3.3–5.9 per 100,000), while lowest ASR of NPC (0.6–1.3 per 100,000) was observed in Malay females, Indian males and females.<sup>33–35</sup> According to the Malaysian National Cancer Registry Report 2007–2011, NPC was the cancer with the highest ASR among Malaysian men between 26 and 45 years old.<sup>35</sup> Despite the progress of NPC screening studies in southern China, NPC screening is yet to be adopted in Malaysia, due to less characterized population baseline values and uncertainty in the application of single or combination of biomarkers for screening. In Malaysia, histological examination of nasoendoscopic biopsy samples remains the gold standard to diagnose NPC. Computerized tomography is limited to major centers while magnetic resonance imaging and positron emission tomography are not routinely available to most NPC patients. Due to the confusing and nonspecific nature of early stage NPC symptoms,<sup>13</sup> as well as the invasive and difficult accessibility of nasoendoscopic biopsy tests mandatory to confirm the presence of tumor (nasoendoscopy is only performed by trained otorhinolaryngologists in major centers), late presentation is a common issue.<sup>13</sup>

Our study aimed to evaluate the diagnostic performance of six established NPC biomarkers, consisting of two EBV DNA

(BamHI-W 76 bp and *EBNA1* 99 bp) and four anti-EBV antibodies (early antigen [EA] IgA, EA IgG, EBNA-1 IgA and VCA IgA), in local NPC cases, population controls and hospital controls. In addition, the performance of four newly reported NPC biomarkers, including one EBV DNA (BamHI-W 121 bp) and three miRNAs (ebv-miR-BART7-3p, hsa-miR-29a-3p and hsa-miR-103a-3p) were evaluated in a subset of our study. It is hoped that single or combination of tests optimal for early detection and prognosis of NPC can be identified to improve strategies for NPC screening and monitoring.

## Materials and Methods

### Participants and blood samples collection

Participants were recruited from hospitals and National Blood Bank from year 2008 to 2017. Ethics approval was obtained from the Medical Research and Ethics Committee, Ministry of Health Malaysia. Signed informed consent was obtained from histologically confirmed NPC patients, population controls (apparently healthy asymptomatic individuals) and hospital controls (patients without any cancer, EBV related diseases or ear-nose-throat diseases). Blood samples were collected in EDTA tubes and processed within 4 hr. Blood tubes were centrifuged at room temperature for 10 min at 2,500 RPM, and plasma aliquoted into separate cryogenic tubes and stored at  $-80^{\circ}\text{C}$ . The numbers of samples analyzed for each test are stated in Table 1. Staging for NPC was based on the American Joint Committee on Cancer (AJCC) 7th edition and completion of radical treatment was defined as receiving a minimum of 66 Gy of radiotherapy. Survival information was retrieved from National Registration Department, Ministry of Home Affairs.

### Measurement of plasma anti-EBV antibodies using ELISA

Plasma VCA IgA, EBNA-1 IgA, EA IgA and EA IgG were measured according to manufacturer's instructions (IBL International, Hamburg, Germany). The microtiter strips of VCA IgA (RE57341), EBNA-1 IgA (RE57321), EA IgA (RE56211) and EA IgG (RE57311) ELISA kits were pre-coated with VCA gp 125 affinity purified from P3HR1 cells, recombinant EBNA-1 p72 antigen expressed in Sf9-cells, an immunodominant region of EA-D which was affinity purified from RAJI cells, and recombinant EA p54 expressed in *Escherichia coli*, respectively. First, plasma samples were diluted in diluent buffer (1:401). Standard, control or diluted samples were aliquoted (100  $\mu\text{l}$  each) into duplicate wells of microtiter plates, followed by 60 min incubation at  $25^{\circ}\text{C}$  or  $37^{\circ}\text{C}$  and three times washing (each time with 350  $\mu\text{l}$  wash buffer per well). Then, 30 min or 1 hr incubation with 100  $\mu\text{l}$  of enzyme conjugate was carried out at  $25^{\circ}\text{C}$  or  $37^{\circ}\text{C}$ , followed by another washing step as described previously. Twenty or 30 min incubation with 100  $\mu\text{l}$  of 3,3',5,5'-tetramethylbenzidine substrate solution was subsequently carried out in the dark and the reaction was stopped by addition of 100  $\mu\text{l}$  stop solution. Optical density was measured at 450 nm and average results from duplicate wells were calculated. Levels of anti-EBV antibodies in Unit/ml were interpolated from standard curve.

Table 1. Diagnostic performance of 10 plasma biomarkers for detection of NPC

Comparison	BamHI-W 76 bp								
	Cutoff	TP	FN	TN	FP	Accuracy	Sensitivity	Specificity	AUC
Stage I NPC vs. PC	>0 copy/ml	29	1	113	7	94.7%	96.7%	94.2%	0.9726
Stages I and II NPC vs. PC	>0 copy/ml	58	2	113	7	95.0%	96.7%	94.2%	0.9756
All NPC vs. PC	>0 copy/ml	226	6	113	7	96.3%	97.4%	94.2%	0.9832
Stage I NPC vs. HC	>0 copy/ml	29	1	113	12	91.6%	96.7%	90.4%	0.9615
Stages I and II NPC vs. HC	>0 copy/ml	58	2	113	12	92.4%	96.7%	90.4%	0.9679
All NPC vs. HC	>0 copy/ml	226	6	113	12	95.0%	97.4%	90.4%	0.9796
Comparison	EBNA1 99 bp								
	Cutoff	TP	FN	TN	FP	Accuracy	Sensitivity	Specificity	AUC
Stage I NPC vs. PC	>0 copy/ml	22	8	119	1	94.0%	73.3%	99.2%	0.8650
Stages I and II NPC vs. PC	>0 copy/ml	48	12	119	1	92.8%	80.0%	99.2%	0.8988
All NPC vs. PC	>0 copy/ml	200	32	119	1	90.6%	86.2%	99.2%	0.9303
Stage I NPC vs. HC	>0 copy/ml	22	8	124	1	94.2%	73.3%	99.2%	0.8608
Stages I and II NPC vs. HC	>0 copy/ml	48	12	124	1	93.0%	80.0%	99.2%	0.8941
All NPC vs. HC	>0 copy/ml	200	32	124	1	90.8%	86.2%	99.2%	0.9281
Comparison	EA IgA								
	Cutoff	TP	FN	TN	FP	Accuracy	Sensitivity	Specificity	AUC
Stage I NPC vs. PC	<1,006 U/ml <sup>1</sup>	4	4	83	29	72.5%	50.0%	74.1%	0.5368
Stages I and II NPC vs. PC	>1,852 U/ml	17	13	81	31	69.0%	56.7%	72.3%	0.6226
All NPC vs. PC	>1,510 U/ml	136	53	71	41	68.8%	72.0%	63.4%	0.6835
Stage I NPC vs. HC	>823.0 U/ml	7	1	44	9	83.6%	87.5%	83.0%	0.8514
Stages I and II NPC vs. HC	> 815.0 U/ml	27	3	44	9	85.5%	90.0%	83.0%	0.9094
All NPC vs. HC	>1,002 U/ml	172	17	48	5	90.9%	91.0%	90.6%	0.9567
Comparison	EBNA-1 IgA								
	Cutoff	TP	FN	TN	FP	Accuracy	Sensitivity	Specificity	AUC
Stage I NPC vs. PC	>6,147 U/ml	4	4	107	6	91.7%	50.0%	94.7%	0.6565
Stages I and II NPC vs. PC	>4,409 U/ml	10	19	100	13	77.5%	34.5%	88.5%	0.6196
All NPC vs. PC	>5,217 U/ml	58	130	104	9	53.8%	30.9%	92.0%	0.6476
Stage I NPC vs. HC	>5,080 U/ml	4	4	50	3	88.5%	50.0%	94.3%	0.7476
Stages I and II NPC vs. HC	>2,988 U/ml	15	14	48	5	76.8%	51.7%	90.6%	0.7586
All NPC vs. HC	>1,791 U/ml	117	71	43	10	66.4%	62.2%	81.1%	0.7886
Comparison	EA IgG								
	Cutoff	TP	FN	TN	FP	Accuracy	Sensitivity	Specificity	AUC
Stage I NPC vs. PC	>1,605 U/ml	8	0	60	52	56.7%	100.0%	53.6%	0.7031
Stages I and II NPC vs. PC	>1,575 U/ml	28	2	60	52	62.0%	93.3%	53.6%	0.7991
All NPC vs. PC	>5,322 U/ml	156	34	84	28	79.5%	82.1%	75.0%	0.8612
Stage I NPC vs. HC	>1,642 U/ml	8	0	50	3	95.1%	100.0%	94.3%	0.9670
Stages I and II NPC vs. HC	>1,481 U/ml	28	2	49	4	92.8%	93.3%	92.5%	0.9415
All NPC vs. HC	>1,642 U/ml	185	5	50	3	96.7%	97.4%	94.3%	0.9765
Comparison	VCA IgA								
	Cutoff	TP	FN	TN	FP	Accuracy	Sensitivity	Specificity	AUC
Stage I NPC vs. PC	>731.5 U/ml	8	0	71	42	65.3%	100.0%	62.8%	0.7378
Staged I and II NPC vs. PC	>731.5 U/ml	27	2	71	42	69.0%	93.1%	62.8%	0.7667
All NPC vs. PC	>731.5 U/ml	180	8	71	42	83.4%	95.7%	62.8%	0.7979
Stage I NPC vs. HC	>1,055 U/ml	6	2	51	2	93.4%	75.0%	96.2%	0.9033
Stages I and II NPC vs. HC	>964.5 U/ml	25	4	50	3	91.5%	86.2%	94.3%	0.9115
All NPC vs. HC	>1,022 U/ml	170	18	51	2	91.7%	90.4%	96.2%	0.9498

(Continues)

**Table 1.** Diagnostic performance of 10 plasma biomarkers for detection of NPC (Continued)

<b>BamHI-W 121 bp</b>									
<b>Comparison</b>	<b>Cutoff</b>	<b>TP</b>	<b>FN</b>	<b>TN</b>	<b>FP</b>	<b>Accuracy</b>	<b>Sensitivity</b>	<b>Specificity</b>	<b>AUC</b>
Stage I NPC vs. PC	>0 copy/ml	14	6	48	1	89.9%	70.0%	98.0%	0.8459
Stages I and II NPC vs. PC	>0 copy/ml	28	8	48	1	89.4%	77.8%	98.0%	0.8861
All NPC vs. PC	>0 copy/ml	48	14	48	1	86.5%	77.4%	98.0%	0.8845
Stage I NPC vs. HC	>0 copy/ml	14	6	8	4	68.8%	70.0%	66.7%	0.6333
Stages I and II NPC vs. HC	>0 copy/ml	28	8	8	4	75.0%	77.8%	66.7%	0.6736
All NPC vs. HC	>0 copy/ml	48	14	8	4	75.7%	77.4%	66.7%	0.7218
<b>ebv-miR-BART7-3p</b>									
<b>Comparison</b>	<b>Cutoff</b>	<b>TP</b>	<b>FN</b>	<b>TN</b>	<b>FP</b>	<b>Accuracy</b>	<b>Sensitivity</b>	<b>Specificity</b>	<b>AUC</b>
Stage I NPC vs. PC	>5.565 FCOD	15	4	38	5	85.5%	78.9%	88.4%	0.8550
Stages I and II NPC vs. PC	>4.145 FCOD	30	5	31	12	78.2%	85.7%	72.1%	0.8399
All NPC vs. PC	>4.085 FCOD	52	19	31	12	72.8%	73.2%	72.1%	0.7737
Stage I NPC vs. HC	ND	ND	ND	ND	ND	ND	ND	ND	ND
Stages I and II NPC vs. HC	ND	ND	ND	ND	ND	ND	ND	ND	ND
All NPC vs. HC	ND	ND	ND	ND	ND	ND	ND	ND	ND
<b>hsa-miR-29a-3p</b>									
<b>Comparison</b>	<b>Cutoff</b>	<b>TP</b>	<b>FN</b>	<b>TN</b>	<b>FP</b>	<b>Accuracy</b>	<b>Sensitivity</b>	<b>Specificity</b>	<b>AUC</b>
Stage I NPC vs. PC	>9.760 FCOD <sup>1</sup>	6	12	23	0	70.7%	33.3%	100.0%	0.6763
Stages I and II NPC vs. PC	>9.760 FCOD <sup>1</sup>	9	23	23	0	58.2%	28.1%	100.0%	0.5639
All NPC vs. PC	<8.200 FCOD	25	21	15	8	58.0%	54.3%	65.2%	0.5071
Stage I NPC vs. HC	ND	ND	ND	ND	ND	ND	ND	ND	ND
Stages I and II NPC vs. HC	ND	ND	ND	ND	ND	ND	ND	ND	ND
All NPC vs. HC	ND	ND	ND	ND	ND	ND	ND	ND	ND
Stages II to IVC NPC vs. PC	<8.300 FCOD	22	6	14	9	70.6%	78.6%	60.9%	0.6250
<b>hsa-miR-103a-3p</b>									
<b>Comparison</b>	<b>Cutoff</b>	<b>TP</b>	<b>FN</b>	<b>TN</b>	<b>FP</b>	<b>Accuracy</b>	<b>Sensitivity</b>	<b>Specificity</b>	<b>AUC</b>
Stage I NPC vs. PC	>10.89 FCOD <sup>1</sup>	5	13	20	3	61.0%	27.8%	87.0%	0.5060
Stages I and II NPC vs. PC	<9.270 FCOD	19	13	15	8	61.8%	59.4%	65.2%	0.5618
All NPC vs. PC	<9.390 FCOD	31	15	15	8	66.7%	67.4%	65.2%	0.6144
Stage I NPC vs. HC	ND	ND	ND	ND	ND	ND	ND	ND	ND
Stages I and II NPC vs. HC	ND	ND	ND	ND	ND	ND	ND	ND	ND
All NPC vs. HC	ND	ND	ND	ND	ND	ND	ND	ND	ND
Stages II to IVC NPC vs. PC	<9.390 FCOD	22	6	15	8	72.5%	78.6%	65.2%	0.6918

All cutoff values were calculated based on Youden index from ROC analysis except BamHI-W 76 bp, EBNA-1 99 bp and BamHI-W 121 bp which had cutoff set as >0 copy/ml.

<sup>1</sup>Cutoff is not practical due to biomarker not suitable for detection of early stage NPC.

Abbreviations: FCOD, fold change over detection limit; HC, hospital controls; PC, population controls; ND, not determined.

### Plasma DNA and RNA extractions

Frozen plasma samples were thawed and centrifuged at room temperature for 10 min at 3,000 RPM to remove any cell debris prior to DNA or RNA extractions. DNA extraction from 200 to 400 µl plasma per sample was performed using QIAamp DNA Mini kit, while automated extraction of RNA from 400 µl plasma per sample was carried out using miRNeasy Micro Kit with QIAcube according to manufacturer's protocols (Qiagen, Hilden, Germany). In order to account for possible plasma RNA extraction bias, 500 attomole of synthetic miRNA cel-miR-39 (Integrated DNA Technologies, Coralville, IA) was

spiked into all plasma samples after mixing with QIAzol from the miRNeasy Micro Kit (Qiagen). All DNA and RNA samples were eluted in 50 and 25 µl of nuclease free water (Qiagen), respectively.

### Quantification of plasma EBV DNA level

Three EBV DNA tests with different primers and hydrolysis probes were conducted in our study (Supporting Information Table S1). Quantitative polymerase chain reaction (qPCR) was carried out using TaqMan Fast Advanced Master Mix in the ABI7500 Fast Real-Time PCR system (Applied Biosystems, Foster

Table 2. Comparison of decision tree models and single tests for the detection and prognosis of NPC

Biomarker test	Diagnostic performance											Cutoff											
	Decision tree algorithm	Growing method	BamHI-W as first testing criteria	Validation	BamHI-W 76 bp	EBNA1 99 bp	EA IgG	EA IgA	VCA IgA	EBNA-1 IgA	Name		True negative	False negative	True positive	False positive	Accuracy	Sensitivity	Specificity	AUC	BamHI-W 76 bp (copy/ml)	EBNA1 99 bp (copy/ml)	EA IgG (U/ml)
Detection of NPC <sup>1</sup>	Classification and Regression Trees with Gini Impurity measure	PN ≥ 50, CN ≥ 2, TD ≤ 5	No	20-fold CV	+	-	-	-	-	-	Model 1	106	7	0	180	97.6%	96.3%	100.0%	ND	>0.2459	NA	NA	>512.6
			Yes	50% train	+	-	-	-	-	-	Model 2	45	2	0	102	98.7%	98.1%	100.0%	ND	>0.1810	NA	NA	NA
	Classification and Regression Trees with Twofold impurity measure	PN ≥ 50, CN ≥ 2, TD ≤ 3	No	20-fold CV	+	-	-	-	-	-	Model 3	106	7	0	180	97.6%	96.3%	100.0%	ND	>0.2459	NA	NA	>512.6
			Yes	50% train	+	-	-	-	-	-	Model 4	60	0	0	88	100.0%	100.0%	100.0%	ND	>0.6786	NA	NA	>541.8
Prognosis of NPC <sup>2</sup>	CHAID with likelihood ratio Chi-square statistics	PN ≥ 50, CN ≥ 2, TD ≤ 3	No	20-fold CV	+	-	-	-	-	-	Model 5	102	4	4	183	97.3%	97.9%	96.2%	ND	>0	NA	NA	NA
			Yes	50% train	+	-	-	-	-	-	Model 6	94	1	12	186	95.6%	99.5%	88.7%	ND	>0	NA	>97,619	NA
	BamHI-W 76 bp	PN ≥ 50, CN ≥ 2, TD ≤ 5	No	20-fold CV	-	+	-	-	-	-	Model 7	44	1	1	91	98.5%	98.9%	97.8%	ND	>0	NA	NA	NA
			Yes	50% test	+	-	-	-	-	-	Model 8	58	3	3	92	96.2%	96.8%	95.1%	ND	>0.987	>0	NA	NA
Prognosis of NPC <sup>2</sup>	Classification and Regression Trees with Gini Impurity measure	PN ≥ 50, CN ≥ 2, TD ≤ 5	No	20-fold CV	-	+	-	-	-	-	Model 9	31	8	16	25	70.0%	75.8%	66.0%	ND	NA	>14,0598	NA	NA
			Yes	50% train	-	+	-	-	-	-	Model 10	15	5	10	16	67.4%	76.2%	60.0%	ND	NA	>14,0451	NA	NA
	Classification and Regression Trees with Twofold impurity measure	PN ≥ 50, CN ≥ 2, TD ≤ 3	No	20-fold CV	-	+	-	-	-	-	Model 11	31	8	16	25	70.0%	75.8%	66.0%	ND	NA	>14,0598	NA	NA
			Yes	50% train	-	+	-	-	-	-	Model 12	19	3	7	14	76.7%	82.4%	73.1%	ND	NA	>14,0598	NA	NA
Prognosis of NPC <sup>2</sup>	CHAID with likelihood ratio Chi-square statistics	PN ≥ 50, CN ≥ 2, TD ≤ 3	No	20-fold CV	-	+	-	-	-	-	Model 13	31	9	16	24	68.8%	72.7%	66.0%	ND	NA	>14,4270	NA	NA
			Yes	50% train	-	+	-	-	-	-	Model 13	24	13	3	6	65.2%	31.6%	88.9%	ND	NA	>137,998	NA	NA
	EBNA1 99 bp	PN ≥ 50, CN ≥ 2, TD ≤ 3	No	20-fold CV	-	+	-	-	-	-	Model 13	16	7	4	7	67.6%	50.0%	80.0%	ND	NA	>14,0600	NA	NA
			Yes	50% test	-	+	-	-	-	-	Model 13	31	8	16	25	70.0%	75.8%	66.0%	0.709	NA	>14,0600	NA	NA
Prognosis of NPC <sup>2</sup>	BamHI-W 76 bp	PN ≥ 50, CN ≥ 2, TD ≤ 3	No	20-fold CV	-	+	-	-	-	-	Model 13	31	9	16	24	68.8%	72.7%	66.0%	ND	NA	>14,4270	NA	NA
			Yes	50% train	-	+	-	-	-	-	Model 13	24	13	3	6	65.2%	31.6%	88.9%	ND	NA	>137,998	NA	NA
	EA IgA	PN ≥ 50, CN ≥ 2, TD ≤ 3	No	20-fold CV	-	+	-	-	-	-	Model 13	16	7	4	7	67.6%	50.0%	80.0%	ND	NA	>14,0600	NA	NA
			Yes	50% test	-	+	-	-	-	-	Model 13	31	8	16	25	70.0%	75.8%	66.0%	0.709	NA	>14,0600	NA	NA
Prognosis of NPC <sup>2</sup>	EA IgG	PN ≥ 50, CN ≥ 2, TD ≤ 3	No	20-fold CV	-	+	-	-	-	-	Model 13	31	9	16	24	68.8%	72.7%	66.0%	ND	NA	>14,4270	NA	NA
			Yes	50% train	-	+	-	-	-	-	Model 13	24	13	3	6	65.2%	31.6%	88.9%	ND	NA	>137,998	NA	NA
	EBNA-1 IgA	PN ≥ 50, CN ≥ 2, TD ≤ 3	No	20-fold CV	-	+	-	-	-	-	Model 13	16	7	4	7	67.6%	50.0%	80.0%	ND	NA	>14,0600	NA	NA
			Yes	50% test	-	+	-	-	-	-	Model 13	31	8	16	25	70.0%	75.8%	66.0%	0.709	NA	>14,0600	NA	NA
Prognosis of NPC <sup>2</sup>	VCA IgA	PN ≥ 50, CN ≥ 2, TD ≤ 3	No	20-fold CV	-	+	-	-	-	-	Model 13	31	9	16	24	68.8%	72.7%	66.0%	ND	NA	>14,4270	NA	NA
			Yes	50% train	-	+	-	-	-	-	Model 13	24	13	3	6	65.2%	31.6%	88.9%	ND	NA	>137,998	NA	NA
	EA IgG	PN ≥ 50, CN ≥ 2, TD ≤ 3	No	20-fold CV	-	+	-	-	-	-	Model 13	16	7	4	7	67.6%	50.0%	80.0%	ND	NA	>14,0600	NA	NA
			Yes	50% test	-	+	-	-	-	-	Model 13	31	8	16	25	70.0%	75.8%	66.0%	0.709	NA	>14,0600	NA	NA
Prognosis of NPC <sup>2</sup>	EBNA-1 IgA	PN ≥ 50, CN ≥ 2, TD ≤ 3	No	20-fold CV	-	+	-	-	-	-	Model 13	31	9	16	24	68.8%	72.7%	66.0%	ND	NA	>14,4270	NA	NA
			Yes	50% train	-	+	-	-	-	-	Model 13	24	13	3	6	65.2%	31.6%	88.9%	ND	NA	>137,998	NA	NA
	VCA IgA	PN ≥ 50, CN ≥ 2, TD ≤ 3	No	20-fold CV	-	+	-	-	-	-	Model 13	16	7	4	7	67.6%	50.0%	80.0%	ND	NA	>14,0600	NA	NA
			Yes	50% test	-	+	-	-	-	-	Model 13	31	8	16	25	70.0%	75.8%	66.0%	0.709	NA	>14,0600	NA	NA

<sup>1</sup>Data set included 187 NPC patients and 106 population controls who had test results of six established biomarkers. Positive = NPC; Negative = Population control.

<sup>2</sup>Data set included 80 NPC patients who completed radical treatment, had overall survival information and test results of six established biomarkers. Positive = Dead; Negative = Alive.

Abbreviations: +, included in decision tree; -, not included in decision tree; CHAID, Chi-square Automatic Interaction Detector; CN, child node; CV, cross validation; NA, not applicable; ND, not determined; PN, parental node; TD, tree depth.

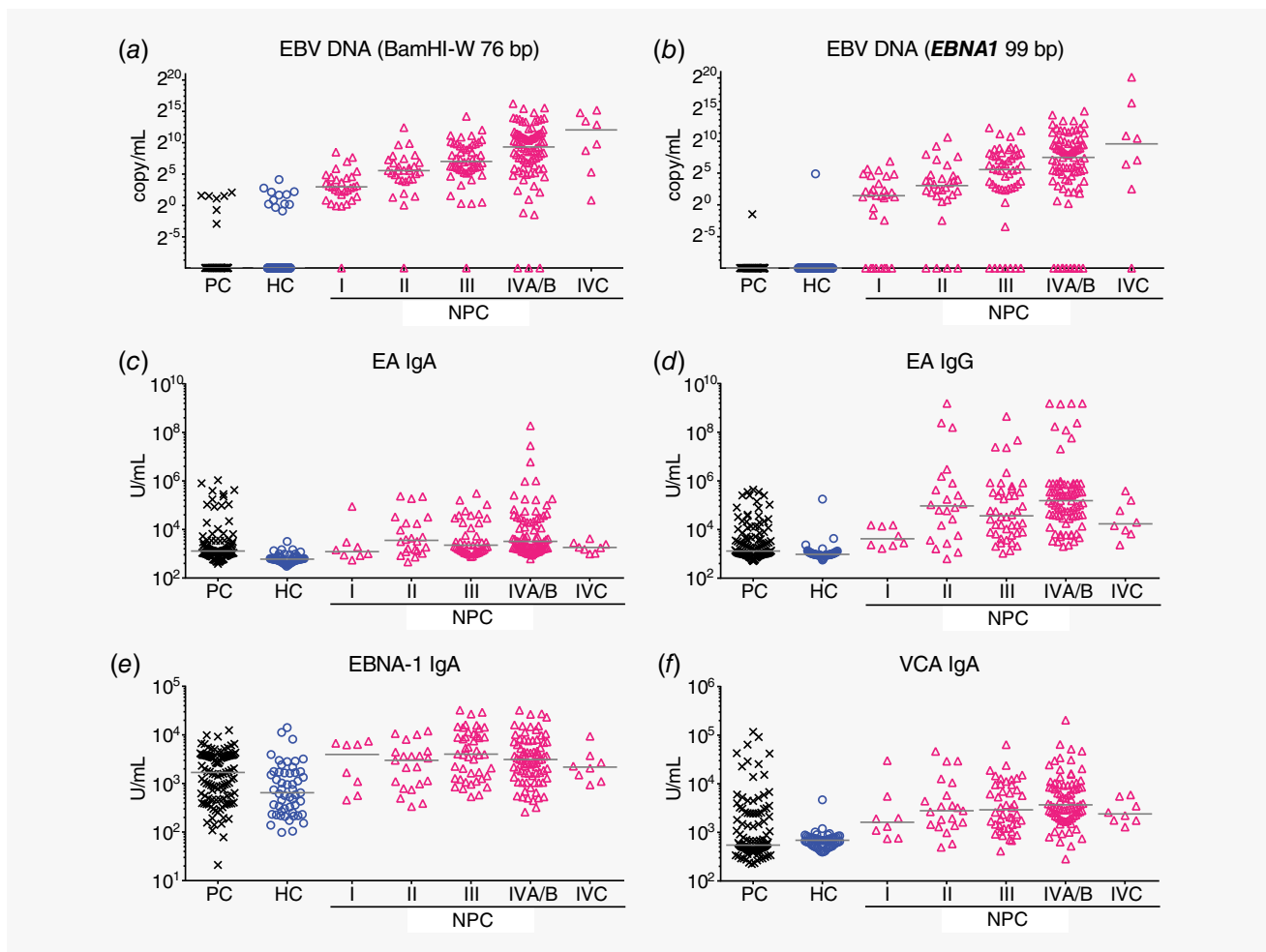
City, CA) according to manufacturer's instructions. A total of 5  $\mu$ l eluted DNA was used in 20  $\mu$ l total reaction volume in each qPCR well, and each sample was analyzed in triplicate wells. Each qPCR plate contained no-template-control and serially diluted Namalwa cell DNA samples as standard points for the construction of EBV DNA copy number standard curve. Namalwa cells are known to have two integrated EBV genomes per cell.<sup>36</sup> Accurate dilution of Namalwa cell DNA standard points and quantification of EBV copy numbers by *EBNA1* 99 bp test were validated by calibrating these Namalwa cell DNA standard points to the 1st WHO International Standard for EBV for Nucleic Acid Amplification Techniques<sup>37</sup> (NIBSC code: 09/260, Supporting Information Table S2). Thermal cycling conditions include 50°C for 2 min, 95°C for 20 sec, and 40 cycles of 95°C for 3 sec and 56°C for 30 sec. EBV DNA copy number was interpolated from the Namalwa cell DNA standard curve and plasma EBV DNA level was calculated using the following formula:

$$\text{Plasma EBV DNA level, copy/ml} = \left[ \frac{(\text{average } C_q - c)}{m} \right] \times (V_e/V_f) \times 1/a$$

where  $c$  = intercept,  $m$  = slope of the standard curve,  $V_e$  = DNA elution volume,  $V_f$  = final DNA volume used per qPCR well,  $a$  = ml of plasma used for DNA extraction.

#### RT-qPCR validation of differential miRNA expression

Pooled reverse transcription (RT) of cel-miR-39, hsa-miR-29a-3p and hsa-miR-103a-3p was carried out using commercially available assays (Applied Biosystems) according to optimized protocol which showed high reliability and consistency.<sup>38,39</sup> RT protocol, primers and probe sequences of ebv-miR-BART7-3p were according to Zhang *et al.*<sup>24</sup> RT products of each sample, negative and positive controls were analyzed in duplicate wells using TaqMan 2X Universal PCR Master Mix, No AmpErase UNG in ABI7500 Fast Real-Time



**Figure 1.** Evaluation of established plasma biomarkers to detect NPC against controls in our study. (a, b) Only low levels of plasma EBV DNA was observed in small subset of population controls and hospital controls. The levels of plasma EBV DNA increased with the stages of NPC. (c–f) NPC patients generally had higher plasma levels of anti-EBV antibodies as compared to controls but no obvious trend within NPC subgroups was observed. Samples with undetectable plasma BamHI-W 76 bp and plasma EBNA1 99 bp were arbitrarily set as 0.001 copy/ml. HC, hospital control; PC, population control. [Color figure can be viewed at [wileyonlinelibrary.com](http://wileyonlinelibrary.com)]



PCR system (Applied Biosystems) according to manufacturer's instructions. Data were normalized to cel-miR-39 (spike-in control) and fold change over detection limit was calculated.<sup>38,39</sup>

### Statistical analysis

In GraphPad Prism software, Mann–Whitney test was used to compare the mean rank differences between NPC and controls. AUC values were generated from receiver operating characteristic (ROC) curve analysis. In SPSS software, intraclass correlation coefficient (ICC) was obtained from average-measurement, absolute-agreement, two-way mixed-effects model. Decision tree models for NPC detection and prediction of overall survival were built with sample size, decision tree growing methods, criteria and validation parameters stated in Table 2.

### Data availability

The data that support the findings of our study are available from the corresponding author upon reasonable request.

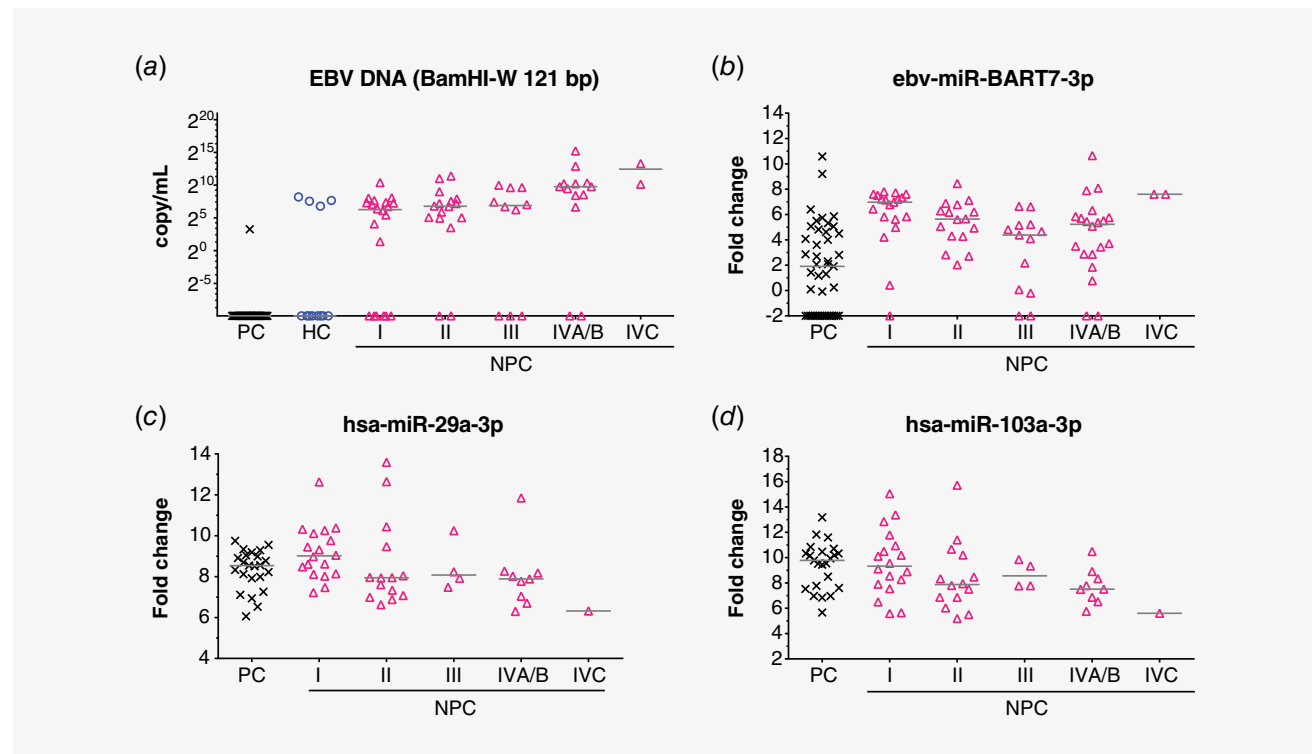
## Results

### Plasma EBV DNA

Demographic and clinicopathological characteristics of NPC patients and controls are shown in Supporting Information

Table S3. All 10 plasma biomarkers analyzed in our study did not correlate with age and were not significantly different between different sex and ethnic groups (Supporting Information Table S4). In our hands, results of EBV DNA test from DNA extraction replicates had excellent test–retest reliability (ICC > 0.95, Supporting Information Fig. S1a). We also found that prior to plasma processing, plasma EBV DNA load was fairly stable up to 6 hr in EDTA blood tube kept on bench at room temperature (Supporting Information Fig. S1b).

Comparison of plasma EBV DNA load as measured by two established EBV DNA tests (BamHI-W 76 bp and *EBNA1* 99 bp, Figs. 1a and 1b) were carried out between NPC patients and controls. In general, plasma EBV DNA loads were significantly higher in NPC patients compared to controls, and only low levels of plasma EBV DNA load was observed in a small subset of controls (Figs. 1a and 1b). The level of plasma EBV DNA increases with more advanced stages (Figs. 1a and 1b). Similar to the large cohort NPC screening study in Hong Kong,<sup>20</sup> plasma EBV DNA load of >0 copy/ml was set as positive for both plasma EBV DNA tests (Table 1). This resulted in 94.2% and 99.2% specificity, respectively for BamHI-W 76 bp and *EBNA1* 99 bp to identify NPC against population controls. Specificity for BamHI-W 76 bp and *EBNA1* 99 bp to identify



**Figure 2.** Evaluation of newly reported plasma biomarkers to detect NPC against controls in our study subset. (a) Plasma EBV DNA trend as measured by BamHI-W 121 bp is similar to the other two EBV DNA tests in Figure 1. (b) NPC patients generally had higher plasma levels of ebv-miR-BART7-3p. A portion of healthy donors also had detectable level of plasma ebv-miR-BART7-3p. (c, d) Decreasing plasma levels of hsa-miR-29a-3p and hsa-miR-103a-3p were observed from early stage NPC to advanced stage NPC. Plasma levels of these two human miRNAs were not significantly different between population controls and Stage I NPC ( $p > 0.05$ ). Samples with undetectable plasma BamHI-W 121 bp were arbitrarily set as 0.001 copy/ml and samples with undetectable plasma ebv-miR-BART7-3p were arbitrarily set as  $-2$  fold change over detection limit. HC, hospital control; PC, population control. [Color figure can be viewed at [wileyonlinelibrary.com](http://wileyonlinelibrary.com)]

NPC against hospital controls were 90.4% and 99.2%, respectively (Table 1). BamHI-W 76 bp being the EBV DNA test with highest sensitivity to detect NPC had 96.7% (29/30) sensitivity to detect Stage I NPC, 96.7% (58/60) sensitivity to detect early stage (Stages I and II) NPC and 97.4% (226/232) sensitivity to detect all NPC (Table 1). Based on recent findings that NPC patients had significantly longer fragment lengths of plasma EBV DNA compared to non-NPCs,<sup>21</sup> the new BamHI-W 121 bp test was evaluated in a subset of our study samples with more early stage NPC cases as well as cases with false positive results as determined by the two common EBV DNA tests (Fig. 2a). When testing NPC against controls, improved specificity but decreased sensitivity was found with BamHI-W 121 bp as compared to BamHI-W 76 bp (Supporting Information Fig. S2).

### Plasma anti-EBV antibodies

Moderately good to excellent test-retest reliability (ICC of 0.837–0.998) was achieved by commercially available ELISA tests measuring plasma VCA IgA, EBNA-1 IgA, EA IgA and EA IgG (Supporting Information Fig. S1c).

Comparison of ELISA results between NPC patients and controls showed that plasma level of anti-EBV antibodies was generally higher in NPC patients as compared to controls. No obvious trend was observed across different NPC stages and high levels of plasma anti-EBV antibodies were observed in some controls (Figs. 1c–1f). Among these four anti-EBV antibody tests

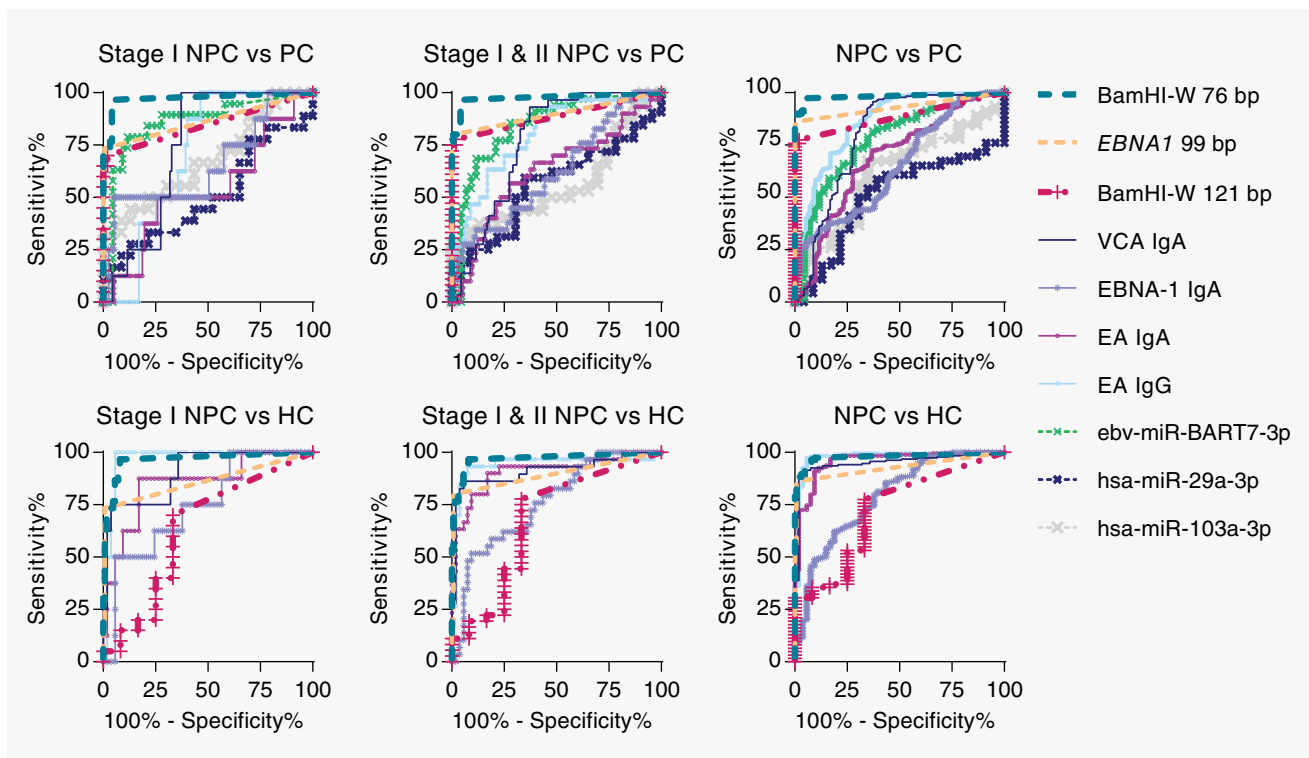
evaluated in our study, VCA IgA and EA IgG consistently had higher AUC values to detect early stage NPC against all controls, while EBNA-1 IgA consistently showed the lowest AUC values among the established biomarkers (Fig. 3 and Table 1).

### Plasma miRNAs

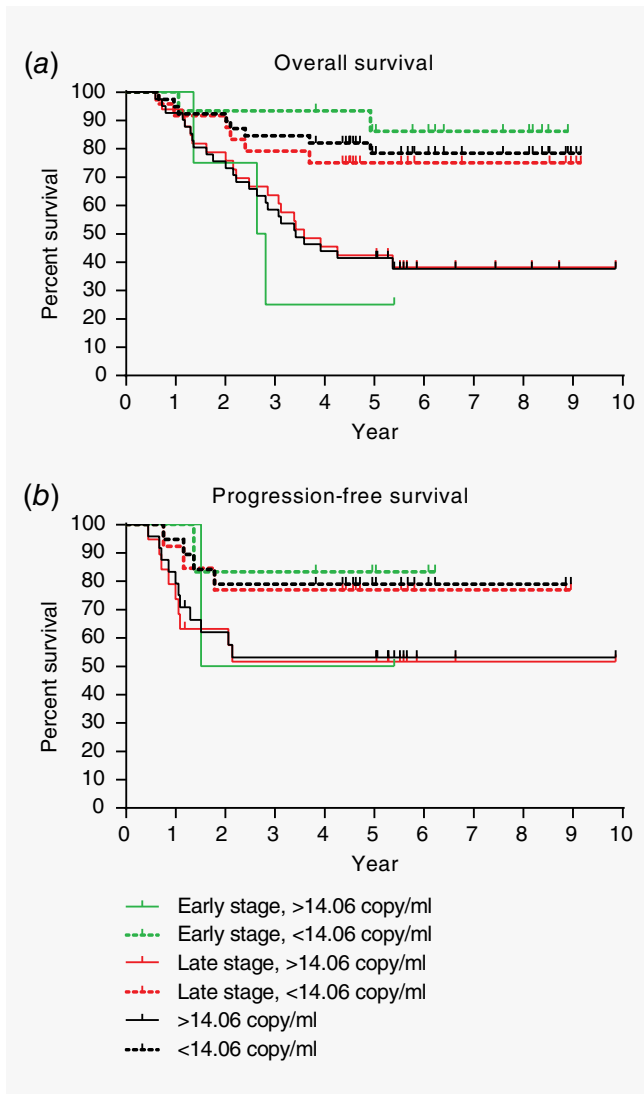
Plasma ebv-miR-BART7-3p, hsa-miR-29a-3p and hsa-miR-103a-3p were shortlisted for validation in a subset of our study samples enriched with more early stage NPC cases (Table 1). In general, plasma ebv-miR-BART7-3p levels were higher in NPC compared to population controls and a portion of population controls also had detectable plasma ebv-miR-BART7-3p (Fig. 2b and Table 1). Similar median levels of plasma hsa-miR-29a-3p and hsa-miR-103a-3p were observed between population controls and Stage I NPC (Figs. 2c and 2d). It appeared that there was a decreasing trend in plasma hsa-miR-29a-3p and hsa-miR-103a-3p with the advancement of NPC stage (Figs. 2c and 2d).

### Combination of plasma biomarkers for the detection of NPC

In order to evaluate if combination of plasma biomarkers may improve NPC detection, decision tree modeling was carried out on our data set comprising of 187 NPC cases and 106 population controls with available results of six plasma biomarkers (Table 2 and Supporting Information Table S3). BamHI-W 76 bp test alone appeared to be sufficient for the detection of NPC, and appeared to be essential in all seven decision tree models (Table 2). Models 2, 5



**Figure 3.** ROC analysis of 10 plasma biomarkers. BamHI-W 76 bp test (dark green dash line) consistently appeared to be the test with highest AUC values while EBNA-1 IgA (purple line) consistently appeared to be the test with lowest AUC values among the six established biomarkers. AUC values and numbers of test subjects can be viewed in Table 1. [Color figure can be viewed at wileyonlinelibrary.com]



**Figure 4.** Prognostic value of EBNA1 99 bp test. NPC patients with plasma EBNA1 99 bp >14.06 copy/ml had poorer (a) overall survival and (b) progression-free survival as compared to those with less plasma EBNA1 99 bp level. EBNA1 99 bp is a good prognostic marker regardless of early or late stages. [Color figure can be viewed at [wileyonlinelibrary.com](http://wileyonlinelibrary.com)]

and 7 suggested that BamHI-W 76 bp test alone is sufficient (Table 2). Models 1, 3, and 4 suggested that combining VCA IgA with BamHI-W 76 bp test can improve specificity at the expense of reduced sensitivity while Model 6 suggested that combining EA IgG with BamHI-W 76 bp test can further increase sensitivity at the expense of decreased specificity (Table 2 and Supporting Information Fig. S3).

#### Plasma EBV DNA load as a prognosis marker for NPC overall survival

Survival information and test results of six plasma biomarkers were available for a subset of our NPC cases who had completed radical treatment ( $n = 80$ , Supporting Information Table S3).

ROC analysis and decision tree modeling were carried out to evaluate if any of these six plasma biomarkers had prognostic value for the survival of these NPC patients (Table 2). According to ROC analysis, EBNA1 99 bp was the only biomarker with AUC > 0.7 (Table 2). With a cutoff at 14.06 copy/ml, EBNA1 99 bp could identify NPC patients with poor overall survival (Fig. 4a) as well as poor progression-free survival (Fig. 4b) in both early stage and late stage NPC (Fig. 4). Decision tree modeling supported findings from this ROC analysis, revealing that EBNA1 99 bp with cutoff at about 14 copy/ml (Models 8–12) is sufficient for prognosis of survival while increasing EBNA1 99 bp cutoff to 138 copy/ml (Model 13) led to higher specificity but lower sensitivity in prognosis of survival (Table 2). Notably, EBNA1 99 bp with cutoff at about 14 copy/ml was still the only biomarker chosen by decision tree modeling even though additional information including age, sex, ethnicity, WHO type and AJCC staging were added into the analysis (data not shown).

#### Discussion

In our study, 10 plasma biomarkers (BamHI-W 76 bp, BamHI-W 121 bp, EBNA1 99 bp, EA IgA, EA IgG, EBNA-1 IgA, VCA IgA, ebv-miR-BART7-3p, hsa-miR-29a-3p and hsa-miR-103a-3p) were systematically analyzed for early detection and prognosis of NPC. These included established and newly reported NPC biomarkers of EBV and human origin.

To our knowledge, published case-control studies which reported 50–86% sensitivity of plasma EBV DNA test for Stage I NPC had only analyzed two to 22 cases.<sup>15,19</sup> Our study which include larger sample size of Stage I NPC ( $n = 30$ ) for plasma EBV DNA test revealed 96.7% (29/30) sensitivity to detect Stage I NPC. Besides larger sample size, our improved sensitivity findings may be due to lower qPCR platform detection limit (25 copy/ml) achieved with usage of more advanced qPCR master mix in our study as compared to other studies.<sup>15,19</sup> Our findings from comparison of BamHI-W 121 bp test and BamHI-W 76 bp test (Supporting Information Fig. S2) support the notion that the larger the qPCR amplicon size, the more specific but less sensitive is the EBV DNA qPCR test. This is consistent with the findings reported earlier which compared the performance of EBNA1 213 bp test and EBNA1 99 bp test.<sup>40</sup> It is estimated that increase in input volume by eight times may compensate the sensitivity issue of BamHI-W 121 bp test as compared to BamHI-W 76 bp test, hypothetically from qPCR  $C_q$  40 (undetected) to  $C_q$  37, but will incur higher cost and larger effort in sample processing and DNA extraction. Interestingly, four hospital controls were positive in both plasma BamHI-W 76 bp and BamHI-W 121 bp tests (Supporting Information Fig. S2). It is possible that these tests were sensitive enough to detect NPC in cases which were too early to be detected clinically. A follow-up on these individuals to check on event of NPC will be interesting.

In the EBV genome, there is only one copy of EBNA1 gene while BamHI-W region may be reiterated by 7 to 11 repeats.<sup>41</sup> Prevalent EBV in different populations may differ in the numbers of BamHI-W region repeats, making prognostic cutoff value of

pretreatment plasma BamHI-W 76 bp level deduced from one cohort not optimal for another cohort.<sup>42–44</sup> If plasma BamHI-W 76 bp test results are intended to be used for prognosis, EBV DNA clearance rate calculated from pretreatment and posttreatment plasma EBV DNA load may be analyzed to rule out interindividual variability. Indeed, in a systematic review and meta-analysis on the prognosis of NPC by plasma BamHI-W 76 bp test, Zhang *et al.* showed that cutoff for EBV DNA clearance rate was comparable among studies cohort.<sup>42</sup> In our study, pretreatment plasma *EBNA1* 99 bp and BamHI-W 76 bp tests had similar prognostic values (AUC 0.709 and 0.680, respectively). Unlike BamHI-W 76 bp test, pretreatment plasma *EBNA1* 99 bp test is not affected by interindividual variability and do not require multiple sampling to calculate EBV DNA clearance rate. It would be interesting to investigate if the cutoff value of pretreatment plasma *EBNA1* 99 bp level deduced in our study is applicable to future follow-up studies.

Our study had served as an external independent study and validated the diagnostic performance of two newly reported biomarkers (BamHI-W 121 bp and ebv-miR-BART7-3p). Specificity of ebv-miR-BART7-3p appeared to be less optimal as it was detected in about 28% (12/43) of population controls (Table 1), which is in line with recent findings from Ramayanti *et al.*<sup>32</sup> but not Gao *et al.*<sup>29</sup> The discrepancy may be due to the differences in PCR primers. Meanwhile the diagnostic performance of hsa-miR-29a-3p and hsa-miR103a-3p reported elsewhere<sup>25</sup> could not be reproduced in our study, possibly due to inclusion of more early stage NPC and less advanced stage NPC in our analysis. Consistent with findings from a previous report,<sup>25</sup> differences in plasma hsa-miR-29a-3p levels seemed to be more apparent only when comparing controls to advanced stage NPC (Fig. 2c). It is possible that four other miRNAs (ebv-BART2-5p, ebv-miR-BART13-3p, hsa-miR-483-5p and hsa-let-7c) that are not included for validation in our study may perform well as early diagnosis markers for NPC. EBV DNA markers are already well established for NPC screening. From a clinical utility viewpoint, the additional value of

including non-EBV markers may be higher than the additional value of including another EBV marker in the NPC detection panel. Our study indicates that much effort is still needed to identify a combination panel of EBV markers and non-EBV markers that will benefit the detection of not only the majority of NPC cases which are EBV positive but also the small subset of NPC cases which are EBV negative.

## Conclusions

Our study provides important information to policy makers in LMICs who have limited health care resources to plan a more cost-effective NPC screening and monitoring strategy for the apparently healthy asymptomatic controls. We showed that the diagnostic performance of established biomarkers to detect NPC in local general population were comparable to findings of studies from another NPC endemic area<sup>15</sup> and plasma BamHI-W 76 bp test is superior for early detection of NPC. Comparison of plasma biomarkers in NPC patients and local hospital controls suggests that plasma EBV DNA test could identify NPC cases among individuals who visit the hospital for other conditions in local setting, thus allowing for opportunistic screening. Combined biomarker tests from single sampled specimens can improve NPC detection specificity (with slight decrease in sensitivity) and avoid logistic problems of resampling. Plasma *EBNA1* 99 bp test may have important prognostic value and could be used to stratify NPC patients for different clinical management.

## Acknowledgements

The authors thank the Director General of Health Malaysia for his approval of the publication of this article. The authors also thank the Director of Institute for Medical Research Malaysia for her support in this study. The authors are grateful to all staff from the Molecular Pathology unit, Biospecimen Bank at the Institute for Medical Research and hospitals involved in this study for their assistance in sample and data collection.

## References

- Devi BC, Pisani P, Tang TS, et al. High incidence of nasopharyngeal carcinoma in native people of Sarawak, Borneo Island. *Cancer Epidemiol Biomarkers Prev* 2004;13:482–6.
- Yu MC. Nasopharyngeal carcinoma: epidemiology and dietary factors. *IARC Sci Publ* 1991;105:39–47.
- Bray F, Ferlay J, Soerjomataram I, et al. Global cancer statistics 2018: GLOBOCAN estimates of incidence and mortality worldwide for 36 cancers in 185 countries. *CA Cancer J Clin* 2018;68:394–424.
- Liu Z, Chang ET, Liu Q, et al. Quantification of familial risk of nasopharyngeal carcinoma in a high-incidence area. *Cancer* 2017;123:2716–25.
- Jia WH, Feng BJ, Xu ZL, et al. Familial risk and clustering of nasopharyngeal carcinoma in Guangdong. *China Cancer* 2004;101:363–9.
- Friborg J, Wohlfahrt J, Koch A, et al. Cancer susceptibility in nasopharyngeal carcinoma families—a population-based cohort study. *Cancer Res* 2005;65:8567–72.
- Liu Z, Fang F, Chang ET, et al. Cancer risk in the relatives of patients with nasopharyngeal carcinoma—a register-based cohort study in Sweden. *Br J Cancer* 2015;112:1827–31.
- Armstrong RW, Imrey PB, Lye MS, et al. Nasopharyngeal carcinoma in Malaysian Chinese: salted fish and other dietary exposures. *Int J Cancer* 1998;77:228–35.
- Chee Ee Phua V, Loo WH, Yusof MM, et al. Treatment outcome for nasopharyngeal carcinoma in University Malaya Medical Centre from 2004–2008. *Asian Pac J Cancer Prev* 2013;14:4567–70.
- El-Sherbieny E, Rashwan H, Lubis SH, et al. Prognostic factors in patients with nasopharyngeal carcinoma treated in Hospital Kuala Lumpur. *Asian Pac J Cancer Prev* 2011;12:1739–43.
- Cheah SK, Lau FN, Yusof MM, et al. Treatment outcome with brachytherapy for recurrent nasopharyngeal carcinoma. *Asian Pac J Cancer Prev* 2014;14:6513–8.
- ACTION Study Group, Kimman M, Jan S, et al. Catastrophic health expenditure and 12-month mortality associated with cancer in Southeast Asia: results from a longitudinal study in eight countries. *BMC Med* 2015;13:190.
- Pua KC, Khoo AS, Yap YY, et al. Nasopharyngeal carcinoma database. *Med J Malaysia* 2008;63:59–62.
- Stelow EB, Wenig BM. Update from the 4th edition of the World Health Organization classification of head and neck tumours: nasopharynx. *Head Neck Pathol* 2017;11:16–22.
- Yip TT, Ngan RK, Fong AH, et al. Application of circulating plasma/serum EBV DNA in the clinical management of nasopharyngeal carcinoma. *Oral Oncol* 2014;50:527–38.
- Liu Y, Huang Q, Liu W, et al. Establishment of VCA and EBNA1 IgA-based combination by enzyme-linked immunosorbent assay as preferred screening method for nasopharyngeal carcinoma: a two-stage design with a preliminary

- performance study and a mass screening in southern China. *Int J Cancer* 2012;131:406–16.
17. Liu Z, Ji MF, Huang QH, et al. Two Epstein-Barr virus-related serologic antibody tests in nasopharyngeal carcinoma screening: results from the initial phase of a cluster randomized controlled trial in Southern China. *Am J Epidemiol* 2013; 177:242–50.
  18. Leung SF, Lo YM, Chan AT, et al. Disparity of sensitivities in detection of radiation-naive and postirradiation recurrent nasopharyngeal carcinoma of the undifferentiated type by quantitative analysis of circulating Epstein-Barr virus DNA1,2. *Clin Cancer Res* 2003;9:3431–4.
  19. Yang X, Dai W, Kwong DL, et al. Epigenetic markers for noninvasive early detection of nasopharyngeal carcinoma by methylation-sensitive high resolution melting. *Int J Cancer* 2015; 136:E127–35.
  20. Chan KCA, Woo JKS, King A, et al. Analysis of plasma Epstein-Barr virus DNA to screen for nasopharyngeal cancer. *N Engl J Med* 2017; 377:513–22.
  21. Lam WKJ, Jiang P, Chan KCA, et al. Sequencing-based counting and size profiling of plasma Epstein-Barr virus DNA enhance population screening of nasopharyngeal carcinoma. *Proc Natl Acad Sci U S A* 2018;115:E5115–E24.
  22. Wagner PD, Srivastava S. New paradigms in translational science research in cancer biomarkers. *Trans Res* 2012;159:343–53.
  23. Khan G, Hashim MJ. Global burden of deaths from Epstein-Barr virus attributable malignancies 1990–2010. *Infect Agents Cancer* 2014;9:38.
  24. Zhang G, Zong J, Lin S, et al. Circulating Epstein-Barr virus microRNAs miR-BART7 and miR-BART13 as biomarkers for nasopharyngeal carcinoma diagnosis and treatment. *Int J Cancer* 2015; 136:E301–12.
  25. Wang HY, Yan LX, Shao Q, et al. Profiling plasma microRNA in nasopharyngeal carcinoma with deep sequencing. *Clin Chem* 2014;60:773–82.
  26. Jiang C, Chen J, Xie S, et al. Evaluation of circulating EBV microRNA BART2-5p in facilitating early detection and screening of nasopharyngeal carcinoma. *Int J Cancer* 2018;143:3209–17.
  27. He B, Zeng J, Chao W, et al. Serum long non-coding RNAs MALAT1, AFAP1-AS1 and AL359062 as diagnostic and prognostic biomarkers for nasopharyngeal carcinoma. *Oncotarget* 2017;8:41166–77.
  28. Zheng XH, Cui C, Ruan HL, et al. Plasma microRNA profiling in nasopharyngeal carcinoma patients reveals miR-548q and miR-483-5p as potential biomarkers. *Chin J Cancer* 2014; 33:330–8.
  29. Gao W, Wong TS, Lv KX, et al. Detection of Epstein-Barr virus (EBV)-encoded microRNAs in plasma of patients with nasopharyngeal carcinoma. *Head Neck* 2019;41:780–92.
  30. Liu X, Luo HN, Tian WD, et al. Diagnostic and prognostic value of plasma microRNA deregulation in nasopharyngeal carcinoma. *Cancer Biol Ther* 2013;14:1133–42.
  31. Gourzones C, Ferrand FR, Amiel C, et al. Consistent high concentration of the viral microRNA BART17 in plasma samples from nasopharyngeal carcinoma patients—evidence of non-exosomal transport. *Virology* 2013;10:119.
  32. Ramayanti O, Verkuijlen S, Novianti P, et al. Vesicle-bound EBV-BART13-3p miRNA in circulation distinguishes nasopharyngeal from other head and neck cancer and asymptomatic EBV-infections. *Int J Cancer* 2019;144:2555–66.
  33. Ooi CH, Mastulu W. *Epidemiology of cancer in Sarawak 2001–2005*. Sarawak: Sarawak Cancer Registry, Sarawak Health Department, 2009.
  34. Maria S, Nirmal K, Nafisah A, et al. *Sabah cancer registry report 2006–2010*. Sabah: Sabah Cancer Registry, Sabah State Health Department, 2015.
  35. Azizah AM, Nor Saleha IT, Noor Hashimah A, et al. In: Manan AA, ed. *Malaysian National Cancer Registry Report 2007–2011*. Malaysia: Ministry of Health Malaysia, 2016.
  36. Lawrence JB, Villnave CA, Singer RH. Sensitive, high-resolution chromatin and chromosome mapping in situ: presence and orientation of two closely integrated copies of EBV in a lymphoma line. *Cell* 1988;52:51–61.
  37. Fryer JF, Heath AB, Wilkinson DE, et al. A collaborative study to establish the 1st WHO International Standard for Epstein-Barr virus for nucleic acid amplification techniques. *Biologicals* 2016; 44:423–33.
  38. Tan GW, Khoo AS, Tan LP. Evaluation of extraction kits and RT-qPCR systems adapted to high-throughput platform for circulating miRNAs. *Sci Rep* 2015;5:9430.
  39. Tan GW, Tan LP. High-throughput RT-qPCR for the analysis of circulating MicroRNAs. *Methods Mol Biol* 2017;1580:7–19.
  40. Stevens SJ, Verkuijlen SA, Hariwiyanto B, et al. Diagnostic value of measuring Epstein-Barr virus (EBV) DNA load and carcinoma-specific viral mRNA in relation to anti-EBV immunoglobulin A (IgA) and IgG antibody levels in blood of nasopharyngeal carcinoma patients from Indonesia. *J Clin Microbiol* 2005;43:3066–73.
  41. Ryan JL, Fan H, Glaser SL, et al. Epstein-Barr virus quantitation by real-time PCR targeting multiple gene segments: a novel approach to screen for the virus in paraffin-embedded tissue and plasma. *J Mol Diagn* 2004;6:378–85.
  42. Zhang W, Chen Y, Chen L, et al. The clinical utility of plasma Epstein-Barr virus DNA assays in nasopharyngeal carcinoma: the dawn of a new era? A systematic review and meta-analysis of 7836 cases. *Medicine* 2015;94:e845.
  43. Zhang J, Shu C, Song Y, et al. Epstein-Barr virus DNA level as a novel prognostic factor in nasopharyngeal carcinoma: a meta-analysis. *Medicine* 2016;95:e5130.
  44. Lee VH, Kwong DL, Leung TW, et al. The addition of pretreatment plasma Epstein-Barr virus DNA into the 8th edition of nasopharyngeal cancer TNM stage classification. *Int J Cancer* 2018;144:1713–22.

6:43 PM DEC 01, 2022

THE MOMENT YOUR GUT INSTINCT  
WAS BACKED BY SCIENTIFIC  
RESULTS\_



## THE DIFFERENCE OF BREAKTHROUGH MOMENTS

**WITH COMPLETE SOLUTIONS FOR GROUNDBREAKING DISCOVERIES FROM A TRUSTED PARTNER.**

Your next breakthrough could be closer than you imagine, especially with the right resources to help you advance your research. At BD, we are dedicated to helping you get the data you need, when, where and how you need it. Our integrated solutions in instrumentation, software and reagents are optimized to work together to bring you closer to your next breakthrough moment. And you can depend on us for world-class training, service and support to help you get the most from the results your research depends on. Discover a range of optimized solutions that open endless possibilities for your future research. **Discover the new BD.**

Learn how you can advance your research >

