

University of Groningen

## The Many Routes to AGN Feedback

Morganti, Raffaella

*Published in:*  
Frontiers in astronomy and space sciences

*DOI:*  
[10.3389/fspas.2017.00042](https://doi.org/10.3389/fspas.2017.00042)

**IMPORTANT NOTE: You are advised to consult the publisher's version (publisher's PDF) if you wish to cite from it. Please check the document version below.**

*Document Version*  
Publisher's PDF, also known as Version of record

*Publication date:*  
2017

[Link to publication in University of Groningen/UMCG research database](#)

*Citation for published version (APA):*  
Morganti, R. (2017). The Many Routes to AGN Feedback. *Frontiers in astronomy and space sciences*, 4, [42]. <https://doi.org/10.3389/fspas.2017.00042>

### Copyright

Other than for strictly personal use, it is not permitted to download or to forward/distribute the text or part of it without the consent of the author(s) and/or copyright holder(s), unless the work is under an open content license (like Creative Commons).

### Take-down policy

If you believe that this document breaches copyright please contact us providing details, and we will remove access to the work immediately and investigate your claim.

*Downloaded from the University of Groningen/UMCG research database (Pure): <http://www.rug.nl/research/portal>. For technical reasons the number of authors shown on this cover page is limited to 10 maximum.*



# The Many Routes to AGN Feedback

Raffaella Morganti<sup>1,2\*</sup>

<sup>1</sup> *ASTRON, Netherlands Institute for Radio Astronomy, Dwingeloo, Netherlands,* <sup>2</sup> *Kapteyn Astronomical Institute, University of Groningen, Groningen, Netherlands*

The energy released by Active Galactic Nuclei (AGN) in the form of radiation, winds, or radio plasma jets, is known to impact on the surrounding interstellar medium. The result of these processes, known as AGN (negative) feedback, is suggested to prevent gas, in and around galaxies, from cooling, and to remove, or at least redistribute, gas by driving massive and fast outflows, hence playing a key role in galaxy evolution. Given its importance, a large effort is devoted by the astronomical community to trace the effects of AGN on the surrounding gaseous medium and to quantify their impact for different types of AGN. This review briefly summarizes some of the recent observational results obtained in different wavebands, tracing different phases of the gas. I also summarize the new insights they have brought, and the constraints they provide to numerical simulations of galaxy formation and evolution. The recent addition of deep observations of cold gas and, in particular, of cold molecular gas, has brought some interesting surprises and has expanded our understanding of AGN and AGN feedback.

## OPEN ACCESS

### Edited by:

Paola Marziani,  
Osservatorio Astronomico di Padova  
(INAF), Italy

### Reviewed by:

Vyacheslav Ivanovich Dokuchaev,  
Institute for Nuclear Research (RAS),  
Russia  
Anna Lia Longinotti,  
National Institute of Astrophysics,  
Optics and Electronics, Mexico

### \*Correspondence:

Raffaella Morganti  
morganti@astron.nl

### Specialty section:

This article was submitted to  
Milky Way and Galaxies,  
a section of the journal  
Frontiers in Astronomy and Space  
Sciences

**Received:** 09 September 2017

**Accepted:** 30 October 2017

**Published:** 29 November 2017

### Citation:

Morganti R (2017) The Many Routes  
to AGN Feedback.  
*Front. Astron. Space Sci.* 4:42.  
doi: 10.3389/fspas.2017.00042

**Keywords:** active galactic nuclei, interstellar medium, outflows, extragalactic radio jets, spectroscopy

## INTRODUCTION: AGN AND FEEDBACK

AGN are fascinating objects. Since more than 50 years, astronomers have studied the effects of the extreme processes and the conditions that they cause. The huge amounts of energy released by the active super massive black hole (SMBH) can have an impact on the life and evolution of their entire host galaxy. This has made AGN relevant for an even broader community of astronomers. What is now commonly called *AGN feedback* has become a key ingredient in simulations of galaxy evolution. AGN feedback is the (self-regulating) process which links the energy released by the AGN to the surrounding gaseous medium and in this way, impacting on the evolution of the host galaxy. The energy injected by the AGN can provide the mechanism, either by preventing the cooling of gas or by expelling gas from the galaxy, to quench star formation (thus limiting the number of massive galaxies) and to limit the growth of the SMBH. Thus, it helps explaining key observations in these areas obtained in the recent years (e.g., Silk and Rees, 1998; Gebhardt et al., 2000). In addition, the energy dumped in the environment of the AGN affects the fuelling of the nuclear activity itself, thereby regulating its duty-cycle.

AGN feedback is now included in many theoretical, numerical, and semi-analytic models (e.g., Kauffmann and Haehnelt, 2000; Di Matteo et al., 2005; Schaye et al., 2015; Sijacki et al., 2015). The goal of the observations is to provide constraints to help a realistic implementation of feedback effects in these simulations. This is still a challenging task. As described below, the results from the increasingly accurate and deep observations have shown how complex these processes are.

Interestingly, the study of AGN in the context of their feedback effects has brought a number of unexpected discoveries (some of them described in this review) about the physical conditions of the gas in the surroundings of an active nucleus. Given its complexity, the treatment of feedback in numerical simulations is still extremely difficult. However, the implementation is becoming more sophisticated and reaching the stage where observables can be extracted from the simulations and compared with observations.

This review will concentrate on recent results from observations at low redshift and will focus on *negative feedback*. The energy released by the AGN and the related feedback effect can operate on very different distances from the central, active SMBH and can be traced by different phases of the gas. Particular emphasis will be given to the new information provided by the cold molecular gas. The review starts by summarizing some of the results on the impact of the radio plasma on the hot and cold gas distributed on large (many tens to hundred of kpc) scales. A more extended part of the review is dedicated to outflows occurring in the inner regions (kpc-scale). The mechanisms that may drive these outflows and their effects on the ISM are discussed. Finally, two examples of the diversity of mechanisms obtained thanks to multi-wavelengths observations will be presented.

It is impossible in this short paper to do justice to all exciting results. However, several other reviews have extensively covered various aspects and results of AGN feedback (see e.g., Cattaneo et al., 2009; Alexander and Hickox, 2012; Fabian, 2012; Harrison, 2017) and the reader can refer to them for further information.

Before entering the description of the results from observations, it is important to note that, to first order, there are two modes in which AGN feedback can operate and they depend mostly on the type of nuclear activity (see Alexander and Hickox, 2012; Fabian, 2012; Harrison, 2017 for reviews). Examples of manifestations of these modes are described in section Feedback on Large (tens of kpc) Scales: Radio Lobes and X-ray Cavities and Effects of AGN on kpc Scales: Multi-Phase Gas Outflows.

The *quasar (or radiative) mode* is mostly associated with high luminosity AGN, i.e., those emitting close to the Eddington limit, where most of the energy is released by radiation (or a wind) from the accretion disk but where also radio jets can play a role. The release of energy drives gas outflows expelling gas from the galaxy. The *jet (or kinetic) mode* is, instead, considered to be dominant in low-power AGN where the radio plasma provides the main source of energy, preventing the gaseous atmosphere from cooling back into the galaxy. While in the most extreme cases—high luminosity AGN and cool-core clusters—the separation between the two modes can be clear-cut, in other more intermediate situations, and for the most common types of AGN, the separation may not be always so sharp. Multi-wavelengths observations are often needed to recognize and disentangle different modes of feedback. Furthermore, the luminosity (or radio power) of the AGN is not the only parameter defining the impact. The coupling between the energy released and the medium is important (Tadhunter, 2008; Alexander and Hickox, 2012) as well as the duty-cycle of the activity (Fabian, 2012; Morganti, 2017).

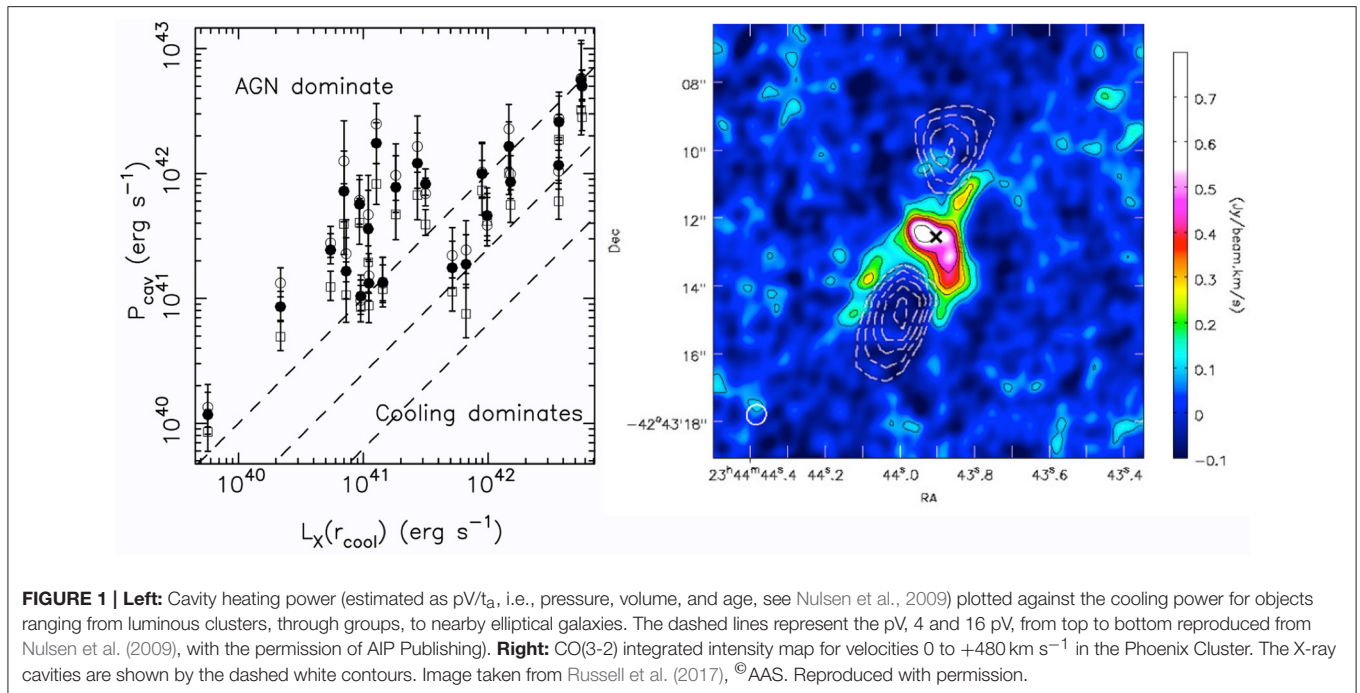
## FEEDBACK ON LARGE (TENS OF KPC) SCALES: RADIO LOBES AND X-RAY CAVITIES

The most clear observational evidence of the impact of the nuclear activity on the surrounding medium comes from X-ray

and radio observations, in particular in gas rich cool-core clusters (McNamara and Nulsen, 2007, 2012 for reviews). X-ray images have revealed giant cavities and shock fronts in the hot gas, often filled with radio plasma lobes. The spatial coincidence between these cavities and the emission from radio lobes, suggests that the hot gas has been displaced by the expanding radio bubbles inflated by radio jets emitted by the central active SMBH. These studies have shown that the power associated to the radio jet provides the mechanism to offset radiative losses and to suppress gas cooling. They have provided a direct and relatively reliable mean of measuring the energy injected by the AGN (see McNamara and Nulsen, 2007, 2012 for reviews). Given that the radiative cooling time at the centers of hot atmospheres in groups, clusters and elliptical galaxies can be short (ranging from < 1 Gyr to below 0.1 Gyr for the latter group), without this energy input, the gas would cool from the surrounding atmosphere. This will produce a large amount of molecular gas and star formation that instead is not observed in e.g., central cluster galaxies or any massive galaxy (Ciotti et al., 2017).

X-ray cavities are detected in about 50% of galaxy clusters, groups and individual galaxies. Their scales range from a few kpc to 200 kpc and the associated cavity power typically balances (or exceeds) the X-ray cooling in galaxy clusters and also in some isolated elliptical galaxies (see **Figure 1**, left). Furthermore, from the combined X-ray and radio studies, we have learned about the energetics involved. The mechanical power of radio jets largely exceeds their synchrotron power, suggesting that even weak radio sources—both in clusters and in elliptical galaxies—are mechanically powerful enough (Cavagnolo et al., 2010). Thus, this phenomenon appears to be important even in AGN of moderate radio luminosity. This is important because these AGN are much more common compared to the high power radio sources. Finally, it is worth to underline that the effect of the radio plasma can be relevant also in sources outside large clusters, as demonstrated by the work on isolated galaxies (e.g., Nulsen et al., 2007; Cavagnolo et al., 2010).

A small fraction (few %) of the most rapidly cooling gas in clusters is known to cool to low temperatures. This gas can provide the observed cold molecular gas reservoirs and feed the star formation in the central galaxy (Edge, 2001; Salomé and Combes, 2003). These initial findings are now, especially thanks to ALMA, expanded for more objects and they show a possible coupling between radio bubbles and cold gas. **Figure 1** (right) shows the case of the Phoenix cluster (Russell et al., 2017) where the extended filaments are draped around the expanding radio bubbles suggesting that the molecular gas flow is shaped by the radio-jet activity and possibly lifted by the radio bubbles. In the case of this cluster, the smooth velocity gradient observed in the filaments suggests an ordered flow with the gas velocities too low for the bulk of the cold gas to escape the galaxy. This gas will eventually fall back toward the galaxy center: this further supports the (short) duty cycle of activity observed especially for cluster radio sources (Hogan et al., 2015). An increasing number of ALMA observations of molecular gas at the centers of clusters have now shown this synergy, with cold gas filaments extending along the radio bubbles (McNamara et al., 2014; Russell et al., 2014, 2017; Tremblay et al., 2016).



This close coupling is essential to explain the self-regulation of feedback.

## EFFECTS OF AGN ON KPC SCALES: MULTI-PHASE GAS OUTFLOWS

Quenching star formation and stopping gas accretion onto the SMBH can also be achieved by massive outflows that can expel the gas from the central regions of galaxies. AGN-driven outflows, observed from pc to kpc scales, are known since a long time. The recent observations confirm that they are a relatively common phenomenon. Historically, they have been traced using mostly the ionized gas, observed in optical, UV and X-ray emission, and absorption lines (see Veilleux et al., 2005; Bland-Hawthorn et al., 2007; Tadhunter, 2008; King and Pounds, 2015 for reviews).

However, the most recent view that emerges from the continuously improving observations and by new or upgraded facilities—in particular radio and millimeter telescopes—is that the gas outflows are *truly complex and multi-phase*. The discovery of massive and fast outflows of cold gas (HI and cold molecular, Morganti et al., 2005; Feruglio et al., 2010) has taken everybody by surprise. Thus, different phases of the gas take part in the outflows and, in order to get the full picture of their physical properties, multi-wavelength observations are needed. An overview of what found in term of mass outflow rate and kinetic comparison for the various components of the outflows, is presented in Tadhunter (2008). This shows how important is to trace and measure all these components.

Furthermore, to fully gauge the impact of the outflows, both detailed single objects studies (see section The Variety of

Outflows through Two Case Studies) as well as observations of large samples are required. Below we start with a summary of some of the main results obtained using the different gas tracers.

## Ultra-Fast Outflows (UFO)

X-ray and UV observations have had, from the beginning, an important role in tracing outflows using absorption lines from ionized gas (Crenshaw et al., 2003; Costantini, 2010; Crenshaw and Kraemer, 2012; King and Pounds, 2015). About half of local Seyfert galaxies host a photoionized warm absorber (WA), which produces features detectable in soft X-ray ( $\sim 0.3$ – $2$  keV) spectra and in the UV band. The latter absorption lines are usually blueshifted several  $100 \text{ km s}^{-1}$  with respect of the systemic velocity, which indicates a global outflow of the absorbing gas with mass outflow rates in the range  $0.01$ – $0.06 M_{\odot} \text{ year}^{-1}$ . These values are often comparable to the mass accretion rate but they provide only a small fraction of the bolometric luminosity, i.e.,  $L_{\text{kin}} < 0.1\% L_{\text{bol}}$  (Costantini, 2010). Likely of higher impact are the highly ionized outflows with mildly relativistic velocities (i.e.,  $v \sim 0.1$ – $0.25c$ , where  $c$  is the speed of light) traced by highly blue-shifted X-ray absorption lines in the iron K band (Pounds et al., 2003; Reeves et al., 2009; Tombesi et al., 2011, 2012). These ultrafast outflows are also known as UFO (Tombesi et al., 2011). A blind search carried out in archival spectra of the XMM-Newton archive has shown that they are present in about 35% of Seyfert galaxies. They differ from classical WA because of the higher outflow velocity and of the higher ionization. Indirect arguments indicate that their location is at sub-pc scales, i.e.,  $\sim 0.0003$ – $0.03 \text{ pc}$  (see Reeves et al., 2009; Tombesi et al., 2011, 2012 and ref. therein).



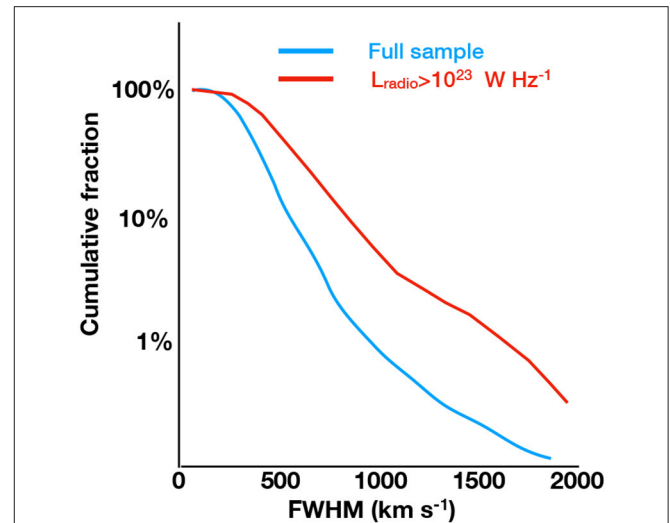
Thus, these highly ionized flows are originated in the inner regions of the AGN outflows, and are likely driven by wide-angle winds launched from the accretion disks, accelerated by radiation pressure (e.g., Elvis, 2000; King and Pounds, 2003; Proga and Kallman, 2004). Their mass outflow rate is in the range  $\sim 0.01\text{--}1 M_{\odot} \text{ year}^{-1}$  and the mechanical power is between  $\sim 10^{42}$  and  $10^{45} \text{ erg s}^{-1}$ . These values typically correspond to  $>0.5\%$   $L_{\text{bol}}$  (Tombesi et al., 2012; King and Pounds, 2015). Important is the connection with the large scale outflows: the UFO likely represent the inner wind, which would then drive the massive molecular outflow (see below) on larger distances (see e.g., Feruglio et al., 2015; Tombesi et al., 2015; Veilleux et al., 2017), making them very relevant for feedback (see also section The Variety of Outflows through Two Case Studies).

## Outflows of Warm Ionised Gas on Kpc Scales

Outflows of warm ( $T \sim 10^4 \text{ K}$ ) ionized gas have been observed in optical/IR lines and mostly traced, in low-redshifts objects, by the strong forbidden emission lines, e.g.,  $[\text{O III}]\lambda 5007$  (see also discussion in Zakamska and Greene, 2014). Outflows have been detected in  $\sim 30\%$  of Seyfert galaxies (e.g., Crenshaw et al., 2003, 2012; Crenshaw and Kraemer, 2007), but they are common also in AGN of different luminosity selected from spectroscopic surveys (Mullaney et al., 2013; e.g., Zakamska and Greene, 2014).

Radiative winds are considered often at the origin of these outflows (see below). However, other mechanisms are also observed. For example, radio plasma jets are known since early studies to affect the kinematics of the gas (e.g., Whittle, 1985; Holt et al., 2008; Nesvadba et al., 2008 for some examples). Interestingly, a connection between the radio luminosity and the presence of outflows has been seen also in samples not selected based on radio properties and including radio weak ( $L_{1.4\text{GHz}} = 10^{23}\text{--}10^{25} \text{ W Hz}^{-1}$ , Mullaney et al., 2013) or even radio-quiet ( $<10^{23} \text{ W Hz}^{-1}$ , Zakamska and Greene, 2014) objects. **Figure 2** shows the trend found by Mullaney et al. (2013). In such weak radio sources, the radio emission is typically small or confined to faint radio jets. In the case of the faintest objects, the radio may even be a by-product of the shocks associated to the outflows, as suggested by Zakamska and Greene (2014).

The mass outflow rates associated with the outflows of warm ionized gas are usually found to be modest (at most a few  $M_{\odot} \text{ year}^{-1}$ ). However, these values are affected by uncertainties, in particular on the density of the outflowing gas (Holt et al., 2011) and on the spatial extent of the outflows (Husemann et al., 2013). The latter is still a matter of debate. The outflows of warm ionized gas are seen to extent up to  $\sim 10 \text{ kpc}$  in the sample studied by Sun et al. (2017). On the other hand, for a sample of low-redshift QSOs, Husemann et al. (2013) found signatures of outflowing ( $>400 \text{ km s}^{-1}$ ) ionized gas on kpc scales only in three objects where a radio jet is most likely driving the outflow. These differences imply a wide range of energy efficiency for the outflows (e.g.,  $\eta = \dot{E}/L_{\text{bol}} = 0.01\text{--}30\%$  estimated by Sun et al., 2017). It is also interesting to note the suggestion that outflows are driven by AGN episodes with  $\sim 10^8$ -year durations and shorter flickers  $10^6 \text{ year}$  (Sun et al., 2017).



**FIGURE 2** | Trend of the fraction FWHM of the  $[\text{O III}]\lambda 5007$  lines for the AGN in Mullaney et al. (2013). The cyan line represents the entire sample while the red line illustrates that objects with  $\text{FWHM} > 1,000 \text{ km s}^{-1}$  are  $\approx 5$  times more prevalent among AGNs with  $L > 1,023 \text{ W Hz}^{-1}$  compared to the overall AGN population. The figure is based on data from Mullaney et al. (2013) and that no permission is required as the figure is original.

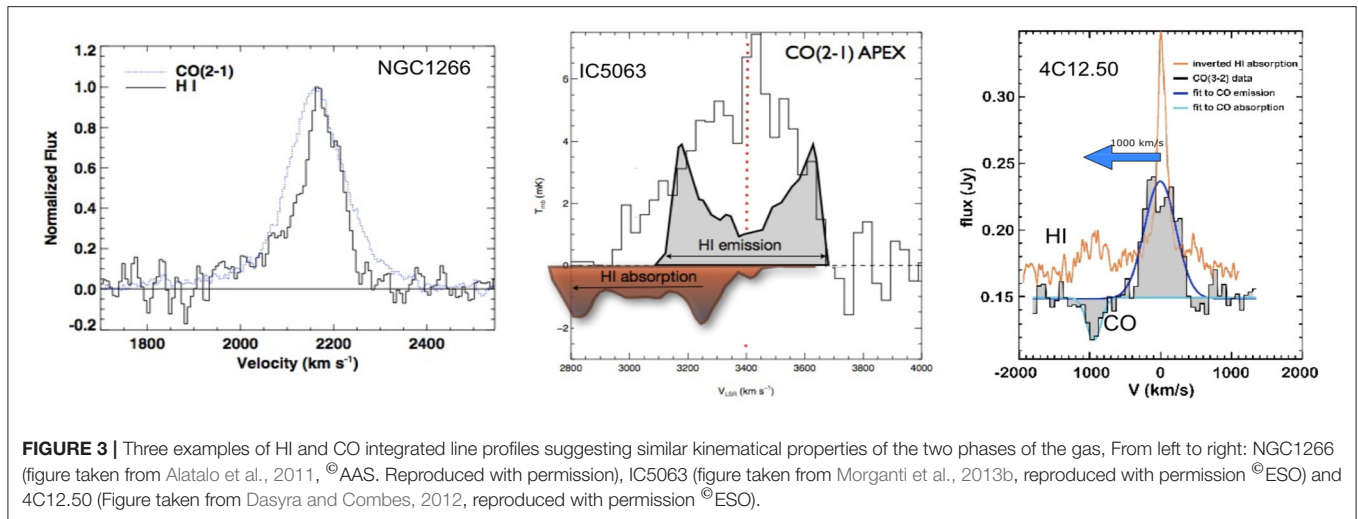
Finally, although outflows are common, it is worth notice that detailed work both with long slit and, more recently, with integral field units (IFU) shows that a complex interplay exists between outflows and infalling gas (e.g., Riffel et al., 2015), complicating in many objects the interpretation of the data.

## The Surprising Presence of Massive Outflows of Cold Gas (HI and Molecular)

The new “entry” in the study of AGN-driven outflows has been the discovery that a cold component of gas, i.e., in the neutral atomic (HI) and molecular (CO, OH) phases, can be associated even with fast outflows (with velocities  $\geq 1,000 \text{ km/s}$ ). This discovery has challenged our ideas on how the energy released by an AGN affects its surroundings. This component is particularly interesting for two main reasons: its uncertain origin (see section Driving Mechanisms and Energetics of the Outflows)—perhaps the result of a very efficient cooling of the gas—and its impact. Surprisingly, this component (and in particular the cold molecular component) has been found to represent the most massive component of the outflow.

An extensive literature is available on the properties of these outflows: for the atomic gas by e.g., Morganti et al., 2005, 2013a, 2016; Lehnert et al., 2011; Rupke and Veilleux, 2011, 2013; for the warm and cold molecular gas by e.g., Feruglio et al., 2010; Alatalo et al., 2011; Dasyra and Combes, 2011, 2012; Guillard et al., 2012; Ciccone et al., 2014; García-Burillo et al., 2014; Tadhunter et al., 2014; Morganti et al., 2015a; and for OH by e.g., Fischer, 2010; Sturm et al., 2011; Veilleux et al., 2013.

**Figure 3** shows the intriguing similarities between the CO and HI profiles for three objects suggesting similar kinematics for



these components. It is not yet clear how far this synergy extends, given the limited number of objects with HI and CO observations available.

Using data from literature, Cicone et al. (2014) and Fiore et al. (2017) have shown correlations between the AGN-driven molecular and ionized-wind mass outflow rates and the AGN bolometric luminosity. The mass outflow rates of the molecular gas are systematically the highest, except for the most luminous AGN where the two rates appear to converge (Fiore et al., 2017). A correlation is also found between the momentum carried in the outflow ( $v\dot{M}/c$ , where  $v$  is the outflow velocity) with the photon momentum output of the AGN,  $L_{\text{AGN}}/c$  but with a “momentum boosting” of about a factor 20, suggesting an energy-driven nature of the outflows (see e.g., Cicone et al., 2014).

Fast HI outflows are observed using HI absorption. The planned upcoming surveys (Morganti et al., 2015b) make this method quite powerful for investigating the presence of these outflows in large samples. A proof-of-concept survey is presented in Geréb et al. (2015) and Maccagni et al. (2017). Of the galaxies detected in HI, at least 15% show fast outflows (Geréb et al., 2015) with mass outflow rates between a few and  $\sim 30 M_{\odot} \text{ year}^{-1}$ . The radio jets drive at least some of these outflows. In particular, young radio sources are those where the plasma jet has the strongest impact on the surrounding medium and where most of the HI outflows are occurring (Geréb et al., 2015). A possible correlation has been observed between the amplitude (in velocity) of the outflow and the radio power (Maccagni et al., 2017). Finally, the presence of clumpy gas medium in the regions surrounding the radio sources may enhance the impact of the jet (as suggested by some simulations, see section Driving Mechanisms and Energetics of the Outflows). The presence of such a clumpy medium (embedded in a diffuse component) is confirmed by the results of deep, high-resolution (VLBI) observations tracing HI clouds with tens of pc sizes (with cloud masses up to  $\sim 10^4 M_{\odot}$ , Morganti et al., 2013a; Schulz et al., in preparation). Molecular clouds are also traced by high resolution ALMA observations (Maccagni et al., 2017).

## DRIVING MECHANISMS AND ENERGETICS OF THE OUTFLOWS

Different mechanisms have been proposed to drive the outflowing gas (see e.g., Veilleux et al., 2005; King and Pounds, 2015). Wide-angle winds can be launched from the accretion disk and driven by the coupling of the radiation to the ambient medium through radiation pressure on dust. It is also possible to have a hot thermal wind (e.g., Compton-heated) colliding with and accelerating the ISM. Parsec-scale jets can produce over-pressured cavities from which the wide-angled outflow can be launched. Alternatively, outflows can be driven by the mechanical action of the radio plasma emanating from the AGN (Wagner et al., 2012; Mukherjee et al., 2016).

For powerful AGN, the scenario that has been suggested to better match the observations—in particular the presence of cold, molecular gas—is the one where winds launched from the accretion disk interact and shock the surrounding medium. This interaction can create an (energy-conserving) adiabatically expanding hot bubble. The adiabatically expanding wind sweeps up gas and drives an outer shock into the host ISM (Faucher-Giguère and Quataert, 2012; Zubovas and King, 2012, 2014). The outflowing gas is able to cool radiatively into clumps of cold molecular material. This would explain the presence of fast outflows ( $\sim 1,300 \text{ km s}^{-1}$ ) of neutral-atomic (HI, NaI D) and molecular gas (Costa et al., 2017; Richings and Faucher-Giguère, 2017). An alternative scenario to explain the fast outflows of molecular gas assumes that pre-existing molecular clouds from the host ISM are entrained in the adiabatically expanding shocked wind and they can be accelerated to the observed velocities without being destroyed (see e.g., Scannapieco, 2017).

The role of radio jets is also relevant. In this case, the structure of the medium is playing an important role in defining the impact that the radio plasma jets can have (e.g., Wagner et al., 2012). Following the results of recent simulations, a jet entering a clumpy medium can have a larger impact than previously proposed. Numerical simulations of a newly created radio jet

entering a two-phase clumpy medium (dense molecular clouds, i.e., a few  $100 \text{ cm}^{-3}$ , embedded in a lower-density medium) show that the jet expands following a path of less resistance but still colliding with the gas clouds. This originates a cocoon of disturbed and outflowing gas around the jet, affecting a *large* region of the galaxy (see simulations by Wagner et al., 2012 and Mukherjee et al., 2016).

The requirements from the simulations in order to explain the observations are such that the kinetic power in the wind has to be a substantial fraction of the available accretion power ( $\dot{E}/L_{\text{edd}} \sim 0.05\text{--}0.1$ , Di Matteo et al., 2005). Although uncertainties still affect some key parameters of the outflows (like e.g., mass, mass outflow rate etc.), the results so far suggest that these requirements are not always met. Alternatively, the coupling between the energy released and the surrounding medium has to be particularly efficient, i.e., as a consequence of the conditions of the medium. For example, and as mentioned above for the case of radio jets, an important factor for the coupling of photons or plasma with the multiphase galactic gas is the presence of a clumpy medium with dense clouds (Wagner et al., 2012; Bieri et al., 2017). This is important both for radiation-driven as for the jet-driven outflows (Wagner et al., 2012, 2013). Furthermore, a “two stage” model has been proposed by Hopkins and Elvis (2010) in which the outflow passing over a cold cloud, will be able to affect the cloud material and expand it in the direction perpendicular to the outflow direction. This shredding/expansion will amplify the effect of the interaction and substantially reduce (i.e., up to an order of magnitude) the required energy budget for feedback to affect a host galaxy.

Finally, connecting outflows observed on different scales, i.e., connecting the inner wind with large-scale molecular outflows, is important for obtaining a global view of outflows. This has been possible so far only for a limited number of objects. These cases suggest that most of the nuclear wind kinetic energy produced on the pc scale is transferred to mechanical energy on the kpc scale outflow. At least in some cases, the outflow is undergoing an energy conserving expansion (Cicone et al., 2014; Tombesi et al., 2015; Stern et al., 2016) although more detailed data are needed to confirm this scenario (see e.g., Veilleux et al., 2017).

## THE VARIETY OF OUTFLOWS THROUGH TWO CASE STUDIES

Despite these exciting results, the number of objects where extensive multi-wavelengths data are available to characterize the different phases of the outflow is still limited. This is mainly because of the time and effort needed to collect data from a variety of (often highly oversubscribed) telescopes. Expanding this limited statistics and connecting the different scales and phases of the outflowing gas is the goal of many on-going projects. Below, I summarize the results for two of the best-studied objects. They represent cases where, thanks to detailed observations, two different mechanisms for driving the outflows have been suggested.

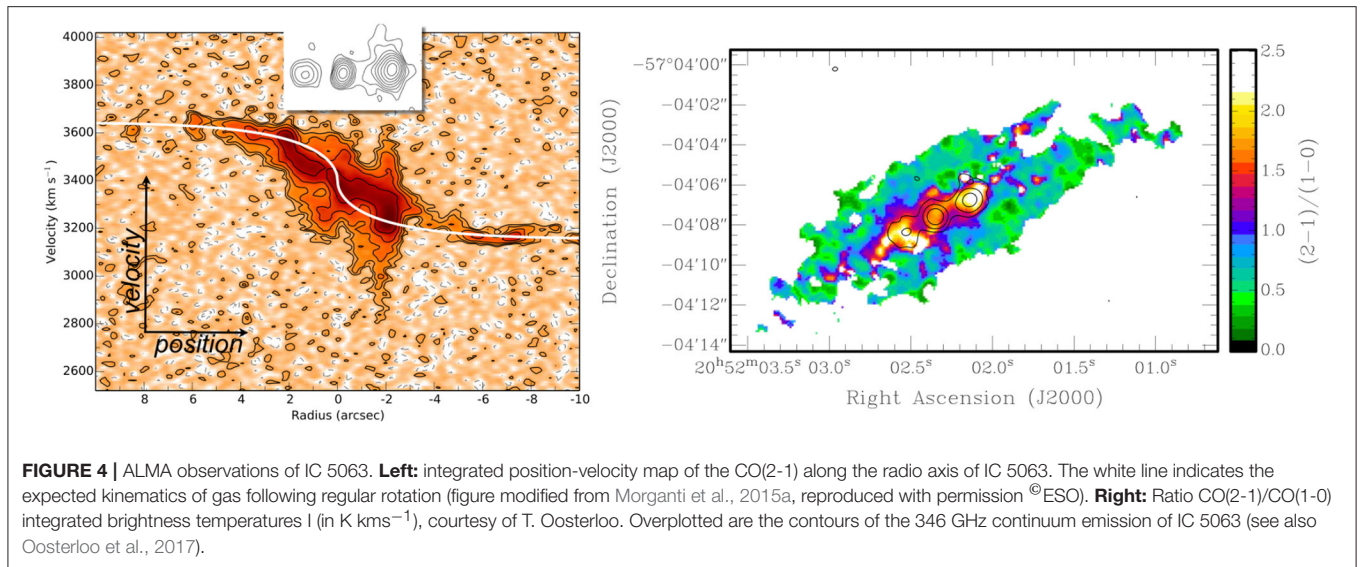
### The Wind-Driven Outflow in Mrk 231

Mrk 231 represents one of the best examples of wind-driven outflow and the first case where fast outflowing molecular gas was observed (Feruglio et al., 2010; Fischer, 2010). Being the nearest quasar, it allows a detailed exploration of the physical conditions of the gas in the outflow. A nuclear UFO has been observed in X-ray with velocity  $20,000 \text{ km s}^{-1}$  and mass outflow rate in the range  $0.3\text{--}1.6 M_{\odot} \text{ year}^{-1}$  (Feruglio et al., 2015). On the sub-kpc scale, an HI outflow of  $\sim 1,300 \text{ km s}^{-1}$  has been detected (Morganti et al., 2016) while the molecular outflow extend to kpc scale with a mass outflow rate in the range  $500\text{--}1,000 M_{\odot} \text{ year}^{-1}$  and associated kinetic energy of  $E_{\text{kin,mol}} = [7\text{--}10] - 10^{43} \text{ erg s}^{-1}$  (Feruglio et al. 2015). The NaI outflow is the most extended, reaching 3 kpc and mass outflow rate of  $179 M_{\odot} \text{ year}^{-1}$  (Rupke and Veilleux, 2011, 2013). This complex outflow is explained as driven by a wide angle, wind (see Figure 17 in Feruglio et al., 2015). Although Mrk 231 contains a radio plasma jet and radio lobes, the deep and detailed observations available show that the jet power does not seem large enough to drive and sustain the outflow. Mrk 231 is one of the few objects where the parameters of the outflow on different scales have been connected. Interestingly  $E_{\text{kin,UFO}} \sim E_{\text{kin,mol}}$  as expected for outflows undergoing an energy conserving expansion. Thus, this confirms that most of the UFO kinetic energy is transferred to mechanical energy of the kpc-scale outflow (Feruglio et al., 2015).

### The Jet-Driven Outflow in the Seyfert 2 IC 5063

IC 5063 represents one of the most radio-loud Seyfert galaxies (albeit still a relatively weak radio AGN in a general sense;  $P_{1.4\text{GHz}} = 3 \times 10^{23} \text{ W Hz}^{-1}$ ) and it was the first object where a fast AGN-driven HI outflow was discovered (Morganti et al., 1998; Oosterloo et al., 2000). The outflow is multi-phase (including HI, ionized, warm and cold molecular gas, see Morganti et al., 2015a for a summary). Although the radio power is actually lower than the one of Mrk 231, the location of the outflow suggests that in IC5063 the radio jet is the dominant driving mechanism of the outflow (Tadhunter et al., 2014; Morganti et al., 2015a). ALMA observations of the molecular gas show that disturbed kinematics of the gas occur across the entire extension of the radio source ( $\sim 1 \text{ kpc}$ , see Figure 4, left). Furthermore, not only the kinematics is affected by the jet but also the excitation of the gas, with the outflowing gas having high excitation (with  $T_{\text{ex}} 30\text{--}50 \text{ K}$ ) and optically thin conditions compared to the gas in the quiescent disk (Oosterloo et al., 2017; see Figure 4, right; Dasyra et al., 2016). The mass of the cold molecular outflow  $\sim 1.2 \times 10^6 M_{\odot}$  is much higher than the one associated to warm  $\text{H}_2$  and to ionized gas. This suggests that most of the cold molecular outflow is due to fast cooling after the passage of a shock. The mass outflow rate of the cold molecular gas is  $\sim 4 M_{\odot} \text{ year}^{-1}$  (while for the ionized gas is  $\sim 0.08 M_{\odot} \text{ year}^{-1}$ ). In this object, the kinetic power of the outflow appears to be a relative high fraction of the nuclear bolometric luminosity. However, the global impact is modest and only a small fraction of the outflowing gas may leave the galaxy. The main effect of the outflow is to increase the turbulence of the medium and redistribute the gas (see e.g., Guillard et al., 2012, 2015).





## SUMMARY AND CONCLUSIONS

As described in this review, there are a variety of ways in which the energy released by the AGN affects the surrounding medium.

On large scales, radio plasma lobes excavate cavities in the hot gas depositing enough energy to prevent this large reservoir of gas from cooling. The X-ray cavities are detected in  $\sim 50\%$  of galaxy clusters, groups, and individual galaxies. Some of the gas manages to cool and can be followed to trace its interaction with the radio plasma. New exciting possibilities to explore this phenomenon are open up by ALMA. The velocities of the cold molecular gas observed so far are not high enough for the gas to escape. The gas would fall back, further supporting the (short) duty cycle of activity observed especially for radio sources in cool-core clusters (Hogan et al., 2015).

Closer to the nucleus, outflows are found in a large fraction of AGN while, at the same time, infall is also required to maintain the AGN active (Kurosawa et al., 2009): a complex interplay—still to be fully disentangled—is occurring in these central regions. The gas participating to the outflows is multi-phase and includes also a cold (HI and cold molecular) component. Thus, different tracers can be used to study the physical properties of the outflows and the driving mechanisms. Surprisingly, the component of cold molecular gas is often the most massive and, therefore, represents an important component for feedback. The mechanism(s) that can produce fast outflows of cold (molecular) gas are still uncertain. This gas could be the result of fast cooling after the passage of a shock: the cold molecular gas would be the end product of the cooling. However, alternative scenarios have been suggested and need to be verified with more data. The kinetic energy of the outflows is not always matching the requirements from numerical simulations but more sophisticated models of the coupling between the energy and the medium is needed to fully assess the impact. The effect of radio jets can be

important, also for low power radio sources. Interestingly, the initial phase of a radio jet (i.e., in young or restarted radio source) appears to have the largest impact on the surrounding gas. Also in the case of the outflows, the gas does not always escape the galaxy: the main effect of the AGN appears to be to inject turbulence and relocate the gas.

This review has focused on AGN at low redshift. However, the results presented here can provide an important reference point for the studies at high- $z$  where the effects of AGN feedback are expected to be larger. Interesting results for high redshift objects are now starting to appear (e.g., Carniani et al., 2017). Finally, this review has focused on *negative* feedback but *positive* feedback is also expected to occur (see e.g., Maiolino et al., 2017). At low redshift this effect, albeit observed, seems to be limited (Santoro et al., 2016 and ref. therein, see also Combes, 2017, these Proceedings) but more dedicated observations are needed to quantify its importance.

In summary, the field is expanding extremely rapidly and, thanks to the many upcoming new observing facilities, our view of AGN will become increasingly detailed. An even tighter collaboration between observers and theorists will be necessary to interpret this wealth of data for understanding the complex phenomenon of AGN feedback.

## ACKNOWLEDGMENTS

RM would like to thank the organizers for the interesting and pleasant conference and for giving the chance to the participants to visit unique places in Padova, taking advantage of the 250th anniversary of the Astronomical Observatory (la Specola). RM gratefully acknowledges support from the European Research Council under the European Union's Seventh Framework Programme (FP/2007–2013)/ERC Advanced Grant RADIOLIFE-320745.



## REFERENCES

- Alatalo, K., Blitz, L., Young, L. M., Davis, T. A., Bureau, M., Lopez, L. A., et al. (2011). Discovery of an active galactic nucleus driven molecular outflow in the local early-type galaxy NGC 1266. *Astrophys. J.* 735, 88–100. doi: 10.1088/0004-637X/735/2/88
- Alexander, D. M., and Hickox, R. C. (2012). What drives the growth of black holes? *New Astron. Rev.* 56, 93–121. doi: 10.1016/j.newar.2011.11.003
- Bieri, R., Dubois, Y., Rosdahl, J., Wagner, A., Silk, J., and Mamon, G. A. (2017). Outflows driven by quasars in high-redshift galaxies with radiation hydrodynamics. *Mon. Not. R. Astron. Soc.* 464, 1854–1873. doi: 10.1093/mnras/stw2380
- Bland-Hawthorn, J., Veilleux, S., and Cecil, G. (2007). Galactic winds: a short review. *Astrophys. Space Sci.* 311, 87–98. doi: 10.1007/s10509-007-9567-8
- Carniani, S., Marconi, A., Maiolino, R., Feruglio, C., Brusa, M., Cresci, G., et al. (2017). AGN feedback on molecular gas reservoirs in quasars at  $z \approx 2.4$ . *Astron. Astrophys.* 605, 105–119. doi: 10.1051/0004-6361/201730672
- Cattaneo, A., Faber, S. M., Binney, J., Dekel, A., Kormendy, J., Mushotzky, R., et al. (2009). The role of black holes in galaxy formation and evolution. *Nature* 460, 213–219. doi: 10.1038/nature08135
- Cavagnolo, K. W., McNamara, B. R., Nulsen, P. E. J., Carilli, C. L., Jones, C., and Birzan, L. (2010). A relationship between AGN jet power and radio power. *Astrophys. J.* 720, 1066–1072. doi: 10.1088/0004-637X/720/2/1066
- Cicone, C., Maiolino, R., Sturm, E., Graciá-Carpio, J., Feruglio, C., Neri, R., et al. (2014). Massive molecular outflows and evidence for AGN feedback from CO observations. *Astron. Astrophys.* 562, 21–46. doi: 10.1051/0004-6361/201322464
- Ciotti, L., Pellegrini, S., Negri, A., and Ostriker, J. P. (2017). The effect of the AGN feedback on the interstellar medium of early-type galaxies: 2D hydrodynamical simulations of the low-rotation case. *Astrophys. J.* 835, 15–37. doi: 10.3847/1538-4357/835/1/15
- Combes, F. (2017). AGN feedback and its quenching efficiency. *Front. Astron. Space Sci.* 4:10. doi: 10.3389/fspas.2017.00010
- Costa, T., Rosdahl, J., Sijacki, D., and Haehnelt, M. G. (2017). Quenching star formation with quasar outflows launched by trapped IR radiation. *ArXiv e-prints* arXiv:1709.08638.
- Costantini, E. (2010). The ultraviolet-X-ray connection in AGN outflows. *Space Sci. Rev.* 157, 265–277. doi: 10.1007/s11214-010-9706-3
- Crenshaw, D. M., and Kraemer, S. B. (2012). Feedback from mass outflows in nearby active galactic nuclei. I. Ultraviolet and X-ray absorbers. *Astrophys. J.* 753, 75–86. doi: 10.1088/0004-637X/753/1/75
- Crenshaw, D. M., and Kraemer, S. B. (2007). “Mass outflows from seyfert galaxies as seen in emission and absorption,” in *The Central Engine of Active Galactic Nuclei*, ASP Conference Series, Vol. 373, eds L. C. Ho and J.-M. Wang (Xi’an), 319–328.
- Crenshaw, D. M., Fischer, T. C., Kraemer, S. B., Schmitt, H. R., and Turner, T. J. (2012). “Measuring feedback in nearby AGN,” in *AGN Winds in Charleston*, Astronomical Society of the Pacific Conference Series, Vol. 460 (San Francisco, CA: Astronomical Society of the Pacific), 261–265.
- Crenshaw, D. M., Kraemer, S. B., and George, I. M. (2003). Mass loss from the nuclei of active galaxies. *Annu. Rev. Astron. Astrophys.* 41, 117–167. doi: 10.1146/annurev.astro.41.082801.100328
- Dasyra, K. M., and Combes, F. (2011). Turbulent and fast motions of H<sub>2</sub> gas in active galactic nuclei. *Astron. Astrophys.* 533, L10–L14. doi: 10.1051/0004-6361/201117730
- Dasyra, K. M., and Combes, F. (2012). Cold and warm molecular gas in the outflow of 4C 12.50. *Astron. Astrophys.* 541, L7–L11. doi: 10.1051/0004-6361/201219229
- Dasyra, K. M., Combes, F., Oosterloo, T., Oonk, J. B. R., Morganti, R., Salomé, P., et al. (2016). ALMA reveals optically thin, highly excited CO gas in the jet-driven winds of the galaxy IC 5063. *Astron. Astrophys.* 595, L7–L11. doi: 10.1051/0004-6361/201629689
- Di Matteo, T., Springel, V., and Hernquist, L. (2005). Energy input from quasars regulates the growth and activity of black holes and their host galaxies. *Nature* 433, 604–607. doi: 10.1038/nature03335
- Edge, A. C. (2001). The detection of molecular gas in the central galaxies of cooling flow clusters. *Mon. Not. R. Astron. Soc.* 328, 762–782. doi: 10.1046/j.1365-8711.2001.04802.x
- Elvis, M. (2000). A structure for quasars. *Astrophys. J.* 545, 63–76. doi: 10.1086/317778
- Fabian, A. C. (2012). Observational evidence of active galactic nuclei feedback. *Annu. Rev. Astron. Astrophys.* 50, 455–489. doi: 10.1146/annurev-astro-081811-125521
- Faucher-Giguère, C.-A., and Quataert, E. (2012). The physics of galactic winds driven by active galactic nuclei. *Mon. Not. R. Astron. Soc.* 425, 605–622. doi: 10.1111/j.1365-2966.2012.21512.x
- Feruglio, C., Maiolino, R., Piconcelli, E., Menci, N., Aussel, H., Lamastra, A., et al. (2010). Quasar feedback revealed by giant molecular outflows. *Astron. Astrophys.* 518, L155–L159. doi: 10.1051/0004-6361/201015164
- Feruglio, C., Fiore, F., Carniani, S., Piconcelli, E., Zappacosta, L., Bongiorno, A., et al. (2015). The multi-phase winds of Markarian 231: from the hot, nuclear, ultra-fast wind to the galaxy-scale, molecular outflow. *Astron. Astrophys.* 583, 99–115. doi: 10.1051/0004-6361/201526020
- Fiore, F., Feruglio, C., Shankar, F., Bischetti, M., Bongiorno, A., Brusa, M., et al. (2017). AGN wind scaling relations and the co-evolution of black holes and galaxies. *Astron. Astrophys.* 601, 143–164. doi: 10.1051/0004-6361/201629478
- Fischer, J., Sturm, E., González-Alfonso, E., Graciá-Carpio, J., Hailey-Dunsheath, S., and Poglitsch, A. (2010). Herschel-PACS spectroscopic diagnostics of local ULIRGs: conditions and kinematics in Markarian 231. *Astron. Astrophys.* 518, L41–45. doi: 10.1051/0004-6361/201014676
- García-Burillo, S., Combes, F., Usero, A., Aalto, S., Krips, M., Viti, S., et al. (2014). Molecular line emission in NGC 1068 imaged with ALMA. I. An AGN-driven outflow in the dense molecular gas. *Astron. Astrophys.* 567, 125–149. doi: 10.1051/0004-6361/201423843
- Gebhardt, K., Bender, R., Bower, G., Dressler, A., Faber, S. M., Filippenko, A. V., et al. (2000). A relationship between nuclear black hole mass and galaxy velocity dispersion. *Astrophys. J.* 539, L13–L16. doi: 10.1086/312840
- Geréb, K., Maccagni, F. M., Morganti, R., and Oosterloo, T. A. (2015). The HI absorption “Zoo”. *Astron. Astrophys.* 575, 44–61. doi: 10.1051/0004-6361/201424655
- Guillard, P., Boulanger, F., Lehnert, M. D., Pineau des Forêts, G., Combes, F., Falgarone, E., et al. (2015). Exceptional AGN-driven turbulence inhibits star formation in the 3C 326N radio galaxy. *Astron. Astrophys.* 574, 32–47. doi: 10.1051/0004-6361/201423612
- Guillard, P., Ogle, P. M., Emonts, B. H. C., Appleton, P. N., Morganti, R., Tadhunter, C., et al. (2012). Strong molecular hydrogen emission and kinematics of the multiphase gas in radio galaxies with fast jet-driven outflows. *Astrophys. J.* 747, 95–120. doi: 10.1088/0004-637X/747/2/95
- Harrison, C. M. (2017). Impact of supermassive black hole growth on star formation. *Nature Astron.* 1:0165. doi: 10.1038/s41550-017-0165
- Hogan, M. T., Edge, A. C., Geach, J. E., Grainge, K. J. B., Hlavacek-Larrondo, J., Hovatta, T., et al. (2015). High radio-frequency properties and variability of brightest cluster galaxies. *Mon. Not. R. Astron. Soc.* 453, 1223–1240. doi: 10.1093/mnras/stv1518
- Holt, J., Tadhunter, C. N., and Morganti, R. (2008). Fast outflows in compact radio sources: evidence for AGN-induced feedback in the early stages of radio source evolution. *Mon. Not. R. Astron. Soc.* 387, 639–659. doi: 10.1111/j.1365-2966.2008.13089.x
- Holt, J., Tadhunter, C. N., Morganti, R., and Emonts, B. H. C. (2011). The impact of the warm outflow in the young (GPS) radio source and ULIRG PKS 1345+12 (4C 12.50). *Mon. Not. R. Astron. Soc.* 410, 1527–1536. doi: 10.1111/j.1365-2966.2010.17535.x
- Hopkins, P. F., and Elvis, M. (2010). Quasar feedback: more bang for your buck. *Mon. Not. R. Astron. Soc.* 401, 7–14. doi: 10.1111/j.1365-2966.2009.15643.x
- Husemann, B., Wisotzki, L., Sánchez, S. F., and Jahnke, K. (2013). The properties of the extended warm ionised gas around low-redshift QSOs and the lack of extended high-velocity outflows. *Astron. Astrophys.* 549, 43–76. doi: 10.1051/0004-6361/201220076
- Kauffmann, G., and Haehnelt, M. (2000). A unified model for the evolution of galaxies and quasars. *Mon. Not. R. Astron. Soc.* 311, 576–588. doi: 10.1046/j.1365-8711.2000.03077.x
- King, A., and Pounds, K. (2015). Powerful outflows and feedback from active galactic nuclei. *Annu. Rev. Astron. Astrophys.* 53, 115–154. doi: 10.1146/annurev-astro-082214-122316
- King, A. R., and Pounds, K. A. (2003). Black hole winds. *Mon. Not. R. Astron. Soc.* 345, 657–659. doi: 10.1046/j.1365-8711.2003.06980.x

- Kurosawa, R., Proga, D., and Nagamine, K. (2009). On the feedback efficiency of active galactic nuclei. *Astrophys. J.* 707:823. doi: 10.1088/0004-637X/707/1/823
- Lehnert, M. D., Tasse, C., Nesvadba, N. P. H., Best, P. N., and van Driel, W. (2011). The Na D profiles of nearby low-power radio sources: jets powering outflows. *Astron. Astrophys.* 532, L3–L8. doi: 10.1051/0004-6361/201117323
- Maccagni, F.M., Morganti, R., Oosterloo, T.A., Geréb, K., and Maddox, N. (2017). Kinematics and physical conditions of HI in nearby radio sources. The last survey of the old westerbork synthesis radio Telescope. *Astron. Astrophys.* 604, 43–65. doi: 10.1051/0004-6361/201730563
- Maiolino, R., Russell, H. R., Fabian, A. C., Carniani, S., Gallagher, R., Cazzoli, S., et al. (2017). Star formation inside a galactic outflow. *Nature* 544, 202–206. doi: 10.1038/nature21677
- McNamara, B. R., and Nulsen, P. E. J. (2007). Heating hot atmospheres with active galactic nuclei. *Annu. Rev. Astron. Astrophys.* 45, 117–175. doi: 10.1146/annurev.astro.45.051806.110625
- McNamara, B. R., and Nulsen, P. E. J. (2012). Mechanical feedback from active galactic nuclei in galaxies, groups and clusters. *New J. Phys.* 14:055023. doi: 10.1088/1367-2630/14/5/055023
- McNamara, B. R., Russell, H. R., Nulsen, P. E. J., Edge, A. C., Murray, N. W., Main, R. A., et al. (2014). A 1010 solar mass flow of molecular gas in the A1835 brightest cluster galaxy. *Astrophys. J.* 785:44. doi: 10.1088/0004-637X/785/1/44
- Morganti, R. (2017). Archaeology of active galaxies across the electromagnetic spectrum. *Nat. Astron.* 1, 596–605. doi: 10.1038/s41550-017-0223-0
- Morganti, R., Fogasy, J., Paragi, Z., Oosterloo, T., and Orienti, M. (2013a). Radio jets clearing the way through a galaxy: watching feedback in action. *Science* 341, 1082–1085. doi: 10.1126/science.1240436
- Morganti, R., Frieswijk, W., Oonk, J. B., Oosterloo, T., and Tadhunter, C. (2013b). Tracing the extreme interplay between radio jets and the ISM in IC 5063. *Astron. Astrophys.* 552, L4–L9. doi: 10.1051/0004-6361/201220734
- Morganti, R., Oosterloo, T., and Tsvetanov, Z. (1998). A radio study of the seyfert galaxy ic 5063: evidence for fast gas outflow. *Astron. J.* 115, 915–927. doi: 10.1086/300236
- Morganti, R., Oosterloo, T., Oonk, J. B. R., Frieswijk, W., and Tadhunter, C. (2015a). The fast molecular outflow in the Seyfert galaxy IC 5063 as seen by ALMA. *Astron. Astrophys.* 580, 1–12. doi: 10.1051/0004-6361/201525860
- Morganti, R., Sadler, E. M., and Curran, S. (2015b). *Cool Outflows and HI Absorbers with SKA. Advancing Astrophysics with the Square Kilometre Array (AASKA14) 134*. Available online at: <http://pos.sissa.it/cgi-bin/reader/conf.cgi?confid=215,id.134>
- Morganti, R., Tadhunter, C. N., and Oosterloo, T. A. (2005). Fast neutral outflows in powerful radio galaxies: a major source of feedback in massive galaxies. *Astron. Astrophys.* 444, L9–L13. doi: 10.1051/0004-6361:200500197
- Morganti, R., Veilleux, S., Oosterloo, T., Teng, S. H., and Rupke, D. (2016). Another piece of the puzzle: the fast H I outflow in Mrk 231. *Astron. Astrophys.* 593, 30–41. doi: 10.1051/0004-6361/201628978
- Mukherjee, D., Bicknell, G.V., Sutherland, R., and Wagner, A. (2016). Relativistic jet feedback in high-redshift galaxies - I. Dynamics. *Mon. Not. R. Astron. Soc.* 461, 967–983. doi: 10.1093/mnras/stw1368
- Mullaney, J. R., Alexander, D. M., Fine, S., Goulding, A. D., Harrison, C. M., and Hickox, R. C. (2013). Narrow-line region gas kinematics of 24 264 optically selected AGN: the radio connection. *Mon. Not. R. Astron. Soc.* 433, 622–638. doi: 10.1093/mnras/stt751
- Nesvadba, N. P. H., Lehnert, M. D., De Breuck, C., and Gilbert, A. M., van Breugel, W. (2008). Evidence for powerful AGN winds at high redshift: dynamics of galactic outflows in radio galaxies during the “Quasar Era”. *Astron. Astrophys.* 491, 407–424. doi: 10.1051/0004-6361:200810346
- Nulsen, P., Jones, C., Forman, W., Churazov, E., McNamara, B., David, L., et al. (2009). “Radio mode outbursts in giant elliptical galaxies,” in *American Institute of Physics Conference Series*, Vol. 1201, 198–201. doi: 10.1063/1.3293033
- Nulsen, P. E. J., Jones, C., Forman, W. R., David, L. P., McNamara, B. R., Rafferty, D. A., et al. (2007). “AGN heating through cavities and shocks,” in *Heating versus Cooling in Galaxies and Clusters of Galaxies*, eds P. Schuecker, H. Böhringer, A. Finoguenov, and G. W. Pratt (Berlin; Heidelberg: Springer-Verlag), 210–215.
- Oosterloo, T., Oonk, J. B. R., Morganti, R., Combes, F., Dasyra, K., Salomé, P., et al. (2017). Properties of the molecular gas in the fast outflow in the Seyfert Galaxy IC. 5063. arXiv:1710.01570.
- Oosterloo, T. A., Morganti, R., Tzioumis, A., Reynolds, J., King, E., McCulloch, P., et al. (2000). A strong jet-cloud interaction in the seyfert galaxy IC 5063: VLBI observations. *Astron. J.* 119, 2085–2091. doi: 10.1086/301358
- Pounds, K. A., Reeves, J. N., King, A. R., Page, K. L., O'Brien, P. T., and Turner, M. J. L. (2003). A high-velocity ionized outflow and XUV photosphere in the narrow emission line quasar PG1211+143. *Mon. Not. R. Astron. Soc.* 345, 705–713. doi: 10.1046/j.1365-8711.2003.07006.x
- Proga, D., and Kallman, T. R. (2004). Dynamics of line-driven disk winds in active galactic nuclei. II. Effects of disk radiation. *Astrophys. J.* 616, 688–695. doi: 10.1086/425117
- Reeves, J. N., O'Brien, P. T., Braito, V., Behar, E., Miller, L., Turner, T. J., et al. (2009). A compton-thick wind in the High-luminosity Quasar, PDS 456. *Astrophys. J.* 701, 493–507. doi: 10.1088/0004-637X/701/1/493
- Richings, A. J., and Faucher-Giguere, C.-A. (2017). Radiative cooling of swept up gas in AGN-driven galactic winds and its implications for molecular outflows. *ArXiv e-prints* arXiv:1710.09433.
- Riffel, R. A., Storch-Bergmann, T., and Riffel, R. (2015). Feeding versus feedback in active galactic nuclei from near-infrared integral field spectroscopy - X. NGC 5929. *Mon. Not. R. Astron. Soc.* 451, 3587–3605. doi: 10.1093/mnras/stv1129
- Rupke, D. S. N., and Veilleux, S. (2011). Integral field spectroscopy of massive, kiloparsec-scale outflows in the Infrared-luminous QSO Mrk 231. *Astrophys. J.* 729, L27. doi: 10.1088/2041-8205/729/2/L27
- Rupke, D. S. N., and Veilleux, S. (2013). The multiphase structure and power sources of galactic winds in major mergers. *Astrophys. J.* 768:75. doi: 10.1088/0004-637X/768/1/75
- Russell, H. R., McDonald, M., McNamara, B. R., Fabian, A. C., Nulsen, P. E. J., Bayliss, M. B., et al. (2017). Alma observations of massive molecular gas filaments encasing radio bubbles in the phoenix cluster. *Astrophys. J.* 836:130. doi: 10.3847/1538-4357/836/1/130
- Russell, H. R., McNamara, B. R., Edge, A. C., Nulsen, P. E. J., Main, R. A., Vantyghem, A. N., et al. (2014). Massive molecular gas flows in the A1664 brightest cluster galaxy. *Astrophys. J.* 784:78. doi: 10.1088/0004-637X/784/1/78
- Salomé, P., and Combes, F. (2003). Cold molecular gas in cooling flow clusters of galaxies. *Astron. Astrophys.* 412, 657–667. doi: 10.1051/0004-6361:20031438
- Santoro, F., Oonk, J. B. R., Morganti, R., Oosterloo, T. A., and Tadhunter, C. (2016). Embedded star formation in the extended narrow line region of Centaurus A: extreme mixing observed by MUSE. *Astron. Astrophys.* 590, 37–44. doi: 10.1051/0004-6361/201628353
- Scannapieco, E. (2017). The production of cold gas within galaxy outflows. *Astrophys. J.* 837, 28–45. doi: 10.3847/1538-4357/aa5d0d
- Schaye, J., Crain, R. A., Bower, R. G., Furlong, M., Schaller, M., Theuns, T., et al. (2015). The EAGLE project: simulating the evolution and assembly of galaxies and their environments. *Mon. Not. R. Astron. Soc.* 446, 521–554. doi: 10.1093/mnras/stu2058
- Sijacki, D., Vogelsberger, M., Genel, S., Springel, V., Torrey, P., Snyder, G. F., et al. (2015). The Illustris simulation: the evolving population of black holes across cosmic time. *Mon. Not. R. Astron. Soc.* 452, 575–596. doi: 10.1093/mnras/stv1340
- Silk, J., and Rees, M. J. (1998). Quasars and galaxy formation. *Astron. Astrophys.* 331, L1–L4.
- Stern, J., Faucher-Giguère, C.-A., Zakamska, N. L., and Hennawi, J. F. (2016). Constraining the dynamical importance of hot gas and radiation pressure in quasar outflows using emission line ratios. *Astrophys. J.* 819, 130–150. doi: 10.3847/0004-637X/819/2/130
- Sturm, E., González-Alfonso, E., Veilleux, S., Fischer, J., Graciá-Carpio, J., Hailey-Dunsheath, S., et al. (2011). Massive molecular outflows and negative feedback in ULIRGs observed by Herschel-PACS. *Astrophys. J.* 733, L16–L21. doi: 10.1088/2041-8205/733/1/L16
- Sun, A.-L., Greene, J. E., and Zakamska, N. L. (2017). Sizes and kinematics of extended narrow-line regions in luminous obscured AGN selected by broadband images. *Astrophys. J.* 835, 222–248. doi: 10.3847/1538-4357/835/2/222
- Tadhunter, C. (2008). The importance of sub-relativistic outflows in AGN host galaxies. *Mem. della Soc. Astron. Italiana* 79:1205.
- Tadhunter, C., Morganti, R., Rose, M., Oonk, J. B., and Oosterloo, T. (2014). Jet acceleration of the fast molecular outflows in the Seyfert galaxy IC 5063. *Nature* 511, 440–443. doi: 10.1038/nature13520

- Tombesi, F., Cappi, M., Reeves, J. N., and Braito, V. (2012). Evidence for ultrafast outflows in radio-quiet AGNs - III. Location and energetics. *Mon. Not. R. Astron. Soc.* 422, L1–L5. doi: 10.1111/j.1745-3933.2012.01221.x
- Tombesi, F., Cappi, M., Reeves, J. N., Palumbo, G. G. C., Braito, V., and Dadina, M. (2011). Evidence for ultra-fast outflows in radio-quiet active galactic nuclei. II. detailed photoionization modeling of Fe K-shell absorption lines. *Astrophys. J.* 742:44. doi: 10.1088/0004-637X/742/1/44
- Tombesi, F., Meléndez, M., Veilleux, S., Reeves, J. N., González-Alfonso, E., and Reynolds, C. S. (2015). Wind from the black-hole accretion disk driving a molecular outflow in an active galaxy. *Nature* 519, 436–438. doi: 10.1038/nature14261
- Tremblay, G. R., Oonk, J. B., Combes, F., Salomé, P., O’Dea, C., Baum, S. A., et al. (2016). Cold, clumpy accretion onto an active supermassive black hole. *Nature* 534, 218–221. doi: 10.1038/nature17969
- Veilleux, S., Bolatto, A., Tombesi, F., Meléndez, M., Sturm, E., González-Alfonso, E., et al. (2017). Quasar feedback in the ultraluminous infrared galaxy F11119+3257: connecting the accretion disk wind with the large-scale molecular outflow. *Astrophys. J.* 843, 18–29. doi: 10.3847/1538-4357/aa767d
- Veilleux, S., Cecil, G., and Bland-Hawthorn, J. (2005). Galactic winds. *Annu. Rev. Astron. Astrophys.* 43, 769–826. doi: 10.1146/annurev.astro.43.072103.150610
- Veilleux, S., Meléndez, M., Sturm, E., Gracia-Carpio, J., Fischer, J., González-Alfonso, E., et al. (2013). Fast molecular outflows in luminous galaxy mergers: evidence for quasar feedback from Herschel. *Astrophys. J.* 776, 27–48. doi: 10.1088/0004-637X/776/1/27
- Wagner, A. Y., Bicknell, G. V., Umemura, M. (2012). Driving outflows with relativistic jets and the dependence of active galactic nucleus feedback efficiency on interstellar medium inhomogeneity. *Astrophys. J.* 757:136. doi: 10.1088/0004-637X/757/2/136
- Wagner, A. Y., Umemura, M., and Bicknell, G. V. (2013). Ultrafast outflows: galaxy-scale active galactic nucleus feedback. *Astrophys. J.* 763:L18. doi: 10.1088/2041-8205/763/1/L18
- Whittle, M. (1985). The narrow line region of active galaxies. I - nuclear forbidden line profiles. II - relations between forbidden line profile shape and other properties. *Mon. Not. R. Astron. Soc.* 213, 1–31. doi: 10.1093/mnras/213.1.1
- Zakamska, N. L., and Greene, J. E. (2014). Quasar feedback and the origin of radio emission in radio-quiet quasars. *Mon. Not. R. Astron. Soc.* 442, 784–804. doi: 10.1093/mnras/stu842
- Zubovas, K., and King, A. (2012). Clearing out a galaxy. *Astrophys. J.* 745:L34. doi: 10.1088/2041-8205/745/2/L34
- Zubovas, K., and King, A. R. (2014). Galaxy-wide outflows: cold gas and star formation at high speeds. *Mon. Not. R. Astron. Soc.* 439, 400–406. doi: 10.1093/mnras/stt2472

**Conflict of Interest Statement:** The author declares that the research was conducted in the absence of any commercial or financial relationships that could be construed as a potential conflict of interest.

Copyright © 2017 Morganti. This is an open-access article distributed under the terms of the Creative Commons Attribution License (CC BY). The use, distribution or reproduction in other forums is permitted, provided the original author(s) or licensor are credited and that the original publication in this journal is cited, in accordance with accepted academic practice. No use, distribution or reproduction is permitted which does not comply with these terms.