



University of Groningen

Screening for distant metastases in patients with ipsilateral breast tumor recurrence

Sentinel Node Recurrent Breast Can; Poodt, Ingrid G. M.; Schipper, Robert-Jan; de Greef, Bianca T. A.; Vugts, Guusje; Maaskant-Braat, Adriana J. G.; Jansen, Frits H.; Wyndaele, Dirk N. J.; Voogd, Adri C.; Nieuwenhuijzen, Grard A. P.

Published in:
Breast Cancer Research and Treatment

DOI:
[10.1007/s10549-019-05205-z](https://doi.org/10.1007/s10549-019-05205-z)

IMPORTANT NOTE: You are advised to consult the publisher's version (publisher's PDF) if you wish to cite from it. Please check the document version below.

Document Version
Publisher's PDF, also known as Version of record

Publication date:
2019

[Link to publication in University of Groningen/UMCG research database](#)

Citation for published version (APA):

Sentinel Node Recurrent Breast Can, Poodt, I. G. M., Schipper, R.-J., de Greef, B. T. A., Vugts, G., Maaskant-Braat, A. J. G., ... Nieuwenhuijzen, G. A. P. (2019). Screening for distant metastases in patients with ipsilateral breast tumor recurrence: the impact of different imaging modalities on distant recurrence-free interval. *Breast Cancer Research and Treatment*, 175(2), 419-428. <https://doi.org/10.1007/s10549-019-05205-z>

Copyright

Other than for strictly personal use, it is not permitted to download or to forward/distribute the text or part of it without the consent of the author(s) and/or copyright holder(s), unless the work is under an open content license (like Creative Commons).

Take-down policy

If you believe that this document breaches copyright please contact us providing details, and we will remove access to the work immediately and investigate your claim.

Downloaded from the University of Groningen/UMCG research database (Pure): <http://www.rug.nl/research/portal>. For technical reasons the number of authors shown on this cover page is limited to 10 maximum.



Screening for distant metastases in patients with ipsilateral breast tumor recurrence: the impact of different imaging modalities on distant recurrence-free interval

Ingrid G. M. Poodt¹ · Robert-Jan Schipper¹ · Bianca T. A. de Greef² · Guusje Vugts¹ · Adriana J. G. Maaskant-Braat³ · Frits H. Jansen⁴ · Dirk N. J. Wyndaele⁵ · Adri C. Voogd^{6,7} · Grard A. P. Nieuwenhuijzen¹ on behalf of the Sentinel Node And Recurrent Breast Cancer (SNARB) Research Group

Received: 5 February 2019 / Accepted: 15 March 2019 / Published online: 6 April 2019
© The Author(s) 2019

Abstract

Purpose In patients with ipsilateral breast tumor recurrence (IBTR), the detection of distant disease determines whether the intention of the treatment is curative or palliative. Therefore, adequate preoperative staging is imperative for optimal treatment planning. The aim of this study is to evaluate the impact of conventional imaging techniques, including chest X-ray and/or CT thorax-(abdomen), liver ultrasonography (US), and skeletal scintigraphy, on the distant recurrence-free interval (DRFI) in patients with IBTR, and to compare conventional imaging with ¹⁸F-FDG PET-CT or no imaging at all.

Methods This study was exclusively based on the information available at time of diagnoses of IBTR. To adjust for differences in baseline characteristics between the three imaging groups, a propensity score (PS) weighted method was used.

Results Of the 495 patients included in the study, 229 (46.3%) were staged with conventional imaging, 89 patients (19.8%) were staged with ¹⁸F-FDG PET-CT, and in 168 of the patients (33.9%) no imaging was used ($N=168$). After a follow-up of approximately 5 years, 14.5% of all patients developed a distant recurrence as first event after IBTR. After adjusting for the PS weights, the Cox regression analyses showed that the different staging methods had no significant impact on the DRFI.

Conclusions This study showed a wide variation in the use of imaging modalities for staging IBTR patients in the Netherlands. After using PS weighting, no statistically significant impact of the different imaging modalities on DRFI was shown. Based on these results, it is not possible to recommend staging for distant metastases using ¹⁸F-FDG PET-CT over conventional imaging techniques.

Keywords Breast cancer · Ipsilateral breast tumor recurrence · Preoperative screening · Conventional imaging · ¹⁸F-FDG PET-CT · Distant metastasis · Propensity score weight

Introduction

In patients with ipsilateral breast tumor recurrence (IBTR), adequate preoperative staging is imperative for tailoring optimal treatment plans. The absence or presence, and if so, the extensiveness of distant metastases determines the curative or palliative intent of the treatment of patients with IBTR [1]. To evaluate for distant metastases at the time of IBTR, preoperative staging is recommended [2–4]. Conventional imaging, including chest X-ray and/or CT thorax-(abdomen), ultrasonography (US) of the liver, and skeletal scintigraphy, is the standard of care in many hospitals [2–4].

Besides these conventional imaging techniques, studies have focused on the value of 18-Fluorine-2-Fluoro-2-deoxy-D-Glucose positron emission tomography (¹⁸F-FDG PET)

The members of Sentinel Node And Recurrent Breast Cancer (SNARB) Research Group are listed in the acknowledgement section.

Electronic supplementary material The online version of this article (<https://doi.org/10.1007/s10549-019-05205-z>) contains supplementary material, which is available to authorized users.

✉ Ingrid G. M. Poodt
ingridpoodt@gmail.com

Extended author information available on the last page of the article

and ^{18}F -FDG PET computer tomography (^{18}F -FDG PET-CT) in patients with cancer [5–8]. The combined ^{18}F -FDG PET and CT technique provides anatomical and functional information, and has been demonstrated to be an accurate technique in staging patients with IBTR and for the detection of distant metastases [4, 9–12]. In a systematic review, Pennant et al. reported a sensitivity of 96% and specificity of 89% for ^{18}F -FDG PET-CT [7]. Furthermore, ^{18}F -FDG PET-CT is able to screen the whole body, including regional lymph nodes, in one session and may reduce the need for additional diagnostic procedures often needed to further analyze lesions found on conventional staging images [13].

However, ^{18}F -FDG PET-CT is an expensive procedure and false-positive outcomes, caused for example by inflammatory processes, physiological muscle uptake, or old fracture sites, could result in unnecessary additional procedures as well [7]. False-negative results can occur due to low FDG uptake in some conditions, such as invasive lobular carcinoma, ongoing endocrine therapy, and small highly sclerotic skeletal lesions with low rate of actively replicating cells [14]. The clinical role of ^{18}F -FDG PET-CT remains controversial [15], since there is no evidence of the impact of ^{18}F -FDG PET-CT on patients' outcomes. Guidelines are still quite conservative in recommending the use of ^{18}F -FDG PET-CT as first tool for screening distant metastases, in both the primary and recurrent setting.

Theoretically, one could expect that patients screened with a more sensitive screening technique, such as ^{18}F -FDG PET-CT [7], would experience less distant recurrences during follow-up or would experience these later during follow-up compared to patients screened with conventional imaging or no staging at all. Besides, with a more sensitive screening technique less patients would receive unnecessary curative treatments associated with high morbidity. Therefore, the aim of this study is to evaluate the impact of conventional imaging versus ^{18}F -FDG PET-CT versus no imaging, on distant recurrence-free interval in patients diagnosed with IBTR, in order to optimize treatment planning.

Patients and methods

SNARB-study design

The Sentinel Node and Recurrent Breast cancer (SNARB) study is a multicenter national registration study in which 36 Dutch hospitals participated [16, 17]. Patients with clinically apparent ipsilateral or contralateral lymph node metastases and patients with distant metastases at the time of diagnosis of IBTR were excluded. A total of 536 patients with IBTR were included in the SNARB study. No obligatory requirements were formulated in the protocol

regarding the use of imaging modalities to stage patients diagnosed with an IBTR.

Patients

All patients with IBTR, treated with a curative intent, and staged cTxN0M0 were considered eligible for inclusion. All included patients were divided into three groups according to the preoperative staging procedure: conventional imaging, ^{18}F -FDG PET-CT, or no staging at all. Conventional imaging included the use of the following imaging techniques: (1) chest X-ray and/or CT thorax-(abdomen), (2) ultrasonography (US) of the liver or CT thorax-(abdomen), and (3) skeletal scintigraphy. Patients in the conventional imaging group who did not undergo a scan of the thorax, liver, and skeletal scintigraphy were excluded.

Definition of recurrences

Distant recurrences (DR) were defined as any evidence of disease outside the ipsilateral breast, contralateral breast, and regional lymph nodes. A regional recurrence (RR) was defined as any evidence of disease found in ipsilateral intramammary nodes, ipsi- and contralateral internal mammary nodes, ipsi- and contralateral axillary nodes, and ipsi- and contralateral infra- and supra-clavicular nodes [18, 19]. Lymph node recurrences found outside these nodal basins were defined as distant metastatic disease. An event in the contralateral breast was defined as a new primary tumor and was not considered a recurrence, unless it could be proven that it was metastatic disease [20].

Follow-up

In 2017, follow-up of the 536 patients in the SNARB study was updated. General practitioners were actively contacted for additional follow-up information when hospital records showed no outpatient clinic visits for more than 1 year. Date of last follow-up was documented as last visit to the outpatient clinic, date of last visit to the general practitioner, or date of death in case the patient had deceased. Follow-up time was defined as the time between date of surgery for IBTR and date of last follow-up.

Distant recurrence-free interval (DRFI) was defined as the time between date of IBTR surgery and date of diagnosis of a DR or date of last follow-up. Only distant recurrences developing as first event after IBTR were recorded as a distant event. Distant recurrences occurring after a local or regional re-recurrence following IBTR were censored.

Statistics

Only the information available at time of diagnosis of IBTR, so before systemic staging imaging, was used for the analyses. The baseline characteristics were compared between the three staging groups. Categorical variables were tested with a Chi-square statistics or Fisher exact test when necessary and continuous variables were tested with a one-way ANOVA analysis. A 2-sided p value of <0.05 was considered statistically significant.

The effect of the method of staging on the DRFI was analyzed with the use of propensity score (PS) adjustment. A PS was calculated for every patient, based on the possible confounders. Because the outcome of interest was divided in three staging methods groups, multinomial propensity scores were used. The propensity scores were calculated with the MNPS package, an extended version of the TWANG package, in R. To obtain the propensity score weights for multiple staging methods, a generalized boosted model (GBM) regression was used. The GBM was used with 3000 number of trees and different stopping rules were checked: the mean effect size, maximal effect size, mean Kolmogorov–Smirnov, and maximal Kolmogorov–Smirnov. For the specific research question, the average treatment estimation (ATE) comparison was used.

By using the GBM model, the overlaps between the three groups were checked. In practice, overlapping meant that every patient could have received each staging modality and that no values of the covariates occurred only in one of the staging groups. Box plots were used for comparing the distribution of propensity scores and testing the overlap. Generally, standardized mean differences of less than 0.20 were considered small (which is good), 0.40 were considered moderate, and 0.60 were considered large.

Next to the overlap, also the balance of the three groups was assessed. Finally, a combination of the overlap plot, the balance plots, and covariate table were used to assess whether the groups were sufficiently similar to support causal estimation of the primary research question.

After the propensity score weights were calculated, the weights were used in a weighted survival analysis to calculate the effect of the staging method on the DRFI. The effect was investigated with the use of Kaplan–Meier curves and tested with a Cox regression model. When a covariate was still unbalanced after PS weighting, the covariate was included in the Cox regression model to correct for it [21–23].

Results

Patients

Of the 536 patients for whom follow-up data were collected, 21 (4%) were lost to follow-up due to emigration, lack of

information, or withdrawal of informed consent. Of the 515 (96%) remaining patients, 20 patients were only partly screened for distant metastases and therefore excluded, resulting in a study cohort of 495 patients (92.4%).

The median age at the time of IBTR was 64.0 years (range 26–93). The median time from primary surgery to diagnosis of IBTR (DFI) was 10.6 years (range 0.4–32). The majority of the patients had a primary tumor ≤ 2 cm (55.4%), a primary negative nodal status (72.1%, as determined by sentinel lymph node biopsy and/or axillary lymph node dissection), and hormone receptor-positive, human epidermal growth receptor 2 (HER2)-negative (67.9%). The different covariates were divided per staging group are shown in Table 1, with the corresponding p values (unadjusted p value). In Table 1, it is shown that all variables are statistically significant, except for the median time from primary surgery to IBTR diagnosis. In the ^{18}F -FDG PET-CT group, more patients were primary treated with a mastectomy, and more patients had primary positive lymph nodes. In the no-staged group, the patients had a higher mean age at time of IBTR (66 years vs. 63 years in the conventional group and 62.5 years in the ^{18}F -FDG PET-CT group). Those patients who received no staging were treated with adjuvant systemic therapy in only 60.7% of the cases, compared to 73.4% in patients who were staged. There was no difference in the administration of adjuvant systemic therapy between the conventional imaging staged group and ^{18}F -FDG PET-CT, 74.2% vs 71.4%, respectively ($P=0.588$).

Preoperative staging modalities

Of the 495 patients, 229 patients (46.3%) underwent preoperative staging with conventional imaging, 89 patients (19.8%) with ^{18}F -FDG PET-CT, and 168 (33.9%) received no preoperative staging imaging ($N=168$) (Table 1). As shown in Fig. 1, the use of the different imaging procedures changed over time; the use of ^{18}F -FDG PET-CT increased from 6.5% in 2008–2010 to 25.2% in 2013–2014, while the use of conventional imaging decreased from 58.1 to 31.7%. In 2008–2010, 33.1% of patients received no preoperative staging imaging, and this percentage fluctuated to 29.8% in 2010–2011, 29.8% in 2011–2013, and 43.1% in 2013–2014.

Regional recurrences

Regional recurrences as first event after IBTR occurred in 16 patients after a median time of 2.2 years (range 0.4–7.0). In eight patients, the regional recurrence was located in the contralateral axilla ($N=8$). The other recurrences were located in the ipsilateral supraclavicular nodal area ($N=2$), ipsilateral axillary ($N=1$), parasternal ($N=2$) or contralateral infraclavicular nodal area ($N=1$), or in multiple regional nodal areas ($N=2$). The 6-year regional recurrence-free

Table 1 Patient, tumor, and treatment characteristics categorized by preoperative staging procedure after diagnosis of ipsilateral breast tumor recurrence

Characteristics	IBTR N=495		Conventional N=229		¹⁸ F-FDG PET-CT N=98		None N=168		Unadjusted <i>p</i> value	Adjusted <i>p</i> value
	N	%	N	%	N	%	N	%		
Primary surgery									<0.001	0.0167
Mastectomy	59	11.9	35	15.3	19	19.4	5	3.0		
Breast-conserving surgery	436	88.1	194	84.7	79	80.6	163	97.0		
Primary ax. surgery	30	6.1	7	3.1	4	4.1	19	11.3	0.0102	0.8045
No axillary staging	194	39.2	90	39.3	43	43.9	61	36.3		
SLNB	271	54.7	132	57.6	51	52.0	88	52.4		
(c)ALND									<0.001	0.4613
Primary nodal status										
Negative	357	72.1	172	75.1	65	66.3	120	71.4		
Positive	90	18.2	47	20.5	27	27.6	16	9.5		
Unknown	48	9.7	10	4.4	6	6.1	32	19.0		
Primary tumor size									0.0026	0.5508
<20 mm	274	55.4	135	59.0	57	58.2	82	48.8		
21–50 mm	87	17.6	46	20.1	19	19.4	22	13.1		
Unknown	134	27.1	48	21.0	22	22.4	64	38.1		
Primary tumor grade									<0.001	0.7498
I	77	15.6	40	17.5	18	18.4	19	11.3		
II	114	23.0	62	27.1	22	22.4	30	17.9		
III	68	13.7	35	15.3	21	21.4	12	7.1		
Unknown	236	47.7	92	40.2	37	37.8	107	63.7		
Hormone status primary									0.0056	0.7568
ER and PR negative	49	9.9	26	11.4	10	10.2	13	7.7		
ER/PR positive	252	50.9	130	56.8	52	53.1	70	41.7		
Unknown	194	39.2	73	31.9	36	36.7	85	50.6		
Time from primary surgery to IBTR diagnosis									0.0913	0.765/0.415
Median, years	10.6 (0.4–31.8)		9.1 (0.5–30.0)		9.6 (0.4–30.2)		11.9 (0.4–31.8)		<0.001	0.5461
Year of diagnosis										
0–124 pt. (2002–2010)	124	25.1	72	31.4	8	8.2	44	26.2		
124–248 pt. (2010–2011)	124	25.1	61	26.6	29	29.6	34	20.2		
248–372 pt. (2011–2013)	124	25.1	57	24.9	30	30.6	37	22.0		
372–496 pt. (2013–2014)	123	24.8	39	17.0	31	31.6	53	31.5		
Age IBTR, median years (range)									0.004	0.627/0.702
Median, years	64.0 (26.0–93.0)		63.0 (27.0–93.0)		62.5 (26.0–81.0)		66.0 (37.0–88.0)		0.019	0.7829
Receptor status IBTR										
Triple negative	62	12.5	32	14.0	13	13.3	17	10.1		

Table 1 (continued)

Characteristics	IBTR N = 495		Conventional N = 229		¹⁸ F-FDG PET-CT N = 98		None N = 168		Unadjusted <i>p</i> value	Adjusted <i>p</i> value
	N	%	N	%	N	%	N	%		
HRneg_Her2pos	17	3.4	10	4.4	4	4.1	3	1.8		
Hrpos_Her2pos	32	6.5	15	6.6	4	4.1	13	7.7		
HRpos_Her2neg	336	67.9	157	68.6	72	73.5	107	63.7		
Unknown	48	9.7	15	6.6	5	5.1	28	16.7		

IBTR ipsilateral breast tumor recurrence, ¹⁸F-FDG PET-CT 18-Fluorine 2-Fluoro-2-deoxy-D-Glucose positron emission tomography-computer tomography, ax axillary, (c)ALND (completion) axillary lymph node dissection, SLNB sentinel lymph node biopsy, mm millimeter, ER estrogen receptor, PR progesterone receptor, HR hormone receptor, HER2 human epidermal growth receptor 2, neg negative, pos positive, pt patient

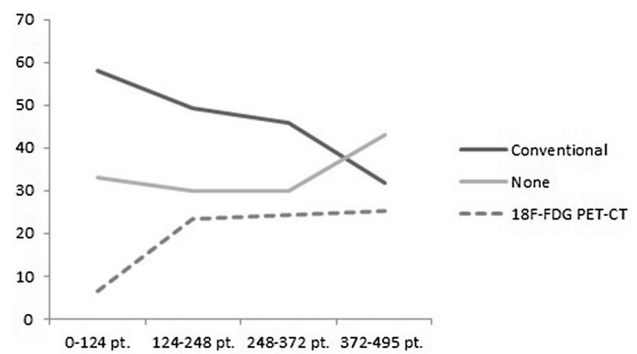


Fig. 1 Percentages of IBTR patients staged with ¹⁸F-FDG PET-CT imaging versus conventional imaging versus no imaging over time. ¹⁸F-FDG PET-CT 18-Fluorine-2-Fluoro-2-deoxy-D-Glucose positron emission tomography-computer tomography. The group of 0–124 were the first 124 patient treated for IBTR in 2002–2010, second group of 124 patients: 124–248 treated in 2010–2011, third group: 248–372 treated in 2011–2013, and 372–495 the last group of patients treated in 2013–2014

interval was 96.1% (CI 94.1%–98.1%). Patients screened with conventional imaging had a 6-year RR of 96.4% vs. 96.2% and 95.3% for patients with no imaging and ¹⁸F-FDG PET-CT ($p = 0.766$).

Distant recurrences

After a median follow-up period of 4.9 years (range 0.3–13.2) after IBTR, 82 (16.5%) patients had experienced a distant recurrence, and in 10 (12.2%) of these patients a distant recurrence was diagnosed after a local re-recurrence ($N = 4$) or after a regional re-recurrence ($N = 6$). Predominant metastatic sites were the bones (30.6%; $N = 22$), the lungs (18.1%; $N = 13$), the liver (12.5%; $N = 9$), the brain (8.3%; $N = 6$), or to other places (12.5%; $N = 9$). In 13 patients, distant recurrences were found in multiple organs (18.1%; $N = 13$). Distant recurrence as first event occurred after a median time of 2.7 years (range 0.04–8.7) following treatment of IBTR. The mean time of developing a distant recurrence after IBTR did not significantly differ between patients screened with ¹⁸F-FDG PET-CT, conventional imaging, or no imaging ($p = 0.648$).

Propensity score weighting, check PS weights, overlapping, and balance

The GBM was used and the convergence was achieved in all comparisons (Supplemental material, Fig. 3a, b, c). The overlap between the groups is shown in Table 1, but also in the box plots shown in Figs. 4a, b, c (Supplemental material) and was good to moderate. Next to the overlap, the balance was also checked and is shown in Fig. 5 (Supplemental material). The balance looks sufficient; however, the

covariate primary surgery (breast-conserving therapy versus mastectomy) was still not balanced correctly after propensity score weighting.

Baseline characteristics after PS weights

In Table 1, the adjusted *p* values, after adjusting the PS weights to the sample, are shown. After adjusting the PS weights, all the covariates, except for the covariate primary surgery, are no longer statistically significant and therefore balanced between the staging groups. Only the variable ‘primary surgery’ is taken as a covariate next to the PS weights in the cox regression model.

Survival curves of DRFI

Figure 2 presents the Kaplan Meier curves for the three different staging modalities (without correcting for the unbalanced covariate ‘primary surgery’) and showed no impact of the different imaging groups on the DRFI. Finally, Cox regression analyses were performed with and without the unbalanced covariate ‘primary surgery.’ The different

staging modalities had no significant effect on the DRFI with a HR 0.86 (95% CI 0.37–1.98) for ^{18}F -FDG PET-CT compared to no imaging and HR 0.96 (95% CI 0.55–1.67) for conventional imaging compared to no imaging (Table 2). By adding the covariate primary surgery to the Cox regression model (because of the imbalance after weighting), the effect of the different imaging groups remained (Table 2); however, the proportional hazard (PH) assumption became questionable. To assure the PH assumptions that were made, sensitivity analyses were performed for the primary breast-conserving surgery group and showed no significant effect of the different staging modalities on the DRFI.

Discussion

In this nationwide cohort of 495 patients included in the SNARB study with an ipsilateral breast tumor recurrence, 46.3% were preoperatively staged with conventional imaging, 19.8% with ^{18}F -FDG PET-CT, and 33.9% received no preoperative imaging at all to detect distant metastases. Distant recurrences, as a first event after treatment of IBTR,

Fig. 2 Propensity score weighted Kaplan–Meier curves of distant recurrence-free interval according to staging method groups. ^{18}F -FDG PET-CT 18-Fluorine-2-Fluoro-2-deoxy-D-Glucose positron emission tomography-computer tomography

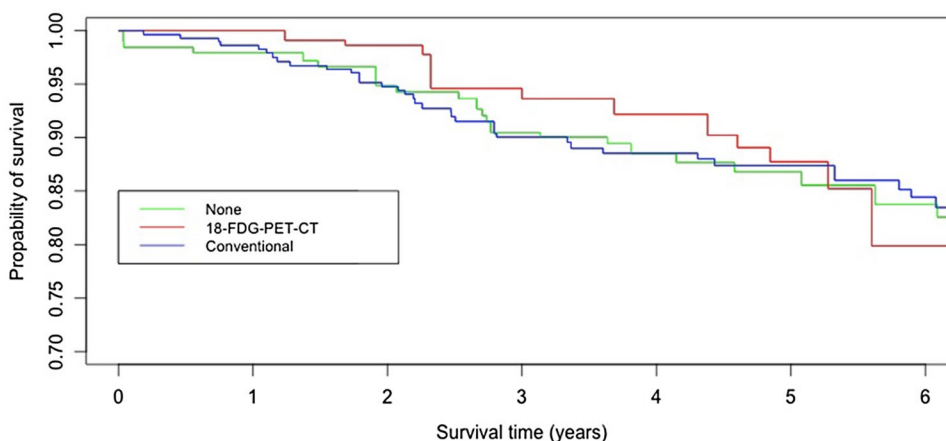


Table 2 Cox regression analyses for distant recurrence-free interval

	Coefficients	Standard error	<i>p</i> value	Hazard ratio (95% confidence interval)
Without covariate				
None	<i>Ref</i>			
^{18}F -FDG PET-CT	− 0.15425	0.42637	0.718	0.8571 (0.3716–1.977)
Conventional	− 0.04582	0.28627	0.873	0.9552 (0.5450–1.674)
With covariate				
None	<i>Ref</i>			
^{18}F -FDG PET-CT	− 0.2523	0.4568	0.581	0.7770 (0.3147–1.902)
Conventional	− 0.1398	0.3122	0.654	0.8695 (0.4716–1.603)
Primary surgery	− 0.6393	0.4219	0.130	0.5277 (0.2308–1.206)

^{18}F -FDG PET-CT 18-Fluorine-2-Fluoro-2-deoxy-D-Glucose positron emission tomography-computer tomography

occurred in 72 patients (14.5%). Propensity score analyses showed no difference in the likelihood of developing distant recurrence, according to the imaging strategy used at time of IBTR.

At baseline, all the covariates differed significantly between the three staging groups, except for the median time from primary surgery to IBTR diagnosis. To correct for these baseline differences, a PS analyses was used, with the aim to reduce or even eliminate confounding. PS methods are particularly appealing when multiple covariables are studied, and the number of events is rare [24, 25]. After propensity score analyses, we did not find a statistically significant difference in the risk of distant metastases between the three staging groups. This finding is in accordance with the results of a study by Neuman et al., who reported no difference in the risk of developing distant recurrence between patients with imaging versus without imaging at the time of locoregional recurrence [26].

Historically, IBTR has been considered a risk factor for distant recurrence and thus resulting in a poorer prognosis [26–28]. Synchronous distant metastases are reported in up to 15–30% of patients with an IBTR and up to 35% of patients with isolated lymph node recurrence [26]. Factors found to be associated with the presence of synchronous metastases are the TNM stage of the primary tumor, with patients with more advanced stages having a higher risk [29], and the type of locoregional recurrence, with patients with lymph node recurrences having a higher risk compared to patients with IBTR [26]. Because of this high risk of synchronous distant metastases, the recommendation is to stage all patients diagnosed with an IBTR for distant metastases.

In the current study, we did not observe a difference in the meantime to detection of distant recurrence, nor in the risk of regional recurrences after IBTR, between the different imaging strategies. Although current guidelines recommend the use of chest X-ray, liver ultrasonography or CT, and bone scintigraphy, these imaging modalities have been shown to be less sensitive and specific than ^{18}F -FDG PET-CT [13]. Theoretically, occult metastases could be present at time of diagnosis of IBTR, though too small for detection on conventional imaging modalities. Staging using a more sensitive staging strategy, i.e., ^{18}F -FDG PET-CT could prevent false-negative outcomes, by detecting the smaller distant metastasis. Synchronous small metastases missed at time of IBT could continue to grow, and could become clinical overt during follow-up. Thereby, ^{18}F -FDG PET-CT is deemed to be especially valuable in the detection of extra-axillary nodal metastases [13, 30]. In the current study, the lack of difference in time to detection of distant recurrence and in the regional recurrence risk does not support these hypotheses.

Imperative for patients is the impact of distant staging on patients' treatment plan. Changes in treatment plans could include initiation or avoidance of medical treatment

such as hormone therapy and chemotherapy, but also surgical treatment of IBTR [7]. If extensive metastatic disease is diagnosed, patients are generally considered not curable and treatment is aimed to alleviate symptoms and, if possible, prolong survival [5, 7]. Omitting local treatment spares patients the morbidity associated with surgery and/or radiotherapy and minimizes the impact of these treatments on quality of life. Therefore, no staging at time of IBTR may lead to unnecessary exposure to potentially harmful local surgical procedures [31]. Furthermore, guidelines recommend treating patients with IBTR, especially those with estrogen receptor-negative tumors, with adjuvant chemotherapy, while in the case of synchronous metastasis the standard treatment with adjuvant chemotherapy will be postponed until having symptomatic metastasis. Neuman et al. found that 27% of 445 patients with a locoregional recurrence had synchronous distant metastases at time of their IBTR [26]. Hypothetically, choosing not to stage patients with IBTR will lead to overtreatment of up to those 27% of patients. The impact on patient management and patient's physical as well as mental status underscores the need for accurate staging modalities in this group of IBTR patients who have a variety of treatment options available to them.

Over time, many studies presented the pros and cons of both ^{18}F -FDG PET-CT and conventional imaging. ^{18}F -FDG PET-CT is able to perform a whole-body evaluation in one session [5]. This will shorten the time until start of treatment and perhaps will reduce health care-related costs, due a to lower number of hospitals visits, additional diagnostic procedures, and unnecessary curative treatments [13]. However, further studies are needed to investigate the cost-effectiveness of ^{18}F -FDG PET-CT, whether these possible lower costs would indeed outweigh the high costs of ^{18}F -FDG PET-CT. As was shown in this study, the percentage of patients with isolated IBTR screened with ^{18}F -FDG PET-CT increased over the years, while the use of conventional imaging decreased. Whether ^{18}F -FDG PET-CT should replace conventional imaging in the preoperative staging of patients with IBTR should preferably depend on more aspects besides its diagnostic accuracy and cost-effectiveness, but also on the impact on prognosis and quality of life.

Some caveats apply to this study; because of its retrospective nature, reasons to use conventional imaging, ^{18}F -FDG PET-CT, or no imaging for staging were not always reported in the patient files. All patients with IBTR and synchronous metastatic disease were not considered for inclusion and therefore not registered in the database. Data are lacking regarding the numbers of excluded patients and how these synchronous metastasis were detected. Further research is encouraged to evaluate the impact of the different imaging modalities on the prognosis and to determine factors associated with an increased risk of synchronous metastases. Lastly, the diagnostic accuracy of ^{18}F -FDG PET-CT and

conventional imaging modalities are likely to vary depending on the different techniques used between the different hospitals, regarding length of radioisotope uptake, image acquisition time, and the mode of image interpretation. Nonetheless, the current study is based on the largest cohort of patients with an IBTR, as far as we are aware of. Furthermore, this is a multicenter, nationwide study providing data of different types of hospitals in the Netherlands, representative for IBTR patients in daily practice.

Conclusions

This study showed a wide variation in the use of imaging modalities for staging of IBTR patients in the Netherlands. After propensity score weighting, no statistically significant impact of the different imaging modalities on the DRFI was shown. Based on these results, it is not possible to recommend staging for distant metastases using ¹⁸F-FDG PET-CT over conventional imaging techniques.

Acknowledgements Collaborators of the Sentinel Node And Recurrent Breast Cancer (SNARB) study group: R. M. H. Roumen, MD, PhD—Department of Surgery, Máxima Medical Center, Veldhoven/Eindhoven, The Netherlands; E. J. T. Luiten, MD, PhD—Department of Surgery, Amphia Hospital, Breda, The Netherlands; Prof. E. J. T. Rutgers, MD, PhD—Department of Surgery, The Netherlands Cancer Institute and Antoni van Leeuwenhoek Hospital, Amsterdam, The Netherlands; M. T. F. D. Vrancken-Peeters, MD, PhD—Department of Surgery, The Netherlands Cancer Institute and Antoni van Leeuwenhoek Hospital, Amsterdam, The Netherlands; M. Bessems, MD, PhD—Department of Surgery, Jeroen Bosch Hospital, Den Bosch, The Netherlands; J. M. Klaase, MD, PhD—Department of Surgery, Medical Spectrum Twente, Enschede, The Netherlands; S. Muller, MD—Department of Surgery, Zaans Medical Center, Zaandam, The Netherlands; A. B. Francken, MD, PhD—Department of Surgery, Isala, Zwolle, The Netherlands; T. Van Dalen, MD, PhD—Department of Surgery, Diaconessen Hospital, Utrecht, The Netherlands; L. Jansen, MD, PhD—Department of Surgery, University Medical Center Groningen, Groningen, The Netherlands; S. (A) Koopal, MD, PhD—Department of Surgery, Medical Center Leeuwarden, Leeuwarden, The Netherlands; Y. L. J. Vissers, MD, PhD—Department of Surgery, Zuyderland Medical Center, Sittard, The Netherlands; M. L. Smidt, MD, PhD—Department of Surgery, Maastricht University Medical Center, Maastricht, The Netherlands; J. W. S. Merkus, MD, PhD—Department of Surgery, Haga Hospital, The Hague, The Netherlands; C. M. E. Contant, MD, PhD—Department of Surgery, Maastricht Hospital, Rotterdam, The Netherlands; P. H. Veldman, MD, PhD—Department of Surgery, de Tjongerschans Hospital, Heerenveen, The Netherlands; E. M. H. Linthorst-Niers, MD, PhD—Department of Surgery, Groene Hart Hospital, Gouda, The Netherlands; J. R. van der Sijp, MD, PhD—Department of Surgery, Medical Center Haaglanden, The Hague, The Netherlands; O. R. Guicherit, MD, PhD—Department of Surgery, Bronovo Hospital, The Hague, The Netherlands; L. (B) Koppert, MD, PhD—Department of Oncological Surgery, Erasmus MC Cancer Institute, Rotterdam, The Netherlands; A. M. Bosch, MD, PhD—Department of Surgery, Gelderse Vallei Hospital, Ede, The Netherlands; L. J. A. Strobbe, MD, PhD—Department of Surgery, Canisius Wilhelmina Hospital, Nijmegen, The Netherlands; M. S. Schlooz-Vries, MD—Department of Surgery, Radboud University Medical Center, Nijmegen, The Netherlands; I. E. Arntz, MD, PhD—Department of Surgery, Bravis

Hospital, Roosendaal, The Netherlands; J. (A) van Essen, MD, PhD—Department of Surgery, Sint Jans Gasthuis, Weert, The Netherlands; J. W. D. de Waard, MD, PhD—Department of Surgery, Westfriesgasthuis, Hoorn, The Netherlands; (B) C. Vrouenraets, MD, PhD—Department of Surgery, Onze Lieve Vrouwe Gasthuis, Amsterdam, The Netherlands; and B. van Ooijen, MD, PhD—Department of Surgery, Meander Medical Center, Amersfoort, The Netherlands.

Compliance with ethical standards

Conflict of interest The authors declare that they have no conflict of interest.

Ethical approval This article does not contain any studies with animals performed by any of the authors.

Ethical standards Research done for this study complies with the current laws of The Netherlands.

Informed consent Informed consent was obtained from all individual participants included in the study.

Open Access This article is distributed under the terms of the Creative Commons Attribution 4.0 International License (<http://creativecommons.org/licenses/by/4.0/>), which permits unrestricted use, distribution, and reproduction in any medium, provided you give appropriate credit to the original author(s) and the source, provide a link to the Creative Commons license, and indicate if changes were made.

References

1. Trovo M, Furlan C, Polesel J, Fiorica F, Arcangeli S, Gijaj-Levra N, Alongi F, Del Conte A, Militello L, Muraro E, Martorelli D, Spazzapan S, Berretta M (2018) Radical radiation therapy for oligometastatic breast cancer: results of a prospective phase II trial. *Radiother Oncol* 126(1):177–180. <https://doi.org/10.1016/j.radonc.2017.08.032>
2. Cardoso F, Senkus E, Costa A, Papadopoulos E, Aapro M, Andre F, Harbeck N, Aguilar Lopez B, Barrios CH, Bergh J, Biganzoli L, Boers-Doets CB, Cardoso MJ, Carey LA, Cortes J, Curigliano G, Dieras V, El Saghir NS, Eniu A, Fallowfield L, Francis PA, Gelmon K, Johnston SRD, Kaufman B, Koppikar S, Krop IE, Mayer M, Nakigudde G, Offersen BV, Ohno S, Pagani O, Paluch-Shimon S, Penault-Llorca F, Prat A, Rugo HS, Sledge GW, Spence D, Thomssen C, Vorobiof DA, Xu B, Norton L, Winer EP (2018) 4th ESO-ESMO international consensus guidelines for advanced breast cancer (ABC 4) dagger. *Ann Oncol* 29(8):1634–1657. <https://doi.org/10.1093/annonc/mdy192>
3. Gradishar WJ, Anderson BO, Balassanian R, Blair SL, Burstein HJ, Cyr A, Elias AD, Farrar WB, Forero A, Giordano SH, Goetz M, Goldstein LJ, Hudis CA, Isakoff SJ, Marcom PK, Mayer IA, McCormick B, Moran M, Patel SA, Pierce LJ, Reed EC, Salerno KE, Schwartzberg LS, Smith KL, Smith ML, Soliman H, Somlo G, Telli M, Ward JH, Sheard DA, Kumar R (2016) Invasive Breast Cancer Version 1.2016, NCCN Clinical Practice Guidelines in Oncology. *J Natl Compr Cancer Netw* 14(3):324–354
4. Nationaal Borstkanker Overleg Nederland (NABON). Richtlijn behandeling van het mammacarcinoom. <http://www.oncoline.nl>. Accessed 2 Mar 2012
5. Aukema TS, Rutgers EJ, Vogel WV, Teertstra HJ, Oldenburg HS, Vrancken Peeters MT, Wesseling J, Russell NS, Valdes Olmos RA (2010) The role of FDG PET/CT in patients with

- locoregional breast cancer recurrence: a comparison to conventional imaging techniques. *Eur J Surg Oncol* 36(4):387–392. <https://doi.org/10.1016/j.ejso.2009.11.009>
6. Mahner S, Schirrmacher S, Brenner W, Jenicke L, Habermann CR, Avril N, Dose-Schwarz J (2008) Comparison between positron emission tomography using 2-[fluorine-18]fluoro-2-deoxy-D-glucose, conventional imaging and computed tomography for staging of breast cancer. *Ann Oncol* 19(7):1249–1254. <https://doi.org/10.1093/annonc/mdn057>
 7. Pennant M, Takwoingi Y, Pennant L, Davenport C, Fry-Smith A, Eisinga A, Andronis L, Arvanitis T, Deeks J, Hyde C (2010) A systematic review of positron emission tomography (PET) and positron emission tomography/computed tomography (PET/CT) for the diagnosis of breast cancer recurrence. *Health Technol Assess* 14(50):1–103. <https://doi.org/10.3310/hta14500>
 8. Rosen EL, Eubank WB, Mankoff DA (2007) FDG PET, PET/CT, and breast cancer imaging. *Radiographics* 27(Suppl 1):S215–S229. <https://doi.org/10.1148/rg.27si075517>
 9. Antoch G, Saoudi N, Kuehl H, Dahmen G, Mueller SP, Beyer T, Bockisch A, Debatin JF, Freudenberg LS (2004) Accuracy of whole-body dual-modality fluorine-18-2-fluoro-2-deoxy-D-glucose positron emission tomography and computed tomography (FDG-PET/CT) for tumor staging in solid tumors: comparison with CT and PET. *J Clin Oncol* 22(21):4357–4368. <https://doi.org/10.1200/JCO.2004.08.120>
 10. Fueger BJ, Weber W, Quon A, Crawford TL, Allen-Auerbach MS, Halpern BS, Ratib O, Phelps ME, Czernin J (2005) Performance of 2-deoxy-2-[F-18]fluoro-D-glucose positron emission tomography and integrated PET/CT in restaged breast cancer patients. *Mol Imaging Biol* 7(5):369–376. <https://doi.org/10.1007/s11307-005-0013-4>
 11. Poeppel TD, Krause BJ, Heusner TA, Boy C, Bockisch A, Antoch G (2009) PET/CT for the staging and follow-up of patients with malignancies. *Eur J Radiol* 70(3):382–392. <https://doi.org/10.1016/j.ejrad.2009.03.051>
 12. Czernin J, Satyamurthy N, Schiepers C (2010) Molecular mechanisms of bone 18F-NaF deposition. *J Nucl Med* 51(12):1826–1829. <https://doi.org/10.2967/jnumed.110.077933>
 13. Jager JJ, Keymeulen K, Beets-Tan RG, Hupperets P, van Kroonenburgh M, Houben R, de Ruyscher D, Lambin P, Boersma LJ (2010) FDG-PET-CT for staging of high-risk breast cancer patients reduces the number of further examinations: a pilot study. *Acta Oncol* (Stockholm Sweden) 49(2):185–191. <https://doi.org/10.3109/02841860903440262>
 14. Piva R, Ticconi F, Ceriani V, Scalorbi F, Fiz F, Capitano S, Bauckneht M, Cittadini G, Sambuceti G, Morbelli S (2017) Comparative diagnostic accuracy of 18F-FDG PET/CT for breast cancer recurrence. *Breast Cancer* (Dove Medical Press) 9:461–471. <https://doi.org/10.2147/BCTT.S111098>
 15. Krammer J, Schnitzer A, Kaiser CG, Buesing KA, Sperk E, Brade J, Wasgindt S, Suetterlin M, Schoenberg SO, Sutton EJ, Wasser K (2015) 18 F-FDG PET/CT for initial staging in breast cancer patients - Is there a relevant impact on treatment planning compared to conventional staging modalities? *Eur Radiol* 25(8):2460–2469. <https://doi.org/10.1007/s00330-015-3630-6>
 16. Maaskant-Braat AJ, Roumen RM, Voogd AC, Pijpers R, Luiten EJ, Rutgers EJ, Nieuwenhuijzen GA (2013) Sentinel Node and Recurrent Breast Cancer (SNARB): results of a nationwide registration study. *Ann Surg Oncol* 20(2):620–626. <https://doi.org/10.1245/s10434-012-2625-7>
 17. Vugts G, Maaskant-Braat AJ, Voogd AC, van Riet YE, Luiten EJ, Rutgers EJ, Rutten HJ, Roumen RM, Nieuwenhuijzen GA (2015) Repeat sentinel node biopsy should be considered in patients with locally recurrent breast cancer. *Breast Cancer Res Treat* 153(3):549–556. <https://doi.org/10.1007/s10549-015-3571-4>
 18. Moosdorff M, Vugts G, Maaskant-Braat AJ, Strobbe LJ, Voogd AC, Smidt ML, Nieuwenhuijzen GA (2015) Contralateral lymph node recurrence in breast cancer: regional event rather than distant metastatic disease. A systematic review of the literature. *Eur J Surg Oncol* 41(9):1128–1136. <https://doi.org/10.1016/j.ejso.2015.05.015>
 19. Poodt IGM, Vugts G, Maaskant-Braat AJG, Schipper RJ, Voogd AC, Nieuwenhuijzen GAP, Sentinel N, Recurrent Breast Cancer study g (2018) Risk of regional recurrence after negative repeat sentinel lymph node biopsy in patients with ipsilateral breast tumor recurrence. *Ann Surg Oncol*. <https://doi.org/10.1245/s10434-018-6384-y>
 20. Gourgou-Bourgade S, Cameron D, Poortmans P, Asselain B, Azria D, Cardoso F, A'Hern R, Bliss J, Bogaerts J, Bonnefoi H, Brain E, Cardoso MJ, Chibaudel B, Coleman R, Cufer T, Dal Lago L, Dalenc F, De Azambuja E, Debled M, Delalogue S, Filleron T, Gligorov J, Gutowski M, Jacot W, Kirkove C, MacGrogan G, Michiels S, Negreiros I, Offersen BV, Penault Llorca F, Pruneri G, Roche H, Russell NS, Schmitt F, Servent V, Thurlimann B, Untch M, van der Hage JA, van Tienhoven G, Wildiers H, Yarnold J, Bonnetain F, Mathoulin-Pelissier S, Bellera C, Dabakuyo-Yonli TS (2015) Guidelines for time-to-event end point definitions in breast cancer trials: results of the DATECAN initiative (Definition for the Assessment of Time-to-event Endpoints in CANcer trials). *Ann Oncol* 26(12):2505–2506. <https://doi.org/10.1093/annonc/mdv478>
 21. Bang H, Robins JM (2005) Doubly robust estimation in missing data and causal inference models. *Biometrics* 61(4):962–973. <https://doi.org/10.1111/j.1541-0420.2005.00377.x>
 22. Hullsiek KH, Louis TA (2002) Propensity score modeling strategies for the causal analysis of observational data. *Biostatistics* 3(2):179–193. <https://doi.org/10.1093/biostatistics/3.2.179>
 23. Nguyen TL, Collins GS, Spence J, Dures JP, Devereaux PJ, Landais P, Le Manach Y (2017) Double-adjustment in propensity score matching analysis: choosing a threshold for considering residual imbalance. *BMC Med Res Methodol* 17(1):78. <https://doi.org/10.1186/s12874-017-0338-0>
 24. Cepeda MS, Boston R, Farrar JT, Strom BL (2003) Comparison of logistic regression versus propensity score when the number of events is low and there are multiple confounders. *Am J Epidemiol* 158(3):280–287
 25. McCaffrey DF, Griffin BA, Almirall D, Slaughter ME, Ramchand R, Burgette LF (2013) A tutorial on propensity score estimation for multiple treatments using generalized boosted models. *Stat Med* 32(19):3388–3414. <https://doi.org/10.1002/sim.5753>
 26. Neuman HB, Schumacher JR, Francescatti AB, Adesoye T, Edge SB, Vanness DJ, Yu M, McKellar D, Winchester DP, Greenberg CC, Alliance/American College of Surgeons Clinical Research Program Cancer Care Delivery Research Breast Cancer Surveillance Working G (2018) Risk of synchronous distant recurrence at time of locoregional recurrence in patients with stage II and III breast cancer (AFT-01). *J Clin Oncol* 36(10):975–980. <https://doi.org/10.1200/JCO.2017.75.5389>
 27. Anderson SJ, Wapnir I, Dignam JJ, Fisher B, Mamounas EP, Jeong JH, Geyer CE Jr, Wickerham DL, Costantino JP, Wolmark N (2009) Prognosis after ipsilateral breast tumor recurrence and locoregional recurrences in patients treated by breast-conserving therapy in five National Surgical Adjuvant Breast and Bowel Project protocols of node-negative breast cancer. *J Clin Oncol* 27(15):2466–2473. <https://doi.org/10.1200/JCO.2008.19.8424>
 28. Wapnir IL, Anderson SJ, Mamounas EP, Geyer CE Jr, Jeong JH, Tan-Chiu E, Fisher B, Wolmark N (2006) Prognosis after ipsilateral breast tumor recurrence and locoregional recurrences in five National Surgical Adjuvant Breast and Bowel Project node-positive adjuvant breast cancer trials. *J Clin Oncol* 24(13):2028–2037. <https://doi.org/10.1200/JCO.2005.04.3273>

29. Singletary SE, Allred C, Ashley P, Bassett LW, Berry D, Bland KI, Borgen PI, Clark G, Edge SB, Hayes DF, Hughes LL, Hutter RV, Morrow M, Page DL, Recht A, Theriault RL, Thor A, Weaver DL, Wieand HS, Greene FL (2002) Revision of the American Joint Committee on Cancer staging system for breast cancer. *J Clin Oncol* 20(17):3628–3636. <https://doi.org/10.1200/JCO.2002.02.026>
30. Eubank WB, Mankoff DA, Takasugi J, Vesselle H, Eary JF, Shanley TJ, Gralow JR, Charlop A, Ellis GK, Lindsley KL, Austin-Seymour MM, Funkhouser CP, Livingston RB (2001) 18fluoro-deoxyglucose positron emission tomography to detect mediastinal or internal mammary metastases in breast cancer. *J Clin Oncol* 19(15):3516–3523. <https://doi.org/10.1200/JCO.2001.19.15.3516>
31. Eubank WB, Mankoff D, Bhattacharya M, Gralow J, Linden H, Ellis G, Lindsley S, Austin-Seymour M, Livingston R (2004) Impact of FDG PET on defining the extent of disease and on the treatment of patients with recurrent or metastatic breast cancer. *AJR Am J Roentgenol* 183(2):479–486. <https://doi.org/10.2214/ajr.183.2.1830479>

Publisher's Note Springer Nature remains neutral with regard to jurisdictional claims in published maps and institutional affiliations.

Affiliations

Ingrid G. M. Poodt¹  · Robert-Jan Schipper¹ · Bianca T. A. de Greef² · Guusje Vugts¹ · Adriana J. G. Maaskant-Braat³ · Frits H. Jansen⁴ · Dirk N. J. Wyndaele⁵ · Adri C. Voogd^{6,7} · Grard A. P. Nieuwenhuijzen¹ on behalf of the Sentinel Node And Recurrent Breast Cancer (SNARB) Research Group

¹ Department of Surgery, Catharina Hospital, Michelangelolaan 2, 5623 EJ Eindhoven, The Netherlands

² Department of Clinical Epidemiology and Medical Technology Assessment, Maastricht University Medical Center, Maastricht, The Netherlands

³ Department of Surgery, Máxima Medical Center, Veldhoven, Eindhoven, The Netherlands

⁴ Department of Radiology, Catharina Hospital, Eindhoven, The Netherlands

⁵ Department of Nuclear Medicine, Catharina Hospital, Eindhoven, The Netherlands

⁶ Department of Epidemiology, Faculty of Health Medicine and Life Sciences, Research Institute Growth and Development (GROW), Maastricht University, Maastricht, The Netherlands

⁷ Utrecht Cancer Registry, Netherlands Comprehensive Cancer Organization, Utrecht, The Netherlands