



University of Groningen

## Synthetic Observations of the HI Line in SPH-Simulated Spiral Galaxies

Douglas, Kevin A.; Acreman, David; Dobbs, Clare; Brunt, Chris

*Published in:*

Panoramic Radio Astronomy: 1-2 Ghz Research on Galaxy Evolution

**IMPORTANT NOTE: You are advised to consult the publisher's version (publisher's PDF) if you wish to cite from it. Please check the document version below.**

*Document Version*

Publisher's PDF, also known as Version of record

*Publication date:*

2009

[Link to publication in University of Groningen/UMCG research database](#)

*Citation for published version (APA):*

Douglas, K. A., Acreman, D., Dobbs, C., & Brunt, C. (2009). Synthetic Observations of the HI Line in SPH-Simulated Spiral Galaxies. In *Panoramic Radio Astronomy: 1-2 Ghz Research on Galaxy Evolution* University of Groningen.

### Copyright

Other than for strictly personal use, it is not permitted to download or to forward/distribute the text or part of it without the consent of the author(s) and/or copyright holder(s), unless the work is under an open content license (like Creative Commons).

### Take-down policy

If you believe that this document breaches copyright please contact us providing details, and we will remove access to the work immediately and investigate your claim.

Downloaded from the University of Groningen/UMCG research database (Pure): <http://www.rug.nl/research/portal>. For technical reasons the number of authors shown on this cover page is limited to 10 maximum.

## Synthetic Observations of the HI Line in SPH-Simulated Spiral Galaxies

---

**Kevin A. Douglas\***

*University of Exeter*

*E-mail: douglas@astro.ex.ac.uk*

**David Acreman, Clare Dobbs, Chris Brunt**

*University of Exeter*

Using the radiative transfer code Torus, we produce spectral-line cubes of the predicted HI profile from global SPH simulations of spiral galaxies. Torus grids the SPH galaxy using Adaptive Mesh Refinement, then applies a ray-tracing method to infer the HI profile along the line(s) of sight. The gridded galaxy can be observed from any direction, which enables us to model the observed HI profile for galaxies of any orientation. We can also place the observer inside the galaxy, to simulate HI observations taken from the Earth's position in the Milky Way.

*Panoramic Radio Astronomy: Wide-field 1-2 GHz research on galaxy evolution*

*June 2-5 2009*

*Groningen, the Netherlands*

---

\*Speaker.

## 1. Introduction

A significant difference between observations and numerical simulations of the interstellar medium is that while observers detect emission through spectral line or continuum processes, often using frequency/wavelength information to convert to radial velocity scales, numerical models directly trace the total density of interstellar matter, with no reliance on kinematics to assign distances to features seen in the simulations. We seek to bridge that gap, using the Torus code [1] which can apply radiative transfer to a gridded simulation (in our case an entire galaxy) and predict the emission from selected tracer species.

## 2. Torus and the 21-cm line

As one of the best tracers of interstellar and galactic structure, the 21-cm neutral hydrogen (HI) spectral line is the first species we have implemented into our analysis. The simplicity of the detailed balance governing this two-level hyperfine transition enables the easy calculation of important parameters such as the emissivity and opacity of the line, and its profile function. The relevant physical variables needed to perform these calculations are the density (of HI), temperature and velocity of the gas.

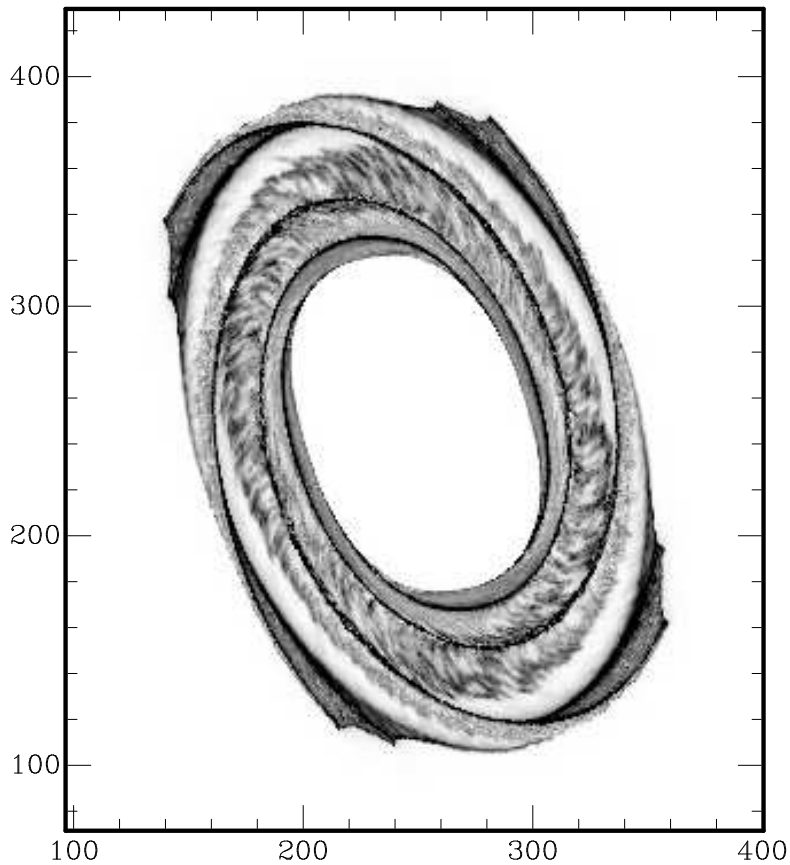
In our work, Torus grids an SPH-simulated spiral galaxy onto an Adaptive Mesh Refinement (AMR) grid, essentially transforming the particle view of the galaxy into a gridded view. The galaxy model we have used comes from a simulation investigating molecular cloud formation in spiral galaxies by [2], based on the Milky Way and containing a full thermodynamical model of the ISM, and a consistent treatment of the formation of molecular hydrogen. Once the galaxy is gridded, the Torus code can manipulate the grid spatially, and perform radiative transfer and ray tracing calculations to infer a synthetic line profile from an arbitrary observer position. Tracing multiple lines of sight can generate an image, or a three-dimensional cube of the selected tracer species in the case of spectral lines, which is directly comparable to real observations.

To simulate extragalactic HI observations of (nearby) spiral galaxies, we can orient the SPH galaxy to arbitrary position and inclination angles, and assign to it some systemic recessional or approach velocity, so that the simulated datacube may be compared directly to typical radioastronomical observational data.

## 3. M33 as a test case

As a demonstration of our ability to produce synthetic spectral datacubes that successfully imitate the observed HI profile, we chose the nearby spiral galaxy M33, primarily because of the availability of high-quality observational data [3] with which our results could be compared. Quantitative differences are to be expected, given the circular rotation of M33 is approximately 100 km/s [4] while the SPH galaxy, modelled to be more akin to the Milky Way, has  $v_{rot} \approx 220$  km/s. Moreover, the interaction of M33 with its surroundings (especially M31) gives rise to extended HI emission well beyond its main disk, and we would therefore not expect even a qualitative match to the SPH galaxy in this component.

In Figure 1 we show a total column density image of the SPH galaxy, oriented to match the disk of M33. Numerically, we can resolve the structure in the SPH galaxy better than the angular



**Figure 1:** Column Density image of the SPH galaxy, oriented to match M33's position and inclination angles. Note that the SPH calculation does not trace gas within 5 kpc of the galaxy's center. The axes reflect the datacube pixel values.

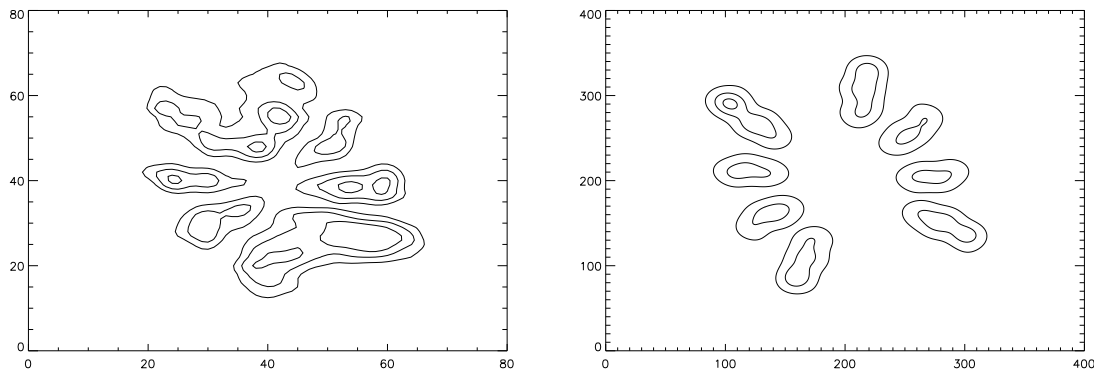
resolution of the M33 data, so we convolve our synthetic datacube with a Gaussian beam to simulate the observations being done by a single-dish telescope.

The qualitative agreement we seek is the basic, expected observation of the galaxy's main disk being traced by a series of isovelocity curves as we step through the cube in radial velocity. We show four such curves as contour plots for the M33 cube in the left panel of figure 2. Our results in the right panel of figure 2 show a good qualitative match to the general rotational structure of M33.

The structure contained in the simulated cube at the native resolution of the simulations hints at the effects of spiral shocks and other noncircular motions contained within the rotating galaxy disk. Very high resolution observations with interferometric radio telescopes, and eventually the SKA, will make such investigations of fine structure in the spiral arms of galaxies routine.

#### 4. Conclusion and Future Directions

We have described a model to transform output from numerical simulations into synthetic



**Figure 2:** Isovelocity contour plots of M33 (left) and the SPH galaxy (right). The four contours are from different channel maps of the HI data cube, with the top contour showing the most blueshifted HI and progressing to the most redshifted HI in the bottom contours. Axes reflect the datacube pixel scales.

HI datacubes, which could be measured by an ‘observer’ inside, or outside a galaxy. For external observers, the case most relevant to this conference, we can produce maps of higher resolution than available with current instruments. Within a galaxy, this process has the advantage that distances to features are known precisely, rather than being subject to large kinematic uncertainties.

As with all situations, this method is only as good as the model. We have begun with an SPH simulation of a spiral galaxy which emulates many of the aspects of the Milky Way. However, important physical processes such as stellar feedback have not yet been implemented, and so certain quantitative matches have not yet been achieved. Nevertheless this line of work may prove valuable to the study of spiral structure in galaxies, especially as instruments leading to the Square Kilometre Array continue to push the limits of angular resolution.

## Acknowledgments

The research leading to these results has received funding from the Seventh Framework Programme under grant agreement n<sup>o</sup> PIIF-GA-2008-221289. KAD wishes to thank the PRA conference organisers for a thoroughly enjoyable and forward-looking experience in Groningen.

## References

- [1] T. J. Harries, *Synthetic line profiles of rotationally distorted hot-star winds*, *MNRAS* **315** (2000) 722
- [2] C. L. Dobbs, S. C. O. Glover, P. C. Clark, & R. S. Klessen, *The ISM in spiral galaxies: can cooling in spiral shocks produce molecular clouds?* *MNRAS* **389** (2008) 1097
- [3] M. E. Putman, J. E. G. Peek, A. Muratov, O. Y. Gnedin, W. Hsu, K. A. Douglas, C. Heiles, S. Stanimirovic, E. J. Korpela, S. J. Gibson *The Disruption and Fuelling of M33*, *ApJ*, (2009), accepted
- [4] E. Corbelli & P. Salucci *The extended rotation curve and the dark matter halo of M33* *MNRAS* **311** (2000) 441