

9-1-2012

NJIT Libraries Annual Report FY2011-2012

NJIT Libraries

Follow this and additional works at: <https://digitalcommons.njit.edu/libraryreports>

Recommended Citation

NJIT Libraries, "NJIT Libraries Annual Report FY2011-2012" (2012). *Library Annual Reports*. 10.
<https://digitalcommons.njit.edu/libraryreports/10>

This Annual Report is brought to you for free and open access by the Special Collections at Digital Commons @ NJIT. It has been accepted for inclusion in Library Annual Reports by an authorized administrator of Digital Commons @ NJIT. For more information, please contact digitalcommons@njit.edu.

**DEAR COLLEAGUES, STUDENTS AND FRIENDS OF
THE NJIT LIBRARIES**



The most important milestone this year was that NJIT completed the decennial Middle States Commission of Higher Education accreditation visit & report successfully.

The library was mentioned twice with positive observations. Whew!

“The Van Houten Library provides not only traditional volumes and study spaces, but also some essential databases and group study/project space. It [plays] a central role in the NJIT Information Literacy effort.” p. 33

This year the library catalog provided our faculty and students with free access to many more ebook titles than in the previous years, but at far less expense to the library. In the past the library had to pre-purchase ebooks (and hard copy books) and display them in our library catalog before we knew whether they would even be used. Now the library, through the new service called patron driven acquisitions (PDA), can pre-populate the online catalog with pre-selected and curriculum-based ebook titles without paying for them in advance. The library rents the book from the vendor only if and when someone eventually clicks and uses it. Since each rental is far less costly than the purchase price, the library may rent it many times before it would be comparable to the purchase price. Heavily used ebooks are still being purchased as needed. While ebooks are not new to the NJIT libraries, the new behind-the-scenes rental process has been far more cost effective, heavily increased ebook usage, and

enabled students and faculty to get remote access to far more titles.

The library also started lending iPads in FY2012 which proved to be popular with both our faculty and students. The LibGuides, started in FY 2011, have proven to be heavily used and a great way to keep our faculty and students informed. We continue to develop innovative services, even in tight fiscal times.

We also had several more staff transitions than in the previous year: Erin Finnerty resigned as the E-Resources & Serials Librarian position at the start of the fall 2011 semester. **Lisa Weissbard**, Cataloging Librarian, assumed the E-Resources & Serials Librarian responsibilities until October 1st when **Haymwantee Singh**, previously Technical Reference Librarian, was hired as the new E-Resources & Serials Librarian. After a national search, **Kate Wiggins** was hired to replace Haymwantee as the new Technical Reference Librarian.

The library again had to cancel some journal titles as the library budget stayed the same while annual journal and database subscriptions increased in price.

The architecture library continues to be popular with our students and faculty and uses its resources very efficiently. The Van Houten Library group study room usage continues to increase as well.

Responding to student requests, the library purchased 25 New Earth Archive books. In addition, the library purchased a Kindle and loaded all 25 books so that any student or faculty member could borrow the Kindle and browse all the books.

As always, I welcome your comments at sweeney@njit.edu.

**RICHARD SWEENEY,
NJIT UNIVERSITY LIBRARIAN**

JUST-IN CASE TO JUST-IN TIME: EBOOK PURCHASES

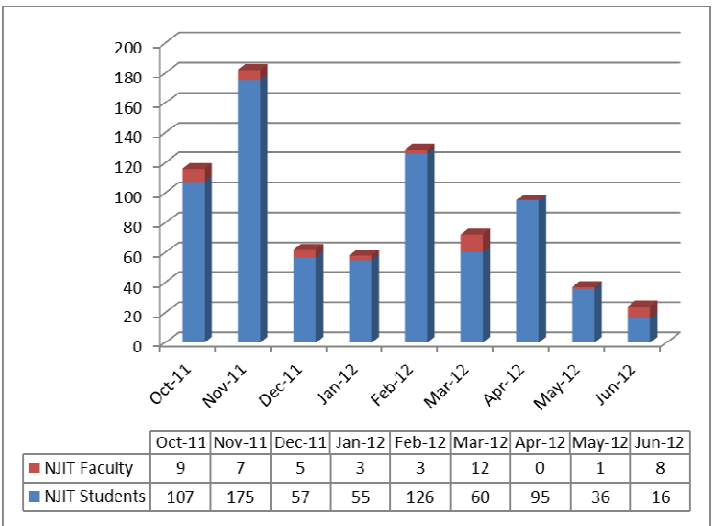
In August 2011 the NJIT libraries began a new pilot project Patron Driven Acquisition for purchasing electronic books. Patron Driven Acquisition (PDA) is a process whereby ebooks are made visible to library patrons via MARC records loaded in the online catalog, but are not purchased until there is sufficient demand via short term loan (STL) and usage of a given title reaches an established threshold. The NJIT libraries have consistently strived to improve service in an increasingly 24/7 online environment by continuing to adopt new methods for providing ubiquitous access to our collections and resources.

With diminishing funds allotted to book purchases, the librarians decided to expand our relationship with EBook Library (EBL) from just in case to just in time purchase in response to increased popularity for electronic books coupled with increased preferences for books in electronic format. The statistics in the chart below confirmed the value of PDA to library patrons as well as librarians. More than half of the titles accessed came from science subject disciplines. The library would have had to spend approximately \$131,000 of our materials budget to purchase 1,419 titles that our library patrons have accessed; instead we spent a total of \$16,921 for both purchases and loans.

eBooks from EBL	FY2010	FY2011	FY2012
Owned	445	550	576
Browsed online	1,948	3,345	2,781
Downloads	280	363	1,769
Read online	159	273	1,463
Total titles loaned	N/A	N/A	1,419
Unique titles accessed	N/A	N/A	926
Total budget spent	\$8,239	\$11,376	\$16,921
Estimated value of titles loaned (\$92.53 / title)			\$131,300
% of titles accessed in Sciences			54%
% of titles accessed in Humanities			36%
% of titles accessed in Architecture & Arts			10%

iPAD LENDING PROGRAM

In October 2011 the Van Houten Library piloted a new service, an iPad Equipment Lending Program for use by NJIT students and faculty. Students can borrow an iPad for a 3-hour in-library use while faculty can borrow it for 24-hours. A quick 30 second user satisfaction survey was asked of the borrowers. The students' response to the new service was overwhelmingly positive. Both graduate and undergraduate students are very satisfied and rank this new service as very important. Users want more iPads with longer borrowing time and be able to check it out as if it was a book.



MOBILE WEBSITE: LIBRARY-ON-THE-GO

In March 2012, LibraryLinkNJ funded the "LibraryLinkNJ Pilot Project: New Jersey Libraries-On-The-Go" project. The aim of the project was "to ensure that member libraries have a mobile presence useful to, and used by, their library patrons." LibraryLinkNJ awarded 23 contracts, with NJIT as a recipient of the subsidized request in the amount of \$5,000, to create and implement a mobile website for the Robert W. Van Houten Library.

With mobile devices, smartphones and tablets becoming increasingly popular, it is important for NJIT library to provide a much greater user experience for

our students, faculty and staff no matter what mobile device they are using. This is the right time to develop a responsive, mobile-friendly website that provides access to key resources and services: access to the library's catalog; access to library subscribed databases; and access to library services including virtual reference, hours, directions and my library account. The mobile website can be accessed at <http://www.libanywhere.com/m/673>.

LIBGUIDES @ NJIT

LibGuides developed by Springshare (renamed ResearchGuides at NJIT) enable NJIT's librarians to quickly develop targeted course-specific guides and subject guides in support of NJIT's information literacy program and course curriculum. Since its inception in August 2010, LibGuides statistics have shown that there were a total of 45,281 accesses to 113 ResearchGuides created by NJIT Librarians. In FY2012 there were a total of 35,454 accesses compared to 9,827 in the FY2011. View <http://researchguides.njit.edu> for additional information.

	ResearchGuides Accessed FY2011	ResearchGuides Accessed FY2012
July	-	559
August	208	894
September	318	9,700
October	395	5,093
November	271	3,358
December	95	2,063
January	3,034	3,668
February	1,639	3,254
March	1,734	2,778
April	695	1,483
May	640	1,409
June	798	1,195
Total	9,827	35,454

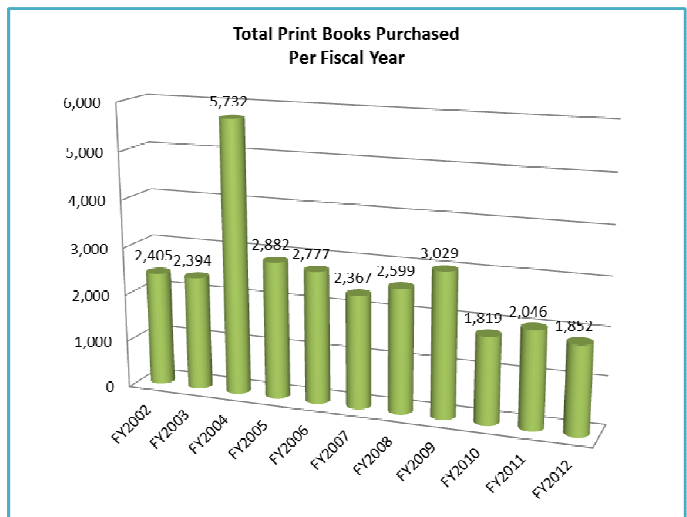
Top 5 ResearchGuides Accessed

FY2012

Using Web Search Engines	1,631
Understanding Citations	3,354
Find a Book in the NJIT Library	3,916
Research Roadmaps	4,105
Using Academic Search Premier	4,376

BOOK PURCHASES

The book expenditures chart compares the total number of books purchased from FY2002 to FY2012. While the overall book budget has remained relatively stable the last several years, book prices continue to increase. The average cost per book in FY2012 is \$90 while it was \$72 in FY11. The staff continues to find creative ways to support the research and teaching needs of our faculty and students.



VALE OPEN LIBRARY SYSTEM INVESTIGATION: FY2012 UPDATE

The NJIT library continued to participate in VALE's investigation of the feasibility for implementing a statewide academic open source library system. The creation of VALE-OLS will benefit the New Jersey academic library community and its

users by putting in place a system that is more flexible and adaptable than the current library systems. The idea is to create an environment where there is no duplication of effort with one integrated library system, a more efficient, centralized management infrastructure and a shared bibliographic database that will create statewide findability and availability of materials – including the potential of a statewide academic borrowing card.

The tasks accomplished by the standing committees working on this project are: The VALID Steering Committee accomplished the following tasks: selected a new name for the project, VALID: Virtual Academic Libraries Information Discovery, designed the VALID logo, recommended against joining Kuali OLE due to budgetary constraint. The VALID Implementation Committee made a recommendation to contract with Amazon EC2 for cloud servers to implement VuFind discovery (DL) tool and continue to test Blacklight, another open source discovery tool. For more information about the VALID project, view <http://www.valenj.org>.



REFERENCE SERVICES

The Van Houten Reference Department, consisting of four full-time reference Librarians, has continued to work on its mission to support the University by working closely with faculty and students in meeting their research, teaching, and learning goals. They do this through reference, instruction, and assessment of information literacy. Technical Reference Librarian, Katherine Wiggins joined the team in January 2012, succeeding Haymwantee Singh who became E-Resources & Serials Librarian.

The Reference Librarians are knowledgeable, user-focused, and passionate about their work. They work well as a team, while each librarian also independently manages relationships with his or her departments in an entrepreneurial way. Their unique position as classroom collaborators and boundary spanners often enables them to bring people and ideas together for enhanced collaboration in research, teaching, and learning. The services the Reference Librarians provide have had, and have the potential to create an even greater impact on the University in the future.

INFORMATION LITERACY

As information literacy has increasingly become a focus of instruction and assessment in higher education, so has it become essential to the work of the Reference Librarians, who have become highly-skilled at engaging faculty and students in instruction and consultations that reinforce this new focus. Reference Librarians collaborate with faculty in curriculum development, preparation of lesson plans, teaching, and assessment.

Our Librarians continued to reach all freshmen through the Research Roadmaps program, now in its fourth year, as well as in many other courses from freshman to senior levels across the curricula. This year the Librarians have moved beyond teaching search and retrieval skills to instructional collaborations that work within the context of many subject disciplines. As part of the ongoing collaboration with ENG352, technical communication, Librarians piloted a new assignment designed to better integrate writing and research.

Efforts to help close some major gaps in the overall assessment process at NJIT culminated in March with a few revisions: 1) the UCRC new course form includes assessment; 2) the program review guidelines were updated; and 3) the assessment and evaluation process for existing courses will not be a UCRC function, but rather that of the Program Review Committee based on the NJIT Institute Information Literacy Plan. This was followed up with a faculty workshop in March in which our Reference Librarians participated. In support of ongoing professional development for faculty, a guide to assessment was added to the Research Guides on the library website (<http://researchguides.njit.edu/faculty>). Reference consultations and information literacy instruction are moving from in-person to the predominately digital environment. Librarians have continually updated tutorials and Research Guides to provide user instruction and assistance.

LIBRARY SELF HELP ANSWER SERVICE BY INTELLIRESPONSE

The library self-help answer service is a natural language, web-based self-service software system that automatically answers questions submitted concerning library services. This service is accessible from the library homepage. See: "Ask the Library" at <http://library.njit.edu>

	FY2010	FY 2011	FY 2012
Total questions asked	10,248	11,272	10,702
Response rate	84.33%	86.25%	74.6%
Average question per day	28	31	29
Most common question asked	How do I find a book?	What databases does the library subscribe to ?	How do I find articles on my topic?

CIRCULATION SERVICES



Circulation Services continue to evolve as we transition from book focused transactions to greater emphasis on electronic resources and continued concentration on efficient delivery of services to library

users. One of the frequent comments from students is the wish for more group study space. Though budget and space restrictions limit the possibility of additional study rooms, towards that goal we were able to add two additional study tables in a quiet space on the second floor. The space was previously used for photocopy machines.

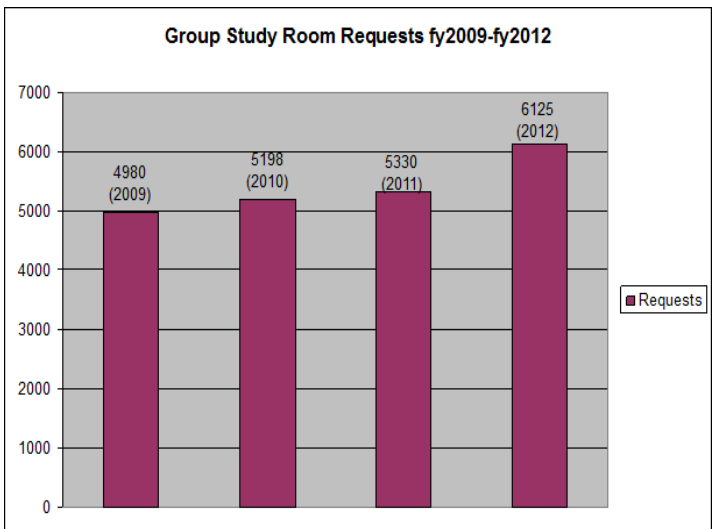
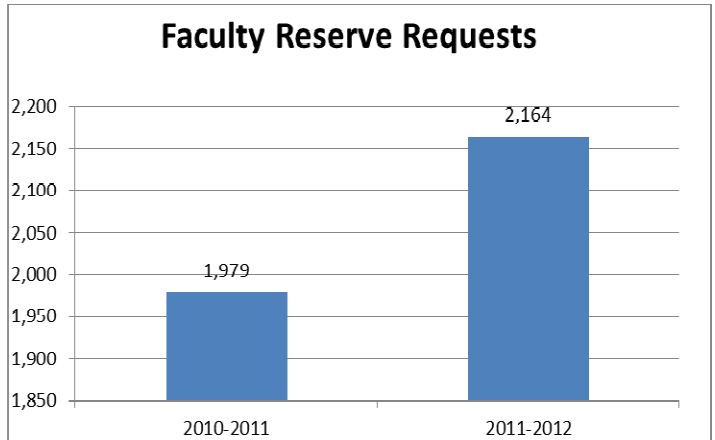


Students have eagerly welcomed iPads as a use-in-library option. iPads can be signed out from the circulation desk. Demand for other services available from the circulation desk has increased: Group study room requests have again increased to 6,125



requests for FY2012, as compared to 5,330 requests last year. Additionally, requests for faculty reserve items obtained at the circulation desk increased to

2,164 requests this year, as compared to 1,979 last year.



We have developed guides to make library material easier to find. Circulation staff has focused on accurate shelving and speedy re-shelving of circulated books, as well as quick re-shelving of books and journals used in-house. Our colorful brochure displaying a quick and easy-to-follow guide to the library circulating collection continues to be an invaluable tool for guiding students to quickly locating the material they need. This fall, the circulation staff will be adding large subject signs attached to the book stacks for easier subject location. A new bookmark will be distributed with basic information students need: hours, website, and borrowing policies.

THE NEW EARTH ARCHIVE



The New Earth Archive (<http://neweartharchive.org>) is an online resource created by NJIT students led by Anthony Sorgi. The website lists “powerful and influential books on topics like climate change, biology, sociology, economics, politics, psychology, philosophy, and many, many other areas...that have the power to inspire college readers to change the world.” This project was further enhanced by the library’s purchase of a Kindle available to students and containing 25 of the recommended books. The library also purchased these books in hard copy format to make available to the students.



NJIT wrote a feature article on Sorgi and the New Earth Archive <http://www.njit.edu/features/>

RAPIDILL: 24 HOUR ARTICLE DELIVERY / INTERLIBRARY LOAN

The Library’s popular Rapid Interlibrary Loan article delivery service continues to provide quick delivery of requested journal articles to the desktop of our students and faculty. For fy2011-fy2012 the library obtained a total of 1,559 articles and books as requested by library patrons. Of that total, 994 articles were delivered within 24 hours via the Rapid Interlibrary Loan system, an increase of 114 quick deliveries over the total of 880 RapidILL articles filled last year.

Fiscal Year Comparison	FY2011	FY2012
RapidILL articles borrowed per requests from NJIT faculty, students, & staff	880	994
Traditional Interlibrary loan articles borrowed for NJIT faculty, students, & staff	252	151
Books borrowed for NJIT faculty, students, & staff	457	414
Total Interlibrary loan items requested & supplied to NJIT faculty, students, & staff	1,589	1,559

ELECTRONIC THESES AND DISSERTATIONS (ETD)

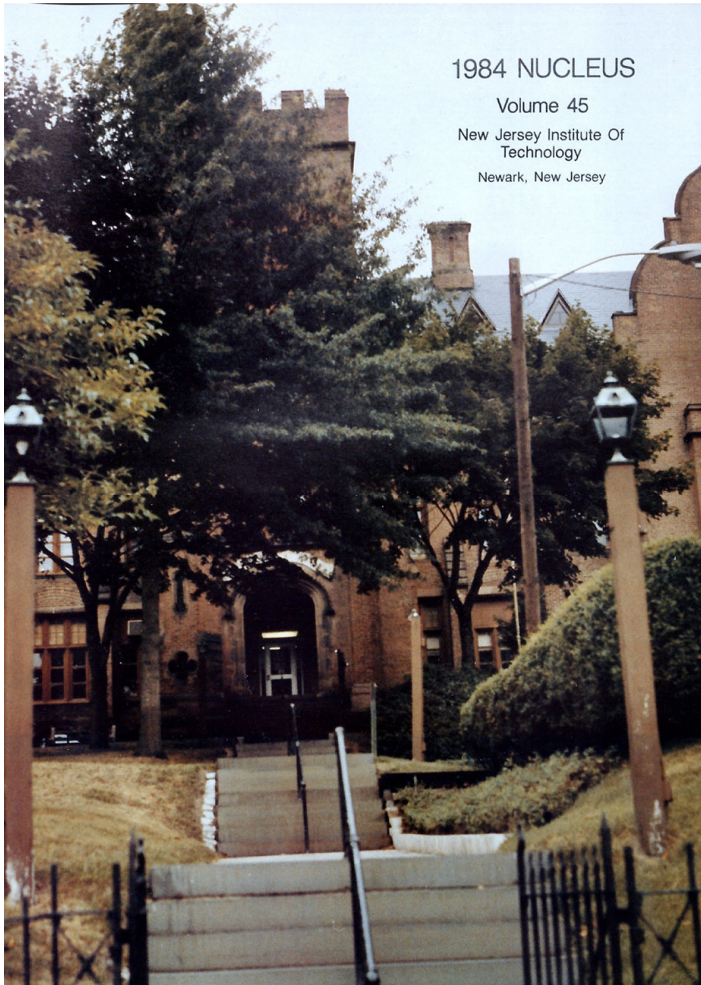
There are 1,767 theses and dissertations available in electronic format as ETD's (Electronic Theses & Dissertations). From July 2011 to June 2012, 206 ETDs went live on the NJIT website. Researchers, students, and business people from around the world continue to find hits to our ETDs through Google and Yahoo searches and then get immediate access to full-text content through our NJIT ETD portal.

View NJIT’s ETD’s at <http://library.njit.edu/etd>. The breakdown of ETDs online in the last year is as follows:

Reason	FY2011	FY2012
Current T&D	104	195
ILL Request	3	5
Retrospective	4	0
Web Request	5	6
Requestor Type	FY2011	FY2012
NJIT Student	3	0
NJIT Alumni	0	2
NJIT Faculty	0	1
Non-NJIT Faculty	0	1
Non-NJIT Staff	3	6
Other	2	1

ARCHIVES / YEARBOOKS

This year the library digitized the 1984 yearbook and added it to the digital archive at <http://library1.njit.edu/archives/yearbooks/>

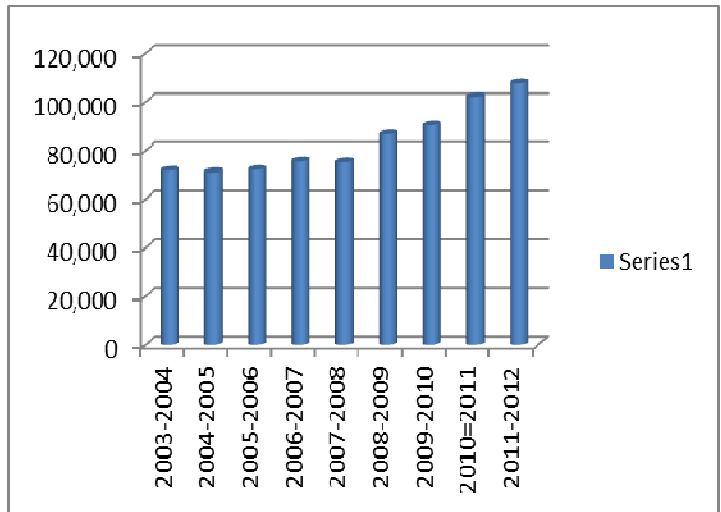


**BARBARA AND LEONARD LITTMAN
ARCHITECTURE LIBRARY**

Academic libraries are being increasingly regarded by faculty as partners in teaching and research. In his article *“Still Here”* that has been recently published in the *Metropolis* magazine Mark Lamster, a writer on art and culture, observed that “the library became more popular than ever”. Jim Neal, vice president for information services and university librarian at Co-

lumbia University, echoing this sentiment explained that more people come to the library to study, “... to work together... to consult with experts, with librarians”. This trend reveals some changes in the way libraries are being used.

ARCHITECTURE LIBRARY USER VISITS/YEAR



Our statistics demonstrate that in the Littman Library the number of visits over the last ten years more than doubled. In 2011-2012 we had 107,662 visits, a 5% increase since the previous year. At the same time book circulation declined by 10%. Perhaps, it can be explained not only by the fact that more resources are available remotely but also by students’ preference to do their research while in the library using their laptops and iPads. Students read books without checking them out and therefore their usage is not being accounted for. However, in 2011-2012 still more than 50% of all university library transactions occurred in the areas related to the College of Architecture and Design (CoAD) curriculum. This suggests that information resources critical to their fields of study continue to be typically available in print format. This fact has been confirmed by the analysis of ebooks in the field of architecture, art and design available via EBL. We still have to keep a balance between print and digital worlds and to embrace those technological advances that can enhance services while preserving beneficial assets of the past.



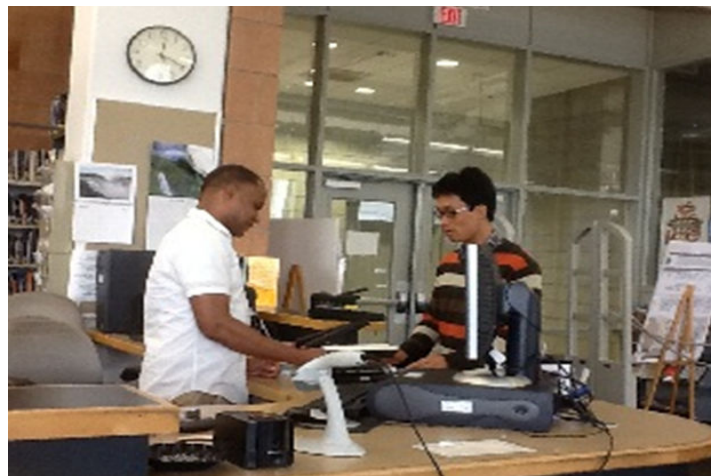
Despite the fact that in FY2012 the library's material budget did not see an increase concurrent with the rapidly growing prices of scholarly resources, we continued to strive to develop collections sufficient in diversity to ensure that our acquisitions meet the college priorities.

We supplemented our funds with donations from students and faculty, although the total number of acquired books has declined. We were able to maintain all our subscriptions to periodicals and databases, and identified Open Access peer-reviewed journals in the field of art and architecture that are freely available on the web. Over the last few years the Littman Library has been increasingly involved in teaching information literacy. In 2011-2012 we focused on implementation of an information literacy program adapted by NJIT and on design of instructional materials specific for students in design disciplines. We taught seventy eight instruction sessions, both general and course specific. To accommodate different styles of learning, we offered a combination of individual sessions and group instruction, traditional handouts, and web-based guides. In 2011-2012

we posted on the library website ten Research Guides and nine video tutorials, which are being actively used.

To improve access to materials available online we installed in the library a large screen which can be connected to a laptop or an iPad. Using this screen during instruction sessions we can introduce students simultaneously to both print and online resources and also to get them more engaged in instruction activities. It is also being used by faculty and students for group meetings, collaborative work, presentations, and video screening.

We continued to develop the Image Database and since last year added more than 2,000 digital images. The Digital Archive of Newark Architecture (<http://archlib.njit.edu/collections/dana>) currently contains more than fifty web pages, several hundred images and documents, as well as numerous links to online resources. It has been accessed 1,594 times over the last 10 months not only by CoAD faculty and students but also by architects and researchers interested in the history of Newark's built environment.



The Littman Library maintains its presence on Facebook and Twitter. Using Web 2.0 technology helps not only to inform current patrons on news in the library and in the field of architecture, art and design but also to keep in touch with college alumni.

We strive to accommodate our patrons' various needs to make our library more user-centered. We agree with the author of the article "The Academic Library Impact on Student Persistence" who believes that "a welcoming, inclusive environment leads to student persistence" and will promote their success and retention.



LIBRARY STATISTICS

Circulation	FY2007	FY2008	FY2009	FY2010	FY2011	FY2012
Van Houten Library: Hours open in a typical week	107.50	107.50	107.50	94.50	94.50	94.50
Van Houten Library: User visits to the Library	425,209	405,231	402,375	384,985	380,479	379,564
Littman Architecture Library: Hours open in a typical week	72.00	72.00	72.00	72.00	72.00	72.00
Littman Architecture Library: User Visits to the Library	77,450	75,147	80,082	90,265	102,032	107,662
Circulation: Van Houten & Littman Architecture Libraries	40,553	37,777	33,440	41,665	33,752	27,963
Materials borrowed from other libraries	1,691	1,688	1,832	2,096	1,589	1,559
Materials on loan to other libraries	981	918	1,463	2,459	*2,562	2,593
Print volumes held	215,939	220,618	223,998	227,813	* 170,186	171,792

*revised

LIBRARY STATISTICS

Journals	FY2007	FY2008	FY2009	FY2010	FY2011	FY2012
Journal titles purchased in online databases	21,703	31,656	33,273	32,107	34,355	35,822
Journal titles accessible (not purchased)	15,448	20,170	19,443	25,259	33,547	33,565
Total individual journal subscriptions	507	507	402	375	356	259
Individual print only journals	161	161	126	76	76	76
Individual e-journals only	240	240	184	259	245	169
Both print & e-journals	68	68	55	40	35	14
Online bibliographic indexes	7		4	4	4	5
Online full text databases	20	21	19	19	19	19

STAFF PROFESSIONAL AND PERSONAL ACTIVITIES

Richard T. Sweeney, University Librarian

Rich was the keynote presenter and led a Millennial focus group for the Ellucian (formerly SunGard and Datatel) Annual CIO Conference in Orlando, Florida, in June, 2012. He also gave a presentation and conducted a Millennial focus group for the Higher Education Committee of the New York State Society of Certified Public Accountants in April in New York City. Rich also presented with Darius Solohub, Director of School of Architecture, at the Association of Collegiate Schools of Architecture in Boston in March. He continued to serve as a member of the VALE Executive Committee and as the liaison to the VALE website committee. Rich also gave a presentation in January to the VALE Users Conference with Greg Fallon from Passaic County College on Adaptive Learning Systems: an academic library role?



Ann Hoang, Assistant University Librarian

Ann received a \$5,000 grant from LibraryLinkNJ Mobile Pilot Project: New Jersey Libraries-On-The-Go to develop an NJIT mobile website. She continued to serve as a member of several VALE and LibraryLinkNJ Committees:



- VALE Open Library System Steering Committee;
- VALE Open Library System Implementation Taskforce;
- VALE Users' Conference Planning Committee;
- VALE Website Committee and continues to play an integral role in administering the Drupal-powered VALE website;
- LibraryLinkNJ Website Advisory Task Force .

STAFF PROFESSIONAL AND PERSONAL ACTIVITIES

Ann Hoang, continued

Presentations and Workshops:

- March 2012, attended Computers in Libraries Conference, Washington DC.
- February 2012, attended “7 Habits of Highly Effective People for Managers”, American Management Association (AMA).
- February 2012, attended “Using Drupal to Build Library Websites”, ALA Editions eLearning Workshop.
- January 2012, presented “VALE Open Source ILS Project: System Demo”, VALE Users’ Conference.

Davida Scharf

Director of Reference

Davida was on educational leave from April through August, focusing on her doctoral work. She participated in the VALE Shared Information Literacy Committee <http://www.valenj.org/committees/shared-information-literacy> and the VALE Values Group <http://valevalue.wikispaces.com>.



Doreen Mettle

Director of Circulation and Interlibrary Loan

Doreen presented a poster session on RapidILL with Judy Gardner of Rutgers at the 2012 VALE Annual Conference in January 2012.

Doreen attended the American Library Association Annual Conference and the Rapid Interlibrary Loan System Annual User Group Meeting in Anaheim, California in June 2012.



Doreen is also a member of the VALE Resource Sharing Committee. This committee identifies, recommends, and implements policies and practices that enhance resource sharing among academic libraries in New Jersey using VALE and NJ statewide technical infrastructures.

Maya Gervits

Director, Architecture Library



Maya Gervits participated in the VALE conference (January 2012, Busch Campus Center, Rutgers University, in Piscataway, NJ) and gave a talk “Innovations in Library Instruction Focusing on Students in Architecture and Visual Arts” (co-presented with Susan O’Connor). Maya designed an online information portal “Career Guidance for Architectural Librarians” which she presented at the Association of Architectural School Librarians (AASL) annual conference in Boston (March 2012).

She continued to be involved in design of research guides for the AASL Career Guidance Task Force and on International Resources in Architecture. She attended conference “Digital World of Art History” at Princeton University which discussed recent digital initiatives in art and architecture and best practices in the field.

Maya co-authored an article “Evolving Libraries: People and Technology Building University Design Communities” which is to be published in the October 2012 issue of “Art Documentation”.

She served on the Association of Architectural School Librarians (AASL) Career Guidance Task Force and maintained membership in the Association of Architectural School Librarians (AASL), Art Library Society of North America (ARLIS), Association of Historian of Nineteenth Century Art (AHNCA), and Society of Architectural Historians (SAH).



Bruce Slutsky
Technical Reference Librarian

Bruce served on the Reference Services Committee. Chaired a subcommittee to recommend features for the next generation catalog, the VALE Open Library System Project known as VALID. Bruce also served on the panel: "VALE Open Source ILS Project Collaboration: Benefits and Challenges" at the VALE annual meeting, January 2012. Bruce is a member of the American Chemical Society, Chemical Information Division, New York Local Section. Bruce is a Career Consultant, advising chemists in making a career transition to chemical information or science librarianship. For the 12th year Bruce was a convener of the METRO Science and Medical Librarians Special Interest Group. Bruce also attended several webinars and seminars offered by METRO including: "Digital Preservation", "Project Management", and "Letting go of legacy services".



Haymwantee Singh
E-Resources and Serials Librarian

Haymwantee has served as a member of the VALE Cooperative Collection Management Committee, the VALE Electronic Resources Committee and American Society for Engineering Education. She also attended the Serials Solutions User Group Meeting at Temple University, June 14, 2012.



Heather Dalal
Information Literacy Librarian

Heather Dalal and Lynee Richel (County College of Morris) presented "*Writing Performance Objectives & Developing Assessment for Instruction Librarians*" Sponsored by the VALE Shared Information Literacy Committee and held at NJIT on May 10, 2012.



Lisa Weissbard
Cataloging Librarian

Lisa is a member of ALA and NJLA. She is on the VALE Bibliographic Control and Metadata Committee and on its VALID subcommittee. In May 2012 she participated in the Ex Libris Technical Seminar and ELUNA conference in Salt Lake City.



Matthew Brown
Digital Projects Librarian

Matt continued to serve as a member of the NJLA CUS/ACRL-NJ Technology Committee.



Susan O'Connor
Architecture Library Specialist

Susan presented at the 2012 VALE Users' Conference with Maya Gervits on "Innovations in Library Instruction Focusing on Students in Architecture and Visual Arts".



Katherine A. Wiggins
Technical Reference Librarian

Kate joined NJIT in January 2012. She assisted the Ass't University Librarian in writing a grant application which was awarded to the library for the creation of our mobile website; organized IEEE day at NJIT, providing library users with hands-on training of the IEEE Xplore database; helped judge the CS/IS Capstone midterm presentations and has been working on implementing the chat reference software. She attended METRO NY's New Librarians' Meeting in February and the American Library Association's Conference in Anaheim, CA, in June 2012.

FOR YOUR INFORMATION

Van Houten Library Website

<http://library.njit.edu>

Littman Architecture Library Website

<http://archlib.njit.edu>

Hours—Van Houten Library

<http://library.njit.edu/hours>

Hours—Littman Architecture Library

<http://archlib.njit.edu/aboutus/hours/>

Ask A Librarian

<http://library.njit.edu/researchhelpdesk/askus.php>

Course Reserves

<http://librarius.njit.edu/vwebv/enterCourseReserve.do>

Annual Reports

<http://library.njit.edu/staff/admin/annual-reports/>