

7-31-2019

Plasticity in the Human Gut Microbiome Defies Evolutionary Constraints

Andres Gomez
University of Minnesota


Ashok Kumar Sharma
University of Minnesota

Elizabeth K. Mallott
Northwestern University

Klara J. Petrzalkova
Centre of the Czech Academy of Sciences

Follow this and additional works at: https://digitalscholarship.unlv.edu/anthro_fac_articles

Carolyn A. Jost Robinson

 Part of the [Bacteria Commons](#), [Ecology and Evolutionary Biology Commons](#), and the [Gastroenterology Commons](#)

~~See next page for additional authors~~

Repository Citation

Gomez, A., Sharma, A. K., Mallott, E. K., Petrzalkova, K. J., Jost Robinson, C. A., Yeoman, C. J., Carbonero, F., Pafco, B., Rothman, J. M., Ulanov, A., Vickova, K., Amato, K. R., Schnorr, S. L., Dominy, N. J., Modry, D., Todd, A., Torralba, M., Nelson, K. E., Burns, M. B., Blekhman, R., Remis, M., Stumpf, R. M., Wilson, B. A., Gaskins, H. R., Garber, P. A., White, B. A., Leigh, S. R. (2019). Plasticity in the Human Gut Microbiome Defies Evolutionary Constraints. *mSphere*, 4(4), 1-14. American Society for Microbiology.
<http://dx.doi.org/10.1128/mSphere.00271-19>




This Article is protected by copyright and/or related rights. It has been brought to you by Digital Scholarship@UNLV with permission from the rights-holder(s). You are free to use this Article in any way that is permitted by the copyright and related rights legislation that applies to your use. For other uses you need to obtain permission from the rights-holder(s) directly, unless additional rights are indicated by a Creative Commons license in the record and/or on the work itself.

This Article has been accepted for inclusion in Anthropology Faculty Publications by an authorized administrator of Digital Scholarship@UNLV. For more information, please contact digitalscholarship@unlv.edu.

Authors

Andres Gomez, Ashok Kumar Sharma, Elizabeth K. Mallott, Klara J. Petzelkova, Carolyn A. Jost Robinson, Carl J. Yeoman, Franck Carbonero, Barbora Pafco, Jessica M. Rothman, Alexander Ulanov, Klara Vickova, Katherine R. Amato, Stephanie L. Schnorr, Nathaniel J. Dominy, David Modry, Angelique Todd, Manolito Torralba, Karen E. Nelson, Michael B. Burns, Ran Blekhman, Melissa Remis, Rebecca M. Stumpf, Brenda A. Wilson, H. Rex Gaskins, Paul A. Garber, Bryan A. White, and Steven R. Leigh

Plasticity in the Human Gut Microbiome Defies Evolutionary Constraints

 Andres Gomez,^a Ashok Kumar Sharma,^a  Elizabeth K. Mallott,^b Klara J. Petzelkova,^{c,d,e} Carolyn A. Jost Robinson,^f Carl J. Yeoman,^g Franck Carbonero,^h Barbora Pafco,^{c,i} Jessica M. Rothman,^j Alexander Ulanov,^k Klara Vlckova,^{c,i*} Katherine R. Amato,^b  Stephanie L. Schnorr,^{l,y} Nathaniel J. Dominy,^m David Modry,^{d,i,n} Angeliqe Todd,^o Manolito Torralba,^p Karen E. Nelson,^p Michael B. Burns,^q Ran Blekhman,^r Melissa Remis,^s Rebecca M. Stumpf,^{t,u} Brenda A. Wilson,^{t,v} H. Rex Gaskins,^{t,w} Paul A. Garber,^u Bryan A. White,^{t,w} Steven R. Leigh^x

^aDepartment of Animal Science, University of Minnesota, Twin Cities, St. Paul, Minnesota, USA

^bDepartment of Anthropology, Northwestern University, Evanston, Illinois, USA

^cInstitute of Vertebrate Biology, The Czech Academy of Sciences, Brno, Czech Republic

^dInstitute of Parasitology, Biology Centre of the Czech Academy of Sciences, Ceske Budejovice, Czech Republic

^eLiberec Zoo, Liberec, Czech Republic

^fDepartment of Anthropology, University of North Carolina, Wilmington, North Carolina, USA

^gDepartment of Animal and Range Sciences, Montana State University, Bozeman, Montana, USA

^hDepartment of Nutrition & Exercise Physiology, Elson S. Floyd College of Medicine, Washington State University, Spokane, Washington, USA

ⁱDepartment of Pathology and Parasitology, Faculty of Veterinary Medicine, University of Veterinary and Pharmaceutical Sciences Brno, Brno, Czech Republic

^jDepartment of Anthropology, Hunter College of CUNY and New York Consortium in Evolutionary Primatology (NYCEP), New York, New York, USA

^kMetabolomics Center, Roy J. Carver Biotechnology Center, University of Illinois at Urbana-Champaign, Champaign, Illinois, USA

^lDepartment of Anthropology, University of Nevada, Las Vegas, Nevada, USA

^mDepartment of Anthropology, Dartmouth College, Hanover, New Hampshire, USA

ⁿCentral European Institute for Technology (CEITEC), University of Veterinary and Pharmaceutical Sciences Brno, Brno, Czech Republic

^oWorld Wildlife Fund, Dzanga-Sangha Protected Areas, Bayanga, Central African Republic

^pJ. Craig Venter Institute, La Jolla, California, USA

^qDepartment of Biology, Loyola University Chicago, Chicago, Illinois, USA

^rDepartment of Genetics, Cell Biology, and Development, University of Minnesota, Twin Cities, Minneapolis, Minnesota, USA

^sDepartment of Anthropology, Purdue University, West Lafayette, Indiana, USA

^tCarl Woese Institute for Genomic Biology, University of Illinois at Urbana-Champaign, Champaign, Illinois, USA

^uDepartment of Anthropology, University of Illinois at Urbana-Champaign, Champaign, Illinois, USA

^vDepartment of Microbiology, University of Illinois at Urbana-Champaign, Champaign, Illinois, USA

^wDepartment of Animal Sciences, University of Illinois at Urbana-Champaign, Champaign, Illinois, USA

^xDepartment of Anthropology, University of Colorado, Boulder, Colorado, USA

^yKonrad Lorenz Institute for Evolution and Cognition Research, Klosterneuburg, Austria

ABSTRACT The gut microbiome of primates, including humans, is reported to closely follow host evolutionary history, with gut microbiome composition being specific to the genetic background of its primate host. However, the comparative models used to date have mainly included a limited set of closely related primates. To further understand the forces that shape the primate gut microbiome, with reference to human populations, we expanded the comparative analysis of variation among gut microbiome compositions and their primate hosts, including 9 different primate species and 4 human groups characterized by a diverse set of subsistence patterns ($n = 448$ samples). The results show that the taxonomic composition of the human gut microbiome, at the genus level, exhibits increased compositional plasticity. Specifically, we show unexpected similarities between African Old World mon-

Citation Gomez A, Sharma AK, Mallott EK, Petzelkova KJ, Jost Robinson CA, Yeoman CJ, Carbonero F, Pafco B, Rothman JM, Ulanov A, Vlckova K, Amato KR, Schnorr SL, Dominy NJ, Modry D, Todd A, Torralba M, Nelson KE, Burns MB, Blekhman R, Remis M, Stumpf RM, Wilson BA, Gaskins HR, Garber PA, White BA, Leigh SR. 2019. Plasticity in the human gut microbiome defies evolutionary constraints. *mSphere* 4: e00271-19. <https://doi.org/10.1128/mSphere.00271-19>.


Editor Katherine McMahon, University of Wisconsin-Madison

Copyright © 2019 Gomez et al. This is an open-access article distributed under the terms of the [Creative Commons Attribution 4.0 International license](https://creativecommons.org/licenses/by/4.0/).

Address correspondence to Andres Gomez, gomez@umn.edu.

* Present address: Klara Vlckova, School of Microbiology and APC Microbiome Ireland, University College Cork, Cork, Ireland.

A.G. and A.K.S. contributed equally to this work.

 @lab_gomez Our new paper "Plasticity in the human gut microbiome defies evolutionary constraints" shows that the human microbiome can be baboon-like! #primates #primatemicrobes #gutmicrobiome @blekhman @VEDASCI

Received 13 April 2019

Accepted 1 July 2019

Published 31 July 2019

keys that rely on eclectic foraging and human populations engaging in nonindustrial subsistence patterns; these similarities transcend host phylogenetic constraints. Thus, instead of following evolutionary trends that would make their microbiomes more similar to that of conspecifics or more phylogenetically similar apes, gut microbiome composition in humans from nonindustrial populations resembles that of generalist cercopithecine monkeys. We also document that wild cercopithecine monkeys with eclectic diets and humans following nonindustrial subsistence patterns harbor high gut microbiome diversity that is not only higher than that seen in humans engaging in industrialized lifestyles but also higher compared to wild primates that typically consume fiber-rich diets.

IMPORTANCE The results of this study indicate a discordance between gut microbiome composition and evolutionary history in primates, calling into question previous notions about host genetic control of the primate gut microbiome. Microbiome similarities between humans consuming nonindustrialized diets and monkeys characterized by subsisting on eclectic, omnivorous diets also raise questions about the ecological and nutritional drivers shaping the human gut microbiome. Moreover, a more detailed understanding of the factors associated with gut microbiome plasticity in primates offers a framework to understand why humans following industrialized lifestyles have deviated from states thought to reflect human evolutionary history. The results also provide perspectives for developing therapeutic dietary manipulations that can reset configurations of the gut microbiome to potentially improve human health.

KEYWORDS evolution, microbiome, primate

Identifying the factors that drive the composition and function of the human gut microbiome has been the subject of extensive research in the microbiome field. Comparative models have explored the gut microbiome of human populations across diverse subsistence gradients (1–4). These models have also established evolutionary parallels between humans and nonhuman primates (5, 6), providing valuable insights for understanding the intersections between host genetics, diet, and lifestyle in shaping the human microbiome.

Although it remains generally assumed that phylogenetic conservatism likely associated with host physiology outweighs diet in determining primate gut microbiomes (6–8), it has also been shown that subsistence strategies and diet are major drivers of the gut microbiome of humans (9–12) and nonhuman primates (13–15). However, the existing comparative models have considered only humans under different subsistence strategies (4), closely related primate species consuming similar diets in the wild (16), or primates consuming controlled diets in captivity (17).

In an effort to better define the factors shaping the current taxonomic composition of the human gut microbiome, we used an expanded comparative model across a phylogenetically and ecologically diverse set of primate species, including great apes, Old World monkeys, New World monkeys, and human populations with markedly different subsistence patterns. We hypothesize that the human gut microbiome is plastic, and that it deviates from the phylogenetic conservatism proposed before (6). In reflecting this plasticity, we propose that the gut microbiome of humans following traditional subsistence practices (hunter-gathering and traditional agriculture) share taxonomic and diversity signatures with distantly related nonhuman primates.

RESULTS

A total of 392 fecal samples of anthropoid primates were collected in different locations across Africa, Central America, and Mexico, including African great apes (mountain gorillas [$n = 48$], western lowland gorillas [$n = 191$], and Central African chimpanzees [$n = 10$]), Old World monkeys (olive baboons [$n = 4$], geladas [$n = 7$], agile mangabeys [$n = 10$], and vervets [$n = 23$]), as well as New World monkeys (black howlers [$n = 33$] and captive tufted capuchins [$n = 4$]). Our human samples are derived

from multiple groups, including hunter-gatherers (The BaAka, $n = 28$) and traditional agriculturalists (The Bantu, $n = 29$) from the Dzanga Sangha Protected Areas, Central African Republic, and western researchers working at the same field site for 3 to 6 months ($n = 5$) (see Table S1 in the supplemental material for details). DNA was extracted from each sample, and the V1-V3 hypervariable region of the 16S rRNA bacterial gene was sequenced to determine bacterial community composition across all primate groups. 16S rRNA sequences generated from fecal samples of U.S. participants ($n = 56$) of the Human Microbiome Project (termed U.S.-HMP) (18, 19) were added to the comparative analyses. Sequence data were processed and collapsed according to bacterial genus presence and abundance across all samples.

Phylogenetically distant primates share similar gut microbiomes. A Bray-Curtis distance ordination analysis (principal coordinate analysis [PCoA] of genus-level relative abundance tables) revealed significant stratification of the fecal microbiome of each primate species ($R^2 = 0.49$ and $P < 0.001$ according to permutational multivariate analyses of variance [PERMANOVAs]) (Fig. 1a). Species-specific arrangement of primate gut microbiomes has been observed previously (6) and was replicated here based on diverse distance metrics, including UniFrac (Fig. S1a to c). Nonetheless, our data also revealed significant stratification of the human gut microbiome depending on either geographical origin or subsistence strategy. For example, the gut microbiomes of U.S.-HMP subjects deviated significantly from those of all other primates, including all other human groups. In contrast, the gut microbiome composition of hunter-gatherers and traditional agriculturalists clustered closely in distance with those of all other nonhuman primates, specifically with those of vervets, mangabeys, and baboons. This distance overlap can be seen in Fig. 1b and c, where the dotted box indicates no significant difference in median distance ordination scores along principal coordinates one and two (PCo1 and PCo2), between the groups following traditional subsistence practices, and the vervet, mangabey, and baboon monkeys ($P > 0.05$ by Wilcoxon rank sum test).

These nonhuman primates are African monkeys of the subfamily *Cercopithecinae*, whose molecular divergence from the superfamily *Hominoidea* (apes and humans) is estimated at 23 million years ago (20). The results showed that hunter-gatherers and traditional agriculturalists shared more microbiome compositional features with African cercopithecinines than they did with U.S. humans and even with more phylogenetically related primates, such as gorillas or chimpanzees, whose divergence from humans occurred from 6 to 9 million years ago. Moreover, the gut microbiome of western researchers (from the Czech Republic, the United Kingdom, and the United States) working in the Dzanga Sangha Protected areas of the Central African Republic, who transitioned to the lifestyles and diets of the traditional agriculturalists during their stay in the field from 3 to 6 months, showed microbiome trends similar to those seen in these traditional populations. The close similarities in gut microbiome composition between humans following traditional subsistence practices and the cercopithecinine monkeys are seen not only in multivariate space, along two principal coordinates (Fig. 1 and Fig. S1), but also in terms of unweighted UniFrac distances (Fig. S2a to d).

To validate these grouping patterns, an unsupervised cluster analysis was performed (partitioning around medoids, or PAM, clustering). Average silhouette width indicated efficient stratification of the microbiome composition of the primate groups studied, dividing them into two main clusters (Fig. S3a). These clusters strongly reflect dissimilarity between U.S. subjects and all other nonhuman primates and humans (Fig. S3b). However, upon closer inspection and using a different PAM feature (total within sums of squares or classification error), better classification accuracy was detected when the data were divided into three clusters (Fig. 2a) and corroborated grouping of samples based on the similarity dynamics identified previously (Fig. 1 and 2b). For example, all U.S.-HMP subjects constituted a separate cluster, along with all captive capuchins; this group was designated cluster three. The vast majority of mountain and lowland gorillas ($> \sim 90\%$) clustered together with most geladas ($> \sim 75\%$) and were designated cluster

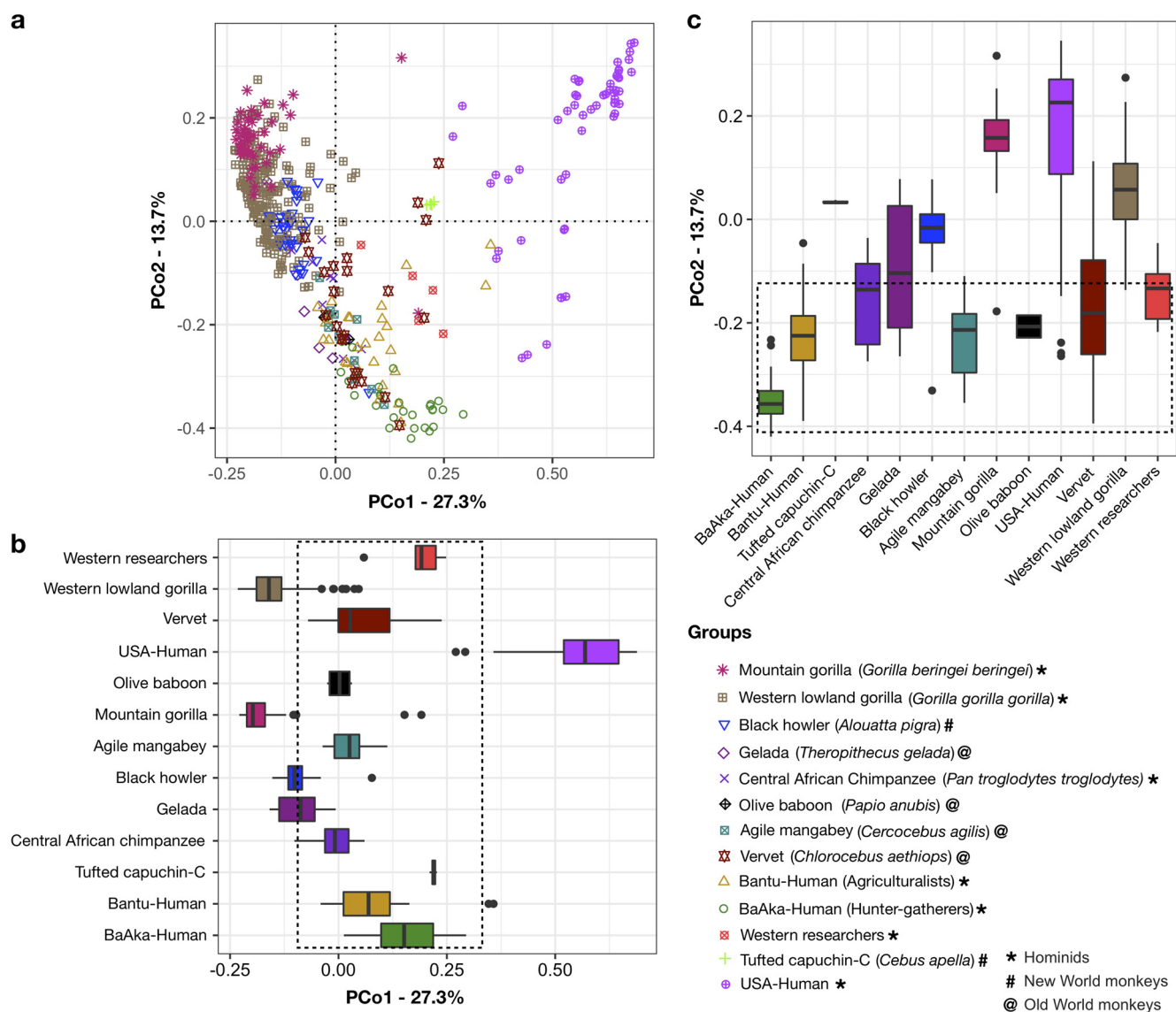


FIG 1 Gut bacterial community composition differs across multiple primate species. (a) Bray-Curtis-based principal coordinate analysis showing different bacterial community composition in fecal samples of all primate species analyzed ($R^2 = 0.49$ and $P < 0.001$ by PERMANOVAs). Each symbol represents the fecal microbiome composition, at the genus level, of a different primate species. (b and c) Boxplots showing ordination scores of each sample along PCo1 (b) and PCo2 (c). The dotted boxes are drawn to enclose groups where the medians are not statistically different in ordination scores ($P > 0.05$) according to Kruskal-Wallis multiple comparisons. Western researchers, subjects working in the Dzanga Sangha Protected Areas, Central African Republic; capuchin-C, captive tufted capuchins; USA-Human, U.S. subjects, part of the Human Microbiome Project. The bottom right corner shows colored symbols for every species in the PCoA ordination in panel a, in ascending order according to median scores along PCo1.

two. Most human hunter-gatherers and traditional agriculturalists ($> \sim 90\%$) and all western researchers clustered with all baboons, mangabeys, vervets, and chimpanzees ($> \sim 90\%$) and most howler monkeys ($> \sim 80\%$) and were grouped into cluster one (Fig. 2c). Cluster membership was corroborated through a randomForest classification procedure (area under the curve of 0.986, out-of-bag estimate of error rate of 6.03%; cluster one, 11%; cluster two, 3%; cluster three, 3%).

This cluster assortment of gut microbiome composition in the primates analyzed does not correspond with the pattern of primate phylogeny. Although this may be an obvious observation, to show this mismatch, we generated an unrooted 16S rRNA-Bray-Curtis distance tree based on average genus abundances in the gut microbiome of the primate groups analyzed and contrasted it with a tree generated with representative host mitochondrial DNA (mtDNA) sequences available in databases (Fig. S4).

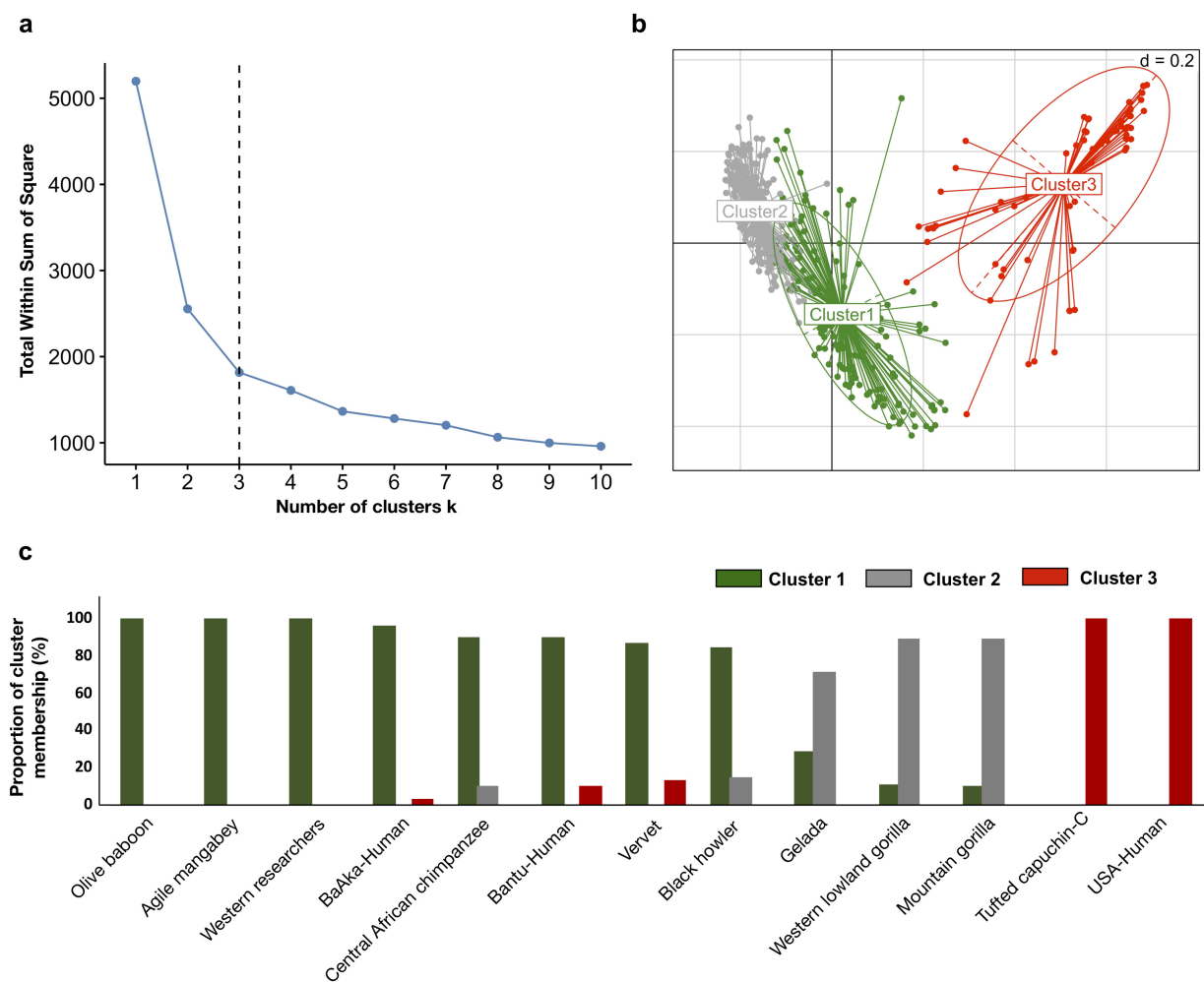


FIG 2 Gut bacterial communities of different primate species are classified into three different clusters. (a) Partition around medoids (PAM) clustering analysis shows that total within sums of squares (classification error) diminishes significantly when considering three clusters, with no significant further error reductions. (b) Bray-Curtis PCoA ordination showing the presence of three clusters classifying gut bacterial community composition across different primate species. Ellipses show confidence intervals (95% standard errors) in multivariate space, and each dot represents the fecal sample of a given primate. (c) Bar plots showing the proportion of individuals within each primate species classified into each of the three clusters detected.

This analysis clearly shows that the topology of the two trees, 16S rRNA and mtDNA based, is discordant.

Taxonomic and diversity convergence in the gut microbiome of phylogenetically distant primates. We used a combination of randomForest analyses and its mean decrease accuracy index (>9), along with species indicator analysis (indicator value of >0.5 , $P < 0.05$), and Kruskal-Wallis test (multiple comparisons, $q < 0.05$) (Table S2) to identify the most representative genera of each cluster. The abundance of each cluster-specific bacterial genus was combined to show cumulative taxonomic signatures shaping each cluster. For instance, cluster one was primarily dominated by abundances of *Prevotella*, followed by *Coprococcus*, *Clostridium*, *Faecalibacterium*, *Lachnospira*, RF32, and unclassified *Victivallaceae* (Fig. 3a). Members of cluster two were mainly characterized by showing high abundance of unknown bacteria, followed by unknown *Coriobacteriaceae*, SDH 231, unknown *Sphaerochaeta*, *Treponema*, RFN20, p75a5, *Buleidia*, *Butyrivibrio*, *Mogibacterium*, *Aldercreutzia*, F16, and *Fibrobacter* (Fig. 3b). Finally, *Streptococcus*, *Parabacteroides*, *Bacteroides*, and *Sutterella* mainly distinguished members of cluster three (Fig. 3c).

We next explored alpha diversity in the context of cluster membership. Most members of cluster one, particularly baboons, mangabeys, traditional agriculturalists,

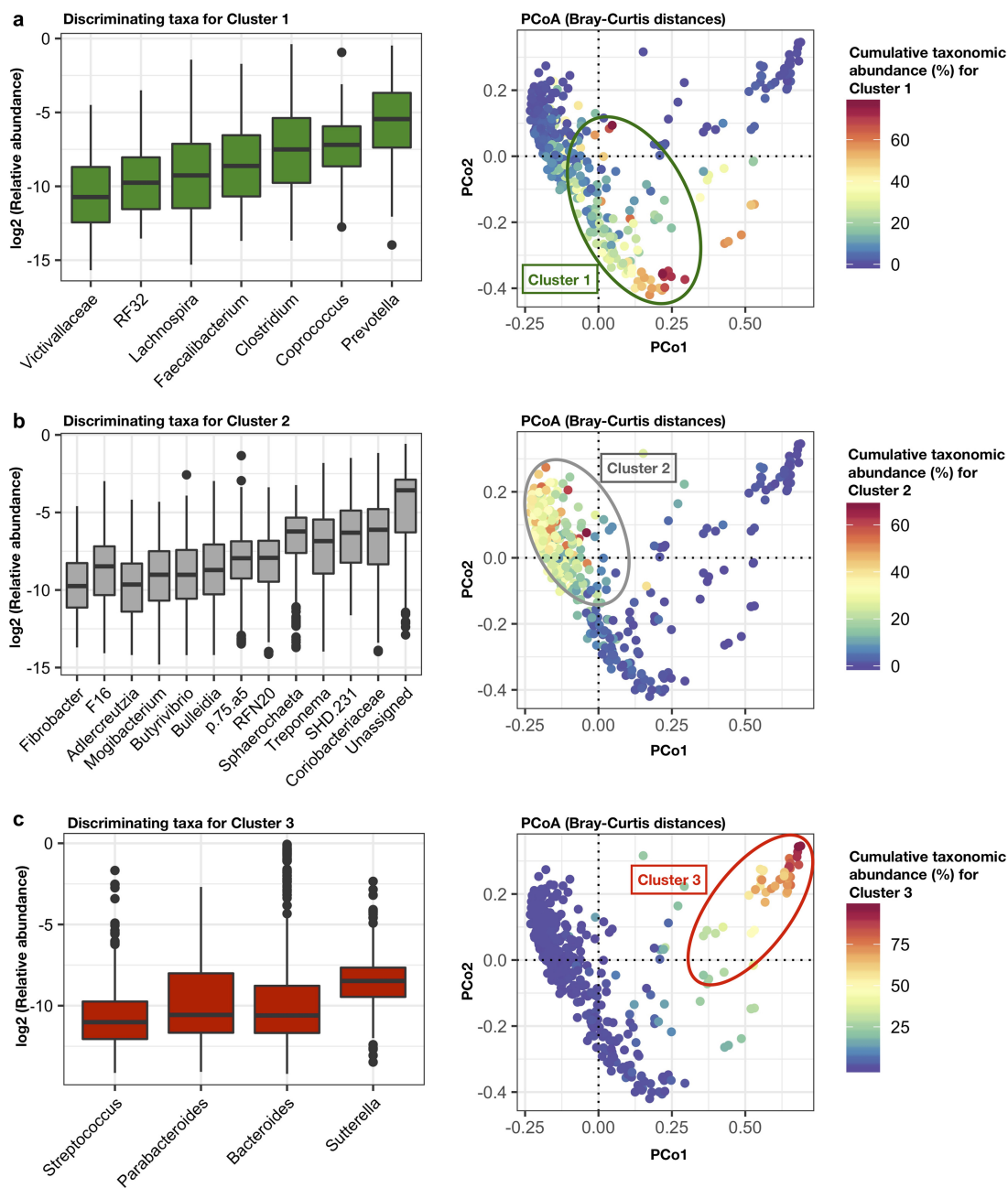


FIG 3 Specific gut bacterial taxonomic signatures characterize cluster membership across different primate species. (a to c, left) Boxplot showing the relative abundance (log transformed) of differentially abundant genera detected in each cluster (Random-Forest mean decreased accuracy of >9 ; indicator value, >0.5 ; $P < 0.05$; Kruskal-Wallis tests, $q < 0.05$). (a to c, right) Bray-Curtis distance PCoA ordination colored by the cumulative relative abundance of taxonomic signatures shaping each cluster.

and hunter-gatherers, showed the greatest number of observed taxonomic units in their fecal microbiomes. They were followed by members of cluster two, the highly folivorous/herbivorous mountain and lowland gorillas, which exhibited significantly lower numbers of observed taxa ($P < 0.05$) (Fig. 4a). Black howler monkeys, which emphasize a seasonally leaf-based diet balanced with some fruits (21), had numbers of observed taxa similar to those seen in the two gorilla species despite being mostly assigned to cluster one. Likewise, geladas, mostly assigned to cluster two, showed parity with the human groups following traditional lifestyles (agriculturalists and hunter-gatherers) (Fig. 4a). These alpha diversity results were replicated using other metrics, such as Chao1 and Shannon index, and both with rarefied and unrarefied data

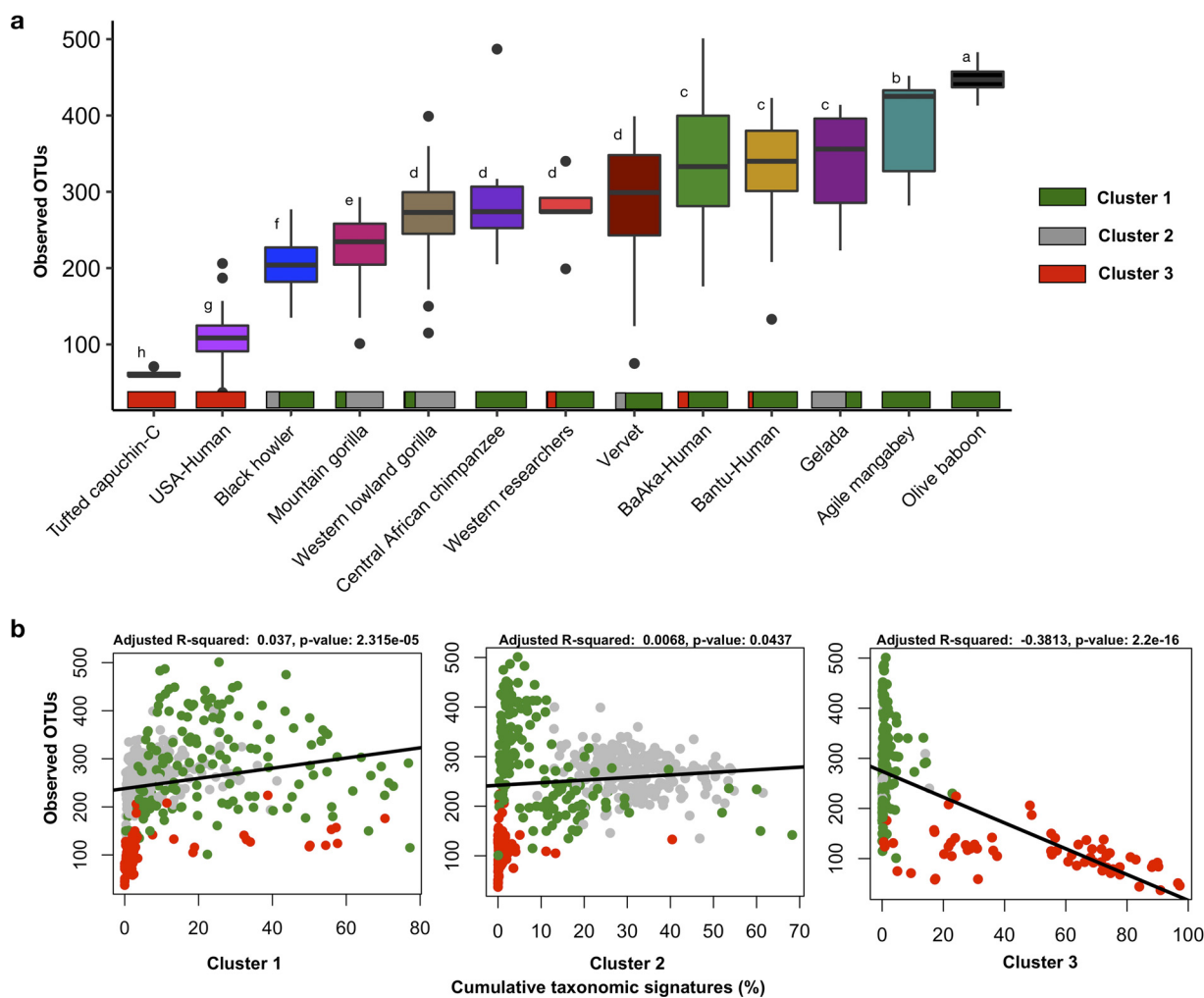


FIG 4 Number of observed taxonomic units in the gut microbiome of different primate species is dependent on cluster membership. (a) Boxplots showing number of observed OTUs in the fecal microbiome of different primate species according to cluster membership. Different letters denote significant differences according to FDR-adjusted Kruskal-Wallis tests. Number of observed OTUs was normalized (rarefied) at 1,000 reads per sample. (b) The number of observed OTUs in the fecal microbiome of different primate species is correlated with the abundance of cumulative taxonomic signatures characterizing each cluster.

(Fig. S5a to f). U.S.-HMP subjects and captive capuchins, all members of cluster three, showed the lowest taxonomic richness in their gut microbiomes (Fig. 4a).

As a way to understand factors related to increased and decreased microbiome diversity among members of clusters one and two, respectively, we explored the hypothesis that the unique richness patterns observed within each primate cluster are correlated with the abundance of cluster-specific taxonomic features. As such, we analyzed the linear relationship between the number of observed taxa and the abundance of cumulative taxonomic signatures characterizing each cluster. For instance, the cumulative abundance of *Prevotella*, and other cluster one-specific genera, was concordant with an increase in microbiome richness ($R^2 = 0.03$, $P = 2.31e-05$) (Fig. 4b, left). The cumulative abundance of genera characterizing cluster 3 (*Streptococcus*, *Parabacteroides*, *Bacteroides*, and *Sutterella*) was negatively correlated with the number of taxonomic units observed among members of this cluster ($R^2 = -0.38$, $P = 2.2e-16$) (Fig. 4b, right). In contrast, there was only a weak relationship between the cumulative abundance of taxa characterizing cluster two, mainly composed of *Gorilla* spp., and the observed number of taxa seen among members of this group ($R^2 = 0.006$, $P = 0.043$) (Fig. 4b, center). These analyses indicate that the abundance of taxa characterizing primates in cluster one could be associated with a gut environment conducive to

increased diversity, contrary to the possible impact that cluster three-specific taxa could have.

DISCUSSION

The results of our analyses highlight a level of microbiome plasticity in the human gut microbiome that challenges a paradigm of host phylogenetic constraints, as the primary driver of gut microbiome composition among primates (6). Instead, it is likely that gut microbial communities across different human populations and other primates are stimulated by diet, to the point phylogenetic signals are overridden across genetically distant primates sharing generalist or omnivorous dietary behaviors. As such, the simplified typology that assumes that host selective pressures shape the primate gut microbiome is not demonstrated in the data presented.

Although host phylogenetic constraints on the gut microbiome of primates have been documented to the extent of overriding dietary drivers (7), the expanded comparative approach utilized here shows significant gut microbiome overlap between humans and phylogenetically distant wild primates. Specifically, given the more traditional subsistence strategies associated with hunting and gathering or traditional agriculture, the data show that human gut microbiomes converge, to a large extent, with those of certain species of Old World monkeys from the *Cercopithecidae* family rather than with the phylogenetically closer African apes. Thus, given the wide molecular divergence between hominoids and cercopithecines, these data support an ecological model rather than evolutionary convergence on primate gut microbiomes.

Ecological similarities between cercopithecines and human populations under traditional lifestyles. Old World monkeys such as mangabeys, baboons, and vervets, which showed the greatest overlap with the gut microbiome of the BaAka hunter-gatherers and Bantu traditional agriculturists, maintain a more diverse and eclectic diet than the relatively more specialized diet of wild great apes, who concentrate on ripe fruit or highly nutritional vegetation when seasonally available (22–24). In contrast, the diets of olive baboons, mangabeys, and vervets is comprised of a remarkable range of fruits, seeds, flowers, shrubs, herbaceous plants, tubers, tree gums, grasses, sedge corms, insects, eggs, and even small vertebrates (25). Increased dietary diversity in these primates serves to broaden a more complex nutritional profile than that of sympatric primates, such as gorillas or chimpanzees. Hence, it is likely that gut microbiome adaptations to dietary complexity allow cercopithecines to exploit foraging resources with wide variation in sugars, fiber, protein, lipids, minerals, and secondary compounds, being less selective in their dietary choices and relying on a great variety of nutrient fractions, even within a single category of foods (e.g., different fruits and fruit parts) (22, 23).

Along these lines, the microbiome convergence reported here is particularly surprising, given that cooking among all human groups should, theoretically, dampen or even negate among-group microbiome differences. However, beyond cooking, dietary and nutritional variety is also a defining subsistence trait in nonindustrialized human populations, especially in contemporary hunter-gatherers (3, 4). For instance, BaAka hunter-gatherers rely on a wide variety of foods in their diet, including fruits, nuts, mushrooms, grains, leaves, wild game, insects, fish, and both wild and cultivated tubers (26). Although the Bantu agriculturalists rely to a greater degree on a market-based subsistence strategy, they still exhibit considerable overlap in dietary behaviors with the BaAka communities, particularly in their reliance on tubers. This trait is reflected in the gut microbiome of both groups, unlike that of subjects from industrialized societies (1). Thus, the high microbiome similarity observed between nonindustrial human populations and certain Old World monkeys may reflect similar reliance on a wide variety of wild food items with similarly complex nutritional profiles. Among these dietary components, starches, hexoses, cellulose, hemicellulose, and pectic compounds, all characteristics of wild primate diets, may have a role in driving these similar microbiome traits (27). However, the specific dietary behaviors and nutritional fractions driving this convergence remain unclear.

Common microbiome signatures in cercopithecines and human populations under traditional subsistence patterns. Some of the genera that characterized microbiome convergence between humans following traditional lifestyles and cercopithecines (Fig. 3a) (e.g., *Coprococcus*, *Clostridium*, *Faecalibacterium*, and *Lachnospira*) are typically associated with the dietary inclusion of fermentable fibers, principally in the form of starch and pectin-rich substrates (28, 29). As such, reliance on starchy fruits, legumes, seeds, grains, and tubers, all sources of starch (30), may be common drivers of the cercopithecine-human microbiome convergence reported here. However, the impact of other diverse dietary substrates, such as fats, proteins, minerals, vitamins, and phenolics, also should be considered in explaining this convergence (31).

It should be noted that one of the most distinctive taxonomic characteristics detected among members of the cluster primarily composed of nonindustrialized humans and the cercopithecines is the abundance of *Prevotella*, which has been consistently associated with nonwestern, small-scale rural and hunter-gatherer populations in Africa, South America, Asia, and the South Pacific (1, 2, 10, 32–34). *Prevotella* has also been reported to define an enterotype of western subjects consuming plant-based diets (35). However, we and others have also reported that, in nonhuman primates (apes and Old World monkeys), abundances of *Prevotella* increase when there is consumption of more digestible carbohydrate sources, during high-fruit seasons (13), in captivity (15), or in controlled experiments that evaluate the effect of western diets on their gut microbiome (36). Also, we report that abundances of *Prevotella* are lowest not only among U.S. humans and captive capuchins (cluster three) but also among primates consuming highly fibrous diets (*Gorilla* spp. in cluster two). Moreover, the group of western researchers temporarily switching to a traditional lifestyle in the field still showed abundances of *Prevotella* that are comparable to those seen in cercopithecine monkeys (see Fig. S6 in the supplemental material).

Thus, abundances of *Prevotella* in humans and nonhuman primates may not correspond to consumption of hard-to-digest complex fibers, like those characterizing leaves or herbaceous vegetation, but with consumption of more fermentable, still complex carbohydrates and other chemically diverse substrates. In human populations under traditional subsistence lifestyles, both wild and cultivated tubers, legumes, maize, nuts, and grains are important staple foods and sources of fermentable starches (34, 37, 38). Thus, investigating the specific drivers of the abundance of *Prevotella* in the gut microbiome of distant primate species (humans and cercopithecines) requires a comprehensive nutritional analysis of common foods in tandem with detailed dietary assessments and functional microbiome surveys.

An important finding of this study was the observation that the greatest microbiome diversity links certain Old World monkeys and human populations practicing traditional subsistence, relative to primates that rely on diets with the highest content of complex fibers (e.g., gorillas). Although dietary fiber deprivation has been recognized as a critical factor triggering depletion of diversity in the human gut microbiome (39, 40), not all fibers are nutritionally or digestively equal, and not all dietary substrates that escape digestion in the proximal gut can stimulate microbial expansion in the distal gut. Hence, based on these results, it may be necessary to reconsider the set of factors that generate enriched diversity of gut microbiomes in populations following nonindustrialized lifestyles, in contrast to humans consuming western diets or folivorous primates. For example, microbial diversity may also be associated with substrates that are easily accessible by gut microbes in the distal gut, such as starches and other soluble fibers, rather than with the consumption of lignified, complex polysaccharides (39). Likewise, these results show that the presence of traditional microbes, largely absent from western humans and captive capuchins, is associated with increased diversity (Fig. 4d), a phenomenon possibly linked to increased substrate availability and critical cross-feeding reactions integrated in metabolic networks (41, 42) and facilitated by taxa such as *Prevotella*.

Implications for understanding the human gut microbiome. These results have implications for understanding the evolution of the human microbiome and its current configurations in the context of industrialized lifestyles, health, and disease. For example, traditional populations have been proposed as a model to understand human evolution in light of optimal health traits (43–45). As such, identifying the nutritional components of their diets and those of wild cercopithecines may help us determine whether more diverse fermentable polysaccharides leads to microbiome configurations that are different from those seen in western populations.

The results presented here also open the question of a possible discordance between humans and their gut microbiomes, especially for populations following industrialized subsistence strategies. Such (evolutionary) discordance has been proposed for human diets, where departures from traditional subsistence patterns and the adoption of modern diets are hypothesized to have rendered human genomes less adapted to rapid dietary changes along with industrialization (43, 46). This genome-diet mismatch hypothesis proposes that our digestive systems are maladapted to certain characteristics of industrialized diets, such as foods with high glycemic loads and high levels of processed fatty acids, altered macro- and micronutrient profiles, and lower fiber content. These dietary characteristics are believed to be associated with the high incidence of chronic diseases observed in western societies (e.g., diabetes, cardiovascular disease, and cancer, among others).

Thus, an important goal lies in determining the extent to which our second genome, the gut microbiome, has also been associated with this mismatch, along with departures from traditional subsistence and following industrialization. This association has been demonstrated recently, showing that human populations under traditional lifestyles experience significant alterations in their gut microbiomes and health after adopting a westernized lifestyle (32). Furthermore, whether such microbiome discordance can be reversed is unclear. In this regard, while it has recently been shown that immersion of 5 urban subjects in traditional lifestyles and diets of rainforest villagers for 16 days did not modify their microbiomes (47), we show that 5 western researchers switching to traditional lifestyles in the field, from 3 to 6 months, acquired microbiome configurations similar to those of the traditional populations they lived with, deviating significantly from the microbiomes of U.S. subjects (HMP).

Thus, the plasticity of the human microbiome presented here, in the context of degree and time of exposure to nonindustrialized lifestyles, raises questions about the potential of dietary manipulations that can reset the microbiome in populations under westernized subsistence patterns. However, given the long-term exposure of the human microbiome to industrialized diets since the agricultural and industrial revolutions, it is unclear whether strategies to reset or change gut microbiome configurations in industrialized populations should only include dietary manipulations or both dietary and environmental microbial exposures. This issue makes the premise of microbiome-based therapeutic strategies to improve human health more challenging.

Conclusions. In summary, the expanded comparative approach presented here indicates that subsistence patterns, such as those exhibited by contemporary hunter-gatherers or traditional agriculturalists, are associated with gut microbiome composition and diversity characterizing distantly related primates that exploit a broad-based diet. Although we largely rely on data collected by our group (except for the HMP data set), limitations related to sample sizes in the cercopithecine groups analyzed, and lack of specific diet composition and feeding behavioral data, warrant careful consideration of these results. We encourage future analyses to strengthen and validate the presented results and the use of functional approaches to uncover gene-centric and strain-level gut microbiome similarities among larger cohorts of cercopithecines and different human populations.

Characterizing host-microbe interactions at the functional level in the gut of human populations, and nonhuman primates with various degrees of subsistence, also should provide the foundation to further understand a potential discordance between human

genomes, their gut microbiomes, and diets, in the context of westernized lifestyles and modern human diseases. More importantly, the specific drivers of the human-cercopithecine microbiome convergence reported here remain unknown and should be studied rigorously. Specifically, the nutritional fractions triggering the gut microbiome convergence between these distantly related primates need to be identified. This strategy may help in developing potential applications of traditional dietary interventions to improve human health through modulating the gut microbiome.

MATERIALS AND METHODS

Subjects and samples. Samples from western lowland gorillas (*Gorilla gorilla gorilla*, $n = 191$), Central African chimpanzees (*Pan troglodytes troglodytes*, $n = 10$), agile mangabeys (*Cercocebus agilis*, $n = 10$), BaAka hunter-gatherers ($n = 28$), Bantu agriculturalists ($n = 29$), and western researchers ($n = 5$) were collected at the Dzanga Sangha Protected Areas, Central African Republic, as described in Gomez et al. (1, 13). Samples from mountain gorillas (*Gorilla beringei beringei*, $n = 48$) were collected at Bwindi Impenetrable National Park, Uganda, also as described in Gomez et al. (13). Samples from vervets (*Chlorocebus aethiops*, $n = 23$) were collected at the island of St. Kitts as described in Amato et al. (36), and samples from black howlers (*Alouatta pigra*, $n = 33$) were collected at Palenque National Park, Mexico, as described in Amato et al. (48). Samples from olive baboons (*Papio anubis*, $n = 4$) were collected at Awash National Park, Ethiopia, samples from geladas (*Theropithecus gelada*, $n = 7$) at Guassa Plateau, Ethiopia, and samples from captive tufted capuchins (*Cebus apella*, $n = 4$) at the National Institutes of Health. Briefly, all samples were collected in RNAlater (2 volumes of solution \times 1 g of fecal sample) for a maximum of 1 month in the field before storage at -80 or -20°C until processing, except samples from tufted capuchins, which were frozen at -80°C right after collection. 16S rRNA sequences of U.S. subjects ($n = 56$), part of the Human Microbiome Project (HMP) (18, 19), were downloaded from <https://hmpdacc.org/>.

16S rRNA gene analyses. All sequences used in this study were generated using the same 16S rRNA variable region, the same sequencing platform, and the same DNA extraction kit. After extraction of genomic DNA using the Power Soil DNA extraction kit of MoBio (Carlsbad, CA), the 16S rRNA gene was sequenced targeting the V1-V3 variable region. PCR (25 cycles of 94°C for 30 s, 50°C for 30 s, and 72°C for 45 s) used barcoded primers (27F, 5'-AGAGTTTGATYMTGGCTCAG-3'; 534R, 5'-ATTACCGCGGCTGCTGG-3') on the Genome Sequencer FLX with GS FLX Titanium series at the J. Craig Venter Institute (Rockville, MD) as described previously (1, 48). The analyses of 16S rRNA sequence data were conducted using custom-made Perl scripts and the QIIME pipeline (v1.9) (49). Briefly, Perl scripts were used to locate primer sequences (27f and 535r), separate forward and reverse reads, reverse complement the reverse reads, and remove duplicates, keeping reads from 200 nucleotides (nt) to a maximum of 535 nt and a maximum number of homopolymers of 6. Processed sequences were used to pick operational taxonomic units (OTUs) based on an open-reference approach with a threshold of 97% identity to the Greengenes database (v13_8). However, most analyses, except for alpha diversity determinations, were conducted at the genus level after collapsing reads at different taxonomic levels using the `summarize_taxa.py` function in QIIME.

Statistical analyses. All microbial community ecology analyses were performed within the R statistical interface (50). Briefly, all ordination analyses (principal coordinate analysis) and distance matrices (Bray, UniFrac, and Canberra) were performed using the R phyloseq package (51). Alpha diversity estimates, permutational multivariate analyses of variance (PERMANOVA), and partitioning around medoids (PAM clustering) were calculated using the R vegan package (52). RandomForest classification (500 trees) as implemented in the randomForest R package (53) was used to corroborate cluster membership. The mean decrease in abundance index (>9) of randomForest in combination with false discovery rate (FDR)-adjusted Kruskal-Wallis multiple comparisons ($q < 0.05$) and species indicator analysis (indicator values, >0.5 ; $P < 0.05$), as implemented in the labdsv R package (54), were used to detect taxa differentially abundant in each cluster. An unrooted tree based on 16S rRNA Bray-Curtis distances was performed using average genus abundances for each primate group and the `hclust` function within the R ape package (55). An unrooted phylogenetic tree based on mtDNA sequences was also generated from representative data downloaded from <https://www.ncbi.nlm.nih.gov/genomes/GenomesGroup.cgi?opt=organelle&taxid=2759>, using ClustalW-based multiple-sequence alignments and plotted with the `ggtree` package in R (56, 57). All graphs were made using the `ggplots` R package (58).

Data availability. The accession numbers for 16S rRNA sequence data are the following: data for the BaAka and Bantu peoples are deposited in project MG-RAST under 16608 (1); sequence data from western lowland and mountain gorillas are deposited in project MG-RAST under mgp6321 and mgp13961 (13); data from vervets and agile mangabeys are in the NCBI Sequence Read Archive (SRA) under SRP065516 (36). Data from howlers (48), baboons, geladas, capuchins, chimpanzees, and western researchers working in the Dzanga Sangha Protected Areas, Central African Republic African field site, are deposited in MG-RAST under mgp89894.

SUPPLEMENTAL MATERIAL

Supplemental material for this article may be found at <https://doi.org/10.1128/mSphere.00271-19>.

FIG S1, TIFF file, 1.9 MB.

FIG S2, TIF file, 0.7 MB.

FIG S3, TIF file, 0.8 MB.

FIG S4, TIFF file, 1.9 MB.

FIG S5, TIFF file, 7.7 MB.

FIG S6, TIFF file, 2.3 MB.

TABLE S1, DOCX file, 0.1 MB.

TABLE S2, DOCX file, 0.02 MB.

ACKNOWLEDGMENTS

We thank the government of the Central African Republic and the World Wildlife Fund for granting permission to conduct our research; the Ministre de l'Education Nationale, de l'Alphabetisation, de l'Enseignement Superieur et de la Recherche for providing research permits; and the Primate Habituation Program for providing logistical support in the field. Finally, yet importantly, we thank all of the trackers and assistants in Dzanga Sangha Protected Areas, Central African Republic.

This publication derives from the HPI-Lab (Laboratory for Infectious Diseases Common to Humans and [non-Human] Primates, Czech Republic), and it was cofinanced by the European Social Fund and state budget of the Czech Republic (project OPVK CZ.1.07/2.3.00/20.0300) and the U.S. National Science Foundation, grant 0935347. This work was partially supported by the Czech-American Scientific cooperation, project number (LH15175), funded by the Ministry of Education, Youth and Sports of The Czech Republic. Uganda Wildlife Authority granted permission for J.M.R. to collect mountain gorilla samples, and Hunter College provided funding. A.G. was supported with funds from the University of Minnesota's Agricultural Research, Education, Extension and Technology Transfer Program (AGRETT; NIFA project number MN-16-122).

A.G. thanks Matt Horowitz, Lyle Kendrick, Thomas Morton, Mike Lopez, Erik Whitesone, and Jerry Ricciotti for useful discussions that inspired ideas to develop the manuscript. A.G. thanks Bolito and Lolo, his most important primates. This work was performed, in part, using computational resources at the Minnesota Supercomputing Institute.

REFERENCES

- Gomez A, Petzelkova KJ, Burns MB, Yeoman CJ, Amato KR, Vlckova K, Modry D, Todd A, Jost Robinson CA, Remis MJ, Torralba MG, Morton E, Umaña JD, Carbonero F, Gaskins HR, Nelson KE, Wilson BA, Stumpf RM, White BA, Leigh SR, Blekhan R. 2016. Gut microbiome of coexisting BaAka pygmies and Bantu reflects gradients of traditional subsistence patterns. *Cell Rep* 14:2142–2153. <https://doi.org/10.1016/j.celrep.2016.02.013>.
- Obregon-Tito AJ, Tito RY, Metcalf J, Sankaranarayanan K, Clemente JC, Ursell LK, Zech Xu Z, Van Treuren W, Knight R, Gaffney PM, Spicer P, Lawson P, Marin-Reyes L, Trujillo-Villarreal O, Foster M, Guija-Poma E, Troncoso-Corzo L, Warinner C, Ozga AT, Lewis CM. 2015. Subsistence strategies in traditional societies distinguish gut microbiomes. *Nat Commun* 6:6505. <https://doi.org/10.1038/ncomms7505>.
- Schnorr SL, Candela M, Rampelli S, Centanni M, Consolandi C, Basaglia G, Turrioni S, Biagi E, Peano C, Severgnini M, Fiori J, Gotti R, De Bellis G, Luiselli D, Brigidi P, Mabulla A, Marlowe F, Henry AG, Crittenden AN. 2014. Gut microbiome of the Hadza hunter-gatherers. *Nat Commun* 5:3654. <https://doi.org/10.1038/ncomms4654>.
- Smits SA, Leach J, Sonnenburg ED, Gonzalez CG, Lichtman JS, Reid G, Knight R, Manjurano A, Chagalucha J, Elias JE, Dominguez-Bello MG, Sonnenburg JL. 2017. Seasonal cycling in the gut microbiome of the Hadza hunter-gatherers of Tanzania. *Science* 357:802–806. <https://doi.org/10.1126/science.aan4834>.
- Moeller AH, Li Y, Mpoudi Ngole E, Ahuka-Mundeye S, Lonsdorf EV, Pusey AE, Peeters M, Hahn BH, Ochman H. 2014. Rapid changes in the gut microbiome during human evolution. *Proc Natl Acad Sci U S A* 111: 16431–16435. <https://doi.org/10.1073/pnas.1419136111>.
- Ochman H, Worobey M, Kuo C-H, Ndjanga J-B, Peeters M, Hahn BH, Hugenholtz P. 2010. Evolutionary relationships of wild hominids recapitulated by gut microbial communities. *PLoS Biol* 8:e1000546. <https://doi.org/10.1371/journal.pbio.1000546>.
- Amato KR, Sanders JG, Song SJ, Nute M, Metcalf JL, Thompson LR, Morton JT, Amir A, McKenzie VJ, Humphrey G, Gogul G, Gaffney J, Baden AL, Britton GAO, Cuzzo FP, Di Fiore A, Dominy NJ, Goldberg TL, Gomez A, Kowalewski MM, Lewis RJ, Link A, Sauter ML, Tecot S, White BA, Nelson KE, Stumpf RM, Knight R, Leigh SR. 2019. Evolutionary trends in host physiology outweigh dietary niche in structuring primate gut microbiomes. *ISME J* 13:576–587. <https://doi.org/10.1038/s41396-018-0175-0>.
- Nishida AH, Ochman H. 2018. Rates of gut microbiome divergence in mammals. *Mol Ecol* 27:1884–1897. <https://doi.org/10.1111/mec.14473>.
- De Filippo C, Cavalieri D, Di Paola M, Ramazzotti M, Poullet JB, Massart S, Collini S, Pieraccini G, Lionetti P. 2010. Impact of diet in shaping gut microbiota revealed by a comparative study in children from Europe and rural Africa. *Proc Natl Acad Sci U S A* 107:14691–14696. <https://doi.org/10.1073/pnas.1005963107>.
- Yatsunenko T, Rey FE, Manary MJ, Trehan I, Dominguez-Bello MG, Contreras M, Magris M, Hidalgo G, Baldassano RN, Anokhin AP, Heath AC, Warner B, Reeder J, Kuczynski J, Caporaso JG, Lozupone CA, Lauber C, Clemente JC, Knights D, Knight R, Gordon JI. 2012. Human gut microbiome viewed across age and geography. *Nature* 486:222–227. <https://doi.org/10.1038/nature11053>.
- Rampelli S, Schnorr SL, Consolandi C, Turrioni S, Severgnini M, Peano C, Brigidi P, Crittenden AN, Henry AG, Candela M. 2015. Metagenome sequencing of the Hadza hunter-gatherer gut microbiota. *Curr Biol* 25:1682–1693. <https://doi.org/10.1016/j.cub.2015.04.055>.
- Hansen MEB, Rubel MA, Bailey AG, Ranciaro A, Thompson SR, Campbell MC, Beggs W, Dave JR, Mokone GG, Mpoloka SW, Nyambo T, Abnet C,

- Chanock SJ, Bushman FD, Tishkoff SA. 2019. Population structure of human gut bacteria in a diverse cohort from rural Tanzania and Botswana. *Genome Biol* 20:16. <https://doi.org/10.1186/s13059-018-1616-9>.
13. Gomez A, Rothman JM, Petzelkova K, Yeoman CJ, Vlckova K, Umaña JD, Carr M, Modry D, Todd A, Torralba M, Nelson KE, Stumpf RM, Wilson BA, Blekhan R, White BA, Leigh SR. 2016. Temporal variation selects for diet-microbe co-metabolic traits in the gut of Gorilla spp. *ISME J* 10: 514–526. <https://doi.org/10.1038/ismej.2015.146>.
 14. Gomez A, Petzelkova K, Yeoman CJ, Vlckova K, Mrázek J, Koppova I, Carbonero F, Ulanov A, Modry D, Todd A, Torralba M, Nelson KE, Gaskins HR, Wilson B, Stumpf RM, White BA, Leigh SR. 2015. Gut microbiome composition and metabolomic profiles of wild western lowland gorillas (*Gorilla gorilla gorilla*) reflect host ecology. *Mol Ecol* 24:2551–2565. <https://doi.org/10.1111/mec.13181>.
 15. Clayton JB, Vangay P, Huang H, Ward T, Hillmann BM, Al-Ghalith GA, Travis DA, Long HT, Tuan BV, Minh VV, Cabana F, Nadler T, Toddes B, Murphy T, Glander KE, Johnson TJ, Knights D. 2016. Captivity humanizes the primate microbiome. *Proc Natl Acad Sci U S A* 113:10376–10381. <https://doi.org/10.1073/pnas.1521835113>.
 16. Moeller AH, Caro-Quintero A, Mjungu D, Georgiev AV, Lonsdorf EV, Muller MN, Pusey AE, Peeters M, Hahn BH, Ochman H. 2016. Cospeciation of gut microbiota with hominids. *Science* 353:380–382. <https://doi.org/10.1126/science.aaf3951>.
 17. Ley RE, Hamady M, Lozupone C, Turnbaugh PJ, Ramey RR, Bircher JS, Schlegel ML, Tucker TA, Schrenzel MD, Knight R, Gordon JL. 2008. Evolution of mammals and their gut microbes. *Science* 320:1647–1651. <https://doi.org/10.1126/science.1155725>.
 18. NIH HMP Working Group, Peterson J, Garges S, Giovanni M, McInnes P, Wang L, Schloss JA, Bonazzi V, McEwen JE, Wetterstrand KA, Deal C, Baker CC, Di Francesco V, Howcroft TK, Karp RW, Lunsford RD, Wellington CR, Belachew T, Wright M, Giblin C, David H, Mills M, Salomon R, Mullins C, Akolkar B, Begg L, Davis C, Grandison L, Humble M, Khalsa J, Little AR, Peavy H, Pontzer C, Portnoy M, Sayre MH, Starke-Reed P, Zakhari S, Read J, Watson B, Guyer M. 2009. The NIH Human Microbiome Project. *Genome Res* 19: 2317–2323. <https://doi.org/10.1101/gr.096651.109>.
 19. Proctor LM. 2011. The Human Microbiome Project in 2011 and beyond. *Cell Host Microbe* 10:287–291. <https://doi.org/10.1016/j.chom.2011.10.001>.
 20. Raau RL, Sterner KN, Noviello CM, Stewart C-B, Disotell TR. 2005. Catarrhine primate divergence dates estimated from complete mitochondrial genomes: concordance with fossil and nuclear DNA evidence. *J Hum Evol* 48:237–257. <https://doi.org/10.1016/j.jhevol.2004.11.007>.
 21. Garber PA, Righini N, Kowalewski MM. 2015. Evidence of alternative dietary syndromes and nutritional goals in the genus *Alouatta*, p 85–109. In Kowalewski MM, Garber PA, Cortés-Ortiz L, Urbani B, Youlatos D (ed), *Howler monkeys: behavior, ecology, and conservation*. Springer New York, New York, NY.
 22. Wrangham RW, Conklin-Brittain NL, Hunt KD. 1998. Dietary response of chimpanzees and cercopithecines to seasonal variation in fruit abundance. I. Antifeedants. *Int J Primatol* 19:949–970. <https://doi.org/10.1023/A:1020318102257>.
 23. Doran-Sheehy DM, Mongo P, Lodwick J, Conklin-Brittain NL. 2009. Male and female western gorilla diet: preferred foods, use of fallback resources, and implications for ape versus old world monkey foraging strategies. *Am J Phys Anthropol* 140:727–738. <https://doi.org/10.1002/ajpa.21118>.
 24. Rothman JM, Raubenheimer D, Chapman CA. 2011. Nutritional geometry: gorillas prioritize non-protein energy while consuming surplus protein. *Biol Lett* 7:847–849. <https://doi.org/10.1098/rsbl.2011.0321>.
 25. Whiten A, Byrne RW, Barton RA, Waterman PG, Henzi SP. 1991. Dietary and foraging strategies of baboons. *Philos Trans R Soc Lond B Biol Sci* 334:187–195. <https://doi.org/10.1098/rstb.1991.0108>.
 26. Remis MJ, Jost Robinson CA. 2014. Examining short-term nutritional status among BaAka foragers in transitional economies. *Am J Phys Anthropol* 154:365–375. <https://doi.org/10.1002/ajpa.22521>.
 27. Milton K. 1999. Nutritional characteristics of wild primate foods: do the diets of our closest living relatives have lessons for us? *Nutrition* 15: 488–498. [https://doi.org/10.1016/S0899-9007\(99\)00078-7](https://doi.org/10.1016/S0899-9007(99)00078-7).
 28. Panasevich MR, Kerr KR, Dilger RN, Fahey GC, Jr, Guérin-Deremaux L, Lynch GL, Wils D, Suchodolski JS, Steer JM, Dowd SE, Swanson KS. 2015. Modulation of the faecal microbiome of healthy adult dogs by inclusion of potato fibre in the diet. *Br J Nutr* 113:125–133. <https://doi.org/10.1017/S0007114514003274>.
 29. Umu ÖCO, Frank JA, Fangel JU, Oostindjer M, da Silva CS, Bolhuis EJ, Bosch G, Willats WGT, Pope PB, Diep DB. 2015. Resistant starch diet induces change in the swine microbiome and a predominance of beneficial bacterial populations. *Microbiome* 3:16. <https://doi.org/10.1186/s40168-015-0078-5>.
 30. Asp N-G, Björck I. 1992. Resistant starch. *Trends Food Sci Technol* 3:111–114. [https://doi.org/10.1016/0924-2244\(92\)90153-N](https://doi.org/10.1016/0924-2244(92)90153-N).
 31. Reese AT, Carmody RN. 2019. Thinking outside the cereal box: non-carbohydrate routes for dietary manipulation of the gut microbiota. *Appl Environ Microbiol* 85:e02246-18. <https://doi.org/10.1128/AEM.02246-18>.
 32. Vangay P, Johnson AJ, Ward TL, Al-Ghalith GA, Shields-Cutler RR, Hillmann BM, Lucas SK, Beura LK, Thompson EA, Till LM, Batres R, Paw B, Pergament SL, Saenyakul P, Xiong M, Kim AD, Kim G, Masopust D, Martens EC, Angkurawaranon C, McGready R, Kashyap PC, Culhane-Pera KA, Knights D. 2018. US immigration westernizes the human gut microbiome. *Cell* 175:962–972. <https://doi.org/10.1016/j.cell.2018.10.029>.
 33. Martínez I, Stegen JC, Maldonado-Gómez MX, Eren AM, Siba PM, Greenhill AR, Walter J. 2015. The gut microbiota of rural Papua New Guineans: composition, diversity patterns, and ecological processes. *Cell Rep* 11: 527–538. <https://doi.org/10.1016/j.celrep.2015.03.049>.
 34. O’Keefe SJD, Li JV, Lahti L, Ou J, Carbonero F, Mohammed K, Posma JM, Kinross J, Wahl E, Ruder E, Vipperla K, Naidoo V, Mtshali L, Tims S, Puylaert PGB, DeLany J, Krasinskas A, Benefiel AC, Kaseb HO, Newton K, Nicholson JK, de Vos WM, Gaskins HR, Zoetendal EG. 2015. Fat, fibre and cancer risk in African Americans and rural Africans. *Nat Commun* 6:6342. <https://doi.org/10.1038/ncomms7342>.
 35. Wu GD, Chen J, Hoffmann C, Bittinger K, Chen Y-Y, Keilbaugh SA, Bewtra M, Knights D, Walters WA, Knight R, Sinha R, Gilroy E, Gupta K, Baldasano R, Nessell L, Li H, Bushman FD, Lewis JD. 2011. Linking long-term dietary patterns with gut microbial enterotypes. *Science* 334:105–108. <https://doi.org/10.1126/science.1208344>.
 36. Amato KR, Yeoman CJ, Cerda G, Schmitt CA, Cramer JD, Miller MEB, Gomez A, Turner TR, Wilson BA, Stumpf RM, Nelson KE, White BA, Knight R, Leigh SR. 2015. Variable responses of human and non-human primate gut microbiomes to a Western diet. *Microbiome* 3:53. <https://doi.org/10.1186/s40168-015-0120-7>.
 37. Hoover R, Zhou Y. 2003. In vitro and in vivo hydrolysis of legume starches by α -amylase and resistant starch formation in legumes—a review. *Carbohydr Polym* 54:401–417. [https://doi.org/10.1016/S0144-8617\(03\)00180-2](https://doi.org/10.1016/S0144-8617(03)00180-2).
 38. Montagnac JA, Davis CR, Tanumihardjo SA. 2009. Nutritional value of cassava for use as a staple food and recent advances for improvement. *Compr Rev Food Sci Food Saf* 8:181–194. <https://doi.org/10.1111/j.1541-4337.2009.00077.x>.
 39. Deehan EC, Walter J. 2016. The fiber gap and the disappearing gut microbiome: implications for human nutrition. *Trends Endocrinol Metab* 27:239–242. <https://doi.org/10.1016/j.tem.2016.03.001>.
 40. Sonnenburg ED, Smits SA, Tikhonov M, Higginbottom SK, Wingreen NS, Sonnenburg JL. 2016. Diet-induced extinctions in the gut microbiota compound over generations. *Nature* 529:212–215. <https://doi.org/10.1038/nature16504>.
 41. Cardinale BJ, Palmer MA, Collins SL. 2002. Species diversity enhances ecosystem functioning through interspecific facilitation. *Nature* 415: 426–429. <https://doi.org/10.1038/415426a>.
 42. Wolff SM, Ellison MJ, Hao Y, Cockrum RR, Austin KJ, Baraboo M, Burch K, Lee HJ, Maurer T, Patil R, Ravelo A, Taxis TM, Truong H, Lamberson WR, Cammack KM, Conant GC. 2017. Diet shifts provoke complex and variable changes in the metabolic networks of the ruminal microbiome. *Microbiome* 5:60. <https://doi.org/10.1186/s40168-017-0274-6>.
 43. Cordain L, Eaton SB, Sebastian A, Mann N, Lindeberg S, Watkins BA, O’Keefe JH, Brand-Miller J. 2005. Origins and evolution of the Western diet: health implications for the 21st century. *Am J Clin Nutr* 81:341–354. <https://doi.org/10.1093/ajcn.81.2.341>.
 44. Eaton SB, Konner MJ, Cordain L. 2010. Diet-dependent acid load, paleolithic nutrition, and evolutionary health promotion. *Am J Clin Nutr* 91:295–297. <https://doi.org/10.3945/ajcn.2009.29058>.
 45. Luxwolda MF, Kuipers RS, Kema IP, Dijck-Brouwer DAJ, Muskiet F. 2012. Traditionally living populations in East Africa have a mean serum 25-hydroxyvitamin D concentration of 115 nmol/l. *Br J Nutr* 108:1557–1561. <https://doi.org/10.1017/S0007114511007161>.
 46. Konner M, Eaton SB. 2010. Paleolithic nutrition: twenty-five years later. *Nutr Clin Pract* 25:594–602. <https://doi.org/10.1177/0884533610385702>.
 47. Ruggles KV, Wang J, Volkova A, Contreras M, Noya-Alarcon O, Lander O, Caballero H, Dominguez-Bello MG. 2018. Changes in the gut microbiota of urban subjects during an immersion in the traditional diet and

- lifestyle of a rainforest village. *mSphere* 3:e00193-18. <https://doi.org/10.1128/mSphere.00193-18>.
48. Amato KR, Leigh SR, Kent A, Mackie RI, Yeoman CJ, Stumpf RM, Wilson BA, Nelson KE, White BA, Garber PA. 2015. The gut microbiota appears to compensate for seasonal diet variation in the wild black howler monkey (*Alouatta pigra*). *Microb Ecol* 69:434–443. <https://doi.org/10.1007/s00248-014-0554-7>.
 49. Caporaso JG, Kuczynski J, Stombaugh J, Bittinger K, Bushman FD, Costello EK, Fierer N, Peña AG, Goodrich JK, Gordon JI, Huttley GA, Kelley ST, Knights D, Koenig JE, Ley RE, Lozupone CA, McDonald D, Muegge BD, Pirrung M, Reeder J, Sevinsky JR, Turnbaugh PJ, Walters WA, Widmann J, Yatsunenko T, Zaneveld J, Knight R. 2010. QIIME allows analysis of high-throughput community sequencing data. *Nat Methods* 7:335–336. <https://doi.org/10.1038/nmeth.f.303>.
 50. R Core Team. 2017. R: a language and environment for statistical computing. R Foundation for Statistical Computing, Vienna, Austria.
 51. McMurdie PJ, Holmes S. 2013. phyloseq: an R package for reproducible interactive analysis and graphics of microbiome census data. *PLoS One* 8:e61217. <https://doi.org/10.1371/journal.pone.0061217>.
 52. Oksanen J, Blanchet FG, Kindt R, Legendre P, Minchin PR, O'Hara RB, Simpson GL, Solymos P, Stevens MHH, Wagner H. 2011. vegan: community ecology package. <https://CRAN.R-project.org/package=vegan>.
 53. Liaw A, Wiener M. 2002. Classification and regression by randomForest. *R News* 2:18–22.
 54. Roberts DW. 2016. labdsv: ordination and multivariate analysis for ecology. R Package, version 1. <https://cran.r-project.org/>.
 55. Paradis E, Claude J, Strimmer K. 2004. APE: analyses of phylogenetics and evolution in R language. *Bioinformatics* 20:289–290. <https://doi.org/10.1093/bioinformatics/btg412>.
 56. Thompson JD, Higgins DG, Gibson TJ. 1994. CLUSTAL W: improving the sensitivity of progressive multiple sequence alignment through sequence weighting, position-specific gap penalties and weight matrix choice. *Nucleic Acids Res* 22:4673–4680. <https://doi.org/10.1093/nar/22.22.4673>.
 57. Yu G, Smith DK, Zhu H, Guan Y, Lam TT-Y. 2017. ggtree: an R package for visualization and annotation of phylogenetic trees with their covariates and other associated data. *Methods Ecol Evol* 8:28–36. <https://doi.org/10.1111/2041-210X.12628>.
 58. Wickham H, Chang W. 2008. ggplot2: an implementation of the grammar of graphics. R package version 0.7. <http://CRAN.R-project.org/package=ggplot2>.