

University of Nebraska - Lincoln
DigitalCommons@University of Nebraska - Lincoln

Papers in Natural Resources

Natural Resources, School of

10-3-2019

Catchment size is an important factor in mapping long-term flood behaviour

Jozsef Szilagyi

Budapest University of Technology and Economics, jszilagy1@unl.edu

Janos Jozsa

Budapest University of Technology and Economics

Eszter Dora Nagy

Budapest University of Technology and Economics

Tamas Kramer

Budapest University of Technology and Economics

Marta Farkas Spitzerne

Hungarian Hydrological Forecasting Service

Follow this and additional works at: <https://digitalcommons.unl.edu/natrespapers>

 Part of the [Hydrology Commons](#)

Szilagyi, Jozsef; Jozsa, Janos; Nagy, Eszter Dora; Kramer, Tamas; and Spitzerne, Marta Farkas, "Catchment size is an important factor in mapping long-term flood behaviour" (2019). *Papers in Natural Resources*. 1041.

<https://digitalcommons.unl.edu/natrespapers/1041>

This Article is brought to you for free and open access by the Natural Resources, School of at DigitalCommons@University of Nebraska - Lincoln. It has been accepted for inclusion in Papers in Natural Resources by an authorized administrator of DigitalCommons@University of Nebraska - Lincoln.

Catchment size is an important factor in mapping long-term flood behaviour

József Szilágyi, János Józsa, Eszter Dóra Nagy, Tamás Krámer & Márta Farkas Spitzerné

COMMENT ON Blöschl, G. et al. Changing climate both increases and decreases European river floods. *Nature*, **573**, 108-111, (2019); <https://doi.org/10.1038/s41586-019-1495-6>

From an analysis of 3,738 river gauging stations¹ of catchments ranging from 5 to 100,000 km², Blöschl et al.² constructed a map that depicts trends of annual maximum discharges across Europe for the 1960-2010 period. On that map Hungary, one of the most flood-prone countries in Europe³, appears with nearly unanimously decreasing flood discharges which is in stark contrast with the reality of worsening floods on the Danube over the past 50-60 years in Hungary (Fig. 1), costing €58 million in flood defence in 2013 alone⁴, a year with record-breaking flood. The contradiction arises due to differences in scale for the drainage area between the Danube (i.e., over 100,000 km² in Hungary) and the ones employed for the preparation of the map.

In general, the streamflow behaviour of a large river at a given location cannot be predicted from similar behaviour of the nearest sub-catchments as the relative contribution of streamflow from such watersheds diminishes in gaining streams with distance travelled down the main river. In particular, the flood behaviour of the Danube in Hungary is chiefly influenced by what is happening over its headwaters in southern Germany and western Austria where flood conditions generally worsened².

As the database¹ also contains gauging stations with corresponding drainage area in excess of 100,000 km², the authors could have produced an additional map depicting flood trends at stations along the largest rivers in Europe (similar to their Fig. 3), thus providing a more realistic picture of changing flooding conditions across the continent and that way resolving the contradiction their map generates for Hungary, as an example. Had such an additional map not been feasible due to scarcity of stations in the database, some discussion would still have been warranted about this specific limitation of their approach and the possible (and indeed real) contradictions it may evoke. In its present form the study of Blöschl et al.² fails to include (and explain) flood tendencies for high-risk zones along the largest rivers that already pose the strongest flood-related destruction potential for society.

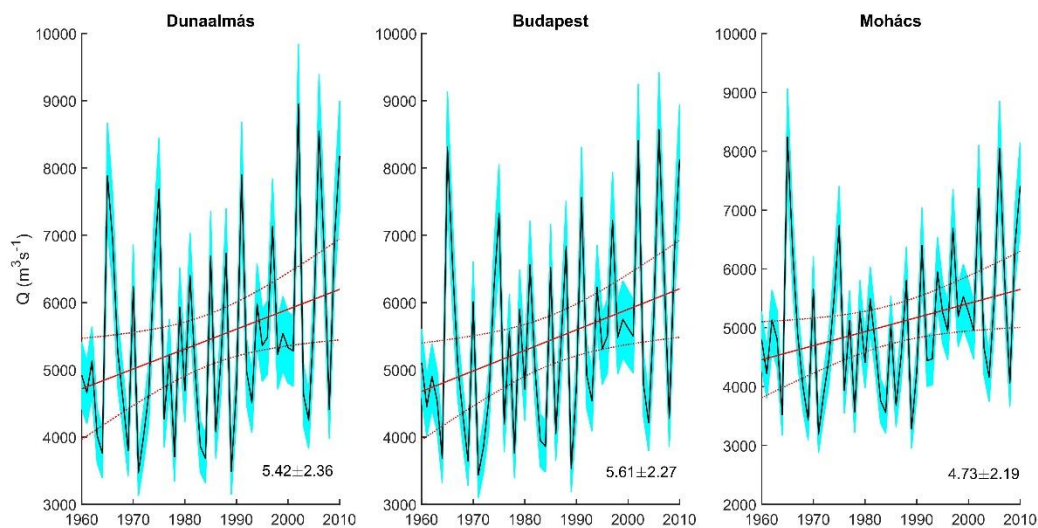
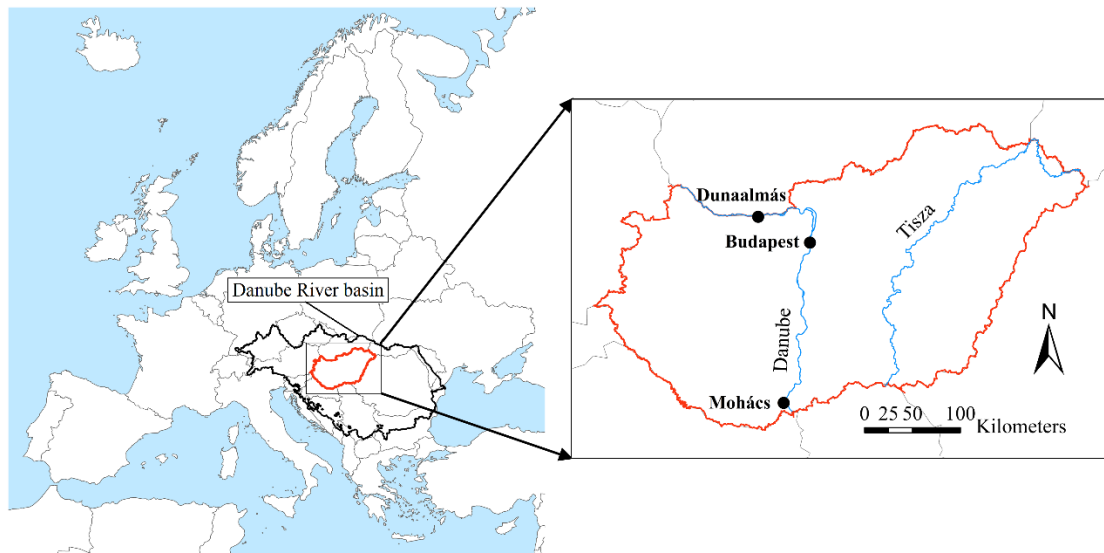


Fig. 1 | Annual maximum (1960-2010) discharge rates and their least-squares fitted linear trends at selected gauging stations along the Hungarian section of the Danube. The shaded bands represent a 10% assumed measurement error in the discharge rates. The strips around the trend lines denote the 95% confidence intervals. All positive trends are significant at the 5% level of the modified Mann-Kendall trend test⁵. The numbers denote the estimated change (with its standard error) in mean annual flood discharge per decade (%).

Data availability

The annual maximum discharge values of Fig. 1 can be obtained from the corresponding author upon request. Daily discharge data can also be requested from <http://www.ovf.hu/hu/adatigenyles>.

References

1. Hall, J. et al. A European Flood Database: facilitating comprehensive flood research beyond administrative boundaries. *Proc. Int. Assoc. Hydrol. Sci.* **370**, 89-95 (2015).

2. Blöschl, G. et al. Changing climate both increases and decreases European river floods. *Nature*, **573**, 108-111 (2019).
3. EUCOLD Working Group on Levees and Flood Defences. *European and US levees and flood defences: characteristics, risks and governance*, ISBN 979-10-96371-08-2.
4. International Commission for the Protection of the Danube River. *Floods in June 2013 in the Danube River basin*. https://www.icpdr.org/main/sites/default/files/nodes/documents/icpdr_floods-report-web_0.pdf
5. Hamed, K. H. & Rao, A. R. A modified Mann-Kendall trend test for autocorrelated data. *J. Hydrol.* **204(1-4)**, 182-196 (1998).

Affiliations

Conservation and Survey Division, School of Natural Resources, University of Nebraska-Lincoln, Lincoln, Nebraska, USA

József Szilágyi

Department of Hydraulic and Water Resources Engineering, Budapest University of Technology and Economics, Budapest, Hungary

József Szilágyi, János Józsa, Eszter Dóra Nagy, Tamás Krámer

Hungarian Hydrological Forecasting Service, Budapest, Hungary

Márta Farkas Spitzerné

Water Management Research Group of the Hungarian Academy of Sciences at Budapest University of Technology and Economics, Budapest, Hungary

János Józsa

Contributions

All authors collaborated on the design of the study, the interpretation of the results and writing the manuscript.

Corresponding author

Correspondence to József Szilágyi: szilagyi@vit.bme.hu

Competing interests

Declared none.