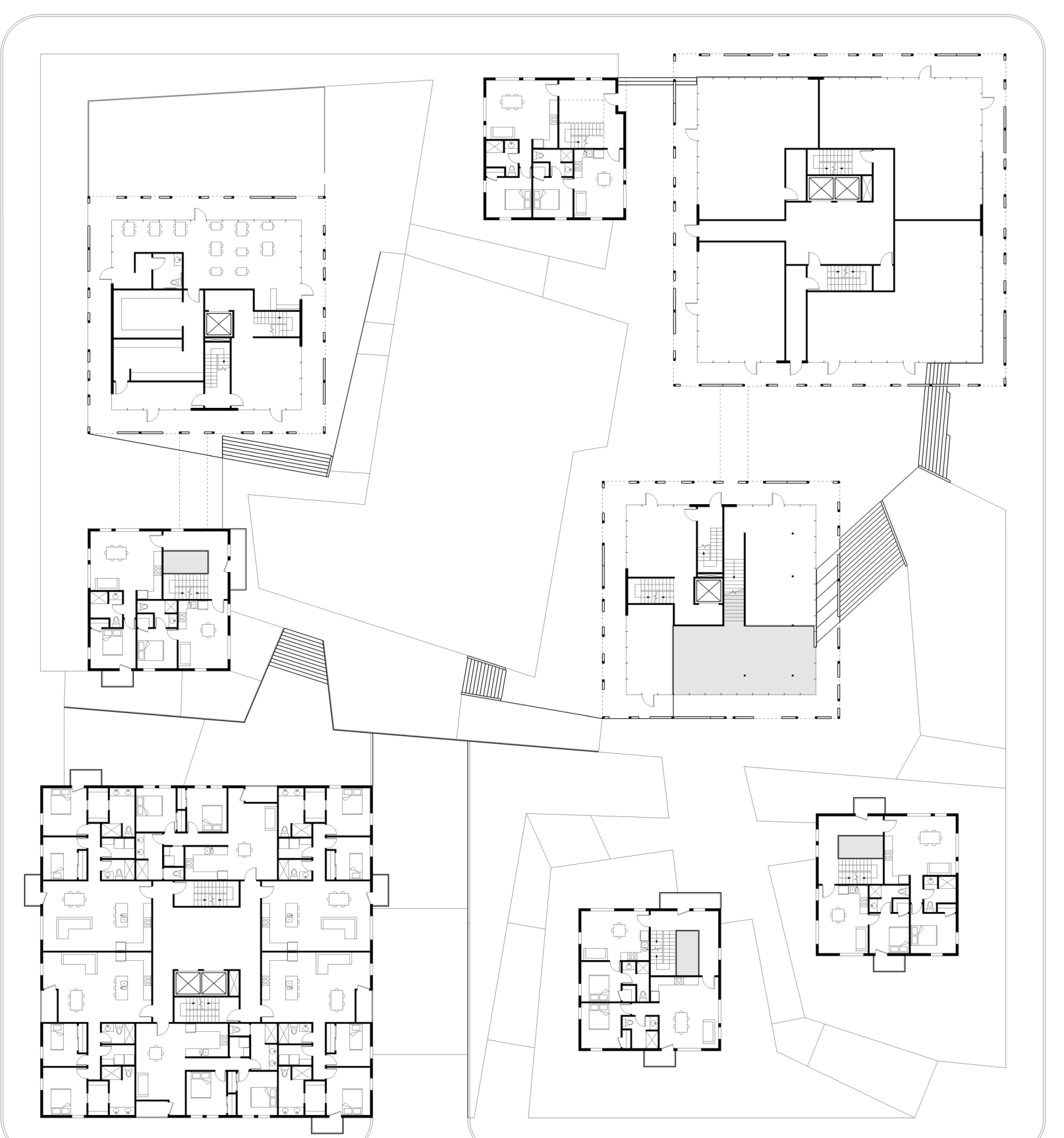


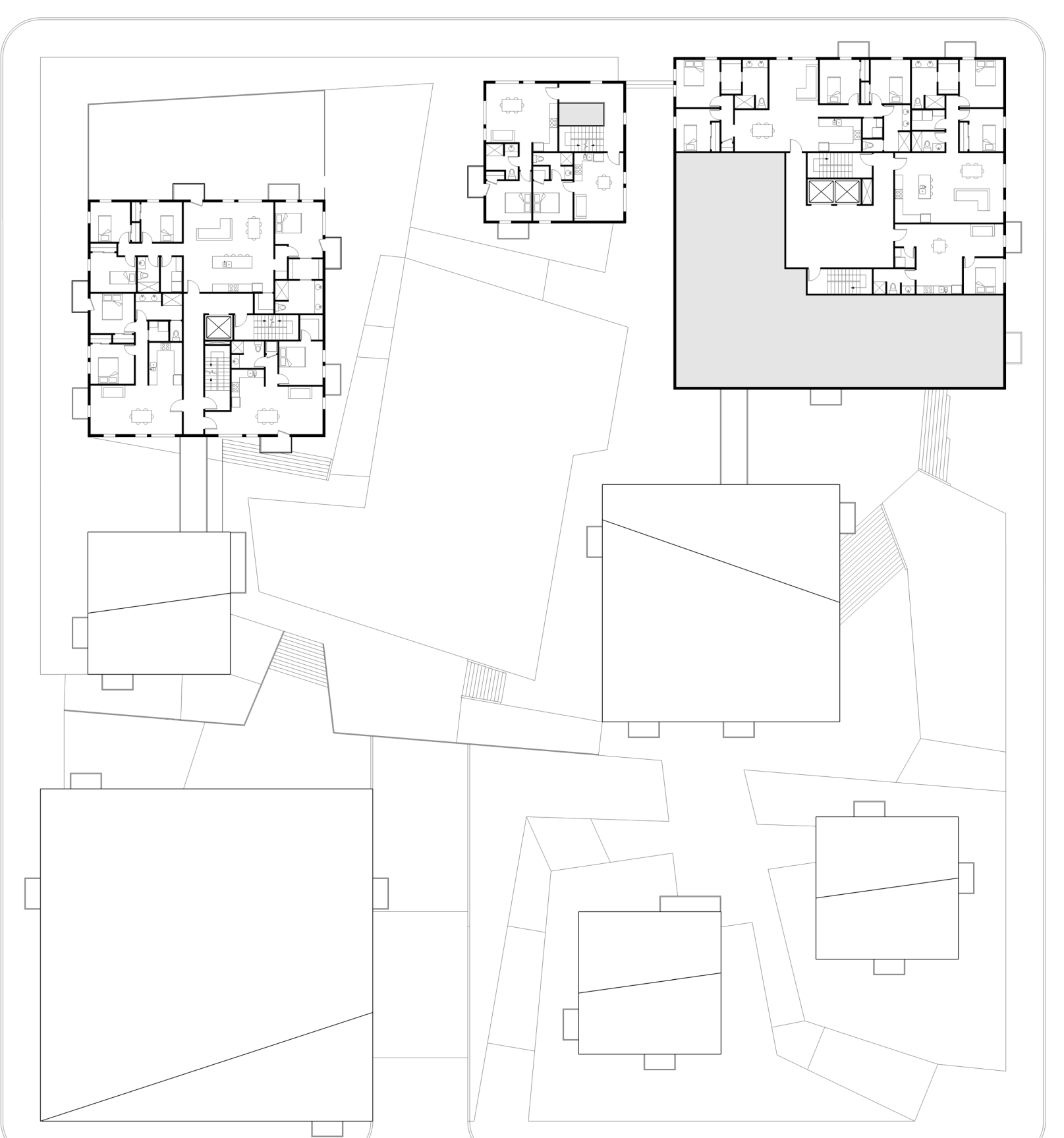
SITE PLAN AT 7'



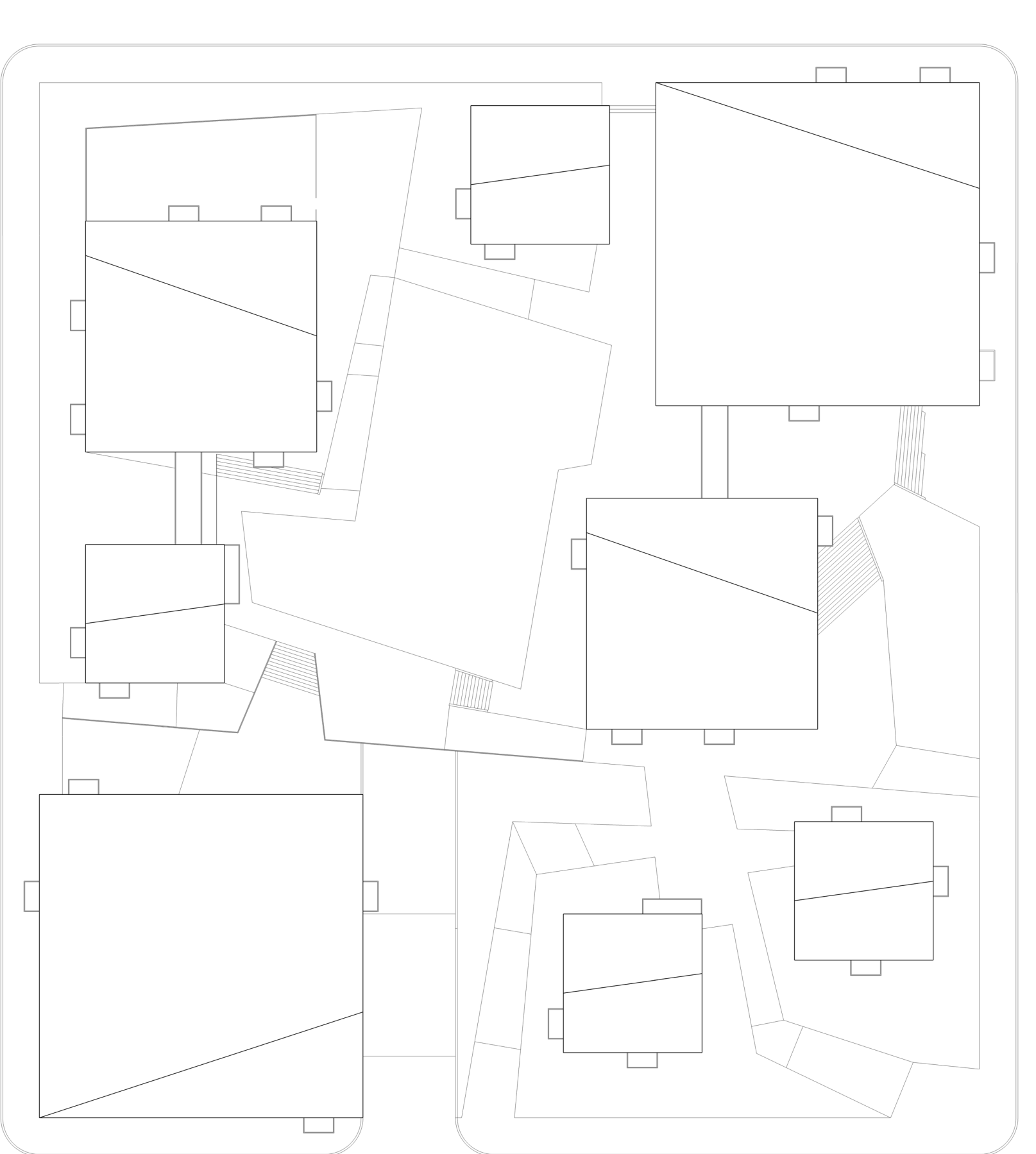
SITE PLAN AT 17'



SITE PLAN AT 27'



SITE PLAN AT 37'

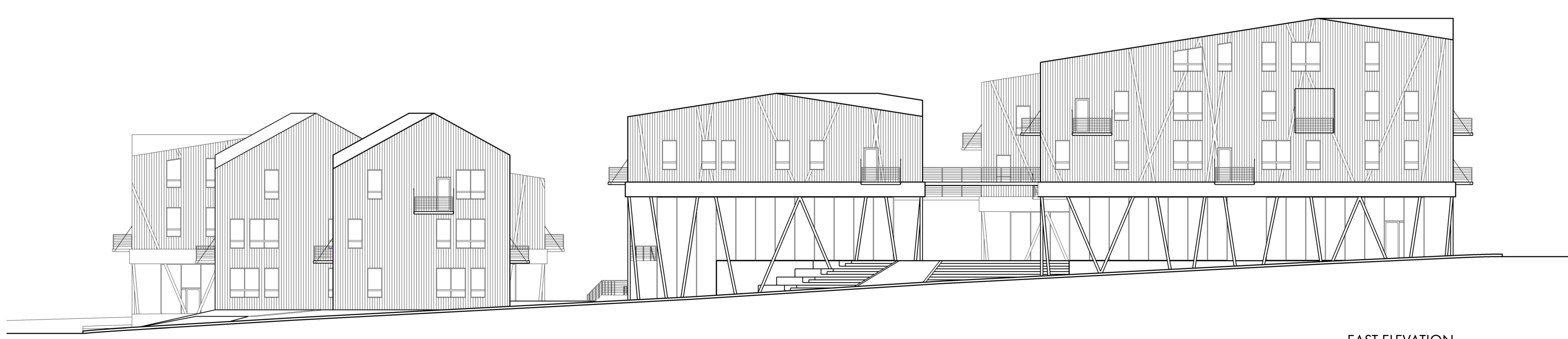


ROOF PLAN

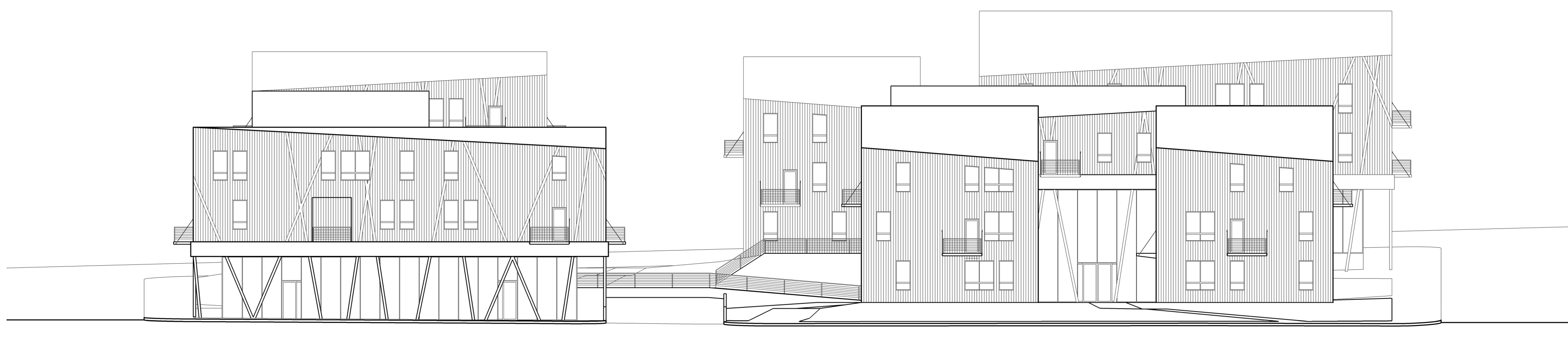


THE RANCH

FOSTER WESTOVER / KENT MACDONALD / ARCH 353 / SPRING 2019

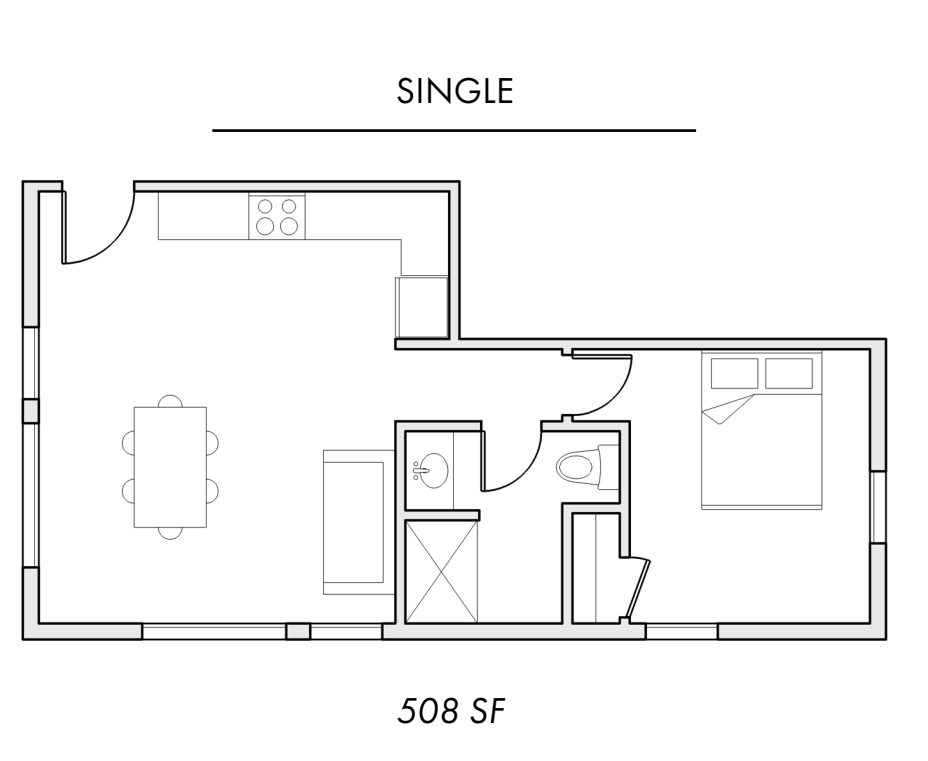


EAST ELEVATION
1/16" = 1'

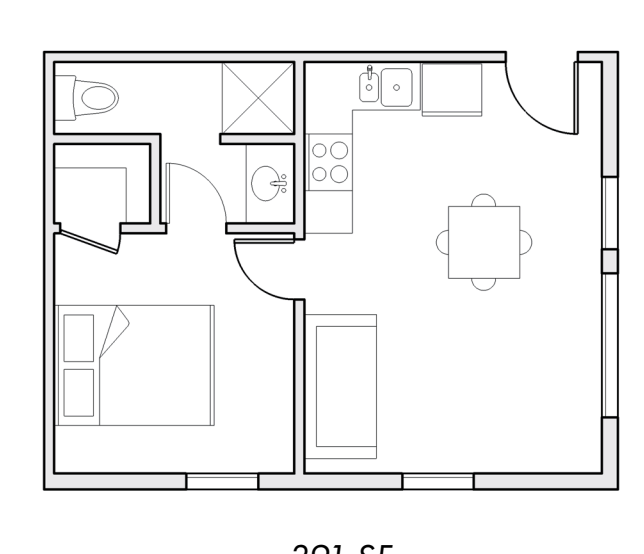


SOUTH ELEVATION
1/16" = 1'

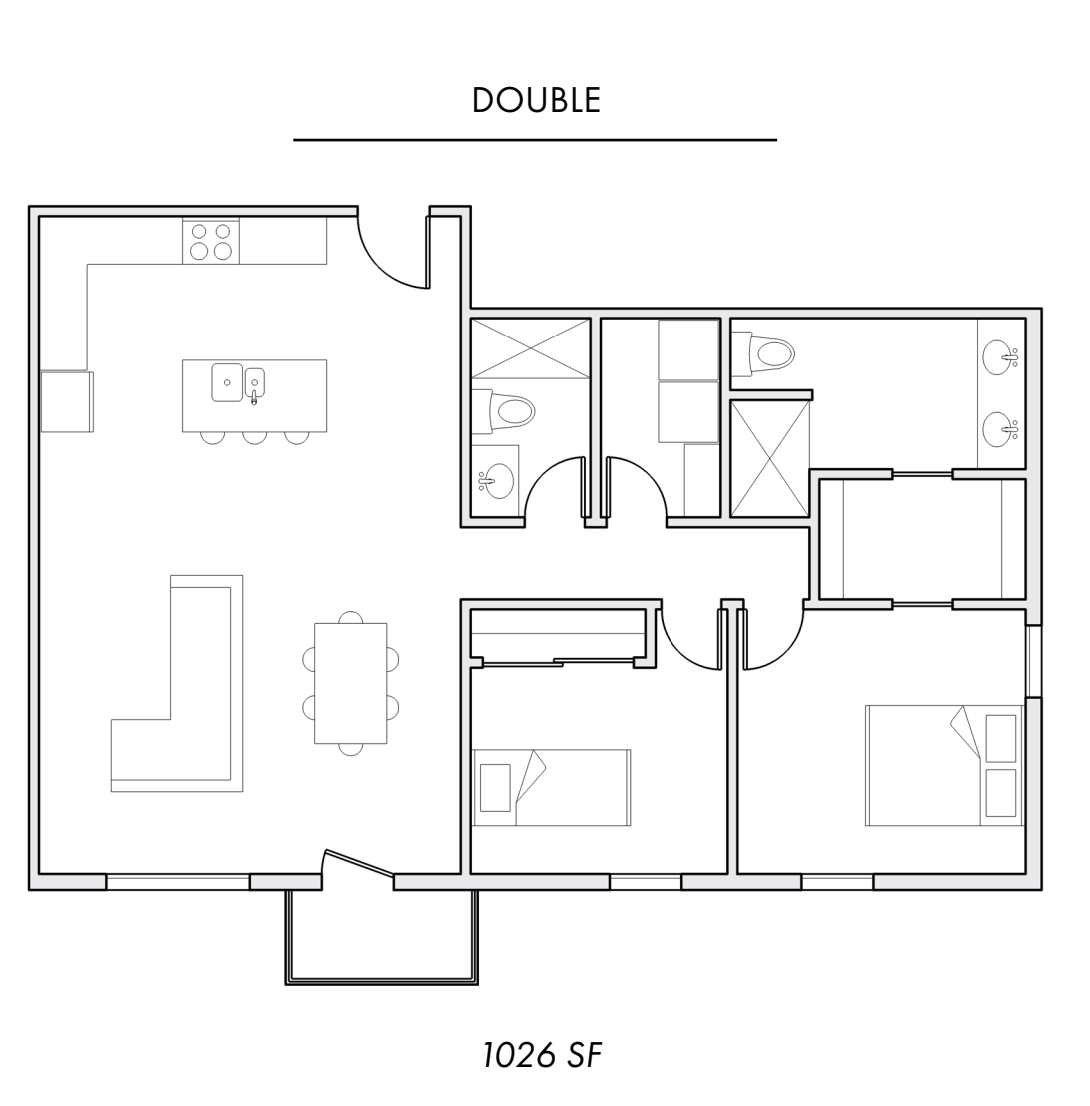
TYPICAL UNIT LAYOUTS



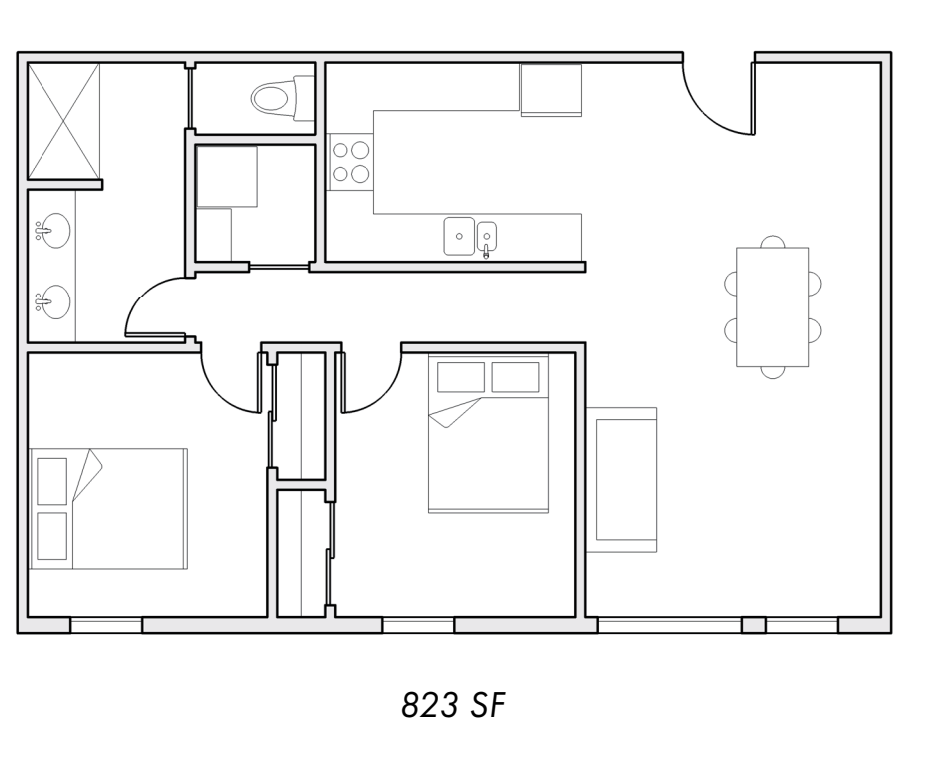
508 SF



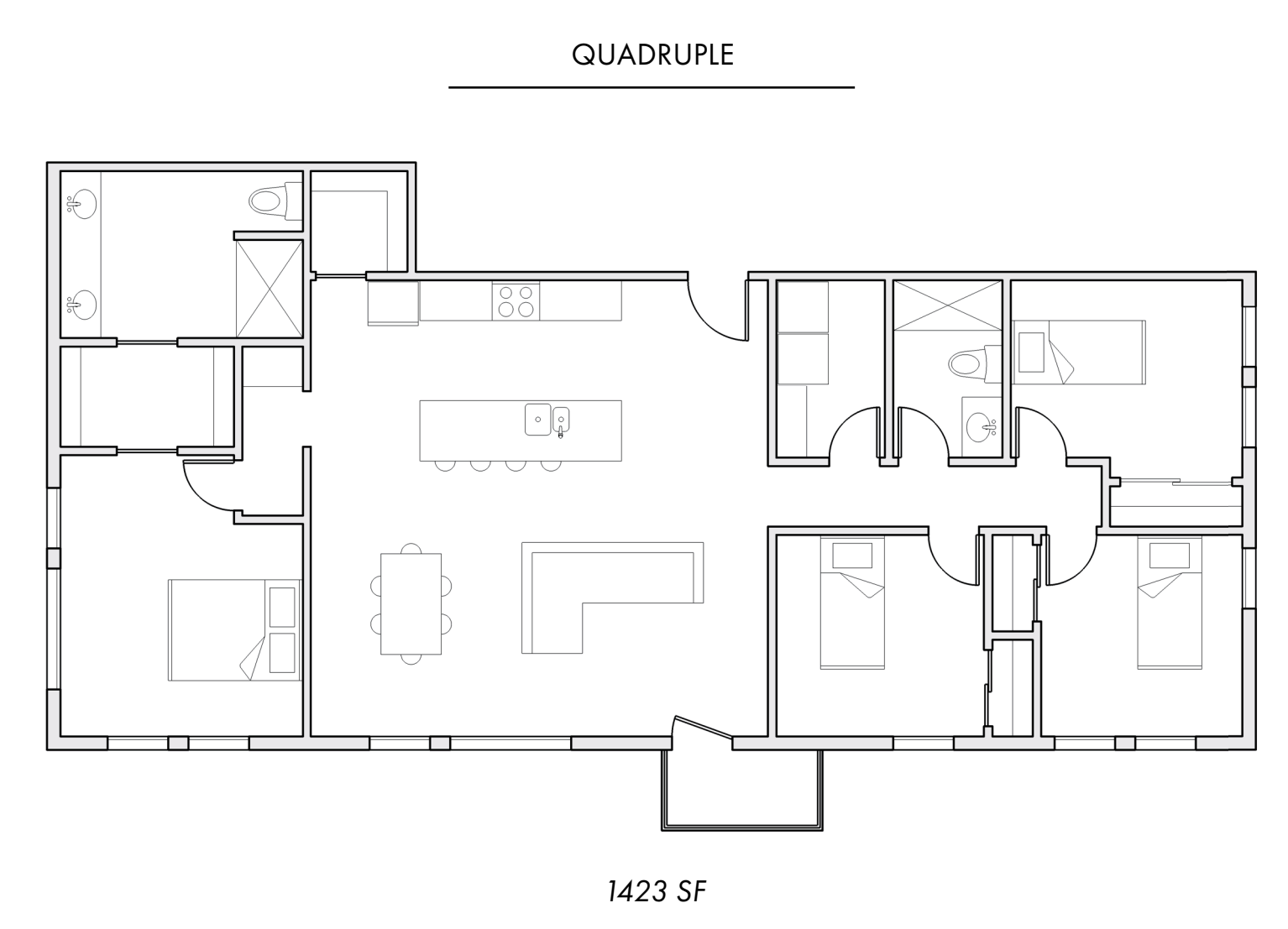
391 SF



1026 SF



823 SF



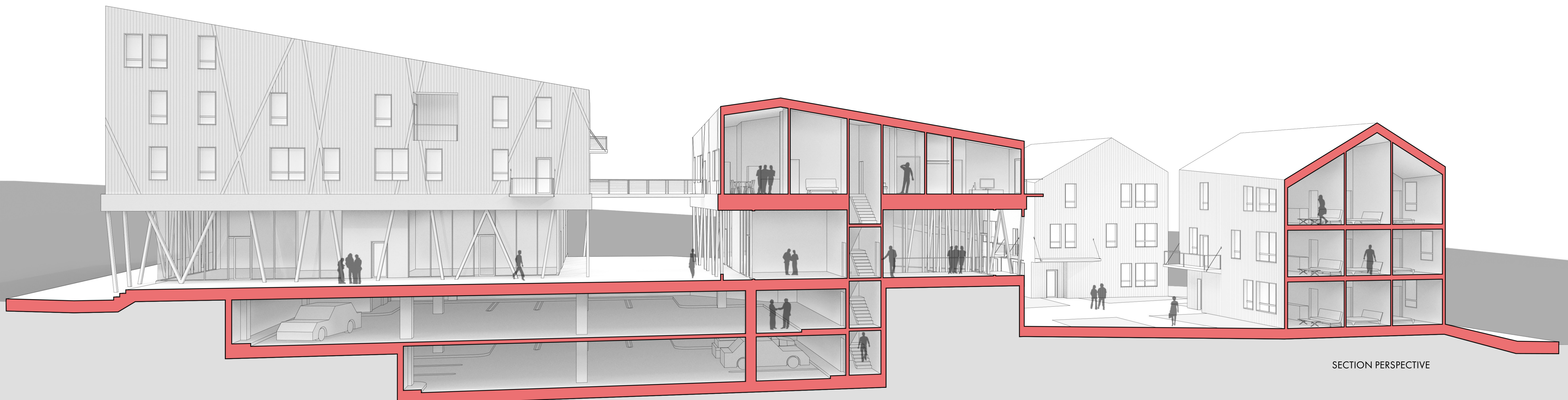
1423 SF

SUMMARY

The Ranch is a town within a town, located in the proposed downtown area, the project consists of four residential buildings and four mixed-use buildings that contain residential units on the upper floors and commercial spaces on the ground floor. Residents of Paradise and residents of The Ranch alike will have access to grocery stores, restaurants, retail, and other necessities all within a single town block. For Paradise, The Ranch will become a frequented spot due to its many amenities, while those who actually live in The Ranch will never have to leave home again.

- 30 Singles
- 19 Doubles
- 5 Quadruples

54 Total Units
39,735 SF Total Residential Space



SECTION PERSPECTIVE



WALL SECTION
1/16" = 1'

