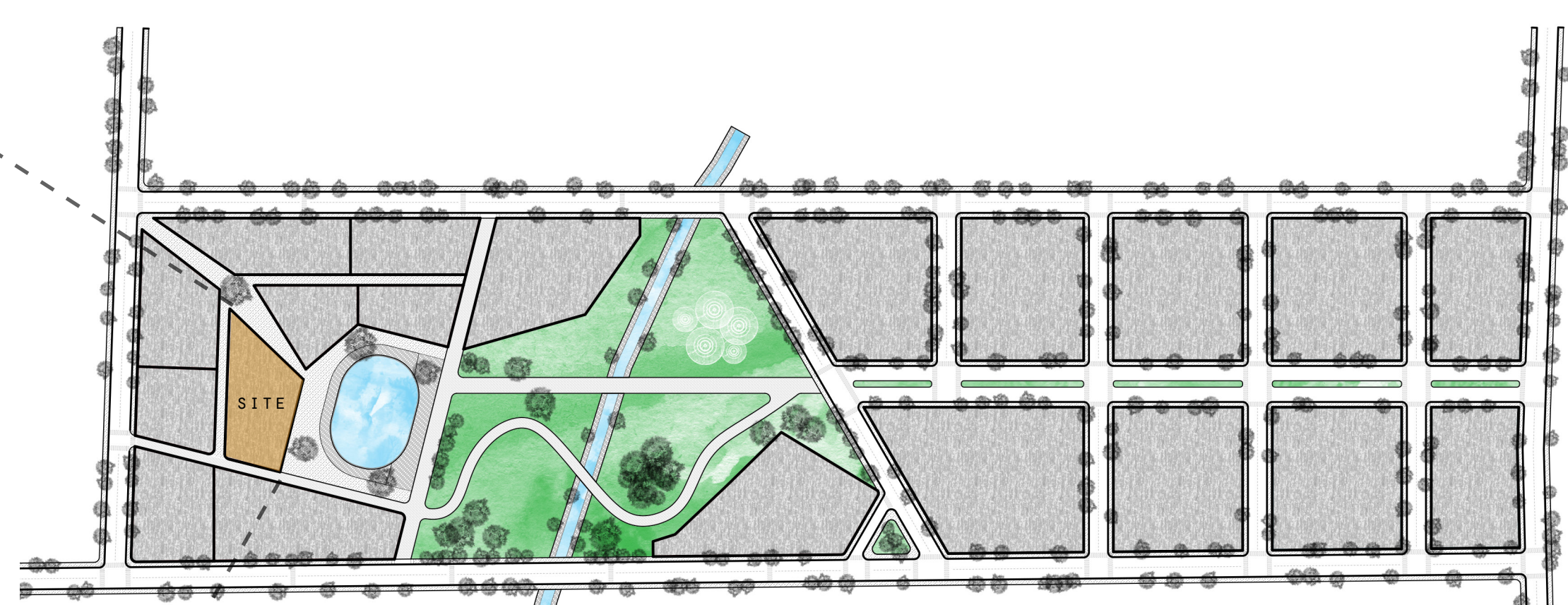
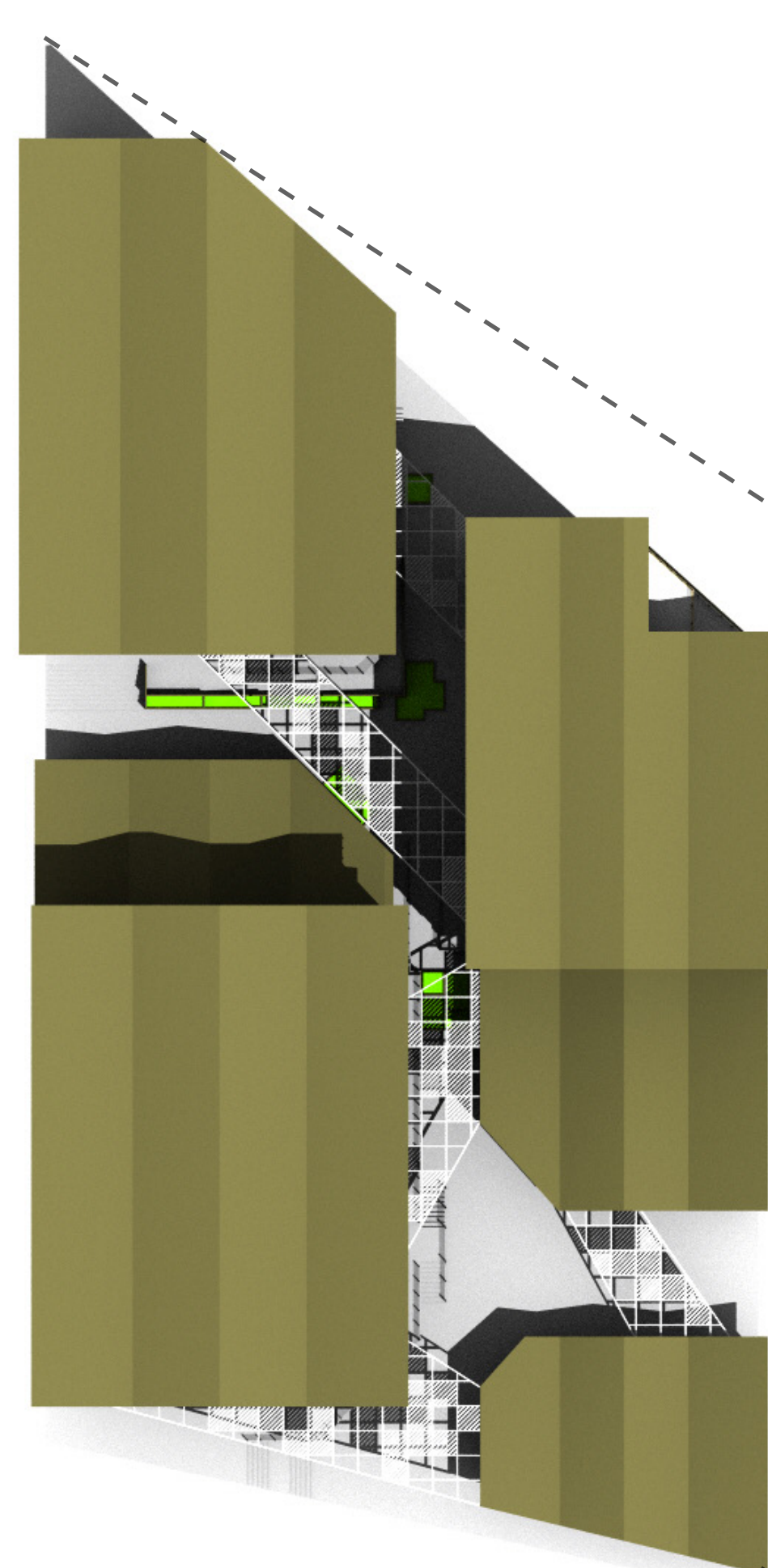
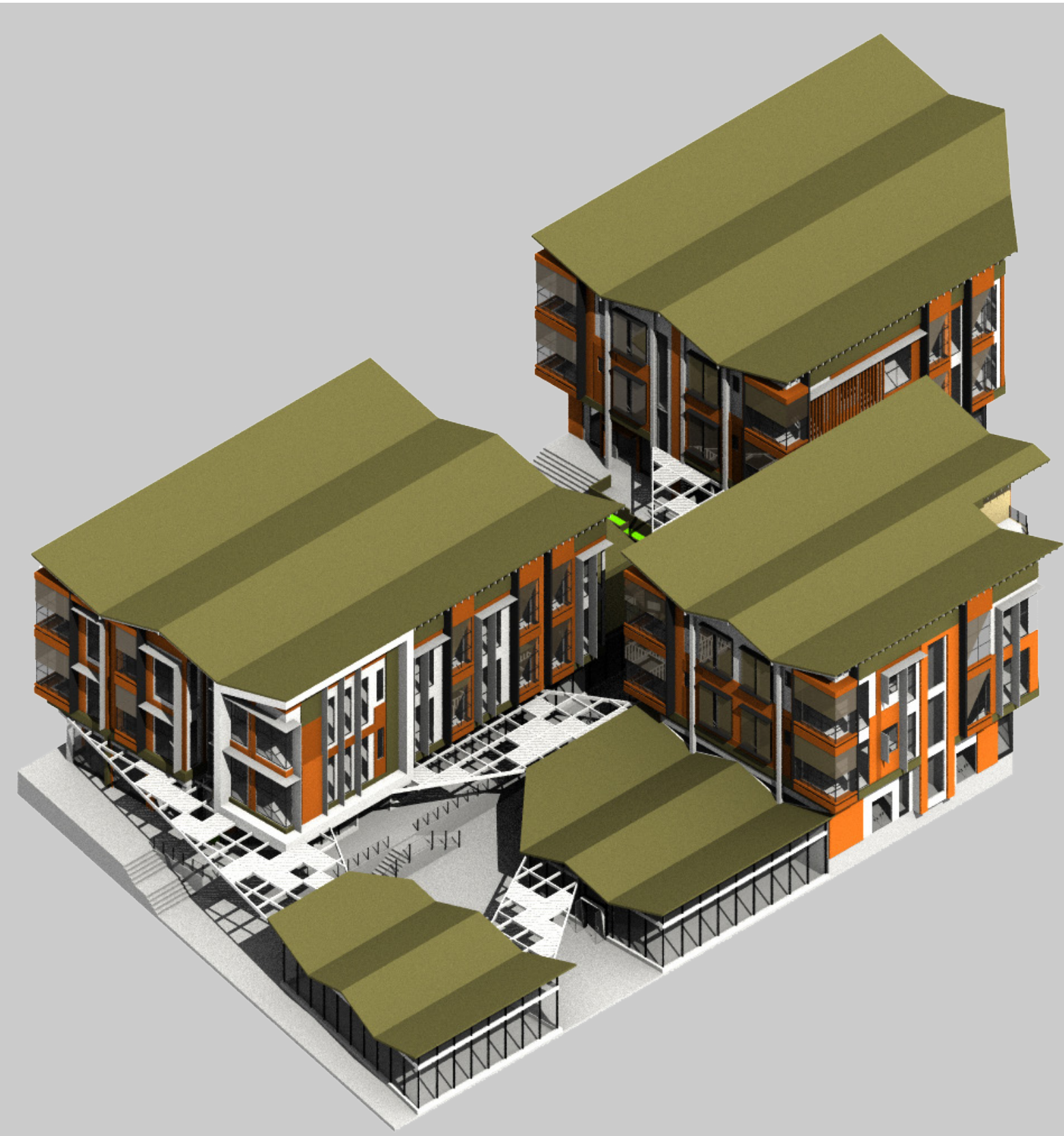


THE CANOPY

THIS MIXED-USE RESIDENTIAL BUILDING AIMS TO INTRODUCE ACTIVATED PUBLIC SPACES SERVING DOWNTOWN EAST VILLAGE, PROVIDING LOCATIONS FOR SHOPPING, DINING, AND RELAXING. A LARGE FLEXIBLE SPACE IS INCORPORATED INTO THE GROUND FLOOR OF ONE OF THE TOWERS, POTENTIALLY SERVING AS AN AREA FOR A FARMER'S MARKET, OR OTHER EVENTS. THIS SPOT IS LARGELY TRANSPARENT, SPILLING OUT INTO THE EXTERIOR PUBLIC SPACE.

EAST VILLAGE
PARADISE, CA
KHOA LE
STUDIO MACDONALD
SPRING 2019

THE ROOF CANOPY SEPARATES THE PUBLIC FROM THE PRIVATE, AND THE RESIDENTIAL TOWERS SEEMINGLY GROW OUT OF IT, LIKE TALL TREES IN A FOREST.

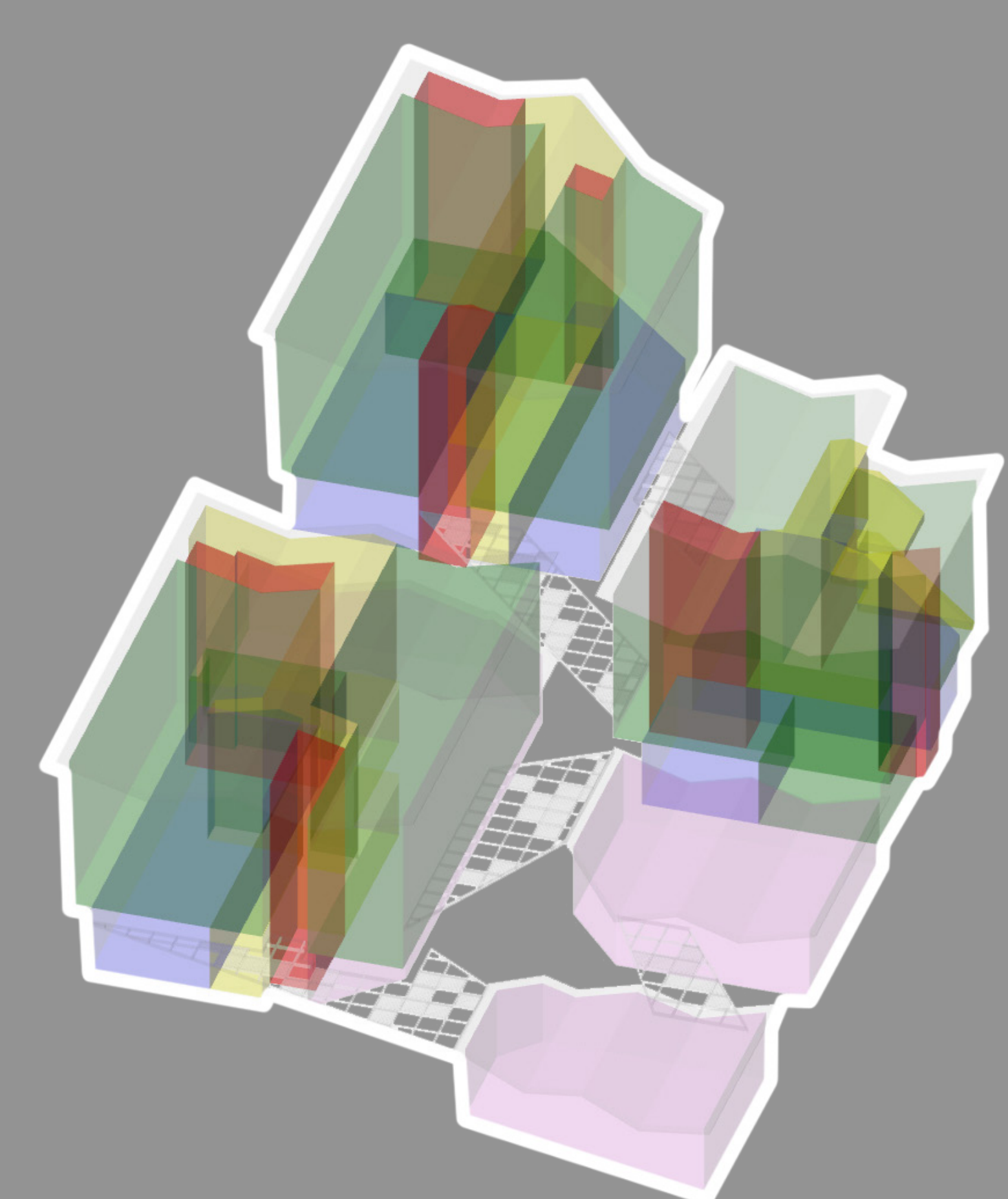


DOWNTOWN PLAN 0' 128' 256' 512' 1024'

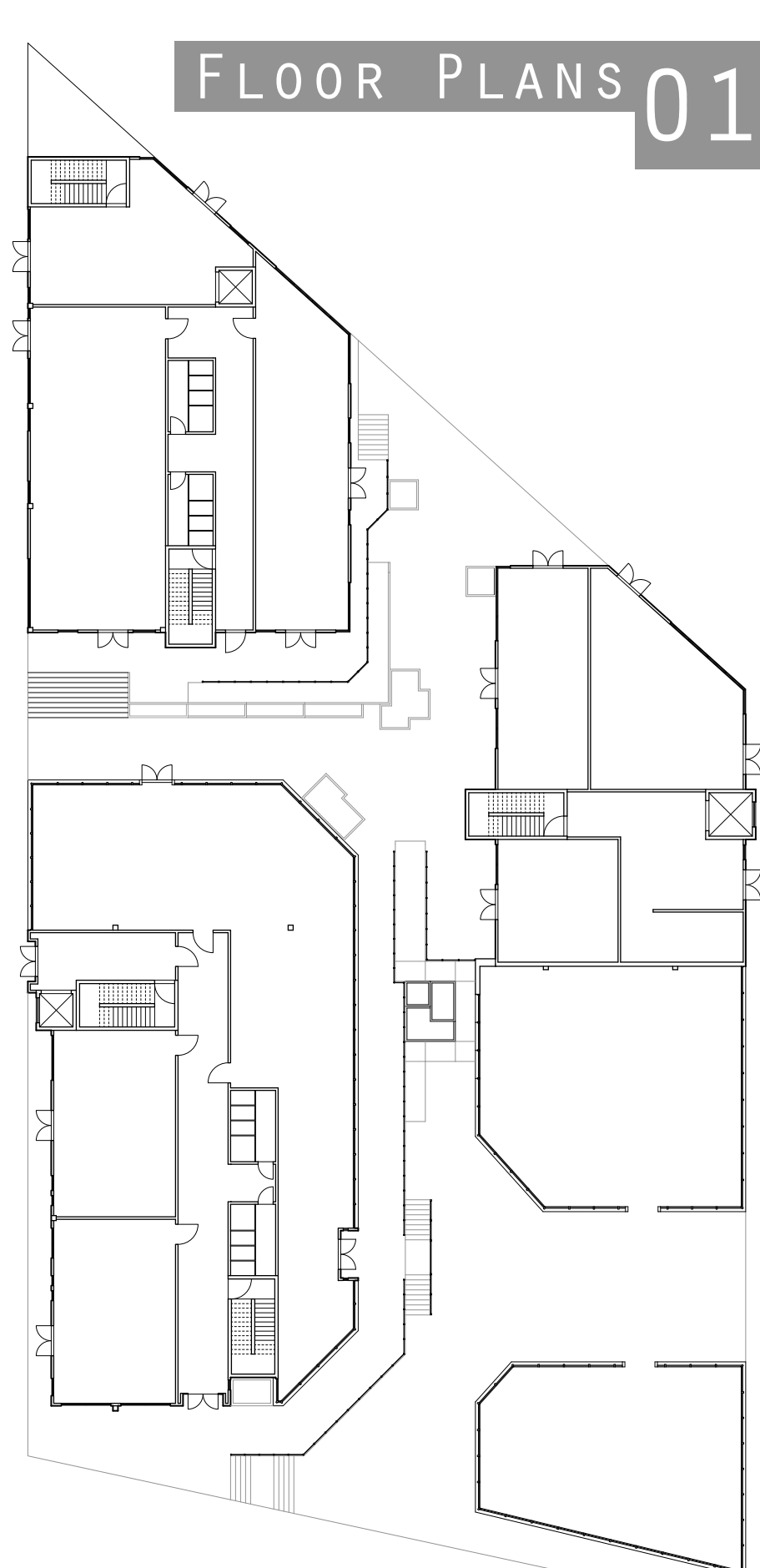
DESIGNED BY STUDIO MACDONALD, WINTER/SPRING 2019



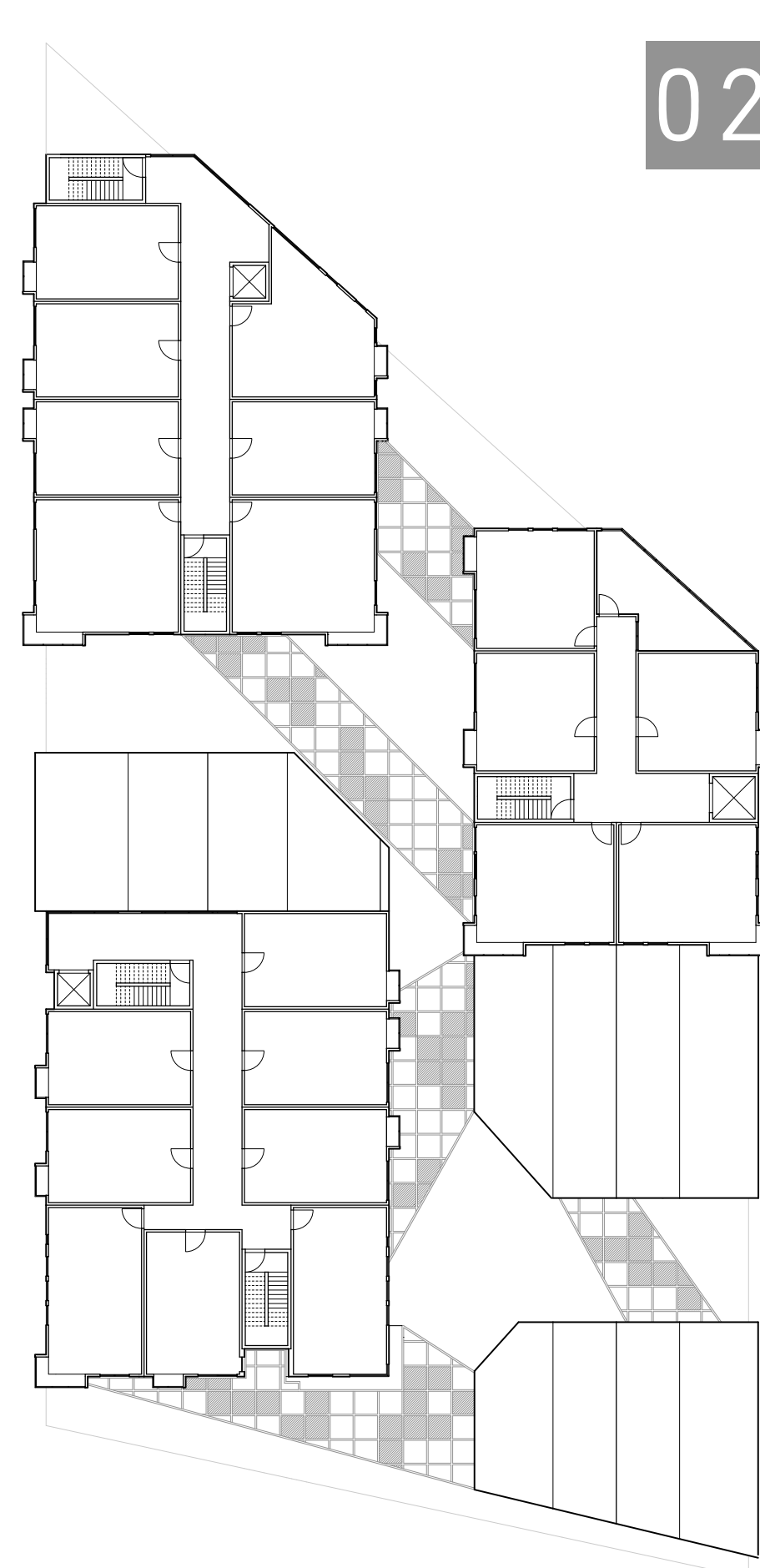
CENTRAL OPEN SPACE (NIGHT)



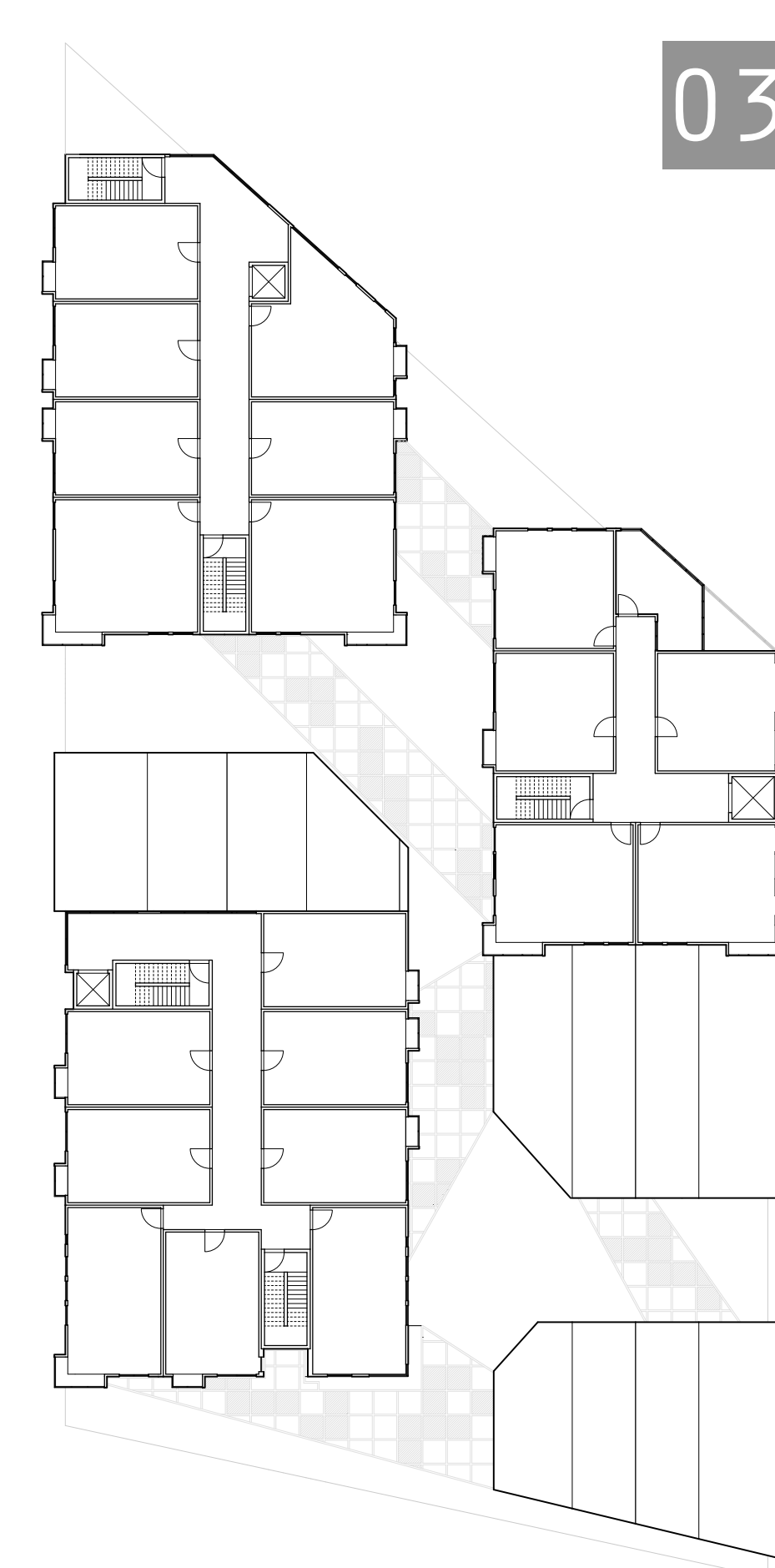
- RESIDENTIAL
- COMMERCIAL
- FOREST
- CIRCULATION
- FARMER'S MARKET



FLOOR PLANS 01



02

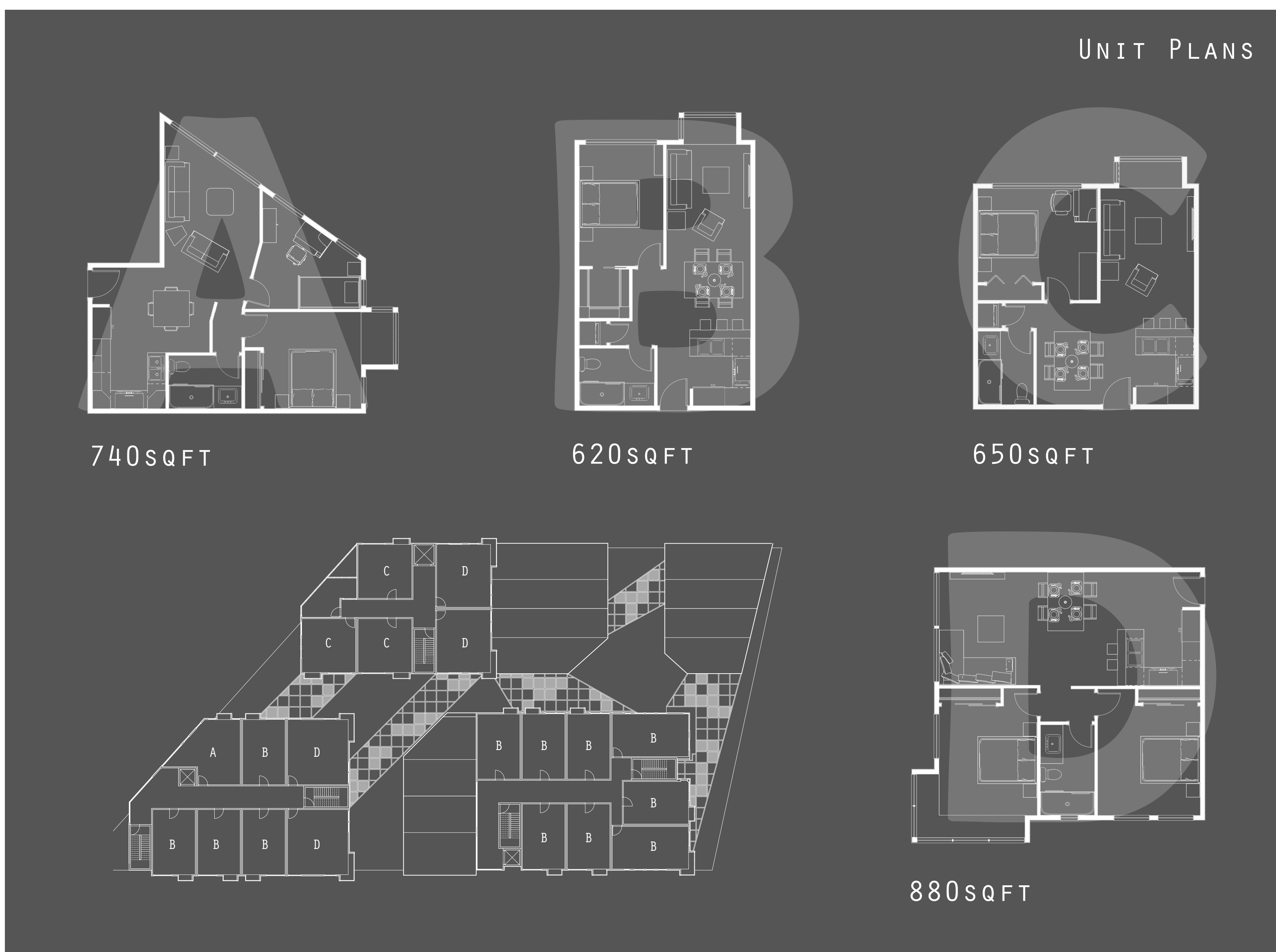
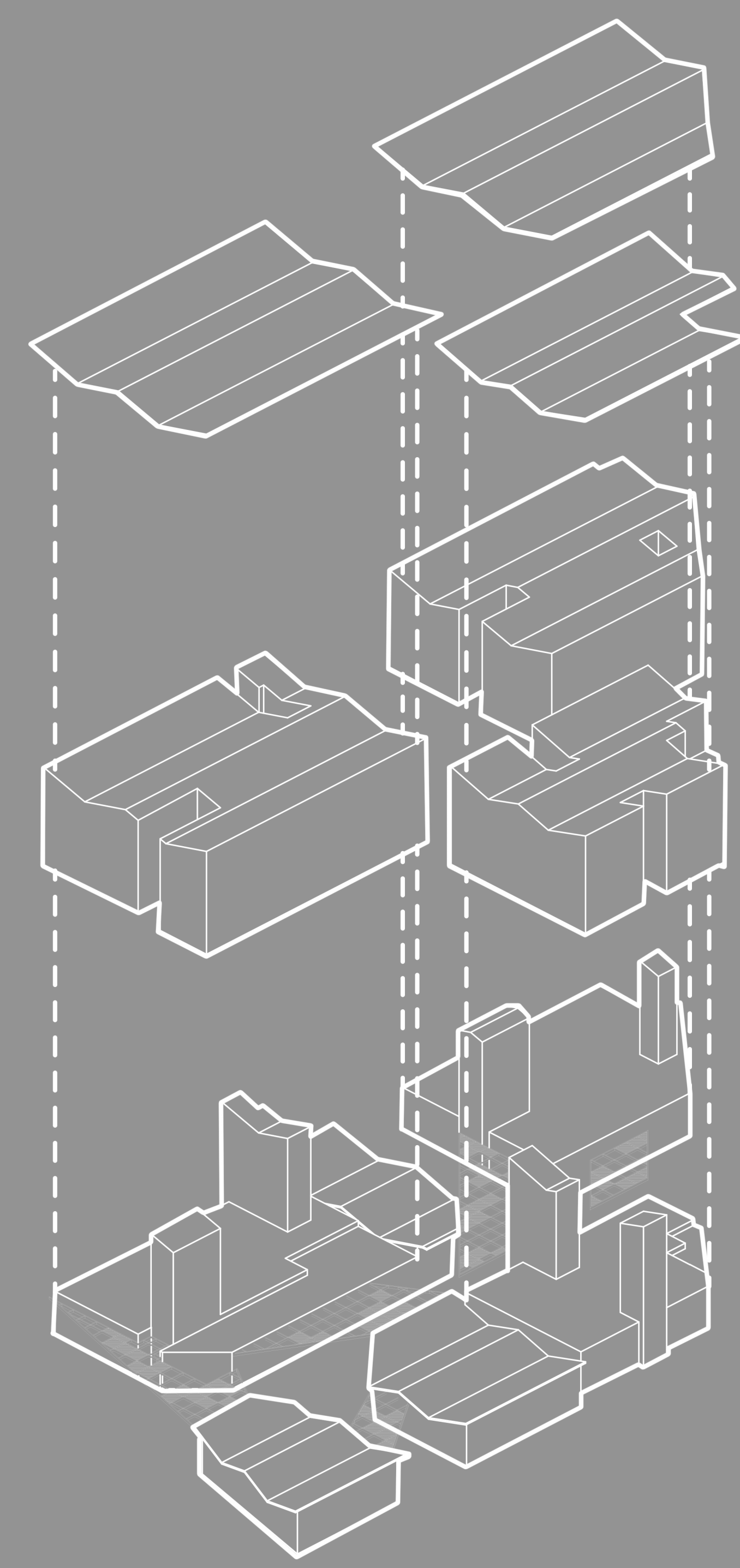


03

0' 16' 32' 64' 160'



CENTRAL OPEN SPACE (DAY)



UNIT PLANS

740sqft

620sqft

650sqft

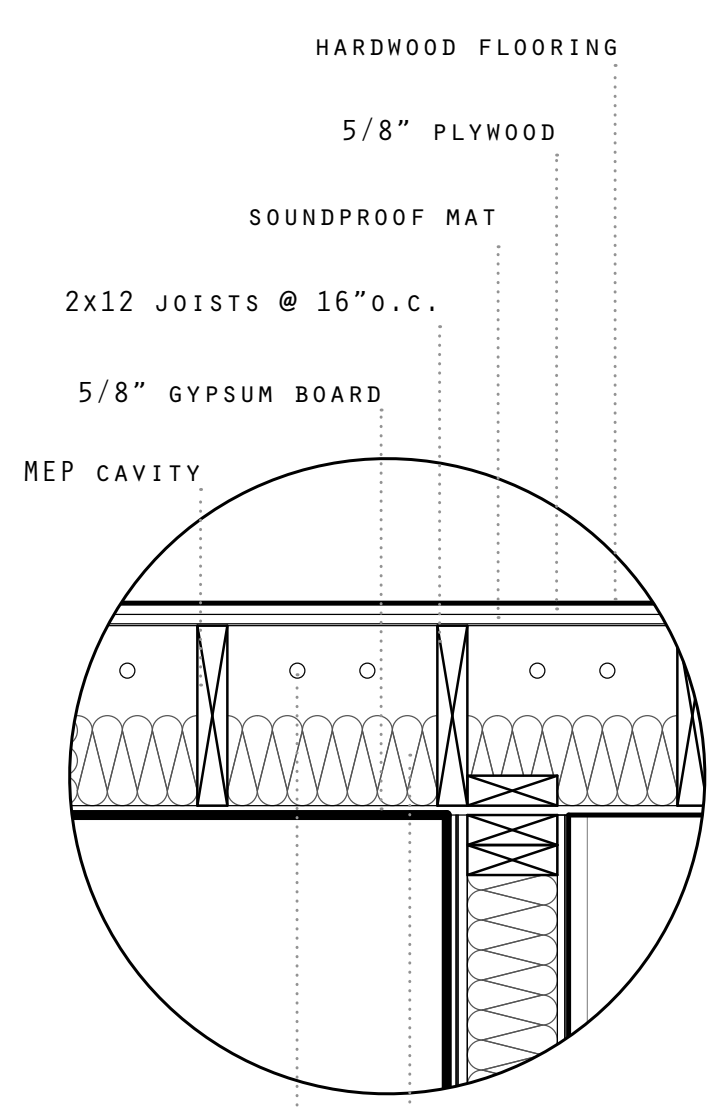
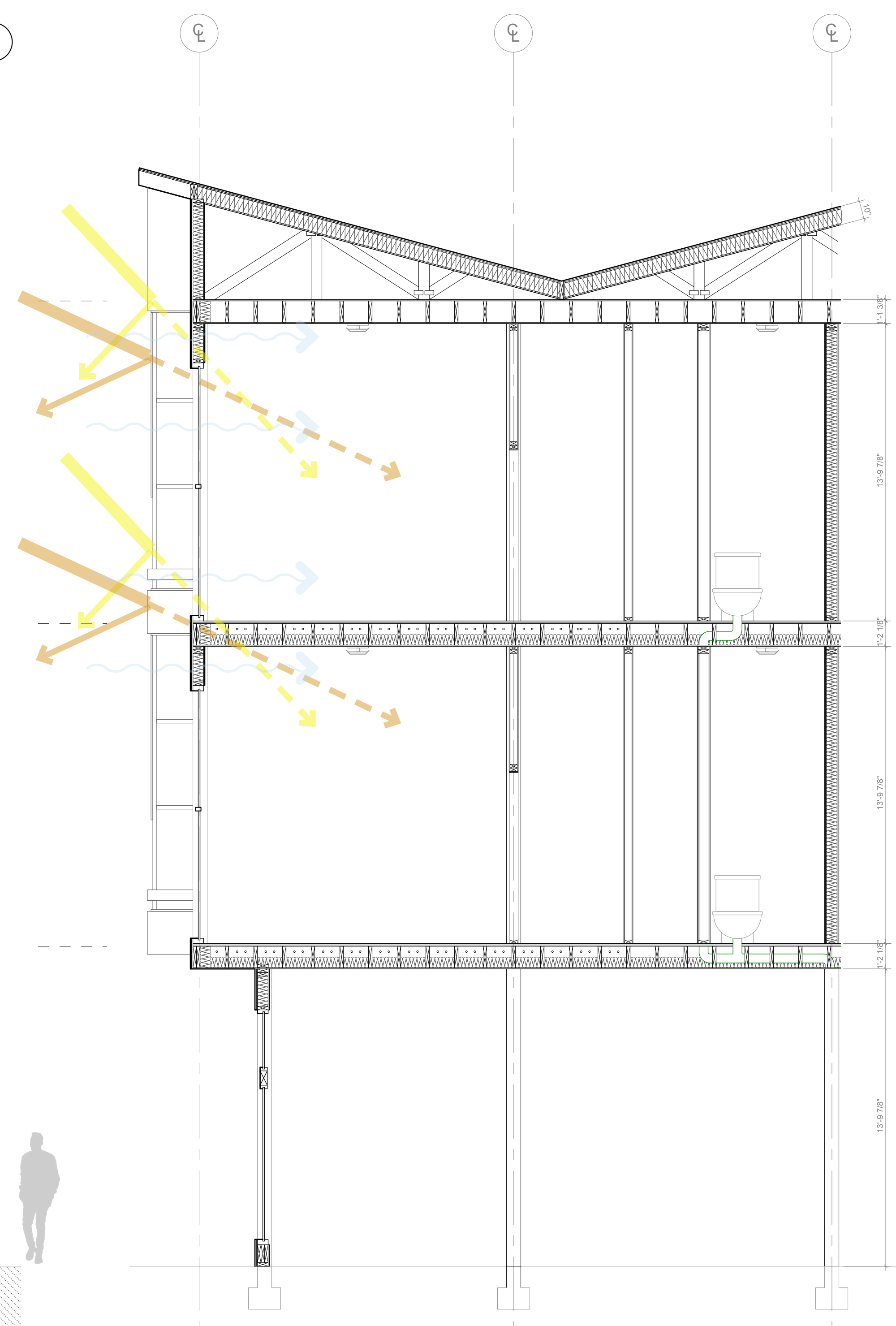
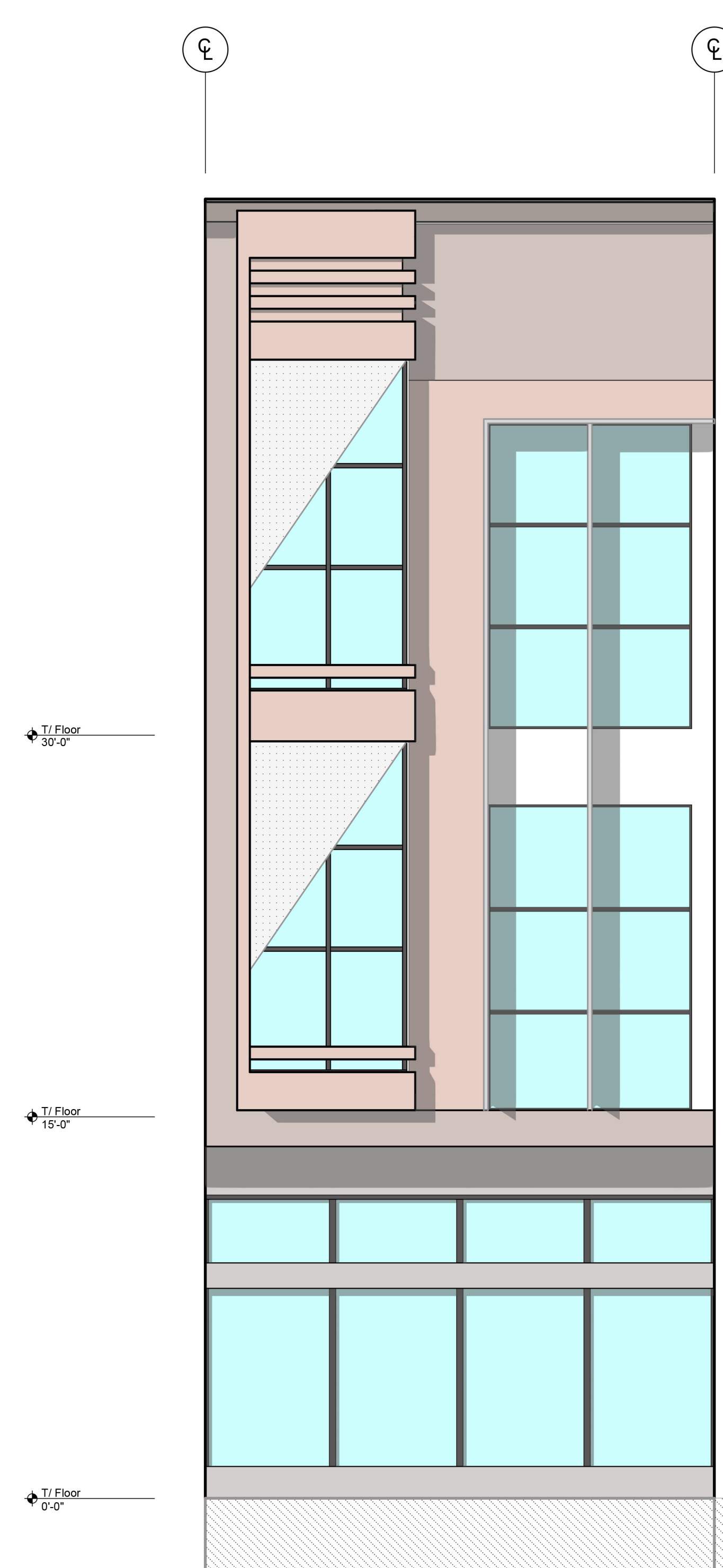
880sqft



UNDER THE CANOPY

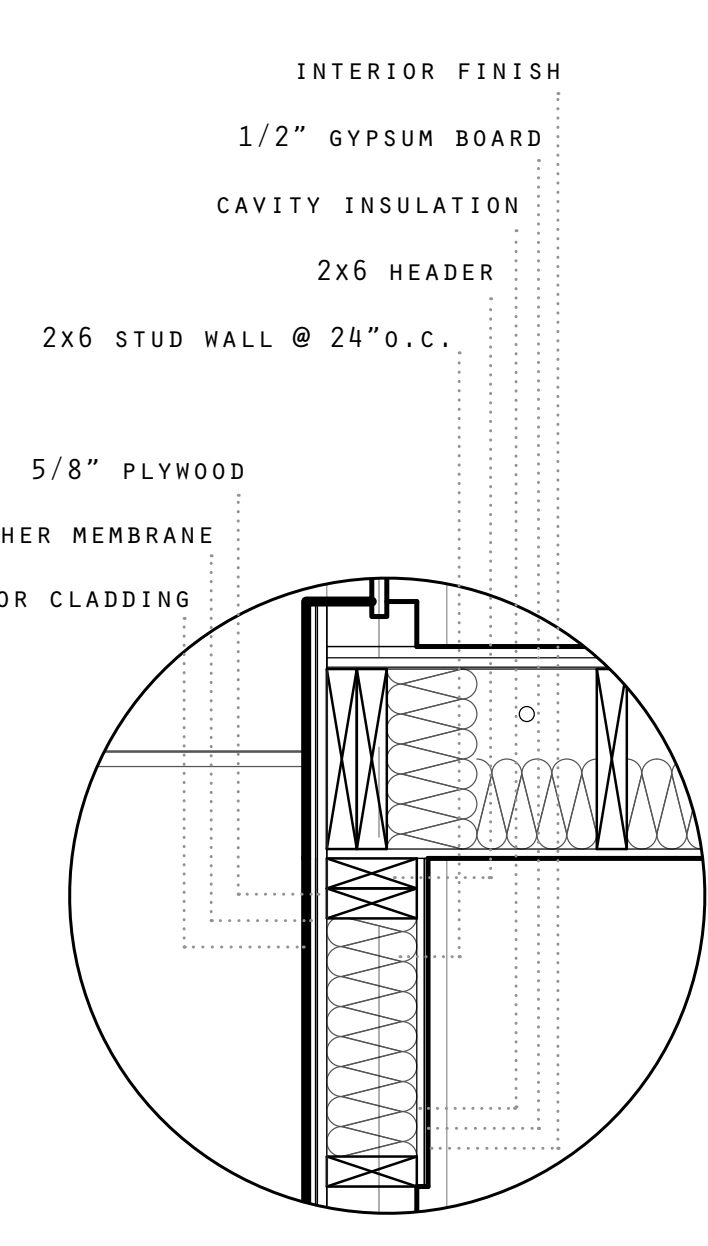


MAIN CIRCULATION ARTERY



RADIANT FLOOR HEATING

CAVITY INSULATION



ACCESS FROM WEST SIDE



ELEVATIONS