

Making Software into a Program

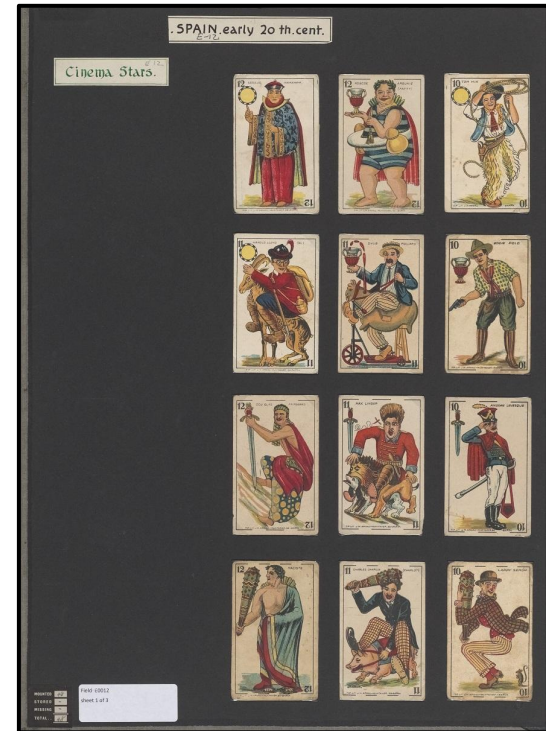
Columbia University Libraries' Hyacinth User Group

By: Violeta Ilik, *Brian Luna Lucero, *Timothy Mendenhall,
*Melanie Wacker, Alexander Whelan
(alphabetical order, * = presenting)

Columbia University Libraries
<https://doi.org/10.7916/d8-2p4w-0t69>

What is Hyacinth?

- Developed by CUL applications team
- Content management for a Fedora repository
- Input through web UI or .csv
- Controlled vocabulary management
- DOI registration
- Automated record creation
- Multimedia annotation



Spanish playing cards. ca 1915

Hyacinth Developers



Illustrated Map of Constantinople ("Byzantium Nunc Constantinopolis"). 1624

Eric O'Hanlon

Lead Hyacinth Developer

Benjamin Armintor

Head of Development
Infrastructure and Applications

Carla Galarza

Hyacinth Developer

Fred Duby

Hyacinth Developer

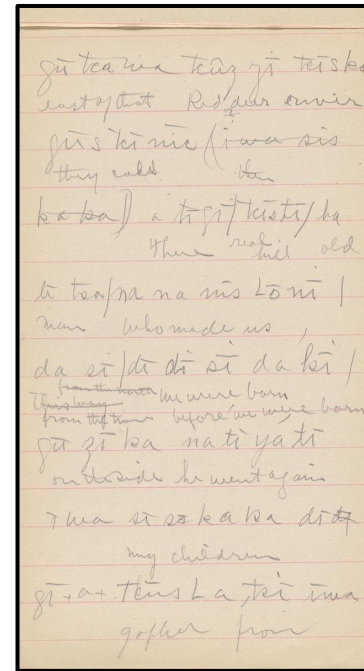
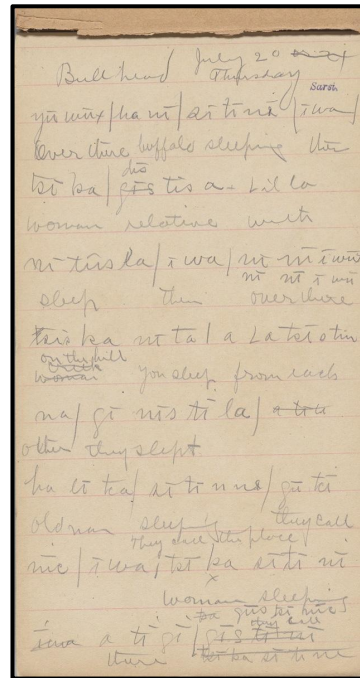
Hyacinth Users

Backend (input)

- Catalogers for digital collections and institutional repository
- Customer orders for digitization
- Marc record sync for items in Voyager ILS
- SWORD feeds for IR deposits and dissertations

Frontend (output)

- Academic Commons - institutional repository
- Digital Library Collections
- Special Collections custom sites
- DOI registration through DataCite



Notes on the language of the Tsuut'ina tribe. ca 1910

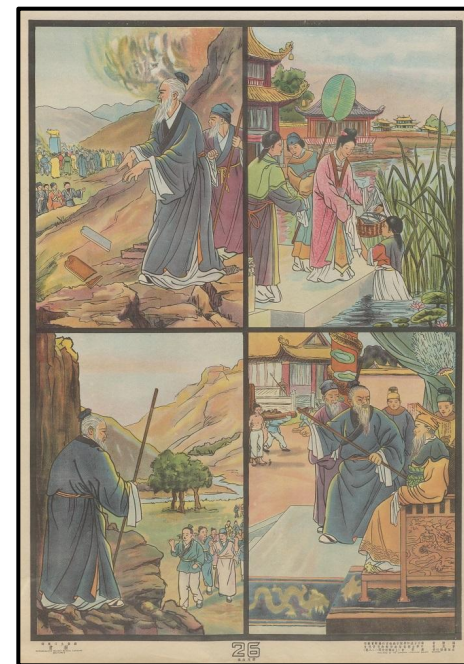
The Hyacinth User Group

Scope and Charge

A cross-divisional working group that will articulate the needs of diverse users, departments and collections is necessary to ensure collaboration, effectiveness, efficiency, transparency, and innovation in order for the system to continue to evolve.

The Hyacinth User Group

- designs, improves, and documents shared workflows.
- provides a hub for software support and issue tracking.
- facilitates communication between users and developers.
- selects controlled vocabularies.
- advises on metadata elements and schema mapping.
- manages shared projects, such as authority control, metadata cleanup, and user testing.
- recommends features for future development.



Chinese poster illustrating the story of Moses ca. 1932

Relatedness

Issue

- Linking related digital objects in Hyacinth

Stakeholders

- Cataloging/metadata staff
- Scholarly communications staff
- End users

Method

- Discussions at Hyacinth User Group
- Joint development of use cases and specifications (shared documents)

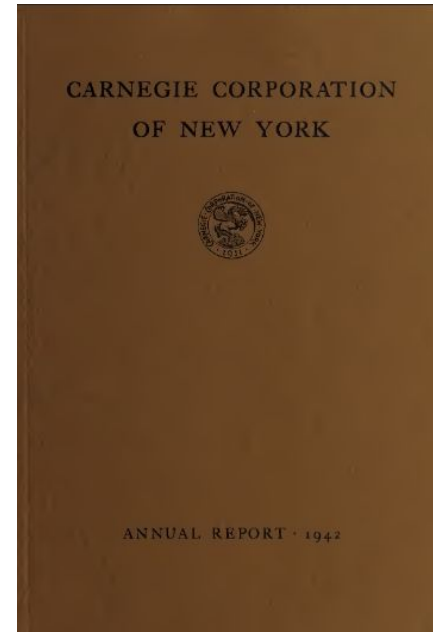


Fig.: Carnegie Corporation of New York. Report of the president, the secretary & the treasurer. 1942

Relatedness

Joint development of use cases and specifications: Challenges

- Incorporating all use cases into a MODS-based data model
- Deciding what to omit to prevent unnecessary bloat in the data model
- Determining preferred modeling when there are several possible ways to model

```
<relatedItem type="succeeding">
  <name>
    <namePart>Carnegie Museum</namePart>
  </name>
  <titleInfo>
    <title>Annual report of the Carnegie Museum</title>
  </titleInfo>
  <identifier type="issn">0161-5017</identifier>
</relatedItem>
```

Fig.: Target MODS output for a related item element, with a type “succeeding”

Relatedness

Joint development of use cases and specifications: Outcome

- A single complex relatedItem element with several subelements: type, title, name, part number, identifier, Columbia content

Related Item*=====	
Relation type	succeeding
Title	Annual report of the Carnegie Museum
Name	Carnegie Museum
Part Number	_____
Identifier* 0161-5017	ID Type [ISSN ▼]
Columbia Series?	<input type="checkbox"/>

Fig.: draft design of a data entry form for the element

Controlled Vocabularies

Controlled Vocabularies

[Add New Controlled Vocabulary](#)

Controlled Vocabularies

Registered Controlled Vocabularies

Collection	Edit	Manage Terms
Culture	Edit	Manage Terms
Form	Edit	Manage Terms
Frequency	Edit	Manage Terms
Funder	Edit	Manage Terms
Genre	Edit	Manage Terms
Geonames	Edit	Manage Terms
Language	Edit	Manage Terms
License	Edit	Manage Terms
Location	Edit	Manage Terms
Name	Edit	Manage Terms
Name Role	Edit	Manage Terms
Rights Statement	Edit	Manage Terms
Subject Geographic	Edit	Manage Terms
Subject Name	Edit	Manage Terms

Controlled Vocabularies

External

Source: id.loc.gov, FAST, AAT, Geonames, iso639-2b, Crossref Funder Registry, ISNI, etc.

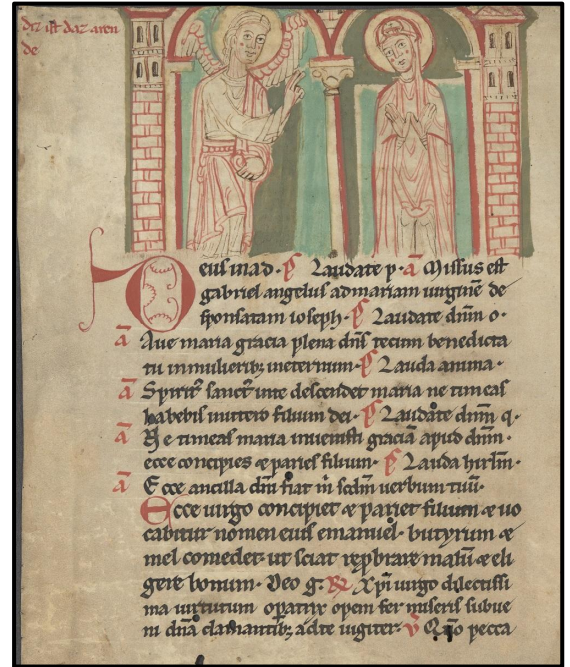
Used for: Agents, Culture, Form/Genre, Subjects, Languages, Rights Statements, Funder, Roles

Local

Used for: Collection (archival), Location (repository)

Temporary

Used for: Situation when a URI is coined during data ingest. The term could not be reconciled during metadata creation or when metadata is mapped over from another data store, such as the library catalog.



Breviary. 13th century

Example: Collections

[Hyacinth](#) [Digital Objects](#) [Projects](#) [Controlled Vocabularies](#) [Manage](#) ▾

« [Back to Controlled Vocabulary: Collection](#)

Local Term: Albert Field Collection of Playing Cards

Controlled Vocabulary	Collection
Type	local
Value	Albert Field Collection of Playing Cards
URI	http://id.library.columbia.edu/term/57155a98-0345-489f-bbe7-a7fc
Internal ID	55
CLIO ID	13484140

LIBRARY COLLECTION ▾	
> Herbert H. Lehman Papers	32,879
> Seymour B. Durst Old York Library Collection	15,288
> Carnegie Corporation of New York Records	9,598
> Biggart Collection of Architectural Vignettes on Commercial Stationery	1,916
> G.E.E. Lindquist Native American Collection	1,907
> Bob Fass papers, circa 1960-2011	1,763
> Joseph Urban Papers	1,495
> Community Service Society Records	1,350
> Dramatic Museum Realia	528
> Hubert H. Harrison Papers	319
> more »	

Hyacinth 3

Coming soon: **Hyacinth 3**

Who is a Hyacinth user?

- Granular admin permissions
- User specs on a field-by-field basis
- A space for documentation & training standards

The screenshot displays the Hyacinth 3 user management interface. At the top, a dark navigation bar contains the text 'Hyacinth Digital Objects Manage Admin' and 'Admin User'. Below this is a green header for 'Editing User: Test User' with a 'Back to All Users' link. The form includes fields for UID (dafac76-956b-4d60-9616-b13d3f247402), First Name (Test), Last Name (User), and Email (testuser@example.com). A note specifies that Columbia sign-in requires a Columbia email (uni@columbia.edu). There is an 'Is Active?' section with 'Yes' selected and a 'Deactivate' button, along with a 'Change Password' link. An 'Update' button is at the bottom right of the form. Below the form is the 'System Wide Permissions' section, which lists four permissions: Administrator (checked), Manage Vocabularies, Read All Digital Objects, Manage Users, and Manage All Digital Objects, each with a brief description of their capabilities. An 'Update' button is located at the bottom right of this section.

Future Developments

- Priority-setting after big projects
- Guard against over-specialization
- Clear and thorough documentation
- User assessment

Refine Your Search

Project



Tibetan Studies Special Collections at Columbia University **287**
Time Based Media **16456**



Hyacinth

Digital Objects

Controlled Vocabularies

Manage

Digital Objects

Keyword



Search terms...

Project > Time Based Media **x**

1 - 20 of 16456 results (0.023 seconds) • [Export Current Search to CSV](#)

First **1** 2 3 ... Last



References

Hyacinth: <https://github.com/cul/ldpd-hyacinth>

Digital Library Collections: <https://dlc.library.columbia.edu>

Academic Commons: <https://academiccommons.columbia.edu>

This presentation: <https://doi.org/10.7916/d8-2p4w-0t69>

Images from Columbia's collections, selected by Meredith Self



Copy of a mural in the Kataluva Purvarama Maha Viharaya temple, Sri Lanka. 1971