

Bovine *NK-lysin*: Copy number variation and functional diversification

Junfeng Chen^a, John Huddleston^{b,c}, Reuben M. Buckley^d, Maika Malig^b, Sara D. Lawhon^a, Loren C. Skow^e, Mi Ok Lee^a, Evan E. Eichler^{b,c}, Leif Andersson^{e,f,g}, and James E. Womack^{a,1}

^aDepartment of Veterinary Pathobiology, College of Veterinary Medicine, Texas A&M University, College Station, TX 77843; ^bDepartment of Genome Sciences, University of Washington, Seattle, WA 98195; ^cHoward Hughes Medical Institute, University of Washington, Seattle, WA 98195; ^dSchool of Biological Sciences, University of Adelaide, Adelaide 5005, Australia; ^eDepartment of Veterinary Integrative Biosciences, College of Veterinary Medicine, Texas A&M University, College Station, TX 77843; ^fDepartment of Medical Biochemistry and Microbiology, Uppsala University, Uppsala, SE 75123, Sweden; and ^gDepartment of Animal Breeding and Genetics, Swedish University of Agricultural Sciences, Uppsala, SE 75007, Sweden

Contributed by James E. Womack, November 20, 2015 (sent for review November 5, 2015; reviewed by Denis M. Larkin and Harris A. Lewin)

NK-lysin is an antimicrobial peptide and effector protein in the host innate immune system. It is coded by a single gene in humans and most other mammalian species. In this study, we provide evidence for the existence of four *NK-lysin* genes in a repetitive region on cattle chromosome 11. The *NK2A*, *NK2B*, and *NK2C* genes are tandemly arrayed as three copies in ~30–35-kb segments, located 41.8 kb upstream of *NK1*. All four genes are functional, albeit with differential tissue expression. *NK1*, *NK2A*, and *NK2B* exhibited the highest expression in intestine Peyer's patch, whereas *NK2C* was expressed almost exclusively in lung. The four peptide products were synthesized *ex vivo*, and their antimicrobial effects against both Gram-positive and Gram-negative bacteria were confirmed with a bacteria-killing assay. Transmission electron microscopy indicated that bovine *NK-lysins* exhibited their antimicrobial activities by lytic action in the cell membranes. In summary, the single *NK-lysin* gene in other mammals has expanded to a four-member gene family by tandem duplications in cattle; all four genes are transcribed, and the synthetic peptides corresponding to the core regions are biologically active and likely contribute to innate immunity in ruminants.

NK-lysin | antimicrobial peptides | gene family expansion | segmental duplication | copy number polymorphism

Antimicrobial peptides (AMPs) are effector molecules in the innate immune system and are widespread in all kingdoms of life (1, 2). Human granulysin (*GNLY*) and pig *NK-lysin* are orthologs and belong to the same group of AMPs (3, 4). They are secreted from the granules of cytotoxic T lymphocytes and natural killer (NK) cells and are active against a wide spectrum of microorganisms including Gram-positive and Gram-negative bacteria, fungi, protozoa, viruses, and even tumor cells (5–11). *NK-lysin* orthologs have been identified and characterized in many species, including human, pig, cattle, horse, water buffalo, and several species of birds (12–15). Bovine *NK-lysin* was first reported a decade ago (16), when two bovine cDNA fragments were obtained from each of four different cows. It was unclear whether the detected sequences, *Bo-lysin 89* and *Bo-lysin 62*, were from two different *NK-lysin* genes or were alleles of a single gene. Also, multiple variants of *NK-lysin* sequences exist in the bovine nucleotide database, suggesting the existence of more than one copy of *NK-lysin* in the cattle genome (Fig. S1 and Table S1).

Copy number variation (CNV) is a common form of structural variation in animal genomes. Several whole-genome CNV analyses have been carried out among different breeds of cattle, and two independent studies suggested that bovine *NK-lysin* is in a CNV region (17, 18). Duplications (>1 kb) that are highly identical (90%) are known as “segmental duplications.” Segmental duplications are common in mammalian genomes and are highly copy-number variable, serving as one of the principal mechanisms of gene family expansion (19) which can provide substrates for neofunctionalization and development (20, 21).

Sequencing of the cattle genome (22) revealed that multiple immune-related genes are expanded in copy number in cattle as

compared with humans and mice. These include genes coding AMPs such as the cathelicidins and β -defensins, members of the IFN gene family, C-type lysozyme, and lipopolysaccharide-binding protein (*ULBP*) (23–28). Expansion of these gene families potentially can give rise to new functional paralogs with implications in the unique gastric physiology of ruminants or in disease resistance in a herd environment. Here we demonstrate that there are four copies of *NK-lysin* in cattle; three related copies are located in tandem within ~30–35-kb regions of segmental duplication, whereas the fourth copy is located 41.8 kb downstream. All four genes show tissue-specific expression, and the product of each of the four genes displays antimicrobial activity against both Gram-positive and Gram-negative bacteria by the mechanisms of pore formation and cell lysis.

Results

Analysis of Cattle Homozygous at the *NK-Lysin* Locus. A search of the National Center for Biotechnology Information (NCBI) bovine nucleotide database identified seven different *NK-lysin*-related sequences (Table S1), and a phylogenetic analysis of the sequences showed four clades that potentially represented four different bovine *NK-lysin* genes. We designated these genes *NK1*, *NK2A*, *NK2B*, and *NK2C* (Fig. S1). *NK2A*, *NK2B*, and *NK2C* were closely related to each other and were divergent from *NK1*. The genes corresponding to *NK1* and *NK2A* have been annotated previously as *uncharacterized LOC616323* (gene ID:

Significance

The cattle genome contains expanded families of several genes involved in innate immunity. A single copy of the *NK-lysin* gene is annotated in the genomes of most mammals, including humans, but this study identified a family of *NK-lysin* genes in cattle consisting of four functional members. Although this family mirrors the numerical expansion of other immune-related genes, including interferons, defensins, and cathelicidins, in the cattle genome, we also see a diversification of function exhibited by differential tissue expression in the gene family. The current state of this site in the bovine genome appears to capture the evolutionary transition from copy number variation to the fixation of novel gene function within a segmentally duplicated region.

Author contributions: J.C., E.E.E., L.A., and J.E.W. designed research; J.C., J.H., R.M.B., and M.M. performed research; S.D.L. and L.C.S. contributed new reagents/analytic tools; J.C. and M.O.L. analyzed data; and J.C. wrote the paper.

Reviewers: D.M.L., Royal Veterinary College; and H.A.L., University of California, Davis.

The authors declare no conflict of interest.

Freely available online through the PNAS open access option.

Data deposition: The sequence reported in this article has been deposited in the National Center for Biotechnology Information database (accession no. [KT715031](https://www.ncbi.nlm.nih.gov/nuclot/KT715031)).

¹To whom correspondence should be addressed. Email: jwomack@cvm.tamu.edu.

This article contains supporting information online at www.pnas.org/lookup/suppl/doi:10.1073/pnas.1519374113/-DCSupplemental.

LOC616323) and *Bovine GNLV* (gene ID: 404173), respectively, in the bovine reference genome assembly UMD 3.1 of the University of California, Santa Cruz genome browser. These two genes are tandemly arranged on chromosome 11, whereas *NK2B* and *NK2C* are absent in the current genome assemblies. To confirm the authenticity of the *NK2A*, *NK2B*, and *NK2C* sequences, we designed a pair of primers (Bo-lysin F: Bo-lysin R) from the conserved region of these genes. To minimize the effects of allelic variation in the analysis, we selected four Holstein cattle homozygous for this region based on genome-wide association study genotyping results with the 770K HD SNP array (29). The SNP array contained 29 SNPs between the two genes flanking the *NK-lysin* region, *ATOH8* (gene ID: 616225) and *SFTPB* (gene ID: 507398). The PLINK program was used to identify individuals that were homozygous at all 29 SNP sites, and four cattle (2527, 2796, 2822, and 3850) with different haplotypes were selected for further analysis. The number of the sequenced clones and the different sequences achieved from each individual are listed in Table S2. In total, five different sequences (Seq1–5) were recovered from these four individuals. The five sequences formed three clades, corresponding to the *NK2A*, *NK2B*, and *NK2C* genes, and were divergent from *NK1* (Fig. 1). Three different arrangements of *NK-lysin* genes were observed in this study. Two sequences from the *NK2A* cluster were detected in individual 2527. If the individual 2527 was homozygous across the *NK-lysin* region, at least two copies of *NK2A* were present in this animal. Despite the large number of clones sequenced from both individuals 2822 and 3850, we found no *NK2B*-related clones, and we could not obtain *NK2B* amplicons with the *NK2B*-specific primer, suggesting the absence of the *NK2B* gene in these animals.

BAC Clone Sequencing Identified Four *NK-Lysin* Genes. The precise number of genes in the bovine *NK-lysin* family and their genomic organization were determined by sequencing two overlapping BAC clones covering the *NK-lysin* region. The clones were isolated from the CHORI-240 Bovine BAC Library and were sequenced with P4/C2 chemistry on the PacBio RS. Despite a sequencing coverage depth of >700× for both BACs after the first round of sequencing, each BAC was assembled into six contigs because of the presence of highly repetitive sequences. After a second round of sequencing, the average coverage was increased to ~1,310–1,551×; however, three contigs were still generated from CH240-372P1, and two contigs were generated from CH240-27G22. Because these two BAC clones overlap, we were able to

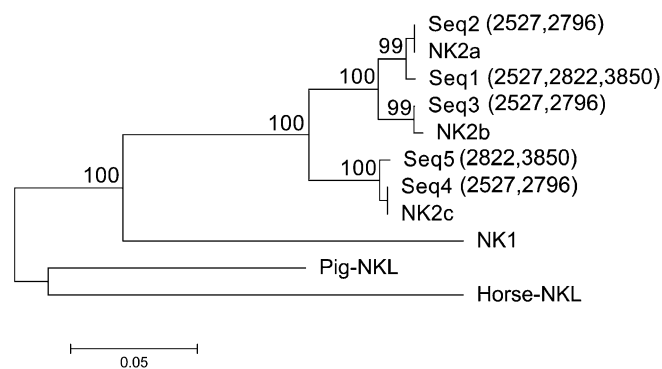


Fig. 1. *NK2A*, *NK2B*, and *NK2C* nucleotide sequence analysis in four homozygous individuals (2527, 2796, 2822, and 3850). Five different clone sequences (Seq. 1–5) from four individuals were phylogenetically analyzed with four bovine *NK-lysin* reference sequences (*NK1*, *NK2A*, *NK2B*, and *NK2C*) and corresponding pig (Pig-NKL) and horse (Horse-NKL) orthologs by the MEGA 6.0. Bootstrap values are shown at branch points.

perform a final de novo assembly of all sequencing data. This analysis produced a two-contig assembly in which the two contigs overlapped by ~2 kb at 100% identity. These two contigs subsequently were joined into a single contig, resulting in a linear supercontig of 227,063 bp covering the whole bovine *NK-lysin* region. Overall, the assembled contig (Bo-NK) was longer than the current genome assembly by ~38 kb, where the corresponding reference sequence was 189,124 bp (Bos taurus UMD_3.1 Chr. 11: 48,986,139–49,175,262 bp). The difference in length was caused primarily by misassemblies in the reference genome, in which repetitive regions containing the *NK2B* and *NK2C* genes were collapsed (Fig. 2A).

Dot plot analysis of the Bo-NK contig against itself revealed three segmental duplications with ~95% sequence identity (SD-NK2A: 62.1–97.1 kb; SD-NK2B: 97.1–130.1 kb; and SD-NK2C: 130.1–160.3 kb), each containing one *NK-lysin* gene; *NK1* was 41.8 kb downstream from the *NK2C* gene (Fig. 2B). Because the SD-NK2C lacked the right end of the duplicated fragment and was shorter than SD-NK2A and SD-NK2B, the flanking sequence of junction point 4 (JP-4) was different from the other three breakpoints (JP-1, JP-2, and JP-3) (Fig. 2C). To confirm the accuracy of the Bo-NK contig, we tested four primer pairs at each junction point using genomic DNA of L1 Domino 99375 (donor for the CHORI-240 Bovine BAC Library). Sanger sequencing showed that JP-1, JP-3, and JP-4 PCR products were perfectly aligned with the Bo-NK contig, but there were six mismatches out of 567 nucleotides between the JP-2 PCR product and the Bo-NK contig. The amplicon of another primer pair (BP-1) was sequenced by Sanger to determine whether these six mismatches were the result of an error in the PacBio sequencing. Sanger sequencing verified six sequencing errors at the BP-NK12 breakpoint in the Bo-NK contig. The Bo-NK contig therefore represented the correct assembly of the bovine *NK-lysin* region and demonstrated that four *NK-lysin* genes are located in this region on cattle chromosome 11. Complete genomic sequences of four *NK-lysin* genes were compared with determine genetic organization and structure (Fig. S2). All four bovine *NK-lysin* genes contain five exons, as is consistent with the architecture of human and pig orthologs. The exon sizes were comparable among the four genes, but the introns of *NK1* were larger than the introns from the other genes, accounting for the larger genomic size of *NK1* (Fig. S2A). *NK2A*, *NK2B*, and *NK2C* are about 95% identical to each other but are only 85% identical to *NK1*. The predicted amino acid compositions of the four bovine *NK-lysins* show high sequence identity and include six cysteine residues, which are conserved among *NK-lysin* molecules in other animals (Fig. S2B). Phylogenetic analysis of the full coding sequences of the four bovine *NK-lysins* with *NK-lysin* orthologs in humans, pig, horse, sheep, and goat revealed that the expansion of the *NK-lysin* gene family is seen only in the ruminants, suggesting the divergence of the *NK1* and *NK2* cluster in the ancestor of cattle, sheep, and goats (Fig. S3).

Analysis of Repetitive Sequences Within the Bovine *NK-Lysin* Gene Family. Repetitive sequences usually are associated with recombination hotspots in the human genome (30), and chromosomal instability caused by mispairing between such repeats at breakpoints is responsible for several diseases (31, 32). To gain more insight into the mechanism of *NK-lysin* expansion in cattle, we analyzed the distribution of repeat elements within this region. The distributions of different repeat classes within the assembled contig are shown in Fig. 3A and are summarized in Table S3. Overall, the downstream region of each breakpoint is more repetitive than the upstream region, and the flanking sequences of *NK1* are highly repetitive, consisting of a large percentage of long, interspersed nuclear elements (LINES), which is distinct from the rest of the region within this gene family. Several repeat families are overrepresented within the *NK-lysin*

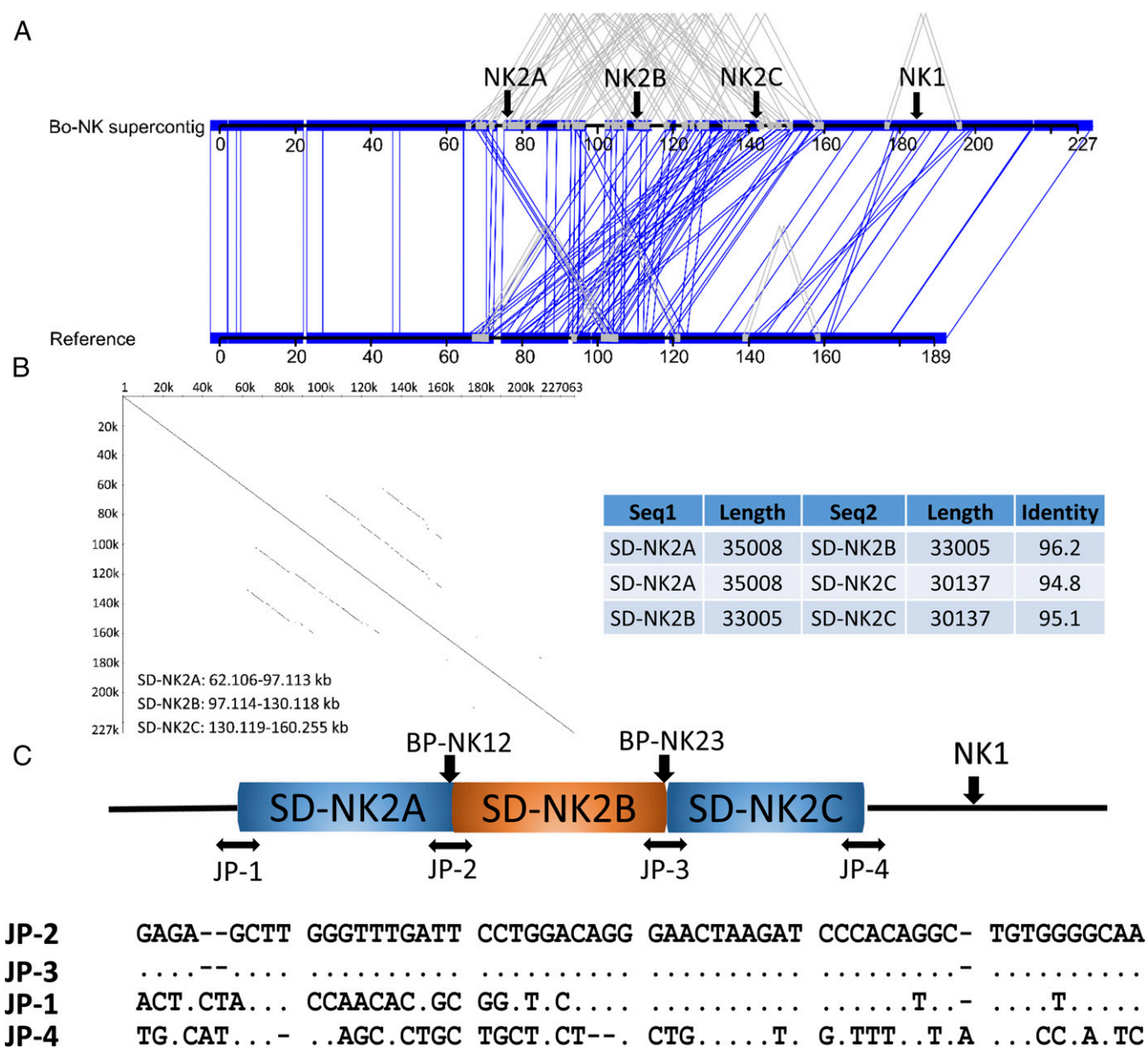


Fig. 2. BAC clone analysis by PacBio sequencing. (A) Sequence comparison between the Bo-NK supercontig and the genome assembly (*Bos_taurus_UMD_3.1.1*). Mismatches (vertical blue lines), internal duplications (gray boxes), and four *NK-lysin* gene loci (arrows) are indicated. (B) Dot plot analysis of the Bo-NK supercontig against itself. (C) Genomic organization of the bovine *NK-lysin* gene family and identified breakpoints (BP). The flanking sequence of JP-2 was used as the reference sequence.

region, including two ancient mammalian L1 families, two LTR families, and four ruminant/bovine-specific short, interspersed nuclear element (SINE) families (BOVTA, BTALUL2, CHR-2_BT, and CHR-2A) (Fig. S4). Because of the enrichment of SINES around junction points, we plotted the distribution of several ruminant/bovine-specific repeat families within 5 kb upstream and downstream of each junction point (Fig. 3B). The adjacent downstream regions of JP-1, JP-2, and JP-3 are enriched with SINES, especially the BOVTA element. BOVTA elements form a bovine-specific repeat family analogous to the primate ALU repeat family, which usually is associated with segmental duplications in humans (33). These results demonstrate that the fragments flanking breakpoints share high homology and could contribute to unequal crossover during meiosis and structural instability within the bovine *NK-lysin* gene family.

Tissue Expression of the Bovine *NK-Lysin* Genes. To test whether all the identified bovine *NK-lysin* genes are expressed and display the same expression profile, we compared the mRNA levels of each gene among five tissues, including lung, thymus, spleen, respiratory lymph node (RLN), and intestine Peyer's patch (IPP). Real-time PCR analysis demonstrated that all four bovine *NK-lysin* genes are expressed, but each exhibits a tissue-specific expression profile (Fig. 4). *NK1* and *NK2A* genes are highly expressed in the IPP but are expressed at extremely low levels in the lung. The difference was greater than 100-fold. *NK2B* is more generally expressed, with highest levels in the IPP and lung. A distinct expression pattern was observed for *NK2C*, which was expressed at highest level in the lung, indicating a potential novel function.

Antimicrobial Effects of Bovine *NK-Lysin* Peptides. Antimicrobial capacities of synthetic forms of four bovine *NK-lysin* peptides

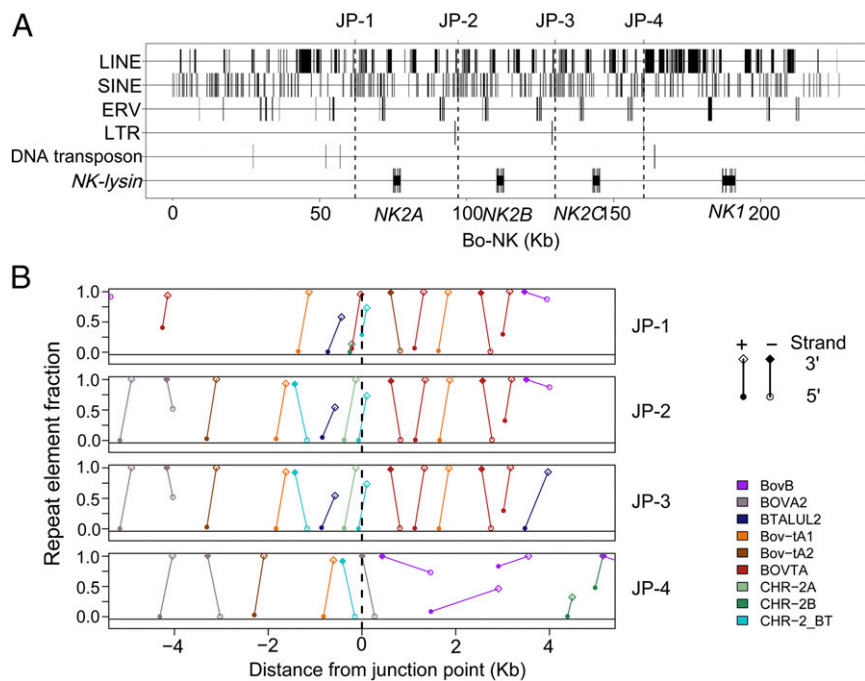


Fig. 3. Repeat element analysis. (A) Distribution of repeat classes within the assembled supercontig Bo-NK. Four junction points and genes are indicated. (B) Distribution of SINEs within 5 kb upstream and downstream of each junction point. The portion of each element relative to its consensus sequence is shown on the y axis.

were tested against both the Gram-positive bacteria *Staphylococcus aureus* and the Gram-negative bacteria *Escherichia coli*. All peptides were effective against both bacterial strains at nanomolar concentrations, although Gram-negative *E. coli* was more susceptible (Fig. 5A). At the lowest concentration of 0.05 μM , an ~ 10 -fold decrease in viable *E. coli* cells was observed, and bacterial numbers were reduced from initial 10^6 cfu/mL to less than 10^4 cfu/mL after incubation with 1 μM of *NK2A*, *NK2B*, or

NK2C molecules for 2 h. Even fewer cells (400 cfu/mL) survived incubation with 1 μM *NK1* peptide. All peptides were less active against the Gram-positive *S. aureus*. Bacterial numbers were not reduced significantly when incubated at peptide concentrations up to 0.1 μM for any of the four peptides. At 0.5 μM , all peptides produced ~ 10 -fold cell loss. At the concentration of 1 μM , the *NK1* molecule was stronger than the other three peptides and reduced *S. aureus* numbers by ~ 100 -fold. Although the peptides differed in their ability to kill Gram-positive and Gram-negative bacterial strains, the *NK1* peptide showed strongest antimicrobial effects against both strains. Despite having a less-positive charge, the *NK1* peptide is more hydrophobic than the other three peptides (Table S4), perhaps explaining its stronger antimicrobial effects against the tested bacterial strains.

The effects of bovine *NK-lysin* molecules on the *E. coli* cell membrane were investigated by transmission electron microscopy (TEM) (Fig. 5B). Specifically, the membrane integrity and intracellular structure of untreated *E. coli* cells and cells treated with 5 μM *NK1* peptide were compared and analyzed. The observed differences in the membrane ultrastructure caused by treatment with *NK1* peptide were obvious. Most of the untreated cells maintained a normal cell shape with an intact cytoplasmic membrane and full cytoplasmic contents (Fig. 5B, a), whereas treated cells had characteristic expansion of the periplasmic space with shrinkage of the cytoplasmic compartment (Fig. 5B, b). The cytoplasm of treated cells was less electron dense, with clear zones, indicating the disruption of the cell membranes and leakage of intracellular contents. Protruding bubbles were observed from the membrane of treated cells (Fig. 5B, d) whereas outer membranes of untreated cells displayed a uniform appearance with slightly wavy membranes (Fig. 5B, c). Statistical analysis confirmed that the average electron density of untreated cells was significantly ($P < 0.001$) stronger than the treated ones (Fig. 5B, e). The results from this assay demonstrated the lytic action of bovine *NK-lysin* peptides, which may directly cause pore formation in the cell membrane.

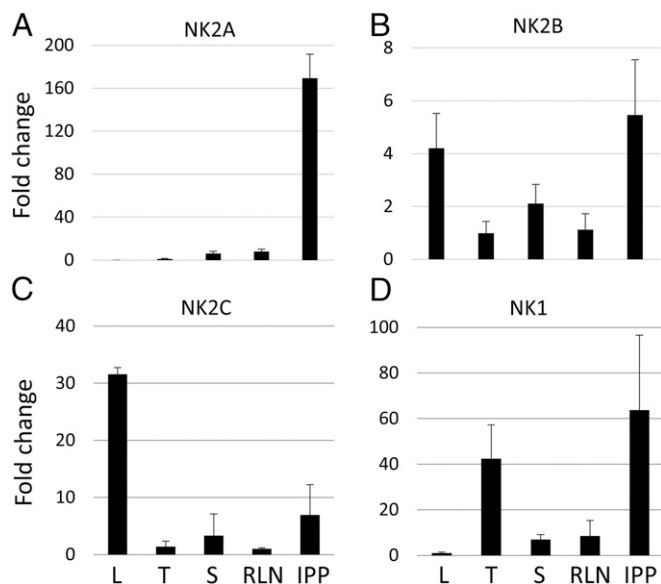


Fig. 4. Expression of four bovine *NK-lysin* genes in lung (L), thymus (T), spleen (S), RLN, and IPP. The expression of each gene in the tissue that exhibited the lowest expression level was assumed to be 1. The average expression levels and SDs were calculated from three healthy individuals. (A) *NK2A*. (B) *NK2B*. (C) *NK2C*. (D) *NK1*.

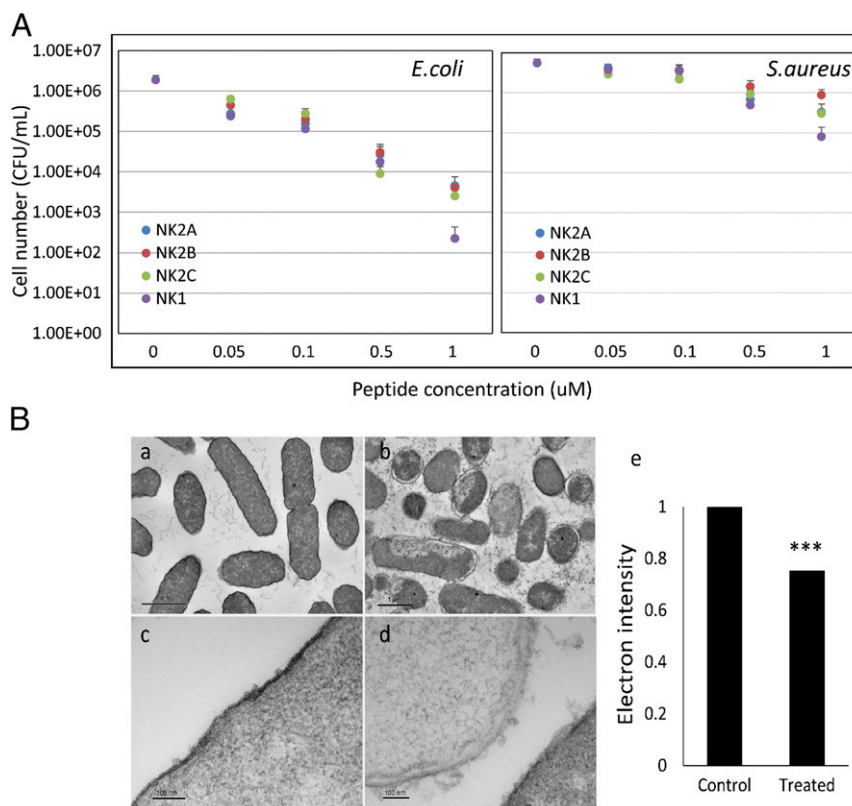


Fig. 5. (A) Antimicrobial activities of four bovine *NK-lysin* peptides against Gram-negative *E. coli* and Gram-positive *S. aureus*. Cell viability was analyzed by comparing the surviving cells after peptide treatment with the control cells. Error bars represented the SDs calculated from four biological replications. (B) Transmission electron micrographs of *E. coli* cells with and without 5 μ M *NK1* peptide treatment. (a and c) Control cells. (b and d) Cells treated with 5 μ M *NK1* peptide for 20 min. (e) Comparison of the average electron intensity of 30 cells in the control and *NK1*-treated cell groups.

Discussion

In this study, we provide evidence for tandem duplications of three *NK-lysin* genes, likely derived from an ancestral fourth copy located ~41.8 kb downstream on cattle chromosome 11. Conserved features of *NK-lysin* orthologs, including the presence of five exons/four introns, six well-conserved cysteine residues, and a high proportion of positively charged amino acids, exist in all four bovine *NK-lysin* genes. The genome context flanking the bovine *NK-lysin* gene family demonstrated conserved synteny with the *granulysin* region of human and most other mammalian genomes. The human *granulysin* gene maps to chromosome 2 centromeric to *SFTP*B (surfactant protein B) and *USP39* (ubiquitin-specific peptidase 39) and telomeric to *ATO*H8 (atonal homolog 8) and *ST3GAL5* (ST3 β -galactoside α -2,3-sialyltransferase 5). Similarly, the bovine *NK-lysin* gene family maps centromeric to *SFTP*B and *USP39* and telomeric to *ATO*H8 and *ST3GAL5* on chromosome 11. The conserved genome context implies that no major interchromosomal genomic reorganization has occurred in this region since the divergence of the ancestors of cattle and humans.

The arrangement of *NK2A*, *NK2B*, and *NK2C* as head-to-tail tandem triplicates is consistent with the predominate duplication pattern observed in cattle and other mammals including mouse, rat, and dog and is in contrast to the archetypical organization of interspersed duplications in higher primates (34–39). Segmental duplication with subsequent differentiation is the major mechanism of gene family expansion. Acting as the substrates of genome evolution, regions of segmental duplication also are particularly unstable and are hotspots of CNV (37, 38, 40–42). Our analysis of homozygous Holstein cattle revealed copy number polymorphism of *NK2B* and potential copy number polymorphism of *NK2A* in

contrast to the BAC sequence contributed by a Hereford bull. We then investigated the features of sequences flanking each breakpoint and found that the fragments downstream of each breakpoint were highly repetitive. These highly repetitive regions share high sequence homology and potentially drive rearrangements among the genetic elements flanked by these repeats; these rearrangements can result in deletions or duplications of genomic fragments. Therefore further studies are suggested to investigate the extent of CNV within and between breeds of cattle in all four bovine *NK-lysin*s and haplotype structures within this gene family.

In contrast to the single copy of *NK-lysin* gene in most species including human, pig, chicken, and horse, four *NK-lysin* genes cluster in a region with highly repetitive sequences in the cattle genome. To our knowledge, cattle are the first mammals in which multiple *NK-lysin* genes have been found, and this observation is consistent with the gene family expansions in cattle for several other genes related to innate host immunity, such as the defensins, cathelicidins, and interferons (23–25, 27). Perhaps reflecting an evolutionary strategy to deal with the substantial number of pathogens and the increased risk of infections in the rumen of cattle, the enlarged gene families encoding the AMPs may be selected to meet an increased demand (22). It has been reported that some duplicates of an immunity-related gene exhibit nonimmune functions in cattle, such as the roles of the lysozyme genes in both the immune and digestive systems (22). Although *NK-lysin* orthologs are predominately expressed in the IPP in most species, the bovine *NK2C* gene is expressed at the highest level in lung, implying a potential novel function in the bovine respiratory system.

Bacteria-killing assays revealed that the synthetic peptides from the functional regions of four bovine *NK-lysin* genes are active against both Gram-positive and Gram-negative bacterial strains at

the very low concentration of 0.05 μM . Therefore we provided four potential candidate templates for the development of new anti-bacterial drugs. However, the size of a peptide is of utmost importance in determining whether it is a feasible antimicrobial drug, and the bovine *NK-lysin* molecules in this study covered the whole functional region of helices 2 and 3 in the genes, which consisted of 30 residues. Further studies are necessary to determine the activities of shortened bovine *NK-lysin* peptides.

Materials and Methods

Analysis of Homozygous Animals. All identified *NK-lysin*-related sequences from the NCBI bovine nucleotide database were subjected to phylogenetic analysis by ClustalW. Primer 3 was used to design a pair of primers (Bo-lysin) within the conserved region of the *NK2A*, *NK2B*, and *NK2C* clusters (Table S5). Four Holstein cattle which were homozygous at all SNP sites across the entire *NK-lysin* region, based on genotyping with the bovine 770K HD SNP array (29), were used in this analysis. The Bo-lysin amplicons from each of the four homozygotes were cloned into the pCR4 Blunt-TOPO vector (Life Technologies) for sequencing (Beckman Coulter Genomics). Only sequences present at least three times among the clones from a single individual were used for analysis. All sequences were analyzed phylogenetically with the corresponding reference sequences of *NK1* and *NK2A-C* by MEGA 6.0 (43); pig and horse *NK-lysin* sequences were included as outgroups. The absence of *NK2B* in individuals 2822 and 3850 were confirmed further by PCR with *NK2B*-specific primers (Gs-NK2B).

BAC Clone Sequencing. Two overlapping BAC clones were selected from the CHORI-240 Bovine BAC Library, and confirmation of *NK-lysin* inclusion was conducted with the Bo-lysin primers. BAC sequencing was carried out with single-molecule real-time (SMRT) sequencing technology (Pacific Biosciences), as described previously (44). Each clone was sequenced twice in two separate SMRT cells. De novo assembly of the data from each SMRT cell and from the combined two SMRT cells from each clone was performed following the standard SMRT Analysis (v. 2.0.1) pipeline. A further de novo assembly was attempted using combined data from all four SMRT cells, and the final contigs were joined into a single supercontig using Sequencher (Gene Codes Corporation). The supercontig then was compared with the reference sequence using the miropeats alignment in Parasight (45), and further dot plot analysis of the supercontig was implemented by UniproUGENE (46, 47). Four pairs of primers specific for each putative junction point (JP-1, JP-2, JP-3, and JP-4) were tested in the genomic DNA of L1 Domino 99375 to validate the BAC assembly.

Repeat Element Analysis. Repeat elements within the Bo-NK supercontig and the UMD_3.1.1 assembly were identified and annotated using CENSOR with a bovine-specific library downloaded from Repbase that included ancestral sequences (48, 49). To estimate the density of each repeat family within the whole-genome assembly (UMD_3.1.1), the assembled chromosomes were broken into different bins of the same size as the Bo-NK contig (~227 kb), and those consisting of >10% gaps were excluded from the analysis. Repeat density for each repeat family with more than five copies in a bin was represented by the repeat coverage per 1,000 bp. Ambiguous repeat elements

at boundaries were assigned to bins based on a minimum 50% repeat length overlap threshold. Overlaps between repeats and bins were identified using the GenomicRanges package from Bioconductor (50, 51). Repeat densities across all bins were used to estimate the empirical cumulative distribution function of each repeat family using the "ecdf" command in R and Bioconductor (52), which then was used to estimate the probability of sampling a bin with a repeat density greater than the repeat density of the Bo-NK supercontig [$P(X > x)$]. A repeat family was overrepresented in the Bo-NK supercontig if $P(X > x)$ was <0.05. Finally, repeat annotation plots were generated using the base graphics system in R (52).

Expression Profiles. Total RNA was extracted from the IPP, lung, thymus, spleen, and RLN of three mixed-breed cattle using the RNeasy Mini kit (Qiagen). RNA then was reverse transcribed into cDNA with a SuperScript II Reverse Transcriptase kit (Invitrogen). Specific Taqman-MGB probes and primers for each gene were designed using Primer Express v.2 (Applied Biosystems) and Primer3. Quantitative PCR was performed in triplicate reactions. The mean threshold cycle value (Ct) of each sample was normalized to the internal control, GAPDH, and the expression profile for each gene was obtained by comparing its normalized Ct value with the calibrator sample in which the gene exhibited the lowest expression level.

Bacteria-Killing Assay. Overnight cultures of Gram-positive *S. aureus* (ATCC 25923) and Gram-negative *E. coli* (ATCC 25922) grown in lysogeny broth (LB) at 37 °C with aeration were subcultured to fresh LB at a ratio of 1:50 and were grown at 37 °C with aeration for another 2.5 h to midexponential phase, washed, and resuspended in potassium phosphate buffer (10 mM, pH 7.4) to a concentration of 3×10^6 cfu/mL. An aliquot of 110 μL of prepared bacterial cells was incubated with 10 μL buffer or buffer plus peptides at working concentrations of 0.05, 0.1, 0.5, and 1 μM at 37 °C for 2 h and then was plated onto LB agar plates. Colonies of the surviving bacteria were counted manually after overnight incubation at 37 °C.

TEM. One hundred ten microliters of *E. coli* cells (ATCC 25922) (3×10^8 cfu/mL) were incubated with 10 μL buffer or 5 μM *NK1* peptide at 37 °C for 20 min. Cells were fixed with equal volume of 2.5% glutaraldehyde at room temperature for 2 h and then were washed and placed in 0.1 M sodium cacodylate buffer. The fixed cells were postfixed in 1% OsO₄ with 1% K₄[Fe(CN)₆] for 1 h at 4 °C, rinsed with 0.1 M sodium cacodylate buffer followed by dehydration in an ascending ethanol gradient (50, 70, 80, 90, 95, and 100%), and embedded in epoxy resin. Ultrathin sections were obtained with a Leica EM UC6 Ultramicrotome, were poststained with uranyl acetate and lead citrate, and were examined with a Morgagni 268 transmission electron microscope (FEI). Additional image analyses were performed with ImageJ (53). Statistical analysis of the mean electron intensities of 30 cells from both the control and *NK1*-treated groups was performed with Student *t*-test (paired, two-tailed, unequal variances).

ACKNOWLEDGMENTS. We thank Harold Payne for providing assistance and advice on TEM analysis and David L. Adelson for his suggestions on repeat element analysis. This research was supported by Agriculture and Food Research Initiative Competitive Grant 2011-68004-30367 from the US Department of Agriculture National Institute of Food and Agriculture.

- Zaslloff M (2002) Antimicrobial peptides of multicellular organisms. *Nature* 415(6870):389–395.
- Hancock RE, Diamond G (2000) The role of cationic antimicrobial peptides in innate host defences. *Trends Microbiol* 8(9):402–410.
- Peña SV, Hanson DA, Carr BA, Goralski TJ, Krensky AM (1997) Processing, subcellular localization, and function of 519 (granulysin), a human late T cell activation molecule with homology to small, lytic, granule proteins. *J Immunol* 158(6):2680–2688.
- Andersson M, et al. (1995) NK-lysin, a novel effector peptide of cytotoxic T and NK cells. Structure and cDNA cloning of the porcine form, induction by interleukin 2, antibacterial and antitumour activity. *EMBO J* 14(8):1615–1625.
- Stenger S, et al. (1998) An antimicrobial activity of cytolytic T cells mediated by granulysin. *Science* 282(5386):121–125.
- Dieli F, et al. (2001) Granulysin-dependent killing of intracellular and extracellular Mycobacterium tuberculosis by Vgamma9/Vdelta2 T lymphocytes. *J Infect Dis* 184(8):1082–1085.
- Gansert JL, et al. (2003) Human NKT cells express granulysin and exhibit antimycobacterial activity. *J Immunol* 170(6):3154–3161.
- Ernst WA, et al. (2000) Granulysin, a T cell product, kills bacteria by altering membrane permeability. *J Immunol* 165(12):7102–7108.
- Jacobs T, Bruhn H, Gaworski I, Fleischer B, Leippe M (2003) NK-lysin and its shortened analog NK-2 exhibit potent activities against Trypanosoma cruzi. *Antimicrob Agents Chemother* 47(2):607–613.
- Wang Z, et al. (2000) Bactericidal and tumoricidal activities of synthetic peptides derived from granulysin. *J Immunol* 165(3):1486–1490.
- Hata A, et al. (2001) Granulysin blocks replication of varicella-zoster virus and triggers apoptosis of infected cells. *Viral Immunol* 14(2):125–133.
- Hong YH, et al. (2006) Molecular cloning and characterization of chicken NK-lysin. *Vet Immunol Immunopathol* 110(3-4):339–347.
- Davis EG, Sang Y, Rush B, Zhang G, Blecha F (2005) Molecular cloning and characterization of equine NK-lysin. *Vet Immunol Immunopathol* 105(1-2):163–169.
- Kandasamy S, Mitra A (2009) Characterization and expression profile of complete functional domain of granulysin/NK-lysin homologue (buffalo-lysin) gene of water buffalo (Bubalus bubalis). *Vet Immunol Immunopathol* 128(4):413–417.
- Wang Q, Bao B, Wang Y, Peatman E, Liu Z (2006) Characterization of a NK-lysin antimicrobial peptide gene from channel catfish. *Fish Shellfish Immunol* 20(3):419–426.
- Endsley JJ, et al. (2004) Characterization of bovine homologues of granulysin and NK-lysin. *J Immunol* 173(4):2607–2614.
- Bickhart DM, et al. (2012) Copy number variation of individual cattle genomes using next-generation sequencing. *Genome Res* 22(4):778–790.
- Liu GE, et al. (2010) Analysis of copy number variations among diverse cattle breeds. *Genome Res* 20(5):693–703.
- Korbel JO, et al. (2008) The current excitement about copy number variation: How it relates to gene duplications and protein families. *Curr Opin Struct Biol* 18(3):366–374.
- Behr MJ, Snoko DW (2004) Simulating evolution by gene duplication of protein features that require multiple amino acid residues. *Protein Sci* 13(10):2651–2664.
- Ohta T (1989) Role of gene duplication in evolution. *Genome* 31(1):304–310.

22. Elisk CG, et al.; Bovine Genome Sequencing and Analysis Consortium (2009) The genome sequence of taurine cattle: A window to ruminant biology and evolution. *Science* 324(5926):522–528.
23. Meade KG, Cormican P, Narciandi F, Lloyd A, O'Farrelly C (2014) Bovine β -defensin gene family: Opportunities to improve animal health? *Physiol Genomics* 46(1):17–28.
24. Scocchi M, Wang S, Zanetti M (1997) Structural organization of the bovine cathelicidin gene family and identification of a novel member. *FEBS Lett* 417(3):311–315.
25. Zanetti M (2004) Cathelicidins, multifunctional peptides of the innate immunity. *J Leukoc Biol* 75(1):39–48.
26. Larson JH, Marron BM, Beever JE, Roe BA, Lewin HA (2006) Genomic organization and evolution of the ULBP genes in cattle. *BMC Genomics* 7:227.
27. Walker AM, Roberts RM (2009) Characterization of the bovine type I IFN locus: Rearrangements, expansions, and novel subfamilies. *BMC Genomics* 10:187.
28. Irwin DM, Biegel JM, Stewart CB (2011) Evolution of the mammalian lysozyme gene family. *BMC Evol Biol* 11:166.
29. Neibergs HL, et al.; Bovine Respiratory Disease Complex Coordinated Agricultural Project Research Team (2014) Susceptibility loci revealed for bovine respiratory disease complex in pre-weaned holstein calves. *BMC Genomics* 15(1):1164.
30. McVean G (2010) What drives recombination hotspots to repeat DNA in humans? *Philos Trans R Soc Lond B Biol Sci* 365(1544):1213–1218.
31. Stoppa-Lyonnet D, et al. (1991) Recombinational biases in the rearranged C1-inhibitor genes of hereditary angioedema patients. *Am J Hum Genet* 49(5):1055–1062.
32. Lehrman MA, et al. (1985) Mutation in LDL receptor: Alu-Alu recombination deletes exons encoding transmembrane and cytoplasmic domains. *Science* 227(4683):140–146.
33. Bailey JA, Liu G, Eichler EE (2003) An Alu transposition model for the origin and expansion of human segmental duplications. *Am J Hum Genet* 73(4):823–834.
34. Bailey JA, et al. (2002) Recent segmental duplications in the human genome. *Science* 297(5583):1003–1007.
35. Cheng Z, et al. (2005) A genome-wide comparison of recent chimpanzee and human segmental duplications. *Nature* 437(7055):88–93.
36. Tuzun E, Bailey JA, Eichler EE (2004) Recent segmental duplications in the working draft assembly of the brown Norway rat. *Genome Res* 14(4):493–506.
37. She X, Cheng Z, Zöllner S, Church DM, Eichler EE (2008) Mouse segmental duplication and copy number variation. *Nat Genet* 40(7):909–914.
38. Nicholas TJ, et al. (2009) The genomic architecture of segmental duplications and associated copy number variants in dogs. *Genome Res* 19(3):491–499.
39. Liu GE, et al. (2009) Analysis of recent segmental duplications in the bovine genome. *BMC Genomics* 10:571.
40. Sharp AJ, et al. (2005) Segmental duplications and copy-number variation in the human genome. *Am J Hum Genet* 77(1):78–88.
41. Graubert TA, et al. (2007) A high-resolution map of segmental DNA copy number variation in the mouse genome. *PLoS Genet* 3(1):e3.
42. Redon R, et al. (2006) Global variation in copy number in the human genome. *Nature* 444(7118):444–454.
43. Tamura K, Stecher G, Peterson D, Filipski A, Kumar S (2013) MEGA6: Molecular evolutionary genetics analysis version 6.0. *Mol Biol Evol* 30(12):2725–2729.
44. Huddleston J, et al. (2014) Reconstructing complex regions of genomes using long-read sequencing technology. *Genome Res* 24(4):688–696.
45. Parsons JD (1995) Miropeats: Graphical DNA sequence comparisons. *Comput Appl Biosci* 11(6):615–619.
46. Golosova O, et al. (2014) Unipro UGENE NGS pipelines and components for variant calling, RNA-seq and ChIP-seq data analyses. *PeerJ* 2:e644.
47. Okonechnikov K, Golosova O, Fursov M; UGENE team (2012) Unipro UGENE: A unified bioinformatics toolkit. *Bioinformatics* 28(8):1166–1167.
48. Bao W, Kojima KK, Kohany O (2015) Repbase update, a database of repetitive elements in eukaryotic genomes. *Mob DNA* 6:11.
49. Kohany O, Gentles AJ, Hankus L, Jurka J (2006) Annotation, submission and screening of repetitive elements in Repbase: RepbaseSubmitter and Censor. *BMC Bioinformatics* 7:474.
50. Lawrence M, et al. (2013) Software for computing and annotating genomic ranges. *PLOS Comput Biol* 9(8):e1003118.
51. Gentleman RC, et al. (2004) Bioconductor: Open software development for computational biology and bioinformatics. *Genome Biol* 5(10):R80.
52. R Core Team (2015) *R: A Language and Environment for Statistical Computing* (R Foundation for Statistical Computing, Vienna).
53. Schneider CA, Rasband WS, Eliceiri KW (2012) NIH Image to ImageJ: 25 years of image analysis. *Nat Methods* 9(7):671–675.