

# ATL

---

Volume 1 | Number 1

Article 8

---


February 2016

## Tata Fu

Seni Dara

*Benin*

Follow this and additional works at: <https://digitalcommons.kennesaw.edu/atl>

 Part of the [African Languages and Societies Commons](#), [African Studies Commons](#), and the [Urban, Community and Regional Planning Commons](#)

---

### Recommended Citation

Dara, Seni (2016) "Tata Fu," *ATL*: Vol. 1 : No. 1 , Article 8.

Available at: <https://digitalcommons.kennesaw.edu/atl/vol1/iss1/8>

This Article is brought to you for free and open access by DigitalCommons@Kennesaw State University. It has been accepted for inclusion in ATL by an authorized editor of DigitalCommons@Kennesaw State University. For more information, please contact [digitalcommons@kennesaw.edu](mailto:digitalcommons@kennesaw.edu).

# TATA FU

by Seni Dara  
Architect | Benin

**3RD PLACE WINNER**  
Inspired by the cultures of Togo and Benin



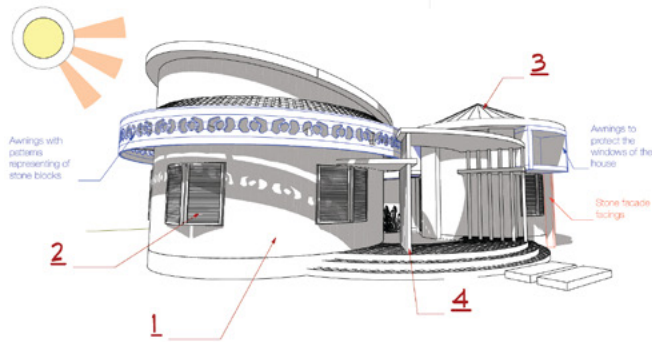
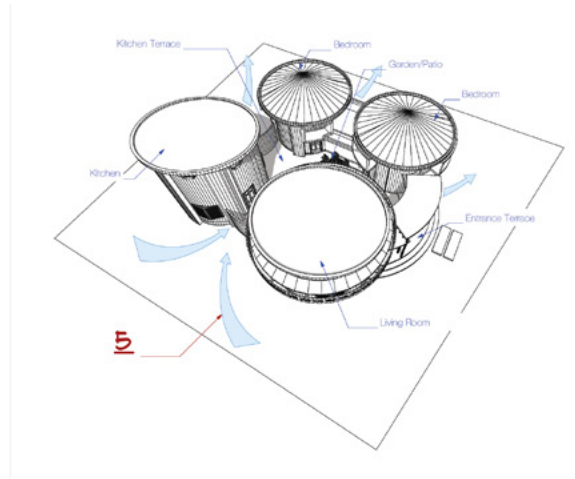
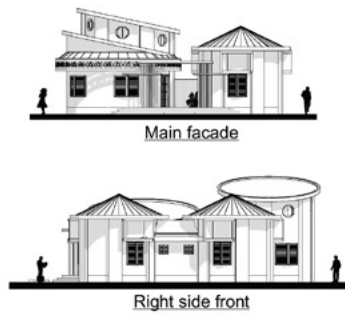
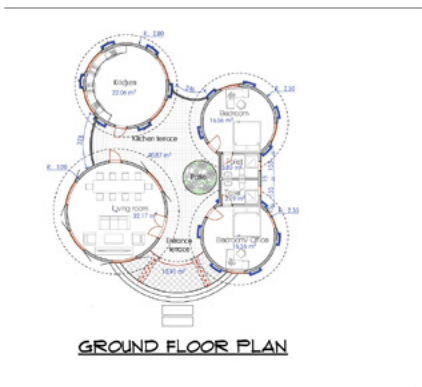
The countries of Togo and Benin are both characterized almost exclusively by their circular architecture. Locally sourced materials are often used in construction including earth, stone, wood, and straw. However, buildings have begun to modernize by using different materials such as cement, porcelain coated stoneware tiles, and iron or tile roofs.

The main feature of the circular architectural design is the amount of detail used in the creation of interior spaces. The boxes, most of which are round are arranged in a circle, thereby forming an inner courtyard. This courtyard functions as a space for family gatherings or for household activities like cooking, which is done both inside and outside in the central courtyard. In this proposal, these particular aspects of Tata architecture are taken into account.

Based on the given architectural program, we concluded a two bedroom house (1 bed each) with a living area and a kitchen. Inspired by local architecture, each of the rooms is circular and located near a courtyard. The kitchen has both an interior and exterior space, with proper ventilation for smoke provided in the indoor space.

In our proposal, we opted to provide sustainable solutions to local climate challenges. Thus, each window is protected by an awning that has a particular design inspired by the stones found in the area. The roofs are all sloped and covered with terracotta tiles while walls are made of compressed earth bricks. This will ensure an excellent thermal comfort to the building, while accordingly optimizing the total cost of construction. In addition, local materials like stone and wood were also highlighted in this project.

This project design includes terraces and patio gardens as external spaces of communion. It is a modern take on a traditional architectural design certainly replicable on a larger scale with larger homes.



- 1 The walls are made of compressed earth blocks
- 2 The windows are wooden louvred
- 3 The roofs are all sloped and covered with terracotta tiles.
- 4 Steel column
- 5 With the presence of a large courtyard, the air currents circulate freely in all the compartments of the house