

ATL

Volume 1 | Number 1

Article 24

February 2016

The Gojo

Kalkidan Tesfaye
Ethiopia

Filimon Teshome

Hundaol Girma

Follow this and additional works at: <https://digitalcommons.kennesaw.edu/atl>

 Part of the [African Languages and Societies Commons](#), [African Studies Commons](#), and the [Urban, Community and Regional Planning Commons](#)

Recommended Citation

Tesfaye, Kalkidan; Teshome, Filimon; and Girma, Hundaol (2016) "The Gojo," *ATL*: Vol. 1 : No. 1 , Article 24.
Available at: <https://digitalcommons.kennesaw.edu/atl/vol1/iss1/24>

This Article is brought to you for free and open access by DigitalCommons@Kennesaw State University. It has been accepted for inclusion in ATL by an authorized editor of DigitalCommons@Kennesaw State University. For more information, please contact digitalcommons@kennesaw.edu.

THE GOJO

by Kalkidan Tesfaye, Filimon Teshome & Hundaol Girma
Architects | Ethiopia

HONORABLE MENTION

Inspired by the Sidama of Ethiopia



INSPIRATION

The design is mainly inspired by a traditional house of a native tribe found in Ethiopia called Sidama. The dome form is not exclusive to the area because it is found all over African. It's a form Africans can relate to. The form responds to the tropical climate and has characteristics of hot-climate region African architecture. We have incorporated natural elements like vegetation with the architecture so that it doesn't act like a foreign object in a site but, as a part of the life-cycle while adding to the aesthetic quality of the house.

ELEMENTS OF AFRICAN ARCHITECTURE INCORPORATED IN THE DESIGN

- Dome form
- Courtyard
- Outdoor kitchen
- Outdoor family gathering area (for coffee ceremony)
- The mashrabiya opening style found in northern Africa
- Small openings

AESTHETICS SOURCED FROM AFRICAN TRADITION

Basic colors found in the lifestyle of Africans and colors that have symbolic significance and a rich message (red, green, yellow, and beige). Weaving textures found in day-to-day activities and in artifacts of African tradition.

BUILDING MATERIALS

Foundation: Stone strip foundation
Wall: Bamboo poles with bamboo weaving finish
Roof: Thatched roof with bamboo weaving cover
Openings: Tinted glass
Structure: Load bearing burned mud block
Cantilever Structure: Wood
Floor: Wood plank

HEATING, COOLING, VENTILATION AND AIR FLOW

- Intermediate courtyard for stack ventilation
- Incorporating vegetation for air quality of the spaces
- Protruded windows to avoid sun radiation
- Roof top small opening for removal of exhaust air

SPECIAL ATTENTION TO ADDRESS THE FUNCTIONALITY OF THE AFRICAN KITCHEN

Most of the activities in African kitchen require both indoor and outdoor spaces, thus we have provided an outdoor kitchen. The outdoor kitchen is directly connected to the outdoor family gathering area. The indoor kitchen is also directly connected to the serving area for accessibility and ease of work flow.

WHY A PROSPECTIVE HOMEOWNER WOULD BUY THIS HOUSE

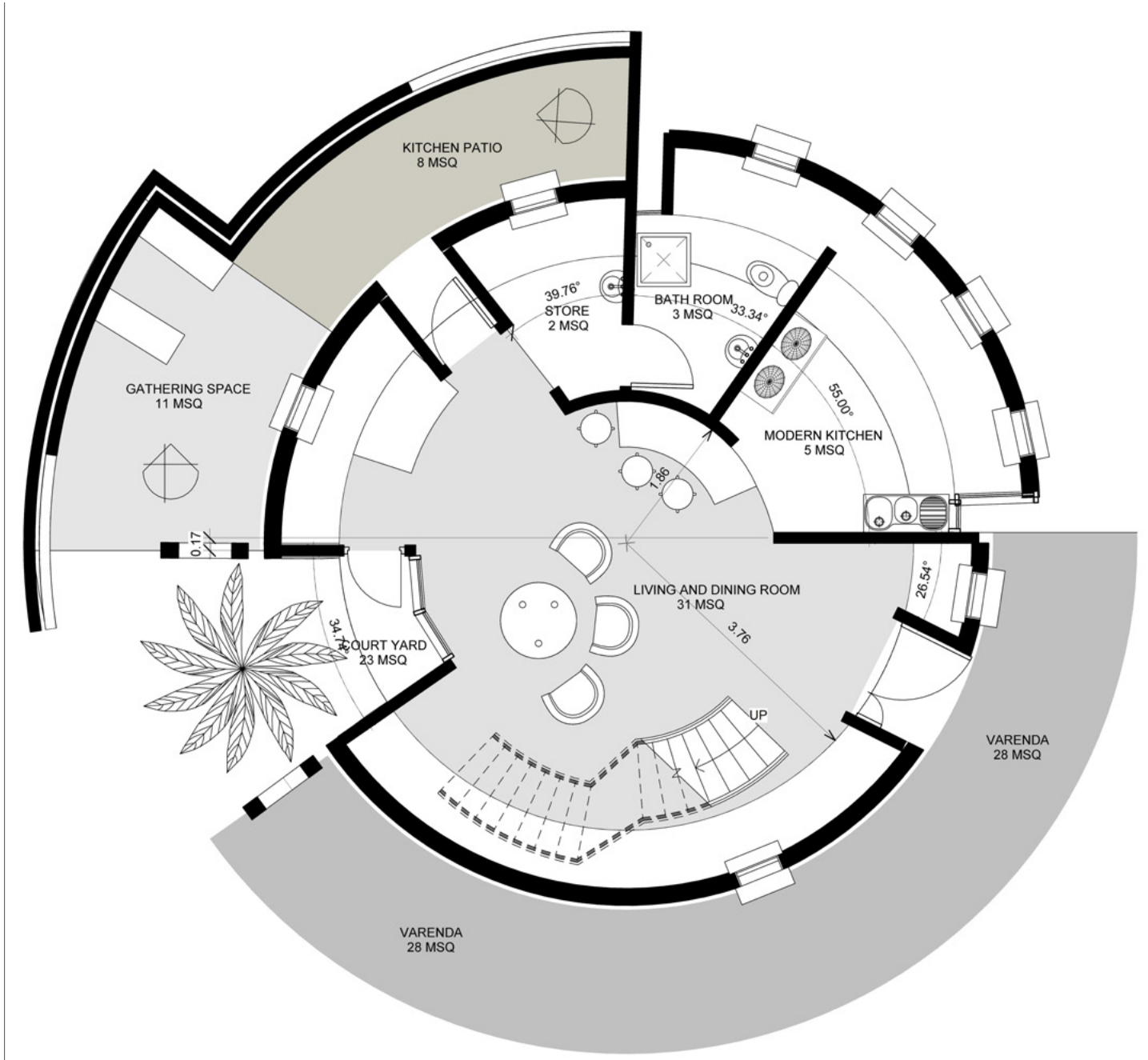
- The form is extremely easy to construct
- The construction can be completed in a very short time,
- It can be built with local labor (doesn't need highly skilled man power)

- Only local and sustainable materials are used, avoiding the unnecessary cost of importing industrialized materials and contamination of the ecosystem
- The architecture and the space quality resonates with the beauty in the diversity of African tradition and delivers a message that African architecture can be a functional and effective trend without compromising the aesthetics

UNIQUE FEATURES TO BE CONSIDERED AS A BUILDING CODE

Minimum one tree has to be incorporated with the building by a means of semipublic space.

GROUND FLOOR



FIRST FLOOR

