

Provenance, Journal of the Society of Georgia Archivists

Volume 21 | Number 1

Article 1

January 2003

Front Matter

Susan G. Broome
Mercer University

Follow this and additional works at: <https://digitalcommons.kennesaw.edu/provenance>



Part of the [Archival Science Commons](#)

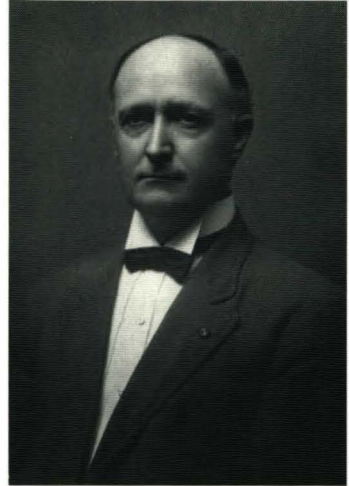
Recommended Citation

Broome, Susan G., "Front Matter," *Provenance, Journal of the Society of Georgia Archivists* 21 no. 1 (2003).
Available at: <https://digitalcommons.kennesaw.edu/provenance/vol21/iss1/1>

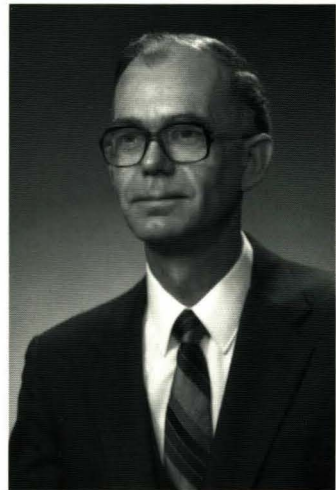
This Front Matter is brought to you for free and open access by DigitalCommons@Kennesaw State University. It has been accepted for inclusion in Provenance, Journal of the Society of Georgia Archivists by an authorized editor of DigitalCommons@Kennesaw State University. For more information, please contact digitalcommons@kennesaw.edu.

PROVENANCE

volume XXI, 2003



Southern Archival Pioneers: Robert L. Meriwether, Thomas Owen



Marie Bankhead Owen, and Lynn E. May Jr.

Editorial Staff

Editor

Susan G. Broome
Mercer University

Associate Editor

Naomi Nelson
Emory University

Managing Editor

Susan Dick Hoffius
Georgia Historical Society

Book Review Editor

Chuck Barber
University of Georgia

Editorial Board

Virginia Cain (2002-2005)
Emory University

Clark Center (2002-2005)
University of Alabama

Karen Jefferson (2002-2005)
Atlanta University Center

Cynthia Pease Miller (2002-2005)
Independent Archivist

Martin T. Olliff (2002-2005)
Troy State University

PROVENANCE

Journal of the Society of Georgia Archivists

Volume XXI, 2003

CONTENTS

Robert L. Meriwether and the South Caroliniana Library	
Nicholas Meriwether	5
Thomas Owen and the Founding of the Alabama Department of Archives and History	
Alden Monroe	22
Marie Bankhead Owen and the Alabama Department of Archives and History, 1920-1955	
Robert J. Jakeman	36
The Lord's Remembrancer: Lynn E. May Jr.	
Bill Sumners	66
Reviews	74

Provenance is published annually by the Society of Georgia Archivists. Potential contributors should consult the Information for Contributors found on the final pages of this issue. Inquiries regarding advertising rates should be sent to Managing Editor, *Provenance*, SGA, P.O. Box 133085, Atlanta, GA 30333, or via the SGA web site <<http://www.soga.org>>. For back orders of previous issues of *Provenance*, please contact Editor, SGA, P.O. Box 133085, Atlanta, GA 30333, or via the SGA web site <<http://www.soga.org>>.

Annual memberships: Individual, \$25; Student, \$10; Couple, \$20; Contributing, \$25; Sustaining, \$35; Patron, \$50 or more. *Georgia Archive*, Volumes I–X (1972–1982), is available in 16 mm roll film or in microfiche, five volumes per set. *Provenance*, Volumes I–XIII (1983–1995), is available in 35 mm roll film. For microfilm inquiries, please contact Administrative Assistant, SGA, P.O. Box 133085, Atlanta, GA 30333, or via the SGA web site <<http://www.soga.org>>. Membership correspondence should be addressed to Administrative Assistant, SGA, P.O. Box 133085, Atlanta, GA 30333, or via the SGA web site <<http://www.soga.org>>. Subscription correspondence should be addressed to Subscription Manager, SGA, P.O. Box 133085, Atlanta, GA 30333, or via the SGA web site <<http://www.soga.org>>.

Cover: Robert L. Meriwether photo courtesy of the South Caroliniana Library, University of South Carolina. Thomas Owen and Marie Bankhead Owen photos courtesy of the Alabama Department of Archives and History. Lynn E. May Jr. photo courtesy of the Southern Baptist Historical Library and Archives.

Provenance and the Society of Georgia Archivists assume no responsibility for statements made by contributors.

The paper in this journal is of an acid-free, high-quality stock, with a pH rating of 7–7.5, in accordance with the guidelines for permanence and durability of the Committee on Production Guidelines for Book Longevity of the Council of Library Resources.