

organic compounds



Acta Crystallographica Section E

Structure Reports

Online

ISSN 1600-5368

(2E)-1-(2,6-Dichloro-3-fluorophenyl)-3-(4-fluorophenyl)prop-2-en-1-one**Richard Betz,^{a*} Thomas Gerber,^a Eric Hosten,^a Aletti S. Praveen,^b Hemmige S. Yathirajan^b and Badiadka Narayana^c**

^aNelson Mandela Metropolitan University, Summerstrand Campus, Department of Chemistry, University Way, Summerstrand, PO Box 77000, Port Elizabeth 6031, South Africa, ^bUniversity of Mysore, Department of Studies in Chemistry, Manasagangotri, Mysore 570 006, India, and ^cMangalore University, Department of Studies in Chemistry, Mangalagangotri 574 199, India
Correspondence e-mail: richard.betz@webmail.co.za

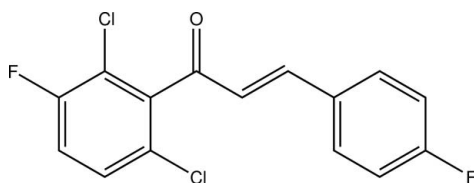
Received 13 January 2012; accepted 20 January 2012

Key indicators: single-crystal X-ray study; $T = 200$ K; mean $\sigma(\text{C}-\text{C}) = 0.002$ Å; disorder in main residue; R factor = 0.035; wR factor = 0.092; data-to-parameter ratio = 17.4.

In the title compound, $\text{C}_{15}\text{H}_8\text{Cl}_2\text{F}_2\text{O}$, the $\text{C}=\text{C}$ double bond is in the E configuration. In the crystal, $\text{C}-\text{H}\cdots\text{O}$ hydrogen bonds connect the molecules into chains along the c axis. A $\pi-\pi$ interaction of $3.628(1)$ Å is also observed between two polyhalogenated benzene rings. The dichlorosubstituted ring exhibits partial disorder over two sets of sites, with site-occupancy factors of 0.573 (3) and 0.427 (3).

Related literature

For pharmaceutical background to chalcones, see: Nielsen *et al.* (2004); Modzelewska *et al.* (2006); Nowakowska (2007); Ni *et al.* (2004). For related structures, see: Yathirajan *et al.* (2006, 2007); Betz *et al.* (2011). For graph-set analysis of hydrogen bonds, see: Etter *et al.* (1990); Bernstein *et al.* (1995).



Experimental

Crystal data

$\text{C}_{15}\text{H}_8\text{Cl}_2\text{F}_2\text{O}$
 $M_r = 313.11$
Monoclinic, $P2_1/c$
 $a = 12.2311(3)$ Å
 $b = 10.3115(2)$ Å

$c = 11.2468(3)$ Å
 $\beta = 108.935(1)^\circ$
 $V = 1341.70(6)$ Å³
 $Z = 4$
Mo $K\alpha$ radiation

$\mu = 0.50$ mm⁻¹
 $T = 200$ K

$0.48 \times 0.34 \times 0.27$ mm

Data collection

Bruker APEXII CCD diffractometer
Absorption correction: multi-scan (SADABS; Bruker, 2008)
 $T_{\min} = 0.825$, $T_{\max} = 1.000$

12634 measured reflections
3328 independent reflections
2724 reflections with $I > 2\sigma(I)$
 $R_{\text{int}} = 0.015$

Refinement

$R[F^2 > 2\sigma(F^2)] = 0.035$
 $wR(F^2) = 0.092$
 $S = 1.06$
3328 reflections

191 parameters
H-atom parameters constrained
 $\Delta\rho_{\max} = 0.24$ e Å⁻³
 $\Delta\rho_{\min} = -0.25$ e Å⁻³

Table 1
Hydrogen-bond geometry (Å, °).

$D-\text{H}\cdots A$	$D-\text{H}$	$\text{H}\cdots A$	$D\cdots A$	$D-\text{H}\cdots A$
$\text{C1}-\text{H1}\cdots\text{O1}^i$	0.95	2.51	3.3982 (16)	156
$\text{C12}-\text{H12}\cdots\text{O1}^i$	0.95	2.55	3.4266 (19)	153

Symmetry code: (i) $x, -y + \frac{1}{2}, z + \frac{1}{2}$

Data collection: APEX2 (Bruker, 2010); cell refinement: SAINT (Bruker, 2010); data reduction: SAINT; program(s) used to solve structure: SHELXS97 (Sheldrick, 2008); program(s) used to refine structure: SHELXL97 (Sheldrick, 2008); molecular graphics: ORTEP-3 (Farrugia, 1997) and Mercury (Macrae *et al.*, 2008); software used to prepare material for publication: SHELXL97 and PLATON (Spek, 2009).

ASP thanks the University of Mysore for research facilities.

Supplementary data and figures for this paper are available from the IUCr electronic archives (Reference: WN2465).

References

- Bernstein, J., Davis, R. E., Shimoni, L. & Chang, N.-L. (1995). *Angew. Chem. Int. Ed. Engl.* **34**, 1555–1573.
- Betz, R., Gerber, T., Hosten, E., Samshuddin, S., Narayana, B. & Yathirajan, H. S. (2011). *Acta Cryst. E* **67**, o3181–o3182.
- Bruker (2008). SADABS. Bruker AXS Inc., Madison, Wisconsin, USA.
- Bruker (2010). APEX2 and SAINT. Bruker AXS Inc., Madison, Wisconsin, USA.
- Etter, M. C., MacDonald, J. C. & Bernstein, J. (1990). *Acta Cryst. B* **46**, 256–262.
- Farrugia, L. J. (1997). *J. Appl. Cryst.* **30**, 565.
- Macrae, C. F., Bruno, I. J., Chisholm, J. A., Edgington, P. R., McCabe, P., Pidcock, E., Rodriguez-Monge, L., Taylor, R., van de Streek, J. & Wood, P. A. (2008). *J. Appl. Cryst.* **41**, 466–470.
- Modzelewska, A., Pettit, C., Achanta, G., Davidson, N. E., Huang, P. & Khan, S. R. (2006). *Bioorg. Med. Chem.* **14**, 3491–3495.
- Ni, L., Meng, C. Q. & Sikorski, J. A. (2004). *Expert Opin. Ther. Pat.* **14**, 1669–1691.
- Nielsen, S. F., Boesen, T., Larsen, M., Schonning, K. & Kromann, H. (2004). *Bioorg. Med. Chem.* **12**, 3047–3054.
- Nowakowska, Z. (2007). *Eur. J. Med. Chem.* **42**, 125–137.
- Sheldrick, G. M. (2008). *Acta Cryst. A* **64**, 112–122.
- Spek, A. L. (2009). *Acta Cryst. D* **65**, 148–155.
- Yathirajan, H. S., Mayekar, A. N., Sarojini, B. K., Narayana, B. & Bolte, M. (2007). *Acta Cryst. E* **63**, o426–o427.
- Yathirajan, H. S., Sarojini, B. K., Narayana, B., Bindya, S. & Bolte, M. (2006). *Acta Cryst. E* **62**, o3631–o3632.

supporting information

Acta Cryst. (2012). E68, o512 [doi:10.1107/S1600536812002589]

(2E)-1-(2,6-Dichloro-3-fluorophenyl)-3-(4-fluorophenyl)prop-2-en-1-one

Richard Betz, Thomas Gerber, Eric Hosten, Aletti S. Praveen, Hemmige S. Yathirajan and Badiadka Narayana

S1. Comment

Chalcones constitute an important group of natural products and some of them possess a wide range of biological activities, such as antibacterial (Nielsen *et al.*, 2004) and anticancer (Modzelewska *et al.*, 2006). A review of anti-infective and anti-inflammatory chalcones (Nowakowska, 2007) and recent advances in therapeutic chalcones have been reported (Ni *et al.*, 2004). Related crystal structures of some chalcones, *e.g.* 1-(2,4-dichloro-5-fluorophenyl)-3-(3,4-dimethoxyphenyl)prop-2-en-1-one (Yathirajan *et al.*, 2006) and (2E)-1-(2,4-dichlorophenyl)-3-(2-hydroxyphenyl)prop-2-en-1-one (Yathirajan *et al.*, 2007) have been reported. As part of our ongoing studies on chalcones (Betz *et al.*, 2011), the title compound was synthesized and its crystal structure is reported here.

The C=C double bond of the Michael system is in the *E* configuration. The fluorine atom on the polyhalogenated phenyl ring, together with its attached carbon atom is disordered over two sites, as are the ring CH *meta* to it. The site occupancy factors refined to 0.573 (3) and 0.427 (3). The least-squares planes defined by the carbon atoms of the two rings make a dihedral angle of 82.37 (8)° (Fig. 1).

In the crystal structure, intermolecular C—H···O hydrogen bonds are observed (Table 1 and Fig. 2), forming a 6-membered chelate ring. In terms of graph-set analysis (Etter *et al.*, 1990; Bernstein *et al.*, 1995), the descriptor for this pattern is $C^1_1(5)C^1_1(7)$ on the unitary level. Molecules are connected into chains along the crystallographic *c* axis. A π - π interaction of 3.628 (1) Å is also observed between two polyhalogenated phenyl rings. The packing of the title compound in the crystal structure is shown in Fig. 3.

S2. Experimental

To a stirred solution of 1-(2,6-dichloro-3-fluorophenyl)ethanone (1 g, 4.8 mmol) and 4-fluorobenzaldehyde (0.59 g, 4.8 mmol) in ethanol (10 ml), powdered KOH (0.4 g 7.2 mmol) was added at 273 K. The reaction mixture was stirred at room temperature for 1 h. After completion of the reaction, the reaction mixture was poured into ice cold water and acidified with 1.5 N HCl (pH ~3). The resulting precipitate was filtered and dried to afford 1.3 g of the title compound as a pale yellow solid in 86% yield. Single crystals suitable for the diffraction study were grown from a mixture of toluene:acetone (*v:v* = 1:1) by slow evaporation at room temperature (m.p.: 421–424 K).

S3. Refinement

H atoms were placed in calculated positions (C—H = 0.95 Å) and were included in the refinement in the riding model approximation, with $U_{\text{iso}}(\text{H}) = 1.2U_{\text{eq}}(\text{C})$.

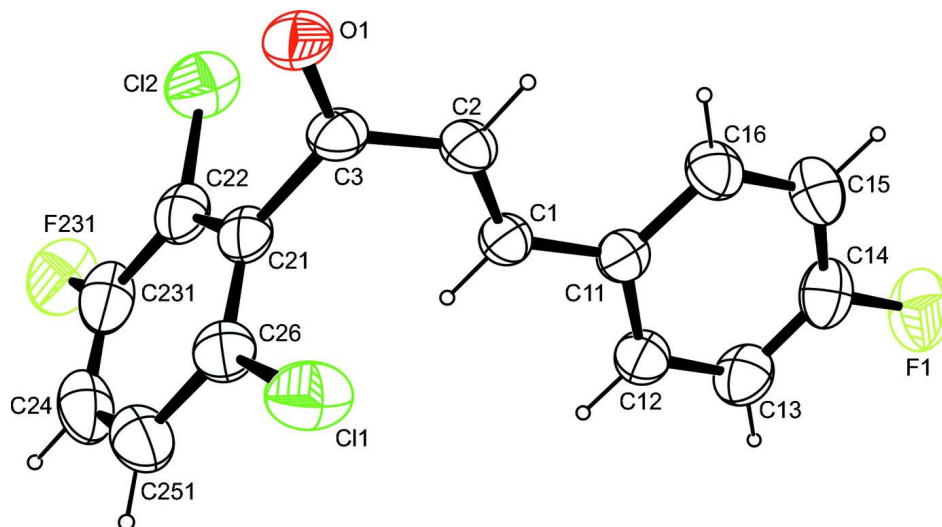
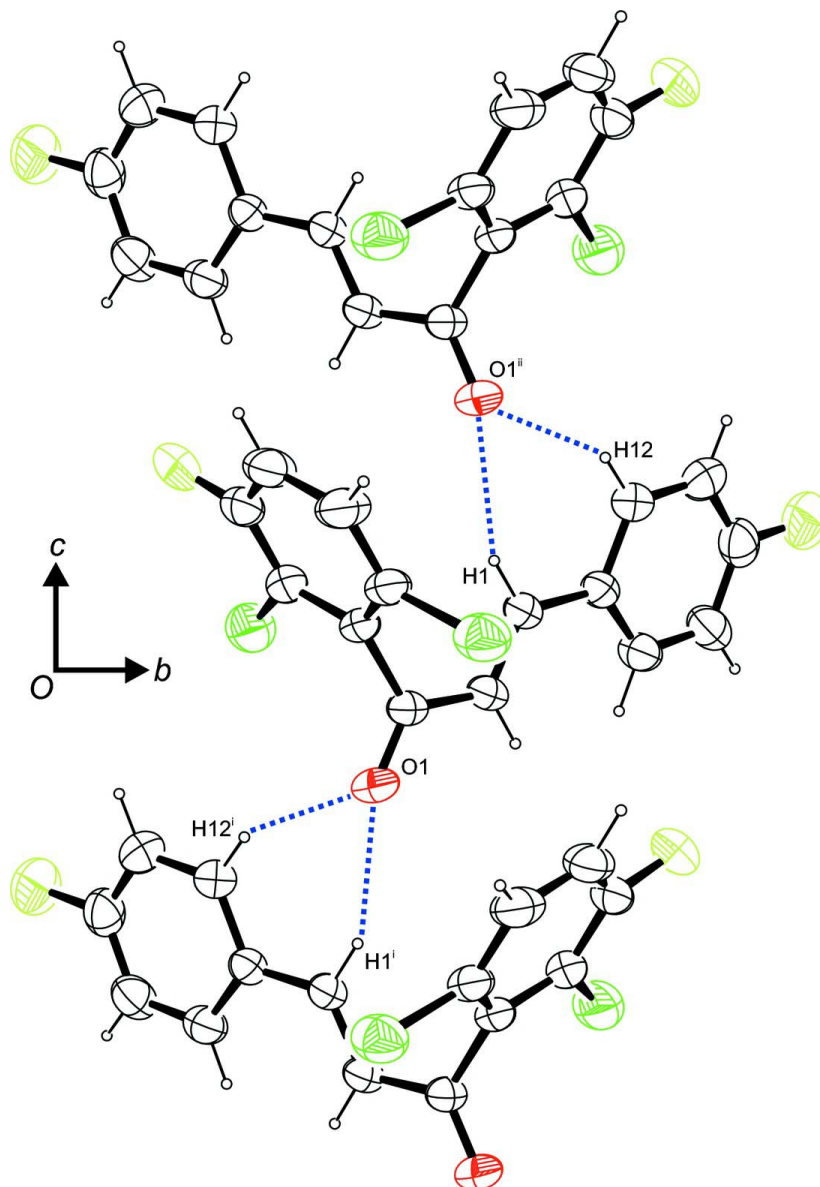


Figure 1

The molecular structure of the title compound, with anisotropic displacement ellipsoids drawn at the 50% probability level. For clarity, only the major component of the disorder model is depicted.

**Figure 2**

Intermolecular contacts, viewed along $[-1\ 0\ 0]$. For clarity, only the major component of the disorder model is depicted. Symmetry operators: ⁱ $x, -y + 1/2, z - 1/2$; ⁱⁱ $x, -y + 1/2, z + 1/2$. Dashed lines indicate hydrogen bonds.

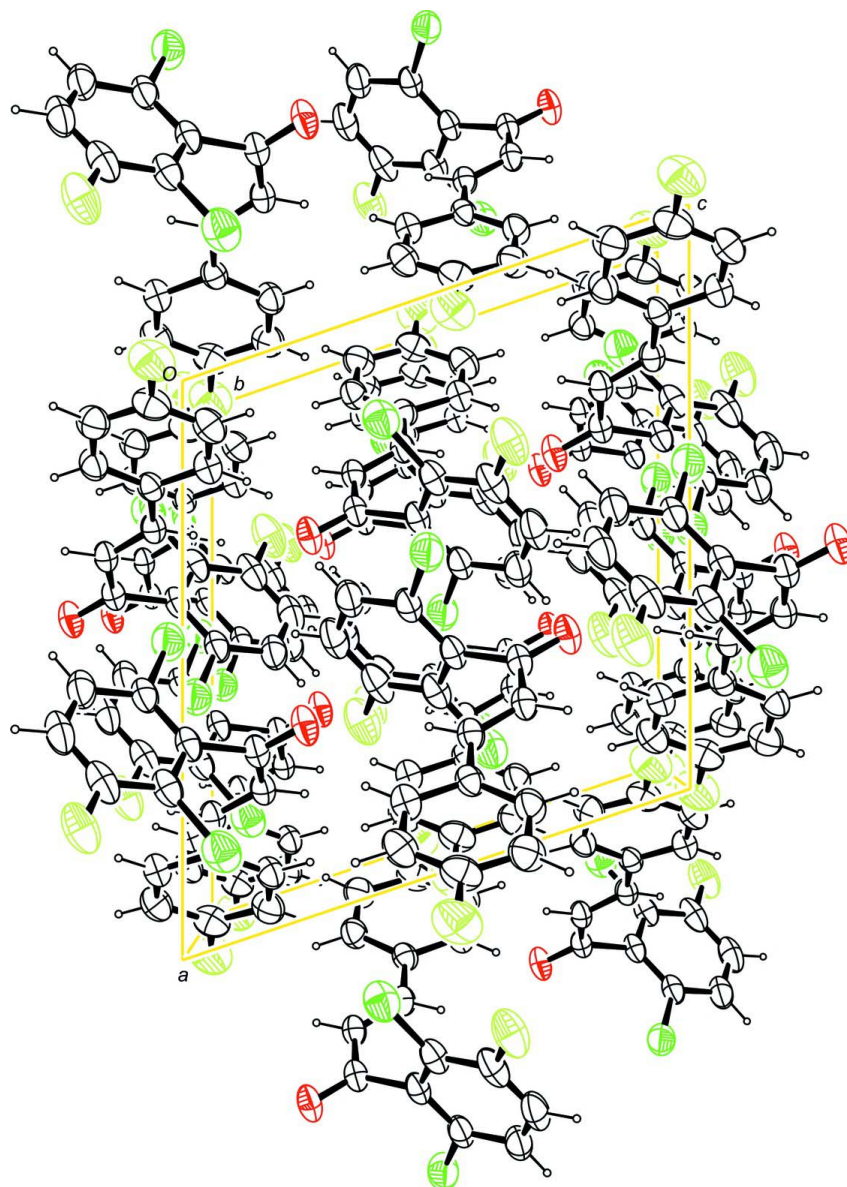


Figure 3

Molecular packing of the title compound, viewed along [0 1 0]. Anisotropic displacement ellipsoids are drawn at the 50% probability level. For clarity, only the major component of the disorder model is depicted.

(2E)-1-(2,6-Dichloro-3-fluorophenyl)-3-(4-fluorophenyl)prop-2-en-1-one

Crystal data

$C_{15}H_8Cl_2F_2O$

$M_r = 313.11$

Monoclinic, $P2_1/c$

Hall symbol: $-P\ 2_1/c$

$a = 12.2311(3)\ \text{\AA}$

$b = 10.3115(2)\ \text{\AA}$

$c = 11.2468(3)\ \text{\AA}$

$\beta = 108.935(1)^\circ$

$V = 1341.70(6)\ \text{\AA}^3$

$Z = 4$

$F(000) = 632$

$D_x = 1.550\ \text{Mg m}^{-3}$

Melting point = 421–424 K

Mo $K\alpha$ radiation, $\lambda = 0.71073\ \text{\AA}$

Cell parameters from 7019 reflections

$\theta = 2.7\text{--}28.2^\circ$

$\mu = 0.50 \text{ mm}^{-1}$
 $T = 200 \text{ K}$

Block, colourless
 $0.48 \times 0.34 \times 0.27 \text{ mm}$

Data collection

Bruker APEXII CCD
 diffractometer
 Radiation source: fine-focus sealed tube
 Graphite monochromator
 φ and ω scans
 Absorption correction: multi-scan
 (SADABS; Bruker, 2008)
 $T_{\min} = 0.825$, $T_{\max} = 1.000$

12634 measured reflections
 3328 independent reflections
 2724 reflections with $I > 2\sigma(I)$
 $R_{\text{int}} = 0.015$
 $\theta_{\max} = 28.3^\circ$, $\theta_{\min} = 2.7^\circ$
 $h = -16 \rightarrow 16$
 $k = -12 \rightarrow 13$
 $l = -13 \rightarrow 14$

Refinement

Refinement on F^2
 Least-squares matrix: full
 $R[F^2 > 2\sigma(F^2)] = 0.035$
 $wR(F^2) = 0.092$
 $S = 1.06$
 3328 reflections
 191 parameters
 0 restraints
 Primary atom site location: structure-invariant
 direct methods

Secondary atom site location: difference Fourier
 map
 Hydrogen site location: inferred from
 neighbouring sites
 H-atom parameters constrained
 $w = 1/[\sigma^2(F_o^2) + (0.0346P)^2 + 0.5003P]$
 where $P = (F_o^2 + 2F_c^2)/3$
 $(\Delta/\sigma)_{\max} < 0.001$
 $\Delta\rho_{\max} = 0.24 \text{ e } \text{\AA}^{-3}$
 $\Delta\rho_{\min} = -0.25 \text{ e } \text{\AA}^{-3}$

Fractional atomic coordinates and isotropic or equivalent isotropic displacement parameters (\AA^2)

	<i>x</i>	<i>y</i>	<i>z</i>	$U_{\text{iso}}^*/U_{\text{eq}}$	Occ. (<1)
C11	0.55532 (4)	0.18042 (5)	0.01581 (4)	0.05973 (14)	
C12	0.18584 (5)	0.50107 (5)	-0.10590 (5)	0.06391 (15)	
F1	-0.02753 (11)	-0.32385 (11)	-0.03660 (13)	0.0767 (4)	
O1	0.33883 (11)	0.32276 (11)	-0.25385 (9)	0.0498 (3)	
C1	0.23362 (12)	0.10980 (13)	-0.06621 (12)	0.0366 (3)	
H1	0.2685	0.1527	0.0117	0.044*	
C2	0.25296 (12)	0.16144 (14)	-0.16699 (12)	0.0378 (3)	
H2	0.2198	0.1204	-0.2462	0.045*	
C3	0.32232 (13)	0.27733 (14)	-0.16076 (12)	0.0380 (3)	
C11	0.16497 (12)	-0.00496 (13)	-0.06298 (13)	0.0362 (3)	
C12	0.16714 (14)	-0.05235 (15)	0.05394 (14)	0.0435 (3)	
H12	0.2129	-0.0095	0.1282	0.052*	
C13	0.10377 (16)	-0.16073 (16)	0.06360 (16)	0.0522 (4)	
H13	0.1068	-0.1939	0.1434	0.063*	
C14	0.03673 (15)	-0.21884 (16)	-0.04488 (18)	0.0522 (4)	
C15	0.03053 (15)	-0.17524 (16)	-0.16235 (17)	0.0515 (4)	
H15	-0.0173	-0.2177	-0.2358	0.062*	
C16	0.09524 (14)	-0.06845 (15)	-0.17128 (14)	0.0449 (3)	
H16	0.0925	-0.0375	-0.2518	0.054*	
C21	0.37356 (13)	0.34472 (13)	-0.03476 (12)	0.0388 (3)	
C22	0.31594 (15)	0.44789 (15)	-0.00230 (14)	0.0448 (3)	
C24	0.46503 (18)	0.47039 (18)	0.19724 (16)	0.0586 (5)	
H24	0.4956	0.5126	0.2762	0.070*	

C26	0.47854 (14)	0.30709 (15)	0.05110 (13)	0.0434 (3)	
C231	0.36195 (18)	0.50942 (16)	0.11341 (16)	0.0545 (5)	0.573 (3)
F231	0.3031 (2)	0.60294 (18)	0.14524 (19)	0.0723 (7)	0.573 (3)
C251	0.52385 (16)	0.36950 (18)	0.16607 (15)	0.0541 (5)	0.573 (3)
H251	0.5959	0.3423	0.2235	0.065*	0.573 (3)
C232	0.36195 (18)	0.50942 (16)	0.11341 (16)	0.0545 (5)	0.427 (3)
H252	0.3212	0.5795	0.1344	0.065*	0.427 (3)
C252	0.52385 (16)	0.36950 (18)	0.16607 (15)	0.0541 (5)	0.427 (3)
F232	0.6202 (2)	0.3318 (3)	0.2413 (2)	0.0763 (10)	0.427 (3)

Atomic displacement parameters (Å²)

	U^{11}	U^{22}	U^{33}	U^{12}	U^{13}	U^{23}
C11	0.0634 (3)	0.0683 (3)	0.0456 (2)	0.0139 (2)	0.01502 (18)	0.00247 (19)
C12	0.0770 (3)	0.0586 (3)	0.0613 (3)	0.0189 (2)	0.0295 (2)	0.0032 (2)
F1	0.0894 (8)	0.0584 (7)	0.0933 (9)	-0.0277 (6)	0.0450 (7)	-0.0037 (6)
O1	0.0714 (7)	0.0513 (6)	0.0305 (5)	-0.0051 (5)	0.0216 (5)	0.0038 (4)
C1	0.0447 (7)	0.0352 (7)	0.0304 (6)	0.0025 (6)	0.0129 (5)	-0.0027 (5)
C2	0.0467 (7)	0.0392 (7)	0.0282 (6)	0.0018 (6)	0.0131 (5)	-0.0042 (5)
C3	0.0492 (8)	0.0386 (7)	0.0281 (6)	0.0042 (6)	0.0148 (5)	0.0012 (5)
C11	0.0419 (7)	0.0353 (7)	0.0345 (6)	0.0049 (5)	0.0165 (6)	-0.0011 (5)
C12	0.0533 (8)	0.0427 (8)	0.0367 (7)	0.0006 (7)	0.0178 (6)	-0.0004 (6)
C13	0.0643 (10)	0.0490 (9)	0.0503 (9)	-0.0021 (8)	0.0282 (8)	0.0066 (7)
C14	0.0563 (9)	0.0412 (8)	0.0672 (10)	-0.0065 (7)	0.0313 (8)	-0.0042 (7)
C15	0.0550 (9)	0.0502 (9)	0.0529 (9)	-0.0085 (7)	0.0226 (7)	-0.0146 (7)
C16	0.0520 (8)	0.0474 (8)	0.0379 (7)	-0.0026 (7)	0.0182 (6)	-0.0062 (6)
C21	0.0541 (8)	0.0370 (7)	0.0301 (6)	-0.0070 (6)	0.0202 (6)	0.0002 (5)
C22	0.0640 (9)	0.0382 (7)	0.0395 (7)	-0.0061 (7)	0.0267 (7)	-0.0007 (6)
C24	0.0836 (13)	0.0601 (10)	0.0386 (8)	-0.0307 (10)	0.0289 (9)	-0.0147 (7)
C26	0.0552 (9)	0.0471 (8)	0.0319 (7)	-0.0070 (7)	0.0198 (6)	0.0007 (6)
C231	0.0868 (13)	0.0428 (8)	0.0477 (9)	-0.0151 (8)	0.0407 (9)	-0.0105 (7)
F231	0.1165 (18)	0.0509 (11)	0.0629 (12)	0.0040 (10)	0.0478 (12)	-0.0140 (8)
C251	0.0628 (10)	0.0656 (11)	0.0349 (8)	-0.0214 (8)	0.0175 (7)	-0.0026 (7)
C232	0.0868 (13)	0.0428 (8)	0.0477 (9)	-0.0151 (8)	0.0407 (9)	-0.0105 (7)
C252	0.0628 (10)	0.0656 (11)	0.0349 (8)	-0.0214 (8)	0.0175 (7)	-0.0026 (7)
F232	0.0659 (17)	0.113 (2)	0.0383 (13)	-0.0239 (16)	0.0011 (11)	-0.0047 (13)

Geometric parameters (Å, °)

C11—C26	1.7284 (16)	C13—H13	0.9500
C12—C22	1.7284 (18)	C14—C15	1.374 (2)
F1—C14	1.3588 (18)	C15—C16	1.379 (2)
O1—C3	1.2220 (16)	C15—H15	0.9500
C1—C2	1.3410 (19)	C16—H16	0.9500
C1—C11	1.4582 (19)	C21—C26	1.388 (2)
C1—H1	0.9500	C21—C22	1.389 (2)
C2—C3	1.454 (2)	C22—C231	1.392 (2)
C2—H2	0.9500	C24—C231	1.367 (3)

C3—C21	1.5190 (19)	C24—C251	1.373 (3)
C11—C12	1.3950 (19)	C24—H24	0.9500
C11—C16	1.402 (2)	C26—C251	1.389 (2)
C12—C13	1.384 (2)	C231—F231	1.321 (2)
C12—H12	0.9500	C251—H251	0.9500
C13—C14	1.368 (3)		
C2—C1—C11	127.18 (13)	C16—C15—H15	120.7
C2—C1—H1	116.4	C15—C16—C11	120.76 (14)
C11—C1—H1	116.4	C15—C16—H16	119.6
C1—C2—C3	123.09 (13)	C11—C16—H16	119.6
C1—C2—H2	118.5	C26—C21—C22	117.71 (13)
C3—C2—H2	118.5	C26—C21—C3	121.98 (13)
O1—C3—C2	121.99 (13)	C22—C21—C3	120.31 (14)
O1—C3—C21	119.41 (13)	C21—C22—C231	120.61 (16)
C2—C3—C21	118.59 (11)	C21—C22—C12	120.04 (12)
C12—C11—C16	118.39 (13)	C231—C22—C12	119.35 (13)
C12—C11—C1	118.21 (13)	C231—C24—C251	119.29 (15)
C16—C11—C1	123.38 (13)	C231—C24—H24	120.4
C13—C12—C11	121.12 (14)	C251—C24—H24	120.4
C13—C12—H12	119.4	C21—C26—C251	121.18 (15)
C11—C12—H12	119.4	C21—C26—C11	120.02 (11)
C14—C13—C12	118.20 (15)	C251—C26—C11	118.79 (14)
C14—C13—H13	120.9	F231—C231—C24	119.34 (17)
C12—C13—H13	120.9	F231—C231—C22	119.7 (2)
F1—C14—C13	118.73 (16)	C24—C231—C22	120.88 (16)
F1—C14—C15	118.28 (16)	C24—C251—C26	120.32 (17)
C13—C14—C15	122.98 (15)	C24—C251—H251	119.8
C14—C15—C16	118.52 (15)	C26—C251—H251	119.8
C14—C15—H15	120.7		
C11—C1—C2—C3	179.51 (13)	C2—C3—C21—C22	-94.75 (16)
C1—C2—C3—O1	180.00 (14)	C26—C21—C22—C231	-0.9 (2)
C1—C2—C3—C21	-1.2 (2)	C3—C21—C22—C231	179.49 (13)
C2—C1—C11—C12	172.16 (14)	C26—C21—C22—C12	179.08 (11)
C2—C1—C11—C16	-9.1 (2)	C3—C21—C22—C12	-0.51 (18)
C16—C11—C12—C13	1.1 (2)	C22—C21—C26—C251	0.7 (2)
C1—C11—C12—C13	179.87 (14)	C3—C21—C26—C251	-179.74 (13)
C11—C12—C13—C14	-1.4 (2)	C22—C21—C26—C11	-179.36 (11)
C12—C13—C14—F1	-178.78 (15)	C3—C21—C26—C11	0.22 (19)
C12—C13—C14—C15	0.7 (3)	C251—C24—C231—F231	177.32 (16)
F1—C14—C15—C16	179.77 (15)	C251—C24—C231—C22	0.3 (2)
C13—C14—C15—C16	0.3 (3)	C21—C22—C231—F231	-176.54 (16)
C14—C15—C16—C11	-0.6 (2)	C12—C22—C231—F231	3.5 (2)
C12—C11—C16—C15	-0.1 (2)	C21—C22—C231—C24	0.4 (2)
C1—C11—C16—C15	-178.78 (14)	C12—C22—C231—C24	-179.57 (13)
O1—C3—C21—C26	-95.46 (17)	C231—C24—C251—C26	-0.6 (2)
C2—C3—C21—C26	85.68 (17)	C21—C26—C251—C24	0.1 (2)

O1—C3—C21—C22	84.11 (18)	C11—C26—C251—C24	-179.89 (12)
---------------	------------	------------------	--------------

Hydrogen-bond geometry (Å, °)

<i>D—H...A</i>	<i>D—H</i>	<i>H...A</i>	<i>D...A</i>	<i>D—H...A</i>
C1—H1...O1 ⁱ	0.95	2.51	3.3982 (16)	156
C12—H12...O1 ⁱ	0.95	2.55	3.4266 (19)	153

Symmetry code: (i) $x, -y+1/2, z+1/2$.