

Dartmouth College

Dartmouth Digital Commons

Open Dartmouth: Published works by
Dartmouth faculty

Faculty Work

6-3-2014

Climate Change and Forest Fires Synergistically Drive Widespread Melt Events of the Greenland Ice Sheet

Kaitlin M. Keegan
Dartmouth College

Mary R. Albert
Dartmouth College

Joseph R. McConnell
Nevada System of Higher Education

Ian Baker
Dartmouth College

Follow this and additional works at: <https://digitalcommons.dartmouth.edu/facoa>



Part of the [Environmental Monitoring Commons](#), and the [Glaciology Commons](#)

Dartmouth Digital Commons Citation

Keegan, Kaitlin M.; Albert, Mary R.; McConnell, Joseph R.; and Baker, Ian, "Climate Change and Forest Fires Synergistically Drive Widespread Melt Events of the Greenland Ice Sheet" (2014). *Open Dartmouth: Published works by Dartmouth faculty*. 1617.
<https://digitalcommons.dartmouth.edu/facoa/1617>

This Article is brought to you for free and open access by the Faculty Work at Dartmouth Digital Commons. It has been accepted for inclusion in Open Dartmouth: Published works by Dartmouth faculty by an authorized administrator of Dartmouth Digital Commons. For more information, please contact dartmouthdigitalcommons@groups.dartmouth.edu.

Climate change and forest fires synergistically drive widespread melt events of the Greenland Ice Sheet

Kaitlin M. Keegan^{a,1}, Mary R. Albert^a, Joseph R. McConnell^b, and Ian Baker^a

^aThayer School of Engineering, Dartmouth College, Hanover, NH 03755; and ^bDesert Research Institute, Nevada System of Higher Education, Reno, NV 89512

Edited by Robert E. Dickinson, The University of Texas at Austin, Austin, TX, and approved May 1, 2014 (received for review March 23, 2014)

In July 2012, over 97% of the Greenland Ice Sheet experienced surface melt, the first widespread melt during the era of satellite remote sensing. Analysis of six Greenland shallow firn cores from the dry snow region confirms that the most recent prior widespread melt occurred in 1889. A firn core from the center of the ice sheet demonstrated that exceptionally warm temperatures combined with black carbon sediments from Northern Hemisphere forest fires reduced albedo below a critical threshold in the dry snow region, and caused the melting events in both 1889 and 2012. We use these data to project the frequency of widespread melt into the year 2100. Since Arctic temperatures and the frequency of forest fires are both expected to rise with climate change, our results suggest that widespread melt events on the Greenland Ice Sheet may begin to occur almost annually by the end of century. These events are likely to alter the surface mass balance of the ice sheet, leaving the surface susceptible to further melting.

The massive Greenland Ice Sheet (GIS) experiences annual melting at low elevations near the coastline. However, surface melt is extremely rare over $\sim 600,000$ km² of the “dry snow region” in its center (1). In July 2012, ground-based observations confirmed indications from satellite imagery that, for several days, surface melt had occurred over 97% of the ice sheet’s surface (Fig. 1) (2). Melting in the dry snow zone does not contribute to sea level rise; instead, water from these events percolates into the snowpack and refreezes (3). Subsequently, it was determined that the radiative effects of a thin layer of low-level “liquid clouds” added to warming conditions over the GIS in 2012 (4). Evidence from firn cores collected at multiple sites demonstrated that the most recent previous spatially extensive melt occurred in 1889. Thus, at present, widespread melt events are anomalous.

Interestingly, although 1889 and 2012 were relatively warm years, there have been even warmer years over the past century when the snow in the coldest part of the ice sheet did not melt. As such, we hypothesized that, in addition to relatively warm temperatures, the snow albedo may also play a critical role in inducing melt in the dry snow region. In this paper we evaluate the causes of both the 1889 and the 2012 melt events and estimate the expected frequency of these events in the context of continuing climate change in the Arctic.

Results and Discussion

Ice layers formed from refrozen snowmelt in porous firn are prominent upon visual inspection. A prominent ice layer dated to 1889 in multiple firn cores from central Greenland (5–7) and northwest Greenland (8) has been briefly mentioned in the literature. It has been traditionally thought that these melt layers were likely part of a widespread melt event in 1889, but the extent of the melt was unknown. Here, we present physical evidence of a melt layer dating to 1889 in six additional Greenland firn cores from four sites: Summit, NEEM, D4, and ACT 3 (Fig. S1 and Table S1). Thus, the 1889 melt event appears to have been very widespread, and included the dry snow region.

During most summers in the 20th and 21st centuries, it has been too cold to permit snowmelt in the dry snow region of the GIS. Accordingly, the widespread melting in 1889 and in 2012 occurred during periods that were unusually warm (Fig. 2). We

used firn core records of stable water isotopes, $\delta^{18}\text{O}$, as a proxy for temperature (9), although it should be noted that there was only a moderate correlation ($r^2 = 0.29$, Fig. S2) between temperature and $\delta^{18}\text{O}$ at Summit from 2000 to 2010. As methods for the indirect estimation of temperature improve, more accurate historical temperature records may become available. Nevertheless, these data suggest that 1889 was a particularly warm year (Fig. 2C). However, this was not the warmest year recorded in the firn. Temperatures were warmer in 1785, for example, but melting in the dry snow region did not occur in that year (Fig. 2A). Similarly, widespread melting in the dry snow region did not occur during the most recent record-breaking melt extent years of 2002, 2007, or 2010 (10–12). Thus, high temperatures alone are often not enough to cause widespread melt. Indeed, continuous measurements of near-surface conditions at Summit Station from the Greenland Climate Network (GC-Net) instruments show that the temperature reached 0 °C on July 12, 2012 (13), providing ~ 0.94 MJ m⁻² of energy, although ~ 1.1 MJ m⁻² of energy is needed to cause melting in the accumulation area of the ice sheet (calculated in *SI Materials and Methods*). Under present conditions in the dry snow region, this energy threshold cannot be attained from the average summer temperature, irradiance, and albedo. Despite melting in the ablation zone of the ice sheet during summer, unusually warm conditions have not been sufficient to cause widespread melting into the dry snow region.

The albedo of snow is an important factor in snowmelt. If temperatures at the surface of the ice sheet are warm and snow is allowed to age in the absence of fresh accumulation, it will coarsen, and this changing morphology can lower the albedo by up to 14% (14). In addition, black carbon (BC) from incomplete fossil fuel combustion or biomass burning can reach the top of the ice sheet and reduce the albedo by up to 7% (15, 16). We measured BC on a Summit shallow core and also on a near-surface sample of firn containing the 2012 melt layer with an

Significance

Through an examination of shallow ice cores covering a wide area of the Greenland Ice Sheet (GIS), we show that the same mechanism drove two widespread melt events that occurred over 100 years apart, in 1889 and 2012. We found that black carbon from forest fires and rising temperatures combined to cause both of these events, and that continued climate change may result in nearly annual melting of the surface of the GIS by the year 2100. In addition, a positive feedback mechanism may be set in motion whereby melt water is retained as refrozen ice layers within the snow pack, causing lower albedo and leaving the ice sheet surface even more susceptible to future melting.

Author contributions: K.M.K. designed research; K.M.K. and J.R.M. performed research; K.M.K., M.R.A., J.R.M., and I.B. analyzed data; and K.M.K., M.R.A., and I.B. wrote the paper.

The authors declare no conflict of interest.

This article is a PNAS Direct Submission.

Freely available online through the PNAS open access option.

¹To whom correspondence should be addressed. E-mail: kaitlin.m.keegan.th@dartmouth.edu.

This article contains supporting information online at www.pnas.org/lookup/suppl/doi:10.1073/pnas.1405397111/-DCSupplemental.

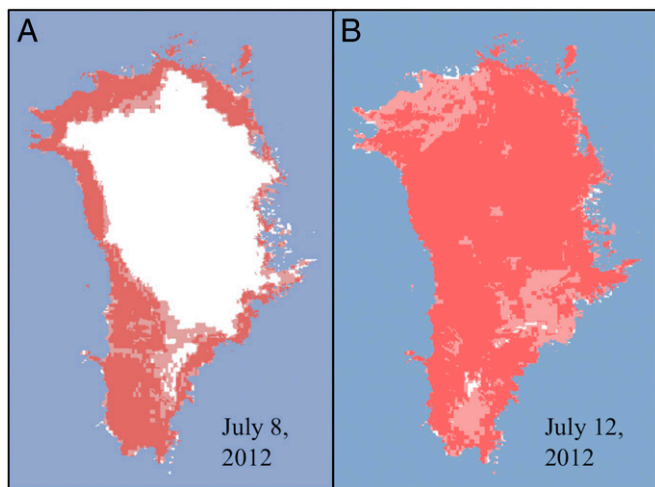


Fig. 1. Melt extent over the GIS determined from Oceansat-2 satellite scatterometer, Special Sensor Microwave Imager/Sounder, and Moderate-resolution Imaging Spectroradiometer satellite data for (A) July 8, 2012, and (B) July 12, 2012. Red areas indicate melt detected by the satellites, white areas indicate no melt, and blue represents ocean. The surface of almost the entire ice sheet, including the dry snow region, experienced melt on July 12, 2012. Figure courtesy of Dorothy Hall, NASA Goddard Space Flight Center.

inductively coupled plasma mass spectrometry (ICP-MS) continuous flow analysis system. This included measurements of total BC concentrations, as well as ammonium, $\delta^{18}\text{O}$, and a suite of other measurements that were used to establish the depth–age

scale. The presence of a high concentration of ammonium concurrent with the BC indicates that the source of the BC was large boreal forest fires (17). Since BC coeval with high concentrations of non-sea-salt sulfur (nss-S) indicates a fossil fuel source of BC (18), we consider low nss-S concentrations concurrent with BC another indication of a forest fire source.

The total BC concentration varies inter- and intra-annually in the firn. The annual average BC concentration was 1.7 ng g^{-1} during the preindustrial period (1750–1850 A.D.), 4.0 ng g^{-1} during the early industrial period (1851–1950), and 2.3 ng g^{-1} from 1951 to present (Fig. 2). Over our 262-y record, there are four large spikes in the annual average BC concentration of 10.4, 10.4, 14.3, and 14.4 ng g^{-1} in 1868, 1889, 1908, and 2012, respectively (Fig. 2). Visual inspection of the firn core revealed the presence of an ice layer in 1889, and surface samples contained a melt layer formed in 2012, but not in 1868 or 1908 when equivalent or greater BC spikes occurred. The low $\delta^{18}\text{O}$ indicates that temperatures were too cool to permit melt during in 1868 as well (Fig. 2B). Similarly, while a spike in BC in 1908 was likely due to forest fires, indicated by a high ammonium concentration, analysis of the stratigraphy suggests that it was deposited late in the year (Fig. 2D). Thus, it was likely deposited at a time when the available surface energy was well below the threshold for melt. Despite the reduced albedo from the BC, temperatures would not have been warm enough to permit melt during that time. Lastly, despite the warm temperature in 1785 indicated by a high $\delta^{18}\text{O}$, a melt event did not occur, because of the lack of albedo reduction from BC (Fig. 2A). The absence of nss-S further implicates the forest fire origin of the BC and concurrent ammonium in 1868, 1889, and 1908 (Fig. S3), because presence of nss-S indicates a fossil fuel source for BC (18).

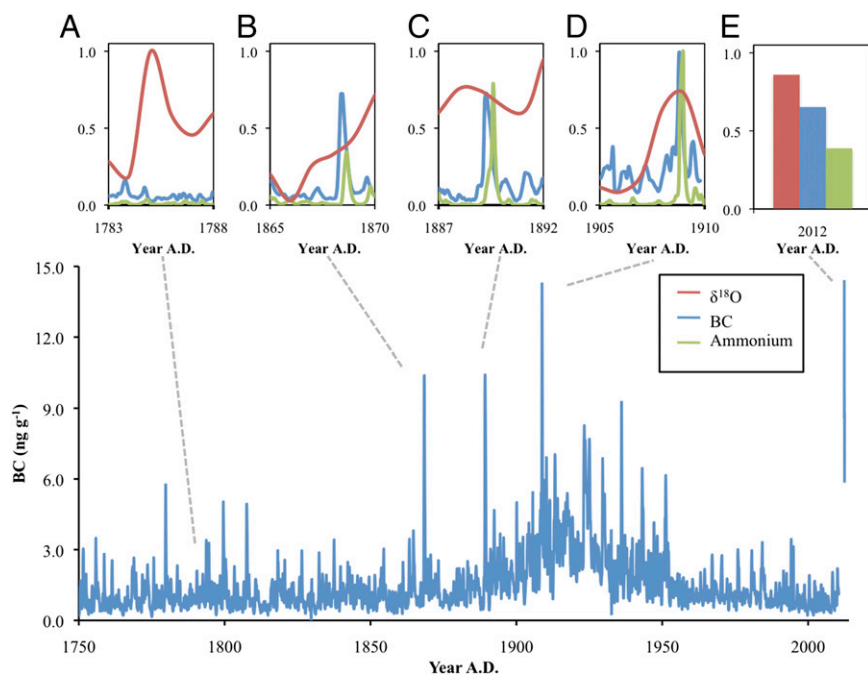


Fig. 2. (Lower) The annual average BC concentrations (ng g^{-1}) from 1750 to 2010 of the Summit-2010 firn core and the 2012 surface section. (Upper) Sections of the BC record along with $\delta^{18}\text{O}$ and ammonium records, plotted on a relative scale normalized to the maximum and minimum values in each record, for the time intervals (A) 1783–1788, (B) 1865–1870, (C) 1887–1892, and (D) 1905–1910, as well as (E) the normalized average value of BC and ammonium concentrations from the July 2012 surface sample, and approximate $\delta^{18}\text{O}$. These time intervals demonstrate extreme scenarios in the center of the GIS with (B–E) depicting the highest concentrations of BC, and (A) the warmest temperature since 1750, but widespread melt events only occurred in 1889 and 2012. In C and E, melt occurred because of the deposition of high concentrations of BC and ammonium, indicating an albedo reduction due to BC from summer forest fires. Importantly, these deposition events occurred during warm summers. In B, a high concentration of BC and presence of ammonium during a cooler summer suggest that the surface was below the energy threshold for melt. In D, the highest concentrations of BC and ammonium in the record were recorded during an average summer, suggesting that the BC was deposited at a time of the year when the available surface energy was well below the threshold for melt. The warmest temperature recorded in the core occurred in 1785, but widespread melting did not occur due to low BC concentration.

