

Dartmouth College

Dartmouth Digital Commons

Dartmouth Scholarship

Faculty Work

5-9-2012

Interleukin-1 β Mediates Metalloproteinase-Dependent Renal Cell Carcinoma Tumor Cell Invasion through the Activation of CCAAT Enhancer Binding Protein β

Brenda L. Petrella
Dartmouth College

Matthew P. P. Vincenti
Dartmouth College

Follow this and additional works at: <https://digitalcommons.dartmouth.edu/facoa>

 Part of the [Cancer Biology Commons](#), and the [Neoplasms Commons](#)

Dartmouth Digital Commons Citation

Petrella, Brenda L. and Vincenti, Matthew P. P., "Interleukin-1 β Mediates Metalloproteinase-Dependent Renal Cell Carcinoma Tumor Cell Invasion through the Activation of CCAAT Enhancer Binding Protein β " (2012). *Dartmouth Scholarship*. 687.
<https://digitalcommons.dartmouth.edu/facoa/687>

This Article is brought to you for free and open access by the Faculty Work at Dartmouth Digital Commons. It has been accepted for inclusion in Dartmouth Scholarship by an authorized administrator of Dartmouth Digital Commons. For more information, please contact dartmouthdigitalcommons@groups.dartmouth.edu.

ORIGINAL RESEARCH

Interleukin-1 β mediates metalloproteinase-dependent renal cell carcinoma tumor cell invasion through the activation of CCAAT enhancer binding protein β

Brenda L. Petrella^{1,2} & Matthew P. Vincenti^{1,2}¹Research Service, Department of Veterans Affairs, VA Medical Center, White River Junction, Vermont²Department of Medicine, Geisel School of Medicine at Dartmouth, Lebanon, New Hampshire**Keywords**

CCAAT enhancer binding protein β , interleukin-1 β , matrix metalloproteinases, renal cell carcinoma, tumor invasion

Correspondence

Brenda L. Petrella, Research Service, Department of Veterans Affairs, 215 North Main Street, White River Junction, VT 05009. Tel: 802-295-9363, ext. 5869; Fax: 802-296-6308; E-mail: petrella@dartmouth.edu

Funding Information

This work was supported by a Department of Veterans Affairs Career Development Award (B. L. P.), the VHL Family Alliance (B. L. P.), and a Department of Veterans Affairs Merit Review Award (M. P. V.).

Received: 16 April 2012; Accepted: 9 May 2012

Cancer Medicine 2012; 1(1): 17–27

doi: 10.1002/cam4.7

Introduction

For 2012, it is predicted that nearly 65,000 new cases of cancer of the kidney and renal pelvis will be diagnosed, and approximately 13,500 of those patients will die from disease-specific causes [1]. Renal cell carcinoma (RCC) is the most common urological cancer and represents the seventh most common cancer in men and the ninth most common cancer in women. When diagnosed and treated early, localized RCC has an excellent prognosis, with 90% of patients surviving beyond 5 years from diagnosis [2]. However, many RCC patients are asymptomatic, and the malignancy may go undetected for some time. This delay in diagnosis is reflected by the observation that approxi-

Abstract

Effective treatment of metastatic renal cell carcinoma (RCC) remains a major medical concern, as these tumors are refractory to standard therapies and prognosis is poor. Although molecularly targeted therapies have shown some promise in the treatment of this disease, advanced RCC tumors often develop resistance to these drugs. Dissecting the molecular mechanisms underlying the progression to advanced disease is necessary to design alternative and improved treatment strategies. Tumor-associated macrophages (TAMs) found in aggressive RCC tumors produce a variety of inflammatory cytokines, including interleukin-1 β (IL-1 β). Moreover, the presence of TAMs and high serum levels of IL-1 β in RCC patients correlate with advanced disease. We hypothesized that IL-1 β in the tumor microenvironment promotes the development of aggressive RCC tumors by directing affecting tumor epithelial cells. To address this, we investigated the role of IL-1 β in mediating RCC tumor cell invasion as a measure of tumor progression. We report that IL-1 β induced tumor cell invasion of RCC cells through a process that was dependent on the activity of matrix metalloproteinases (MMPs) and was independent of migration rate. Specifically, IL-1 β induced the expression of MMP-1, MMP-3, MMP-10, and MT1-MMP in a mechanism dependent on IL-1 β activation of the transcription factor CCAAT enhancer binding protein β (CEBP β). Consistent with its role in MMP gene expression, CEBP β knockdown significantly reduced invasion, but not migration, of RCC tumor cells. These results identify the IL-1 β /CEBP β /MMP pathway as a putative target in the design of anti-metastatic therapies for the treatment of advanced RCC.

mately 30% of RCC patients present with metastatic disease at the time of diagnosis [3]. Prognosis for patients with metastatic disease is poor compared to patients with localized cancer, with the 5-year survival rate dropping to 11% for metastatic patients [2]. In fact, the majority of RCC patients with metastatic disease will not survive 6 months beyond diagnosis. Therefore, understanding the molecular pathways involved in RCC metastasis will identify novel targets for the treatment of this disease.

Clear cell RCC, the most common form of kidney cancer, is genetically linked to the von Hippel Lindau (VHL) tumor suppressor gene in familial and sporadic cases [4]. VHL functions normally to destabilize hypoxia-inducible factor alpha (HIF- α) protein, a key transcription factor that drives

renal tumorigenesis. Dysregulated expression of HIF- α as a direct consequence of VHL inactivation results in tumors that display a hypoxic phenotype, even when the tumor microenvironment is not in fact hypoxic. As a result, clear cell RCC tumors overexpress proangiogenic factors, such as vascular endothelial growth factor (VEGF), and are highly vascularized [4]. It is well accepted that tumor angiogenesis is directed, in part, by inflammatory mediators in the microenvironment, such as those expressed by tumor-associated macrophages (TAMs) [5]. In particular, the proinflammatory cytokine, interleukin-1 β (IL-1 β), has been shown to be important in promoting tumor angiogenesis. Studies in mouse models have demonstrated that inhibition of IL-1 β signaling, although IL-1 receptor antagonists or knockout of the IL-1 β gene, reduced tumor blood vessel formation [6]. TAMs isolated from RCC tumors express high levels of inflammatory cytokines, including IL-1 β , tumor necrosis factor α (TNF α), and interleukin-6 (IL-6; [7]). The presence of TAMs and high serum levels of these cytokines are poor prognostic factors in RCC patients, indicating that an inflammatory microenvironment may promote RCC tumor progression [8–10].

In addition to its role in angiogenesis, we hypothesized that IL-1 β contributes to the progression of RCC by directly affecting tumor cell invasion. Our results show that IL-1 β potently induced the invasiveness of VHL null RCC cells, a process that required the activity of the matrix metalloproteinase (MMP) family of endopeptidases. Collectively, the MMPs degrade every component of the extracellular matrix (ECM) as well as nonmatrix proteins, such as growth factors, adhesion molecules, and other MMPs. Overexpression of MMPs is associated with the progression of many human cancers [11]. We demonstrate that IL-1 β induced the expression of the secreted MMPs: MMP-1 (Collagenase-1), MMP-3 (Stromelysin-1), MMP-10 (Stromelysin-2), and the transmembrane MMP, MT1-MMP (MMP-14), in RCC cells. In addition, the mechanism of IL-1 β -induced MMP expression was mediated by CCAAT enhancer binding protein β (CEBP β). CEBP β is a basic leucine zipper (bZIP) transcription factor shown to contribute to the pathogenesis of breast cancer [12]. Consistent with this, our data show that IL-1 β -induced RCC tumor invasion was dependent on CEBP β . We conclude from this study that the IL-1 β /CEBP β /MMP pathway is a major mediator of RCC tumor invasion and should be considered in the design of molecularly targeted therapeutics.

Material and Methods

Cell culture and treatments

The human 786-0 RCC cell line (American Type Culture Collection, Manassas, VA) is null for VHL

expression [13]. Cells were maintained in Dulbecco's Modified Eagle's Medium (Mediatech, Inc., Herndon, VA) supplemented with 10% fetal bovine serum (FBS; Hyclone, Logan, UT), penicillin (100 U/mL) and streptomycin (100 g/mL), and cultured at 37°C, 5% CO₂. For serum-free conditions, culture medium without supplementation of FBS was used. Cells were washed three times with Hank's Balanced Salt Solution (HBSS; Mediatech, Inc.) prior to treatment in serum-free conditions. IL-1 β (R&D Systems, Minneapolis, MN) was used at the indicated concentrations and times. GM6001 (Millipore, Inc., Bellerica, MA), was prepared in DMSO and used at 25 μ M. An equal volume of DMSO was used as a vehicle control.

Stable transfection

The 786-0 cells were transfected to stably express SA Biosciences (Valencia, CA) SureSilencing CEBP β shRNA (Cat no. KH00991N) or a control scrambled shRNA using Lipofectamine 2000TM Transfection Reagent (Invitrogen, Carlsbad, CA) following manufacturer's instructions. Cells were allowed to recover in fresh DMEM + 10% FBS for 24 h before selection. Transfected cells were diluted 1:1000 and selected with culturing media containing 1 μ g/mL G418 for approximately 2 weeks. Individual colonies were picked and expanded for analysis and cultured under continuous selection. CEBP β knockdown in the polyclonal population and in the individual clones was assessed through Western blotting of whole cell extracts. Scrambled shRNA clones were selected for further analysis if they expressed comparable levels of CEBP β as the 786-0 parental cells. CEBP β shRNA-expressing cells displaying >50% knockdown compared to scrambled shRNA control cells were used in experiments.

Immunoblotting

Whole cell lysates were harvested from confluent 6-well with 2 \times sample buffer (Sigma Chemical, St. Louis, MO). Secreted proteins were isolated from conditioned media using trichloroacetic acid (TCA) precipitation. Samples were resolved by SDS-PAGE as previously described [14]. Blots were probed with antibodies to total CEBP β (Santa Cruz Biotechnology, Santa Cruz, CA), phospho-CEBP β (Thr235), and actin (Cell Signaling Technology, Beverly, MA), MMP-1 (Millipore, Inc.), MMP-3 (R&D Systems), MMP-10 (R&D Systems), and MT1-MMP (Millipore, Inc.). Proteins were visualized using the ThermoPierce Biotechnology (Rockford, IL) Supersignal West Pico or Femto detection kits.

Immunofluorescence

The 786-0 cells were seeded at a density of 2×10^4 cells/well of an 8-well Lab-Tek Chambered #1.0 Borosilicate Coverglass System (Thermo Fisher Scientific, Waltham, MA). Cells were treated overnight in serum-free media in the presence or absence of 1 ng/mL IL-1 β . The following day, cells were fixed with 4% paraformaldehyde at room temperature for 15 min. Antigens were blocked at room temperature for 30 min with a blocking buffer containing 1 \times PBS, 10% normal goat serum, 1% BSA, and 0.3% Triton X-100. Cells were washed with 1 \times PBS + 1% BSA between each step. The human EMT 3-color immunocytochemistry kit (R&D Systems) was used for analysis of EMT markers, Vimentin, E-Cadherin and Snail, according to the manufacturer's instructions. For analysis of CEBP β expression, blocked cells were incubated at room temperature for 2 h with anti-CEBP β antibody (sc-150, Santa Cruz Biotechnology) diluted 1:100 in blocking buffer. No primary antibody was added in control wells to account for background fluorescence. Goat anti-rabbit Alexa 488 secondary antibody (Invitrogen) was added in blocking buffer at (10 μ g/mL) and incubated for an additional hour at room temperature in the dark. Before viewing, cells were thrice washed with 1 \times PBS + 1% BSA and ProLong[®] Gold Antifade Reagent (Invitrogen) was added as a DAPI nuclear counterstain. Immunofluorescence was viewed using a Nikon 90i inverted phase contrast microscope using 20 \times and 40 \times objectives, as indicated, and analyzed using NIS Elements Advanced Research software.

Real-time RT-PCR

Purification of total cellular RNA, reverse transcription, and real-time PCR reactions were all performed as described previously [14]. Briefly, for each experiment, triplicate samples were obtained, and the cDNA for each was assayed in duplicate. A quantity of 50 ng of input cDNA was used in each real-time PCR reaction, and amplification was measured using the following parameters: 95 $^{\circ}$ C 10 min, 40 cycles of 95 $^{\circ}$ C 15 sec, 60 $^{\circ}$ C 1 min, and a plate read. Primer sequences were as published previously [15, 16]. Data are presented as relative expression as calculated using $2^{-\Delta\Delta C(T)}$ method [17].

Migration and collagen invasion assays

HTS FluoroBlok[™] inserts (BD Falcon Labware, 6.5 mm, Franklin Lakes, NJ) were used for both migration and invasion assays. Migration assays were performed as described below without the inclusion of a collagen matrix. Invasion assays were essentially performed as

previously described with a few modifications [18]. Briefly, collagen was prepared from purified bovine type I collagen (Trevigen, Gaithersburg, MD) following manufacturer's instructions. Collagen was neutralized with the addition of 10 \times PBS and 7.5% sodium bicarbonate. FluoroBlok[™] membranes were coated with 100 μ L per cm² growth area with collagen diluted to 1 mg/mL. The collagen was allowed to gel on top of the transwell membranes at 37 $^{\circ}$ C overnight. Cells for migration or invasion assays were serum-starved overnight with or without treatment, as indicated, before being harvested for assays. The next day, cells were seeded on top of the collagen layer (for invasion assays) or on top of the Fluoroblok[™] membrane (for migration assays) at a density of 2×10^4 cells per insert in serum-free media containing 1 ng/mL IL-1 β or no treatment. DMEM + 10% FBS was added to the lower chamber as a chemoattractant, and cells were allowed to invade or migrate for 24 h. Invaded cells were stained with Calcein AM (4 μ M, Invitrogen) and viewed using fluorescence microscopy using a Nikon Eclipse TS100 inverted microscope equipped with Spot digital software. Micrographs were taken using a 2 \times objective. Images were imported into Image J and converted to a threshold image for analysis. Cell numbers were derived from threshold counts of the outlines of cells with a circularity of 0.00–1.00 and an area size exclusion of <15 (pixel²). Each condition was run in triplicate and repeated at least three times. Data are presented as average fold induction of untreated samples derived from the average threshold count of triplicate samples.

FITC-collagen degradation assay

786-0 cells were treated overnight in serum-free media alone or supplemented with 1 ng/mL IL-1 β . The following day, cells were harvested by trypsinization, and 1×10^5 cells were resuspended in 1 mL serum-free media in the presence or absence of IL-1 β . An equal volume of cells (250 μ L) was added to an equal volume (250 μ L) of a collagen mixture and applied to a 24-well plate ($n = 3$) for a final collagen concentration of 1 mg/mL. The collagen was prepared as a 2 mg/mL mixture of purified bovine type I collagen (Trevigen) and a bovine type I FITC-collagen conjugate (Sigma-Aldrich, St. Louis, MO). Collagen was neutralized with the addition of 10 \times PBS and 7.5% sodium bicarbonate. The cell-embedded collagen was allowed to solidify overnight at 37 $^{\circ}$ C before 500 μ L of prewarmed serum-free media (\pm IL-1 β @ 1 ng/mL) was added to the top of the gel. The following day, 100 μ L of media was transferred, and fluorescence of the media was measured at 490/520.

Statistical analysis

Statistical significance was calculated using the student's *t*-test available at <http://www.physics.csbsju.edu/stats/t-test.html> and is represented as \pm standard deviation (SD) of the mean. Significance was assigned to *P*-values <0.05.

Results

IL-1 β induces RCC tumor cell invasion

To begin our investigation of whether the inflammatory cytokine, IL-1 β , promoted an invasive phenotype in RCC, we first measured whether or not IL-1 β treatment induced collagen invasion of the human 786-0 VHL null RCC cell line. The tumor stromal microenvironment is

primarily comprised of type I collagen; therefore, tumor cells must breach this matrix barrier to invade the surrounding tissue [19]. Furthermore, type I collagen is the major protein constituent of bone. Procollagen type I amino-terminal propeptide, a marker of type I collagen metabolism, is significantly elevated in RCC patients with bone metastases [20]. Thus, RCC degradation and invasion of type I collagen has important clinical implications. The 786-0 cells were serum-starved overnight in the presence or absence of IL-1 β before being seeded on top of type I collagen-coated transwells in the presence or absence of IL-1 β stimulation. Treatment of the RCC cells with IL-1 β resulted in induction of tumor cell invasion by 24 h (Fig. 1A).

Tumor cell invasion is a multi-step process beginning with the ability of a cell to individually migrate and to

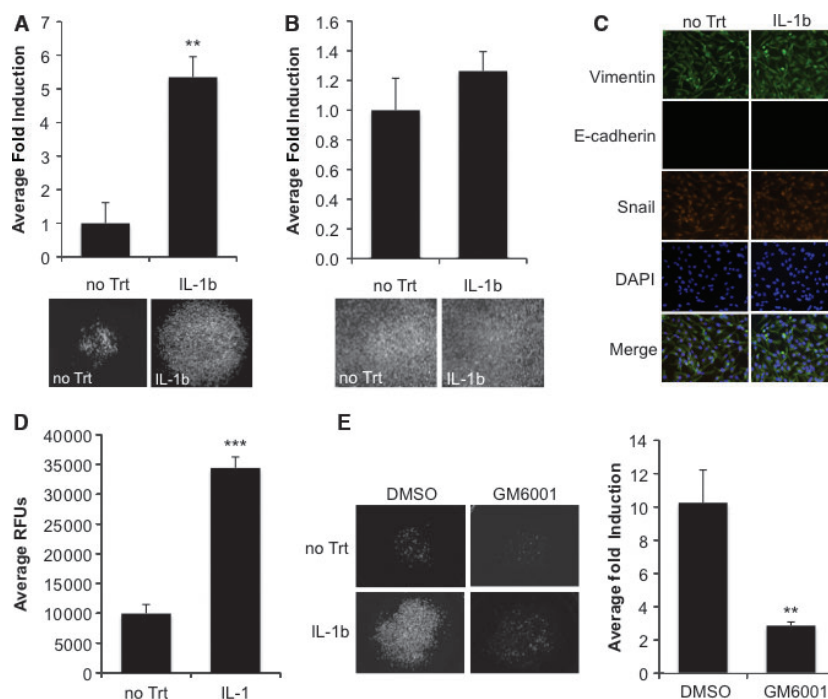


Figure 1. IL-1 β induces collagen invasion and degradation. (A) 786-0 RCC cells were treated overnight in serum-free media either alone or containing 1 ng/mL IL-1 β . The next day, cells were harvested for an invasion assay as described in the Methods and were allowed to invade overnight. Values are presented as average fold induction of untreated cells, error bars are standard deviation of the mean; *P* < 0.005. (B) 786-0 RCC cells were treated overnight in serum-free media alone or containing 1 ng/mL IL-1 β . The next day, cells were harvested for a migration assay as described in the Methods and were allowed to migrate overnight. Values are presented as average fold induction of untreated cells. (C) 786-0 RCC cells were seeded onto glass chamber slides and were untreated or treated with 1 ng/mL IL-1 β in serum-free media overnight. Cells were fixed in 4% paraformaldehyde and incubated with fluorochrome-conjugated antibodies against Vimentin (green), E-Cadherin (red), and Snail (orange). Cells were counter-stained with ProLong[®] Gold Antifade Reagent (DAPI, blue). (D) 786-0 RCC cells were untreated or treated with 1 ng/mL IL-1 β in serum-free media overnight. The next day, cells were harvested and subjected to the FITC collagen degradation assay as described in the Methods. Values represent average relative fluorescence units of triplicate samples; *P* < 0.0001. (E) 786-0 RCC cells were treated overnight in serum-free media either alone or containing 1 ng/mL IL-1 β . The next day, cells were harvested for an invasion assay as described in the Methods with the following treatments: (1) no treatment + DMSO, (2) no treatment + 25 μ M GM6001, (3) 1 ng/mL IL-1 β + DMSO or (4) 1 ng/mL IL-1 β + 25 μ M GM6001. Cells were allowed to invade for 24 h. Values are presented as average fold induction of untreated cells, error bars are standard deviation of the mean; *P* < 0.005.

modify the ECM [21]. We next tested whether or not IL-1 β stimulation affected tumor cell migration using a transwell migration assay lacking a collagen matrix substrate. The 786-0 cells were serum-starved overnight in the presence or absence of IL-1 β before being harvested for the migration assay. IL-1 β had no effect on the migration of the 786-0 cells, which displayed high levels of basal migration at 24 h (Fig. 1B). In agreement, IL-1 β treatment had no effect on the expression of classic epithelial-mesenchymal transition (EMT) markers, as this cell line already displayed an EMT signature, determined by the expression of vimentin and nuclear Snail and the loss of expression of E-cadherin (Fig. 1C; [22]). These results are consistent with a report that activation of the VHL-HIF pathway results in loss of E-cadherin expression, suggesting that VHL null RCC cells undergo EMT at an early stage in tumorigenesis [23].

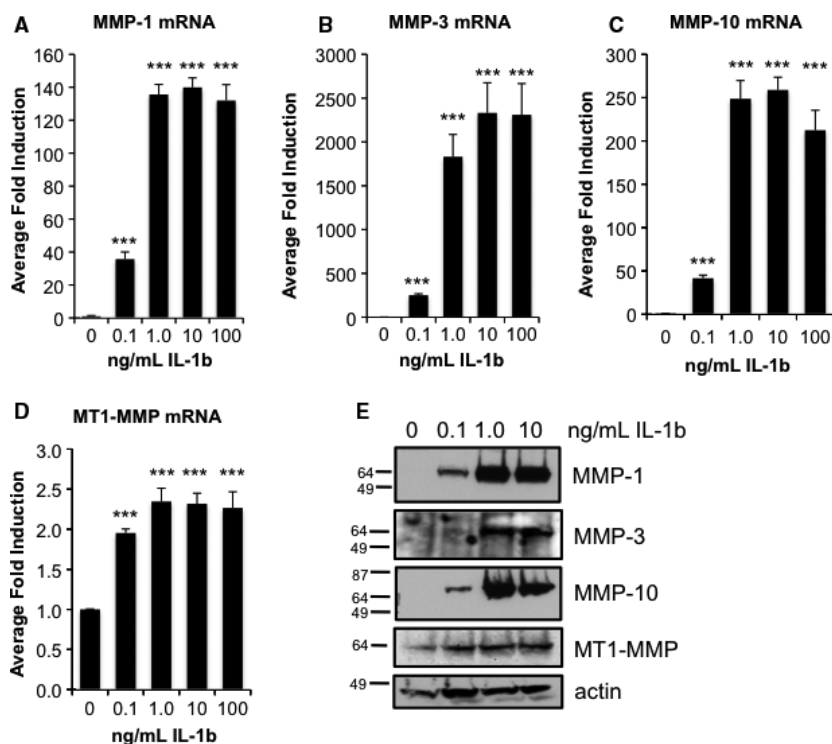
Next, the ability of the RCC cells to modify a type I collagen matrix in response to IL-1 β treatment was assessed. IL-1 β stimulated 786-0 cells were embedded within a semi-solid collagen matrix impregnated with a FITC-collagen conjugate. After 24 h in the presence or absence of IL-1 β treatment, cleaved FITC-collagen released into the overlying media was quantified. IL-1 β -induced type I collagen degradation (Fig. 1D) by the RCC cells, suggesting that IL-1 β -induced cell invasion is mediated by cleavage of the collagen substrate. Because type I collagen degradation requires the enzymatic activity

of the MMPs [19], we tested whether or not IL-1 β -induced tumor invasion was MMP-dependent. Treatment of the RCC cells with GM6001, a pan-MMP inhibitor, blocked IL-1 β -induced invasion (Fig. 1E), demonstrating a role for MMPs in this process.

IL-1 β potently induces MMP expression in RCC cells

Since IL-1 β promoted MMP-dependent type I collagen invasion by RCC cells, we next measured the effect of IL-1 β on MMP gene and protein expression. Specifically, we focused our analysis on MMPs with type I collagenase activity. Overexpression of MMPs has been associated with several steps in tumorigenesis, such as proliferation, apoptosis, inflammatory response, and tumor invasion and metastasis [11]. The 786-0 cells were treated overnight with 0.1–100 ng/mL IL-1 β in serum-free media or serum-free media alone, and total RNA and protein were harvested for analyses. IL-1 β potently induced the expression of MMP-1, MMP-3, and MMP-10 at both the mRNA and protein levels in a dose-responsive manner (Fig. 2A–D). MMP-1 collagenase is primarily responsible for cleaving type I collagen found in the tumor stroma. Both MMP-3 and MMP-10 activate MMP-1 and degrade noncollagen ECM proteins [19]. Importantly, MMP-3 and MMP-10 are often coordinately regulated with MMP-1.

Figure 2. IL-1 β induces MMP expression in a dose-responsive manner in RCC cells. 786-0 RCC cells were treated overnight in serum-free media in the presence or absence of 0.1–100 ng/mL IL-1 β . The following day, total RNA was harvested, and gene expression was analyzed by real-time PCR for MMP-1 (A), MMP-3 (B), MMP-10 (C), and MT1-MMP (D). Data represent MMP gene expression normalized to GAPDH and calculated as average fold induction of untreated cultures; $P < 0.0001$. (E) 786-0 RCC cells were treated overnight in serum-free media in the presence or absence of 0.1–10 ng/mL IL-1 β . The following day, total protein was harvested, and media from the cultures were subjected to TCA precipitation for protein analysis of the secreted MMPs. Protein expression analyses of MMP-1, -3, -10, MT1-MMP, and actin were performed using Western blotting.



MT1-MMP (MMP-14) is a transmembrane protein important for pericellular proteolysis of type I collagen [24]. We previously published that MT1-MMP is regulated by the VHL-HIF pathway and is constitutively expressed in VHL null RCC cells [16], unlike the secreted MMPs (MMP-1, MMP-3, MMP-10), which are not basally expressed in these cells. Constitutive expression of MT1-MMP was mildly induced by IL-1 β treatment (Fig. 2D and E). Another collagenase, MMP-13 (collagenase-2), was not expressed in these cells either basally or in response to IL-1 β treatment (data not shown). Interestingly, mRNA expression of all four MMPs was maximally induced with 1 ng/mL IL-1 β , suggesting that the IL-1 β signaling pathway is saturated at this concentration. Therefore, subsequent experiments were conducted using 1 ng/mL IL-1 β .

MMP-1, MMP-3, and MMP-10 mRNA expression was induced as early as 2 h by IL-1 β and maximally induced by 24 h (Fig. 3A–C). Induced protein levels of MMP-1, MMP-3, and MMP-10 were detected by 8 h and maximum expression was reached by 24 h posttreatment (Fig. 3E). In contrast, MT1-MMP mRNA was not induced until 24 h of IL-1 β treatment, and MT1-MMP protein levels remained relatively constant throughout the 24-h timecourse (Fig. 3E).

IL-1 β induces CEBP β expression in RCC cells

CEBP β is a bZIP transcription factor that responds to inflammatory signals [25]. Importantly, CEBP β activation has been correlated with increased invasiveness of RCC tumors in patients, suggesting it plays a role in the pro-

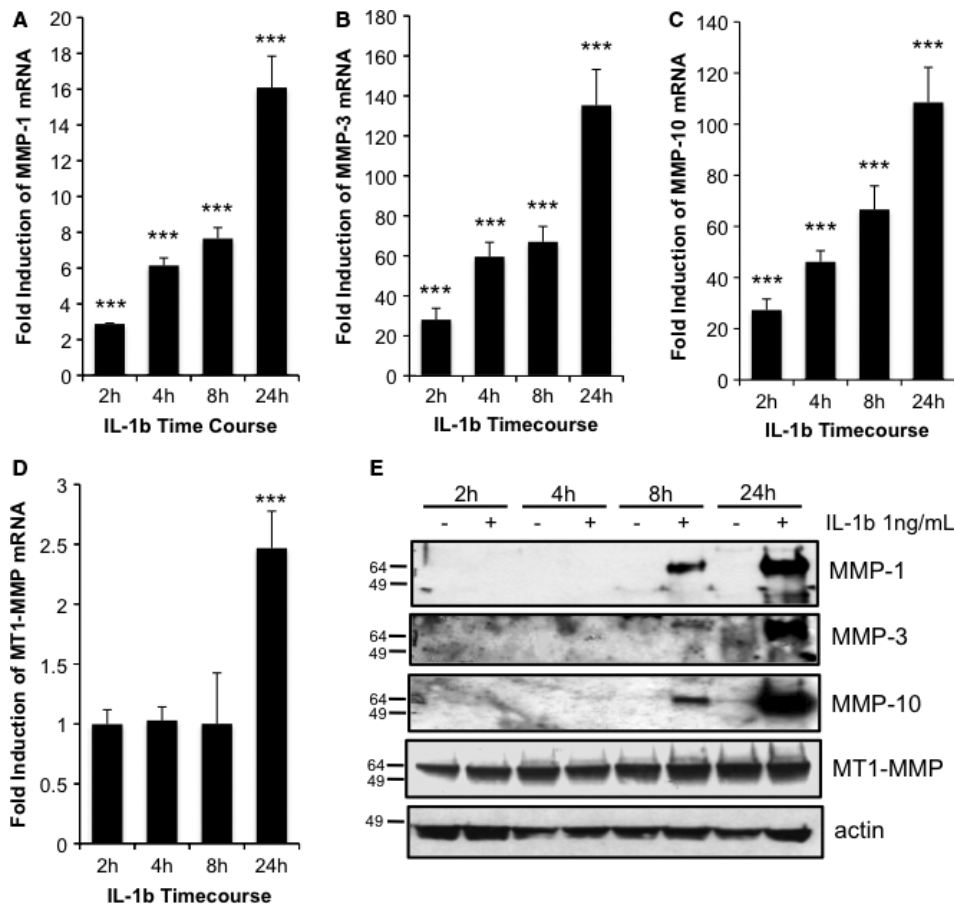


Figure 3. IL-1 β induces MMP expression in a time-dependent manner in RCC cells. 786-0 RCC cells were treated overnight in serum-free media in the presence or absence of 1 ng/mL IL-1 β . At 2, 4, 8, and 24 h posttreatment, total RNA was harvested, and gene expression was analyzed by real-time PCR for MMP-1 (A), MMP-3 (B), MMP-10 (C), and MT1-MMP (D). Data represent MMP gene expression normalized to GAPDH and calculated as average fold induction of untreated cultures; $P < 0.0001$. (E) 786-0 RCC cells were treated overnight in serum-free media in the presence or absence of 1 ng/mL IL-1 β . At 2, 4, 8, and 24 h posttreatment, total protein was harvested, and media from the cultures were subjected to TCA precipitation for protein analysis of the secreted MMPs. Protein expression analyses of MMP-1, -3, -10, MT1-MMP, and actin were performed using Western blotting.

cess of tumor cell invasion [26]. Previously, we published that IL-1 β induces MMP gene expression in non-small cell lung carcinoma and chondrosarcoma cells, and that IL-1 β induction of MMP gene expression in these cancer lines is dependent on the transcriptional activity of the CEBP β [14, 15]. Therefore, we next investigated whether IL-1 β induced the expression and/or activation of CEBP β . 786-0 cells were treated with 0.1–10 ng/mL IL-1 β for 24 h, or at 1 ng/mL in a timecourse experiment (2–24 h), and total protein was isolated for analyses. Similar to the MMP response to IL-1 β treatment, total CEBP β protein was potently induced by IL-1 β treatment at 1 ng/mL, and was measurably induced by 2–4 h of IL-1 β treatment (Fig. 4A and B). Phosphorylation of CEBP β at threonine 235 mediates the transcriptional activity of this transcription factor [25]. IL-1 β -induced phosphorylation at this site was dose-responsive, and P-CEBP β was detectable by 2 h posttreatment (Fig. 4A and B). Furthermore, IL-1 β -induced CEBP β was detected in the nuclei of stimulated cells as measured by immunofluorescence (Fig. 4C). Together, these data demonstrate that IL-1 β induces CEBP β expression and activation in RCC cells.

CEBP β regulates IL-1 β -induced MMP expression in RCC cells

Our data thus far suggest that IL-1 β -induced collagen invasion is mediated through the induction of MMP expression and the subsequent collagenolytic events that result from their activity. We next asked whether or not IL-1 β -induced MMP expression was dependent on IL-1 β -regulated CEBP β expression. To this end, we generated stable cell lines that expressed either a scrambled shRNA or an shRNA specifically targeting CEBP β . Stable expression of this shRNA significantly reduced basal and IL-1 β -induced CEBP β expression in the 786-0 cells (Fig. 5A). Knockdown of CEBP β blocked IL-1 β -induced MMP-1, MMP-3, and MMP-10 expression at both the mRNA and protein levels (Fig. 5B–D,F) with no effect on basal levels (data not shown). Although the high constitutive expression of MT1-MMP mRNA and protein were modestly induced by IL-1 β compared to the other MMPs, this induction was also dependent on CEBP β (Fig. 5E and F). These data demonstrate that CEBP β is required for IL-1 β induction of MMP expression in RCC cells.

CEBP β mediates IL-1 β -induced RCC tumor cell invasion

Since we demonstrated that IL-1 β -induced collagen invasion of RCC cells was dependent on MMP enzymatic activity (Fig. 1E) and that IL-1 β -induced MMP expression was dependent on CEBP β (Fig. 5), we next asked

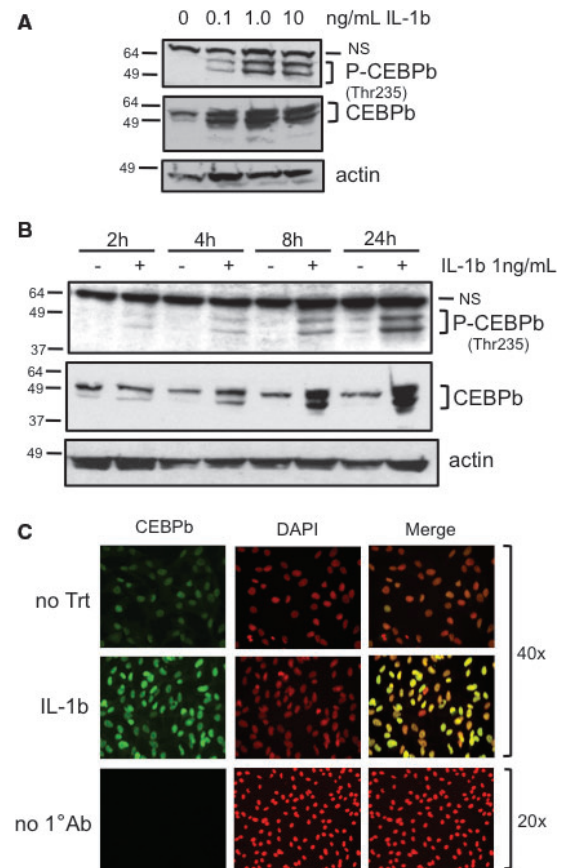


Figure 4. IL-1 β induces CEBP β expression and phosphorylation in RCC cells. (A) 786-0 RCC cells were treated overnight in serum-free media in the presence or absence of 0.1–100 ng/mL IL-1 β . The following day, total protein was harvested and immunoblotted for phospho-CEBP β (Thr235), total CEBP β , and actin. (B) 786-0 RCC cells were treated overnight in serum-free media in the presence or absence of 1 ng/mL IL-1 β . At 2, 4, 8 and 24 h posttreatment, total protein was harvested and immunoblotted for phospho-CEBP β (Thr235), total CEBP β , and actin. (C) 786-0 RCC cells were seeded onto glass chamber slides for immunofluorescence analysis of CEBP β as described in the Methods. The next day, cells were untreated or treated with 1 ng/mL IL-1 β in serum-free media overnight before fixation. Immunofluorescent expression of CEBP β was visualized using Alexa 488-conjugated secondary antibodies (CEBP β , green). Cells incubated with no primary antibody were included as a negative control for background fluorescence. Cells were counter-stained with ProLong[®] Gold Antifade Reagent (DAPI, false-colored red). Micrographs were taken using a 20 \times or 40 \times objective, as indicated. Merged images of CEBP β expression and DAPI stain appear yellow.

whether or not CEBP β was required for IL-1 β -mediated RCC tumor cell invasion. The stable scrambled shRNA and CEBP β shRNA-expressing cell lines were treated overnight in serum-free media in the presence or absence of 1 ng/mL IL-1 β before being seeded on top of type I collagen-coated transwells, as in Figure 1. CEBP β knockdown significantly decreased IL-1 β -induced tumor cell

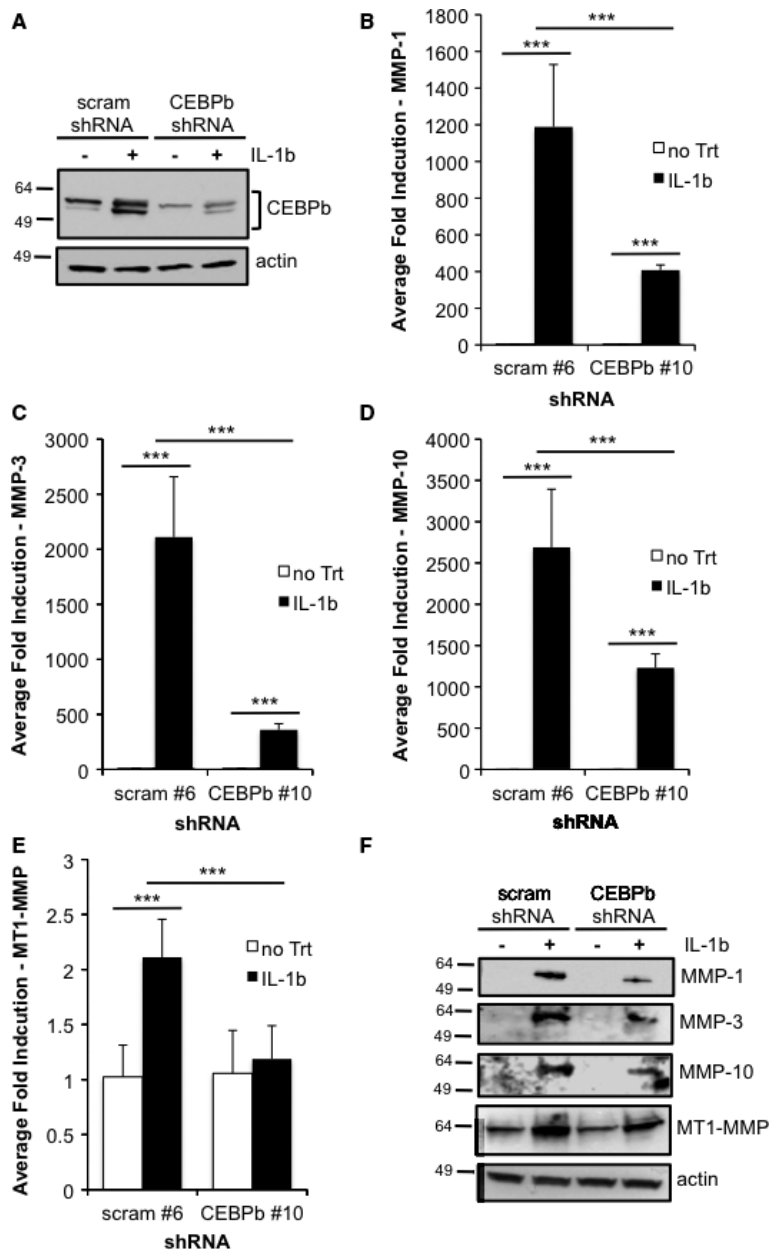


Figure 5. IL-1 β -induced MMP expression is dependent on CEBP β . Stable lines of 786-0 cells expressing either a scrambled shRNA or a CEBP β -targeting shRNA were generated. Subconfluent cultures of individual clonal stable lines were treated overnight in serum-free media in the presence or absence of 1 ng/mL IL-1 β . The following day, total RNA was harvested, and gene expression was analyzed by real-time PCR for MMP-1 (A), MMP-3 (B), MMP-10 (C), and MT1-MMP (D). Samples were performed in triplicate and experiments repeated twice. Data represent MMP gene expression normalized to GAPDH and calculated as average fold induction of untreated samples; $P < 0.0001$. (E) Stable polyclonal lines were treated overnight in serum-free media in the presence or absence of 1 ng/mL IL-1 β . The following day, total protein was harvested, and media from the cultures were subjected to TCA precipitation for protein analysis of the secreted MMPs. Protein expression analyses of total CEBP β , MMP-1, -3, -10, MT1-MMP, and actin were performed using Western blotting.

invasion (Fig. 6A). Importantly, CEBP β knockdown had no effect on the migratory behavior of these cells at 24 h (Fig. 6B), suggesting that the IL-1 β /CEBP β /MMP axis specifically enables the cells to modify the collagen barrier present in the invasion assay. These studies demonstrate an important role for CEBP β in mediating IL-1 β -induced RCC tumor cell invasion.

Discussion

Despite advances in our understanding of kidney tumor biology, metastatic RCC remains difficult to treat.

Contributing to the low survival rate of advanced RCC patients is the fact that this cancer is refractory to chemotherapy and radiation. For years, the standard of care was immunotherapy in the form of high doses of interleukin-2 (IL-2) and/or interferon- α (INF- α). Unfortunately, patients suffered from acute toxicity, and the complete response rate was low [27]. Recently, molecularly targeted therapies, such as VEGF signaling inhibitors (sorafenib, sunitinib, bevacizumab) and mTOR inhibitors (everolimus, temsirolimus) have become FDA-approved as front-line therapy for RCC patients [28]. Although the adverse effects of these treatments are, in general, better

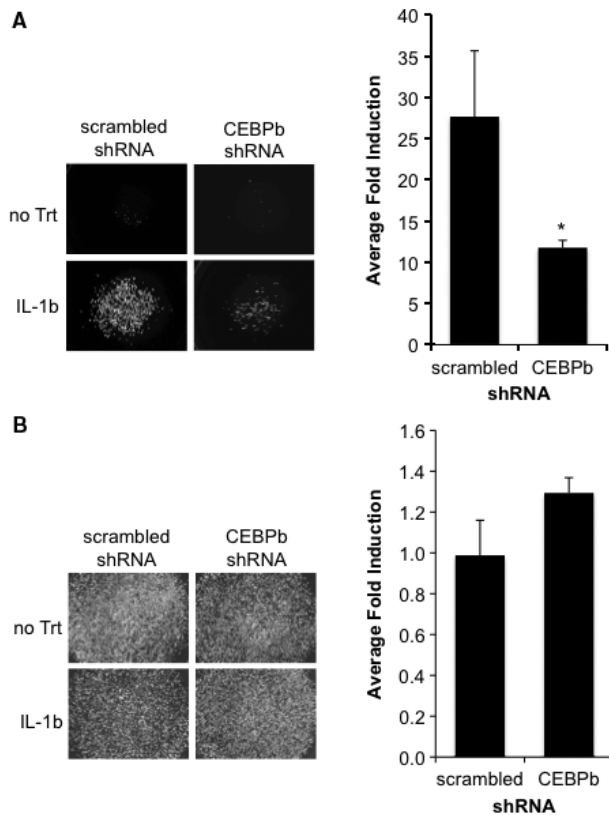


Figure 6. IL-1 β -mediated collagen invasion of RCC cells is dependent on CEBP β . Stable scrambled or CEBP β shRNA 786-0 cells were treated overnight in serum-free media either alone or containing 1 ng/mL IL-1 β . The next day, cells were harvested for the invasion assay (A) or migration assay (B) as described in the Methods and were allowed to invade or migrate for 24 h. Values are presented as average fold induction of untreated cells; $P < 0.05$.

tolerated compared to immunotherapy, tumors often develop resistance to these drugs. Furthermore, while the overall survival and progression-free survival rates of targeted therapies show improvement over cytokine therapy, curative rates are not superior [28]. Therefore, identifying new molecular targets in the biology of this cancer is important for the continued development of effective, well tolerated therapies.

In this report, we investigated the role of the inflammatory cytokine, IL-1 β , in RCC tumor cell invasiveness as a key characteristic of a tumor cell's progression to metastatic disease. Our results indicate that IL-1 β is sufficient to induce tumor cell invasion of RCC cells (Fig. 1). Moreover, IL-1 β potently induced the expression of MMP-1, MMP-3, and MMP-10 and mildly induced the expression of MT1-MMP (Fig. 2). Of note, high levels of MMP-10 correlate with advanced stages of RCC, and MMP-10 is a poor prognostic factor for survival [29]. Expression of MMP-1, MMP-3, MMP-10 was coordi-

nately upregulated by IL-1 β , with mRNA expression detected as early as 2 h posttreatment (Fig. 3). It is possible that these MMPs are upregulated in an early response to IL-1 β stimulation via direct interaction of CEBP β at the promoters of these genes. In support of this hypothesis, we previously characterized a CEBP β binding site at -2921 of the MMP-1 promoter and identified putative CEBP β binding sites in the promoters of MMP-3 and MMP-10 [15]. In addition, our data show that IL-1 β induced both CEBP β expression and phosphorylation at threonine 235, an event required for CEBP β transcriptional activity (Fig. 4; [14, 25]). Importantly, shRNA-mediated knockdown of CEBP β reduced IL-1 β -induced MMP-1, MMP-3, MMP-10, and MT1-MMP expression, thereby identifying these MMPs as downstream targets of CEBP β (Fig. 5).

In contrast to the secreted MMPs, IL-1 β induction of MT1-MMP was modest (Figs 2 and 3). This mild level of induction is likely due to the constitutive expression of MT1-MMP already present in these cells resulting from the lack of VHL expression and activation of HIF-2 α [16]. In addition, MT1-MMP mRNA was not induced by IL-1 β until 24 h, whereas the mRNAs of the other MMPs were induced as early as 2 h poststimulation (Fig. 3). These results suggest that unlike MMP-1, MMP-3, MMP-10, MT1-MMP may not be directly activated by CEBP β , but activated in response to a downstream target of CEBP β . One such candidate is IL-6, which is a well-described transcriptional target of CEBP β [30]. In support of this hypothesis, others have reported MT1-MMP as a downstream target of IL-6 signaling [31]. In addition, IL-6 was potently induced by IL-1 β in a CEBP β -dependent manner by as early as 4 h posttreatment in our experiments (data not shown).

Using RNA interference, we next demonstrated that IL-1 β -induced RCC tumor cell invasion required CEBP β (Fig. 6). To our knowledge, this is the first report to demonstrate a direct role for CEBP β in RCC tumor cell invasion. These data identify CEBP β as an important mediator of the response of tumor epithelial cells to an inflammatory microenvironment. In agreement, others have reported a direct correlation between increased CEBP β activity in RCC patient tumors and the presence of invasive disease [26]. Together, these findings provide rationale for designing RCC therapies that target the expression and/or activation of CEBP β .

The role for inflammation in the progression of RCC is implicated by several clinical observations. For example, high serum C-reactive protein (CRP), an acute phase inflammatory protein, is a poor prognostic indicator for RCC [32–34]. High serum levels of the proinflammatory cytokines, IL-1 β , IL-6, and TNF α , are also associated with advanced disease [10]. In addition, the

presence of TAMs in RCC tumors is considered a poor prognostic indicator [8, 9], and inflammatory paraneoplastic syndromes are often associated with advanced RCC [35]. The reported serum concentration of IL-1 β in metastatic RCC patients is approximately 500 ng/mL [10]. In our assays, we measured a dramatic increase in CEBP β and MMP expression in response to concentrations of IL-1 β as low as 0.1 ng/mL. Although in vitro and in vivo concentrations of IL-1 β cannot be directly compared, it is interesting to note the responsiveness of the RCC cells to low IL-1 β concentrations, which are far below that which is detected in patients. We postulate that the proinflammatory milieu expressed by TAMs in the tumor microenvironment has direct effects on the gene expression profiles of RCC tumor cells, thereby contributing to their progression to a metastatic phenotype. In summary, our results implicate the IL-1 β /CEBP β /MMP signaling pathway as a major mediator of RCC tumor cell invasion, and this pathway should be considered in the design of preclinical models of RCC to test its target-ability as an anti-metastatic therapy.

Conflict of Interest

None declared.

References

- Siegel, R., D. Naishadham, and A. Jemal. 2012. Cancer statistics, 2012. *CA Cancer J. Clin.* 62:10–29.
- Howlander, N., A. M. Noone, M. Krapcho, N. Neyman, R. Aminou, S. F. Altekruse, C. L. Kosary, J. Ruhl, Z. Tatalovich, H. Cho, A. Mariotto, M. P. Eisner, D. R. Lewis, H. S. Chen, E. J. Feuer, and K. A. Cronin, eds. 2012. SEER Cancer Statistics Review, 1975–2009 (Vintage 2009 Populations). National Cancer Institute, Bethesda, MD. Available at: http://seer.cancer.gov/csr/1975_2009_pops09/, based on November 2011 SEER data submission, posted to the SEER web site, April 2012.
- Motzer, R. J., P. Russo, D. M. Nanus, and W. J. Berg. 1997. Renal cell carcinoma. *Curr. Probl. Cancer* 21: 185–232.
- Finley, D. S., A. J. Pantuck, and A. S. Belldegrun. 2011. Tumor biology and prognostic factors in renal cell carcinoma. *Oncologist* 16:4–13.
- Grivennikov, S. I., F. R. Greten, and M. Karin. 2010. Immunity, inflammation, and cancer. *Cell* 140:883–899.
- Dinarello, C. A. 2010. Why not treat human cancer with interleukin-1 blockade? *Cancer Metastasis Rev.* 29:317–329.
- Ikemoto, S., N. Yoshida, K. Narita, S. Wada, T. Kishimoto, K. Sugimura, et al. 2003. Role of tumor-associated macrophages in renal cell carcinoma. *Oncol. Rep.* 10: 1843–1849.
- Komohara, Y., H. Hasita, K. Ohnishi, Y. Fujiwara, S. Suzu, M. Eto, et al. 2011. Macrophage infiltration and its prognostic relevance in clear cell renal cell carcinoma. *Cancer Sci.* 102:1424–1431.
- Toge, H., T. Inagaki, Y. Kojimoto, T. Shinka, and I. Hara. 2009. Angiogenesis in renal cell carcinoma: the role of tumor-associated macrophages. *Int. J. Urol.* 16:801–807.
- Yoshida, N., S. Ikemoto, K. Narita, K. Sugimura, S. Wada, R. Yasumoto, et al. 2002. Interleukin-6, tumour necrosis factor alpha and interleukin-1beta in patients with renal cell carcinoma. *Br. J. Cancer* 86:1396–1400.
- Hua, H., M. Li, T. Luo, Y. Yin, and Y. Jiang. 2011. Matrix metalloproteinases in tumorigenesis: an evolving paradigm. *Cell. Mol. Life Sci.* 68:3853–3868.
- Zahnow, C. A. 2009. CCAAT/enhancer-binding protein beta: its role in breast cancer and associations with receptor tyrosine kinases. *Expert Rev. Mol. Med.* 11:e12.
- Maxwell, P. H., M. S. Wiesener, G. W. Chang, S. C. Clifford, E. C. Vaux, M. E. Cockman, et al. 1999. The tumour suppressor protein VHL targets hypoxia-inducible factors for oxygen-dependent proteolysis. *Nature* 399: 271–275.
- Petrella, B. L., D. A. Armstrong, and M. P. Vincenti. 2011. CCAAT-enhancer-binding protein beta activation of MMP-1 gene expression in SW1353 cells: independent roles of extracellular signal-regulated and p90/ribosomal S6 kinases. *J. Cell. Physiol.* 226:3349–3354.
- Armstrong, D. A., L. N. Phelps, and M. P. Vincenti. 2009. CCAAT enhancer binding protein-beta regulates matrix metalloproteinase-1 expression in interleukin-1beta-stimulated A549 lung carcinoma cells. *Mol. Cancer Res.* 7:1517–1524.
- Petrella, B. L., J. Lohi, and C. E. Brinckerhoff. 2005. Identification of membrane type-1 matrix metalloproteinase as a target of hypoxia-inducible factor-2 alpha in von Hippel-Lindau renal cell carcinoma. *Oncogene* 24:1043–1052.
- Livak, K. J., and T. D. Schmittgen. 2001. Analysis of relative gene expression data using real-time quantitative PCR and the 2^{-Delta Delta C(T)} method. *Methods* 25:402–408.
- Petrella, B. L., and C. E. Brinckerhoff. 2006. Tumor cell invasion of von Hippel Lindau renal cell carcinoma cells is mediated by membrane type-1 matrix metalloproteinase. *Mol. Cancer* 5:66.
- Kessenbrock, K., V. Plaks, and Z. Werb. 2010. Matrix metalloproteinases: regulators of the tumor microenvironment. *Cell* 141:52–67.
- Klepzig, M., H. Sauer-Eppel, D. Jonas, and G. M. Oremek. 2008. Value of procollagen type 1 amino-terminal propeptide in patients with renal cell carcinoma. *Anticancer Res.* 28:2443–2446.
- Panková, K., D. Rösler, M. Novotný, and J. Brábek. 2010. The molecular mechanisms of transition between

- mesenchymal and amoeboid invasiveness in tumor cells. *Cell. Mol. Life Sci.* 67:63–71.
22. Lee, J. M., S. Dedhar, R. Kalluri, and E. W. Thompson. 2006. The epithelial-mesenchymal transition: new insights in signaling, development, and disease. *J. Cell Biol.* 172:973–981.
 23. Krishnamachary, B., D. Zagzag, H. Nagasawa, K. Rainey, H. Okuyama, J. H. Baek, et al. 2006. Hypoxia-inducible factor-1-dependent repression of E-cadherin in von Hippel-Lindau tumor suppressor-null renal cell carcinoma mediated by TCF3, ZFH1A, and ZFH1B. *Cancer Res.* 66:2725–2731.
 24. Gingras, D., and R. Béliveau. 2010. Emerging concepts in the regulation of membrane-type 1 matrix metalloproteinase activity. *Biochim. Biophys. Acta* 1803:142–150.
 25. Tsukada, J., Y. Yoshida, Y. Kominato, and P. E. Auron. 2011. The CCAAT/enhancer (C/EBP) family of basic-leucine zipper (bZIP) transcription factors is a multifaceted highly-regulated system for gene regulation. *Cytokine* 54:6–19.
 26. Oya, M., A. Horiguchi, R. Mizuno, K. Marumo, and M. Murai. 2003a. Increased activation of CCAAT/enhancer binding protein-beta correlates with the invasiveness of renal cell carcinoma. *Clin. Cancer Res.* 9:1021–1027.
 27. Kapoor, A. K., and S. J. Hotte. 2007. Current status of cytokine therapy in management of patients with metastatic renal cell carcinoma. *Can. Urol. Assoc. J.* 1: S28–S33.
 28. Singer, E. A., G. N. Gupta, and R. Srinivasan. 2011. Update on targeted therapies for clear cell renal cell carcinoma. *Curr. Opin. Oncol.* 23:283–289.
 29. Miyata, Y., T. Iwata, S. Maruta, S. Kanda, M. Nishikido, S. Koga, et al. 2007. Expression of matrix metalloproteinase-10 in renal cell carcinoma and its prognostic role. *Eur. Urol.* 52:791–797.
 30. Akira, S., H. Isshiki, T. Sugita, O. Tanabe, S. Kinoshita, Y. Nishio, et al. 1990. A nuclear factor for IL-6 expression (NF-IL6) is a member of a C/EBP family. *EMBO J.* 9:1897–1906.
 31. Feng, M., X. J. Cai, W. Zhang, X. L. Liu, L. Chen, Y. Zhang, et al. 2010. Interleukin-6 enhances matrix metalloproteinase-14 expression via the RAF-mitogen-activated protein kinase kinase-extracellular signal-regulated kinase 1/2-activator protein-1 pathway. *Clin. Exp. Pharmacol. Physiol.* 37:162–166.
 32. Ito, K., T. Asano, H. Yoshii, A. Satoh, M. Sumitomo, and M. Hayakawa. 2006. Impact of thrombocytosis and C-reactive protein elevation on the prognosis for patients with renal cell carcinoma. *Int. J. Urol.* 13: 1365–1370.
 33. Karakiewicz, P. I., G. C. Hutterer, Q. D. Trinh, C. Jeldres, P. Perrotte, A. Gallina, et al. 2007. C-reactive protein is an informative predictor of renal cell carcinoma-specific mortality: a European study of 313 patients. *Cancer* 110:1241–1247.
 34. Michigan, A., T. V. Johnson, and V. A. Master. 2011. Preoperative C-reactive protein level adjusted for comorbidities and lifestyle factors predicts overall mortality in localized renal cell carcinoma. *Mol. Diagn. Ther.* 15:229–234.
 35. Oya, M., A. Takayanagi, A. Horiguchi, R. Mizuno, M. Ohtsubo, K. Marumo, et al. 2003b. Increased nuclear factor-kappa B activation is related to the tumor development of renal cell carcinoma. *Carcinogenesis* 24:377–384.