

Connecting Faculty to Online Instructional Software: The Himmelfarb Health Sciences Library Experience

Tom Harrod - Himmelfarb Health Sciences Library

Overview:

- Use of online instruction software by Himmelfarb Health Sciences Library
- Drop-in library classes offered online & online library orientation for distance education classes
- Sessions to train faculty to use online instructional software

Getting Started:

- We began by offering a few online courses along side our traditional in-person 'drop-in' courses.
- As the popularity grew we increased our online offerings – during the Fall 2012 semester we offered classes on RefWorks as well as 3 different levels of Microsoft Excel online.
- We have also been embedded in a number of distance education classes in the School of Nursing, – as part of our expanding role in these classes is to offer multiple synchronous instructional sessions, including a general library orientation as well as a session on the use of the Refworks bibliographic management program.

Building On Our Success:

- As a result of our experiences using this software to teach library orientation and other online classes, we decided to offer classes to our faculty to help them to get started on the use of this software in their own instruction.
- These sessions are highly interactive and hands-on. We give faculty the chance to see what this software is like from both the instructor and student perspective.
- Additionally, we have given one-on-one guidance and support to faculty members getting started with Blackboard Collaborate

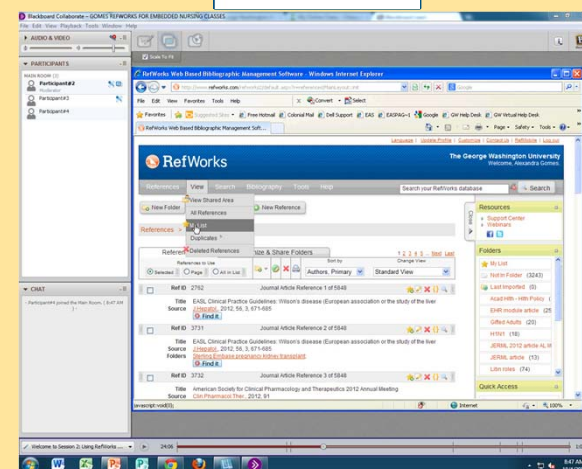
| | |
|--|--|
| <p>Judging Your Impact</p> <p>Want to know how to quantify the impact of your research? Or find the best journal for your manuscript? Then come join us for "Judging Your Impact: Quantifying Research Output." During this session we'll cover some of the most common ways to quantify the impact of articles, Journals, and We'll also explore the resources offered by the Himmelfarb library that can assist in this analysis. Through instruction and in-class examples, we'll look at the tools and metrics to help you assess the world of scholarship and evaluate the impact of your own publications.</p> | <p>Thursday Oct 11, 2012 3:00 pm - 4:00 pm Room: B103 Tom Harrod [Register]</p> |
| <p>Collaborate</p> <p>The software is called Collaborate – and using this program, you can:</p> <ul style="list-style-type: none"> • Easily produce online learning sessions for small or large groups • Use Powerpoint slides and other learning materials that you've already created for in-person classes • Elicit active feedback from your participants (e.g., polling, questions, etc.) • Invite anyone with an internet connection (not just those affiliated with GW) to participate in your sessions • Produce recorded sessions that can be shared with those unable to attend a live session <p>The Himmelfarb library is offering live, in-person, hands-on training sessions to introduce you to Collaborate and let you practice creating and running an online session yourself! You will learn some Collaborate basics and then you will have the opportunity to create and run a practice session using slides and learning materials that you've created. If you have any questions or concerns please email Tom at tp@gwu.edu.</p> | <p>Friday Oct 12, 2012 3:00 pm - 4:00 pm Room: B103 Tom Harrod [Register]</p> |
| <p>Access Level I</p> <p>Learn basic Access file structure and commands, and Access wizards. Knowledge of Windows is required!</p> | <p>Tuesday Oct 16, 2012 2:00 pm - 4:00 pm Room: B103 Catherine Sluder [Register]</p> |
| <p>Data Management Plans for Your Research</p> <p>*Over the last 10 years, many government funding agencies have included the creation of a data management plan (DMP) as a part of the research grant request process. DMPs spell out how data is to be</p> | <p>Thursday Oct 18, 2012 3:00 pm - 4:00 pm Room: WTBC Tom Harrod [Register]</p> |

Future Goals:

- Increase the frequency and variety of our online offerings
- Continue to offer instruction to faculty in the use of Blackboard Collaborate
- Provide technical support for faculty using this software.



Blackboard
collaborate



THE GEORGE WASHINGTON UNIVERS
WASHINGTON, DC