

Himmelfarb Health Sciences Library, The George Washington University
Health Sciences Research Commons

GW Biostatistics Center

George Washington University Biostatistics
Center

1-1-2016

**Significance of Epicardial and Intrathoracic Adipose Tissue
Volume among Type 1 Diabetes Patients in the DCCT/EDIC: A
Pilot Study.**

Sirous Darabian

Jye-Yu C Backlund

Patricia A Cleary

Nasim Sheidaee

Ionut Bebu

George Washington University

See next page for additional authors

Follow this and additional works at: https://hsrc.himmelfarb.gwu.edu/biostatscenter_facpubs



Part of the [Biostatistics Commons](#), [Endocrinology, Diabetes, and Metabolism Commons](#), and the [Epidemiology Commons](#)

APA Citation

Darabian, S., Backlund, J., Cleary, P., Sheidaee, N., Bebu, I., Lachin, J. M., Budoff, M., & DCCT/EDIC Research Group (2016). Significance of Epicardial and Intrathoracic Adipose Tissue Volume among Type 1 Diabetes Patients in the DCCT/EDIC: A Pilot Study.. *PLoS One*, 11 (7). <http://dx.doi.org/10.1371/journal.pone.0159958>

This Journal Article is brought to you for free and open access by the George Washington University Biostatistics Center at Health Sciences Research Commons. It has been accepted for inclusion in GW Biostatistics Center by an authorized administrator of Health Sciences Research Commons. For more information, please contact hsrc@gwu.edu.

Authors

Sirous Darabian, Jye-Yu C Backlund, Patricia A Cleary, Nasim Sheidaee, Ionut Bebu, John M. Lachin, Matthew J Budoff, and DCCT/EDIC Research Group

RESEARCH ARTICLE

Significance of Epicardial and Intrathoracic Adipose Tissue Volume among Type 1 Diabetes Patients in the DCCT/EDIC: A Pilot Study

Sirous Darabian¹, Jye-Yu C. Backlund², Patricia A. Cleary², Nasim Sheidaee¹, Ionut Bebu², John M. Lachin², Matthew J. Budoff^{1*}, DCCT/EDIC Research Group¹

1 Los Angeles Biomedical Research Institute, Torrance, California, United States of America, **2** The Biostatistics Center, the George Washington University, Rockville, Maryland, United States of America

☞ These authors contributed equally to this work.

✉ Current address: Division of Cardiology Los Angeles Biomedical Research Institute, Los Angeles, California, United States of America

¶ A complete list of participants in the DCCT/EDIC Research Group is presented in the Acknowledgments.

* mbudoff@labiomed.org



OPEN ACCESS

Citation: Darabian S, Backlund J-YC, Cleary PA, Sheidaee N, Bebu I, Lachin JM, et al. (2016) Significance of Epicardial and Intrathoracic Adipose Tissue Volume among Type 1 Diabetes Patients in the DCCT/EDIC: A Pilot Study. PLoS ONE 11(7): e0159958. doi:10.1371/journal.pone.0159958

Editor: Ali A Sovari, Cedars Sinai Medical Center, UNITED STATES

Received: December 28, 2015

Accepted: July 11, 2016

Published: July 26, 2016

Copyright: © 2016 Darabian et al. This is an open access article distributed under the terms of the [Creative Commons Attribution License](https://creativecommons.org/licenses/by/4.0/), which permits unrestricted use, distribution, and reproduction in any medium, provided the original author and source are credited.

Data Availability Statement: All relevant data are within the paper and its Supporting Information files.

Funding: The DCCT/EDIC has been supported by U01 Cooperative Agreement grants (1982–93, 2011–2017), and contracts (1982–2012) with the Division of Diabetes Endocrinology and Metabolic Diseases of the National Institute of Diabetes and Digestive and Kidney Disease (current grant numbers U01 DK094176 and U01 DK094157), and through support by the National Eye Institute, the National Institute of Neurologic Disorders and Stroke, the General Clinical Research Centers Program (1993–2007), and

Abstract

Introduction

Type 1 diabetes (T1DM) patients are at increased risk of coronary artery disease (CAD). This pilot study sought to evaluate the relationship between epicardial adipose tissue (EAT) and intra-thoracic adipose tissue (IAT) volumes and cardio-metabolic risk factors in T1DM.

Method

EAT/IAT volumes in 100 patients, underwent non-contrast cardiac computed tomography in the Diabetes Control and Complications Trial /Epidemiology of Diabetes Interventions and Complications (DCCT/EDIC) study were measured by a certified reader. Fat was defined as pixels' density of -30 to -190 Hounsfield Unit. The associations were assessed using—Pearson partial correlation and linear regression models adjusted for gender and age with inverse probability sample weighting.

Results

The weighted mean age was 43 years (range 32–57) and 53% were male. Adjusted for gender, Pearson correlation analysis showed a significant correlation between age and EAT/IAT volumes (both $p < 0.001$). After adjusting for gender and age, participants with greater BMI, higher waist to hip ratio (WTH), higher weighted HbA1c, elevated triglyceride level, and a history of albumin excretion rate of equal or greater than 300 mg/d ($AER \geq 300$) or end stage renal disease (ESRD) had significantly larger EAT/IAT volumes.

Clinical Translational Science Center Program (2006-present), Bethesda, Maryland, USA.

Competing Interests: The authors have declared that no competing interests exist.

Conclusion

T1DM patients with greater BMI, WTH ratio, weighted HbA1c level, triglyceride level and $AER \geq 300/ESRD$ had significantly larger EAT/IAT volumes. Larger sample size studies are recommended to evaluate independency.

Introduction

Several large studies have shown a high prevalence of cardiovascular disease (CVD) among participants with type 1 diabetes (T1DM). [1–3] While the incident of CVD in 35–44 years old age non-diabetic population has been reported as 0.1%, the Pittsburgh Epidemiology of Diabetes Complications (EDC) study reported 0.98% per year incidence of major coronary artery disease (CAD) events, among 28–38 years with T1DM. [4] Moreover, a minimum 10-fold increase in mortality due to cardiovascular disease among T1DM patients was reported. [5] Furthermore, there is an independent association between CAD events and major coronary artery disease risk factor including lipid profile, hypertension, smoking, and nephropathy and markers of inflammation among patients with T1DM. [4,6–8]

Adipose tissue, as the biggest endocrine organ in the body, is involved with the production of many bioactive molecules. Visceral adipose tissue and its adipose-tissue resident macrophages produce pro-inflammatory cytokines like tumor necrosis factor-alpha (TNF-alpha) and interleukin-6 (IL-6). These adipose tissue inflammation mediators may promote endothelial dysfunction as well as development and progression of atherosclerosis. Nevertheless, the role of other adipose tissue depot, such as epicardial adipose tissue (EAT) and intra-thoracic adipose tissue (IAT), play in the development of CAD has not been established. This pilot study sought to examine the relation between EAT and IAT volumes with selected cardio-metabolic risk factors, treatment method, and glycemic levels among T1DM patients.

Study Design and Method

Ethics statement

All human research was approved by the relevant institutional review boards, and conducted according to the Declaration of Helsinki. Institutional Review Board (IRB) approval was obtained by each of the individual clinical centers (Albert Einstein College of Medicine, Case Western Reserve University, Weill Cornell Medical College, Henry Ford Health System, International Diabetes Center, Joslin Diabetes Center, Massachusetts General Hospital, Mayo Foundation, Medical University of South Carolina, Northwestern University, University of California, San Diego, University of Iowa, University of Maryland School of Medicine, University of Michigan, University of Minnesota, University of Missouri, University of Pennsylvania, University of Pittsburgh, University of South Florida, University of Tennessee, University of Texas Southwestern Medical Center at Dallas, University of Toronto, University of Washington, University of Western Ontario, Vanderbilt University, Washington University, St. Louis, Yale University School of Medicine), Computed Tomography Reading Center (Harbor UCLA Research and Education Institute), and the Data Coordinating Center (the George Washington University Biostatistics Center). Written informed consent was provided by each of the study participants at the clinical centers. Consent for minor participants at study screening and randomization was provided by the minor's parent or legal guardian, as directed by local institutional guidelines.

Study population

This pilot study employed 100 selected participants who participated in the computed tomography (CT) protocol in the Diabetes Control and Complications Trial /Epidemiology of Diabetes Interventions and Complications (DCCT/EDIC) study. The details of the CT protocol have been previously described [9]. The 100 patients were obtained from a case-control sample of subjects who participated in a cardiac magnetic resonance imaging (cMRI) study and we had access on their non-contrast cardiac CT images. The minimal dataset containing EAT and IAT and selected covariates was available in the Supporting Information file “S1 File”.

The EDIC study [10] began in 1994 and is an ongoing, prospective observational follow-up of the DCCT cohort [11], which was a controlled clinical trial of intensive versus conventional diabetes treatment in 1441 subjects with type 1 diabetes. Based on the treatment protocols, patients were randomized into two groups of intensive and conventional treatment groups. The intensive treatment was designed to maintain glucose levels as close to the normal range as possible utilizing three or more daily insulin injections or an insulin infusion pump, with dose adjustments guided by frequent self-monitoring of blood glucose. Conventional treatment consisted of 1–2 daily insulin injections with no specific target level [12].

Assessment of Covariates

During DCCT, participants had an annual medical history and physical examination, and laboratory testing for fasting lipid levels, urinary albumin excretion rate (AER) and other risk factors for cardiovascular disease [11]. Glycated hemoglobin values (HbA1c) were measured quarterly during DCCT [13]. During EDIC, annual medical histories were obtained, physical exams performed and HbA1c levels were measured. Lipid profiles and urinary AER were measured in alternate years [10]. Due to the differences in the intervals between visits during DCCT and EDIC, weighted mean HbA1c was computed with weights proportional to the time interval between values.

Measurements of Adipose Tissue

All adipose tissue measurements were performed on the axial slices of non-contrast cardiac CT using GE Advantage Windows 4.6 Workstations “Fig 1”. EAT was defined as the adipose tissue between the surface of the heart and the visceral pericardium. EAT measurements were performed on axial images starting from 10mm above the superior extent of the left main ostium to the lower most slice containing a part of pericardial sac. The reader defined the boundary of the EAT by manually tracing the pericardium. IAT measurement was performed utilizing the same superior boundary as described above. The diaphragm defined the inferior boundary for IAT. The anterior border of the volume was defined by the chest wall and posterior border by the aorta, bronchi and esophagus. Adipose tissue present in the posterior mediastinum and para-aortic adipose tissue was not included in the IAT measurements. The observer had interactive access to the coronal and sagittal images as an assist for accurate measurements. Adipose tissue was discerned from the remainders with a threshold of -190 to -30 Hounsfield units. This method provides a high repeatability, and reproducibility rate. [14] One well-trained and certified cardiac CT reader, blinded to the patient characteristics, and other data, did all adipose tissue measurements.

Statistical Analysis

The outcomes of this study are epicardial and intra thoracic adipose tissue volumes (EAT and IAT). Clinical characteristics (predictors) were evaluated from the last available visit prior to or

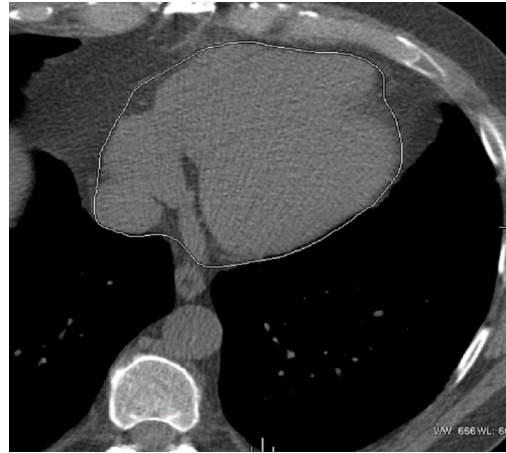


Fig 1. Pericardial Tracing to Define Epicardial Fat Volume.

doi:10.1371/journal.pone.0159958.g001

concurrent with the cardiac CT. The predictors are attained age, gender, attained T1DM duration, BMI, waist to hip ratio, total daily insulin dose, systolic and diastolic blood pressures, triglyceride level, high density lipoprotein (HDL) level, estimated glomerular filtration rate (eGFR), macroalbuminuria (albumin excretion rate (AER) equal or greater than 300 or end stage renal disease (ESRD) at any time, and weighted mean HbA1c.

All analyses were weighted using the inverse of the probability of selection in the sample of 100 out of the full cohort of 1205 subjects with CT scans during EDIC so as to yield unbiased estimates. [14, 15] The sampling probabilities were calculated for each subject in the pilot study based on gender and tertiles of age, six strata total. The Pearson correlation coefficients adjusting for gender were performed to assess the correlation between EAT/IAT and individual risk factors. In addition, the association of each covariate separately was assessed using a minimally adjusted model (adjusted for age and gender). After the inverse probability sample weight adjustment, the sample cohort of 100 shared the similar summary statistics for clinical characteristics with the full cohort (53% males, mean age 43 years, and mean HbA1c 8.1%) “Table 1”.

All analyses were performed using SAS software (version 9.2; SAS Institute, Cary, NC). P values <0.05 were considered statistically significant.

Results

Of the 100 patients, weighted mean aged 43 years (range 32–57), 53% were male “Table 1”. The mean EAT and IAT volumes were significantly different in women and men; 34 ± 15 and 41 ± 19 in women and 43 ± 20 and 60 ± 33 mm³ in men, respectively ($p = 0.016$ and $p = 0.0003$) “Fig 2”. Furthermore, EAT and IAT volumes were shown to correlate with age ($r = 0.35$ and 0.27 , respectively; $p = 0.0018$ and 0.014). No significant differences in volumes of EAT and IAT were noted based on original DCCT treatment groups, smoking, insulin dose or duration of T1DM. Weighted mean HbA1c during DCCT/EDIC had a significant positive correlation with both EAT and IAT volumes after adjusting for gender. After adjusting for age and gender, the analyses showed significant associations between EAT and IAT volumes and BMI, waist to hip ratio, triglycerides, weighted mean HbA1c, and $\text{AER} \geq 300$ /ESRD (ever) “Table 2”. No association was noted between EAT and IAT and HDL cholesterol, smoking, systolic, or diastolic blood pressures. No any interaction between each covariate and sex was significant in epicardial fat volume. Only one interaction between $\text{AER} > = 300$ /ESRD and sex reached the significance

Table 1. Similar Clinical Characteristics for Weighted Sample and the Full Cohort.

Variable [#]	Weighted Sample*		Full Cohort	
	Mean	S.D.	Mean	S.D.
N	100		1205	
Female (%)	47.5		47.5	
Attained Age (years)	43	6	43	7
Intensive Treatment (%)	55.2		49.5	
Insulin Dose (Units/kg/day) ‡	0.67	0.27	0.68	0.23
Attained Duration of IDDM (years)†	22.2	4.9	21.0	4.9
Mean Glycosylated hemoglobin during DCCT/EDIC (%)	8.1	0.9	8.1	1.1
Body Mass Index (kg/m ²)†	27.2	4.2	27.5	4.4
Waist/Hip Ratio†	0.85	0.07	0.85	0.09
HDL Cholesterol (mg/dl)†	54	12	56	15
LDL Cholesterol (mg/dl) ‡	110	27	111	29
Triglyceride (mg/dl)†	80	40	90	62
AER _≥ 300 or ESRD (%)†	9.2		8.5	
eGFR†	106	14	103	16
Anti-hypertensive (yes)(%)	30.7		33.6	
Lipid lowering medication (yes)(%)	30.1		22.2	
Epicardial Fat Volume (mm ³)	38.5	16.6	N/A	N/A
Intrathoracic Fat Volume (mm ³)	50.8	25.3	N/A	N/A

[#] At time of CT scan in 60 (60%) of subjects or at a prior visit in 40(40%) conducted within 20 months (average 4 months) before or after the CT scan.

N/A Not Applicable

* Adjusting for the inverse probability sample weight.

† At time of CT scan or prior visit.

‡ Measured at the last available visit prior to or at cardiac CT.

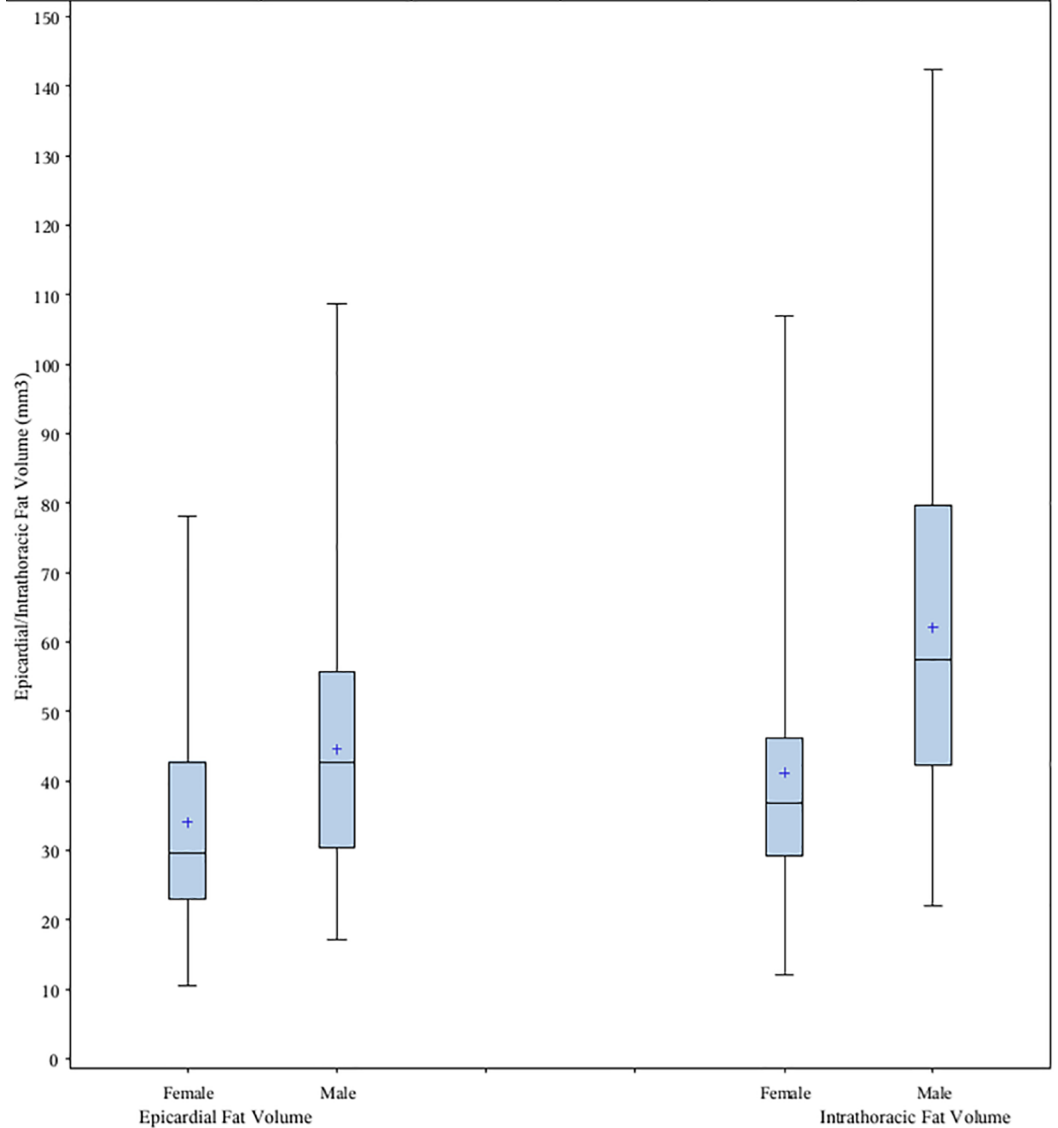
doi:10.1371/journal.pone.0159958.t001

level ($p = 0.0093$) in intrathoracic fat volume. Males patients who had $AER \geq 300/ESRD$ had the highest intrathoracic fat volume (88 mm^3 ; $N = 6$) while females patients who had $AER \geq 300/ESRD$ had the lowest intrathoracic fat volume (36 mm^3 ; $N = 2$). The most significant risk factors, waist, weighted mean HbA1c and triglycerides were adjusted in the multivariate model besides age and gender. Weighted mean HbA1c and triglycerides were no longer significant in the multivariate model while the waist remained significant (data not shown). In addition, while 31% of 1205 patients in full cohort had no coronary artery calcium deposit, 28% of our sample population showed zero coronary artery calcium score. After adjusting for gender and sample weight, both partial correlation coefficient and p-value between coronary artery calcium and EAT and IAT volumes was the same, 0.18 and 0.08, respectively. In addition, majority of subjects with type 1 diabetes in the full cohort were northern European ancestry (i.e. Caucasian), characteristics of type 1 diabetes. The fraction of other races in full cohort and sample were 3.3% and 3.0%, respectively.

Discussion

Not only has the volume of the fat, but also the body fat distribution associated with CAD. BMI and waist to hip ratio have been used frequently to assess the impact of the obesity on coronary artery disease. However, there are many studies pointing to the possibility that use of BMI may be responsible for the observed obesity paradox. Obesity paradox is a term indicating high BMI may be protective and associated with greater survival in certain populations.[15,16]

Value						
Max	78.05	108.60			107.00	142.31
Q3	42.69	55.72			46.09	79.67
Mean	34.00	44.51			41.10	62.04
Q2	29.50	42.68			36.67	57.52
Q1	22.92	30.33			29.18	42.27
Min	10.43	17.07			11.98	21.96



The box whisker plot displays min and max (lower and upper whiskers), first (Q1) and third (Q3) quartile (central rectangle), median (Q2) (the segment inside the rectangle), and mean (+ inside the rectangle).

Fig 2. Epicardial/Intrathoracic Fat Volume with Sample Weight Adjustment by Gender. The box whisker plot displays min and max (lower and upper whiskers), first (Q1) and third (Q3) quartile (central rectangle), median (the segment inside the rectangle), and mean (+ inside the rectangle).

doi:10.1371/journal.pone.0159958.g002

A recent published results of a Canadian cohort study over 54420 aged 40 or above participants, suggested that BMI acts as a misleading factor. In this study, adults with higher BMI survived more than their counterpart. But, DXA-derived body fat percentage revealed participants with higher fat percentage had worse outcomes.[17] In contrast, visceral adipose tissue and

Table 2. Pearson Correlation* and Minimally Adjusted Model[®]: Epicardial Fat Volume and Intrathoracic Fat Volume Associated with Selected Covariates.

Covariate prior to or at CT scan	Epicardial Fat Volume (mm ³)				Intrathoracic Fat Volume (mm ³)			
	Correlation		Model		Correlation		Model	
	coefficient	p-value	Estimate±SE	p-value	coefficient	p-value	Estimate±SE	p-value
Gender [†] (males vs. females)	-		9.2 ± 3.7	0.0159	-		19.3 ± 5.2	0.0003
Age [‡] (years)	0.35	0.0005	0.93 ± 0.29	0.0018	0.27	0.0069	1.1 ± 0.4	0.0140
Duration [‡] (years)	-0.18	0.0804	-0.5 ± 0.4	0.1799	-0.18	0.0680	-0.8 ± 0.5	0.1344
Treatment(Conventional vs. Intensive)	N/A	N/A	-4.0 ± 3.3	0.2384	N/A	N/A	-4.6 ± 5.1	0.3696
Smoking (yes vs. no)	N/A	N/A	8.1 ± 4.9	0.1040	N/A	N/A	9.8 ± 7.0	0.1627
BMI (kg/m ²)	0.39	< 0.0001	1.6 ± 0.4	<0.0001	0.40	<0.0001	2.4 ± 0.6	<0.0001
Waist (cm)	0.50	< 0.0001	0.80 ± 0.14	< 0.0001	0.50	< 0.0001	1.17 ± 0.20	< 0.0001
Waist/Hip Ratio [§]	0.58	< 0.0001	15.4 ± 2.4	< 0.0001	0.60	< 0.0001	23.8 ± 4.0	< 0.0001
Weighted HbA1C during DCCT/EDIC (%)	0.22	0.0271	4.4 ± 1.6	0.0075	0.18	0.0721	5.2 ± 2.2	0.0196
Insulin dose (units/kg/day)	0.04	0.6991	9.5 ± 5.7	0.0982	0.03	0.7847	10.6 ± 8.3	0.2075
Systolic blood pressure (mm Hg)	0.07	0.5057	0.11 ± 0.16	0.4803	0.07	0.4645	0.17 ± 0.23	0.4501
Lipid-HDL Cholesterol (mg/dl)	-0.21	0.0335	-0.33 ± 0.19	0.0795	-0.21	0.0403	-0.46 ± 0.28	0.1020
Lipid-LDL Cholesterol (mg/dl)	0.08	0.4358	-0.01 ± 0.07	0.8672	-0.07	0.4639	-0.02 ± 0.10	0.8125
Triglycerides (mg/dl)	0.21	0.0330	0.09 ± 0.04	0.0273	0.20	0.0475	0.13 ± 0.07	0.0579
eGFR	-0.23	0.0231	-0.08 ± 0.09	0.4113	-0.16	0.1117	-0.05 ± 0.13	0.7138
AER _{≥300} or ESRD (ever)	N/A	N/A	10.3 ± 5.1	0.0450	N/A	N/A	20.5 ± 9.5	0.0338
Anti-hypertensive (yes vs. no)	N/A	N/A	3.6 ± 3.6	0.3210	N/A	N/A	7.5 ± 5.4	0.1676
Lipid lowering medication (yes vs. no)	N/A	N/A	9.0 ± 4.0	0.0282	N/A	N/A	11.3 ± 6.2	0.0696

N/A Pearson correlation was Not Applicable for binary variables.

* Pearson partial correlation was adjusted for gender and corrected with sample weight.

[®] All models were adjusted for gender and age and corrected with sample weight unless otherwise indicated. A separate model was computed for each covariate.

[†] Model included gender only.

[‡] Model was adjusted for gender.

[§] Every 0.1 unit change of waist/hip ratio in the minimally adjusted model.

doi:10.1371/journal.pone.0159958.t002

more specifically EAT and IAT showed a stronger association with cardiovascular health and events. [18–20] While, based on the current guidelines, a non-contrast cardiac CT and evaluation of coronary artery calcium score is recommended for screening of CAD among diabetic patients, it is possible to take the advantage of having EAT and IAT volumes to assess the risk of the future events. A study in 998 apparently healthy individuals, who were randomly selected from 6814 Multi-Ethnic Study of Atherosclerosis (MESA) participants revealed that deposit of fat around the heart strongly predicts incident coronary artery disease, independent of the BMI and major CAD risk factors.[21] Noteworthy, in contrast to many previous studies, a multi-centric study was not able to find any association between epicardial fat and the presence and extent of CAC by CT, presence of obstructive CAD by cardiac catheterization, or myocardial perfusion abnormalities by SPECT. [22] However, different from most of the other studies and the standards that was defined earlier, a range of -45 to -195 HU was used to define the fat. Based on the detailed studies, current standards recommended -30 to -190 HU for fat measurement.[23,24] It means they did not considered any mass between -30 to -45 as fat. Since this usually includes a significant mass inside the pericardium, it is possible that the difference made the results very different from the other studies. We have considered a range of -30 to -190 HU for fat.

Previous studies showed significant differences between men and women in both the fat metabolism and pattern of fat distribution. Usually, women have a greater body fat proportion than men. Also, subcutaneous fat storage is greater in female than male, while visceral fat deposits are more prominent in men [25]. Our pilot study showed male gender had a strong association with greater volumes of EAT and IAT. Also, it showed among T1DM, independent of age, males have greater EAT and IAT volumes than females. The difference in the pattern of fat distribution will help to detect patients with greater risk of cardiovascular disease.

Obesity and greater body fat volume have been considered one of the primary adverse effects of insulin therapy in both Type 1 and 2 diabetes.[26,27] In the Diabetes Control and Complications Trial, whereas waist to hip ratios did not differ, T1DM patients receiving intensive insulin therapy significantly gained body weight compare to patients receiving conventional therapy. Our study shows no association between total daily insulin dose and EAT or IAT fat volumes. Likewise, neither the DCCT treatment assignment (intensive vs. conventional) nor the duration of T1DM showed a relation with EAT or IAT volumes. However, interestingly, weighted HbA1C during DCCT/EDIC showed to have a positive association with these visceral fat volumes.

Limitations

We were not able to evaluate the independent association of EAT and IAT volumes with more CVD risk factors due to the small sample size.

Conclusion

Among T1DM patients, accumulation of adipose tissue in epicardial and intra-thoracic spaces were highly associated with greater BMI, bigger waist to hip ratio, greater weighted HbA1c, elevated triglyceride level and a history of AER \geq 300 or ESRD). Male individuals with T1DM had significantly larger volumes of EAT and IAT. Further studies with larger size and considering hard events is advised.

Supporting Information

S1 File. Minimal data set with EAT and IAT and selected covariates.
(PDF)

Acknowledgments

The authors acknowledge the data processing and technical assistance of Wanyu Hsu at the Biostatistics Center, the George Washington University.

Industry contributors have had no role in the DCCT/EDIC study but have provided free or discounted supplies or equipment to support participants' adherence to the study: Abbott Diabetes Care (Alameda, CA), Animas (Westchester, PA), Bayer Diabetes Care (North America Headquarters, Tarrytown, NY), Becton Dickinson (Franklin Lakes, NJ), Eli Lilly (Indianapolis, IN), Extend Nutrition (St. Louis, MO), Insulet Corporation (Bedford, MA), Lifescan (Milpitas, CA), Medtronic Diabetes (Minneapolis, MN), Nipro Home Diagnostics (Ft. Lauderdale, FL), Nova Diabetes Care (Billerica, MA), Omron (Shelton, CT), Perrigo Diabetes Care (Allegan, MI), Roche Diabetes Care (Indianapolis, IN), and Sanofi-Aventis (Bridgewater, NJ).

The DCCT/EDIC Study Research Group

The following persons and institutions participated in the DCCT/EDIC Study Research Group:

Study Chairpersons—D.M. Nathan, B. Zinman (vice-chair), O. Crofford (past), S. Genuth (past)

Clinical Centers

Albert Einstein College of Medicine—J. Brown-Friday (past), J. Crandall (past), H. Engel (past), S. Engel (past), H. Martinez (past), M. Phillips (past), M. Reid (past), H. Shamoon (past), J. Sheindlin (past)

Case Western Reserve University—R. Gubitosi-Klug, L. Mayer, S. Pendegast, H. Zegarra, D. Miller, L. Singerman, S. Smith-Brewer, M. Novak, J. Quin (past), Saul Genuth (past), M. Palmert (past), E. Brown (past), J. McConnell (past), P. Pugsley (past), P. Crawford (past), W. Dahms (deceased)

Weill Cornell Medical College—D. Brillon, M.E. Lackaye, S. Kiss, R. Chan, A. Orlin, M. Rubin, V. Reppucci (past), T. Lee (past), M. Heinemann (past), S. Chang (past), B. Levy (past), L. Jovanovic (past), M. Richardson (past), B. Bosco (past), A. Dwoskin (past), R. Hanna (past), S. Barron (past), R. Campbell (deceased)

Henry Ford Health System—A. Bhan, D. Kruger, J.K. Jones, P.A. Edwards, A. Bhan, J.D. Carey, E. Angus, A. Thomas, A. Galprin (past), M. McLellan (past), F. Whitehouse (past)

International Diabetes Center—R. Bergenstal, M. Johnson, K. Gunyou, L. Thomas, J. Laechelt, P. Hollander (past), M. Spencer (past), D. Kendall (past), R. Cuddihy (past), P. Callahan (past), S. List (past), J. Gott (past), N. Rude (past), B. Olson (past), M. Franz (past), G. Castle (past), R. Birk (past), J. Nelson (past), D. Freking (past), L. Gill (past), W. Mestrezat (past), D. Etzwiler (deceased), K. Morgan (deceased)

Joslin Diabetes Center—L.P. Aiello, E. Golden, P. Arrigg, V. Asuquo, R. Beaser, L. Bestourous, J. Cavallerano, R. Cavicchi, O. Ganda, O. Hamdy, R. Kirby, T. Murtha, D. Schlossman, S. Shah, G. Sharuk, P. Silva, P. Silver, M. Stockman, J. Sun, E. Weimann, H. Wolpert, L.M. Aiello (past), A. Jacobson (past), L. Rand (past), J. Rosenzweig (past)

Massachusetts General Hospital—D.M. Nathan, M.E. Larkin, M. Christofi, K. Folino, J. Godine, P. Lou, C. Stevens, E. Anderson (past), H. Bode (past), S. Brink (past), C. Cornish (past), D. Cros (past), L. Delahanty (past), A. deManbey (past), C. Haggan (past), J. Lynch (past), C. McKitrick (past), D. Norman (past), D. Moore (past), M. Ong (past), C. Taylor (past), D. Zimble (past), S. Crowell (past), S. Fritz (past), K. Hansen (past), C. Gauthier-Kelly (past)

Mayo Foundation—F.J. Service, G. Ziegler, R. Colligan (past), L. Schmidt (past), B. French (past), R. Woodwick (past), R. Rizza (past), W.F. Schwenk (past), M. Haymond (past), J. Pach (past), J. Mortenson (past), B. Zimmerman (deceased), A. Lucas (deceased)

Medical University of South Carolina—L. Luttrell, M. Lopes-Virella, S. Caulder, C. Pittman, N. Patel, K. Lee, M. Nutaitis, J. Fernandes, K. Hermayer, S. Kwon, A. Blevins, J. Parker, J. Colwell (past), D. Lee (past), J. Soule (past), P. Lindsey (past), M. Bracey (past), A. Farr (past), S. Elsing (past), T. Thompson (past), J. Selby (past), T. Lyons (past), S. Yacoub-Wasef (past), M. Szpiech (past), D. Wood (past), R. Mayfield (past)

Northwestern University—M. Molitch, D. Adelman, S. Colson, L. Jampol, A. Lyon, M. Gill, Z. Strugula, L. Kaminski, R. Mirza, E. Simjanoski, D. Ryan, C. Johnson, A. Wallia, S. Ajroud-Driss, P. Astelford, N. Leloudes, A. Degillio, B. Schaefer (past)

University of California, San Diego—S. Mudaliar, G. Lorenzi, M. Goldbaum, K. Jones (past), M. Prince (past), M. Swenson (past), I. Grant (past), R. Reed (past), R. Lyon (past), O. Kolterman (past), M. Giotta (past), T. Clark (past), G. Friedenberg (deceased)

University of Iowa—W.I. Sivitz, B. Vittetoe, J. Kramer, M. Bayless (past), R. Zeitler (past), H. Schrott (past), N. Olson (past), L. Snetselaar (past), R. Hoffman (past), J. MacIndoe (past), T. Weingeist (past), C. Fountain (past)

University of Maryland School of Medicine—S. Mendley, S. Johnsonbaugh, M. Patronas, M. Carney, P. Salemi (past), R. Liss (past), M. Hebdon (past), D. Counts (past), T. Donner (past), J. Gordon (past), R. Hemady (past), A. Kowarski (past), D. Ostrowski (past), S. Steidl (past), B. Jones (past)

University of Michigan—W.H. Herman, C.L. Martin, R. Pop-Busui, D.A. Greene (past), M.J. Stevens (past), N. Burkhardt (past), T. Sandford (past), J. Floyd (deceased)

University of Minnesota—J. Bantle, N. Wimmergren, J. Terry, D. Koozekanani, S. Montezuma, B. Rogness (past), M. Mech (past), T. Strand (past), J. Olson (past), L. McKenzie (past), C. Kwong (past), F. Goetz (past), R. Warhol (past)

University of Missouri—D. Hainsworth, D. Goldstein, S. Hitt, J. Giangiaccomo (deceased)

University of New Mexico—D.S. Schade, J.L. Canady, M.R. Burge, A. Das, R.B. Avery, L.H. Ketai, J.E. Chapin, M.L. Schluter (past) J. Rich (past), C. Johannes (past), D. Hornbeck (past)

University of Pennsylvania—M. Schutta, P.A. Bourne, A. Brucker, S. Braunstein (past), S. Schwartz (past), B.J. Maschak-Carey (past), L. Baker (deceased)

University of Pittsburgh—T. Orchard, L. Cimino, T. Songer, B. Doft, S. Olson, D. Becker, D. Rubinstein, R.L. Bergren, J. Fruit, R. Hyre, C. Palmer, N. Silvers (past), L. Lobes (past), P. Paczan Rath (past), P.W. Conrad (past), S. Yalamanchi (past), J. Wesche (past), M. Bratkowski (past), S. Arslanian (past), J. Rinkoff (past), J. Warnicki (past), D. Curtin (past), D. Steinberg (past), G. Vagstad (past), R. Harris (past), L. Steranchak (past), J. Arch (past), K. Kelly (past), P. Ostrosaka (past), M. Guiliani (past), M. Good (past), T. Williams (past), K. Olsen (past), A. Campbell (past), C. Shipe (past), R. Conwit (past), D. Finegold (past), and M. Zaucha (past), A. Drash (deceased)

University of South Florida—A. Morrison, J.I. Malone, M.L. Bernal, P.R. Pavan, N. Grove, E. A. Tanaka (past), D. McMillan (past), J. Vaccaro-Kish (past), L. Babbione (past), H. Solc (past), T.J. DeClue (past)

University of Tennessee—S. Dagogo-Jack, C. Wigley, H. Ricks, A. Kitabchi, E. Chaum, M.B. Murphy (past), S. Moser (past), D. Meyer (past), A. Iannacone (past), S. Yoser (past), M. Bryer-Ash (past), S. Schussler (past), H. Lambeth (past)

University of Texas Southwestern Medical Center at Dallas—P. Raskin, S. Strowig, M. Basco (past), S. Cercone (deceased)

University of Toronto—B. Zinman, A. Barnie, R. Devenyi, M. Mandelcorn, M. Brent, S. Rogers, A. Gordon, N. Bakshi, B. Perkins, L. Tuason, F. Perdikaris, R. Ehrlich (past), D. Daneman (past), K. Perlman (past), S. Ferguson (past)

University of Washington—J. Palmer, R. Fahlstrom, I.H.de Boer, J. Kinyoun, L. Van Ottingham, S. Catton (past), J. Ginsberg (past)

University of Western Ontario—C. McDonald, J. Harth, M. Driscoll, T. Sheidow, J. Mahon (past), C. Canny (past), D. Nicolle (past), P. Colby (past), J. Dupre (past), I. Hramiak (past), N. W. Rodger (past), M. Jenner (past), T. Smith (past), W. Brown (past)

Vanderbilt University—M. May, J. Lipps Hagan, A. Agarwal, T. Adkins, R. Lorenz (past), S. Feman (past), L. Survant (deceased)

Washington University, St. Louis—N.H. White, L. Levandoski, G. Grand, M. Thomas, D. Joseph, K. Blinder, G. Shah, D. Burgess (past), I. Boniuk (deceased), J. Santiago (deceased)

Yale University School of Medicine—W. Tamborlane, P. Gatcomb, K. Stoessel, P. Ramos, K. Fong, P. Ossorio, J. Ahern (past)

Clinical Coordinating Center

Case Western Reserve University—R. Gubitosi-Klug, C. Beck, S. Genuth, J. Quin (past), P. Gaston (past), M. Palmert (past), R. Trail (past), W. Dahms (deceased)

Data Coordinating Center

George Washington University, The Biostatistics Center—J. Lachin, P. Cleary, J. Backlund, I. Bebu, B. Braffett, L. Diminick, X. Gao, W. Hsu, K. Klumpp, M. Larsen, P. McGee (past), W. Sun (past), S. Villavicencio (past), K. Anderson (past), L. Dews (past), Naji Younes (past), B. Rutledge (past), K. Chan (past), D. Rosenberg (past), B. Petty (past), A. Determan (past), D. Kenny (past), C. Williams (deceased)

National Institute of Diabetes and Digestive and Kidney Disease

National Institute of Diabetes and Digestive and Kidney Disease Program Office—C. Cowie, C. Siebert (past)

Central Units

Central Biochemistry Laboratory (University of Minnesota)—M. Steffes, V. Arends, J. Bucksa (past), M. Nowicki (past), B. Chavers (past)

Central Carotid Ultrasound Unit (New England Medical Center)—D. O’Leary, J. Polak, A. Harrington, L. Funk (past)

Central ECG Reading Unit (University of Minnesota)—R. Crow (past), B. Gloeb (past), S. Thomas (past), C. O’Donnell (past)

Central ECG Reading Unit (Wake Forest School of Medicine)—E.Z. Soliman, Z.M. Zhang, Y. Li, C. Campbell, L. Keasler, S. Hensley, J. Hu, M. Barr, T. Taylor, R. Prineas (past)

Central Neurologic Reading Center (University of Michigan, Mayo Clinic, Southern Illinois University)—E.L. Feldman (past), J.W. Albers (past), P. Low (past), C. Sommer (past), K. Nickander (past), T. Spiegelberg (past), M. Pfeifer (past), M. Schumer (past), M. Moran (past), J. Farquhar (past)

Central Neuropsychological Coding Unit (University of Pittsburgh)—C. Ryan (past), D. Sandstrom (past), T. Williams (past), M. Geckle (past), E. Cupelli (past), F. Thoma (past), B. Burzuk (past), T. Woodfill (past)

Central Ophthalmologic Reading Center (University of Wisconsin)—R. Danis, B. Blodi, D. Lawrence, H. Wabers, S. Gangaputra (past), S. Neill (past), M. Burger (past), J. Dingedine (past), V. Gama (past), R. Sussman (past), M. Davis (past), L. Hubbard (past)

Computed Tomography Reading Center (Harbor UCLA Research and Education Institute)—M. Budoff, S. Darabian, P. Rezaeian, N. Wong (past), M. Fox (past), R. Oudiz (past), L. Kim (past), R. Detrano (past)

Audiometry Reading Center (EpiSense, University of Wisconsin)—K. Cruickshanks, D. Dalton, K. Bainbridge (*National Institute on Deafness and Other Communication Disorders*)

Cardiac MR Reading Center (Johns Hopkins University, National Heart Lung and Blood Institute)—J. Lima, D. Bluemke, E. Turkbey, R. J. van der Geest (past), C. Liu (past), A. Malayeri (past), A. Jain (past), C. Miao (past), H. Chahal (past), R. Jarboe (past)

Editor, EDIC Publications—D.M. Nathan

Collaborators

Advanced Glycation End Products (Case Western Reserve University)—V. Monnier, D. Sell, C. Strauch

Biomarkers (Cleveland Clinic)—S. Hazen, A. Pratt, W. Tang

Central Obesity Study (University of Washington)—J. Brunzell, J. Purnell

Epigenetics (Beckman Research Institute of City of Hope Medical Center)—R. Natarajan, F. Miao, L. Zhang, Z. Chen

Genetic Studies (Hospital for Sick Children)—A. Paterson, A. Boright, S. Bull, L. Sun, S. Scherer (past)

Molecular Risk Factors Program Project (Medical University of South Carolina)—M. Lopes-Virella, T.J. Lyons, A. Jenkins, R. Klein, G. Virella, A. Jaffa, R. Carter, J. Stoner, W.T. Garvey (past), D. Lackland (past), M. Brabham (past), D. McGee (past), D. Zheng (past), R. K. Mayfield (past)

SCOUT (Veralight)—J. Maynard (past)

UroEDIC (University of Washington, University of Michigan)—H. Wessells, A. Sarma, A. Jacobson, R. Dunn, S. Holt, J. Hotaling, C. Kim, Q. Clemens, J. Brown (past), K. McVary (past)

Funding/Support

The DCCT/EDIC has been supported by U01 Cooperative Agreement grants (1982–93, 2011–2017), and contracts (1982–2012) with the Division of Diabetes Endocrinology and Metabolic Diseases of the National Institute of Diabetes and Digestive and Kidney Disease (current grant numbers U01 DK094176 and U01 DK094157), and through support by the National Eye Institute, the National Institute of Neurologic Disorders and Stroke, the General Clinical Research Centers Program (1993–2007), and Clinical Translational Science Center Program (2006–present), Bethesda, Maryland, USA.

Trial Registration: clinicaltrials.gov NCT00360815 and NCT00360893.

Author Contributions

Conceived and designed the experiments: JL MB PC. Performed the experiments: SD MB NS. Analyzed the data: JYB IB JL PC. Wrote the paper: SD JYB JL MB.

References

1. Deckert T, Poulsen JE, Larsen M. Prognosis of diabetics with diabetes onset before the age of thirty-one. II. Factors influencing the prognosis. *Diabetologia*. 1978; 14(6):371–7. PMID: [669101](https://pubmed.ncbi.nlm.nih.gov/669101/).
2. Dorman JS, Tajima N, LaPorte RE, Becker DJ, Cruickshanks KJ, Wagener DK, et al. The Pittsburgh Insulin-Dependent Diabetes Mellitus (IDDM) Morbidity and Mortality Study: case-control analyses of risk factors for mortality. *Diabetes care*. 1985; 8 Suppl 1:54–60. PMID: [4053954](https://pubmed.ncbi.nlm.nih.gov/4053954/).
3. Moss SE, Klein R, Klein BE. Cause-specific mortality in a population-based study of diabetes. *American journal of public health*. 1991; 81(9):1158–62. PMID: [1951827](https://pubmed.ncbi.nlm.nih.gov/1951827/); PubMed Central PMCID: PMC1405646.
4. Orchard TJ, Olson JC, Erbey JR, Williams K, Forrest KY, Smithline Kinder L, et al. Insulin resistance-related factors, but not glycemia, predict coronary artery disease in type 1 diabetes: 10-year follow-up data from the Pittsburgh Epidemiology of Diabetes Complications Study. *Diabetes care*. 2003; 26(5):1374–9. PMID: [12716791](https://pubmed.ncbi.nlm.nih.gov/12716791/).
5. Dorman JS, Laporte RE, Kuller LH, Cruickshanks KJ, Orchard TJ, Wagener DK, et al. The Pittsburgh insulin-dependent diabetes mellitus (IDDM) morbidity and mortality study. Mortality results. *Diabetes*. 1984; 33(3):271–6. PMID: [6698317](https://pubmed.ncbi.nlm.nih.gov/6698317/).
6. Forrest KY, Becker DJ, Kuller LH, Wolfson SK, Orchard TJ. Are predictors of coronary heart disease and lower-extremity arterial disease in type 1 diabetes the same? A prospective study. *Atherosclerosis*. 2000; 148(1):159–69. PMID: [10580182](https://pubmed.ncbi.nlm.nih.gov/10580182/).
7. Orchard TJ, Costacou T, Kretowski A, Nesto RW. Type 1 diabetes and coronary artery disease. *Diabetes care*. 2006; 29(11):2528–38. doi: [10.2337/dc06-1161](https://doi.org/10.2337/dc06-1161) PMID: [17065698](https://pubmed.ncbi.nlm.nih.gov/17065698/).
8. Nathan DM, Cleary PA, Backlund JY, Genuth SM, Lachin JM, Orchard TJ, et al. Intensive diabetes treatment and cardiovascular disease in patients with type 1 diabetes. *The New England journal of medicine*. 2005; 353(25):2643–53. doi: [10.1056/NEJMoa052187](https://doi.org/10.1056/NEJMoa052187) PMID: [16371630](https://pubmed.ncbi.nlm.nih.gov/16371630/); PubMed Central PMCID: PMC2637991.
9. Cleary PA, Orchard TJ, Genuth S, Wong ND, Detrano R, Backlund JY, et al. The effect of intensive glycaemic treatment on coronary artery calcification in type 1 diabetic participants of the Diabetes Control and Complications Trial/Epidemiology of Diabetes Interventions and Complications (DCCT/EDIC)

- Study. *Diabetes*. 2006; 55(12):3556–65. doi: [10.2337/db06-0653](https://doi.org/10.2337/db06-0653) PMID: [17130504](https://pubmed.ncbi.nlm.nih.gov/17130504/); PubMed Central PMCID: [PMC2701297](https://pubmed.ncbi.nlm.nih.gov/PMC2701297/).
10. Epidemiology of Diabetes Interventions and Complications (EDIC). Design, implementation, and preliminary results of a long-term follow-up of the Diabetes Control and Complications Trial cohort. *Diabetes care*. 1999; 22(1):99–111. PMID: [10333910](https://pubmed.ncbi.nlm.nih.gov/10333910/); PubMed Central PMCID: [PMC2745938](https://pubmed.ncbi.nlm.nih.gov/PMC2745938/).
 11. The Diabetes Control and Complications Trial (DCCT). Design and methodologic considerations for the feasibility phase. The DCCT Research Group. *Diabetes*. 1986; 35(5):530–45. PMID: [2869996](https://pubmed.ncbi.nlm.nih.gov/2869996/).
 12. Kim C, Cleary PA, Cowie CC, Braffett BH, Dunn RL, Larkin ME, et al. Effect of glycemic treatment and microvascular complications on menopause in women with type 1 diabetes in the Diabetes Control and Complications Trial/Epidemiology of Diabetes Interventions and Complications (DCCT/EDIC) cohort. *Diabetes care*. 2014; 37(3):701–8. doi: [10.2337/dc13-1746](https://doi.org/10.2337/dc13-1746) PMID: [24170751](https://pubmed.ncbi.nlm.nih.gov/24170751/); PubMed Central PMCID: [PMC3931380](https://pubmed.ncbi.nlm.nih.gov/PMC3931380/).
 13. Feasibility of centralized measurements of glycosylated hemoglobin in the Diabetes Control and Complications Trial: a multicenter study. The DCCT Research Group. *Clinical chemistry*. 1987; 33(12):2267–71. PMID: [3319291](https://pubmed.ncbi.nlm.nih.gov/3319291/).
 14. Nakazato R, Shmilovich H, Tamarappoo BK, Cheng VY, Slomka PJ, Berman DS, et al. Interscan reproducibility of computer-aided epicardial and thoracic fat measurement from noncontrast cardiac CT. *J Cardiovasc Comput Tomogr*. 2011; 5(3):172–9. doi: [10.1016/j.jcct.2011.03.009](https://doi.org/10.1016/j.jcct.2011.03.009) PMID: [21511558](https://pubmed.ncbi.nlm.nih.gov/21511558/); PubMed Central PMCID: [PMC3114269](https://pubmed.ncbi.nlm.nih.gov/PMC3114269/).
 15. Curtis JP, Selzer JG, Wang Y, Rathore SS, Jovin IS, Jadbabaie F, et al. The obesity paradox: body mass index and outcomes in patients with heart failure. *Arch Intern Med*. 2005; 165(1):55–61. doi: [10.1001/archinte.165.1.55](https://doi.org/10.1001/archinte.165.1.55) PMID: [15642875](https://pubmed.ncbi.nlm.nih.gov/15642875/).
 16. Gruberg L, Mercado N, Milo S, Boersma E, Disco C, van Es GA, et al. Impact of body mass index on the outcome of patients with multivessel disease randomized to either coronary artery bypass grafting or stenting in the ARTS trial: The obesity paradox II? *Am J Cardiol*. 2005; 95(4):439–44. doi: [10.1016/j.amjcard.2004.10.007](https://doi.org/10.1016/j.amjcard.2004.10.007) PMID: [15695125](https://pubmed.ncbi.nlm.nih.gov/15695125/).
 17. Padwal R, Leslie WD, Lix LM, Majumdar SR. Relationship Among Body Fat Percentage, Body Mass Index, and All-Cause Mortality: A Cohort Study. *Ann Intern Med*. 2016; 164(8):532–41. doi: [10.7326/M15-1181](https://doi.org/10.7326/M15-1181) PMID: [26954388](https://pubmed.ncbi.nlm.nih.gov/26954388/).
 18. Nicklas BJ, Penninx BW, Cesari M, Kritchevsky SB, Newman AB, Kanaya AM, et al. Association of visceral adipose tissue with incident myocardial infarction in older men and women: the Health, Aging and Body Composition Study. *American journal of epidemiology*. 2004; 160(8):741–9. doi: [10.1093/aje/kwh281](https://doi.org/10.1093/aje/kwh281) PMID: [15466496](https://pubmed.ncbi.nlm.nih.gov/15466496/).
 19. Yusuf S, Hawken S, Ounpuu S, Bautista L, Franzosi MG, Commerford P, et al. Obesity and the risk of myocardial infarction in 27,000 participants from 52 countries: a case-control study. *Lancet*. 2005; 366(9497):1640–9. doi: [10.1016/S0140-6736\(05\)67663-5](https://doi.org/10.1016/S0140-6736(05)67663-5) PMID: [16271645](https://pubmed.ncbi.nlm.nih.gov/16271645/).
 20. Wang T, Liu Q, Liu C, Sun L, Li D, Liu A, et al. Correlation of Echocardiographic Epicardial Fat Thickness with Severity of Coronary Artery Disease in Patients with Acute Myocardial Infarction. *Echocardiography*. 2014. doi: [10.1111/echo.12545](https://doi.org/10.1111/echo.12545) PMID: [24645963](https://pubmed.ncbi.nlm.nih.gov/24645963/).
 21. Ding J, Kritchevsky SB, Harris TB, Burke GL, Detrano RC, Szklo M, et al. The association of pericardial fat with calcified coronary plaque. *Obesity*. 2008; 16(8):1914–9. doi: [10.1038/oby.2008.278](https://doi.org/10.1038/oby.2008.278) PMID: [18535554](https://pubmed.ncbi.nlm.nih.gov/18535554/).
 22. Tanami Y, Jinzaki M, Kishi S, Matheson M, Vavere AL, Rochitte CE, et al. Lack of association between epicardial fat volume and extent of coronary artery calcification, severity of coronary artery disease, or presence of myocardial perfusion abnormalities in a diverse, symptomatic patient population: results from the CORE320 multicenter study. *Circ Cardiovasc Imaging*. 2015; 8(3):e002676. doi: [10.1161/CIRCIMAGING.114.002676](https://doi.org/10.1161/CIRCIMAGING.114.002676) PMID: [25752899](https://pubmed.ncbi.nlm.nih.gov/25752899/); PubMed Central PMCID: [PMC355954](https://pubmed.ncbi.nlm.nih.gov/PMC355954/).
 23. Sjostrom L, Kvist H, Cederblad A, Tylén U. Determination of total adipose tissue and body fat in women by computed tomography, 40K, and tritium. *Am J Physiol*. 1986; 250(6 Pt 1):E736–45. PMID: [3717334](https://pubmed.ncbi.nlm.nih.gov/3717334/).
 24. Kvist H, Chowdhury B, Sjostrom L, Tylén U, Cederblad A. Adipose tissue volume determination in males by computed tomography and 40K. *Int J Obes*. 1988; 12(3):249–66. PMID: [3391740](https://pubmed.ncbi.nlm.nih.gov/3391740/).
 25. Blaak E. Gender differences in fat metabolism. *Current opinion in clinical nutrition and metabolic care*. 2001; 4(6):499–502. PMID: [11706283](https://pubmed.ncbi.nlm.nih.gov/11706283/).
 26. DeWitt DE, Hirsch IB. Outpatient insulin therapy in type 1 and type 2 diabetes mellitus: scientific review. *JAMA: the journal of the American Medical Association*. 2003; 289(17):2254–64. PMID: [12734137](https://pubmed.ncbi.nlm.nih.gov/12734137/).
 27. Stoneking K. Initiating basal insulin therapy in patients with type 2 diabetes mellitus. *American journal of health-system pharmacy: AJHP: official journal of the American Society of Health-System Pharmacists*. 2005; 62(5):510–8. PMID: [15745915](https://pubmed.ncbi.nlm.nih.gov/15745915/).