

Himmelfarb Health Sciences Library, The George Washington University Health Sciences Research Commons

Environmental and Occupational Health Faculty
Publications

Environmental and Occupational Health

3-4-2016

Phylogenetic organization of bacterial activity.

Ember M Morrissey

Rebecca L Mau

Egbert Schwartz

J Gregory Caporaso

Paul Dijkstra

See next page for additional authors

Follow this and additional works at: https://hsrc.himmelfarb.gwu.edu/sphhs_enviro_facpubs

 Part of the [Bacteriology Commons](#), [Environmental Public Health Commons](#), and the [Occupational Health and Industrial Hygiene Commons](#)

APA Citation

Morrissey, E., Mau, R., Schwartz, E., Caporaso, J., Dijkstra, P., van Gestel, N., Koch, B., Liu, C. M., Hayer, M., McHugh, T., Marks, J., Price, L. B., & Hungate, B. (2016). Phylogenetic organization of bacterial activity.. *ISME Journal*, (). <http://dx.doi.org/10.1038/ismej.2016.28>

This Journal Article is brought to you for free and open access by the Environmental and Occupational Health at Health Sciences Research Commons. It has been accepted for inclusion in Environmental and Occupational Health Faculty Publications by an authorized administrator of Health Sciences Research Commons. For more information, please contact hsrc@gwu.edu.

Authors

Ember M Morrissey, Rebecca L Mau, Egbert Schwartz, J Gregory Caporaso, Paul Dijkstra, Natasja van Gestel, Benjamin J Koch, Cindy M. Liu, Michaela Hayer, Theresa A McHugh, Jane C Marks, Lance B. Price, and Bruce A Hungate

SHORT COMMUNICATION

Phylogenetic organization of bacterial activity

Ember M Morrissey^{1,6}, Rebecca L Mau¹, Egbert Schwartz^{1,2}, J Gregory Caporaso^{1,2,3}, Paul Dijkstra^{1,2}, Natasja van Gestel¹, Benjamin J Koch¹, Cindy M Liu^{3,4,5}, Michaela Hayer¹, Theresa A McHugh^{1,7}, Jane C Marks^{1,2}, Lance B Price^{4,5} and Bruce A Hungate^{1,2}

¹Center for Ecosystem Science and Society, Northern Arizona University, Flagstaff, AZ, USA; ²Department of Biological Sciences, Northern Arizona University, Flagstaff, AZ, USA; ³Center for Microbial Genetics and Genomics, Northern Arizona University, Flagstaff, AZ, USA; ⁴Center for Microbiomics and Human Health, Translational Genomics Research Institute, Flagstaff, AZ, USA and ⁵Department of Environmental and Occupational Health, Milken Institute School of Public Health, George Washington University, Washington, DC, USA

Phylogeny is an ecologically meaningful way to classify plants and animals, as closely related taxa frequently have similar ecological characteristics, functional traits and effects on ecosystem processes. For bacteria, however, phylogeny has been argued to be an unreliable indicator of an organism's ecology owing to evolutionary processes more common to microbes such as gene loss and lateral gene transfer, as well as convergent evolution. Here we use advanced stable isotope probing with ¹³C and ¹⁸O to show that evolutionary history has ecological significance for *in situ* bacterial activity. Phylogenetic organization in the activity of bacteria sets the stage for characterizing the functional attributes of bacterial taxonomic groups. Connecting identity with function in this way will allow scientists to begin building a mechanistic understanding of how bacterial community composition regulates critical ecosystem functions.

The ISME Journal advance online publication, 4 March 2016; doi:10.1038/ismej.2016.28

Microbiologists have hotly debated the relationship between phylogeny and function in microorganisms for decades. Significant genomic variation even within closely related organisms (that is, >97% 16S rRNA gene identity) suggests that even shallow clades may not be ecologically coherent (Doolittle and Zhaxybayeva, 2009). Further, bacterial strains with identical 16S rRNA gene sequences can exhibit distinct growth rates and substrate utilization profiles, suggesting limited niche overlap (Jaspers and Overmann, 2004). However, many functional genes are relatively conserved in prokaryotic phylogeny (Martiny *et al.*, 2013). This conservation of gene content could underlie the accumulating evidence that phylogenetically clustered taxa are similar in their environmental distribution, niche space and functional capabilities, even at high levels of taxonomic organization (for example, order, class, phylum; Philippot *et al.*, 2010; Lennon *et al.*, 2012).

To date, evidence for phylogenetic organization of bacterial traits in intact assemblages has primarily relied on categorizing bacterial responses, such as changes in a taxon's relative abundance (Placella *et al.*, 2012; Evans and Wallenstein, 2014) or the presence in different environments (Morrissey and Franklin, 2015). Such research has provided early evidence that phylogeny can influence bacterial substrate utilization (Goldfarb *et al.*, 2011; Mayali *et al.*, 2014), habitat preference (Morrissey and Franklin, 2015) and life history strategies (Evans and Wallenstein, 2014). Although valuable, these assessments of bacterial traits are incomplete because they fail to capture quantitative variation among taxa. For instance, two taxa may be categorized as 'cellulose utilizing', but one may decompose and assimilate cellulose 10 times faster than the other, exerting more influence on cellulose decomposition rates. Rarely have quantitative measures of *in situ* activity been directly related to bacterial phylogeny (Amend *et al.*, 2016); as a consequence, the significance of phylogeny in determining quantitative variation in microbial function is not well understood. This is likely because of the limited availability of techniques that can quantitatively measure taxon-specific activity. The current work uses a new technique, quantitative stable isotope probing (Hungate *et al.*, 2015), to measure bacterial activity in soil. This technique works by determining

Correspondence: EM Morrissey, Division of Plant and Soil Sciences, West Virginia University, Agricultural Sciences Building, PO Box 6108, Morgantown, WV 26505, USA.
E-mail: ember.morrissey@mail.wvu.edu

⁶Current address: Division of Plant and Soil Sciences, West Virginia University, Morgantown, WV 26505, USA.

⁷Current address: US Geological Survey, Southwest Biological Science Center, Moab, UT 84532, USA.

Received 2 November 2015; revised 14 January 2016; accepted 18 January 2016

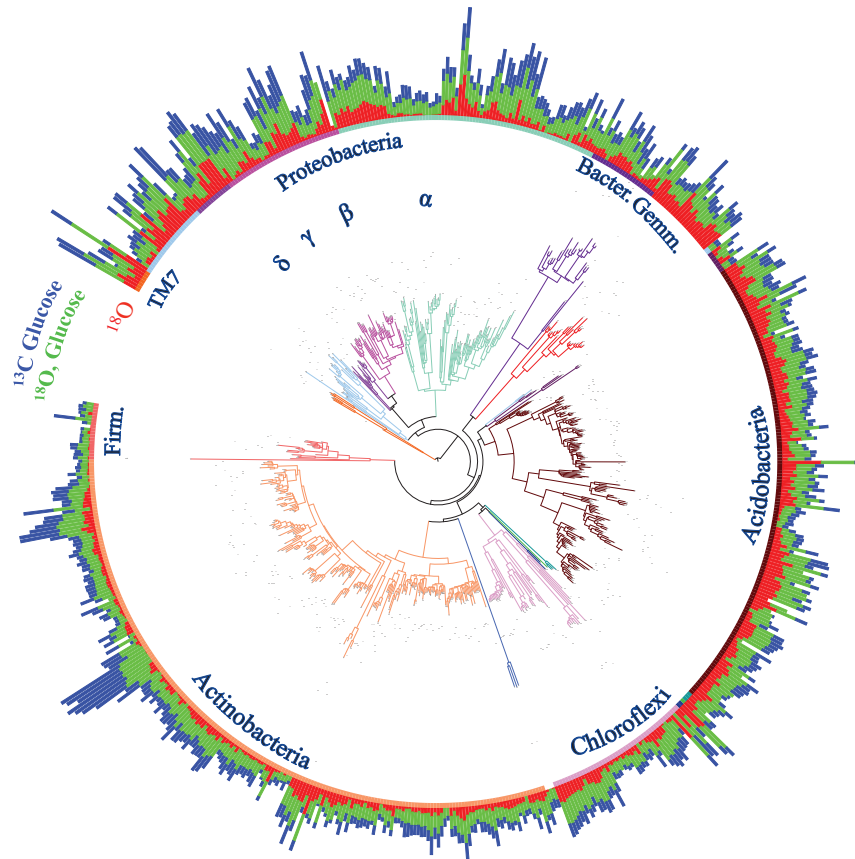


Figure 1 Phylogenetic tree (based on 16S rRNA gene sequences) and isotope incorporation of bacterial taxa in soil. Bars are proportional to the excess atom fraction of ^{18}O or ^{13}C of each taxon's DNA after incubation with ^{13}C -glucose (blue) or H_2^{18}O in the presence (green) or absence (red) of natural abundance glucose. Tree is colored by the phylogenetic group.

the shift in the buoyant density of each taxon's DNA caused by incorporation of a stable isotope tracer during incubation. Because the amount of isotope incorporation is directly proportional to the change in a given taxon's buoyant density, this method enables quantitative measurement of isotope incorporation and thus bacterial activity.

This study aimed to test whether the activity of bacterial taxa in soil exhibits phylogenetic organization. We measured growth and glucose assimilation by exposing soil from a ponderosa pine forest in northern Arizona to ^{18}O -labeled or unlabeled water for 7 days, with or without ^{13}C or unlabeled glucose ($n = 3$ per treatment, see Supplementary Materials for additional methodological details). Using quantitative stable isotope probing, the excess atom fraction ^{18}O in the absence and presence of unlabeled glucose as well as the excess atom fraction ^{13}C from glucose of each taxon's DNA was quantified (Hungate *et al.*, 2015). In brief, this technique uses density ultracentrifugation and high-throughput sequencing to measure changes in the density of microbial DNA following exposure to a heavy isotope. By modeling the effects of genomic GC content and isotope incorporation on the DNA molecular weight and density, this technique can quantitatively estimate

isotope incorporation into DNA irrespective of nucleic acid composition. Because water is a universal substrate for DNA synthesis (Schwartz, 2007), a taxon's genomic ^{18}O content reflects its population growth during the incubation period. Similarly, genomic ^{13}C content provides a quantitative measure of each taxon's carbon assimilation from glucose. To determine whether these activities exhibited phylogenetic organization, we tested for a phylogenetic signal, which is the tendency of related organisms to resemble each other more than would be expected by chance (Pagel, 1999; Blomberg *et al.*, 2003).

All three measures of bacterial activity, growth with and without added glucose as well as carbon assimilation from glucose, were clustered across the 16S rRNA gene-based phylogenetic tree (Figure 1, Table 1). These results provide robust evidence that bacterial evolutionary history has a measurable influence on the activity of bacteria in intact soil communities. Our estimates of λ approached 1, signifying that the variation in bacterial activity was approximately proportional to what would be expected under a neutral drift model of evolution (Freckleton *et al.*, 2002). However, the more conservative Blomberg's K statistics were < 1 , suggesting

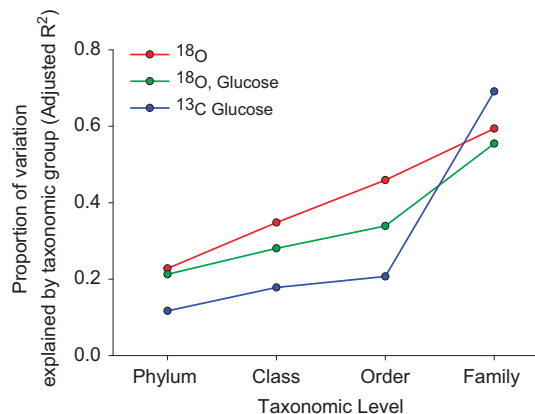
Table 1 Phylogenetic signals associated with bacterial growth in the absence (^{18}O) and presence (^{18}O , Glucose) of added glucose as well as bacterial carbon assimilation from glucose (^{13}C Glucose)

	Blomberg's		Pagel's	
	K	P	λ	P
^{18}O	0.38	0.001	0.97	<0.001
^{18}O , Glucose	0.50	0.001	0.96	<0.001
^{13}C Glucose	0.54	0.001	0.98	<0.001

that relatives were less similar than would be expected under neutral drift (Blomberg *et al.*, 2003). Overall, we detected phylogenetic signals that were similar in strength to those reported for a variety of ecological traits in plants and animals, such as habitat breadth and fecundity (Freckleton *et al.*, 2002; Blomberg *et al.*, 2003).

Examining within- versus among-group variation across bacterial taxonomy also shows evidence of this phylogenetic organization. Taxonomic group, from family to phylum, explained a significant amount of the variation in ^{18}O or ^{13}C excess atom fraction across all taxonomic levels (Figure 2, $P < 0.001$ in all cases). The finding that microbial activities are clustered at the phylum level suggests that variation in bacterial activities arise from physiological and ecological differences deeply rooted in bacterial phylogeny. As would be expected, group identity at finer levels of taxonomic resolution is able to explain increasing amounts of variation in bacterial activity. Family membership explained the majority of variation in growth (that is, ^{18}O incorporation) and carbon incorporation, reflecting the significant differences in the activities of bacterial families (Supplementary Figure S1). For example, all members of the Micrococcaceae family exhibited high ^{13}C assimilation from glucose (ranging from 0.41 to 0.52 ^{13}C excess atom fraction), while assimilation by members of the Solibacteraceae was much lower (ranging from 0.04 to 0.06 ^{13}C excess atom fraction). These findings are consistent with patterns documented in plants, where phylogenetic groups exhibit distinct functional traits, such as leaf size and seed mass (Cornwell *et al.*, 2008).

The ability to use simple carbon substrates is common in bacteria and has been suggested to display only shallow phylogenetic clustering (Martiny *et al.*, 2013), an indication that microbial taxa are functionally redundant with regard to the processing of these compounds (McGuire and Treseder, 2010; Martiny *et al.*, 2013). If the hypothesis of functional redundancy were true, one would expect little-to-no difference in carbon metabolism or assimilation across the bacterial phylogeny, which would produce a weak phylogenetic signal. Our results challenge this notion of functional redundancy: although nearly all organisms incorporated ^{13}C , the degree of enrichment differed dramatically

**Figure 2** Variation in excess atom fraction of ^{18}O or ^{13}C of each taxon's DNA after incubation with ^{13}C -glucose (blue) or H_2^{18}O in the presence (green) or absence (red) of natural abundance glucose explained by group membership at different taxonomic levels. Values reflect linear model results for groups with a minimum of five member taxa.

across taxa and families. Thus, even though the ability to assimilate simple carbon substrates in pure culture may be relatively ubiquitous and display only shallow clustering, the rates of carbon assimilation *in situ* may vary significantly across bacterial phylogeny. In an intact community, carbon assimilation rates likely depend on a variety of ecological traits and physiological systems, such as those governing the transport of substrates into the cell and the organism's growth rate. Our findings highlight potential pitfalls with using qualitative measures, such as genetic potential or substrate utilization tests (Martiny *et al.*, 2013), to infer functional redundancy, which is defined as a quantitative equivalency in the functioning of taxa (Allison and Martiny, 2008).

The variable growth (that is, ^{18}O assimilation) observed here could reflect differing trophic strategies across bacterial taxa. Growth rate, especially in a nutrient-rich environment, is a defining characteristic of trophic strategy, where relatively rapid growth suggests copiotrophy and slow growth indicates oligotrophy (Lauro *et al.*, 2009). Trophic strategy has been linked to many genomic features in bacteria, such as genome size, rRNA operon number and abundance of genes encoding for periplasmic membrane proteins (Lauro *et al.*, 2009). It is likely that a combination of such genomic features underlie the variation in growth observed here. Growth is a process that involves, and is regulated by, many gene systems in bacteria, resulting in phenotypes that reflect an integration of many individual processes. This complexity could be one reason why the phylogenetic signal was so robust, as many gains, losses and changes to individual genes would be required to transition a slow-growing bacterium into a fast-growing bacterium.

Evaluating phylogenetic organization, as carried out in the current work, will allow more accurate

characterization of phylogenetic groups. For instance, prior studies have described Actinobacteria as both oligotrophic (Bastian *et al.*, 2009) and copiotrophic (Leff *et al.*, 2015). Such conflicting results highlight the imprudence of describing high-level taxonomic groups without assessing whether the responses of member taxa are coherent. Our results indicate that Actinobacteria contains both copiotrophic and oligotrophic families (for example, Micrococcaceae and Rubrobacteraceae, respectively). Thus Actinobacteria could be dominated by copiotrophic taxa in one environment and oligotrophic taxa in another. As a consequence, generalizations about trophic strategy at the phylum level may not be possible or appropriate. Although our results are in agreement with some proposed classifications in the literature, such as β - and γ -Proteobacteria as being relatively copiotrophic (Eilers *et al.*, 2010), we suggest researchers evaluate and describe the phylogenetic organization associated with an ecological trait or activity before making generalizations to an entire phylogenetic group.

Microbial community composition affects ecosystem functioning from litter decomposition (Allison *et al.*, 2013) to plant fitness (Lau and Lennon, 2012). However, the mechanisms of these effects are unknown because very little information is available on the distribution of *in situ* activities across prokaryotes. This lack of information has prevented microbial ecologists from testing important questions about the functional redundancy of microorganisms in their natural communities. If bacterial taxa perform a process at the same rate under the same environmental conditions, thereby making them functionally redundant, then a change in the diversity of that community is unlikely to affect the community-level process rate (Allison and Martiny, 2008). However, we found individual taxa and phylogenetic groups to be functionally dissimilar with respect to growth and carbon assimilation, providing a basis for functional differences among phylogenetically distinct communities. Consequently, this research sets the stage for characterizing the functions of microbial taxa and phylogenetic groups in order to build a mechanistic understanding of how phylogenetic community composition influences ecosystem processes.

Conflict of Interest

The authors declare no conflict of interest.

Acknowledgements

This research was supported by grants from the National Science Foundation (EAR-1124078 and DEB-1321792) and the Department of Energy's Biological Systems Science Division, Program in Genomic Science.

References

- Allison SD, Lu Y, Weihe C, Goulden ML, Martiny AC, Treseder KK *et al.* (2013). Microbial abundance and composition influence litter decomposition response to environmental change. *Ecology* **94**: 714–725.
- Allison SD, Martiny JB. (2008). Resistance, resilience, and redundancy in microbial communities. *Proc Natl Acad Sci USA* **105**: 11512–11519.
- Amend AS, Martiny AC, Allison SD, Berlemont R, Goulden ML, Lu Y *et al.* (2016). Microbial response to simulated global change is phylogenetically conserved and linked with functional potential. *ISME J* **10**: 109–118.
- Bastian F, Bouziri L, Nicolardot B, Ranjard L. (2009). Impact of wheat straw decomposition on successional patterns of soil microbial community structure. *Soil Biol Biochem* **41**: 262–275.
- Blomberg SP, Garland Jr T, Ives AR. (2003). Testing for phylogenetic signal in comparative data: behavioral traits are more labile. *Evolution* **57**: 717–745.
- Cornwell WK, Cornelissen JHC, Amatangelo K, Dorrepaal E, Eviner VT, Godoy O *et al.* (2008). Plant species traits are the predominant control on litter decomposition rates within biomes worldwide. *Ecol Lett* **11**: 1065–1071.
- Doolittle WF, Zhaxybayeva O. (2009). On the origin of prokaryotic species. *Genome Res* **19**: 744–756.
- Eilers KG, Lauber CL, Knight R, Fierer N. (2010). Shifts in bacterial community structure associated with inputs of low molecular weight carbon compounds to soil. *Soil Biol Biochem* **42**: 896–903.
- Evans SE, Wallenstein MD. (2014). Climate change alters ecological strategies of soil bacteria. *Ecol Lett* **17**: 155–164.
- Freckleton RP, Harvey PH, Pagel M. (2002). Phylogenetic analysis and comparative data: a test and review of evidence. *Am Nat* **160**: 712–726.
- Goldfarb KC, Karaoz U, Hanson CA, Santee CA, Bradford MA, Treseder KK *et al.* (2011). Differential growth responses of soil bacterial taxa to carbon substrates of varying chemical recalcitrance. *Front Microbiol* **2**: 94.
- Hungate BA, Mau RL, Schwartz E, Caporaso JG, Dijkstra P, van Gestel N *et al.* (2015). Quantitative microbial ecology through stable isotope probing. *Appl Environ Microbiol* **81**: 7570–7581.
- Jaspers E, Overmann J. (2004). Ecological significance of microdiversity: identical 16S rRNA gene sequences can be found in bacteria with highly divergent genomes and ecophysologies. *Appl Environ Microbiol* **70**: 4831–4839.
- Lau JA, Lennon JT. (2012). Rapid responses of soil microorganisms improve plant fitness in novel environments. *Proc Natl Acad Sci USA* **109**: 14058–14062.
- Lauro FM, McDougald D, Thomas T, Williams TJ, Egan S, Rice S *et al.* (2009). The genomic basis of trophic strategy in marine bacteria. *Proc Natl Acad Sci USA* **106**: 15527–15533.
- Leff JW, Jones SE, Prober SM, Barberán A, Borer ET, Firn JL *et al.* (2015). Consistent responses of soil microbial communities to elevated nutrient inputs in grasslands across the globe. *Proc Natl Acad Sci USA* **112**: 10967–10972.
- Lennon JT, Aanderud ZT, Lehmkuhl BK, Schoolmaster DR Jr. (2012). Mapping the niche space of soil microorganisms using taxonomy and traits. *Ecology* **93**: 1867–1879.

- Martiny AC, Treseder K, Pusch G. (2013). Phylogenetic conservatism of functional traits in microorganisms. *ISME J* **7**: 830–838.
- Mayali X, Weber PK, Mabery S, Pett-Ridge J. (2014). Phylogenetic patterns in the microbial response to resource availability: amino acid incorporation in San Francisco bay. *PLoS One* **9**: e95842.
- McGuire KL, Treseder KK. (2010). Microbial communities and their relevance for ecosystem models: decomposition as a case study. *Soil Biol Biochem* **42**: 529–535.
- Morrissey EM, Franklin RB. (2015). Evolutionary history influences the salinity preference of bacterial taxa in wetland soils. *Front Microbiol* **6**: 1013.
- Pagel M. (1999). Inferring the historical patterns of biological evolution. *Nature* **401**: 877–884.
- Philippot L, Andersson SG, Battin TJ, Prosser JI, Schimel JP et al. (2010). The ecological coherence of high bacterial taxonomic ranks. *Nat Rev Microbiol* **8**: 523–529.
- Placella SA, Brodie EL, Firestone MK. (2012). Rainfall-induced carbon dioxide pulses result

from sequential resuscitation of phylogenetically clustered microbial groups. *Proc Nat Acad Sci* **109**: 10931–10936.

Schwartz E. (2007). Characterization of growing microorganisms in soil by stable isotope probing with $H_2^{18}O$. *Appl Environ Microbiol* **73**: 2541–2546.



This work is licensed under a Creative Commons Attribution-NonCommercial-NoDerivs 4.0 International License. The images or other third party material in this article are included in the article's Creative Commons license, unless indicated otherwise in the credit line; if the material is not included under the Creative Commons license, users will need to obtain permission from the license holder to reproduce the material. To view a copy of this license, visit <http://creativecommons.org/licenses/by-nc-nd/4.0/>

Supplementary Information accompanies this paper on The ISME Journal website (<http://www.nature.com/ismej>)