

# CLEAR BOOK

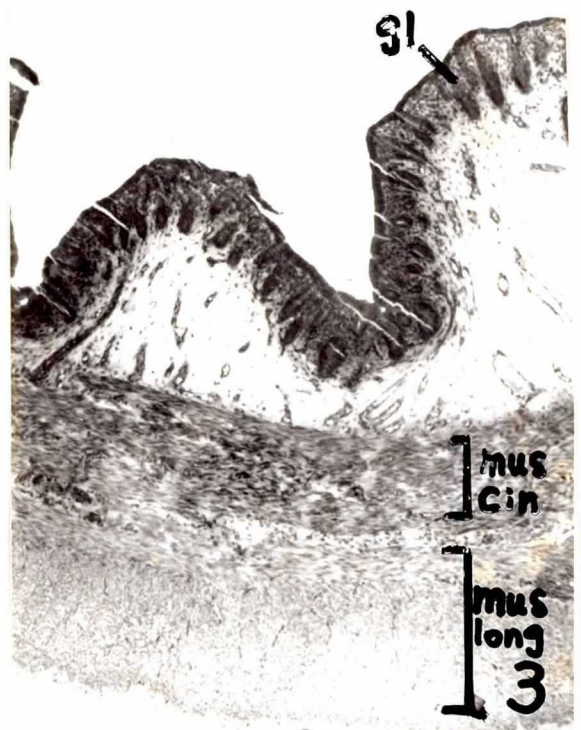
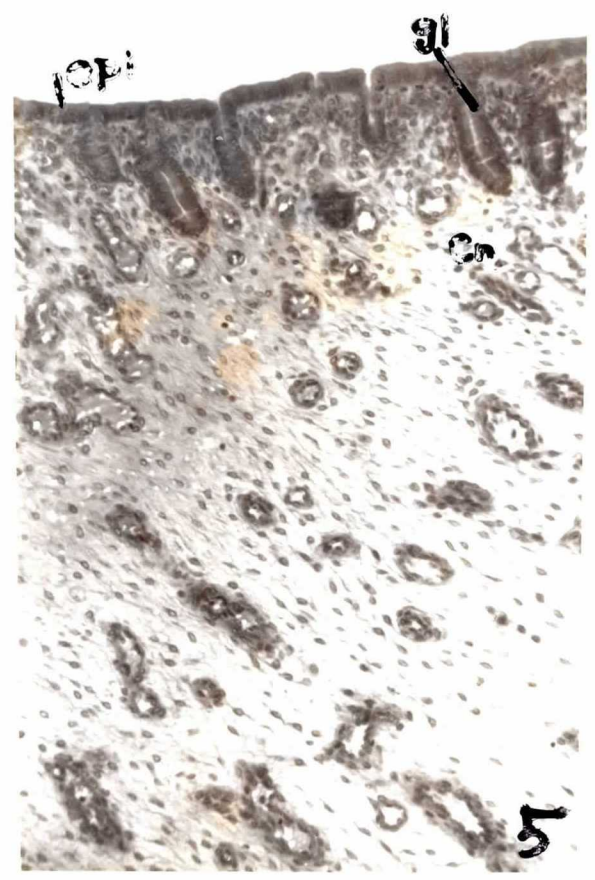
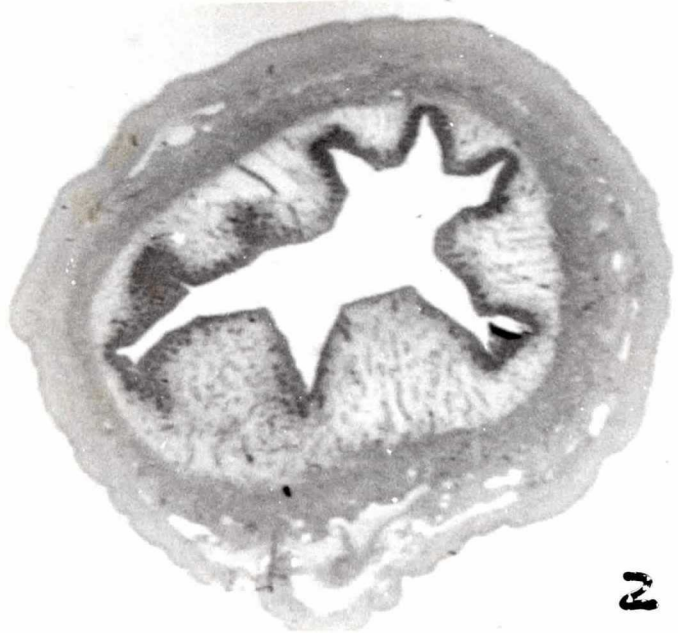
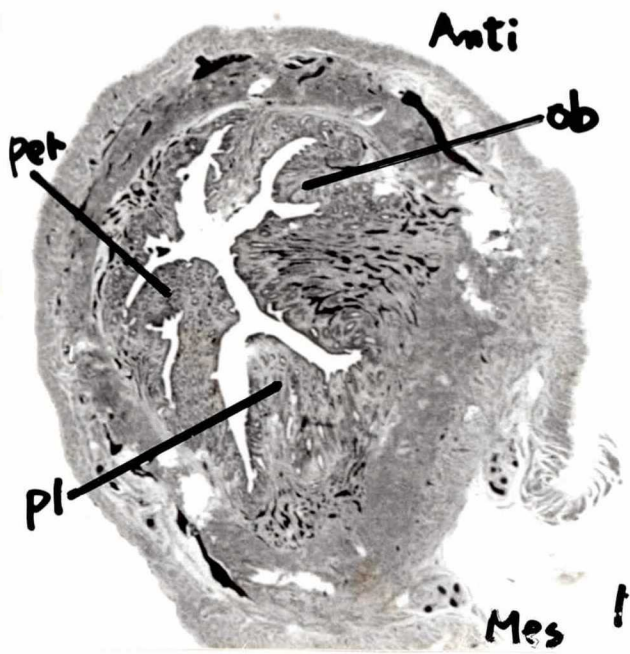
ウサギの着床機構に関する基礎的研究

—特に周着床期の子宮  
内膜の組織および血  
管系の変化—

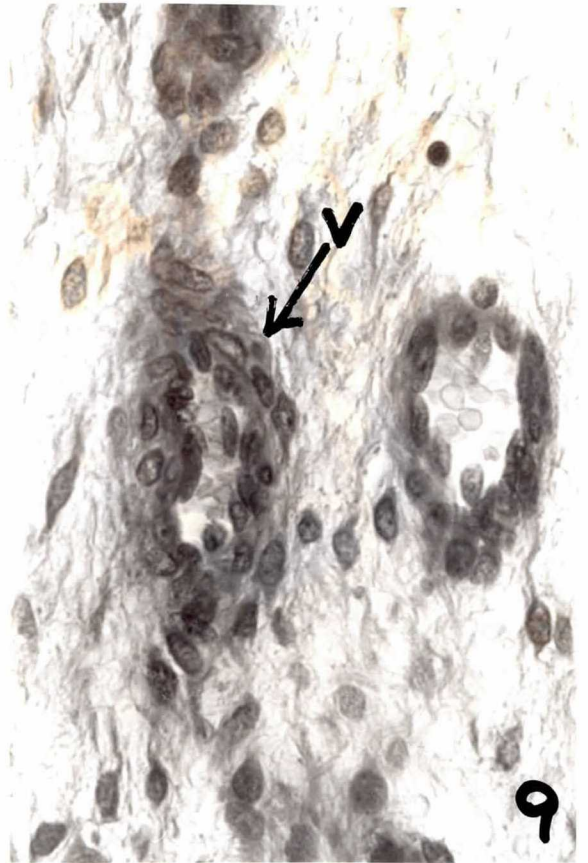
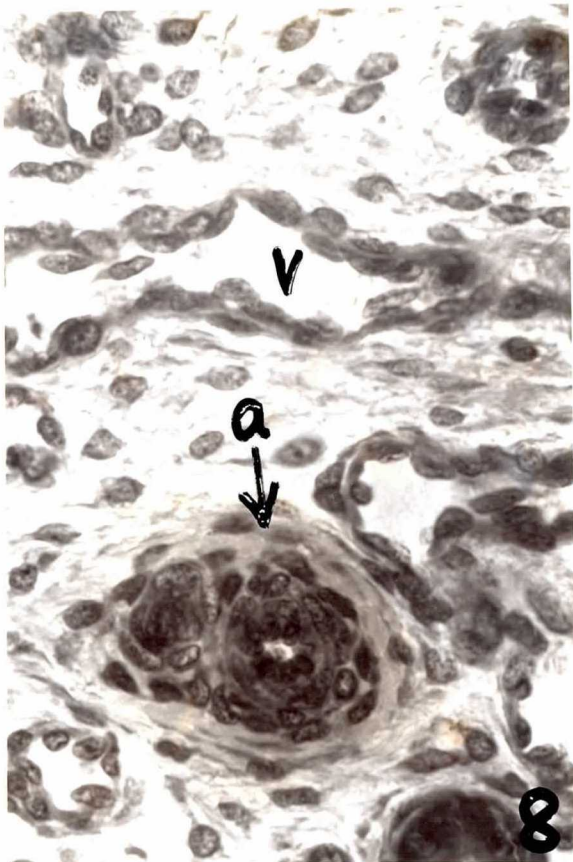
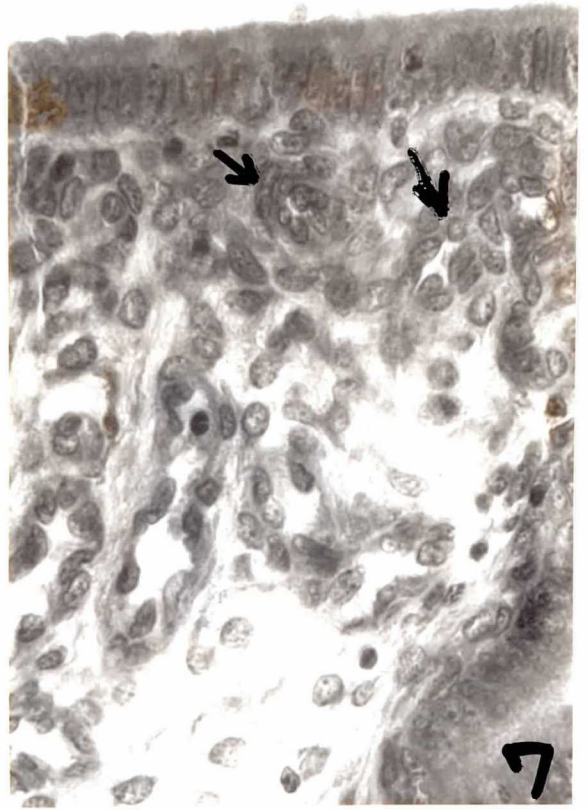
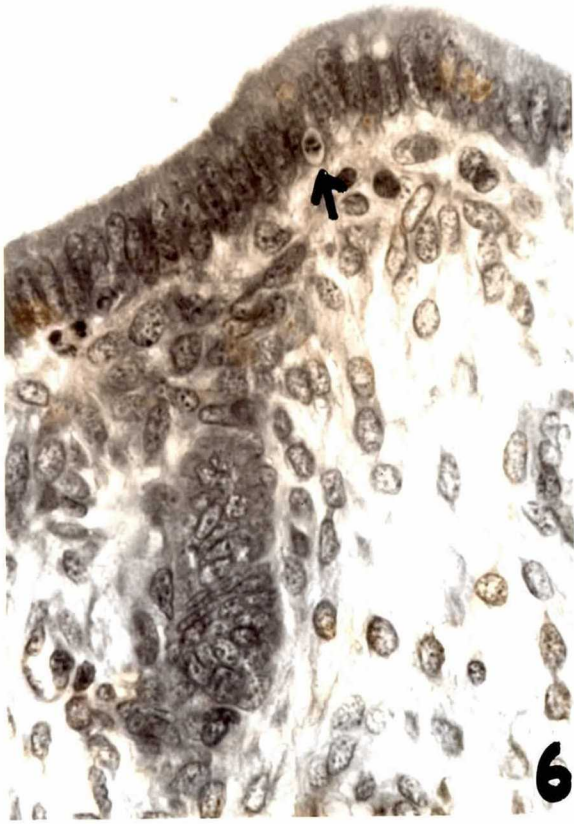
附図および写真

第1巻 (Fig. 1 ~ Fig. 84)



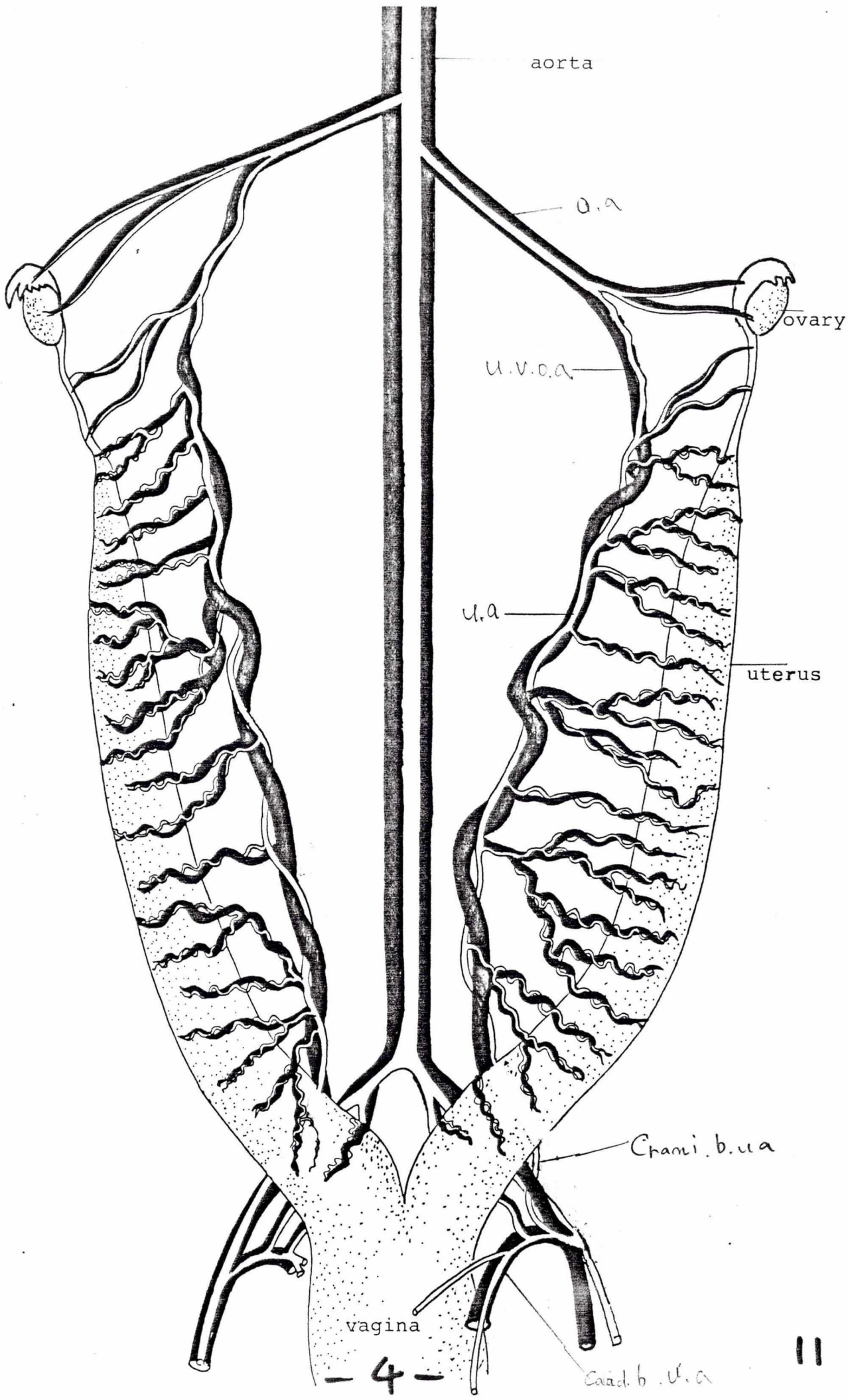




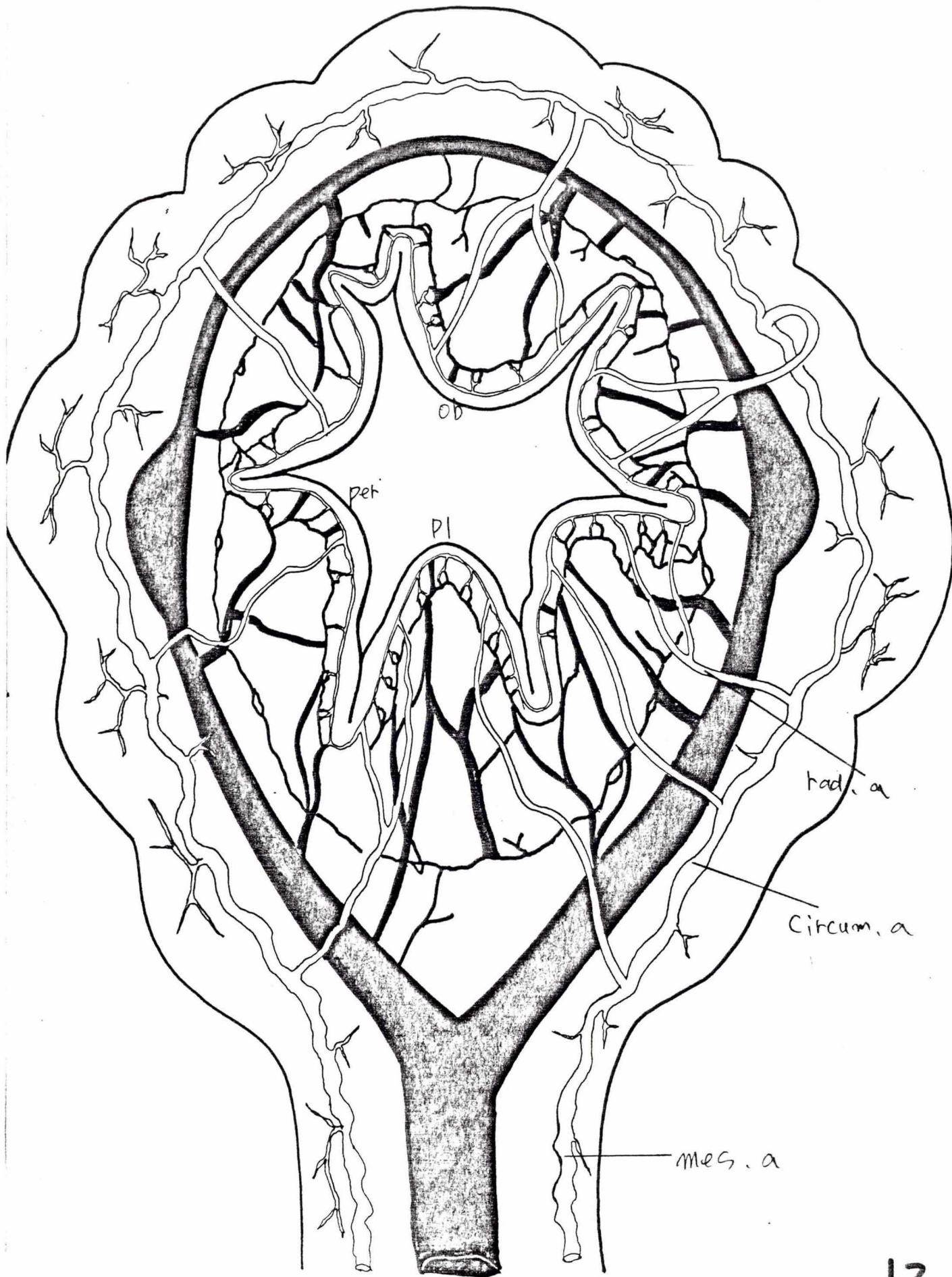
















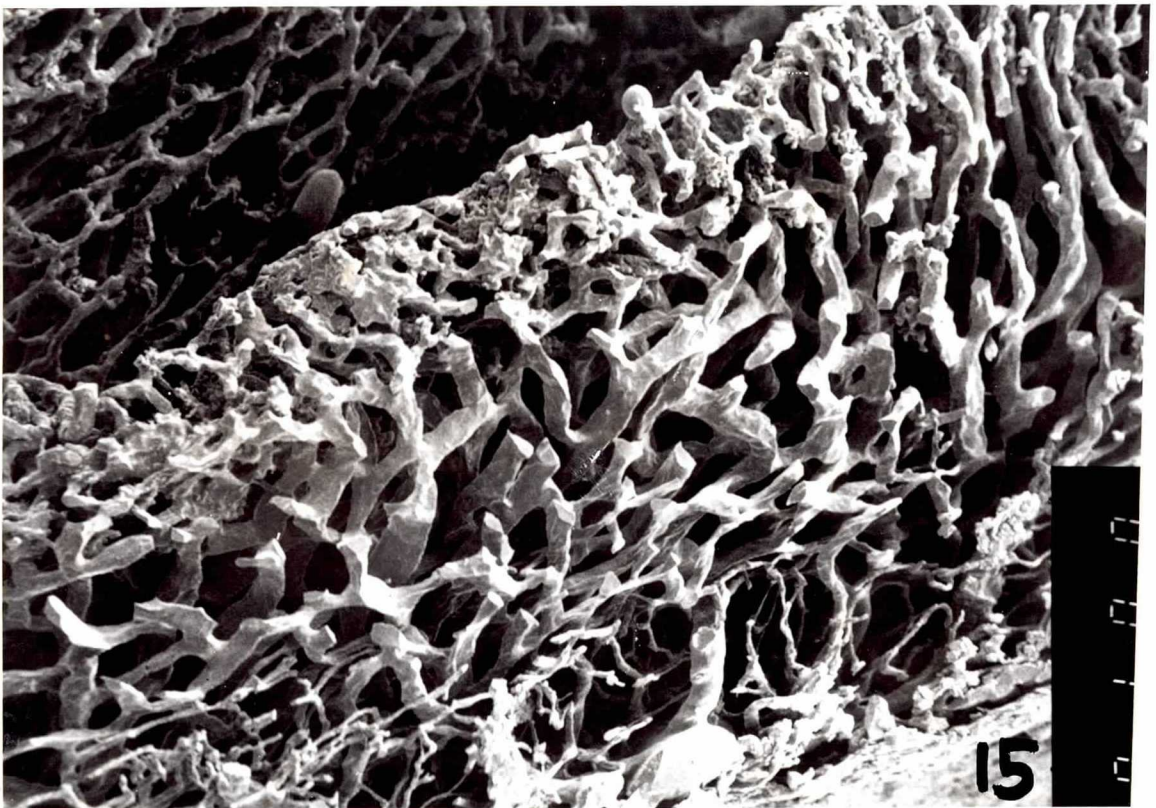
13



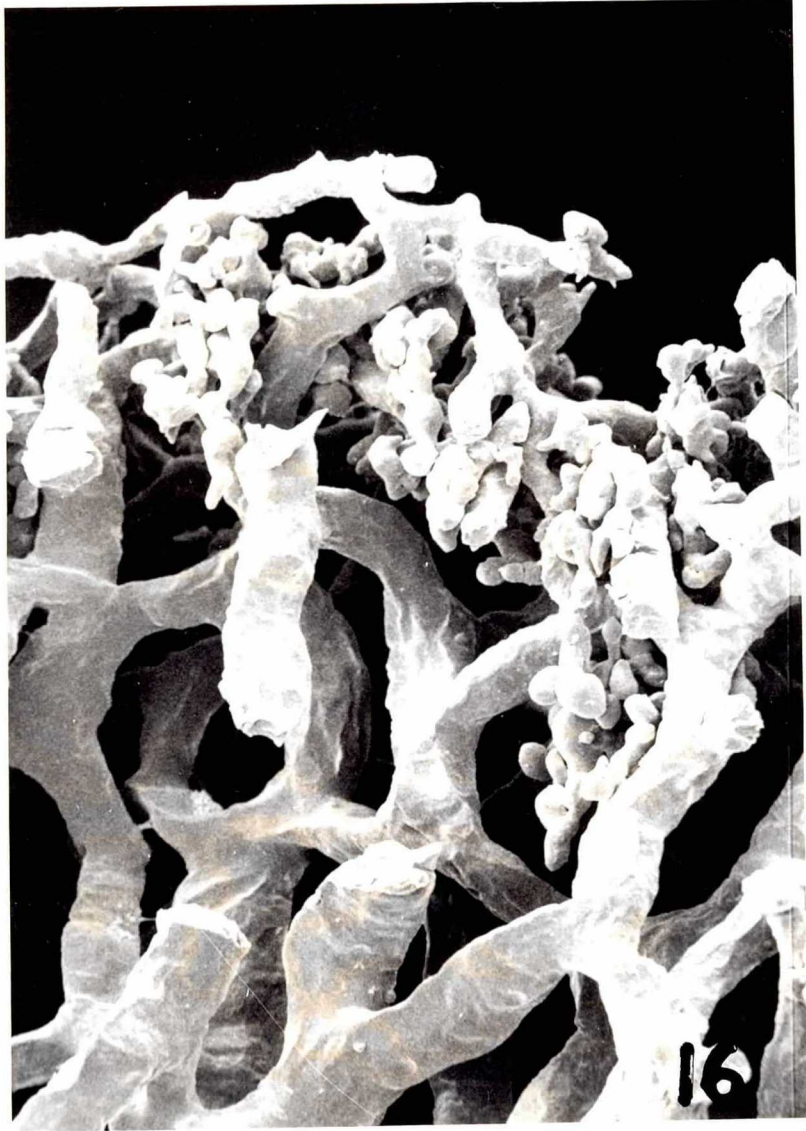
Sub

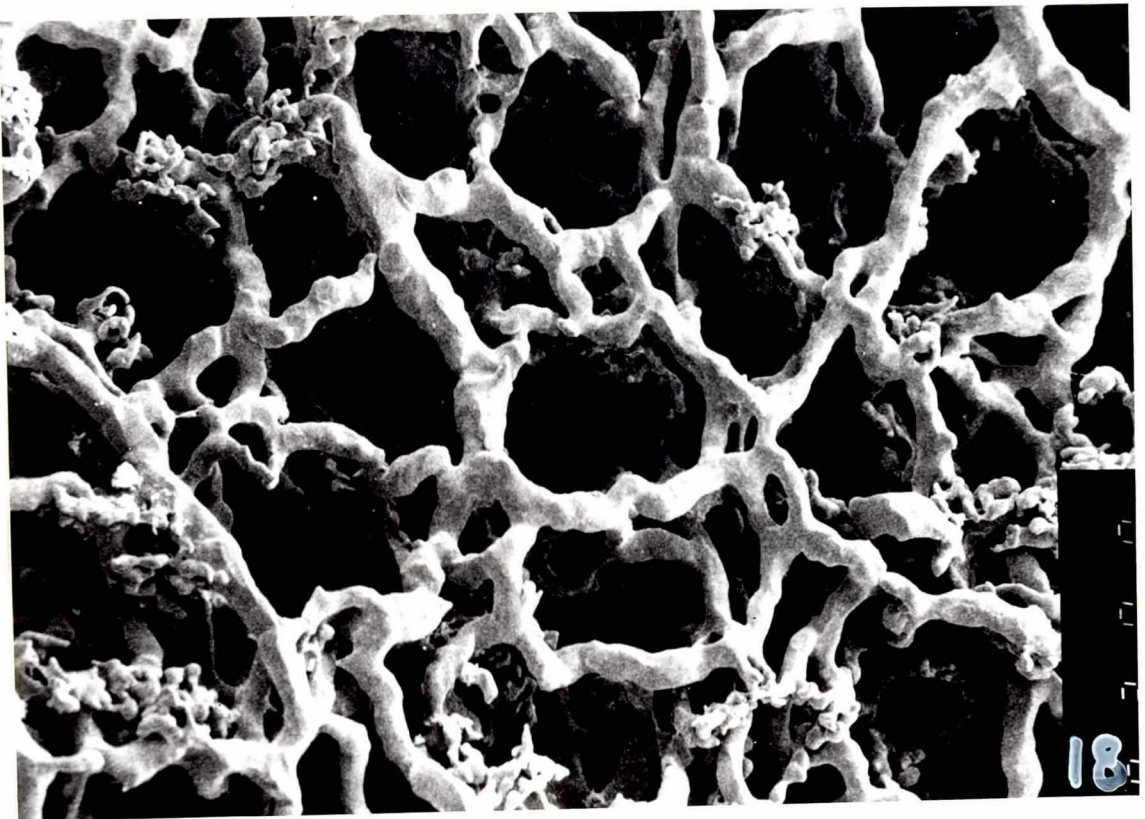
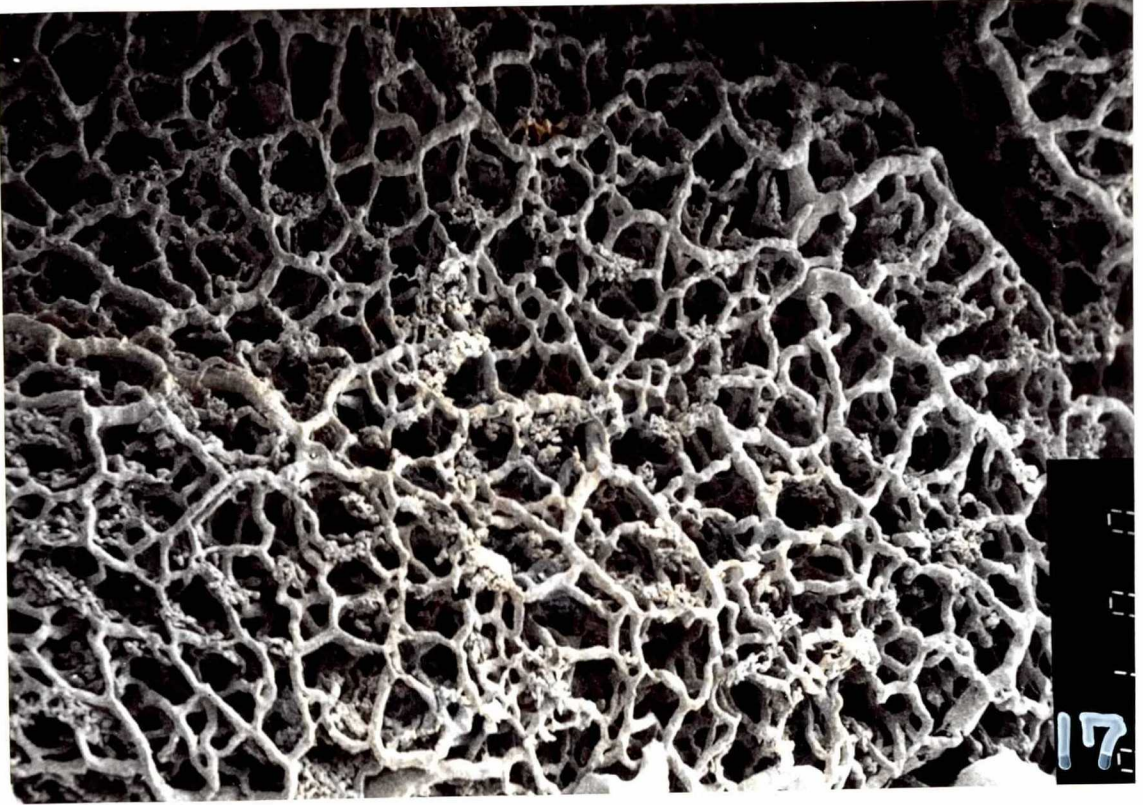
end

myo

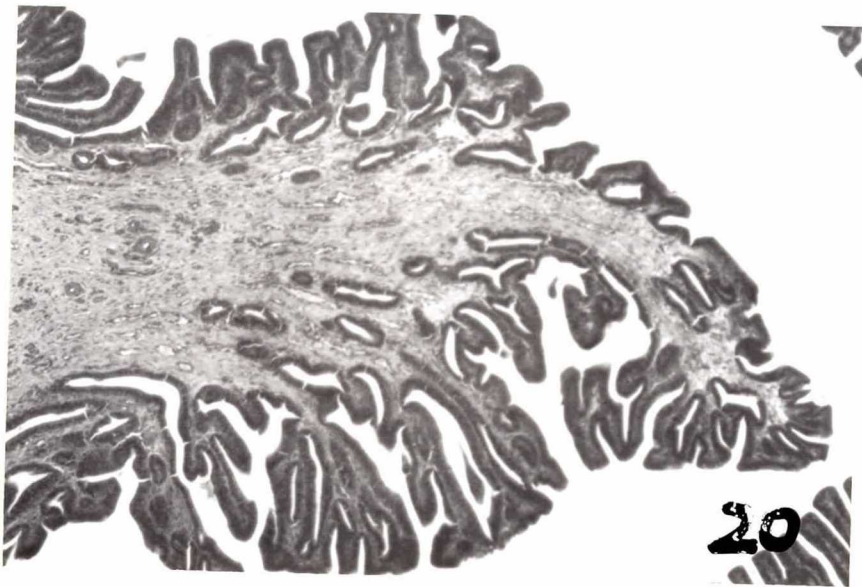
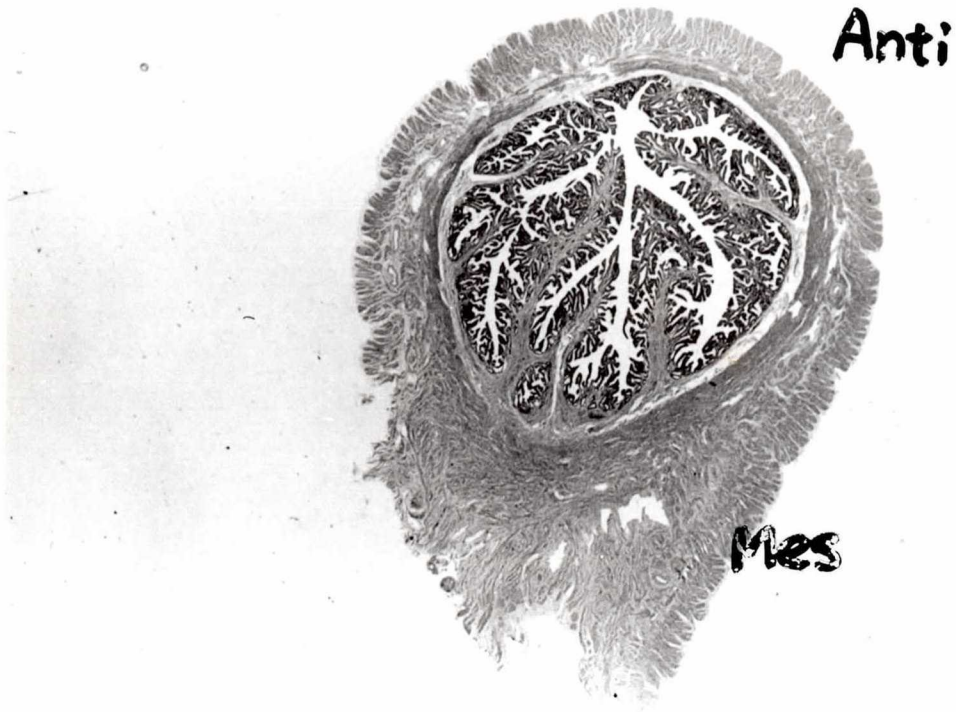


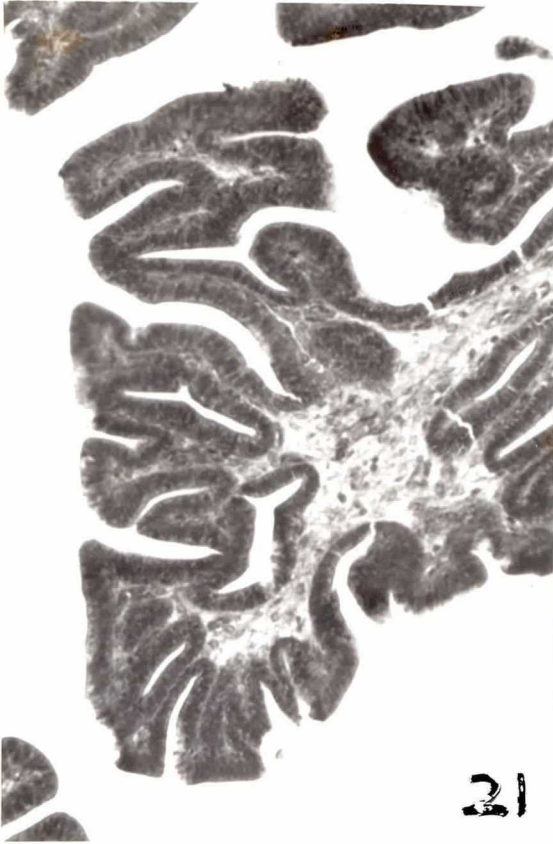




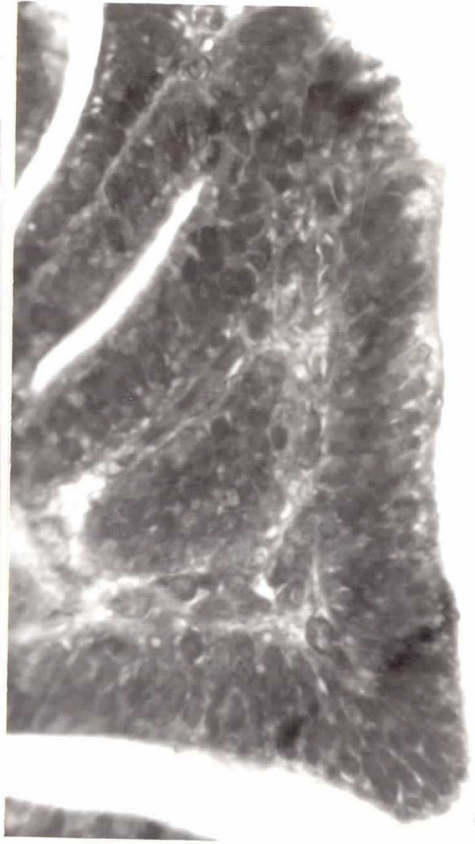




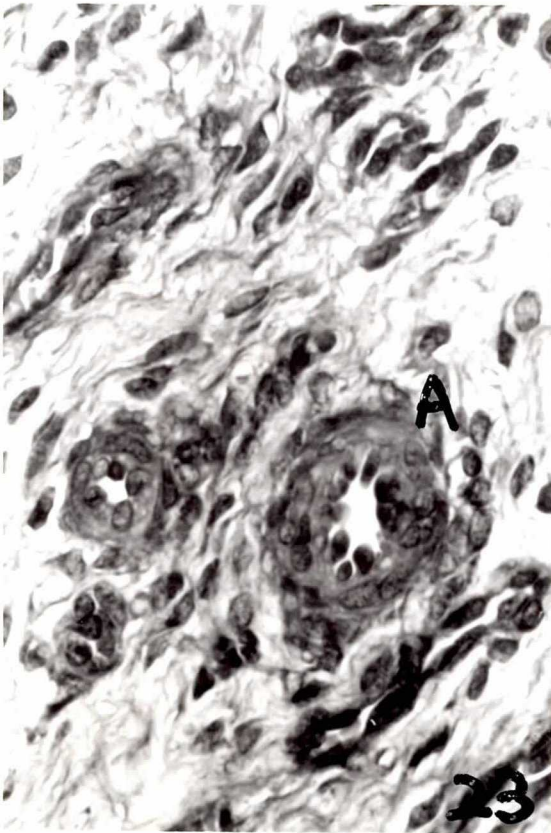




21



22

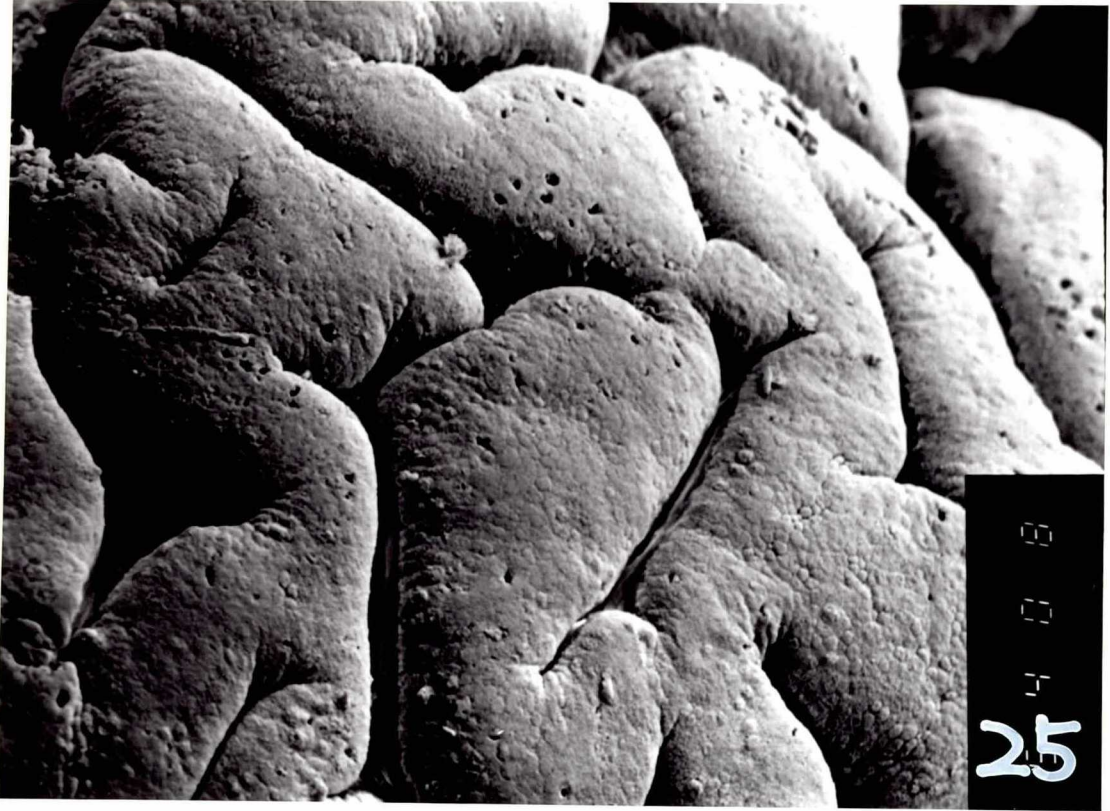


23



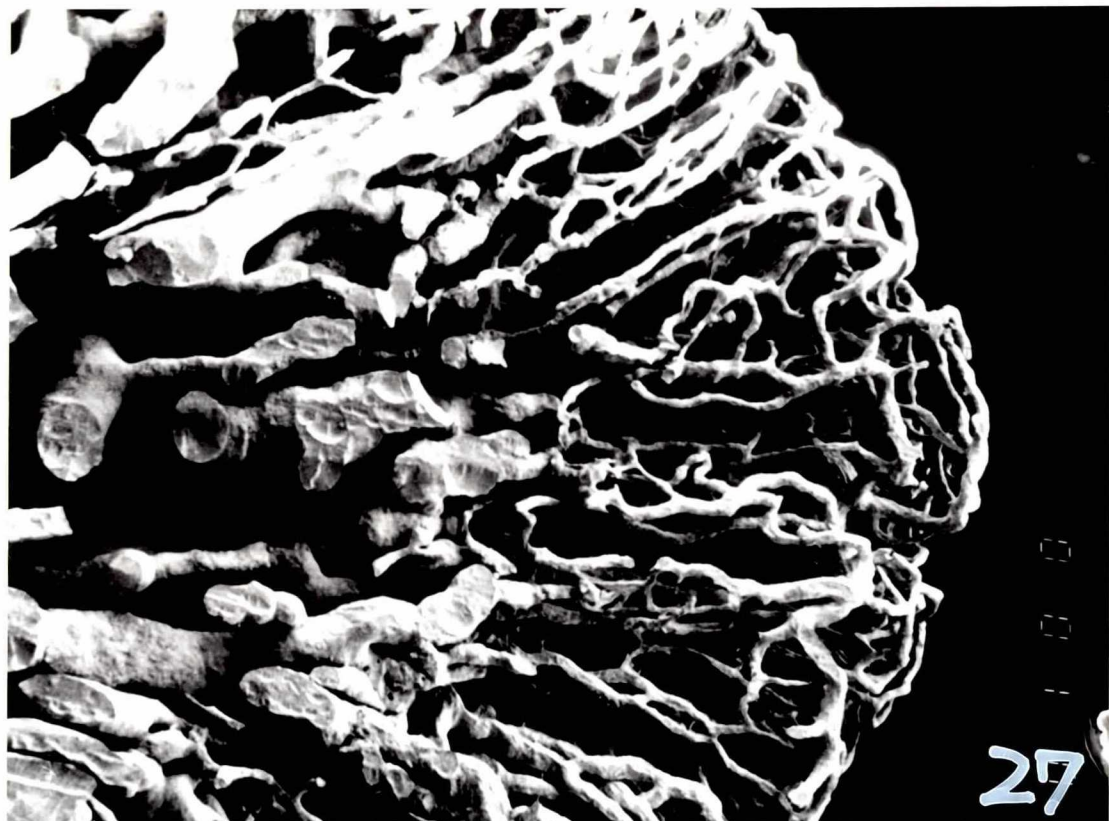
24





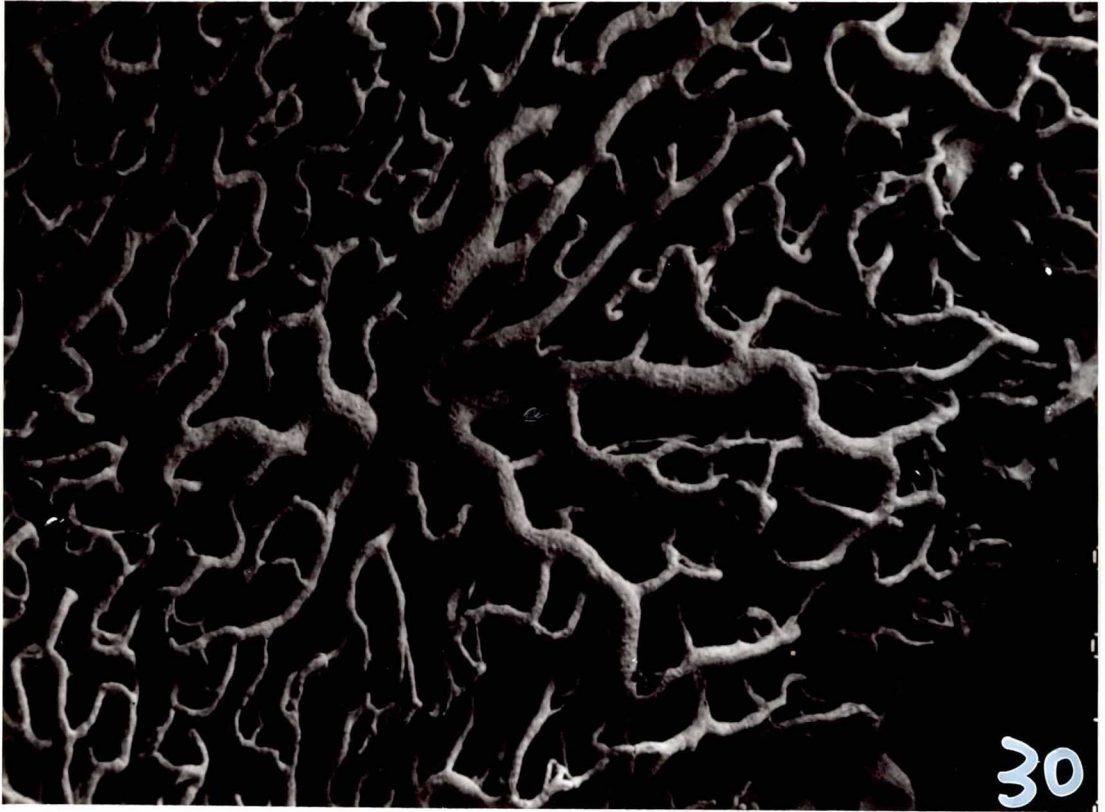


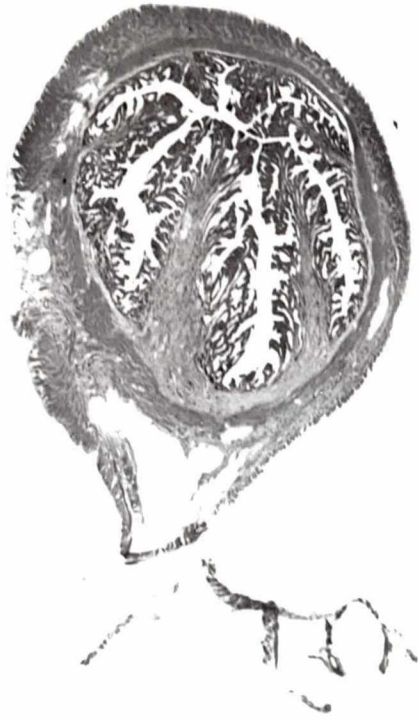




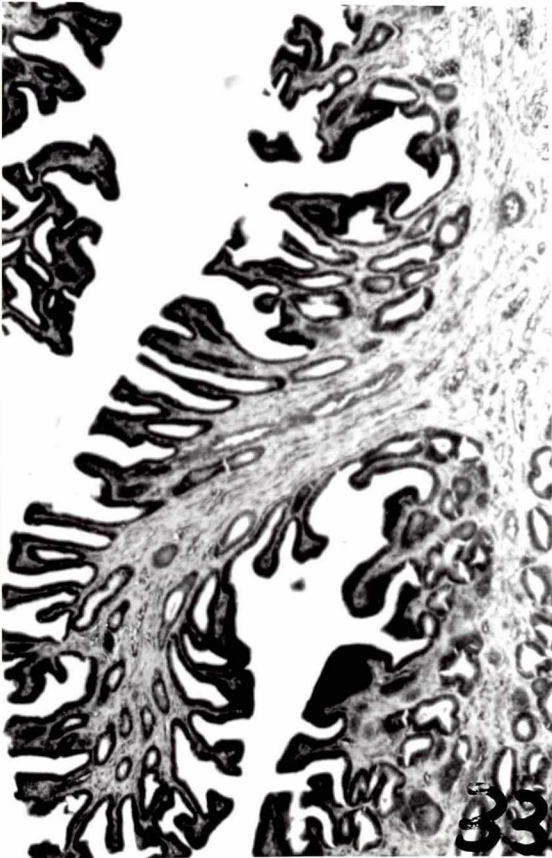




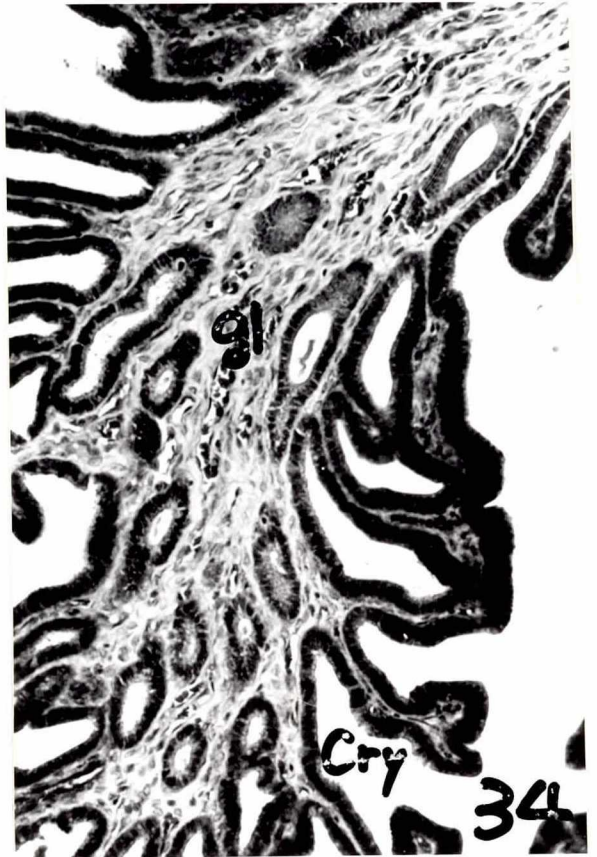




32



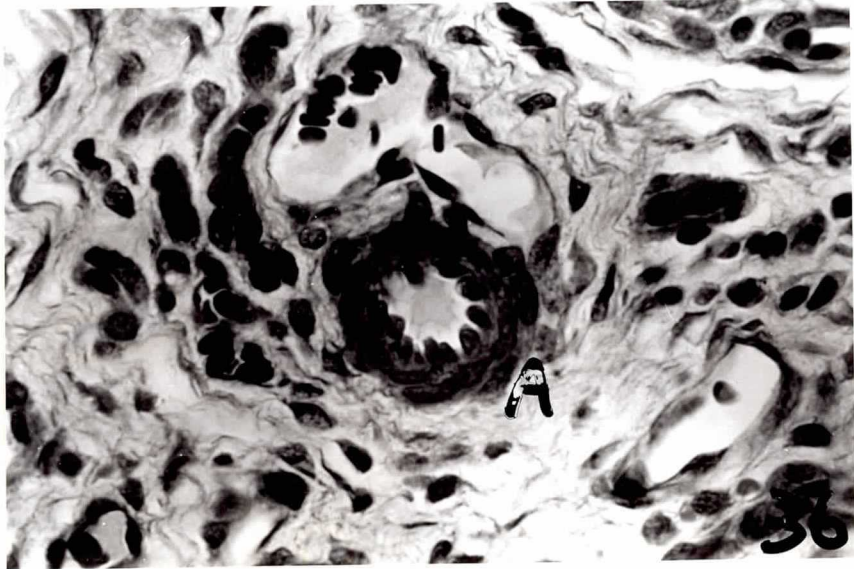
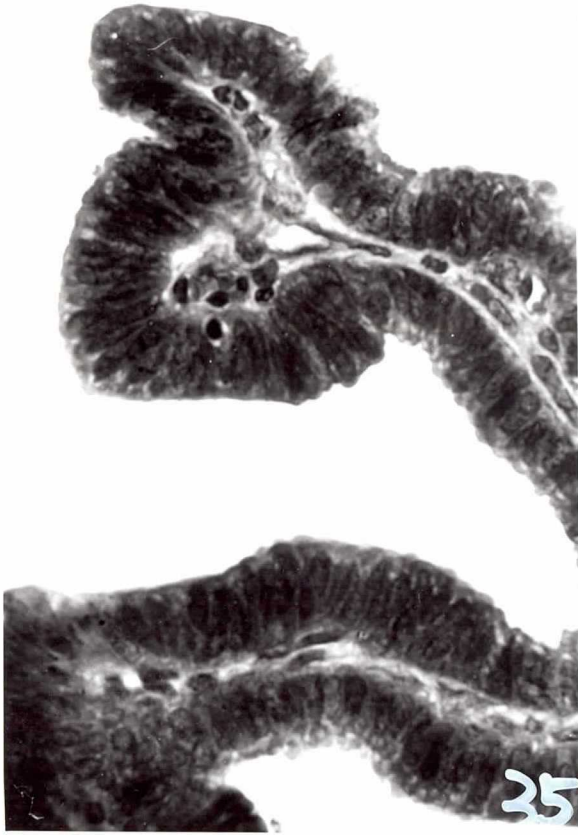
33



Cry

34







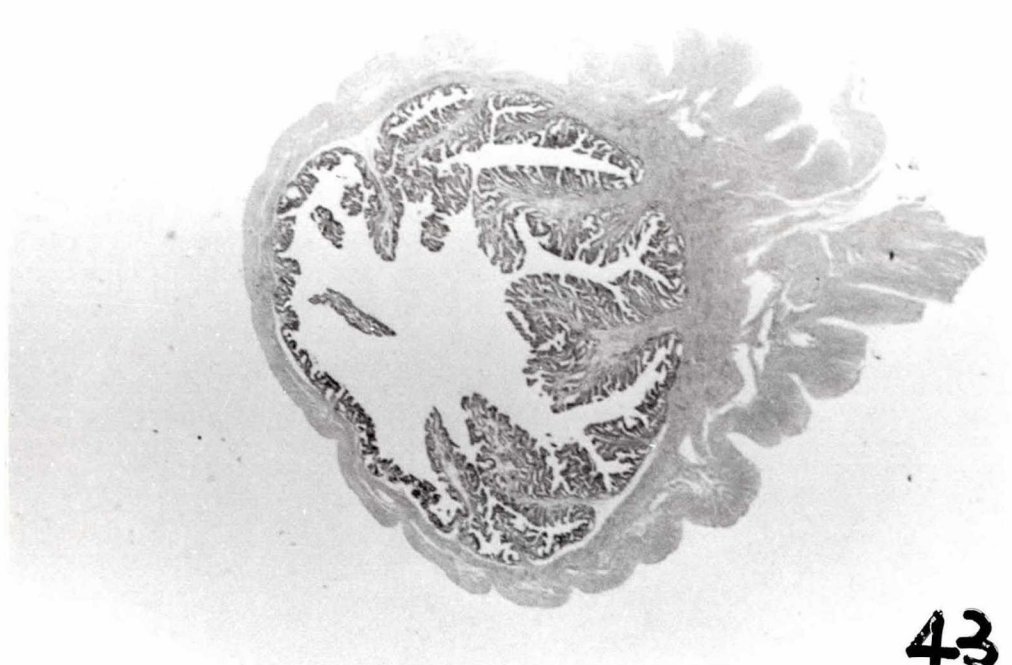




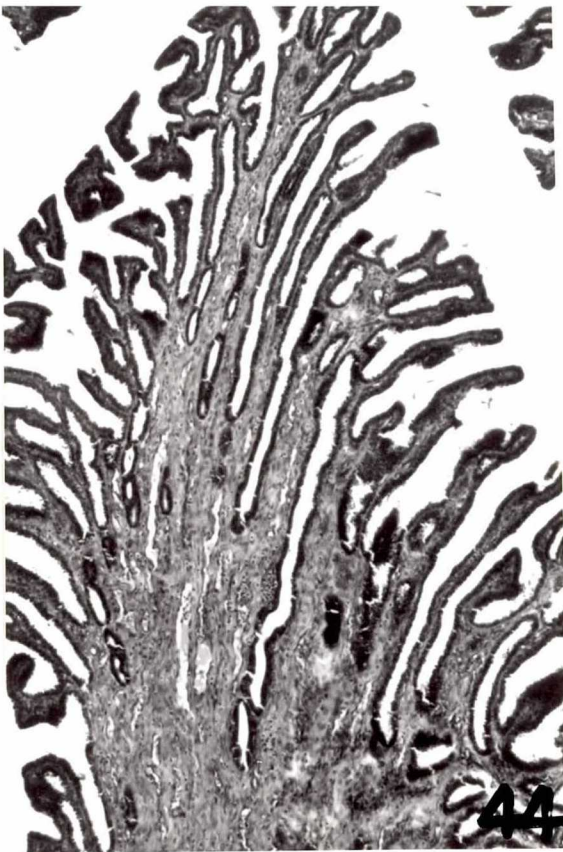




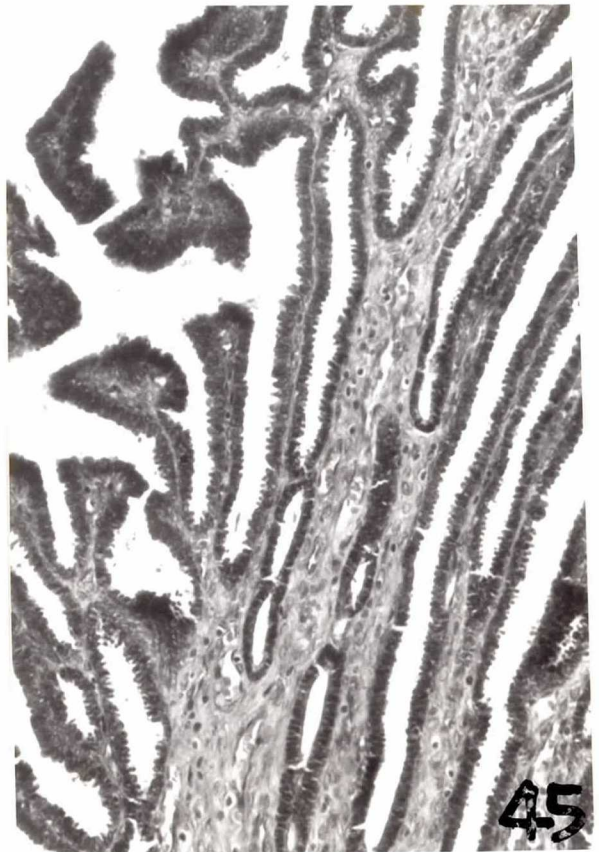




43

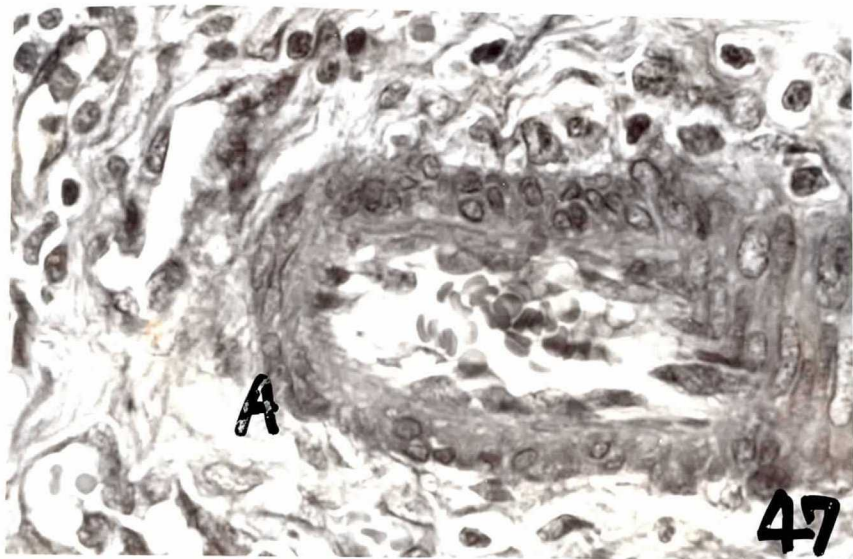
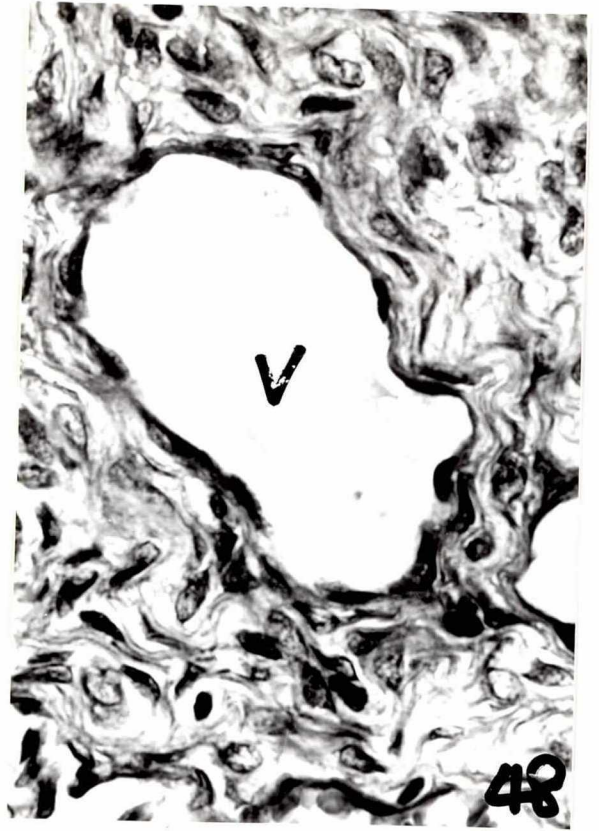
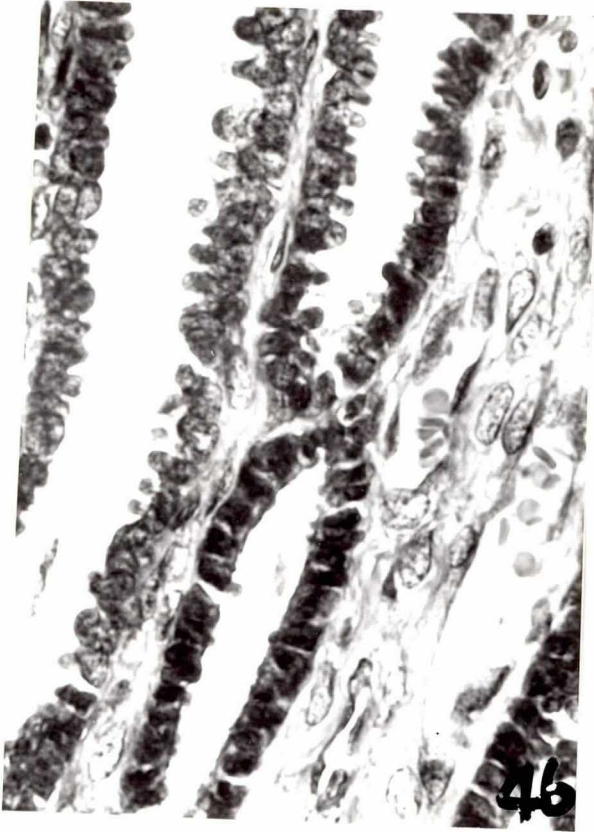


44



45











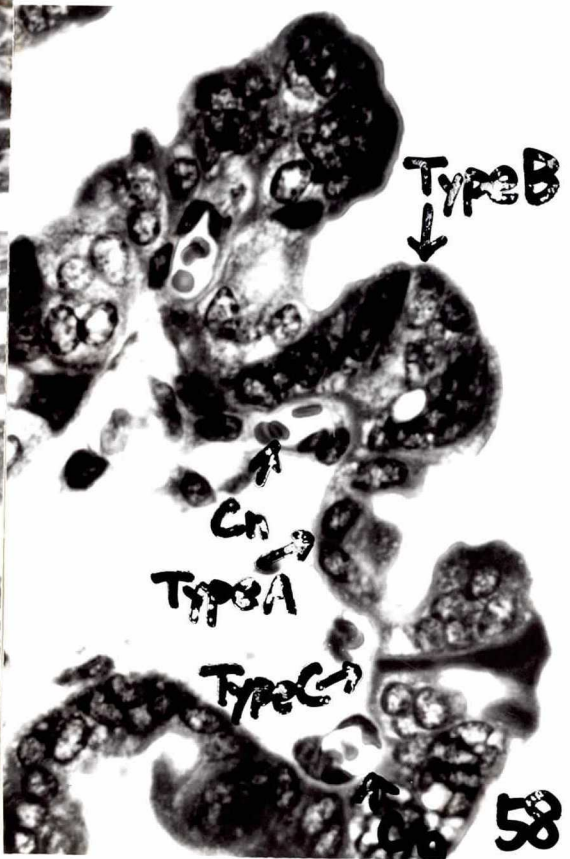
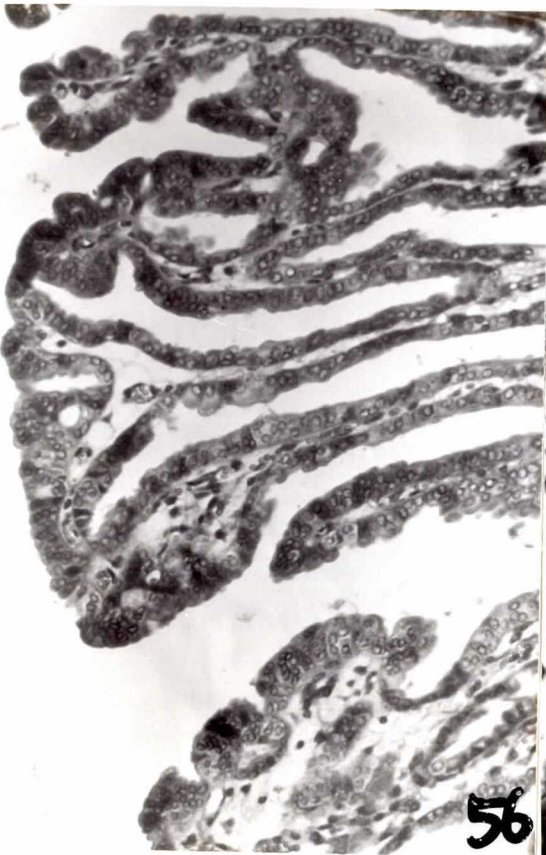
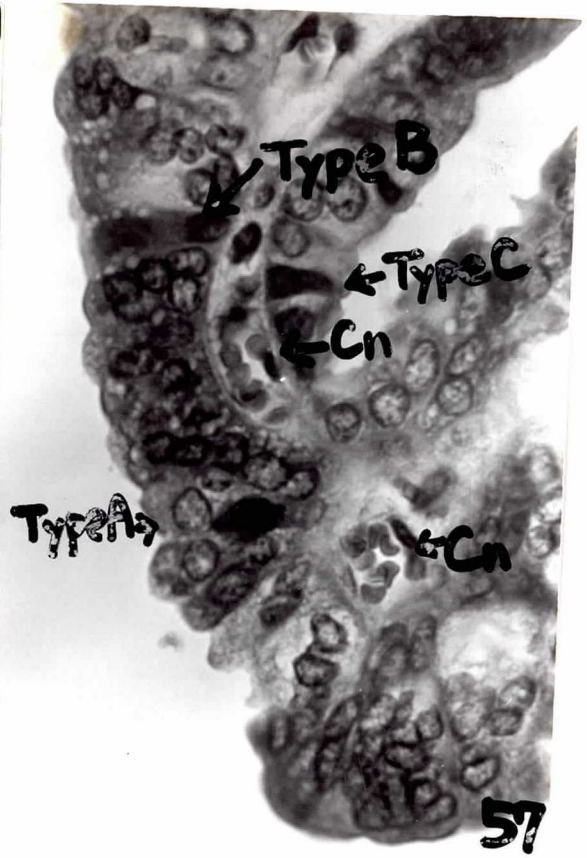
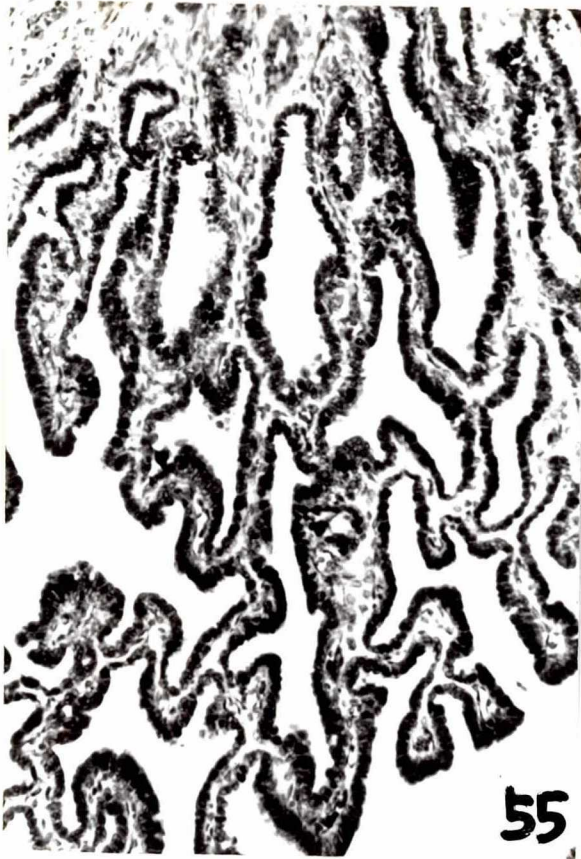
50



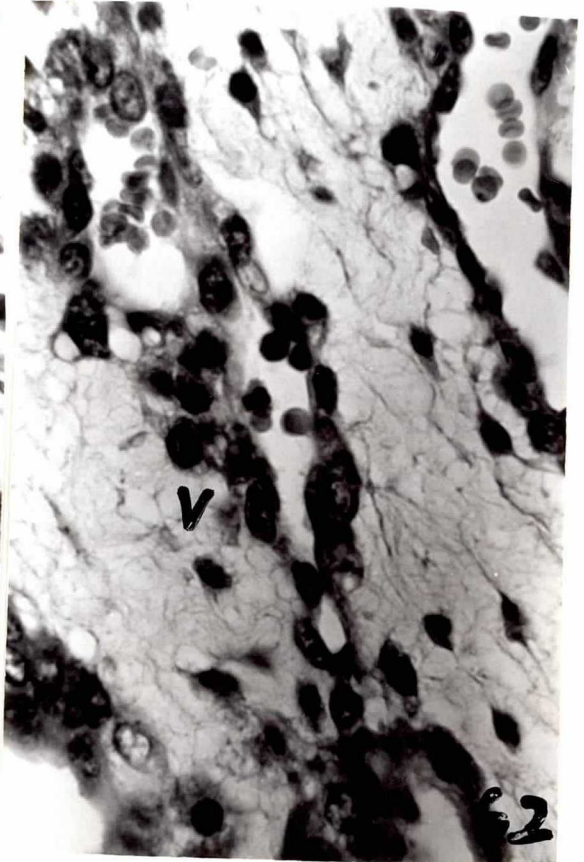
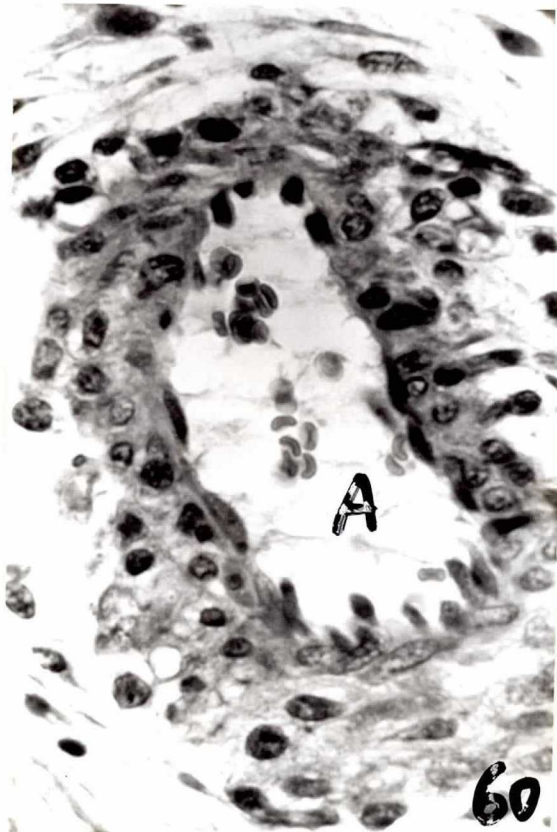
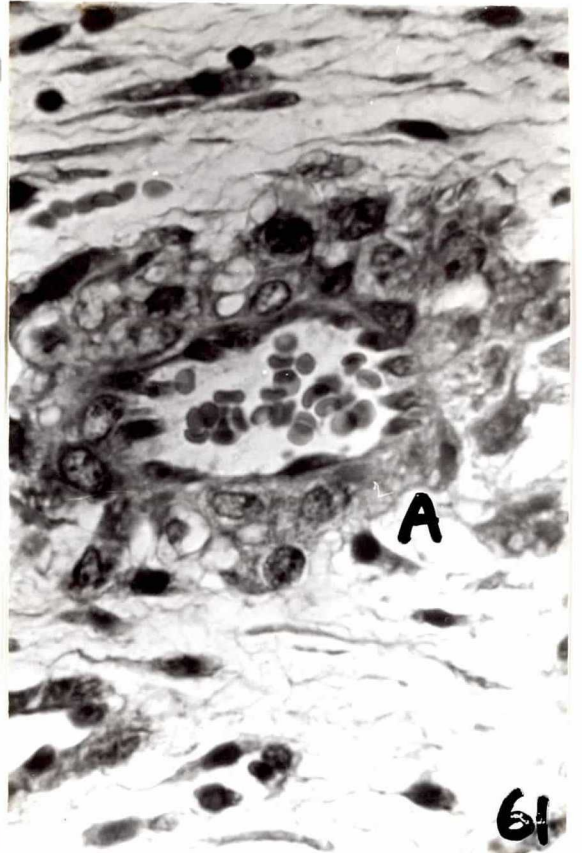
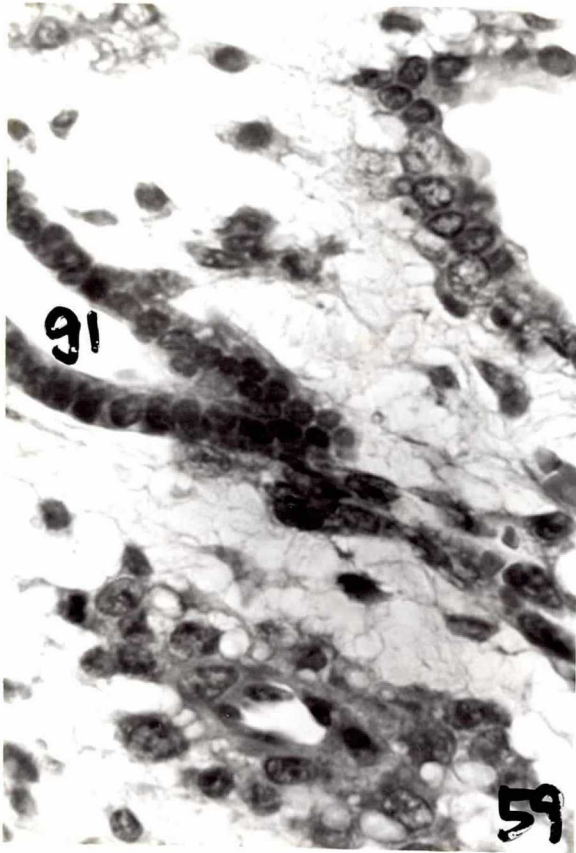


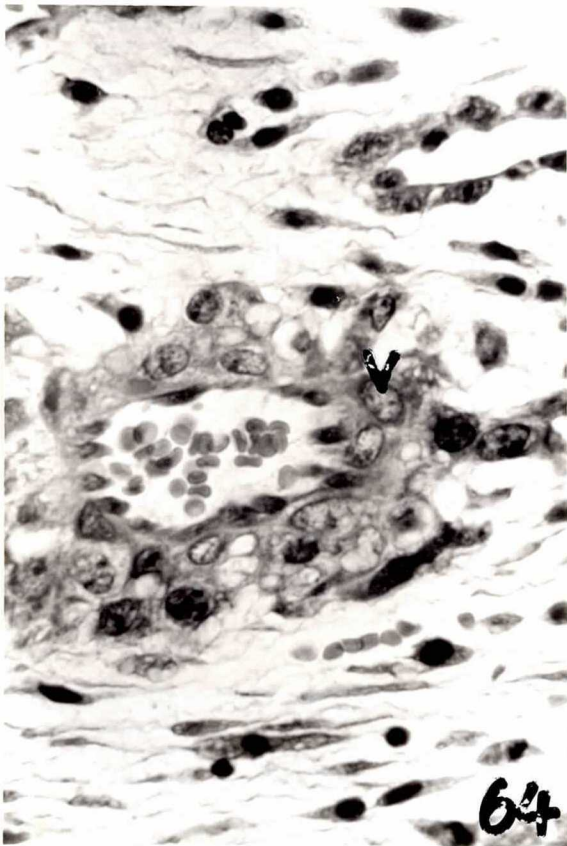
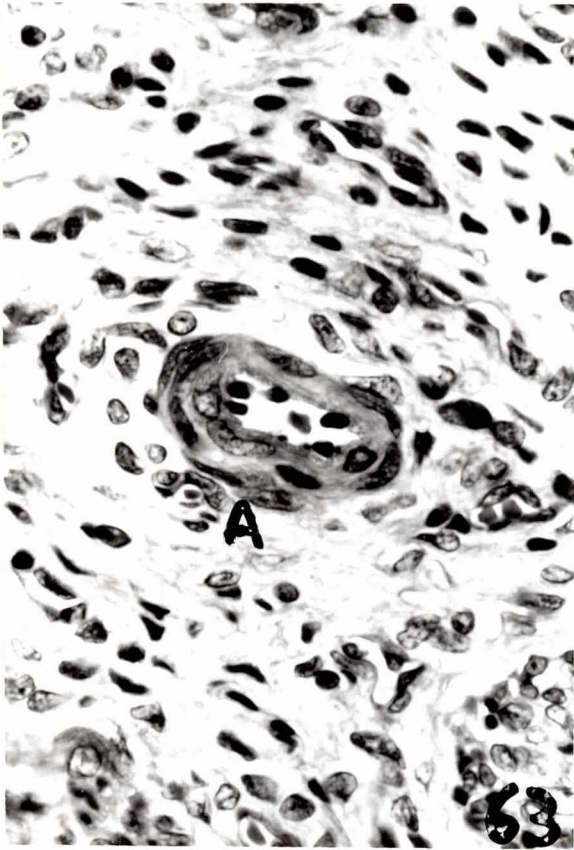


54

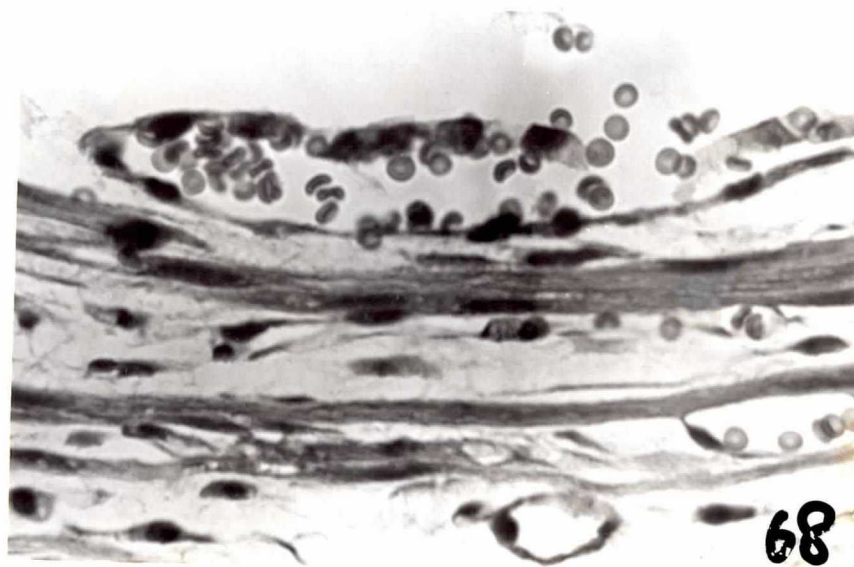
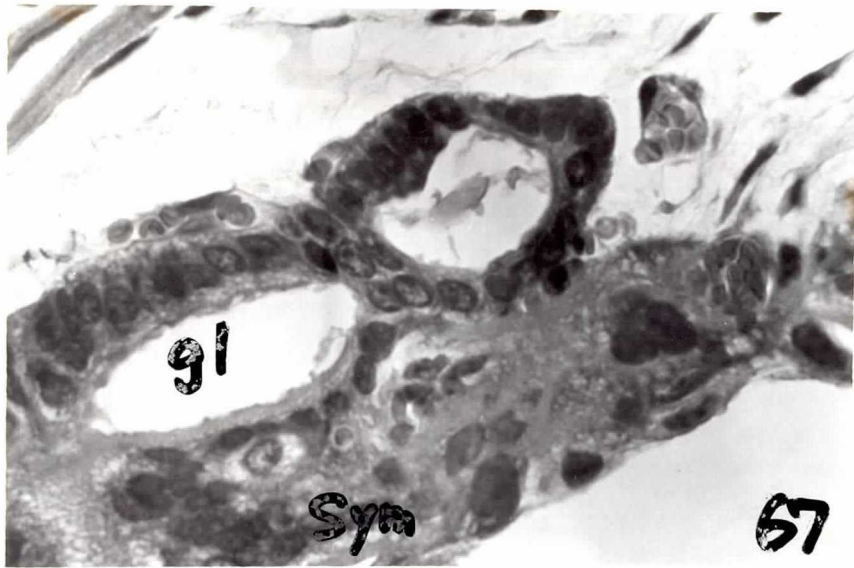


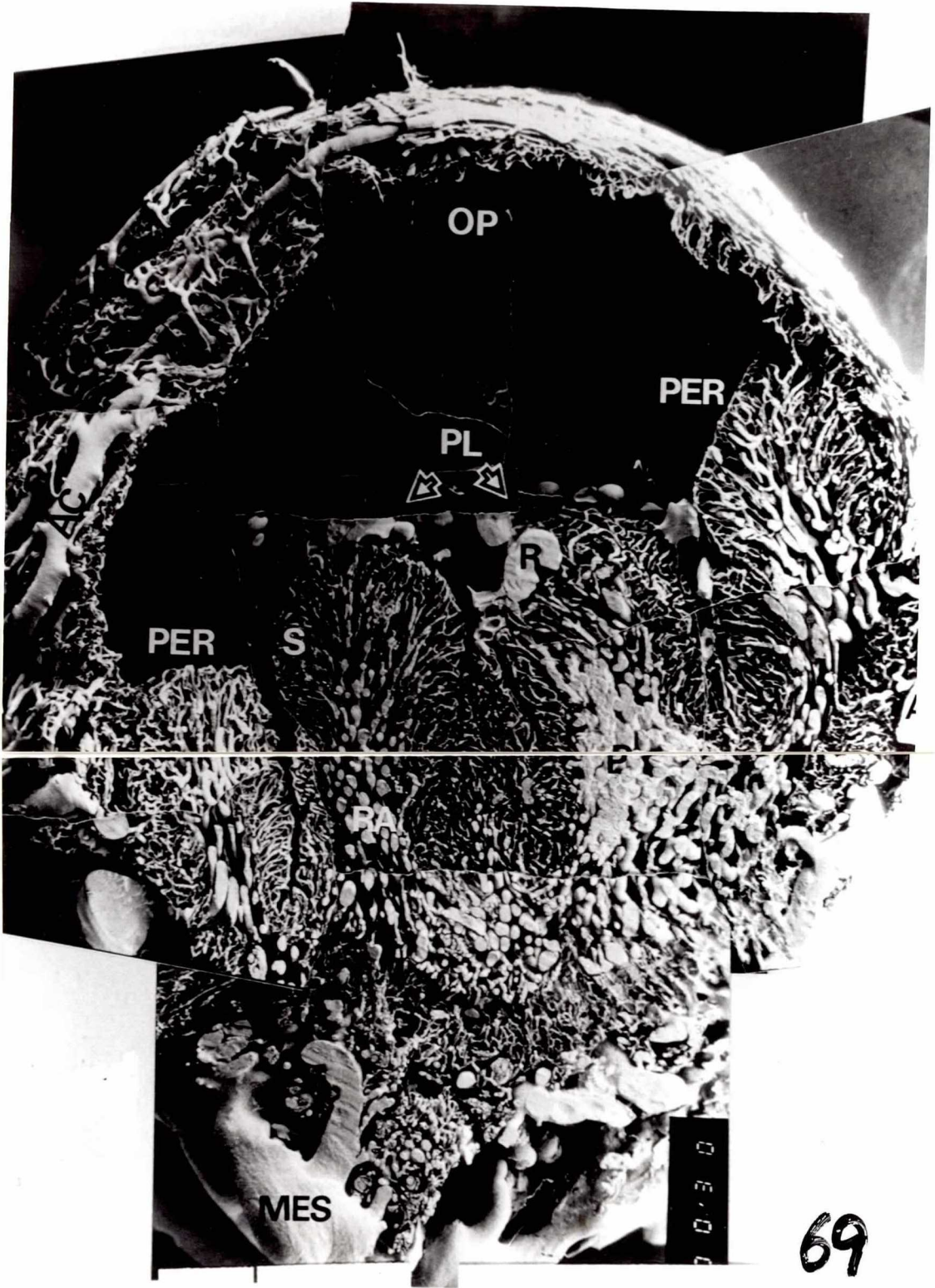




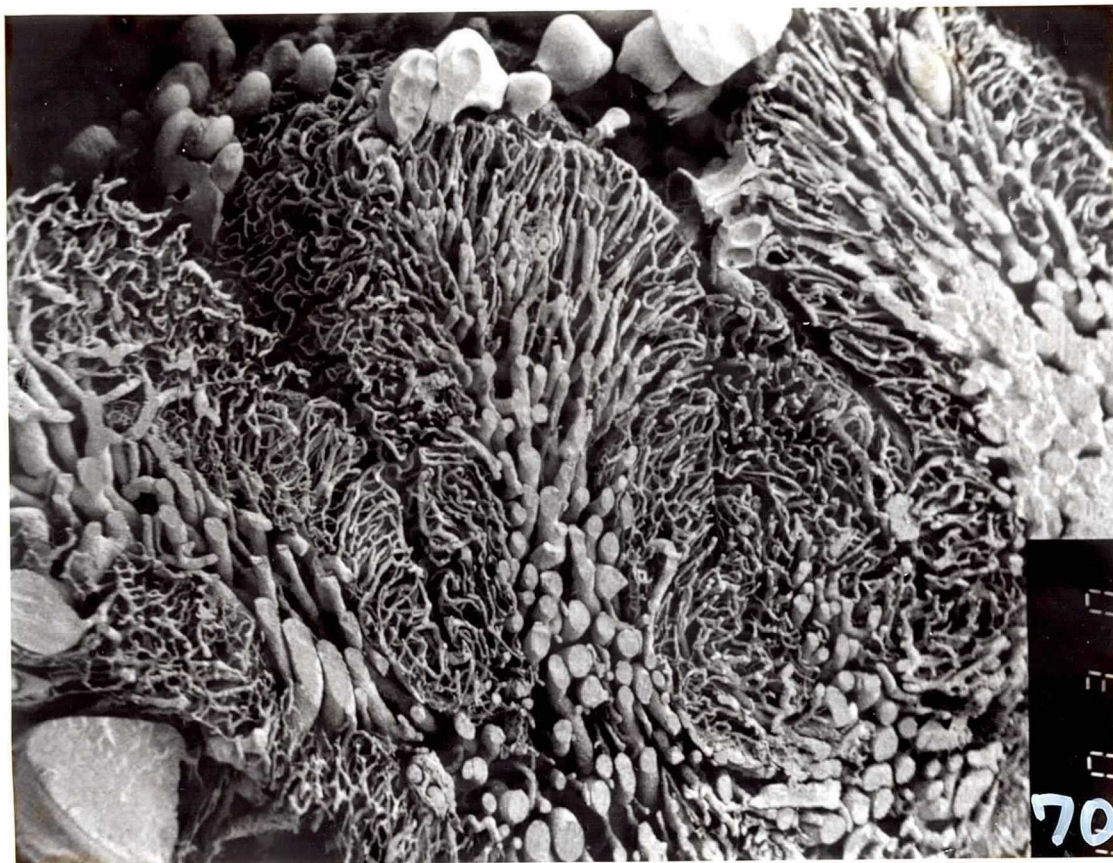










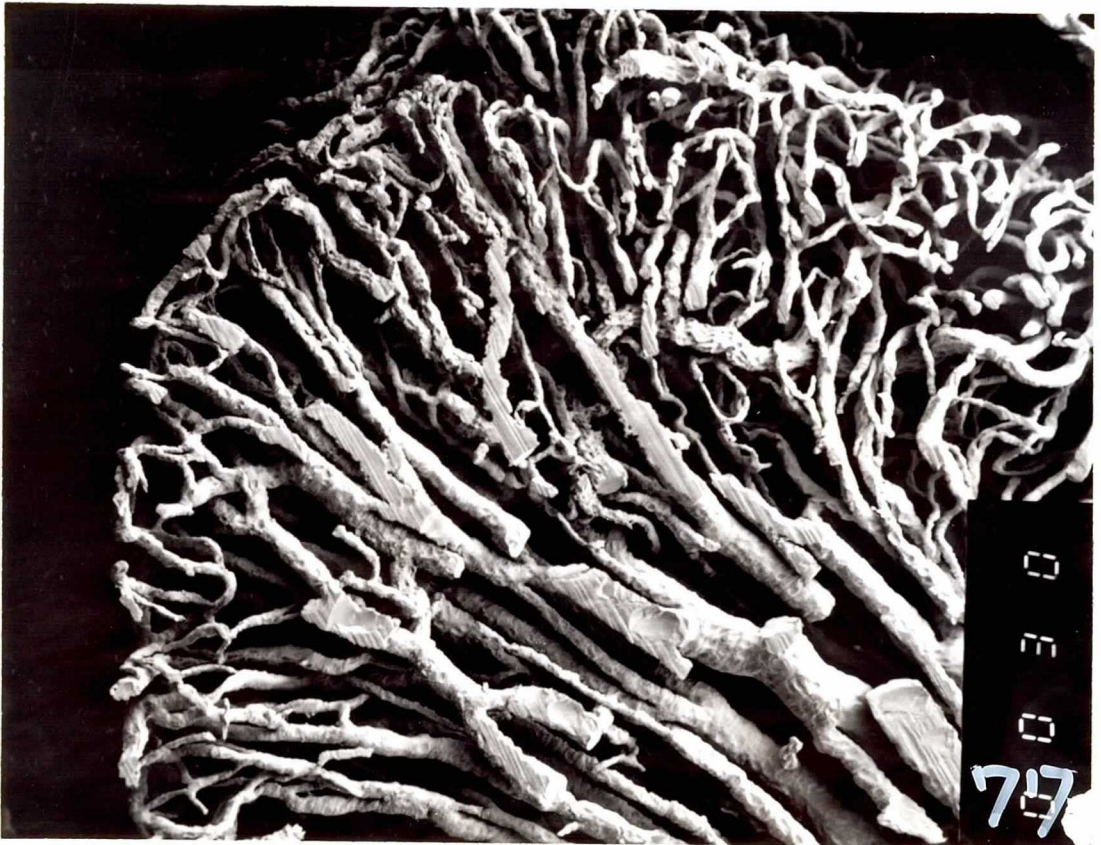




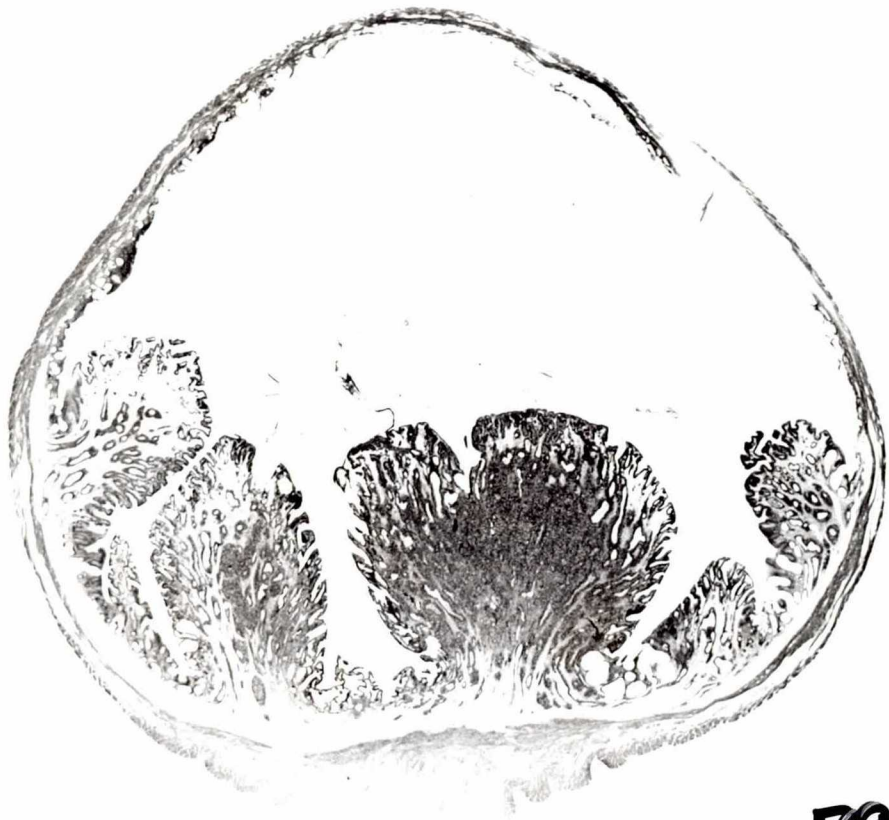












78

