

12-23-2016

# High levels of iron supplementation prevents neural tube defects in the Fpn1 (ffe) mouse model.

Bethany A Stokes

Julia A Sabatino

Irene E. Zohn

*George Washington University*

Follow this and additional works at: [http://hsrc.himmelfarb.gwu.edu/smhs\\_peds\\_facpubs](http://hsrc.himmelfarb.gwu.edu/smhs_peds_facpubs)

 Part of the [Nervous System Diseases Commons](#), [Neurology Commons](#), and the [Pediatrics Commons](#)

---

## APA Citation

Stokes, B., Sabatino, J., & Zohn, I. E. (2016). High levels of iron supplementation prevents neural tube defects in the Fpn1 (ffe) mouse model. *Birth defects research. Part A, Clinical and molecular teratology*, (). <http://dx.doi.org/10.1002/bdra.23542>

This Journal Article is brought to you for free and open access by the Pediatrics at Health Sciences Research Commons. It has been accepted for inclusion in Pediatrics Faculty Publications by an authorized administrator of Health Sciences Research Commons. For more information, please contact [hsrc@gwu.edu](mailto:hsrc@gwu.edu).

# High Levels of Iron Supplementation Prevents Neural Tube Defects in the *Fpn1<sup>ffe</sup>* Mouse Model

Bethany A. Stokes<sup>1,2</sup>, Julia A. Sabatino<sup>2</sup>, and Irene E. Zohn<sup>\*2</sup>

**Background:** Periconception maternal nutrition and folate in particular are important factors influencing the incidence of neural tube defects (NTDs). Many but not all NTDs are prevented by folic acid supplementation and there is a pressing need for additional strategies to prevent these birth defects. Other micronutrients such as iron are potential candidates, yet a clear role for iron deficiency in contributing to NTDs is lacking. Our previous studies with the *flatiron* (*ffe*) mouse model of Ferroportin1 (*Fpn1*) deficiency suggest that iron is required for neural tube closure and forebrain development raising the possibility that iron supplementation could prevent NTDs. **Methods:** We determined the effect of periconception iron and/or folic acid supplementation on the penetrance of NTDs in the *Fpn1<sup>ffe</sup>* mouse model. Concurrently, measurements of folate and iron were made to ensure supplementation had the intended effects. **Results:** High levels of iron supplementation significantly reduced the incidence of NTDs in *Fpn1<sup>ffe</sup>* mutants. *Fpn1* deficiency resulted in reduced folate levels in both pregnant dams and embryos. Yet folic acid supplementation did not prevent NTDs in the *Fpn1<sup>ffe</sup>* model. Similarly,

forebrain truncations were rescued with iron. Surprisingly, the high levels of iron supplementation used in this study caused folate deficiency in wild-type dams and embryos. **Conclusion:** Our results demonstrate that iron supplementation can prevent NTDs and forebrain truncations in the *Fpn1<sup>ffe</sup>* model. Surprisingly, high levels of iron supplementation and iron overload can cause folate deficiency. If iron is essential for neural tube closure, it is possible that iron deficiency might contribute to NTDs.

Birth Defects Research (Part A) 00:000–000, 2016.

© 2016 The Authors Birth Defects Research Part A: Clinical and Molecular Teratology Published by Wiley Periodicals, Inc.

**Key words:** neural tube defects; spina bifida; exencephaly; iron deficiency; folic acid supplementation

## Introduction

Neural tube defects (NTDs) are among the most common structural birth defects in humans affecting anywhere from 1 in 100 to 6 in 10,000 live births (Li et al., 2006; Parker et al., 2010; Zohn, 2012, 2014; Liu et al., 2016). NTDs such as anencephaly and spina bifida occur when neural tube closure fails in the anterior and posterior ends of the neural tube, respectively. The causes of NTDs are complex and involve both genetic and environmental factors (Zohn and Sarkar, 2008; Zohn, 2012, 2014). Multiple studies implicate periconception maternal nutrition as an important factor influencing the occurrence of NTDs and folic acid has

emerged as an important micronutrient (Smithells et al., 1976; Scott et al., 1990; Blom et al., 2006; Czeizel, 2009; Obican et al., 2010). Furthermore, human and animal studies demonstrate a clear benefit of folic acid supplementation for the prevention of NTDs (Czeizel, 2009; Gray and Ross, 2009; Harris, 2009; Obican et al., 2010).

To improve folate levels in women of childbearing age, wheat flour is now fortified with folic acid in many countries and is associated with significant reductions in the incidence of NTDs (Eichholzer et al., 2006; Crider et al., 2011; Obican et al., 2010). However, fortification has only reduced NTD rates to certain levels (Crider et al., 2011). Similarly, NTDs in many mouse models are not prevented by folic acid supplementation (Gray and Ross, 2009; Harris, 2009). Together these observations suggest that not all NTDs can be prevented by folic acid supplementation. Consequently, NTDs still represent a significant proportion of birth defects and there is a pressing need for additional strategies for prevention.

Other nutrients have emerged from retrospective studies as potential factors to influence the incidence of NTDs (Scott et al., 1990; Czeizel, 2009; Czeizel and Banhidy, 2011; Kappen, 2013). Iron deficiency is one of the most common micronutrient deficiencies in women of childbearing age (Lopez et al., 2016). Iron and folate deficiencies often occur simultaneously and iron and folate metabolism are linked in many ways (Herbig and Stover, 2002). However, unlike the wealth of data supporting the importance of folate in prevention of NTDs, only a handful of studies directly investigated the impact of iron and with mixed results (Weekes et al., 1992; Groenen et al., 2004; Felkner et al., 2005; Molloy

This is an open access article under the terms of the Creative Commons Attribution-NonCommercial-NoDerivs License, which permits use and distribution in any medium, provided the original work is properly cited, the use is non-commercial and no modifications or adaptations are made. Additional Supporting Information may be found in the online version of this article.

<sup>1</sup>Department of Biology, The George Washington University, Washington, DC

<sup>2</sup>Center for Neuroscience Research, Children's Research Institute, Children's National Medical Center, Washington, DC

Supported by a grant from the Board of Visitors to the Children's National Medical Center, R21-HD076202 from Eunice Kennedy Shriver National Institute of Child Health & Human Development and Award Number UL1RR031988 from the National Center for Research Resources. Microscopic analysis was carried out at the Children's Research Institute (CRI) Light Microscopy and Image Analysis Core supported by CRI and NIH grant P30HD040677.

\*Correspondence to: Irene E. Zohn, Center for Neuroscience Research, Children's Research Institute, Children's National Medical Center, Washington, DC 20010, USA. E-mail: izohn@cnmc.org

Published online 0 Month 2016 in Wiley Online Library (wileyonlinelibrary.com).  
Doi: 10.1002/bdra.23542

et al., 2014). Mouse models with disruption of iron homeostasis have not provided clarity due to early embryonic lethality or redundancy (De Domenico et al., 2008).

Our previous studies suggested iron might be required for neural tube closure (Zohn et al., 2007; Mao et al., 2010). In the N-ethyl-N-nitroso-urea (ENU)-induced *flat-iron* (*ffe*) mouse line, we identified a hypomorphic mutation in the iron exporter *Fpn1* resulting in NTDS. During neurulation, *Fpn1* is expressed in tissues essential for delivery of nutrients to the embryo (Donovan et al., 2000, 2005). Conditional deletion studies demonstrate that *Fpn1* expression in the visceral endoderm and visceral endoderm-derived lineages of the yolk sac is critical for neural development (Mao et al., 2010). Multiple transporters are localized to the apical surface of the visceral endoderm to mediate iron uptake from the maternal environment, but *Fpn1* is the only transporter on the basal surface responsible for export of iron out of the visceral endoderm to the developing embryo (Donovan et al., 2005). Thus mutation of *Fpn1* is expected to result in iron overload in the visceral endoderm along with iron deficiency in the embryo proper.

The visceral endoderm not only provides nutrients to the embryo, but also functions as a specialized signaling center necessary for induction of the anterior neural tube (Srinivas, 2006; Stower and Srinivas, 2014). Mutations that affect formation and/or function of the anterior visceral endoderm (AVE) result in a spectrum of phenotypes ranging from mild anterior truncations to headless embryos (Thomas and Beddington, 1996; Acampora et al., 1998; Kimura et al., 2000). The AVE initially forms at the distal end of the embryo and migrates to the anterior region to overlie the nascent anterior neural plate (Thomas and Beddington, 1996; Rodriguez et al., 2001; Srinivas et al., 2004). In addition to neural tube closure defects, *Fpn1* mutants show forebrain truncations that are also dependent on expression of *Fpn1* in the visceral endoderm lineage (Mao et al., 2010). Because forebrain truncations can be phenocopied by culture of wild-type embryos with iron chelators, iron deficiency is likely responsible for these defects (Mao et al., 2010).

Migration of the AVE is impaired in *Fpn1<sup>ffe/null</sup>* transheterozygous embryos indicating that iron overload in the visceral endoderm might also have a negative impact on embryonic development (Mao et al., 2010). While a sizable domain of anterior forebrain is initially induced in *Fpn1* mutants, this anterior neural tissue is not maintained and by embryonic day 8.5 the forebrain is severely truncated. Thus, defects in *Fpn1* mutants could be due to iron overload in the visceral endoderm, iron deficiency in the embryo proper or a combination of the two. To begin to distinguish between these possibilities, in this study we supplemented *Fpn1<sup>ffe</sup>* mice with relatively high levels of iron. Because of the hypomorphic nature of the *Fpn1<sup>ffe</sup>* mutation, this is predicted to increase iron overload in the

visceral endoderm but at the same time, increase iron transport to the embryo. Our data demonstrate that periconceptional iron supplementation reduced the incidence of NTDS in *Fpn1* mutants. While additional experiments will be necessary to definitively demonstrate this, our data support the idea that NTDS might be due to iron deficiency rather than iron overload in the visceral endoderm. Surprisingly, we found that *Fpn1* mutation results in folate deficiency in wild-type and *Fpn1<sup>ffe/+</sup>* dams and mutant embryos. Yet folic acid supplementation, while improving folate status, did not prevent NTDS in the *Fpn1<sup>ffe</sup>* model.

## Materials and Methods

### MOUSE LINES AND DIET SUPPLEMENTATION

The *Fpn1<sup>ffe</sup>* mouse line was described previously (Zohn et al., 2007) and crossed onto a C3H background (C3H/HeNcrI, Charles River Laboratories) for at least 10 generations before analysis. The diets used in this study are based on the AIN-76A rodent diet and were manufactured by Research Diets, Inc (New Brunswick, NJ). High iron diets have added 0.5% carbonyl iron (Sigma) and folic acid supplementation with 10 ppm folic acid compared with 2 ppm in the control diet. A different color dye was added to each diet for ease of identification. Wild-type or *Fpn1<sup>ffe/+</sup>* females from crosses between wild-type females and *Fpn1<sup>ffe/+</sup>* males were switched from standard rodent chow (Tekland Global #2918 with 200 mg/kg iron and 4 mg/kg folate) to the four diets at weaning for approximately 4 weeks before mating.

### MATING EXPERIMENTS AND PHENOTYPIC ANALYSIS

Females were mated with wild-type or *Fpn1<sup>ffe/+</sup>* males and copulation verified by the presence of a vaginal plug 0.5 days post coitum (dpc). Pregnant females were kept on diets until sacrificed at 9.5 or 11.5 dpc. Upon sacrifice, maternal blood was retrieved by cardiac puncture. Blood was allocated to heparin-coated tubes for analysis of folate levels in whole blood, uncoated Eppendorf tubes for serum separation and analysis of serum ferritin levels or EDTA (Ethylenediaminetetraacetic acid) coated tubes for complete blood counts (CBCs). Embryos were dissected and exencephaly assessed by visual inspection. Yolk sacs were used to genotype embryos as described previously (Zohn et al., 2007; Mao et al., 2010). A proportion of embryos dissected at 9.5 dpc were subjected to in situ hybridization analysis with a digoxigenin-labeled antisense probe targeting *Six3* (Mao et al., 2010). These embryos were also used to measure the size of the forebrain, crown-rump length, and somite numbers. Embryos dissected at 11.5 dpc were used for analysis of folate levels.

### ANALYSIS OF FERRITIN AND FOLATE IN DAMS AND EMBRYOS

Serum ferritin levels were determined by enzyme-linked immunosorbent assay (ELISA) according to manufacturer's instructions (Abnova Ferritin [Mouse] ELISA Kit #KA1941). Folate levels were determined by the

microbiological method using *Enterococcus hirae* (ATCC 8043) as described (Horne and Patterson, 1988; Molloy and Scott, 1997). For determination of folate content in embryos, 11.5 dpc embryos were processed as described (Kur et al., 2014) then folate levels determined by the Microbiological assay. Blood samples were sent to Charles River Laboratories, Inc (USA) for CBC analysis.

#### STATISTICAL METHODS

Statistical analyses were performed using GraphPad Prism software (GraphPad Software Inc., La Jolla, CA). All results are reported as mean  $\pm$  SE. The Fisher's exact test was used to determine significance of reductions in NTD frequency. The significance of the effect of diets on nutrient levels and CBC analyses were determined using two-factor analysis of variance (ANOVA) with posthoc analysis by Sidak's multiple comparisons or Tukey tests as indicated. Significance of changes in forebrain size, embryo weight, and crown rump length were determined by the unpaired *t* test.

## Results

### IRON SUPPLEMENTATION REDUCES THE INCIDENCE OF NTD IN $FPN1^{FFE/FFE}$ MUTANT EMBRYOS

To determine if iron supplementation could reduce the incidence of NTD in  $Fpn1^{ffe/ffe}$  mutant embryos,  $Fpn1^{ffe/+}$  females were fed either a standard synthetic control diet or the identical diet supplemented with 0.5% carbonyl iron for 4 weeks beginning at weaning. Supplemented females were mated to  $Fpn1^{ffe/+}$  males and timed pregnancies recorded. For these studies, a relatively high dosage of supplemental iron (0.5% carbonyl iron) was used. Previous work demonstrated that the  $Fpn1^{ffe}$  mutation results in greatly reduced activity of the Fpn1 iron transporter (Zohn et al., 2007). Thus, we reasoned a high dosage of iron would be needed to allow for sufficient iron transport on this hypomorphic mutant background.

While  $Fpn1^{ffe/ffe}$  mutants do show both exencephaly and spina bifida (Mao et al., 2010), spina bifida is difficult to assess at earlier stages of development and only exencephaly was scored in this study. At 9.5 dpc, exencephaly was counted in 13 to 24 somite-staged embryos by visual inspection when the neural folds failed to transform from the convex to midline convergent morphology. In embryos dissected at 11.5 dpc, exencephaly was scored when the brain exhibited the "cauliflower like" morphology typical of exencephaly. As shown in Figure 1, the frequency of NTDs in embryos from dams fed the control diet was approximately 75% ( $n = 48$ ). Supplementation with 0.5% carbonyl iron significantly reduced the incidence of NTDs to 40% ( $p = 0.0002$ ). No difference was observed in the frequency of NTDs between embryos analyzed at 9.5 and 11.5 dpc (Supporting Figure S1, which is available online). These data demonstrate that NTDs in  $Fpn1^{ffe}$  mutants can be prevented by periconceptional iron supplementation.

At 9.5 dpc, crown-rump measurements indicate that  $Fpn1^{ffe}$  mutant embryos were smaller than wild-type littermates on both the control ( $p = 0.06$ ) and high iron ( $p \leq 0.01$ ) diets (Fig. 2A). While smaller, mutant embryos dissected at 9.5 dpc were not developmentally delayed compared with wild-type littermates as indicated by somite numbers (Fig. 2B). Similarly, developmental stage was essentially the same in embryos dissected at 9.5 dpc from dams fed the control versus high iron diets (Fig. 2B). Weights of wild-type versus mutant embryos dissected at 11.5 dpc from dams fed either control or high folic acid diets were similar ( $p > 0.05$ ). However, weights of mutant and wild-type embryos from dams fed the high iron diet were smaller than embryos from dams fed the control diets ( $p \leq 0.005$ ; Fig. 2C).

### NTDS IN THE $FPN1^{FFE/FFE}$ LINE ARE NOT PREVENTED BY FOLATE SUPPLEMENTATION

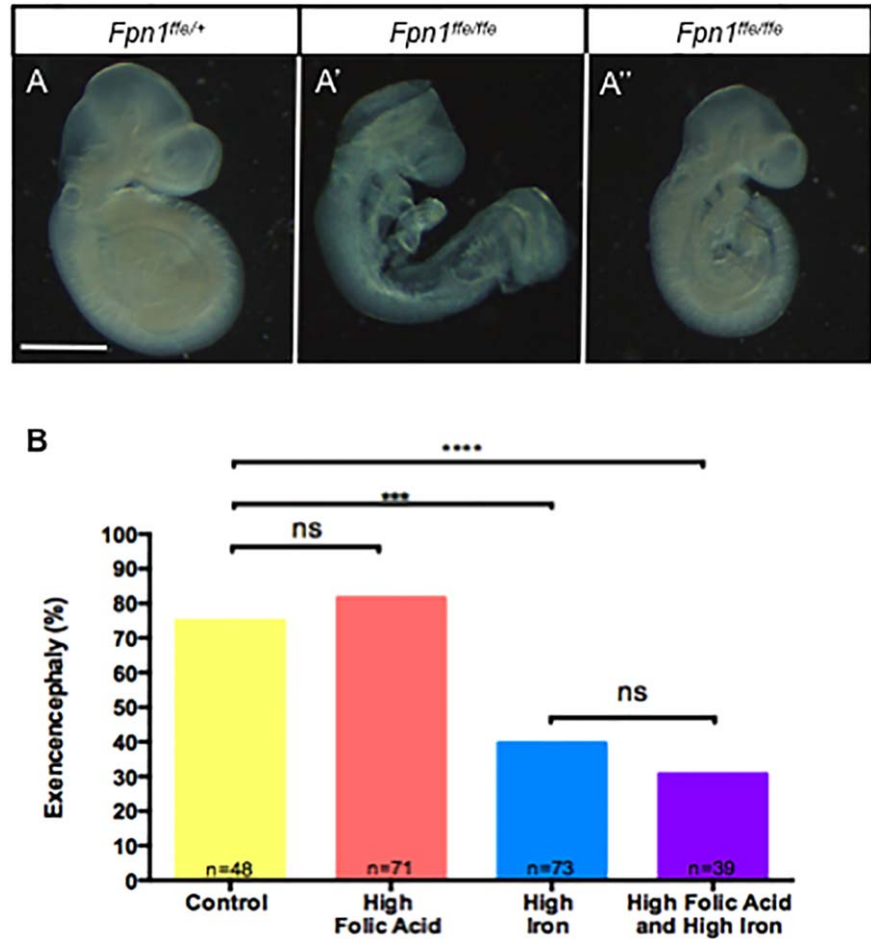
To determine if folic acid supplementation can prevent NTDs in the  $Fpn1^{ffe}$  model, heterozygous females were a fed diet containing 10 or 2 ppm folic acid (high folic acid and control diets, respectively) for 4 weeks before mating. This protocol prevents NTDs in some mouse lines (Carter et al., 1999; Marean et al., 2011), but in others has a negative impact on embryonic development (Marean et al., 2011). While no obvious adverse effects on development were observed on the  $Fpn1^{ffe}$  background, folic acid supplementation did not reduce the frequency of NTDs in  $Fpn1^{ffe/ffe}$  mutants (Fig. 1B; 82 vs. 75%  $p > 0.05$ ). To determine if dual supplementation with folic acid and iron could further reduce the incidence of NTDs,  $Fpn1^{ffe/+}$  females were supplemented with a diet that contains both 10 ppm folic acid and 0.5% carbonyl iron. Dual supplementation did not reduce the frequency of NTDs beyond the reduction seen with iron supplementation alone (31 vs. 40%;  $p > 0.05$ ). These results demonstrate that NTDs in the  $Fpn1^{ffe/ffe}$  mutant line are not prevented by folate supplementation.

Folate supplementation alone had no effect on the size of 9.5 dpc mutant embryos, but dual supplementation improved crown-rump length of mutant embryos ( $p \leq 0.05$ ; Fig. 2A). On the other hand, somite/developmental stage was not altered by maternal diet ( $p > 0.05$ ; Fig. 2B). Weights of embryos dissected at 11.5 dpc were similar between wild-type and mutant embryos from folate or dual supplemented dams; and dual supplementation restored the reduction in embryo weight observed with iron supplementation (Fig. 2C).

### IRON SUPPLEMENTATION INCREASES THE IRON STATUS OF WILD-TYPE AND $FPN1^{FFE/+}$ DAMS

The effect of supplementation on iron status of wild-type and  $Fpn1^{ffe/+}$  dams was determined. Measurements of ferritin levels in the serum of pregnant dams served as a proxy of stored iron (Fig. 3). Maternal ferritin levels were increased with iron supplementation in both wild-type

**FIGURE 1.** Periconceptional supplementation with a high iron diet but not folic acid prevents NTDs in the *Fpn1<sup>ffe</sup>* mouse line. Normal neural tube closure in a 9.5 dpc *Fpn1<sup>ffe/+</sup>* embryo (A) compared with exencephaly in an *Fpn1<sup>ffe/ffe</sup>* mutant (A') from a dam fed the control diet. (A'') Normal morphology and neural tube closure in an *Fpn1<sup>ffe/ffe</sup>* mutant from a dam fed the high iron diet. Scale bar = 1 mm. **B:** Frequency of NTDs in *Fpn1<sup>ffe/ffe</sup>* mutant embryos from dams supplemented with control (yellow bar), high folic acid (10 ppm, orange bar), high iron (0.5% carbonyl iron, blue bar), or high folic acid and iron (purple bar) diets for 4 weeks before mating. Statistical significance was determined by the Fisher's exact test and *p*-values: =0.0002\*\*\*, ≤0.0001\*\*\*\*, or non-significant (ns). The number of samples represented in each group is indicated.



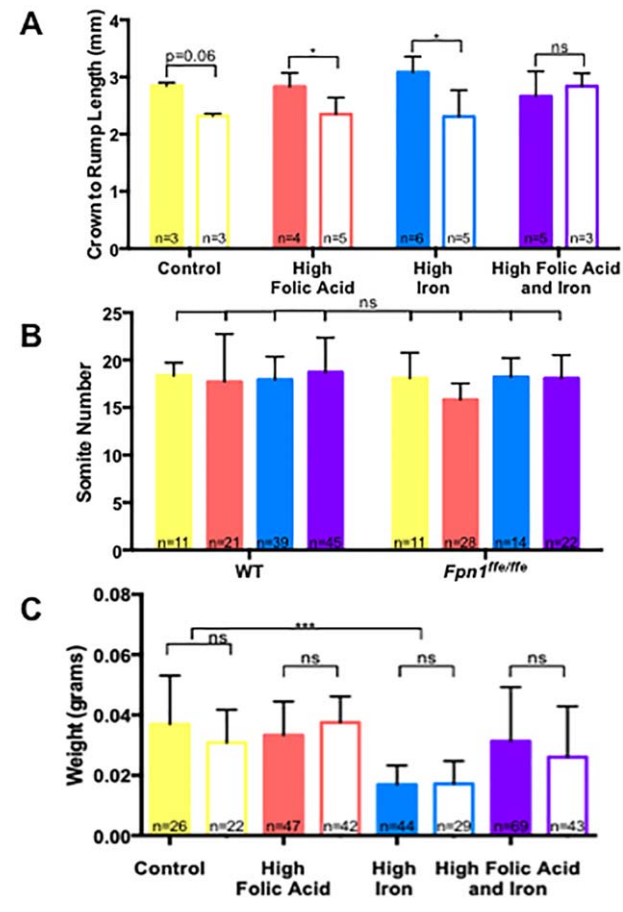
dams ( $1.51 \pm 0.45$  vs.  $7.85 \pm 1.00$   $\mu\text{g}$  ferritin/ml;  $p \leq 0.001$ ) and to a greater degree in *Fpn1<sup>ffe/+</sup>* dams ( $2.32 \pm 0.46$  vs.  $15.81 \pm 1.94$   $\mu\text{g}$  ferritin/ml;  $p \leq 0.0001$ ). This enhanced increase in ferritin was expected because the *Fpn1<sup>ffe</sup>* is a model of the iron overload disorder hemochromatosis type IV (Zohn et al., 2007). Folic acid supplementation did not alter the iron status of neither wild-type ( $1.51 \pm 0.45$  vs.  $0.79 \pm 0.27$   $\mu\text{g}$  ferritin/ml;  $p > 0.05$ ) nor *Fpn1<sup>ffe/+</sup>* dams ( $2.32 \pm 0.46$  vs.  $1.81 \pm 0.19$   $\mu\text{g}$  ferritin/ml;  $p > 0.05$ ). Dual supplementation with iron and folic acid had no further effect on elevated iron status in wild-type dams ( $7.87 \pm 1.00$  vs.  $7.29 \pm 0.71$   $\mu\text{g}$  ferritin/ml;  $p > 0.05$ ). In *Fpn1<sup>ffe/+</sup>* dams, dual supplementation reduced the iron overload observed with iron supplementation alone ( $7.63 \pm 2.41$  vs.  $15.81 \pm 1.94$   $\mu\text{g}$  ferritin/ml;  $p \leq 0.001$ ).

#### HIGH DOSE IRON SUPPLEMENTATION INFLUENCES FOLATE STATUS

To determine if folic acid supplementation increased folate status of dams, the folate content of whole maternal blood was compared between wild-type and *Fpn1<sup>ffe</sup>* dams (Fig.

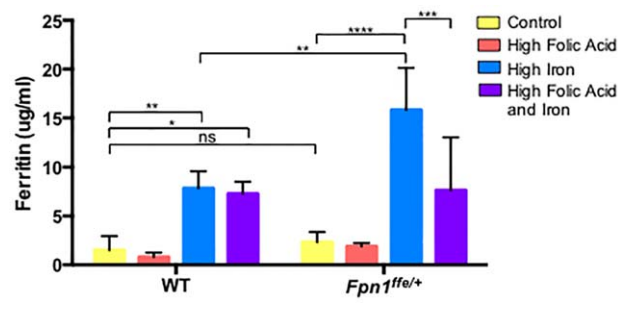
4A). Folate levels were lower in blood from pregnant *Fpn1<sup>ffe/+</sup>* females than wild-type dams fed a control diet ( $34.99 \pm 1.48$  vs.  $42.69 \pm 1.55$  ng folate/ml;  $p \leq 0.05$ ), indicating that *Fpn1* deficiency has some impact on folate status. Folate levels increased with folic acid supplementation in both wild-type ( $42.69 \pm 1.55$  vs.  $50.83 \pm 1.82$  ng folate/ml;  $p \leq 0.05$ ) and *Fpn1<sup>ffe/+</sup>* ( $34.99 \pm 1.48$  vs.  $47.29 \pm 1.95$  ng folate/ml;  $p \leq 0.001$ ) dams. Surprisingly, supplementation with 0.5% carbonyl iron significantly reduced maternal folate levels in wild-type dams ( $42.69 \pm 1.55$  vs.  $21.60 \pm 2.20$  ng folate/ml;  $p \leq 0.0001$ ), which was ameliorated by dual supplementation ( $42.69 \pm 1.55$  vs.  $37.63 \pm 3.75$  ng folate/ml;  $p > 0.05$ ). Folate levels were also reduced in *Fpn1<sup>ffe/+</sup>* dams on the high iron diet ( $42.69 \pm 1.55$  vs.  $26.49 \pm 0.95$  ng folate/ml;  $p \leq 0.001$ ) and improved with dual supplementation ( $42.69 \pm 1.55$  vs.  $32.14 \pm 1.15$  ng folate/ml;  $p \leq 0.05$ ).

Folate levels were also measured in embryos dissected at 11.5 dpc (Fig. 4B). *Fpn1<sup>ffe/ffe</sup>* mutant embryos showed reduced folate levels compared with wild-type littermates ( $35.69 \pm 3.17$  vs.  $13.17 \pm 2.62$  ng folate/g protein;  $p \leq$

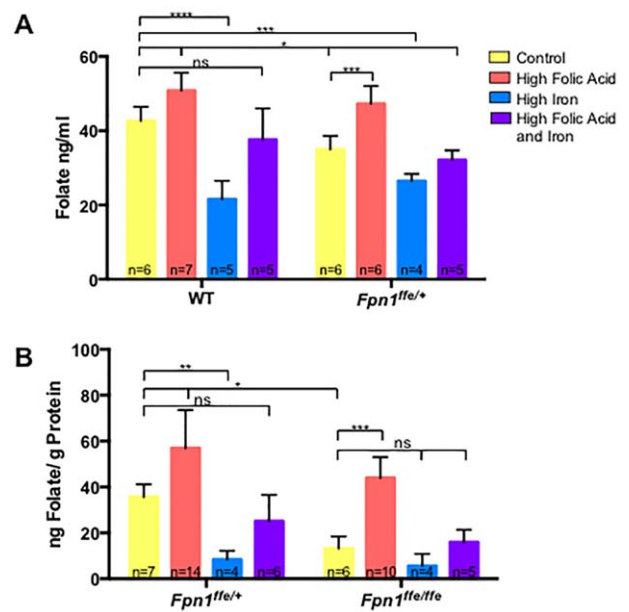


**FIGURE 2.** Effects of iron and folate supplementation on embryo size and developmental stage. Comparison of crown to rump length (A) and somite numbers (B) of embryos from *Fpn1<sup>ffe/ffe</sup>* mutant embryos (white bars in A) and wild-type littermates (colored bars in A) dissected at 9.5 dpc from dams supplemented with control (yellow), high folic acid (10 ppm, orange), high iron (0.5% carbonyl iron, blue), or high folic acid and iron (purple) diets for 4 weeks before mating. C: Comparison of weights of *Fpn1<sup>ffe/ffe</sup>* mutant embryos and wild-type littermates dissected at 11.5 dpc from dams fed the various diets for 4 weeks before mating. Statistical significance was determined by unpaired t test in A and C, and by two-factor ANOVA with posthoc Sidak's multiple comparisons test in B. p-values:  $\leq 0.05^*$ ,  $\leq 0.01^{**}$ , or nonsignificant (ns).

0.05). Folate levels did not correlate with NTDs when comparison was made between *Fpn1* mutants with or without NTDs from dams fed the control diet ( $16.71 \pm 7.76$  vs.  $23.08 \pm 8.52$  ng folate/gm protein;  $p > 0.05$ ,  $n = 3$ , not shown). Folate levels increased with folic acid supplementation in both *Fpn1<sup>ffe/ffe</sup>* mutant embryos ( $13.17 \pm 2.62$  vs.  $43.97 \pm 4.05$  ng folate/gm protein;  $p \leq 0.001$ ) and wild-type littermates ( $35.69 \pm 3.17$  vs.  $56.92 \pm 8.32$  ng folate/gm protein;  $p \leq 0.05$ ). Supplementation with 0.5% carbonyl iron greatly reduced folate levels in wild-type littermates ( $35.69 \pm 3.17$  vs.  $8.37 \pm 1.70$  ng folate/



**FIGURE 3.** Supplementation with a high iron diet increases iron stores in wild-type and *Fpn1<sup>ffe/+</sup>* dams. Serum was obtained from pregnant dams upon dissection of embryos at 9.5 or 11.5 dpc. Dams were supplemented with control (yellow bar), high folic acid (10 ppm, orange bar), high iron (0.5% carbonyl iron, blue bar), or high folic acid and iron (purple bar) diets for 4 weeks before mating. Ferritin levels were determined by ELISA and served as a proxy for stored iron levels. Maternal serum ferritin was measured in three samples in the wild-type (WT) group and five in the *Fpn1<sup>ffe/+</sup>* group. Statistical significance was determined by two-factor ANOVA with posthoc Sidak's multiple comparisons test. p-values:  $\leq 0.05^*$ ,  $\leq 0.01^{**}$ ,  $\leq 0.001^{***}$ ,  $\leq 0.0001^{****}$ , or nonsignificant (ns).



**FIGURE 4.** Folate levels in dams and embryos. A: Determination of RBC folate levels in pregnant dams. Whole blood was obtained from pregnant wild-type (WT) or *Fpn1<sup>ffe/+</sup>* dams at 9.5 or 11.5 dpc. Dams were supplemented with control (yellow bar), high folic acid (10 ppm, orange bar), high iron (0.5% carbonyl iron, blue bar), or high folic acid and iron (purple bar) diets for 4 weeks before mating. B: Determination of folate levels in 11.5 dpc wild-type (*Fpn1<sup>+/+</sup>*) and *Fpn1<sup>ffe/ffe</sup>* embryos from dams fed the various diets. The number of samples represented in each group is indicated. The Sidak's test was used to determine significance of multiple comparisons within a genotype and the Tukey test across genotypes. p-values:  $\leq 0.05^*$ ,  $\leq 0.01^{**}$ ,  $\leq 0.001^{***}$ ,  $\leq 0.0001^{****}$  or nonsignificant (ns). The number of samples represented in each group is indicated.

gm protein;  $p \leq 0.01$ ), which was restored with dual supplementation with iron and folic acid in wild-type embryos. Iron supplementation slightly but not significantly reduce folate levels in  $Fpn1^{ffe/ffe}$  mutant embryos ( $13.17 \pm 2.62$  vs.  $5.63 \pm 3.00$  ng folate/gm protein;  $p = 0.12$ ), which improved to control levels with dual supplementation ( $13.17 \pm 2.62$  vs.  $15.92 \pm 3.14$  ng folate/gm protein;  $p > 0.05$ ).

#### HIGH DOSE IRON SUPPLEMENTATION RESULTS IN MACROCYTIC ANEMIA TYPICAL OF FOLATE DEFICIENCY

Folate and iron status can affect the red blood cell (RBC) composition as measured by CBC analysis. Thus the effect of iron and folic acid supplementation on hematological parameters was determined (Table 1). There was no significant difference in total RBCs, hemoglobin, hematocrit, mean corpuscular volume, mean corpuscular hemoglobin, or RBC distribution width between wild-type or  $Fpn1^{ffe/+}$  dams on the control diet or with folate supplementation. The high iron diet reduced RBC numbers and increased both the mean corpuscular volume and mean corpuscular hemoglobin in both the wild-type and  $Fpn1^{ffe/+}$  dams (Table 1). These hematological findings are consistent with the macrocytic anemia that occurs with folate deficiency. Dual supplementation with iron and folic acid reverted these changes in the wild-type, but not  $Fpn1^{ffe/+}$  dams.

#### IRON SUPPLEMENTATION PREVENTS FOREBRAIN TRUNCATIONS IN $Fpn1^{ffe/ffe}$ MUTANT EMBRYOS

Our previous studies demonstrate that  $Fpn1^{ffe/ffe}$  mutant embryos show forebrain truncations (Mao et al., 2010). To determine if iron, folate, or combined supplementation can rescue forebrain defects in  $Fpn1^{ffe/ffe}$  mutants, the size of the forebrain was measured in 9.5 dpc embryos from pregnant dams fed the various diets. Measurements were taken from the most rostral point of the eye vesicle to the most rostral point on the forebrain (Fig. 5A). As previously demonstrated in embryos from dams fed standard mouse chow (Mao et al., 2010), the forebrain was significantly smaller in  $Fpn1^{ffe/ffe}$  mutant embryos compared with wild-type littermates from dams fed the control diet ( $0.44 \pm 0.02$  vs.  $0.28 \pm 0.007$  mm;  $p \leq 0.0005$ ). Interestingly,  $Fpn1^{ffe/ffe}$  mutant embryos without NTDS had normal sized forebrains regardless of diet (data not shown), thus all measurements were done on embryos with NTDS. The high folic acid diet had no significant effect on the reduced forebrain size of  $Fpn1^{ffe/ffe}$  mutants ( $0.44 \pm 0.002$  vs.  $0.26 \pm 0.01$  mm;  $p \leq 0.0005$ ) but iron supplementation alone or dual supplementation restored forebrain size to wild-type levels in mutants with NTDS ( $0.44 \pm 0.02$  vs.  $0.38 \pm 0.03$  mm;  $p > 0.05$ ) and ( $0.44 \pm 0.02$  vs.  $0.32 \pm 0.05$  mm;  $p > 0.05$ ), respectively.

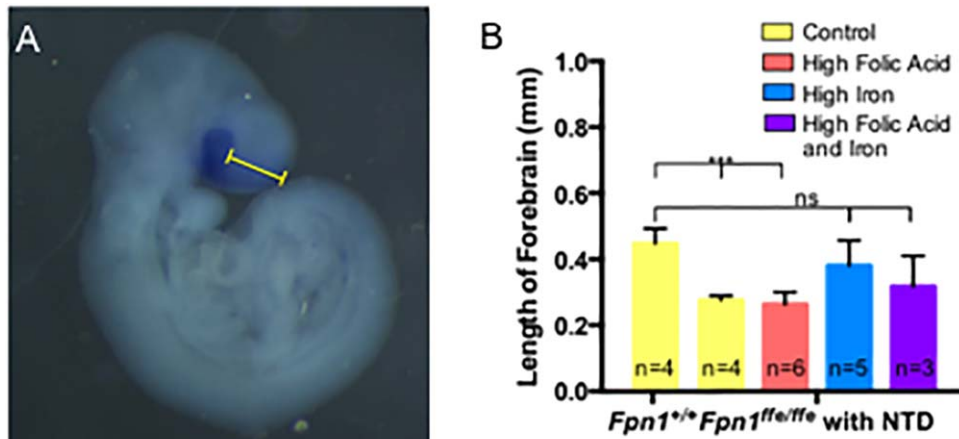
## Discussion

Our previous studies of the  $Fpn1^{ffe}$  mouse line suggested that NTDS and forebrain truncations could be due to

TABLE 1. Mild Macrocytic Anemia Occurs with High Iron Diet

Characteristic	Control		High Folic Acid		High Iron		High Folic Acid and High Iron		2-Factor Anova P Value		
	Wildtype	$Fpn1^{ffe/+}$	Wildtype	$Fpn1^{ffe/+}$	Wildtype	$Fpn1^{ffe/+}$	Wildtype	$Fpn1^{ffe/+}$	Genotype	Diet	Interaction
Red blood cell count, $\times 10^6$ cells/ $\mu$ L	9.43 $\pm$ 0.31	9.54 $\pm$ 0.10	9.55 $\pm$ 0.24	9.93 $\pm$ 0.41	8.90 $\pm$ 0.13	9.01 $\pm$ 0.08	9.21 $\pm$ 0.07	8.97 $\pm$ 0.07	0.58	0.01	0.57
Hemoglobin, g/dL	15.23 $\pm$ 0.37	15.25 $\pm$ 0.03	15.33 $\pm$ 0.45	15.33 $\pm$ 0.40	15.20 $\pm$ 0.50	15.45 $\pm$ 0.09	15.73 $\pm$ 0.27	15.35 $\pm$ 0.03	0.69	0.65	0.55
Hematocrit, %	51.37 $\pm$ 1.38	51.15 $\pm$ 0.03	52.13 $\pm$ 1.24	53.83 $\pm$ 1.34	50.90 $\pm$ 0.92	52.15 $\pm$ 0.61	53.33 $\pm$ 0.38	51.80 $\pm$ 0.12	0.65	0.22	0.31
Mean corpuscular volume, fL	54.47 $\pm$ 0.38	53.65 $\pm$ 0.61	54.57 $\pm$ 0.33	54.27 $\pm$ 0.98	56.27 $\pm$ 1.10	57.90 $\pm$ 0.17	57.93 $\pm$ 0.15	57.75 $\pm$ 0.61	0.85	<0.0001	0.27
Mean corpuscular hemoglobin, pg	16.20 $\pm$ 0.15	16.00 $\pm$ 0.17	16.03 $\pm$ 0.18	15.97 $\pm$ 0.32	17.17 $\pm$ 0.19	17.20 $\pm$ 0.06	17.07 $\pm$ 0.24	17.15 $\pm$ 0.09	0.78	<0.0001	0.88
Red cell distribution width, %	12.73 $\pm$ 0.18	13.65 $\pm$ 0.55	12.87 $\pm$ 0.15	13.17 $\pm$ 0.09	13.23 $\pm$ 0.55	12.20 $\pm$ 0.06	13.03 $\pm$ 0.13	15.30 $\pm$ 0.58	0.03	0.005	0.003

Hematological findings from CBC analyses of whole blood obtained from wild-type (WT) or  $Fpn1^{ffe/+}$  females fed control, high folic acid (10 ppm), high iron (0.5% carbonyl iron), or high folic acid and iron diets for 6 weeks. Each group represents values from 3 samples and significance was determined by to-factor ANOVA.



**FIGURE 5.** Forebrain truncations in *Fpn1*<sup>ff/ff</sup> mutant embryos are rescued by supplementation with a high iron diet. **A:** In situ hybridization to detect *Six3* expression in 9.5 dpc embryos. The forebrain was measured from the rostral point of the optic vesicle (stained by *Six3*) to the most rostral point of the forebrain as indicated by white line. **B:** Forebrain measurements in 9.5 dpc wild-type (*Fpn1*<sup>+/+</sup>) and *Fpn1*<sup>ff/ff</sup> embryos from dams fed control (yellow bar), high folic acid (10 ppm, orange bar), high iron (0.5% carbonyl iron, blue bar), or high folic acid and iron (purple bar) diets for 4 weeks before mating. Statistical significance was determined by the unpaired *t* test. *p*-values:  $\leq 0.0005^{***}$ , or nonsignificant (ns). The number of samples represented in each group is indicated.

either iron deficiency in the embryo or iron overload in the visceral endoderm (Mao et al., 2010). In this study, we supplemented *Fpn1*<sup>ff/ff</sup> pregnancies with a relatively high iron diet and determined the effect on the incidence of NTDs and forebrain truncations. We predicted that iron supplementation would improve iron deficiency but also worsen iron overload in the visceral endoderm. Our data demonstrate that both NTDs and forebrain truncations are prevented by iron supplementation suggesting that these defects are likely due to iron deficiency. However, future experiments to measure iron levels in embryos and the visceral endoderm under these conditions are needed to definitively prove this assumption. Our data also suggest that NTDs in the *Fpn1*<sup>ff/ff</sup> model are folate resistant. While the *Fpn1*<sup>ff/ff</sup> mutant embryos have lower folate levels than wild-type littermates, folic acid supplementation did not prevent NTDs. These findings are not entirely surprising as folate deficiency alone is not sufficient to cause NTDs in the absence of additional factors (Burgoon et al., 2002; Burren et al., 2008, 2010). Thus our data indicate that NTDs in the *Fpn1* mouse line are iron responsive but folate resistant.

#### INTERACTION OF IRON SUPPLEMENTATION AND FOLATE DEFICIENCY

Our data highlight an important interaction between high levels of iron supplementation and folate status. While supplementation with relatively high levels of iron did prevent NTDs in the *Fpn1* mutant mouse line, it had negative effects on folate status in wild-type dams and embryos. Wild-type dams with high levels of iron supplementation showed signs of macrocytic anemia consistent with folate deficiency. This was further supported by improvement of

anemia with the addition of folic acid supplementation. High levels of iron supplementation also resulted in reduced weight of embryo dissected at 11.5 dpc that were restored with dual supplementation. Human data support this negative interaction between high levels of iron supplementation/iron overload and folate status. For example, macrocytic anemia has been reported in individuals with the iron overload disorder hemochromatosis (see Koszewski, 1952; Granville and Dameshek, 1958; Arakawa et al., 1965; Toghiani, 1965; for examples).

In our experiments, we used a relatively high level of iron supplementation to overcome the reduced iron transport activity of the *Fpn1* transporter in the *Fpn1*<sup>ff/ff</sup> model. While these dosages are not likely given to pregnant women, this level of supplementation is within the range of carbonyl iron dosages given in humans with severe anemia. Recommendations for iron supplementation in human populations range from 16 mg iron per day in Canada to 60 mg iron per day by the World Health Organization (Stoltzfus and Dreyfuss, 1998; Cockell et al., 2009). In the United States, the average multivitamin has 18 mg iron and prenatal vitamins contain 30 mg carbonyl iron. However, for severe iron deficiency anemia, dosages of 120 to 360 mg/day carbonyl iron is given (7- to 20-fold increase) and 90 to 150 mg/day (5- to 8.3-fold increase) is typically prescribed during pregnancy.

To compare with guidelines in rodents, the National Research Council recommends 35 mg/kg iron in the average rodent diet and twice this amount during pregnancy (Subcommittee on Laboratory Animal Nutrition, 1995). Thus the addition of 0.5% (500 ppm) carbonyl iron used in this study represents an approximate 15-fold increase



over the recommended supplementation levels for rodents but is well within the range of dosages recommended for patients with severe anemia. Future studies will determine if iron supplementation with equivalent dosages used during human pregnancy would also have a similar effect on folate status of mouse dams and embryos.

Iron and folate share many commonalities (Herbig and Stover, 2002). Simultaneous deficiencies are common especially during pregnancy and result in complications including increased risk of anemia, low birth weight, premature birth, and mortality. Both iron and folate serve as cofactors for enzymatic reactions involved in a variety of metabolic processes including DNA repair and synthesis. Iron supplementation might influence folate status at multiple levels. For example, Ferritin catabolizes folate into inactive metabolites (Suh et al., 2000, 2001). Another molecular link is the regulation of cytoplasmic serine hydroxymethyltransferase levels by iron (Oppenheim et al., 2000, 2001). Thus the high levels of ferritin in the serum of dams supplemented with iron could potentially cause or otherwise contribute to folate deficiency by catabolism of folate.

On the other hand, sites of iron and folate absorption and hemostasis in the mother and fetus overlap significantly and iron overload in these tissues could potentially interfere with folate absorption and/or metabolism. The primary site of both folate and iron absorption from the diet occurs in the enterocytes of the small intestine with common and distinct transporters (Lipinski et al., 2013; Visentin et al., 2014). Once absorbed, iron and folate are delivered to the liver for storage and/or mobilization to the circulation (Gambling et al., 2011; Lipinski et al., 2013; Visentin et al., 2014). Iron overload occurs in both intestinal enterocytes and liver macrophages with mutation of *Fpn1* (Donovan et al., 2005; Zohn et al., 2007). With the relatively high levels of iron given in this study, both sites likely are overloaded with iron potentially interfering with folate absorption and/or metabolism. Similarly, delivery of iron and folate to the embryo during neurulation depends upon the visceral endoderm of the yolk sac (Zohn and Sarkar, 2010) and this tissue also likely becomes overloaded in *Fpn1<sup>ff<sup>e</sup>/ff<sup>e</sup></sup>* mutant embryos with high levels of iron supplementation. This could further reduce transport of folate to the embryo.

#### ROLE OF FPN1 IN TRANSPORT OF OTHER METALS

*Fpn1* also transports other metals and *Fpn1<sup>ff<sup>e</sup>/+</sup>* mice show reduced manganese and zinc levels (Yin et al., 2010; Madejczyk and Ballatori, 2012; Seo et al., 2016). Deficiencies of both of these is implicated in increased NTD risk (Sever and Emanuel, 1973; Cavdar et al., 1980; Soltan and Jenkins, 1982; Buamah et al., 1984; Scott et al., 1990; Velie et al., 1999; Vats et al., 2011; Chandler et al., 2012). However, there is an inverse relationship between iron absorption and absorption of zinc and manganese (Erikson et al., 2002, 2004; Garcia et al., 2007) and iron supplementation

competes with *Fpn1*-mediated transport of these and other metals (Davis et al., 1992; O'Brien et al., 2000; Thompson et al., 2006; Hansen et al., 2009; Zhang et al., 2016). Thus our data that iron supplementation prevents NTDS in this mouse line argue against the possibility that zinc or manganese deficiency are responsible for NTDS in this model. However, additional experiments will be necessary to definitively rule out the involvement of other metals to NTDS in the *Fpn1<sup>ff<sup>e</sup></sup>* model.

#### CONCLUSIONS

It is well established that iron deficiency during pregnancy results in increased risk of complications such as premature birth, reduced birth weight, and intellectual disability (Gambling et al., 2011). Because of the increased iron requirement during pregnancy and the difficulty of replenishing stores under these conditions, it is important that sufficient iron stores are present before conception (Bothwell, 2000). Our results presented here and in our previous studies (Mao et al., 2010; Zohn et al., 2007) make a strong case that sufficient iron stores at conception are also important for successful neural tube closure. This study provides additional support for the possibility that iron deficiency could play a role in NTDS in humans and periconception iron supplementation might prevent some folate resistant NTDS.

#### References

- Acampor D, Avantaggiato V, Tuorto F, et al. 1998. Visceral endoderm-restricted translation of *Otx1* mediates recovery of *Otx2* requirements for specification of anterior neural plate and normal gastrulation. *Development* 125:5091-5104.
- Arakawa T, Ohara K, Kakizaki R, et al. 1965. Folic acid deficiency in hemochromatosis: probably due to a defective storage of folic acid in the liver. *Tohoku J Exp Med* 86:301-306.
- Blom HJ, Shaw GM, den Heijer M, Finnell RH. 2006. Neural tube defects and folate: case far from closed. *Nat Rev* 7:724-731.
- Bothwell TH. 2000. Iron requirements in pregnancy and strategies to meet them. *Am J Clin Nutr* 72:257S-264S.
- Buamah PK, Russell M, Bates G, et al. 1984. Maternal zinc status: a determination of central nervous system malformation. *Br J Obstet Gynaecol* 91:788-790.
- Burgoon JM, Selhub J, Nadeau M, Sadler TW. 2002. Investigation of the effects of folate deficiency on embryonic development through the establishment of a folate deficient mouse model. *Teratology* 65:219-227.
- Burren KA, Savery D, Massa V, et al. 2008. Gene-environment interactions in the causation of neural tube defects: folate deficiency increases susceptibility conferred by loss of *Pax3* function. *Hum Mol Genet* 17:3675-3685.
- Burren KA, Scott JM, Copp AJ, Greene ND. 2010. The genetic background of the curly tail strain confers susceptibility to

- folate-deficiency-induced exencephaly. *Birth Defects Res A Clin Mol Teratol* 88:76-83.
- Carter M, Ulrich S, Oofuji Y, et al. 1999. Crooked tail (Cd) models human folate-responsive neural tube defects. *Hum Mol Genet* 8: 2199-2204.
- Cavdar AO, Arcasoy A, Baycu T, Himmetoglu O. 1980. Zinc deficiency and anencephaly in Turkey. *Teratology* 22:141.
- Chandler AL, Hobbs CA, Mosley BS, et al. 2012. Neural tube defects and maternal intake of micronutrients related to one-carbon metabolism or antioxidant activity. *Birth Defects Res A Clin Mol Teratol* 94:864-874.
- Cockell KA, Miller DC, Lowell H. 2009. Application of the Dietary Reference Intakes in developing a recommendation for pregnancy iron supplements in Canada. *Am J Clin Nutr* 90: 1023-1028.
- Crider KS, Bailey LB, Berry RJ. 2011. Folic acid food fortification: its history, effect, concerns, and future directions. *Nutrients* 3: 370-384.
- Czeizel AE. 2009. Periconceptional folic acid and multivitamin supplementation for the prevention of neural tube defects and other congenital abnormalities. *Birth Defects Res A Clin Mol Teratol* 85:260-268.
- Czeizel AE, Banhidy F. 2011. Vitamin supply in pregnancy for prevention of congenital birth defects. *Curr Opin Clin Nutr Metab Care* 14:291-296.
- Davis CD, Malecki EA, Greger JL. 1992. Interactions among dietary manganese, heme iron, and nonheme iron in women. *Am J Clin Nutr* 56:926-932.
- De Domenico I, McVey Ward D, Kaplan J. 2008. Regulation of iron acquisition and storage: consequences for iron-linked disorders. *Nat Rev Mol Cell Biol* 9:72-81.
- Donovan A, Brownlie A, Zhou Y, et al. 2000. Positional cloning of zebrafish ferroportin1 identifies a conserved vertebrate iron exporter. *Nature* 403:776-781.
- Donovan A, Lima CA, Pinkus JL, et al. 2005. The iron exporter ferroportin/Slc40a1 is essential for iron homeostasis. *Cell Metab* 1:191-200.
- Eichholzer M, Tonz O, Zimmermann R. 2006. Folic acid: a public-health challenge. *Lancet* 367:1352-1361.
- Erikson KM, Shihabi ZK, Aschner JL, Aschner M. 2002. Manganese accumulates in iron-deficient rat brain regions in a heterogeneous fashion and is associated with neurochemical alterations. *Biol Trace Elem Res* 87:143-156.
- Erikson KM, Syversen T, Steinnes E, Aschner M. 2004. Globus pallidus: a target brain region for divalent metal accumulation associated with dietary iron deficiency. *J Nutr Biochem* 15:335-341.
- Felkner MM, Suarez L, Brender J, et al. 2005. Iron status indicators in women with prior neural tube defect-affected pregnancies. *Matern Child Health J* 9:421-428.
- Gambling L, Lang C, McArdle HJ. 2011. Fetal regulation of iron transport during pregnancy. *Am J Clin Nutr* 94:1903S-1907S.
- Garcia SJ, Gellein K, Syversen T, Aschner M. 2007. Iron deficient and manganese supplemented diets alter metals and transporters in the developing rat brain. *Toxicol Sci* 95:205-214.
- Granville N, Dameshek W. 1958. Hemochromatosis with megaloblastic anemia responding to folic acid; report of a case. *N Engl J Med* 258:586-589.
- Gray JD, Ross ME. 2009. Mechanistic insights into folate supplementation from Crooked tail and other NTD-prone mutant mice. *Birth Defects Res A Clin Mol Teratol* 85:314-321.
- Groenen PM, van Rooij IA, Peer PG, et al. 2004. Low maternal dietary intakes of iron, magnesium, and niacin are associated with spina bifida in the offspring. *J Nutr* 134:1516-1522.
- Hansen SL, Trakooljul N, Liu HC, et al. 2009. Iron transporters are differentially regulated by dietary iron, and modifications are associated with changes in manganese metabolism in young pigs. *J Nutr* 139:1474-1479.
- Harris MJ. 2009. Insights into prevention of human neural tube defects by folic acid arising from consideration of mouse mutants. *Birth Defects Res A Clin Mol Teratol* 85:331-339.
- Herbig AK, Stover PJ. 2002. Regulation of folate metabolism by iron. In: Massaro EJ, Rogers JM, editors. *Folate and human development*. Totowa, NJ: Humana Press. pp. 241-262.
- Horne DW, Patterson D. 1988. Lactobacillus casei microbiological assay of folic acid derivatives in 96-well microtiter plates. *Clin Chem* 34:2357-2359.
- Kappen C. 2013. Modeling anterior development in mice: diet as modulator of risk for neural tube defects. *Am J Med Genet* 163C: 333-356.
- Kimura C, Yoshinaga K, Tian E, et al. 2000. Visceral endoderm mediates forebrain development by suppressing posteriorizing signals. *Dev Biol* 225:304-321.
- Kozewski BJ. 1952. The occurrence of megaloblastic erythropoiesis in patients with hemochromatosis. *Blood* 7:1182-1195.
- Kur E, Mecklenburg N, Cabrera RM, et al. 2014. LRP2 mediates folate uptake in the developing neural tube. *J Cell Sci* 127:2261-2268.
- Li Z, Ren A, Zhang L, et al. 2006. Extremely high prevalence of neural tube defects in a 4-county area in Shanxi Province, China. *Birth Defects Res A Clin Mol Teratol* 76:237-240.
- Lipinski P, Stys A, Starzynski RR. 2013. Molecular insights into the regulation of iron metabolism during the prenatal and early postnatal periods. *Cell Mol Life Sci* 70:23-38.

- Liu J, Zhang L, Li Z, et al. 2016. Prevalence and trend of neural tube defects in five counties in Shanxi province of Northern China, 2000 to 2014. *Birth Defects Res A Clin Mol Teratol* 106:267–274.
- Lopez A, Cacoub P, Macdougall IC, Peyrin-Biroulet L. 2016. Iron deficiency anaemia. *Lancet* 387:907–916.
- Madejczyk MS, Ballatori N. 2012. The iron transporter ferroportin can also function as a manganese exporter. *Biochim Biophys Acta* 1818:651–657.
- Mao J, McKean DM, Warriar S, et al. 2010. The iron exporter ferroportin 1 is essential for development of the mouse embryo, forebrain patterning and neural tube closure. *Development* 137:3079–3088.
- Marean A, Graf A, Zhang Y, Niswander L. 2011. Folic acid supplementation can adversely affect murine neural tube closure and embryonic survival. *Hum Mol Genet* 20:3678–3683.
- Molloy AM, Einri CN, Jain D, et al. 2014. Is low iron status a risk factor for neural tube defects? *Birth Defects Res A Clin Mol Teratol* 100:100–106.
- Molloy AM, Scott JM. 1997. Microbiological assay for serum, plasma, and red cell folate using cryopreserved, microtiter plate method. *Methods Enzymol* 281:43–53.
- O'Brien KO, Zavaleta N, Caulfield LE, et al. 2000. Prenatal iron supplements impair zinc absorption in pregnant Peruvian women. *J Nutr* 130:2251–2255.
- Obican SG, Finnell RH, Mills JL, et al. 2010. Folic acid in early pregnancy: a public health success story. *FASEB J* 24:4167–4174.
- Oppenheim EW, Adelman C, Liu X, Stover PJ. 2001. Heavy chain ferritin enhances serine hydroxymethyltransferase expression and de novo thymidine biosynthesis. *J Biol Chem* 276:19855–19861.
- Oppenheim EW, Nasrallah IM, Mastri MG, Stover PJ. 2000. Mimosine is a cell-specific antagonist of folate metabolism. *J Biol Chem* 275:19268–19274.
- Parker SE, Mai CT, Canfield MA, et al. 2010. Updated National Birth Prevalence estimates for selected birth defects in the United States, 2004–2006. *Birth Defects Res A Clin Mol Teratol* 88:1008–1016.
- Rodriguez TA, Casey ES, Harland RM, et al. 2001. Distinct enhancer elements control Hex expression during gastrulation and early organogenesis. *Dev Biol* 234:304–316.
- Scott JM, Kirke PN, Weir DG. 1990. The role of nutrition in neural tube defects. *Ann Rev Nutr* 10:277–295.
- Seo YA, Elkhader JA, Wessling-Resnick M. 2016. Distribution of manganese and other biometals in flatiron mice. *Biometals* 29:147–155.
- Sever LE, Emanuel I. 1973. Is there a connection between maternal zinc deficiency and congenital malformations of the central nervous system in man? *Teratology* 7:117.
- Smithells RW, Sheppard S, Schorah CJ. 1976. Vitamin deficiencies and neural tube defects. *Arch Dis Child* 51:944–950.
- Soltan MH, Jenkins DM. 1982. Maternal and fetal plasma zinc concentration and fetal abnormality. *Br J Obstet Gynaecol* 89:56–58.
- Srinivas S. 2006. The anterior visceral endoderm-turning heads. *Genesis* 44:565–572.
- Srinivas S, Rodriguez T, Clements M, et al. 2004. Active cell migration drives the unilateral movements of the anterior visceral endoderm. *Development* 131:1157–1164.
- Stoltzfus RJ, Dreyfuss ML. 1998. Guidelines for the use of iron supplements to prevent and treat iron deficiency anemia. Washington, DC: ILSI Press.
- Stower MJ, Srinivas S. 2014. Heading forwards: anterior visceral endoderm migration in patterning the mouse embryo. *Philos Trans R Soc Lond B Biol Sci* 369:pii: 20130546.
- Subcommittee on Laboratory Animal Nutrition. 1995. Nutrient requirements of laboratory animals. Washington, DC: National Academy Press.
- Suh JR, Herbig AK, Stover PJ. 2001. New perspectives on folate catabolism. *Ann Rev Nutr* 21:255–282.
- Suh JR, Oppenheim EW, Girgis S, Stover PJ. 2000. Purification and properties of a folate-catabolizing enzyme. *J Biol Chem* 275:35646–35655.
- Thomas P, Beddington R. 1996. Anterior primitive endoderm may be responsible for patterning the anterior neural plate in the mouse embryo. *Curr Biol* 6:1487–1496.
- Thompson K, Molina R, Donaghey T, et al. 2006. The influence of high iron diet on rat lung manganese absorption. *Toxicol Appl Pharmacol* 210:17–23.
- Toghill PJ. 1965. Megaloblastic anaemia in haemochromatosis. *Postgrad Med J* 41:86–88.
- Vats R, Sharma RK, Sharma A. 2011. Copper and manganese concentration in neural tube defects. *Our Nature* 9:173–175.
- Velie EM, Block G, Shaw GM, et al. 1999. Maternal supplemental and dietary zinc intake and the occurrence of neural tube defects in California. *Am J Epidemiol* 150:605–616.
- Visentin M, Diop-Bove N, Zhao R, Goldman ID. 2014. The intestinal absorption of folates. *Ann Rev Physiol* 76:251–274.
- Weekes EW, Tamura T, Davis RO, et al. 1992. Nutrient levels in amniotic fluid from women with normal and neural tube defect pregnancies. *Biol Neonate* 61:226–231.
- Yin Z, Jiang H, Lee ES, et al. 2010. Ferroportin is a manganese-responsive protein that decreases manganese cytotoxicity and accumulation. *J Neurochem* 112:1190–1198.
- Zhang H, Gilbert ER, Pan S, et al. 2016. Dietary iron concentration influences serum concentrations of manganese in rats

---

consuming organic or inorganic sources of manganese. *Br J Nutr* 115:585–593.

Zohn IE. 2012. Mouse as a model for multifactorial inheritance of neural tube defects. *Birth Defects Res C Embryo Today* 96: 193–205.

Zohn IE. 2014. *Neural tube defects. Principles of developmental genetics*. 2nd ed. Washington, DC: Children's Research Institute.

Zohn IE, De Domenico I, Pollock A, et al. 2007. The flatiron mutation in mouse ferroportin acts as a dominant negative to cause ferroportin disease. *Blood* 109:4174–4180.

Zohn IE, Sarkar AA. 2008. Modeling neural tube defects in the mouse. *Curr Top Dev Biol* 84:1–35.

Zohn IE, Sarkar AA. 2010. The visceral yolk sac endoderm provides for absorption of nutrients to the embryo during neurulation. *Birth Defects Res A Clin Mol Teratol* 88:593–600.