

7-2015

Predicting Risk of End-Stage Liver Disease in Antiretroviral-Treated HIV/Hepatitis C Virus-Coinfected Patients

Vincent Lo Re III

Michael J. Kallan

Janet P. Tate

Joseph K. Lim

Matthew Bidwell Goetz

See next page for additional authors

Follow this and additional works at: http://hsrc.himmelfarb.gwu.edu/smhs_medicine_facpubs



Part of the [Medicine and Health Sciences Commons](#)

Recommended Citation

Lo Re, V., Kallan, M. J., Tate, J. P., Lim, J. K., Goetz, M. B., Klein, M. B., ... Localio, A. R. (2015). Predicting Risk of End-Stage Liver Disease in Antiretroviral-Treated Human Immunodeficiency Virus/Hepatitis C Virus-Coinfected Patients. *Open Forum Infectious Diseases*, 2(3), ofv109. doi:10.1093/ofid/ofv109

This Journal Article is brought to you for free and open access by the Medicine at Health Sciences Research Commons. It has been accepted for inclusion in Medicine Faculty Publications by an authorized administrator of Health Sciences Research Commons. For more information, please contact hsrc@gwu.edu.

Authors

Vincent Lo Re III, Michael J. Kallan, Janet P. Tate, Joseph K. Lim, Matthew Bidwell Goetz, Cynthia L. Gibert, and +10 additional authors

Predicting Risk of End-Stage Liver Disease in Antiretroviral-Treated HIV/Hepatitis C Virus-Coinfected Patients

Vincent Lo Re III^{1,2,3}, Michael J. Kallan², Janet P. Tate^{4,5}, Joseph K. Lim^{4,5}, Matthew Bidwell Goetz⁶, Marina B. Klein⁷, David Rimland⁸, Maria C. Rodriguez-Barradas⁹, Adeel A. Butt¹⁰, Cynthia L. Gibert¹¹, Sheldon T. Brown¹², Lesley S. Park^{5,13}, Robert Dubrow^{5,13}, K. Rajender Reddy¹, Jay R. Kostman¹, Amy C. Justice^{4,5}, A. Russell Localio²

¹Department of Medicine, Perelman School of Medicine, University of Pennsylvania, Philadelphia, PA

²Department of Biostatistics and Epidemiology and Center for Clinical Epidemiology and Biostatistics, Perelman School of Medicine, University of Pennsylvania, Philadelphia, PA

³Medical Service, Philadelphia VA Medical Center, Philadelphia, PA

⁴VA Connecticut Healthcare System, West Haven, CT

⁵Yale University School of Medicine, New Haven, CT

⁶VA Greater Los Angeles Healthcare System and David Geffen School of Medicine at UCLA, Los Angeles, CA

⁷Chronic Viral Illness Service, McGill University Health Centre, Montreal, Canada

⁸Atlanta VA Medical Center and Emory University School of Medicine, Atlanta, GA

⁹Infectious Diseases Section, Michael E. DeBakey VA Medical Center and Department of Medicine, Baylor College of Medicine, Houston, TX

© The Author 2015. Published by Oxford University Press on behalf of the Infectious Diseases Society of America.

This is an Open Access article distributed under the terms of the Creative Commons Attribution-NonCommercial-NoDerivs licence (<http://creativecommons.org/licenses/by-nc-nd/4.0/>), which permits non-commercial reproduction and distribution of the work, in any medium, provided the original work is not altered or transformed in any way, and that the work is properly cited. For commercial re-use, please contact journals.permissions@oup.com.

¹⁰VA Pittsburgh Healthcare System, Pittsburgh, PA and Hamad Healthcare Quality Institute and Hamad Medical Corporation, Doha, Qatar

¹¹Washington DC VA Medical Center and George Washington University Medical Center, Washington, DC

¹²James J. Peters VA Medical Center and Mt. Sinai School of Medicine, New York, NY

¹³Yale School of Public Health, New Haven, CT

Address Correspondence to: V. Lo Re III, M.D., M.S.C.E. Center for Clinical Epidemiology and Biostatistics, University of Pennsylvania School of Medicine, 836 Blockley Hall, 423 Guardian Drive, Philadelphia, PA 19104-6021, E-mail: vincentl@mail.med.upenn.edu, Tel: 215-573-5964, Fax: 215-349-5111

Alternative Contact: Janet P. Tate, ScD, VA Connecticut Health Systems, 950 Campbell Avenue, West Haven, CT 06516, E-mail: Janet.Tate2@va.gov, Tel: 203-9332-5711 extension 5371

ABSTRACT

Background: End-stage liver disease (ESLD) is an important cause of morbidity among HIV/hepatitis C virus (HCV)-coinfected patients. Quantifying the risk of this outcome over time could help determine which coinfecting patients should be targeted for risk factor modification and HCV treatment. We evaluated demographic, clinical, and laboratory variables to predict risk of ESLD in HIV/HCV-coinfecting patients receiving antiretroviral therapy (ART).

Methods: We conducted a retrospective cohort study among 6,016 HIV/HCV-coinfecting patients who received ART within the Veterans Health Administration between 1997 and 2010. The main outcome was incident ESLD, defined by hepatic decompensation, hepatocellular carcinoma, or liver-related death. Cox regression was used to develop prognostic models based on baseline demographic, clinical, and laboratory variables, including FIB-4 and aspartate aminotransferase-to-platelet ratio index, previously validated markers of hepatic fibrosis. Model performance was assessed by discrimination and decision curve analysis.

Results: Among 6,016 HIV/HCV patients, 532 (8.8%) developed ESLD over a median of 6.6 years. A model comprising FIB-4 and race had modest discrimination for ESLD (c-statistic, 0.73) and higher net benefit than alternative strategies of treating no or all coinfecting patients at relevant risk thresholds. For FIB-4 >3.25, ESLD risk ranged from 7.9% at 1 year to 26.0% at 5 years among non-blacks and from 2.4% at 1 year to 14.0% at 5 years among blacks.

Conclusions: Race and FIB-4 provided important predictive information on ESLD risk among HIV/HCV patients. Estimating risk of ESLD using these variables could help direct HCV treatment decisions among HIV/HCV-coinfected patients.

INTRODUCTION

Chronic hepatitis C virus (HCV) coinfection is common among patients with HIV infection [1]. Liver fibrosis progression is accelerated in HIV/HCV-coinfected patients [2], and rates of hepatic decompensation are higher among coinfecting than HCV-monoinfected patients, even if HIV RNA is fully suppressed on antiretroviral therapy (ART) [3]. Consequently, end-stage liver disease (ESLD) has emerged as an important cause of morbidity in this population [3-5].

Despite the clinical impact of HCV-related ESLD in coinfecting patients, no models have been developed using readily available demographic, clinical, and laboratory characteristics to predict the risk of ESLD within a specified time period. Quantifying ESLD risk over time could prompt clinicians and patients to aggressively address modifiable risk factors for this condition (e.g., hazardous alcohol use; uncontrolled diabetes; severe anemia; detectable HIV viremia due to ART non-adherence and/or resistance [3]) and identify subgroups of patients who should be followed closely for liver complications. Since highly efficacious and well tolerated, but costly, all-oral direct-acting antivirals for HCV treatment are now available [6, 7], a prognostic model for ESLD in coinfecting patients could help prioritize the need for HCV therapy among HIV/HCV patients, who have an urgent need for HCV treatment [3].

We previously identified important risk factors for hepatic decompensation among HIV/HCV patients on ART [3]. In this study, we evaluated and compared alternative models

comprised of demographic, clinical, and laboratory variables to determine which combination of predictors can best classify HIV/HCV patients according to their risk of progression to ESLD over time. Since liver fibrosis stage is an important factor used to determine the urgency and timing of HCV therapy [8], we first evaluated the prognostic ability of two non-invasive markers of hepatic fibrosis (FIB-4; aspartate aminotransferase-to-platelet ratio index [APRI]) that can be calculated from routinely measured laboratory data (i.e., liver aminotransferases, platelet count). We then evaluated whether the addition of clinical and demographic variables improved the predictive ability of these indices.

METHODS

Study Design and Data Source

We conducted a retrospective cohort study among ART-treated HIV/HCV-coinfected patients in the Veterans Aging Cohort Study (VACS) between January 1, 1997 and September 30, 2010 [9]. VACS consists of electronic medical record data from HIV-infected patients receiving care at Veterans Affairs (VA) medical facilities across the United States. Data include demographic characteristics, hospital and outpatient diagnoses (recorded using International Classification of Diseases, Ninth Revision [ICD-9] codes), procedures, laboratory results, and dispensed medications. Clinically confirmed cancer diagnoses are identified using the VA Central Cancer Registry. Date of death was ascertained from the VA Vital Status file [10]. The underlying cause of death was determined by linkage with the National Death Index (NDI).[11] This study was approved by the Institutional Review Boards of the University of Pennsylvania and Philadelphia VA Medical Center.

Study Patients

Coinfected patients were included if they had: 1) HIV (identified using a validated algorithm [9]), 2) detectable HCV RNA, and 3) were dispensed ART, defined as use of at least three antiretrovirals from two different classes [12] for at least 12 months. We included only coinfecting patients on ART because current guidelines recommend ART in all HIV/HCV patients regardless of CD4 count [12]. The majority of Veterans receive their medications from VA pharmacies [13, 14], and prior studies have shown the validity of VA dispensing data as a surrogate of actual adherence [15-18]. Patients were excluded if prior to start of follow-up (defined below) they had ESLD or received interferon-based therapy (since such treatment can affect non-invasive markers of hepatic fibrosis and reduces risk of ESLD [19]).

Follow-up began after 12 months on ART. The 12 months prior to the start of follow-up represented the baseline period, during which predictors were ascertained. Follow-up continued until study endpoint, death, initiation of HCV therapy, or last visit before September 30, 2010.

Main Study Outcome

The primary endpoint was ESLD, defined as hepatic decompensation, hepatocellular carcinoma, or liver-related death. Hepatic decompensation was determined by one hospital discharge ICD-9 diagnosis or two or more outpatient ICD-9 diagnoses of ascites, spontaneous bacterial peritonitis, or esophageal variceal hemorrhage (**Appendix 1**). The requirement of two outpatient diagnoses aimed to exclude events that were suspected, but not subsequently confirmed, at follow-up visits. We validated this definition in a prior survey, with 91% of events confirmed by medical records [20]. Based on the results of the prior validation study [20], we did not include ICD-9 diagnoses for hepatic encephalopathy or jaundice, which could indicate

decompensation, since these diagnoses were often linked to unrelated conditions (e.g., narcotic overuse, stroke recorded as encephalopathy; biliary obstruction, atazanavir-associated hyperbilirubinemia recorded as jaundice). The date of decompensation was defined as the hospital discharge date (if identified by hospital diagnosis) or initial outpatient diagnosis date (if identified by outpatient diagnoses). Hepatocellular carcinoma was determined using the VA Central Cancer Registry, which confirms diagnoses by histology, cytology, or consistent radiography. Deaths were considered liver-related if the underlying cause of death in the NDI was hepatic decompensation, liver cancer, alcoholic liver disease, viral hepatitis, or non-alcoholic liver disease [3]. The date of ESLD was defined as the initial date of hepatic decompensation, hepatocellular carcinoma, or death from liver disease, whichever occurred first.

Data Collection

Baseline variables evaluated as predictors of ESLD included: FIB-4 (<1.45; 1.45-3.25; >3.25), APRI (<1.0; 1.0-2.0; >2.0), age, body mass index (BMI; <18.5; 18.5-24.9; 25.0-30.0; >30.0 kg/m²), severe anemia (hemoglobin <10 g/dL), CD4 cell count <200 cells/mm³, HIV RNA >400 copies/mL, alcohol dependence/abuse, diabetes mellitus, hepatitis B coinfection, and non-black race, which have been shown to be risk factors for advanced liver disease in coinfecting patients [3, 19, 21]. FIB-4 is a measure of liver fibrosis stage that was developed and validated compared to liver biopsy in HIV/HCV-coinfecting patients [22]. It is calculated from age, alanine aminotransferase (ALT), aspartate aminotransferase (AST), and platelet count: $FIB-4 = (\text{age} [\text{years}] \times \text{AST} [\text{U/L}]) / ((\text{platelet count} [10^9/\text{L}]) \times (\text{ALT} [\text{U/L}])^{1/2})$. FIB-4 <1.45 identifies no/minimal fibrosis, while results >3.25 indicate advanced hepatic fibrosis/cirrhosis.[22] APRI, another noninvasive measure of hepatic fibrosis, uses AST and platelet count: $APRI = ([AST$

[U/L]/upper limit of normal [considered as 40 U/L])/platelet count ($10^9/L$) x 100.[23] APRI >2.0 identifies cirrhosis in chronic HCV, and APRI <0.5 identifies no or minimal fibrosis [23]. We collected ALT, AST, platelet count, body weight, hemoglobin, CD4 count, and HIV RNA results measured closest to, but prior to, the start of follow-up. Alcohol dependence/abuse was defined by previously validated ICD-9 diagnoses (**Appendix 1**) [24]. Diabetes was defined by random glucose ≥ 200 mg/dL, ICD-9 diagnosis, and/or anti-diabetic medication use [25]. Hepatitis B coinfection was defined by a positive hepatitis B surface antigen. Additional variables collected at baseline for descriptive purposes included sex, HCV genotype, and HCV RNA.

Statistical Analysis

We used Cox regression to estimate the relative hazards of ESLD (with 95% confidence intervals) for the predictors of interest [26]. We also evaluated FIB-4, APRI, hemoglobin, CD4 count, and HIV RNA level as continuous variables.

Next, since the stage of hepatic fibrosis is a strong determinant of ESLD [3, 19] and an important factor in the decision to initiate HCV therapy [8], we initially created separate models comprising FIB-4 and APRI alone. We then developed two separate lines of prognostic models with FIB-4 and APRI as the base models, respectively. Various combinations of the other predictors were added to the base models, including an interaction term for race. Age is a component of FIB-4 and so was not included in FIB-4 models.

Each model's performance was assessed by statistical significance and discrimination, using the concordance statistic (c-statistic) as an index of the model's ability to separate persons who will develop ESLD from those who will not [27]. We favored simpler models with fewer

predictors that had appreciably different c-statistics from those of FIB-4 or APRI-based models alone. Performance of promising models was further compared by decision curves [28, 29], a graphical approach for evaluating and comparing prognostic models that considers the inherent trade-offs of false-positive versus false-negative classifications arising out of varying risk thresholds. Details appear in **Appendix 2**. From the final model selected, we plotted Kaplan-Meier failure curves. Differences in ESLD by FIB-4 categories were estimated using log-rank tests.

To ensure that missing data did not affect the validity of our results, in a sensitivity analysis, we generated 10 imputed datasets, each with completed data on all predictors [30]. Data were analyzed using SAS 9.4 (SAS Institute Inc., Cary, NC) and Stata 13.1 (Stata Corporation, College Station, TX).

RESULTS

Patient Characteristics

Between 1997 and 2010, a total of 6,016 ART-treated HIV/HCV-coinfected patients met our inclusion criteria (**Figure 1**). Absence of HCV RNA assessment was a common reason for exclusion (18%), but there were no clinically relevant differences in the characteristics between included patients and those excluded due to missing HCV RNA (data not shown).

The cohort (**Table 1**) was predominantly male and black, and one-quarter had a history of alcohol dependence/abuse. Most patients were infected with HCV genotype 1 and had a high baseline HCV RNA level. The patients were followed for a median of 6.6 (interquartile range, 3.4-9.8) years. During follow-up, 482 (8.0%) patients initiated HCV therapy during follow-up and were censored.

ESLD occurred in 532 (8.8%) patients during follow-up. At the time of the first ESLD

event, a diagnosis indicative of hepatic decompensation was recorded in 397 (6.6%), hepatocellular carcinoma in 63 (1.0%), and liver-related death in 72 (1.2%). Among the 397 patients with an incident hepatic decompensation event, 335 (84.4%) had ascites, 71 (17.9%) spontaneous bacterial peritonitis, and 110 (27.7%) variceal hemorrhage. Overall, 1,936 (32.2%) patients died during follow-up, of which 164 (8.5%) were liver-related deaths (**Appendix 3**).

Performance and Comparison of Prognostic Models for ESLD

Baseline FIB-4, baseline APRI, and non-black race were the strongest factors associated with ESLD among the variables evaluated in Cox regression analyses (**Appendix 4**). Interactions with race were not observed for FIB-4 or APRI. Discrimination was similar for models with FIB-4 (c-statistic, 0.70) and APRI (c-statistic, 0.71) alone (**Table 2**). Alternative models comprising FIB-4 and race (c-statistic, 0.73) and APRI, age, and race (c-statistic, 0.74) had higher discrimination, but further addition of other combinations of predictors did not result in appreciably increased model discrimination (**Table 2**). Results of the decision curve analysis are shown in **Appendix 5**. Since the model with FIB-4 + race had comparable discriminative ability and was simpler than the one with APRI + age + race, the model with FIB-4 + race was selected as the final model.

The risk of ESLD among non-blacks and blacks by category of FIB-4 is shown in Panels A and B of **Figure 3**, respectively (log-rank test among non-blacks, $p < 0.001$; among blacks, $p < 0.001$). The risk at 5 years ranged from 2.6% to 26% among non-blacks (**Figure 3a**) and 2.0% to 14.0% among blacks (**Figure 3b**) across FIB-4 levels.

Analyses using imputed data produced similar results.

DISCUSSION

This study evaluated prognostic models for determining the risk of developing ESLD in ART-treated HIV/HCV-coinfected patients. A prognostic model for risk of developing ESLD comprising FIB-4 and race had better discriminative accuracy than FIB-4 or APRI alone, and was comparable to the APRI, age, and race model, but simpler. Using established cut-points of FIB-4, we determined the risk of ESLD over time in non-blacks and blacks. Despite including a number of additional variables associated with progression to ESLD (**Appendix 3**), a model with all candidate predictors did not appreciably increase prognostic ability.

Importantly, our analyses in **Figure 2** demonstrated that for HIV/HCV-coinfected individuals with moderate fibrosis by FIB-4 (i.e., results ranging from 1.45-3.25), there remains a significant risk of ESLD for non-blacks (>16% at 10 years) and blacks (>10% at 10 years). These results provide additional evidence that coinfecting patients with at least moderate (F2) or higher liver fibrosis be strongly considered for HCV treatment and should not be deferred until the development of more advanced liver disease, where the risk of ESLD will be even higher.

With the availability of all-oral direct-acting anti-HCV regimens that have high virologic cure rates and tolerability, but which are very costly, determining the rational use of these agents is imperative [31]. Quantifying the absolute risk of ESLD over time using a simple prognostic model comprising FIB-4 and race could have important clinical implications for the management of coinfecting patients. Identifying coinfecting patients at higher risk of ESLD could help prioritize HCV treatment in those who would benefit from it most and inform the need for close monitoring for liver-related complications. Alternatively, in those with a low risk of ESLD, emphasis could be placed on the modification of other risk factors for ESLD, including the reduction of alcohol consumption, control of diabetes, and HIV suppression, as well as clinical

monitoring for liver disease progression. Analogous to other quantitative risk assessment tools, such as the Framingham Coronary Heart Disease Risk Score [32] and World Health Organization Fracture Risk Assessment Tool (FRAX) [33], which estimate the 10-year risk of cardiovascular disease and fracture, respectively, use of this ESLD risk model could aid the management of chronic HCV in patients with HIV, more than simply knowing which factors are predictive of developing ESLD.

If validated, this model could contribute to an individualized approach to HCV treatment among HIV/HCV patients. We sought to develop a simple model that reports ESLD risk over a 10-year period in both graphical and tabular form to allow easy interpretation by coinfecting patients and their providers. Since the exact risk of ESLD that should prompt initiation of HCV treatment remains unclear, providers could use these results to discuss a patient's likelihood of developing ESLD over time and consider what risk of ESLD, in conjunction with other clinical and demographic factors, would prompt their initiation of HCV therapy.

FIB-4 is clinically credible as a predictor, easy to compute, and could be used in clinical practice in developed and developing world settings. Prior studies in coinfecting patients have demonstrated that the baseline stage of hepatic fibrosis is strongly associated with ESLD [3, 19]. A separate analysis among coinfecting women showed that FIB-4 was associated with all-cause mortality [34]. Among HIV-infected patients, baseline FIB-4 is associated with hepatocellular carcinoma risk [35]. In addition, FIB-4 uses a limited set of variables that are routinely and inexpensively measured in the outpatient setting, making this a useful option for resource-limited settings and practices where other non-invasive modalities of liver fibrosis assessment (e.g., transient elastography) might not be available.

Race is also credible as a predictor of ESLD. Recent studies in coinfecting patients reveal

that persons of non-black race have a higher risk of hepatic decompensation [3] and liver-related death [36]. A recent cohort study among 149,407 chronic HCV patients showed that blacks had lower rates of cirrhosis and hepatocellular carcinoma than non-Hispanic whites, even after adjustment for HCV genotype, HCV treatment, diabetes, and BMI [37]. Non-black HCV-infected patients have been reported to have stronger HCV-specific immunity than blacks [38], which could result in increased immune-mediated hepatic inflammation and accelerated liver fibrosis progression. Recent analyses in HCV-monoinfected and HIV/HCV-coinfected patients suggest that interleukin-28B CC genotype, which is common in non-blacks, is associated with increased hepatic inflammation and worse hepatic outcomes than those with CT or TT genotypes [39, 40]. Differences in the distribution of other genetic and non-genetic factors may also explain the disparity in ESLD risk between blacks and non-blacks. In future analyses, such factors may prove to be better indicators of ESLD risk than race.

This study has several potential limitations. First, we might have missed hepatic decompensation events and underestimated ESLD risk, since our decompensation definition did not include hepatic encephalopathy and because some patients did not have a confirmed cause of death. However, the incidence of ESLD among HIV/HCV patients in this study (8.8%) was similar to that reported in other cohort studies of coinfecting patients [5, 19]. Further, we previously evaluated the incidence rate of decompensation within VACS, U.S. Medicare, and U.S. Medicaid data using the validated ICD-9 definition (to capture outcomes occurring at non-VA hospitals that did not result in transfer to a VA facility). The incidence rate of decompensated cirrhosis was almost identical to that within the VACS alone, suggesting that few ESLD events were missed [3]. Second, our sample included mostly male U.S. veterans, and results may not be generalizable to women or to non-veteran populations. Future analyses should

evaluate the ability of FIB-4 and race to predict ESLD among coinfecting women and non-veterans. Third, differences by race in receiving HCV treatment (and being censored) should not affect our results because we stratified our analysis by race. Fourth, external validation of the prognostic model to predict ESLD in other coinfecting populations is essential to ensure reproducibility of our findings across varied settings. Finally, although we considered many potential predictors during model development, data on liver stiffness measurement (using transient elastography) and genetic markers, such as interleukin 28B genotype and interferon lambda-4 deltaG genotype [40, 41], were not assessed. Future models evaluating ESLD risk in coinfecting patients could determine whether these factors improve accuracy and utility. However, FIB-4 and race have the advantage of being simple predictors. Further, since our final model included two categorical predictors, a simple Kaplan-Meier plot allows users to estimate risk easily for any given time frame.

In summary, FIB-4 and race can be used to quantify the risk of ESLD among HIV/HCV-coinfecting patients on ART. Such information could prompt coinfecting patients to reduce their risk factors for liver disease progression and aid HCV treatment decisions for both clinicians and patients. Future studies should evaluate the classification performance of FIB-4 and race in other coinfecting populations, compare the performance of FIB-4 using the established cut-off points versus alternative thresholds, and determine if its use improves outcomes.

NOTES

Acknowledgements. We are grateful to the VA Central Cancer Registry for permitting us to link the Veterans Aging Cohort Study data with the VA Central Cancer Registry data and for providing us with a dataset containing the linked records.

These results were presented at the Conference on Retroviruses and Opportunistic Infections (CROI) 2014, Boston, Massachusetts, 3-6 March 2014.

Financial Support. This study was supported by research grant funding from the National Institute of Allergy and Infectious Diseases (K01 AI070001 [Dr. Lo Re]), National Institute on Alcohol Abuse and Alcoholism (U01 AA13566 [Dr. Justice]), and National Cancer Institute (F31 CA180775 [Ms. Park]).

Disclaimer. The contents of this article do not represent the views of the Department of Veterans Affairs, the U.S. Food and Drug Administration, or the United States Government.

Potential Conflicts of Interest. Dr. Lim has received research grant support (to Yale University) from Abbott, Boehringer-Ingelheim, Bristol-Myers Squibb, Genentech, Gilead, Glaxo-Smith Kline, Globeimmune, Janssen, Vertex and has served as a consultant to Boehringer-Ingelheim, Bristol-Myers Squibb, Gilead, Merck, and Vertex. Dr. Klein has received research grant support from the Fonds de la Recherche en Santé du Québec; has served as a consultant to Glaxo-SmithKline and Viv; has received honoraria for lectures from Bristol-Myers Squibb; and has received honoraria for the development of educational materials from Gilead. Dr. Lo Re has received investigator-initiated research grant support (to the University of Pennsylvania) from AstraZeneca and Gilead Sciences. All other authors declare that they have no conflicts of interest.

REFERENCES

1. Sherman KE, Rouster SD, Chung RT, Rajicic N: **Hepatitis C virus prevalence among patients infected with human immunodeficiency virus: a cross-sectional analysis of the US adult AIDS Clinical Trials Group.** *Clin Infect Dis* 2002, **34**(6):831-837.
2. Macias J, Berenguer J, Japon MA, Giron JA, Rivero A, Lopez-Cortes LF, Moreno A, Gonzalez-Serrano M, Iribarren JA, Ortega E *et al*: **Fast fibrosis progression between repeated liver biopsies in patients coinfecting with human immunodeficiency virus/hepatitis C virus.** *Hepatology* 2009, **50**(4):1056-1063.
3. Lo Re V, 3rd, Kallan MJ, Tate JP, Localio AR, Lim JK, Goetz MB, Klein MB, Rimland D, Rodriguez-Barradas MC, Butt AA *et al*: **Hepatic decompensation in antiretroviral-treated patients co-infected with HIV and hepatitis C virus compared with hepatitis C virus-monoinfected patients: a cohort study.** *Ann Intern Med* 2014, **160**(6):369-379.
4. Weber R, Sabin CA, Friis-Moller N, Reiss P, El-Sadr WM, Kirk O, Dabis F, Law MG, Pradier C, De Wit S *et al*: **Liver-related deaths in persons infected with the human immunodeficiency virus: the D:A:D study.** *Arch Intern Med* 2006, **166**(15):1632-1641.
5. Pineda JA, Garcia-Garcia JA, Aguilar-Guisado M, Rios-Villegas MJ, Ruiz-Morales J, Rivero A, del Valle J, Luque R, Rodriguez-Bano J, Gonzalez-Serrano M *et al*: **Clinical progression of hepatitis C virus-related chronic liver disease in human immunodeficiency virus-infected patients undergoing highly active antiretroviral therapy.** *Hepatology* 2007, **46**(3):622-630.
6. Dieterich D, Rockstroh JK, Orkin C, Gutierrez F, Klein MB, Reynes J, Shukla U, Jenkins A, Lenz O, Ouwerkerk-Mahadevan S *et al*: **Simeprevir (TMC435) With Pegylated**

- Interferon/Ribavirin in Patients Coinfected With HCV Genotype 1 and HIV-1: A Phase 3 Study.** *Clin Infect Dis* 2014, **59**(11):1579-1587.
7. Sulkowski MS, Naggie S, Lalezari J, Fessel WJ, Mounzer K, Shuhart M, Luetkemeyer AF, Asmuth D, Gaggar A, Ni L *et al*: **Sofosbuvir and ribavirin for hepatitis C in patients with HIV coinfection.** *JAMA* 2014, **312**(4):353-361.
 8. Shiffman ML, Benhamou Y: **Patients with HCV and F1 and F2 fibrosis stage: treat now or wait?** *Liver Int* 2013, **33 Suppl 1**:105-110.
 9. Fultz SL, Skanderson M, Mole LA, Gandhi N, Bryant K, Crystal S, Justice AC: **Development and verification of a "virtual" cohort using the National VA Health Information System.** *Med Care* 2006, **44**(8 Suppl 2):S25-30.
 10. Fisher SG, Weber L, Goldberg J, Davis F: **Mortality ascertainment in the veteran population: alternatives to the National Death Index.** *Am J Epidemiol* 1995, **141**(3):242-250.
 11. Sathiakumar N, Delzell E, Abdalla O: **Using the National Death Index to obtain underlying cause of death codes.** *J Occup Environ Med* 1998, **40**(9):808-813.
 12. Gunthard HF, Aberg JA, Eron JJ, Hoy JF, Telenti A, Benson CA, Burger DM, Cahn P, Gallant JE, Glesby MJ *et al*: **Antiretroviral treatment of adult HIV infection: 2014 recommendations of the International Antiviral Society-USA Panel.** *JAMA* 2014, **312**(4):410-425.
 13. Elixhauser A, Eisen SA, Romeis JC, Homan SM: **The effects of monitoring and feedback on compliance.** *Med Care* 1990, **28**(10):882-893.

14. Steiner JF, Koepsell TD, Fihn SD, Inui TS: **A general method of compliance assessment using centralized pharmacy records. Description and validation.** *Med Care* 1988, **26**(8):814-823.
15. Braithwaite RS, Kozal MJ, Chang CC, Roberts MS, Fultz SL, Goetz MB, Gibert C, Rodriguez-Barradas M, Mole L, Justice AC: **Adherence, virological and immunological outcomes for HIV-infected veterans starting combination antiretroviral therapies.** *AIDS* 2007, **21**(12):1579-1589.
16. Grossberg R, Zhang Y, Gross R: **A time-to-prescription-refill measure of antiretroviral adherence predicted changes in viral load in HIV.** *J Clin Epidemiol* 2004, **57**(10):1107-1110.
17. Heisler M, Hogan MM, Hofer TP, Schmittiel JA, Pladevall M, Kerr EA: **When more is not better: treatment intensification among hypertensive patients with poor medication adherence.** *Circulation* 2008, **117**(22):2884-2892.
18. Steiner JF, Prochazka AV: **The assessment of refill compliance using pharmacy records: methods, validity, and applications.** *J Clin Epidemiol* 1997, **50**(1):105-116.
19. Limketkai BN, Mehta SH, Sutcliffe CG, Higgins YM, Torbenson MS, Brinkley SC, Moore RD, Thomas DL, Sulkowski MS: **Relationship of liver disease stage and antiviral therapy with liver-related events and death in adults coinfecting with HIV/HCV.** *JAMA* 2012, **308**(4):370-378.
20. Lo Re V, 3rd, Lim JK, Goetz MB, Tate J, Bathulapalli H, Klein MB, Rimland D, Rodriguez-Barradas MC, Butt AA, Gibert CL *et al*: **Validity of diagnostic codes and liver-related laboratory abnormalities to identify hepatic decompensation events in the Veterans Aging Cohort Study.** *Pharmacoepidemiol Drug Saf* 2011, **20**(7):689-699.

21. Kirk GD, Mehta SH, Astemborski J, Galai N, Washington J, Higgins Y, Balagopal A, Thomas DL: **HIV, age, and the severity of hepatitis C virus-related liver disease: a cohort study.** *Ann Intern Med* 2013, **158**(9):658-666.
22. Sterling RK, Lissen E, Clumeck N, Sola R, Correa MC, Montaner J, M SS, Torriani FJ, Dieterich DT, Thomas DL *et al*: **Development of a simple noninvasive index to predict significant fibrosis in patients with HIV/HCV coinfection.** *Hepatology* 2006, **43**(6):1317-1325.
23. Wai CT, Greenson JK, Fontana RJ, Kalbfleisch JD, Marrero JA, Conjeevaram HS, Lok AS: **A simple noninvasive index can predict both significant fibrosis and cirrhosis in patients with chronic hepatitis C.** *Hepatology* 2003, **38**(2):518-526.
24. Justice AC, McGinnis KA, Atkinson JH, Heaton RK, Young C, Sadek J, Madenwald T, Becker JT, Conigliaro J, Brown ST *et al*: **Psychiatric and neurocognitive disorders among HIV-positive and negative veterans in care: Veterans Aging Cohort Five-Site Study.** *AIDS* 2004, **18 Suppl 1**:S49-59.
25. Butt AA, Fultz SL, Kwoh CK, Kelley D, Skanderson M, Justice AC: **Risk of diabetes in HIV infected veterans pre- and post-HAART and the role of HCV coinfection.** *Hepatology* 2004, **40**(1):115-119.
26. Collett D: ***Modeling Survival Data in Medical Research.* Second ed. New York: Chapman and Hall; 2003.**
27. Harrell FE, Jr., Lee KL, Mark DB: **Multivariable prognostic models: issues in developing models, evaluating assumptions and adequacy, and measuring and reducing errors.** *Stat Med* 1996, **15**(4):361-387.

28. Vickers AJ, Elkin EB: **Decision curve analysis: a novel method for evaluating prediction models.** *Med Decis Making* 2006, **26**(6):565-574.
29. Moons KG, Altman DG, Reitsma JB, Ioannidis JP, Macaskill P, Steyerberg EW, Vickers AJ, Ransohoff DF, Collins GS: **Transparent Reporting of a multivariable prediction model for Individual Prognosis or Diagnosis (TRIPOD): explanation and elaboration.** *Ann Intern Med* 2015, **162**(1):W1-73.
30. Royston P: **Multiple imputation of missing values: update.** *The STATA Journal* 2005, **5**(2):188-201.
31. Steinbrook R, Redberg RF: **The high price of the new hepatitis C virus drugs.** *JAMA Intern Med* 2014, **174**(7):1172.
32. Wilson PW, D'Agostino RB, Levy D, Belanger AM, Silbershatz H, Kannel WB: **Prediction of coronary heart disease using risk factor categories.** *Circulation* 1998, **97**(18):1837-1847.
33. Kanis JA, Johnell O, Oden A, Johansson H, McCloskey E: **FRAX and the assessment of fracture probability in men and women from the UK.** *Osteoporos Int* 2008, **19**(4):385-397.
34. Bambha K, Pierce C, Cox C, French AL, Tien PC, Sharp GB, Augenbraun M, Glesby MJ, Villacres MC, Plankey M *et al*: **Assessing mortality in women with hepatitis C virus and HIV using indirect markers of fibrosis.** *AIDS* 2012, **26**(5):599-607.
35. Park LS, Tate JP, Justice AC, Lo Re V, 3rd, Lim JK, Brau N, Brown ST, Butt AA, Gibert C, Goetz MB *et al*: **FIB-4 index is associated with hepatocellular carcinoma risk in HIV-infected patients.** *Cancer Epidemiol Biomarkers Prev* 2011, **20**(12):2512-2517.

36. Sarkar M, Bacchetti P, French AL, Tien P, Glesby MJ, Nowicki M, Plankey M, Gange S, Sharp G, Minkoff H *et al*: **Lower liver-related death in African-American women with human immunodeficiency virus/hepatitis C virus coinfection, compared to Caucasian and Hispanic women.** *Hepatology* 2012, **56**(5):1699-1705.
37. El-Serag HB, Kramer J, Duan Z, Kanwal F: **Racial differences in the progression to cirrhosis and hepatocellular carcinoma in HCV-infected veterans.** *Am J Gastroenterol* 2014, **109**(9):1427-1435.
38. Rosen HR, Weston SJ, Im K, Yang H, Burton JR, Jr., Erlich H, Klarquist J, Belle SH: **Selective decrease in hepatitis C virus-specific immunity among African Americans and outcome of antiviral therapy.** *Hepatology* 2007, **46**(2):350-358.
39. Nouredin M, Wright EC, Alter HJ, Clark S, Thomas E, Chen R, Zhao X, Conry-Cantilena C, Kleiner DE, Liang TJ *et al*: **Association of IL28B genotype with fibrosis progression and clinical outcomes in patients with chronic hepatitis C: a longitudinal analysis.** *Hepatology* 2013, **58**(5):1548-1557.
40. Barreiro P, Pineda JA, Rallon N, Naggie S, Martin-Carbonero L, Neukam K, Rivero A, Benito JM, Caruz A, Vispo E *et al*: **Influence of interleukin-28B single-nucleotide polymorphisms on progression to liver cirrhosis in human immunodeficiency virus-hepatitis C virus-coinfecting patients receiving antiretroviral therapy.** *J Infect Dis* 2011, **203**(11):1629-1636.
41. Meissner EG, Bon D, Prokunina-Olsson L, Tang W, Masur H, O'Brien TR, Herrmann E, Kottlilil S, Osinusi A: **IFNL4-deltaG genotype is associated with slower viral clearance in hepatitis C, genotype-1 patients treated with sofosbuvir and ribavirin.** *J Infect Dis* 2014, **209**(11):1700-1704.

Table 1. Baseline characteristics of the HIV/hepatitis C virus (HCV)-coinfected patients included in the study sample, overall and by end-stage liver disease status.

Characteristic	Overall (n=6,016)	End-Stage Liver Disease (n=532)	No End-Stage Liver Disease (n=5,484)	P-Value
Median age (years, IQR)	48 (44-53)	49 (45-53)	48 (44-52)	0.061
Male sex	5,929 (98.6)	532 (100.0)	5,397 (98.4)	0.003
Race/ethnicity				<0.001
Black	3,794 (63.1)	264 (49.6)	3,530 (64.4)	
Caucasian	1,474 (24.5)	164 (30.8)	1,310 (23.9)	
Hispanic	576 (9.6)	89 (16.7)	487 (8.9)	
Other/Unknown	172 (2.9)	15 (2.8)	157 (2.9)	
Body mass index				0.64
<18.5 kg/m ²	179 (3.0)	13 (2.4)	166 (3.0)	
18.5-24.9 kg/m ²	3,045 (50.6)	259 (48.7)	2,786 (50.8)	
25-29.9 kg/m ²	1,969 (32.7)	188 (35.3)	1,781 (32.5)	
≥30 kg/m ²	661 (11.0)	56 (10.5)	605 (11.0)	
Missing weight and/or height	162 (2.7)	16 (3.0)	146 (2.7)	
Diabetes mellitus	483 (8.0)	47 (8.8)	436 (8.0)	0.47
History of alcohol dependence/abuse	1,506 (25.0)	132 (24.8)	1,374 (25.1)	0.90
HCV genotype				0.18
1 or 4	3,553 (59.1)	306 (57.5)	3,247 (59.2)	
2 or 3	456 (7.6)	31 (5.8)	425 (7.7)	
Other	14 (0.2)	2 (0.4)	12 (0.2)	
No result available	1,993 (33.1)	193 (36.3)	1,800 (32.8)	
HCV RNA*				0.005
≥400,000 IU/mL and/or ≥1,000,000 copies/mL	4,514 (75.0)	371 (69.7)	4,143 (75.5)	
<400,000 IU/mL and/or <1,000,000 copies/mL	647 (10.8)	62 (11.7)	585 (10.7)	
Qualitative HCV RNA result only	855 (14.2)	99 (18.6)	756 (13.8)	
Hepatitis B surface antigen				0.031
Positive	263 (4.4)	33 (6.2)	230 (4.2)	
Negative	5,268 (87.6)	466 (87.6)	4,802 (87.6)	
No result available at baseline	485 (8.1)	33 (6.2)	452 (8.2)	
Median HIV RNA (copies/mL, IQR)	400 (75-4,870)	400 (179-3,726)	400 (75-4,905)	0.080
HIV RNA				0.66
>400 copies/mL	2,534 (42.1)	233 (43.8)	2,301 (42.0)	
≤400 copies/mL	3,245 (54.0)	277 (52.1)	2,968 (54.1)	
No result available at baseline	237 (3.9)	22 (4.1)	215 (3.9)	
Median CD4 cell count (cells/mm³, IQR)	320 (180-491)	294 (159-484)	322 (182-492)	0.043
CD4 cell count				0.23
≥500 cells/mm ³	1,377 (22.9)	113 (21.2)	1,264 (23.0)	

350-499 cells/mm ³	1,156 (19.2)	94 (17.7)	1,062 (19.4)	
200-349 cells/mm ³	1,544 (25.7)	135 (25.4)	1,409 (25.7)	
<200 cells/mm ³	1,629 (27.1)	166 (31.2)	1,463 (26.7)	
No result available at baseline	310 (5.2)	24 (4.5)	286 (5.2)	
Hemoglobin				0.29
<10 g/dL	161 (2.7)	18 (3.4)	143 (2.6)	
≥10 g/dL	5,820 (96.7)	509 (95.7)	5,311 (96.8)	
No result available at baseline	35 (0.6)	5 (0.9)	30 (0.5)	
APRI				<0.001
<1.0	4,095 (68.1)	209 (39.3)	3,886 (70.9)	
1.0-2.0	1,003 (16.7)	153 (28.8)	850 (15.5)	
>2.0	591 (9.8)	142 (26.7)	449 (8.2)	
No result available at baseline	327 (5.4)	28 (5.3)	299 (5.5)	
FIB-4				<0.001
<1.45	2,160 (35.9)	92 (17.3)	2,068 (37.7)	
1.45-3.25	2,561 (42.6)	205 (38.5)	2,356 (43.0)	
>3.25	968 (16.1)	207 (38.9)	761 (13.9)	
No result available at baseline	327 (5.4)	28 (5.3)	299 (5.5)	

Data are presented as number (%) unless otherwise specified.

Abbreviations: HCV=hepatitis C virus; HIV=human immunodeficiency virus; IQR=interquartile range

* Based on highest baseline HCV RNA result.

Table 2. Candidate prediction models for end-stage liver disease among 6,016 antiretroviral-treated HIV/hepatitis C virus-coinfected patients. C-statistics for the base prognostic models consisting of FIB-4 (categorized as: <1.45; 1.45-3.25; >3.25) and APRI (categorized as: <1.0; 1.0-2.0; >2.0) alone are presented in the top row. C-statistics for alternative prognostic models comprising FIB-4 or APRI plus select combinations of the other predictors are presented in subsequent rows below. Models with FIB-4 did not include age because age is a component of FIB-4.

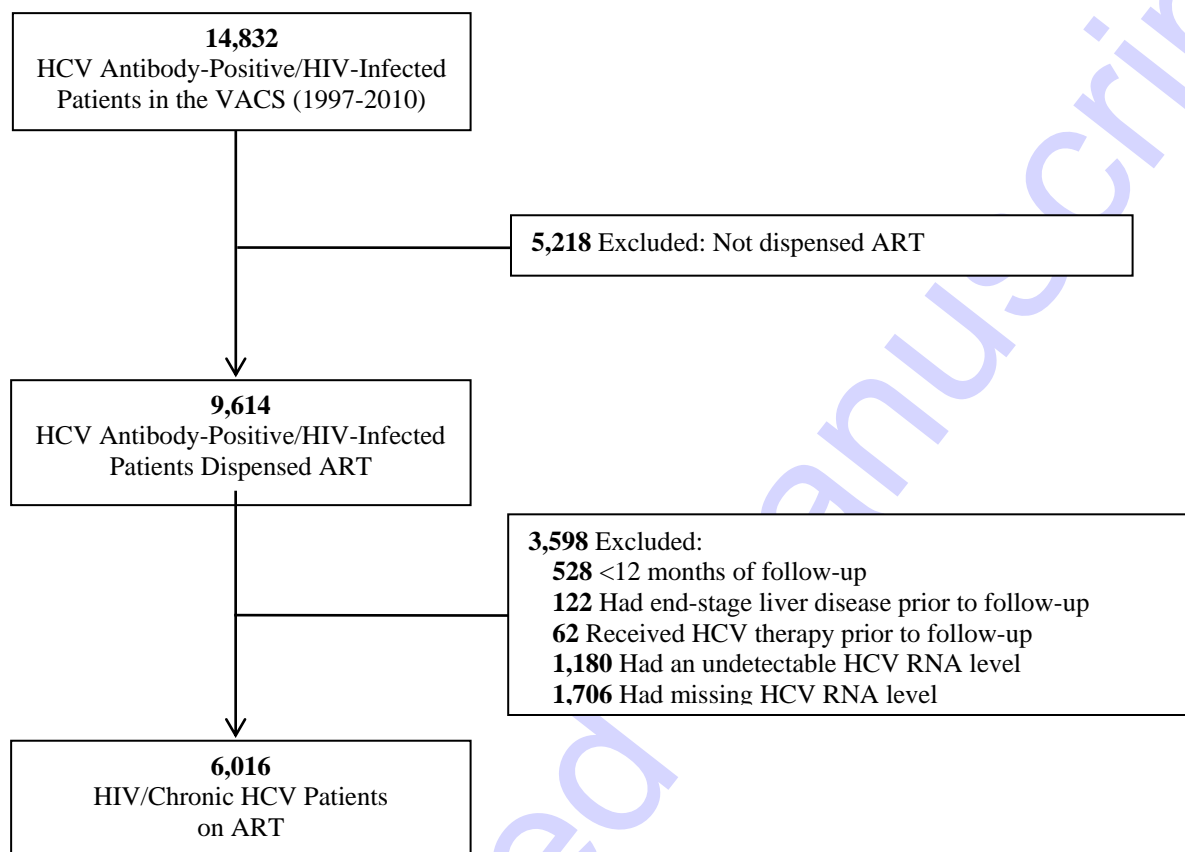
Prediction Model	C-Statistic	
	FIB-4-Based Model	APRI-Based Model
No additional predictors included (FIB-4 or APRI alone)	0.70	0.71
Alcohol included	0.71	0.72
Age included	-†	0.73
Race included	0.73	0.72
Age + race included	-†	0.74
Race + diabetes + hepatitis B + anemia included	0.74	0.74
Age + race + diabetes + hepatitis B + anemia included	-†	0.75
All predictors included*	0.74†	0.75

Abbreviations: APRI=Aspartate aminotransferase (AST)-to-platelet ratio index

* Covariates included age (for APRI-based model only), body mass index, anemia (hemoglobin <10 g/dL), CD4 cell count <200 cells/mm³, HIV RNA >400 copies/mL, history of alcohol dependence/abuse, diabetes mellitus, hepatitis B coinfection, and non-black race. FIB-4, APRI, hemoglobin, CD4 cell count, and HIV RNA level were also evaluated as continuous variables.

† C-statistic was not evaluated within the FIB-4-based models because age is a component of FIB-4.

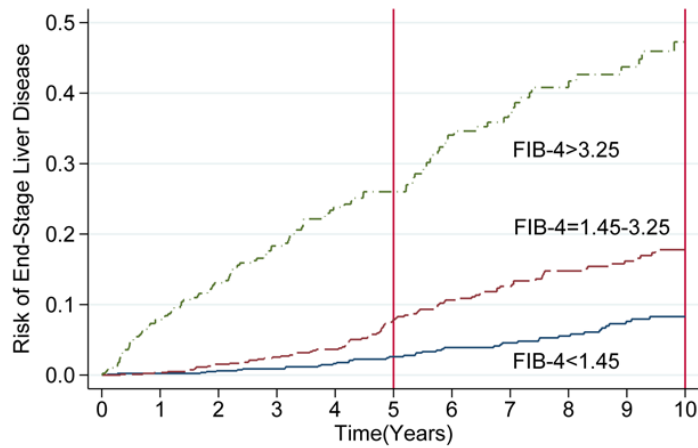
Figure 1. Selection of Veterans Aging Cohort Study (VACS) HIV/hepatitis C virus (HCV)-coinfected patients for inclusion in the study.



Abbreviations: ART=antiretroviral therapy; HIV=human immunodeficiency virus; HCV=hepatitis C virus; VACS=Veterans Aging Cohort Study

Figure 2. Risk of end-stage liver disease among antiretroviral-treated non-black (**Panel A**) and black (**Panel B**) HIV/hepatitis C virus-coinfected patients, by FIB-4 score.

A. Non-blacks



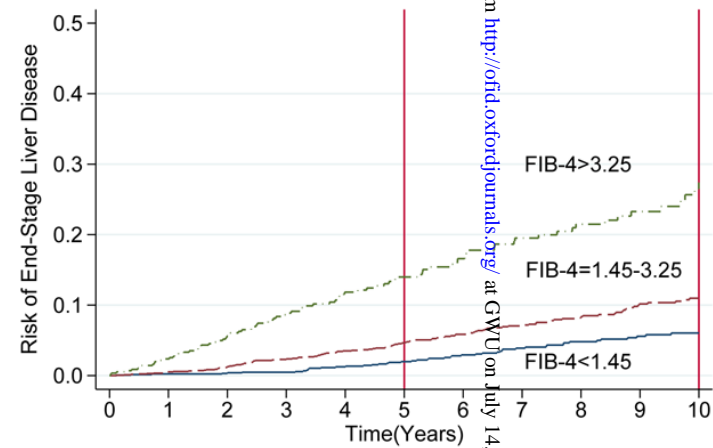
Number at risk

FIB-4<1.45	856	826	770	699	635	554	485	419	358	284	220
FIB-4= 1.45-3.25	837	804	725	644	562	471	394	337	275	218	165
FIB-4>3.25	393	335	287	223	181	155	114	91	67	51	40

FIB-4 Score	Risk of End-Stage Liver Disease at Specified Time				
	1 Year	3 Years	5 Years	7 Years	9 Years
<1.45	0.2%	0.9%	2.6%	4.6%	7.6%
1.45 – 3.25	0.4%	2.6%	7.9%	12.6%	16.2%
>3.25	7.9%	18.3%	26.0%	37.2%	43.7%

FIB-4=(age [years] x AST [U/L])/((platelet count [10⁹/L]) x (ALT [U/L])^{1/2})

B. Blacks



Number at risk

FIB-4<1.45	1304	1257	1180	1097	981	879	773	672	566	447	335
FIB-4=1.45-3.25	1724	1659	1520	1372	1216	1070	917	768	643	508	388
FIB-4>3.25	575	515	430	370	311	260	208	182	152	116	84

FIB-4 Score	Risk of End-Stage Liver Disease at Specified Time				
	1 Year	3 Years	5 Years	7 Years	9 Years
<1.45	0.2%	0.5%	2.0%	3.9%	5.6%
1.45 – 3.25	0.5%	2.3%	4.6%	7.2%	10.2%
>3.25	2.4%	8.6%	14.0%	19.5%	23.3%

FIB-4=(age [years] x AST [U/L])/((platelet count [10⁹/L]) x (ALT [U/L])^{1/2})

ACCE

Downloaded from <http://ofid.oxfordjournals.org/> at GWU on July 14, 2015