

Himmelfarb Health Sciences Library, The George Washington University Health Sciences Research Commons

Global Health Faculty Publications

Global Health

11-13-2012

The influence of climatic conditions on the transmission dynamics of the 2009 A/H1N1 influenza pandemic in Chile

Gerardo Chowell
Arizona State University

Sherry Towers
Arizona State University

Cecile Viboud
National Institutes of Health, Bethesda, MD

Rodrigo Fuentes
Ministerio de Salud, Santiago, Chile

Viviana Sotomayor
Ministerio de Salud, Santiago, Chile

See next page for additional authors

Follow this and additional works at: http://hsrc.himmelfarb.gwu.edu/sphhs_global_facpubs

 Part of the [Influenza Humans Commons](#), [International Public Health Commons](#), and the [Other Public Health Commons](#)

Recommended Citation

Chowell, G., Towers, S., Viboud, C., Fuentes, R., Sotomayor, V., Simonsen, L., Miller, M.A., Lima, M., Villarroel, C., Chiu, M., Villarroel, J.E., Olea, A. (2012). The influence of climatic conditions on the transmission dynamics of the 2009 A/H1N1 influenza pandemic in Chile. *BMC Infectious Diseases*, 12.

This Journal Article is brought to you for free and open access by the Global Health at Health Sciences Research Commons. It has been accepted for inclusion in Global Health Faculty Publications by an authorized administrator of Health Sciences Research Commons. For more information, please contact hsrc@gwu.edu.

Authors

Gerardo Chowell, Sherry Towers, Cecile Viboud, Rodrigo Fuentes, Viviana Sotomayor, Lone Simonsen, Mark A. Miller, Mauricio Lima, Claudia Villarroel, Monica Chiu, Jose E. Villarroel, and Andrea Olea

RESEARCH ARTICLE

Open Access

The influence of climatic conditions on the transmission dynamics of the 2009 A/H1N1 influenza pandemic in Chile

Gerardo Chowell^{1,2*}, Sherry Towers^{1,3}, Cécile Viboud², Rodrigo Fuentes⁴, Viviana Sotomayor⁴, Lone Simonsen^{2,5}, Mark A Miller², Mauricio Lima⁶, Claudia Villarroel⁷, Monica Chiu⁴, Jose E Villarroel⁴ and Andrea Olea⁴

Abstract

Background: The role of demographic factors, climatic conditions, school cycles, and connectivity patterns in shaping the spatio-temporal dynamics of pandemic influenza is not clearly understood. Here we analyzed the spatial, age and temporal evolution of the 2009 A/H1N1 influenza pandemic in Chile, a southern hemisphere country covering a long and narrow strip comprising latitudes 17°S to 56°S.

Methods: We analyzed the dissemination patterns of the 2009 A/H1N1 pandemic across 15 regions of Chile based on daily hospitalizations for severe acute respiratory disease and laboratory confirmed A/H1N1 influenza infection from 01-May to 31-December, 2009. We explored the association between timing of pandemic onset and peak pandemic activity and several geographical and demographic indicators, school vacations, climatic factors, and international passengers. We also estimated the reproduction number (R) based on the growth rate of the exponential pandemic phase by date of symptoms onset, estimated using maximum likelihood methods.

Results: While earlier pandemic onset was associated with larger population size, there was no association with connectivity, demographic, school or climatic factors. In contrast, there was a latitudinal gradient in peak pandemic timing, representing a 16-39-day lag in disease activity from the southern regions relative to the northernmost region ($P < 0.001$). Geographical differences in latitude of Chilean regions, maximum temperature and specific humidity explained 68.5% of the variability in peak timing ($P = 0.01$). In addition, there was a decreasing gradient in reproduction number from south to north Chile ($P < 0.0001$). The regional mean R estimates were 1.6-2.0, 1.3-1.5, and 1.2-1.3 for southern, central and northern regions, respectively, which were not affected by the winter vacation period.

Conclusions: There was a lag in the period of most intense 2009 pandemic influenza activity following a South to North traveling pattern across regions of Chile, significantly associated with geographical differences in minimum temperature and specific humidity. The latitudinal gradient in timing of pandemic activity was accompanied by a gradient in reproduction number ($P < 0.0001$). Intensified surveillance strategies in colder and drier southern regions could lead to earlier detection of pandemic influenza viruses and improved control outcomes.

Keywords: A/H1N1 influenza pandemic, Acute respiratory infection, Influenza-like-illness, Reproduction number, Spatial heterogeneity, School cycles, Climatological variables, Specific humidity, Temperature, Chile

* Correspondence: gchowell@asu.edu

¹Mathematical, Computational & Modeling Sciences Center, School of Human Evolution and Social Change, Arizona State University, Tempe, AZ, USA

²Division of Epidemiology and Population Studies, Fogarty International Center, National Institutes of Health, Bethesda, MD, USA

Full list of author information is available at the end of the article

Background

Increasing our understanding of host, environmental, and pathogen specific factors modulating the transmissibility and spatio-temporal dynamics of pandemic influenza has the potential to guide mitigation and surveillance strategies. Several factors have been put forward as potential drivers of the spatio-temporal dynamics of influenza pandemics, including population contact rates, travel patterns, climatic conditions, and geography. Recent studies of the 2009 A/H1N1 influenza pandemic have quantified the role of demographic factors, school cycles and social distancing measures (e.g., school closure) on disease transmission [1-5], but their effect combined with climatic factors is less clear [6,7]. In particular, experimental studies indicate that aerosol transmission of 2009 A/H1N1 influenza is sensitive to temperature and humidity levels [8]. Moreover, the timing and intensity of the 2009 A/H1N1 pandemic waves varied substantially across regions of the world [1,2,9-14], suggesting a potential link with local meteorological conditions. Further, the occurrence of recrudescence waves of pandemic activity in the South-Eastern US in winter 2010 was associated with low humidity levels [15].

The first cases of 2009 A/H1N1 pandemic influenza were confirmed on April 21–23 in California, USA, and Mexico [16,17], and soon after the pandemic virus became the dominant respiratory virus in the Southern Hemisphere's temperate countries [18,19]. Timing of pandemic activity coincided with the typical influenza winter season in this region which spans the months of May-September. Few studies have characterized A/H1N1 transmission dynamics in the Southern Hemisphere [2,5,20], and no study has explored variation in disease transmission at a small spatial scale in this region. Here we characterized the spatio-temporal dynamics of the 2009 influenza pandemic across Chile, a country which combines an extended latitudinal range with a solid epidemiological surveillance system. In this work, we assessed the relative contribution of environmental conditions, demographic factors, contact rates, and international travel patterns on pandemic A/H1N1 transmission, by modeling a large dataset of weekly hospitalizations for severe acute respiratory infection and laboratory-confirmed A/H1N1 influenza infection in the 15 administrative regions of Chile.

Methods

Geographical context

Chile is a South American country covering a long and narrow strip between the Andes mountains to the east and the Pacific Ocean to the west, ranging between latitude 17° and 56°S and longitudes 66° and 76°W. Chile's climate ranges from dry and desert in the north, Mediterranean in the centre, and rainy temperate in the south. The population of Chile is about 17 million with

40% of the population concentrated in the metropolitan region that includes the Capital, Santiago. Chile is divided into 15 contiguous administrative regions.

Epidemiological data

We relied on a large individual-level dataset comprising all hospitalizations for severe acute respiratory infection (hereafter referred to as SARI) reported by all public and private hospitals to the Chilean Ministry of Health during 01-May to 31-December 2009. The SARI symptom definition for children < 5 years included pneumonia or severe pneumonia together with any of the following symptoms: hypoxemia, dehydration or loss of appetite, respiratory difficulty, or hemodynamic compromise. The SARI definition for older individuals included any of the following symptoms: tachypnea, hypotension, dyspnea, cyanosis or hypoxemia [21]. The case definition did not change throughout the pandemic period.

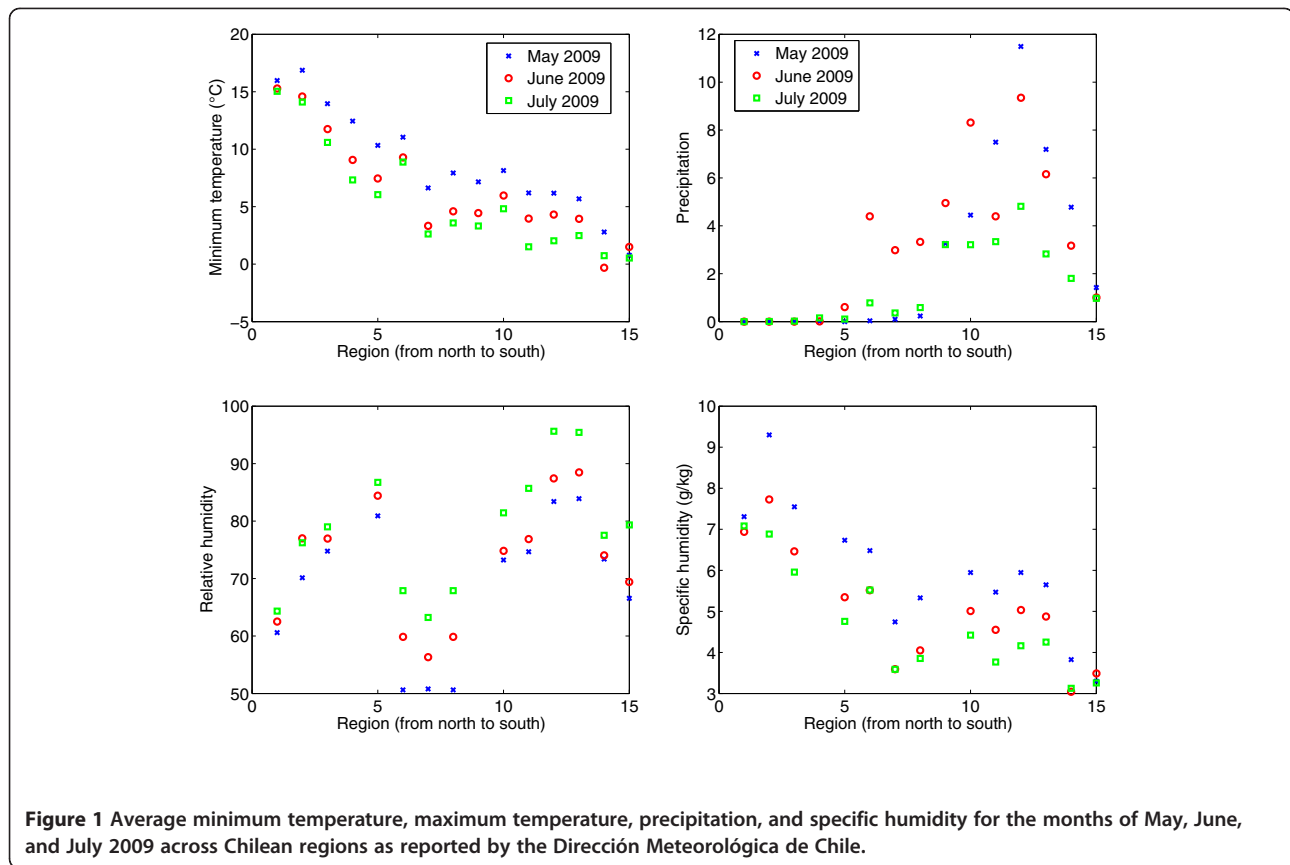
A total of 6146 SARI hospitalizations were reported to the Chilean Ministry of Health from May 1 to December 31, 2009, of which 3373 were laboratory tested (54.9%) via reverse transcriptase polymerase chain reaction (RT-PCR), performed by the Instituto Nacional de Salud Pública de Chile (ISP). A total of 1809 SARI hospitalizations (29.4%) were laboratory confirmed with A/H1N1 pandemic influenza, giving a positivity rate (A/H1N1-SARI/tested SARI) of 53.6%. For each hospitalized patient, we obtained age, gender, reporting region, and date of symptoms onset.

Population data

Previous studies have found population size to be partly correlated with spatial variation in timing of the 2009 A/H1N1 pandemic across geographic units (e.g. [1,2,22]). We obtained regional estimates of population size for 2009 from the Instituto Nacional de Estadísticas [23].

Climate data

Transmission of influenza in the laboratory setting has been found to be significantly associated with temperature and humidity levels [24-29]. To evaluate the link between pandemic influenza transmission and meteorological conditions in Chile, we collected daily regional time series of minimum and maximum temperature, precipitation, relative humidity, and specific humidity, reported by local meteorological stations for 2009 to the Dirección Meteorológica de Chile (Figure 1) [30]. Because relative humidity and specific humidity data were not available for all 15 regions, we supplemented our climate data using information from the National Oceanic and Atmospheric Administration records, accessible from the Weather Underground website (<http://www.wunderground.com/>). As a reference, in May 2009 during the initial pandemic growth phase in Chile, the minimum (respectively,



maximum) temperature ranged from 0.77°C (6.4°C) in the southernmost region of Magallanes to 16°C (22°C) in the northernmost region of Arica y Parinacota. Average precipitation was almost null in the 5 northernmost regions and highest in the Southern region of Los Rios (11.5 mm). Specific humidity varied from 3.3 g/kg in the southernmost region of Magallanes to 9.3 g/kg in the northern region of Tarapacá (Additional file 1: Figure S1).

International flight passenger data

We obtained data on the monthly number of international passengers arriving to international airports in Chile in 2008 and 2009 from Junta de Aeronáutica Civil [31]. We used 2008 data as a control for the potential impact of the pandemic on air travel. A total of 166,832 international passengers arrived to international airports of Chile in April 2009, representing a 1.5% reduction relative to April 2008. A larger reduction in incoming international air traffic was observed in May 2009 relative to May 2008 (12.5%).

International arrival data at regional seaports

We obtained data on the monthly number of international arrivals at Chilean seaports in 2009 from the Dirección General de Territorio Marítimo y Marina Mercante de la Fuerza Armada de Chile [32]. A total of

581 and 552 international arrivals were documented at Chilean seaports in April and May 2009, respectively.

Statistical analysis

Geographic patterns

We analyzed region- and age-specific time series of A/H1N1-positive SARI hospitalizations by day of symptom onset to analyze the geographic dissemination patterns of the pandemic across Chile (Figure 2). For each region, we recorded the cumulative number of A/H1N1-positive SARI hospitalizations during Apr-Dec 2009, the date of pandemic onset defined by the first A/H1N1-specific SARI hospitalization, and the date of pandemic peak defined as the date with maximal incidence by geographic regions. All regions experienced a single peak of pandemic activity. We analyzed the association between the dates of pandemic onset and peak timing with population size, latitude of population centres, climatic factors averaged during the exponential growth phase by geographic region and international inflow of air traffic and arrivals at seaports in May 2009 using univariate Spearman correlations. Finally, we built a multivariate linear regression model with all predictor variables to disentangle the factors explaining geographical variation in pandemic onset and peak timing across Chilean regions. We generated a simplified model by means of a

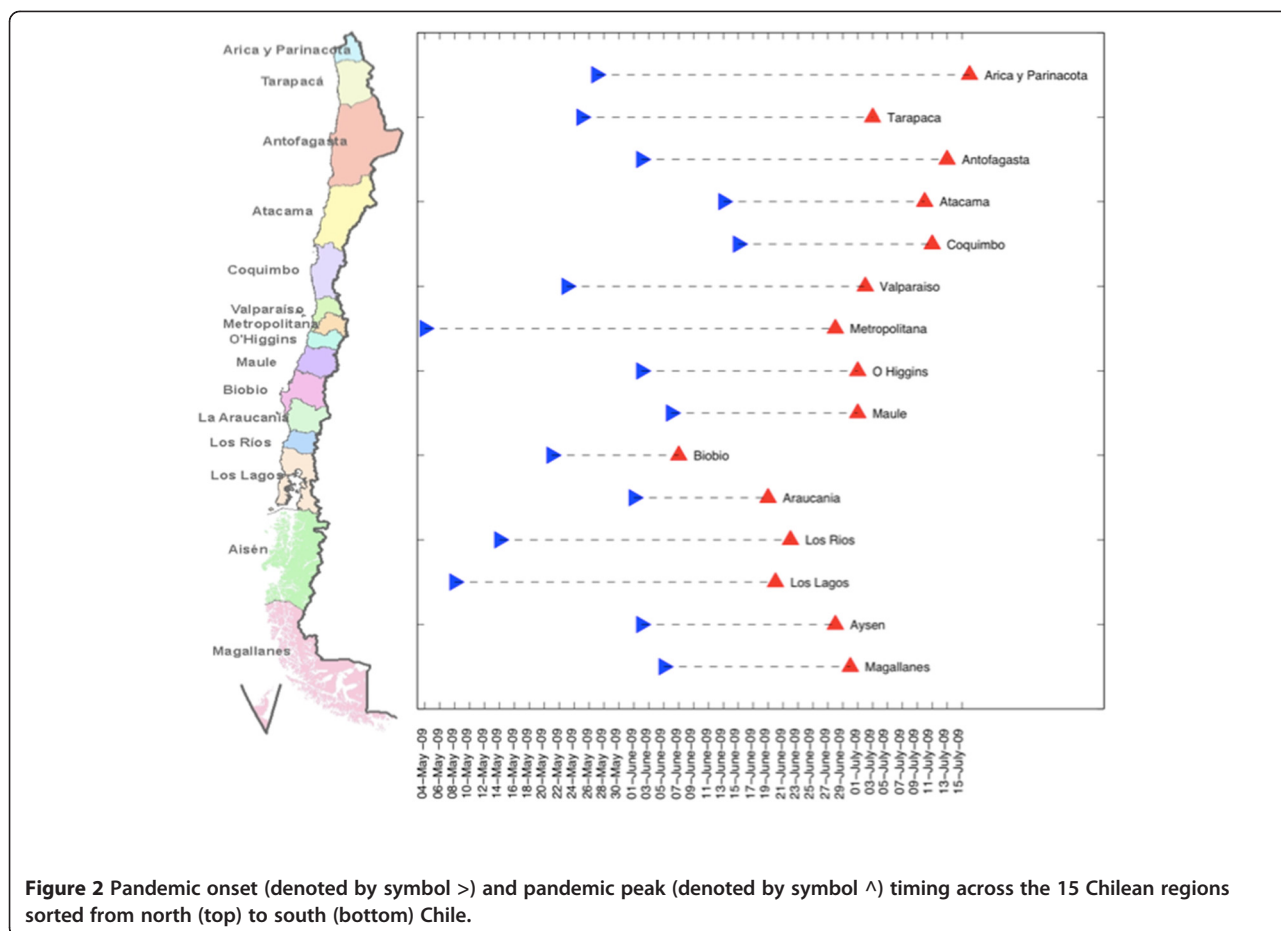


Figure 2 Pandemic onset (denoted by symbol >) and pandemic peak (denoted by symbol ^) timing across the 15 Chilean regions sorted from north (top) to south (bottom) Chile.

backward stepwise elimination procedure. As a sensitivity analysis, we repeated these analyses with all SARI hospitalizations.

Spatial autocorrelation

We also quantified the extent of spatial autocorrelation across geographic regions in our epidemiological data using Moran's I statistic [33] which is

$$I = \frac{n \sum_{i=1}^n \sum_{j=1}^n w_{ij} z_i z_j}{S_0 \sum_{i=1}^n z_i^2} \quad (i \neq j) \text{ where } n=15 \text{ is the}$$

number of Chilean regions, and w_{ij} is a nearest-neighbor spatial matrix where $w_{ij} = 1$ whenever regions i and j share borders (contiguous regions) and equals 0 otherwise. In addition, $z_i = x_i - \bar{x}$ where x_i is the number of A/H1N1-positive SARI hospitalizations per 100,000 people in region i , \bar{x} is the mean incidence across regions and S_0 is a normalization constant, such that $S_0 = \sum_{i=1}^n \sum_{j=1}^n w_{ij} \quad (i \neq j)$. We explored spatial autocorrelation during the main pandemic

months of May, June and July 2009. We assessed statistical significance via randomization by generating an empirical null distribution (no-auto-correlation) given by generating 10,000 artificial time series by permuting regions of the original data. That is, statistical significance was evaluated under the assumption that the statistics computed using the observed data was sampled from the reference distribution [34].

Impact of winter vacation period

School activities have been found to be significantly correlated with influenza transmission rates [3,35-37] and changes in age distribution of pandemic influenza incidence patterns [1,2,38]. We evaluated the geographic specific effect of the school closing period by exploring daily trends in the ratio of incident A/H1N1-positive SARI hospitalizations among the student population (5–20 years) to incident cases among all other age groups. The winter vacation period started on July 11, 2009 in most regions of Chile and coincided with the peak timing in the northern regions as shown in Figure 3. To avoid low case counts we aggregated the 15 region-specific time series into 3 broad geographic areas referred to as northern, central and southern areas.

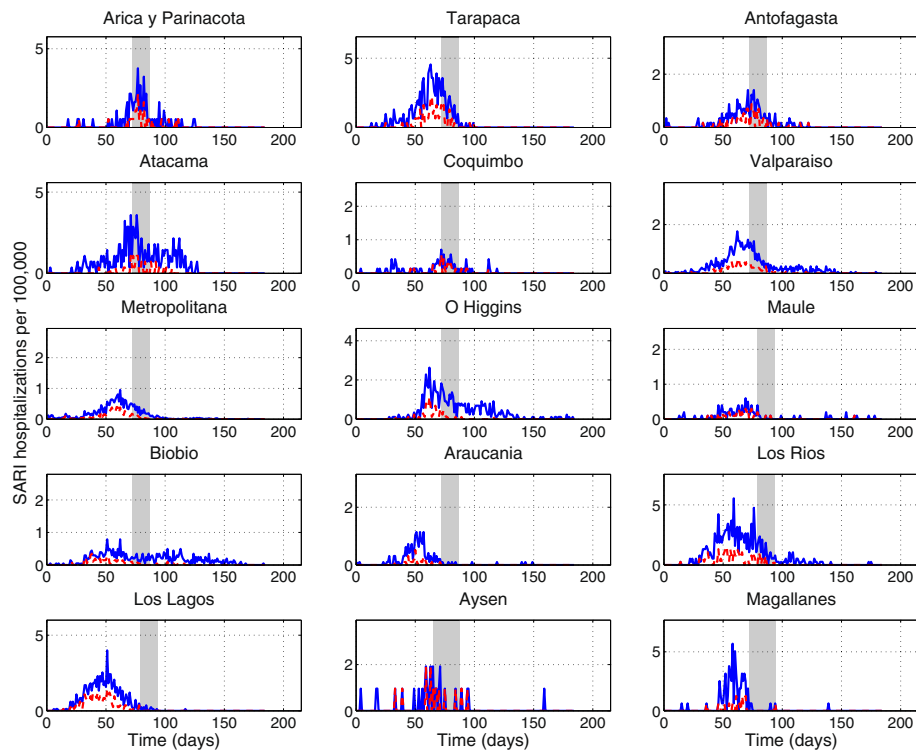


Figure 3 Daily number of SARI hospitalizations (solid blue line) and laboratory-confirmed A/H1N1 influenza SARI hospitalizations (dashed red line) per 100,000 people for 15 regions of Chile sorted from north to south Chile, May-October 2009. The grey shaded area indicates the region-specific winter school vacation period.

Estimation of the reproduction number

Because region-specific time series were generally sparse during the initial pandemic phase, we estimated the reproduction number of the 2009 A/H1N1 influenza pandemic across Chile using daily time series of A/H1N1-positive SARI hospitalizations for the 3 broad geographic areas (northern, central and south Chile). In the early stages of an epidemic, the epidemic grows exponentially, as the effect of increasing incidence on the depletion of the susceptible population remains small [39-41]. The exponential growth rate, r , can be estimated from the exponential growth phase of the pandemic, using a Poisson maximum likelihood method as explained in the Additional file 2: Supplement. The reproduction number can be derived by substituting the estimate for “ r ” into an expression derived from the linearization of the classical Susceptible-Exposed-Infectious-Recovered (SEIR) transmission model [41,42]:

$$R = \left(1 + \frac{r}{b_1}\right) \left(1 + \frac{r}{b_2}\right) \quad (1)$$

where $1/b_1$ and $1/b_2$ are respectively the mean latent and infectious periods which are assumed to be exponentially distributed. Hence, the mean generation interval between

two successive cases is given by $T_c = 1/b_1 + 1/b_2$. We assumed a mean generation interval of three ($1/b_1 = 1.5$ days and $1/b_2 = 1.5$ days) and four days ($1/b_1 = 2$ days and $1/b_2 = 2$ days) [43-46]. As a sensitivity analysis, we also obtained an upper bound R estimate for the extreme case of a fixed generation interval [41].

This study is covered by a formal collaborative agreement signed between the first author and representatives of the Chilean Ministry of Health. This study did not require ethics committee approval; epidemiological data were de-identified. Data employed in this study were collected for epidemiological surveillance purposes.

Results

Overall description of pandemic activity, May-Dec 2009

The first case of 2009 A/H1N1 influenza infection in Chile was reported on May 17th, 2009, coinciding with the fall season (see Additional file 1: Table S1 for a chronology of main events). Of note, the Chilean Ministry of Health recommended against non-essential travel to the US and Mexico after the initial pandemic alert on May 17th, and epidemiological surveillance was reinforced.

The time series of daily number of SARI hospitalizations and A/H1N1-positive SARI hospitalizations are

shown in Figures 2 and 3 for the 15 regions of Chile. The incidence curves of SARI hospitalizations were significantly correlated with those of A/H1N1-positive SARI hospitalizations (Figure 3, Spearman rho = 0.86, $P < 0.0001$). The pandemic A/H1N1 virus spread asynchronously across the 15 Chilean regions, following a South to North travelling pattern (Figure 2). The exponential growth phase consisted of 38 days for the northern geographic area (May 18th to June 24th), 30 days for the central area (May 18th to June 16th) and 18 days for the southern area (May 18th to June 4th).

We did not detect significant spatial autocorrelation in our region-specific time series of A/H1N1-positive SARI hospitalizations during the highest incidence months of May ($P = 0.61$), June ($P = 0.09$), or July ($P = 0.60$). We obtained similar results when using the time series of all SARI hospitalizations ($P > 0.12$).

Timing of pandemic onset

The onset date of the first SARI hospitalization across Chilean regions was associated with population size, with more populous regions experiencing earlier pandemic onset than low population regions (Spearman rho = -0.61, $P = 0.02$), but this correlation did not reach statistical significance using A/H1N1-positive SARI hospitalizations (Spearman rho = -0.4, $P = 0.14$). Moreover, pandemic onset was not correlated with latitude (rho = -0.14, $P = 0.61$), inflow of international air traffic passengers (rho = 0.3, $P = 0.28$) or the number of international arrivals at Chilean seaports (rho = 0.18, $P = 0.52$) in the first month of the pandemic in May 2009. The timing of local pandemic onset was not significantly correlated with climatological variables including minimum temperature (rho = 0.15, $P = 0.62$), maximum temperature (rho = -0.001, $P = 0.99$), precipitation (rho = -0.3, $P = 0.30$), relative humidity (rho = -0.05, $P = 0.89$) and specific humidity (rho = -0.08, $P = 0.80$), after adjusting for population size. Our sensitivity analysis based on all SARI hospitalizations gave similar results to those obtained using A/H1N1-positive SARI hospitalizations.

Timing of pandemic peak

We found a strong latitudinal gradient in pandemic peak timing identified from daily A/H1N1-positive SARI hospitalizations, with Southern regions experiencing earlier pandemic activity than Northern regions (Spearman rho =

0.80, $P = 0.0002$; Figure 2). A similar pattern was observed in the time series of all SARI hospitalizations (rho = 0.83, $P = 0.0001$). Specifically, the southernmost regions (Biobio, Araucania, Los Rios, Los Lagos, Aysen, and Magallanes) peaked 16-39-days earlier relative to the northernmost region (Arica y Parinacota). A similar geographical pattern was found in weekly reports of influenza-like-illnesses across 29 influenza sentinel units covering northern, central and southern regions of Chile (correlation between peak influenza-like-illness and latitude, Spearman rho = 0.43, $P = 0.02$; Additional file 1: Figures S2-S3). Next, we assessed the role of climate conditions, demographic factors, and international connectivity patterns in driving geographical variations in pandemic peak timing.

Peak timing was significantly correlated with most climatic factors studied during the exponential growth phase by geographic region including minimum temperature (Spearman rho = 0.64, $P = 0.009$), maximum temperature (Spearman rho = 0.59, $P = 0.02$), precipitation (Spearman rho = -0.88, $P < 0.0001$), and relative humidity (Spearman rho = -0.70, $P = 0.008$). In contrast, pandemic peak timing was not correlated with specific humidity (Spearman rho = 0.34, $P = 0.25$), population size (Spearman rho = -0.37, $P = 0.18$), incoming international air travel passengers (Spearman rho = 0.08, $P = 0.77$), or incoming international seaport arrivals (Spearman rho = -0.005, $P = 0.98$). Stepwise multivariate regression identified maximum temperature, specific humidity and latitude as the only significant predictors of regional pandemic peak timing ($R^2 = 68.5\%$, $P = 0.01$, Table 1), with earlier peak timing occurring in colder regions and at lower levels of specific humidity. Our sensitivity analysis based on the time series of all SARI hospitalizations gave consistent results; using all SARI hospitalizations the best model with maximum temperature, specific humidity and latitude explained 79.7% of the variability in peak timing ($P = 0.002$, Table 2).

Reproduction number

We estimated the mean R for the northern, central and southern geographic areas based on daily laboratory-confirmed A/H1N1-positive SARI hospitalizations. The exponential growth phase consisted of 38 days for the northern area (May 18th to June 24th), 30 days for the central region (May 18th to June 16th) and 18 days for

Table 1 Best-fit multivariate linear regression model of peak timing in A/H1N1-positive SARI hospitalizations derived via backward elimination procedure

Predictor variable	Coefficient (95% CI)	Coefficient of variation (R^2)	P value
Maximum temperature	-2.80 (-5.1, -0.47)	68.5%	0.01
Specific humidity	-5.96 (-11.27, -0.65)		
Latitude	2.47 (1.08, 3.87)		
Intercept	221.41 (121.56, 321.26)		

Table 2 Best-fit multivariate linear regression model of peak timing in all SARI hospitalizations derived via backward elimination procedure

Predictor variable	Coefficient (95% CI)	Coefficient of variation (R ²)	P value
Maximum temperature	-1.93 (-3.34, -0.51)	79.7%	0.002
Specific humidity	-4.5 (-7.75, -1.26)		
Latitude	1.9 (1.05, 2.76)		
Intercept	181.68 (120.61, 242.75)		

the southern region (May 18th to June 4th (Figure 4). The corresponding R estimates for the northern, central, and southern geographic areas were 1.19 (95% CI: 1.13, 1.24), 1.32 (1.27, 1.37), and 1.58 (1.45, 1.72), respectively assuming a three day mean generation interval, and 1.25 (95% CI: 1.18, 1.32), 1.43 (1.36, 1.50), and 1.81 (1.62, 2.0), respectively assuming a four day mean generation interval. The results show a decreasing gradient in R from southern to northern Chile. We perform pair-wise Pearson- χ^2 comparisons of the R estimates to test the null hypothesis that the estimates are drawn from the same mean. The pair-wise comparisons revealed significant geographical differences between regions at $P < 0.001$ level or better, with the largest difference being between

the southern and northern regions at $P < 0.0001$. Upper bound R estimates based on a fixed generation interval yielded slightly higher values (Table 3).

Impact of winter school vacation period

School vacation were synchronous across Chile, started on July 11, 2009, and lasted for 15 days. To assess the potential impact of school vacation on pandemic transmission, we evaluated trends of A/H1N1-positive SARI hospitalizations among students and non-student populations. At the national scale, the ratio of student to non-student cases decreased significantly by 76% during the 15-day winter vacation period relative to the

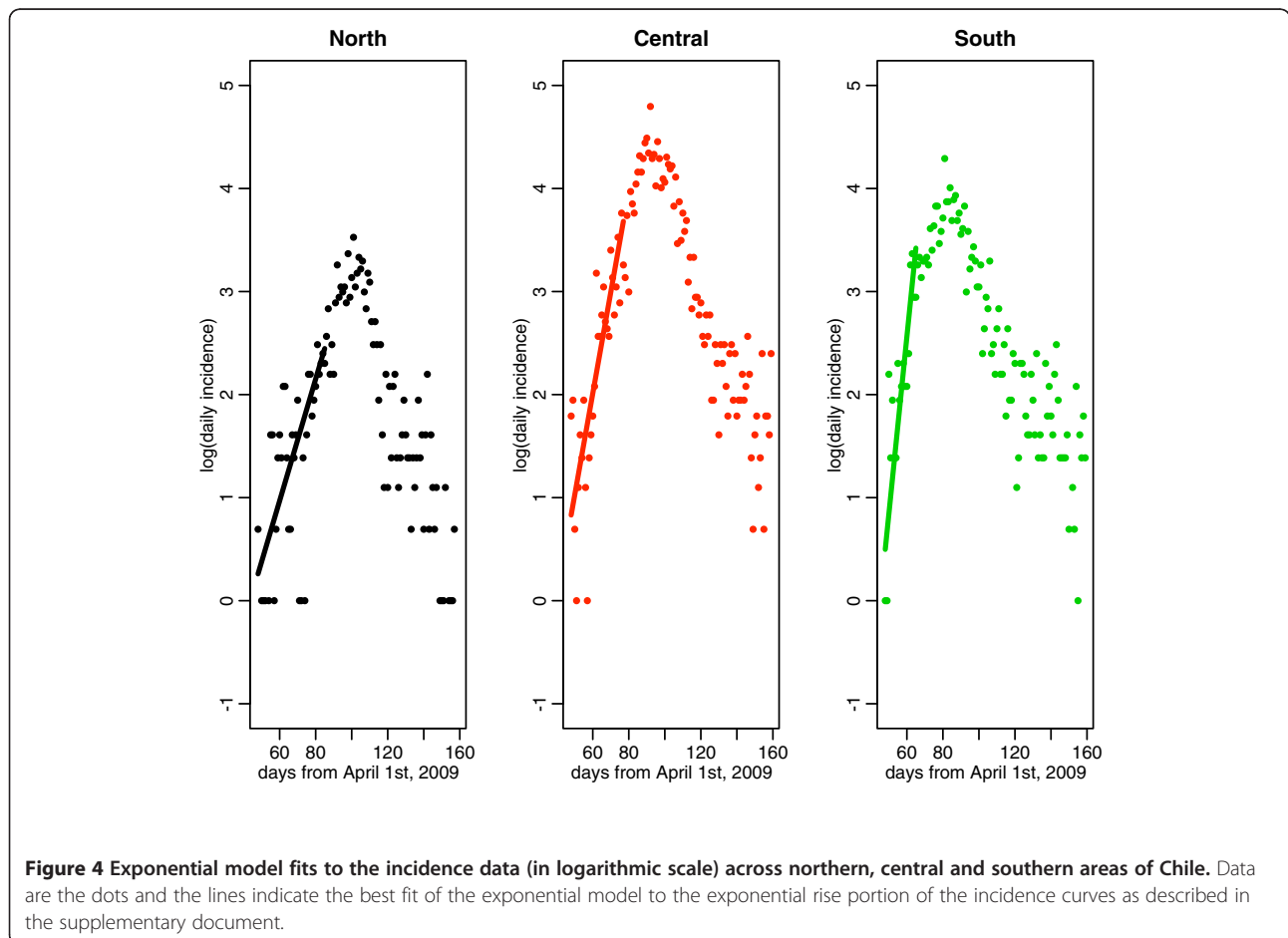


Table 3 Mean estimates of the reproduction number and corresponding 95% confidence intervals for the 2009 A/H1N1 influenza pandemic by geographic region

Distribution of generation interval	Geographic area					
	Northern area		Central area		Southern area	
	3-day serial interval	4-day serial interval	3-day serial interval	4-day serial interval	3-day serial interval	4-day serial interval
Exponentially-distributed	1.19 (1.13, 1.24)	1.25 (1.18, 1.32)	1.32 (1.27, 1.37)	1.43 (1.36, 1.50)	1.58 (1.45, 1.72)	1.81 (1.62, 2.0)
Fixed generation interval	1.19 (1.14, 1.25)	1.27 (1.19, 1.35)	1.34 (1.29, 1.40)	1.48 (1.40, 1.57)	1.68 (1.50, 1.87)	1.99 (1.72, 2.30)

The epidemic growth phase used to estimate the reproduction number consisted of 38 days for the northern area (May 18th to June 24th), 30 days for the central area (May 18th to June 16th) and 18 days for the southern area (May 18th to June 4th).

preceding 15-day period (Wilcoxon test, $P = 0.001$). Given the asynchrony in pandemic activity across Chile, the school vacation period coincided with different phases of the pandemic in different regions. In the northern area, the pandemic peaked at about the same time as the start of the winter vacation period. In contrast, pandemic activity in the central and southern regions had substantially declined when the winter vacation period began (Figure 5). Accordingly, the change in age distribution of cases associated with the winter vacation period was most pronounced in the North (220% reduction in the student to non-student ratio; Wilcoxon test, $P = 0.02$), intermediate in the central

geographic area (75% reduction, Wilcoxon test, $P = 0.03$), and non-existent in the Southern area (Wilcoxon test, $P = 0.2$).

Discussion

To the best of our knowledge this is the first study to explore the relationship between spatio-temporal variation in the dynamics of the 2009 A/H1N1 pandemic and demographic and climatic factors, and international travel patterns across a large range of latitudes. We found that the 2009 A/H1N1 pandemic influenza in Chile was characterized by a South to North gradient of increasingly late peak activity and decreasing disease transmissibility.

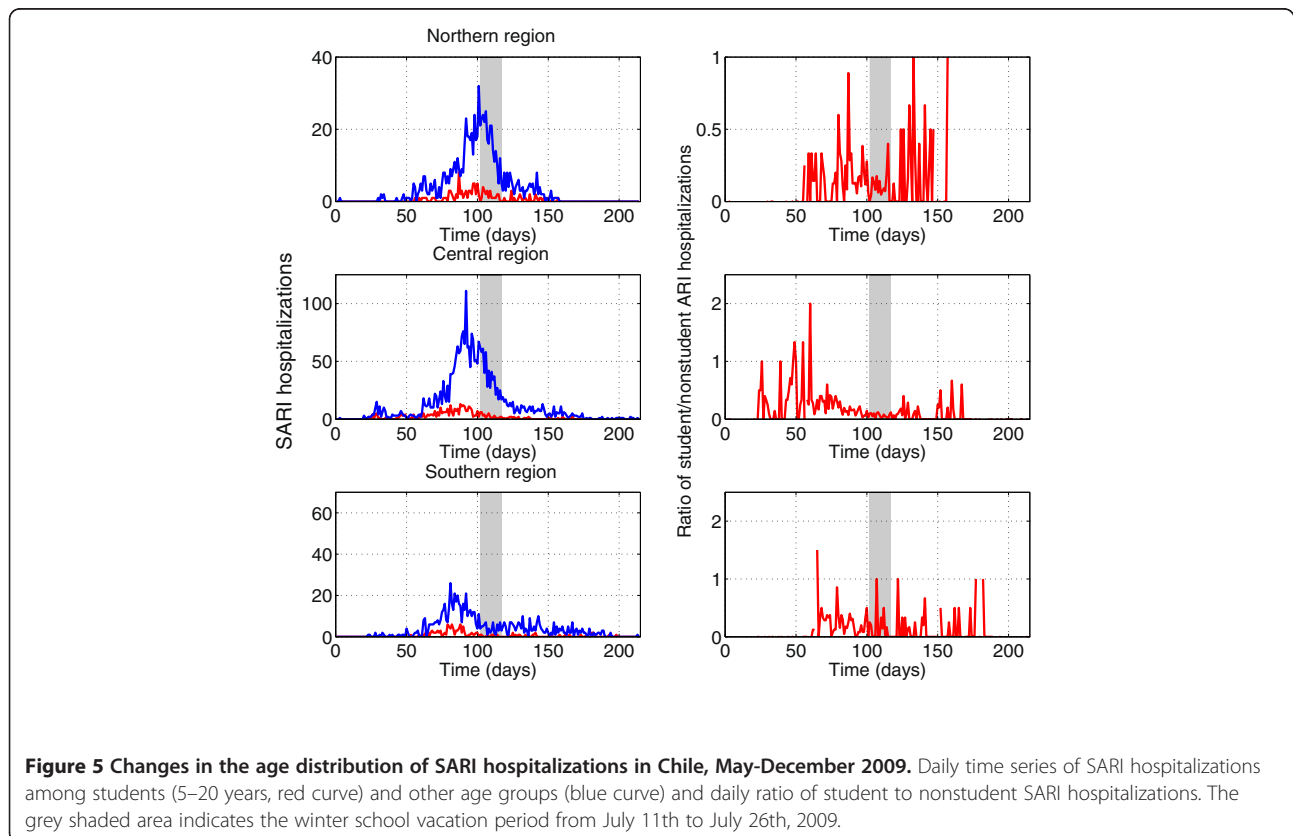


Figure 5 Changes in the age distribution of SARI hospitalizations in Chile, May-December 2009. Daily time series of SARI hospitalizations among students (5–20 years, red curve) and other age groups (blue curve) and daily ratio of student to nonstudent SARI hospitalizations. The grey shaded area indicates the winter school vacation period from July 11th to July 26th, 2009.

Geographical variation in pandemic peak timing was associated with differences in latitude and climatic conditions, with latitude, maximum temperature and specific humidity accounting for 69-80% of the variability. Our findings could have important public health implications. In particular, intensified surveillance strategies in southern regions could lead to earlier detection of novel influenza viruses and improved pandemic control outcomes.

The latitudinal gradient evidenced in laboratory-confirmed A/H1N1 SARI hospitalizations in this study is confirmed by geographical patterns in weekly incidence of influenza-like-illnesses reported to the Chilean Ministry of Health (Additional file 1: Figures S2-S3). In addition, our data are consistent with previous studies of laboratory-confirmed A/H1N1 influenza reporting peak pandemic activity on June 22, 2009 in the central region of Santiago [47], and on June 7-13, 2009, in the southern city of Puerto Montt [48].

The south-north gradient in peak timing observed in our study is consistent with a decreasing trend in the reproduction number in the same direction and is statistically associated with maximum temperature and specific humidity. These findings are in agreement with experimental studies suggesting that influenza transmission is more efficient under dry and cold conditions [24-29]. In particular, Chile experienced a south-north gradient in climatic conditions during May 2009 as pandemic activity was building up, ranging from 3.3 to 9.3 g/kg for specific humidity and 6.4°C to 22°C for maximum temperature.

The northward gradient of 2009 pandemic activity evidenced in Chile is reminiscent of the spread of the 2009 pandemic in Brazil, with the Southernmost regions of this country being hit earlier and experiencing greater severity than the Northernmost regions [49]. In contrast, seasonal influenza originates from low-population regions in the equatorial North of Brazil and travels to highly populous regions in the subtropical South over a 3-month period [50], together with a weak transmissibility gradient [51]. In light of the intriguing Brazilian experience, it would be interesting to contrast the spread of the 2009 pandemic with that of seasonal influenza in Chile. Unfortunately, SARI surveillance data was limited to the pandemic period in Chile and no comparable information exists for prior years.

Although the main period of pandemic activity in Chile seems primarily correlated with local climatic conditions, we note that the timing of introduction of the first A/H1N1 cases (pandemic 'onset') was weakly associated with population size, with larger population centers experiencing earlier introductions than less populous regions. This hierarchical pattern of spread is in agreement with seasonal influenza epidemics in the United States [52], the 2009 A/H1N1 influenza pandemic in Peru [2] and Mexico

[1], and the 1918 influenza pandemic in England and Wales [53,54]. The Chilean experience also suggests that despite early introduction of the A/H1N1 virus in a large population center like Santiago in May 2009, located in the center of the country, local climatic conditions were not favorable for immediate full-scale transmission of the pandemic virus.

Winter school vacation period started on July 11th and coincided with the beginning of the downward phase of the pandemic in northern regions, similar to the 2009 pandemic experience in Peru [2]. In contrast, pandemic activity was well into the declining phase by the time winter vacations started in southern and central regions. Accordingly, the shift in the age distribution of cases associated with the winter vacation period was most pronounced in the northern area. A similar pattern has been reported in previous studies [1,2]. Of note, a widespread teachers strike involving public schools across Chile (approximately from May 18th to June 8th, 2009) could have slowed down the initial growth rate of the pandemic, although we were not able to quantify the effect of the strike here.

Our reproduction number estimates are consistent with previous studies reporting estimates in the range 1.2-2.1 for Chile, using national ILI and laboratory-confirmed influenza A/H1N1 cases [5,20,55]. Further, R was estimated to be 1.8 (95% CI: 1.6, 2.0) for the southern region of Puerto Montt [48], in line with our R estimate for Chile's southern region ($R \sim 1.6-2.0$). Overall, our transmissibility estimates for Chile are consistent with the range of global estimates reported for community-based settings at 1.2-2.4 [1,2,5,18,43,48,56-63], while higher estimates have been obtained in school settings [2,44,64,65]. The surprising gradient of pandemic A/H1N1 transmissibility observed from South to North Chile could be associated with differences in climatic conditions, prior immunity, or baseline differences in influenza transmission between regions, similarly to those reported for Brazil [51]. Unfortunately, the resolution of our data did not allow for more detailed analysis.

Chile experienced a single pandemic wave in 2009 as did other Southern Hemisphere countries including Argentina [11], Australia [12,13], New Zealand [12] and Peru [2]. Other countries experienced multiple pandemic waves, including Mexico, the United States, and the United Kingdom [9,10,66]. The timing of pandemic waves has been correlated with population density, school cycles and the season in which the novel influenza virus is introduced into local populations [1,2]. Our 2009 pandemic study set in Chile adds to our current understanding of the role of climatic conditions in modulating the transmission dynamics of pandemic influenza.

Several strengths and caveats of our study are worth noting. We used data on all SARI hospitalizations as well as a subset of hospitalizations that were laboratory-confirmed for A/H1N1 infections, representing all public and private hospitals in Chile. Testing rates for A/H1N1 influenza remained at 35% throughout the pandemic and were comparable to those of other countries [1]. Moreover, national respiratory virus surveillance for influenza-like-illness demonstrated that A/H1N1 predominated among other respiratory viruses in 96% of individuals aged 5 years and over [47]. In contrast, RSV co-circulated with A/H1N1 influenza among children < 5 years, although influenza remained the dominant virus in this age group [18,47]. Because a total of 365 (5.7%) of the SARI hospital records were missing the date of symptoms onset, we used the date of notification for 197 of these records for which the date of notification was available. Differences in reporting across regions cannot be ruled out, although there was no evidence of weaker reporting rates in less populous regions. On the contrary, regions with lower population sizes reported more SARI hospitalizations proportionally than larger regions in Chile. We note that our estimates of the reproduction number were derived using simple methodology relying on the initial growth rate of the pandemic across geographic areas of Chile [41,67]. More detailed epidemiological data providing information on the number of imported cases could have allowed the use of more refined estimation methods, but were not available to us (see e.g., [68,69]).

Conclusions

In conclusion, there was a lag in the period of most intense 2009 pandemic influenza activity from southern to northern regions of Chile, significantly associated with geographical differences in maximum temperature and specific humidity. The latitudinal gradient in timing of pandemic activity was accompanied by a gradient in reproduction number ($P < 0.0001$). These two findings suggest that meteorological conditions may have modulated the transmissibility of 2009 A/H1N1 influenza in Chile. Our results could have significant public health implications for pandemic influenza control. Specifically, intensified surveillance strategies in southern regions could lead to early detection of pandemic influenza viruses and improved control outcomes. Furthermore, the spatial differences in the timing of local pandemic influenza in our study demonstrate the advantages of using high-resolution data to detect heterogeneous pandemic patterns. More studies are needed to determine whether these findings may be generalized to seasonal influenza epidemics and may be integrated in pandemic preparedness scenarios.

Additional files

Additional file 1: Table S1. Timeline of events relevant to the detection, control, and school activities during the 2009 influenza pandemic in Chile. **Figure S1.** Daily average minimum temperature in northern, central and southern regions of Chile. The northern geographic area comprises the 5 northernmost regions of: 1) Arica y Parinacota, 2) Tarapacá, 3) Antofagasta, 4) Atacama, and 5) Coquimbo; the broad central area includes the regions of 1) Valparaíso, 2) Metropolitana, 3) O'Higgins, and 4) Maule; and the broad southern geographic area includes the southernmost regions of 1) Biobío, 2) Araucanía, 3) Los Ríos, 4) Los Lagos, 5) Aysén, and 6) Magallanes. **Figure S2.** Pandemic peak timing based on weekly time series of influenza-like-illness (ILI) cases for 29 Chilean ILI sentinel sites of Chile during 52 epidemiological weeks in 2009 as reported to the Chilean Ministry of Health and shown in geographic order from north (top) to south (bottom). We found a significant shift in the peak timing from southern to northern provinces (Spearman $\rho = 0.43$, $P = 0.02$). Provinces from north to south: Arica, Iquique, Antofagasta, Atacama, Coquimbo, Valparaíso - San Antonio, Viña del Mar - Quillota, Aconcagua, Metropolitano Norte, Metropolitano Occidente, Metropolitano Central, Metropolitano Oriente, Metropolitano Sur, Metropolitano Sur Oriente, O'Higgins, Maule, Ñuble, Concepción, Talcahuano, Bio Bio, Arauco, Araucanía Norte, Araucanía Sur, Valdivia, Osorno, Del Reloncaví, Aysén, Magallanes, Chiloé. **Figure S3.** Weekly number of consolidated influenza-like-illness (ILI) cases in northern, central and southern geographic regions of Chile in 2009. The northern region is comprised by provinces: Arica, Iquique, Antofagasta, Atacama, Coquimbo; central region provinces: Valparaíso - San Antonio, Viña del Mar - Quillota, Aconcagua, Metropolitano Norte, Metropolitano Occidente, Metropolitano Central, Metropolitano Oriente, Metropolitano Sur, Metropolitano Sur Oriente, O'Higgins, Maule; southern region provinces: Ñuble, Concepción, Talcahuano, Bio Bio, Arauco, Araucanía Norte, Araucanía Sur, Valdivia, Osorno, Del Reloncaví, Aysén, Magallanes, Chiloé.

Additional file 2: Estimation of the reproduction number.

Competing interests

Authors declare no competing interests relevant to this study.

Authors' contributions

GC, ST and CV designed the study. RF, VS, CV, MC, JV, and AO participated in data acquisition. GC and ST analyzed the data and wrote the first draft of the manuscript. GC, ST, CV, RF, VS, LS, MM, and ML participated in the interpretation of results. All authors contributed to the writing and editing of the manuscript.

Acknowledgements

We thank all of the Chilean public and private health hospitals that collected all of the SARI data used in our study. We also thank the personnel in charge of the sentinel health care units that continuously provide influenza-like-illness reports, the Instituto de Salud Pública de Chile (ISP) for testing support, and the Departamento de Estadísticas e Información en Salud (DEIS) for facilitating demographic data.

Funding information

This research was conducted in the context of the MISMS (Multinational Influenza Seasonal Mortality Study), an ongoing international collaborative effort to understand influenza epidemiological and evolutionary patterns, led by the Fogarty International Center, National Institutes of Health (<http://www.origem.info/misms/index.php>). The MISMS study is funded by the International Influenza Unit, Office of Global Health Affairs, Department of Health and Human Services. LS acknowledges support from the RAPIDD (Research and Policy for Infectious Disease Dynamics) program of the Science and Technology Directorate, Department of Homeland Security, and the Fogarty International Center. ST acknowledges support of NSF grant DMS-1022758.

Author details

¹Mathematical, Computational & Modeling Sciences Center, School of Human Evolution and Social Change, Arizona State University, Tempe, AZ,

USA. ²Division of Epidemiology and Population Studies, Fogarty International Center, National Institutes of Health, Bethesda, MD, USA. ³Department of Mathematics, Purdue University, West Lafayette, IN, USA. ⁴Department of Epidemiology, Ministerio de Salud, Santiago, Chile. ⁵Department of Global Health, School of Public Health and Health Services, George Washington University, Washington DC, USA. ⁶Center for Advanced Studies in Ecology and Biodiversity, Pontificia Universidad Católica de Chile, Santiago, Chile. ⁷Applied Meteorology, Dirección Meteorológica de Chile, Santiago, Chile.

Received: 17 April 2012 Accepted: 5 November 2012

Published: 13 November 2012

References

- Chowell G, Echevarría-Zuno S, Viboud C, Simonsen L, Tamerius J, Miller MA, Borja-Aburto VH: **Characterizing the Epidemiology of the 2009 Influenza A/H1N1 Pandemic in Mexico.** *PLoS Medicine* 2011, **8**(5):e1000436.
- Chowell G, Viboud C, Munayco CV, Gomez J, Simonsen L, Miller MA, Tamerius J, Fiestas V, Halsey ES, Laguna-Torres VA: **Spatial and temporal characteristics of the 2009 A/H1N1 influenza pandemic in Peru.** *PLoS One* 2011, **6**(6):e21287.
- Chao DL, Elizabeth Halloran M, Longini IM Jr: **School Opening Dates Predict Pandemic Influenza A(H1N1) Outbreaks in the United States.** *J Infect Dis* 2010, **202**(6):877–880.
- Wu JT, Cowling BJ, Lau EH, Ip DK, Ho LM, Tsang T, Chuang SK, Leung PY, Lo SV, Liu SH, et al: **School closure and mitigation of pandemic (H1N1) 2009, Hong Kong.** *Emerg Infect Dis* 2010, **16**(3):538–541.
- Opatowski L, Fraser C, Griffin J, de Silva E, Van Kerkhove MD, Lyons EJ, Cauchemez S, Ferguson NM: **Transmission characteristics of the 2009 H1N1 influenza pandemic: comparison of 8 Southern hemisphere countries.** *PLoS Pathog* 2011, **7**(9):e1002225.
- Tamerius J, Nelson MI, Zhou SZ, Viboud C, Miller MA, Alonso WJ: **Global influenza seasonality: reconciling patterns across temperate and tropical regions.** *Environ Health Perspect* 2011, **119**(4):439–445.
- Tang JW: **The effect of environmental parameters on the survival of airborne infectious agents.** *J R Soc Interface* 2009, **6**(Suppl 6):S737–S746.
- Steel J, Staeheli P, Mubareka S, Garcia-Sastre A, Palese P, Lowen AC: **Transmission of pandemic H1N1 influenza virus and impact of prior exposure to seasonal strains or interferon treatment.** *J Virol* 2011, **84**(1):21–26.
- H1N1 Flu. Centers for Disease Control and Prevention.* Available from: <http://www.cdc.gov/h1n1flu/qa.htm>
- Ghani AC, Baguelin M, Griffin J, Flasche S, Pebody R, van Hoek AJ, Cauchemez S, Hall IM, Donnelly C, Robertson C, et al: **The Early Transmission Dynamics of H1N1pdm Influenza in the United Kingdom.** *PLoS Curr Influenza* 2010, RRN1130.
- Ministerio de Salud de Argentina. *Situación de Influenza A(H1N1) - Parte 87.* Available from: http://municipios.msal.gov.ar/h1n1/parte_influenza/parte_87_28-01-2010.pdf (accessed on 02/17/2010).
- Investigators AI, Webb S, Pettitl V, Seppelt I, Bellomo R, Bailey M, Cooper D, Cretikos M, Davies A, Finfer S, et al: **Critical Care Services and 2009 H1N1 Influenza in Australia and New Zealand.** *N Engl J Med* 2009, **361**(20):1925–1934.
- Bishop JF, Murnane MP, Owen R: **Australia's winter with the 2009 pandemic influenza A (H1N1) virus.** *N Engl J Med* 2009, **361**(27):2591–2594.
- Gog JR, Ballesteros S, Viboud C, Simonsen L, Edelman L, Grenfell BT: **Spatio-temporal patterns of the 2009 pandemic influenza in the US.** In *The Third International Conference on Infectious Disease Dynamics*. Edited by. Boston, MA, USA; 2011.
- Shaman J, Goldstein E, Lipsitch M: **Absolute humidity and pandemic versus epidemic influenza.** *Am J Epidemiol* 2011, **173**(2):127–135.
- Swine influenza A (H1N1) infection in two children—Southern California, March–April 2009. *MMWR Morb Mortal Wkly Rep* 2009, **58**(15):400–402.
- Outbreak of swine-origin influenza A (H1N1) virus infection - Mexico, March–April 2009. *MMWR Morb Mortal Wkly Rep* 2009, **58**(17):467–470.
- Van Kerkhove MD, Mounts AW, Mall S, Vandemaële KA, Chamberland M, dos Santos T, Fitzner J, Widdowson MA, Michalovec J, Bresee J, et al: **Epidemiologic and virologic assessment of the 2009 influenza A (H1N1) pandemic on selected temperate countries in the Southern Hemisphere: Argentina, Australia, Chile, New Zealand and South Africa.** *Influenza Other Respi Viruses* 2011, **5**(6):e487–e498.
- Ugarte S, Arancibia F, Soto R: **Influenza A pandemics: clinical and organizational aspects: the experience in Chile.** *Crit Care Med* 2010, **38**(4):133–137.
- Lessler J, dos Santos T, Aguilera X, Brookmeyer R, Cummings DA: **H1N1pdm in the Americas.** *Epidemics* 2010, **2**(3):132–138.
- Ministerio de Salud, Chile. *Influenza Pandémica (H1N1) 2009. Circular de vigilancia epidemiológica de influenza.* Available from: <http://epi.minsal.cl/epi/html/normas/circul/CircularInfluenzaESTACIONALyPANDEMICA.pdf>
- Fang LQ, Wang LP, de Vlas SJ, Liang S, Tong SL, Li YL, Li YP, Qian Q, Yang H, Zhou MG, et al: **Distribution and risk factors of 2009 pandemic influenza A (H1N1) in mainland China.** *Am J Epidemiol* 2012, **175**(9):890–897.
- Instituto Nacional de Estadísticas (INE). *Estadísticas Demográficas y Vitales, 2009.* Available from: http://www.ine.cl/canales/chile_estadistico/demografia_y_vitales/demo_y_vita.php
- Lowen AC, Mubareka S, Steel J, Palese P: **Influenza virus transmission is dependent on relative humidity and temperature.** *PLoS Pathog* 2007, **3**(10):1470–1476.
- Steel J, Palese P, Lowen AC: **Transmission of a 2009 pandemic influenza virus shows a sensitivity to temperature and humidity similar to that of an H3N2 seasonal strain.** *J Virol* 2011, **85**(3):1400–1402.
- Lowen AC, Steel J, Mubareka S, Palese P: **High temperature (30 degrees C) blocks aerosol but not contact transmission of influenza virus.** *J Virol* 2008, **82**(11):5650–5652.
- Mubareka S, Lowen AC, Steel J, Coates AL, Garcia-Sastre A, Palese P: **Transmission of influenza virus via aerosols and fomites in the guinea pig model.** *J Infect Dis* 2009, **199**(6):858–865.
- Shaman J, Kohn M: **Absolute humidity modulates influenza survival, transmission, and seasonality.** *Proc Natl Acad Sci U S A* 2009, **106**(9):3243–3248.
- Shaman J, Pitzer VE, Viboud C, Grenfell BT, Lipsitch M: **Absolute humidity and the seasonal onset of influenza in the continental United States.** *PLoS Biol* 2010, **8**(2):e1000316.
- Dirección Meteorológica de Chile. Accessed: 01/2012. Website: <http://www.meteochile.cl/>
- Junta de Aeronáutica Civil (JAC). *Air traffic statistics for 2009.* Available from: <http://www.jac-chile.cl/estadisticas/15-informes-estadisticos-mensuales-del-traffic-aereo/17-estadisticas-ano-2009.html>
- Armada de Chile. *General Directorate of Maritime Territory and Merchant Marine (DIRECTEMAR). Maritime Statistical Bulletin 2010.* Available from: http://web.directemar.cl/estadisticas/maritimio/h_default.htm
- Cliff AD, Ord JK: *Spatial processes: models and applications.* London: Pion Limited; 1981.
- Edgington ES, Onghena P: *Randomization tests.* Boca Raton, Florida: Chapman & Hall/CRC; 2007.
- Monto AS, Koopman JS, Longini IM Jr: **Tecumseh study of illness. XIII. Influenza infection and disease, 1976–1981.** *Am J Epidemiol* 1985, **121**(6):811–822.
- Cauchemez S, Ferguson NM, Wachtel C, Tegnell A, Saour G, Duncan B, Nicoll A: **Closure of schools during an influenza pandemic.** *Lancet Infect Dis* 2009, **9**(8):473–481.
- Cauchemez S, Valleron AJ, Boelle PY, Flahault A, Ferguson NM: **Estimating the impact of school closure on influenza transmission from Sentinel data.** *Nature* 2008, **452**(7188):750–754.
- Chowell G, Viboud C, Simonsen L, Miller MA: **Measuring the benefits of school closure interventions to mitigate influenza.** *Expert Rev Respir Med* 2011, **5**(5):597–599.
- Anderson RM, May RM: *Infectious diseases of humans.* Oxford: Oxford University Press; 1991.
- Chowell G, Ammon CE, Hengartner NW, Hyman JM: **Estimation of the reproductive number of the Spanish flu epidemic in Geneva, Switzerland.** *Vaccine* 2006, **24**(44–46):6747–6750.
- Wallinga J, Lipsitch M: **How generation intervals shape the relationship between growth rates and reproductive numbers.** *Proc Biol Sci* 2007, **274**(1609):599–604.
- Lipsitch M, Cohen T, Cooper B, Robins JM, Ma S, James L, Gopalakrishna G, Chew SK, Tan CC, Samore MH, et al: **Transmission dynamics and control of severe acute respiratory syndrome.** *Science* 2003, **300**(5627):1966–1970.
- Fraser C, Donnelly CA, Cauchemez S, Hanage WP, Van Kerkhove MD, Hollingsworth TD, Griffin J, Baggaley RF, Jenkins HE, Lyons EJ, et al: **Pandemic potential of a strain of influenza A (H1N1): early findings.** *Science* 2009, **324**(5934):1557–1561.

44. Yang Y, Sugimoto JD, Halloran ME, Basta NE, Chao DL, Matrajt L, Potter G, Kenah E, Longini IM Jr: **The transmissibility and control of pandemic influenza A (H1N1) virus.** *Science* 2009, **326**(5953):729–733.
45. Cauchemez S, Donnelly CA, Reed C, Ghani AC, Fraser C, Kent CK, Finelli L, Ferguson NM: **Household transmission of 2009 pandemic influenza A (H1N1) virus in the United States.** *N Engl J Med* 2009, **361**(27):2619–2627.
46. Cowling BJ, Chan KH, Fang VJ, Lau LL, So HC, Fung RO, Ma ES, Kwong AS, Chan CW, Tsui WW, et al: **Comparative epidemiology of pandemic and seasonal influenza A in households.** *N Engl J Med* 2010, **362**(23):2175–2184.
47. Torres JP, O’Ryan M, Herve B, Espinoza R, Acuna G, Manalich J, Chomali M: **Impact of the novel influenza A (H1N1) during the 2009 autumn-winter season in a large hospital setting in Santiago, Chile.** *Clin Infect Dis* 2010, **50**(6):860–868.
48. Pedroni E, Garcia M, Espinola V, Guerrero A, Gonzalez C, Olea A, Calvo M, Martorell B, Winkler M, Carrasco M, et al: **Outbreak of 2009 pandemic influenza A(H1N1), Los Lagos, Chile, April-June 2009.** *Euro Surveill* 2010, **15**(1) pii: 19456.
49. Schuck-Paim C, Viboud C, Simonsen L, Miller MA, Moura FE, Fernandes RM, Carvalho ML, Alonso WJ: **Were equatorial regions less affected by the 2009 influenza pandemic? The Brazilian experience.** *PLoS One* 2012, **7**(8):e41918.
50. Alonso WJ, Viboud C, Simonsen L, Hirano EW, Daufenbach LZ, Miller MA: **Seasonality of influenza in Brazil: a traveling wave from the Amazon to the subtropics.** *Am J Epidemiol* 2007, **165**(12):1434–1442.
51. Chowell G, Viboud C, Simonsen L, Miller M, Alonso WJ: **The reproduction number of seasonal influenza epidemics in Brazil, 1996–2006.** *Proc Biol Sci* 2010, **277**(1689):1857–1866.
52. Viboud C, Bjornstad ON, Smith DL, Simonsen L, Miller MA, Grenfell BT: **Synchrony, waves, and spatial hierarchies in the spread of influenza.** *Science* 2006, **312**(5772):447–451.
53. Chowell G, Bettencourt LM, Johnson N, Alonso WJ, Viboud C: **The 1918–1919 influenza pandemic in England and Wales: spatial patterns in transmissibility and mortality impact.** *Proc Biol Sci* 2008, **275**(1634):501–509.
54. Eggo RM, Cauchemez S, Ferguson NM: **Spatial dynamics of the 1918 influenza pandemic in England, Wales and the United States.** *J R Soc Interface* 2011, **8**(55):233–243.
55. Hsieh YH: **Pandemic influenza A (H1N1) during winter influenza season in the southern hemisphere.** *Influenza Other Respi Viruses* 2010, **4**(4):187–197.
56. Nishiura H, Chowell G, Safan M, Castillo-Chavez C: **Pros and cons of estimating the reproduction number from early epidemic growth rate of influenza A (H1N1) 2009.** *Theor Biol Med Model* 2010, **7**:1.
57. Paine S, Mercer GN, Kelly PM, Bandaranayake D, Baker MG, Huang QS, Mackereth G, Bissielo A, Glass K, Hope V: **Transmissibility of 2009 pandemic influenza A(H1N1) in New Zealand: effective reproduction number and influence of age, ethnicity and importations.** *Euro Surveill* 2010, **15**(24) pii: 19591.
58. McBryde E, Bergeri I, van Gemert C, Rotty J, Headley E, Simpson K, Lester R, Hellard M, Fielding J: **Early transmission characteristics of influenza A (H1N1)v in Australia: Victorian state, 16 May - 3 June 2009.** *Euro Surveill* 2009, **14**(42) pii: 19363.
59. Tuite AR, Greer AL, Whelan M, Winter AL, Lee B, Yan P, Wu J, Moghadas S, Buckeridge D, Pourbohloul B, et al: **Estimated epidemiologic parameters and morbidity associated with pandemic H1N1 influenza.** *CMAJ* 2010, **182**(2):131–136.
60. White LF, Wallinga J, Finelli L, Reed C, Riley S, Lipsitch M, Pagano M: **Estimation of the reproductive number and the serial interval in early phase of the 2009 influenza A/H1N1 pandemic in the USA.** *Influenza Other Respi Viruses* 2009, **3**(6):267–276.
61. Dorigatti I, Cauchemez S, Pugliese A, Ferguson NM: **A new approach to characterising infectious disease transmission dynamics from sentinel surveillance: Application to the Italian 2009–2010 A/H1N1 influenza pandemic.** *Epidemics* 2011, **4**(1):9–21.
62. Nishiura H, Wilson N, Baker MG: **Estimating the reproduction number of the novel influenza A virus (H1N1) in a Southern Hemisphere setting: preliminary estimate in New Zealand.** *N Z Med J* 2009, **122**(1299):73–77.
63. Balcan D, Hu H, Goncalves B, Bajardi P, Poletto C, Ramasco JJ, Paolotti D, Perra N, Tizzoni M, Van den Broeck W, et al: **Seasonal transmission potential and activity peaks of the new influenza A(H1N1): a Monte Carlo likelihood analysis based on human mobility.** *BMC Med* 2009, **7**:45.
64. Nishiura H, Castillo-Chavez C, Safan M, Chowell G: **Transmission potential of the new influenza A(H1N1) virus and its age-specificity in Japan.** *Euro Surveill* 2009, **14**(22) pii: 19227.
65. Lessler J, Reich NG, Cummings DA, Nair HP, Jordan HT, Thompson N: **Outbreak of 2009 pandemic influenza A (H1N1) at a New York City school.** *N Engl J Med* 2009, **361**(27):2628–2636.
66. *Secretaria de Salud. Current situation of the 2009 H1N1pdm influenza pandemic in Mexico [In Spanish].* Available from: http://portal.salud.gob.mx/sites/salud/descargas/pdf/influenza/situacion_actual_epidemia_091209.pdf (accessed on 12/15/2009).
67. Chowell G, Nishiura H, Bettencourt LM: **Comparative estimation of the reproduction number for pandemic influenza from daily case notification data.** *J R Soc Interface* 2007, **4**(12):155–166.
68. Katriel G, Yaari R, Huppert A, Roll U, Stone L: **Modelling the initial phase of an epidemic using incidence and infection network data: 2009 H1N1 pandemic in Israel as a case study.** *J R Soc Interface* 2011, **8**(59):856–867.
69. Nishiura H, Roberts MG: **Estimation of the reproduction number for 2009 pandemic influenza A(H1N1) in the presence of imported cases.** *Euro Surveill* 2011, **15**(29) pii: 19622.

doi:10.1186/1471-2334-12-298

Cite this article as: Chowell et al.: The influence of climatic conditions on the transmission dynamics of the 2009 A/H1N1 influenza pandemic in Chile. *BMC Infectious Diseases* 2012 **12**:298.

Submit your next manuscript to BioMed Central and take full advantage of:

- Convenient online submission
- Thorough peer review
- No space constraints or color figure charges
- Immediate publication on acceptance
- Inclusion in PubMed, CAS, Scopus and Google Scholar
- Research which is freely available for redistribution

Submit your manuscript at
www.biomedcentral.com/submit

