

Introduction

Washington, DC is home to one of the largest and most vibrant LGBT+ communities in the country [1]. The time is right to devise and implement a more coordinated approach to LGBT+ patient care and health professional training within the Washington, DC metropolitan area.

Vision

The proposed GW LGBT Health Initiative by Dr. Daniel F. O'Neill would be an LGBT+ entity analogous to those pioneered at other institutions, like Penn Medicine [2], but would emphasize the strengths unique to GW and Washington, DC.



The George Washington School of Medicine & Health Sciences



The George Washington University Hospital

The proposal highlights seven focus areas to reduce LGBT+ health disparities:

1. Climate/Visibility
2. Health Education
3. Policy/Advocacy
4. Community Outreach
5. Research
6. Patient Care
7. HIV/AIDS

Methods

A key stakeholder that is helping to realize the vision outlined in the GW LGBT Health Initiative is the student organization **GW Out for Health (GWOHF)**.



Led by an executive board of medical students and a faculty advisor, GWOHF has been working to improve the climate/visibility for LGBT+ and ally professional health students [3] and providing greater access to LGBT+ health education [4] on campus through grass roots efforts.

Results

GWOHF's 2014 accomplishments include the following:

1. Climate/Visibility

- New faculty advisor



Lawrence Deyton, MSPH, MD, Senior Associate Dean of Clinical Public Health, Professor of Medicine and Health Policy, The George Washington University School of Medicine & Health Sciences

- Unofficial GWSMHS Outlist
- American Medical Student Association (AMSA) rainbow caduceus pin sale

Results

1. Climate/Visibility (continued)

- Social Events



Robert Tollefson, MS2 (Left), and **Michelle Davis**, MS2 (Right), 2014-2015 GWOHF Co-presidents, at GWOHF's 2014 Joint Social Mixer with Howard and Georgetown's LGBT+ and ally medical student organizations



Chase Hiller, MS1 (Left), and **Domenique Escobar**, MS1 (Right), 2015-2016 GWOHF Co-presidents Elect, at the 2014 Walk To End HIV

2. Health Education

- Lunchtime Lecture Series featuring GW faculty members



"Transgender Care," by **Michael Irwig**, MD, FACE, Director of the Center for Andrology, Division of Endocrinology, Associate Professor of Medicine, The George Washington University School of Medicine & Health Sciences

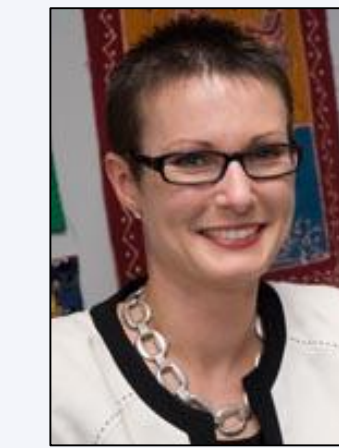


"Healthy Weight in Lesbian and Bisexual Women," by **Susan F. Wood**, PhD, Director of the Jacobs Institute of Women's Health, Associate Professor, Department of Health Policy and Management, The George Washington University Milken Institute School of Public Health

Results

2. Health Education (continued)

- Lunchtime Lecture Series featuring GW faculty members (continued)



"LGBT Aging," by **Kimberly D. Acquaviva**, PhD, MSW, Associate Dean for Faculty Affairs, Associate Professor, The George Washington University School of Nursing



"Caring for the Modern Family: Providing Culturally Competent Medical Care to LGBT Patients," by **Stephen L. Forssell**, PhD, Visiting Assistant Professor, Professional Psychology Program, Founding Director of the Graduate Program in LGBT Health Policy & Practice, Co-Director of the Institute for Health Promotion & Disease Prevention in Minority Communities, The George Washington University



"Stand Up, Speak Out: A History of LGBT Health at GW School of Medicine & Health Sciences," by **Jeffrey S. Akman**, MD, Walter A. Bloedorn Professor of Administrative Medicine, Dean of the School of Medicine & Health Sciences, Vice President for Health Affairs, The George Washington University

Conclusions

GWOHF's accomplishments have set a solid foundation for the creation of a future pipeline of social support and professional development for LGBT+ and ally professional health students at GW. GWOHF's growing presence on campus will be leveraged to support the proposed GW LGBT Health Initiative in the coming year by providing an advisory role in the areas of climate/visibility and health education.

References

1. Gates, G. and F. Newport (2013) *LGBT Percentage Highest in D.C., Lowest in North Dakota*. GALLUP Politics: State of the State <http://www.gallup.com/poll/160517/lgbt-percentage-highest-lowest-north-dakota.aspx>.
2. Penn Medicine Program for Lesbian, Gay, Bisexual, and Transgender Health. Retrieved from <http://www.pennmedicine.org/lgbt/>.
3. Snowdon, S. (2013) *Recommendations for Enhancing the Climate for LGBT Students and Employees in Health. Professional Schools: A GLMA White Paper* http://www.glma.org/data/n_0001/resources/live/Recommendations%20for%20Enhancing%20LGBT%20Climate%20in%20Health%20Professional%20Schools.pdf.
4. AAMC Advisory Committee on Sexual Orientation, Gender Identity, and Sex Development (2014) *Implementing Curricular And Institutional Climate Changes To Improve Health Care For Individuals Who Are LGBT, Gender Nonconforming, Or Born With DSD*. Washington, DC: Association of American Medical Colleges <https://www.aamc.org/download/414172/data/lgbt.pdf>.

Contact

Email: gwohf@gwu.edu

Facebook: <https://www.facebook.com/GWOutForHealth>

Website: <http://smhs.gwu.edu/diversity/student-groups>