

Available online on 15.01.2016 at <http://iddtonline.info>**Journal of Drug Delivery and Therapeutics**

An International Peer Reviewed Journal

Open access to Pharmaceutical and Medical research

© 2016, publisher and licensee JDDT, This is an Open Access article which permits unrestricted noncommercial use, provided the original work is properly cited

RESEARCH ARTICLE**URINE EXCRETION STUDY OF TAMOXIFEN METABOLITE, 3-HYDROXY-4-METHOXY TAMOXIFEN BY GC-MS**Rathi Ashu^{*1}, Jain Shila², Dr. Beotra Alka³, Trivedi Manisha⁴, Nimker Vandana⁵, Kumar Robin⁶¹Pharmacopoeial Associate, Indian pharmacopoeia commission, Ghaziabad, UP²Principal Scientific Director, National Dope Testing Laboratory (NDTL), New Delhi³Scientific Director, National Dope Testing Laboratory (NDTL), New Delhi⁴Scientific Assistant, Indian pharmacopoeia commission, Ghaziabad, UP⁵Research Associate, National Dope Testing Laboratory (NDTL), New Delhi⁶Principal Scientific Officer, Indian pharmacopoeia commission, Ghaziabad, UP**Corresponding Author's Email ID: ashurathi43@gmail.com*

Received 21 Dec 2015; Review Completed 08 Jan 2016; Accepted 11 Jan 2016, Available online 15 Jan 2016

ABSTRACT

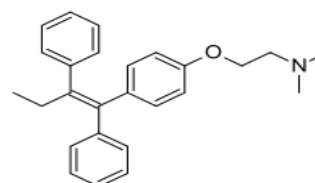
Background; Tamoxifen, is a first-generation selective estrogen receptor modulator which is widely used for adjuvant breast cancer therapy. Tamoxifen metabolites completely bind to estrogen receptor on tumors as well as other tissues and target a nuclear complex that decreases DNA synthesis and inhibits estrogen effects. But these Selective Estrogen Receptor Modulators (SERMs) are classified as Prohibited substances according to the list of forbidden substances in sports by the World Anti-Doping Agency (WADA) In sports male athletes use tamoxifen in fighting against increase of estrogen level in the body, breast swelling, gynecomastia and fat forming a pear-silhouette very successfully. **Aim;** In the present study Tamoxifen was investigated carefully by administering to a Healthy volunteer. **Material and Method;** Urine samples are collected at different hours from 1st day to 5th day and analyzed by GC-MS. **Result;** It was found that Tamoxifen is rapidly metabolized in to their metabolite 3-hydroxy-4-methoxy Tamoxifen. Urinary extracts were analyzed by Gas Chromatography-Mass spectrometric Detector by using Selective ion modulator (SIM) and targeted GC-MS techniques with accurate mass. By the GC-MS study it is observed that 3-hydroxy-4-methoxy Tamoxifen metabolite gives two neutral loss m/z value at 58 & 72, but m/z value 58 shows more abundance than 72m/z value, hence it was selected as the marker m/z value to check the presence of metabolite in urine. **Conclusion;** After oral administration, Tamoxifen metabolite can be detected in to their maximum period up to 5 days.

Key word: Doping, World Anti Doping Agency, Tamoxifen , GC-MSD, Human Urine , Solid phase Extraction**INTRODUCTION**

The Purpose of this study was to perform excretion study of Tamoxifen and to Detect its main active metabolite 3-hydroxy-4-methoxy by GC-MS. Tamoxifen (C₂₆H₂₉NO with mol mass-371.515,fig-1) works against the effect of estrogen on cell(an "anti-estrogen)slows the growth of cancer cell and prevent original breast cancer from returning. It also has beneficial effect of menopausal estrogen replacement therapy such as lowering of blood cholesterol and slowing of osteoporosis¹.

In recent year, athletic competition has intensified to the point that increasing number of athletes are striving to upgrade their performance with the desire to be recognized as the best. Hence a sports person needs to

keep himself vigorous, energetic, full of vitality and endurance. To achieve all this, some sports persons resort to pills and injections as shortcuts to success, as they don't understand that good genes, scientific coaching, proper nutrition and dedication to the task are what ultimately bring them success¹⁻². The use of performance enhancing drugs is banned in sports²⁻⁵.

Figure 1: Tamoxifen Chemical structure¹⁰.

Doping is the administration of or use by a competing athlete of any substance foreign to the body of any physiological substance in abnormal quantities or taken by an abnormal route of entry into the body with the sole purpose of increasing in an artificial and unfair manner his/her performance in competition. To check such practice, The international Olympic committee (IOC)/WADA has devised a list of substance banned for use by sports persons. Tamoxifen recently included anti-estrogenic substance in the WADA list of prohibited substance. This Drug is working as a selective Estrogen Receptor Modulator that activate/block the estrogen receptor by occupying the estrogen receptor site⁶⁻⁸. Use of Tamoxifen is prohibited in males because in male the anti-estrogen substance may cause an increase in the endogenous production of androgen and fights against increase in estrogen level in the body, breast swellings, gynecomastia. The objective of this study is to identify the activity of metabolite 3-hydroxy-4-methoxy Tamoxifen which is secondary metabolite from the primary major metabolites. After administration of single dose tamoxifen (20mg), the urine samples were collected at different hrs from the 1st-5th day. Tamoxifen is rapidly absorbed and attains steady-state serum level within 5 days. The Drug is extensively metabolized to N-demethyl-4-hydroxytamoxifen (major metabolite) and 4-hydroxytamoxifen (minor metabolite) primary metabolite. This primary metabolite further hydrolyzed in the form of secondary metabolites. Only the main major secondary metabolite 3-hydroxy-4-methoxytamoxifen (C₃H₈N) gives two different neutral loss m/z value at 58 & 72. 58 m/z value selected for the presence of metabolite in urine because it shows more abundance than 72m/z value⁸⁻¹⁰. The analytical method for analysis of the drug metabolism is Gas Chromatography Mass spectrometry (GCMS), because it is increasingly employed in the metabolic study of the drug with accurate mass measurement in order to predict unknown metabolites of Drug⁸⁻¹⁰.

MATERIAL AND METHOD

Methanol (HPLC grade), potassium carbonate & Anhydrous Sodium Sulphate were procured from Merck. Derivatizing agents Tertiary butyl methyl ether (TBME) and N-Methyl-N-(trimethylsilyl) trifluoroacetamide [MSTFA] were procured from Across Organics and Sigma Aldrich. B-glucuronidase was procured from Roche diagnostics. 17 α -methyl testosterone & chlorotestosterone (clostebol) acetate & deuterated testosterone & Epitestosterone were procured from Sigma Aldrich.

Preparation of Reagents

1. Amberlite XAD2

Mix 500g of XAD-2 in 500-600ml of acetone vigorously. Allow the mixture to stand for 10-15 min., aspirate the acetone & floating XAD-2 resin. Repeat this process two times. Place 500g of XAD-2 in a 1000ml glass bottle. Add 500-600ml of distilled water & mix vigorously. Allow the mixture to stand for 10-15min. Discard water layer and floating particles. Repeat this process five times with methanol. Keep at ambient temperature.

2. Amberlite XAD2 columns

Take clean Pasteur pipette. Put one glass bead. To pack the column, pour XAD-2 slurry slowly with the help of another Pasteur pipette carefully up to the height of approximately 3 inch & there should not be any air bubble inside. Wash the column with distilled water. Similarly prepare requisite number of XAD-2 column prior to analysis.

3. MSTFA/Iodo-TMS/DTE (1000/2/2)

Place 5ml of MSTFA in an amber colour glass bottle using a 5ml micropipette, add 10mg of dithioerythritol & mix well. Add 10ul of iodo-TMS using a micropipette. Keep at room temperature.

Preparation of internal standard:-

Solution 1:- Weigh 1.0mg of 17 α -methyl testosterone on the electronic balance; add 1.0ml ethanol to make 1mg/ml as stock solution.

Solution 2:- Weigh 1.3mg of chlorotestosterone acetate on the electronic balance, add 1.0ml ethanol to make 1mg/ml as stock solution of chlorotestosterone (clostebol). Take 100 μ l of solution 2 & add 900 μ l of ethanol to make 0.1mg/ml solution.

Solution 3:- Prepare 1mg/ml solution of d3- testosterone & d3- epitestosterone separately in ethanol.

Take 200 μ l stock solution1 in clean dry glass test tube & add 10 μ l of working solution -2 (0.1mg/ml solution), add 16 & 4 μ l from solution 3 respectively [d3- testosterone ; d3-epitestosterone(4:1)] evaporate the ethanol. Reconstitute the dry residue with 10ml ethanol to make working Internal STD & keep in the refrigerator below 0°C

Sample collection Protocol

After oral administration of tamoxifen (20mg), urine sample were collected at different interval for 5 days. A pinch of sodium azide was added in urine sample container as a preservative. The entire sample stored at 20°C after measuring pH and gravity.

Sample Extraction

1. Applied into XAD-2 column

The sample extraction procedure for given drug involves solid phase extraction. 2-4 ml of urine sample based on specific gravity was taken & 50 μ l of internal standard was added in XAD-2 column. XAD-2 column was first washed with distilled water & then it was eluted 5 times with 0.5ml methanol each. Squeeze the XAD-2 column properly to remove remaining methanol in the screw test tube. The hydrolysis process was carried out at 60°C for 1 hour. The solution was cooled to room temp. & the pH was adjusted to 9-10 adding 250 μ l of K₂CO₃. The mixture was extracted with 5ml of tertiary- butyl methyl ether; after horizontal shaking for 10 min & centrifugation (5 min, 3000rpm), the organic layer was separated by adding 1gm Na₂SO₄. The separated organic layer was taken in derivatizing tube which was dried up under N₂ evaporator at 60°C.

2. Derivatization

The sample was derivatized by adding 50 μ l MSTFA/iodo TMS/dithiocrythritol (1000/2/2). Derivatization was carried out at 60°C for 30 minutes. Derivatizing tube was then transferred into 200 μ l conical glass vial & then 2 μ l was injected into GCMS.

3. Instrumentation

The analyses were performed in a Hewlett Packard GC-MSD system. The GC was carried out using a ultra-1 dimethylpolymer polysiloxane fused silica capillary column from Agilent Technologies (ultra1, 17-m \times 0.22-mm id, 0.11- μ m), operated in SIM and scan modes. Two micro liters was injected into the GC-MSD in the split mode (1:11). The GC-MSD parameters included a column flow of 0.2mL/min of Helium. The injector temperature was 280°C in the split mode. The oven temperature was programmed from 180°C, 1 min hold to 229°C at a rate of 3°C/min and then from 229°C to 300°C at rate of 40°C/min. The final Run time was 23.1 min. It was operated in the SIM mode using a post run macro for anabolic steroids including ions m/z 58, 72, and 489 at the retention time of Tamoxifen metabolite of tamoxifen. (Figure 4).

RESULT AND DISCUSSION

RESULTS

After oral administration of single dose (20mg) tamoxifen to a healthy volunteer, urine samples were collected and studied by the GC-MS. The mass spectrum of tamoxifen in product ion sim mode was studied carefully, which was chemically characterized and observed that Tamoxifen firstly gives seven major metabolite (fig-2), these metabolite further hydrolyzed in to the secondary metabolite in urine. In the resulted secondary metabolite it seems that the only 3-hydroxy-4-methoxy tamoxifen (Secondary metabolite) shows the main activity than other metabolite. A metabolite was obtained by the accurate extraction of the m/z 390.2060 (Fig.3). On the basis of accurate mass results, M6 had additional two oxygen atoms and a reduced carbon atom than unchanged tamoxifen, which showed the existence of two hydroxyl groups. Product ion at m/z 58.0655 (C₃H₇N, masscalc = 58.0651) in targeted MS/MS experiment indicated the presence of N-desmethylated side chain.

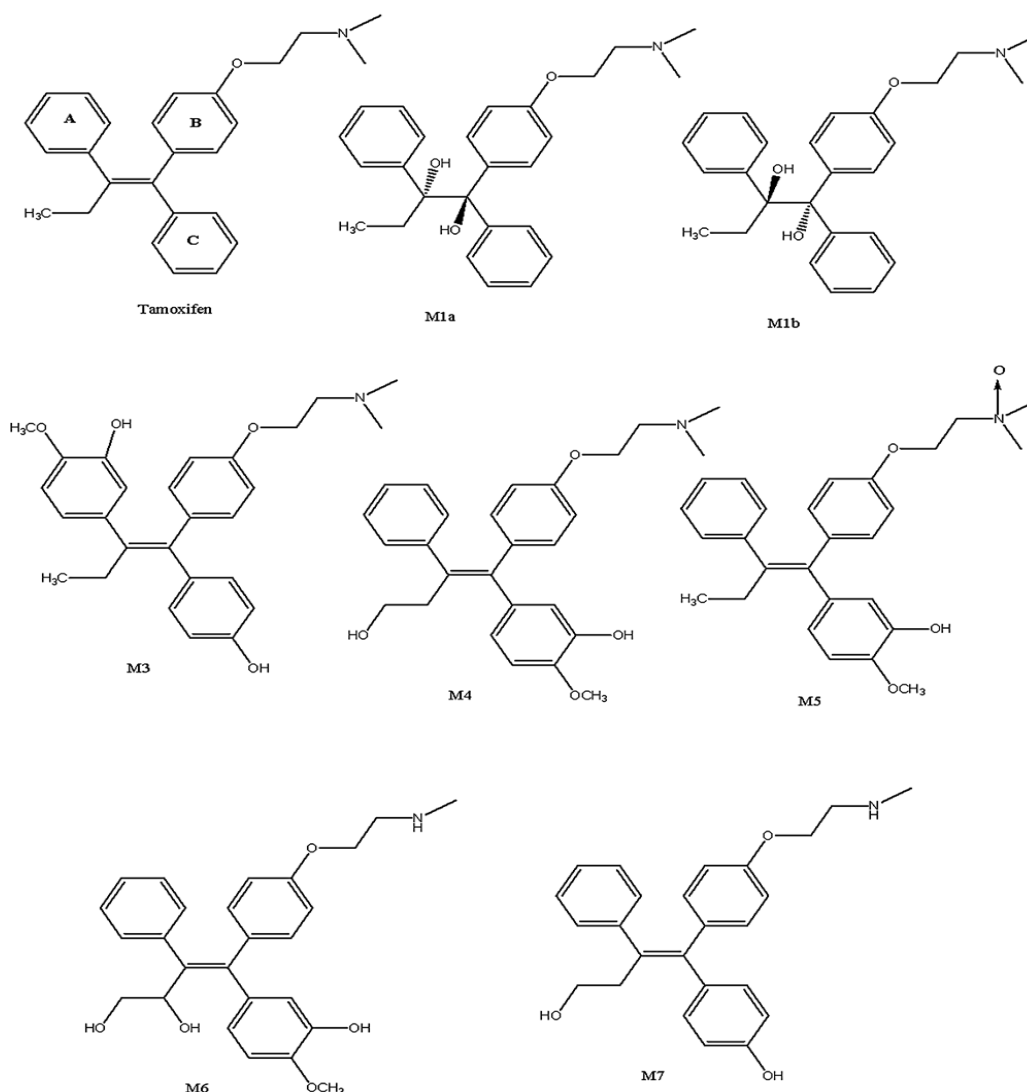


Figure 2: The chemical structures of tamoxifen and its new metabolites in human urine².

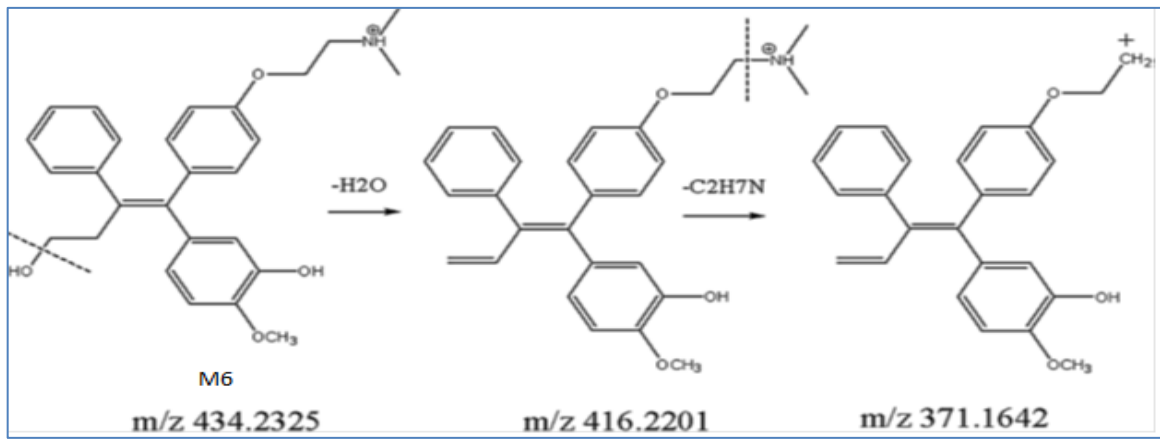


Figure 3: Proposed mass spectrometry fragmentation pathway of $\alpha,3$ -hydroxy-4-methoxy-tamoxifen².

By the GC-MS Chromatography study it observed that only 58 m/z value shows more abundance than 72 m/z value in the Chromatogram, Therefore 58 m/z value selected as a marker m/z value to check the presence of tamoxifen metabolite in the urine sample(Fig-4b,4c).All urine samples collected at the different time intervals were examined by GC-MSD . A blank was also injected in GC-MS (Fig-4a) to observe the chromatogram and mass spectrum. It was observed that excretion of 3-hydroxy-4-methoxy tamoxifen which is a metabolite of tamoxifen started appearing in urine from the 1 hr. The highest peak concentration of this metabolite was observed at 8.5 hrs after the administration of tamoxifen. No further excretion of metabolite was found after 75 hrs in urine as demonstrated with decrease in abundance from 8.5 hours as shown in figure no. 5 and Table no. 1

Table 1: Abundance of m/z 58 of 3-Hydroxy-4-Methoxy Tamoxifen Metabolite at Different hours:

S.No.	Hours	pH	Abundance of Tamoxifen Metabolite
1	1hr	5.5	7,000
2	2hr	6.0	3,000
3	4hr	5.5	18,000
4	6hr	6.0	35,000
5	8.5hr	6.5	90,000
6	11hr	6.5	55,000
7	13.5hr	7.5	65,000
8	19hr	6.5	45,000
9	30hr	5.5	35,000
10	51hr	6.0	20,000
11	65hr	6.0	24,000
12	75hr	6.0	3,000

GC-MS Chromatograms showing Abundance of m/z 58 of 3-Hydroxy-4-Methoxy Tamoxifen.

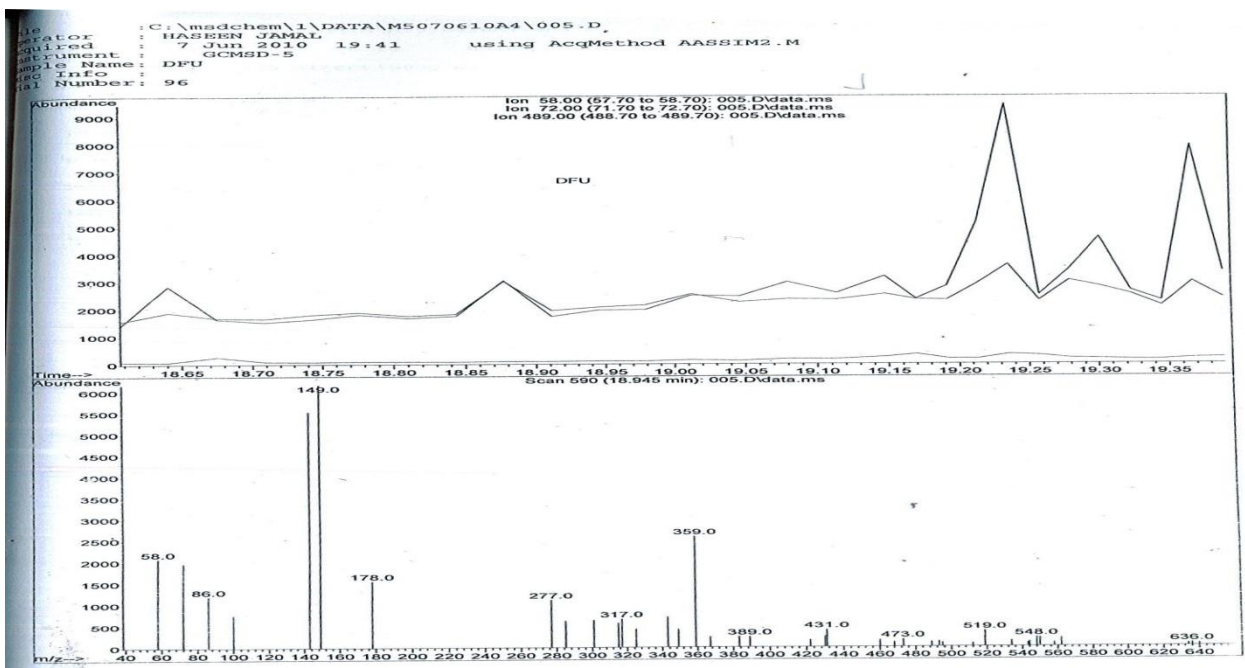


Figure 4a: The extraction ion chromatogram and mass spectrum of blank in targeted GCMS SIM mode .

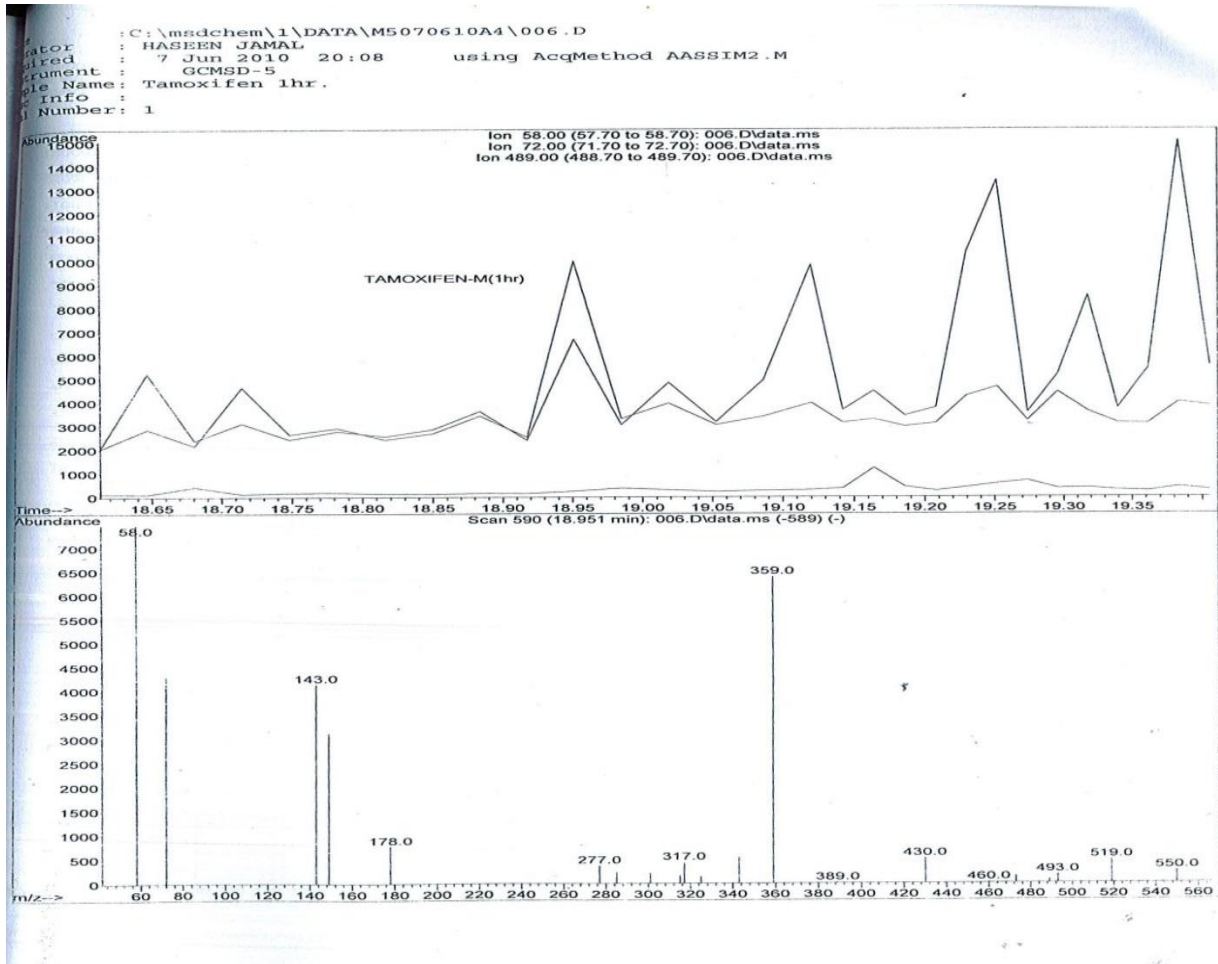


Figure 4b: The extraction ion chromatogram and mass spectrum of 3-hydroxyl-4- methoxy tamoxifen at 1hr in targeted GCMS SIM mode .

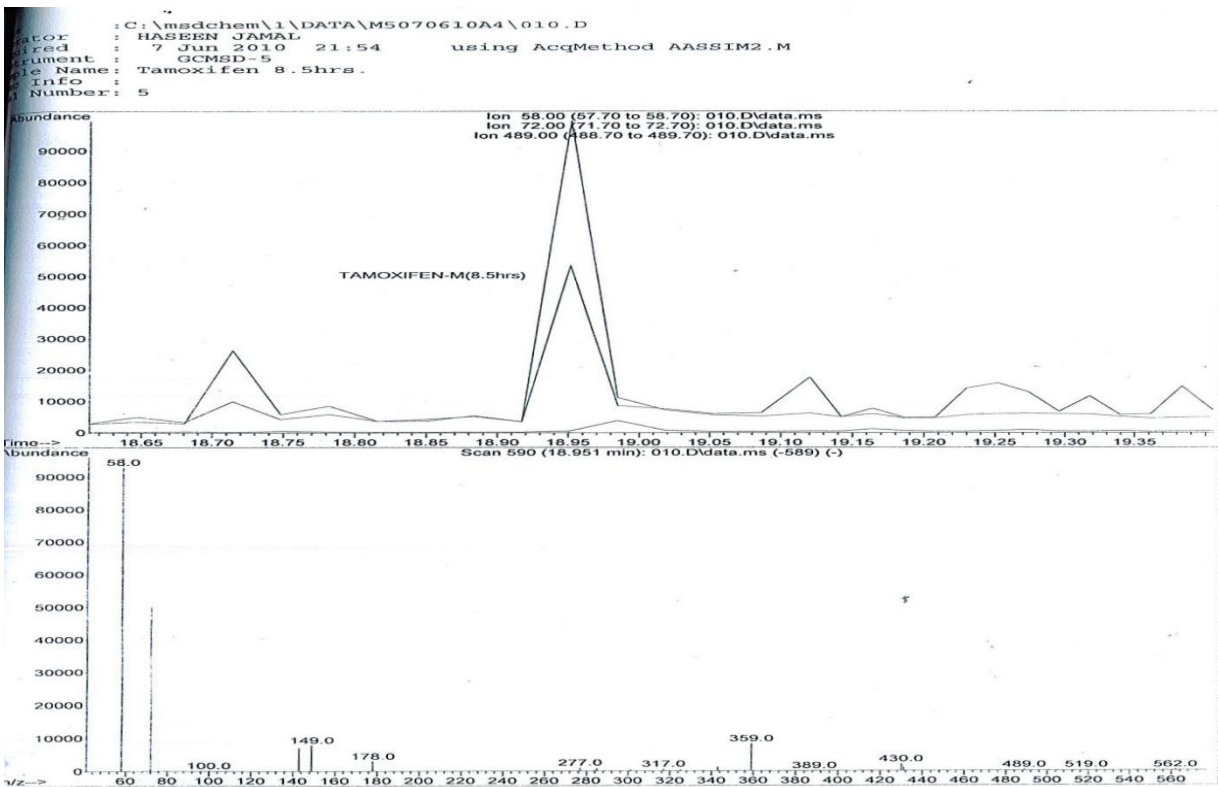


Figure 4c: The extraction ion chromatogram and mass spectrum of 3-hydroxyl-4- methoxy tamoxifen at 8.5hr in targeted GCMS SIM mode .

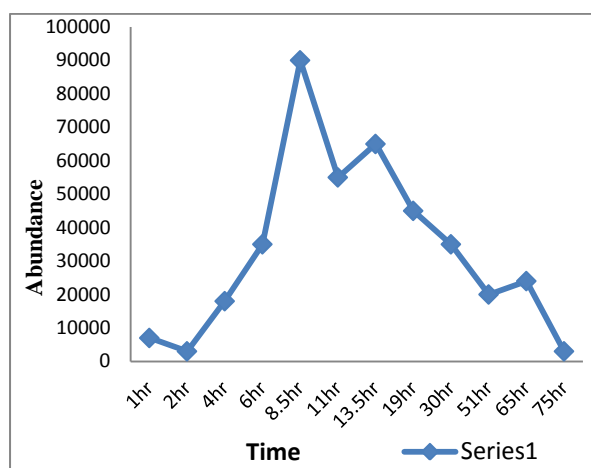


Figure 5: Abundance of Tamoxifen metabolites at different hours.

DISCUSSION

In sports athletes may be encouraged to treat the adverse effect of extensive abuse of anabolic androgenic steroid (suppression of androgen and gynecomastia) by using anti-estrogen drug. Tamoxifen is prohibited in males because in male the anti-estrogen substance may cause and increase the endogenous production of androgen. Although Tamoxifen is beneficial in Breast Cancer therapy, it is a banned categorize drug in sports by the World Anti Doping Agency due to their adverse effect.

REFERENCES:

1. Brito, Dayamin... et. all, Excretion study of clomiphene in human urine: evaluation of endogenous steroids profile after multiple oral doses, *Journal of the Brazilian Chemical Society*, 2010, 21 (12), 2220-2225.
2. Lu J... et al, Structural elucidation of new urinary tamoxifen metabolites by liquid chromatography quadrupole time-of-flight mass spectrometry, *Journal of Mass Spectrometry*, 2014, 47, (7), 570-78.
3. Jordan, V. C. and Jaspan, T., Tamoxifen as an anti-tumour agent: oestrogen binding as a predictive test for tumour response, *Journal of Endocrinology*, 1976, 68 (3) 453-460.
4. Rickert, EL... et all, Synthesis and Characterization of Bioactive Tamoxifen-Conjugated Polymers. *Biomacromolecules*, 2007, 8 (11), 3608-3612.
5. Kisanga ER, Mellgren G, Lien EA., Excretion of hydroxylated metabolites of tamoxifen in human bile and urine, *Anticancer Research*. 2005 Nov-Dec; 25(6C),4487-92.
6. Mihailescu R, Aboul-Enein H Y. and Efstatiade M.D., "Identification of Tamoxifen and Metabolites in Human Male Urine by GC/MS, *Biomedical Chromatography*, 14, no. 3 (2000): 180-83.
7. Baez, H., C. Camargo, H. Osorio, and F. Umpierrez. "Detection of Tamoxifen Metabolites by GC-MSD." *Journal of Chromatographic Science* 42, no. 10 (2004): 551-53.
8. Beotra A. *Drug Abuse in Sports*. 7th ed. Inde, 2001. P.5-35.
9. *Drug Today, Metabolism* "Carcinoma chemotherapeutic Drug" Tamoxifen citrate. jan-mar: 2010, vol-2nd, P.1109.
10. (n.d.). Retrieved January 11, 2016, from https://en.wikipedia.org/wiki/Anabolic_steroid, urine by GC/M

Tamoxifen is rapidly hydrolyzed in to their metabolite, after oral administration and these metabolites can be detected by the urinary excretion study up to 5 days.

CONCLUSION

Tamoxifen is an anti-estrogenic substance, which basically binds to estrogen receptor for blocking unwanted effect of estrogen¹⁰. These drugs are able to reduce gynecomastia and enhance testosterone production. Tamoxifen is quickly metabolized after oral administration into compound that binds to the estrogen receptor but do not activate it. Because of this competitive antagonism, tamoxifen act like a key broken off in the lock that prevents any other key (drug or metabolite) from being inserted, thereby preventing estrogen from binding to its receptor site.

From the present study it is concluded that tamoxifen metabolite started excreting from 1sthr of oral administration and it remains in the body for a maximum period of 5 days which will help in its detection even after the administration of drug is stopped up to 5 days

ACKNOWLEDGMENT

The authors are thankful to the authorities of National Dope Testing Laboratory (NDTL), New Delhi for their support in providing necessary facility for conducting the study.