

2018

# Curating Your Scholarly Identity

Christina Bell

*Bates College*, [cbell@bates.edu](mailto:cbell@bates.edu)

Peter Schlax

*Bates College*, [pschlax2@bates.edu](mailto:pschlax2@bates.edu)

Krystie Wilfong

*Bates College*, [kwilfong@bates.edu](mailto:kwilfong@bates.edu)

Follow this and additional works at: [https://scarab.bates.edu/ils\\_scholarship](https://scarab.bates.edu/ils_scholarship)

---

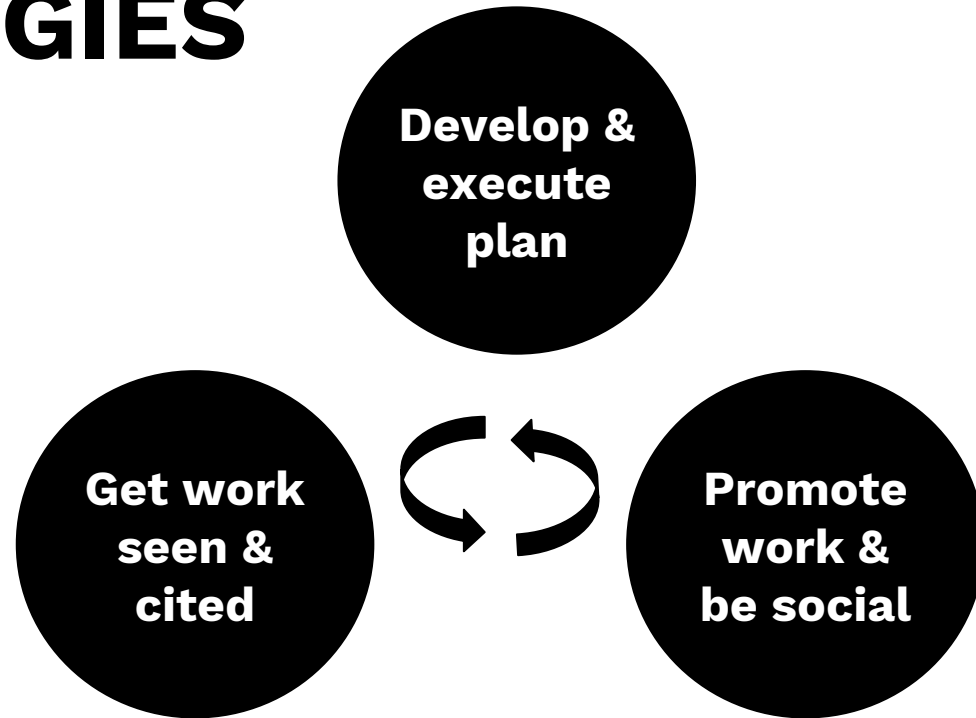
## Recommended Citation

Bell, Christina; Schlax, Peter; and Wilfong, Krystie, "Curating Your Scholarly Identity" (2018). *ILS Scholarship*. 5.  
[https://scarab.bates.edu/ils\\_scholarship/5](https://scarab.bates.edu/ils_scholarship/5)

This Presentation is brought to you for free and open access by the Information and Library Services at SCARAB. It has been accepted for inclusion in ILS Scholarship by an authorized administrator of SCARAB. For more information, please contact [batesscarab@bates.edu](mailto:batesscarab@bates.edu).

**CURATING  
YOUR  
SCHOLARLY  
IDENTITY**

# 3 STRATEGIES



# **Data: Take-home Points**

- **Data ≠ Only Numbers**
- **Useful data require context**
- **You should want credit**
- **There are people at Bates who can help**

# “Data” = Products of Scholarship

## Photographs and Scans



By Shadsluiter [CC BY-SA 4.0 from Wikimedia Commons]

## Interviews: A/V and Transcripts



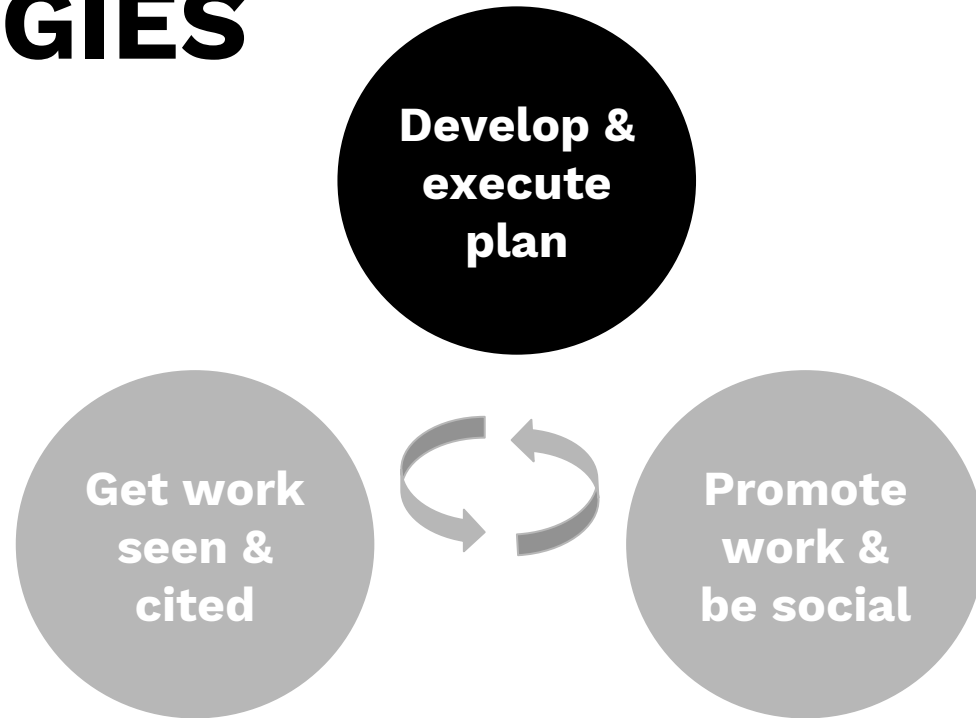
World Economic Forum [CC BY-SA 2.0 by Wikimedia Commons]

## Physical Samples



By USDA NRCS Montana (Soil Survey45.tif) [Public domain] from Wikimedia Commons

# 3 STRATEGIES



# Data Management Plans: NSF

## NSF DATA MANAGEMENT PLAN REQUIREMENTS

---

Proposals submitted or due on or after January 18, 2011, must include a supplementary document of no more than two pages labeled "Data Management Plan". This supplementary document should describe how the proposal will conform to NSF policy on the dissemination and sharing of research results. See PAPPG Chapter II.C.2.j for full policy implementation.

---

<https://www.nsf.gov/bfa/dias/policy/dmp.jsp>

# DMPs: Important Goals



Discover



Reuse



Repurpose



# **DMPs: Important Considerations**

**Where?**

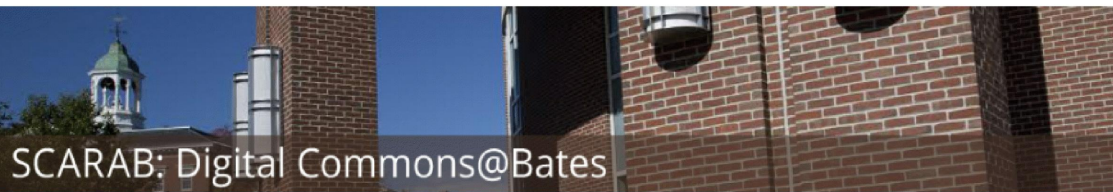
**How?**

**For How  
Long?**



# **We Can Help!**

- **Joseph Tomaras**
- **Theresa Bishop**
- **Pete Schlax**
- **Michael Hanrahan**



## Search

Enter search terms:

in this collection ▾

[Advanced Search](#)

Notify me via email or [RSS](#)

## Browse

[Collections](#)

[Authors](#)

## Author Corner

[FAQ](#)

[Home](#) > [SCARAB Data Repository](#) > 1

## SCARAB DATA REPOSITORY

### Dichotomous Key to Pea Aphid (*Acyrtosiphon pisum*) Apterous Parthenogenic Instars



#### Collaborator(s)

Bates College Department of Biology

Daisy Diamond, Class of 2019

Daniel Levitis, PhD, Visiting Assistant Professor of Biology



#### OPEN ACCESS

Available to all.

**349 DOWNLOADS**

Since July 19, 2018

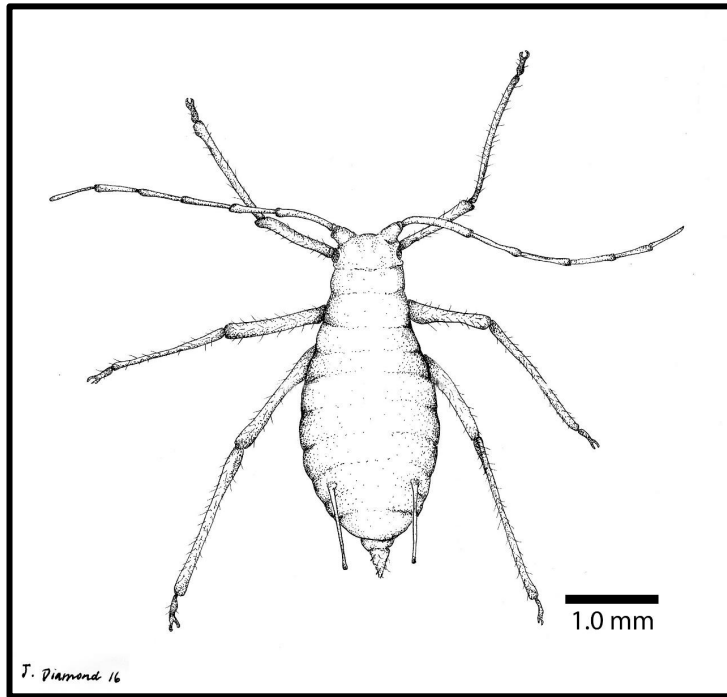
#### Abstract

We provide a dichotomous key, with photographs and illustrations, for distinguishing between instars of the pea aphid (*Acyrtosiphon pisum*) in the developmental pathway leading to the apterous parthenogenetic adult. Lengths of body, antenna and cauda are provided for a sample of each instar.

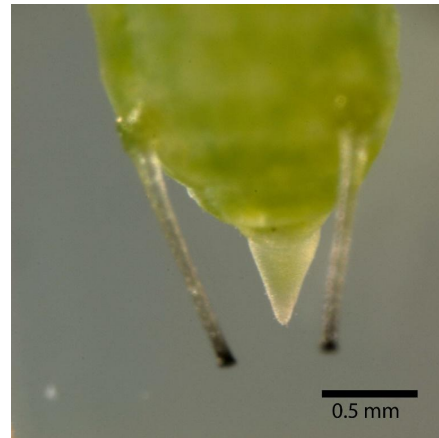
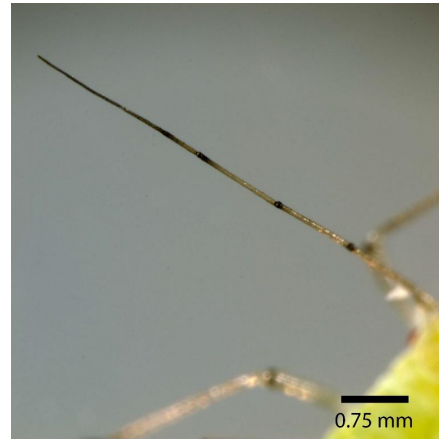
#### Additional Information

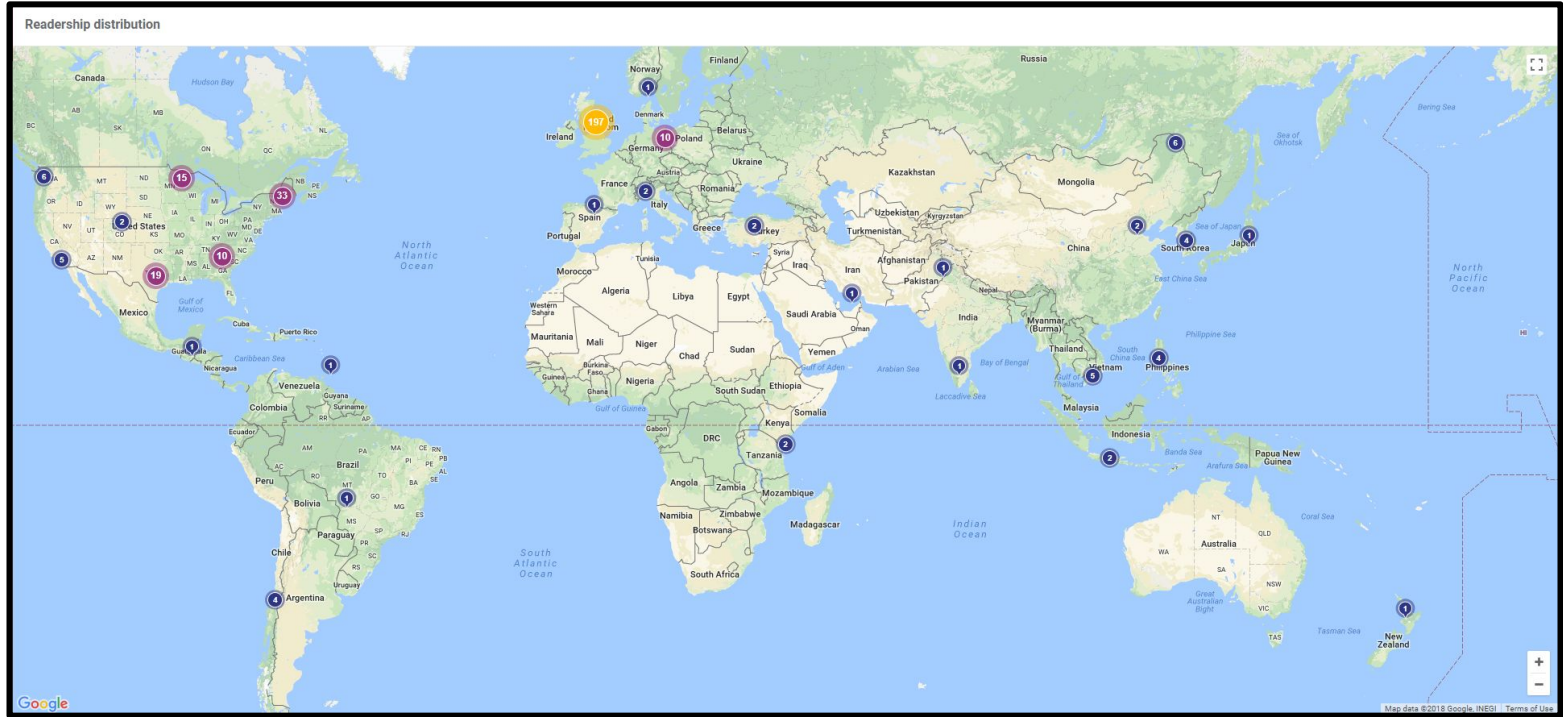
**Primary Download:** A PDF file containing a dichotomous key consisting of original line drawings, photomicrographs, and descriptions of the peas aphid apterous parthenogenetic instars.

<https://scarab.bates.edu/datasets/1/>



Bates College Department of Biology. Diamond, Daisy and Levitis, Daniel. "Dichotomous Key to Pea Aphid (*Acyrtosiphon pisum*) Apterous Parthenogenetic Instars" (2016). SCARAB Data Repository. <https://scarab.bates.edu/datasets/1>







## SCARAB

Showing:

Mar 31, 2010 - May 16, 2018

Works:

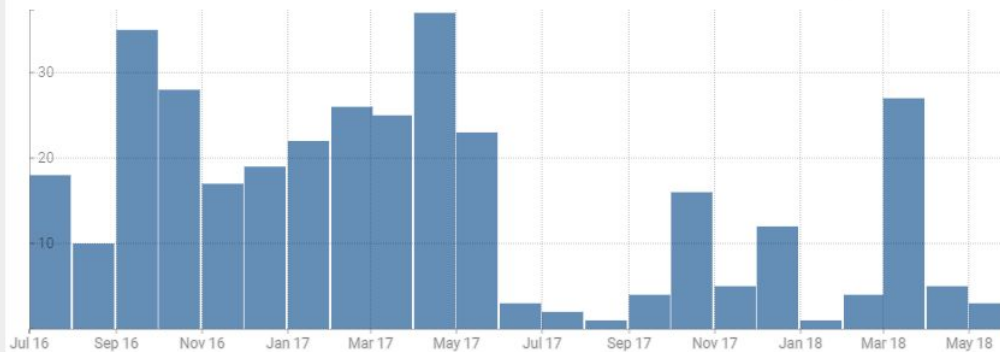
Include collected content

Filters

**343** Downloads

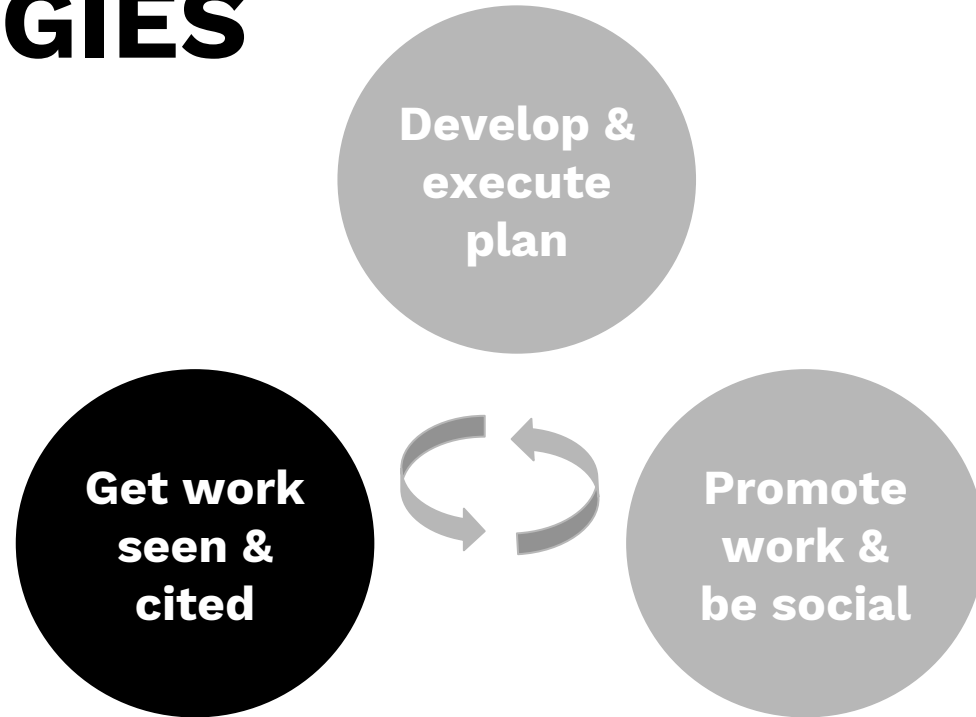
Generate Report

Include additional files



All Time: 07/19/2016 to 05/16/2018

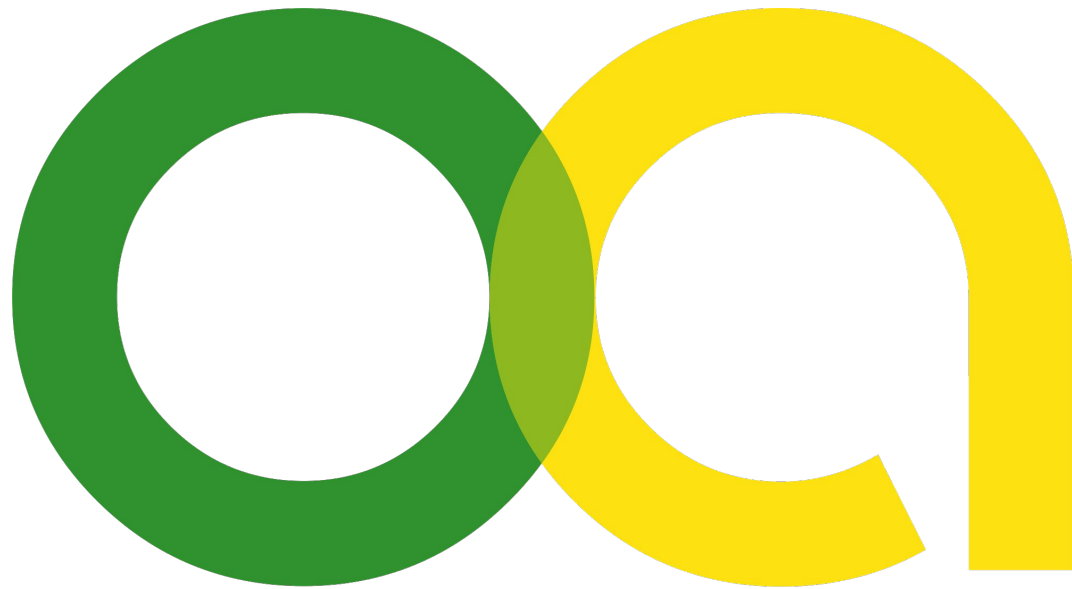
# 3 STRATEGIES



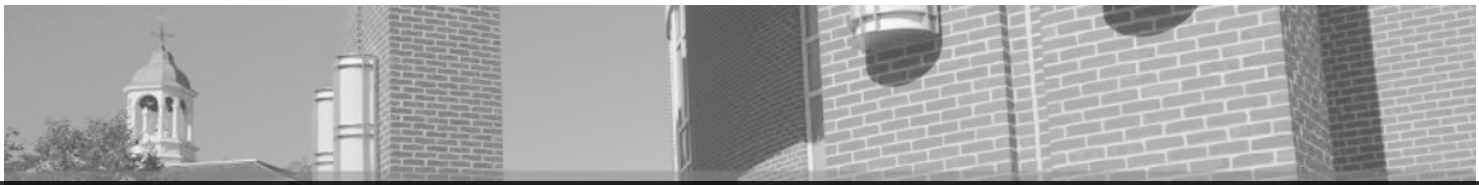




*If you were thinking about collaborating with a new colleague, how would you learn more about them?*



**open access**



SCARAB: Digital Commons@Bates

# SCARAB

Home About FAQ My Account

## Search

Enter search terms:

in this repository

Advanced Search

Library

Bates

## Browse

Collections

Authors

## About SCARAB

SCARAB (Scholarly Communication and Research at Bates) is the institutional repository for scholarly and creative works produced by faculty, students, and staff. SCARAB has a dual role in both promoting access to the college's scholarly output and ensuring the long-term preservation of that output. For more information, please contact the Digital Commons Services.

## Browse the Collections

All Collections

Reader from: Kathmandu, Bagmati, Nepal

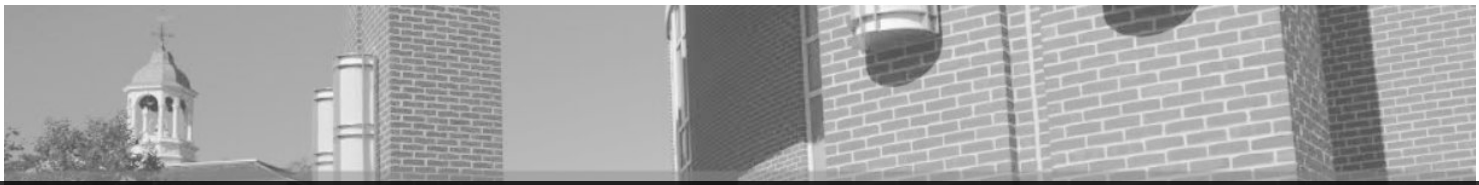
Constitutional Assembly Breakdown: A Study of Why Nepal's Constitution Writing Proces...

Evan Cooper

Honors Theses



- Scholarly Communications and Research at Bates
- More than just student works
- Repository for Green Open Access
- Goal: promote access to scholarly outputs of institution and ensure long-term preservation



SCARAB: Digital Commons@Bates

# SCARAB: the benefits

Home About FAQ My Account

## About SCARAB

- Increased visibility
  - Unpublished works inc: posters, conference presentations, data, etc.

- Permanent URLs
- Statistics
- Permissions expertise

## Browse the Collections

- All Collections
- Honors Theses

## Browse

- Collections
- Authors

Reader from: Kathmandu, Bagmati, Nepal

Constitutional Assembly Breakdown: A Study of Why Nepal's Constitution Writing Proces...  
 Evan Cooper  
 Honors Theses



# READ YOUR CONTRACT S





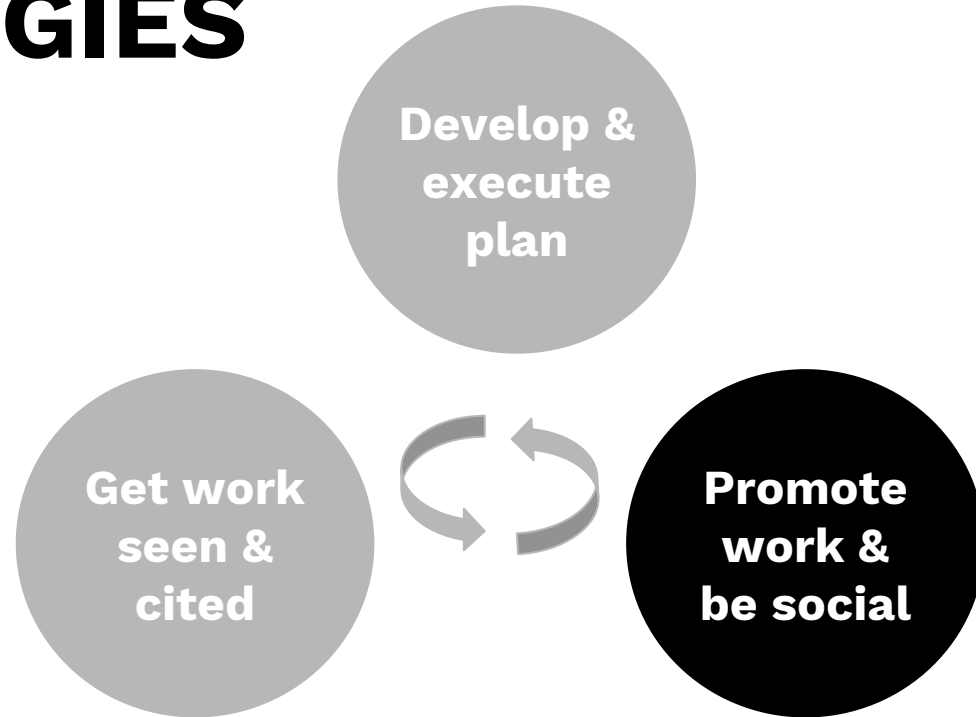
Cambridge  
Core Share

Cambridge Core Share, making responsible sharing easy.

ORCID

Google  
Scholar

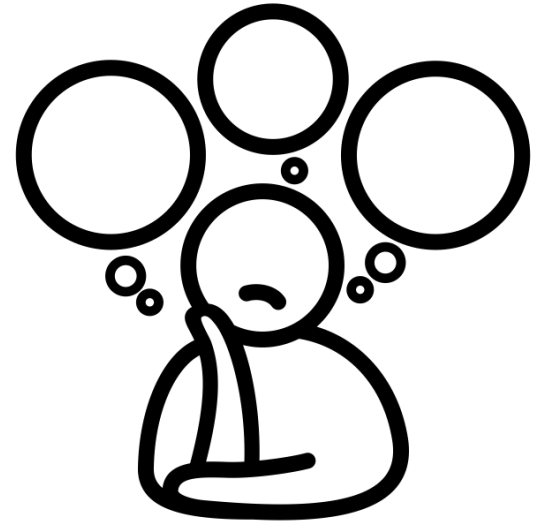
# 3 STRATEGIES





# Considerations:

- Who can access my work?
- Will I receive a permanent link or DOI?
- Does the platform comply with US copyright law?
- Will I get download statistics for my work?
- Are there limits on file types or sizes?
- Will search engines find my work?
- Will my work be preserved for long-term access?
- Will depositing my work comply with government or funder requirements?



Created by Hyemm.work  
from Noun Project

# ACADEMIC SOCIAL NETWORKS



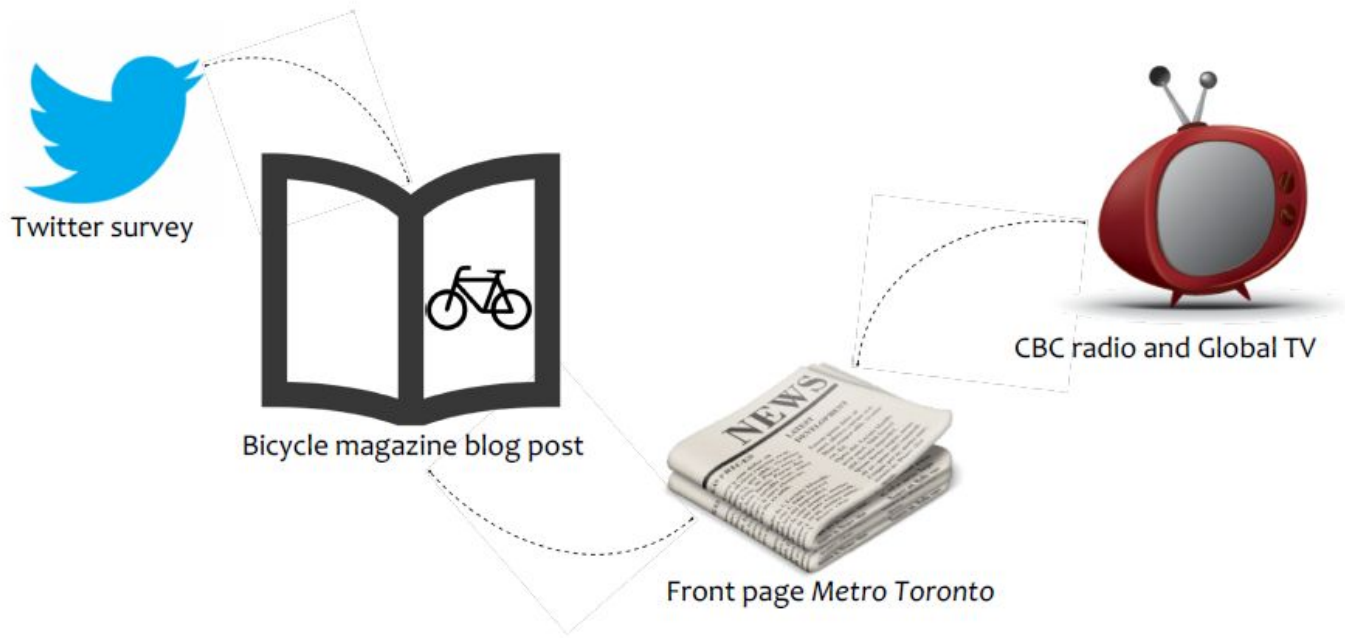
ResearchGate

Academia.edu

Others?

	Open access repositories	Academia.edu	ResearchGate
Supports export or harvesting	Yes	No	No
Long-term preservation	Yes	No	No
Business model	Nonprofit (usually)	Commercial. Sells job posting services, hopes to sell data	Commercial. Sells ads, job posting services
Sends you lots of emails (by default)	No	Yes	Yes
Wants your address book	No	Yes	Yes
Fulfills requirements of UC's OA policies	Yes	No	No

 <http://creativecommons.org/licenses/by/4.0/> University of California OSC



Hatzopolou research on impact of air pollution on behavior of cyclists

# CONTACT US:

- Pete Schlax, [pschlax2@bates.edu](mailto:pschlax2@bates.edu)
- Christina Bell, [cbell@bates.edu](mailto:cbell@bates.edu), @librarybell
- Krystie Wilfong, [kwilfong@bates.edu](mailto:kwilfong@bates.edu)

Want more information?

- <https://libguides.bates.edu/scholarly-communications>
- [www.scarab.bates.edu](http://www.scarab.bates.edu)
- [https://scarab.bates.edu/ils\\_scholarship/5/](https://scarab.bates.edu/ils_scholarship/5/) (these slides)