

2-27-2017

## Color Historic Buffalo

Josh Rakower M.E., M.L.S.  
*SUNY Buffalo State*

Follow this and additional works at: <http://digitalcommons.buffalostate.edu/bookcase>



Part of the [Education Commons](#), and the [History Commons](#)

---

### Recommended Citation

Rakower, Josh M.E., M.L.S., "Color Historic Buffalo" (2017). *Butler Bookcase*. 7.  
<http://digitalcommons.buffalostate.edu/bookcase/7>

This Book is brought to you for free and open access by the E. H. Butler Library at Digital Commons at Buffalo State. It has been accepted for inclusion in Butler Bookcase by an authorized administrator of Digital Commons at Buffalo State. For more information, please contact [digitalcommons@buffalostate.edu](mailto:digitalcommons@buffalostate.edu).

---

# COLOR HISTORIC BUFFALO

---



By Josh Rakower

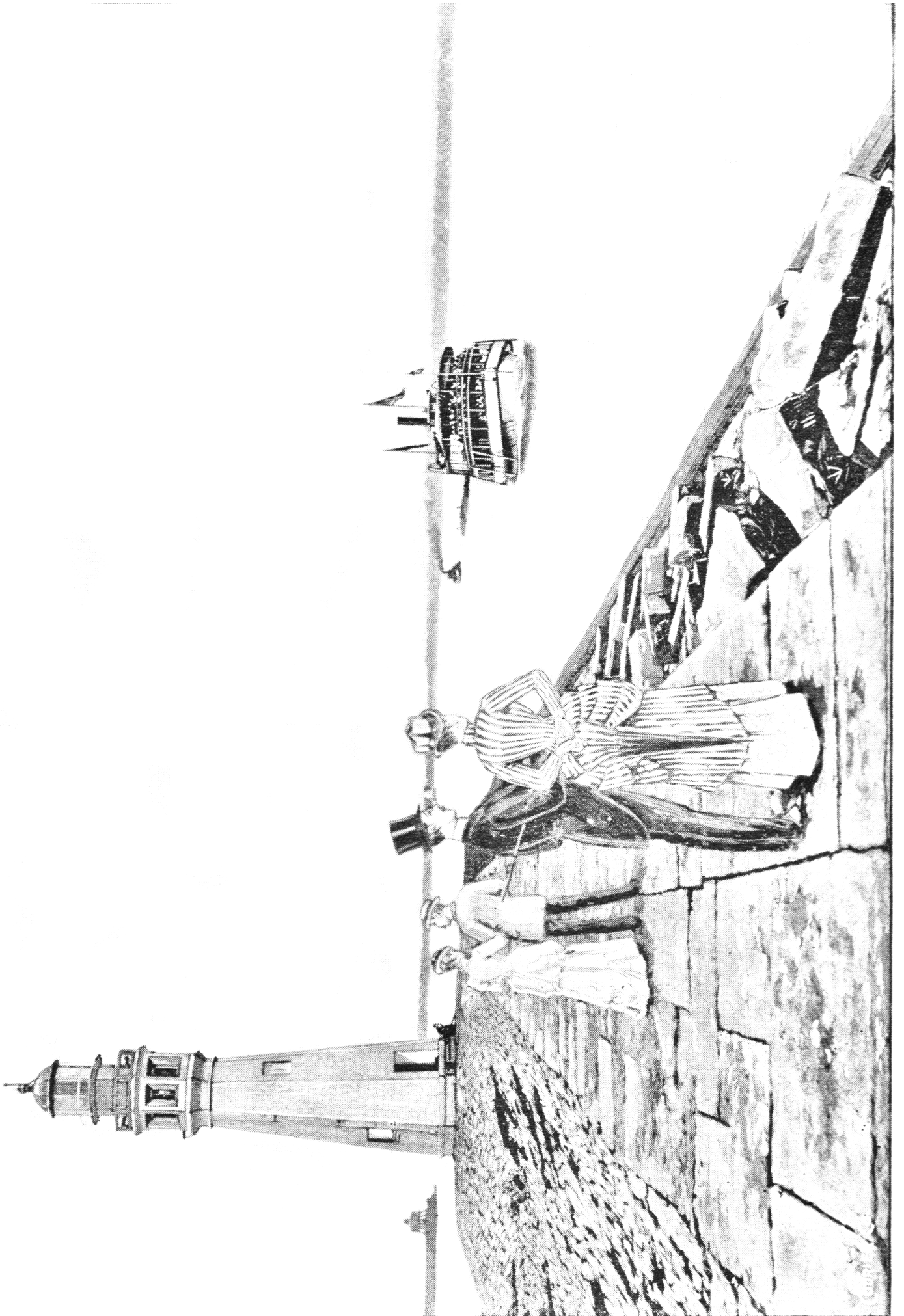
All of the illustrations in this coloring book are adapted from the book *Buffalo Illustrated: Commerce, Trade and Industries of Buffalo*, published in 1890 by Anderson & Gillette and the Courier Printing Company. The copy used to create this book as well as many other wonderful items can be found in the SUNY Buffalo State College Archives and Special Collections. More information about Buffalo State's Archives and Special Collections can be found at: <http://library.buffalostate.edu/archives>.

Special Thanks to:

SUNY Buffalo State College Archives and Special Collections  
E. H. Butler Library, SUNY Buffalo State  
Hope Dunbar, M.L.I.S., J.D., Archivist  
Leah Galka, M.S.L.I.S., Outreach & Engagement Librarian



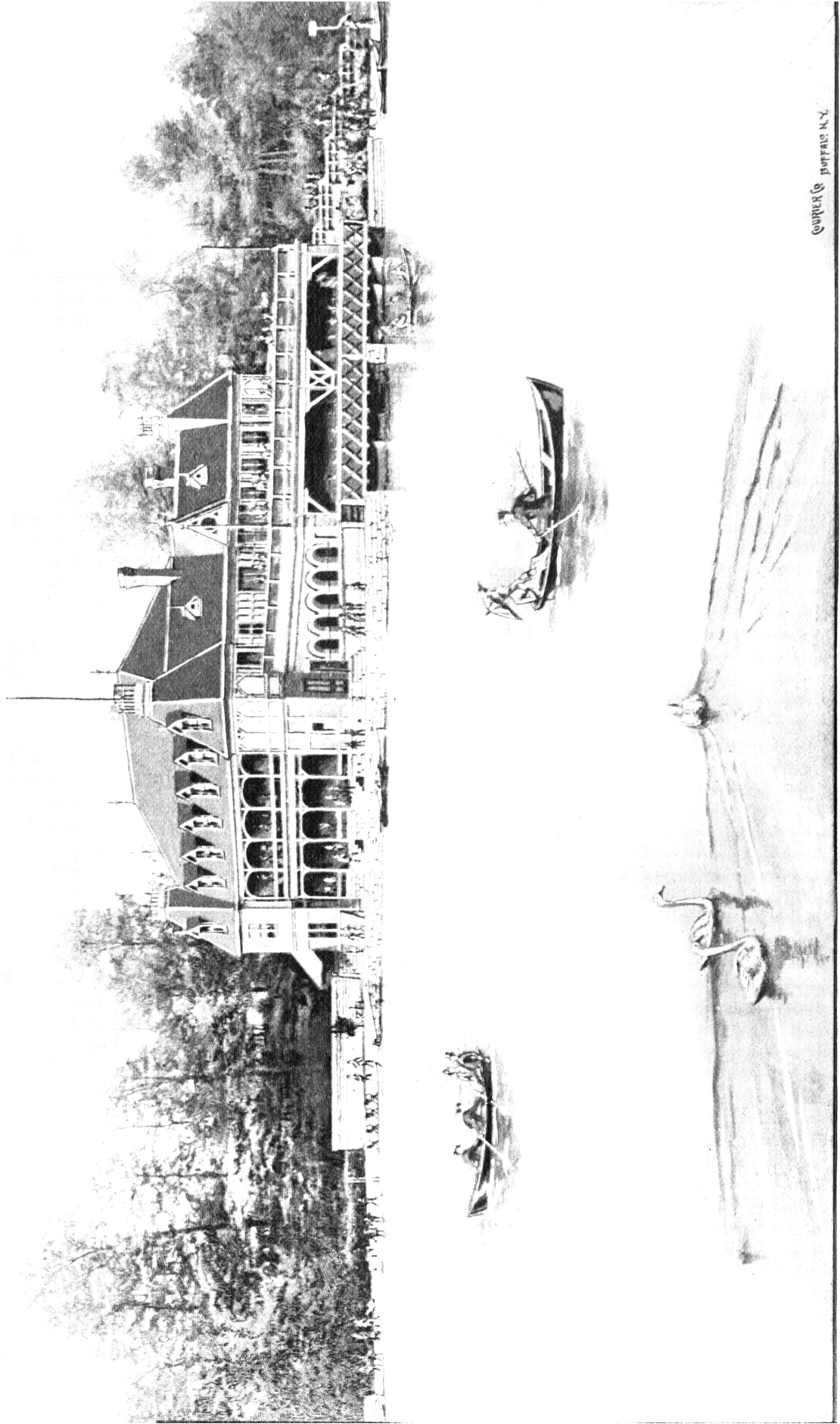
This work is licensed under a  
[Creative Commons Attribution 4.0 International License](https://creativecommons.org/licenses/by/4.0/).



THE LIGHTHOUSE PIER.

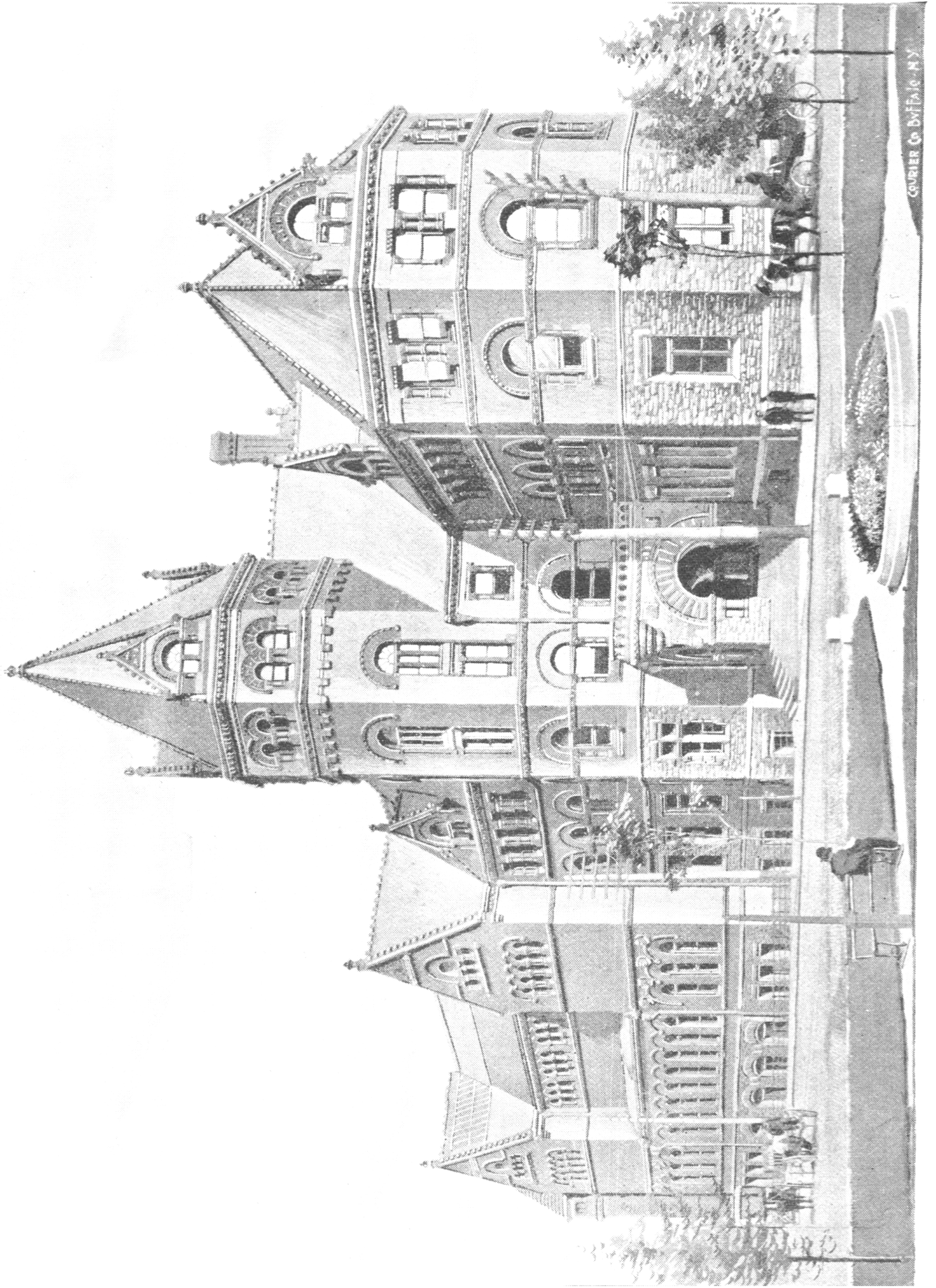


CITY AND COUNTY HALL.



COURT & BUFFALO, N.Y.

THE PARK LAKE AND BOATHOUSE.

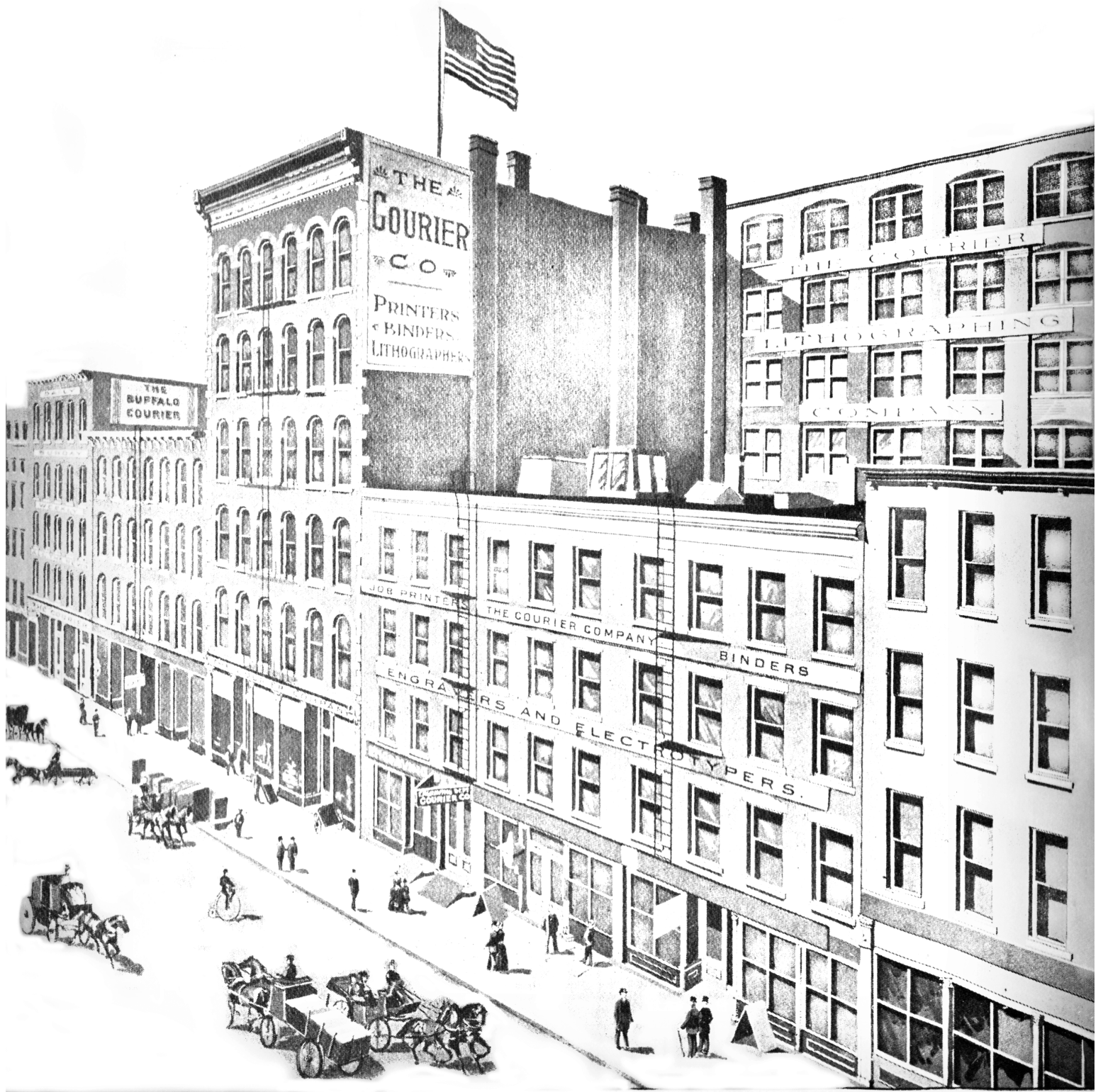


BUFFALO LIBRARY.

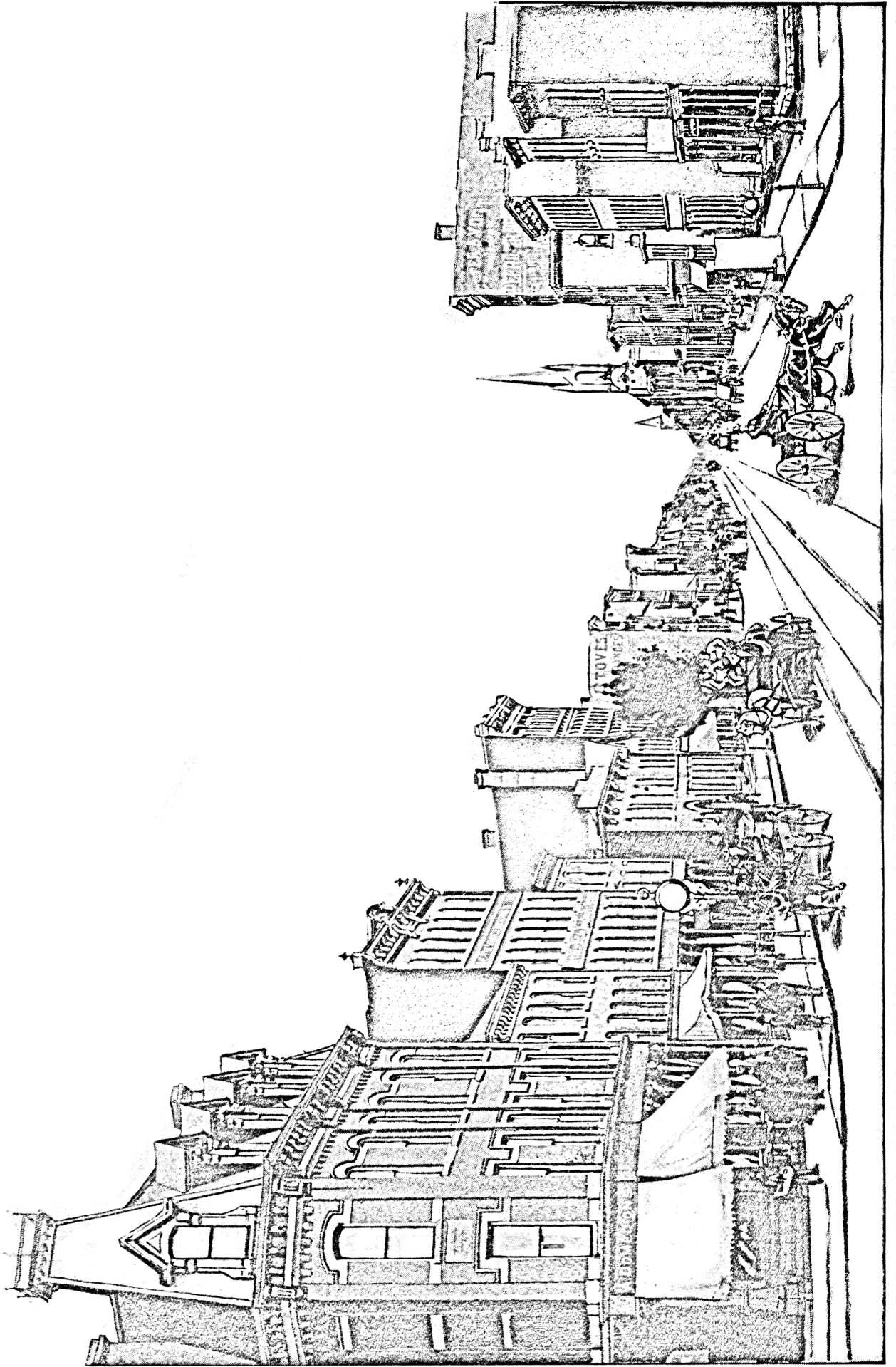


THE COURIER COMPANY, 197-199 MAIN STREET.





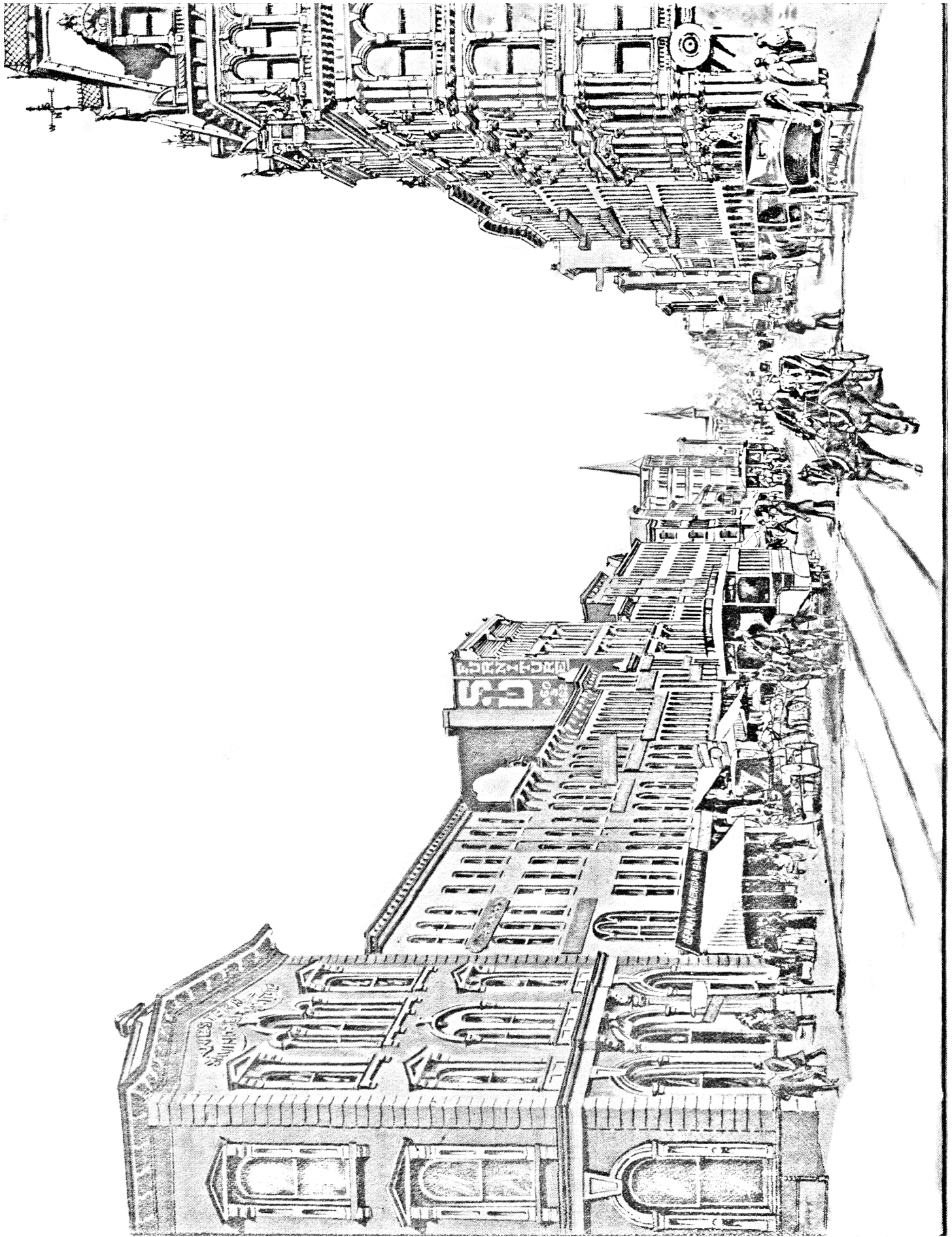
THE COURIER COMPANY, 188, 190 AND 202-216 WASHINGTON STREET.



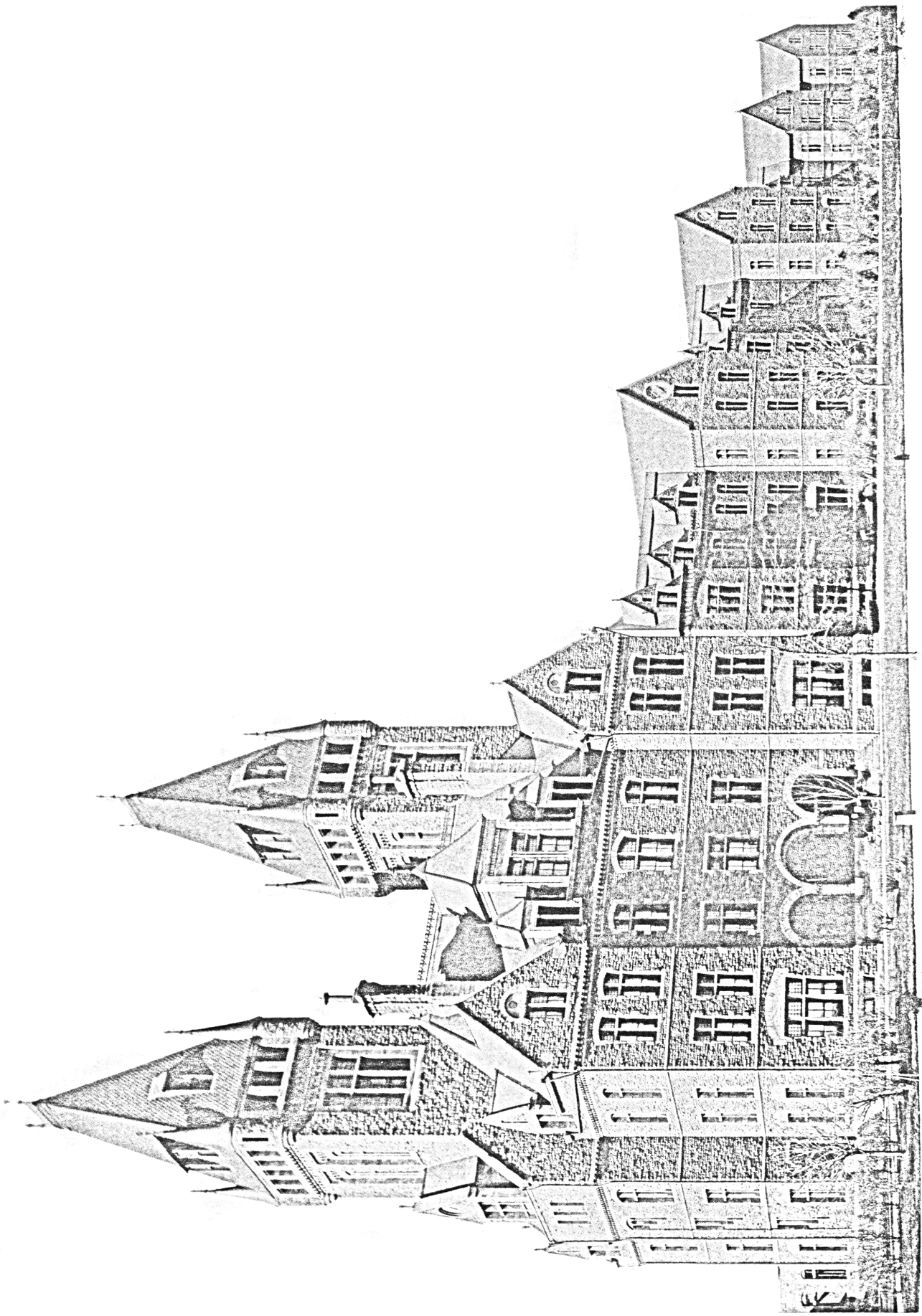
LOOKING DOWN BROADWAY.



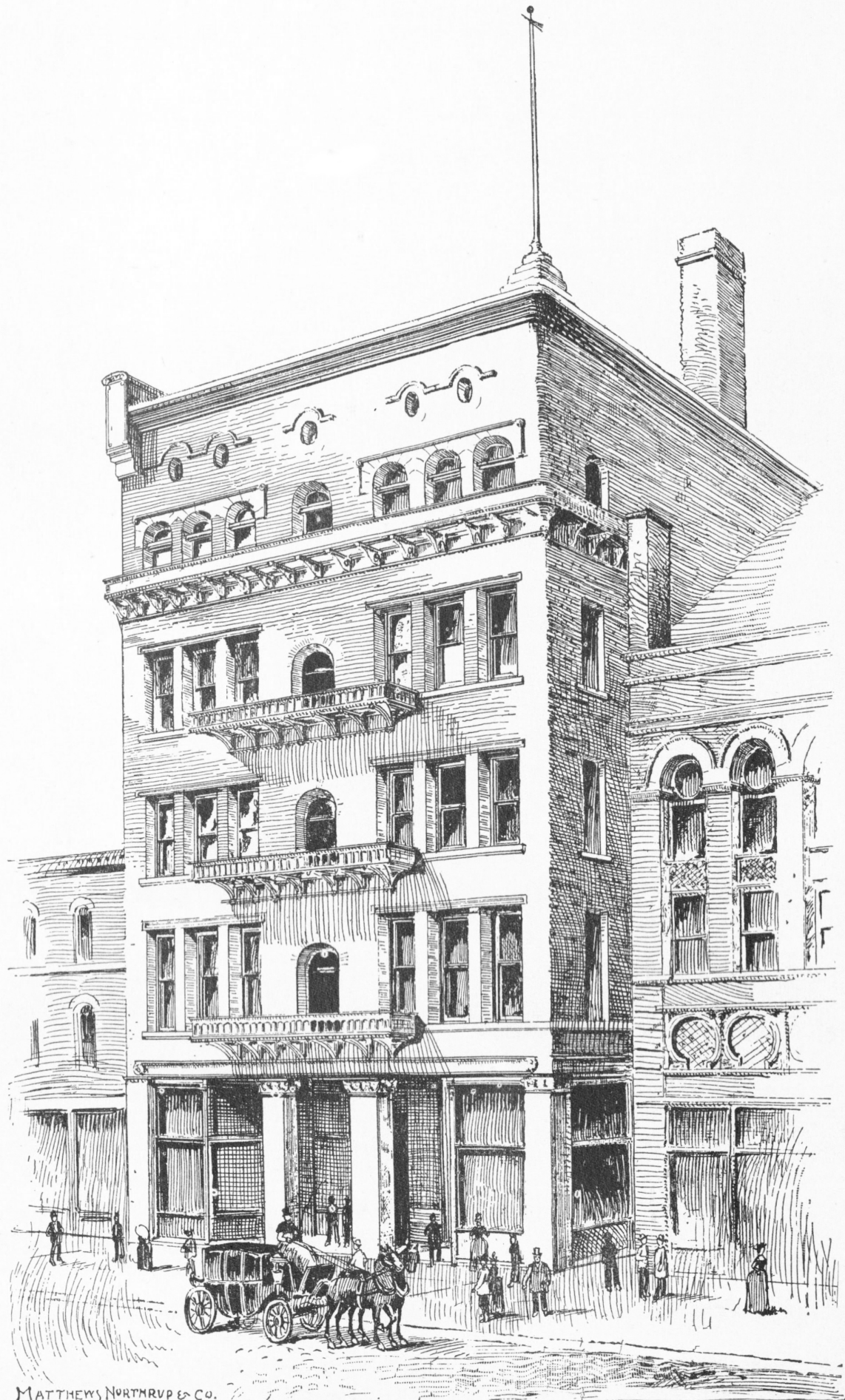
MERCHANTS' EXCHANGE; BOARD OF TRADE BUILDING.



MAIN STREET, LOOKING NORTH FROM LAFAYETTE SQUARE.

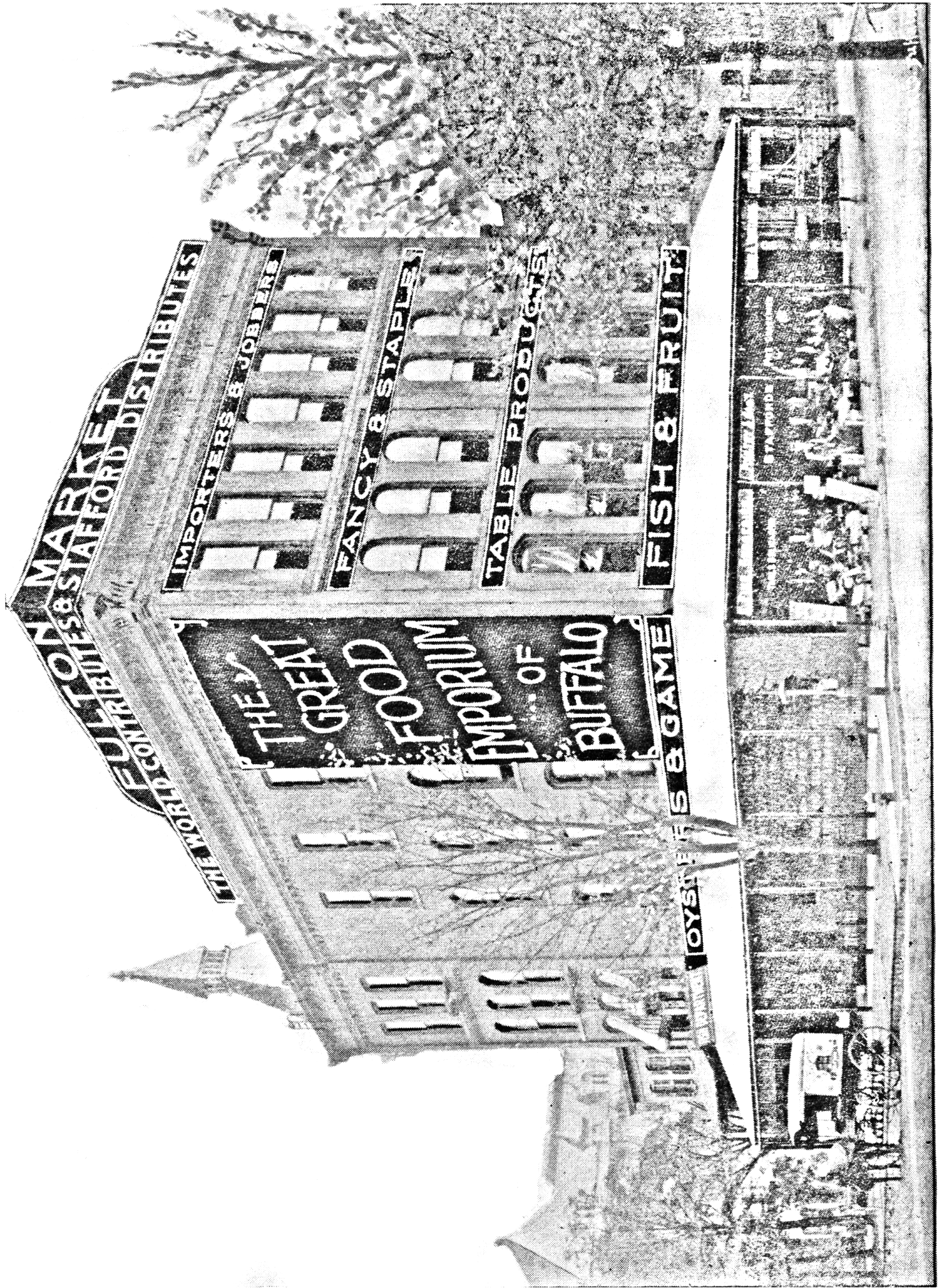


STATE INSANE ASYLUM.

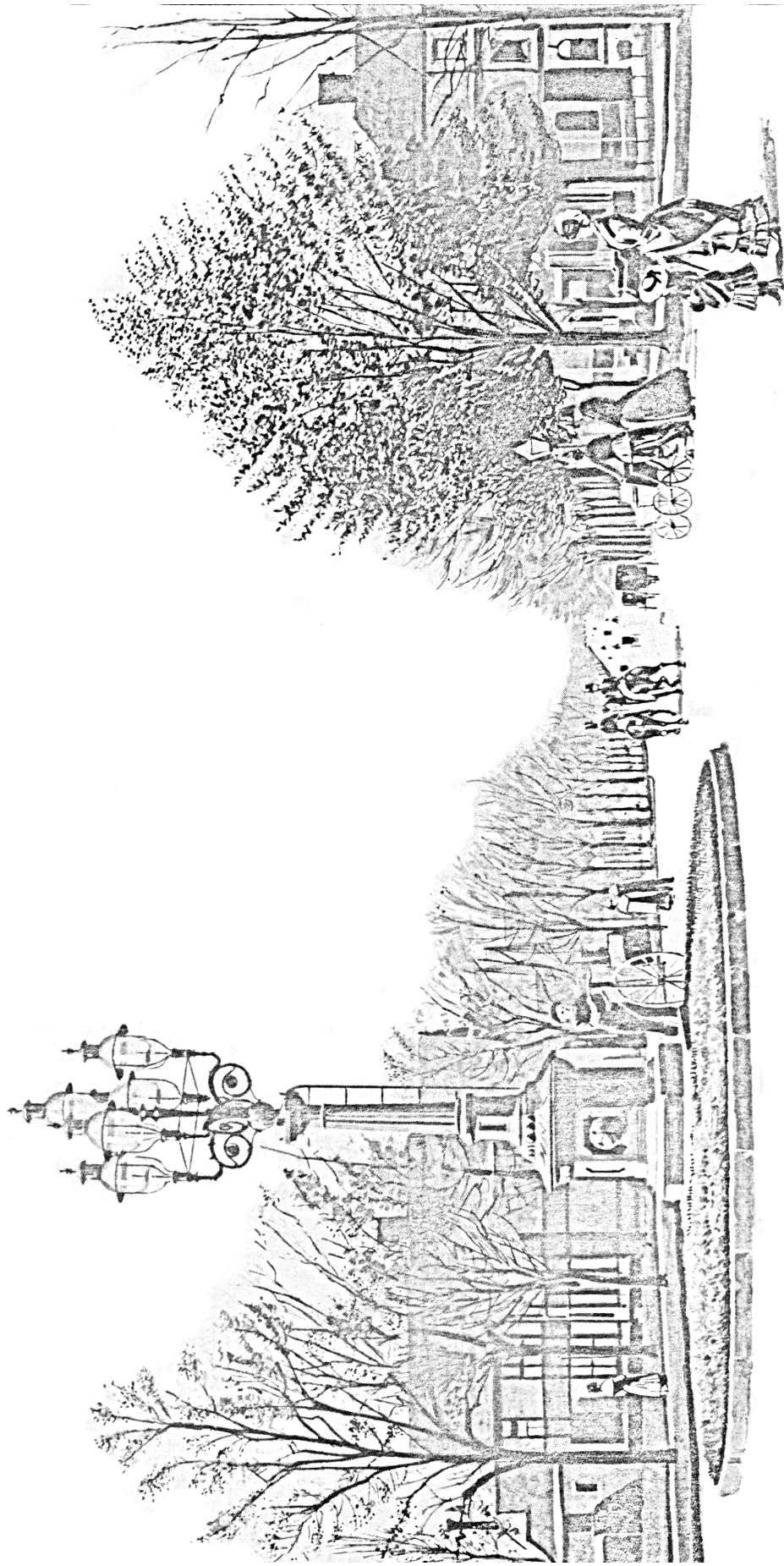


MATTHEW J. NORTHROP & CO.

THE HARDWICKE & WARE MANUFACTURING COMPANY.

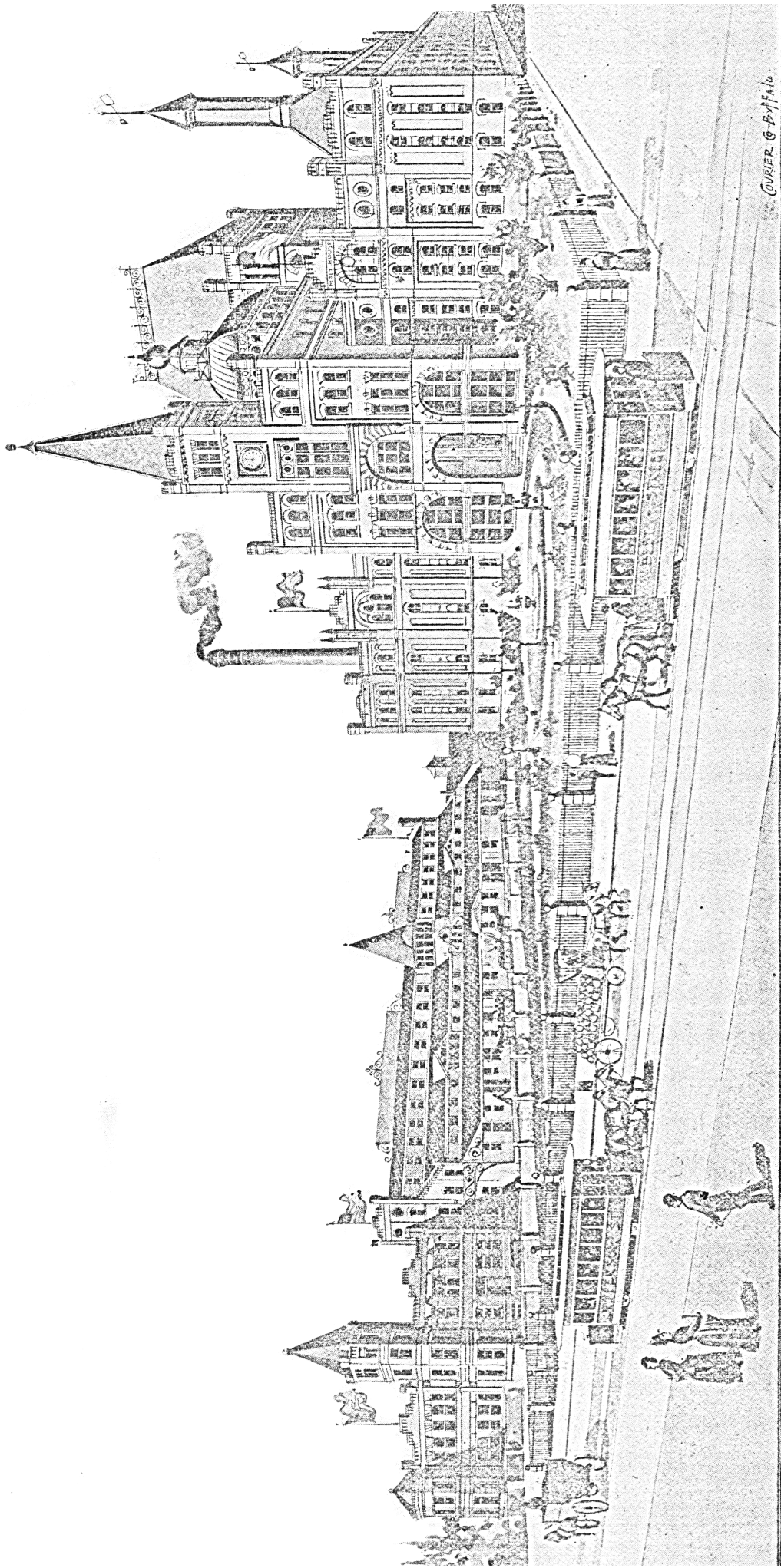


STAFFORD'S FULTON MARKET, CORNER CHURCH AND PEARL STREETS.



THE CIRCLE, LOOKING DOWN RICHMOND AVENUE.





GERHARD LANG'S PARK BREWERY.

COURIER & BUFFALO



TUCKER BUILDING.