

4-2-2010

A Comprehensive Recreation Plan for South Pond Preserve, Buckfield, ME, 04220

Russell MilHolland
Bates College

Follow this and additional works at: http://scarab.bates.edu/mapping_gis

Recommended Citation

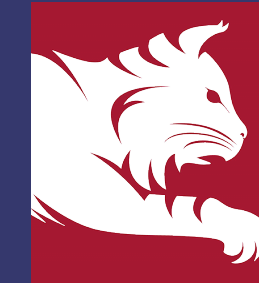
MilHolland, Russell, "A Comprehensive Recreation Plan for South Pond Preserve, Buckfield, ME, 04220" (2010). *Mapping and GIS*. 11.
http://scarab.bates.edu/mapping_gis/11

This Article is brought to you for free and open access by the Environmental Studies at SCARAB. It has been accepted for inclusion in Mapping and GIS by an authorized administrator of SCARAB. For more information, please contact batesscarab@bates.edu.

A Comprehensive Recreation Plan for South Pond Preserve, Buckfield, ME, 04220



Rusty Milholland '10
Environmental Studies Department
Bates College
Lewiston, ME, 04240

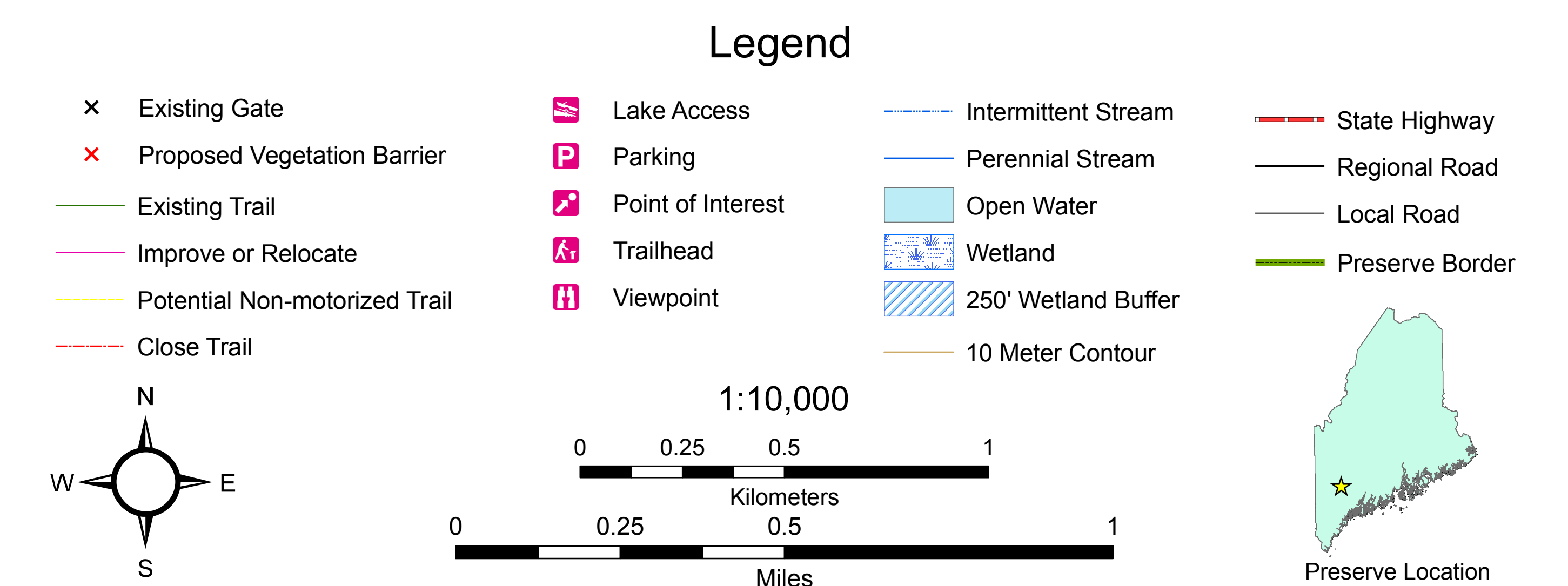
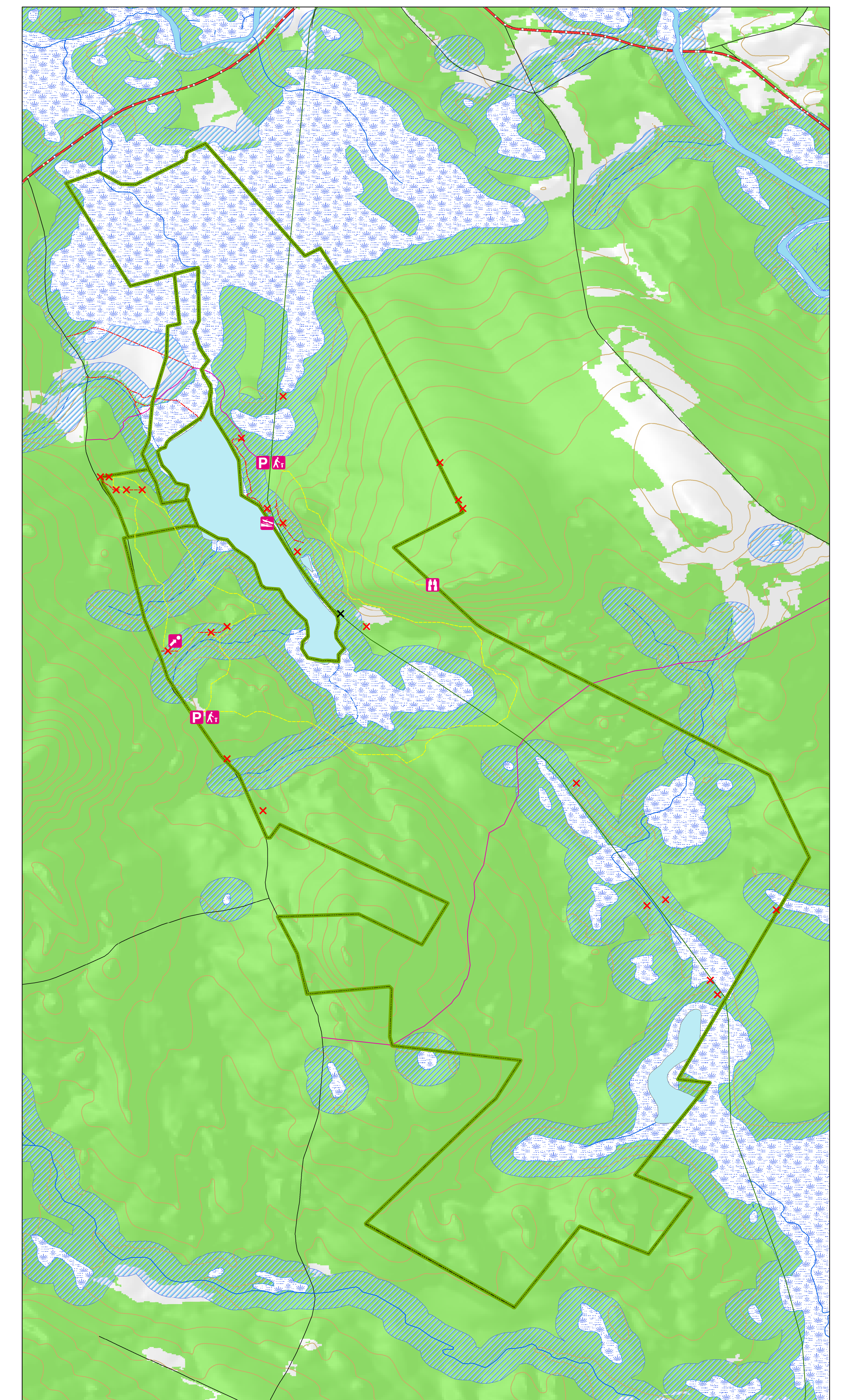


Objectives

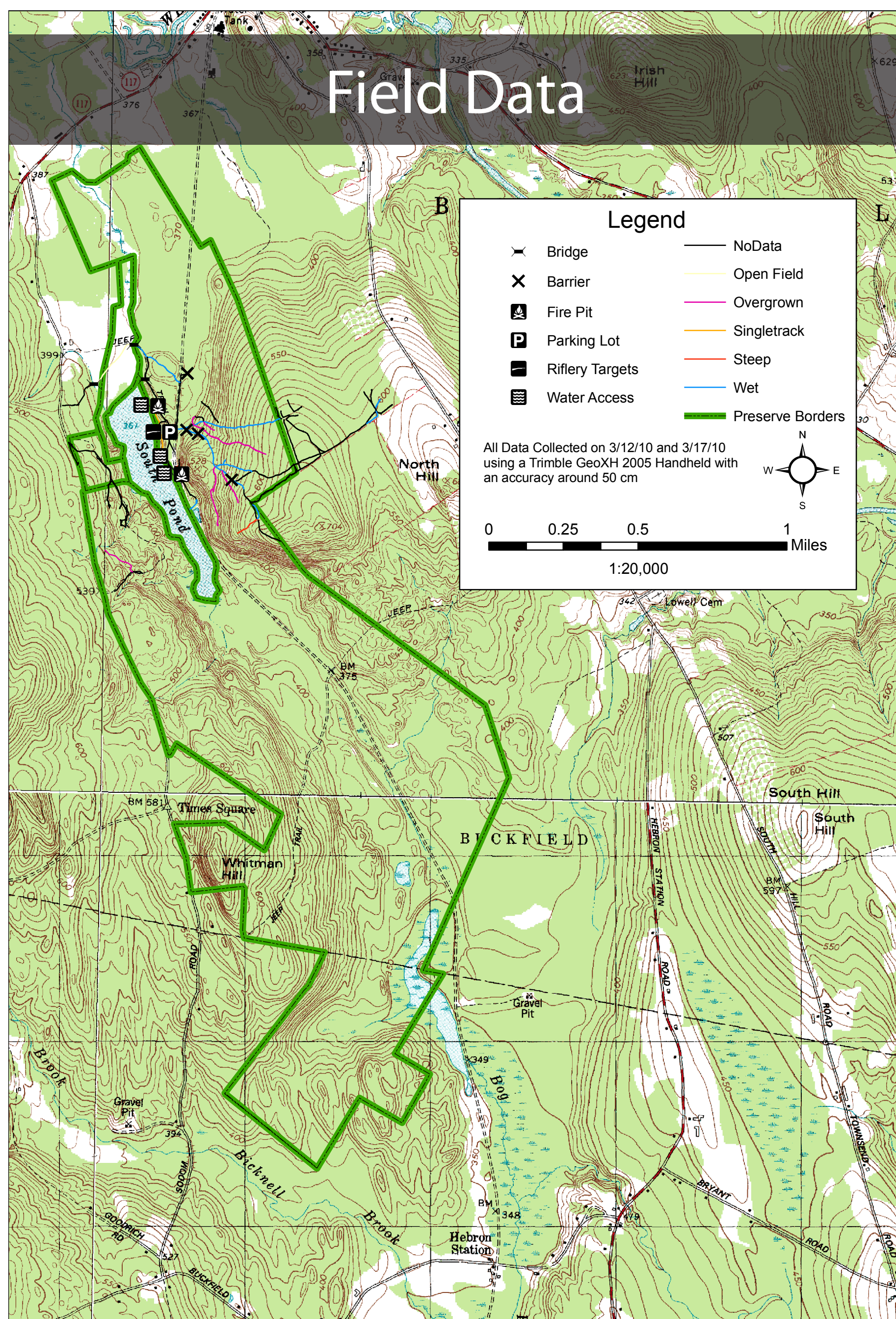
- To compile existing ArcGIS and historical data on the South Pond Preserve
- To collect field data about the extent and condition of the existing trail system
- To create maps with ArcGIS which could inform further recreational planning
- To make recommendations to the Western Foothills Land Trust about recreational management in the Preserve



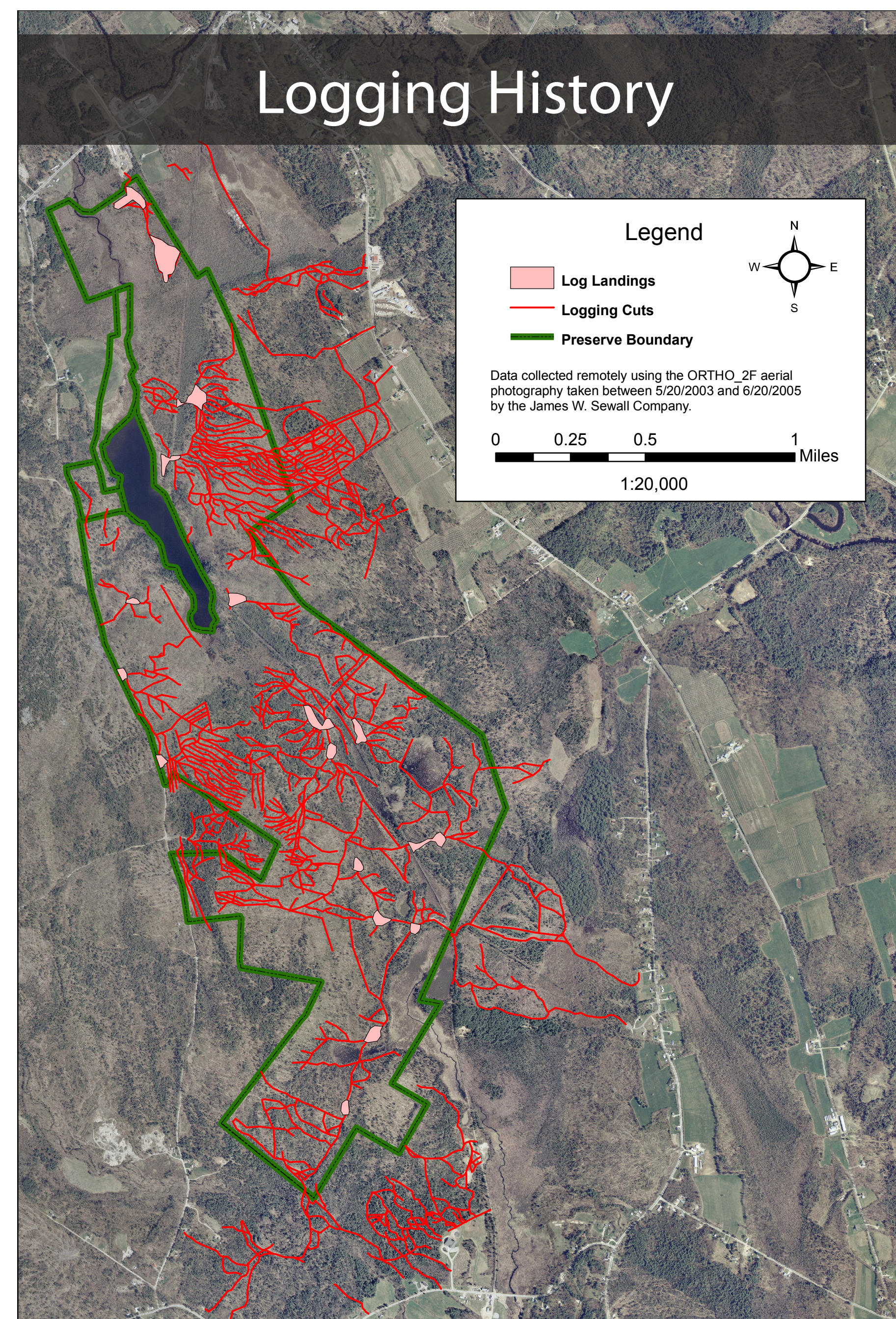
Recreation Management Recommendations



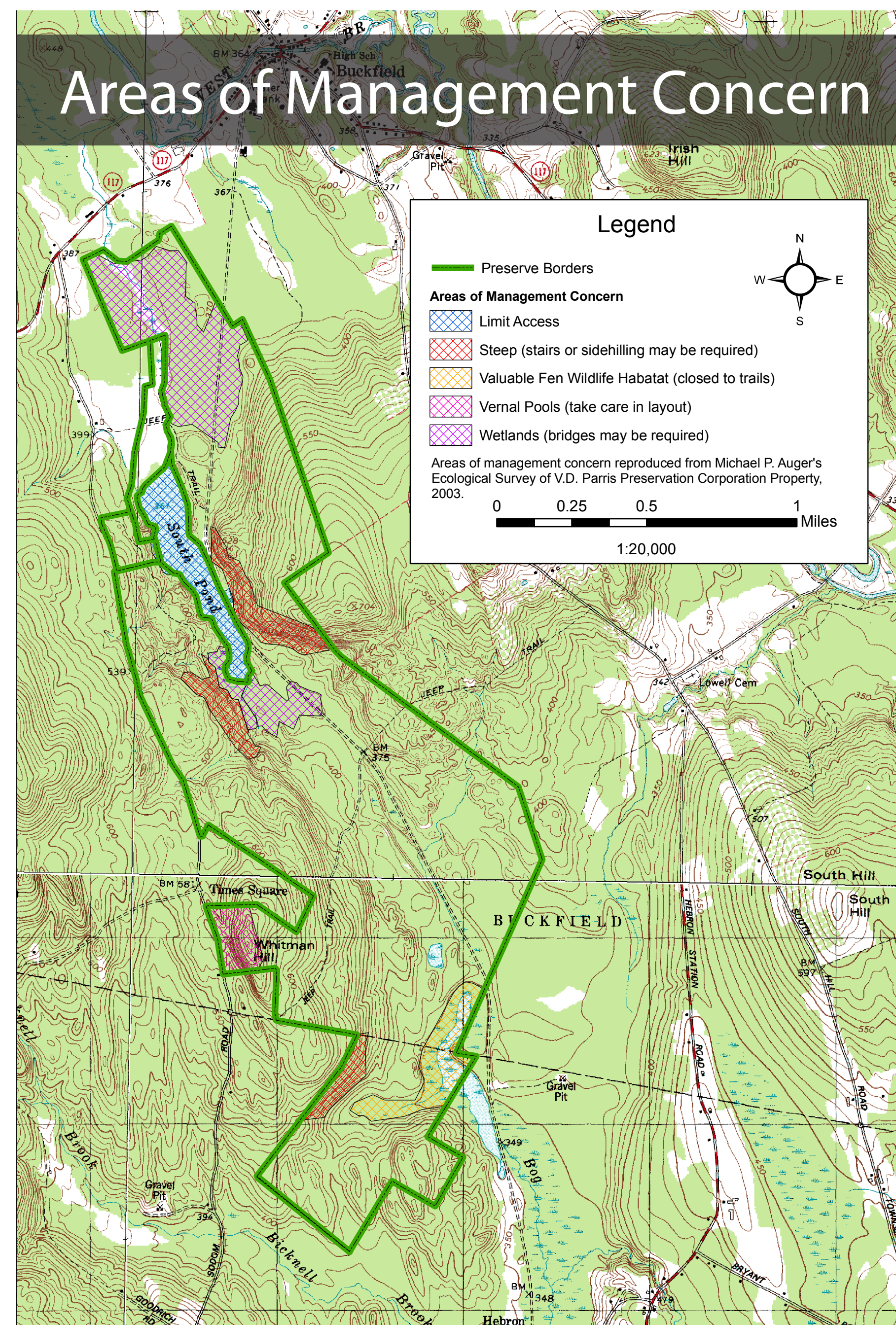
Field Data



Logging History



Areas of Management Concern



Recommendations

- Limit access points to South Pond to reduce erosion and ensure water quality
- Construct vegetation barriers to limit access to logging road networks
- Consider planting native species in log landings to limit invasion by non-native species
- Construct non-motorized trails to separate users and reduce conflicts
- Consider relocating the East-West multi-use club trail off the old road bed (or use treadway hardening techniques) to reduce erosion
- Construct informational kiosks at trailheads and signage throughout the preserve to encourage informed and respectful recreation by all users

