

Revealing core heterotic germplasm and characterizing of maize inbred lines using SSRs

Chunhui Hu^{1§}, Long Zhang^{1§}, Yongbin Dong¹, Qiang Zhou¹, Xinyu Li¹, Yangliu Ren¹, Sailan Zhu¹, Lan Zhang¹, Zhenzhen Liu¹, Yuling Li^{1*}

¹College of Agronomy, Henan Agricultural University, Collaborative Innovation Center of Henan Grain Crops, National Key Laboratory of Wheat and Maize Crop Science, 63 Nongye Rd, Zhengzhou, China

[§]These two authors contributed equally to this manuscript

*Corresponding author: E-mail: yuling_li@126.com

Abstract

Clear knowledge about germplasm characteristics of inbred lines is very important for breeding and genetic research in maize. In this study, a total of 100 SSR markers uniformly distributed on all chromosomes were used to classify 758 lines with broad germplasm types and to reveal the germplasm relationship of 452 introduced lines with unknown pedigree and 91 lines from different sources. Great genetic diversity was observed among these lines, with total alleles 384, alleles per locus 2 ~ 11, polymorphic information content 0.23 ~ 0.86, gene diversity 0.26 ~ 0.88, major allele frequency 0.09 ~ 0.50. All lines were divided into 10 groups G1~G10, in which all lines with unknown pedigree were included. Five typical heterotic groups were revealed. Three groups (G1, G2, and G7, totally included 695 lines, accounting for 91.69%) and two core heterotic types (G1×G2 and G7×G2) were consistently revealed according to typical lines, the genetic differences among different groups and between pairs of parental lines for 48 important commercial hybrids. Eighteen high-oil and 18 popcorn lines were distinctly classified in G7-9 and G8 groups. The namesake lines from different sources were classified into the same groups for 82 lines, while other 9 such lines were classified into different groups or subgroups. In addition, line improvement among typical groups was obviously reflected and proved to be the effective way in further maize breeding. These results were mainly consistent with inbred pedigree/heterotic groups, previous researches and breeding practice, and could provide useful germplasm information for all lines in further maize breeding and genetic research.

Keywords: maize, inbred line pedigree, germplasm characterization, heterotic type, genetic diversity, SSR markers

Introduction

Maize (*Zea mays* L) is the largest crop in the world due to its adaptability and productivity (Gerpacio and Pingali 2007; Shiri et al, 2014), which is widely used as food, feed and raw material in industry. Absolute heterosis utilization makes it very important to keep informed on the pedigree information of inbred lines and their genetic relationships for maize breeders and geneticists (Inghelant et al, 2010). Although line pedigree could reflect the genetic relationships, the results were greatly influenced by artificial selection, domestication and environmental conditions (Yu and Buckler, 2006). In addition, the line pedigree or origin was unclear in some instance. Also, great genetic difference might exist among inbred lines selected from the same population with complicated backgrounds.

Molecular markers had been provided to be a useful method to reflect the genetic diversity among maize lines on DNA level (Li et al, 2002; Lu et al, 2009; Wang et al, 2008; Xie et al, 2008; Yang et al, 2010; Liu et al, 2012). Due to its high polymorphism, repeatability, reliability, easy utilization and low cost, simple sequence repeats (SSR) markers had been widely used in evaluating the genetic diversity and the relationship among different maize germplasms all over the world

(Smith et al, 1990, 1997; Phelps et al, 1996; Taramino and Tingey, 1996; Lanza et al, 1997; Benchimol et al, 2000; Warburton et al, 2002; Barbosa et al, 2003; Liu et al, 2003; Reif et al, 2003; Li et al, 2004; Oliveira et al, 2004; Laborda et al, 2005; Reif et al, 2005; Stich et al, 2005; Bruel et al, 2006; Adetimirin et al, 2008; Aguiar et al, 2008; Wang et al, 2008; Warburton et al, 2008; Xie et al, 2008; Kuroda et al, 2009; Yang et al, 2010; Adeyemo et al, 2011; Cui et al, 2011; Terra et al, 2011; Liu et al, 2012; Gupta et al, 2014; Shiri et al, 2014; Fernandes et al, 2015; Pandey et al, 2015; Park et al, 2015). The divergence of lines evaluated by molecular markers could significantly reduce the labor and cost involved in line improvement and cross making (Guimarães et al, 2007; Van Inghelant et al, 2010; Gupta et al, 2014; Fernandes et al, 2015; Park et al, 2015). Although recently developed SNP markers have some advantages in comparison with SSR markers (Tian et al, 2015; Wu et al, 2016), especially in the rapidly automatic analysis, some previous research had showed that SSR markers were better than SNP markers in clustering germplasm and measuring genetic distance (Jones et al, 2007; Hamblin et al, 2007; Inghelant et al, 2010).

Different numbers of groups were divided in previ-

ous research in China. In general, normal corn germplasms were considered having 5 heterotic groups, including Lancaster (Lancaster Surecrop; Wang et al, 1998, 2008; Xie et al, 2008; Lu et al, 2009; Liu et al, 2012), Reid (Wang et al, 1998, 2008; Xie et al, 2008; Lu et al, 2009; Liu et al, 2012), Tangsipingtou (TSPT, improved lines from Sipingtou, a Chinese landrace; Wang et al, 1998, 2008; Xie et al, 2008; Lu et al, 2009; Liu et al, 2012), Lüdahonggu (LRC, Improved lines from «Lüda Reb Cob», a Chinese landrace; Wang et al, 1998; Xie et al, 2008; Lu et al, 2009; Liu et al, 2012) and other germplasms (Wang et al, 1998). Zhao et al (1999) referred the inbreds selected from American hybrid P78599 as P heterotic group, which was also called PB (Li et al, 2003; Xie et al, 2008; Li and Wang, 2010; Liu et al, 2012) or Tem-tropic I (Yang et al, 2010) in later researches. Correspondingly, lines derived from other modern American hybrids were called PA (Li et al, 2003; Xie et al, 2008; Lu et al, 2009; Li and Wang 2010). Some researchers referred the lines derived from American BSSS (Iowa Stiff Stalk Synthetic) as BSSS group (Xie et al, 2008; Lu et al, 2009). In addition, the analysis of germplasm diversity and their relationship with normal corn lines was also reported for high-oil corn and popcorn lines (Li et al, 2004; Yang et al, 2010; Cui et al, 2011).

In order to study the germplasm characteristics of inbred lines in Huanghuaihai maize growing region in China, a lot of lines were collected from several seed companies in our laboratory. But most of their pedigrees or origins were unclear, and some lines with the same name had several different sources. To reveal their pedigrees, 100 SSR markers were used to analyze their genotypes together with 307 lines with known pedigrees or origins in this study, including 269 normal corn, 20 high-oil corn and 18 popcorn inbred lines, and both parents for 48 commercial hybrids. Our first objective was to analyse the genetic diversity among all lines and to reveal the core germplasms and heterotic groups. The second objective was to obtain the origin message for unknown lines through their genetic relationship with lines having known pedigree and clear heterotic groups. This result could provide useful information for reasonable utilization of those lines and for further improvement in maize breeding and genetic research.

Materials and Methods

Plant materials

A panel of 758 maize inbred lines used in the present study included 307 lines with known pedigree or origin (269 normal corn lines, 20 high-oil corn lines and 18 popcorn lines) and 452 normal corn lines with unknown pedigree. Also, 91 line with the same but from 2~8 different sources were included. To reveal the consistency of classification result with breeding practice, the lines representing typical heterotic groups and the parental lines for 48 important commercial hybrids were included. All the inbred lines

and their known pedigrees or origins were listed in **Supplementary Table 1**. They were collected or improved in our laboratory in Zhengzhou Sub-center of Chinese National Maize Improvement Center. The information about pedigrees or origins for most lines could be found in several previous studies (Yuan et al, 2001; Li et al, 2002, 2004; Teng et al, 2004; Wang et al, 2008; Xie et al, 2008; Lu et al, 2009; Yang et al, 2010; Cui et al, 2011). All the high-oil lines were selected and provided by China Agricultural University (Jiang et al, 2005; Yang et al, 2010; Cui et al, 2011). And all the popcorn lines were selected in our laboratory.

All collected lines were planted at the Scientific Research and Education Center of Henan Agricultural University near Zhengzhou, Henan, China, in 2014. The rows were 4 m long with 0.67 m spacing between rows. Plots were planted by hand at a density of 75,000 plants ha⁻¹. Standard cultivation management practices were used, and the mixed lines were abandoned.

SSR genotyping

A total of 100 SSR primer pairs were chosen from MaizeGDB database (<http://www.maizegdb.org>) based on repeat units and bin locations. They were uniformly distributed throughout all 10 maize chromosomes (**Supplementary Table 2**). Total genomic DNA was extracted from fresh leaves from 10 plants of each line at the 6~7 leaf stage using the cetyltrimethylammonium bromide (CTAB) method with modifications according to Saghai-Marooof et al (1984). The quantity and quality of DNA were estimated using a UV spectrophotometer (NanoVue, GE, UK) and 1% agarose gel.

DNA from the lines was amplified in 20 µl reaction volume with PTC-200 Peltier Thermal cycler (MJ Research). PCR amplification procedure was performed according to the following program: 95' for 5 min, 1 cycle; 95' for 60 s, 57' for 45 s, 72' for 60 s, 35 cycles; 72' for 5 min, 1 cycle. 5 µl of each amplified sample was separated with electrophoresis on 6% agarose gel. The electrophoresis time was adjusted according to each SSR marker's size. The amplified fragments were detected by the silver staining method as described by Bassam et al (1991). A ladder (Tiangen) of 50 bp DNA marker was used to determine allele size of each inbred.

For subsequent statistical analysis, polymorphic bands were scored as «bp» typed by SSR markers, and a binary matrix was obtained. In addition, the «bp» typed original data were transformed to several input file format for PowerMarker, Numerical Taxonomy Multivariate Analysis System (Ntsys-pc) and TASSEL using DataTrans1.0 (Ge and Ren, 2011).

Genetic diversity analysis

The genetic similarity (GS) coefficients were calculated based on coefficient for similarity matching using the Ntsys-pc version 2.10 software with SIMQUAL module (Rohlf, 2000). With the help of SAHN-Cluster-

ing, the GS matrix was used to construct a dendrogram based on an unweighted pair group methods using arithmetic averages algorithm (UPGMA).

Group classification and analysis

The software package Ntsys-pc was employed to subdivide inbred lines into genetic groups according to the GS coefficients. The number of groups was set to 10 according to the large quantity of inbred lines and their known pedigree. The number of alleles, allele frequency, major allele frequency (MAF), gene diversity and polymorphic information content (PIC) for each group were estimated using the software package PowerMarker version 3.25 (Liu and Muse, 2005). PIC was calculated using the standard formula described by Botstein et al (1980). For the groups including large number of lines, a re-sampling strategy was also used to obtain genetic diversity of each subgroup. To easily understand, the GS among different groups or subgroups, and between the parental lines for 48 commercial hybrids were converted to genetic distance (GD) with $GD = 1 - GS$, accordingly.

Results

Genetic variation and diversity among all inbred lines

Among all the 758 inbred lines, a total of 384 alleles were detected across all the 100 SSR loci (Supplementary Table 2). The number of alleles per locus ranged from 2 to 11, with an average of 3.84 (Figure 1a). Analysis of all alleles led to identifying 11.46% (44 alleles) as rare (frequency < 0.05), 77.34% (297 alleles) as intermediate (frequency 0.05 ~ 0.5) and 11.20% (43 alleles) as abundant (frequency > 0.5; Figure 2).

The average polymorphic information content

(PIC) value was 0.55, with a range of 0.23 ~ 0.86. The average gene diversity among them was 0.61, ranging from 0.26 to 0.88. The average major allele frequency (MAF) was 0.25, with a range of 0.09~0.50 (Figure 1b; Supplementary Table 2).

Group classification of all inbred lines and cluster analysis

All the 758 inbred lines were divided into ten groups according to $GS = 0.697$. A dendrogram using UPGMA analysis showed that the clustering pattern was complex. This suggested that these inbred lines represented a broad range of maize germplasms (Supplementary Figure 1). For groups G1 ~ G10, 331, 136, 5, 17, 1, 2, 228, 25, 8, and 5 lines were included, respectively. Obviously, G1, G2, and G7 were three major groups, in which 695 lines were totally included, accounting for 91.69%. Since so many lines were accounted in these three groups, subgroups were also classified for groups G1, G2, and G7.

For the largest group G1, the 331 lines were clustered in 9 subgroups, for which 190, 22, 13, 31, 3, 33, 4, 23, and 12 lines were assigned to G1-1 ~ G1-9 subgroups when $GS = 0.710$, respectively. Accordingly, the 190 lines in group G1-1 were divided into 10 sub-subgroups, 49, 46, 8, 5, 19, 4, 45, 4, 4, and 6 lines were assigned to G1-1-1 ~ G1-1-10 when $GS = 0.724$, respectively. Xun9058 and improved lines from Zheng58 were clustered in G1-1-1 including WK858. Four famous lines B73, Ye478, Shen5003, Tie7922, and other improved lines were included in G1-1-2. Most inbred lines in G1-1-7 were directly elected from the original America hybrid P78599.

The 136 lines in group G2 were clustered in 8 subgroups when $GS = 0.735$, for which 34, 7, 3, 3, 65, 20, 3, and 1 lines were assigned to G2-1 ~ G2-8 sub-

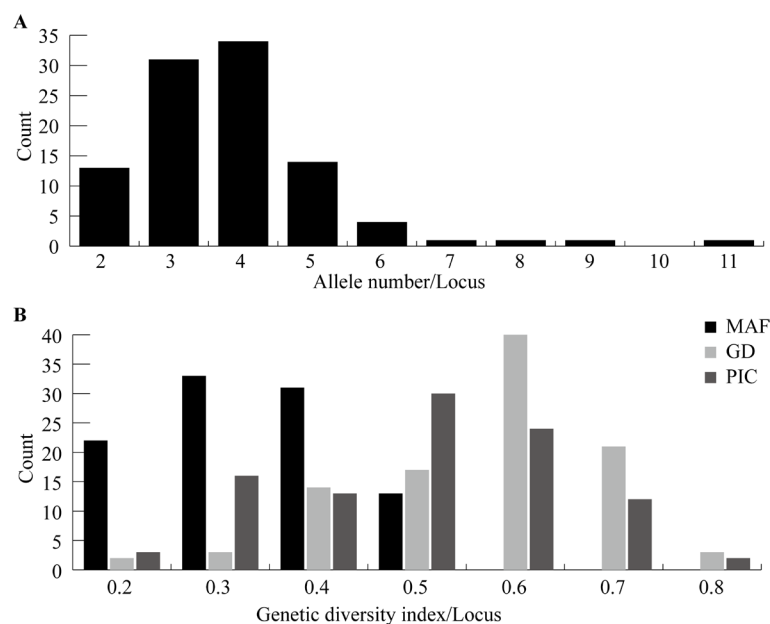


Figure 1 - Frequency of allele number, gene diversity, and polymorphic information content per locus in 758 maize inbred lines.

Table 1 - Summary statistics for all 10 classified major groups.

Groups	Line No.	MAF	Allele No.	Gene diversity	PIC
G1	331	0.576	3.680	0.572	0.506
G2	136	0.522	3.660	0.521	0.464
G3	5	0.538	2.150	0.521	0.497
G4	17	0.657	2.460	0.402	0.413
G5	1	0.502	2.000	0.266	0.500
G6	2	0.238	1.343	0.171	0.785
G7	228	0.584	3.800	0.579	0.566
G8	25	0.453	3.680	0.446	0.506
G9	8	0.769	3.680	0.446	0.507
G10	5	0.503	3.680	0.329	0.511
Mean	75.8	0.534	3.013	0.425	0.526

MAF: major allele frequency; PIC: polymorphic information content.

groups, respectively. All lines with known pedigrees or origins included both in groups G2-1 and G2-5 were related with Chang7-2 and other Huangzaosi lines, for which three famous lines were clustered, Chang7-2 in G2-1, and Lx9801 and Lx9311 in G2-5. The lines related with Dan340 were included in G2-6.

The 228 lines in group G7 were classified into 9 subgroups when $GS = 0.712$, for which 97, 2, 12, 24, 44, 20, 4, 7, and 18 lines were included in G7-1 ~ G7-9 subgroups, respectively. Accordingly, the 97 lines in group G7-1 were divided into 6 sub-subgroups when $GS = 0.736$, 35, 32, 13, 6, 5, and 6 lines were assigned to G7-1-1 ~ G7-1-10, respectively. G7-1-1 mainly included lines improved from hybrids P78599 and Kx4564, and from lines Shen5003, Zheng58 and Xun9058. The important line Zheng58 was included in G7-1-2. The two parental lines PH6WC and PH4CV for the famous hybrid Xianyu335 were included in G7-1-3 and G7-4. HuangC and Shen137 were included in G7-1-6 and G7-3, respectively. Lines Qi319, Xu178, Yu87-1 from various sources were all included in G7-5, which were directly selected from hybrid P78599. The 18 lines included in G7-9 were all lines with high-oil. Other two high-oil lines were included in G7-1-4.

For the other 7 groups, only 63 lines were totally included, accounting for 8.31%. The famous line Mo17 and its improved line W9706, line NH60 from hybrid Xianyu 335, and line PH6WCH improved from PH6WC were included in G3. In addition, 18 popcorn lines were all included in G8.

Genetic characteristics for different groups and their relationship

According to MAF, allele number, gene diversity and PIC, there existed high genetic diversity within all groups (Table 1). But all parameters showed great difference across various groups. The MAFs were from 1.343 to 3.800, high for G9 and G4, and the lowest for G6. The number alleles per locus and the gene diversity were from 1.00 to 3.66 and from 0.413 to 0.785, which were all the highest for G7, and the lowest for G6. PICs were from 0.171 to 0.579, with the highest for G6, and low for G4. For the three major groups (G1, G2, and G7), all their parameters were similar, but they were all the highest for G7, the lowest for G2.

For the genetic differences among the 10 different groups, the values of GDs were from 0.4072 to 0.9364, which were very high between G1 and G2 (0.9364), between G1 and G7 (0.9268) and between G2 and G7 (0.9177) (Supplementary Table 3). The lowest GDs were observed between G5 and both G6 and G9 (0.4072 and 0.4701), in which only lines with unknown pedigree were included. For the three major subgroups, great genetic differences were also existed within each subgroup. The values of GDs were from 0.7338 to 0.9503 among subgroups G1-1 ~ G1-9, with the highest between G1-1 and G1-4 and the lowest between G1-5 and G1-7 (Supplementary Table 4). For subgroups G2-1 ~ G2-8, GDs were from 0.5036 (between G2-4 and G2-8) to 0.8735 (between G2-1 and G2-5) (Supplementary Table 5). In subgroups G7-1~G7-9, the GD values were from 0.5934 (between G7-2 and G7-7) to 0.8971 (between G7-1 and G7-6) (Supplementary Table 6). Even among the 10 sub-subgroups in group G1-1 and G7-1, there also existed great genetic differences. GDs were from 0.7051 (between G1-1-6 and G1-1-9) to 0.9045 (between G1-1-1 and G1-1-2) among sub-subgroups G1-1-1~G1-1-10, and from 0.6754 (G7-1-3 / G7-1-6) to 0.9156 (G7-1-1 / G7-1-2) among sub-subgroups G7-1-1~G7-1-6 (data not showed).

Group classification and genetic distance for pairs of parental lines for commercial hybrids

The parental lines and their types of classified groups for 48 important commercial hybrids were listed in Table 2, including famous hybrids B73×Mo17, Yedan13, Zhengdan958, Nongda108, Xundan20, Ludan981, Ludan50, Weike702, Yuyu22, and Xianyu335. Totally, 8 group types were revealed, which were 6 types between different major groups, G1×G2, G7×G2, G1×G3, G1×G7, G4×G2, and G7×G8, and 2 types between subgroups within the same major groups, G1×G1 and G7×G7. Clearly, G1×G2 and G7×G2 were the most important heterotic types, in which 21 and 10 hybrids were included. Hybrids Xundan20 and Weike702 belonged to G1×G2, Zhengdan958, Ludan981, and Ludan50 belonged to G7×G2, and Yedan13 belonged to G1/G7×G2. B73×Mo17 belonged to G1×G3. Nongda108,

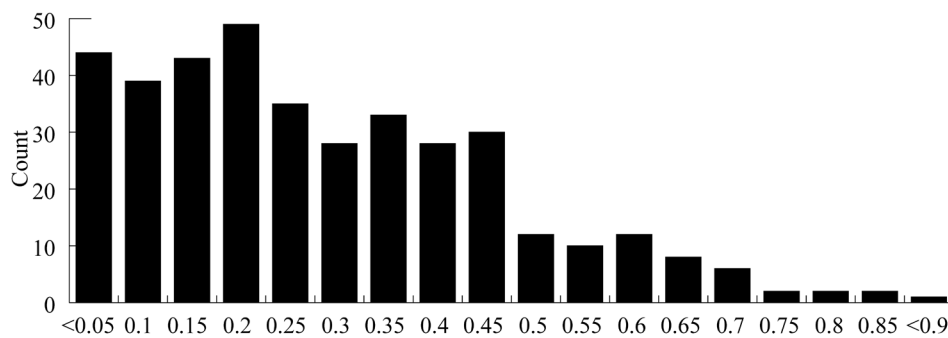


Figure 2 - Histogram of allele frequencies in 758 maize inbred lines in this study.

Xianyu335, and Yuyu22 belonged to G7×G7.

The genetic distances (GD) between each pairs of parental lines for all hybrids were high, with the average of 0.706. but there existed a great variance among different hybrids, from 0.628 for hybrid Ludan981 to 0.779 for hybrid Jiudan48. For the 9 major hybrids Xianyu335, Yuyu22, Ludan50, Weike702, Xundan20, B73×Mo17, Zhengdan958, Yedan13, and Nongda108, their parental GDs were 0.670, 0.674, 0.686, 0.707, 0.710, 0.710, 0.729, 0.745, and 0.753, respectively.

Grouping of inbred lines with unknown pedigree or origin and the namesake lines from different sources

For the total 452 lines with unknown pedigrees, 227, 64, 3, 12, 1, 2, 123, 7, 8, and 5 lines were included in groups G1~G10, respectively (Supplementary Table 1). Also, G1, G2, and G7 included the most lines as the tendency for the total lines, totally 414 lines, accounting for 91.57%. For the three main sub-groups, 108, 17, 13, 25, 3, 33, 1, 20, and 7 lines in G1-1 ~ G1-9, 16, 26, 7, 4, 14, 4, 29, 4, 2, and 2 lines in sub-subgroups G1-1-1 ~ G1-1-10, 16, 7, 2, 3, 23, 10, and 3 in G2-1~G2-7, and 49, 2, 6, 14, 30, 17, 1. and 3 lines in G7-1 ~ G7-9, were included, respectively. Four major groups (G5, G6, G9, and G10) and six subgroups (G1-1-6, G1-1-8, G1-3, G2-4, G2-7, and G7-2) only included lines with unknown pedigrees.

For the 91 namesake lines from different sources, 68 lines were from two sources, 12 lines from three sources, 6 lines from four sources, 1 line from five sources, 3 lines from six sources, and 1 line from eight sources (Supplementary Table 1). The namesake lines from different sources for 82 lines were classified into the same groups, while other 9 such lines were classified into different groups.

Discussion

Core germplasm and heterotic groups revealed using molecular markers in maize

The revealing of core germplasms and their heterotic types played an important and basic role in maize successful breeding program. In this study, a total of 758 lines were classified into 10 groups us-

ing 100 pairs of SSR markers. This large quantity of lines represented a broad range of germplasm types, which included 720 normal corn, 20 high-oil and 18 popcorn lines. Compared with the results in previous research (Wang et al, 1998, 2008; Zhao et al, 1999; Li et al, 2003; Xie et al, 2008; Lu et al, 2009; Li and Wang, 2010; Yang et al, 2010; Liu et al, 2012), and considered the lines having known pedigree or origin, G1-1-1/G1-1-2, G2-1/G2-5, G7-5, G2-6, and G3 could be considered as the typical Reid, TSPT, PB, LRC, and Lancaster heterotic groups, respectively. In fact, Reid×TSPT, PB×TSPT were the most two important heterotic types at Huanghuaihai maize growing region in China (Li et al, 2003; Xie et al, 2008; Li and Wang, 2010; Yang et al, 2010; Liu et al, 2012). Herein, large quantity of lines were included in G1, G2, and G7 (totally accounting for 91.69%), and the parental lines for most commercial hybrids belonged to the G1×G2, G7×G2 group types (accounting for 66.67%). Even for the 452 lines with unknown pedigrees, 414 lines were classified into G1, G2, and G7, accounting for 91.59%. In fact, very high GDs were observed between G1 and G2 (0.9364) and between G2 and G7 (0.9177). Clearly, this result showed that lines in groups G1, G2, and G7 were the core germplasm, and G1×G2 and G7×G2 were core heterotic group types, which was highly consistent with previous researches, breeding practice and inbred line pedigrees or heterotic groups.

In fact, Reid×Lancaster, Reid×PB, and Reid×LRC and Lan×LRC were also heterotic types in maize. Herein, G1-1-2×G3 for cross B73×Mo17 corresponded to the typical Reid×Lancaster heterotic group. G1-4×G7-3 for hybrid Lianyu15 was the typical Reid×PB heterotic group, G4×G2-6 for hybrid Nonghua101 was the typical Lan×LRC. G7-1-2×G8 for hybrid DH3119 was Reid×other cross type. The GDs between parental lines for these four hybrids were 0.710, 0.695, 0.690, and 0.727, respectively.

But for the other 12 commercial hybrids, their two pairs of parental lines were all included in the same groups but the different subgroups, for 7 hybrids within G1, and for 5 hybrids within G7. Since so many lines were included within both G1 (331 lines) and G7 (228 lines), great genetic diversity ex-

Table 2 - The types of groups, parental lines and their genetic distance for 48 important commercial hybrids.

Group type	Subgroup type	Hybrid/Cross	Female inbred line ID	Male inbred line ID	GD	
G1 × G2	G1-1-1 × G2-1	Xundan20/Xun9058 × Xun92-8	M1/5/88/174	M2/6/93/605/608/607	0.710	
	G1-1-1 × G2-1	Xundan22/Xun9058 × Xun926	M1/5/88/174	M606	0.698	
	G1-1-1 × G2-1	Ludan9002/Zheng 58 Gai × Lx9801	M103	M14/22	0.735	
	G1-1-1 × G2-1	Yudan916/ × Xun926	M651/652	M606	0.722	
	G1-1-1 × G2-1	Yudan919/ × Xin77	M654	M602	0.721	
	G1-1-2 × G2-1	Xindan22/Xin 358 × Xin77	M83	M602	0.659	
	G1-1-2 × G2-1	Fengliao008/L508 × Chnag7-2	M108	M20/486	0.688	
	G1-1-2 × G2-1	Anyu5/Ye478 × Chnag7-2	M728	M20/486	0.698	
	G1-1-7 × G2-1	Anyu8/An246 × Chnag7-2	M309	M20/486	0.698	
	G1-1-1 × G2-5	Xindan26/Xin 328/04W × Xin7 Hong	M11/533	M12/100	0.713	
	G1-1-1 × G2-5	Luodan236/ZK05-1 × ZK02-2	M46	M47/53	0.677	
	G1-1-1 × G2-5	Luoyu4/ZK01-5 × ZK02-2	M52	M47/53	0.724	
	G1-1-1 × G2-5	Zhenjie2/J89 × Lx8901	M56	M14/22	0.735	
	G1-1-1 × G2-5	Jinbei288/Bx144 × Bx143	M334	M89	0.685	
	G1-1-1 × G2-5	Zhongke11/CT03 × CT201	M333	M116	0.716	
	G1-1-1 × G2-5	Luodan6/L9951 × L427	M342	M341	0.760	
	G1-1-1 × G2-5	Weike702/WK858 × WK798-2	M632/633	M469/634/635/636/637/638	0.707	
	G1-1-1 × G2-5	Nongle988/NL278 × NL167	M668	M669	0.703	
	G1-1-2 × G2-5	Xindan29/Xin0472 × Lx9801	M13	M14/22	0.724	
	G1-1-2 × G2-5	Fengli98/F7908 × F209	M36	M37	0.703	
	G1-1-5 × G2-3	Nongda3138/Zong31 × P138	M243/674	M246	0.695	
	G1-1-2 × G2-6	Yedan13/Ye478 × Dan 340	M728	M767	0.745	
	G7 × G2	G7-1-2 × G2-1	Zhengdan958/Zheng 58 × Chnag 7-2	M17/630	M20/486	0.729
		G7-1-1 × G2-1	Xundan18/ Xun248 × Xun92-6	M3/357	M605	0.701
G7-1-2 × G2-1		Yudan2670/ HL5311 × Chang7-2	M18/516	M20/486	0.698	
G7-5 × G2-6		Liangyu88/ M54-2 × S122	M121/185/306/546	M168/307/337/544	0.693	
G7-4 × G2-1		Zhengdan518/ Xuan73 × Chnag7-2	M133/303	M20/486	0.695	
G7-1-1 × G2-5		Luodan2/ ZK03-1 × ZK02-2	M244	M47/53	0.693	
G7-1-2 × G2-5		Zhongdan909/ Zheng58 × HD568	M17/630	M321/322/461/462/494/495	0.678	
G7-5 × G2-8		Ludan50/ Qi319 × Luyuan92	M86/186/191/192/564/565/566/567	M547	0.686	
G7-9 × G2-5		Gaoyou5580/ C518 × By815	M221	M481/482	0.688	
G7-5 × G2-5		Ludan981/ Qi319 × Lx9801	M86/186/191/192/564/565/566/567	M14/22	0.628	
G1 × G3	G1-1-2 × G3	B73 × Mo17/ B73 × Mo17	M324/725	M327	0.710	
G1 × G7	G1-4 × G7-3	Lianyu15/ L543 × L136-87	M71/217	M72	0.695	
G4 × G2	G4 × G2-6	Nonghua101/ NH60 × S121	M344/553	M345/554	0.690	
G7 × G8	G7-1-2 × G8	DH3119/65232 × 8723	M439	M440	0.727	
G1 × G1	G1-1-2 × G1-1-10	Yudan998/ Yu82 × Yu679	M16	M15/366	0.695	
	G1-1-2 × G1-2	Anyu13/ A28 × A3566	M235	M248	0.669	
	G1-1-2 × G1-7	Anyu12/ A28 × A41	M235	M247	0.714	
	G1-1-3 × G1-9	Pudan6/ P97 × P9444	M29	M30	0.680	
	G1-1-7 × G1-1-9	Jinhai5/ JH78-2 × JH3372	M67	M68	0.747	
	G1-4 × G1-1-7	Liyu16/ L953 × L91158-1	M44/237	M24/45	0.753	
	G1-4 × G1-1-10	Jiudan48/ J97108 × J81162	M59	M60	0.779	
G7 × G7	G7-5 × G7-1-6	Nongda108/ P138 × HuangC	M38/601	M39/512	0.753	
	G7-1-3 × G7-4	Xianyu335/ PH6WC × PH4CV	M7/384/447/448/449/450	M8/139/381/382	0.670	
	G7-7 × G7-5	Yuyu22/ Zong3 × Yu87-1	M9/628	M10/620	0.674	
	G7-7 × G7-3	Zheng93-1/ Zheng653 × BT1	M631	M158/476	0.729	
	G7-1-1 × G7-1-5	Zhengdan21/ Zheng 29 × Zhneg35	M162/627/629	M33/241/394	0.700	

GD: genetic distance.

isted in both groups. This could be shown from the GDs among different subgroups G1-1 ~ G1-9 (0.7338 ~ 0.9503) in group G1 and G7-1 ~ G7-9 (0.5934 ~ 0.8971) in G7, and among different sub-subgroups G1-1-1 ~ G1-1-10 (0.7051 ~ 0.9045) in G1-1 and G7-1-1 ~ G7-1-6 (0.6754 ~ 0.9156) in G7-1. In fact, the GDs between their parental lines were all high, from 0.669 (G1-1-2 × G1-2 for Anyu13) to 0.779 (G1-4 × G1-1-10 for Jiudan48) in G1, and from 0.670 (G7-1-3 × G7-4 for Xianyu335) to 0.753 (G7-5 × G7-1-6 for Nongda108) in G7. In addition, from the pedigrees of those parental lines, G1-1-2 × G1-1-10 for hybrid Yudan998, G1-1-3 × G1-9 for hybrid Pudan6, G1-4 × G1-1-10 for hybrid Jiudan48, and G7-1-3 × G7-4 for hybrid Xianyu335 were all corresponded to the typical Reid × Lancaaster heterotic group, while G1-1-2 × G1-2 for hybrid Anyu13, G1-1-7 × G1-1-9 for hybrid Jinhai5, G1-4 × G1-1-7 for hybrid Liyu16, G7-7 × G7-3

for hybrid Zheng93-1, G7-7 × G7-5 for hybrid Yuyu22, and G7-5 × G7-1-6 for hybrid Nongda108 were all the typical Reid × PB heterotic group. G1-1-2 × G1-7 for hybrid Anyu12 was the typical Reid × PB/LRC heterotic group.

In previous research, different results were obtained about the correlation between GD and the performance of hybrids (Smith et al, 1990; Stuber et al, 1992; Lanza et al, 1997; Bruel et al, 2006; Guimarães et al, 2007; Fernandes et al, 2015). But the correspondence of GDs among different groups with heterotic types was commonly observed in maize breeding in China (Zhao et al, 1999; Li et al, 2000; Yuan et al, 2001; Teng et al, 2004; Liu et al, 2012). Therefore, it was very important to classify groups for all inbred lines and to reveal their heterotic types.

Further germplasm improvement at Huanghuaihai maize growing region in China

Successive breeding depended on the continuous germplasm improvement, which needed large genetic diversity among different germplasms. Due to domestication and modern breeding, the genetic diversity in maize has been increasingly narrowed compared with its wild relatives (Choukan et al, 2004; Shiri et al, 2014). Maize breeding faces unique challenges resulting from the narrow genetic background of commercial cultivars (Choukan et al, 2004; Shiri et al, 2014; Park et al, 2015). Narrow genetic diversity is problematic when breeding for adaptation to biotic and abiotic stress (Shiri et al, 2014). In order to broaden genetic variation for use in future maize breeding, the genetic relationships among all maize germplasms should be investigated.

In our present study, the complex dendrogram with 10 major groups and many subgroup was observed, which brought valuable information on genetic diversity among all the lines. Although the allele frequencies, PIC values, and gene diversity values for all groups showed that those inbred lines contain extensive genetic variation, several core lines or hybrids were clearly used extensively in modern hybrid breeding, especially for the three major groups (G1, G2, and G7), such as Chang7-2, P78599. Therefore, enhancing the genetic base of elite germplasm through introgression of exotic germplasm was important to exploit heterotic potential (Ron-Parra and Hallauer, 1997). In addition to the direct utilization for newly introduced germplasm, such as America hybrid P78599, the successfully indirect way should be adapted according to their heterosis with the typical lines in major heterotic groups.

In addition, the cross improvement for lines between different typical groups could clearly be seen in this study, such as TSPT×LRC (in G2), TSPT×Lancaster (in G2 and G3), Reid×PB (in G1 and G7), etc. Especially, both groups G1 and G7 included many improved lines from the cross of Reid×PB lines. Five subgroups in G1 (G1-1-1, G1-1-7, G1-2, G1-4, G1-8) and two subgroups in G7 (G7-1-1, G7-1-2) consistently included Reid×P78599 related germplasm. The result of group classification for those lines depended on the direction of selection, for which improved lines with more Reid germplasm were classified into Reid group (G1), while lines with more PB germplasm were classified into PB group (G7). Simultaneously considering the result of group classification and the lines with known pedigrees or origins in different groups in our present study, only G7-5 included all lines directly selected from America hybrid P78599, which could be called the typical PB heterotic group. Besides, very few modern lines were improved from single or multiple cross between old typical lines within the same group in all the 10 groups.

Of course, the genetic divergence among the parental lines was one of the key factors which determined the extent of heterosis (Moll et al, 1965;

Prasad and Singh, 1986). In case of keeping heterotic groups, it should be a major way to combine various favorable traits from different groups with low heterosis in further line improvement. Considering the core place of germplasm in groups G1, G2, and G7, and the two efficient heterotic group types G1×G2 and G2×G7, the most favorable selection might be to combine Reid and PB germplasm, and to introduce elite lines in other groups into TSPT (G2). Finally, the only efficient heterotic type (G1+G7)×G2 was developed, which could not only be beneficial to broad germplasm in each group, but also make the line improvement and cross making simple.

Group classification for lines with unknown pedigree and their utilization

Simultaneous cluster analysis for lines in the absence of pedigree with lines having clear pedigree or origin could bring valuable information for their efficient utilization. In this study, 452 lines with unknown pedigree or origin were included, which were classified into all the 10 major groups. Their importance in further germplasm improvement could be seen from their classification result and their genetic relationship with lines having known pedigrees. The first way was to use them to improve the lines with known pedigree or origin within the same group, and to make crosses between lines with known pedigree or origin in their corresponding heterotic groups. For the 10 subgroups, G1-1-6, G1-1-8, G1-3, G1-6, G2-2, G2-3, G2-3, G2-4, G2-7, and G7-2, in which only lines with unknown pedigree or origin were included, those lines could be used to improve the lines with known pedigree or origin within the same major groups.

For the four groups (G5, G6, G9, and G10) only included lines with unknown pedigree, lines in those groups could be utilized to improve lines in any other groups according to their GDs with other groups. Considering the great improvement potential from G1×G7, it would be favorable to use them to improve lines in G2.

Group classification for namesake lines from different sources

The inconsistency of group classification with pedigree was commonly found in several previous researches (Li et al, 2004; Wang et al, 2008; Xie et al, 2008; Inghelandt et al, 2010; Yang et al, 2010; Cui et al, 2011). Several possible reasons were considered as follows: i) lines developed from germplasms with complicated backgrounds (such as hybrids, landraces and populations); ii) differences in criterion and environment for selection; iii) sampling effects and genetic drift; iv) misnamed and miscellaneous lines. In all such cases, it was necessary and very useful to use molecular markers to obtain clear knowledge about genetic relationship among lines both in breeding (inbred development and cross making) and in theoretical research.

In this study, 91 lines with the same name but from 2~8 different sources were included. Their re-

ality should be made clear in ahead of utilization. The result of classification showed that most namesake lines from different sources were clustered in the same group, totally accounting for 90.11%. But about 9.89% such lines were clustered in different groups. Unfavorable use of such lines might result in the germplasm confusion between heterotic groups, which would lead to fruitless labor in further line improvement and cross making.

Two major reasons might lead to namesake lines from various sources being classified into different groups. The first one might be line nickname, for which the line name was not consistent with its real germplasm. In this case, such lines might be classified into different major groups, such as W26 (M181/591, G1-1-7/G7-5), ZWM1 (M347/435, G4/G1-2), BX111 (M535/662, G7-6/G1-2), IAS09 (M538/664, G7-6/G1-2), KY7M (M539/666, G7-6/G1-2), IAS01 (M184/537/663, G1-1-2/G7-1-1/ G1-1-2), and ZXW2 (M106/350/391, G4/G4/G7-4) in this study. The second reason might be the late selection during seed keeping in different units, in which such lines might be classified into different subgroups within the same major groups, such as D340 (M69/521, G1-2/G1-8) and Ji223 (M144/145/522/523, G7-1-1/G7-3/ G7-1-1/G7-3). So, line reality keeping was also important in practical breeding or genetic research.

Conclusions

To conclude, this study revealed three core groups and two core heterotic patterns through the classification of a large quantity of lines with broad germplasm types. Accordingly, the 452 lines with absence of pedigree and the 91 lines with 2~8 different sources were clearly clustered. This result could provide useful information for the efficient utilization of all lines in further line improvement and cross making in maize breeding.

Acknowledgements

We greatly thank China Agricultural University for providing us the high-oil maize lines.

References

Adetimirin VO, Vroh-Bi I, The C, Menkir A, 2008. Diversity analysis of elite maize inbred lines adapted to west and central Africa using SSR markers. *Maydica* 53: 143-149

Adeyemo O, Menkir A, Melaku G and Omidiji O, 2011. Genetic diversity assessment and relationship among tropical-yellow endosperm maize inbred lines using SSR markers. *Maydica* 56: 17-23

Aguiar CG, Schuster I, Amaral AT Jr, Scapim CA, Vieira ES, 2008. Heterotic groups in tropical maize germplasm by test crosses and simple sequence repeat markers. *Genet Mol Res* 7: 1233-1244

Barbosa AMM, Geraldi IO, Benchimol LL, Garcia AAF, Souza CL, Souza AP, 2003. Relationship of intra-and interpopulation tropical maize single

cross hybrid performance and genetic distances computed from AFLP and SSR markers. *Euphytica* 130: 87-99

Bassam BJ, Caetano-Anolles G, and Gresshoff PM, 1991. Fast and sensitive silver staining of DNA in polyacrylamide gels. *Analytical Biochem* 196: 81-84

Benchimol LL, DE Souza Jr CL, Garcia AAF, Kono PMS, Mangolin CA, Barbosa AMM, Coelho ASG, DE Souza AP, 2000. Genetic diversity in tropical maize inbred lines: heterotic group assignment and hybrid performance determined by RFLP markers. *Plant Breed* 119: 491-496

Botstein D, White RL, Skolnick M, Davis RW, 1980. Construction of a genetic linkage map in man using restriction fragment length polymorphisms. *Am J Hum Genet* 32: 314-331

Bruel DC, Carpentieri-Pípolo V, Gerage AC, da Silva Fonseca Júnior N, Cavenaghi Prete CE, de Fátima Ruas C, Ruas PM, de Souza SGH and Garbuglio DD, 2006. Genetic distance estimated by RAPD markers and its relationship with hybrid performance in maize. *Pesquisa Agropecuária Brasileira* 41(10): 1491-1498

Cui QX, Tang BJ, Chen HQ, Liu YX, Li YL, Chen SJ, Zhang ZW, Wang QL, 2011. Analysis of genetic relationship between high-oil and normal maize inbred line using SSR markers. *Journal of Maize Sciences* 19: 14-18

Guimarães SP, Paterniani MEAGZ, Lüders RR, Souza AP, Laborda PR, Oliveira KM, 2007. Correlation between the heterosis of maize hybrids and genetic divergence among lines. *Pesq Agropec Bras* 42:811-816

Fernandes EH, Schuster I, Scapim CA, Vieira ESN, Coan MMD, 2015. Genetic diversity in elite inbred lines of maize and its association with heterosis. *Genetics and Molecular Research* 14: 6509-6517

Ge HM, Ren M, 2011. DataTrans1.0: A software for microsatellite data processing based on Excel Macro. *Molecular Plant Breeding* 9: 1359-1365

Gerpacio VR, Pingali PL, 2007. Tropical and subtropical maize in Asia: Production systems, constraints and research priorities. Mexico, DF

Gupta S, Kumari K, Muthamilarasan M, Parida SK, Prasad M, 2014. Population structure and association mapping of yield contributing agronomic traits in foxtail millet. *Plant Cell Rep* 33: 881-893

Hamblin MT, Warburton ML, Buckler ES, 2007. Empirical comparison of simple sequence repeats and single nucleotide polymorphisms in assessment of maize diversity and relatedness. *PLoS One* 2:e1367

Inghelandt DV, Melchinger AE, Lebreton C, Stich B, 2010. Population structure and genetic diversity in a commercial maize breeding program assessed with SSR and SNP markers. *Theor Appl Genet* 20: 1289-1299

Jiang HY, Chen SJ, Gao LF, Xing JM, Song TM, Dai

- JR, 2005. Analysis on heterotic groups and heterotic patterns of high oil corn inbred lines. *Acta Agronomica Sinica*, 31: 361-367
- Jones ES, Sullivan H, Bhatramakki D, Smith JSC, 2007. A comparison of simple sequence repeat and single nucleotide polymorphism marker technologies for the genotypic analysis of maize (*Zea mays* L.). *Theor Appl Genet* 115: 361-371
- Kuroda Y, Tomooka N, Kaga A, Wanigadeva SMSW, Vaughan DA, 2009. Genetic diversity of wild soybean (*Glycine soja* Sieb. et Zucc.) and Japanese cultivated soybeans [*G. max* (L.) Merr.] based on microsatellite (SSR) analysis and the selection of a core collection. *Genet Resour Crop Evol* 56: 1045-1055
- Laborda PR, Oliveira KM, Garcia AAF, Paterniani ME, de Souza AP, 2005. Tropical maize germoplasm: what can we say about its genetic diversity in the light of molecular markers? *Theor Appl Genet* 111: 1288-1299
- Lanza LLB, de Souza Jr CL, Ottoboni LMM, Vieira MLC, de Souza AP, 1997. Genetic distance of inbred lines and prediction of maize single-cross performance using RAPD markers. *Theor Appl Genet* 94: 1023-1030
- Li XH, Yuan LX, Li XH, Zhang SH, Li MS, Li WH, 2003. Heterotic grouping of 70 maize inbred lines by SSR markers. *Scientia Agricultura Sinica* 36: 622-627
- Li Y, Wang TY, 2010. Germplasm base of maize breeding in China and formation of foundation parents. *Journal of Maize Sciences* 18: 1-8
- Li Y, Du J, Wang T, Shi Y, Song Y, Jia J, 2002. Genetic diversity and relationships among Chinese maize inbred lines revealed by SSR markers. *Maydica* 47: 93-101
- Li YL, Lv DB, Wang YZ, Chen SJ, Tang JH, 2004. Study on the genetic diversity of popcorn inbreds and their germplasm relationship with normal corn inbreds using SSR markers. *Maydica* 49: 327-333
- Liu K, Goodman M, Muse S, Smith JS, Buckler E, Doebley J, 2003. Genetic structure and diversity among maize inbred lines as inferred from DNA microsatellites. *Genetics* 165: 2117-2128
- Liu K, Muse SV, 2005. PowerMarker: an integrated analysis environment for genetic marker analysis. *Bioinformatics* 21: 2128-2129
- Liu Z, Wu X, Liu H, Li Y, Li Q, Wang F, Shi Y, Song Y, Song W, Zhao J, Lai J, Li Y, Wang T, 2012. Genetic Diversity and Population Structure of Important Chinese Maize Inbred Lines Revealed by 40 Core Simple Sequence Repeats (SSRs). *Scientia Agricultura Sinica* 45: 2107-2138
- Lu YL, Yan JB, Guimaraes CT, Taba S, Hao ZF, Gao SB, Chen SJ, Li JS, Zhang SH, Vivek BS, Mago-rokoso C, Mugo S, Makumbi D, Parentoni SN, Shah T, Rong TZ, Crouch JH, Xu YB, 2009. Molecular characterization of global maize breeding germplasm based on genome-wide single nucleotide polymorphisms. *Theor Appl Genet* 120: 93-115
- Oliveira KM, Laborda PR, Garcia AAF, Paterniani ZME, Augusto F Garcia A, Zagatto Paterniani ME, de Souza AP, 2004. Evaluating genetic relationships between tropical maize inbred lines by means of AFLP profiling. *Hereditas* 140: 24-33.
- Pandey N, Hossain F, Kumar K, Vishwakarma AK, Muthusamy V, Manjiaiah KM, Agrawal PK, Guleria SK, Reddy SS, Thirunavukkarasu N, Gupta HS, 2015. Microsatellite marker-based genetic diversity among quality protein maize (QPM) inbreds differing for kernel iron and zinc. *Molecular Plant Breeding* 6: 1-10
- Podig D, Zoric M, Kobiljski B, Savic J, Kandic V, Quarrie S, Barnes J, 2015. Genetic diversity, population structure, and association mapping of biomass traits in maize with simple sequence repeat markers. *Genes & Genomics* 37: 725-735
- Phelps TL, Hall AE, Buckner B, 1996. Microsatellites repeat variation within the *y1* gene of maize and teosinte. *The J Heredity* 87: 396-399
- Reif JC, Melchinger AE, Xia XC, Warburton ML, Hoisington DA, Vasal SK, Srinivasan G, Bohn M, Frisch M, 2003. Genetic distance based on simple sequence repeats and heterosis in tropical maize populations. *Crop Sci* 43: 1275-1282
- Reif JC, Hamrit S, Heckenberger M, Schipprack W, Maurer HP, Bohn M, Melchinger AE, 2005. Genetic structure and diversity of European flint maize populations determined with SSR analyses of individuals and bulks. *Theor Appl Genet* 111: 906-913
- Rohlf FJ, 2000. NTSYS-pc. Numerical taxonomy and multivariate analysis system, version 2.10. Exeter Software, New York
- Saghai MM, Soliman KM, Jorgensen RA, Allard RW, 1984. Ribosomal DNA spacer length polymorphisms in barley: mendelian inheritance, chromosomal location, and population, and population dynamics. *PNAS* 81: 8014-8018
- Shiri MR, Choukanb R, Aliyevc RT, 2014. Study of genetic diversity among maize hybrids using SSR markers and morphological traits under two different irrigation conditions. *Crop Breeding Journal* 4: 65-72
- Smith JSC, Chin ECL, Shu H, Smith OS, Wall SJ, Senior ML, Mitchell SE, Kresovich S, Ziegler J, 1997. An evaluation of the utility of SSR loci as molecular markers in maize (*Zea mays* L.): Comparisons with data from RFLPs and pedigree. *Theor Appl Genet* 95: 163-173
- Smith OS, Smith JSC, Bowen SL, Tenborg RA, Tenborg RA, Wall SJ, 1990. Similarities among a group of elite maize inbreds as measured by pedigree, F1 grain yield, grain yield, heterosis, and RFLPs. *Theor Appl Genet* 80: 833-840
- Stich B, Melchinger AE, Frisch M, Maurer HP, Heckenberger M, Reif JC, 2005. Linkage disequilibrium

- in European elite maize germplasm investigated with SSRs. *Theor Appl Genet* 111: 723-730
- Taramino G, and Tingey S, 1996. Simple sequence repeats for germplasm analysis and mapping in maize. *Genome* 39: 277-287
- De Freitas Terra TF, Wiethölter P, de Souza Almeida CC, dos Anjos e Silva SD, Bered F, de Melo Sereno MJC, Neto JFB, 2011. Genetic variability in maize and teosinte populations estimated by microsatellites markers. *Cienc Rural* 4: 205-211
- Teng WT, Cao JS, Chen YH, Liu XH, Jing XQ, Zhang FJ, Li JS, 2004. Analysis of maize heterotic groups and patterns during past decade in China. *Scientia Agricultura Sinica* 37: 1804-1811(in Chinese with English abstracts)
- Tian HL, Wang FG, Zhao JR, Yi HM, Wang L, Wang R, Yang Y, Song W, 2015. Development of maizeSNP3072, a high-throughput compatible SNP array, for DNA fingerprinting identification of Chinese maize varieties. *Mol Breeding* 35: 136
- Wang RH, Yu YT, Zhao JR, Shi YS, Song YC, Wang TY, Li Y, 2008. Population structure and linkage disequilibrium of a mini core set of maize inbred lines in China. *Theor Appl Genet* 17: 1141-1153
- Wang YB, Wang ZH, Wang YP, Zhang X, Lu LX, 1998. Division, utilization and the improvement of main germplasm heterosis of maize in China. *Acta Agriculture Boreali-Sinica* 13: 74-80
- Warburton ML, Xia XC, Crossa J, Franco J, Melchinger AE, Frisch M, Bohn M, and Hoisington D, 2002. Genetic characterization of CIMMYT inbred maize lines and open-pollinated populations using large-scale fingerprinting methods. *Crop Sci* 42: 1832-1840
- Wu YS, Vicente FS, Huang KJ, Dhliwayo T, Costich DE, Semagn K, Sudha N, Olsen M, Prasanna BM, Zhang XC, Babu R, 2016. Molecular characterization of CIMMYT maize inbred lines with genotyping-by-sequencing SNPs. *Theor Appl Genet* 129: 753-765
- Xie CX, Marilyn W, Li MS, Li XH, Xiao MJ, Hao ZF, Zhao Q, Zhang SH, 2008. An analysis of population structure and linkage disequilibrium using multilocus data in 187 maize inbred lines. *Mol Breed* 21: 407-418
- Yang XH, Yan JB, Shah T, Warburton ML, Li Q, Li L, Gao, YFChai YC, Fu ZY, Zhou Y, Xu ST, Bai GH, Meng YJ, Zheng YP, Li JS, 2010. Genetic analysis and characterization of a new maize association mapping panel for quantitative trait loci dissection. *Theor Appl Genet* 121: 417-431
- Yu JJ, Buckler ES, 2006. Genetic association mapping and genome organization of maize. *Curr Opin Biotechnol* 17: 155-160
- Yuan LX, Fu JH, Zhang SH, Liu XZ, Peng ZB, Li XH, 2001. Heterotic grouping of maize inbred lines using RFLP and SSR markers. *Acta Agronomica Sinica* 27: 149-156 (in Chinese with English abstracts)
- Zhao JR, Guo JL, Guo Q, Yu DM, Kong YF, 1999. Heterotic grouping of 25 maize inbreds with RAPD markers. *Acta Agriculture Boreali-Sinica* 14: 32-37 (in Chinese with English abstracts)