

2015

A Changing Casco Bay-Onshore, Offshore, New Shores (2015 State of the Bay Presentation)

Charlie Colgan
Center for the Blue Economy

Follow this and additional works at: <https://digitalcommons.usm.maine.edu/cbep-presentations>

Recommended Citation

Colgan, C. (2015). A Changing Casco Bay-Onshore, Offshore, New Shores (2015 State of the Bay Presentation). [Presentation slides]. Portland, ME: University of Southern Maine, Muskie School of Public Service, Casco Bay Estuary Partnership. Retrieved from:

This Book is brought to you for free and open access by the Casco Bay Estuary Partnership (CBEP) at USM Digital Commons. It has been accepted for inclusion in Presentations by an authorized administrator of USM Digital Commons. For more information, please contact jessica.c.hovey@maine.edu.



A Changing Casco Bay:

Onshore
Offshore
New Shores

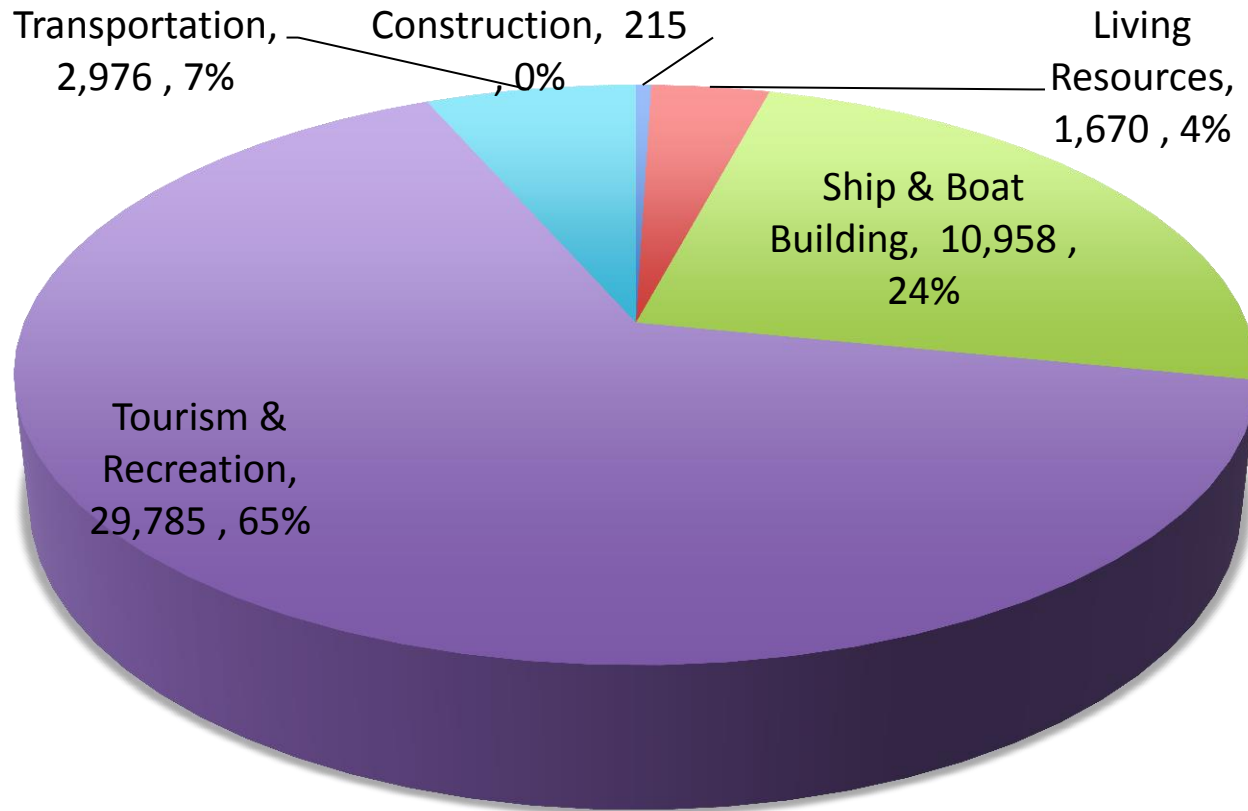
Charles S. Colgan PhD

**Center for the Blue Economy
Middlebury Institute of
International Studies**

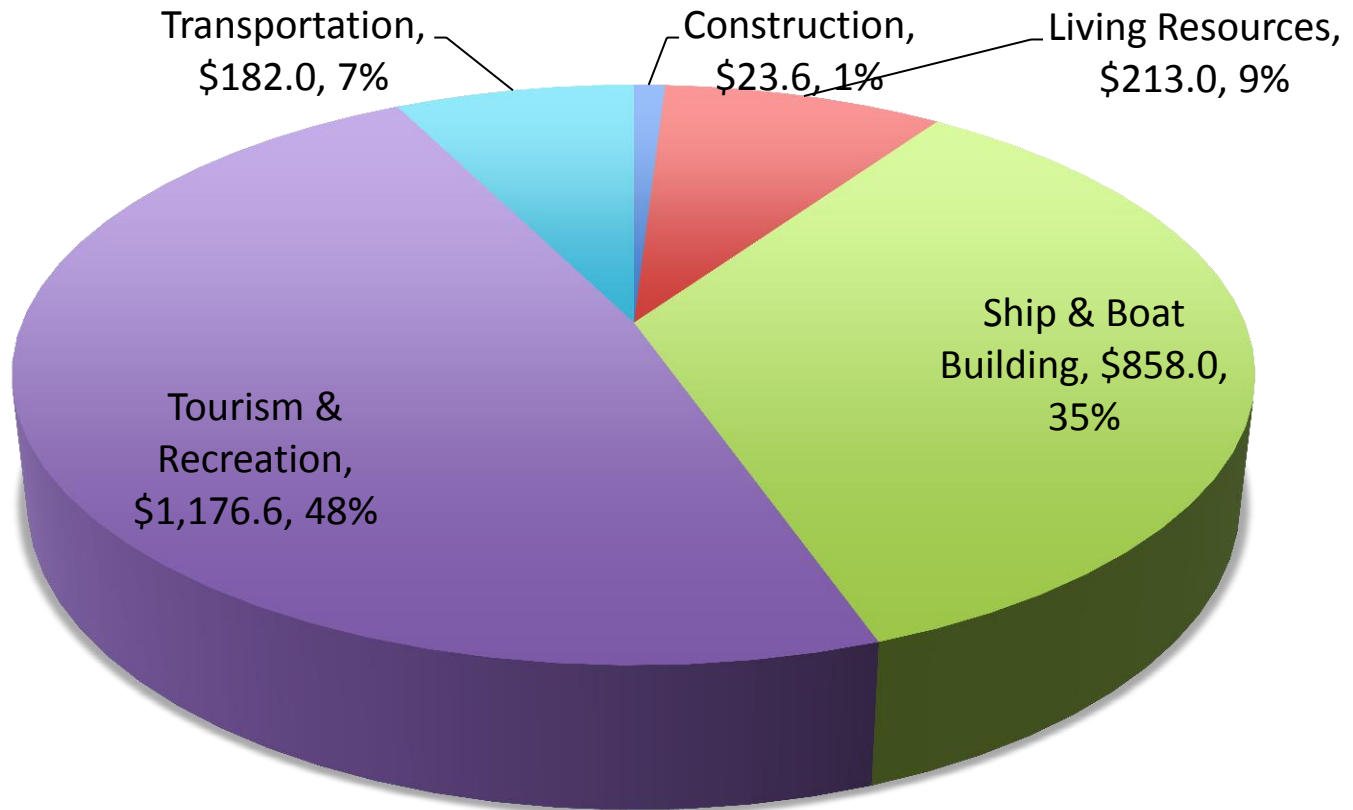
**Professor Emeritus
Muskie School
University of Southern Maine**



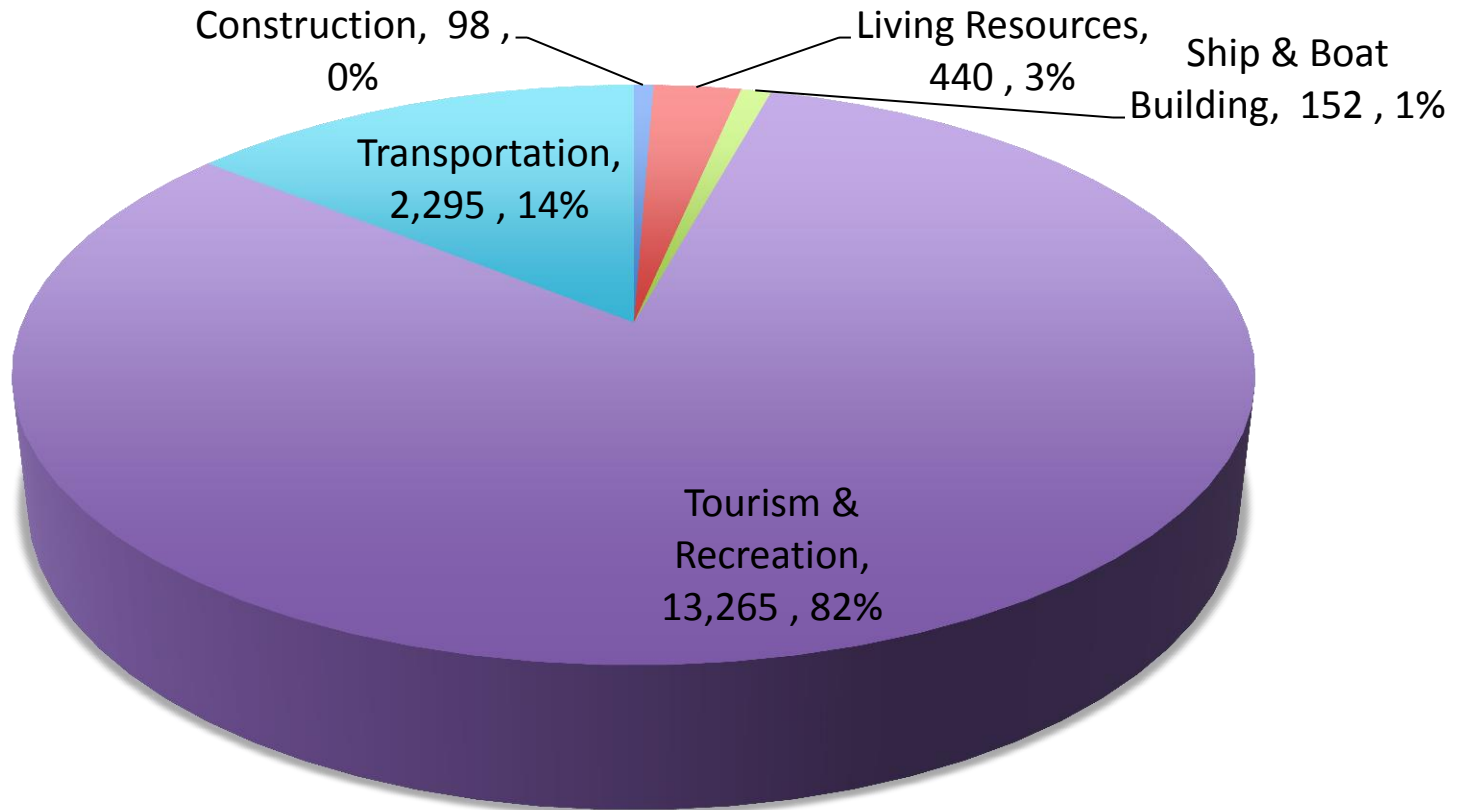
Maine 2012 Ocean Economy Employment



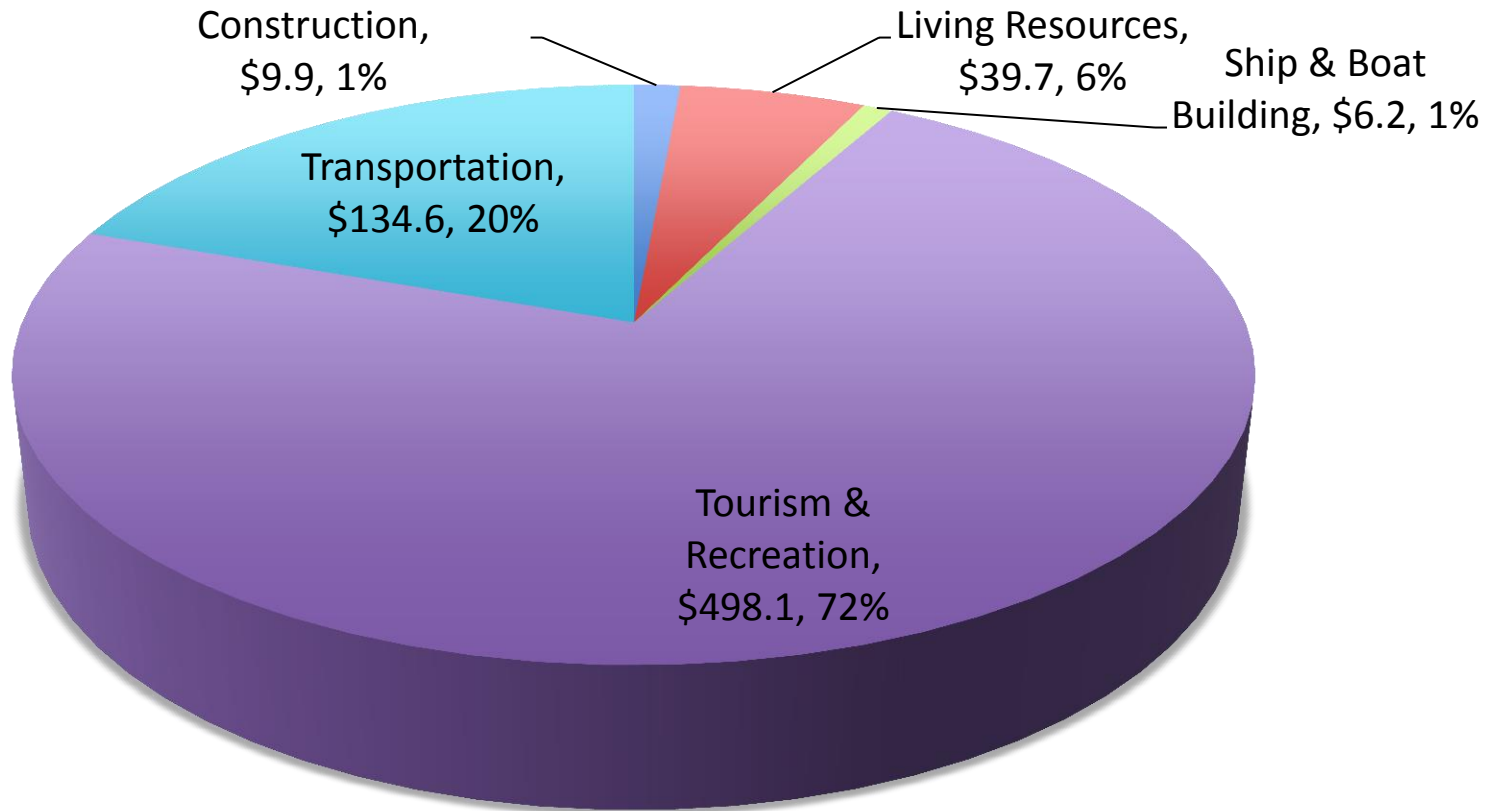
Maine Ocean Economy GDP (\$Millions) 2012



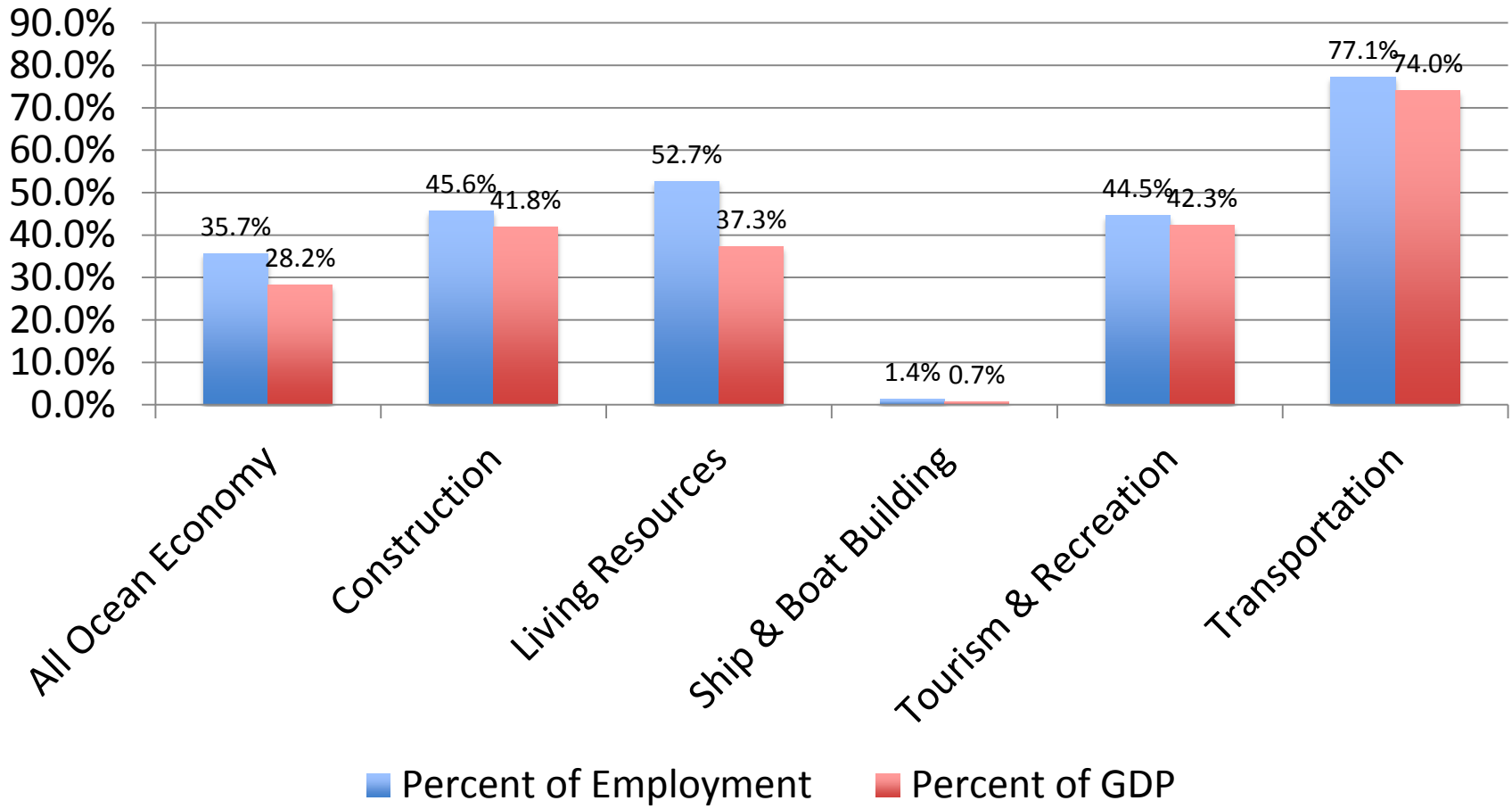
Cumberland County Ocean Economy Employment 2012



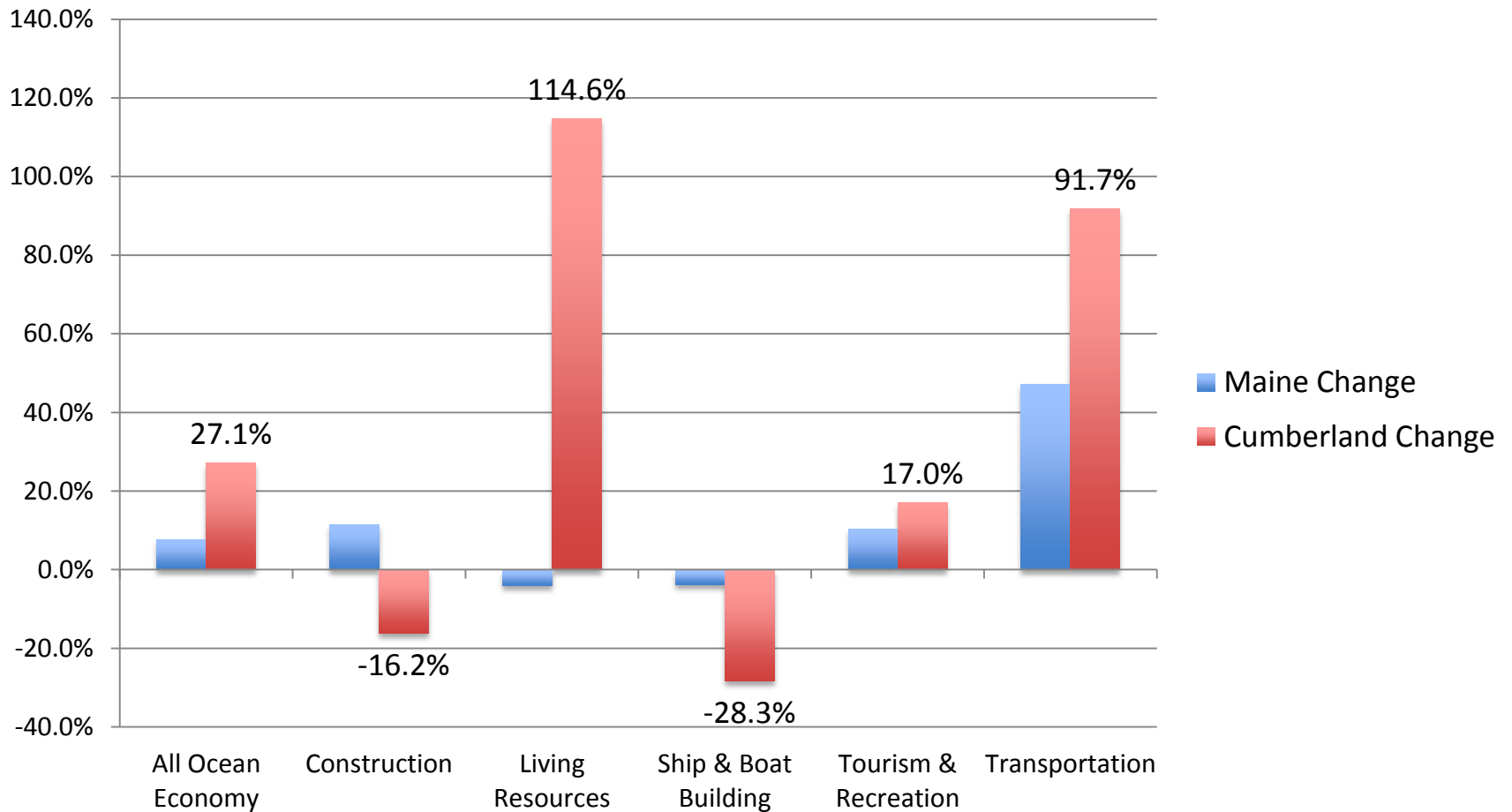
Cumberland County Ocean Economy GDP (\$ Millions) 2012



Casco Bay Accounts for about a third of Maine's Ocean Economy, but nearly half or more in most of the sectors

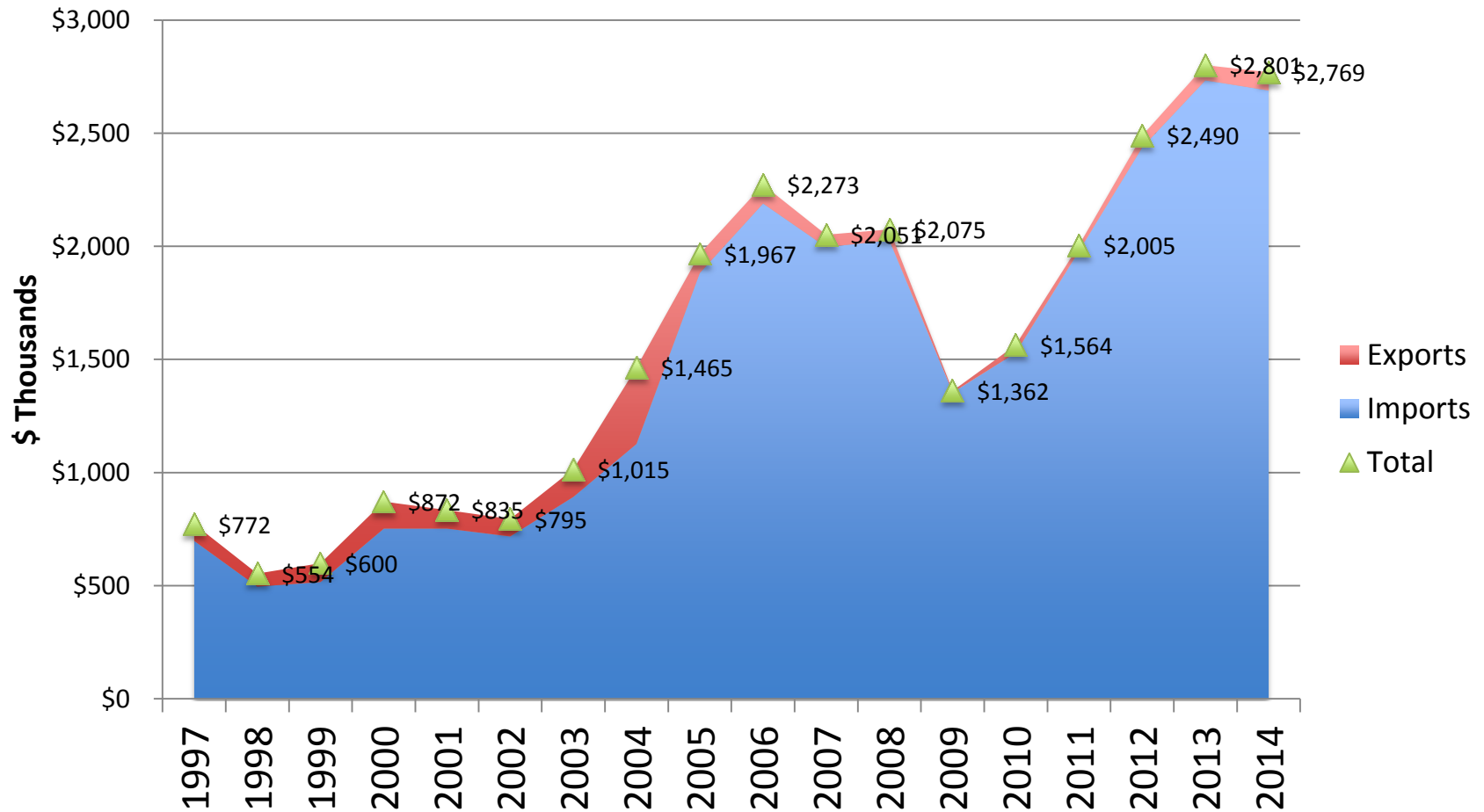


Except in Marine Construction, Cumberland County's Ocean Economy Outperformed Maine in employment growth 2005-2012

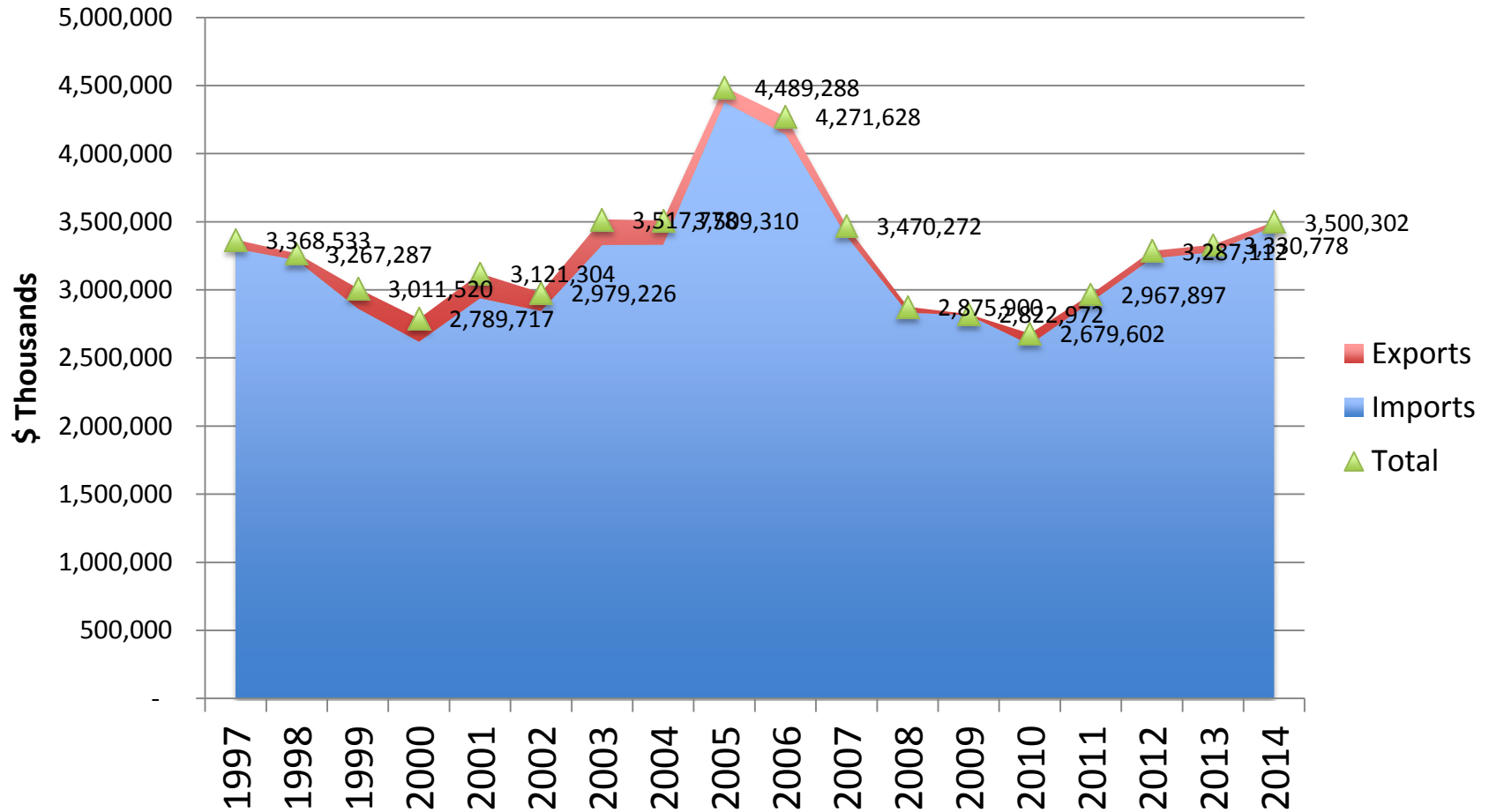




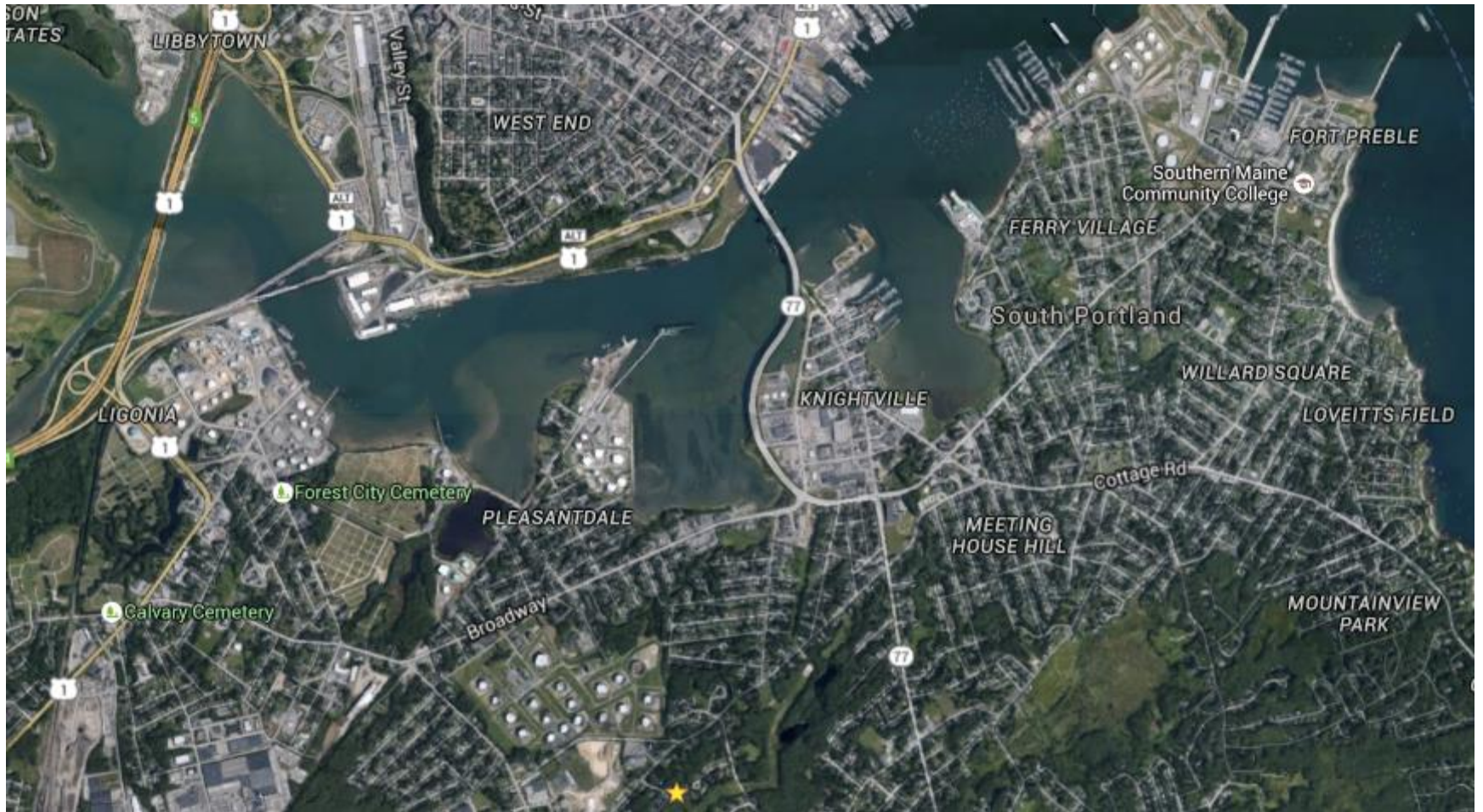
Bulk/Break Bulk Value in Portland



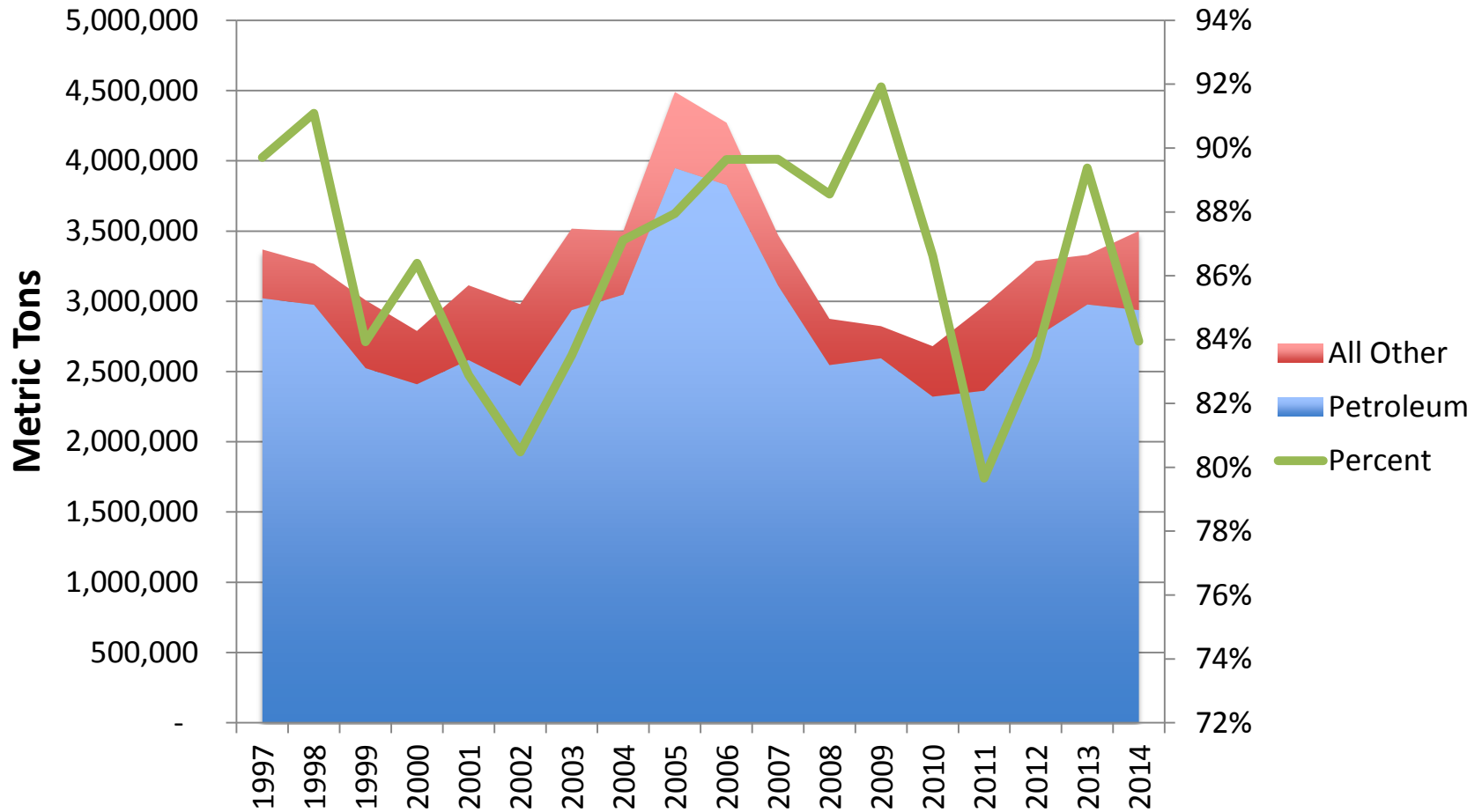
Bulk/Brea Bulk Metric Tons in Portland

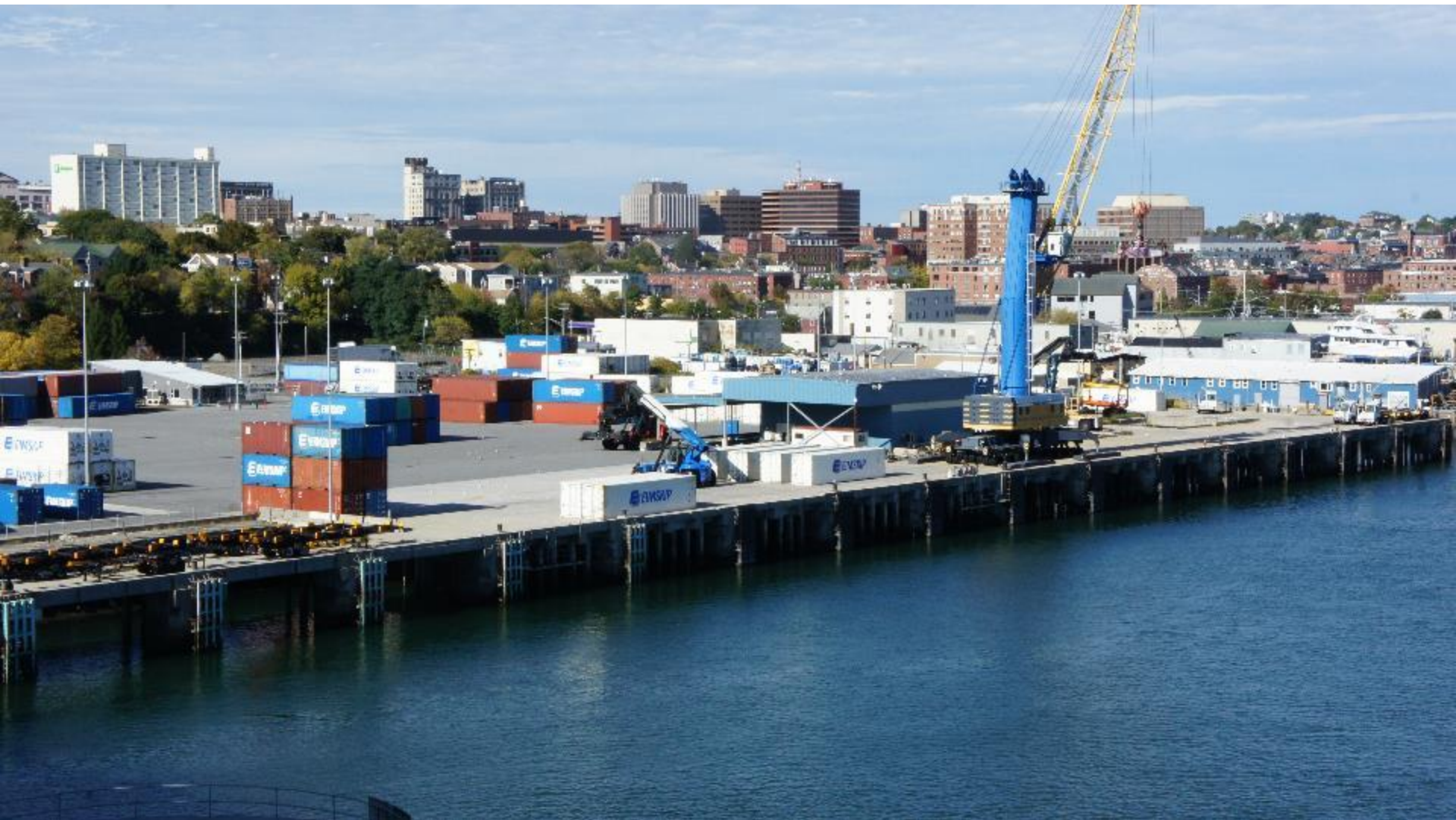


Casco Bay and Petroleum

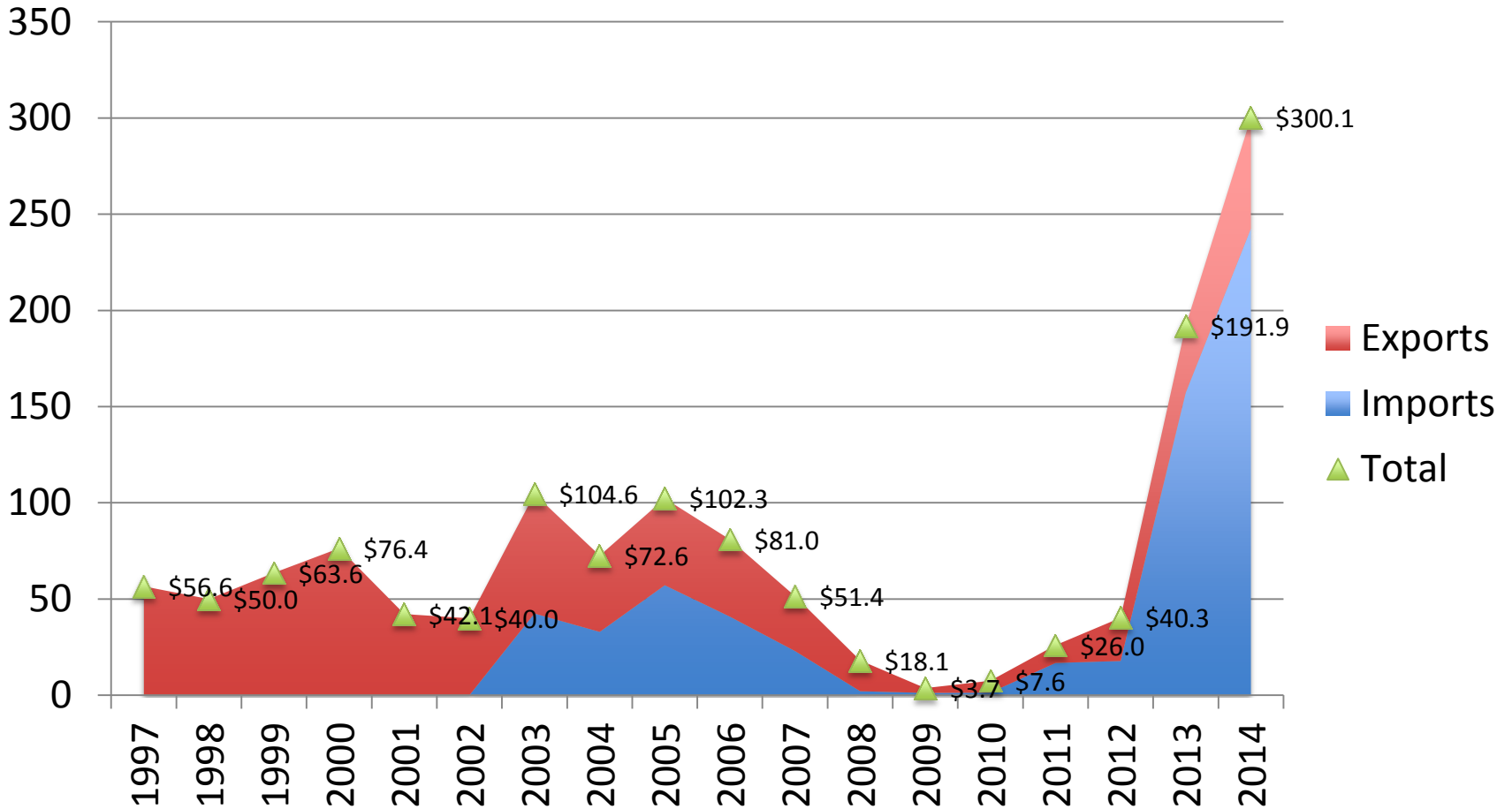


The Changing Role of Petroleum

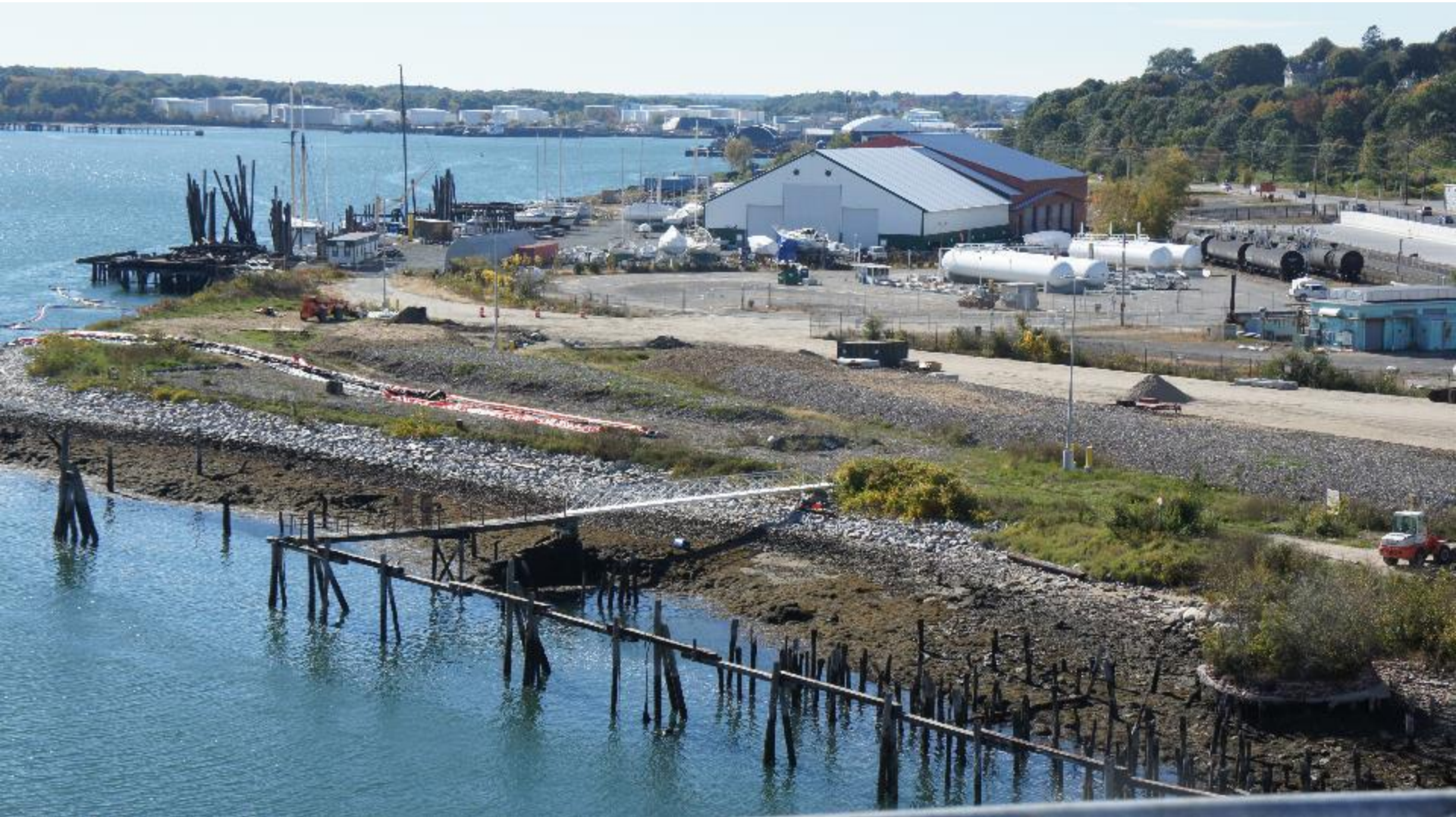




Container Value



A long time coming...

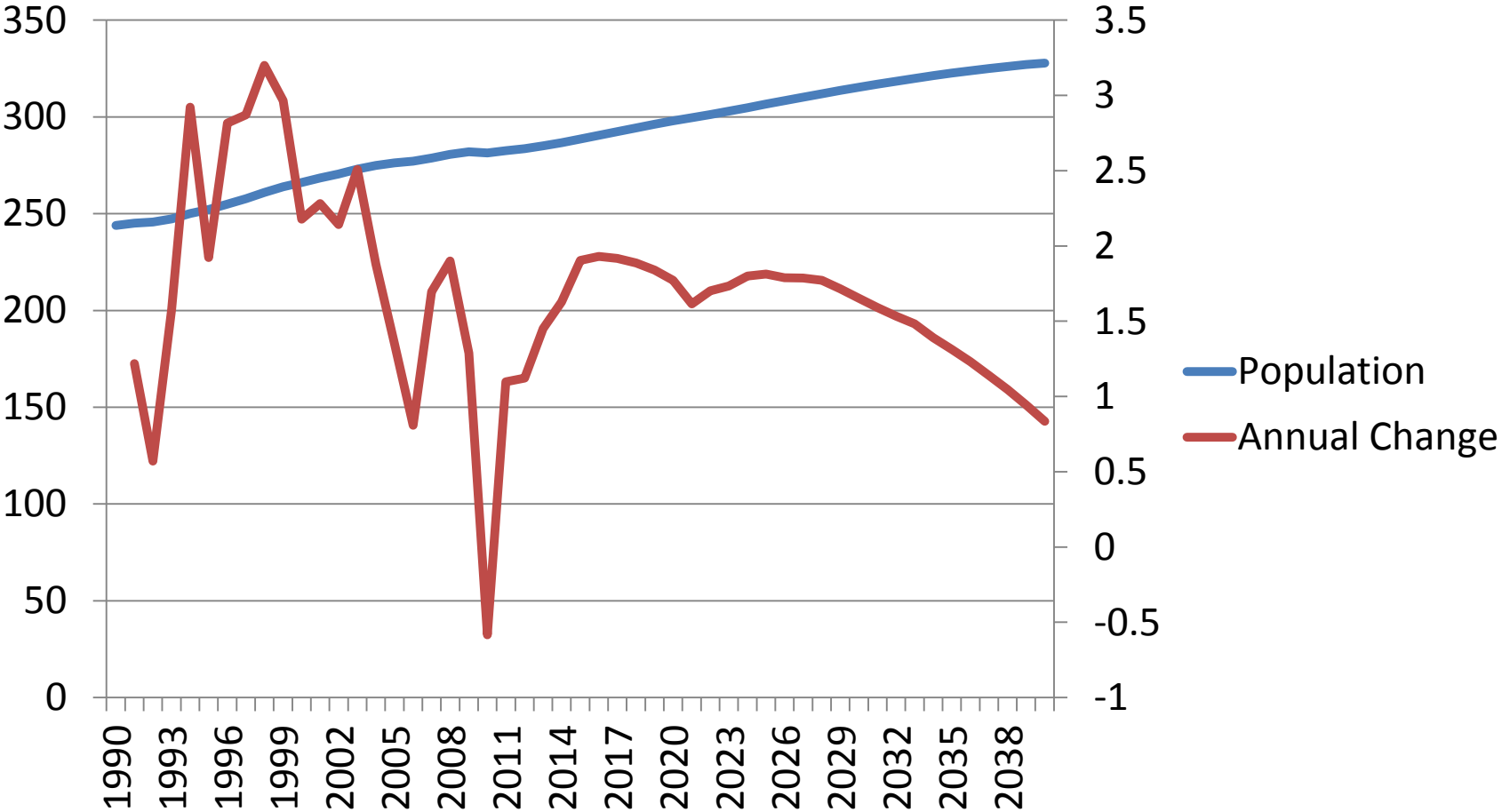


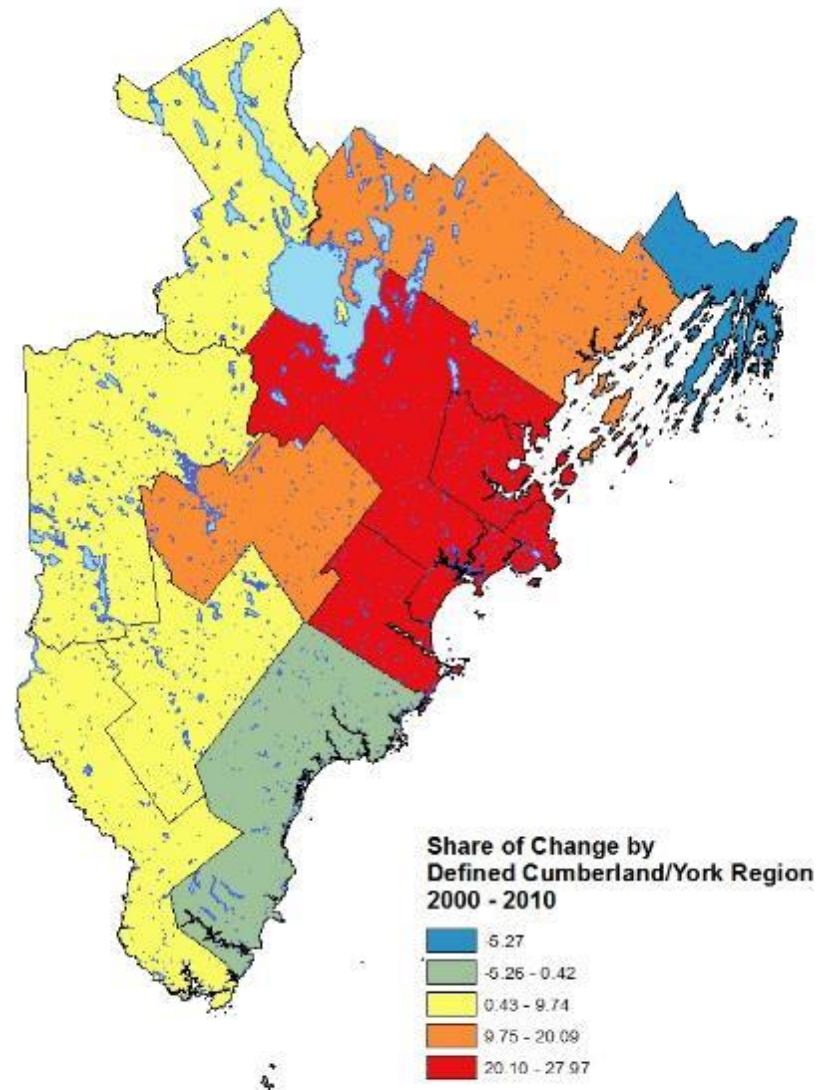
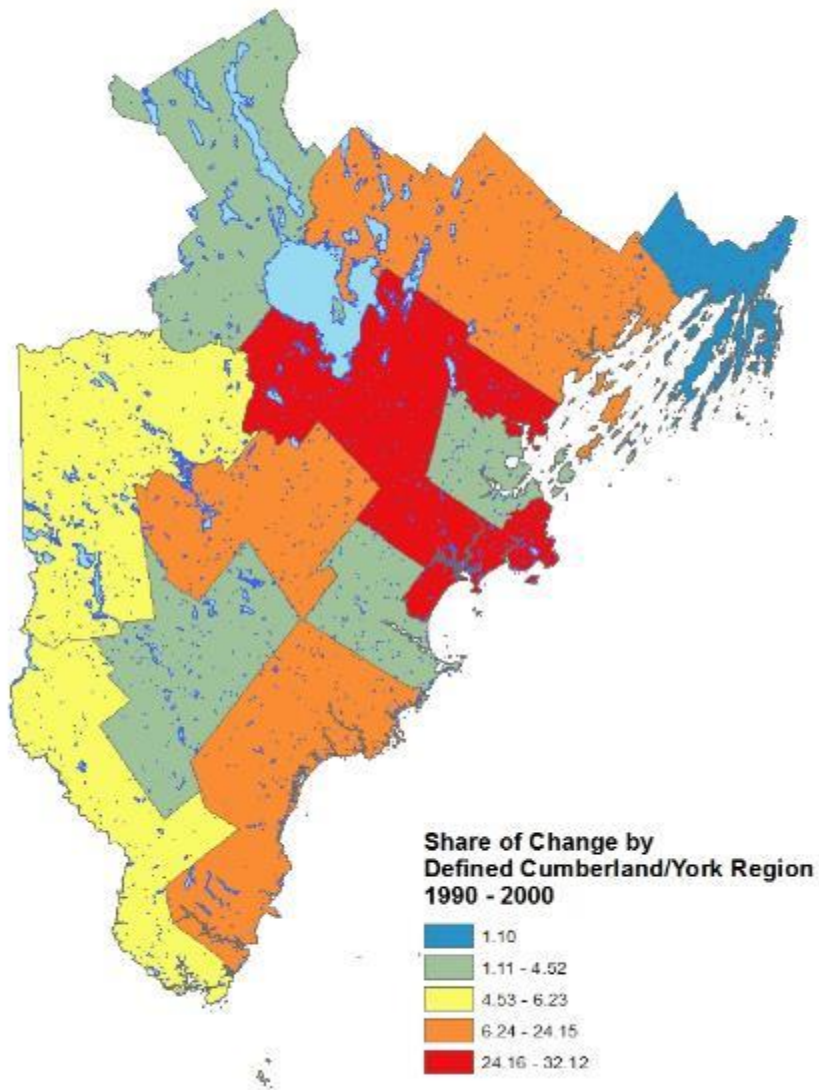


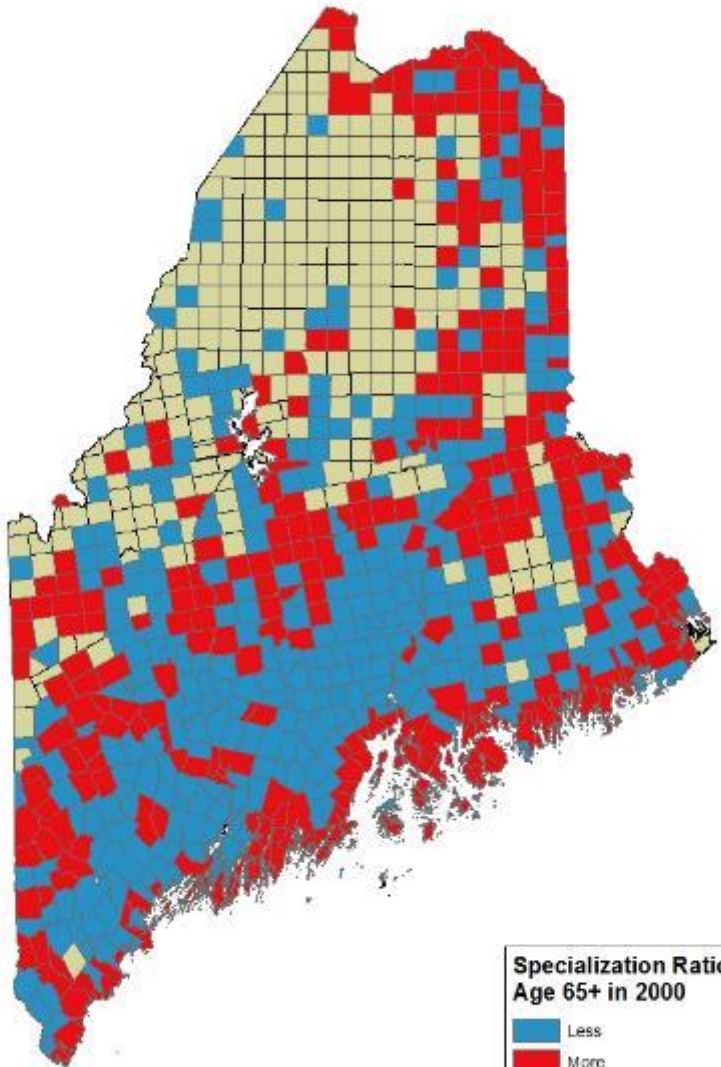
A Changing Population



Slowing population growth in Cumberland County- and it all depends on in-migration

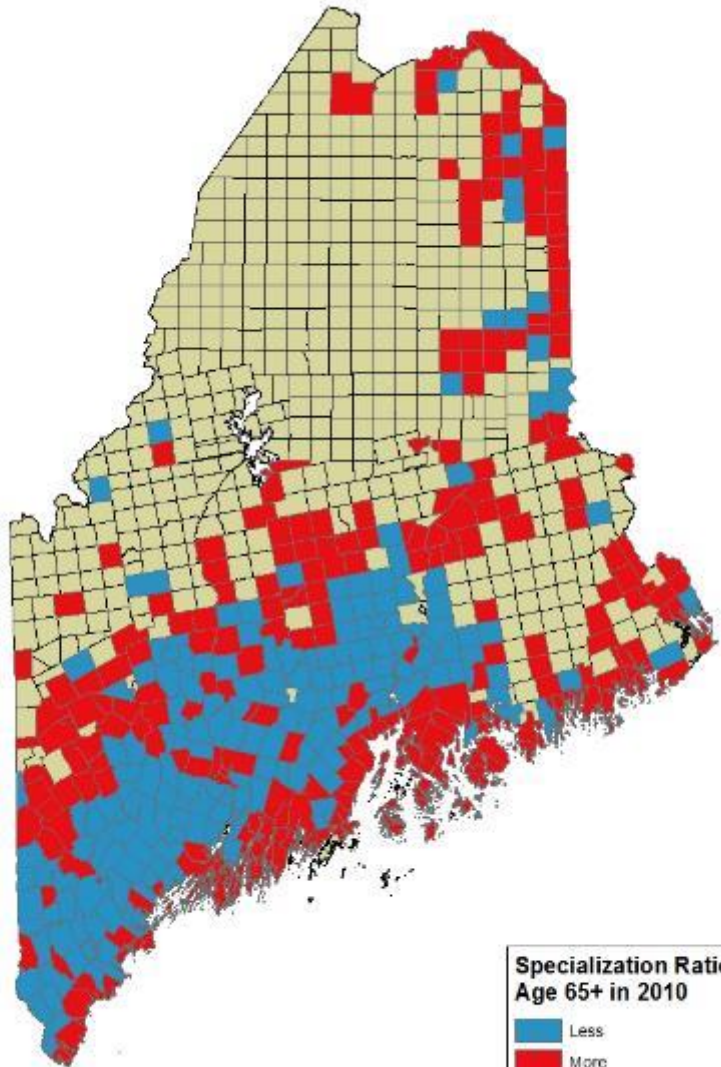






**Specialization Ratio
Age 65+ in 2000**

- Less
- More
- No Data



**Specialization Ratio
Age 65+ in 2010**

- Less
- More
- No Data





Franklin

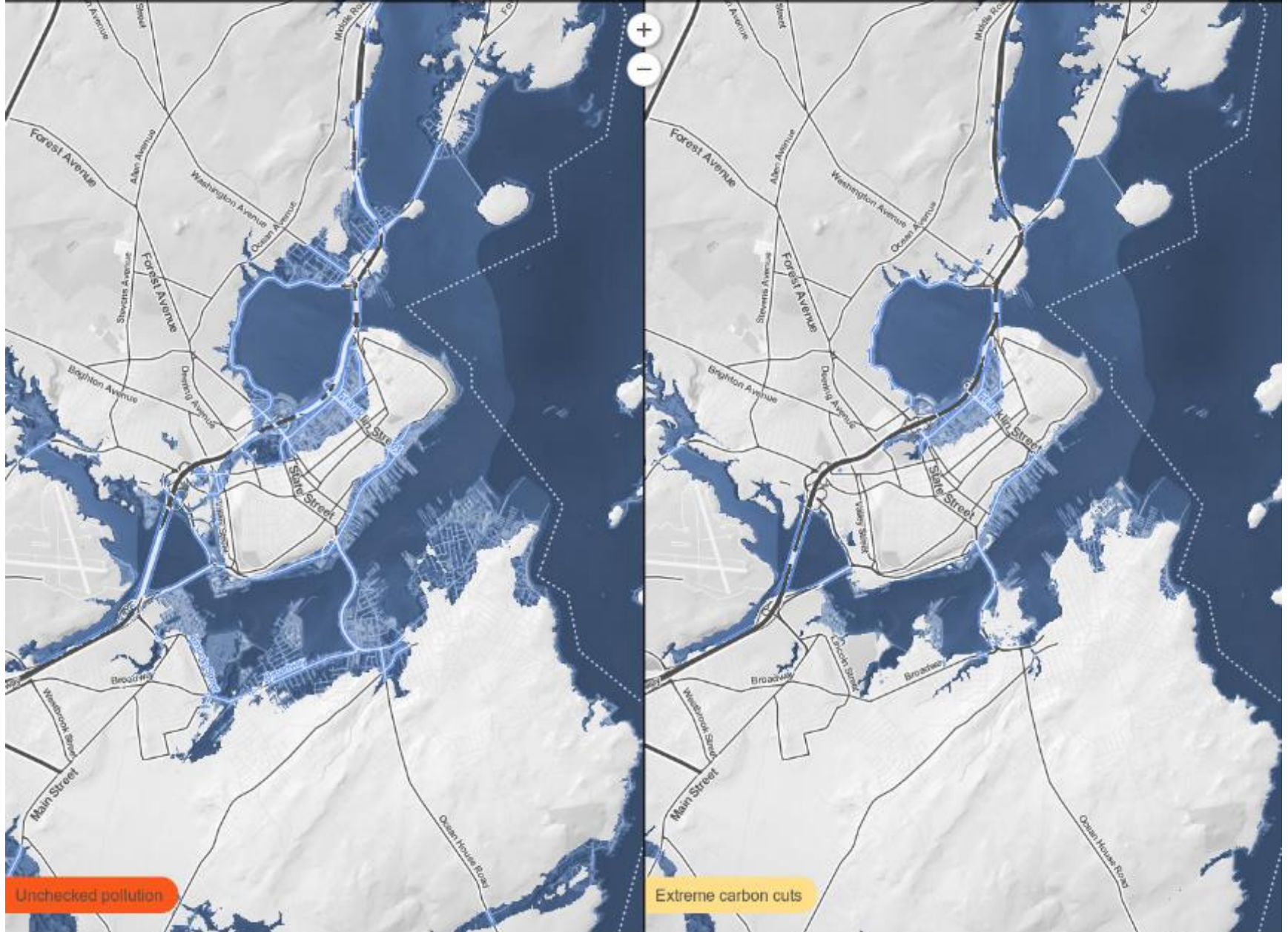


Enter a U.S. city or zip



Which sea level will we lock in?

When will this happen?



Unchecked pollution

Extreme carbon cuts

Choices

- No action
- Fortify
 - Hard v. Soft Armoring
- Accommodate
 - Elevate – flood proof
 - Changing Temperatures and Chemistry
- Retreat
 - Anticipate v. respond

Who will pay?

- Adaptation in existing investment streams
- Insurance
 - Self insurance
 - Flood Insurance
 - Disaster Relief
- Innovative Approaches
 - TIF's
 - Green Bonds

Next Steps for CBEP

- Restoration = soft armoring
- Conserving shoreland for buffer, upland for retreat
- Managing a wetter environment in the urban core
- Continuing demand for recreation
- Define “health” in the context of a changing bay- and a changing population and economy that depends on the bay