

1-1-1961

# Geologic map of the Milbridge - Whitneyville area, Maine

Richard A. Gilman

Follow this and additional works at: [https://digitalmaine.com/geo\\_docs](https://digitalmaine.com/geo_docs)

---

## Recommended Citation

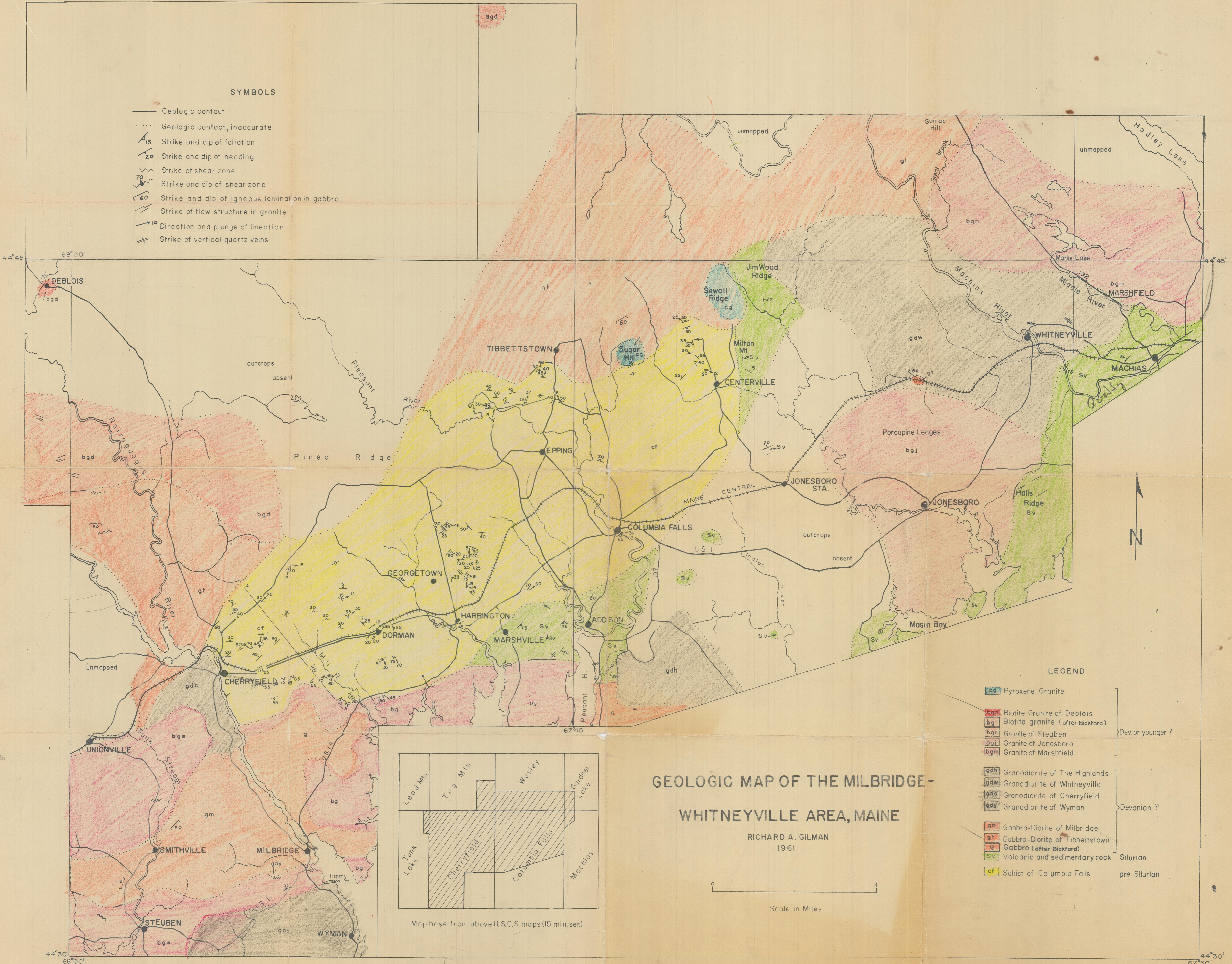
Gilman, Richard A., "Geologic map of the Milbridge - Whitneyville area, Maine" (1961). *Geology Documents*. 36.  
[https://digitalmaine.com/geo\\_docs/36](https://digitalmaine.com/geo_docs/36)

This Text is brought to you for free and open access by the Geological Survey at Digital Maine. It has been accepted for inclusion in Geology Documents by an authorized administrator of Digital Maine. For more information, please contact [statedocs@maine.gov](mailto:statedocs@maine.gov).



**SYMBOLS**

- Geologic contact
- ..... Geologic contact, inaccurate
- $\swarrow 15$  Strike and dip of foliation
- $\swarrow 20$  Strike and dip of bedding
- $\swarrow$  Strike of shear zone
- $\swarrow 70$  Strike and dip of shear zone
- $\swarrow 60$  Strike and dip of igneous lamination in gabbro
- $\swarrow$  Strike of flow structure in granite
- $\rightarrow 10$  Direction and plunge of lineation
- $\times$  Strike of vertical quartz veins

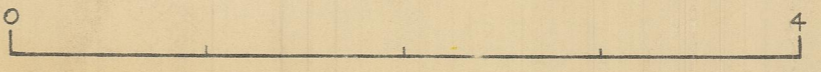


**LEGEND**

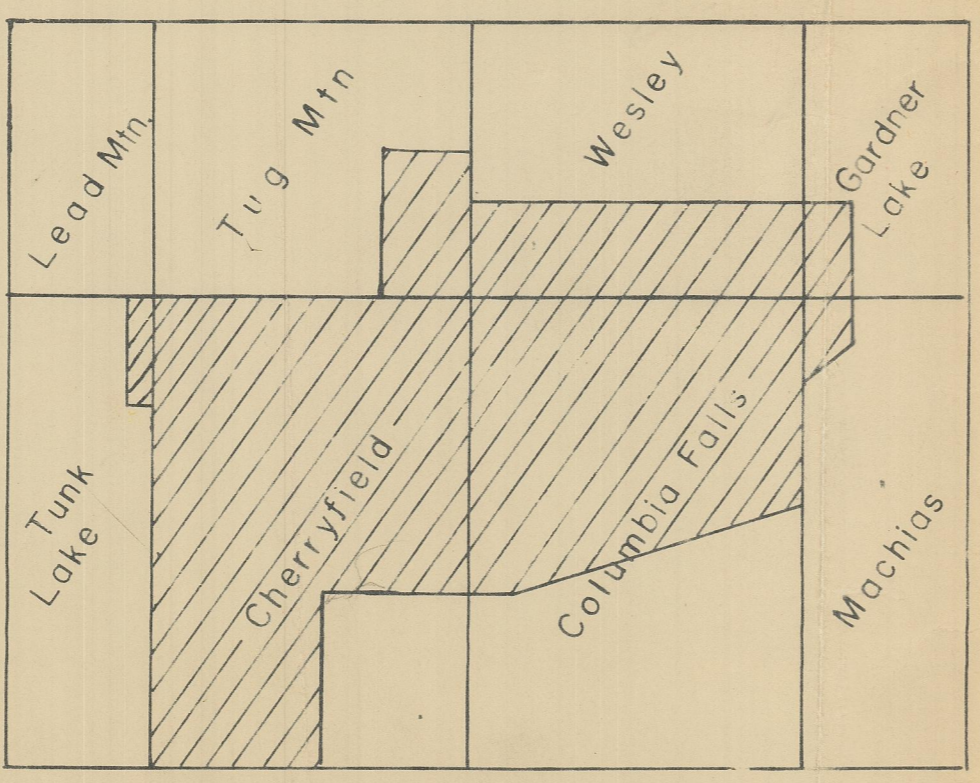
- bg Pyroxene Granite
- bgd Biotite Granite of DeBlois
- bg Biotite granite (after Bickford)
- bgs Granite of Steuben } Dev or younger ?
- bgj Granite of Jonesboro
- bgm Granite of Marshfield
- gdh Granodiorite of The Highlands
- gdw Granodiorite of Whitneyville
- gdc Granodiorite of Cherryfield
- gdy Granodiorite of Wyman } Devonian ?
- gm Gabbro-Diorite of Milbridge
- gt Gabbro-Diorite of Tippetstown
- g Gabbro (after Bickford)
- sv Volcanic and sedimentary rock } Silurian
- cf Schist of Columbia Falls } pre Silurian

**GEOLOGIC MAP OF THE MILBRIDGE-  
WHITNEYVILLE AREA, MAINE**

RICHARD A. GILMAN  
1961



Scale in Miles



Map base from above U.S.G.S. maps (15 min ser.)

44°45' 68°00' DEBLOIS  
44°45' 68°00' TIBBETSTOWN  
44°45' 68°00' CENTERVILLE  
44°45' 68°00' JONESBORO  
44°45' 68°00' WHITNEYVILLE  
44°45' 68°00' MACHIAS  
44°45' 68°00' GEORGETOWN  
44°45' 68°00' HARRINGTON  
44°45' 68°00' DORMAN  
44°45' 68°00' MARSHVILLE  
44°45' 68°00' ADDISON  
44°45' 68°00' COLUMBIA FALLS  
44°45' 68°00' CHERRYFIELD  
44°45' 68°00' UNIONVILLE  
44°45' 68°00' SMITHVILLE  
44°45' 68°00' MILBRIDGE  
44°45' 68°00' STEUBEN  
44°45' 68°00' WYMAN  
44°45' 68°00'