

Dose variation due to change in planned position for patients with carcinoma of the cervix undergoing high-dose-rate brachytherapy- 2D dose analysis

Anil Kumar Talluri¹, Aparna Reddy Yarrama², Shabbir Ahamed¹, Deleep Kumar Gudipudi¹, NVN Madhusudhana Sresty¹, Krishnam Raju Alluri¹, Lakshmi Venkataramana Puriparthi¹

¹Department of Radiotherapy, Basavatarakam Indo American Cancer Hospital & Research Institute, Hyderabad, India

²Department of Physics, Jawaharlal Nehru Technological University, Hyderabad, India

Received December 02, 2014; Revised January 13, 2015; Accepted January 15, 2015; Published Online January 30, 2015

Original Article

Abstract

Purpose: To assess the dosimetry to organs at risk (OARs) in lithotomy position with a planned time-dose pattern obtained from supine position. **Methods:** The sample consists of thirty patients with carcinoma of the uterine cervix, Stage II and III. Patients often feel discomfort in supine position (*S* position) when compared to lithotomy position (*M* position) due to relaxation of pelvic floor muscles after the insertion of applicator (tandem and ovoids) or before delivery of the treatment. Each patient was imaged with orthogonal X-ray radiographs simultaneously in two positions, i.e. *S* position and *M* position. Dwell time and dwell position pattern obtained from the optimized plan in *S* position was used to generate plan in *M* position. Following dose reference points (point A, pelvic wall points, bladder points, rectal, anorectum (AR point) and rectosigmoid (RS point) points) were identified for analysis in *S* and *M* positions. The dosimetric data for reference points generated by the Brachyvision TPS was analyzed. **Results:** Pelvic wall points registered lower doses in *M* position when compared to *S* position. Mean doses for right pelvic wall point (RPW) and left pelvic wall point (LPW) were reduced by -10.02 % and -11.5% in *M* position, respectively. International Commission on Radiation Units and Measurements (ICRU) bladder point also registered lower doses in *M* position with a mean dose of -6.8%. Rectal point showed dose reduction by mean of -6.4%. AR and RS points showed an increased dose in *M* position by a mean of 16.5% and 10%, respectively. **Conclusion:** Current dosimetry procedure serves as a model with time-dose pattern planned for *S* position, but delivered in *M* position, without dose optimization. Prioritization of comfort and position can be considered in conjunction with optimization of dose.

Keywords: Supine; Lithotomy; Time Dose Pattern; Bladder; Rectum

Introduction

Carcinoma of the uterine cervix is a radiosensitive tumour. Radiotherapy is primary modality of treatment in locally advanced uterine cervix cancers. Intracavitary brachytherapy (ICBT) along with external beam radiotherapy (EBRT) are essential components of cervical cancer management. ICBT has a high therapeutic index by delivering high dose to the tumour and lower doses to adjacent organs (without increase in toxicity), resulting in increased local control and survival.¹⁻⁴ Radiotherapy is a multi-stage, complex procedure requires high level of accuracy at each stage to achieve maximum tumour control with minimum normal tissue complications.

High dose rate (HDR) brachytherapy is comparable to low dose rate (LDR) brachytherapy in treatment of uterine cervix cancers. The advantages of HDR over LDR brachytherapy have been extensively reviewed.⁵⁻⁸ Since HDR brachythera-

py is fractionated, treatment planning and dose optimization is recommended for each fraction for the following reasons. First, the anatomy of the region (uterine cervix and upper vagina) changes during the course of irradiation. Second, geometry of the applicators changes as a consequence of the differences in vaginal packing and anatomical position of the patient.⁹⁻¹⁵ As a result every parameter that influences the treatment should be thoroughly studied.

Cancer uterine cervix patients often feel discomfort during intracavitary brachytherapy application procedure and treatment. Discomfort can be addressed with application under short sedation in supine position (*S* position), which is the usual anatomical position for treatment delivery. This discomfort is reduced for some patients in lithotomy position (*M* position) because of the relaxation of muscles of the pelvis. Adopting lithotomy position requires repetition of the

Corresponding author: Anil kumar Talluri; Department of Radiotherapy, Basavatarakam Indo American Cancer Hospital & Research Institute, Hyderabad, India.

Cite this article as: Talluri AK, Yarrama AR, Ahamed S, Gudipudi DK, Sresty NVN, Alluri KR, Puriparthi L. Dose variation due to change in planned position for patients with carcinoma of the cervix undergoing high-dose-rate brachytherapy- 2D dose analysis. *Int J Cancer Ther Oncol* 2015; 3(1):030121.
DOI: 10.14319/ijcto.0301.21

change in anatomical position (**Figure 3**). Data normality was assessed using the Kolmogorov-Smirnov test and statistical analysis was performed using the software SAS version 9.4 (SAS Institute., Inc., Cary, NC). *P*-values were calculated with Student's paired *t* test.

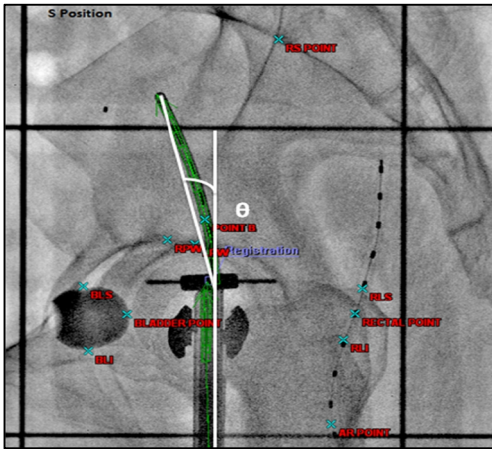


FIG.3: Pitch of the applicator with respect to external template field.

Results

The dosimetric data of dose reference points generated by the Brachyvision TPS was analyzed. The relative variation of doses in two anatomical positions is expressed as ratio of dose difference between *M* and *S* positions to dose in *S* position. A positive value indicates higher dose in *M* position and a negative value indicates a lower dose. Out of 30 patients, 23 patients received 7 Gy, 3 patients received 6.5 Gy, and 4 patients received 6 Gy, per fraction. Point A exhibited a little dose difference in two positions with a range from -6.9% to 5.4% and a mean of 0.3%.

TABLE 1: The mean dose differences between TPS values in *M* and *S* positions as percentage of values obtained with patient in *S* position.

Point/ OAR	Mean dose difference	<i>p</i> value
RPW	-10.02	<0.001
LPW	-11.5	<0.001
Bladder point	-6.8	<0.001
Rectal point	-6.4	0.007
AR point	16.5	<0.001
RS point	10.0	<0.001

Pelvic wall points registered lower doses in *M* position when compared to *S* position. For the right pelvic wall point (RPW), the mean dose was -10.02% with a range from 7.7% to -28.2%. For the left pelvic wall point (LPW), the mean dose was -11.5% with a range from 5.2% to -29.7%. ICRU bladder point also registered lower doses in *M* position with a range from 5.2% to -29.7% with a mean dose of -6.8%. Rectal point showed reduction in dose by mean of -6.4% with a range from -26.9% to 15.1%. Anorectal junction point and Rectosigmoid point showed an increased dose in *M* position by a mean of 16.5% with a range from -2.58% to 34.1%

and with a mean of 10% with a range from -19.4% to 32.5%, respectively.

Discussions

The main aim of the study was to assess the change in dosimetry due to change in patients' anatomical position. In the present study, 60 plans on thirty patients with two plans per patient in *S* and *M* positions were created and analyzed. Different treatment positions are evaluated in both external beam therapy²¹⁻²³ and brachytherapy²⁴⁻²⁷ for treatment of various sites. In case of brachytherapy there are studies on the use of template based standard plans versus individualized plans and pre-prepared treatment plans for curved structures such as esophagus.²⁸ There are few studies which evaluated variability of position of ring and tandem applicators²⁹⁻³⁰ in ICBT in cancer cervix patients. Vaginal cuff irradiation is well studied with change in applicator angle³² and patients position.³³ This study is one of the very few studies done till date to evaluate dosimetric variations in different anatomical positions in cervical cancer patients when treated with tandem and ovoid applicator.

To characterize the applicator orientation changes additional dose reference points are added for rectum and bladder points and analyzed. Analysis of posterior reference points shows increase of dose in craniocaudal direction from RS point till inferior rectal point (RLI) (**Figure 4**). RS and AR points receive lower doses compared to rectal points as they are located at the extreme ends of the source arrangement. From **Figure 4** it can be inferred that the dose to posterior points follows a similar trend for both positions. However, higher doses are observed for rectal points in *S* position and RS and AR points in *M* position. Among the anterior reference points, bladder superior point (BLS) shows a decrease in dose in *S* position and bladder inferior point (BLI) dose is higher in *M* position. Rearrangement in applicator-anatomy was observed from *S* position to *M* position, as same dwell time pattern is adopted for both positions. It was observed that in *M* position posterior points registered relatively flatter values as compare to *S* position. **Figure 5** shows the mean dose variations of anterior reference points. Dose decreased to BLS point by a mean of -9.8% and an increase in dose to BLI point by 2.9% was observed in *M* position. Tandem rotation towards posterior structures in *M* position was observed with tip of the tandem drifting away from BLS point resulting in higher dose to BLS point. The mean difference in rotations was 10° between two positions and consequently the mean dose to RS and AR points were increased in *M* position. Previous studies measured translational shifts only in anterior-posterior direction²⁶ or in other applicator geometry such as ring and tandem for one anatomical position i.e., supine only.³⁰⁻³¹ Rotational shift associated with change in applicator angle was reported by Hoskins *et al.*³² and is about 20°. The higher degree of rotation reported in their study may be due to single line source used for vaginal cuff

brachytherapy. This is not the case with tandem and ovoid pair applicators used for cancer of cervix and the rotation reported in this case is not comparable to that for vault brachytherapy.

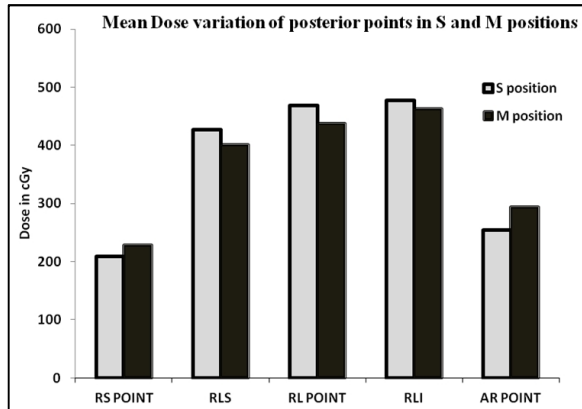


FIG. 4: Mean dose variation of posterior points in *S* and *M* positions.

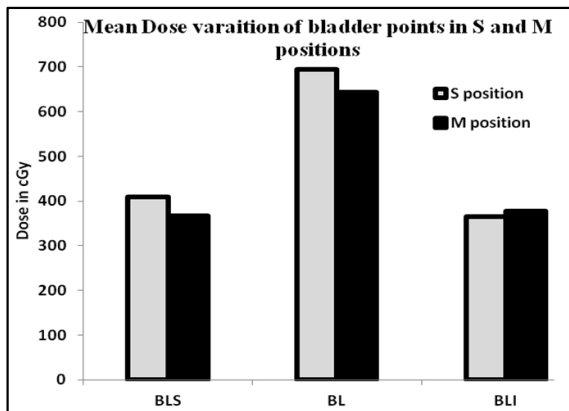


FIG. 5: Mean dose variation for bladder points in *S* and *M* positions.

The consequences of transposing dwell pattern to *M* position are summarized. Dose to RS and AR points maximized in most of the cases. Both these points recorded a maximum of 30%. Pelvic wall points, on the contrary, recorded a minimum, close to 30%. Similarly, reduction in dose to BLS point was compromised with a higher dose to BLI point. However, the mean dose to the bladder and rectum points was on the lower side which is a favourable result.

Conclusion

This study presents a case scenario, evaluating lithotomy position for dosimetry of various OARs. We conclude that reduction in dose to bladder and rectum is compromised with elevated doses to rectosigmoid and anorectal points. The current dosimetry procedure serves as a future model and can be correlated with a patient treated with time-dose pattern planned for *S* position, but delivered in *M* position, without dose optimization. Prioritization of comfort and position can be taken seriously but in conjunction with op-

timization of dose. Further studies in this respect with 3D planning are needed to add to the literature.

Conflict of interest

The authors declare that they have no conflicts of interest. The authors alone are responsible for the content and writing of the paper.

References

1. Atahan IL, Onal C, Ozyar E, et al. Long-term outcome and prognostic factors in patients with cervical carcinoma: a retrospective study. *Int J Gynecol Cancer* 2007; **17**:833-42.
2. Nag S, Cardenes H, Chang S, et al. Proposed guidelines for image-based intracavitary brachytherapy for cervical carcinoma: report from Image-Guided Brachytherapy Working Group. *Int J Radiat Oncol Biol Phys* 2004; **60**:1160-72.
3. Nag S. High dose rate brachytherapy: its clinical applications and treatment guidelines. *Technol Cancer Res Treat* 2004; **3**:269-87.
4. Viani GA, Manta GB, Stefano EJ, de Fendi LI. Brachytherapy for cervix cancer: low-dose rate or high-dose rate brachytherapy - a meta-analysis of clinical trials. *J Exp Clin Cancer Res* 2009; **28**:47.
5. Fu KK, Phillips TL. High-dose-rate versus low-dose-rate intracavitary brachytherapy for carcinoma of the cervix. *Int J Radiat Oncol Biol Phys* 1990; **19**:791-6.
6. Orton CG, Seyedsadr M, Somnay A. Comparison of high and low dose rate remote after loading for cervix cancer and the importance of fractionation. *Int J Radiat Oncol Biol Phys* 1991; **21**:1425-34.
7. Petereit DG, Sarkaria JN, Potter DM, Schink JC. High-dose-rate versus low-dose-rate brachytherapy in the treatment of cervical cancer: analysis of tumor recurrence--the University of Wisconsin experience. *Int J Radiat Oncol Biol Phys* 1999; **45**:1267-74.
8. Sarkaria JN, Petereit DG, Stitt JA, et al. A comparison of the efficacy and complication rates of low dose-rate versus high dose-rate brachytherapy in the treatment of uterine cervical carcinoma. *Int J Radiat Oncol Biol Phys* 1994; **30**:75-82.
9. Garipağaoğlu M, Tunçel N, Dalmaz Mg, et al. Changes in applicator positions and dose distribution between high dose rate brachytherapy fractions in cervix carcinoma patients receiving definitive radiotherapy. *Br J Radiol* 2006; **79**:504-9.
10. Hoskin PJ, Cook M, Bouscale D, Cansdale J. Changes in applicator position with fractionated

- high dose rate gynaecological brachytherapy. *Radiother Oncol* 1996; **40**:59-62.
11. Kim RY, Meyer JT, Plott WE, *et al.* Major geometric variations between multiple high-dose-rate applications of brachytherapy in cancer of the cervix: frequency and types of variation. *Radiology* 1995; **195**:419-22.
 12. Datta NR, Kumar S, Das KJ, *et al.* Variations of intracavitary applicator geometry during multiple HDR brachytherapy insertions in carcinoma cervix and its influence on reporting as per ICRU report 38. *Radiother Oncol* 2001; **60**:15-24.
 13. Grigsby PW, Georgiou A, Williamson JF, Perez CA. Anatomic variation of gynecologic brachytherapy prescription points. *Int J Radiat Oncol Biol Phys* 1993; **27**:725-9.
 14. Nag S, Erickson B, Thomadsen B, *et al.* The American Brachytherapy Society recommendations for high-dose-rate brachytherapy for carcinoma of the cervix. *Int J Radiat Oncol Biol Phys* 2000; **48**:201-11.
 15. Wulf J, Popp K, Oppitz U, *et al.* Positional variability of a tandem applicator system in HDR brachytherapy for primary treatment of cervix cancer. Analysis of the anatomic pelvic position and comparison of the applicator positions during five insertions. *Strahlenther Onkol* 2004; **180**:216-24.
 16. Mobit P, Baird MC, Kanakamedala MR, *et al.* 3D image-based customized treatment planning versus standard plans for cervix cancer HDR brachytherapy. *Int J Radiat Oncol Biol Phys* 2010; **78**:S408.
 17. Kolkman-Deurloo IK, Nuyttens JJ, Hanssens PE, Levendag PC. Intraoperative HDR brachytherapy for rectal cancer using a flexible intraoperative template: standard plans versus individual planning. *Radiother Oncol* 2004; **70**:75-9.
 18. Callan JR, Kelly RT, Quinn ML, *et al.* Human factors evaluation of remote after loading brachytherapy. United States Nuclear Regulatory Commission, NUREG/CR-6125, Washington D C, 1995; **1**.
 19. Hellebust TP, Dale E, Skjøsberg A, Olsen DR. Inter fraction variations in rectum and bladder volumes and dose distributions during high dose rate brachytherapy treatment of the uterine cervix investigated by repetitive CT-examinations. *Radiother Oncol* 2001; **60**:273-80.
 20. Dose and volume specification for reporting intracavitary therapy in gynecology. ICRU Report No 38. 1985.
 21. Bayley AJ, Catton CN, Haycocks T, *et al.* A randomized trial of supine vs. prone positioning in patients undergoing escalated dose conformal radiotherapy for prostate cancer. *Radiother Oncol* 2004; **70**:37-44.
 22. Pergolizzi S, Settineri N, Ascenti G, *et al.* Enlarged axillary nodes and position of the arms in axillary irradiation--a computed tomography and magnetic resonance imaging evaluation. *Acta Oncol* 2004; **43**:182-5.
 23. Pergolizzi S, Settineri N, Gaeta M, *et al.* What is the best position of the arms in mantle field for Hodgkin's disease? *Int J Radiat Oncol Biol Phys* 2000; **46**:119-22.
 24. Joelsson I, Bäckström A. Dose rate measurements in bladder and rectum. Intracavitary radiation of carcinoma of the uterine cervix. *Acta Radiol Ther Phys Biol* 1969; **8**:343-59.
 25. Joelsson I, Bäckström A. Applicators for remote afterloading technique for optimum pelvic dose distribution in carcinoma of the uterine cervix. *Acta Radiol Ther Phys Biol* 1970; **9**:233-46.
 26. Yun HG, Shin KC. Study of patient's position to reduce late complications in high dose rate intracavitary radiation of the uterine cervix cancer. *J Korean Soc Ther Radiol Oncol* 1998; **16**: 477-84.
 27. Talluri AK, Alluri KR, Gudipudi DK, *et al.* Study of positional dependence of dose to bladder, pelvic wall and rectal points in High-Dose-Rate Brachytherapy in cervical cancer patients. *J Med Phys* 2013; **38**:178-84.
 28. Meng J, Yewondwossen M. Rationality and evidence of pre-prepared treatment plan in Oesophageal HDR brachytherapy. *Int J Med Health Pharmaceutical and Biomed Eng* 2013; **7**: 464-6.
 29. Bahena JH, Martinez A, Yan D, *et al.* Spatial reproducibility of the ring and tandem high-dose rate cervix applicator. *Int J Radiat Oncol Biol Phys* 1998; **41**:13-9.
 30. Ebruli C, Demiral AN, Cetingöz R, *et al.* The variability of applicator position among high dose rate intracavitary brachytherapy applications in cervical cancer patients treated with ring & tandem applicators. *Tumori* 2007; **93**:432-8.
 31. Elhanafy OA, Das RK, Paliwal BR, *et al.* Anatomic variation of prescription points and treatment volume with fractionated high-dose rate gynecological brachytherapy. *J Appl Clin Med Phys* 2002; **3**:1-5.
 32. Hoskin PJ, Bownes P, Summers A. The influence of applicator angle on dosimetry in vaginal vault brachytherapy. *Br J Radiol* 2002; **75**:234-7.
 33. Iati G, Pontoriero A, Mondello S, *et al.* Three-dimensional treatment planning for vaginal cuff brachytherapy: dosimetric effects on organs at risk according to patients position. *Brachytherapy* 2014; **13**:568-71.